



Universiteit
Leiden
The Netherlands

Random walk in cooling random environment: ergodic limits and concentration inequalities

Avena, L.; Chino, Y.; Costa, C. de; Hollander, W.T.F. den

Citation

Avena, L., Chino, Y., Costa, C. de, & Hollander, W. T. F. den. (2019). Random walk in cooling random environment: ergodic limits and concentration inequalities. *Electronic Journal Of Probability*, 24, 38. doi:10.1214/19-EJP296

Version: Publisher's Version

License: [Creative Commons CC BY 4.0 license](https://creativecommons.org/licenses/by/4.0/)

Downloaded from: <https://hdl.handle.net/1887/78021>

Note: To cite this publication please use the final published version (if applicable).

Random walk in cooling random environment: ergodic limits and concentration inequalities

Luca Avena* Yuki Chino[†] Conrado da Costa[‡]
Frank den Hollander[§]

Abstract

In previous work by Avena and den Hollander [3], a model of a random walk in a dynamic random environment was proposed where the random environment is resampled from a given law along a given sequence of times. In the regime where the increments of the resampling times diverge, which is referred to as the *cooling regime*, a weak law of large numbers and certain fluctuation properties were derived under the annealed measure, in dimension one. In the present paper we show that a strong law of large numbers and a quenched large deviation principle hold as well. In the cooling regime, the random walk can be represented as a sum of independent variables, distributed as the increments of a random walk in a static random environment over diverging periods of time. Our proofs require suitable multi-layer decompositions of sums of random variables controlled by moment bounds and concentration estimates. Along the way we derive two results of independent interest, namely, concentration inequalities for the random walk in the static random environment and an ergodic theorem that deals with limits of sums of triangular arrays representing the structure of the cooling regime. We close by discussing our present understanding of homogenisation effects as a function of the cooling scheme, and by hinting at what can be done in higher dimensions. We argue that, while the cooling scheme does not affect the speed in the strong law of large numbers nor the rate function in the large deviation principle, it does affect the fluctuation properties.

Keywords: random walk; dynamic random environment; resampling times; law of large numbers; large deviation principle; concentration inequalities.

AMS MSC 2010: 60F05; 60F10; 60G50; 60K37.

Submitted to EJP on October 25, 2018, final version accepted on March 17, 2019.

*Leiden University, the Netherlands. E-mail: l.avena@math.leidenuniv.nl

[†]Leiden University, the Netherlands. E-mail: y.chino@math.leidenuniv.nl

[‡]Leiden University, the Netherlands. E-mail: c.freitas.paulo.da.costa@math.leidenuniv.nl

[§]Leiden University, the Netherlands. E-mail: denholla@math.leidenuniv.nl

1 Introduction, main results and discussion

Random walk in random environment is a model for a particle moving in an inhomogeneous potential. When the random environment is *static* this model exhibits striking features. Namely, there are regions where the random walk remains *trapped* for a long time. The presence of these traps leads to a slow-down of the random walk in comparison to a homogeneous random walk, and may result in anomalous scaling, especially in low dimensions. At present, these slow-down phenomena have been fully understood only in dimension one (see Zeitouni [16] for an overview, and references therein).

The situation where the random environment is *dynamic* has seen major progress in the last ten years. While the random environment evolves over time, it remains inhomogeneous but dissolves existing traps and creates new traps. Depending on the choice of the dynamics, the random walk behaviour can either be similar to that in the static model or be similar to that in the homogeneous model. Up to now, most dynamic models require strong space-time mixing conditions, guaranteeing negligible trapping effects and resulting in scaling properties similar to those of a homogeneous random walk (see Avena, Blondel and Faggionato [2] for an overview, and references therein).

In Avena and den Hollander [3], a new random walk model was introduced, called *Random Walk in Cooling Random Environment* (RWCRE). This has a dynamic random environment, but differs from other dynamic models in that it allows for an explicit control of the time mixing in the environment. Namely, at time zero an i.i.d. random environment is generated, and this is *fully resampled* along an increasing sequence of deterministic times. If the resampling times increase rapidly enough, then we expect to see a behaviour close to that of the static model. Conversely, if the resampling times increase slowly enough, then we expect to see a behaviour that is close to the homogeneous model. Thus, RWCRE allows for different scenarios as a function of the speed of growth of the resampling times. The name “cooling” is used because the static model is sometimes called “frozen”.

In order to advance our understanding of RWCRE, we need to acquire detailed knowledge of fluctuations and large deviations for the classical one-dimensional Random Walk in Random Environment (RWRE). *Part of this knowledge is available from the literature, but part is not and needs to be developed along the way.* A few preliminary results were proved in Avena and den Hollander [3] under the *annealed* law. In the simplest scenario where the increments of the resampling times stay bounded, which is referred to as the *no-cooling regime*, full homogenisation takes place, and both a classical Strong Law of Large Numbers (SLLN) and a classical Central Limit Theorem (CLT) hold. Moreover, it was shown that as soon as the increments of the resampling times diverge, which is referred to as the *cooling regime*, a Weak Law of Large Numbers (WLLN) holds with an asymptotic speed that is the *same* as for the corresponding RWRE [3, Theorem 1.5]. As far as fluctuations are concerned, for the case where the RWRE is in the so-called Sinai regime (recurrent, subdiffusive, non-standard limit law; see Sinai [14], Kesten [10]), it was shown that RWCRE exhibits Gaussian fluctuations with a scaling that *depends* on the speed of divergence of the increments of the resampling times [3, Theorem 1.6]. The proof of this fact requires that the convergence to the limit law for the corresponding RWRE is in L^p for some $p > 2$. In [3, Appendix C] it was shown that the convergence is in L^p for all $p > 0$.

In the present paper we pursue a more refined investigation of RWCRE. We focus on the cooling regime and aim for a deeper understanding of homogenisation effects. In particular, we derive a SLLN and a *quenched* Large Deviation Principle (LDP), with a speed and a rate function that are the *same* as for the corresponding RWRE, *no matter* how slow or how fast the cooling scheme (Theorems 1.10 and 1.11 below). Both results

are not unexpected, but at the same time are far from obvious. As we will see, they lead to some subtle surprises, which we discuss below. A crucial ingredient in both proofs is a general limit property we call *cooling ergodic theorem*, which is needed to control certain variables representing the structure of the cooling regime (Theorem 1.12 below). This theorem not only is a key tool in our proofs, it will also be useful to address other questions not investigated here. To prove the SLLN and the LDP we also need certain *concentration inequalities* for the corresponding RWRE (Theorem 1.13 below).

Outline. In Section 1.1 we define one-dimensional RWRE and recall some basic facts that are used throughout the paper. In Section 1.2 we define RWCRE. In Section 1.3 we state our four main theorems and provide some insight into their proofs. In Section 1.4 we discuss what is known about RWCRE, explain how the results derived so far relate to each other, and state a number of open problems. The remainder of the paper is devoted to the proofs: Section 2 for the cooling ergodic theorem mentioned above, Section 3 for the concentration inequalities of RWRE, and Section 4 for the SLLN and the LDP of RWCRE.

1.1 RWRE: some basic facts

Throughout the paper we use the notation $\mathbb{N}_0 = \mathbb{N} \cup \{0\}$ with $\mathbb{N} = \{1, 2, \dots\}$. The classical one-dimensional static model is defined as follows. Let $\omega = \{\omega(x) : x \in \mathbb{Z}\}$ be an i.i.d. sequence with probability distribution

$$\mu = \alpha^{\mathbb{Z}} \quad (1.1)$$

for some probability distribution α on $(0, 1)$. We write $\langle \cdot \rangle$ to denote the expectation w.r.t. α .

Definition 1.1 (RWRE). Let ω be an environment sampled from μ . We call *Random Walk in Random Environment* the Markov chain $Z = (Z_n)_{n \in \mathbb{N}_0}$ with state space \mathbb{Z} and transition probabilities

$$P^\omega(Z_{n+1} = x + e \mid Z_n = x) = \begin{cases} \omega(x) & \text{if } e = 1, \\ 1 - \omega(x) & \text{if } e = -1, \end{cases} \quad x \in \mathbb{Z}, n \in \mathbb{N}_0. \quad (1.2)$$

We denote by $P_x^\omega(\cdot)$ the *quenched* law of the Markov chain identified by the transitions in (1.2) starting from $x \in \mathbb{Z}$, and by

$$P_x^\mu(\cdot) = \int_{(0,1)^{\mathbb{Z}}} P_x^\omega(\cdot) \mu(d\omega), \quad (1.3)$$

the corresponding *annealed* law.

The understanding of one-dimensional RWRE is well developed, both under the quenched and the annealed law. For a general overview, we refer the reader to the lecture notes by Zeitouni [16]. Here we collect some basic facts and definitions that will be needed throughout the paper.

The asymptotic properties of RWRE are controlled by the distribution of the ratio of the transition probabilities to the left and to the right at the origin, i.e.,

$$\rho = \frac{1 - \omega(0)}{\omega(0)}. \quad (1.4)$$

We will impose a *uniform ellipticity* condition on μ , namely,

$$\exists c \in (0, 1): \quad \text{supp}(\alpha) \subset [c, 1 - c]. \quad (1.5)$$

Definition 1.2 (Basic environment distribution). We call a probability distribution μ on $(0, 1)^{\mathbb{Z}}$ α -basic if (1.1) and (1.5) hold.

The following proposition due to Solomon [15] characterises recurrence versus transience and asymptotic speed. To state the result in a simple form we may assume without loss of generality that

$$\langle \log \rho \rangle \leq 0. \tag{1.6}$$

The case where $\langle \log \rho \rangle > 0$ follows by a reflection argument. Indeed, define $\tilde{\omega}$ by $\tilde{\omega}(x) = 1 - \omega(-x)$, $x \in \mathbb{Z}$. From (1.2) we see that $P_0^\omega(-Z_n \in \cdot) = P_0^{\tilde{\omega}}(Z_n \in \cdot)$. Therefore, statements for the left of the origin can be obtained from statements for the right of the origin in the reflected environment and so (1.6) is assumed for convenience.

Proposition 1.3 (Recurrence, transience and speed of RWRE [15]).

Suppose that μ is α -basic and that (1.6) holds. Then:

- Z is recurrent when $\langle \log \rho \rangle = 0$.
- Z is transient to the right when $\langle \log \rho \rangle < 0$.
- For μ -a.e. ω , P_0^ω - a.s.,

$$\lim_{n \rightarrow \infty} \frac{Z_n}{n} = v_\mu = \begin{cases} 0, & \text{if } \langle \rho \rangle \geq 1, \\ \frac{1 - \langle \rho \rangle}{1 + \langle \rho \rangle} > 0, & \text{if } \langle \rho \rangle < 1. \end{cases} \tag{1.7}$$

The above proposition shows that the speed of RWRE is a deterministic function of μ (or of α ; recall (1.1)). Note that for α such that $\langle \log \rho \rangle < 0$ and $\langle \rho \rangle \geq 1$, the random walk is transient to the right with zero speed. In this regime Z diverges, but only sublinearly due to the presence of traps, i.e., local regions of the environment pushing the random walk against its global drift.

Similar trapping effects give rise to other anomalous behaviour for fluctuations and large deviations. In order to state the latter, we recall that a family of probability measures $(P_n)_{n \in \mathbb{N}}$ defined on the Borel sigma-algebra of a topological space $(\mathcal{S}, \mathcal{T})$ is said to satisfy the LDP with rate n and with rate function $I: \mathcal{S} \rightarrow [0, \infty]$ when

$$\begin{aligned} \liminf_{n \rightarrow \infty} \frac{1}{n} \log P_n(\mathcal{O}) &\geq - \inf_{x \in \mathcal{O}} I(x) && \forall \mathcal{O} \subset \mathcal{S} \text{ open,} \\ \limsup_{n \rightarrow \infty} \frac{1}{n} \log P_n(\mathcal{C}) &\leq - \inf_{x \in \mathcal{C}} I(x) && \forall \mathcal{C} \subset \mathcal{S} \text{ closed,} \end{aligned} \tag{1.8}$$

I has compact level sets and $I \not\equiv \infty$ (see e.g. den Hollander [9, Chapter III]). The following proposition due to Greven and den Hollander [8] identifies the LDP for the empirical speed under the quenched law.

Proposition 1.4 (Quenched LDP for RWRE displacements [8]).

Suppose that μ is α -basic. Then, for μ -a.e. ω , $(Z_n/n)_{n \in \mathbb{N}}$ under P_0^ω satisfies the LDP on \mathbb{R} with rate n and with a convex and deterministic rate function $\mathcal{I} = \mathcal{I}_\mu$.

See [8] for a representation of \mathcal{I} in terms of random continued fractions and Fig. 2 for the qualitative behaviour of \mathcal{I} on different regimes.

In the sequel we will need refined results about the cumulant generating function of Z_n/n . For that we need to introduce the hitting times to the right

$$H_n = \inf \{ m \in \mathbb{N} : Z_m = n \}, \quad n \in \mathbb{N}, \tag{1.9}$$

state the weak LDP for H_n/n , which was derived in Comets, Gantert and Zeitouni [6], and show its relation with the LDP for Z_n/n . See also den Hollander [9, Chapter VII]. We recall that for the weak LDP the second line in (1.8) is only required to hold for compact sets, and the rate function is only required to be lower semi-continuous.

Proposition 1.5 (Quenched LDP for RWRE hitting times [6]).

Suppose that μ is α -basic. Then, for μ -a.e. ω , $(H_n/n)_{n \in \mathbb{N}}$ under P_0^ω satisfies the weak LDP on \mathbb{R} with rate n and with a convex and deterministic weak rate function $\mathcal{J} = \mathcal{J}_\mu$ given by (see Fig. 1)

$$\mathcal{J}(x) = \sup_{\lambda \in \mathbb{R}} [\lambda x - \mathcal{J}^*(\lambda)], \quad x \in \mathbb{R}, \tag{1.10}$$

where

$$\mathcal{J}^*(\lambda) = \lim_{n \rightarrow \infty} \frac{1}{n} \log E_0^\omega [e^{\lambda H_n}] = \int_{(0,1)^{\mathbb{Z}}} \mu(d\omega) \log E_0^\omega [e^{\lambda H_1}] \quad \omega - \text{a.s.}, \lambda \in \mathbb{R}. \tag{1.11}$$

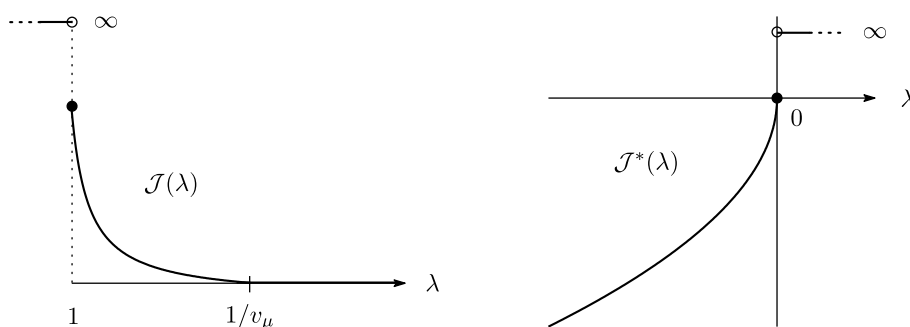


Figure 1: *Left:* Graph of \mathcal{J} , the quenched rate function of RWRE hitting times in (1.10). *Right:* Graph of \mathcal{J}^* , the scaled cumulant generating function of RWRE hitting times in (1.11).

For the hitting times to the left, defined by (1.9) with $n \in -\mathbb{N}$, we have the weak rate function $\tilde{\mathcal{J}} = \tilde{\mathcal{J}}_\mu$:

$$\tilde{\mathcal{J}}(x) = \mathcal{J}(x) - \langle \log \rho \rangle, \quad x \in \mathbb{R}. \tag{1.12}$$

Moreover, the following relation between \mathcal{J} and \mathcal{I} holds (see [9, Chapter VII]):

$$\mathcal{I}(x) = \begin{cases} x\mathcal{J}(1/x), & x \in (0, 1], \\ 0, & x = 0, \\ (-x)\tilde{\mathcal{J}}(1/(-x)), & x \in [-1, 0). \end{cases} \tag{1.13}$$

The empirical speed of RWRE also satisfies the LDP under the annealed law.

Proposition 1.6 (Annealed LDP for RWRE displacements [6]).

Suppose that μ is α -basic. Then $(Z_n/n)_{n \in \mathbb{N}}$ under P_0^μ satisfies the LDP on \mathbb{R} with rate n and with a convex rate function $\mathcal{I}^{\text{ann}} = \mathcal{I}_\mu^{\text{ann}}$.

As shown in [6], the annealed and the quenched rate function are related through the following variational principle

$$\mathcal{I}^{\text{ann}}(\theta) = \mathcal{I}_\mu^{\text{ann}}(\theta) = \inf_{\nu} [\mathcal{I}_\nu(\theta) + |\theta| h(\nu | \mu)], \tag{1.14}$$

where \mathcal{I}_ν is the quenched rate function associated with a random environment that has law ν , $h(\nu | \mu)$ denotes the relative entropy of ν with respect to μ , and the infimum runs over the set of probability measures on $(0, 1)^{\mathbb{Z}}$ endowed with the weak topology (see [6] for more details). In particular, \mathcal{I}^{ann} is qualitatively similar to \mathcal{I} in Fig. 2, in the sense that \mathcal{I}^{ann} is strictly decreasing on $[-1, 0]$, zero on $[0, v_\mu]$, and strictly increasing on $[v_\mu, 1]$.

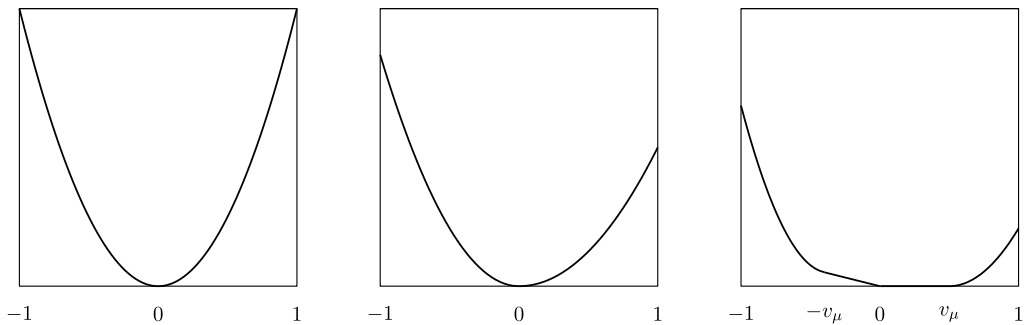


Figure 2: Graph of \mathcal{I} , the quenched rate function of RWRE displacements in (1.13). Three cases are shown from left to right: recurrent, transient with zero speed, transient with positive speed.

The presence of the flat piece $[0, v_\mu]$ in the positive speed case makes our analysis more delicate, and we will need the following large deviation bound characterising the right decay when zooming in on the flat piece:

Proposition 1.7 (Annealed LDP bound away from v_μ [7]).

Suppose that μ is α -basic. Then, for any closed set \mathcal{C} such that $v_\mu \notin \mathcal{C}$,

$$\limsup_{n \rightarrow \infty} \frac{1}{\log n} \log P_0^\mu \left(\frac{Z_n}{n} \in \mathcal{C} \right) < 0. \tag{1.15}$$

1.2 RWCRE: refreshing times

The cooling random environment is the *space-time* random environment built by partitioning \mathbb{N}_0 , and assigning independently to each piece an environment sampled from μ in (1.1) (see Fig. 3). Formally, let $\tau: \mathbb{N}_0 \rightarrow \mathbb{R}_+$ be a strictly increasing function with $\tau(0) = 0$, referred to as the *cooling map*. The cooling map determines a sequence of *refreshing times* $(\tau(k))_{k \in \mathbb{N}_0}$ that we use to construct the dynamic random environment.

Definition 1.8 (Cooling Random Environment). Given a cooling map τ , let $\Omega = (\omega_k)_{k \in \mathbb{N}}$ be an i.i.d. sequence of random variables with law μ in (1.1). The *cooling random environment* is built from the pair (Ω, τ) by assigning the environment ω_k to the k -th interval I_k defined by

$$I_k = [\tau(k-1), \tau(k)), \quad k \in \mathbb{N}. \tag{1.16}$$

In the present paper we consider the *cooling regime*, i.e., we consider τ such that the length of I_k in (1.16) diverges:

$$T_k = \tau(k) - \tau(k-1), \quad \lim_{k \rightarrow \infty} T_k = \infty. \tag{1.17}$$

The role of this assumption is clarified in Section 1.4.

Definition 1.9 (RWCRE). Let τ be a cooling map and Ω an environment sequence sampled from $\mu^{\mathbb{N}}$. We call *Random Walk in Cooling Random Environment* the Markov chain $X = (X_n)_{n \in \mathbb{N}_0}$ with state space \mathbb{Z} and transition probabilities

$$P^{\Omega, \tau}(X_{n+1} = x + e \mid X_n = x) = \begin{cases} \omega_{\ell(n)}(x), & e = 1, \\ 1 - \omega_{\ell(n)}(x), & e = -1, \end{cases} \quad x \in \mathbb{Z}, n \in \mathbb{N}_0, \tag{1.18}$$

where

$$\ell(n) = \inf\{k \in \mathbb{N}_0 : \tau(k) > n\} \tag{1.19}$$

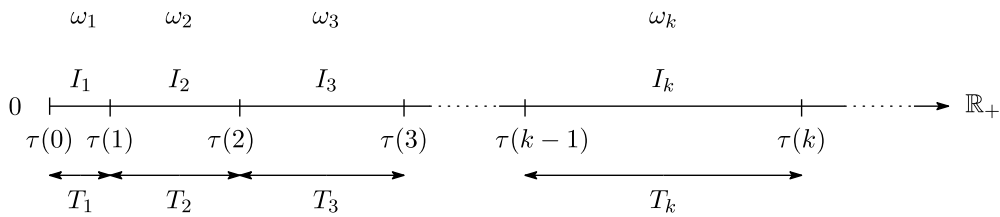


Figure 3: Structure of the cooling random environment (Ω, τ) .

is the index of the interval n belongs to. Similarly to Definition 1.1, we denote by

$$P_x^{\Omega, \tau}(\cdot) \quad \text{and} \quad P_x^{\mu, \tau}(\cdot) = \int_{[(0,1)^{\mathbb{Z}}]^{\mathbb{N}}} P_x^{\Omega, \tau}(\cdot) \mu^{\mathbb{N}}(d\Omega), \tag{1.20}$$

the corresponding *quenched* and *annealed* laws, respectively.

In words, RWCRE moves according to a given environment sampled from μ , until the next refreshing time $\tau(k)$, when a new environment is sampled from μ . Equivalently, the random walk trajectory is independent across the intervals, and during each interval I_k moves like a RWRE in the environment ω_k . In view of assumption (1.17), the environment is resampled along a diverging sequence of time increments. Our goal is to understand in what way this makes RWCRE behave similarly as RWRE (see Section 1.4 below).

The position X_n of RWCRE admits the following key decomposition into pieces of RWRE. Define the *refreshed increments* and the *boundary increment* as

$$Y_k = X_{\tau(k)} - X_{\tau(k-1)}, \quad k \in \mathbb{N}, \quad \bar{Y}^n = X_n - X_{\tau(\ell(n)-1)}, \tag{1.21}$$

and the *running time at the boundary* as

$$\bar{T}^n = n - \tau(\ell(n) - 1). \tag{1.22}$$

Note that, by (1.17),

$$\sum_{k=1}^{\ell(n)-1} T_k + \bar{T}^n = n. \tag{1.23}$$

By construction, we can write X_n as the sum

$$X_n = \sum_{k=1}^{\ell(n)-1} Y_k + \bar{Y}^n, \quad n \in \mathbb{N}_0. \tag{1.24}$$

This decomposition shows that, in order to analyse X , we must analyse the vector

$$(Y_1, \dots, Y_{\ell(n)-1}, \bar{Y}^n) \tag{1.25}$$

consisting of independent components, each distributed as an increment of Z (defined in Section 1.1) over a given time length determined by τ and n . Fig. 4 illustrates this piece-wise decomposition of X_n . More precisely, for any measurable function $f: \mathbb{Z} \rightarrow \mathbb{R}$, any Ω sampled from $\mu^{\mathbb{N}}$ and any τ ,

$$E_0^{\Omega, \tau} [f(Y_k)] = E_0^{\omega_k} [f(Z_{T_k})], \quad E_0^{\Omega, \tau} [f(\bar{Y}^n)] = E_0^{\omega_{\ell(n)}} [f(Z_{\bar{T}^n})]. \tag{1.26}$$

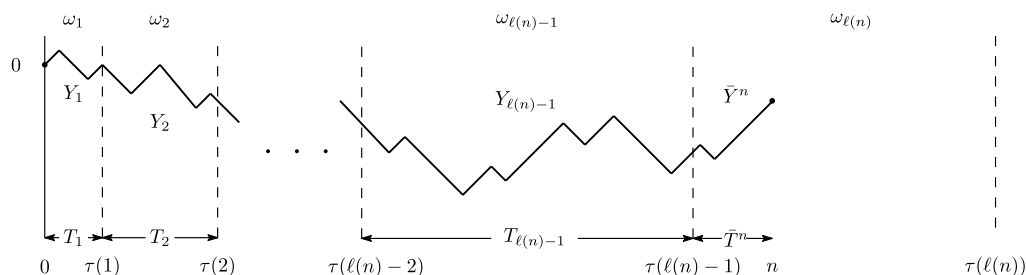


Figure 4: The decomposition of RWCRE in pieces of RWRE as presented in (1.24).

1.3 Main results

We can now state our main results for the asymptotic behaviour of RWCRE.

Theorem 1.10 (SLLN for RWCRE displacements).

Suppose that μ is α -basic and that τ satisfies (1.17). Then, for $\mu^{\mathbb{N}}$ -a.e. Ω ,

$$\lim_{n \rightarrow \infty} \frac{X_n}{n} = v_\mu \quad P_0^{\Omega, \tau} \text{ - a.s.} \tag{1.27}$$

with v_μ as in (1.7).

Theorem 1.11 (Quenched LDP for RWCRE displacements).

Suppose that μ is α -basic and that τ satisfies (1.17). Then, for $\mu^{\mathbb{N}}$ -a.e. Ω , $(X_n/n)_{n \in \mathbb{N}}$ under $P_0^{\Omega, \tau}$ satisfies the LDP on \mathbb{R} with rate n and with the same rate function $\mathcal{I} = \mathcal{I}_\mu$ as in Proposition 1.4.

Both theorems will be discussed in Section 1.4 and will be proved in Section 4. Their derivation will be based on the following general convergence statement tailored to RWCRE.

Theorem 1.12 (Cooling Ergodic Theorem).

Let $(\psi_n^{(k)})_{n, k \in \mathbb{N}}$ be an array of real-valued random variables with law \mathbb{P} . Assume that:

(A1) For all $k, k' \in \mathbb{N}$ with $k \neq k'$, $(\psi_n^{(k)})_{n \in \mathbb{N}}$ and $(\psi_n^{(k')})_{n \in \mathbb{N}}$ are independent.

(A2) There exists a $C \in (0, \infty)$ such that

$$\sup_{k, n \in \mathbb{N}} |n^{-1} \psi_n^{(k)}| < C \quad \mathbb{P} \text{ - a.s.} \tag{1.28}$$

(A3) There exist $L \in \mathbb{R}$ and $\delta > 1$ such that for all $\varepsilon > 0$ there exists a $C' = C'(\varepsilon) \in (0, \infty)$ such that

$$\sup_{k \in \mathbb{N}} \mathbb{P} \left(\left| \frac{\psi_n^{(k)}}{n} - L \right| > \varepsilon \right) < \frac{C'}{n^\delta}, \quad \forall n \in \mathbb{N}. \tag{1.29}$$

Then, for any cooling map τ satisfying (1.17),

$$\lim_{n \rightarrow \infty} \frac{1}{n} \left(\sum_{k=1}^{\ell(n)-1} \psi_{T_k}^{(k)} + \psi_{\bar{T}^n}^{(\ell(n))} \right) = L \quad \mathbb{P} \text{ - a.s.} \tag{1.30}$$

with $\ell(n)$ as in (1.19), T_k as in (1.17), and \bar{T}^n as in (1.22). Furthermore, (1.30) remains valid if (1.29) holds with $\delta \in (0, 1]$ and, in addition to (A1) and (A2), there exists a $C \in (0, \infty)$ such that

$$\sup_{k, n \in \mathbb{N}} |\psi_{n+1}^{(k)} - \psi_n^{(k)}| \leq C \quad \mathbb{P} \text{ - a.s.} \tag{1.31}$$

Theorem 1.12 is useful for controlling limits of sums of the form appearing in (1.30). Its proof is presented in Section 2 and is based on moments bounds and concentration estimates, applied to a further decomposition into what we call *refreshed*, *boundary* and *deterministic* terms, respectively. Theorem 1.12 is a key ingredient in our paper.

To check (1.29) is a challenge. In itself, (1.29) is only a mild decay requirement, but it forces us to derive concentration inequalities for RWRE, which is a non-trivial task. For the SLLN in Theorem 1.10, the required concentration inequalities are already at our disposal, since they are encoded in the annealed large deviation bound recalled in Proposition 1.7. However, for Theorem 1.11 concentration results for RWRE are needed which, to the best of our knowledge, are not available in the literature. Therefore we state in the following theorem such results, which are of independent interest.

Since the nearest-neighbour walk is not aperiodic, for parity reasons and notational ease we denote by $[nx]$ the lower integer part of x , and by $[[nx]]$ either $[nx]$ or $[nx] + 1$ depending on the parity of n , so that $[[nx]]$ is even/odd when n is even/odd.

Theorem 1.13 (Concentration for RWRE).

Suppose that μ is α -basic. Then, for any $\lambda \in \mathbb{R}$, $\delta \in (0, 1)$ and $\varepsilon > 0$ there are $C, c \in (0, \infty)$ (depending on $\mu, \lambda, \delta, \varepsilon$) such that

$$\mu \left(\omega : \left| \frac{1}{n} \log E_0^\omega [e^{\lambda H_n}] - \mathcal{J}^*(\lambda) \right| > \varepsilon \right) \leq C e^{-cn^{1-\delta}}, \quad \forall n \in \mathbb{N}, \quad (1.32)$$

where \mathcal{J}^* is the Legendre transform of the rate function \mathcal{J} in Proposition 1.5,

$$\mu \left(\omega : \left| \frac{1}{n} \log E_0^\omega [e^{\lambda Z_n}] - \mathcal{I}^*(\lambda) \right| > \varepsilon \right) \leq C e^{-cn^{1-\delta}}, \quad \forall n \in \mathbb{N}, \quad (1.33)$$

with \mathcal{I}^* the Legendre transform of the rate function \mathcal{I} in Proposition 1.4, and

$$\mu \left(\omega : \sup_{x \in [-1, 1]} \left| \frac{1}{n} \log P_0^\omega (Z_n = [[nx]]) + \mathcal{I}(x) \right| > \varepsilon \right) \leq C e^{-cn^{1-\delta}}, \quad \forall n \in \mathbb{N}. \quad (1.34)$$

Note that if $\lambda > 0$, then both $E_0^\omega [e^{\lambda H_n}]$ and $\mathcal{J}^*(\lambda)$ are infinite. The proof of Theorem 1.13 is given in Section 3.

1.4 Discussion

No-cooling: bounded time increments. The regime where assumption (1.17) does not hold and the increments T_k in (1.17) are of order one has been investigated in [3]. Due to the fast resampling, no trapping effects enter the game and full homogenisation takes place. In fact, the decomposition in (1.24) gives us a sum of almost i.i.d. random variables and the resulting behaviour is as if X were a homogeneous Markov chain: [3, Theorem 1.4] shows a corresponding classical SLLN and classical CLT under the annealed law.

Weak and strong law of large numbers. Theorem 1.10 states that, as soon as the cooling is effective, i.e., assumption (1.17) is in force, the asymptotic speed exists a.s., is deterministic and is equal to the one for RWRE. The same statement has been derived in weak form in [3, Theorem 1.5]. The strong form presented here requires a much more involved proof, based on RWRE concentration inequalities. In fact, Theorem 1.10 is far from trivial because the cooling map allows for fluctuations that could in principle hamper the almost sure convergence. As the proof reveals, the fact that this is not the case comes from a non-trivial averaging due to the cooling resampling mechanism. Roughly speaking, the slower the cooling, the stronger are the fluctuations of the constituent pieces in the sum in (1.24), but these fluctuations average out, as will be shown with the help of the moments bounds and the concentration estimates mentioned earlier.

Large deviations and fluctuations. As soon as the increments between the resampling times diverge, the rate function in the LDP for RWCRE in Theorem 1.11 is the same as for RWRE. In words, the cost to deviate from the typical speed is determined by the trapping in a fixed environment and the resampling has *no further homogenising effect*. This is true when we look on an exponential scale, but we may expect RWRE and RWCRE to show different large deviation behaviour when we zoom in on the flat piece $[0, v_\mu]$ when $v_\mu > 0$ (see Fig. 2). Theorem 1.11 deserves further comments because, when we look at fluctuations, RWRE and RWCRE actually give rise to *different scaling limits*. This has been proved for recurrent RWRE, which exhibits non-standard fluctuations after scaling by $\log^2 n$. Indeed, [3, Theorem 1.6] shows that, for certain τ 's under the annealed law, RWCRE exhibits Gaussian fluctuations after scaling by a factor that *grows faster than* $\log^2 n$ and *depends on the cooling map* τ . Similar scenarios, and even the presence of a crossover, have been conjectured to hold for RWCRE in other regimes (see Table 1). This may all sound paradoxical, because it is folklore to expect that the zeros of the rate function in an LDP encode information on the order of the fluctuations. However, the latter is only true when the rate function is smooth near its zeros. This is *not* the case for the rate functions in Fig. 2, and so the paradox is explained.

Relaxing the i.i.d. assumption on μ . It is worth mentioning that the i.i.d. assumption on μ made in (1.1) can in principle be relaxed to the assumption that μ is stationary and ergodic with respect to translations. The reader is invited to check that all the steps in the proofs below work in this more general setting. On the other hand, we will make use of certain known properties of RWRE some of which require further technical assumptions to guarantee local product structure (see e.g. [16, Theorem 2.4.3, p. 236] for the extension of Proposition 1.7).

Higher dimensions. RWRE in higher dimensions is much more involved. For instance, the SLLN has been proved only under certain *ballistic conditions*. It can be shown that, for RWCRE in the cooling regime, the SLLN in Theorem 1.10 carries over to higher dimensions under precisely the same ballistic conditions, as a consequence of the Cooling Ergodic Theorem in Theorem 1.12. The LDP in Theorem 1.11 does not automatically carry over because it is based on Theorem 1.13 and an inversion argument, in which we pass from hitting times to RW displacements. This argument exploits the one-dimensional setup, but might in principle be extended to higher dimensions.

Comparison and open problems. We conclude by summarising our present understanding of RWCRE based on the results derived here and in [3]. Let us stress again that the RWCRE model can be seen as a model that interpolates between the classical static model (i.e., $\tau(1) = \infty$) and the model with i.i.d. resamplings every unit of time (i.e., $\tau(n) = n$). The latter reduces to a homogeneous nearest-neighbour random walk under the annealed measure, but even under the quenched law the independent space-time structure leads to a strong homogenising scenario for which e.g. a classical CLT holds (see e.g. Boldrighini, Minlos and Pellegrinotti [4]). The interesting features therefore appear as we explore different cooling regimes, which allow for a competition between the effect of traps in the static environment and the effect of homogenisation coming from the resampling. Table 1 gives a qualitative comparison for RWRE, RWCRE and standard homogeneous nearest-neighbour random walk, abbreviated as RW. In view of the discussion above, the no-cooling regime $\tau(n) \sim n$ is in the same “universality class” as homogeneous random walk, which is why it is put in the same column as RW.

Model	RW \simeq No-Cooling	RWCRE	RWRE
Medium	Homogeneous	Cooling	Static
Recurrence	local drift = 0	global, depending on (τ, μ)?	$\langle \log \rho \rangle = 0$, global
Speed	local drift	v_μ (non-local)	v_μ (non-local)
LDP rate n	Cramér-analytic rate fn	non-analytic rate fn \mathcal{I}	non-analytic rate fn \mathcal{I}
Fluctuations $\langle \log \rho \rangle = 0$	CLT	$\log \log \tau(n) = o(n)$: Gaussian else: Sinai-Kesten?	Sinai-Kesten scale: $\log^2 n$
Fluctuations $\langle \log \rho \rangle < 0$???	Kesten-Kozlov-Spitzer $s < 2$ stable law $s > 2$ CLT

Table 1: Comparison among standard RW, RWCRE and RWRE. Marked in boldface are what we consider challenging open problems.

Let us comments on the most relevant items in Table 1.

- *Recurrence vs Transience:* While for a homogeneous RW we know that it is recurrent if and only if the corresponding *local* drift is zero, for RWRE the recurrence criterion is encoded in the condition $\langle \log \rho \rangle = 0$ (recall Proposition 1.3). In particular, it can happen that the local drift is non-zero, but still the above condition holds and the random walk is recurrent. In fact, a random walk in a non-homogeneous environment builds up non-negligible correlations over time, and its long-time behaviour is a truly *global* feature. For RWCRE we expect some subtle surprises related to the fluctuations of the corresponding RWRE. In particular, we expect a non-local criterion as for RWRE, controlled by a delicate interplay between the environment law μ and the cooling map τ . We will address this problem in future work.
- *Asymptotic Speed:* As for the recurrence criterion, the asymptotic speed of a homogeneous RW is given by its local drift, while for RWRE it is influenced by the presence of the traps. Theorem 1.10 shows that for *any* cooling map subject to (1.17) RWCRE has the *same* speed as RWRE. The proof is somewhat delicate and the result itself is surprising, because it means that the speed emerges as a *non-local* feature (as in the static case), *regardless of how fast the resampling increments diverge*. In contrast, in the same setup the fluctuations *do* depend on the cooling map. Furthermore, it is worth noting that more general cooling maps than the ones captured in (1.16)–(1.17) can be considered, e.g. with $\liminf_{k \rightarrow \infty} T_k < \infty = \limsup_{k \rightarrow \infty} T_k$. In such generality the resulting speed is rather more delicate to analyse (as well as other observables), and can be different from the static speed although still being non-local. For this reason, in this paper we only consider the regularity assumptions in (1.16)–(1.17).
- *Large Deviations:* Concerning large deviations of order n , for homogeneous RW displacements Cramér’s theorem tells us that their probabilities decay exponentially fast and are determined by a smooth rate function (see e.g. [9, Chapter I]). On the other hand, as we saw in Section 1.1, large deviations for RWRE are drastically different, both under the quenched and the annealed measure. In particular, both rate functions are non-analytic when $\langle \log \rho \rangle \neq 0$, and contain an interval of zeros when $v_\mu > 0$. As previously discussed, Theorem 1.11 says that under the quenched law RWCRE satisfies the LDP at rate n with the *same* rate function. Still, we expect differences between quenched large deviations for RWRE and RWCRE when zooming in on the flat piece, i.e., when considering moderate deviations that decay at a rate slower than n . This constitutes yet another interesting open problem. Let us further note that we have not looked at the annealed LDP for RWCRE. We

expect no surprises, namely, we believe that the annealed rate function for RWCRE is the same as the one for RWRE in Proposition 1.6. In fact, the proof presented in Section 4.2 could be easily adapted (and even significantly simplified) if we had existence and convexity in the annealed setting. In the quenched setting, existence and convexity will be derived by means of the cooling ergodic theorem and standard LDP arguments.

- *Fluctuations:* We conclude with what we consider to be the most challenging open problem, namely, to characterise the fluctuations for RWCRE, both under the quenched and the annealed measure. Some noteworthy results in this direction were derived in [3], where an annealed CLT for the no-cooling regime was shown [3, Theorem 1.4] and, for $\langle \log \rho \rangle = 0$ and τ growing either polynomially or exponentially, the annealed centered RWCRE displacement was shown to converge to a Gaussian law after an appropriate scaling that depends on τ [3, Theorem 1.6]. We expect that for sufficiently fast cooling a delicate crossover occurs when $\langle \log \rho \rangle = 0$, namely, we expect to see the Kesten [10] limit law as in the static case, at least along certain subsequences. What happens when $\langle \log \rho \rangle \neq 0$ seems to be even more intricate and remains unexplored. In this case for RWRE, Kesten, Kozlov and Spitzer [11] proved that annealed fluctuations can be Gaussian or can be characterised by proper stable law distributions. *We expect a rich pallet of behaviour depending on the interplay between τ and the static limit law.* The quenched fluctuations seem even more difficult to analyse in view of the corresponding more delicate results for RWRE (see Zeitouni [16], Ahn and Peterson [1]). As mentioned above, the fact that the fluctuations are affected by the cooling map while the rate function in the LDP is not, is possible because the rate function is *non-analytic* in the neighbourhood of the speed.

2 Cooling ergodic theorem

In this section we prove Theorem 1.12.

We represent the sum in (1.30) as the convex combination

$$\frac{1}{n} \left(\sum_{k=1}^{\ell(n)-1} \psi_{T_k}^{(k)} + \psi_{\bar{T}^n}^{(\ell(n))} \right) = \sum_{k=1}^{\ell(n)-1} \frac{T_k}{n} \frac{\psi_{T_k}^{(k)}}{T_k} + \frac{\bar{T}^n}{n} \frac{\psi_{\bar{T}^n}^{(\ell(n))}}{\bar{T}^n}, \tag{2.1}$$

and use the abbreviations

$$\gamma_{k,n} = \frac{T_k}{n} \mathbb{1}_{\{k \leq \ell(n)-1\}}, \quad \bar{\gamma}^n = \frac{\bar{T}^n}{n}. \tag{2.2}$$

To prove (1.30), we subtract L from (2.1) and center each term in (2.1):

$$\begin{aligned} & \sum_{k \in \mathbb{N}} \gamma_{k,n} \frac{\psi_{T_k}^{(k)}}{T_k} + \bar{\gamma}^n \frac{\psi_{\bar{T}^n}^{(\ell(n))}}{\bar{T}^n} - L \\ &= \underbrace{\sum_{k \in \mathbb{N}} \gamma_{k,n} \mathcal{C}_k}_{R_n} + \underbrace{\bar{\gamma}^n \bar{\mathcal{C}}^n}_{B_n} + \underbrace{\sum_{k \in \mathbb{N}} \gamma_{k,n} (L_{T_k}^{(k)} - L) + \bar{\gamma}^n (\bar{L}^n - L)}_{D_n}. \end{aligned} \tag{2.3}$$

Here,

$$\mathcal{C}_k = \mathcal{C}_{T_k}^{(k)}, \quad \bar{\mathcal{C}}^n = \mathcal{C}_{\bar{T}^n}^{(\ell(n))}, \quad \bar{L}^n = L_{\bar{T}^n}^{(\ell(n))}, \tag{2.4}$$

with

$$\mathcal{C}_T^{(k)} = \frac{\psi_T^{(k)}}{T} - L_T^{(k)}, \quad L_T^{(k)} = \mathbb{E} \left[\frac{\psi_T^{(k)}}{T} \right], \quad T \in \mathbb{N}. \tag{2.5}$$

The terms R_n , B_n and D_n correspond to *refreshed*, *boundary* and *deterministic* increments, respectively. In Sections 2.1, 2.2 and 2.3 we treat each of these terms separately, and show that they are asymptotically vanishing.

2.1 Refreshed term

We next show that

$$\limsup_{n \rightarrow \infty} |R_n| = 0 \quad \mathbb{P} - \text{a.s.} \tag{2.6}$$

In view of (1.29), we split the increments of the resampling times according to a growth parameter $\gamma > 0$ such that $\gamma\delta > 1$,

$$\sum_{k \in \mathbb{N}} \gamma_{k,n} \mathcal{C}_k = \underbrace{\sum_{k \in \mathbb{N}} \gamma_{k,n} \mathcal{C}_k \mathbb{1}_{\{T_k \geq k^\gamma\}}}_{R_n^L} + \underbrace{\sum_{k \in \mathbb{N}} \gamma_{k,n} \mathcal{C}_k \mathbb{1}_{\{T_k < k^\gamma\}}}_{R_n^S}, \tag{2.7}$$

which corresponds to the sum of large and small increments, respectively. The goal is to bound both $\limsup_{n \rightarrow \infty} |R_n^L|$ and $\limsup_{n \rightarrow \infty} |R_n^S|$.

We first treat the sum of large increments R_n^L . Note that Assumption (A2) and (1.29) imply that $L_T^{(k)} \rightarrow L$ as $T \rightarrow \infty$ uniformly in $k \in \mathbb{N}$. Therefore, using the triangle inequality, (1.29) can be written as

$$\sup_{k \in \mathbb{N}} \mathbb{P} \left(\left| C_T^{(k)} \right| > \varepsilon \right) < \frac{C'}{T^\delta}. \tag{2.8}$$

Hence, if $\gamma\delta > 1$, then

$$\sum_{k \in \mathbb{N}} \mathbb{P} \left(|\mathcal{C}_k| \mathbb{1}_{\{T_k \geq k^\gamma\}} > \varepsilon \right) < \sum_{k \in \mathbb{N}} \frac{C'}{k^{\gamma\delta}} < \infty. \tag{2.9}$$

Applying the Borel-Cantelli lemma, we get

$$\limsup_{k \rightarrow \infty} \mathcal{C}_k \mathbb{1}_{\{T_k \geq k^\gamma\}} \leq \varepsilon \quad \mathbb{P} - \text{a.s.} \tag{2.10}$$

Since $\lim_{n \rightarrow \infty} \gamma_{k,n} = 0$ for fixed $k \in \mathbb{N}$ and $\sum_{k \in \mathbb{N}} \gamma_{k,n} \leq 1$, we obtain

$$\limsup_{n \rightarrow \infty} |R_n^L| \leq \varepsilon \quad \mathbb{P} - \text{a.s.} \tag{2.11}$$

To deal with the sum of small increments R_n^S , we apply the Markov inequality:

$$\mathbb{P} \left(|R_n^S| > \varepsilon \right) \leq \frac{1}{\varepsilon^{2N}} \mathbb{E} \left[\left(\sum_{k=1}^n \gamma_{k,n}^S \mathcal{C}_k \right)^{2N} \right], \quad \gamma_{k,n}^S = \gamma_{k,n} \mathbb{1}_{\{T_k < k^\gamma\}}. \tag{2.12}$$

Since the \mathcal{C}_k 's are independent, zero-mean and bounded random variables, when we expand the $2N$ -th power, all terms with first moment disappear. Therefore, we can

estimate the moments as (C is a generic constant that may change from line to line)

$$\begin{aligned}
 & \mathbb{E} \left[\left(\sum_{k=1}^n \gamma_{k,n}^S \mathcal{C}_k \right)^{2N} \right] \\
 &= \sum_{m=1}^N \sum_{\substack{\ell_1, \dots, \ell_m \in \mathbb{N} \setminus \{1\} \\ \ell_1 + \dots + \ell_m = 2N}} \binom{2N}{\ell_1 \dots \ell_m} \sum_{n \geq k_1 > \dots > k_m} \mathbb{E} \left[(\gamma_{k_1,n}^S \mathcal{C}_{k_1})^{\ell_1} \dots (\gamma_{k_m,n}^S \mathcal{C}_{k_m})^{\ell_m} \right] \\
 &\leq \sum_{m=1}^N \sum_{\substack{\ell_1, \dots, \ell_m \in \mathbb{N} \setminus \{1\} \\ \ell_1 + \dots + \ell_m = 2N}} \binom{2N}{\ell_1 \dots \ell_m} \sum_{n \geq k_1 > \dots > k_m} (Cn^{\gamma-1})^{2N} \\
 &\leq (Cn^{\gamma-1})^{2N} \sum_{m=1}^N n^m \sum_{\substack{\ell_1, \dots, \ell_m \in \mathbb{N} \setminus \{1\} \\ \ell_1 + \dots + \ell_m = 2N}} \binom{2N}{\ell_1 \dots \ell_m} \leq c_N n^{N(2\gamma-1)},
 \end{aligned} \tag{2.13}$$

where in the first inequality we use the bounds $\mathcal{C}_{k_i} \leq C$ (from Assumption (A2)) and $\gamma_{k_i,n}^S \leq \frac{k_i^\gamma}{n}$ for $i = 1, \dots, m$, in the second inequality the bound

$$\sum_{n \geq k_1 > \dots > k_m} 1 \leq n^m, \tag{2.14}$$

and in the third inequality the bound $m \leq N$ and the abbreviation

$$c_N = C^{2N} \sum_{m=1}^N \sum_{\substack{\ell_1, \dots, \ell_m \in \mathbb{N} \setminus \{1\} \\ \ell_1 + \dots + \ell_m = 2N}} \binom{2N}{\ell_1 \dots \ell_m}. \tag{2.15}$$

The right-hand side of (2.13) is summable in n as long as $\gamma < \frac{1}{2}$, because we can choose N arbitrarily large. This suggests that we need to further separate the argument.

Case $\delta > 2$: single split. If $\delta > 2$, then we can pick $\gamma < \frac{1}{2}$. From (2.12) and (2.13), we obtain

$$\sum_{n \in \mathbb{N}} \mathbb{P} (|R_n^S| > \varepsilon) < \infty. \tag{2.16}$$

Hence, by the Borel-Cantelli lemma,

$$\limsup_{n \rightarrow \infty} |R_n^S| \leq \varepsilon \quad \mathbb{P} - \text{a.s.} \tag{2.17}$$

Combining (2.7), (2.11) and (2.17), we get that for $\delta > 2$,

$$\limsup_{n \rightarrow \infty} |R_n| \leq 2\varepsilon \quad \mathbb{P} - \text{a.s.} \tag{2.18}$$

Case $\delta < 2$: multi-layer split. If $\delta < 2$, then we must pick $\gamma > \frac{1}{2}$ to satisfy $\gamma\delta > 1$. Here we can no longer use the previous argument to obtain (2.16). To overcome this difficulty, we implement a multi-layer scheme distinguishing small and large increments according to a growth parameter. Take $M \in \mathbb{N}$ such that $\frac{M}{3}\delta > 1$. Similarly to (2.7), define the first split:

$$R_n = \sum_{k \in \mathbb{N}} \gamma_{k,n} \mathcal{C}_k = \underbrace{\sum_{k \in \mathbb{N}} \gamma_{k,n}^{1,L} \mathcal{C}_k}_{R_n^{1,L}} + \underbrace{\sum_{k \in \mathbb{N}} \gamma_{k,n}^{1,S} \mathcal{C}_k}_{R_n^{1,S}}, \tag{2.19}$$

where

$$\gamma_{k,n}^{1,S} = \gamma_{k,n} \mathbb{1}_{\{T_k < k^{1/3}\}}, \quad \gamma_{k,n}^{1,L} = \gamma_{k,n} \mathbb{1}_{\{T_k \geq k^{1/3}\}}. \tag{2.20}$$

1. To estimate $R_n^{1,S}$, as in (2.12) and (2.13) we apply the Markov inequality, estimate the moments and obtain

$$\mathbb{P}(|R_n^{1,S}| > \varepsilon) \leq c_N n^{-N/3}. \tag{2.21}$$

Since we can choose $N > 3$ in (2.21), we conclude that $\mathbb{P}(|R_n^{1,S}| > \varepsilon)$ is summable in n and therefore, by the Borel-Cantelli lemma,

$$\limsup_{n \rightarrow \infty} |R_n^{1,S}| \leq \varepsilon \quad \mathbb{P} - \text{a.s.} \tag{2.22}$$

Multi-layer Split	Moments	Concentration
$R_n = \frac{R_n^{1,L}}{\downarrow} + R_n^{1,S}$	$\limsup_n R_n^{1,S} \leq \varepsilon$	
$R_n^{1,L} = \frac{R_n^{2,L}}{\vdots} + R_n^{2,S}$	$\limsup_n R_n^{2,S} \leq \varepsilon$	
\vdots	\vdots	
$R_n^{M-1,L} = \boxed{R_n^{M,L}} + R_n^{M,S}$	$\limsup_n R_n^{M,S} \leq \varepsilon$	$\limsup_n R_n^{M,L} \leq \varepsilon$

Table 2: Splitting scheme.

2. To estimate $R_n^{1,L}$, the idea is to it decompose iteratively, as we did with R_n in (2.19), and control the small increments with moment bounds until we can apply concentration estimates. The resulting scheme is summarised in Table 2.

2a. To build the second split, we relabel the terms in $R_n^{1,L}$, i.e., we choose an ordered subsequence $(k_j^1)_{j \in \mathbb{N}}$ such that

$$\{k_1^1, k_2^1, \dots\} = \{j \in \mathbb{N} : T_j \geq j^{1/3}\}. \tag{2.23}$$

If this is finite, then $\lim_{n \rightarrow \infty} R_n^{1,L} = 0$. Thus, we need only consider the case where (2.23) is infinite. Denoting by $J(1; n)$ the cardinality of $\{k_j^1 : \tau(k_j^1) \leq n\}$, we define the second split:

$$R_n^{1,L} = \sum_{j=1}^{J(1;n)} \gamma_{k_j^1, n} \mathcal{C}_{k_j^1} = \underbrace{\sum_{j=1}^{J(1;n)} \gamma_{k_j^1, n}^{2,L} \mathcal{C}_{k_j^1}}_{R_n^{2,L}} + \underbrace{\sum_{j=1}^{J(1;n)} \gamma_{k_j^1, n}^{2,S} \mathcal{C}_{k_j^1}}_{R_n^{2,S}}, \tag{2.24}$$

where

$$\gamma_{k_j^1, n}^{2,S} = \gamma_{k_j^1, n} \mathbb{1}_{\{T_{k_j^1} < j^{2/3}\}}, \quad \gamma_{k_j^1, n}^{2,L} = \gamma_{k_j^1, n} \mathbb{1}_{\{T_{k_j^1} \geq j^{2/3}\}}. \tag{2.25}$$

Next, we abbreviate $n(1; J) = \inf\{n : J(1; n) = J\}$. Then, since

$$\limsup_{n \rightarrow \infty} |R_n^{2,S}| = \limsup_{J \rightarrow \infty} |R_{n(1;J)}^{2,S}|, \tag{2.26}$$

it suffices to show that $\limsup_{J \rightarrow \infty} |R_{n(1;J)}^{2,S}| \leq \varepsilon$ \mathbb{P} - a.s. Note that, since $T_{k_j^1} \geq j^{1/3}$, we have a lower bound on $n(1; J)$:

$$n(1; J) \geq \sum_{j=1}^J T_{k_j^1} \geq \sum_{j=1}^J j^{1/3} \geq c J^{4/3}, \tag{2.27}$$

which yields

$$\gamma_{k_j^1, n(1;J)}^{2,S} \leq \frac{j^{2/3}}{c J^{4/3}} \leq \frac{1}{c J^{2/3}}. \tag{2.28}$$

Similarly to the first split, we apply the Markov inequality

$$\mathbb{P} \left(\left| R_{n(1;J)}^{2,S} \right| > \varepsilon \right) \leq \frac{1}{\varepsilon^{2N}} \mathbb{E} \left[\left(\sum_{j=1}^J \gamma_{k_j^1, n}^{2,S} \mathcal{C}_{k_j^1} \right)^{2N} \right], \tag{2.29}$$

and estimate moments

$$\mathbb{E} \left[\left(\sum_{j=1}^J \gamma_{k_j^1, n(1;J)}^{2,S} \mathcal{C}_{k_j^1} \right)^{2N} \right] \leq c_N J^{-N/3}. \tag{2.30}$$

Once we choose $N > 3$, this becomes summable in J . Therefore, by the Borel-Cantelli lemma and (2.26), we obtain

$$\limsup_{n \rightarrow \infty} |R_n^{2,S}| \leq \varepsilon \quad \mathbb{P} - \text{a.s.} \tag{2.31}$$

2b. We continue the induction step. For any $i < M$, after bounding $\limsup_{n \rightarrow \infty} |R_n^{i,S}|$, we relabel the terms in $R_n^{i,L}$ and define

$$\{k_1^i, k_2^i, \dots\} = \{j \in \mathbb{N} : T_{k_j^{i-1}} \geq j^{i/3}\}. \tag{2.32}$$

If this is finite, then $\lim_{n \rightarrow \infty} R_n^{i-1,L} = 0$. Denoting by $J(i; n)$ the cardinality of $\{k_j^i : \tau(k_j^i) \leq n\}$, we define the $(i + 1)$ -st split:

$$R_n^{i,L} = \sum_{j=1}^{J(i;n)} \gamma_{k_j^i, n} \mathcal{C}_{k_j^i} = \underbrace{\sum_{j=1}^{J(i;n)} \gamma_{k_j^i, n}^{i+1,L} \mathcal{C}_{k_j^i}}_{R_n^{i+1,L}} + \underbrace{\sum_{j=1}^{J(i;n)} \gamma_{k_j^i, n}^{i+1,S} \mathcal{C}_{k_j^i}}_{R_n^{i+1,S}}, \tag{2.33}$$

where

$$\gamma_{k_j^i, n}^{i+1,S} = \gamma_{k_j^i, n} \mathbb{1}_{\{T_{k_j^i} < j^{(i+1)/3}\}}, \quad \gamma_{k_j^i, n}^{i+1,L} = \gamma_{k_j^i, n} \mathbb{1}_{\{T_{k_j^i} \geq j^{(i+1)/3}\}}. \tag{2.34}$$

Let $n(i; J) = \inf\{n : J(i; n) = J\}$. Then, by a similar computation as in (2.27) and (2.28), we have the following bounds:

$$n(i; J) \geq cJ^{1+i/3}, \quad \gamma_{k_j^i, n(i;J)}^{i+1,S} \leq \frac{1}{cJ^{2/3}}. \tag{2.35}$$

Using the Markov inequality and moments bounds, we obtain

$$\sum_{J \in \mathbb{N}} \mathbb{P} \left(\left| R_{n(i;J)}^{i+1,S} \right| > \varepsilon \right) < \infty. \tag{2.36}$$

Therefore we conclude that

$$\limsup_{n \rightarrow \infty} |R_n^{i+1,S}| \leq \varepsilon \quad \mathbb{P} - \text{a.s.} \tag{2.37}$$

2c. Once we bound $\limsup_{n \rightarrow \infty} |R_n^{M,S}|$, we are left with the term $R_n^{M,L}$. Since

$$R_n^{M,L} = \sum_{j \in \mathbb{N}} \gamma_{k_j^M, n} \mathbb{1}_{\{T_{k_j^{M-1}} > j^{M/3}\}} \mathcal{C}_{k_j^{M-1}} \tag{2.38}$$

and $\frac{M}{3}\delta > 1$, we apply (1.29) to obtain

$$\sum_{j \in \mathbb{N}} \mathbb{P} \left(\left| \mathcal{C}_{k_j^{M-1}} \mathbb{1}_{\{T_{k_j^{M-1}} > j^{M/3}\}} \right| > \varepsilon \right) < \infty. \tag{2.39}$$

Hence, by the Borel-Cantelli lemma,

$$\limsup_{j \rightarrow \infty} |\mathcal{C}_{k_j^{M-1}}| \mathbb{1}_{\{T_{k_j^{M-1}} > j^{M/3}\}} \leq \varepsilon \quad \mathbb{P} - \text{a.s.} \tag{2.40}$$

Since $\lim_{n \rightarrow \infty} \gamma_{k,n} = 0$ for fixed k and $\sum_{k \in \mathbb{N}} \gamma_{k,n} \leq 1$, we obtain

$$\limsup_{n \rightarrow \infty} |R_n^{M,L}| \leq \varepsilon \quad \mathbb{P} - \text{a.s.} \tag{2.41}$$

3. Combining (2.41) and (2.37) for $i < M$, we conclude that

$$\limsup_{n \rightarrow \infty} |R_n| \leq (M + 1)\varepsilon \quad \mathbb{P} - \text{a.s.} \tag{2.42}$$

and (2.6) follows since $\varepsilon > 0$ is arbitrary.

2.2 Boundary term

We next show that

$$\limsup_{n \rightarrow \infty} |B_n| = 0 \quad \mathbb{P} - \text{a.s.} \tag{2.43}$$

Let $V_k = \sup\{\bar{\gamma}^n |\bar{\mathcal{C}}^n| : n \in I_k\}$. Because $\cup_{k \in \mathbb{N}} I_k = \mathbb{R}_+$ (see (1.16)), we have

$$\limsup_{n \rightarrow \infty} \bar{\gamma}^n |\bar{\mathcal{C}}^n| = \limsup_{k \rightarrow \infty} V_k. \tag{2.44}$$

It therefore suffices to show that for arbitrary $\varepsilon > 0$,

$$\limsup_{k \rightarrow \infty} V_k \leq \varepsilon \quad \mathbb{P} - \text{a.s.} \tag{2.45}$$

If $\bar{\gamma}^n \leq \varepsilon$, then using Assumption (A2) we can bound $|B_n| \leq C\varepsilon$. Therefore, for $n \in I_k$ we only need to consider $\bar{\gamma}^n > \varepsilon$ (see Fig. 5), in which case we see that

$$n > \frac{\tau(k-1)}{1-\varepsilon} = N_{k,\varepsilon}. \tag{2.46}$$

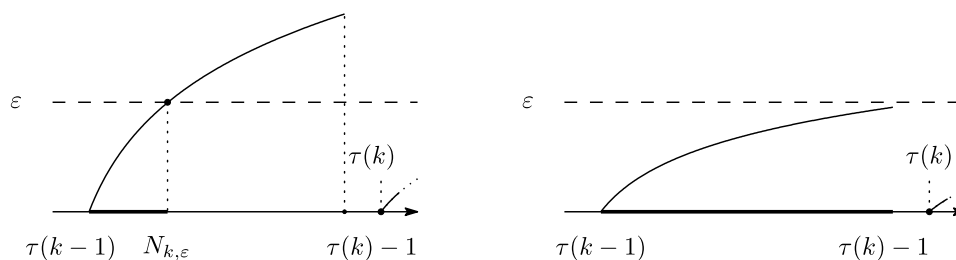


Figure 5: The curve of $\bar{\gamma}^n$. *Left:* If $N_{k,\varepsilon} < \tau(k)$, then $\bar{\gamma}_n \leq \varepsilon$ for $n \in [\tau(k-1), N_{k,\varepsilon})$ and $\bar{\gamma}_n > \varepsilon$ for $n \in [N_{k,\varepsilon}, \tau(k))$. *Right:* If $N_{k,\varepsilon} \geq \tau(k)$, then $\bar{\gamma}_n \leq \varepsilon$ for all $n \in I_k$.

If $\tau(k) \leq N_{k,\varepsilon}$, then the interval I_k can be ignored. Defining

$$\{k_1, k_2, \dots\} = \{k \in \mathbb{N} : \tau(k) \geq N_{k,\varepsilon}\}, \tag{2.47}$$

our task reduces to showing that

$$\limsup_{j \rightarrow \infty} V_{k_j} \leq C\varepsilon \quad \mathbb{P} - \text{a.s.} \tag{2.48}$$

Note that the subsequence $(\tau(k_j))_{j \in \mathbb{N}}$ grows at least exponentially fast once

$$\tau(k_j) \geq N_{k_j, \varepsilon} > (1 + \varepsilon)\tau(k_j - 1) \geq (1 + \varepsilon)\tau(k_{j-1}) \geq (1 + \varepsilon)^{j-1}\tau(k_1). \tag{2.49}$$

Since $|B_n| \leq C\varepsilon$ for $n \in [\tau(k_j - 1), N_{k_j, \varepsilon})$ and $\bar{\gamma}^n \leq 1$, by letting $m = \bar{T}^n = n - \tau(k_j - 1)$ and noting that $(1 + \varepsilon)\tau(k_j - 1) \leq N_{k_j, \varepsilon}$, we obtain

$$\begin{aligned} \mathbb{P}(V_{k_j} > C\varepsilon) &= \mathbb{P}\left(\sup_{N_{k_j, \varepsilon} \leq n < \tau(k_j)} \bar{\gamma}_n |\bar{C}^n| > C\varepsilon\right) \leq \mathbb{P}\left(\sup_{N_{k_j, \varepsilon} \leq n < \tau(k_j)} |\bar{C}^n| > C\varepsilon\right) \\ &\leq \mathbb{P}\left(\sup_{\varepsilon\tau(k_j-1) \leq m < T_{k_j}} \left|\frac{\psi_m^{(k_j)}}{m} - \mathbb{E}\left[\frac{\psi_m^{(k_j)}}{m}\right]\right| > C\varepsilon\right). \end{aligned} \tag{2.50}$$

By the union bound applied to (2.50), we arrive at

$$\mathbb{P}(V_{k_j} > C\varepsilon) \leq \sum_{m=\varepsilon\tau(k_j-1)}^{T_{k_j}} \mathbb{P}\left(\left|\frac{\psi_m^{(k_j)}}{m} - \mathbb{E}\left[\frac{\psi_m^{(k_j)}}{m}\right]\right| > C\varepsilon\right). \tag{2.51}$$

By (2.8),

$$\mathbb{P}(V_{k_j} > C\varepsilon) \leq \sum_{m=\varepsilon\tau(k_j-1)}^{T_{k_j}} \frac{\tilde{C}}{m^\delta}, \tag{2.52}$$

for some $\tilde{C} = C'(C\varepsilon) > 0$ not depending on k_j .

Case $\delta > 1$. From (2.52) we see that

$$\mathbb{P}(V_{k_j} > C\varepsilon) \leq \frac{C''}{\varepsilon\tau(k_j - 1)^{\delta-1}}. \tag{2.53}$$

If $\delta > 1$, then together with (2.49) this implies that (2.53) is summable in j . Hence, by the Borel-Cantelli lemma, we obtain

$$\limsup_{j \rightarrow \infty} V_{k_j} \leq C\varepsilon \quad \mathbb{P} - \text{a.s.} \tag{2.54}$$

Case $\delta < 1$. In this case, we need a more refined argument to prove (2.43). To control the boundary term on the interval I_{k_j} , we construct a sequence of times $(J_i)_{i \in \mathbb{N}_0}$ such that $J_0 = \varepsilon\tau(k_j - 1)$ and $J_i = (1 + \varepsilon)J_{i-1}$. For $m \in (J_i, J_{i+1})$, using (1.31) and the triangle inequality, we obtain that

$$\left|\frac{\psi_m^{(k_j)}}{m} - \frac{\psi_{J_i}^{(k_j)}}{J_i}\right| \leq 2C\varepsilon. \tag{2.55}$$

Hence

$$\begin{aligned} \left|\frac{\psi_m^{(k_j)}}{m} - \mathbb{E}\left[\frac{\psi_m^{(k_j)}}{m}\right]\right| &\leq \left|\frac{\psi_m^{(k_j)}}{m} - \frac{\psi_{J_i}^{(k_j)}}{J_i}\right| + \left|\frac{\psi_{J_i}^{(k_j)}}{J_i} - \mathbb{E}\left[\frac{\psi_{J_i}^{(k_j)}}{J_i}\right]\right| + \left|\mathbb{E}\left[\frac{\psi_m^{(k_j)}}{m} - \frac{\psi_{J_i}^{(k_j)}}{J_i}\right]\right| \\ &\leq \left|\frac{\psi_{J_i}^{(k_j)}}{J_i} - \mathbb{E}\left[\frac{\psi_{J_i}^{(k_j)}}{J_i}\right]\right| + 4C\varepsilon. \end{aligned} \tag{2.56}$$

Therefore

$$\left\{\sup_{\varepsilon\tau(k_j-1) \leq m < T_{k_j}} \left|\frac{\psi_m^{(k_j)}}{m} - \mathbb{E}\left[\frac{\psi_m^{(k_j)}}{m}\right]\right| > 5C\varepsilon\right\} \subset \left\{\sup_{i \in \mathbb{N}_0} \left|\frac{\psi_{J_i}^{(k_j)}}{J_i} - \mathbb{E}\left[\frac{\psi_{J_i}^{(k_j)}}{J_i}\right]\right| > C\varepsilon\right\}. \tag{2.57}$$

Hence, arguing as in (2.50) and using (2.57), the union bound and (2.8), we can estimate

$$\begin{aligned} \mathbb{P}(V_{k_j} > 5C\varepsilon) &= \mathbb{P}\left(\sup_{\varepsilon\tau(k_j-1) \leq m < T_{k_j}} \left| \frac{\psi_m^{(k_j)}}{m} - \mathbb{E}\left[\frac{\psi_m^{(k_j)}}{m}\right] \right| > 5C\varepsilon\right) \\ &\leq \mathbb{P}\left(\exists i \in \mathbb{N}_0 : \left| \frac{\psi_{J_i}^{(k_j)}}{J_i} - \mathbb{E}\left[\frac{\psi_{J_i}^{(k_j)}}{J_i}\right] \right| > C\varepsilon\right) \\ &\leq \sum_{i \in \mathbb{N}_0} \frac{C'}{J_i^\delta} = \sum_{i \in \mathbb{N}_0} \frac{C'}{(1+\varepsilon)^{i\delta} (\varepsilon\tau(k_j-1))^\delta}, \end{aligned} \tag{2.58}$$

which is summable in j due to (2.49). By the Borel-Cantelli lemma, we conclude that

$$\limsup_{n \rightarrow \infty} |B_n| \leq 5C\varepsilon \quad \mathbb{P} - \text{a.s.} \tag{2.59}$$

Since $\varepsilon > 0$ is arbitrary, (2.59) and (2.54) imply (2.43).

2.3 Deterministic term

To conclude the proof of Theorem 1.12, it remains to show that

$$\lim_{n \rightarrow \infty} \left(\sum_{k \in \mathbb{N}} \gamma_{k,n} L_{T_k}^{(k)} + \bar{\gamma}^n \bar{L}^n \right) = L, \tag{2.60}$$

where $\gamma_{k,n}$, $\bar{\gamma}^n$ is defined in (2.2), \bar{T}^n in (1.22), $L_{T_k}^{(k)}$ in (2.5) and \bar{L}^n in (2.4). First we recall that (1.29) and (A2) imply that $L_{T_k}^{(k)} - L \rightarrow 0$ uniformly in k . Since $\gamma_{k,n} \rightarrow 0$ as $n \rightarrow \infty$ and $\sum_{k \in \mathbb{N}} \gamma_n \leq 1$, by the Toeplitz Lemma [13, Thm.1.2.3, p. 36], we obtain

$$\lim_{n \rightarrow \infty} \sum_{k \in \mathbb{N}} \gamma_{k,n} (L_{T_k}^{(k)} - L) = 0. \tag{2.61}$$

As for the boundary part, if $\bar{\gamma}^n > \varepsilon$, then there is an $N \in \mathbb{N}$ such that for any $n > N$, $|\bar{L}^n - L| \leq \varepsilon$. Otherwise, $\bar{\gamma}^n |\bar{L}^n - L| \leq 2\varepsilon$. Since $\varepsilon > 0$ is arbitrary, we conclude (2.60).

Combining (2.6), (2.43) and (2.61), we get the claim in (1.30).

3 Concentration for RWRE

In this section we prove Theorem 1.13. We start in Section 3.1 by proving (1.32). In fact, as is usual in the context of RWRE, hitting times are easier to handle and their concentration will follow from an adaptation of an argument presented in the proof of Zeitouni [Lemma 3.4.10][16]. In Sections 3.3 and 3.4 we will show (1.33) and (1.34), respectively. Their proofs will be based on a key lemma, Lemma 3.1, which we state below.

Lemma 3.1 (Concentration of empirical speed on an interval).

Suppose that μ is α -basic. Let $\delta > 0$, and $\Delta = (a, b)$ or $\Delta = [a, b]$ with $a \neq b$.

- If $0 \leq a$, then for every $\varepsilon > 0$ there are positive constants C, c such that

$$\mu\left(\omega : \left| \frac{1}{n} \log P_0^\omega \left(\frac{Z_n}{n} \in \Delta \right) + \mathcal{I}(a) \right| > \varepsilon\right) \leq C e^{-cn^{1-\delta}}, \quad \forall n \in \mathbb{N}. \tag{3.1}$$

- If $b \leq 0$, then for every $\varepsilon > 0$ there are positive constants C, c such that

$$\mu\left(\omega : \left| \frac{1}{n} \log P_0^\omega \left(\frac{Z_n}{n} \in \Delta \right) + \mathcal{I}(b) \right| > \varepsilon\right) \leq C e^{-cn^{1-\delta}}, \quad \forall n \in \mathbb{N}. \tag{3.2}$$

3.1 Concentration for hitting times

Next we prove (1.32). The following argument is similar to [16, Lemma 3.4.10, p. 291].

Define, for fixed $K \in (0, \infty)$,

$$g^{\delta,n}(\omega) = \log E_0^\omega [e^{\lambda H_n} \mathbb{1}_{\{H_n < Kn\}} \mathbb{1}_{\{N^n < n^{\delta/2}\}}], \tag{3.3}$$

where $N^n = \sup_{x \in \mathbb{Z}} N_x^n$ and N_x^n is the number of visits at x before H_n . Note that $g^{\delta,n}(\omega)$ is a function of the environment coordinates $(\omega_i : |i| \leq Kn)$. For $i \in \mathbb{N}$, define

$$\begin{aligned} \mathcal{F}_0 &= \sigma\{\emptyset\}, \quad \mathcal{F}_1 = \sigma\{\omega_0\}, \quad \mathcal{F}_2 = \sigma\{\omega_0, \omega_1\}, \quad \mathcal{F}_3 = \sigma\{\omega_0, \omega_1, \omega_{-1}\}, \\ &\vdots \\ \mathcal{F}_i &= \sigma\{\omega_j : j \in (-\lceil i/2 \rceil, \lceil i/2 \rceil] \cap \mathbb{Z}\}, \end{aligned} \tag{3.4}$$

and denote by E^μ expectation with respect to μ . Then

$$E^\mu [g^{\delta,n} | \mathcal{F}_{2Kn}] = g^{\delta,n}, \quad E^\mu [g^{\delta,n} | \mathcal{F}_0] = E^\mu [g^{\delta,n}]. \tag{3.5}$$

Rewrite

$$g^{\delta,n}(\omega) - E^\mu [g^{\delta,n}] = \sum_{i=1}^{2Kn} d_i(\omega), \tag{3.6}$$

with

$$d_i(\omega) = E^\mu [g^{\delta,n} | \mathcal{F}_i](\omega) - E^\mu [g^{\delta,n} | \mathcal{F}_{i-1}](\omega). \tag{3.7}$$

Let $S_0 = E^\mu [g^{\delta,n}]$ and $S_m = \sum_{i=1}^m d_i(\omega)$. Since $E^\mu [d_i | \mathcal{F}_m] = 0$ for $i > m$, $\{S_m\}_{m \in \mathbb{N}_0}$ is a martingale. We obtain a bound for $d_i(\omega)$ by writing

$$d_{i+1}(\omega) = E^\mu [g^{\delta,n} | \mathcal{F}_{i+1}](\omega) - E^\mu [g^{\delta,n} | \mathcal{F}_i](\omega) \leq \sup_{\omega^i} [g^{\delta,n}(\omega^i) - g^{\delta,n}(\omega)] =: |d_i|_\infty, \tag{3.8}$$

where $\omega_x^i = \omega_x$ for all $x \in \mathbb{Z}$, except for

$$x_i = \begin{cases} -i/2, & \text{if } i \text{ is even,} \\ \lceil i/2 \rceil, & \text{if } i \text{ is odd.} \end{cases} \tag{3.9}$$

To compute the difference in (3.8), we use a bound on the derivative of $g^{\delta,n}(\omega)$. From the computations in [16, p. 291] we have that, for any $\delta \in (0, 1)$,

$$|d_i|_\infty \leq \left| \frac{\partial g^{\delta,n}(\omega)}{\partial \omega_{x_i}} \right| \leq \sqrt{K} \frac{n^{\delta/2}}{c}. \tag{3.10}$$

Applying the Azuma-Hoeffding inequality, we obtain

$$\mu(\omega : |S_{2Kn} - S_0| > u) \leq 2 \exp\left(-\frac{u^2}{2 \sum_{i=1}^{2Kn} |d_i|_\infty^2}\right). \tag{3.11}$$

Since $S_{2Kn} = g^{\delta,n}(\omega)$ and $S_0 = E^\mu [g^{\delta,n}]$, we obtain

$$\mu(\omega : |g^{\delta,n}(\omega) - E^\mu [g^{\delta,n}]| > un) \leq 2 \exp\left(-\frac{u^2 n^2}{C n^{1+\delta}}\right) \leq 2 \exp\left(-\frac{u^2}{C} n^{1-\delta}\right). \tag{3.12}$$

To conclude the proof of (1.32), we write

$$\begin{aligned} \mu\left(\omega : \left|\frac{1}{n} \log E_0^\omega [e^{\lambda H_n}] - \mathcal{J}^*(\lambda)\right| > \varepsilon\right) &\leq \mu\left(\omega : \frac{1}{n} \left|\log E_0^\omega [e^{\lambda H_n}] - g^{\delta,n}(\omega)\right| > \frac{1}{3}\varepsilon\right) \\ &+ \mu\left(\omega : \frac{1}{n} |g^{\delta,n}(\omega) - E^\mu [g^{\delta,n}]| > \frac{1}{3}\varepsilon\right) + \mu\left(\omega : \left|\frac{1}{n} E^\mu [g^{\delta,n}] - \mathcal{J}^*(\lambda)\right| > \frac{1}{3}\varepsilon\right). \end{aligned} \tag{3.13}$$

We will estimate the second term in the right hand side by (3.12). Let us first show that the first and the third term vanish as $n \rightarrow \infty$. For the first term in (3.13), the ellipticity condition implies that for large n ,

$$\frac{1}{n} \left| \log E_0^\omega [e^{\lambda H_n}] - g^{\delta,n}(\omega) \right| < \frac{1}{3}\varepsilon. \tag{3.14}$$

Indeed, from the argument in the proof of [16, Lemma 3.4.10], specifically the computations just prior to the statement of [16, Lemma 3.4.14], we obtain the following estimate. For $K = K(\lambda)$ and n large enough,

$$E_0^\omega [e^{\lambda H_n} \mathbb{1}_{\{H_n < Kn\}} \mathbb{1}_{\{N^n < n^{\delta/2}\}}] \geq \frac{1}{2} E_0^\omega [e^{\lambda H_n}]. \tag{3.15}$$

Since

$$1 \leq \frac{E_0^\omega [e^{\lambda H_n}]}{E_0^\omega [e^{\lambda H_n} \mathbb{1}_{\{H_n < Kn\}} \mathbb{1}_{\{N^n < n^{\delta/2}\}}]} \leq 2, \tag{3.16}$$

it follows that

$$\lim_{n \rightarrow \infty} \frac{1}{n} (\log E_0^\omega [e^{\lambda H_n}] - g^{\delta,n}(\omega)) = 0, \tag{3.17}$$

which implies (3.14). Furthermore, since $\lim_{n \rightarrow \infty} \frac{1}{n} \log E_0^\omega [e^{\lambda H_n}] = \mathcal{J}^*(\lambda)$, (3.14) also implies that for n large enough the third term in (3.13) is zero. We conclude that for n large enough,

$$\mu \left(\omega : \left| \frac{1}{n} \log E_0^\omega [e^{\lambda H_n}] - \mathcal{J}^*(\lambda) \right| > \varepsilon \right) \leq \mu \left(\omega : \frac{1}{n} |g^{\delta,n}(\omega) - E_0^\omega [g^{\delta,n}]| > \frac{1}{3}\varepsilon \right). \tag{3.18}$$

Picking $u = \frac{1}{3}\varepsilon$ in (3.12), we obtain (1.32).

3.2 Proof of key lemma: concentration on intervals

3.2.1 Proof of Lemma 3.1: concentration on half lines

We first prove (3.1) for the special intervals $(u, 1]$ and $[u, 1]$ with $u \in (0, 1)$. Since $|Z_n| \leq n$, this amounts to showing that

$$\mu \left(\omega : \left| \frac{1}{n} \log P_0^\omega \left(\frac{Z_n}{n} \geq u \right) + \mathcal{I}(u) \right| > \varepsilon \right) \leq C e^{-cn^{1-\delta}}, \tag{3.19}$$

and

$$\mu \left(\omega : \left| \frac{1}{n} \log P_0^\omega \left(\frac{Z_n}{n} > u \right) + \mathcal{I}(u) \right| > \varepsilon \right) \leq C e^{-cn^{1-\delta}}. \tag{3.20}$$

The proof of (3.20) is analogous to the proof of (3.19). Furthermore, by a reflection argument, we can deduce (3.2) for the intervals $[-1, -u)$, $[-1, -u]$ from (3.19) and (3.20). Indeed, let $\tilde{\omega} = (\tilde{\omega}(x))_{x \in \mathbb{Z}} = (1 - \omega(-x))_{x \in \mathbb{Z}}$. For $u > 0$,

$$P_0^\omega \left(\frac{Z_n}{n} \leq -u \right) = P_0^{\tilde{\omega}} \left(\frac{Z_n}{n} \geq u \right).$$

Denoting by \mathcal{I}^ω the quenched rate function on ω , we get $\mathcal{I}^{\tilde{\omega}}(u) = \mathcal{I}^\omega(-u)$. Therefore

$$\frac{1}{n} \log P_0^\omega \left(\frac{Z_n}{n} \leq -u \right) + \mathcal{I}^\omega(-u) = \frac{1}{n} \log P_0^{\tilde{\omega}} \left(\frac{Z_n}{n} \geq u \right) + \mathcal{I}^{\tilde{\omega}}(u) \tag{3.21}$$

and

$$\begin{aligned} & \mu \left(\omega : \left| \frac{1}{n} \log P_0^\omega \left(\frac{Z_n}{n} \leq -u \right) + \mathcal{I}^\omega(-u) \right| > \varepsilon \right) \\ &= \mu \left(\omega : \left| \frac{1}{n} \log P_0^{\tilde{\omega}} \left(\frac{Z_n}{n} \geq u \right) + \mathcal{I}^{\tilde{\omega}}(u) \right| > \varepsilon \right) \\ &= \tilde{\mu} \left(\omega : \left| \frac{1}{n} \log P_0^\omega \left(\frac{Z_n}{n} \geq u \right) + \mathcal{I}^\omega(u) \right| > \varepsilon \right), \end{aligned} \tag{3.22}$$

where $\tilde{\mu}[\omega \in A] = \mu[\tilde{\omega} \in A]$ satisfies the conditions of Lemma 3.1. From (3.19) for μ , we obtain (3.19) for $\tilde{\mu}$, which is equivalent to the proof of (3.2) for intervals $[-1, -u]$. The proof of (3.2) for intervals $[-1, -u]$ is analogous.

To prove (3.20), we derive upper and lower bounds for $\frac{1}{n} \log P_0^\omega \left(\frac{Z_n}{n} \geq u \right) + \mathcal{I}(u)$.

Upper bound. To bound the probabilities on the displacements we can use the hitting times. For $u > 0$,

$$P_0^\omega \left(\frac{Z_n}{n} \geq u \right) \leq P_0^\omega (Z_n \geq \lfloor un \rfloor) \leq P_0^\omega (H_{\lfloor un \rfloor} \leq n). \tag{3.23}$$

By the Markov inequality, for $\theta < 0$,

$$P_0^\omega (H_{\lfloor un \rfloor} \leq n) \leq e^{-\theta n} E_0^\omega [e^{\theta H_{\lfloor un \rfloor}}], \tag{3.24}$$

and so

$$\begin{aligned} \frac{1}{n} \log P_0 \left(\frac{Z_n}{n} \geq u \right) &\leq -\theta + \frac{1}{n} \log E_0^\omega [e^{\theta H_{\lfloor un \rfloor}}] \\ &= -\theta + \frac{1}{n} \log E_0^\omega [e^{\theta H_{\lfloor un \rfloor}}] + u\mathcal{J}^*(\theta) - u\mathcal{J}^*(\theta) \\ &= -u \left(\theta \frac{1}{u} + O(\omega, un, \theta) - \mathcal{J}^*(\theta) \right), \end{aligned} \tag{3.25}$$

where

$$O(\omega, un, \theta) := \mathcal{J}^*(\theta) - \frac{1}{un} \log E_0^\omega [e^{\theta H_{\lfloor un \rfloor}}]. \tag{3.26}$$

Taking $\theta < 0$ such that $\theta \frac{1}{u} - \mathcal{J}^*(\theta) = \mathcal{J}(\frac{1}{u})$ (see Fig. 6) and using that $u\mathcal{J}(\frac{1}{u}) = \mathcal{I}(u)$, we get

$$\frac{1}{n} \log P_0^\omega \left(\frac{Z_n}{n} \geq u \right) + \mathcal{I}(u) \leq -u O(\omega, un, \theta). \tag{3.27}$$

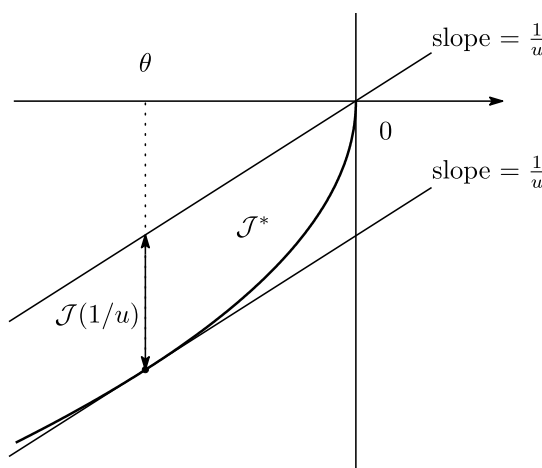


Figure 6: The function $x \mapsto \frac{1}{u}x - \mathcal{J}^*(x)$ attains its maximum at θ .

Therefore, using (1.32), we arrive at

$$\mu \left(\omega : \frac{1}{n} \log P_0^\omega \left(\frac{Z_n}{n} \geq u \right) + \mathcal{I}(u) > \varepsilon \right) \leq \mu(\omega : |O(\omega, un, \theta)| > \varepsilon) < Ce^{-cn^{1-\delta}}. \tag{3.28}$$

Lower bound. The lower bound for $P_0^\omega \left(\frac{Z_n}{n} \geq u \right)$ is more subtle. Note that, since the steps of the random walk are either $+1$ or -1 , for $d > 0$, we have

$$n < H_x < n + dn \implies Z_n > x - dn. \tag{3.29}$$

Therefore,

$$P_0^\omega \left(\frac{Z_n}{n} \geq u \right) \geq P_0^\omega (Z_n \geq \lceil un \rceil) \geq P_0^\omega (n \leq H_{\lceil un \rceil + \lfloor dn \rfloor} \leq n + \lfloor dn \rfloor). \tag{3.30}$$

Now, let $m = \lceil un \rceil + \lfloor dn \rfloor$. Note that if $n \leq H_m \leq n + \lfloor dn \rfloor$, then

$$\frac{1}{u + d + r_n} \leq \frac{H_m}{m} \leq \frac{1 + d + \tilde{r}_n}{u + d + r_n} \tag{3.31}$$

with $r_n, \tilde{r}_n \rightarrow 0$ as $n \rightarrow \infty$. Let \tilde{d} and \tilde{u} be such that

$$\frac{1}{u + d} < \frac{1}{\tilde{u}} - \tilde{d} < \frac{1}{\tilde{u}} + \tilde{d} < \frac{1 + d}{u + d}. \tag{3.32}$$

Letting $B_{\tilde{d}} \left(\frac{1}{\tilde{u}} \right)$ denote the ball with center $\frac{1}{\tilde{u}}$ and radius \tilde{d} , we have, for n large enough,

$$\frac{1}{n} \log P_0^\omega \left(\frac{Z_n}{n} \geq u \right) \geq \frac{1}{n} \log P_0^\omega \left(\frac{H_m}{m} \in B_{\tilde{d}} \left(\frac{1}{\tilde{u}} \right) \right). \tag{3.33}$$

If $d \rightarrow 0$, then $|\tilde{u} - u| \rightarrow 0$ and $\tilde{d} \rightarrow 0$. Note that $E_0^\omega [e^{\zeta H_m}] < \infty$ for $\zeta < 0$. We define the ζ -tilted probability measure

$$\frac{dP_0^{\omega, \zeta, m}}{dP_0^{\omega, m}}(y) = \frac{e^{m\zeta y}}{E_0^\omega [e^{\zeta H_m}]}, \quad P_0^{\omega, m}(\cdot) = P_0^\omega \left(\frac{H_m}{m} \in \cdot \right). \tag{3.34}$$

Recalling that $E_0^\omega [e^{\zeta H_m}] = \int e^{m\zeta y} dP_0^{\omega, m}(y)$, we compute

$$\begin{aligned} \frac{1}{n} \log P_0^\omega \left(\frac{H_m}{m} \in B_{\tilde{d}} \left(\frac{1}{\tilde{u}} \right) \right) &= \frac{1}{n} \log \int_{B_{\tilde{d}} \left(\frac{1}{\tilde{u}} \right)} dP_0^{\omega, m}(y) \\ &= \frac{1}{n} \log \int_{B_{\tilde{d}} \left(\frac{1}{\tilde{u}} \right)} \frac{E_0^\omega [e^{\zeta H_m}]}{e^{m\zeta y}} dP_0^{\omega, \zeta, m}(y). \end{aligned} \tag{3.35}$$

Now, since $\zeta < 0$,

$$y \in B_{\tilde{d}} \left(\frac{1}{\tilde{u}} \right) \implies e^{-m\zeta y} \geq e^{-m\zeta \left(\frac{1}{\tilde{u}} - \tilde{d} \right)}. \tag{3.36}$$

Inserting this into (3.35) and replacing $\frac{1}{n} \log E_0^\omega [e^{\zeta H_m}]$ by $-\frac{m}{n} [O(\omega, m, \zeta) - \mathcal{J}^*(\zeta)]$, yields:

$$\begin{aligned} &\frac{1}{n} \log P_0^\omega \left(\frac{H_m}{m} \in B_{\tilde{d}} \left(\frac{1}{\tilde{u}} \right) \right) \\ &\geq \frac{1}{n} \log E_0^\omega [e^{\zeta H_m}] - \frac{m}{n} \zeta \left(\frac{1}{\tilde{u}} - \tilde{d} \right) + \frac{1}{n} \log P_0^{\omega, \zeta, m} \left(B_{\tilde{d}} \left(\frac{1}{\tilde{u}} \right) \right) \\ &= -\hat{u}_n \left[\left(\zeta \frac{1}{\hat{u}_n} - \mathcal{J}^*(\zeta) \right) + O(\omega, m, \zeta) \right] - \hat{d}\zeta + \frac{1}{n} \log P_0^{\omega, \zeta, m} \left(B_{\tilde{d}} \left(\frac{1}{\tilde{u}} \right) \right), \end{aligned} \tag{3.37}$$

where $\hat{u}_n = \frac{m}{n}$ and \hat{d} is defined by the relation $\frac{m}{n} \left(\frac{1}{\tilde{u}} - \tilde{d} \right) = 1 + \hat{d}$. Note that

$$\hat{u}_n \rightarrow u, \hat{d} \rightarrow 0 \quad \text{as} \quad d \rightarrow 0, n \rightarrow \infty. \tag{3.38}$$

Since $\zeta \frac{1}{\hat{u}_n} - \mathcal{J}^*(\zeta) \leq \mathcal{J}(\frac{1}{\hat{u}_n})$ and (1.13), combining (3.37) with (3.33) we obtain

$$\begin{aligned} \frac{1}{n} \log P_0^\omega \left(\frac{Z_n}{n} \geq u \right) + \mathcal{I}(u) &\geq \mathcal{I}(u) - \mathcal{I}(\hat{u}_n) - \hat{u}_n O(\omega, m, \zeta) - \hat{d}\zeta \\ &+ \frac{1}{n} \log P_0^{\omega, \zeta, m} \left(B_{\hat{d}} \left(\frac{1}{\hat{u}} \right) \right). \end{aligned} \tag{3.39}$$

Therefore, taking d small enough and n large enough so that

$$|\mathcal{I}(u) - \mathcal{I}(\hat{u}_n)| + |\hat{d}\zeta| < \frac{1}{2}\varepsilon, \tag{3.40}$$

we get

$$\begin{aligned} &\mu \left(\omega : \frac{1}{n} \log P_0^\omega \left(\frac{Z_n}{n} \geq u \right) + \mathcal{I}(u) < -\varepsilon \right) \\ &\leq \mu \left(\omega : -\hat{u}_n O(\omega, m, \zeta) + \frac{1}{n} \log P_0^{\omega, \zeta, m} \left(B_{\hat{d}} \left(\frac{1}{\hat{u}} \right) \right) < -\frac{1}{2}\varepsilon \right) \\ &\leq \mu \left(\omega : -\hat{u}_n O(\omega, m, \zeta) < -\frac{1}{4}\varepsilon \right) + \mu \left(\omega : \frac{1}{n} \log P_0^{\omega, \zeta, m} \left(B_{\hat{d}} \left(\frac{1}{\hat{u}} \right) \right) < -\frac{1}{4}\varepsilon \right). \end{aligned} \tag{3.41}$$

From (1.32) and the fact that $0 < \hat{u}_n \leq 1$, it follows that

$$\mu \left(\omega : \hat{u}_n |O(\omega, m, \zeta)| > \frac{1}{4}\varepsilon \right) \leq C e^{-cn^{1-\delta}}. \tag{3.42}$$

It therefore remains to prove that

$$\mu \left(\omega : \frac{1}{n} \log P_0^{\omega, \zeta, m} \left(B_{\hat{d}} \left(\frac{1}{\hat{u}} \right) \right) < -\frac{1}{4}\varepsilon \right) \leq C e^{-cn^{1-\delta}}. \tag{3.43}$$

Let $E_0^{\omega, \zeta, m}[f(Y)]$ be expectation of f with respect to $P_0^{\omega, \zeta, m}(dY)$ and $E_0^{\omega, m}[f(Y)]$ be expectation of f with respect to $P_0^{\omega, m}(dY)$. Then

$$E_0^{\omega, \zeta, m} [e^{m\theta Y}] = \frac{E_0^{\omega, m} [e^{m(\theta+\zeta)Y}]}{E_0^{\omega, m} [e^{m\zeta Y}]} = \frac{E_0^\omega [e^{(\theta+\zeta)H_m}]}{E_0^\omega [e^{\zeta H_m}]}. \tag{3.44}$$

We have

$$P_0^{\omega, \zeta, m} \left(B_{\hat{d}} \left(\frac{1}{\hat{u}} \right)^c \right) = \underbrace{P_0^{\omega, \zeta, m} \left(Y > \frac{1}{\hat{u}} + \hat{d} \right)}_I + \underbrace{P_0^{\omega, \zeta, m} \left(Y < \frac{1}{\hat{u}} - \hat{d} \right)}_{II}. \tag{3.45}$$

Since \mathcal{J} is strictly convex in $\frac{1}{\hat{u}} \in (1, \frac{1}{v_\mu}]$, we can pick $\zeta = \mathcal{J}'(\frac{1}{\hat{u}}) < 0$ to be an exposing plane, i.e., ζ is such that, for any $y \neq \frac{1}{\hat{u}}$,

$$\mathcal{J}(y) - \mathcal{J} \left(\frac{1}{\hat{u}} \right) > \left(y - \frac{1}{\hat{u}} \right) \zeta. \tag{3.46}$$

We note here that the strict convexity of \mathcal{J}^* on $(-\infty, 0]$ implies the strict convexity of \mathcal{J} on $(1, \frac{1}{v_\mu}]$ (recall the relation between \mathcal{J} and \mathcal{J}^* in (1.10)). Since $\frac{1}{\hat{u}} + \hat{d} > \frac{1}{\hat{u}} > \frac{1}{\hat{u}} - \hat{d}$, we can pick $\theta > 0$ and $\sigma < 0$ such that (see Fig. 7)

$$\begin{aligned} (\theta + \zeta) \left(\frac{1}{\hat{u}} + \hat{d} \right) - \mathcal{J} \left(\frac{1}{\hat{u}} + \hat{d} \right) &= \mathcal{J}^*(\theta + \zeta), \\ (\sigma + \zeta) \left(\frac{1}{\hat{u}} - \hat{d} \right) - \mathcal{J} \left(\frac{1}{\hat{u}} - \hat{d} \right) &= \mathcal{J}^*(\sigma + \zeta). \end{aligned} \tag{3.47}$$

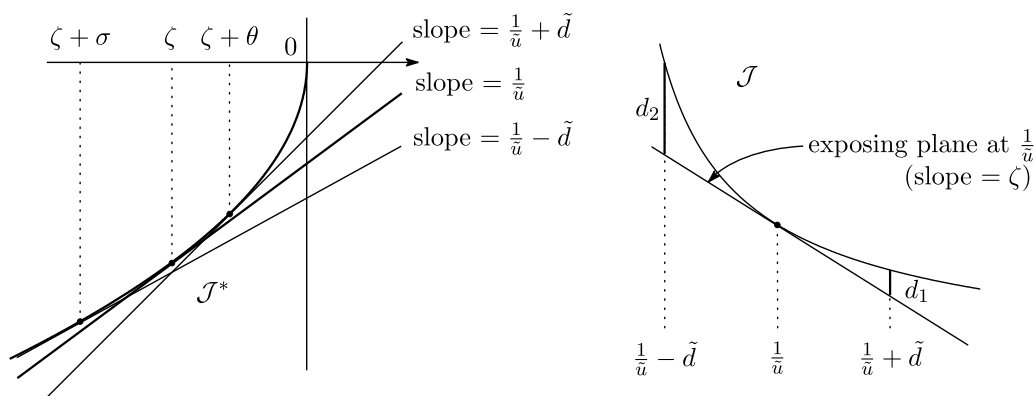


Figure 7: *Left*: The graph shows the implicit relation between \mathcal{J} and \mathcal{J}^* : for $x < v_\mu^{-1}$, $\mathcal{J}(x) = xy - \mathcal{J}^*(y)$ with $x = (\mathcal{J}^*)'(y)$. The equations in (3.47) follow from this relation. *Right*: The exposing plane condition shows that d_1 in (3.49) and d_2 in (3.52) are strictly positive.

Bound for I. For $\theta > 0$,

$$\begin{aligned}
 P_0^{\omega, \zeta, m} \left(Y > \frac{1}{\tilde{u}} + \tilde{d} \right) &\leq e^{-m\theta(\frac{1}{\tilde{u}} + \tilde{d})} E_0^{\omega, \zeta, m} [e^{\theta Y}] \\
 &= \exp \left\{ m \left[-\theta \left(\frac{1}{\tilde{u}} + \tilde{d} \right) + \frac{1}{m} \left(\log E_0^\omega [e^{(\theta + \zeta)H_m}] - \log E_0^\omega [e^{\zeta H_m}] \right) \right] \right\} \\
 &\leq \exp \left\{ m \left[-\theta \left(\frac{1}{\tilde{u}} + \tilde{d} \right) + \mathcal{J}^*(\theta + \zeta) - \mathcal{J}^*(\zeta) - O(\omega, m, \theta + \zeta) + O(\omega, m, \zeta) \right] \right\}.
 \end{aligned} \tag{3.48}$$

By (3.46) with $y = \frac{1}{\tilde{u}} + \tilde{d}$, we find that

$$\begin{aligned}
 &-\theta \left(\frac{1}{\tilde{u}} + \tilde{d} \right) + \mathcal{J}^*(\theta + \zeta) - \mathcal{J}^*(\zeta) \\
 &= -(\theta + \zeta) \left(\frac{1}{\tilde{u}} + \tilde{d} \right) + \mathcal{J}^*(\theta + \zeta) - \mathcal{J}^*(\zeta) + \zeta \left(\frac{1}{\tilde{u}} + \tilde{d} \right) \\
 &= -\mathcal{J} \left(\frac{1}{\tilde{u}} + \tilde{d} \right) + \zeta \left(\frac{1}{\tilde{u}} + \tilde{d} \right) - \mathcal{J}^*(\zeta) \\
 &\leq -\mathcal{J} \left(\frac{1}{\tilde{u}} + \tilde{d} \right) + \zeta \left(\frac{1}{\tilde{u}} + \tilde{d} \right) - \zeta \frac{1}{\tilde{u}} + \mathcal{J} \left(\frac{1}{\tilde{u}} \right) = -d_1 < 0
 \end{aligned} \tag{3.49}$$

(see Fig. 7). On the set $A_I = \{ \omega : |O(\omega, m, \theta + \zeta) - O(\omega, m, \zeta)| < \frac{1}{2} |d_1| \}$, we have

$$P_0^{\omega, \zeta, m} \left(Y > \frac{1}{\tilde{u}} + \tilde{d} \right) < e^{-m \frac{|d_1|}{2}} \rightarrow 0. \tag{3.50}$$

Bound for II. Again, for $\sigma < 0$,

$$\begin{aligned}
 P_0^{\omega, \zeta, m} \left(Y < \frac{1}{\tilde{u}} - \tilde{d} \right) &\leq e^{-m\sigma(\frac{1}{\tilde{u}} - \tilde{d})} E_0^{\omega, \zeta, m} [e^{\sigma Y}] \\
 &= \exp \left\{ m \left[-\sigma \left(\frac{1}{\tilde{u}} - \tilde{d} \right) + \frac{1}{m} \left(\log E_0^\omega [e^{(\sigma + \zeta)H_m}] - \log E_0^\omega [e^{\zeta H_m}] \right) \right] \right\} \\
 &\leq \exp \left\{ m \left[-\sigma \left(\frac{1}{\tilde{u}} - \tilde{d} \right) + \mathcal{J}^*(\sigma + \zeta) - \mathcal{J}^*(\zeta) - O(\omega, m, \sigma + \zeta) + O(\omega, m, \zeta) \right] \right\}.
 \end{aligned} \tag{3.51}$$

Similarly to (3.49), using (3.46) with $y = \frac{1}{\tilde{u}} - \tilde{d}$, we obtain

$$-\sigma \left(\frac{1}{\tilde{u}} - \tilde{d} \right) + \mathcal{J}^*(\sigma + \zeta) - \mathcal{J}^*(\zeta) = -d_2 < 0 \tag{3.52}$$

(see Fig 7). For $\omega \in A_{II} = \{ \omega : |O(\omega, m, \sigma + \zeta) - O(\omega, m, \zeta)| < \frac{1}{2} |d_2| \}$,

$$P_0^{\omega, \zeta, m} \left(Y < \frac{1}{\tilde{u}} - \tilde{d} \right) < e^{-m \frac{1}{2} |d_2|} \rightarrow 0. \tag{3.53}$$

Conclusion. For n large enough, using (3.50) and (3.53) we see that

$$\omega \in A_I \cap A_{II} \implies P_0^{\omega, \zeta, m} \left(B_{\tilde{d}} \left(\frac{1}{\tilde{u}} \right)^c \right) < \frac{1}{2} \implies P_0^{\omega, \zeta, m} \left(B_{\tilde{d}} \left(\frac{1}{\tilde{u}} \right) \right) \geq \frac{1}{2}, \tag{3.54}$$

and therefore, for large n , we conclude that

$$\left| \frac{1}{n} \log P_0^{\omega, \zeta, m} \left(B_{\tilde{d}} \left(\frac{1}{\tilde{u}} \right) \right) \right| < \frac{1}{n} \log 2 < \frac{1}{4} \varepsilon. \tag{3.55}$$

Hence

$$\mu \left(\omega : \frac{1}{n} \log P_0^{\omega, \zeta, m} \left(B_{\tilde{d}} \left(\frac{1}{\tilde{u}} \right) \right) < -\frac{1}{4} \varepsilon \right) \leq \mu(A_I^c) + \mu(A_{II}^c). \tag{3.56}$$

To complete the proof, note that (1.32) implies

$$\mu(A_I^c) + \mu(A_{II}^c) \leq C e^{-cn^{1-\delta}}. \tag{3.57}$$

It is worth mentioning that the constant in (3.57) does not depend on n . For fixed u we choose $\varepsilon > 0$, and (3.40) together with (3.38) gives us d, \tilde{d} and \tilde{u} . After that, d_1, d_2 are given by the exposing plane conditions at the boundary of the ball of radius \tilde{d} centered at $\frac{1}{\tilde{u}}$ (see (3.49) and (3.52)). Thus, even though the constant in (3.57) depends on d_1, d_2 , the latter are functions of u and ε only, and not of n . The latter estimate, together with the bounds in (3.41) and (3.42), yield

$$\mu \left(\omega : \frac{1}{n} \log P_0^\omega \left(\frac{Z_n}{n} \geq u \right) + \mathcal{I}(u) < -\varepsilon \right) < C e^{-cn^{1-\delta}}. \tag{3.58}$$

Therefore (3.20) in Lemma 3.1 follows from (3.28) and (3.58).

3.2.2 Proof of Lemma 3.1: general intervals

We will split the proof for general $\Delta = (a, b]$ in two cases. The proof for $\Delta = [a, b]$ is similar.

Case $0 \leq a$. We start from the equation

$$P_0^\omega \left(\frac{Z_n}{n} \in \Delta \right) = P_0^\omega \left(\frac{Z_n}{n} > a \right) - P_0^\omega \left(\frac{Z_n}{n} > b \right). \tag{3.59}$$

Define $e(\omega, u, n) := \frac{1}{n} \log P_0^\omega \left(\frac{Z_n}{n} > u \right) + \mathcal{I}(u)$. Since $\mathcal{I}(b) - \mathcal{I}(a) = \eta > 0$, we obtain

$$\frac{P_0^\omega \left(\frac{Z_n}{n} > a \right)}{P_0^\omega \left(\frac{Z_n}{n} > b \right)} = e^{n(\mathcal{I}(b) - \mathcal{I}(a) + e(\omega, a, n) - e(\omega, b, n))} = e^{n(\eta + e(\omega, a, n) - e(\omega, b, n))}. \tag{3.60}$$

When $|e(\omega, a, n) - e(\omega, b, n)| < \frac{1}{2} \eta$, we have

$$P_0^\omega \left(\frac{Z_n}{n} > b \right) \leq e^{-n \frac{\eta}{2}} P_0^\omega \left(\frac{Z_n}{n} > a \right). \tag{3.61}$$

For large enough n , as soon as $e^{-n\frac{\eta}{2}} < \frac{1}{2}$ we get

$$\frac{1}{2}P_0^\omega\left(\frac{Z_n}{n} > a\right) \leq P_0^\omega\left(\frac{Z_n}{n} \in \Delta\right) \leq P_0^\omega\left(\frac{Z_n}{n} > a\right), \tag{3.62}$$

which implies that

$$\left|\frac{1}{n}\log P_0^\omega\left(\frac{Z_n}{n} \in \Delta\right) - \frac{1}{n}\log P_0^\omega\left(\frac{Z_n}{n} > a\right)\right| < \frac{1}{n}\log 2. \tag{3.63}$$

Therefore

$$\begin{aligned} &\mu\left(\omega : \left|\frac{1}{n}\log P_0^\omega\left(\frac{Z_n}{n} \in \Delta\right) - \frac{1}{n}\log P_0^\omega\left(\frac{Z_n}{n} > a\right)\right| > \frac{1}{n}\log 2\right) \\ &\leq \mu\left(\omega : |e(\omega, a, n) - e(\omega, b, n)| > \frac{1}{2}\eta\right) \\ &\leq \mu\left(\omega : |e(\omega, a, n)| > \frac{1}{4}\eta\right) + \mu\left(\omega : |e(\omega, b, n)| > \frac{1}{4}\eta\right). \end{aligned} \tag{3.64}$$

Since the concentration (3.20) in Lemma 3.1 bounds both terms in (3.64), after we pick n large enough so that $\frac{\log 2}{n} < \varepsilon$, we obtain (3.1).

Case $b \leq 0$. In this case we have the following equation:

$$P_0^\omega\left(\frac{Z_n}{n} \in \Delta\right) = P_0^\omega\left(\frac{Z_n}{n} \leq b\right) - P_0^\omega\left(\frac{Z_n}{n} \leq a\right). \tag{3.65}$$

Similarly, we define $\tilde{e}(\omega, u, n) := \frac{1}{n}\log P_0^\omega\left(\frac{Z_n}{n} \leq u\right) + \mathcal{I}(u)$. Since $\mathcal{I}(a) - \mathcal{I}(b) = \eta > 0$, we obtain

$$\frac{P_0^\omega\left(\frac{Z_n}{n} \leq b\right)}{P_0^\omega\left(\frac{Z_n}{n} \leq a\right)} = e^{n(\mathcal{I}(a) - \mathcal{I}(b) - \tilde{e}(\omega, a, n) + \tilde{e}(\omega, b, n))} = e^{n(\eta + \tilde{e}(\omega, a, n) - \tilde{e}(\omega, b, n))}. \tag{3.66}$$

When $|\tilde{e}(\omega, a, n) - \tilde{e}(\omega, b, n)| < \frac{1}{2}\eta$,

$$P_0^\omega\left(\frac{Z_n}{n} \leq a\right) \leq e^{-n\frac{\eta}{2}} P_0^\omega\left(\frac{Z_n}{n} \leq b\right). \tag{3.67}$$

As we did in (3.61)–(3.63), for large n as soon as $e^{-n\frac{\eta}{2}} < \frac{1}{2}$ we conclude that

$$\begin{aligned} &\mu\left(\omega : \left|\frac{1}{n}\log P_0^\omega\left(\frac{Z_n}{n} \in \Delta\right) - \frac{1}{n}\log P_0^\omega\left(\frac{Z_n}{n} \leq b\right)\right| > \frac{1}{n}\log 2\right) \\ &\leq \mu\left(\omega : |\tilde{e}(\omega, a, n) - \tilde{e}(\omega, b, n)| > \frac{1}{2}\eta\right) \\ &\leq \mu\left(\omega : |\tilde{e}(\omega, a, n)| > \frac{1}{4}\eta\right) + \mu\left(\omega : |\tilde{e}(\omega, b, n)| > \frac{1}{4}\eta\right). \end{aligned} \tag{3.68}$$

Since the concentration (3.20) in Lemma 3.1 bounds both terms in (3.68), after we pick n large enough so that $\frac{\log 2}{n} < \varepsilon$, we obtain (3.2) and Lemma 3.1 follows.

3.3 Concentration of cumulants

In this section we prove (1.33)

Note that $\frac{Z_n}{n} \in [-1, 1]$. Consider the following block decomposition (see Fig. 8):

$$\Delta_i^N = \begin{cases} [-1, -1 + \frac{1}{N}], & \text{if } i = -N, \\ (\frac{i}{N}, \frac{i+1}{N}], & \text{if } i \in \{-N + 1, \dots, N - 1\}. \end{cases} \tag{3.69}$$

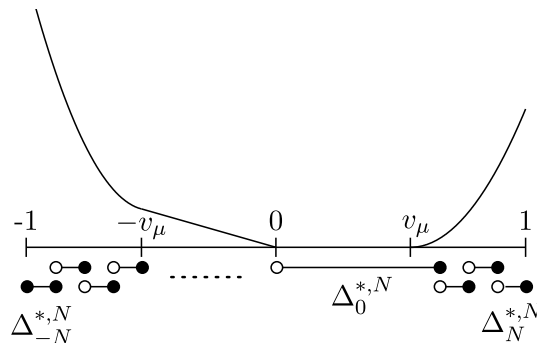


Figure 8: Block decomposition of $[-1, 1]$. Black and white circles indicate closed and open boundaries of the intervals, respectively. All the intervals are of length $\frac{1}{N}$, except possibly $\Delta_0^{*,N}$, which contains the flat piece $(0, v_\mu]$.

To deal with the flat piece of the rate function \mathcal{I} in the positive-speed case, we define the following interval $\Delta_0^{*,N}$ containing $(0, v_\mu]$ (see Fig. 8):

$$\Delta_0^{*,N} = \left(0, \frac{\lfloor v_\mu N + 1 \rfloor}{N}\right] = \bigcup_{i=-N}^{N-1} \left\{ \Delta_i^N : \mathcal{I}\left(\frac{i-1}{N}\right) = 0 \right\}, \quad \Delta_i^{*,N} = \Delta_i^N \setminus \Delta_0^{*,N}. \quad (3.70)$$

By the intermediate value theorem, we have

$$E_0^\omega \left[e^{n\lambda \frac{Z_n}{n}} \mathbb{1}_{\left\{ \frac{Z_n}{n} \in \Delta_i^{*,N} \right\}} \right] = e^{n\lambda u_i^*} P_0^\omega \left(\frac{Z_n}{n} \in \Delta_i^{*,N} \right) \quad (3.71)$$

for some $u_i^* \in \Delta_i^{*,N}$. Now,

$$\begin{aligned} \frac{1}{n} \log E_0^\omega \left[e^{\lambda Z_n} \right] - \mathcal{I}^*(\lambda) &= \frac{1}{n} \log e^{-n\mathcal{I}^*(\lambda)} \sum_{i=-N}^{N-1} E_0^\omega \left[e^{n\lambda \frac{Z_n}{n}} \mathbb{1}_{\left\{ \frac{Z_n}{n} \in \Delta_i^{*,N} \right\}} \right] \\ &= \frac{1}{n} \log \sum_{i=-N}^{N-1} e^{n\lambda u_i^* - n\mathcal{I}_n^\omega(\Delta_i^{*,N}) - n\mathcal{I}^*(\lambda)}, \end{aligned} \quad (3.72)$$

where $\mathcal{I}_n^\omega(\Delta) := -\frac{1}{n} \log P_0^\omega \left(\frac{Z_n}{n} \in \Delta \right)$. Since $\mathcal{I}_n^\omega(\Delta)$ converges to $\mathcal{I}(\Delta) = \inf_{x \in \Delta} \mathcal{I}(x)$ as $n \rightarrow \infty$, we define the block error

$$o(n, \Delta, \omega) := \mathcal{I}(\Delta) - \mathcal{I}_n^\omega(\Delta), \quad (3.73)$$

and obtain

$$\frac{1}{n} \log E_0^\omega \left[e^{\lambda Z_n} \right] - \mathcal{I}^*(\lambda) = \frac{1}{n} \log \sum_{i=-N}^{N-1} e^{n(\lambda u_i^* - \mathcal{I}(\Delta_i^{*,N}) - \mathcal{I}^*(\lambda) + o(n, \Delta_i^{*,N}, \omega))}. \quad (3.74)$$

To estimate (3.74), we will need the following lemma.

Lemma 3.2 (Reduction to the worst block).

Given $\lambda \in \mathbb{R}$ and $\varepsilon > 0$, there is an N_0 such that, for $N > N_0$ and $n > n_0(N)$,

$$\left| \frac{1}{n} \log E_0^\omega \left[e^{\lambda Z_n} \right] - \mathcal{I}^*(\lambda) \right| \leq \frac{1}{2}\varepsilon + \max_{-N \leq i \leq N-1} \left| o(n, \Delta_i^{*,N}, \omega) \right| \quad (3.75)$$

with $o(n, \Delta_i^{*,N}, \omega)$ as in (3.73).

Proof. If $\lambda = 0$, then the left-hand side of (3.75) is equal to zero. Therefore we focus on the case $\lambda \neq 0$. Since \mathcal{I} is uniformly continuous in $[-1, 1]$, we have

$$\delta_N = \sup_{|s-t| \leq 1/N} |\mathcal{I}(s) - \mathcal{I}(t)| \rightarrow 0 \quad \text{as } N \rightarrow \infty. \tag{3.76}$$

Let $\delta_i = \mathcal{I}(u_i^*) - \mathcal{I}(\Delta_i^{*,N})$, and note that $0 \leq \delta_i \leq \delta_N$.

Upper bound. Since

$$\mathcal{I}^*(\lambda) = \sup_{u \in \mathbb{R}} [\lambda u - \mathcal{I}(u)] \geq \lambda u_i^* - \mathcal{I}(u_i^*), \tag{3.77}$$

we get the bound

$$\lambda u_i^* - \mathcal{I}(\Delta_i^{*,N}) - \mathcal{I}^*(\lambda) \leq \lambda u_i^* - [\mathcal{I}(u_i^*) - \delta_i] - [\lambda u_i^* - \mathcal{I}(u_i^*)] = \delta_i \leq \delta_N. \tag{3.78}$$

Let N_0 be such that $\delta_{N_0} < \frac{1}{2}\varepsilon$. For $N > N_0$, let $n_0(N)$ be such that $\delta_{N_0} + \frac{\log 2N}{n_0} < \frac{1}{2}\varepsilon$. For $n > n_0(N)$, we have

$$\begin{aligned} \frac{1}{n} \log E_0^\omega [e^{\lambda Z_n}] - \mathcal{I}^*(\lambda) &\leq \frac{1}{n} \log \sum_{i=-N}^{N-1} e^{n(\delta_N + o(n, \Delta_i^{*,N}, \omega))} \\ &\leq \delta_N + \frac{\log 2N}{n} + \max_{-N \leq i \leq N-1} o(n, \Delta_i^{*,N}, \omega) \\ &\leq \frac{1}{2}\varepsilon + \max_{-N \leq i \leq N-1} o(n, \Delta_i^{*,N}, \omega). \end{aligned} \tag{3.79}$$

Lower bound. Let \hat{x} be such that $\mathcal{I}^*(\lambda) = \lambda \hat{x} - \mathcal{I}(\hat{x})$. Then there exists a \hat{i} such that $\hat{x} \in \Delta_{\hat{i}}^{*,N}$. For large N , we see that $\hat{x} \notin \Delta_0^{*,N}$. Indeed, if $\lambda < 0$, then $\hat{x} \leq 0$ and therefore $\hat{x} \notin \Delta_0^{*,N}$. On the other hand, if $\lambda > 0$, then $\hat{x} > v_\mu$. Pick N large enough so that $v_\mu + \frac{1}{N} < \hat{x}$. Since $\Delta_0^{*,N} \subset (0, v_\mu + \frac{1}{N}]$, we conclude that $\hat{x} \notin \Delta_0^{*,N}$.

Since $\hat{x} \in \Delta_{\hat{i}}^{*,N}$, it follows that $|\hat{x} - u_{\hat{i}}^*| < \frac{1}{N}$. Choosing N_0 so that $\frac{|\lambda|}{N_0} + \delta_{N_0} < \frac{1}{2}\varepsilon$, we obtain

$$\begin{aligned} \frac{1}{n} \log E_0^\omega [e^{\lambda Z_n}] - \mathcal{I}^*(\lambda) &\geq \frac{1}{n} \log e^{n([\lambda u_{\hat{i}}^* - \mathcal{I}(\Delta_{\hat{i}}^{*,N})] - [\lambda \hat{x} - \mathcal{I}(\hat{x})] + o(n, \Delta_{\hat{i}}^{*,N}, \omega))} \\ &\geq - \left(\frac{|\lambda|}{N} + \delta_N \right) + o(n, \Delta_{\hat{i}}^{*,N}, \omega) \\ &\geq -\frac{1}{2}\varepsilon + o(n, \Delta_{\hat{i}}^{*,N}, \omega). \end{aligned} \tag{3.80}$$

The claim in (3.75) follows from (3.79) and (3.80). □

In view of Lemma 3.2, we can bound

$$\begin{aligned} \mu \left(\omega : \left| \frac{1}{n} \log E_0^\omega [e^{\lambda Z_n}] - \mathcal{I}^*(\lambda) \right| > \varepsilon \right) &\leq \mu \left(\omega : \max_{-N \leq i \leq N-1} |o(n, \Delta_i^{*,N}, \omega)| > \frac{1}{2}\varepsilon \right) \\ &\leq \sum_{i=-N}^{N-1} \mu \left(\omega : |o(n, \Delta_i^{*,N}, \omega)| > \frac{1}{2}\varepsilon \right). \end{aligned} \tag{3.81}$$

Since there are only finitely many terms in the sum, (1.33) follows from Lemma 3.1.

3.4 Concentration of displacements

The proof of (1.34) follows from Lemma 3.1 and from the uniform continuity of \mathcal{I} as stated in (3.76). Indeed, for $\varepsilon > 0$, let N be such that $\delta_N < \frac{1}{3}\varepsilon$. For $x \geq 0$ let Δ_i^N in (3.69) be such that $x \in \Delta_i^N \subset [a, b]$ with $b - a = \frac{1}{N}$. Remember the notation $[[nx]]$ given before the statement of Theorem 1.13. For n sufficiently large so that $[[nx]] > [na]$ we have the following upper bound

$$\begin{aligned} \frac{1}{n} \log P_0^\omega (Z_n = [[nx]]) + \mathcal{I}(u) &\leq \frac{1}{n} \log P_0^\omega \left(\frac{Z_n}{n} \in [a, b] \right) + \mathcal{I}(a) + |\mathcal{I}(u) - \mathcal{I}(a)| \\ &\leq \frac{1}{n} \log P_0^\omega \left(\frac{Z_n}{n} \in [a, b] \right) + \mathcal{I}(a) + \frac{1}{3}\varepsilon. \end{aligned} \tag{3.82}$$

Using (3.1) with $\frac{2}{3}\varepsilon$ we obtain that

$$\begin{aligned} \mu \left(\omega : \frac{1}{n} \log P_0^\omega (Z_n = [[nx]]) + \mathcal{I}(x) > \varepsilon \right) \\ \leq \mu \left(\omega : \left| \frac{1}{n} \log P_0^\omega \left(\frac{Z_n}{n} > a \right) + \mathcal{I}(a) \right| > \frac{2}{3}\varepsilon \right) \leq C e^{-cn^{1-\delta}}. \end{aligned} \tag{3.83}$$

The lower bound is more delicate. By the uniform ellipticity of the environment, for $y \in [na, nb] \cap \mathbb{Z}$ we can estimate

$$P_0^\omega (Z_{n-n(b-a)} = y) \mathbf{c}^{n(b-a)} \leq P_0^\omega (Z_n = [[nx]]), \tag{3.84}$$

from which:

$$\begin{aligned} P_0^\omega (Z_{n-n(b-a)} \in [na, nb]) &= \sum_{y \in [na, nb] \cap \mathbb{Z}} P_0^\omega (Z_{n-n(b-a)} = y) \\ &\leq (n(b-a) + 1) P_0^\omega (Z_n = [[nx]]) \mathbf{c}^{-n(b-a)}. \end{aligned} \tag{3.85}$$

Set next $n' = n(1 - (b-a))$, $\tilde{a} = \frac{a}{1-(b-a)}$, $\tilde{b} = \frac{b}{1-(b-a)}$, and take $\frac{1}{n} \log$ on both sides of (3.85) to obtain

$$\begin{aligned} \frac{1}{n} \log P_0^\omega (Z_n = [[nx]]) &\geq \frac{1}{n} \log P_0^\omega \left(\frac{Z_{n'}}{n'} \in [\tilde{a}, \tilde{b}] \right) \\ &\quad - (b-a) |\log \mathbf{c}| - \frac{1}{n} \log (n(b-a) + 1). \end{aligned} \tag{3.86}$$

Since $b - a = \frac{1}{N}$, we can take N, n sufficiently large so that

$$\left| (b-a) |\log \mathbf{c}| + \frac{1}{n} \log (2n+1)(b-a) \right| < \frac{1}{3}\varepsilon, \tag{3.87}$$

and

$$|(1 - (b-a)) \mathcal{I}(\tilde{a}) - \mathcal{I}(x)| < \frac{1}{3}\varepsilon, \tag{3.88}$$

which together with (3.86) yields to

$$\begin{aligned} \frac{1}{n} \log P_0^\omega (Z_n = [[nx]]) + \mathcal{I}(x) \\ \geq (1 - (b-a)) \frac{1}{n'} \log P_0^\omega \left(\frac{Z_{n'}}{n'} \in [\tilde{a}, \tilde{b}] \right) + \mathcal{I}(x) - \frac{1}{3}\varepsilon. \end{aligned} \tag{3.89}$$

Using (3.1) with $\frac{1}{3}\varepsilon$ we obtain that

$$\begin{aligned} \mu \left(\omega : \frac{1}{n} \log P_0^\omega (Z_n = [[nx]]) + \mathcal{I}(x) < -\varepsilon \right) \\ \leq \mu \left(\omega : (1 - (b-a)) \left| \frac{1}{n'} \log P_0^\omega \left(\frac{Z_{n'}}{n'} \in [\tilde{a}, \tilde{b}] \right) + \mathcal{I}(\tilde{a}) \right| > \frac{1}{3}\varepsilon \right) \leq C e^{-cn^{1-\delta}}. \end{aligned} \tag{3.90}$$

Putting (3.90) and (3.83) together, for large enough N and $0 \leq a \leq x \leq b = a + \frac{1}{N}$ we obtain

$$\mu \left(\omega : \sup_{x \in [a,b]} \left| \frac{1}{n} \log P_0^\omega (Z_n = \lceil nx \rceil) + \mathcal{I}(x) \right| > \varepsilon \right) \leq C e^{-cn^{1-\delta}}. \tag{3.91}$$

Similarly, by (3.2), for large enough N and $a = b - \frac{1}{N} \leq x \leq b \leq 0$:

$$\mu \left(\omega : \sup_{x \in [a,b]} \left| \frac{1}{n} \log P_0^\omega (Z_n = \lceil nx \rceil) + \mathcal{I}(x) \right| > \varepsilon \right) \leq C e^{-cn^{1-\delta}}. \tag{3.92}$$

To conclude the proof of (1.34), it suffices to note that

$$\begin{aligned} & \mu \left(\omega : \sup_{x \in [-1,1]} \left| \frac{1}{n} \log P_0^\omega (Z_n = \lceil nx \rceil) + \mathcal{I}(x) \right| > \varepsilon \right) \\ & \leq \sum_{i=-N}^N \mu \left(\omega : \sup_{x \in \Delta_i^N} \left| \frac{1}{n} \log P_0^\omega (Z_n = \lceil nx \rceil) + \mathcal{I}(x) \right| > \varepsilon \right) \leq C e^{-cn^{1-\delta}}. \end{aligned} \tag{3.93}$$

4 Proofs of SLLN and LDP

4.1 Proof of SLLN

In this section we prove Theorem 1.10. We will prove the SLLN under the annealed law. After that we get Theorem 1.10 by noting that, for any event A , if $P_0^{\mu, \tau}(A) = 1$, then $P_0^{\Omega, \tau}(A) = 1$ for μ^N -a.e. Ω , and taking $A = \{ \lim_{n \rightarrow \infty} \frac{X_n}{n} = v_\mu \}$ to get the claim.

To prove the SLLN under the annealed law, we will use Theorem 1.12. To this aim, let \mathbb{P} be the joint law of doubly indexed variables $\psi_n^{(k)}$ that are pair-wise independent in k and such that, for each k , $\psi_n^{(k)}$ has law $P_0^\mu(Z_n = \cdot)$. From (1.26) we see that $\psi_{T_k}^{(k)}$ is distributed as Y_k and $\psi_{T_n}^{(\ell(n))}$ is distributed as \bar{Y}^n .

Assumptions (A1) and (A2) are trivially satisfied. It remains to check (1.29) with $L = v_\mu$, for which we use the annealed large deviation estimates for RWRE. In fact, from Proposition 1.6 we get

$$\limsup_{n \rightarrow \infty} \frac{1}{n} \log P_0^\mu \left(\left| \frac{Z_n}{n} - v_\mu \right| \geq \varepsilon \right) \leq -\mathcal{I}(v_\mu + \varepsilon) \vee -\mathcal{I}(v_\mu - \varepsilon). \tag{4.1}$$

In the zero-speed case, since $-\mathcal{I}(v_\mu + \varepsilon) \vee -\mathcal{I}(v_\mu - \varepsilon) < 0$, the speed of decay is exponential in n and (A3) holds. In the positive-speed case, $\mathcal{I}(v_\mu - \varepsilon) = 0$ and the bound in (4.1) is not useful. However, Proposition 1.7 yields the following bound in the flat piece:

$$\limsup_{n \rightarrow \infty} \frac{1}{\log n} \log P_0^\mu \left(\left| \frac{Z_n}{n} \right| < v_\mu - \varepsilon \right) < 0. \tag{4.2}$$

Since (1.31) holds and (4.2) implies (1.29) with $\delta > 0$. By (1.30), Theorem 1.10 follows.

4.2 Proof of LDP

In this section we prove Theorem 1.11. We will first prove existence of the rate function, and afterwards prove a large deviation principle with respect to this rate function. It is worth noticing that if the measure on the environment process is stationary and ergodic with respect to the family of space-time translations, then the rate function can be obtained by using Liggett's subadditive ergodic theorem [12] (see [5] for this approach). In our case, the environment process is not stationary with respect to time translations and therefore we need an ad hoc argument that will combine the specific concentration properties of RWCRE of Theorem 1.13 with the concentration estimates in Theorem 1.12. We start with two lemmas that are instrumental for our argument.

Lemma 4.1. *Let $|z| \leq 1$ and $|x| < 1$. Then, for each $n \in \mathbb{N}_0$,*

$$-\log P_0^{\Omega, \tau}(X_{n'} = \lceil \lceil n'x \rceil \rceil) \leq -\log P_0^{\Omega, \tau}(X_n = \lceil \lceil nz \rceil \rceil) - (n' - n) \log c \tag{4.3}$$

with $n' := n + 2n \frac{|x-z|}{1-|x|}$.

Proof. Since $|n'x - nz| \leq n' - n$, the Chapman-Kolmogorov equation combined with the uniform ellipticity (1.5) yields

$$P_0^{\Omega, \tau}(X_{n'} = \lceil \lceil n'x \rceil \rceil) \geq P_0^{\Omega, \tau}(X_n = \lceil \lceil nz \rceil \rceil) c^{n'-n}. \tag{4.4}$$

Take $-\frac{1}{n} \log$ on both sides. □

The next lemma, a convergence result for the cumulants of the displacements of RWCRE, will be used in the lower bound that comes below.

Lemma 4.2 (Convergence of the cumulants of RWCRE).

$$\lim_{n \rightarrow \infty} \frac{1}{n} \log E_0^{\Omega, \tau} [e^{\lambda X_n}] = \sup_{x \in \mathbb{R}} [\lambda x - \mathcal{I}(x)] = \mathcal{I}^*(\lambda), \quad \forall \lambda \in \mathbb{R}. \tag{4.5}$$

Proof. By (1.26) and the independence between ω_k and $X_{\tau(k-1)}$, we have the following equality in distribution:

$$\frac{1}{n} \log E_0^{\Omega, \tau} [e^{\lambda X_n}] \stackrel{(d)}{=} \frac{1}{n} \sum_{k=1}^{\ell(n)-1} \log E_0^{\omega_k} [e^{\lambda Z_{T_k}}] + \frac{1}{n} \log E_0^{\omega_{\ell(n)}} [e^{\lambda Z_{T^n}}]. \tag{4.6}$$

Now, let \mathbb{P} be the law induced by the doubly indexed variables $\psi_n^{(k)}(\Omega) := \log E_0^{\omega_k} [e^{\lambda Z_n}]$ under $\mu^{\mathbb{N}}$. Then

$$\psi_{T_k}^{(k)} = \log E_0^{\omega_k} [e^{\lambda Z_{T_k}}], \quad \psi_{T^n}^{(\ell(n))} = \log E_0^{\omega_{\ell(n)}} [e^{\lambda Z_{T^n}}]. \tag{4.7}$$

Assumptions (A1) and (A2) of Theorem 1.12 are readily satisfied and, by (1.33), (1.29) holds with $L = \mathcal{I}^*(\lambda)$ and $\delta > 1$. The claim follows from Theorem 1.12. □

4.2.1 Existence of the rate function

We show that $\mu^{\mathbb{N}}$ -a.e. Ω , for every $x \in [-1, 1]$,

$$\mathcal{I}(x) \leq \liminf_{n \rightarrow \infty} -\frac{1}{n} P_0^{\Omega, \tau}(X_n = \lceil \lceil nx \rceil \rceil) \leq \limsup_{n \rightarrow \infty} -\frac{1}{n} P_0^{\Omega, \tau}(X_n = \lceil \lceil nx \rceil \rceil) \leq \mathcal{I}(x). \tag{4.8}$$

Upper bound. By (1.26) and the Chapman-Kolmogorov equation, we can estimate

$$P_0^{\Omega, \tau}(X_n = \lceil \lceil nx \rceil \rceil) \geq P_0^{\omega_1}(Z_{T_1} = \lceil \lceil \tau(1)x \rceil \rceil) \times P_{\lceil \lceil \tau(1)x \rceil \rceil}^{\omega_2}(Z_{T_2} = \lceil \lceil \tau(2)x \rceil \rceil) \\ \times \cdots \times P_{\lceil \lceil \tau(\ell(n)-1)x \rceil \rceil}^{\omega_{\ell(n)}}(Z_{T^n} = \lceil \lceil nx \rceil \rceil). \tag{4.9}$$

Define the spatial-shift operator $(\theta_z \omega)(y) := \omega(z + y)$ and note that

$$-\log P_{\lceil \lceil \tau(k)x \rceil \rceil}^{\omega^{(k+1)}}(Z_n = \lceil \lceil (\tau(k) + n)x \rceil \rceil) = -\log P_0^{\theta_{\lceil \lceil \tau(k)x \rceil \rceil} \omega^{k+1}}(Z_n = \lceil \lceil nx \rceil \rceil). \tag{4.10}$$

By the spatial-shift invariance of ω under μ , we have the following equality in distribution:

$$\psi_n^{(k)} := -\frac{1}{n} \log P_0^{\theta_{\lceil \lceil \tau(k)x \rceil \rceil} \omega^{k+1}}(Z_n = \lceil \lceil nx \rceil \rceil) \stackrel{(d)}{=} -\frac{1}{n} \log P_0^{\omega_k}(Z_n = \lceil \lceil nx \rceil \rceil). \tag{4.11}$$

We next want to show that Theorem 1.12 can be applied to the above defined double-indexed sequence. Condition (A1) follows from the fact that, under $\mu^{\mathbb{N}}$, $(\psi_n^{(k)})_{n \in \mathbb{N}}$ and $(\psi_n^{(k')})_{n \in \mathbb{N}}$ are independent. Uniform ellipticity implies (A2) and Theorem 1.12 implies (1.29) with $L = \mathcal{I}(x)$ and $\delta > 1$. Therefore, by (1.30),

$$\limsup_{n \rightarrow \infty} -\frac{1}{n} \log P_0^{\Omega, \tau} (X_n = \lfloor \lfloor nx \rfloor \rfloor) \leq \mathcal{I}(x). \tag{4.12}$$

This proves the desired upper bound.

Lower bound. The first inequality in (4.8) follows by an exponential Markov inequality in combination with Lemma 4.2. First note that

$$P_0^{\Omega, \tau} (X_n = \lfloor \lfloor nx \rfloor \rfloor) \leq \min \left\{ P_0^{\Omega, \tau} (X_n \geq \lfloor \lfloor nx \rfloor \rfloor), P_0^{\Omega, \tau} (X_n \leq \lfloor \lfloor nx \rfloor \rfloor) \right\}. \tag{4.13}$$

The Chernoff bound yields

$$\theta > 0: \quad P_0^{\Omega, \tau} (X_n \geq \lfloor \lfloor nx \rfloor \rfloor) = P_0^{\Omega, \tau} (e^{\theta X_n} \geq e^{\theta \lfloor \lfloor nx \rfloor \rfloor}) \leq \frac{1}{e^{\theta \lfloor \lfloor nx \rfloor \rfloor}} E_0^{\Omega, \tau} [e^{\theta X_n}], \tag{4.14}$$

$$\theta < 0: \quad P_0^{\Omega, \tau} (X_n \leq \lfloor \lfloor nx \rfloor \rfloor) = P_0^{\Omega, \tau} (e^{\theta X_n} \geq e^{\theta \lfloor \lfloor nx \rfloor \rfloor}) \leq \frac{1}{e^{\theta \lfloor \lfloor nx \rfloor \rfloor}} E_0^{\Omega, \tau} [e^{\theta X_n}]. \tag{4.15}$$

Taking $-\frac{1}{n} \log$ on both sides of (4.14), we get

$$-\frac{1}{n} \log P_0^{\Omega, \tau} (X_n \geq \lfloor \lfloor nx \rfloor \rfloor) \geq -\frac{1}{n} \log \frac{1}{e^{\theta \lfloor \lfloor nx \rfloor \rfloor}} E_0^{\Omega, \tau} [e^{\theta X_n}] = \theta \frac{\lfloor \lfloor nx \rfloor \rfloor}{n} - \frac{1}{n} \log E_0^{\Omega, \tau} [e^{\theta X_n}], \tag{4.16}$$

and from Lemma 4.2 it follows that

$$\liminf_{n \rightarrow \infty} -\frac{1}{n} \log P_0^{\Omega, \tau} (X_n \geq \lfloor \lfloor nx \rfloor \rfloor) \geq \theta x - \mathcal{I}^*(\theta). \tag{4.17}$$

We can argue analogously for (4.15). In conclusion, the lower bound follows since

$$x > 0 \implies \sup_{\theta > 0} (\theta x - \mathcal{I}_\mu^*(\theta)) = \mathcal{I}(x), \tag{4.18}$$

$$x < 0 \implies \sup_{\theta < 0} (\theta x - \mathcal{I}_\mu^*(\theta)) = \mathcal{I}(x). \tag{4.19}$$

4.2.2 LDP given existence of the rate function

The proof is classical and we closely follow the argument in [5, p. 14-15]. We need to prove that $\mu^{\mathbb{N}}$ almost surely, for any open set $\mathcal{O} \subset \mathbb{R}$,

$$\liminf_{n \rightarrow \infty} \frac{1}{n} \log P_0^{\Omega, \tau} \left(\frac{X_n}{n} \in \mathcal{O} \right) \geq - \inf_{x \in \mathcal{O}} \mathcal{I}(x), \tag{4.20}$$

and, for any closed set $\mathcal{C} \subset \mathbb{R}$,

$$\limsup_{n \rightarrow \infty} \frac{1}{n} \log P_0^{\Omega, \tau} \left(\frac{X_n}{n} \in \mathcal{C} \right) \leq - \inf_{x \in \mathcal{C}} \mathcal{I}(x). \tag{4.21}$$

To check (4.20), since \mathcal{O} is an open set for any $x \in \mathcal{O}$, we have $\frac{\lfloor \lfloor nx \rfloor \rfloor}{n} \in \mathcal{O}$ for sufficiently large n . Therefore, by (4.8),

$$\begin{aligned} \liminf_{n \rightarrow \infty} \frac{1}{n} \log P_0^{\Omega, \tau} \left(\frac{X_n}{n} \in \mathcal{O} \right) &= - \limsup_{n \rightarrow \infty} -\frac{1}{n} \log P_0^{\Omega, \tau} \left(\frac{X_n}{n} \in \mathcal{O} \right) \\ &\geq - \limsup_{n \rightarrow \infty} -\frac{1}{n} \log P_0^{\Omega, \tau} (X_n = \lfloor \lfloor nx \rfloor \rfloor) \\ &= -\mathcal{I}(x), \end{aligned} \tag{4.22}$$

and since $x \in \mathcal{C}$ is arbitrary, (4.20) follows. To obtain (4.21), note that, because $(\frac{X_n}{n} \in \mathcal{C}) = (\frac{X_n}{n} \in \mathcal{C} \cap [-1, 1])$ and

$$\#\left\{y \in \mathbb{Z}: \frac{y}{n} \in \mathcal{C} \cap [-1, 1]\right\} \leq 2n + 1, \tag{4.23}$$

it follows that

$$P_0^{\Omega, \tau} \left(\frac{X_n}{n} \in \mathcal{C} \right) \leq (2n + 1) \sup_{x \in \mathcal{C}} P_0^{\Omega, \tau} (X_n = \lceil nx \rceil), \tag{4.24}$$

and since $\frac{\log n}{n} \rightarrow 0$, we get that

$$\limsup_{n \rightarrow \infty} \frac{1}{n} \log P_0^{\Omega, \tau} \left(\frac{X_n}{n} \in \mathcal{C} \right) = \limsup_{n \rightarrow \infty} \sup_{x \in \mathcal{C}} \frac{1}{n} \log P_0^{\Omega, \tau} (X_n = \lceil nx \rceil). \tag{4.25}$$

To conclude the claim it suffices to show that, for any $\varepsilon > 0$,

$$\limsup_{n \rightarrow \infty} \sup_{x \in \mathcal{C}} \frac{1}{n} \log P_0^{\Omega, \tau} (X_n = \lceil nx \rceil) \leq -\inf_{x \in \mathcal{C}} \mathcal{I}(x) + \varepsilon. \tag{4.26}$$

To see the latter, we argue by contradiction. Indeed, assuming that (4.26) is false, we can find a sequence of points $z_{n_k} \in \mathcal{C} \cap [-1, 1]$, converging to $z \in \mathcal{C} \cap [-1, 1]$, such that

$$\frac{1}{n_k} \log P_0^{\Omega, \tau} (X_{n_k} = \lceil n_k z_{n_k} \rceil) > -\inf_{x \in \mathcal{C}} \mathcal{I}(x) + \varepsilon. \tag{4.27}$$

By (4.8) and (4.3) we obtain that

$$\begin{aligned} -\mathcal{I}(z) &= -\lim_{k \rightarrow \infty} \frac{1}{n'_k} \log P_0^{\Omega, \tau} (X_{n'_k} = \lceil n'_k z \rceil) \\ &\geq -\lim_{k \rightarrow \infty} \frac{1}{n_k} \log P_0^{\Omega, \tau} (X_{n_k} = \lceil n_k z_{n_k} \rceil) > -\inf_{x \in \mathcal{C}} \mathcal{I}(x) + \varepsilon, \end{aligned} \tag{4.28}$$

which gives the desired contradiction and concludes the proof of Theorem 1.11.

References

- [1] S. Ahn and J. Peterson, *Quenched central limit theorem rates of convergence for one-dimensional random walks in random environments*, *Bernoulli* **25** (2019), no. 2, 1386–1411. MR-3920376
- [2] L. Avena, O. Blondel, and A. Faggionato, *Analysis of random walks in dynamic random environments via L^2 -perturbations*, *Stoch. Proc. Appl.* **128** (2018), no. 10, 3490 – 3530. MR-3849817
- [3] L. Avena and F. den Hollander, *Random walks in cooling random environments*, arXiv e-prints (2017), arXiv:1610.00641.
- [4] C. Boldrighini, R. Minlos, and A. Pellegrinotti, *Random walks in quenched i.i.d. space-time random environment are always a.s. diffusive*, *Probab. Theory Relat. Fields* **129** (2004), no. 1, 133–156. MR-2052866
- [5] D. Campos, A. Drewitz, A. Ramírez, F. Rassoul-Agha, and T. Seppäläinen, *Level 1 quenched large deviation principle for random walk in dynamic*, *Bull. Inst. Math. Acad. Sin.* **8** (2013), 1–29. MR-3097414
- [6] F. Comets, N. Gantert, and O. Zeitouni, *Quenched, annealed and functional large deviations for one-dimensional random walk in random environment*, *Probab. Theory Relat. Fields* **118** (2000), no. 1, 65–114. MR-1785454
- [7] A. Dembo, Y. Peres, and O. Zeitouni, *Tail estimates for one-dimensional random walk in random environment*, *Commun. in Math. Phys.* **181** (1996), no. 3, 667–683. MR-1414305
- [8] A. Greven and F. den Hollander, *Large deviations for a random walk in random environment*, *Ann. Probab.* **22** (1994), no. 3, 1381–1428. MR-1303649

- [9] F. den Hollander, *Large deviations*, Fields Institute monographs, American Mathematical Society, 2000. MR-1739680
- [10] H. Kesten, *The limit distribution of Sinai's random walk in random environment*, Phys. A **138** (1986), 299–309. MR-0865247
- [11] H. Kesten, M. Kozlov, F. Spitzer, *A limit law for random walk in a random environment*, Comp. Math. **30** (1975), no. 2, 145–168. MR-0380998
- [12] T. Liggett, *An improved subadditive ergodic theorem*, Ann. Probab. **13** (1985), no. 4, 1279–1285. MR-0806224
- [13] P. Révész, *The Laws of Large Numbers*, Probability and Mathematical Statistics, Academic Press, 1968. MR-0245079
- [14] Y. Sinai, *The limiting behavior of a one-dimensional random walk in a random medium*, Theory Probab. Appl. **27** (1982), no. 2, 256–268. MR-0657919
- [15] F. Solomon, *Random walks in a random environment*, Ann. Probab. **3** (1975), no. 1, 1–31. MR-0362503
- [16] O. Zeitouni, *Lectures on probability theory and statistics*, Lecture Notes in Mathematics, vol. 1837, 189–312, 2004. MR-2071629

Acknowledgments. The research in this paper was supported through NWO Gravitation Grant NETWORKS-024.002.003.

Electronic Journal of Probability

Electronic Communications in Probability

Advantages of publishing in EJP-ECP

- Very high standards
- Free for authors, free for readers
- Quick publication (no backlog)
- Secure publication (LOCKSS¹)
- Easy interface (EJMS²)

Economical model of EJP-ECP

- Non profit, sponsored by IMS³, BS⁴, ProjectEuclid⁵
- Purely electronic

Help keep the journal free and vigorous

- Donate to the IMS open access fund⁶ (click here to donate!)
- Submit your best articles to EJP-ECP
- Choose EJP-ECP over for-profit journals

¹LOCKSS: Lots of Copies Keep Stuff Safe <http://www.lockss.org/>

²EJMS: Electronic Journal Management System <http://www.vtex.lt/en/ejms.html>

³IMS: Institute of Mathematical Statistics <http://www.imstat.org/>

⁴BS: Bernoulli Society <http://www.bernoulli-society.org/>

⁵Project Euclid: <https://projecteuclid.org/>

⁶IMS Open Access Fund: <http://www.imstat.org/publications/open.htm>