



Universiteit  
Leiden  
The Netherlands

## Probing the inner regions: a multi-wavelength view of accretion and outflow in protoplanetary disks

Rota, A.A.

### Citation

Rota, A. A. (2026, February 20). *Probing the inner regions: a multi-wavelength view of accretion and outflow in protoplanetary disks*. Retrieved from <https://hdl.handle.net/1887/4292353>

Version: Publisher's Version

License: [Licence agreement concerning inclusion of doctoral thesis in the Institutional Repository of the University of Leiden](#)

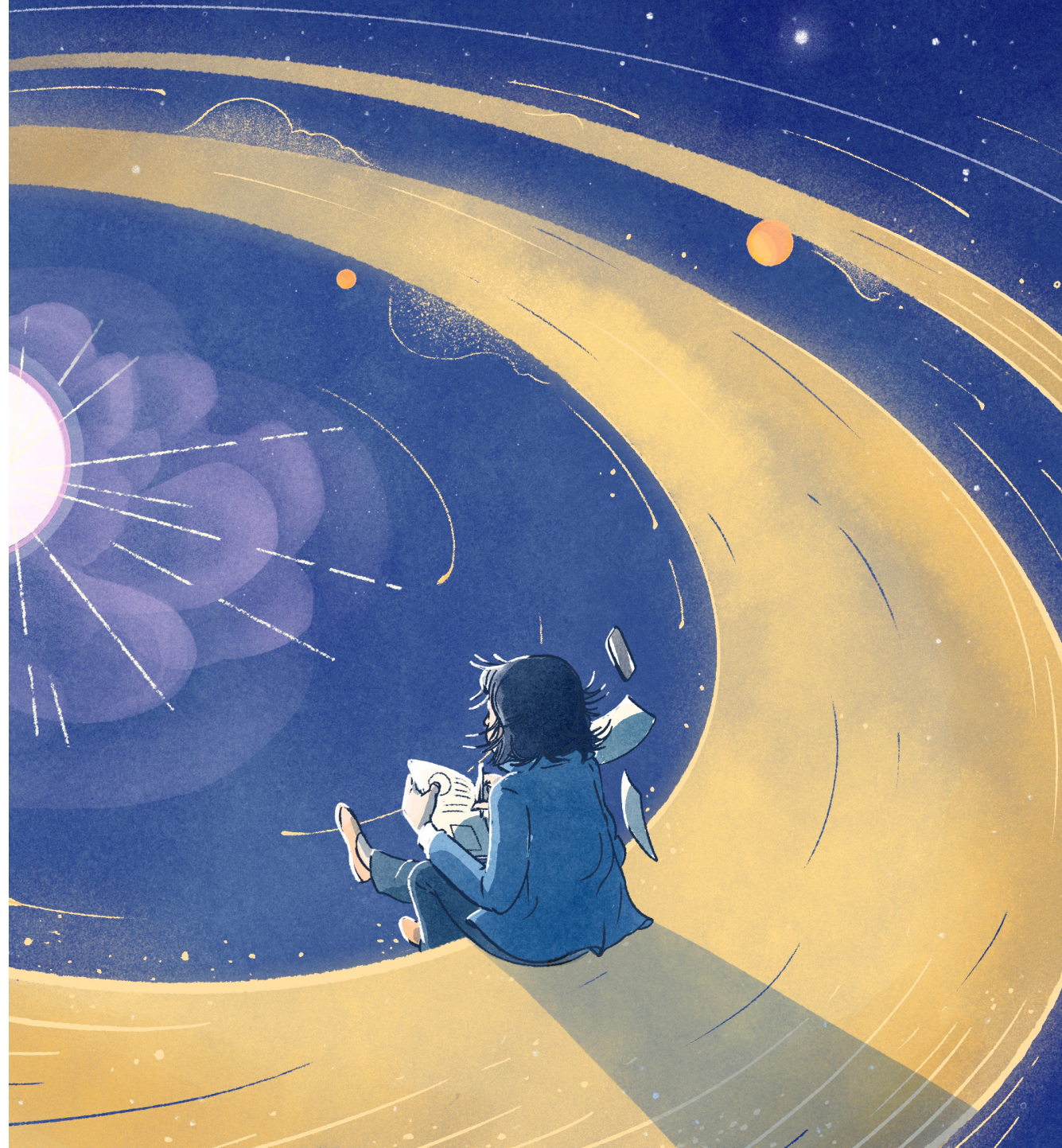
Downloaded from: <https://hdl.handle.net/1887/4292353>

**Note:** To cite this publication please use the final published version (if applicable).

# PROBING THE INNER REGIONS

A multi-wavelength view  
of accretion and outflow  
in protoplanetary disks

Alessia Rota



PROBING THE INNER REGIONS

Alessia Rota