



Universiteit
Leiden
The Netherlands

Autism and family health: stress, eating behavior, and health in young children with ASD and their parents

Lubbe, A.L. van der

Citation

Lubbe, A. L. van der. (2026, February 5). *Autism and family health: stress, eating behavior, and health in young children with ASD and their parents*. Retrieved from <https://hdl.handle.net/1887/4289480>

Version: Publisher's Version

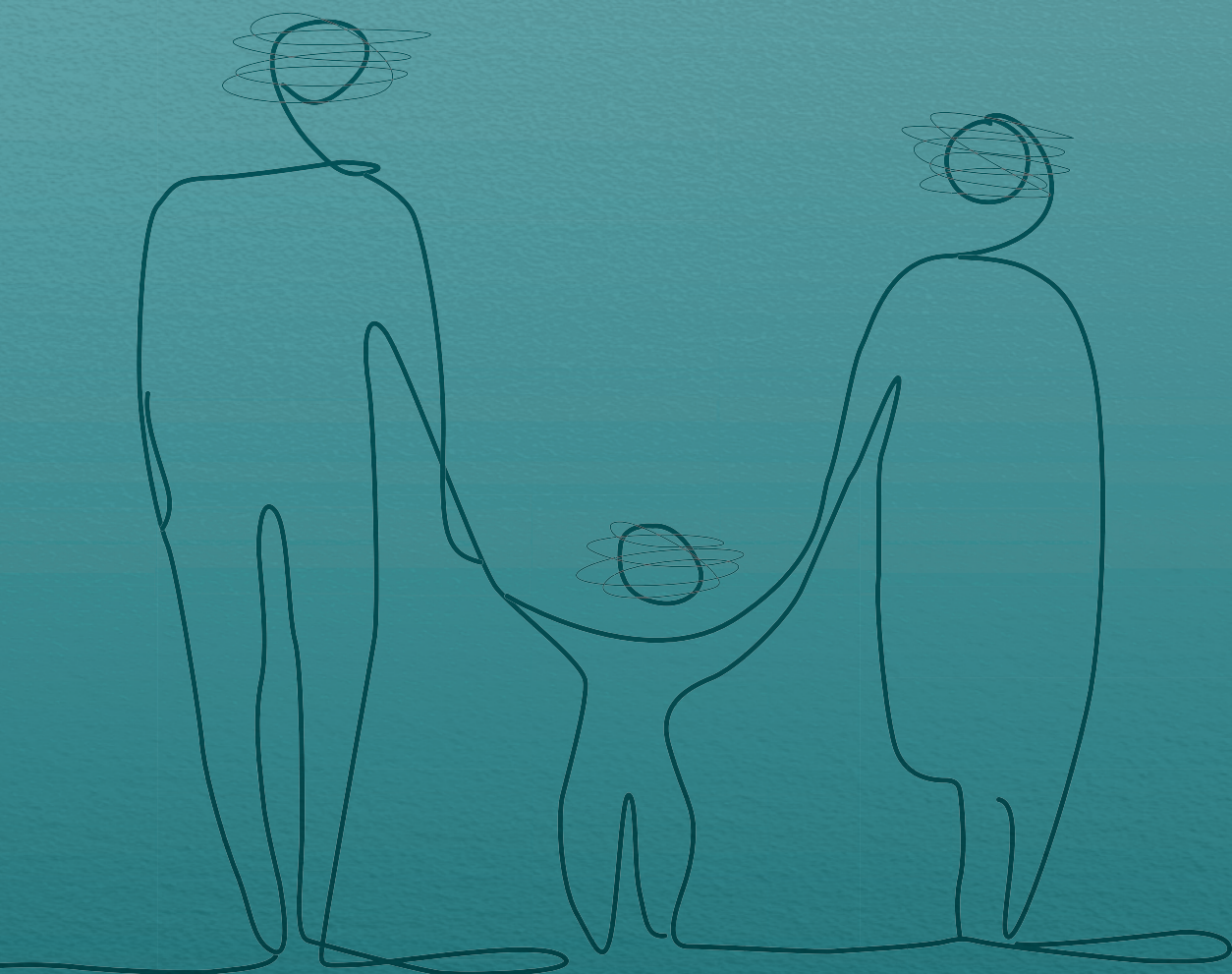
License: [Licence agreement concerning inclusion of doctoral thesis in the Institutional Repository of the University of Leiden](#)

Downloaded from: <https://hdl.handle.net/1887/4289480>

Note: To cite this publication please use the final published version (if applicable).

AUTISM AND FAMILY HEALTH:

Stress, eating behavior and health in
young children with ASD and their parents



Anna van der Lubbe