



Universiteit
Leiden

The Netherlands

From biofabrication to multi-organ platforms: engineering the human heart-kidney axis in vitro

Gabbin, B.

Citation

Gabbin, B. (2026, January 8). *From biofabrication to multi-organ platforms: engineering the human heart-kidney axis in vitro*. Retrieved from <https://hdl.handle.net/1887/4286174>

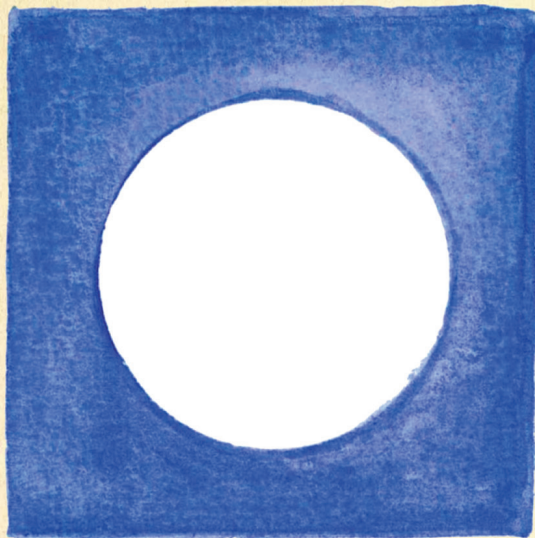
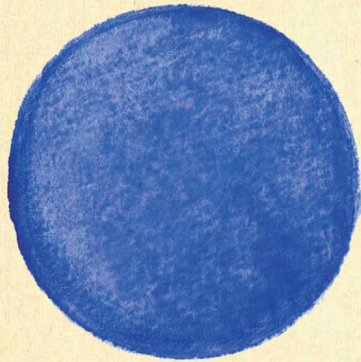
Version: Publisher's Version

License: [Licence agreement concerning inclusion of doctoral thesis in the Institutional Repository of the University of Leiden](#)

Downloaded from: <https://hdl.handle.net/1887/4286174>

Note: To cite this publication please use the final published version (if applicable).

**From Biofabrication to Multi-Organ
Platforms: Engineering the Human
Heart-Kidney Axis *In Vitro***



Beatrice Gabbin