



Universiteit  
Leiden  
The Netherlands

## Contextual support and quality of life of individuals with intellectual disability and severe and persistent challenging behaviour

Verhaar, L.

### Citation

Verhaar, L. (2025, December 10). *Contextual support and quality of life of individuals with intellectual disability and severe and persistent challenging behaviour*. Retrieved from <https://hdl.handle.net/1887/4285137>

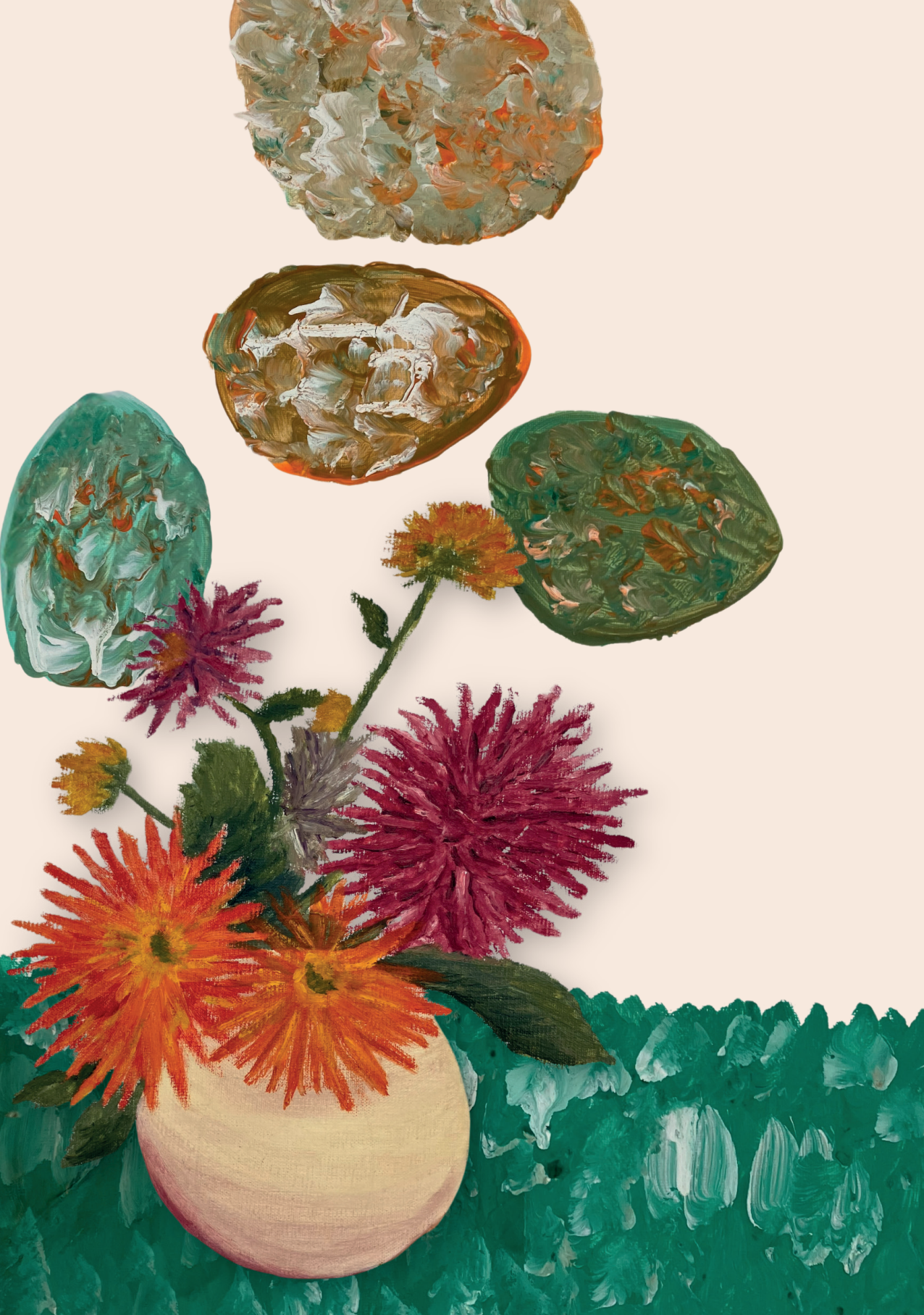
Version: Publisher's Version

License: [Licence agreement concerning inclusion of doctoral thesis in the Institutional Repository of the University of Leiden](#)

Downloaded from: <https://hdl.handle.net/1887/4285137>

**Note:** To cite this publication please use the final published version (if applicable).





Contextual Support and Quality of Life of Individuals with Intellectual  
Disability and Severe and Persistent Challenging Behaviour

Linda Verhaar

# Contextual Support and Quality of Life of Individuals with Intellectual Disability and Severe and Persistent Challenging Behaviour

Linda Verhaar

