



Universiteit
Leiden
The Netherlands

The aging B cell landscape in atherosclerosis

Mol, J. de

Citation

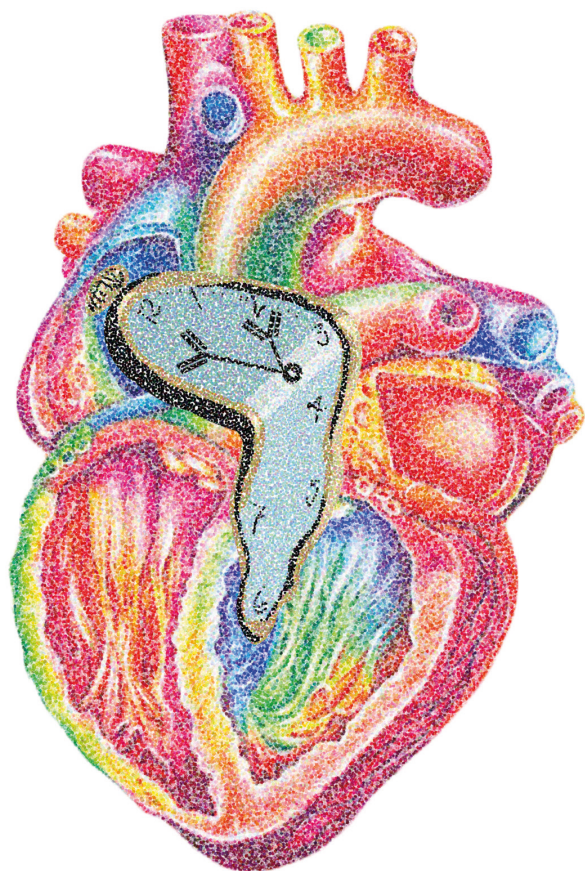
Mol, J. de. (2025, December 11). *The aging B cell landscape in atherosclerosis*. Retrieved from <https://hdl.handle.net/1887/4285092>

Version: Publisher's Version

License: [Licence agreement concerning inclusion of doctoral thesis in the Institutional Repository of the University of Leiden](#)

Downloaded from: <https://hdl.handle.net/1887/4285092>

Note: To cite this publication please use the final published version (if applicable).



Chapter 2

The dynamics of B cell aging in health and disease

Frontiers in Immunology, 2021 Oct 5;12:733566

Jill de Mol¹, Johan Kuiper¹, Dimitrios Tsiantoulas², Amanda C. Foks¹

1. Division of BioTherapeutics, Leiden Academic Centre for Drug Research, Leiden University, Einsteinweg 55, 2333 CC Leiden, The Netherlands
2. Department of Laboratory Medicine, Medical University of Vienna, Austria

ABSTRACT

Aging is considered to be an important risk factor for several inflammatory diseases. B cells play a major role in chronic inflammatory diseases by antibody secretion, antigen presentation and T cell regulation. Different B cell subsets have been implicated in infections and multiple autoimmune diseases. Since aging decreases B cell numbers, affects B cell subsets and impairs antibody responses, the aged B cell is expected to have major impacts on the development and progression of these diseases. In this review, we summarize the role of B cells in health and disease settings, such as atherosclerotic disease. Furthermore, we provide an overview of age-related changes in B cell development and function with respect to their impact in chronic inflammatory diseases.

Key words: B cells, aging, inflammaging, immunosenescence, autoimmune diseases, atherosclerosis.

INTRODUCTION

Aging has a major impact on the composition and function of the immune system, thereby drastically increasing the risk for inflammatory diseases.¹ Not surprisingly, the ongoing demographic shift towards an older population results in an increased incidence of infections, autoimmune diseases and fatal cardiovascular events², underlining the importance to enhance our understanding of the age-associated changes in the immune system, which are termed immunosenescence.

During aging, hematopoietic stem cells (HSCs) in the bone marrow show reduced self-renewal and differentiate preferentially towards the myeloid cell subsets.³ As a result, the production of neutrophils and monocytes is increased, whereas the generation of B and T lymphocytes is drastically declined. In addition to alterations in the number of immune cells, aging hallmarks, including genomic instability, telomere shortening, epigenetic dysregulation and cellular senescence, contribute to the malfunctioning of the innate and adaptive immune system.⁴ Several studies showed that the innate immune response in aged mice is prolonged due to the decreased phagocytic ability by neutrophils and macrophages.^{5,6} Moreover, aged dendritic cells (DCs) showed an increased secretion of the pro-inflammatory cytokines IL-6 and TNF α .⁷ Aging is also associated with crucial changes in the adaptive immune response. Aged T cells displayed reduced proliferative capacity and an increased production of pro-inflammatory cytokines^{8,9}, thereby contributing to a chronic state of low-grade inflammation, called ‘inflammaging’. The age-related defects in CD4⁺ T cell helper function also impaired B cell responses.¹⁰ Moreover, aging is associated with intrinsic B cell defects, such as reduced antibody production and decreased affinity maturation in antibody responses resulting in an increased risk for infections.¹¹ In light of the current pandemic, this also contributes to the high infection rate and poor prognosis of COVID-19 in the aged population.¹² Dysfunctional B cell responses in the elderly, including increased autoantibody production, are also associated with an increased risk for autoimmune diseases and other chronic inflammatory diseases, such as atherosclerosis.¹³ Taken together, B cells play a major role in these diseases via antibody secretion, antigen presentation and T cell regulation. This review aims to provide an overview of the effects of aging on the functions of B cells in health and disease settings.

B CELL DEVELOPMENT

B cells are antigen-presenting cells (APCs) that are generated from multipotent HSCs.^{14–16} In the bone marrow, HSCs differentiate into B lymphocyte progenitors, which further differentiate into progenitor B cells (pro-B cells), precursor B cells (pre-B cells) and immature B cells.¹⁷ These developmental stages can be distinguished by the expression of different markers on the cell surface (**Table 1**). During this process, each B cell clone develops a unique B cell receptor (BCR) with a specific epitope-binding site via sequential immunoglobulin gene recombination of variable, diversity and joining genes.¹⁸ The generated heavy and light chain polypeptides, which consist of constant and variable regions, form the mature BCR.¹⁹ Together with B cell-specific membrane proteins, including CD19, BCRs form signaling complexes that activate the NF- κ B, PI3K and MAPK pathways.²⁰ These pathways, in turn, stimulate cell survival and induce the migration of transitional immature B cells to the spleen for their final stages of maturation.²¹ Subsequently, mature B cells migrate to the peritoneal cavity or lymphoid follicles of secondary lymphoid organs, where they can encounter foreign antigens. Upon binding of

an antigen to the BCR, in combination with innate and costimulatory signals, B cells can function as APCs and differentiate into antibody-secreting plasma cells.^{22,23} Under infectious conditions, antigen-specific B cells present peptides via major histocompatibility complex (MHC) II to naive CD4⁺ T cells, resulting in CD4⁺ T cell activation and follicular helper T cell (T_{FH}) differentiation.²⁴ Moreover, multiple studies investigating the APC function of B cells showed that B cell derived cytokines contribute to T cell profile skewing, such as T helper (Th) 1 or Th2.^{25,26} Most B cells, however, are activated via T cell-independent (TI) or T cell-dependent (TD) mechanisms.²⁷ During T cell-independent (TI) B cell activation, antigens with repetitive epitopes, such as polysaccharides, bind to the BCR, resulting in BCR crosslinking.²⁸ Together with costimulation from toll-like receptors (TLRs), this leads to the development of short-lived plasma cells. In contrast, T cell-dependent B cell activation results in long-lived plasma cell differentiation and memory B cell formation.²⁹ This type of activation requires antigen presentation to and costimulation from Th2 or T_{FH} cells. In turn, B cell-derived plasma cells secrete immunoglobulins with heavy and light chains similar to the BCR in order to mark or neutralize the foreign antigen.³⁰ Depending on the type of activated B cell, these antibodies can be of the IgA, IgD, IgE, IgG or IgM isotype.³¹

Table 1. Phenotype of distinct B cell subsets in mice and humans

Species	Organ	B cell subset	Markers	Literature
Mouse	BM	B lymphocyte progenitor	Ly6D ⁺ IL-7Rα ⁺ CD135 ⁺ CD3 ⁻ CD4 ⁻ CD8 ⁻ Gr-1 ⁻ CD11b ⁻ TER-119 ⁻ CD117 ⁻ Sca-1 ⁻	15,17
		B1 progenitor	CD19 ⁺ CD93 ⁺ CD3 ⁻ CD4 ⁻ CD8 ⁻ Gr-1 ⁻ CD11b ⁻ TER-119 ⁻ B220 ^{low}	
		B2 progenitor	B220 ⁺ CD3 ⁻ CD4 ⁻ CD8 ⁻ Gr-1 ⁻ CD11b ⁻ TER-119 ⁻ CD19 ⁻ CD93 ⁻	
		Pre-Pro B cell	B220 ⁺ CD43 ⁺ CD93 ⁺ CXCR4 ⁺ CD135 ⁺ IL-7Rα ⁺ CD3 ⁻ CD4 ⁻ CD8 ⁻ Gr-1 ⁻ CD11b ⁻ TER-119 ⁻ CD19 ⁻ CD24 ^{low} CD117 ⁻ IgM ⁻	
		Pro B cell	B220 ⁺ CD19 ⁺ CD24 ⁺ CD43 ⁺ IL-7Rα ⁺ CD3 ⁻ CD4 ⁻ CD8 ⁻ Gr-1 ⁻ CD11b ⁻ TER-119 ⁻ CD117 ⁻ IgM ⁻	
		Pre B cell	B220 ⁺ CD19 ⁺ CD24 ⁺ IL-7Rα ⁺ CD3 ⁻ CD4 ⁻ CD8 ⁻ Gr-1 ⁻ CD11b ⁻ TER-119 ⁻ CD43 ⁻ IgM ⁻	
		Immature B cell	B220 ⁺ CD19 ⁺ CD24 ⁺ CD93 ⁺ IgM ⁺ CD23 ⁻ CD43 ⁻ IgD ⁻	
	Peritoneal Cavity	B1a B cell	CD19 ^{high} CD43 ⁺ CD1d ^{mid} CD5 ⁺ CD23 ⁻	33,41
		B1b B cell	CD19 ^{high} CD43 ⁺ CD1d ^{mid} CD23 ⁻ CD5 ⁻	
	Spleen	T1 B cell	B220 ⁺ CD19 ⁺ CD24 ⁺ CD93 ⁺ IgM ⁺ CD43 ⁻ IgD ^{low}	15,17
		T2 B cell	B220 ⁺ CD19 ⁺ CD24 ⁺ CD93 ⁺ IgM ⁺ IgD ⁺ CD43 ⁻	
		MZ B cell	B220 ⁺ CD19 ^{mid} CD21 ^{high} CD1d ⁺ IgM ^{high} CD43 ⁻ CD23 ⁻ CD93 ⁻ IgD ^{low}	15,17
		FO B cell	B220 ⁺ CD19 ^{mid} CD23 ^{high} CD1d ^{mid} IgD ^{high} CXCR5 ⁺ CD43 ⁻ CD21 ^{low} IgM ^{low}	
		ABC	CD19 ⁺ BAFR ⁺ CD11b ⁺ CD11c ⁺ (T-bet ⁺)	130,139
	Lymphoid Tissue + Periperal Blood	GC B cell	B220 ⁺ CD19 ⁺ CD40 ⁺ MHCII ⁺	64
		B _{REG}	CD19 ⁺ CD1d ^{high} CD5 ⁺	78

Human	BM	B lymphocyte progenitor	CD10 ⁺ CD34 ⁺ Pax5 ⁺	16
		Pre-Pro B cell	CD10 ⁺ CD34 ⁺ Pax5 ⁺ CD38 ⁺ CD117 ⁻	
		Pro B cell	CD10 ⁺ CD34 ⁺ Pax5 ⁺ CD38 ⁺ CD19 ⁺ CD20 ⁺ CD24 ⁺ CD93 ⁺ IL-3R ⁺ IL-7R α ⁺ CD117 ⁻	
		Pre B cell	CD10 ⁺ Pax5 ⁺ CD38 ⁺ CD19 ⁺ CD20 ⁺ CD24 ⁺ CD93 ⁺ IL-3R ⁺ IL-7R α ⁺ IL-4R α ⁺ CD117 ⁻ CD34 ⁻	
		Immature B cell	CD10 ⁺ CD38 ⁺ CD19 ⁺ CD20 ⁺ CD24 ⁺ CD93 ⁺ CD21 ⁺ CD40 ⁺ IL-4R α ⁺ CD117 ⁻ CD27 ⁻ IL-7R α ⁻	
	Peritoneal Cavity	B1 cell	CD20 ⁺ CD27 ⁺ CD43 ⁺ CD38 ^{low}	34
	Spleen	Transitional B cell	CD38 ⁺ CD19 ⁺ CD20 ⁺ CD24 ⁺ CD93 ⁺ CD21 ⁺ CD23 ⁺ CD5 ⁺ TACI ⁺ CD10 ⁻ CD27 ⁻	16
		MZ B cell	CD19 ⁺ CD20 ⁺ CD21 ⁺ TACI ⁺ CD1d ⁺ CD27 ⁺ FCRL3 ⁺	60
		FO B cell	CD19 ⁺ CD20 ⁺ CD21 ⁺ TACI ⁺ CD22 ⁺ CD23 ⁺ CXCR5 ⁺ MHCII ⁺ CD10 ⁻ CD27 ⁻ CD38 ^{low} CD24 ^{low}	
		ABC	CD19 ⁺ BAFFR ⁺ CD11b ⁺ CD11c ⁺ (T-bet ⁺)	138,140
Lymphoid Tissue + Peripheral Blood		GCB cell	CD38 ⁺ CD19 ⁺ CD20 ⁺ TACI ⁺ CD27 ⁺ MHCII ⁺ CD40 ⁺ CD83 ⁺	65
		B _{REG}	CD19 ⁺ CD24 ^{high} CD27 ⁺	79

B1 development

In the early stages of B cell development, two distinct lineages arise from different precursor cells.³² The B-1 lineage, which was originally studied in mice where it develops into the B1a and B1b subsets, is predominant in neonates and is characterized by the expression of CD43.^{33,34} Although the exact mechanisms of B1 development are not fully understood, the absence of nucleotides at the junctions of V and J segments in their BCR³⁵, which are inserted in other B cell subsets by the postnatal enzyme terminal deoxynucleotidyl transferase³⁶, suggests that B1 cells are originally derived from fetal liver progenitor cells. Some studies indicated that B1 progenitors develop prior to the existence of HSCs from pre-HSCs or fetal multipotent progenitor cells.^{37,38} However, it has also been shown that fetal HSCs are responsible for B1 development and that fetal lymphopoiesis can be restored in adult HSCs with Lin28b overexpression³⁹, suggesting that B1 cells are generated in different waves. B1 cells mainly reside in the peritoneal cavity where they can elicit antibody-producing and antigen-presenting functions.⁴⁰ B1a cells, that in contrast to B1b cells also express the T cell surface glycoprotein CD5⁴¹, are responsible for most naturally occurring IgA and IgM antibodies, which are produced in the absence of antigen stimulation.⁴² Upon infection, B1a cells can also respond to TI antigens and produce pathogen-specific antibodies.⁴³ B1b cells, however, have a broader antigen repertoire which allows them to produce bacteria-specific IgM in response to TI antigens and generate TI memory.⁴⁴ In addition to antibody production, B1 cells can activate CD4⁺ T cells through antigen presentation.⁴⁵ Contradictory results are shown regarding the predominance of B cells in CD4⁺ T cell activation, and thus the exact role of B cells in antigen presentation is not fully understood.^{24,46,47} It has been previously reported that B1a cells present antigens to both peritoneal and peripheral CD4⁺ T cells.⁴⁸ In the peritoneal cavity, B1a cells stimulate the activation of IL-10-, IL-4- and IFN γ - producing T cells, whereas splenic B1a

cells induce Th17 differentiation.⁴⁹ Splenic and serosal B1a cells can also transform into granulocyte macrophage-colony stimulating factor- (GM-CSF) producing innate response activator (IRA) B cells.⁵⁰ In addition to GM-CSF, which stimulates extramedullary hematopoiesis and DC activation during chronic inflammation⁵¹, IRA B cells secrete IgM and IL-3, which in turn promotes monocyte and neutrophil production.⁵²

B2 development

B2 cells comprise most of the adult B cell population in peripheral tissues. In contrast to the B1 subset, mature B2 development and survival is dependent on the B cell activating factor (BAFF) – BAFF receptor (BAFFR) signaling pathway.⁵³ Expression of the pro-survival receptor BAFFR starts when transitional B2 cells undergo their final maturation stages in the spleen.⁵⁴ BAFF is expressed by various cell subsets as monocytes, macrophages, DCs, stromal cells and T cells.⁵⁵ Disruption of BAFF-BAFFR signaling results in dramatically decreased B2 cell numbers.⁵⁶

B2 cells can be further subdivided in marginal zone (MZ) and follicular (FO) B cells.⁵⁷ MZ B cells are formed upon Notch-BRP-J signaling and are distinguished by very low CD23 and high CD21 expression.^{58–60} Upon recognition of a pathogen, short-lived MZ-derived plasma cells secrete high volumes of IgM. In addition, MZ B cells have the capacity to phagocytose the invading pathogen and present antigens to naive CD4⁺ T cells.⁶¹ Antigen presentation by MZ B cells induces T_H1 effector differentiation and might thus be important for the generation and reactivation of memory CD4⁺ T cells.⁶² After TD activation, FO B cells can ultimately differentiate into plasma cells, which are long-lived and produce high amounts of antibodies.⁶³ However, the majority of FO B cells interact with antigen-specific T_{HH} cells to become GC B cells⁶⁴, which express high levels of the DNA-mutating enzyme activation-induced cytidine deaminase (AID).⁶⁵ Under the influence of CD40 ligand-mediated signals and cytokines, secreted by T_{HH} cells, AID becomes activated and induces class switch recombination (CSR).⁶⁶ During CSR, the constant region of the BCR is hypermutated and as a result, the antibody production of the GC B cell is switched from IgM to IgG, IgA or IgE isotypes.⁶⁷

Regulatory B cells

There is evidence that some B cell subpopulations have the capacity to differentiate into regulatory B cells (Bregs) under pro- and anti-inflammatory environmental conditions.⁶⁸ Although the exact source of Bregs remains elusive, the similarity of cell surface markers between Bregs and various B cell subsets indicates a role for BCR signaling rather than the existence of a specific Bregs precursor.⁶⁹ The development of Bregs is antigen-specific and can be induced via innate and adaptive mechanisms.⁷⁰ In the adaptive pathway, Bregs present antigens to CD4⁺ T cells and become activated through CD40-CD40L and IL-21 signals⁷¹, whereas in the innate pathway, TLR2 and TLR9 signaling and IL-1 β play important roles.⁷² In addition, Bregs can be induced by the anti-inflammatory cytokine IL-35.⁷³ Bregs can have different phenotypes (**Table 2**) and provide tolerance via various IL-10-dependent and IL-10-independent mechanisms⁷⁴ including cell-cell contact and the secretion of IL-35 and TGF β .^{75–77} The IL-10 producing B10 subset expresses CD1d in mice and CD24 in humans.^{78,79} In both species, B10 cells suppress the APC function of DCs and inhibit Th1 and Th17 differentiation. A Breg subset that inhibits effector T cells and promotes regulatory T cell (Treg) differentiation through PD-L1 interaction was also identified in both mice and humans.⁸⁰ Murine TIM-1⁺ Breg also secrete IL-10 and mainly promote Th2 and Treg generation.⁸¹ Moreover, Kaku *et al.* showed that some murine Bregs mediate

their immunosuppression via CD73 expression and adenosine production.⁸² Interestingly, in humans, a CD73^{low} B cell subset was marked as CD4⁺ T cell-suppressing Breg.⁸³ Transitional B cells, B-1a and MZ B cells can also suppress CD4⁺ and CD8⁺ T cell activation and are therefore sometimes classified as Bregs. In addition, Lundy *et al.* discovered that some B-1a cells exert their tolerogenic effects via the expression of the apoptotic surface molecule FasL.⁸⁴ Further studies are required to elucidate if distinct Breg subpopulations are indeed derived from specialized conventional B cell subsets or whether Bregs derive from specific progenitor cells and differentiate into subsets after encounter with an antigen.

Table 2. Phenotypes and functions of regulatory B cells.

Species	Breg subset	Markers	Function	Literature
Mouse	B10 cells	CD19 ⁺ CD5 ⁺ CD1d ⁺	Induce Tregs and inhibit Th1 and Th17 differentiation	78
	TIM-1 ⁺ B cells	CD19 ⁺ TIM-1 ⁺	Promote Th2 and Treg differentiation	81
	PD-L1 ⁺ B cells	CD19 ⁺ PD-L1 ⁺	Promote Treg differentiation	80
	CD73 ⁺ B cells	B220 ⁺ CD39 ⁺ CD73 ⁺	Inhibit effector T cells	82
	B-1a FasL ⁺ cells	CD19 ⁺ CD5 ⁺ FasL ⁺	Mediate CD4 ⁺ T cell apoptosis	84
Human	B10 cells	CD19 ⁺ CD24 ^{high} CD27 ⁺	Induce Tregs and suppress Th1 and Th17 differentiation	79
	PD-L1 ⁺ B cells	CD19 ⁺ PD-L1 ⁺	Suppress pro-inflammatory cytokine production and inhibit CD8 ⁺ T cell activation	80
	Br1 cells	CD25 ^{high} CD71 ^{high} CD73 ^{low}	Inhibit CD4 ⁺ T cell proliferation	83

AGING AND B CELL SUBSETS

Recent studies revealed that the production of precursor B cells in the bone marrow is significantly decreased in aged mice and humans.^{85–88} This reduction could be attributed to age-related changes in the microenvironment of the bone marrow, including diminished levels of the pro-B cell-survival cytokine IL-7 and an enlarged bias of HSCs to produce myeloid cells instead of lymphocytes.^{89,90} Despite the comparable reduction in precursor B cells in both mice and humans, conflicting results regarding peripheral B cells have been shown. In mice, the number of mature splenic B cells is maintained due to an increase in autoreactive and age-associated B cells (ABCs).⁹¹ Although the ABC subset is also detected in humans⁹², the absolute number of B cells in the periphery declines with age in humans.⁹³ In the study of Frasca *et al.*, the number of peripheral naive B cells was unaffected, whereas the absolute number of switched memory B cells declined upon aging. Noteworthy, the characterization of memory B cells in mice and humans is not identical. According to Reynaud *et al.*, recirculating MZ B cells in humans are defined as long-lived IgM memory B cells in mice.⁹⁴ Additionally, Benitez *et al.* illustrated that the dynamics of peripheral B cell production differs between humans and mice.⁹⁵ In particular, the splenic FO B cell compartment was larger in humans compared to mice, which might explain the difference in observed effects of aging on B cell numbers. Nevertheless, the quality of aged peripheral B cells is reduced in both mice and humans. Frasca *et al.* discovered that aging downregulates CSR in human and murine peripheral B cells^{93,96}, which might explain why aged murine plasma cells mainly secrete IgM, whereas young murine plasma cells mainly secrete IgG.⁹⁷ Antibodies generated in aged mice also showed decreased affinity and thus provided less protection.⁹⁸ Although these studies mainly investigated IgG responses, aging affects all B cell subsets (**Table 3**).

Aging and B1 cells

As mentioned above, most B1 cells are derived from fetal or neonatal precursors and are maintained via

self-replenishment during the adult life.⁹⁹ According to Alter-Wolf *et al.*, the number of B1 progenitors in mice is unaffected upon aging and Hinkley *et al.* even observed an increase in murine B1 cells due to clonal expansion.^{100,101} In contrast, studies in young and aged humans showed that the percentage of B1 cells is decreased in the elderly^{102,103}, which could possibly be explained by the low capacity of the adult self-replenishment during the adult life.⁹⁹ According to Alter-Wolf *et al.*, the number of B1 progenitors in mice is unaffected upon aging and Hinkley *et al.* even observed an increase in murine B1 cells due to

Table 3. Effects of aging on B cell subsets.

B cell subset	Model	Effect of aging	Literature
Total B cells	Young (2-3 months) and old (>8 months) C57BL/6 and BALB/c mice	Reduced numbers of B cell precursors	85, 87
	Human bone marrow specimens from 598 patients (2 months – 98 years)	Decreased numbers of B cell precursors and changed antibody expression	88
	Human peripheral blood from 46 donors (18-86 years) and young (2-4 months) and old (24-27 months) BALB/c mice	Impaired CSR	92, 93
	Human peripheral blood from 130 donors (21-99 years)	Declined percentage of memory B cells, no effect on total number of peripheral B cells	93
	Young (2 months) and old (24 months) C57BL/6 mice	Increased IgM production, decreased IgG production	97, 98
B1 cells	Young (2-4 months) and old (21-26 months) BALB/c mice	No effect on B1 precursors	100
	C57BL/6 and C57BL/6 SCID mice (1-18 months)	Increased number of peritoneal B1b cells	101
	Human peripheral blood from 85 donors (20-103 years)	Decreased percentage of CD5 ⁺ B cells	103
	Studies of vaccination against pneumococcal infections in elderly (65+)	Reduced protection of antibodies secreted by B-1 cells against bacteria	107
	PBMCs from young (~41 years old) and old (~79 years old) individuals and young (5-8 weeks) and old (18 – 22 months) C57BL/6 mice	Accumulation of 4-1BBL ⁺ MHC-I ⁺ CD86 ^{hi} B cells	109, 110
B2 cells	Young (2-3 months) and old (16-22 months) BALB/c and C57BL/6 mice	Reduced B2 antibody production to T-dependent antigens	111
	Young (2-3 months) and old (20-25 months) C57BL/6 mice	Dysfunctional antibody production	116, 117
	Young (2-4 months) and old (21-26 months) BALB/c mice	Reduced number of B2 progenitors	118
	Young (3 months) and old (18 months) C57BL/6 mice	Reduced number of FO B cells, increased sensitivity of MZ B cells to BAFF	119
	Young (2-4 months) and old (>20 months) B10.BR mice	Impaired GC expansion and differentiation and reduced CD4 ⁺ T cell helper function	120
	Young (2-3 months) and old (20-21 months) BALB/c mice	Impaired FO DC function, reduced GC formation and B-2 antibody production	121
	Human peripheral blood from 85 donors (20-103 years)	Decreased numbers of naive and memory B-2 cells, increased percentage of unswitched IgM memory cells	103
	Human peripheral blood from 54 donors (20-45 and 70-86 years)	Reduced percentage of classical switched memory B cells	122
	Young (3 months) and old (10 months) SAMP8 mice and young (2 months) and old (17-18 months) BALB/c mice	Reduced number of MZ B cells and inhibited T-independent antibody responses	126, 127
	C57BL/6 mice (2-30 months)	Impaired antigen capture and immunoglobulin production of MZ B cells	128

ABCs	Young (2-3 months) and old (> 22 months) B10.D2 mice	Increased amount of peripheral antigen-experienced B cells	91
	Young (2-5 months) and old (24-29 months) C57BL/6 mice	ABC expansion and decreased number of IL-10 secreting FO B cells	129
	C57BL/6 and C57BL/6 × BALB/c mice (3-22 months)	Increased number of ABCs, probably due to exhausted FO expansion	131
	Young (3-4 months) and old (>20 months) C57BL/6 mice	Depletion of ABCs in aged mice revived B cell production	137
	Young (1-3 months) and old (> 24 months) C57BL/6 mice	Accumulation of ABCs in female mice	138
	Human peripheral blood from 88 donors (20-55 and 75-102 years)	Elevated percentage of double negative exhausted memory cells	144
	Young (2 months) and old (15 months) C57BL/6 mice	Increased proportion of Th17 cells*	148
AABs	Young (3-4 months) and old (18-24 months) C57BL/6 mice	Accumulation of AABs in the VAT of obese mice	151
	Young (3 months) and old (19-24 months) C57BL/6 mice	AAB accumulation in the VAT of obese female mice	152

*Possible indirect effects of ABCs

clonal expansion.^{100,101} In contrast, studies in young and aged humans showed that the percentage of B1 cells is decreased in the elderly^{102,103}, which could possibly be explained by the low capacity of the adult human bone marrow to generate B1 cells compared to adult murine bone marrow. While the antibody-secreting capacity remained unaffected in humans, the number of spontaneously IgM-secreting B1 cells was reduced most likely via downregulation of the transcription factors XBP-1 and Blimp-1, both involved in the proliferation and differentiation of plasma cells^{104,105}, and upregulation of the plasma cell-inhibiting transcription factor PAX-5.¹⁰⁶ In addition to the decrease in IgM-secreting B1 cells, the diversity of IgM antibodies was reduced.¹⁰⁰ In line with these findings, Adler *et al.* illustrated that aging limited bacterial protection by IgM secreted by B1 cells.¹⁰⁷ This could be the effect of N-region nucleotide additions, which are found on immunoglobulins produced by aged B1 cells.¹⁰⁸ Together these results suggest that B1 cell functions in humans are impaired upon aging. Although the number of B1 cells was not decreased in aged mice, recent research showed that aging affected B1a cells.¹⁰⁹ Under the influence of aged myeloid cells, B1a cells in aged mice and humans were converted into pro-inflammatory 4-1BBL expressing cells. These 4-1BBL⁺ B cells were shown to activate anti-tumor granzyme B-secreting CD8⁺ T cells via the MHC/TCR and 4-1BBL/4-1BB axes.¹¹⁰ This finding implies that aging also affects murine B1 cell functionality. However, Lee-Chang *et al.* only studied the effects of aging on neonatal B1a cells. Since generation of the B1b subset seems to be more predominant in aged mice¹⁰¹, B1b cells should be further investigated in an aged setting.

Aging and B2 cells

Since Hu *et al.* reported in 1993 that aging reduced the B2 cell antibody response to T cell-dependent antigens in mice, the effects of aging on the B2 subset are under broad investigation.¹¹¹ Initially, the loss of IgG and high affinity antibodies was thought to be induced by dysfunctional aged DCs and T cells.^{10,112} DCs and T cells of aged mice were shown to be defective in the expression of B cell-activation markers, such as CD40L, resulting in diminished numbers of GC B cells and impaired isotype switching. Moreover, the number of Tregs, which can directly suppress B cell functions, is increased in aged mice.^{113,114} Although contradicting results regarding the age-related effects on the

immunosuppressive activity of Tregs has been shown, Sage *et al.* reported that the frequency and function of follicular Tregs was increased in aged mice¹¹⁵, resulting in a defective antibody response. However, an adoptive transfer with young T cells and aged B cells to immunodeficient mice also resulted in low levels of high affinity antibodies, implying intrinsic B cell defects.¹¹⁶ Consistent with this finding, Frasca *et al.* concluded that isotype switching was impaired in aged B2 cells in both mice and humans due to a reduction in E47 mRNA stability and AID transcription.¹¹⁷ In addition to the reduced antibody affinity, the number of progenitor cells is decreased in aged murine bone marrow.¹¹⁸ Despite the maintenance of peripheral B2 cell numbers in mice, the amount and percentage of the FO B cell subset is slightly declined upon aging.¹¹⁹ Together with the disrupted follicle organization of aged T cells¹²⁰, this might explain the reduction in GC numbers.¹²¹ The reduction in the FO B cell subset might also be responsible for the decline in naive and memory B2 cell numbers in aged humans.^{103,122} Apart from the FO lineage, aging also affects the MZ B cell subset. Although the exact effects of aging on MZ B cells remain unclear, recent studies reported an age-associated increase in autoreactive antibodies.¹²³ Since previous research illustrated that autoreactive MZ B cells might elude negative selection in the presence of high levels of the pro-survival factor BAFF¹²⁴, which is increased upon aging¹²⁵, Miller *et al.* speculated that the increase in autoreactive antibodies is caused by BAFF hypersensitivity of aged MZ B cells.¹¹⁹ However, Miller *et al.* did not investigate MZ B cell numbers in aged mice. In contrast to the hypothesis by Miller *et al.*, both Cortegano and Birjandi *et al.* observed a reduction of MZ B cells in aged mice.^{126,127} The age-related disruption of the marginal zone due to a decline in MZ macrophages may partially account for the reduction in MZ B cells. Besides decreased MZ B cell numbers, Turner *et al.* showed that antigen capture and antibody production of aged MZ B cells was defective, resulting in a diminished T cell-independent immune response.¹²⁸ Altogether, these studies suggest that aging impairs B2 cell functions in both humans and mice.

Age-associated B cells

The maintenance of B2 cell numbers in aged mice could possibly be explained by the accumulation of age-associated B cells. In 24 to 30 months-old C57BL/6 mice, half of all splenic B cells are considered to be ABCs, whereas the frequency of this population is extremely low in young mice.¹²⁹ These ABCs are observed in both mice and humans and could be distinguished from other B cell subsets by their expression markers, including CD11b, CD11c and T-bet, and innate activation stimuli, such as toll-like receptor (TLR) 7 signals.¹³⁰ Although the exact cell surface markers are still under debate, ABCs do not express CD43 and CD5 that are found on B1 cells. The ABC subset is also different from MZ and FO B cells, since ABCs do not depend on BAFF signals.¹³¹ However Hao *et al.* did show that FO B cells can transform into ABCs in both young and aged mice, suggesting that ABCs are derived from B2 cells.¹³¹ This might also explain the reduction in the FO B cell pool upon aging.¹¹⁹ When Knöde *et al.* repeated this experiment in aged mice, they concluded that ABCs arise from GC B cells following T cell-dependent antigen activation¹³², thereby indicating ABCs as memory subset. In contrast, recent studies have shown that ABCs mainly arise in an antigen-limited environment and proposed that homeostatic expansion stimulates ABC formation to balance B cell progenitor loss.^{133–135} However, ABCs were reported to inhibit B cell generation via the production of TNF, and their depletion resulted in reactivated B lymphopoiesis^{136,137}, suggesting that the loss of B cell precursors is caused rather than balanced by ABCs. Nonetheless, different subsets of ABCs have been described, indicating that ABCs can be generated via different developmental routes dependent on environmental factors, such as age

and antigen load. One of these subsets, comprising almost two-thirds of all ABCs, is characterized by the expression of the Th1 transcription factor T-bet.^{138,139} In addition, a T-bet negative subset, which is characterized by the expression of CXCR5, has been reported.¹⁴⁰ The expansion of the T-bet⁺ subset is dependent on innate stimuli, such as TLR7 and TLR9 ligands, in an IL-21 and IFN γ rich environment. Previous research demonstrated that the transient expression of T-bet by B cells stimulated IgG2a antibody isotype switching and a correlation between ABCs and protective IgG2a was also observed in virally infected mice.^{141,142} In humans, an increase in ABCs was associated with elevated levels of IgG1.¹⁴³ Notably, Colonna-Romano *et al.* discovered the expansion of an ABC-like CD27⁻ IgD⁻ IgG⁺ memory B cell subset in the periphery of aged individuals, clarifying the high numbers of IgG observed in the elderly.¹⁴⁴ Although T-bet expression was not shown for the latter double negative memory subset, Wang *et al.* proposed that loss of T-bet is probably necessary for the conversion of ABCs into plasma cells¹⁴⁵, suggesting that the double negative memory B cell might be an intermediate state from ABC to plasma cell. However, if and how plasma cells can be derived from ABCs remains poorly understood. Nonetheless, ABCs are speculated to secrete autoreactive antibodies, explaining their abundance in autoimmune diseases.¹⁴⁶ Aside from immunoglobulin production, the antigen presenting function of ABCs is intensively investigated. Whereas Colonna-Romano *et al.* reported that the double negative exhausted memory B cell is incapable of antigen presentation, recent findings conclude that ABCs are efficient APCs that skew Th17 differentiation, thereby possibly explaining the increase in Th17 differentiation observed in aged mice and humans.^{147–149} Upon activation, Th17 cells secrete the pro-inflammatory cytokine IL-17, which plays important roles in both protective immunity and autoimmunity by the induction of neutrophil migration and activation¹⁵⁰, thereby contributing to inflammaging. Moreover, ABCs promote inflammaging by the production of IFN γ and TNF α .¹³⁶ Strikingly, ABCs were also observed to secrete high levels of the anti-inflammatory cytokine IL-10, suggesting an immunoregulatory function. Ratliff *et al.*, however, stated that this IL-10 was produced by an ABC-inhibiting regulatory FO B cell subset.¹²⁹ Although many studies confirm the presence of an ABC subset in both mice and humans, the expression markers defined in these studies differ considerably. Some studies include CD11c and T-bet, whereas others focus on CD21 and CD27 or the production of IgM and IgG. These differences indicate heterogeneity in the ABC subset, suggesting that further research should examine age-related effects on distinct ABC subsets.

Adipose-resident aged B cells

In the white visceral adipose tissue (VAT) of aged female obese mice, Frasca *et al.* discovered the accumulation of an exhausted memory B cell subset similar to ABCs.¹⁵¹ In addition, Frasca *et al.* highlighted that FO B cells in a fatty environment rapidly transform into this pro-adipogenic B cell subset, resulting in a disrupted lipid metabolism. Comparable to splenic ABCs, this subset, defined as adipose-resident age-related B cells (AABs), expressed pro-inflammatory markers and was found to be more abundant in aged female than in aged male mice.¹⁵² Since the sex-related differences in ABC content are thought to be caused by TLR7, which is located on the X-chromosome and has been shown to escape X-chromosome silencing¹⁵³, the activation mechanisms of AABs are thought to be similar to ABCs. Although the direct effects of TLR7 signaling on AAB accumulation are not investigated, Camell *et al.* concluded that AAB expansion is dependent on the NLRP3 inflammasome¹⁵², which can be activated by TLR7 signaling.¹⁵⁴ Interestingly, upon NLRP3 deficiency, Camell *et al.* observed a reduction in both VAT AABs as splenic ABCs, confirming comparable activation routes for these

subsets. In contrast, AABs do not express T-bet and induce Th1 differentiation rather than Th17 polarization^{155,156}, indicating that AABs are functionally different from ABCs. Altogether, these data illustrate that aging induces the expansion of ABCs in the spleen and the accumulation of AABs in white VAT, resulting in impaired antibody responses and disrupted lipolysis.

Aging and Bregs

As observed by Ratliff *et al.*, aging reduced the number of an IL-10-secreting regulatory FO B cell subset¹²⁹ and similar to these findings a reduction in IL-10 levels upon aging was reported recently.¹⁵⁷ However, IL-10 is not exclusively produced by Bregs and the effects of aging on Bregs are thus far not examined. The general decrease in B cell precursors and B-1 and B-2 subsets implies a subsequent reduction in Bregs. Nevertheless, the immunosuppressive functions of Tregs were observed to be increased¹⁵⁸, whereas naive T cell numbers decreased upon aging.¹⁵⁹ Since the differentiation of naive T cells into Tregs can be stimulated by Bregs¹⁶⁰, the immunosuppressive function of Bregs is possibly also augmented upon aging. Contributing to this hypothesis, Dang *et al.* showed that PD-L1 expression on B lymphocytes increased with aging in healthy donors.¹⁶¹ However, these PD-L1-expressing B cells were identified by CD19 only and not specifically defined as Bregs. In contrast, increased autoimmunity in the elderly might suggest an age-related loss of tolerogenic Bregs.¹⁶² Since Bregs play an important role in regulating inflammaging and balancing the pro-inflammatory responses of ABCs, it is necessary to investigate the consequences of aging on the number and functions of the Breg subset.

AGED B CELL HOMEOSTASIS IN DISEASE

The aged B cell in infections

The age-associated changes in the immune system heavily increase the risk for bacterial and viral infections in the elderly (**Figure 1**).¹⁶³ In combination with the reduced responses to vaccinations in the elderly, this increase results in high hospitalization and mortality rates due to infectious diseases, such as COVID-19, pneumonia and influenza.^{164,165} Although aging of the T cell repertoire and the associated Th1/Th2 imbalance, with a reduced T_{FH} and Th2 output in the elderly^{115,166}, contributes to the high frequency of influenza infection¹⁶⁷, intrinsic defects in aged B cells substantially impair the influenza-specific response. Firstly, the decreased ability in CSR and somatic hypermutation of aged B cells results in lower antibody titers against pathogens.^{168,169} The generated antibodies in the elderly are also less protective due to their lower affinity and neutralization capacity.¹⁷⁰ Furthermore, a recent study investigating the effectiveness of influenza vaccination at different ages observed an age-dependent increase or decrease in DNA methylation at specific CpG sites.¹⁷¹ These age-related epigenetic alterations could often be linked to the low responsiveness of the subject to influenza vaccination, indicating that epigenetic remodeling upon aging negatively impacts the humoral response.¹⁷² In addition, the percentage of ABCs in aged individuals negatively correlates with the responsiveness to the influenza vaccine.¹⁷³ Frasca *et al.* reported that ABCs secrete pro-inflammatory cytokines, but do not produce antibodies against influenza antigens in aged individuals.¹⁷⁴ However, several studies showed that influenza-specific ABCs differentiate into protective antibody-producing cells in both mice and humans.^{133,175} Although the exact role of ABCs in infectious diseases is still under debate, elevated percentages of CD21⁺ CD11c⁺ ABCs were also detected in severe COVID-19 cases compared to mild cases¹⁷⁶ and high levels of pro-inflammatory cytokines were negatively associated with the risk for

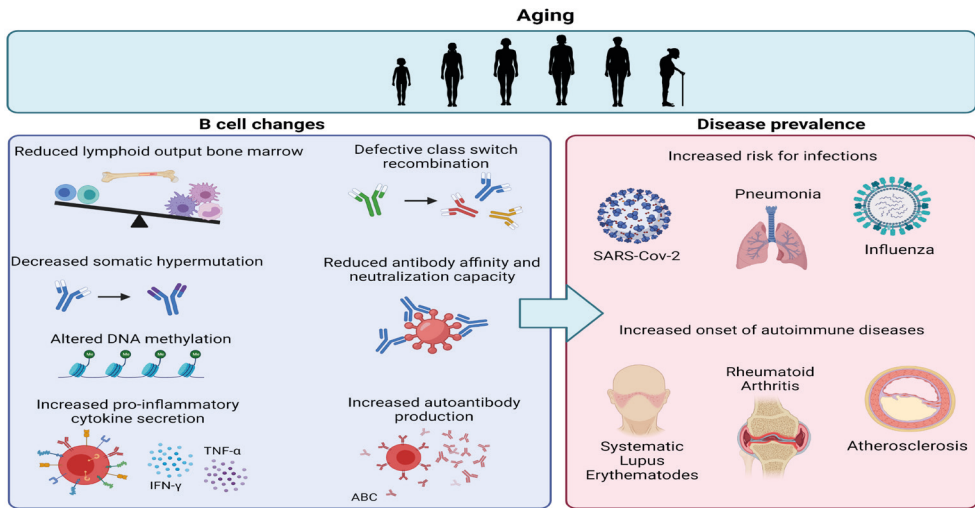


Figure 1. Age-related effects on B cells and the impact on disease prevalence. Aging is associated with reduced lymphoid output in the bone marrow and intrinsic defects in B cells, including decreased CSR, SHM and antibody affinity. The increase in ABCs also results in increased pro-inflammatory cytokine secretion and autoantibody reduction. Together, these age-related B cell changes contribute to the increased risk for infections and autoimmune diseases upon aging.

pneumonia.¹⁷⁷

B cell aging in autoimmune diseases

As described above in the section regarding ABCs, aging of the B cell repertoire contributes to autoimmunity (**Figure 1**). Autoreactive B cells are concluded to be responsible for the production of autoantibodies, the presentation of autoantigens and the secretion of pro-inflammatory cytokines.¹⁷⁸ Upon aging, the level of self-reactive antibodies is elevated, resulting in the onset and development of autoimmune diseases.¹⁷⁹ Since ABCs were observed to secrete autoantibodies, recent studies examined the association of this B cell subset with autoimmunity. In several autoimmune diseases, such as common variable immunodeficiency (CVID)¹⁸⁰, rheumatoid arthritis (RA)¹⁸¹ and systemic lupus erythematosus (SLE)¹⁴⁵, the number of ABCs was significantly higher in both patients and autoimmune prone mice compared to healthy controls. Remarkably, Rubtsov *et al.* observed that the frequency of the ABC subset was significantly higher in aged female RA patients compared to young female patients and male patients of any age¹³⁸, suggesting that the previously described sex differences in ABCs contribute to the higher prevalence of autoimmune diseases in women relative to men.¹⁸² Due to the young age of investigated male and female SLE patients, peripheral ABCs in SLE were not detected by Rubtsov *et al.* Nevertheless, recent studies discovered the presence of ABCs, induced by TLR7 signaling, in lupus mice and patients.^{140,183} Duffy *et al.* already reviewed that upregulated TLR7 signaling facilitated autoimmune responses¹⁸⁴, however, the exact mechanisms leading to TLR activation in autoimmune diseases remain unclear. Santiago-Raber *et al.* speculated that autoantibodies promote the uptake of self-RNA by DCs, resulting in the stimulation of TLR7.¹⁸⁵ Moreover, antibodies against self-DNA can give rise to the formation of immune complexes, which can subsequently activate TLR9, leading to pro-inflammatory immune responses.¹⁸⁶ However, Nickerson *et al.* demonstrated that TLR9 can inhibit TLR7 and ABC development¹⁸⁷, indicating a regulatory role for the receptor. Nonetheless, the tolerance

mechanism induced by TLR9 fails in ABCs due to the pro-inflammatory signals CD40L, IFN γ and IL-21, resulting in autoinflammatory B cells.¹⁸⁸

B cell aging in atherosclerosis

As B cells play an important role in the lipid-driven, chronic inflammatory disease atherosclerosis¹⁸⁹, B cell aging is expected to also impact atherosclerosis development. Atherosclerosis, the main underlying cause of fatal cardiovascular events, leads to the formation of plaque in medium- to large-sized arteries.¹⁹⁰ Rupture or erosion of an atherosclerotic plaque causes myocardial infarction or stroke. A hallmark step for the initiation of atherosclerosis is the retention and subsequent oxidation of circulating low-density lipoproteins (LDLs) in the subendothelial space of the arterial vessel wall. Oxidation of LDL (oxLDL) results in the formation of oxidation-specific epitopes (OSEs)^{191,192}, which are recognized by the immune system and thus trigger a series of inflammatory responses starting with the recruitment of monocytes.¹⁹³ In the intima, these monocytes differentiate into macrophages that phagocytose oxLDL. As a result of oxLDL uptake, macrophages convert into foam cells, which further attract immune cells to the lesion. Although these immune cells mainly include monocytes and T cells, B cells are also recruited to the vessel wall of the atherosclerotic plaque.¹⁹⁴ B cells affect plaque formation by regulating T cell responses and producing antibodies, such as antibodies against OSEs.¹⁸⁹ Palinski *et al.* reported that these anti-OSE antibodies are able to block the uptake of oxidized LDL, thereby suggesting an atheroprotective role for B cells.¹⁹⁵ In addition, Caligiuri *et al.* observed a decrease in atherosclerotic lesion size upon transfer of splenic B cells to apolipoprotein E (*ApoE*) deficient mice.¹⁹⁶ Although these results indicate that B cells are anti-atherogenic, several studies showed reduced atherosclerosis after B cell depletion.^{197,198} These contradictory results can be attributed to differential effects exerted by different B cell subsets during atherosclerosis progression.^{199,200}

B-1 cells confer an atheroprotective function by their anti-oxLDL IgM production.²⁰¹ In line with these findings, Gruber *et al.* reported decreased atherosclerotic lesion size as a result of B cell-specific depletion of sialic acid-binding immunoglobulin-like lectin G (SIGLEC-G), which resulted in increased numbers of B-1 cells and elevated OSE-specific IgM plasma levels.²⁰² Although B-1a and B-1b cells show similar anti-atherogenic effects^{203,204}, B-1a cells can give rise to pro-atherogenic IRA B cells.⁵⁰ IRA B cells secrete GM-CSF, which promotes Th1 skewing, thereby aggravating atherosclerotic lesion formation.²⁰⁵ Moreover, IRA B cells induce the expansion of infiltrating monocytes and neutrophils and thus promote inflammation.^{51,206} In contrast to B-1 cells, Kyaw *et al.* observed increased atherosclerotic lesions after an adoptive transfer of 5×10^6 B-2 B cells to B lymphocyte deficient *ApoE*^{-/-} mice.²⁰⁷ Moreover, B-2 depletion as a result of BAFFR deficiency in *ApoE*^{-/-} mice reduced atherosclerosis progression.^{208,209} Similar to these findings, inhibition of BAFFR with monoclonal antibodies, which similar to BAFFR deficiency leads to increased soluble BAFF levels, decreased atherosclerotic plaque formation.²¹⁰ Interestingly, it has been shown that an antibody-mediated neutralization of BAFF in atherogenic diet-fed *ApoE*^{-/-} and *Ldlr*^{-/-} mice promoted atherosclerosis progression.²¹¹ Similar to BAFFR inhibition, pro-atherogenic B-2 cell numbers were also decreased upon BAFF neutralization, thereby suggesting an anti-inflammatory role of BAFF independent of BAFFR signaling and B cells in atherosclerosis. As mentioned previously, B-2 cells are divided in FO B cells and MZ B cells. Tay *et al.*, reported that mature B cell-specific Blimp-1 deficiency impaired plasma cell differentiation from FO B cells, resulting in decreased IgG levels and reduced atherosclerosis development in *Ldlr*^{-/-}

^{-/-} mice.²¹² In line with these findings, Douna *et al.* discovered that specific FO B cell inhibition by BTLA stimulation resulted in significantly reduced atherosclerosis.²¹³ In contrast to FO B cells, MZ B cells exhibit atheroprotective properties by suppressing the proatherogenic T_{FH} response, thereby inhibiting atherosclerosis development.²¹⁴ Nevertheless, the exact functions of the distinct B-2 subsets in atherosclerosis need to be further investigated. Apart from B-1 and B-2 cells, Bregs have been identified in atherosclerosis.²¹⁵ Bregs exhibit anti-atherogenic functions via various mechanisms, including secretion of IL-10 and IL-35, inhibition of GC B cells, apoptosis induction of effector T cells, and stimulation of the atheroprotective molecule adenosine.^{82,216–218}

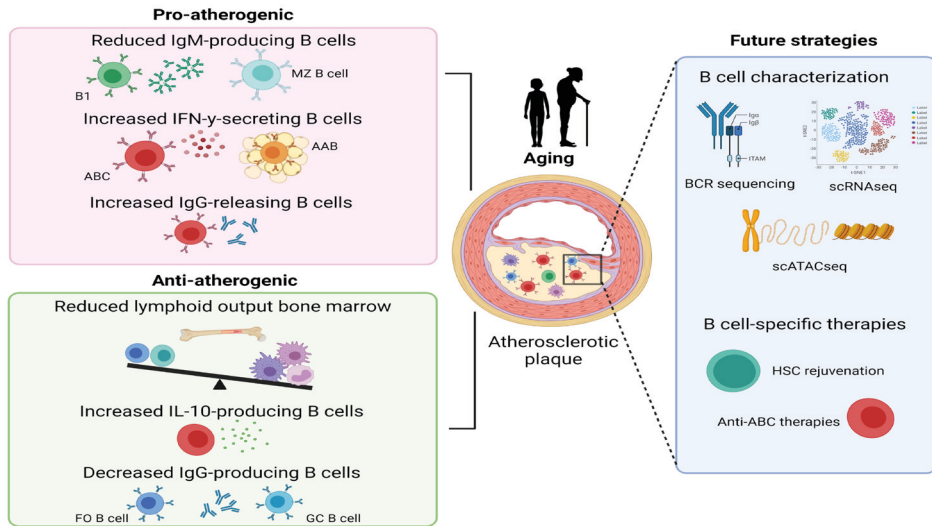


Figure 2. Potential effects of aging on atherosclerosis development and future strategies for B cell-specific treatment against atherosclerosis. B cell aging leads to reduced lymphoid output, reduced numbers of IgM-producing B cells and an increase in age-related B cell subsets, thereby resulting in both pro- and anti-atherogenic effects. Further characterization of B cells in atherosclerosis via single-cell RNA sequencing, BCR sequencing and single-cell assay for transposase-accessible chromatin sequencing should give further insights for the development of B cell-specific therapies against atherosclerosis, such as HSC rejuvenation and anti-ABC treatments.

Although studies investigating the effects of inflammaging on cardiovascular disease (CVD) are scarce, the increased prevalence of atherosclerosis upon aging suggests an important role for age-related immune alterations in atherosclerosis. Importantly, acute cardiovascular events mostly occur in the elderly and thus treatment of CVD patients occurs in the context of an aged immune system. Recent single-cell RNA sequencing (scRNAseq) studies have shown that B cells are present in atherosclerotic plaques of aged CVD patients^{219–221} and an increased understanding of the contributions of age-induced B cell impairment to atherosclerosis progression is therefore crucial for atherosclerosis immunotherapy. Similar to the human atherosclerotic plaque, transcriptomic and single-cell analysis revealed that B cells are present in high-fat diet-induced lesions of young *Apoe*^{-/-} and *Ldlr*^{-/-} mice.^{222–224} Although these studies show that the number of lesional B cells is limited, B cells have also been located in the perivascular adipose tissue surrounding the atherosclerotic aorta.²²⁵ In addition, several studies identified the presence of artery tertiary lymphoid organs (ATLOs) in close proximity of the aortic lesions of aged (75–85 weeks) *Apoe*^{-/-} mice.^{226,227} ATLOs are lymphoid aggregates that form in the adventitia which contain high numbers of B cells, including B-1, GC and switched memory B cells.²²⁸ However, these

ATLOs have only been identified in *Apoe*^{-/-} mice and single-cell RNA sequencing analysis has not been performed on the atherosclerotic lesions of aged *Apoe*^{-/-} or *Ldlr*^{-/-} mice to profile local B cells. During atherosclerosis progression, apoptotic and necrotic cells accumulate^{229,230} and enhance TLR7 and TLR9 ligands in the microenvironment. Possibly, this could promote the development of age-associated B cell subsets that contribute to atherosclerosis by the production of autoreactive IgG2a antibodies and the secretion of cytokines, such as IFN γ and IL-17. As aging studies in atherosclerosis are limited, future research focusing on age-induced changes in B cell numbers, subsets and function in atherosclerosis, as indicated in **Figure 2**, will provide essential fundamental knowledge regarding disease etiology and may lead to novel targets to halt atherosclerosis progression.

Future strategies to target the aged B cell in chronic inflammatory disease

Due to the demographic shift towards an older population and the age-related increase in chronic inflammatory diseases, it has become a major public health priority to combat age-induced maladaptive immunity. Since aging reduces the lymphoid output of HSCs, HSC rejuvenation therapies, such as FOXOs and Cdc42 activity specific inhibitor (CASIN)²³¹, might be interesting therapeutic strategies to restore the balance between the myeloid and lymphoid pool. FOXOs are transcription factors which are involved in longevity and aging by regulating cell survival and growth.²³² Specific deletion of FOXO1 and FOXO3a in HSCs induced apoptosis^{233,234}, suggesting that FOXO overexpression might increase HSC survival. In addition to FOXOs, high Cdc42 activity was associated with HSC aging and treatment of aged HSCs with CASIN increased the common lymphoid progenitor pool, restored B cell numbers and elongated lifespan after transplant.^{235,236} A more B cell-specific targeting drug, rituximab, proved to be effective in reducing RA and MS.^{237–239} Interestingly, Novikova *et al.* showed that rituximab also reduced atherosclerosis development in RA patients²⁴⁰, indicating that B cell lymphopoiesis should be inhibited rather than stimulated in order to halt atherosclerosis progression in this setting. Notably, CD20 blockade inhibits all B cell subsets, except plasma cells and plasmablasts. Therapeutic strategies specifically targeting pro-inflammatory B cell subsets, such as ABCs and AABs, might therefore be more attractive to combat age-related immune diseases. NLRP3 inflammasome inhibition might be a potential candidate for this approach. Activation of the NLRP3 inflammasome is an important signaling pathway for ABC and AAB activation.¹⁵² Deficiency of this pathway in aged mice significantly reduced ABC and AAB numbers compared to wildtype aged mice.¹⁵² Notably, NLRP3 expression is not exclusively expressed by ABCs and AABs, underlining the urgency of the characterization of aged B cells in inflammatory diseases to develop specific anti-ABC therapies. Future studies identifying unique (age-associated) B cell subset markers, such as transcription factors, growth and survival receptors and immune checkpoints, are thus crucial to develop strategies to target ABCs or other pro-inflammatory B cell subsets in age-related diseases. Deep sequencing of the BCR could also provide important details for such cell-specific therapies.²⁴¹ Recent BCR sequencing in young (20-45 years old) and old (60-80 years old) adults showed decreased BCR diversity, increased BCR clonality and different expression of BCR VHJ genes in aged patients²⁴², indicating that the aged immune cell repertoire might respond differently to pathogens and therapeutic agents. In addition, investigating autoantibodies produced by aged B cells might result in the identification of novel auto-antigens in chronic inflammatory diseases.²⁴³ Moreover, epigenetic alterations affecting B cell development, function and responses are observed with aging^{244–246} and might contribute to age-associated changes in the B cell repertoire.

CONCLUSION

With a rapidly rising life expectancy and demographic shift towards elderly, it is essential to enhance our understanding of age-associated immunity that causes disease susceptibility and mortality. In this review, we focused on age-associated alterations in B cell homeostasis in health and disease. Collectively, aging negatively affects the production of B cells in the bone marrow, resulting in decreased numbers of B-1 and B-2 cells. Moreover, antibody affinity and diversity are reduced upon aging, resulting in impaired antibody responses. Furthermore, aging induces the expansion of age-associated and adipose-resident age-related B cells, which contribute to inflammaging by the activation of pro-inflammatory T cell subsets and cytokine release. Although B cells are key drivers of autoimmune diseases, such as atherosclerosis, data on B cell aging in chronic inflammatory diseases is limited. Future studies identifying the aged B cell repertoire, including age-associated alterations in B cell numbers, subsets and antibody responses, are urgently needed in order to develop innovative B cell-specific therapies to combat chronic inflammatory diseases.

CONFLICT OF INTEREST

The authors declare that the research was conducted in the absence of any commercial or financial relationships that could be construed as a potential conflict of interest.

AUTHOR CONTRIBUTIONS

J.d.M. and A.C.F. drafted the review and J.d.M. designed the Figures. J.K., D.T., and A.C.F. provided critical feedback on the manuscript.

FUNDING

This work is supported by the European Research Area Network (ERA-CVD B-eatATHERO consortium); Dutch Heart Foundation grant number 2019T107 to A.C.F. and Austrian Science Fund (FWF) grant number I4647 to D.T.

LIST OF ABBREVIATIONS

Apoe	apolipoprotein E
ATLO	artery tertiary lymphoid organ
BAFF	B cell activating factor
BAFFR	B cell activating factor receptor
BCR	B cell receptor
Breg	regulatory B cell
CASIN	Cdc42 activity specific inhibitor
CSR	class-switch recombination
CVD	cardiovascular disease
CVID	common variable immunodeficiency
DC	dendritic cell

Chapter 2

FO	follicular
GC	germinal center
GM-CSF	granulocyte macrophage-colony stimulating factor
HSC	hematopoietic stem cell
IRA	innate response activator
MHC	major histocompatibility complex
MZ	marginal zone
oxLDL	oxidized low-density lipoprotein
pre-B cells	precursor B cells
pro-B cells	progenitor B cells
RA	rheumatoid arthritis
scATAC seq	single-cell assay for transposase-accessible chromatin sequencing
scRNAseq	single-cell RNA sequencing
SIGLEC-G	sialic acid-binding immunoglobulin-like lectin G
SLE	systemic lupus erythematosus
TD	T cell-dependent
T _{FH}	follicular helper T cell
TI	T cell-independent
TLR	toll-like receptor
Treg	regulatory T cell
VAT	visceral adipose tissue

ACKNOWLEDGEMENTS

The Figures were made using BioRender.com.

REFERENCES

1. Weyand, C. M. & Goronzy, J. J. Aging of the immune system: Mechanisms and therapeutic targets. in *Annals of the American Thoracic Society* vol. 13 S422–S428 (American Thoracic Society, 2016).
2. Wang, H. et al. Global, regional, and national life expectancy, all-cause mortality, and cause-specific mortality for 249 causes of death, 1980–2015: a systematic analysis for the Global Burden of Disease Study 2015. *Lancet* 388, 1459–1544 (2016).
3. Nishi, K. et al. Age-Associated Myeloid Biased Hematopoiesis Depends on Relative Decrease of Short-Term Hematopoietic Stem Cell. *Blood* 134, 2481–2481 (2019).
4. Rodrigues, L. P. et al. Hallmarks of aging and immunosenescence: Connecting the dots. *Cytokine and Growth Factor Reviews* vol. 59 9–21 (2021).
5. Wessels, I., Jansen, J., Rink, L. & Uciechowski, P. Immunosenescence of polymorphonuclear neutrophils. *TheScientificWorldJournal* vol. 10 145–160 (2010).
6. Kohut, M. L. et al. Age effects on macrophage function vary by tissue site, nature of stimulant, and exercise behavior. *Exp. Gerontol.* 39, 1347–1360 (2004).
7. Agrawal, A. et al. Altered Innate Immune Functioning of Dendritic Cells in Elderly Humans: A Role of Phosphoinositide 3-Kinase-Signaling Pathway. *J. Immunol.* 178, 6912–6922 (2007).
8. Wong, G. C. L., Strickland, M. C. & Larbi, A. Changes in T Cell Homeostasis and Vaccine Responses in Old Age. *Interdiscip. Top. Gerontol. Geriatr.* 43, 36–55 (2020).
9. Mittelbrunn, M. & Kroemer, G. Hallmarks of T cell aging. *Nature Immunology* vol. 22 687–698 (2021).
10. Eaton, S. M., Burns, E. M., Kusser, K., Randall, T. D. & Haynes, L. Age-related defects in CD4 T cell cognate helper function lead to reductions in humoral responses. *J. Exp. Med.* 200, 1613–1622 (2004).
11. Frasca, D. & Blomberg, B. B. Aging induces B cell defects and decreased antibody responses to influenza infection and vaccination. *Immunity and Ageing* vol. 17 1–10 (2020).
12. Wong, L. S. Y. et al. Age-Related Differences in Immunological Responses to SARS-CoV-2. *J. Allergy Clin. Immunol. Pract.* 8, 3251–3258 (2020).
13. Ma, S., Wang, C., Mao, X. & Hao, Y. B Cells dysfunction associated with aging and autoimmune disease. *Frontiers in Immunology* vol. 10 318 (2019).
14. Montecino-Rodriguez, E. & Dorshkind, K. B-1 B Cell Development in the Fetus and Adult. *Immunity* vol. 36 13–21 (2012).
15. Hardy, R. R. & Hayakawa, K. B cell development pathways. (2001).
16. Martin, V. G. et al. Transitional B Cells in Early Human B Cell Development – Time to Revisit the Paradigm? *Front. Immunol.* 0, 546 (2016).
17. Hardy, R. R. & Shinton, S. Characterization of B lymphopoiesis in mouse bone marrow and spleen. *Methods Mol. Biol.* 271, 1–24 (2004).
18. Roth, D. B. V(D)J Recombination: Mechanism, Errors, and Fidelity. in *Mobile DNA III* vol. 2 313–324 (American Society of Microbiology, 2015).
19. Schatz, D. G. & Ji, Y. Recombination centres and the orchestration of V(D)J recombination. *Nature Reviews Immunology* vol. 11 251–263 (2011).
20. Pierce, S. K. & Liu, W. The tipping points in the initiation of B cell signalling: How small changes make big differences. *Nature Reviews Immunology* vol. 10 767–777 (2010).
21. Loder, F. et al. B cell development in the spleen takes place in discrete steps and is determined by the quality of B cell receptor-derived signals. *J. Exp. Med.* 190, 75–89 (1999).
22. Reimold, A. M. et al. Plasma cell differentiation requires the transcription factor XBP-1. *Nature* 412, 300–307 (2001).
23. Hua, Z. & Hou, B. The role of B cell antigen presentation in the initiation of CD4+ T cell response. *Immunol. Rev.* 296, 24–35 (2020).
24. Hong, S. et al. B Cells Are the Dominant Antigen-Presenting Cells that Activate Naive CD4+ T Cells upon Immunization with a Virus-Derived Nanoparticle Antigen. *Immunity* 49, 695–708 (2018).
25. Wang, Y. & Rothstein, T. L. Induction of Th17 cell differentiation by B-1 cells. *Front. Immunol.* 3, 281 (2012).
26. Molnarfi, N. et al. MHC class II-dependent B cell APC function is required for induction of CNS autoimmunity independent of myelin-specific antibodies. *J. Exp. Med.* 210, 2921–2937 (2013).
27. Barrio, L. et al. B Cell Development and T-Dependent Antibody Response Are Regulated by p38 γ and p38 δ . *Front. Cell Dev. Biol.* 8, 189 (2020).
28. Allman, D., Wilmore, J. R. & Gaudette, B. T. The continuing story of T-cell independent antibodies. *Immunol. Rev.* 288, 128–135 (2019).
29. Wang, L. D. & Clark, M. R. B-cell antigen-receptor signalling in lymphocyte development. *Immunology* 110, 411–420 (2003).
30. Nutt, S. L., Hodgkin, P. D., Tarlinton, D. M. & Corcoran, L. M. The generation of antibody-secreting plasma cells. *Nat. Rev. Immunol.* 15, 160–171 (2015).
31. Taubenheim, N. et al. High Rate of Antibody Secretion Is not Integral to Plasma Cell Differentiation as Revealed by XBP-1 Deficiency. *J. Immunol.* 189, 3328–3338 (2012).
32. Hayakawa, K., Hardy, R. R., Herzenberg, L. A. & Herzenberg, L. A. Progenitors for Ly-1 b cells are distinct from progenitors for other b cells. *J. Exp. Med.* 161, 1554–1568 (1985).
33. Haas, K. M., Poe, J. C., Steeber, D. A. & Tedder, T. F. B-1a and B-1b cells exhibit distinct developmental requirements and have unique functional roles in innate and adaptive immunity to *S. pneumoniae*. *Immunity* 23, 7–18 (2005).

34. Rothstein, T. L. et al. Peripheral Blood Including B-1 Cells, in Human Adult Antibody-Secreting Cell Populations, Distinctions among Circulating. (2020) doi:10.4049/jimmunol.1501843.
35. Tornberg, U. C. & Holmberg, D. B-1a, B-1b and B-2 B cells display unique VHDJH repertoires formed at different stages of ontogeny and under different selection pressures. *EMBO J.* 14, 1680 (1995).
36. Gregoire, K. E., Goldschneider, I., Barton, R. W. & Bolland, F. J. Ontogeny of Terminal Deoxynucleotidyl Transferase-Positive Cells in Lymphohemopoietic Tissues of Rat and Mouse. *J. Immunol.* 123, (1979).
37. Ghosn, E. E. B. et al. Fetal Hematopoietic Stem Cell Transplantation Fails to Fully Regenerate the B-Lymphocyte Compartment. *Stem Cell Reports* 6, 137–149 (2016).
38. Montecino-Rodriguez, E. et al. Distinct Genetic Networks Orchestrate the Emergence of Specific Waves of Fetal and Adult B-1 and B-2 Development. *Immunity* 45, 527–539 (2016).
39. Yuan, J., Nguyen, C. K., Liu, X., Kanellopoulou, C. & Muljo, S. A. Lin28b Reprograms Adult Bone Marrow Hematopoietic Progenitors to Mediate Fetal-Like Lymphopoiesis. *Science* (80-.). 335, 1195–1200 (2012).
40. Parra, D. et al. Pivotal Advance: Peritoneal cavity B-1 B cells have phagocytic and microbicidal capacities and present phagocytosed antigen to CD4+ T cells. *J. Leukoc. Biol.* 91, 525 (2012).
41. Wong, J. B. et al. B-1a cells acquire their unique characteristics by bypassing the pre-BCR selection stage. *Nat. Commun.* 10, 1–15 (2019).
42. Holodick, N. E., Rodríguez-Zhurbenko, N. & Hernández, A. M. Defining natural antibodies. *Front. Immunol.* 8, 872 (2017).
43. Baumgarth, N. et al. B-1 and B-2 Cell-Derived Immunoglobulin M Antibodies Are Nonredundant Components of the Protective Response to Influenza Virus Infection. *J. Exp. Med.* 192, 271–280 (2000).
44. Foote, J. B. & Kearney, J. F. Generation of B cell Memory to the Bacterial Polysaccharide α 1 \rightarrow 3-dextran. *J. Immunol.* 183, 6359 (2009).
45. Rivera, A., Chen, C.-C., Ron, N., Dougherty, J. P. & Ron, Y. Role of B cells as antigen-presenting cells in vivo revisited: antigen-specific B cells are essential for T cell expansion in lymph nodes and for systemic T cell responses to low antigen concentrations. *International Immunology* vol. 13 (2001).
46. Chen, X. & Jensen, P. E. The role of B lymphocytes as antigen-presenting cells. *Archivum Immunologiae et Therapiae Experimentalis* vol. 56 77–83 (2008).
47. Rossetti, R. A. M. et al. B lymphocytes can be activated to act as antigen presenting cells to promote anti-tumor responses. *PLoS One* 13, e0199034 (2018).
48. Popi, A. F., Longo-Maugéri, I. M. & Mariano, M. An overview of B-1 cells as antigen-presenting cells. *Frontiers in Immunology* vol. 7 138 (2016).
49. Margry, B., Wieland, W. H., van Kooten, P. J., van Eden, W. & Broere, F. Peritoneal cavity B-1a cells promote peripheral CD4+ T-cell activation. *Eur. J. Immunol.* 43, 2317–2326 (2013).
50. Rauch, P. J. et al. Innate response activator B cells protect against microbial sepsis. *Science* (80-.). 335, 597–601 (2012).
51. Wang, M. et al. Interleukin-3/granulocyte macrophage colony-stimulating factor receptor promotes stem cell expansion, monocytosis, and atheroma macrophage burden in mice with hematopoietic ApoE deficiency. *Arterioscler. Thromb. Vasc. Biol.* 34, 976–984 (2014).
52. Weber, G. F. et al. Interleukin-3 amplifies acute inflammation and is a potential therapeutic target in sepsis. *Science* (80-.). 347, 1260–1265 (2015).
53. Rauch, M., Tussiwand, R., Bosco, N. & Rolink, A. G. Crucial role for BAFF-BAFF-R signaling in the survival and maintenance of mature B cells. *PLoS One* 4, 5456 (2009).
54. Hsu, B. L., Harless, S. M., Lindsley, R. C., Hilbert, D. M. & Cancro, M. P. Cutting Edge: BLyS Enables Survival of Transitional and Mature B Cells Through Distinct Mediators. *J. Immunol.* 168, 5993–5996 (2002).
55. Nardelli, B. et al. Synthesis and release of B-lymphocyte stimulator from myeloid cells. *Blood* 97, 198–204 (2001).
56. Smulski, C. R. & Eibel, H. BAFF and BAFF-receptor in B cell selection and survival. *Frontiers in Immunology* vol. 9 2285 (2018).
57. Pillai, S. & Cariappa, A. The follicular versus marginal zone B lymphocyte cell fate decision. *Nature Reviews Immunology* vol. 9 767–777 (2009).
58. Tanigaki, K. et al. Notch-RBP-J signaling is involved in cell fate determination of marginal zone B cells. *Nat. Immunol.* 3, 443–450 (2002).
59. Kanayama, N., Cascalho, M. & Ohmori, H. Analysis of Marginal Zone B Cell Development in the Mouse with Limited B Cell Diversity: Role of the Antigen Receptor Signals in the Recruitment of B Cells to the Marginal Zone. *J. Immunol.* 174, 1438–1445 (2005).
60. Zouali, M. & Richard, Y. Marginal zone B-cells, a gatekeeper of innate immunity. *Front. Immunol.* 2, (2011).
61. Attanavanich, K. & Kearney, J. F. Marginal Zone, but Not Follicular B Cells, Are Potent Activators of Naive CD4 T Cells. *J. Immunol.* 172, 803–811 (2004).
62. Qazi, K. R., Gehrmann, U., Jordö, E. D., Karlsson, M. C. I. & Gabrielsson, S. Antigen-loaded exosomes alone induce Th1-type memory through a B cell dependent mechanism. *Blood* 113, 2673–2683 (2009).
63. Weisel, F. J., Zuccarino-Catania, G. V., Chikina, M. & Shlomchik, M. J. A Temporal Switch in the Germinal Center Determines Differential Output of Memory B and Plasma Cells. *Immunity* 44, 116–130 (2016).
64. Zhang, T. T. et al. Germinal center B cell development has distinctly regulated stages completed by disengagement from T cell help. *Elife* 6, (2017).
65. Lossos, I. S., Levy, R. & Alizadeh, A. A. AID is expressed in germinal center B-cell-like and activated B-cell-like diffuse large-cell lymphomas and is not correlated with intraclonal heterogeneity. *Leukemia* 18, 1775–1779 (2004).

66. Stavnezer, J. & Schrader, C. E. IgH Chain Class Switch Recombination: Mechanism and Regulation. *J. Immunol.* 193, 5370–5378 (2014).
67. Péron, S. et al. AID-driven deletion causes immunoglobulin heavy chain locus suicide recombination in B cells. *Science* (80-.). 336, 931–934 (2012).
68. Alhabbab, R. Y. et al. Regulatory B cells: Development, phenotypes, functions, and role in transplantation. *Immunol. Rev.* 292, 164–179 (2019).
69. Rosser, E. C. & Mauri, C. Regulatory B Cells: Origin, Phenotype, and Function. *Immunity* vol. 42 607–612 (2015).
70. Peng, B., Ming, Y. & Yang, C. Regulatory B cells: the cutting edge of immune tolerance in kidney transplantation. *Cell Death Dis.* 9, 109 (2018).
71. Yoshizaki, A. et al. Regulatory B cells control T-cell autoimmunity through IL-21-dependent cognate interactions. *Nature* 491, 264–268 (2012).
72. Lampropoulou, V. et al. TLR-Activated B Cells Suppress T Cell-Mediated Autoimmunity. *J. Immunol.* 180, 4763–4773 (2008).
73. Wang, R.-X. et al. Interleukin-35 induces regulatory B cells that suppress autoimmune disease. *Nat. Med.* 2014 206 20, 633–641 (2014).
74. Yanaba, K., Bouaziz, J.-D., Matsushita, T., Tsubata, T. & Tedder, T. F. The Development and Function of Regulatory B Cells Expressing IL-10 (B10 Cells) Requires Antigen Receptor Diversity and TLR Signals. *J. Immunol.* 182, 7459–7472 (2009).
75. Boldison, J., Da Rosa, L. C., Davies, J., Wen, L. & Wong, F. S. Dendritic cells license regulatory B cells to produce IL-10 and mediate suppression of antigen-specific CD8 T cells. *Cell. Mol. Immunol.* 1–13 (2019) doi:10.1038/s41423-019-0324-z.
76. Mauri, C. & Nistala, K. Interleukin-35 takes the ‘B’ line. *Nature Medicine* vol. 20 580–581 (2014).
77. Lee, K. M. et al. TGF- β -producing regulatory B cells induce regulatory T cells and promote transplantation tolerance. *Eur. J. Immunol.* 44, 1728–1736 (2014).
78. Daien, C. I. et al. Regulatory B10 Cells Are Decreased in Patients With Rheumatoid Arthritis and Are Inversely Correlated With Disease Activity. *Arthritis Rheumatol.* 66, 2037–2046 (2014).
79. Hua, C. et al. A proliferation inducing ligand (APRIL) promotes IL-10 production and regulatory functions of human B cells. *J. Autoimmun.* 73, 64–72 (2016).
80. Zacca, E. R. et al. PD-L1+ Regulatory B Cells Are Significantly Decreased in Rheumatoid Arthritis Patients and Increase After Successful Treatment. *Front. Immunol.* 0, 2241 (2018).
81. Xiao, S., Brooks, C. R., Sobel, R. A. & Kuchroo, V. K. Tim-1 Is Essential for Induction and Maintenance of IL-10 in Regulatory B Cells and Their Regulation of Tissue Inflammation. *J. Immunol.* 194, 1602–1608 (2015).
82. Kaku, H., Cheng, K. F., Al-Abed, Y. & Rothstein, T. L. A Novel Mechanism of B Cell-Mediated Immune Suppression through CD73 Expression and Adenosine Production. *J. Immunol.* 193, 5904–5913 (2014).
83. Kim, A. S. et al. Regulatory B cells and T follicular helper cells are reduced in allergic rhinitis. *J. Allergy Clin. Immunol.* 138, 1192–1195.e5 (2016).
84. Lundy, S. K. & Boros, D. L. Fas ligand-expressing B-1a lymphocytes mediate CD4+T-cell apoptosis during schistosomal infection: Induction by interleukin 4 (IL-4) and IL-10. *Infect. Immun.* 70, 812–819 (2002).
85. Miller, J. P. & Allman, D. The Decline in B Lymphopoiesis in Aged Mice Reflects Loss of Very Early B-Lineage Precursors. *J. Immunol.* 171, 2326–2330 (2003).
86. Alter-Wolf, S., Blomberg, B. B. & Riley, R. L. Deviation of the B Cell Pathway in Senescent Mice Is Associated with Reduced Surrogate Light Chain Expression and Altered Immature B Cell Generation, Phenotype, and Light Chain Expression. *J. Immunol.* 182, 138–147 (2009).
87. Guerretaz, L. M., Johnson, S. A. & Cambier, J. C. Acquired hematopoietic stem cell defects determine B-cell repertoire changes associated with aging. *Proc. Natl. Acad. Sci. U. S. A.* 105, 11898–11902 (2008).
88. McKenna, R. W., Asplund, S. L. & Kroft, S. H. Immunophenotypic analysis of hematogones (B-Lymphocyte precursors) and neoplastic lymphoblast by 4-color flow cytometry. *Leuk. Lymphoma* 45, 277–285 (2004).
89. Muller-Sieburg, C. E., Sieburg, H. B., Bernitz, J. M. & Cattarossi, G. Stem cell heterogeneity: Implications for aging and regenerative medicine. *Blood* vol. 119 3900–3907 (2012).
90. Labrie, J. E., Sah, A. P., Allman, D. M., Cancro, M. P. & Gerstein, R. M. Bone marrow microenvironmental changes underlie reduced RAG-mediated recombination and B cell generation in aged mice. *J. Exp. Med.* 200, 411–423 (2004).
91. Kline, G. H., Hayden, T. A. & Klinman, N. R. B Cell Maintenance in Aged Mice Reflects Both Increased B Cell Longevity and Decreased B Cell Generation. <http://www.jimmunol.org/content/162/6/3342> (2020).
92. Karnell, J. L. et al. Role of CD11c+ T-bet+ B cells in human health and disease. *Cellular Immunology* vol. 321 40–45 (2017).
93. Frasca, D. et al. Aging Down-Regulates the Transcription Factor E2A, Activation-Induced Cytidine Deaminase, and Ig Class Switch in Human B Cells. *J. Immunol.* 180, 5283–5290 (2008).
94. Reynaud, C. A. et al. IgM memory B cells: A mouse/human paradox. *Cellular and Molecular Life Sciences* vol. 69 1625–1634 (2012).
95. Benítez, A. et al. Differences in Mouse and Human Nonmemory B Cell Pools. *J. Immunol.* 192, 4610–4619 (2014).
96. Frasca, D., Riley, R. L. & Blomberg, B. B. Aging murine B cells have decreased class switch induced by anti-CD40 or BAFF. *Exp. Gerontol.* 42, 192–203 (2007).
97. Han, S. et al. Enhanced Differentiation of Splenic Plasma Cells but Diminished Long-Lived High-Affinity Bone Marrow Plasma Cells in Aged Mice. *J. Immunol.* 170, 1267–1273 (2003).

98. Speziali, E. et al. Specific immune responses but not basal functions of B and T cells are impaired in aged mice. *Cell. Immunol.* 256, 1–5 (2009).
99. Barber, C. L., Montecino-Rodriguez, E. & Dorshkind, K. Reduced production of B-1-specified common lymphoid progenitors results in diminished potential of adult marrow to generate B-1 cells. *Proc. Natl. Acad. Sci. U. S. A.* 108, 13700–13704 (2011).
100. Alter-Wolf, S., Blomberg, B. B. & Riley, R. L. Old mice retain bone marrow B1 progenitors, but lose B2 precursors, and exhibit altered immature B cell phenotype and light chain usage. *Mech. Ageing Dev.* 130, 401–408 (2009).
101. Hinkley, K. S., Chiasson, R. J., Prior, T. K. & Riggs, J. E. Age-dependent increase of peritoneal B-1b B cells in SCID mice. *Immunology* 105, 196–203 (2002).
102. Rodriguez-Zhurbenko, N., Quach, T. D., Hopkins, T. J., Rothstein, T. L. & Hernandez, A. M. Human B-1 cells and B-1 cell antibodies change with advancing age. *Front. Immunol.* 10, 483 (2019).
103. Colonna-Romano, G. et al. B cells in the aged: CD27, CD5, and CD40 expression. in *Mechanisms of Ageing and Development* vol. 124 389–393 (Elsevier Ireland Ltd, 2003).
104. Iwakoshi, N. N. et al. Plasma cell differentiation and the unfolded protein response intersect at the transcription factor XBP-1. *Nat. Immunol.* 4, 321–329 (2003).
105. Tellier, J. et al. Blimp-1 controls plasma cell function through the regulation of immunoglobulin secretion and the unfolded protein response. *Nat. Immunol.* 17, 323–330 (2016).
106. Nera, K. P. et al. Loss of Pax5 promotes plasma cell differentiation. *Immunity* 24, 283–293 (2006).
107. Adler, H., Ferreira, D. M., Gordon, S. B. & Rylance, J. Pneumococcal capsular polysaccharide immunity in the elderly. *Clinical and Vaccine Immunology* vol. 24 (2017).
108. Holodick, N. E., Repetny, K., Zhong, X. & Rothstein, T. L. Adult BM generates CD5+ B1 cells containing abundant N-region additions. *Eur. J. Immunol.* 39, 2383–2394 (2009).
109. Lee-Chang, C. et al. Aging Converts Innate B1a Cells into Potent CD8 + T Cell Inducers . *J. Immunol.* 196, 3385–3397 (2016).
110. Lee-Chang, C. et al. Accumulation of 4-1BBL+ B cells in the elderly induces the generation of granzyme-B+ CD8+ T cells with potential antitumor activity. *Blood* 124, 1450–1459 (2014).
111. Hu, A. et al. Effect of age on the expressed B cell repertoire: Role of B cell subsets. *Int. Immunol.* 5, 1035–1039 (1993).
112. Aydar, Y., Balogh, P., Tew, J. G. & Szakal, A. K. Follicular dendritic cells in aging, a ‘bottle-neck’ in the humoral immune response. *Ageing Research Reviews* vol. 3 15–29 (2004).
113. Lim, H. W., Hillsamer, P., Banham, A. H. & Kim, C. H. Cutting Edge: Direct Suppression of B Cells by CD4 + CD25 + Regulatory T Cells . *J. Immunol.* 175, 4180–4183 (2005).
114. Sharma, S., Dominguez, A. L. & Lustgarten, J. High Accumulation of T Regulatory Cells Prevents the Activation of Immune Responses in Aged Animals. *J. Immunol.* 177, 8348–8355 (2006).
115. Sage, P. T., Tan, C. L., Freeman, G. J., Haigis, M. & Sharpe, A. H. Defective TFH cell function and increased TFR cells contribute to defective antibody production in aging. *Cell Rep.* 12, 163 (2015).
116. Yang, X., Stedra, J. & Cerny, J. Relative contribution of T and B cells to hypermutation and selection of the antibody repertoire in germinal centers of aged mice. *J. Exp. Med.* 183, 959–970 (1996).
117. Frasca, D., Van der Put, E., Riley, R. L. & Blomberg, B. B. Reduced Ig Class Switch in Aged Mice Correlates with Decreased E47 and Activation-Induced Cytidine Deaminase. *J. Immunol.* 172, 2155–2162 (2004).
118. Frasca, D. & Blomberg, B. B. Aging impairs murine B cell differentiation and function in primary and secondary lymphoid tissues. *Ageing and Disease* vol. 2 361–373 (2011).
119. Miller, J. P. & Cancro, M. P. B cells and aging: Balancing the homeostatic equation. *Experimental Gerontology* vol. 42 396–399 (2007).
120. Masters, A. R., Jellison, E. R., Puddington, L., Khanna, K. M. & Haynes, L. Attrition of T Cell Zone Fibroblastic Reticular Cell Number and Function in Aged Spleens. *ImmunoHorizons* 2, 155–163 (2018).
121. Dailey, R. W., Eun, S.-Y., Russell, C. E. & Vogel, L. A. B Cells of Aged Mice Show Decreased Expansion in Response to Antigen, But Are Normal in Effector Function. (2001) doi:10.1006/cimm.2001.1894.
122. Bulati, M. et al. B cells and immunosenescence: A focus on IgG+IgD-CD27- (DN) B cells in aged humans. *Ageing Research Reviews* vol. 10 274–284 (2011).
123. Dunn-Walters, D. K. The ageing human B cell repertoire: a failure of selection? *Clin. Exp. Immunol.* 183, 50–56 (2016).
124. Thien, M. et al. Excess BAFF rescues self-reactive B cells from peripheral deletion and allows them to enter forbidden follicular and marginal zone niches. *Immunity* 20, 785–798 (2004).
125. Jin, R. et al. Age-related changes in BAFF and APRIL profiles and upregulation of BAFF and APRIL expression in patients with primary antibody deficiency. *Int. J. Mol. Med.* 21, 233–238 (2008).
126. Cortegano, I. et al. Altered marginal zone and innate-like B cells in aged senescence-accelerated SAMP8 mice with defective IgG1 responses. *Cell Death Dis.* 8, e3000 (2017).
127. Birjandi, S. Z., Ippolito, J. A., Ramadorai, A. K. & Witte, P. L. Alterations in Marginal Zone Macrophages and Marginal Zone B Cells in Old Mice. *J. Immunol.* 186, 3441–3451 (2011).
128. Turner, V. M. & Mabbott, N. A. Ageing adversely affects the migration and function of marginal zone B cells. *Immunology* 151, 349–362 (2017).
129. Ratliff, M., Alter, S., Frasca, D., Blomberg, B. B. & Riley, R. L. In senescence, age-associated b cells secrete tnfa and inhibit survival of b-cell precursors. *Ageing Cell* 12, 303–311 (2013).

130. Du, S. W. et al. Functional Characterization of CD11c + Age-Associated B Cells as Memory B Cells . J. Immunol. 203, 2817–2826 (2019).
131. Hao, Y., O'Neill, P., Naradikian, M. S., Scholz, J. L. & Cancro, M. P. A B-cell subset uniquely responsive to innate stimuli accumulates in aged mice. Blood 118, 1294–1304 (2011).
132. Russell Knode, L. M. et al. Age-Associated B Cells Express a Diverse Repertoire of V H and V κ Genes with Somatic Hypermutation . J. Immunol. 198, 1921–1927 (2017).
133. Swain, S. L., Kugler-Umana, O., Kuang, Y. & Zhang, W. The properties of the unique age-associated B cell subset reveal a shift in strategy of immune response with age. Cell. Immunol. 321, 52–60 (2017).
134. Van Zelm, M. C., Szczepański, T., Van Der Burg, M. & Van Dongen, J. J. M. Replication history of B lymphocytes reveals homeostatic proliferation and extensive antigen-induced B cell expansion. J. Exp. Med. 204, 645–655 (2007).
135. Du, S. W., Arkatkar, T., Jacobs, H. M., Rawlings, D. J. & Jackson, S. W. Generation of functional murine CD11c + age-associated B cells in the absence of B cell T-bet expression. Eur. J. Immunol. 49, 170–178 (2019).
136. Riley, R. L., Khomtchouk, K. & Blomberg, B. B. Age-associated B cells (ABC) inhibit B lymphopoiesis and alter antibody repertoires in old age. Cell. Immunol. 321, 61–67 (2017).
137. Keren, Z. et al. B-cell depletion reactivates B lymphopoiesis in the BM and rejuvenates the B lineage in aging. Blood 117, 3104–3112 (2011).
138. Rubtsov, A. V. et al. Toll-like receptor 7 (TLR7)-driven accumulation of a novel CD11c+ B-cell population is important for the development of autoimmunity. Blood 118, 1305–1315 (2011).
139. Naradikian, M. S. et al. IL4, IL21, and IFN γ interact to govern TBET and CD11c expression in TLR-activated B cells. J. Immunol. 197, 1023 (2016).
140. Jenks, S. A. et al. Distinct Effector B Cells Induced by Unregulated Toll-like Receptor 7 Contribute to Pathogenic Responses in Systemic Lupus Erythematosus. Immunity 49, 725–739.e6 (2018).
141. Peng, S. L., Szabo, S. J. & Glimcher, L. H. T-bet regulates IgG class switching and pathogenic autoantibody production. Proc. Natl. Acad. Sci. U. S. A. 99, 5545–5550 (2002).
142. Barnett, B. E. et al. Cutting Edge: B Cell-Intrinsic T-bet Expression Is Required To Control Chronic Viral Infection. J. Immunol. 197, 1017–1022 (2016).
143. Ellebedy, A. H. et al. Defining antigen-specific plasmablast and memory B cell subsets in human blood after viral infection or vaccination. Nat. Immunol. 17, 1226–1234 (2016).
144. Colonna-Romano, G. et al. A double-negative (IgD-CD27-) B cell population is increased in the peripheral blood of elderly people. Mech. Ageing Dev. 130, 681–690 (2009).
145. Wang, S. et al. IL-21 drives expansion and plasma cell differentiation of autoreactive CD11c^{hi}T-bet⁺ B cells in SLE. Nat. Commun. 9, 1–14 (2018).
146. Isnardi, I. et al. Complement receptor 2/CD21- human naive B cells contain mostly autoreactive unresponsive clones. Blood 115, 5026–5036 (2010).
147. Rubtsov, A. V. et al. CD11c-Expressing B Cells Are Located at the T Cell/B Cell Border in Spleen and Are Potent APCs. J. Immunol. 195, 71–79 (2015).
148. Lim, M. A. et al. Increased Th17 differentiation in aged mice is significantly associated with high IL-1 β level and low IL-2 expression. Exp. Gerontol. 49, 55–62 (2014).
149. Ouyang, X. et al. Potentiation of Th17 cytokines in aging process contributes to the development of colitis. Cell. Immunol. 266, 208–217 (2011).
150. Griffin, G. K. et al. IL-17 and TNF- α Sustain Neutrophil Recruitment during Inflammation through Synergistic Effects on Endothelial Activation. J. Immunol. 188, 6287–6299 (2012).
151. Frasca, D., Diaz, A., Romero, M., Vazquez, T. & Blomberg, B. B. Obesity induces pro-inflammatory B cells and impairs B cell function in old mice. Mech. Ageing Dev. 162, 91–99 (2017).
152. Camell, C. D. et al. Aging Induces an Nlrp3 Inflammasome-Dependent Expansion of Adipose B Cells That Impairs Metabolic Homeostasis. Cell Metab. 30, 1024–1039.e6 (2019).
153. Souyris, M. et al. TLR7 escapes X chromosome inactivation in immune cells. Sci. Immunol. 3, (2018).
154. Song, N. & Li, T. Regulation of NLRP3 inflammasome by phosphorylation. Frontiers in Immunology vol. 9 2305 (2018).
155. Khan, S., Tsai, S. & Winer, D. A. Adipose Tissue B Cells Come of Age: The AABs of Fat Inflammation. Cell Metabolism vol. 30 997–999 (2019).
156. McDonnell, M. E. et al. B Lymphocytes in Human Subcutaneous Adipose Crown-Like Structures. Obesity 20, 1372–1378 (2012).
157. Dagdeviren, S. et al. IL-10 prevents aging-associated inflammation and insulin resistance in skeletal muscle. FASEB J. 31, 701–710 (2017).
158. Garg, S. K. et al. Aging is associated with increased regulatory T-cell function. Aging Cell 13, 441–448 (2014).
159. Lazuardi, L. et al. Age-related loss of naïve T cells and dysregulation of T-cell/B-cell interactions in human lymph nodes. Immunology 114, 37–43 (2005).
160. Olkhanud, P. B. et al. Tumor-evoked regulatory B cells promote breast cancer metastasis by converting resting CD4⁺ T cells to T-regulatory cells. Cancer Res. 71, 3505–3515 (2011).
161. Dang, L. et al. Aging and PD-1 & PD-L1 gene expression: markers of immunosenescence? EHA Library. BRON D. Jun 9 2016; 134674. EHA Libr. (2016).
162. Vadasz, Z., Haj, T., Kessel, A. & Toubi, E. Age-related autoimmunity. BMC Medicine vol. 11 94 (2013).
163. Kline, K. A. & Bowdish, D. M. E. Infection in an aging population. Current Opinion in Microbiology vol. 29 63–67 (2016).

164. Yende, S. et al. Epidemiology and long-term clinical and biologic risk factors for pneumonia in community-dwelling older Americans analysis of three cohorts. *Chest* 144, 1008–1017 (2013).
165. Thompson, W. W. et al. Mortality associated with influenza and respiratory syncytial virus in the United States. *J. Am. Med. Assoc.* 289, 179–186 (2003).
166. Sakata-Kaneko, S., Wakatsuki, Y., Matsunaga, Y., Usui, T. & Kita, T. Altered Th1/Th2 commitment in human CD4+ T cells with ageing. *Clin. Exp. Immunol.* 120, 267–273 (2000).
167. Saurwein-Teissl, M. et al. Lack of Antibody Production Following Immunization in Old Age: Association with CD8 + CD28 – T Cell Clonal Expansions and an Imbalance in the Production of Th1 and Th2 Cytokines . *J. Immunol.* 168, 5893–5899 (2002).
168. Frasca, D., Diaz, A., Romero, M., Ferracci, F. & Blomberg, B. B. MicroRNAs miR-155 and miR-16 Decrease AID and E47 in B Cells from Elderly Individuals. *J. Immunol.* 195, 2134–2140 (2015).
169. Nipper, A. J., Smithey, M. J., Shah, R. C., Canaday, D. H. & Landay, A. L. Diminished antibody response to influenza vaccination is characterized by expansion of an age-associated B-cell population with low PAX5. *Clin. Immunol.* 193, 80–87 (2018).
170. Henry, C. et al. Influenza Virus Vaccination Elicits Poorly Adapted B Cell Responses in Elderly Individuals. *Cell Host Microbe* 25, 357–366.e6 (2019).
171. Gensous, N. et al. Responders and non-responders to influenza vaccination: A DNA methylation approach on blood cells. *Exp. Gerontol.* 105, 94–100 (2018).
172. Zimmermann, M. T. et al. System-wide associations between DNA-methylation, gene expression, and humoral immune response to influenza vaccination. *PLoS One* 11, (2016).
173. Frasca, D., Diaz, A., Romero, M. & Blomberg, B. B. Human peripheral late/exhausted memory B cells express a senescent-associated secretory phenotype and preferentially utilize metabolic signaling pathways. *Exp. Gerontol.* 87, 113–120 (2017).
174. Frasca, D., Diaz, A., Romero, M., Thaller, S. & Blomberg, B. B. Metabolic requirements of human pro-inflammatory B cells in aging and obesity. *PLoS One* 14, (2019).
175. Johnson, J. L. et al. The Transcription Factor T-bet Resolves Memory B Cell Subsets with Distinct Tissue Distributions and Antibody Specificities in Mice and Humans. *Immunity* 52, 842–855.e6 (2020).
176. Sosa-Hernández, V. A. et al. B Cell Subsets as Severity-Associated Signatures in COVID-19 Patients. *Front. Immunol.* 11, (2020).
177. Boyd, A. R. & Orihuela, C. J. Dysregulated inflammation as a risk factor for pneumonia in the elderly. *Aging and Disease* vol. 2 487–500 (2011).
178. Hampe, C. S. B Cells in Autoimmune Diseases. *Scientifica (Cairo)*. 2012, (2012).
179. Attanasio, R., Brasky, K. M. & Robbins, S. H. Age-related autoantibody production in a nonhuman primate model. *Clin. Exp. Immunol.* 123, 361–365 (2001).
180. Rakhmanov, M. et al. Circulating CD21low B cells in common variable immunodeficiency resemble tissue homing, innate-like B cells. *Proc. Natl. Acad. Sci. U. S. A.* 106, 13451–13456 (2009).
181. Adlowitz, D. G. et al. Expansion of Activated Peripheral Blood Memory B Cells in Rheumatoid Arthritis, Impact of B Cell Depletion Therapy, and Biomarkers of Response. *PLoS One* 10, e0128269 (2015).
182. Whitacre, C. C. Sex differences in autoimmune disease. *Nature Immunology* vol. 2 777–780 (2001).
183. Wehr, C. et al. A new CD21low B cell population in the peripheral blood of patients with SLE. *Clin. Immunol.* 113, 161–171 (2004).
184. Duffy, L. & O'Reilly, S. C. Toll-like receptors in the pathogenesis of autoimmune diseases: Recent and emerging translational developments. *ImmunoTargets and Therapy* vol. 5 69–80 (2016).
185. Santiago-Raber, M. L. et al. Critical role of TLR7 in the acceleration of systemic lupus erythematosus in TLR9-deficient mice. *J. Autoimmun.* 34, 339–348 (2010).
186. Barrat, F. J. et al. Nucleic acids of mammalian origin can act as endogenous ligands for Toll-like receptors and may promote systemic lupus erythematosus. *J. Exp. Med.* 202, 1131–1139 (2005).
187. Nickerson, K. M. et al. TLR9 Regulates TLR7- and MyD88-Dependent Autoantibody Production and Disease in a Murine Model of Lupus. *J. Immunol.* 184, 1840–1848 (2010).
188. Nickerson, K. M. et al. TLR9 Promotes Tolerance by Restricting Survival of Anergic Anti-DNA B Cells, Yet Is Also Required for Their Activation. *J. Immunol.* 190, 1447–1456 (2013).
189. Srikakulapu, P. & McNamara, C. A. B cells and atherosclerosis. *American Journal of Physiology - Heart and Circulatory Physiology* vol. 312 H1060–H1067 (2017).
190. Libby, P., Lichtman, A. H. & Hansson, G. K. Immune Effector Mechanisms Implicated in Atherosclerosis: From Mice to Humans. *Immunity* vol. 38 1092–1104 (2013).
191. Nakashima, Y., Fujii, H., Sumiyoshi, S., Wight, T. N. & Sueishi, K. Early human atherosclerosis: Accumulation of lipid and proteoglycans in intimal thickenings followed by macrophage infiltration. *Arterioscler. Thromb. Vasc. Biol.* 27, 1159–1165 (2007).
192. Briley-Saebo, K. C. et al. In vivo detection of oxidation-specific epitopes in atherosclerotic lesions using biocompatible manganese molecular magnetic imaging probes. *J. Am. Coll. Cardiol.* 59, 616–626 (2012).
193. Di Pietro, N., Formoso, G. & Pandolfi, A. Physiology and pathophysiology of oxLDL uptake by vascular wall cells in atherosclerosis. *Vascular Pharmacology* vol. 84 1–7 (2016).
194. Wolf, D. & Ley, K. Immunity and Inflammation in Atherosclerosis. *Circulation Research* vol. 124 315–327 (2019).

195. Palinski, W. et al. Cloning of Monoclonal Autoantibodies to Epitopes of Oxidized Lipoproteins from Apolipoprotein E-deficient Mice Demonstration of Epitopes of Oxidized Low Density Lipoprotein in Human Plasma modified lipo-proteins • autoantibodies • atherosclerosis • immune system. *J. Clin. Invest.* vol. 98 (1996).
196. Caligiuri, G., Nicoletti, A., Poirier, B. & Hansson, G. K. Protective immunity against atherosclerosis carried by B cells of hypercholesterolemic mice. *J. Clin. Invest.* 109, 745 (2002).
197. Tay, C. et al. B-cell-specific depletion of tumour necrosis factor alpha inhibits atherosclerosis development and plaque vulnerability to rupture by reducing cell death and inflammation. doi:10.1093/cvr/cvv186.
198. Ait-Oufella, H. et al. B cell depletion reduces the development of atherosclerosis in mice. *J. Exp. Med.* 207, 1579–1587 (2010).
199. Winkels, H. et al. Atlas of the immune cell repertoire in mouse atherosclerosis defined by single-cell RNA-sequencing and mass cytometry. *Circ. Res.* 122, 1675–1688 (2018).
200. Douna, H. & Kuiper, J. Novel B-cell subsets in atherosclerosis. *Current Opinion in Lipidology* vol. 27 493–498 (2016).
201. Tsiatoulas, D., Gruber, S. & Binder, C. J. B-1 cell immunoglobulin directed against oxidation-specific epitopes. *Front. Immunol.* 3, (2012).
202. Gruber, S. et al. Sialic Acid-Binding Immunoglobulin-like Lectin G Promotes Atherosclerosis and Liver Inflammation by Suppressing the Protective Functions of B-1 Cells. *Cell Rep.* 14, 2348–2361 (2016).
203. Kyaw, T. et al. B1a B lymphocytes are atheroprotective by secreting natural IgM that increases IgM deposits and reduces necrotic cores in atherosclerotic lesions. *Circ. Res.* 109, 830–840 (2011).
204. Rosenfeld, S. M. et al. B-1b Cells Secrete Atheroprotective IgM and Attenuate Atherosclerosis. *Circ. Res.* 117, e28–e39 (2015).
205. Hilgendorf, I. et al. Innate response activator b cells aggravate atherosclerosis by stimulating t helper-1 adaptive immunity. *Circulation* 129, 1677–1687 (2014).
206. Robbins, C. S. et al. Extramedullary hematopoiesis generates Ly-6C high monocytes that infiltrate atherosclerotic lesions. *Circulation* 125, 364–374 (2012).
207. Kyaw, T. et al. Conventional B2 B Cell Depletion Ameliorates whereas Its Adoptive Transfer Aggravates Atherosclerosis. *J. Immunol.* 185, 4410–4419 (2010).
208. Kyaw, T. et al. Depletion of b2 but not b1a b cells in baff receptor-deficient apoe ^{-/-} mice attenuates atherosclerosis by potentially ameliorating arterial inflammation. *PLoS One* 7, (2012).
209. Sage, A. P. et al. BAFF receptor deficiency reduces the development of atherosclerosis in mice—brief report. *Arterioscler. Thromb. Vasc. Biol.* 32, 1573–1576 (2012).
210. Kyaw, T. et al. BAFF Receptor mAb Treatment Ameliorates Development and Progression of Atherosclerosis in Hyperlipidemic ApoE^{-/-} Mice. *PLoS One* 8, e60430 (2013).
211. Tsiatoulas, D. et al. B Cell-Activating Factor Neutralization Aggravates Atherosclerosis. *Circulation* 138, 2263–2273 (2018).
212. Tay, C. et al. Follicular B Cells Promote Atherosclerosis via T Cell-Mediated Differentiation Into Plasma Cells and Secreting Pathogenic Immunoglobulin G. *Arterioscler. Thromb. Vasc. Biol.* 38, e71–e84 (2018).
213. Douna, H. et al. B- And T-lymphocyte attenuator stimulation protects against atherosclerosis by regulating follicular B cells. *Cardiovasc. Res.* 116, 295–305 (2020).
214. Nus, M. et al. Marginal zone B cells control the response of follicular helper T cells to a high-cholesterol diet. *Nat. Med.* 23, 601–610 (2017).
215. Strom, A. C. et al. B regulatory cells are increased in hypercholesterolaemic mice and protect from lesion development via IL-10. *Thromb. Haemost.* 114, 835–847 (2015).
216. Douna, H. et al. Bidirectional effects of IL-10⁺ regulatory B cells in Ldlr^{-/-} mice. *Atherosclerosis* 280, 118–125 (2019).
217. Khan, A. R. et al. PD-L1hi B cells are critical regulators of humoral immunity. *Nat. Commun.* 6, (2015).
218. Lundy, S. K. & Fox, D. A. Reduced Fas ligand-expressing splenic CD5⁺ B lymphocytes in severe collagen-induced arthritis. *Arthritis Res. Ther.* 11, (2009).
219. Depuydt, M. A. C. et al. Microanatomy of the Human Atherosclerotic Plaque by Single-Cell Transcriptomics. *Circ. Res.* 127, 1437–1455 (2020).
220. Wirka, R. C. et al. Atheroprotective roles of smooth muscle cell phenotypic modulation and the TCF21 disease gene as revealed by single-cell analysis. *Nat. Med.* 25, 1280–1289 (2019).
221. Fernandez, D. M. et al. Single-cell immune landscape of human atherosclerotic plaques. *Nat. Med.* 25, 1576–1588 (2019).
222. Winkels, H. et al. Atlas of the immune cell repertoire in mouse atherosclerosis defined by single-cell RNA-sequencing and mass cytometry. *Circ. Res.* 122, 1675–1688 (2018).
223. van der Heijden, T. et al. NLRP3 Inflammasome Inhibition by MCC950 Reduces Atherosclerotic Lesion Development in Apolipoprotein E-Deficient Mice—Brief Report. *Arterioscler. Thromb. Vasc. Biol.* 37, 1457–1461 (2017).
224. Kim, K. et al. Transcriptome analysis reveals nonfoamy rather than foamy plaque macrophages are proinflammatory in atherosclerotic murine models. *Circ. Res.* 123, 1127–1142 (2018).
225. Srikakulapu, P. et al. Perivascular adipose tissue harbors atheroprotective IgM-producing B cells. *Front. Physiol.* 8, 719 (2017).
226. Srikakulapu, P. et al. Artery tertiary lymphoid organs control multilayered territorialized atherosclerosis B-cell responses in Aged ApoE^{-/-} mice. *Arterioscler. Thromb. Vasc. Biol.* 36, 1174–1185 (2016).
227. Hu, D. et al. Artery Tertiary Lymphoid Organs Control Aorta Immunity and Protect against Atherosclerosis via Vascular Smooth Muscle Cell Lymphotoxin β Receptors. *Immunity* 42, 1100–1115 (2015).

228. Mohanta, S. K. et al. Artery tertiary lymphoid organs contribute to innate and adaptive immune responses in advanced mouse atherosclerosis. *Circulation Research* vol. 114 1772–1787 (2014).
229. Petes, C., Odoardi, N. & Gee, K. The Toll for trafficking: Toll-like receptor 7 delivery to the endosome. *Frontiers in Immunology* vol. 8 1 (2017).
230. Van Vré, E. A., Ait-Oufella, H., Tedgui, A. & Mallat, Z. Apoptotic cell death and efferocytosis in atherosclerosis. *Arterioscler. Thromb. Vasc. Biol.* 32, 887–893 (2012).
231. Akunuru, S. & Geiger, H. Aging, Clonality, and Rejuvenation of Hematopoietic Stem Cells. *Trends in Molecular Medicine* vol. 22 701–712 (2016).
232. Martins, R., Lithgow, G. J. & Link, W. Long live FOXO: unraveling the role of FOXO proteins in aging and longevity. *Aging Cell* 15, 196 (2016).
233. Miyamoto, K. et al. Foxo3a is essential for maintenance of the hematopoietic stem cell pool. *Cell Stem Cell* 1, 101–112 (2007).
234. Tothova, Z. et al. FoxOs are critical mediators of hematopoietic stem cell resistance to physiologic oxidative stress. *Cell* 128, 325–339 (2007).
235. Florian, M. C. et al. CDC42 activity regulates hematopoietic stem cell aging and rejuvenation. *Cell Stem Cell* 10, 520 (2012).
236. Leins, H. et al. Aged murine hematopoietic stem cells drive aging-associated immune remodeling. *Blood* 132, 565–576 (2018).
237. Edwards, J. C. W. et al. Efficacy of B-Cell–Targeted Therapy with Rituximab in Patients with Rheumatoid Arthritis. *N. Engl. J. Med.* 350, 2572–2581 (2004).
238. Gerlag, D. M. et al. Effects of B-cell directed therapy on the preclinical stage of rheumatoid arthritis: the PRAIRI study. *Ann. Rheum. Dis.* 78, 179–185 (2019).
239. Airas, L. et al. Rituximab in the treatment of multiple sclerosis in the Hospital District of Southwest Finland. *Mult. Scler. Relat. Disord.* 40, 101980 (2020).
240. Novikova, D. S., Popkova, T. V & Nasonov, E. L. The Effect of Anti-B-cell Therapy on the Development of Atherosclerosis in Patients with Rheumatoid Arthritis. *Curr. Pharm. Des.* 18, 1512–1518 (2012).
241. Kim, D. & Park, D. Deep sequencing of B cell receptor repertoire. *BMB Reports* vol. 52 540–547 (2019).
242. Zheng, Y. et al. A human circulating immune cell landscape in aging and COVID-19. *Protein Cell* 11, 740–770 (2020).
243. Lorenzo, C. et al. ALDH4A1 is an atherosclerosis auto-antigen targeted by protective antibodies. *Nature* 589, (2021).
244. Danger, R., Braza, F., Giral, M., Soullillou, J. P. & Brouard, S. MicroRNAs, major players in B cells homeostasis and function. *Frontiers in Immunology* vol. 5 98 (2014).
245. Zhang, Y. & Good-Jacobson, K. L. Epigenetic regulation of B cell fate and function during an immune response. *Immunological Reviews* vol. 288 75–84 (2019).
246. Zan, H. & Casali, P. Editorial: Epigenetics of B cells and antibody responses. *Frontiers in Immunology* vol. 6 656 (2016).

