



Universiteit  
Leiden

The Netherlands

## The aging B cell landscape in atherosclerosis

Mol, J. de

### Citation

Mol, J. de. (2025, December 11). *The aging B cell landscape in atherosclerosis*. Retrieved from <https://hdl.handle.net/1887/4285092>

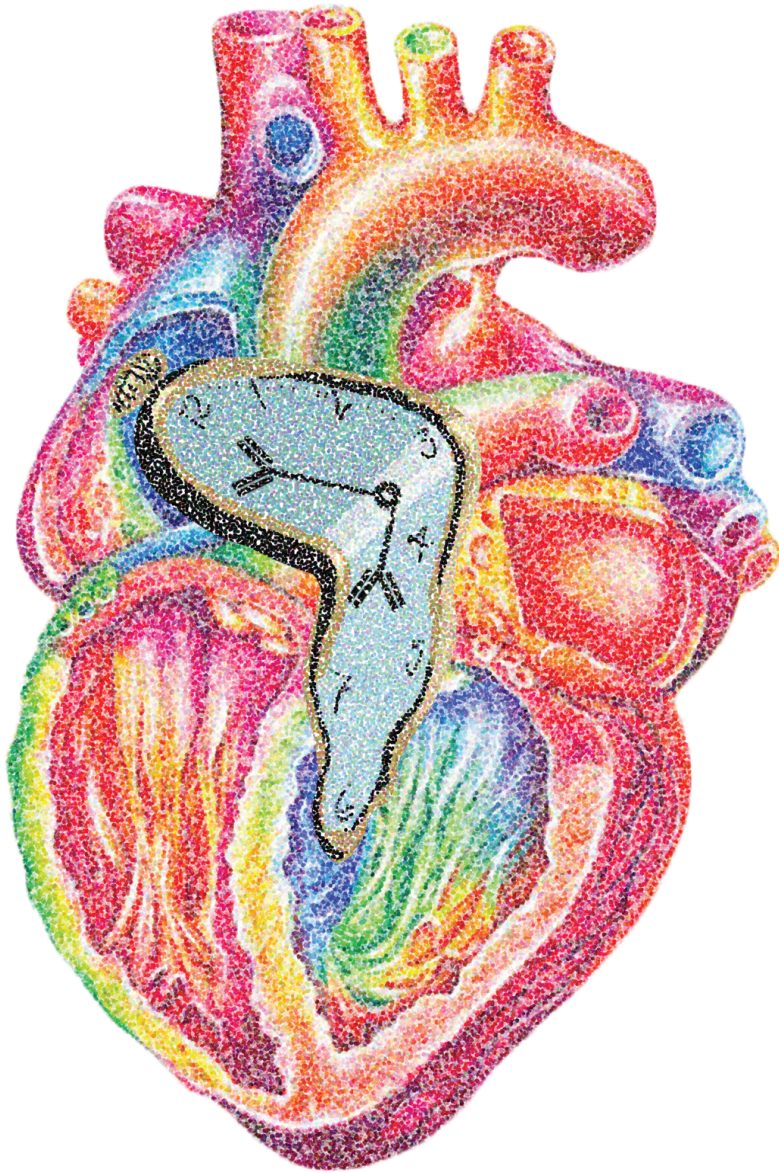
Version: Publisher's Version

License: [Licence agreement concerning inclusion of doctoral thesis in the Institutional Repository of the University of Leiden](#)

Downloaded from: <https://hdl.handle.net/1887/4285092>

**Note:** To cite this publication please use the final published version (if applicable).

# The aging B cell landscape in atherosclerosis



Jill de Mol