



Universiteit  
Leiden  
The Netherlands

## **Collaborative meaning-making: the emergence of novel languages in humans, machines, and human-machine interactions**

Kouwenhoven, T.

### **Citation**

Kouwenhoven, T. (2025, October 30). *Collaborative meaning-making: the emergence of novel languages in humans, machines, and human-machine interactions*. *SIKS Dissertation Series*. Retrieved from <https://hdl.handle.net/1887/4281976>

Version: Publisher's Version

License: [Licence agreement concerning inclusion of doctoral thesis in the Institutional Repository of the University of Leiden](#)

Downloaded from: <https://hdl.handle.net/1887/4281976>

**Note:** To cite this publication please use the final published version (if applicable).

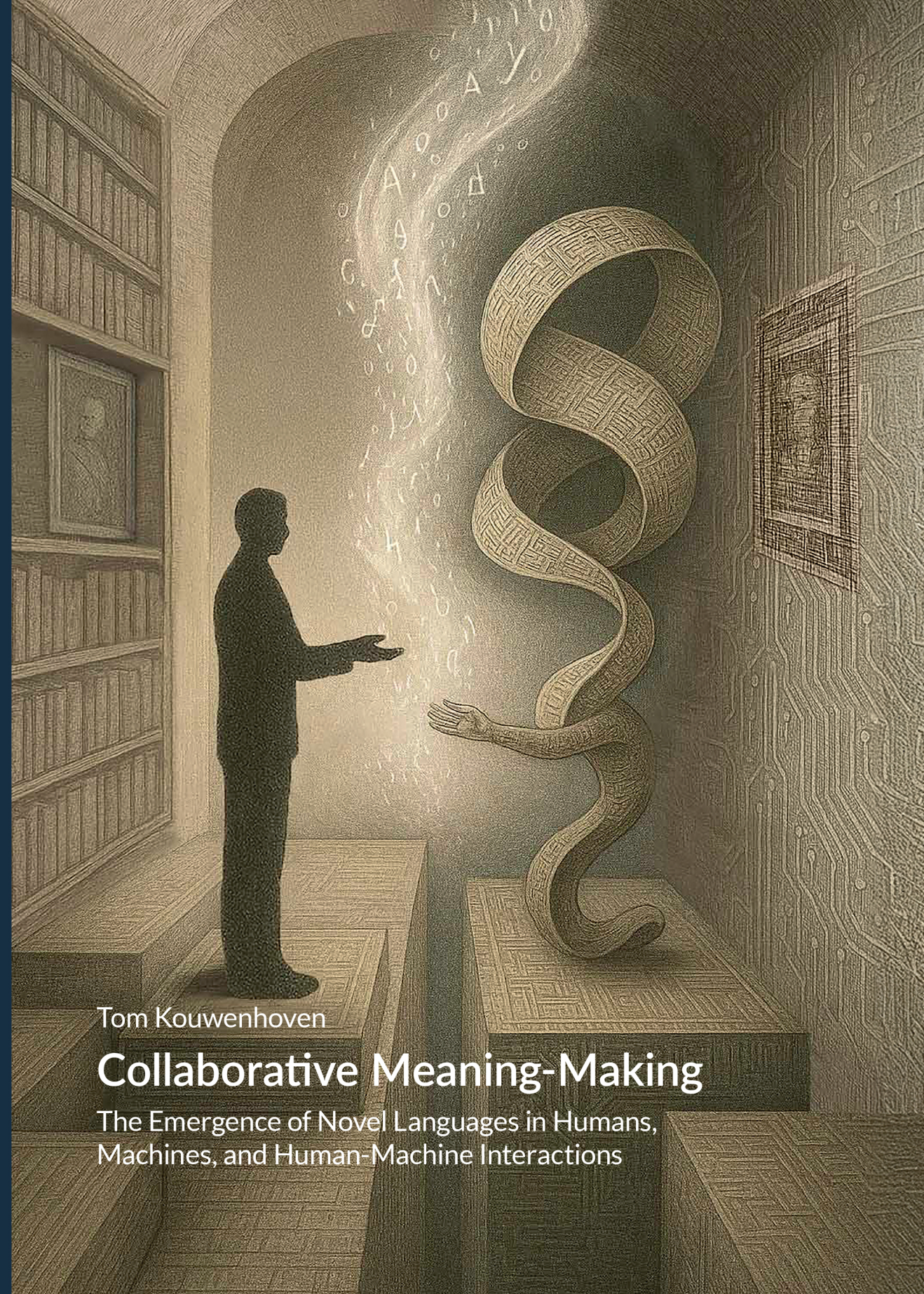
Humans share meaning through language. Over time, repeated interactions have shaped languages into forms that match our cognitive preferences, making them structured, expressive, easy to learn, and ultimately, meaningful.

Today, large language models as artificial minds have become proficient new language users too. Though they differ from humans in key respects, they use languages in ways that increasingly mirror the dynamics of human communication.

By studying both humans and artificial models of language in interactive experimental setups, this dissertation aims to uncover how these different kinds of minds create, adapt, and share meaning.

Tom Kouwenhoven

Collaborative Meaning-Making



Tom Kouwenhoven

## Collaborative Meaning-Making

The Emergence of Novel Languages in Humans, Machines, and Human-Machine Interactions