



Universiteit  
Leiden  
The Netherlands

## Being deaf at the playground: the effects of hearing loss on children's social participation

de Sousa Da Silva, B.M.

### Citation

De Sousa Da Silva, B. M. (2025, February 12). *Being deaf at the playground: the effects of hearing loss on children's social participation*. Retrieved from <https://hdl.handle.net/1887/4180254>

Version: Publisher's Version

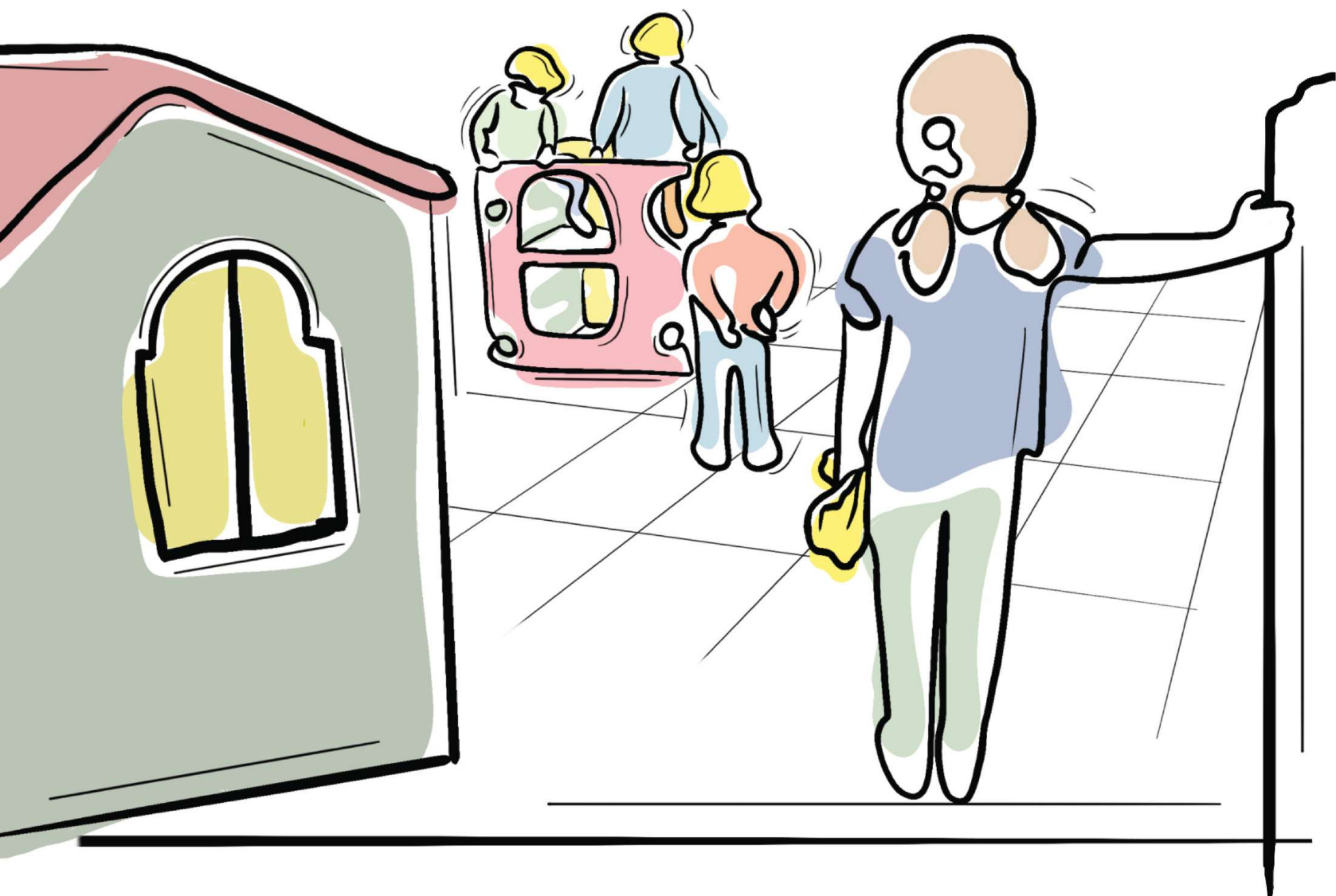
License: [Licence agreement concerning inclusion of doctoral thesis in the Institutional Repository of the University of Leiden](#)

Downloaded from: <https://hdl.handle.net/1887/4180254>

**Note:** To cite this publication please use the final published version (if applicable).

# BEING DEAF AT THE PLAYGROUND

The effects of hearing loss on children's  
social participation



**Brenda M.S. da Silva**



