



Universiteit  
Leiden  
The Netherlands

## Insight into the pathophysiology of cardiometabolic diseases using multiple omics approaches

Wang, W.

### Citation

Wang, W. (2024, November 27). *Insight into the pathophysiology of cardiometabolic diseases using multiple omics approaches*. Retrieved from <https://hdl.handle.net/1887/4169999>

Version: Publisher's Version

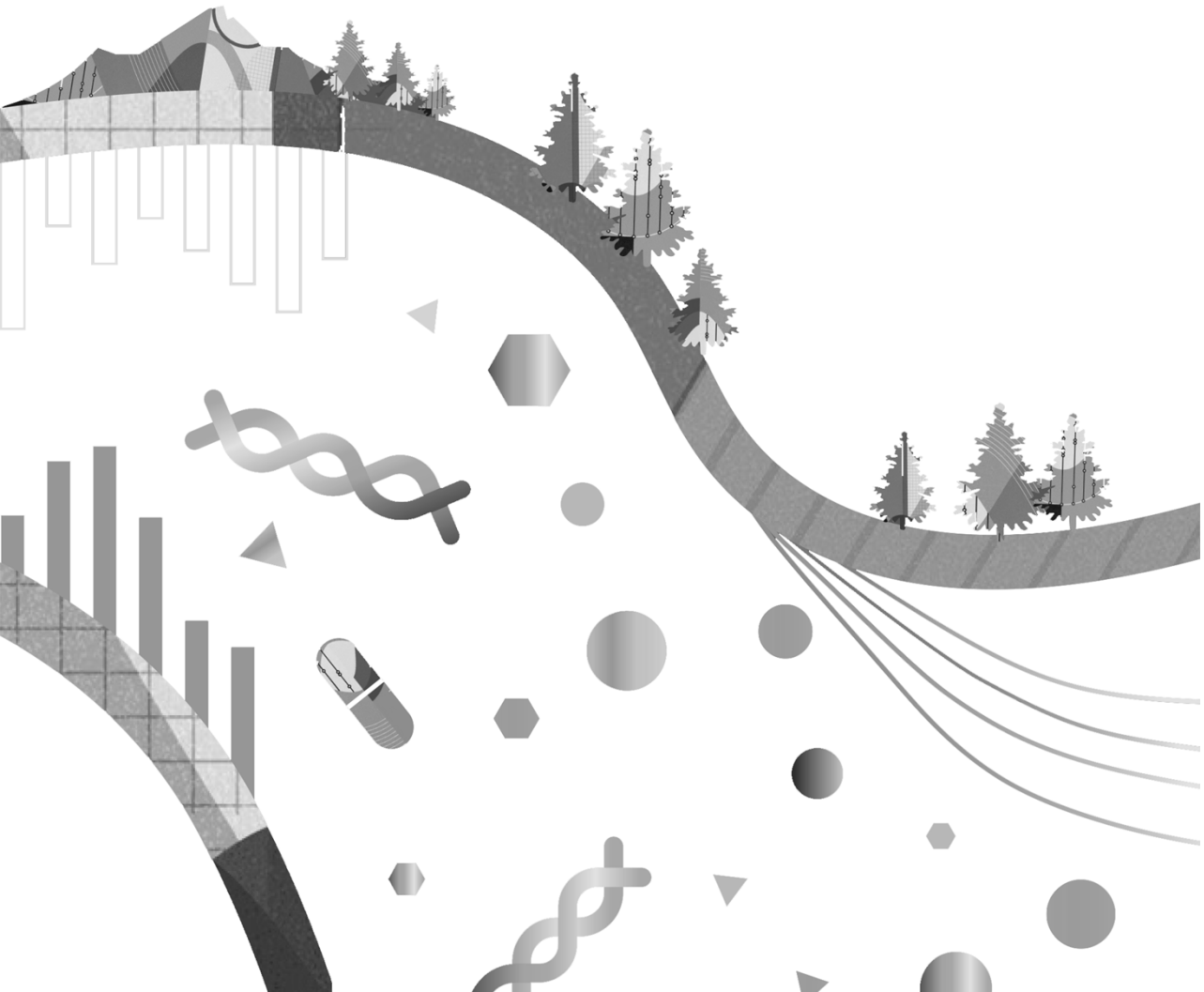
License: [Licence agreement concerning inclusion of doctoral thesis in the Institutional Repository of the University of Leiden](#)

Downloaded from: <https://hdl.handle.net/1887/4169999>

**Note:** To cite this publication please use the final published version (if applicable).

# Part I

## Insulin Sensitivity





# Chapter 2

## Differential insulin sensitivity of NMR-based metabolomics measures in a two-step hyperinsulinemic euglycemic clamp study

Wenyi Wang, Ko Willems van Dijk, Carolien A Wijsman, Maarten P Rozing, Simon P Mooijaart, Marian Beekman, P Eline Slagboom, J. Wouter Jukema, Raymond Noordam, Diana van Heemst

*Metabolomics* (2021) 10.1007

The supplemental information for this paper is available online at <https://drive.google.com/drive/folders/1UoSstJZtu2ylarbtkhn6Kmr3rz68hhSu?usp=sharing>

## Abstract

**Background:** Insulin is the key regulator of glucose metabolism, but it is difficult to dissect direct insulin from glucose-induced effects. We aimed to investigate the effects of hyperinsulemia on metabolomic measures under euglycemic conditions in nondiabetic participants.

**Methods:** We assessed concentrations of 151 metabolomic measures throughout a two-step hyperinsulinemic euglycemic clamp procedure. We included 24 participants (50% women, mean age=62 [s.d.=4.2] years) and metabolomic measures were assessed under baseline, low-dose (10 mU/m<sup>2</sup>/min) and high-dose (40 mU/m<sup>2</sup>/min) insulin conditions. The effects of low- and high-dose insulin infusion on metabolomic measures were analyzed using linear mixed-effect models for repeated measures.

**Results:** After low-dose insulin infusion, 90 metabolomic measures changed in concentration ( $p < 1.34 \times 10^{-4}$ ), among which glycerol (beta [Confidence Interval] = -1.41 [-1.54, -1.27] s.d.,  $p = 1.28 \times 10^{-95}$ ) and three-hydroxybutyrate (-1.22 [-1.36, -1.07] s.d.,  $p = 1.44 \times 10^{-61}$ ) showed largest effect sizes. After high-dose insulin infusion, 121 metabolomic measures changed in concentration, among which branched-chain amino acids showed the largest additional decrease compared with low-dose insulin infusion (e.g., Leucine, -1.78 [-1.88, -1.69] s.d.,  $P = 2.7 \times 10^{-295}$ ). More specifically, after low- and high-dose insulin infusion, the distribution of the lipoproteins shifted towards more LDL-sized particles with decreased mean diameters.

**Conclusion:** Metabolomic measures are differentially insulin sensitive and may thus be differentially affected by the development of insulin resistance. Moreover, our data suggests insulin directly affects metabolomic measures previously associated with increased cardiovascular disease risk.

## Introduction

Insulin is an anabolic peptide hormone secreted by the pancreas in response to increased blood glucose levels to activate various mechanisms that decrease blood glucose levels [1]. Insulin has broad metabolic effects, which include increasing the rate of glycolysis in fat and muscle, decreasing the rate of lipolysis in fat, decreasing the rate of fatty acid oxidation in muscle and liver, and increasing the rate of protein synthesis in fat, muscle and liver tissue [2, 3]. Insulin resistance is a common pathophysiological consequence of obesity in which body cells are unable to raise a potent physiological response to insulin. Insulin resistance precedes the development of type 2 diabetes and is an independent risk factor of cardiovascular disease [4-6].

Insulin sensitivity is frequently assessed on the basis of the ratio between fasting insulin and glucose levels calculated as the homeostatic model assessment for insulin resistance (HOMA-IR) index [7]. However, an abnormal HOMA-IR index does not provide insight into the tissue-specific origin of the insulin resistance. Insulin not only increases glucose uptake by peripheral tissues such as muscle and fat, but insulin also decreases endogenous glucose production through suppression of gluconeogenesis in the liver and both processes may be affected differentially by insulin resistance [8]. A two-step hyperinsulinemic euglycemic clamp analysis was used to assess whole-body insulin sensitivity and a glucose tracer was included to distinguish hepatic and peripheral insulin resistance [9-11]. During the first step a low dose insulin will predominantly act on the liver, whereas during the second step the higher dose will also have a major effect on peripheral tissues such as muscle and fat tissue [12]. Administration of a low insulin dose has thus been used to assess the insulin sensitivity of endogenous glucose production by the liver, while administration of a higher insulin dose has been used to additionally assess the insulin sensitivity of glucose uptake by peripheral tissues, particularly skeletal muscle and fat [13].

Metabolomic measures are thought to reflect the interaction between proteins encoded by the genome and the environment, such as diet and lifestyle [14]. Numerous platforms have become available which can be exploited to determine the concentrations of a plethora of metabolomic measures in cells and body fluids [15, 16]. Metabolomic measures have been performed to characterize the response to glucose administration in individuals with varying levels of insulin sensitivity [17, 18]. These analyses

## Insulin Sensitivity

---

have provided insight into the physiological responses and pathophysiological processes underlying disease [19].

Previous studies have shown that multiple blood metabolomic measures are associated with increased insulin resistance and type 2 diabetes [20, 21]. However, the specific effects of hyperinsulinemia, in the absence of major changes in blood glucose levels, on liver and peripheral tissues in determining blood metabolomic measures have not been fully described in healthy individuals. Therefore, the aim of this study was to investigate the responses of metabolomic measures to two different insulin dosages in a two-step hyperinsulinemic euglycemic clamp study in healthy middle-aged individuals without diabetes mellitus.

# Methods

## Study population and study design

All participants were selected from the Leiden Longevity Study (LLS) [22]. Participants were selected based on the following inclusion criteria: middle-age (50-75 years old), BMI from 22 kg/m<sup>2</sup> to 30 kg/m<sup>2</sup> and living in the proximity of the research center (< 45 minutes by car). Exclusion criteria were: 1) fasting plasma glucose > 6.9 mmol/L [23]; 2) presence of endocrine, renal, hepatic or other significant chronic diseases; 3) use of medication known to influence lipolysis, glucose metabolism or growth hormone secretion; 4) recent weight changes or attempts to lose weight (> 3 kg weight change within last 3 months); 5) smoking; 6) extensive sporting activities (> 10 h per week); 7) inaccessible peripheral veins for intravenous catheter insertion for the assessment by clinical examination and routine laboratory tests. Of the 87 participants that were approached, 17 participants did not fulfill the inclusion criteria (19%), 44 participants refused participation (51%), and 26 participants agreed to participate in the study (30%). Two participants did not finish the study due to medical technical reasons. In total, 24 participants were included in this experiment. Sixteen individuals participated as couples (eight couples) and eight participated as singletons. The Medical Ethical Committee of the Leiden University Medical Center (LUMC) approved the design of the study and all participants gave their written informed consent.

Serum samples were acquired during a two-step hyperinsulinemic euglycemic clamp study (**Figure 1**). All clamp studies started at 8:00 in the morning after an overnight fast. At 08:30 hours (t=0 min), an adjusted primed (17.6 μmol/kg) continuous infusion (0.22 μmol/kg/min) of [6,6-<sup>2</sup>H<sub>2</sub>] glucose (enrichment 99.9%; Cambridge Isotopes, Cambridge, MA, USA) was started and lasted for 360 min. At 9:00 hours (t = 30 min), a primed (1.6 μmol/kg), continuous (0.11 μmol/kg/min) infusion of [<sup>2</sup>H<sub>5</sub>]-glycerol (Cambridge Isotopes) was started and continued throughout the study. After two hours of glucose infusion (t = 120 min), low dose human recombinant insulin (10 mU/m<sup>2</sup>/min, Actrapid, Novo Nordisk Pharma BV, Alphen aan den Rijn, the Netherlands) was infused continuously for 2 hours. After this, high dose insulin (40 mU/m<sup>2</sup>/min) was infused (t = 240 min) for 2 hours. During the insulin infusion, exogenous glucose 20% enriched with 3% [6,6-<sup>2</sup>H<sub>2</sub>]-glucose was infused at a variable rate to maintain the plasma glucose level at approximately 5.0 mmol/L. Blood samples were taken at the start of the

## Insulin Sensitivity

study, and subsequently every 10 minutes from 90 to 120, from 210 to 240 and from 330 to 360 min. All participants underwent a two-step hyperinsulinemic euglycemic protocol and blood samples were taken for the measurement of 151 metabolomic measures (**Figure 1**). For the three examined conditions, we measured 3 samples as the baseline sample (measured at 95, 105 and 115 minutes after the start), 4 samples as low-dose insulin (measured at 210, 220, 230 and 240 minutes after the start), and another 4 samples as high-dose insulin (measured at 330, 340, 350, 360 minutes after the start). The study population and study design have been described in more detail elsewhere [24].

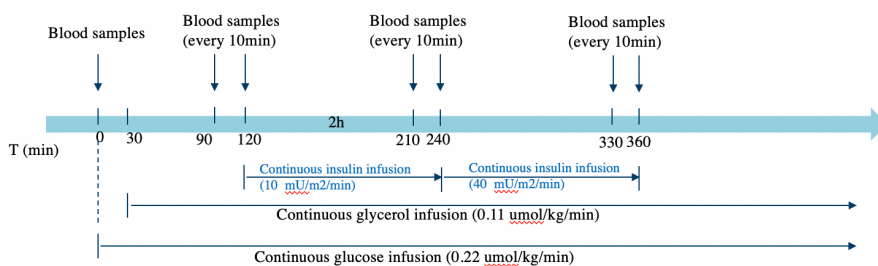


Figure 1 Study design of the two-step hyperinsulinemic euglycemic study

### Metabolomics analysis

151 lipid and metabolite concentrations in fasting serum samples (ratios not included) were measured using a high-throughput proton NMR metabolomics platform (Nightingale Health Ltd., Helsinki, Finland) [25]. This method provides quantification of lipoprotein subclass profiling with lipid concentrations within 14 lipoprotein subclasses. The 14 subclass sizes were defined as follows: extremely large VLDL with particle diameters from 75 nm upwards and a possible contribution of chylomicrons, five VLDL subclasses (average particle diameters of 64.0 nm, 53.6 nm, 44.5 nm, 36.8 nm, and 31.3 nm), IDL (28.6 nm), three LDL subclasses (25.5 nm, 23.0 nm, and 18.7 nm), and four HDL subclasses (14.3 nm, 12.1 nm, 10.9 nm, and 8.7 nm). Within the lipoprotein subclasses the following components were quantified: total cholesterol, total lipids, phospholipids, free cholesterol, cholesteryl esters, and triglycerides. The mean size for VLDL, LDL and HDL particles were calculated by weighting the corresponding subclass diameters with their particle concentrations. Furthermore, the majority of the metabolomic

measures that were determined belong to classes of apolipoproteins, cholesterol, fatty acids, glycerides, phospholipids, amino acids, fluid balance, glycolysis-related metabolites, inflammation, and ketone bodies. Detailed experimentation and applications of the NMR metabolomics platform have been described previously [25], as well as representative coefficients of variations (CVs) for the metabolomic measures [26].

### Statistical analyses

Characteristics of the study population were presented as percentages (for dichotomous variables) and mean values (with standard deviation [s.d.]).

Missing metabolomic measurement data, which was most frequently due to levels below the limit of detection, were imputed by the half of the minimum of the measured value in the dataset for a specific metabolomic measure. During visual inspection of the data, we observed a decrease in the concentration of albumin during the course of the experiment (**Supplementary Figure 1**), which indicates that blood concentrations were increasingly diluted over time of the study period, as found previously [27]. Therefore, with the exception of the VLDL diameter, LDL diameter, HDL diameter, estimated description of fatty acid chain length, and estimated degree of unsaturation (being all not expressed as mmol/L), correction for dilution of metabolomic measure concentrations was done by normalization to the concentration of albumin. This was done by dividing the concentrations of metabolomic measures by the concentration of albumin (consequently concentrations are expressed per mmol/L/mmol/L albumin). After this correction step, data was log-transformed and subsequently standardized (mean=0, s.d.=1) to approximate a normal distribution and to make all metabolomic measures comparable in unit and in magnitude of effect. Outliers were defined as a value with  $> 4$  s.d. from the mean, and were excluded from the dataset for the analyses prior to any further analyses. Taking into account time-dependent within-person variation in concentrations of the metabolomic measures, a linear mixed-effect model for repeated measures was applied to explore the changes in metabolomic measures' concentrations dependent on different insulin infusion doses within individuals (including the difference between two dose groups compared with the baseline measurement and differences between low dose group and high dose group). In order to further explore the insulin sensitivity of branched chain amino acids (BCAA), we calculated the

## Insulin Sensitivity

---

percentage changes of the BCAAs after high dose insulin infusion compared with baseline for all individuals. Subsequently, we assessed the correlation of between the percentage change in BCAAs with glucose infusion rate (GIR), which is a measure of whole-body insulin sensitivity, and with glucose disposal rate (GDR), which is a measure of peripheral insulin sensitivity.

The statistical analyses were conducted in the R software (Version 3.6.2), and subsequent data visualization was performed in either Python (2.7) or using the ggplot2 package in R [28].

We corrected the results for multiple testing using Bonferroni. As conventional Bonferroni correction is too stringent given the high correlations between multiple of the included metabolic measures, we corrected for the number of independent metabolic measures instead, using methodology that has been described before by Li et al [29]. Based on this method, we corrected for 37 independent metabolomic measures. Hence, we considered a P-value of 0.00135 (notably  $0.05/37$ ) the threshold for statistical significance.

# Results

## Characteristics of the study population and metabolomic measures

The characteristics of all participants are shown in **Table 1**. In total, 24 participants comprising 12 women and 12 men were included in this study. These participants were clinically healthy with a mean age of 62 (s.d.=4.2) years, mean body mass index of 25.8 kg/m<sup>2</sup> (s.d.=1.8), mean fasting plasma glucose of 5.0 mmol/L (s.d.=0.5) and mean fasting plasma insulin of 6.2 mU/L (s.d.=2.8). Average values of each metabolomic measure within different dose groups were provided in **Supplementary Table 1**.

**Table 1** Characteristics of study population

Characteristics	Total
N	24
Men, N (%)	12 (50)
Age in years, mean (s.d.)	62.0 (4.2)
Body mass index in kg/m <sup>2</sup> , mean (s.d.)	25.8 (1.8)
Plasma glucose after fasting in mmol/L, mean (s.d.)	5.0 (0.5)
Plasma insulin after fasting in mU/L, mean (s.d.)	6.2 (2.8)

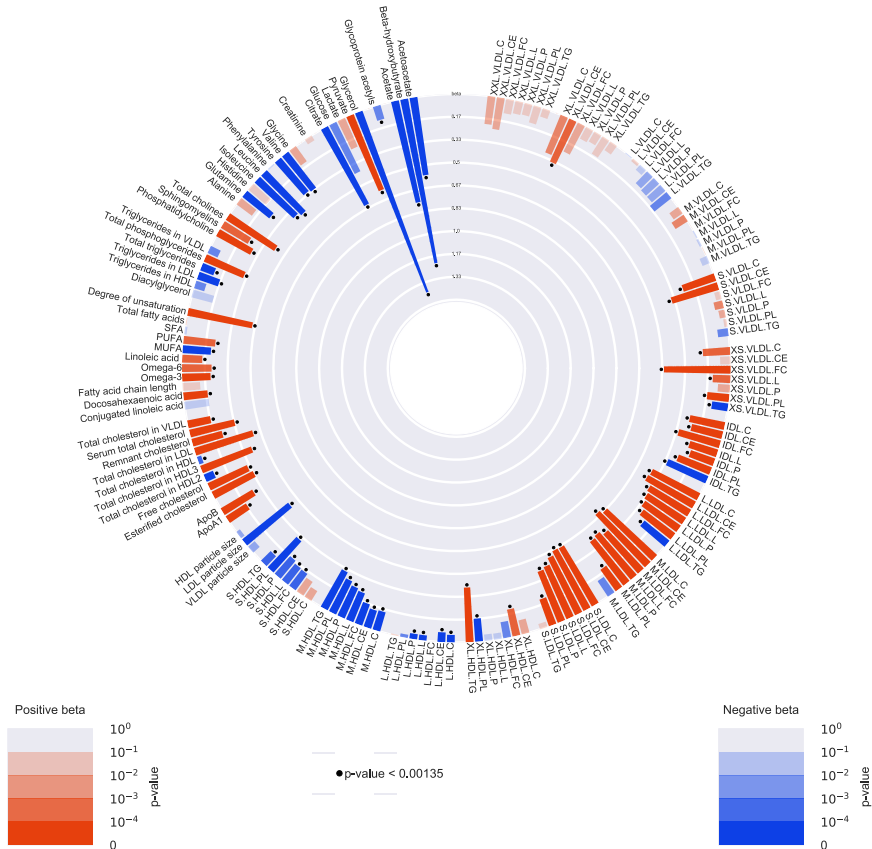
\*Plasma glucose and plasma insulin after fasting were calculated based on 17 participants due to the missing values of 7 participants

## Changes in metabolomic measures at low-dose insulin infusion

The standardized mean differences in metabolomic measures between baseline and low-dose insulin are summarized in **Figure 2**, and presented in more detail in **Supplementary Table 2**. A total of 90 out of the 151 analyzed metabolomic measures significantly changed in concentration after 10 mM insulin infusion. In particular, after infusing low dose insulin for two hours, the concentrations of glycerol and three-hydroxybutyrate were materially decreased with betas of, respectively, -1.41 [-1.54, -1.27] s.d. ( $P=1.28e^{-95}$ ), and -1.22 [-1.36, -1.07] s.d. ( $P=1.44e^{-61}$ ). Other metabolomic measures that majorly

## Insulin Sensitivity

decreased in concentration during this phase of the experiment included acetate (beta= -0.76 [-0.88, -0.63];  $P=1.52e^{-32}$ ), citrate (beta= -0.64 [-0.82, -0.46] s.d.;  $P=6.95e^{-12}$ ), acetoacetate (beta= -0.57 [-0.71, -0.43] s.d.;  $P=4.68e^{-15}$ ), LDL diameter (beta= -0.43 [-0.56, -0.30] s.d.;  $P=2.71e^{-11}$ ) and medium-sized HDL. In contrast, the concentration of pyruvate, and the degree of fatty acid unsaturation increased with betas of 0.59 [0.40, 0.78] s.d. ( $P=7.46e^{-10}$ ) and 0.48 [0.38, 0.57] s.d. ( $P=1.53e^{-22}$ ) respectively. In addition, the majority of LDL-sized particles and the concentration of apo-lipoprotein B (ApoB) increased in concentration after low-dose insulin infusion.

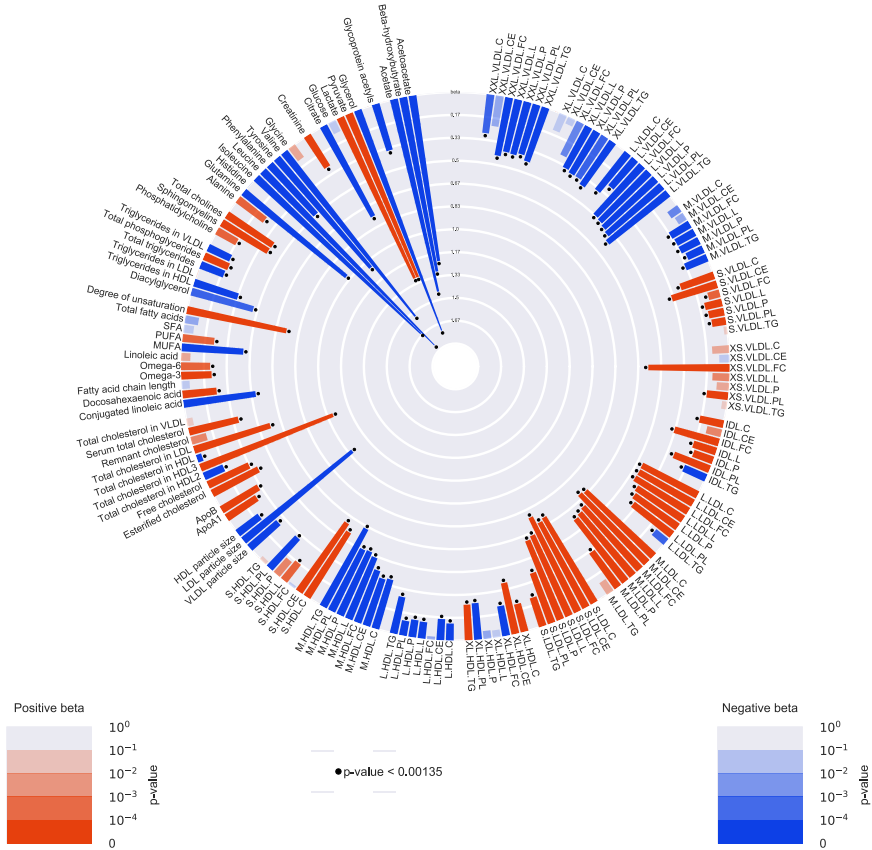


**Figure 2** Circular plot of metabolomic measures after the low dose insulin infusion compared with baseline. Red bars stand for positive betas and blue bars stand for negative betas. The floating dots represents the significance of betas with standard of P-value < 0.00135.

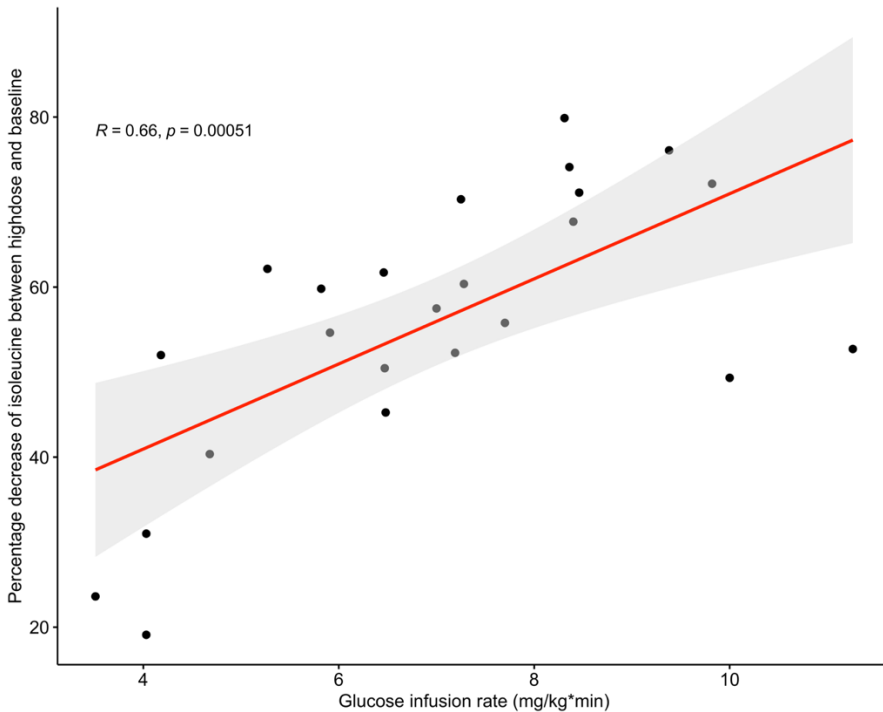
### Changes in metabolomic measures at high-dose insulin infusion

**Figure 3** summarizes the mean changes of metabolomic measures after high dose insulin infusion, and **Supplementary Table 3** presents the results in more detail. 121 out of the 151 metabolomic measures changed significantly in concentration with 40 mM insulin infusion compared with the baseline. The concentrations of glycerol, leucine, isoleucine and valine largely decreased with betas of, respectively, -1.72 [-1.85, -1.59] s.d. ( $P=6e^{-142}$ ), -1.78 [-1.88, -1.69] s.d. ( $P=2.7e^{-295}$ ), -1.65 [-1.77, -1.54] s.d. ( $P=3.8e^{-174}$ ) and -1.53 [-1.63, -1.44] s.d. ( $P=6.6e^{-243}$ ) compared with baseline. In addition, the concentrations of acetate, three-hydroxybutyrate, acetoacetate, tyrosine, glutamine and citrate also decreased. The concentrations of medium, large, extra-large and super extra-large VLDL particles and medium HDL and large HDL decreased after the high-dose insulin infusion. The concentration of pyruvate, lactate, total cholesterol in HDL3, and the degree of fatty acid unsaturation increased significantly with betas of, respectively, 1.29[1.10, 1.48] s.d. ( $P=2.15e^{-41}$ ), 1.29 [1.09, 1.49] s.d. ( $P=1.91e^{-37}$ ), 1.04 [0.91, 1.17] s.d. ( $P=1.40e^{-54}$ ) and 0.74 [0.65, 0.84] s.d. ( $P=2.40e^{-51}$ ). The concentrations of almost all LDL-sized particles, small and extra small VLDL and ApoB also increased significantly after the high dose insulin infusion. In addition, LDL diameter decreased.

**Figure 4** showed the percentage changes of isoleucine between high dosage insulin and baseline, which indicated that the magnitude of the changes in isoleucine was correlated with glucose infusion rate. A stronger decrease of isoleucine concentration was found in individuals with higher glucose infusion rates. Similar patterns of change in leucine and valine dependent on the glucose infusion rates were observed (**Supplementary Figures 2 and 3**). Changes in BCAAs at high dose insulin infusion were also positively correlated with glucose disposal rate (GDR) with  $r=0.68$ ,  $p=0.00022$ ,  $r=0.61$ ,  $p=0.0017$ , and  $r=0.5$ ,  $p=0.012$ , for isoleucine, leucine, and valine respectively.



**Figure 3** Circular plot of metabolomic measures after high dose insulin infusion compared with baseline. Red bars stand for positive betas and blue bars stand for negative betas. The floating dots represents the significance of betas with standard of P-value < 0.00135



**Figure 4** Percentage changes of isoleucine in high dose insulin infusion compared with baseline. Black points represent individuals. Red line is regression line and light grey area represent 95% confidence interval.

### Differential changes in metabolomic measures between high and low dose insulin infusion

**Figure 5** shows that 99 metabolomic measures changed significantly after high dose insulin infusion compared with low dose insulin infusion and **Supplementary Table 4** provides the results in detail. Apparent additional decreases were specifically seen in the concentrations of branched-chain amino acids, acetate, tyrosine, acetoacetate, glutamine and LDL diameter. Among these significantly changed metabolomic measures, the largest additional changes of concentrations were in branched-chain amino acids, which decreased with betas of  $-1.39$   $[-1.47, -1.30]$  s.d. ( $P=2.4e^{-244}$ ) for leucine,  $-1.24$   $[-1.35, -1.14]$  s.d. ( $P=1.6e^{-123}$ ) for isoleucine and  $-1.20$   $[-1.27, -1.12]$  s.d. ( $P=5.8e^{-211}$ ) for valine compared with low-dose insulin infusion. Furthermore, the concentrations of acetate, tyrosine, acetoacetate, glutamine, extra-large

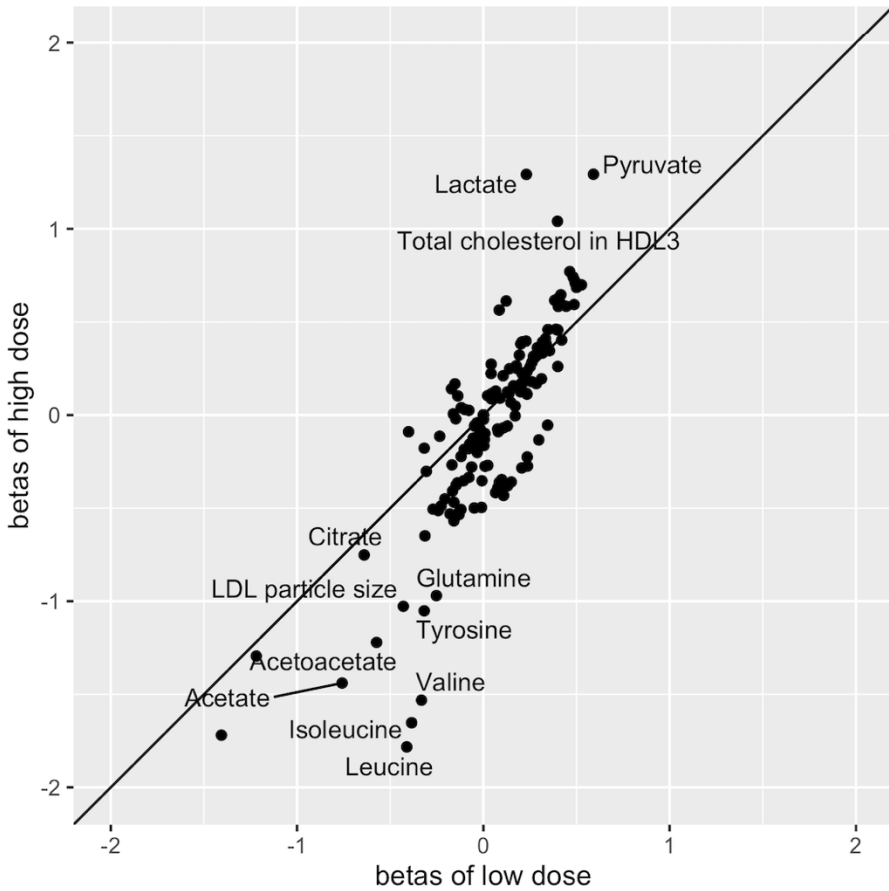
## Insulin Sensitivity

---

and super extra-large VLDL particles also sharply decreased. In contrast, the concentrations of lactate (beta= 1.16 [0.97, 1.35] s.d.;  $P=2.38e^{-33}$ ), pyruvate (beta= 0.98 [0.80, 1.16] s.d.;  $P=1.95e^{-27}$ ) and HDL3C (beta= 0.67[0.54, 0.79] s.d.;  $P=3.72e^{-25}$ ) greatly increased. In addition, LDL diameter further decreased.

Based on the results from the low- and high-dose analyses, a beta-beta plot comparing low-dose insulin infusion and high-dose insulin infusion was generated (**Figure 6**). Metabolomic measures on the diagonal line ( $Y = X$ ) have reached their maximal response already at low-dose insulin infusion, whereas those that deviate from this line show a dose-dependent response. Most notably, leucine, isoleucine, valine and lactate, but also LDL diameter showed a clear additional effect at high-dose insulin infusion beyond that of low-dose insulin infusion.





**Figure 6** Beta-beta plot of high dose insulin infusion versus low dose insulin infusion. Metabolomic measures on the diagonal line have reached their maximal response already at low dose insulin infusion, whereas those that deviate from this line show a dose-dependent response.

## Conclusions and discussion

This study explored the changes of blood metabolomic measures in 24 clinically healthy individuals during a hyperinsulinemic euglycemic clamp study. We found that a large number of metabolomic measures changed significantly in concentration in response to low- and high-dose insulin infusion under euglycemic conditions. A total of 90 out of the 151 analyzed metabolomic measures changed significantly at low-dose insulin infusion, while 121 metabolomic measures changed significantly at high-dose insulin infusion. Some metabolomic measures seemed to have reached their maximum response already at low-dose (10 mU/m<sup>2</sup>/min) insulin infusion, whereas other metabolomic measures showed an additional response at high-dose (40 mU/m<sup>2</sup>/min) insulin infusion. This shows that <sup>1</sup>H-NMR-based metabolomic measures are differentially insulin sensitive.

At low-dose insulin infusion, the largest changes in metabolomic measures comprised glycerol, pyruvate, citrate, three-hydroxybutyrate, acetate, acetoacetate and LDL diameter. These changes are thought to mainly occur via the liver. Low-dose hyperinsulinemia-euglycemia stimulates glycolysis in the liver. This results in the increased production and turnover of pyruvate, which could leak into the circulation [30]. Glycolysis also increases the demand on the mitochondrial citric acid cycle, which requires citrate and this could explain the decrease in citrate. A potential alternative explanation for the observation of the decrease in glycerol after low-dose (10 mU/m<sup>2</sup>/min) insulin infusion is an effect of insulin on inhibiting hormone sensitive lipase which would cause a decrease in adipose tissue lipolysis. It had been shown previously that suppression of lipolysis in adipose tissue is very insulin sensitive, and differences in adipose tissue lipolysis between individuals with type 1 diabetes and healthy controls could be detected at insulin doses as low as 4 mU/m<sup>2</sup>/min [31]. It is a limitation of the current study that, although (tracer) data on the rate of glycerol appearance were available, the insulin dosages applied might not be low enough to accurately assess potential differences in suppression of lipolysis in adipose tissue (and relate these to some of the observed changes in metabolites). After an overnight fast, ketogenesis is activated in the liver to meet the energy demand of the body (in particular the brain) and ketone bodies such as three-hydroxybutyrate, acetate and acetoacetate are formed in this process [32]. After the infusion of glucose and insulin during the clamp procedure, which is performed in the fasted state, the secretion of ketone bodies is acutely inhibited which explains their decreased concentrations [33].

2

At high-dose intravenous insulin infusion, the largest changes in metabolomic measures included not only glycerol, pyruvate, lactate, citrate, three-hydroxybutyrate, acetate, acetoacetate, but also leucine, isoleucine, valine, tyrosine, and glutamine. In addition, all sizes of VLDL particles decreased, all sizes of LDL particles increased and mean LDL diameter decreased. High-dose insulin infusion is thought to affect processes in peripheral tissues such as muscle and fat in addition to processes in the liver. In muscle, insulin promotes the synthesis of proteins and suppresses proteolysis [34], which could explain the observed large decrease in concentrations of amino acids including leucine, isoleucine, valine, tyrosine and glutamine. The observed correlation between percentage changes of BCAAs and glucose infusion rate provides additional evidence that the observed decrease of BCAAs at high dose-insulin infusion are positively related to whole-body insulin sensitivity. In addition to these effects, the decrease of medium, large, extra-large and super extra-large VLDL particles, and the increase of the majority of LDL particles, small VLDL, extra small VLDL and cholesterol concentration are indicative of an increased clearance of triglycerides. Triacylglycerol in the large VLDL particles is hydrolyzed by lipoprotein lipase resulting in the formation of smaller VLDL and LDL [35].

The increased concentration of ApoB at low-dose insulin infusion could be explained by stimulation of de-novo lipogenesis in the liver and an increased VLDL production [36]. Interestingly, high-dose insulin infusion had a more pronounced effect on the lipoprotein profile without additionally affecting the concentration of ApoB. This could be explained by direct or indirect high-dose insulin induced changes in the activity of plasma proteins that affect the interchange of components between lipoproteins in the plasma, such as phospholipid transfer protein (PLTP) and cholesteryl ester transfer protein (CETP) [37, 38].

Multiple of the metabolomic measures that we identify as being insulin dependent in the present study have been described before in relation to cardiovascular disease risk. For example, triglycerides within all lipoproteins have been associated with increased risk of incident myocardial infarction and ischemic stroke [39]. In addition, high cholesterol levels in HDL particles have been associated with a lower risk of developing coronary heart disease, myocardial infarction and ischemic stroke [40]. A main driver of atherosclerotic cardiovascular disease is LDL cholesterol which is increased by low-dose insulin and further increased by high-dose insulin infusion [41]. Additionally, the increase of LDL particle number and the decrease of LDL

particle size have also been associated with increased risk of cardiovascular disease [42]. Both parameters are found to be insulin dose dependent in our study. Moreover, the increase of beta-hydroxybutyrate in circulating blood has been associated with an increased intracranial carotid artery atherosclerosis [43]. Branched-chain amino acid were also identified to be associated with incident cardiovascular disease [44]. The insulin dose dependently increased levels of these cardiovascular-disease risk associated metabolomic measures suggest that increased insulin has atherogenic properties independent of glucose concentrations.

Some metabolomic measures identified to be insulin sensitive in our study have also been identified as potential biomarkers for the risk to develop type 2 diabetes. Specifically, higher levels of the BCAAs (leucine, isoleucine and valine) and the aromatic amino acids (tyrosine and phenylalanine) have been associated with increased risk of type 2 diabetes and have the potential to predict the future development of diabetes [45]. These amino acids were also among the metabolites that showed the largest changes in response to the high dose insulin infusion in our study. These data could be interpreted as indicating that decreased insulin sensitivity of amino acids leucine, isoleucine, valine, tyrosine and phenylalanine are predictive for the increased risk of developing type 2 diabetes. However, it has also been demonstrated by Mendelian randomization analysis that higher levels of the branched chain amino acids themselves are causally associated with the risk of type 2 diabetes [46]. Whether increased levels of branched chain amino acids are both consequence and cause of insulin resistance / type 2 diabetes remains to be established.

Our study has provided insight into the direct effects of insulin on changes of metabolomic measures in apparently healthy people under euglycemic conditions. A limitation of this study is the limited sample size, which does not allow specific subgroup analyses. In addition, the age of participants ranged from 50 to 75 years old, which means the results might not apply to younger ages. Moreover, it is important to note that the present study population was selected based on their health and partly on their propensity to become long-lived. This might have introduced bias in our study.

In conclusion, the majority of the plasma metabolomic measures determined by an 1H-NMR metabolomics platform are sensitive to insulin and a large fraction of these responses are insulin dose-dependent. It thus seems likely that some of these metabolomics measures will be differentially affected by

## Insulin Sensitivity

---

the development of insulin resistance. Since low- and high-dose insulin levels are assumed to target, respectively, the liver and the liver plus peripheral organs (i.e. muscle and fat), our data provide insight into the direct role of insulin on specific processes in the liver and the peripheral tissues. Moreover, our data showed insulin-specific effects on metabolomic measures such as LDL particle number and size, which have previously associated with an increased risk of cardiovascular disease. The implications of this study are to not only avoid the chronic hyperinsulinemia that is associated with insulin resistance, but also to avoid frequent hyperinsulinemia that is caused by frequent snacking as a means to reduce exposure to an atherogenic lipoprotein profile.

## Reference

- [1]Tokarz VL, MacDonald PE, Klip A (2018) The cell biology of systemic insulin function. *J Cell Biol* 217(7): 2273-2289. 10.1083/jcb.201802095
- [2]Dimitriadis G, Mitrou P, Lambadiari V, Maratou E, Raptis SA (2011) Insulin effects in muscle and adipose tissue. *Diabetes Res Clin Pract* 93 Suppl 1: S52-59. 10.1016/s0168-8227(11)70014-6
- [3]Phillips SM (2008) Insulin and muscle protein turnover in humans: stimulatory, permissive, inhibitory, or all of the above? *Am J Physiol Endocrinol Metab* 295(4): E731. 10.1152/ajpendo.90569.2008
- [4]Ormazabal V, Nair S, Elfeky O, Aguayo C, Salomon C, Zuñiga FA (2018) Association between insulin resistance and the development of cardiovascular disease. *Cardiovascular Diabetology* 17(1): 122. 10.1186/s12933-018-0762-4
- [5]Roberts CK, Hevener AL, Barnard RJ (2013) Metabolic syndrome and insulin resistance: underlying causes and modification by exercise training. *Compr Physiol* 3(1): 1-58. 10.1002/cphy.c110062
- [6]Taylor R (2012) Insulin Resistance and Type 2 Diabetes. *Diabetes* 61(4): 778. 10.2337/db12-0073
- [7]Gutch M, Kumar S, Razi SM, Gupta KK, Gupta A (2015) Assessment of insulin sensitivity/resistance. *Indian J Endocrinol Metab* 19(1): 160-164. 10.4103/2230-8210.146874
- [8]Wallace TM, Levy JC, Matthews DR (2004) Use and Abuse of HOMA Modeling. *Diabetes Care* 27(6): 1487-1495. 10.2337/diacare.27.6.1487
- [9]Muniyappa R, Lee S, Chen H, Quon MJ (2008) Current approaches for assessing insulin sensitivity and resistance in vivo: advantages, limitations, and appropriate usage. *Am J Physiol-Endocrinol Metab* 294(1): E15-E26. 10.1152/ajpendo.00645.2007
- [10]Steele R (1959) Influences of glucose loading and of injected insulin on hepatic glucose output. *Ann N Y Acad Sci* 82: 420-430. 10.1111/j.1749-6632.1959.tb44923.x
- [11]Finegood DT, Bergman RN, Vranic M (1987) Estimation of endogenous glucose production during hyperinsulinemic-euglycemic glucose clamps. Comparison of unlabeled and labeled exogenous glucose infusates. *Diabetes* 36(8): 914-924. 10.2337/diab.36.8.914
- [12]Saccà L, Cicala M, Trimarco B, Ungaro B, Vigorito C (1982) Differential effects of insulin on splanchnic and peripheral glucose disposal after an intravenous glucose load in man. *J Clin Invest* 70(1): 117-126. 10.1172/jci110583
- [13]Bazotte RB, Silva LG, Schiavon FP (2014) Insulin resistance in the liver: deficiency or excess of insulin? *Cell Cycle* 13(16): 2494-2500. 10.4161/15384101.2014.947750
- [14]Beger RD, Dunn W, Schmidt MA, et al. (2016) Metabolomics enables precision medicine: "A White Paper, Community Perspective". *Metabolomics* 12(10): 149-149. 10.1007/s11306-016-1094-6
- [15]Bukowiecka-Matusiak M, Chmielewska-Kassassir M, Szczesna D, Wozniak LA (2016) Metabolomic Insight into Lipid and Protein Profile in Diabetes Using Mass Spectrometry. *Mini Rev Med Chem* 16(14): 1167-1174. 10.2174/1389557516666160722133534
- [16]Liu X, Locasale JW (2017) Metabolomics: A Primer. *Trends Biochem Sci* 42(4): 274-284. 10.1016/j.tibs.2017.01.004
- [17]Shaham O, Wei R, Wang TJ, et al. (2008) Metabolic profiling of the human response to a glucose challenge reveals distinct axes of insulin sensitivity. *Mol Syst Biol* 4: 214-214. 10.1038/msb.2008.50
- [18]Wang Q, Jokelainen J, Auvinen J, et al. (2019) Insulin resistance and systemic metabolic changes in oral glucose tolerance test in 5340 individuals: an interventional study. *BMC Med* 17(1): 217. 10.1186/s12916-019-1440-4

- [19]Wishart DS (2019) Metabolomics for Investigating Physiological and Pathophysiological Processes. *Physiological Reviews* 99(4): 1819-1875. 10.1152/physrev.00035.2018
- [20]Knebel B, Strassburger K, Szendroedi J, et al. (2016) Specific Metabolic Profiles and Their Relationship to Insulin Resistance in Recent-Onset Type 1 and Type 2 Diabetes. *The Journal of Clinical Endocrinology & Metabolism* 101(5): 2130-2140. 10.1210/jc.2015-4133
- [21]Yang Q, Vijayakumar A, Kahn BB (2018) Metabolites as regulators of insulin sensitivity and metabolism. *Nat Rev Mol Cell Biol* 19(10): 654-672. 10.1038/s41580-018-0044-8
- [22]Schoenmaker M, de Craen AJ, de Meijer PH, et al. (2006) Evidence of genetic enrichment for exceptional survival using a family approach: the Leiden Longevity Study. *Eur J Hum Genet* 14(1): 79-84. 10.1038/sj.ejhg.5201508
- [23]American Diabetes A (2010) Diagnosis and classification of diabetes mellitus. *Diabetes care* 33 Suppl 1(Suppl 1): S62-S69. 10.2337/dc10-S062
- [24]Wijsman CA, Rozing MP, Streefland TC, et al. (2011) Familial longevity is marked by enhanced insulin sensitivity. *Aging Cell* 10(1): 114-121. 10.1111/j.1474-9726.2010.00650.x
- [25]Soininen P, Kangas AJ, Würtz P, Suna T, Ala-Korpela M (2015) Quantitative Serum Nuclear Magnetic Resonance Metabolomics in Cardiovascular Epidemiology and Genetics. *Circulation: Cardiovascular Genetics* 8(1): 192-206. 10.1161/circgenetics.114.000216
- [26]Kettunen J, Demirhan A, Wurtz P, et al. (2016) Genome-wide study for circulating metabolites identifies 62 loci and reveals novel systemic effects of LPA. *Nat Commun* 7: 11122. 10.1038/ncomms11122
- [27]Li J, Ji L (2005) Adjusting multiple testing in multilocus analyses using the eigenvalues of a correlation matrix. *Heredity (Edinb)* 95(3): 221-227. 10.1038/sj.hdy.6800717
- [28]R Development Core Team (2019). In: computing RAlaefs (ed). R Foundation for Statistical Computing, Vienna, Austria
- [29]Li J, Ji L (2005) Adjusting multiple testing in multilocus analyses using the eigenvalues of a correlation matrix. *Heredity* 95(3): 221-227. 10.1038/sj.hdy.6800717
- [30]Guo X, Li H, Xu H, et al. (2012) Glycolysis in the control of blood glucose homeostasis. *Acta Pharmaceutica Sinica B* 2(4): 358-367. <https://doi.org/10.1016/j.apsb.2012.06.002>
- [31]Schauer IE, Snell-Bergeon JK, Bergman BC, et al. (2011) Insulin resistance, defective insulin-mediated fatty acid suppression, and coronary artery calcification in subjects with and without type 1 diabetes: The CACTI study. *Diabetes* 60(1): 306-314. 10.2337/db10-0328
- [32]Barnett CR, Barnett YA (2003) KETONE BODIES. In: Caballero B (ed) *Encyclopedia of Food Sciences and Nutrition (Second Edition)*. Academic Press, Oxford, pp 3421-3425
- [33]Ciaraldi TP, R.R. (2004) Insulin Regulation of Ketone Body Metabolism. In: *International Textbook of Diabetes Mellitus*
- [34]Lukens FDW (1964) Insulin and Protein Metabolism. *Diabetes* 13(5): 451. 10.2337/diab.13.5.451
- [35]Bhagavan NV, Ha C-E (2015) Chapter 18 - Lipids III: Plasma Lipoproteins. In: Bhagavan NV, Ha C-E (eds) *Essentials of Medical Biochemistry (Second Edition)*. Academic Press, San Diego, pp 321-337
- [36]Julius U (2003) Influence of plasma free fatty acids on lipoprotein synthesis and diabetic dyslipidemia. *Exp Clin Endocrinol Diabetes* 111(5): 246-250. 10.1055/s-2003-41284
- [37]Feingold KR, Grunfeld C (2000) *Introduction to Lipids and Lipoproteins*. MDText.com, Inc., South Dartmouth (MA)

- [38]Van Tol A, Ligtenberg JJ, Riemens SC, van Haeften TW, Reitsma WD, Dullaart RP (1997) Lowering of plasma phospholipid transfer protein activity by acute hyperglycaemia-induced hyperinsulinaemia in healthy men. *Scand J Clin Lab Invest* 57(2): 147-157. 10.1080/00365519709056383
- [39]Holmes MV, Millwood IY, Kartsonaki C, et al. (2018) Lipids, Lipoproteins, and Metabolites and Risk of Myocardial Infarction and Stroke. *Journal of the American College of Cardiology* 71(6): 620. 10.1016/j.jacc.2017.12.006
- [40]Joshi R, Wannamethee SG, Engmann J, et al. (2020) Triglyceride-containing lipoprotein sub-fractions and risk of coronary heart disease and stroke: A prospective analysis in 11,560 adults. *Eur J Prev Cardiol* 27(15): 1617-1626. 10.1177/2047487319899621
- [41]Ference BA, Ginsberg HN, Graham I, et al. (2017) Low-density lipoproteins cause atherosclerotic cardiovascular disease. 1. Evidence from genetic, epidemiologic, and clinical studies. A consensus statement from the European Atherosclerosis Society Consensus Panel. *European Heart Journal* 38(32): 2459-2472. 10.1093/eurheartj/ehx144
- [42]Campos H, Genest JJ, Blijlevens E, et al. (1992) Low density lipoprotein particle size and coronary artery disease. *Arteriosclerosis and Thrombosis: A Journal of Vascular Biology* 12(2): 187-195. 10.1161/01.ATV.12.2.187
- [43]Vojinovic D, van der Lee SJ, van Duijn CM, et al. (2018) Metabolic profiling of intra- and extracranial carotid artery atherosclerosis. *Atherosclerosis* 272: 60-65. 10.1016/j.atherosclerosis.2018.03.015
- [44]Tobias Deirdre K, Lawler Patrick R, Harada Paulo H, et al. (2018) Circulating Branched-Chain Amino Acids and Incident Cardiovascular Disease in a Prospective Cohort of US Women. *Circulation: Genomic and Precision Medicine* 11(4): e002157. 10.1161/CIRCGEN.118.002157
- [45]Wang TJ, Larson MG, Vasan RS, et al. (2011) Metabolite profiles and the risk of developing diabetes. *Nature Medicine* 17(4): 448-453. 10.1038/nm.2307
- [46]Lotta LA, Scott RA, Sharp SJ, et al. (2016) Genetic Predisposition to an Impaired Metabolism of the Branched-Chain Amino Acids and Risk of Type 2 Diabetes: A Mendelian Randomisation Analysis. *PLOS Medicine* 13(11): e1002179. 10.1371/journal.pmed.1002179

