



Universiteit
Leiden
The Netherlands

Exploring circulation dynamics in Han dynasty China: insights from isotopic analysis of lead glazed pottery

Wang, C.; Ceuster, S. de; Eremin, K.; Laursen, S.; Degryse, P.A.I.H

Citation

Wang, C., Ceuster, S. de, Eremin, K., Laursen, S., & Degryse, P. A. I. H. (2024). Exploring circulation dynamics in Han dynasty China: insights from isotopic analysis of lead glazed pottery. *Archaeological And Anthropological Sciences*, 16. doi:10.1007/s12520-024-02096-0

Version: Publisher's Version

License: [Creative Commons CC BY 4.0 license](https://creativecommons.org/licenses/by/4.0/)

Downloaded from: <https://hdl.handle.net/1887/4108950>

Note: To cite this publication please use the final published version (if applicable).



Exploring circulation dynamics in Han Dynasty China: insights from isotopic analysis of lead glazed pottery

Chen Wang¹ · Sarah De Ceuster² · Katherine Eremin³ · Sarah Laursen⁴ · Patrick Degryse^{1,2}

Received: 28 June 2024 / Accepted: 11 October 2024
© The Author(s) 2024

Abstract

This study investigates lead provenance and circulation patterns in Han Dynasty (202BC–220AD) China through the analysis of lead glazed pottery. Four objects were studied using a combination of typological study, elemental chemistry and lead isotope ratio analysis. The results for each object were compared with databases of ‘lead mining districts’ (lead deposits) and ‘lead usage districts’ (lead-containing artifacts unearthed in different spatial and temporal ranges) to assess the lead sources used for each sample and offers a spatial-temporal range of the use of these lead resources. Three distinct groups of lead and their possible circulating spatial-temporal scales are identified across six samples in this study. A possible change in lead supply networks between the Western Han Dynasty (202BC–9AD) and the Eastern Han Dynasty (25AD–220AD) is proposed. This study also highlights the probable changes in the movement of lead resources from the Western Han Dynasty to the Tang Dynasty (618AD–690AD), suggesting improvements in long-distance transport capabilities, and the development of economic divisions and exchange connections in ancient Chinese society. Our findings contribute to a deeper understanding of the economic and political dynamics during the Han Dynasty and emphasize the significance of lead isotope analysis of glazed pottery in exploring resource movement.

Keywords Han Dynasty · Lead glazed pottery · Lead provenance and circulation · Typological analysis · Kernel density estimation

Introduction

A glaze is a vitreous layer that forms a continuous coating on the surface of ceramic bodies. Low-temperature glazes in China predominantly refer to lead glaze. Lead (Pb) functions as a flux in the firing process, with melting temperatures ranging from 800°C to 1000°C, although certain scholars define this range as 700°C to 900°C (Zhao and Wei 2020; Luo and Zheng 2022).

In Chinese ceramic history, low-temperature lead glazed pottery gained prominence with the production of green lead glazed pottery in the Han Dynasty (202BC–220AD) and tri-colored pottery in the Tang Dynasty (618AD–907AD) and Liao Dynasty (907AD–1125AD). The earliest evidence of lead glazed pottery in China was unearthed at the capital site of the Qi State during the Warring States Period (475BC–221BC) (Lang and Cui 2017). The popularity of lead glazed pottery reached its zenith in the Western Han Dynasty (202BC–8AD) and experienced a subsequent surge in production that culminated in its first peak during the Eastern Han Dynasty (25AD–220AD) before gradually declining and eventually disappearing. After several centuries, a resurgence of lead glazed pottery occurred during the Tang Dynasty (618AD–907AD) with the emergence and development of tri-colored pottery (Luo and Zheng 2022; Wang 2013).

Lead glazed pottery artifacts from the Han Dynasty in China exhibit three distinct characteristics: their relative scarcity compared to unglazed clay gray pottery (泥质灰陶), their non-functional nature for daily life purposes, and

✉ Chen Wang
c.wang@arch.leidenuniv.nl

¹ Faculty of Archaeology, Leiden University, Einsteinweg 2, Leiden, Zuid-Holland 2333 CC, The Netherlands

² Department of Earth and Environmental Sciences, KU Leuven, Leuven, Belgium

³ Straus Center for Conservation and Technical Studies, Harvard Art Museums, Cambridge, USA

⁴ Division of Asian and Mediterranean Art, Harvard Art Museums, Cambridge, USA

their lack of exclusive shapes. Firstly, the quantity of lead glazed pottery artifacts is notably smaller than that of clay gray pottery during the same period. For instance, in the Shaogou Han burials (烧沟汉墓), lead glazed potteries represent only 4.4% of the total pottery discovered. Clay gray pottery remains the predominant type used for burial purposes (Wang and Tian 2010). Even during the most prosperous period, the number of lead glazed pottery artifacts found in burials remains lower than that of clay gray pottery. In the Dongyuan Burials (董院墓地), the burials with lead glazed pottery in them account for 94% of the early Eastern Han Dynasty burials, yet lead glazed pottery's proportion in all pottery of these burials is only 34% (Xu 2019). The distribution of lead glazed pottery within the Han Dynasty is also uneven, with higher concentrations found in Henan and Shaanxi provinces compared to other regions (Wang 2013). Secondly, lead glazed pottery artifacts serve no functional purpose in daily life (though they are grave goods with a proper function in that context). These artifacts exhibit visible marks of how they were manufactured such as trimming marks (which are the visible marks or lines left on the surface of a ceramic piece because of the trimming process), seams, brush marks, and the presence of flowing glaze after the glazing process. Additionally, the glaze layers are sometimes uneven and prone to peeling (Wang and Tian 2010). Thirdly, lead glazed pottery, particularly vessels, lacks distinctive shapes and styles. Apart from the glaze, they closely resemble gray clay pottery in terms of their basic characteristics (Wang and Tian 2010; Chen 2005). The use of lead glazed pottery in ancient China might have been limited due to the potential hazards associated with the easily peeled glaze layer and the poisonous lead content. Consequently, lead glazed pottery has primarily been found in burial contexts rather than residential sites (Wang and Tian 2010; Xiong 2014; Wang 2013). Due to their non-exclusive shapes and rough craftsmanship, lead glazed pottery has been considered a cost-effective substitute for bronze (or bronze with patina) and lacquerware (Wood 1999).

The initial investigation of excavated lead glazed pottery from the Han Dynasty in China was carried out in the 1940s under the coordination of Bingqi Su (Su 1948). Subsequently, during the 1980s, research on Han Dynasty lead glazed pottery expanded significantly (Wang et al. 2022; Dong et al. 2020; Wang 2013). Studies on lead glaze primarily focus on various aspects, including origins, developments, evolutions, production techniques, decorative styles, distribution patterns, typological classifications, burial contexts, regional studies, and its relationship with glass and faience (Luo 1990; Chen 2005; Yang 2005; Yu and Teng 2008; Xie 2010; Wang and Tian 2010; Tang 2011; Du 2011). Chemical composition analyses of lead glaze and its corrosive properties have also been conducted by researchers

such as Zhang and Zhang (1982), Zhu et al. (2010), and Wang et al. (2019).

On a global scale, lead isotope analysis has been applied to the provenance of ceramics and glazes. For example, Wolf et al. (2003) conducted lead isotope analyses on Islamic lead-glazed pottery from Fustat, Egypt, dating from the 8th to the 14th centuries AD. Their results indicated that the lead used in these glazes came from distant regions, including Iran, Tunisia, Sardinia, Spain, and the Taurus Mountains. Huntley et al. (2007) examine pottery production in the Rio Grande region of New Mexico, highlighting the use of mixed ores from a variety of sources. Renson et al. (2013; 2014) use lead isotopes to distinguish between local and imported pottery, and show that certain fabric types correspond to different lead isotope compositions in Cyprus. Medeghini et al. (2020) analyse ceramic deposits in Britannia, with a particular focus on their role in Roman architectural ceramics, highlighting the contribution of the British Isles to the Roman Empire's pottery industry. Paghi et al. (2024) carry out a study of Italian maiolica, a type of tin-glazed pottery, using lead isotope analysis to identify different production centres and their material sources.

Other isotopes have also been used in ceramic studies. Ma et al. (2014) analyzed ash glazes and limestone glazes from different artefacts in Yue Kiln and Jingdezhen, China, revealing distinct isotopic signatures indicating different limestone sources and production technologies. Renson et al. (2021) extended the use of isotopic analysis to Early Formative pottery from ancient Mexico. The use of lead and strontium isotopes successfully distinguished different production centers, identified imports, and provided new insights into production strategies during this period. Frigolé et al. (2024) introduce a multi-isotope approach combining strontium, neodymium, and lead isotopes to better understand ceramic provenance in South America.

However, the modern scientific and technological analyses of Chinese glaze have primarily focused on tri-colored glazed pottery from the Tang Dynasty and subsequent dynasties, as well as a set of low-fired glazed pottery from the Warring States Period, rather than on lead glaze from the Han Dynasty. Lead isotopic analysis is recognized as the most effective method for studying the provenance of lead in glazes (Henderson et al. 2020), and it has been applied to ancient Chinese glaze (Shen et al. 2018, 2019; Henderson et al. 2020; Tatsumi et al. 2011; Chang 2019; Chang et al. 2021; Cui et al. 2010). The predominant focus of lead isotopic studies concerning Chinese glaze has concentrated on the tri-colored glaze of the Tang Dynasty, the Liao Dynasty, and the Bohai State (698 AD-926 AD, also known as Baohai or Balhae). Research into the lead isotopic signatures of lead-glazed pottery from the Han Dynasty remains notably scarce.

This study, marking a significant advancement, undertakes the first examination of the lead isotopic characteristics of four lead-glazed vessels from the Han Dynasty. By addressing this gap in knowledge, our research contributes invaluable insights into this important historical epoch, encompassing the exploration of trade networks, technological progressions, artistic evolution, and enriching the broader context of Chinese ceramic history.

Materials

The materials (Fig. 1) used for this study were obtained from the collection of the Harvard Art Museums. Specifically, vessel 2006.170.191 is identified as a ‘Bowl with landscape décor’, vessel 2006.170.197 is identified as a ‘cylindrical tripod vessel (*lian* 簋) with conical lid’, artefact 2006.170.200 is identified as a ‘lamp with a base in the form of a bear’, and artefact 2006.170.202 is identified as a ‘Mountain-form censer (*boshanlu* 博山炉) with tortoise-form base’. (Detailed descriptions of the objects are given in [Appendix A.](#))

Methodology

Chemical composition analysis

All four vessels underwent non-destructive portable X-ray fluorescence analysis to identify the elements present and validate the lead-rich composition of all the glazes. Subsequently, tiny sections of glaze were extracted from areas of damage and/or loss. These samples were prepared, mounted, and meticulously polished to facilitate analysis using scanning electron microscopy with energy dispersive microanalysis (SEM-EDX), enabling the acquisition of quantitative data.

Lead isotopic analysis

Four samples not used in SEM analysis, left unmounted, were used for lead isotopic analysis according to the methodology adapted from Rademakers et al. (2020). The samples were manually ground to a fine powder using an agate mortar. These powdered samples were brought into solution following a high temperature acid digestion procedure (using concentrated HF, HCl and HNO₃) and subsequently subjected to a lead isolation procedure using Pb-SPEC resin (Eichrom Technologies). Raw LI ratios were measured on a Thermo Scientific Neptune Multi-Collector-Inductively Coupled Plasma-Mass Spectrometer (MC-ICP-MS) and corrected for Tl-based mass discrimination following Russell’s law, based on replicate measurements of the NIST

SRM 981 (commonly accepted ratio values from Galer and Abouchami (1998). Error values were better than 0.05% for the corrected ratios to ²⁰⁴Pb.

Kernel density estimates method

In this study, the lead isotope composition of four lead glazes was evaluated using a kernel density estimate approach (KDE) (De Ceuster and Degryse 2020). While KDE has been previously applied in archaeological Chinese bronze (Hsu et al. 2018), this study represents the first application to ancient Chinese glaze.

In using KDE, the relative probability that a sample is composed of lead ore from a specific source is determined by calculating the definite integral under the kernel density estimate plot of the lead isotopic composition of ores from different ‘lead mining districts’. The relative probability that a sample is made of lead from the same source as other artefacts is determined by calculating the definite integral under the kernel density estimate plot of the lead isotope composition of artefacts from different ‘lead usage districts’. The interval for all the calculations of the integration of density function is 10 times the standard deviation. The selection of bandwidth is predicated upon the bandwidth estimator introduced by Sheather and Jones (1991). This estimator’s efficacy has been substantiated through empirical evaluation, in the investigation of lead provenance conducted by De Ceuster et al. (2023). All comparisons were performed using R© software. A match of all three LI ratios with the reference datasets may indicate that the sample originated from the same source or used the same lead as the reference materials, while a lack of match may indicate an unknown origin (i.e., not present in the datasets), or the composite or recycled nature of the sample.

Results

X-ray fluorescence

Analysis of the green glaze of ceramics 2006.170.191, 2006.170.197.A-B (from the body and lid of the burner respectively) and 2006.170.200 showed that the glaze had high levels of lead and silicon with some copper, tin and iron, as well as traces of calcium and strontium. Analysis showed that both the green and yellow glaze on 2006.170.202.A-B had high levels of lead, similar to those in the green glaze of the other ceramics. However, the yellow glaze (.A) lacked detectable copper or tin, whilst the green glaze (.B) contains some copper and barium and likely trace tin. The presence of tin with copper suggest use of bronze as the colorant.

Fig. 1 a.1. Bowl with landscape décor. Han dynasty, 1st century BCE–2nd century CE. Earthenware with green lead glaze. Harvard Art Museums/Arthur M. Sackler Museum, Partial gift of the Walter C. Sedgwick Foundation and partial purchase through the Ernest B. and Helen Pratt Dane Fund for Asian Art, 2006.170.191. Photo: © President and Fellows of Harvard College; **a.2.** the pottery box (陶盒) from Xi'an. Their covers are typologically like bowl 191 (Fig. 2.9 in Tang 2011); **b.1.** Cylindrical tripod vessel (*lian*) with conical lid. Han dynasty, 1st century BCE–1st century CE. Earthenware with green lead glaze. Harvard Art Museums/Arthur M. Sackler Museum, Partial gift of the Walter C. Sedgwick Foundation and partial purchase through the Alpheus Hyatt Purchasing Fund, 2006.170.197.A-B. Photo: © President and Fellows of Harvard College; **b.2.** the CII type pottery *lian* (陶奩) from Xi'an. They are typologically like tripod vessel 197 (Fig. 2.8 in Tang 2011); **c.1.** Lamp with base in the form of a bear. Eastern Han dynasty, 1st–3rd century CE. Earthenware with green lead glaze. Harvard Art Museums/Arthur M. Sackler Museum, Partial gift of the Ernest B. and Helen Pratt Dane Fund for Asian Art, 2006.170.200. Photo: © President and Fellows of Harvard College; **c.2.** other bear-based pottery lamps from the Han Dynasty (Fig. 2.7 in Ma 2012); **d.1.** Mountain-form censer (*boshanlu*) with tortoise-form base. Western Han dynasty, 1st century BCE. Earthenware with green and brown lead glazes. Harvard Art Museums/Arthur M. Sackler Museum, Partial gift of the Walter C. Sedgwick Foundation and partial purchase through the Alvan Clark Eastman Bequest Fund, 2006.170.202.A-B. Photo: © President and Fellows of Harvard College; **d.2.** pottery incense burner (*boshanlu* 博山炉) unearthed from Jiyuan, Henan (Fig. 10 in Henan Provincial Museum 1973(2))



a.1.

2006.170.191



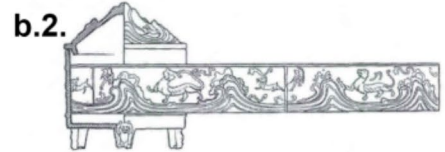
a.2.

pottery box from Xi'an

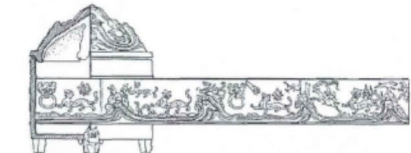


b.1.

2006.170.197



b.2.

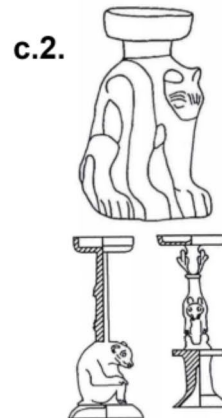


pottery *Lian* from Xi'an



c.1.

2006.170.200



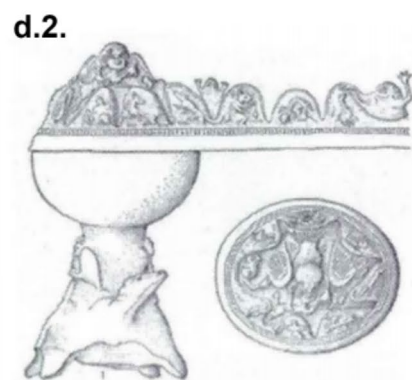
c.2.

bear-based pottery lamps from the Han Dynasty



d.1.

2006.170.202



d.2.

pottery incense burner unearthed from Henan

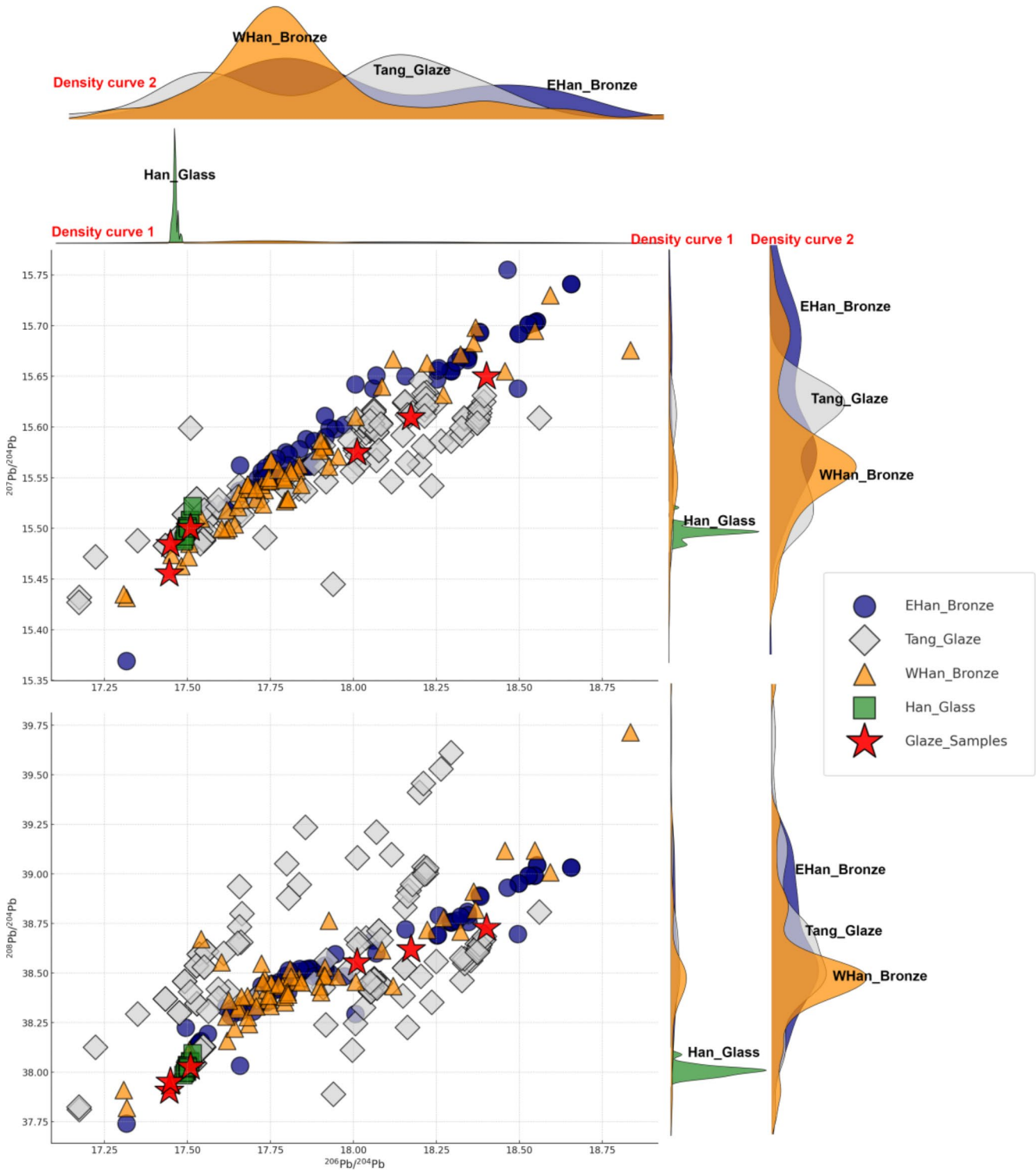
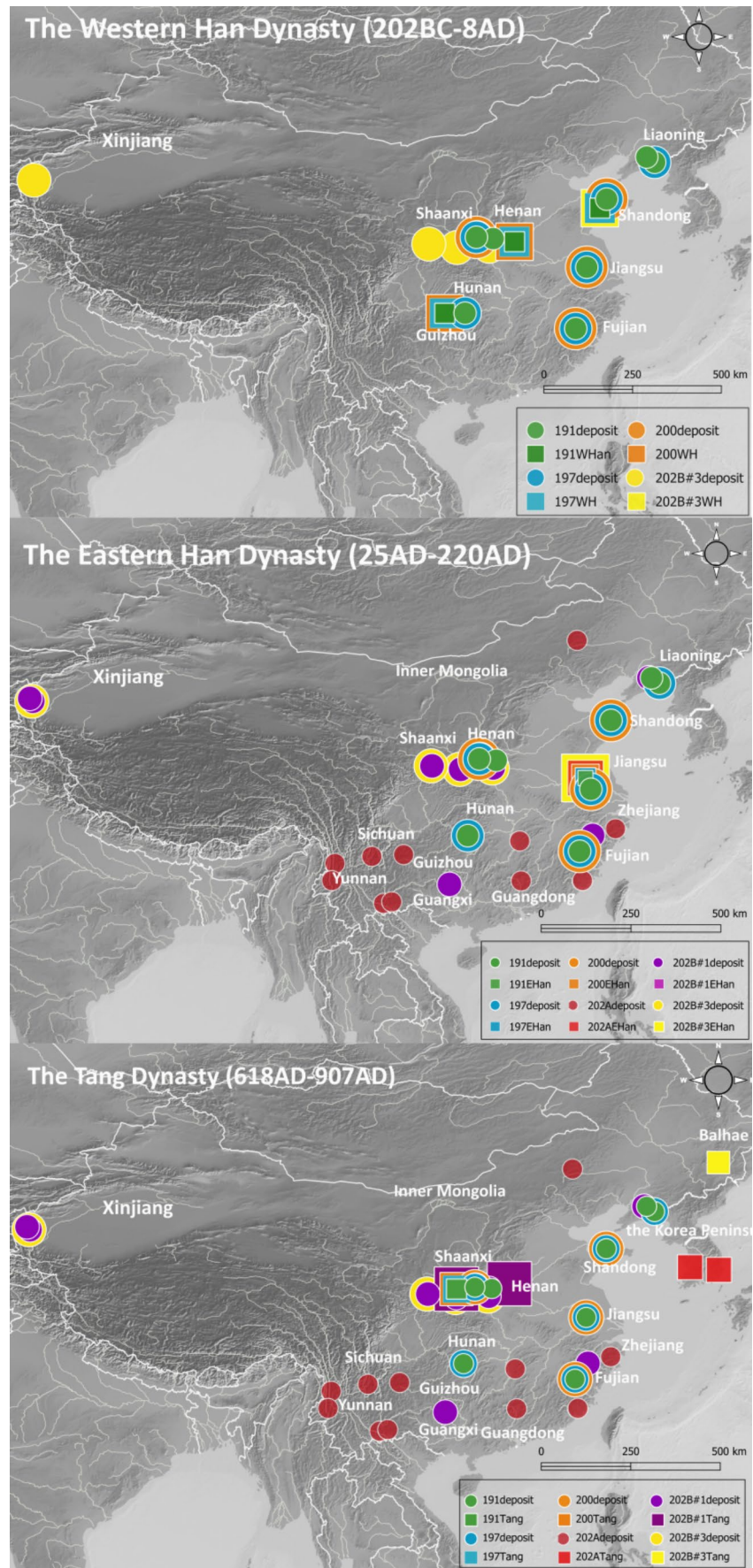


Fig. 2 Scatter plots depicting the relationship between samples and various lead usage districts, accompanied by density curves. The lead usage districts represented in the figure include the bronze artifacts from the Western Han Dynasty (WHan_Bronze), the bronze artifacts from the Eastern Han Dynasty (EHan_Bronze), the glass artifacts from the Han Dynasty (Han_Glass), and the glaze artifacts from the Tang Dynasty (Tang_Glaze). The fill colors of the density curves and the points are coordinated and coherent with the legend. Because the

distribution of Han_Glass in the scatter plots is too narrow, its density curves dominate. Hence, we need to exclude the curves of the Han_Glass to see other variations more explicitly. Density curve 2 is obtained by excluding the samples in this study (green curves) and the Han glass from density curve 1, providing a clearer representation of the density variations in the LI signatures between the Han Dynasty bronzes and the Tang Dynasty glazes

Fig. 3 Maps of lead resources provenances and circulations in different periods. The circles indicate the lead deposits which are possible sources. The squares indicate the location where lead products are unearthed. The circles and squares of the same color mean that the LI signatures of their lead ores or lead products correspond. (the red squares in Tang period Korea represent the glass corresponding with sample 202 A, details could be seen in SFig. 10)



Scanning electron microscopy with energy dispersive microanalysis

Analysis of glaze samples by scanning electron microscopy with energy dispersive microanalysis (SEM-EDX) confirmed that all samples had high levels of lead, from around 52 to 68% PbO. As found by XRF, barium was present only in the green glaze from 2006.170.202.B. The glaze samples from 2006.170.191 and 2006.170.197 were the most homogenous, whilst the glaze from 2006.170.200 and 200.170.202 contain abundant crystals. Analysis of the crystals in the glaze from 2006.170.202.A shows these have high levels of aluminum, silicon and potassium. An interaction layer with a concentration of crystalline phases occurs in all the samples at the ceramic to glaze boundary. Most samples contain a red ceramic body, but the sample from 2006.170.200 has a buff colored ceramic. Deterioration and/or cracking of the glaze is visible in several samples and there is a thick burial crust on sample 2006.171.191 (see Supplementary Table 1, STable 1).

For Sample 191, the glaze thickness measures at least 1.2 mm, with the analyzed areas ranging from 200 to 550 microns in length and 280 to 550 microns in width. In Sample 197 A, the glaze thickness is between 35 and 40 microns, with areas ranging from 10 to 50 microns in length and 10 to 40 microns in width. The glaze is homogeneous, and inclusions are observed only near the boundary with the ceramic, although these inclusions were not analyzed. Sample 197B exhibits a glaze thickness of 75 to 125 microns, with area dimensions ranging from 150 to 200 microns in length and 40 to 50 microns in width. This glaze is also homogeneous, with inclusions limited to the boundary with the ceramic, which were not analyzed. In Sample 200, the glaze thickness is 15 to 35 microns, with areas measuring between 5 and 15 microns in both length and width. Inclusions are again only observed near the boundary with the ceramic and were not analyzed. Sample 202 A presents a glaze thickness ranging from 35 to 100 microns, with area dimensions of 5 to 90 microns in length and 5 to 70 microns in width. Numerous inclusions are present in the glaze, some of which were included in the area analyses, and the inclusions consist of aluminum, silicon, and potassium (Al-Si-K). Sample 202B has a glaze thickness of 200 to 300 microns, with areas measuring 20 to 100 microns in length and 20 to 85 microns in width. This sample also contains a significant number of inclusions, some of which were included in the area analyses, with the inclusions consisting of Al-Si-K. The analysis was conducted with a count time of 60 s.

Regarding the colorants, although the precise colorant for the yellow glaze is uncertain, it is assumed to be iron. For the green glaze, it is likely a combination of lead (Pb) and copper (Cu), with a possible contribution from iron

(Fe). Furthermore, it is assumed that tin is dissolved within the glaze, as no tin particles were observed in the samples.

Lead isotopic analysis

The lead isotope (LI) ratios of $^{206}\text{Pb}/^{204}\text{Pb}$, $^{207}\text{Pb}/^{204}\text{Pb}$, $^{208}\text{Pb}/^{204}\text{Pb}$ for the four glazed objects have been presented in STable 2. The lead isotopic profiles for samples from incense burner 202 exhibit a linear distribution (see Supplementary Figure 1, SFig. 1), suggesting the possibility that the lead used in both the base and cover of incense burner 202 may originate from the same source (Pollard and Heron 2008), although this is refuted by comparison with the lead deposits in the discussion section of this paper. This finding implies that the lead raw materials employed in the production of incense burner 202 were consistent. Conversely, samples from the objects 191, 197, and 200 exhibit distinct LI signatures compared to incense burner 202, indicating potential variations in their geographical origins or manufacturing periods. Although these glaze samples exhibit proximity to each other on the LI diagram, further comparative analysis will be necessary to discern their respective sources.

Discussion

The origin of lead raw materials

Given that all four glazes analyzed in this study exhibit high lead contents ranging from 50% to nearly 70% by weight, their lead isotopic compositions indicate the potential sources of the lead used. To ascertain the likely origins, the 'natural lead mining districts' database was utilized, which was derived from the geochemical lead ore database compiled by Hsu and Sabatini (2019). In order to identify the specific deposits associated with the glaze samples, comparisons are made with all the deposits in China. Each lead deposit included in the analysis must comprise a minimum of 10 ore samples (galena) to ensure the highest level of accuracy in the comparison results (Baron et al. 2014). In comparing samples with deposits, a match is defined as a result where all three relative probability values exceed 0.1, in which context, the deposit with the lowest value exceeding the lowest value of any other deposits is considered the closest match. A table with the data of the natural lead mining districts (those most relevant) could be seen in Supplementary ore data.

A comparison was made between the LI signatures of glaze sample 191 and the deposits in China. SFig. 2 highlights the Qixiashan deposit in Jiangsu Province as the most closely aligned with the lead resources utilized in

glaze sample 191. Zhenzigou (Liaoning Province), Yutang (Hunan Province), Xiquegou (Liaoning Province), Shuiji (Fujian Province), Qingchengzi (Liaoning Province), Linglong (Shandong Province), Haopingou (Henan Province), Dongtongyu (Shaanxi Province) deposits are also the possible sources.

As shown in SFig. 3, the lead ores used for glaze sample 197 exhibits the closest resemblance to the Linglong deposit located in Shandong Province. Wenyu (Henan Province), Yutang (Hunan Province), Shuiji (Fujian Province), Qixiashan (Jiangsu Province), Xiquegou (Liaoning Province), Dongtongyu (Shaanxi Province) deposits are also possible sources.

As shown in SFig. 4, the Linglong deposit located in Shandong Province, is the most likely deposit associated with the lead source for glaze sample 200. Shuiji (Fujian Province), Qixiashan (Jiangsu Province), Dongtongyu (Shaanxi Province) deposits are also possible sources.

The Jinding and Gejiu deposits in Yunnan Province is the most likely source of the lead used in glaze sample 202 A (SFig. 5). Tianbaoshan (Sichuan Province), Fankou (Guangdong Province), Dalingkou (Zhejiang Province), Tianqiao (Guizhou Province), Qibaoshan (Hunan Province), Niuchang (Yunnan Province), Hetaoping (Yunnan Province), Dingjiashan (Fujian Province), Dajing (Inner Mongolia) deposits are also possible sources.

The Zhilingtou deposit in Zhejiang and Fujian Provinces emerges as the most probable source of the lead in glaze sample 202B#1 (SFig. 6). Yindongzi (Shaanxi Province), Qingchengzi (Liaoning Province), Heigou (Henan Province), Beishan (Guangxi Province), Bafangshan (Shaanxi Province), Kalayasikake (Xinjiang Uyghur Autonomous Region), Kalangu (Xinjiang Uyghur Autonomous Region), Tamu (Xinjiang Uyghur Autonomous Region) deposits are also possible sources.

The Bafangshan deposit in Shaanxi Province demonstrates the highest match with the lead resources used in glaze sample 202B#3 (SFig. 7). Heigou (Henan Province), Yindongzi (Shaanxi Province), and Kalayasikake (Xinjiang Uyghur Autonomous Region) deposits are also possible sources.

Moreover, it is noteworthy that the potential sources of glaze sample 202B#1 may encompass all of the potential origins of glaze sample 202B#3. These origins include the Bafangshan, Heigou, Yindongzi, and Kalayasikake deposits. Conversely, the potential sources of glaze sample 202 A exhibit no overlap with any of the potential sources of either glaze sample 202B#1 or 202B#3.

This observation might indicate that the lead present in the glaze of the lid and body of object 202 originated from diverse deposits located in different geographical regions. Furthermore, the chemical compositions of the lid glaze

and body glaze exhibit notable disparities, as illustrated in STable 2, where the lid glaze exhibits a barium content that is absent in the body glaze. These disparities further substantiate the proposition that the lid and body might have been manufactured independently of each other (either in the same workshop using different recipes and raw materials or in different workshops).

Comparison with archaeological objects

Glaze

Due to the scarcity of research on the LI signatures of Han lead glazed pottery, our data were compared to Tang Dynasty (618 AD-907 AD) lead glazes from Henan province (Tatsumi et al. 2011; Chang 2019; Cui et al. 2010) and Shaanxi province (Chang 2019; Cui et al. 2010), and from the Tang capitals of Xi'an (Chang et al. 2021; Chang 2019) and Luoyang city (Chang 2019). Furthermore, a comparison was made to lead glazes from Balhae (the Bohai state) (698 AD-926 AD) in Northeast China, the Korean Peninsula, and the Russian Far East from 698 AD to 926 AD (Chang 2019), as well as glazes from 9th-century Japan (Sasaki et al. 1994) and tri-color glazes found in Japan (Tatsumi et al. 2011; Chang 2019), and glazes from the Silla period (57 BC-676 AD) in Korea (Cho et al. 2007). Additionally, two sets of data are available from western and central Eurasia, comprising Roman lead glazes from the 1st to 4th centuries (Walton and Tite 2010) and lead glazes from Kazakhstan dating from the 9th to 12th centuries (Klesner et al. 2021). See the data in Supplementary glaze data.

Based on SFig. 8, it can be deduced that glaze sample 191 exhibits a similar LI signature to the glaze from Xi'an during the Tang Dynasty. Likewise, glaze sample 202B#3 displays a comparable LI signature to the glaze from Balhae (as Bohaiguo in the SFig. 8). Glaze sample 202B#1 shows a resemblance to the LI signature of the Tangsancai glaze from the Huangye kiln in Henan Province and the Liquanfang Kiln in Shaanxi Province. Glaze samples 197 and 200 exhibit resemblances to the glazes found in Xi'an during the Tang Dynasty. In contrast, glaze sample 202 A does not manifest any discernible affinities with any of these aforementioned glazes. Samples 197 and 200 have similar LI ratios as the Kazakhstan glazes, for which raw material origin is attributed to the Central Asian Orogenic Belt and Xinjiang in China (Klesner et al. 2021), these deposits/regions are not plausible raw material sources for samples 197 and 200, as ore deposits formed during the same geological period in different locations can exhibit very similar ranges of LI abundance ratios (Pernicka 2014).

Bronze

The LI signatures found in Han Dynasty bronze artifacts provide valuable information regarding the origin of the lead ores employed. A comparative assessment is made between our glazed pottery artefacts and Han Dynasty bronzes. The LI signature database of Han bronze artifacts encompasses bronzes from Guizhou (Huang et al. 2021), Shaanxi (Zhangsun et al. 2017), Chengdu city (Li et al. 2020), Shandong (Wei and Dong 2007; Cui and Wu 2007), Sichuan (Ma et al. 2024; Wei et al. 2024), Hubei (Li et al. 2023), Fujian, Anhui, Zhejiang and Jiangsu (Yang et al. 2023; Wang et al. 2024), as well as from Henan (Chen et al. 2018). These diverse bronze artifacts represent distinct ‘lead usage districts’ within the Han Dynasty. The Han bronze artefacts used for comparison (mostly) contain lead added to alloy (with lead contents above 2%), therefore LI ratios of bronze artefacts indicate the source of lead. See the data in Supplementary bronze data.

In SFig. 9, it can be inferred that glaze samples 191 and 197 potentially share the same lead resources as the bronze artifacts from Eastern Han Jiangsu, Western Han Henan, Western Han Shandong, and Western Han Guizhou. The LI signature of glaze sample 200 exhibits similarity to these Han Dynasty bronzes, same as samples 191 and 197, but the relative possibilities of glaze sample 200 are low (less than 0.1). Glaze sample 202 A’s LI signature corresponds to the bronze artifacts from Eastern Han Jiangsu, while 202B#1’s LI signature aligns with those from Eastern Han Fujian. Glaze sample 202B#3’s LI signature corresponds to the bronze artifacts from Western Han Anhui.

Different products, different lead sources?

Our glaze samples establish intriguing connections among the glaze from the Tang Dynasty, glaze from the Han Dynasty, and bronze from the Han Dynasty. Notably, each glaze sample exhibits unique patterns of overlap with these materials. This prompts an inquiry: do glaze and bronze, both of which contain lead, share common sources of lead, or do they rely on independent supplies? Do these supply dynamics undergo alterations over time?

In Fig. 2, we can observe the differences in the LI signatures of the lead used in the Western Han Dynasty Bronze (WHan bronze, see data reference in *Bronze* section), Eastern Han Dynasty Bronze (EHan bronze, see data reference in *Bronze* section), Han Dynasty glass (Li et al. 2016), and Tang Dynasty glaze (see data reference in *Glaze* section). The LI compositions of the Tang glaze exhibit distinct concentrated zones as evident from the density curves, as well as the LI fields for the Tang glaze differ from those of the Han bronzes, indicating a different lead supply sources/

source between Tang glaze and Han bronze. Nevertheless, the lead isotope compositions of Han bronze, Han glass and three of our samples exhibit a correlation, which suggests that they may have derived from corresponded sources of lead.

We could draw a hypothesis to explain this phenomenon, suggesting that during the Eastern Han Dynasty, the production of lead glaze became more independent from the bronze industry. Subsequently, during the Tang Dynasty, the glazed pottery industry further developed its independent lead supplies and sources. As the bronze industry declined in the Eastern Han Dynasty and subsequent dynasties, it probably gradually lost its dominance over lead resources, while glaze pottery emerged as a significant consumer of lead. However, to confirm this inference, additional LI data on bronze, leaded glass, and leaded glaze, accompanied by clear archaeological information, is required. Further investigations involving these materials are necessary.

The expansion of the Han Dynasty

When we plot all potential lead mining and usage locations on maps in chronological order (Fig. 3), we discern the presence of at least three distinct lead types, which are the lead identified in glaze samples 191, 197, and 200; the lead within glaze sample 202 A; and the lead in glaze samples 202B#1 and 202B#3.

Firstly, the lead in glaze samples 191, 197, and 200 shares a common origin, potentially linked to deposits in the regions of Shaanxi, Jiangsu, Fujian, or Shandong. This type of lead might have been employed in Henan and Guizhou during the Western Han Dynasty, in Jiangsu during the Eastern Han Dynasty, and in Shaanxi during the Tang Dynasty.

Secondly, considering that glaze samples 202B#1 and 202B#3 are derived from the same segment of object 202, it is highly probable that the lead in them originates from the same source. In this case, the plausible sources are the deposits in Henan or Shaanxi, which probably have been utilized in Shandong during the Western Han Dynasty, in Jiangsu and Fujian during the Eastern Han Dynasty, and in Shaanxi, Henan, and Balhae during the Tang Dynasty.

Conversely, the lead in glaze sample 202 A exhibits distinctive characteristics when juxtaposed with any other lead types in this study. It is strongly indicative of a South China origin. It was also used in Jiangsu during the Eastern Han Dynasty, while in Korea during the Tang Dynasty.

Based on Fig. 3, discernible transformations are shown in the utilization patterns of these three distinct types of lead from the Western Han Dynasty to the Tang Dynasty. In the case of the lead type in glaze samples 191, 197, and 200, there is strong evidence to suggest that it was actively exploited and employed over the span of numerous centuries,

indicative of its abundant yield. Notably, its utilization spectrum appears to have contracted over time. Conversely, the lead variety utilized in glaze samples 202B#1 and 202B#3 displayed an expansion in usage domains, particularly from the Eastern Han to the Tang Dynasty. A similar trend is observable in the case of the lead in glaze sample 202 A.

In the *Han Shu* (汉书), the number of lead deposits during the Eastern Han Dynasty surpasses that of the Western Han Dynasty (Chen 2008). Moreover, the Han Dynasty is renowned for its significant achievements in trade and unprecedented territorial expansion (Yu 1967). In the Han Dynasty, the Chinese government employed trade as a political instrument to maintain control over the frontier “barbarians”. Commodities, including products containing lead, were among the items included in this exchange network, resulting in the long-distance transportation of lead resources. Additionally, there were also significant transformations between the Eastern Han Dynasty and the Tang Dynasty. The development of long-distance exchange could relate to the Grand Canal in China, first built during the Sui Dynasty (581AD–618AD), which greatly contributed to the transportation capacity between the South and the North (Quan 2011).

Nonetheless, the discernible trends in transformations spanning the Western Han Dynasty, the Eastern Han Dynasty, and the Tang Dynasty underscore a number of potential advancements: (1) an increase in the number of lead sources; (2) an expansion of the geographical scope of lead circulation and a territorial expansion towards southwest and southeast China.

Conclusion

This study focuses on the analysis of four lead glazed objects from the Han Dynasty in China. Utilizing kernel density estimates method, it is concluded that there are at least three types of lead in these samples. The lead used in glaze samples from 2006.170.191, 2006.170.197, and 2006.170.200 likely originated from the Jiangsu, Shaanxi, Fujian or Shandong areas. On the other hand, the lead in glaze samples from 2006.170.202 is consistent with the lead from Shaanxi and Henan, or South China.

By further comparison, it is inferred that bowl 2006.170.191, tripod vessel 2006.170.197, and lamp 2006.170.200 were likely produced in the Western Han Dynasty, while incense burner 2006.170.202 corresponds to the Eastern Han Dynasty.

Moreover, a hypothesis is developed to explain the possible change in the lead supply network between the Western Han Dynasty and the Eastern Han Dynasty. In the Western Han Dynasty, lead glaze and lead bronze might

share the same lead resources supply network, while in the Eastern Han Dynasty, the lead supply for glaze might gradually become independent from the bronze. The changing patterns of lead resource movement in different periods is also considered. It is speculated that the movement ranges expanded from the Western Han Dynasty to the Tang Dynasty, indicating an improvement in long-distance transportation capabilities.

Lead isotope data help us to learn more about the production and circulation of ancient glazes, shedding light on manufacturing industries in Han Dynasty China. The KDE method used in this study facilitates the quantification of relative probabilities in numerical form, allowing us to identify variations in probability associated with different deposits or groups. This study highlights the contribution that archaeometric results can make to the reconstruction of historical knowledge and the ability of archaeometric evidence to resolve historical and archaeological questions.

Supplementary Information The online version contains supplementary material available at <https://doi.org/10.1007/s12520-024-02096-0>.

Acknowledgements Chen Wang greatly benefits from the financial support from the China Scholarship Council (CSC NO. 202108060012). We appreciate the help of Angela Chang with sampling.

Author contributions C.W. was responsible for the conceptualisation of the study, the analysis and interpretation of the data, the creation of the figures and the writing of the full text. S.D.C. was involved in the design of the coding programs, the modification of the text and figures. K.E. provided the research materials and modified the text. S.L. provided the research materials and modified the text. P.D. was responsible for the coordination of the project, including supervision, the acquisition of materials, the execution of experiments and the implementation of modifications.

Funding Declaration: Chen Wang greatly benefits from the financial support from the China Scholarship Council (CSC NO. 202108060012).

Data availability No datasets were generated or analysed during the current study.

Declarations

Competing interests The authors declare no competing interests.

Open Access This article is licensed under a Creative Commons Attribution 4.0 International License, which permits use, sharing, adaptation, distribution and reproduction in any medium or format, as long as you give appropriate credit to the original author(s) and the source, provide a link to the Creative Commons licence, and indicate if changes were made. The images or other third party material in this article are included in the article's Creative Commons licence, unless indicated otherwise in a credit line to the material. If material is not included in the article's Creative Commons licence and your intended use is not permitted by statutory regulation or exceeds the permitted use, you will need to obtain permission directly from the copyright

holder. To view a copy of this licence, visit <http://creativecommons.org/licenses/by/4.0/>.

References

- Baron S, Day P, Garvey J (2014) How mineralogy and geochemistry can improve the significance of pb isotope in metal provenance studies. *Archaeometry* 56:665–680. <https://doi.org/10.1111/arc.m.12037>
- Chang DX (2019) Study on the Origin of Bohai Kingdom Glazed Pottery. Doctoral dissertation, Nanjing University. (in Chinese)
- Chang D, Ma R, Cui J, Zhang L, Shi Z, Gong G, Lei Y (2021) Circulation of Tang Sancai Wares and lead materials in the two Capital cities of the Tang Empire. *Ceram Int* 47(7):10147–10152. <https://doi.org/10.1016/j.ceramint.2020.12.163>
- Chen YT (2005) Several issues in the study of low-temperature lead-glazed pottery in the Han Dynasty. *Ancient civilization*, vol 4. Cultural Relics Publishing House, pp 303–319. (in Chinese)
- Chen Z (2008) Hanshu new certificate. Zhonghua Book Company, Beijing. (in Chinese)
- Chen D, Luo W, Zeng Q, Cui B (2018) The lead ores circulation in Central China during the early western Han Dynasty: a case study with bronze vessels from the Gejiagou site. *PLoS ONE* 13(11). <https://doi.org/10.1371/journal.pone.0205866>
- Cho N, Huh W, Kim H, Kang H (2007) The characteristics of green glaze on the Yeongmyosaji (Temple) Brick, Gyeongju. *J Honam Archaeol*, 27. (in Korean)
- Cui J, Wu X (2007) Report on the detection of Han Dynasty Mirror molds and bronze mirrors from the Qi State Capital Site in Linzi, Shandong Province. *Archaeological studies on Han Dynasty Mirror molds from the Qi State Capital Site in Linzi, Shandong Province*. Science. (in Chinese)
- Cui JF, Lei Y, Jin ZB, Huang BL, Wu XH (2010) Lead isotope analysis of Tang Sancai pottery glazes from Gongyi kiln, Henan Province and Huangbao kiln, Shaanxi province. *Archaeometry* 52:597–604. <https://doi.org/10.1111/j.1475-4754.2009.00495.x>
- De Ceuster S, Degryse P (2020) A ‘Match - No Match’ numerical and graphical kernel density approach to interpreting lead isotope signatures of ancient artefacts. *Archaeometry* 62. <https://doi.org/10.1111/arc.m.12552>
- De Ceuster S, Machaira D, Degryse P (2023) Lead isotope analysis for provenancing ancient materials: a comparison of approaches. *RSC Adv* 13:19595–19606. <https://doi.org/10.1039/D3RA02763E>
- Dong JQ, Li QH, Liu S (2020) Scientific analysis of some glazed pottery unearthed from Warring States Chu tombs in Jiangling, Hubei Province: indication for the origin of the low-fired glazed pottery in China. *X-Ray Spectrom* 49:538–553. <https://doi.org/10.1002/xrs.3145>
- Du W (2011) Development and summary of ancient Chinese glazed pottery and Museum collections. *Collection* 9:78–80 (in Chinese)
- Frigolè C, le Roux P, Sanhueza L, Lucero G, Falabella F, Cardillo M, Pérez I, Troncoso A, Cornejo L, Riera-Soto C, Barberena R (2024) Multi-isotope approach allows tracking the circulation of ceramics across the Andes (Argentina and Chile). *J Archaeol Science: Rep*, 57
- Galer SJG, Abouchami W (1998) Practical application of lead triple spiking for correction of instrument mass discrimination. *Mineral Mag* 62:491–492
- Henan Provincial Museum (1973) Excavation of three Han tombs in Sijiangou, Jiyuan. *Cult Relics*. doi:CNKI:SUN:WENW.0.1973-02-006. (in Chinese)
- Henderson J, Ma H, Cui J, Ma R, Xiao H (2020) Isotopic investigations of Chinese ceramics. *Archaeol Anthropol Sci* 12(8). <https://doi.org/10.1007/s12520-020-01138-7>
- Hsu YK, Sabatini BJ (2019) A geochemical characterization of lead ores in China: an isotope database for Provenancing Archaeological materials. *PLoS ONE* 14(4). <https://doi.org/10.1371/journal.pone.0215973>
- Hsu YK, Rawson J, Pollard AM, Ma Q, Luo F, Yao PH, Shen CC (2018) Application of kernel density estimates to lead isotope compositions of bronzes from Ningxia, north-west China. *Archaeometry* 60:128–143. <https://doi.org/10.1111/arc.m.12347>
- Huang M, Wu X, Chen X, Tao L, Wu X, Shi M, Li F, Ritchey MM, Huang F, Jin Z (2021) Wuchuan bronzes and cinnabar mining immigrants during the Qin and Han dynasties—new perspectives from typological and lead isotope analysis. *Archaeol Anthropol Sci* 13(2):198. <https://doi.org/10.1007/s12520-021-01455-5>
- Huntley DL, Spielmann KA, Habicht-Mauche JA, Herhahn CL, Flegal AR (2007) Local recipes or distant commodities? Lead isotope and chemical compositional analysis of glaze paints from the Salinas Pueblos, New Mexico. *J Archaeol Sci* 34(7):1135–1147
- Klesner C, Renson V, Akymbek Y, Killick D (2021) Investigation of provenances of early islamic lead glazes from northern Central Asia using elemental and lead isotope analyses. *Archaeol Anthropol Sci* 13:203. <https://doi.org/10.1007/s12520-021-01444-8>
- Lang J, Cui J (2017) Style and origin of glazed pottery Lei unearthed from the Qi tombs in the Warring States period in Linzi—discussion on the origin of lead-glazed pottery in China. *Huaxia Archaeol* 0210.16143/j.cnki.1001-9928.2017.02.009. (in Chinese)
- Li Q, Li Z, Gu D (2016) Archaeological and Technical Study of Western Han Dynasty Lead Barium Glass Chimes (Bianqing) Unearthed from the Jiangdu King’s Mausoleum. In *Cultural Heritage of China: 87–106*. World Scientific. https://doi.org/10.1142/9789814630290_0006
- Li H, Zuo Z, Cui J, Tian J, Yang Y, Yi L, Zhou Z, Fan J (2020) Bronze production in the Ancient Chengdu Plains: a diachronic metallurgical perspective on a separate cultural region. *J Cult Herit* 43:26–36. <https://doi.org/10.1016/j.culher.2019.11.005>
- Li Q, Wei GF, Gao SL, Wang W, Liu JS, Wu XP (2023) Scientific analysis on the Han bronze wares unearthed from Xiangyang, Hubei Province, China. *Archaeol Anthropol Sci* 15:103. <https://doi.org/10.1007/s12520-023-01804-6>
- Luo X (1990) Study on the origins of low-temperature glaze colors. *Ceram Res* 2:36–41 (in Chinese). <https://doi.org/10.16649/j.cnki.36-1136/tq.1990.02.010>
- Luo D, Zheng J (2022) New archaeological progress on lead-glazed pottery kiln sites from the two Han to the Northern and Southern dynasties period since the 21st century. *Cult Relics World*, (09): 112–118. (in Chinese) doi:CNKI:SUN:WWT.D.0.2022-09-015.
- Ma SP (2012) Research on the Lamps of the Han Dynasty. Doctoral dissertation, Fudan University. (in Chinese)
- Ma H, Henderson J, Evans J (2014) The exploration of Sr isotopic analysis applied to Chinese glazes: part one. *J Archaeol Sci* 50:551–558
- Ma D, Wang N, Li P, Yang T, Yang J, Wang RZ, Luo WG (2024) Heterogeneous metal sources for mintage in the early Han empire, second century BCE: archaeometallurgical study of the Banliang coins from the Guanghuacun cemetery, Chengdu, Southwest China. *Archaeol Anthropol Sci* 16:42
- Medeghini L, Fayek M, Mignardi S, Coletti F, Contino A, De Vito C (2020) A provenance study of roman lead-glazed ceramics using lead isotopes and secondary ion mass spectrometry (SIMS). *Microchem J* 154:104519
- Paghi D, Manca R, Casalini M, Chiarantini L, Bragagni A, Tommasini S, Benvenuti M (2024) Tracing the lead source of maiolica: a pilot isotopic study on artefacts from the area of Florence, Italy (fifteenth-nineteenth century). *Eur Phys J Plus* 139:260
- Pernicka E (2014) Provenance determination of archaeological metal objects. In: Roberts BW, Thornton CP (eds) *Archaeometallurgy in*

- Global Perspective: methods and syntheses. Springer, New York, pp 239–268
- Pollard AM, Heron C (2008) Archaeological chemistry, 2nd edition. 2nd ed. Royal Society of Chemistry
- Quan HS (2011) Research on Chinese economic history. Zhonghua Book Company, Beijing
- Rademakers F, Verly G, Somaglino C, Degryse P (2020) Geochemical changes during Egyptian copper smelting? An experimental approach to the Ayn Soukhna process and broader implications for archaeometallurgy. *J Archaeol Sci* 122:105–223. <https://doi.org/10.1016/j.jas.2020.105223>
- Renson V, Jacobs A, Coenaerts J, Mattielli N, Nys K, Claeys P (2013) Using lead isotopes to determine pottery provenance in Cyprus: clay source signatures and comparison with late bronze Age Cypriote pottery. *Geoarchaeology* 28:517–530
- Renson V, BenShlomo D, Coenaerts J, CharbitNataf K, Samaes M, Mattielli N, Nys K, Claeys P (2014) Coupling lead isotope analysis and petrography to characterize fabrics of storage and trade containers from Hala Sultan Tekke (Cyprus). *Archaeometry* 56:261–278
- Renson V, Neff H, Martínez-Cortizas A, Blomster JP, Cheetham D, Glascock MD (2021) Lead and strontium isotopes as tracers for early formative pottery exchange in ancient Mexico. *J Archaeol Sci* 126:105307
- Sasaki T, Shirahata H, Yamasaki K (1994) Lead isotope ratios of the White glazes of the Sherds excavated at A'Ali, an Archaeological Site in Bahrain. *Proc Japan Acad Ser B* 70(1):1–3
- Sheather SJ, Jones MC (1991) A reliable data-based bandwidth selection method for kernel density estimation. *J R Stat Soc Ser B Stat Methodol* 53:683–690. <https://doi.org/10.1111/j.2517-6161.1991.tb01857.x>
- Shen J, Henderson J, Evans J, Chenery S, Zhao F (2018) A study of the glazing techniques and provenances of Tang Sancai glazes using elemental and lead isotope analyses: glazing techniques and provenances of Tang Sancai glazes. *Archaeometry* 61. <https://doi.org/10.1111/arc.12436>
- Shen J, Ma H, Henderson J, Evans J, Chenery S, Wang F, Wen R (2019) Chemical and strontium isotope analysis of Yaozhou Celadon glaze. *Archaeometry* 61:1039–1052. <https://doi.org/10.1111/arc.12482>
- Su BQ (1948) Baoji Douji Taigou East District Tombs (宝鸡斗鸡台沟东区墓葬). North China Research Institute of History, Beijing (北平研究院史学研究所). (in Chinese)
- Tang LY (2011) Research on the unearthed lead-glazed pottery from the two capital cities during the Han Dynasty, Master's Dissertation, Zhengzhou University. (in Chinese)
- Tatsumi J, Furihata J, Cheng F (2011) Lead isotope analyses of ancient Japanese and Chinese lead glazed pottery. *Huaxia Archaeol* 25:148–152 (in Chinese). <https://doi.org/10.16143/j.cnki.1001-9928.2011.02.017>
- Walton P, Tite M (2010) Production technology of roman lead-glazed pottery and its continuance into late antiquity. *Archaeometry* 52:733–759. <https://doi.org/10.1111/j.1475-4754.2009.00506.x>
- Wang CB (2013) Research on the Ceramic Production Techniques of the Han Dynasty. Doctoral dissertation, Jilin University. (in Chinese)
- Wang Y, Tian W (2010) Overview of the development of lead-glazed pottery in the Han Dynasty. *Cult Relics*, (02): 17–23. (in Chinese) doi:CNKI:SUN:WEBO.0.2010-02-006.
- Wang Y, Zhou Y, Yang Z, Cui J (2019) A technological combination of lead-glaze and calcium-glaze recently found in China: scientific comparative analysis of glazed ceramics from Shangyu, Zhejiang Province. *PLoS ONE* 14. <https://doi.org/10.1371/journal.pone.0219608>
- Wang JS, Li JY, Yin TF (2022) Research status and prospects of Han and Tang glazed pottery. *Collect Invest* 13(08):26–28 (in Chinese). <https://doi.org/10.19897/j.cnki.scytz.2022.08.059>
- Wang X, Liu RL, Gao J, Pollard AM, Fan AC, Huang F, Li RL, Zhang SX, Hua FL, Jin ZY (2024) Reconstructing the trade history: provenance study of Han bronze mirrors in and out of Han China. *Archaeol Anthropol Sci* 16:110. <https://doi.org/10.1007/s12520-024-02016-2>
- Wei C, Dong X (2007) Mirror molds of the Han Dynasty in the Qi State City of Linzi and Han Dynasty Copper Mirrors in Shandong Region. Archaeological Research on Han Dynasty Mirror molds in the Qi State City of Linzi, Shandong Province. Science, Beijing. (in Chinese)
- Wei GF, Zhang RX, Shi HY, Wang N (2024) The provenance of copper materials for bronze chariot-horses unearthed from Yang'an Han Tomb in Qionglai, Sichuan Province revealed by the lead isotope analysis and trace elements analysis. *Archaeol Anthropol Sci* 16:65. <https://doi.org/10.1007/s12520-024-01978-7>
- Wolf S, Stos S, Mason R, Tite MS (2003) Lead isotope analyses of islamic pottery glazes from Fustat. *Egypt Archaeometry* 45:405–420
- Wood N (1999) Chinese low-fired glazes, in Chinese Glazes—Their origins, Chemistry and Recreation
- Xie ML (2010) Early Chinese lead-glazed pottery. China New History of Art and Archaeology. Taipei Economic Association Publishing. (in Chinese)
- Xiong YF (2014) Research on the chemical composition of ceramic green glazes in different periods of ancient China. *Chin Ceram* 50(08):87–92 (in Chinese). <https://doi.org/10.16521/j.cnki.issn.1001-9642.2014.08.030>
- Xu YL (2019) Formation of Han culture from the perspective of glazed pottery tombs in the Jianghuai region. Master's thesis, Anhui University. (in Chinese)
- Yang ZF (2005) Structure of Han Tombs and the Types and Changes of Burial Glazed Pottery. Ph.D. thesis, Peking University. (in Chinese)
- Yang D, Wu X, Liu R, Wang Q, Shi B, Qu T, Tian J, Hua F, Zhang X (2023) From diversity to monopoly: major economic policy change in the western Han Dynasty revealed by lead isotopic analysis. *Archaeol Anthropol Sci* 15(37). <https://doi.org/10.1007/s12520-023-01729-0>
- Yu YS (1967) Trade and Expansion in Han China: a study in the structure of sino-Barbarian Economic relations. University of California Press, Berkeley
- Yu J, Teng MY (2008) Subsection of Han dynasties' tombs in the Southern Haihe River within Anhui Province. *Southeast Cult* 6:13–20 (in Chinese) doi:CNKI:SUN:DNWH.0.2008-06-003
- Zhang FK, Zhang ZG (1982) A study of Low-Temperature Colored glazes and Overglaze enamels in China throughout History. Collection of papers on Ancient Chinese ceramics. Cultural Relics Publishing House. (in Chinese)
- Zhangsun Y, Liu R, Jin Z, Pollard A, Lu X, Bray P, Fan A, Huang F (2017) Lead isotope analyses revealed the key role of Chang'an in the mirror production and distribution network during the Han Dynasty. *Archaeometry* 59(4):685–715. <https://doi.org/10.1111/arc.12274>
- Zhao Z, Wei S (2020) On the formation of silver glaze in low-temperature lead-glazed pottery with color change. *Popular Archaeol*, (11): 85–88. (in Chinese) doi:CNKI:SUN:KGDZ.0.2020-11-024.
- Zhu TQ, Wang CS, Mao ZW, Li LX, Huang H (2010) Identification of different Corrosion Covering the surface of Chinese ancient lead glazed potteries. *Spectrosc Spectr Anal* 1:266–269 (in Chinese) doi:CNKI:SUN:GUAN.0.2010-01-072

Publisher's note Springer Nature remains neutral with regard to jurisdictional claims in published maps and institutional affiliations.