



Universiteit
Leiden
The Netherlands

Role of dietary interventions on microvascular health in South-Asian Surinamese people with type 2 diabetes in the Netherlands: a randomized controlled trial

Velden, A.I.M. van der; Ijpelaar, D.H.T.; Shaw, P.K.C.; Pijl, H.; Vink, H.; Vlag, J. van der; ... ; Berg, B.M. van den

Citation

Velden, A. I. M. van der, Ijpelaar, D. H. T., Shaw, P. K. C., Pijl, H., Vink, H., Vlag, J. van der, ... Berg, B. M. van den. (2024). Role of dietary interventions on microvascular health in South-Asian Surinamese people with type 2 diabetes in the Netherlands: a randomized controlled trial. *Nutrition And Diabetes*, 14(1). doi:10.1038/s41387-024-00275-5

Version: Publisher's Version
License: [Creative Commons CC BY 4.0 license](https://creativecommons.org/licenses/by/4.0/)
Downloaded from: <https://hdl.handle.net/1887/4107379>

Note: To cite this publication please use the final published version (if applicable).

ARTICLE OPEN



Role of dietary interventions on microvascular health in South-Asian Surinamese people with type 2 diabetes in the Netherlands: A randomized controlled trial

Anouk I. M. van der Velden^{1,2}, Daphne H. T. Ijpelaar³, Prataap K. Chandie Shaw⁴, Hanno Pijl^{2,5}, Hans Vink^{6,7}, Johan van der Vlag^{8,9}, Ton J. Rabelink^{1,2,9} and Bernard M. van den Berg^{1,2,9}✉

© The Author(s) 2024

BACKGROUND/OBJECTIVES: We investigated whether dietary interventions, i.e. a fasting mimicking diet (FMD, ProLon®) or glyocalyx mimetic supplementation (Endocalyx™) could stabilize microvascular function in Surinamese South-Asian patients with type 2 diabetes (SA-T2DM) in the Netherlands, a patient population more prone to develop vascular complications.

SUBJECTS/METHODS: A randomized, placebo controlled, 3-arm intervention study was conducted in 56 SA-T2DM patients between 18 and 75 years old, for 3 consecutive months, with one additional follow up measurement 3 months after the last intervention. Sublingual microcirculation was assessed with SDF-imaging coupled to the GlycoCheck™ software, detecting red blood cell velocity, capillary density, static and dynamic perfused boundary region (PBR), and the overall microvascular health score (MVHS). Linear mixed models and interaction analysis were used to investigate the effects the interventions had on microvascular function.

RESULTS: Despite a temporal improvement in BMI and HbA1c after FMD the major treatment effect on microvascular health was worsening for RBC-velocity independent PBR_{dynamic}, especially at follow-up. Glyocalyx supplementation, however, reduced urinary MCP-1 presence and improved both PBR_{dynamic} and MVHS_{dynamic}, which persisted at follow-up.

CONCLUSIONS: We showed that despite temporal beneficial changes in BMI and HbA1c after FMD, this intervention is not able to preserve microvascular endothelial health in Dutch South-Asian patients with T2DM. In contrast, glyocalyx mimetics preserves the microvascular endothelial health and reduces the inflammatory cytokine MCP-1.

CLINICAL STUDY REGISTRATION: NCT03889236.

Nutrition and Diabetes (2024)14:17; <https://doi.org/10.1038/s41387-024-00275-5>

INTRODUCTION

Diabetic vascular complications account for an enormous health burden worldwide with various ethnic groups that are more prone to develop such vascular complications [1, 2]. In the Netherlands, people from South-Asian Surinamese descent are characterized by such high vascular vulnerability, resulting in increased prevalence of micro- and macrovascular complications in diabetes [3–5]. At time of diagnosis these higher rates of complications are already found [3, 6, 7] and progression is also much faster compared to other ethnic groups, translating into a 40 times higher risk for end stage renal disease [8] and a 50% higher age-adjusted mortality rate from coronary heart disease [9].

One of the first hallmarks of vascular damage is endothelial dysfunction, which can progress to structural microvascular changes, and eventually result in irreversible vascular damage [10–14]. Upregulation of glyocalyx degrading enzymes and

inflammatory cytokines such as heparanase-1 (HPSE-1) and monocyte chemoattractant-1 (MCP-1) augments endothelial dysfunction by impairing the endothelial glyocalyx (EG), a mesh of glycosaminoglycans (GAGs), proteoglycans, glycoproteins and glycolipids on the apical side of endothelial cells [15]. Next to conventional therapeutic options, preserving endothelial function in South Asian patients with T2DM (SA-T2DM) could prevent or reduce the fast progression of vascular complications through inhibiting glyocalyx degrading enzymes or reducing metabolic risk factors that contribute to glyocalyx degradation.

Intermittent fasting or fasting mimicking diets (FMD) have been shown to be able to induce cellular changes that affect inflammation and cellular protection [16–21]. A study of T2DM patients with micro-albuminuria showed that FMD could be conducted safely and showed beneficial effects on albuminuria [22]. Recently, we revealed in an experimental diabetic study that

¹Department of Internal Medicine (Nephrology), Leiden University Medical Center, Leiden, The Netherlands. ²Eindhoven Laboratory of Vascular and Regenerative Medicine, LUMC, Leiden, The Netherlands. ³Department of Internal Medicine and Nephrology, Green Heart Hospital, Gouda, The Netherlands. ⁴Department of Internal Medicine and Nephrology, Haaglanden Medical Center, The Hague, The Netherlands. ⁵Department of Internal Medicine (Endocrinology), LUMC, Leiden, The Netherlands. ⁶Department of Physiology, Cardiovascular Research Institute Maastricht, Maastricht, The Netherlands. ⁷MicroVascular Health Solutions LLC, Alpine, Utah, USA. ⁸Department of Nephrology, Radboud University Medical Center, Nijmegen, The Netherlands. ⁹These authors jointly supervised this work: Johan van der Vlag, Ton J. Rabelink, Bernard M. van den Berg.

✉email: bmvdenberg@lumc.nl

Received: 17 October 2023 Revised: 25 March 2024 Accepted: 3 April 2024

Published online: 10 April 2024

repeated FMD partially preserved the glomerular endothelial glycocalyx coverage, however, perturbing glomerular metabolic responses [23]. Also a new promising dietary intervention through supplementation with GAG mimetics such as fucoidan, a marine organism-derived fucosylated and sulfated polysaccharide and major constituent of Endocalyx™, has been shown to preserve the EG layer [24, 25].

Here, we investigated the effects of these two dietary interventions, repeated FMD cycles or Endocalyx™ supplementation in SA-T2DM in a multi-arm randomized controlled study. We hypothesized that dietary intervention is able to preserve endothelial stability and in turn preserve microvascular health.

For this, microvascular health was assessed on the sublingual microvasculature with the non-invasive side-stream darkfield (SDF) imaging method with newly developed and validated Glycocheck™ software [26, 27]. In addition, besides demographics, medication use, blood pressure and laboratory markers for diabetes and renal function testing, we measured the HPSE-1 and hyaluronidase 1 (HYAL-1) activity, and HYAL-4 activity and concentration, together with the endothelial activation markers angiotensin-2 (ANG2), soluble thrombomodulin (sTM) and MCP-1.

RESEARCH DESIGN AND METHODS

Clinical study design and patient recruitment

We conducted a multi-arm parallel-group randomized study in SA-T2DM of Surinamese descent in The Hague area of the Netherlands between May 2018 and September 2020, recruited at general practitioners' offices. In this study 3 parallel arms were selected: 1) receiving a diet regime of FMD boxes (Prolon®, L-Nutra Inc., Los Angeles, CA, USA); 2) receiving the dietary supplement Endocalyx™ (Microvascular Health Solutions LLC, Alpine, UT, USA); or 3) receiving placebo capsules (Fig. 1A). For sample size estimation the primary outcome was determined as improvement of the Microvascular Health Index MVHS_{dynamic} according to a pilot study with 13 healthy volunteers receiving the food supplement Endocalyx™ for 3 consecutive months (supplementary Fig. 1). Eligible patients, with inclusion criteria of age between 18 and 75 years old, self-identified as from South-Asian Surinamese descent, treatment with hypoglycemic drugs for type 2 diabetes and proven albuminuria with an albumin to creatinine ratio (ACR) between 0.3 and 30 mg/mmol in the last 12 months. Moreover, eGFR had to be above 45 mL/min/1.73 m² (CKD-EPI formula [28]). The study (NCT03889236) was conducted in accordance with the Declaration of Helsinki (October 2013) and approved by the Ethics Committee of the Leiden University Medical Center (LUMC) in agreement with the Dutch law for medical research involving human subjects.

Intervention, randomization and blinding

Eligible patients were randomized via randomization envelopes made by the Pharmacy department of the LUMC into the diet-, supplement-, or placebo-arm, after given informed consent (Fig. 1). In agreement with the CONSORT statement, randomisation was performed to provide blinding of the supplement and placebo arm to the participants, care providers and researchers. The Pharmacy department redistributed, labeled and blinded the capsules.

FMD (Prolon®) consisted of a 5-day low protein plant-based diet regime that contained energy bars, vegetable-based soups, kale chips, olives, energy drinks, a supplement and natural tea's. Day 1 provided 1090 kcal (containing 34% carbohydrate, 56% fat and 10% protein), and days 2 to 5 were identical in formulation and provided 725 kcal (47% carbohydrate, 44% fat and 9% protein). As previous studies with this diet showed beneficial effects after 3 monthly cycles [16], our patients also followed the diet once a month, with a total of 3 cycles in 3 months. Trajectory patients' satisfaction about FMD intervention was reviewed with the

Diabetes Treatment Satisfaction Questionnaire (DTSQ) [29]. Endocalyx™ supplement was produced and provided by Microvascular Health Solutions (Alpine, UT, USA). One capsule contained fucoidan extracted from *Laminaria japonica* (106.25 mg), glucosamine sulphate (375.0 mg), hyaluronic acid (17.5 mg), a blend of superoxide dismutase and polyphenols (120.0 mg) and stabilizers/bulking agents. The placebo capsules were manufactured by the Pharmacy department of the LUMC and contained microcrystalline cellulose. Patients were instructed to take 4 capsules a day for 3 consecutive months. Patients received no dietary advice and maintained their normal diet during the study.

Data collection

Study visits were conducted at the general practitioner's office of that specific patient and were executed by the researcher or research assistants. The web based relational database management system Castor Electronic Data Capture (EDC) (<https://www.castoredc.com>) was used for data storage. Patients were instructed to fast overnight and not to smoke before each study visit. In the first three months, patients had a study visit each month. After completing the first 3 months of the intervention, the interventions were discontinued, and patients had one follow-up study visit at month 6 (Fig. 1A).

At baseline, self-identified ethnicity, age and smoking status were collected. Medical history and medication use was extracted from the personal health records. Microvascular complications were defined as having retinopathy and/or neuropathy. Macrovascular complications were defined as having myocardial infarction, angina pectoris, cerebrovascular accident and/or peripheral artery disease.

Systolic and diastolic BP was measured twice with an automated blood pressure monitor (OMRON, Model M6, Omron Health Care Inc, IL, USA) after patients were sitting calmly for about 5 min. BMI was calculated by dividing the weight (measured with indoor clothing but without shoes) in kilograms by the self-reported height in meters squared. Waist circumference was measured with a measuring tape mid-way between the lower costal margin and the iliac crest. Fasting blood glucose levels were measured with a finger prick blood sample (Accu-check Aviva, Roche, Basel, Swiss).

Blood samples were collected after overnight fast at the morning of the study visit at baseline, 3- and 6 months through vena puncture. Serum levels of C-peptide, Insulin growth factor 1 (IGF-1), creatinine, high sensitivity C-reactive protein (hsCRP), total cholesterol, high-density lipoprotein cholesterol, triglycerides levels and plasma levels of HbA1c were determined in the central clinical chemistry laboratory of the LUMC using standard assays. Low-density lipoprotein cholesterol was calculated using the Friedewald formula [30]. The CKD-EPI formula was used to estimate the glomerular filtration rate [28].

Plasma HPSE-1 (heparan sulfate, HS degradation) activity (Takara Bio Inc., Shiga, Japan), HYAL-1 [31] (chondroitin sulfate/hyaluronan, CS/HA) and HYAL-4 [32] (CS) activity in-house developed ELISA [33], optimized by use of recombinant active human HYAL-1 or HYAL-4 (7358-GH-020 and 6904-GH-020, Biotechne, Abingdon, UK). HYAL-4 protein was measured (AMS Biotechnology, Abingdon, UK) according to the manufacturer's instructions. Plasma levels of ANG2 (DANG20, R&D Systems, Abingdon, UK) and sTM (850.720.096, Diaclone, Besançon, France) were determined as described [32], and measured according to the protocol supplied by the manufacturer.

On the day of study visit, first morning urine was collected to determine albumin and creatinine (CCL, LUMC), albumin-creatinine ratio (ACR) was calculated and for albumin levels lower than 3.0 mg/mL (displayed as <3.0 by CCL), 2.9 was used for ACR calculation. Urinary HPSE-1 activity and MCP-1 concentration were measured (Takara Bio Inc., Shiga, Japan and R&D Systems Europe, Ltd., Abingdon, UK, resp.) according to manufacturer's protocols and corrected for creatinine concentration.

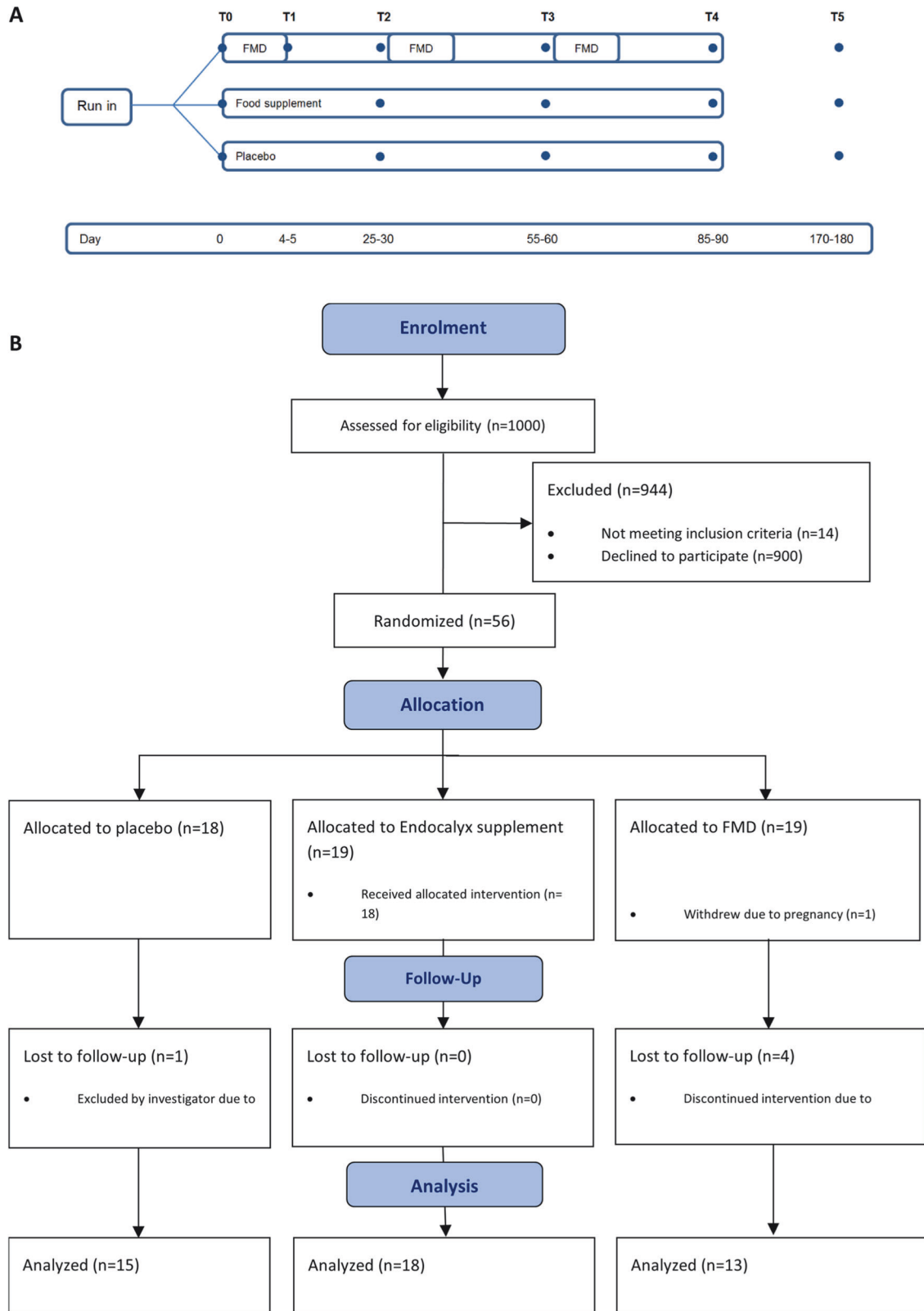


Fig. 1 Study design and patient inclusion. Study design (A) and CONSORT Flow diagram (B).

Microvascular imaging

Sublingual microcirculation was assessed with SDF-imaging (CapiScope HVCS, KK Technology, Honiton, UK) coupled to the GlycoCheck™ software (Microvascular Health Solutions Inc., Salt Lake City, UT, USA). Image acquisition was automatically mediated

through the Glycocheck™ software as described elsewhere [26, 27, 34]. The GlycoCheck™ software detects and extracts the following microvascular parameters: red blood cell velocity (V_{RBC}), perfused capillary density, static and dynamic capillary blood volume (CBV), static and dynamic perfused boundary region (PBR),

and the overall microvascular health score (MVHS), validated and described earlier [27, 35].

Glucose monitoring and diet compliance

To minimize the occurrence of hypoglycemia during the diet cycles, dosages of hypoglycemic medications were temporarily altered during the 5 day diet cycle. Sulfonylurea derivatives and short acting insulin were discontinued, long acting insulin 50% reduced, with fasting glucose monitoring on days 6, 7 and 8. Metformin, DPP4 inhibitors, SGLT-2 inhibitors or GLP-1 agonists were continued during the diet cycle. Compliance was checked on the morning of day 5 of the first FMD cycle by measuring fasting ketone body concentration in blood (CareSens Dual, Zkope Healthcare, Sittard, Netherlands) and with ketone sticks in a fresh morning urine sample (Ketostix, Bayer, Leverkusen, Germany). During the cycles patients were contacted by the investigator to check glucose monitoring and compliance with the diet.

Clinical data and resource availability

Most of the data generated or analyzed during this study are included in the published article (and its online supplementary files). The remainder clinical data generated during and/or analyzed during the current study are not publicly available due to hospital privacy restrictions but can be made available as anonymized data from the corresponding author upon reasonable request.

Statistical analysis

The primary endpoint was improvement of microvascular function within 3 months as determined with SDF-imaging (capillary density, CBV, PBR and MVH). Secondary endpoints were improvement in clinical parameters (BP, BMI, waist-to-hip ratio), laboratory markers (ACR, fasting glucose, HbA1c, C-peptide, IGF-1, total cholesterol, LDL cholesterol, HDL cholesterol, triglycerides, hsCRP, HPSE-1, HYAL-1, HYAL-4, ANG2, sTM and MCP-1). Potential legacy effects were determined using the microvascular and clinical parameters, 3 months after discontinuation (at month 6).

Continuous variables with normal distribution were presented as mean with standard deviation (SD) and variables with skewed distribution as median with 25–75 percentile. Categorical data were expressed as proportions.

Treatment effects within and between groups (diet vs. placebo and supplement vs. placebo, respectively) were investigated with intention to treat analysis by linear mixed models for repeated measurements with Bonferroni post hoc test (values expressed as estimated marginal means (SE) or estimated mean differences with 95% CI). The models were adjusted for age, gender, microvascular and macrovascular history at baseline and hypertension at baseline as this can influence microvascular function. For the per protocol analysis, delta changes within 3 months intervention were compared between the intervention groups with an unpaired *t* test.

Results from the DTSQ questionnaire (see supplementary data) were compared between FMD and placebo groups with an unpaired *t* test.

Statistical analysis was performed using SPSS version 25 (SPSS Inc., Chicago, IL, USA) and GraphPad Prism version 8 (Graphpad Inc., La Jolla, CA, USA). A significance level of 0.05 was considered statistically significant.

RESULTS

Inclusion and drop-outs

A total of 56 patients were included and randomized (see CONSORT diagram in Fig. 1), 19 in FMD group, 19 in Endocalyx group and 18 patients in placebo group. In FMD group, one patient withdrew due to pregnancy at the start of the study and one patient withdrew during the baseline visit due to anxiety for the venipunctures. 3 Patients discontinued due to adverse events

or non-adherence during or after the first diet cycle and one patient was withdrawn by the investigator due to an SAE after the first diet cycle. A total of 13 patients completed the 3 diet cycles and the follow-up study visit at month 6 (Fig. 1). In Endocalyx group, 19 patients were randomized and completed the baseline measurement. One patient did not start due to the COVID-19 pandemic, which resulted in 18 patients completing the 3-month intervention and follow-up. In the placebo group, 2 patients withdrew informed consent before the baseline visit and one patient was withdrawn by the investigator after the baseline measurements due to an eGFR below the inclusion criteria threshold. A total of 15 patients completed the 3 months placebo intervention and 14 patients completed the follow-up study visit at month 6, as one patient migrated to Surinam. Due to the COVID-19 pandemic all inclusions had to stop, preventing completion of the estimated number of patients per group.

Baseline characteristics of the study population

Baseline characteristics of FMD- ($n = 18$), Endocalyx- ($n = 19$) and placebo group ($n = 16$) and total cohort ($n = 53$) are shown in Table 1. Overall, baseline characteristics were almost similar between both dietary intervention groups and placebo group, except mean age in Endocalyx group was younger and mean duration of diabetes mellitus was higher in FMD group compared to placebo group. Several patients in all groups had prevalent micro- or macrovascular diabetes complications. All patients used various combinations anti-diabetes medication. More than half of the patients used antihypertensive medication, of which a large number used renin-angiotensin-aldosterone system (RAAS) inhibitors. Despite this, percentage of patients with hypertension (according to the AHA guidelines ≥ 130 mmHg systolic or ≥ 80 mmHg diastolic) was around 89% (FMD), 58% (Endocalyx) and 72% (placebo).

Mean BMI was high in all groups, 28.8 ± 5.5 kg/m² (FMD), 30.1 ± 4.7 kg/m² (Endocalyx) and 27.4 ± 4.3 kg/m² (placebo). In general, patients were well regulated as reflected by the average low HbA1c levels. The placebo group had the highest number of patients with albuminuria in the past 12 months ($n = 7$) compared to FMD ($n = 1$) and Endocalyx ($n = 4$).

Microvascular health in placebo group

First, when combining all baseline data (FMD, Endocalyx and placebo) of measured capillary densities, the percentage capillary density difference in patient group was lower when compared to our earlier published Framingham risk groups in the Netherlands Epidemiology of Obesity (NEO) study (supplementary Fig. 2) [26]. These results reflect the already poor perfused capillary network in South Asian patients with T2DM, compared to the general Dutch population. As the patients in the placebo group did not receive any dietary restrictions it was used as a control for both the dietary interventions. Using linear mixed model analysis adjusted for age and sex revealed that besides the perturbed anatomic vascular structures, endothelial health (PBR, as the inverse glycoalyx dimension) and overall microvascular health score (MVHS_{dynamic}) worsened over time in the placebo group (Table 2, supplementary Fig. 3A and supplementary Table 1) [27].

FMD effect on microvascular health

During the monthly 5-day diet cycle, daily glucose measurements (self-measurement) resulted in 2 reported occurrences of hypoglycemia (< 4.0 mmol/L) upon continued use of SU-derivates or long acting insulin, of which one patient discontinued due this occurrence of hypoglycemia. Overall, patients experienced less of the time the feeling of hyper- or hypoglycemia after the diet cycles (DTSQ questionnaire, supplementary Table 2). On day 5 of the first diet cycle, in only 3 of 15 patients, ketone bodies could be detected in urine and in 5 patients (of 13) capillary ketone levels of ≥ 0.5 mmol/L (ketosis) were detected.

Table 1. Baseline characteristics of the study population.

	Placebo (n = 16)	Diet (n = 18)	Supplement (n = 19)	Total (n = 53)
Demographics				
Age, years (SD)	63 (±7)	61 (±6)	56 (±7)	60 (±7)
Women, n (%)	7 (44)	12 (67)	12 (63)	31 (59)
Current tobacco smoking, n (%)	5 (31)	4 (22)	6 (32)	15 (28)
Medical history				
Duration diabetes mellitus, years (SD)	7 (±5)	11 (±4)	9 (±5)	9 (±5)
Retinopathy, n (%)	4 (25)	10 (56)	5 (26)	19 (36)
Neuropathy, n (%)	1 (6)	2 (11)	4 (21)	7 (13)
Coronary artery disease, n (%)	4 (25)	3 (16)	2 (11)	9 (17)
Angina pectoris, n (%)	4 (25)	2 (11)	1 (5)	7 (13)
CVA/TIA, n (%)	3 (19)	0	4 (21)	7 (13)
Medication use				
Metformin, n (%)	16 (100)	17 (94)	19 (100)	52 (98)
DPP4 inhibitor/GLP-1-RA/SGLT2 antagonist, n (%)	2 (13)	3 (17)	3 (16)	8 (15)
Sulfonylurea derivatives, n (%)	3 (19)	9 (50)	9 (47)	21 (40)
Insulin, n (%)	2 (13)	3 (17)	3 (16)	8 (15)
Anti-hypertensive medication, n (%)	11 (61)	12 (67)	12 (63)	35 (66)
RAAS inhibitors (n)	10 of 11	10 of 12	10 of 12	30 of 35
Statins, n (%)	12 (75)	16 (89)	16 (84)	44 (83)
Blood pressure				
Systolic blood pressure, mmHg (SD)	139 (±16)	148 (±19)	132 (±15)	140 (±18)
Diastolic blood pressure, mmHg (SD)	86 (±9)	87 (±10)	82 (±11)	85 (±10)
Hypertension ^a , n (%)	13 (72)	16 (89)	11 (58)	40 (76)
BMI, kg/m ² (SD)	27.4 (±4.3)	28.8 (±5.5)	30.1 (±4.7)	28.8 (±4.9)
Laboratory markers				
Fasting glucose, mmol/L (range)	7.3 (±1.6)	7.6 (±1.7)	8.3 (±2.2)	7.8 (±1.9)
HbA1c, % (range)	6.8 (6.5–8.0)	7.2 (7.0–7.7)	7.2 (6.8–7.9)	7.2 (6.7–7.8)
mmol/mol (range)	51 (47–63)	56 (50–60)	56 (51–62)	55 (50–61)
Total cholesterol, mmol/L (SD)	3.9 (±0.7)	4.4 (±0.8)	4.4 (±1.1)	4.3 (±0.9)
hsCRP, mg/L (range)	1.6 (0.8–5.2)	2.1 (0.9–5.0)	4.7 (2.9–8.1)	3.2 (1.0–4.7)
eGFR CKD-EPI (ml/min/1.73m ²)	80 (±17)	84 (±19)	85 (±19)	83 (±18)
Urinary markers				
Albumin/creatinine ratio (mg/mmol)	1.8 (0.9–3.2)	1.0 (0.6–1.6)	1.0 (0.6–3.9)	1.1 (0.6–2.4)
Normo-albuminuria ^b , (n, %)	9 (56)	17 (94)	15 (79)	41 (77)
Micro-albuminuria at baseline ^c (n, %)	7 (44)	0 (0)	3 (16)	10 (19)
Macro-albuminuria at baseline ^d (n, %)	0 (0)	1 (6)	1 (5)	2 (4)

Data is presented as mean (SD), median (25–75 percentile) or number with percentage.

CVA/TIA cerebrovascular event/transient ischemic attack, DPP4 dipeptidyl peptidase-4, GLP-1-RA glucagon-like peptide-1 receptor agonist, SGLT2 sodium-glucose cotransporter 2, RAAS renin-angiotensin-aldosterone system, BMI body mass index, HbA1c hemoglobin A1c, hsCRP high sensitivity c-reactive protein, eGFR CKD-EPI estimated glomerular filtration rate according to chronic kidney disease epidemiology collaboration

^aAccording to the AHA guidelines ≥ 130 mmHg systolic or ≥ 80 mmHg diastolic.

^bAlbumin-creatinine ratio between < 3.0 mg/mmol. ^cAlbumin-creatinine ratio between 3.0–30 mg/mmol. ^dAlbumin-creatinine ratio > 30 mg/mmol.

Intention to treat analysis using linear mixed model analysis adjusted for age, sex, microvascular or macrovascular complications at baseline and hypertension revealed that after 3 months of recurrent FMD, 3 weeks after last cycle, only PBR_{dynamic} significantly increased (estimated mean difference 0.32 μ m (95% CI 0.18–0.50; Table 2). Treatment effects between FMD and placebo groups revealed significant differences within 3 months for CBV_{dynamic}, PBR_{static} and MVHS_{dynamic} (Table 2). This was also shown with the per protocol analysis showing the delta differences in microvascular parameters between FMD and placebo in Fig. 2.

While BP, fasting glucose, hsCRP and cholesterol levels were not affected after the diet cycles, mean BMI and serum HbA1c levels were significantly lower compared to baseline with an estimated difference of -1.0 kg/m² (95% CI -1.5 – 0.5) and -5.1 nmol/L (95% CI -9.6 – 0.6), respectively. Markers related to glycoalyx degradation (HPSE-1) and endothelial and glycoalyx shedding markers (ANG2 and sTM) were not affected (Table 3).

The follow-up measurements at month 6 revealed that BMI was still lower compared to baseline, with a difference of -0.6 kg/m² (95% CI -1.2 – 0.00). However the effect on HbA1c was lost after 6 months compared to baseline with a difference of -1.8 mmol/mol

Table 2. Differences between baseline and after 3 months in the interventions groups and treatment effects.

	Placebo			Diet			Supplement		
	Baseline (n = 16)	3 months (n = 15)	Difference [95% CI] ^a	Baseline (n = 18)	3 months (n = 13)	Difference [95% CI] ^a	Baseline (n = 19)	3 months (n = 17)	Difference [95% CI] ^a
Microvascular parameters									
Capillary density (4-6) ($\mu\text{m}/\text{mm}^2$)	43 (6)	34 (4)	-9 [-23;4]	32 (6)	24 (4)	-7 [-20;6]	32 (5)	35 (3)	3 [-10;15]
Capillary blood volume static (pL/mm^2)/ $10^3 \mu\text{m}^3$	12.7 (1.7)	9.9 (1.1)	-2.8 [-6.6;1.3]	10.1 (1.7)	8.1 (1.2)	-2.1 [-6.1;2.0]	10 (1.5)	10.9 (1)	1.0 [-2.8;4.7]
Capillary blood volume dynamic (pL/mm^2)/ $10^3 \mu\text{m}^3$	21.6 (2.5)	11.3 (1.4)	-10.3 [-16.2;-4.3]	11.8 (2.5)	14 (1.6)	2.2 [-3.7;8.1]	14.7 (2.3)	13.9 (1.3)	-0.8 [-6.2;4.7]
PBR static (μm)	2.08 (0.05)	2.24 (0.05)	0.16 [0.03;0.28]	2.26 (0.05)	2.2 (0.06)	-0.05 [-0.19;0.08]	2.21 (0.04)	2.18 (0.05)	-0.04 [-0.16;0.08]
PBR dynamic (μm)	2.19 (0.05)	2.46 (0.05)	0.28 [0.15;0.40]	2.35 (0.05)	2.66 (0.06)	0.32 [0.18;0.50]	2.74 (0.04)	2.01 (0.05)	-0.73 [-0.85;-0.61]
MVHS dynamic (μm)	3.9 (0.5)	1.8 (0.3)	-2.1 [-3.2;-1.1]	2.1 (0.5)	2.1 (0.3)	0 [-1.0;1.1]	2.2 (0.4)	2.8 (0.2)	0.7 [-0.3;1.7]
Clinical parameters									
Systolic blood pressure (mmHg)	132 (4)	136 (4)	4 [-5;13]	141 (4)	134 (4)	-7 [-16;3]	133 (3)	130 (3)	-3 [-11;5]
Diastolic blood pressure (mmHg)	82 (2)	82 (2)	1 [-5;6]	81 (2)	80 (2)	-2 [-7;4]	80 (2)	81 (2)	1 [-4;5]
BMI (kg/m^2)	26.4 (1.3)	26.4 (1.2)	0 [-0.5;0.4]	28.3 (1.3)	27.3 (1.3)	-1.0 [-1.5;-0.5]	30.2 (1.1)	30.3 (1.1)	0.1 [-0.3;0.6]
Laboratory markers									
Fasting glucose (mmol/L)	7.3 (0.5)	7.1 (0.6)	-0.1 [-1.4;1.1]	7.2 (0.5)	7.1 (0.6)	-0.2 [-1.5;1.1]	8.3 (0.4)	8.1 (0.5)	-0.2 [-1.3;1]
Hba1c (mmol/mol)	55.6 (3.3)	55.9 (3)	0.4 [-3.9;4.6]	55.3 (3.4)	50.3 (3.3)	-5.1 [-9.6;-0.6]	57.9 (2.9)	60.2 (2.7)	2.3 [-1.7;6.3]
C-peptide (nmol/L)	1.2 (0.1)	1.2 (0.1)	0 [-0.2;0.2]	1.4 (0.1)	1.3 (0.1)	-0.1 [-0.3;0.1]	1.5 (0.1)	1.5 (0.1)	0.1 [-0.1;0.2]
eGFR CKD-EPI ($\text{mL}/\text{min}/1.73\text{m}^2$)	86 (5)	84 (5)	-2 [-8;5]	83 (5)	81 (5)	-2 [-9;5]	80 (4)	83 (4)	3 [-2;9]
Total cholesterol (mmol/L)	4.03 (0.23)	4.12 (0.26)	0.09 [-0.33;0.51]	4.34 (0.24)	4.21 (0.28)	-0.13 [-0.58;0.32]	4.35 (0.2)	4.34 (0.23)	0 [-0.39;0.38]
HDL-cholesterol (mmol/L)	1.27 (0.08)	1.35 (0.09)	0.08 [-0.01;0.18]	1.22 (0.08)	1.23 (0.09)	0.01 [-0.09;0.11]	1.08 (0.07)	1.07 (0.08)	-0.01 [-0.09;0.08]
LDL-cholesterol (mmol/L)	2.34 (0.2)	2.32 (0.2)	-0.02 [-0.33;0.29]	2.4 (0.21)	2.31 (0.21)	-0.09 [-0.42;0.24]	2.41 (0.18)	2.43 (0.18)	0.02 [-0.27;0.31]
Triglycerides (mmol/L)	1.11 (0.5)	1.19 (0.33)	0.07 [-0.6;0.75]	1.65 (0.5)	1.77 (0.35)	0.12 [-0.56;0.8]	2.31 (0.45)	2.09 (0.29)	-0.22 [-0.84;0.4]
hsCRP (mg/L)	4.0 (1.1)	3.0 (1.0)	-1.1 [-2.8;0.6]	3.6 (1.1)	2.9 (1.1)	-0.7 [-2.4;1.1]	6.0 (1.0)	6.2 (0.9)	0.2 [-1.3;1.8]
IGF-1 (nmol/L)	18.3 (1.3)	17.9 (1.2)	-0.4 [-2.6;1.8]	17.9 (1.4)	19.6 (1.3)	1.6 [-0.7;3.9]	17.1 (1.2)	16.5 (1.1)	-0.6 [-2.7;1.4]

Abbreviations: PBR perfused boundary region, MVHS microvascular health score, BMI body mass index, HDL high density lipoprotein, LDL low density lipoprotein, Hba1c hemoglobin A1c, eGFR CKD-EPI estimated glomerular filtration rate according to chronic kidney disease epidemiology collaboration, hsCRP high sensitivity c-reactive protein, IGF-1 Insulin growth factor 1, ns non-significant; Estimated marginal means with standard error.

^aLinear mixed models adjusted for age, sex, microvascular history at baseline and hypertension at baseline with Bonferroni post-hoc, baseline compared to 3 months, ^binteraction term of the groups with measurement over time (Baseline-3 months), $p < 0.05$ is considered significant (**bold**).

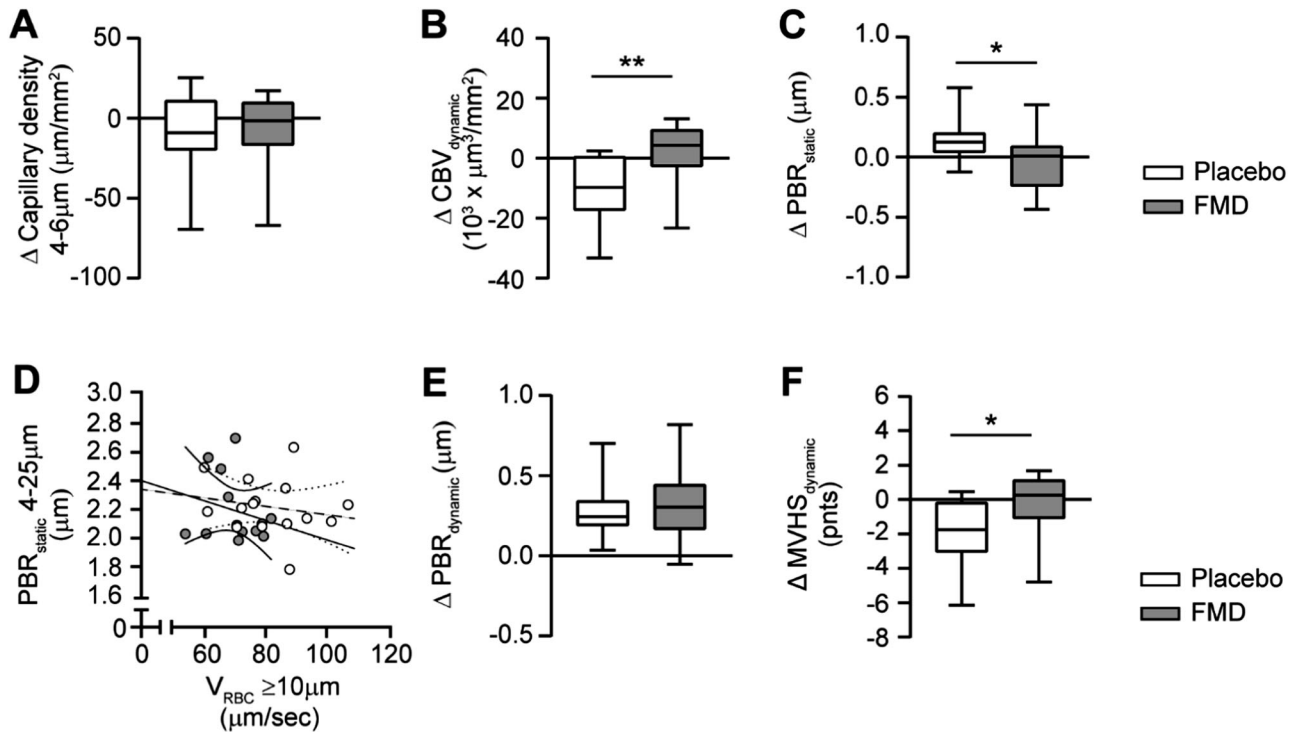


Fig. 2 Changes in microvascular parameters upon FMD treatment. Comparison of changes within 3 months intervention between the diet and placebo group of **A** Capillary density, **B** Dynamic capillary blood volume ($CBV_{dynamic}$) and **C** Static perfusion boundary region (PBR_{static}), **D** Scatter dot plots and simple linear regression (slope) with 95% confidence intervals of PBR_{static} plotted against red blood cell velocity (V_{RBC}) in feed vessels. Comparison of changes after 3 months intervention between diet (continuous line) and placebo (dashed line) of **E** dynamic perfusion boundary region ($PBR_{dynamic}$) and **F** dynamic Microvascular Health Score ($MVHS_{dynamic}$). Box plot whiskers indicate 5th and 95th percentiles. Delta changes were compared between the diet and placebo group with an unpaired t-test. * $P < 0.05$, ** $P < 0.01$.

(95% CI -6.2 – 2.8) (supplementary Table 1). In contrast, $PBR_{dynamic}$ was increased with a positive linear regression slope (supplementary Fig. 3B) arguing for a continued adverse effect on endothelial function.

Endocalyx effects on microvascular health

After 3 months of daily supplementation with Endocalyx, a significant improvement in the $PBR_{dynamic}$ (estimated difference of -0.73 μm ; 95% CI -0.85 – -0.61) and $MVHS_{dynamic}$ of 0.7 points (95% CI -0.3 – 1.7) was seen, while capillary density, CBV and PBR_{static} did not change significantly (Table 2). Treatment effects between Endocalyx and placebo groups for the intention to treat and per protocol analysis showed to be significant for $CBV_{dynamic}$, PBR_{static} , $PBR_{dynamic}$ and $MVHS_{dynamic}$ confirming an overall improvement in vascular health after 3 months of glycoalyx mimetics supplementation (Fig. 3 and Table 2). The follow-up measurements at month 6 revealed a continuation in improved microvascular health (supplementary Fig. 3C and supplementary Table 1).

Markers related to glycoalyx degradation (HPSE-1, HYAL-1 and HYAL-4) and endothelial and glycoalyx shedding markers (ANG2 and sTM), however, were not affected (Table 3). Overall, ACR did not significantly change (estimated difference of -2.6 mg/mmol , 95% CI -7.2 – 1.9), although in two patients with the highest baseline ACR (28.8 and 37.7 mg/mmol , respectively) albuminuria decreased to normo-albuminuric levels after 3 months of Endocalyx. Within this group, urinary MCP-1 activity did not significantly change within 3 months (estimated difference of -13.4 ng/mmol with 95% CI -38.3 – 11.5), although compared to placebo urinary MCP-1 activity was significantly different ($p = 0.05$) (Table 3). No significant changes in other clinical or laboratory parameters were observed (Table 2).

DISCUSSION

We evaluated the effect of 2 short-term dietary interventions on microvascular endothelial health in SA-T2DM. Overall, we found that capillary density in this patient population was already lower than expected compared to earlier measurements within the NEO study [26], and seems in line with the observed existing cardiovascular problems these patients are facing [3]. We also observed in the placebo that during the first 3 months microvascular parameters worsened.

After 3 recurrent FMD cycles, $PBR_{dynamic}$ alone increased, which continued to worsen at 3 months after the last diet cycle. We observed a significant reduction in plasma HbA1c levels and BMI in the first 3 months and the effect on BMI was still present after discontinuation of FMD.

Supplementation with Endocalyx for 3 months, however, showed an improvement in the microvascular parameters $CBV_{dynamic}$, PBR_{static} , $PBR_{dynamic}$ and $MVHS_{dynamic}$ which was also reflected in the linear regression slopes (PBR_{static} vs. V_{RBC}). Even 3 months after the intervention this effect was still present, indicating a possible legacy effect. Interestingly, we found improvement of albuminuria in 2 patients in this group which was accompanied by an improved PBR. The observed significantly reduced urinary MCP-1 activity after 3 months, however, was lost at follow-up. No effect on the other clinical or laboratory markers were observed upon Endocalyx supplementation.

Although in early diabetic nephropathy inhibition of HPSE-1 activity has been shown to protect the endothelial glycoalyx and to prevent development of proteinuria [15, 36], we could not demonstrate this effect in the present study. Following this study, we recently observed ethnic differences in urinary HPSE-1 and MCP-1 activity in individuals with T2DM from the HELIUS study [37]. Interestingly, the South-Asian Surinamese participants

Table 3. Differences between baseline and after 3 months in the interventions groups and treatment effects.

	Placebo			Diet			Supplement				
	Baseline (n = 16)	3 months (n = 15)	Difference [95% CI] ^a	Baseline (n = 18)	3 months (n = 13)	Difference [95% CI] ^a	Baseline (n = 19)	3 months (n = 17)	Difference [95% CI] ^a	Treatment effect diet ^b	Treatment effect supplement ^b
Glycocalyx plasma markers											
HPSE-1 activity, plasma (U/mL)	1.04 (0.16)	1.54 (0.19)	0.50 [-0.01;1.00]	1.33 (0.17)	1.46 (0.21)	0.12 [-0.41;0.65]	1.27 (0.14)	1.54 (0.17)	0.28 [-0.18;0.74]	0.21	0.43
HYAL-1 activity (U/mL)	0.56 (0.02)	0.54 (0.01)	-0.01 [-0.06;0.03]	N/A	N/A	N/A	0.48 (0.02)	0.52 (0.01)	0.04 [-0.01;0.07]	N/A	0.05
HYAL-4 activity (U/mL)	25.10 (2.92)	21.47 (2.6)	-3.63 [-8.78;1.52]	N/A	N/A	N/A	17.82 (2.51)	17.55 (2.17)	-0.27 [-4.87;4.33]	N/A	0.23
HYAL-4 protein (ng/mL)	3.45 (0.41)	3.51 (0.39)	0.07 [-0.27;0.41]	N/A	N/A	N/A	2.79 (0.35)	2.61 (0.33)	-0.17 [-0.48;0.13]	N/A	0.19
ANG-2 protein (ng/mL)	2.47 (0.24)	2.40 (0.21)	-0.06 [-0.39;0.27]	2.77 (0.24)	2.59 (0.23)	-0.18 [-0.51;0.16]	2.82 (0.21)	3.04 (0.18)	0.22 [-0.08;0.52]	0.55	0.12
sTM protein (ng/mL)	5.13 (0.60)	5.80 (0.69)	0.67 [-0.16;1.50]	5.37 (0.62)	5.25 (0.72)	-0.12 [-1.00;0.76]	6.57 (0.52)	6.79 (0.60)	0.22 [-0.53;0.98]	0.11	0.33
Urinary markers											
ACR, urine (mg/mmol)	3.1 (2.1)	2.6 (0.7)	-0.5 [-5.5;4.4]	2.7 (2.0)	1 (0.8)	-1.7 [-6.4;3.0]	5.0 (1.9)	2.4 (0.6)	-2.6 [-7.2;1.9]	0.68	0.44
HPSE-1 activity, urine (U/mL)	0.96 (0.19)	0.81 (0.14)	-0.15 [-0.53;0.24]	1.19 (0.21)	0.89 (0.16)	-0.30 [-0.71;0.12]	0.87 (0.17)	0.83 (0.13)	0.04 [-0.40;0.2]	0.52	0.62
MCP-1 activity, urine (ng/mmol)	22.3 (9.7)	39.3 (8.6)	17.1 [-10.2;44.3]	36.6 (9.3)	28.5 (9.4)	-8.10 [-35.7;19.5]	39.3 (8.7)	25.9 (7.8)	-13.4 [-38.3;11.5]	0.11	0.05

HPSE-1 heparanase-1, HYAL-1 hyaluronidase-1, HYAL-4 hyaluronidase-4, ANG-2 Angiotensin-2, sTM soluble thrombomodulin, ACR albumin creatinine ratio, MCP-1 monocyte chemoattractant protein 1, ns non-significant; Estimated marginal means with standard error.

^aLinear mixed models adjusted for age, sex, microvascular complications at baseline, macrovascular complications at baseline and hypertension at baseline with Bonferroni post-hoc, baseline compared to 3 months, ^binteraction term of the groups with measurement over time (Baseline-3 months), $p < 0.05$ is considered significant (**bold**).

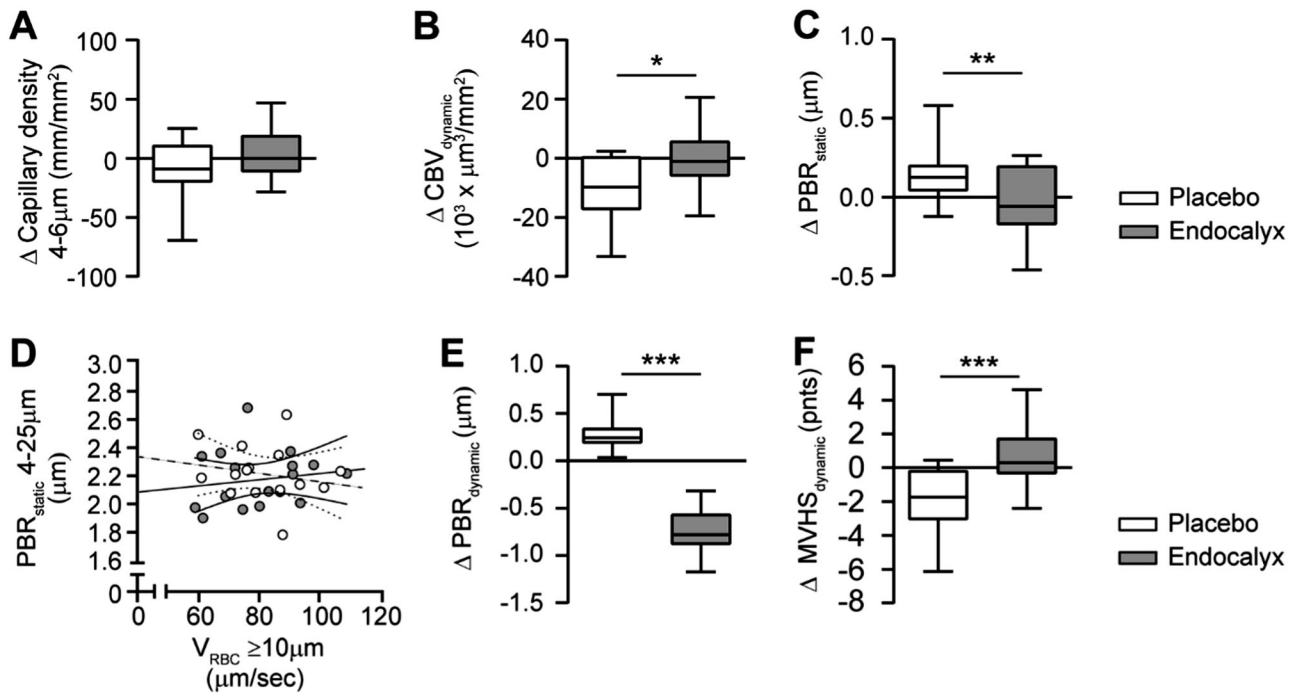


Fig. 3 Changes in microvascular parameters upon supplement treatment. Comparison of changes within 3 months intervention between the supplement and placebo of **A** Capillary density, **B** Dynamic capillary blood volume ($CBV_{dynamic}$) and **C** Static perfusion boundary region (PBR_{static}). **D** Scatter dot plots and simple linear regression (slope) with 95% confidence intervals of PBR_{static} plotted against red blood cell velocity (V_{RBC}) in feed vessels. Comparison of changes after 3 months intervention between supplement (continuous line) and placebo (dashed line) of **E** dynamic perfusion boundary region ($PBR_{dynamic}$) and **F** dynamic Microvascular Health Score ($MVHS_{dynamic}$). Box plot whiskers indicate 5th and 95th percentiles. Delta changes were compared between the supplement and placebo group with an unpaired t-test. * $P < 0.05$, ** $P < 0.01$, *** $P < 0.0001$.

showed the lowest urinary HPSE-1 activity. Urinary HPSE-1 activity in this study was only statistically significant in participants of Dutch origin in relation to ACR.

Previous diet intervention studies in patients with type 2 diabetes revealed reduced BMI, blood pressure, fasting glucose, total and low density cholesterol, CRP and IGF-1 levels in a cohort of 100 participants, particularly in those at risk for disease [38–40]. We recently showed in an experimental diabetic study, that a repeated FMD was able to partially preserve glomerular endothelial glycocalyx coverage, however, perturbing glomerular metabolic responses resulting in increased oxidative stress and reduced catabolic breakdown products [23]. While capillary loop morphology and endothelial glycocalyx heparan sulfate contents was preserved, hyaluronan surface expression was reduced which coincided with reduced UDP-glucuronic acid, a rate limiting building block in its biosynthesis. Despite the positive effects in the first FMD trial in patients with T2DM [22], showing beneficial effects on albuminuria levels in patients with micro-albuminuria next to beneficial effects on HbA1c levels and BMI, the lack of improvement in inflammatory or glycocalyx degrading markers in our study could be due to the already established cardiovascular problems, such as retinopathy, neuropathy and other cardiovascular disease markers. These cardiovascular comorbidities, however, do not seem to correspond with the observed albuminuria and these observations argue for alternative disease biomarkers in this specific patient population.

The main risk of severe calorie restriction in patients with diabetes is hypoglycemia and several studies on fasting regimes in T2DM patients emphasize the importance of adjusting the dosage of glucose lowering medications during fasting days [38, 41]. In our study, the dosages of the sulfonylurea derivatives and insulins were changed or stopped during the 5-day fasting cycle to minimize the chance of hypoglycemia. This resulted still in 2 reported occurrences of hypoglycemia during the FMD cycles

while patients did experience less of the time the feeling of hyper- or hypoglycemia after the diet cycles. It appears that, when medication dosage is adapted appropriately and patients are frequently monitored, a low caloric diet can be used safely in patients using sulfonylurea derivatives or insulin.

In one patient, the estimated glomerular filtration rate, which was not routinely measured in this study, turned out to be seriously deteriorated after the first diet cycle. This decline of kidney function appeared to be due to dehydration, as the kidney function fully recovered after intravenous fluid therapy. It has been known for a long time that severe calorie restriction is accompanied by loss of sodium and body water via a largely unexplained mechanism [42, 43]. Therefore, people who fast or use a FMD should always be encouraged to drink sufficiently. In our experimental study, we also found that weight loss during the FMD was mainly due to loss of water and lean mass [23]. Currently, a clinical trial with this diet in patients with diabetes is investigating the effect on body composition by collecting MRI data after a diet cycle [44]. For now, it might be advised that FMD should be used with caution in patients with decreased kidney function or CKD and in patients using diuretics, where kidney function should be monitored regularly.

This study has several limitations. Firstly, the low sample size and drop-out rate of the study. We experienced a low response rate in patients that were contacted for the clinical study. Conducting lifestyle intervention studies in the South-Asian population has been proven to be extremely difficult due to low response rates, high drop-out rates and lack of effect on lifestyle [45, 46]. We experienced a drop-out rate of 30% in the diet group, comparable to other FMD studies [40]. In addition, due to the COVID-19 epidemic, inclusions of the study had to be discontinued. The low sample size may have reduced the power to show significant effects in the intervention groups although still clear primary endpoints were observed. Secondly, in only a few patients

after the FMD cycle, capillary or urinary ketone levels were elevated reflecting ketosis. During fasting, when glycogen stores are depleted and glucose is less available, fatty acids are released from adipose tissue to serve as an alternative fuel, and excessive oxidation of fatty acids is accompanied by ketogenesis. These patients may not have been compliant with the dietary regime. Another explanation, however, could be that the switch from carbohydrate to lipid oxidation in response to fasting is impaired in South-Asians (as compared to European) with T2DM, reflecting metabolic inflexibility in South-Asian individuals [47]. As ketones are probably involved in the health effects of fasting [48], this may indicate that the benefits of fasting or fasting mimicking diets are less effective in individuals from South-Asian descent than in individuals of European descent.

A strength of the study is its execution in general practitioner offices with South-Asian Surinamese patients, a patient group that can be difficult to recruit for clinical trials as mentioned above. An intensive 1 and 2 year targeted lifestyle intervention in general practice revealed no significant weight loss or improvement in metabolic profiles in South-Asian Surinamese participants in The Hague [45, 46]. Although we also experienced low response rates and drop-outs, we did see beneficial effects on BMI and HbA1c levels, already at short term which suggest that South-Asian individuals may find it easier to adhere to repeated short term fasting cycles than continuous caloric restriction or continuous lifestyle interventions.

The development of diabetic vascular complications is a multifactorial pathway, therefore, therapies that target different factors in the pathogenesis are strongly recommended for treatment of diabetes [49]. Preserving endothelial function is seen as a valuable pharmacological target for protecting the microvasculature and reducing the incidence of complications in patients with diabetes [50, 51]. In the present study, we showed that supplementation with Endocalyx™ is a potential candidate able to improve microvascular health in SA-T2DM. We failed to demonstrate direct beneficial microvascular effects of FMD but saw temporarily improvement of metabolic risk factors in SA-T2DM. We confirm that FMD can probably be safely used in patients with diabetes glucose lowering drugs if the dose of these medications are adapted appropriately, but it needs to be used with caution in patients with CKD until further studies has been done.

DATA AVAILABILITY

The data underlying this article will be shared on reasonable request to the corresponding author.

REFERENCES

- Zheng Y, Ley SH, Hu FB. Global aetiology and epidemiology of type 2 diabetes mellitus and its complications. *Nat Rev Endocrinol*. 2018;14:88–98.
- Misra R, Patel T, Kotha P, Raji A, Ganda O, Banerji M, et al. Prevalence of diabetes, metabolic syndrome, and cardiovascular risk factors in US Asian Indians: results from a national study. *J Diabetes Complications*. 2010;24:145–53.
- Mather HM, Chaturvedi N, Fuller JH. Mortality and morbidity from diabetes in South Asians and Europeans: 11-year follow-up of the Southall Diabetes Survey, London, UK. *Diabet Med*. 1998;15:53–59.
- Karter AJ, Ferrara A, Liu JY, Moffet HH, Ackerson LM, Selby JV. Ethnic disparities in diabetic complications in an insured population. *JAMA*. 2002;287:2519–27.
- Tillin T, Hughes AD, Mayet J, Whincup P, Sattar N, Forouhi NG. The relationship between metabolic risk factors and incident cardiovascular disease in Europeans, South Asians, and African Caribbeans: SABRE (Southall and Brent Revisited) – a prospective population-based study. *J Am Coll Cardiol*. 2013;61:1777–86.
- Swerdlow AJ, Laing SP, Dos Santos Silva I, Slater SD, Burden AC, Botha JL. Mortality of South Asian patients with insulin-treated diabetes mellitus in the United Kingdom: a cohort study. *Diabet Med*. 2004;21:845–51.
- Qiao Q, Hu G, Tuomilehto J, Nakagami T, Balkau B, Borch-Johnsen K. Age- and sex-specific prevalence of diabetes and impaired glucose regulation in 11 Asian cohorts. *Diabetes Care*. 2003;26:1770–80.
- Chandie Shaw PK, Vandenbroucke JP, Tjandra YI, Rosendaal FR, Rosman JB, Geerlings W, et al. Increased end-stage diabetic nephropathy in Indo-Asian immigrants living in the Netherlands. *Diabetologia*. 2002;45:337–41.
- Barnett AH, Dixon AN, Bellary S, Hanif MW, O'Hare JP, Raymond NT, et al. Type 2 diabetes and cardiovascular risk in the UK south Asian community. *Diabetologia*. 2006;49:2234–46.
- Schachinger V, Britten MB, Zeiher AM. Prognostic impact of coronary vasodilator dysfunction on adverse long-term outcome of coronary heart disease. *Circulation*. 2000;101:1899–906.
- Suwaiddi JA, Hamasaki S, Higano ST, Nishimura RA, Holmes DR Jr., Lerman A. Long-term follow-up of patients with mild coronary artery disease and endothelial dysfunction. *Circulation*. 2000;101:948–54.
- Pomin VH. Sulfated glycans in inflammation. *Eur J Med Chem*. 2015;92:353–69.
- Zaporozhets T, Besednova N. Prospects for the therapeutic application of sulfated polysaccharides of brown algae in diseases of the cardiovascular system: review. *Pharm Biol*. 2016;54:3126–35.
- Schalkwijk CG, Stehouwer CD. Vascular complications in diabetes mellitus: the role of endothelial dysfunction. *Clin Sci*. 2005;109:143–59.
- Rabelink TJ, van den Berg BM, Garsen M, Wang G, Elkin M, van der Vlag J. Heparanase: roles in cell survival, extracellular matrix remodelling and the development of kidney disease. *Nat Rev Nephrol*. 2017;13:201–12.
- Brandhorst S, Choi IY, Wei M, Cheng CW, Sedrakyan S, Navarrete G, et al. A Periodic Diet that Mimics Fasting Promotes Multi-System Regeneration, Enhanced Cognitive Performance, and Healthspan. *Cell Metab*. 2015;22:86–99.
- Longo VD, Mattson MP. Fasting: molecular mechanisms and clinical applications. *Cell Metab*. 2014;19:181–92.
- Varady KA, Cienfuegos S, Ezpeleta M, Gabel K. Clinical application of intermittent fasting for weight loss: progress and future directions. *Nat Rev Endocrinol*. 2022;18:309–21.
- Choi IY, Piccio L, Childress P, Bollman B, Ghosh A, Brandhorst S, et al. A diet mimicking fasting promotes regeneration and reduces autoimmunity and multiple sclerosis symptoms. *Cell Rep*. 2016;15:2136–46.
- Vernieri C, Fuca G, Ligorio F, Huber V, Vingiani A, Iannelli F, et al. Fasting-mimicking diet is safe and reshapes metabolism and antitumor immunity in patients with cancer. *Cancer Discov*. 2022;12:90–107.
- de Groot S, Vreeswijk MP, Welters MJ, Gravesteyn G, Boei JJ, Jochems A, et al. The effects of short-term fasting on tolerance to (neo) adjuvant chemotherapy in HER2-negative breast cancer patients: a randomized pilot study. *BMC Cancer*. 2015;15:652.
- Sulaj A, Kopf S, von Rauchhaupt E, Kliemank E, Brune M, Kender Z, et al. Six-month periodic fasting in patients with Type 2 Diabetes and diabetic nephropathy: a proof-of-concept study. *J Clin Endocrinol Metab*. 2022.
- van der Velden AIM, Koudijs A, Kooijman S, Rietjens RGJ, Sol WMPJ, Avramut MC, et al. Fasting mimicking diet in diabetic mice partially preserves glomerular endothelial glycocalyx coverage, without changing the diabetic metabolic environment. *Am J Physiol Renal Physiol*. 2024.
- Regier M, Drost CC, Rauen M, Pavenstadt H, Rovas A, Kumpers P, et al. A dietary supplement containing fucoidan preserves endothelial Glycocalyx through ERK/MAPK signaling and protects against damage induced by CKD Serum. *Int J Mol Sci*. 2022;23:15520.
- Yuan L, Cheng S, Sol WMPJ, van der Velden AIM, Vink H, Rabelink TJ, et al. Heparan sulfate mimetic fucoidan restores the endothelial glycocalyx and protects against dysfunction induced by serum of COVID-19 patients in the intensive care unit. *ERJ Open Res*. 2022;8:00652–2021.
- van der Velden AIM, van den Berg BM, de Mutsert R, van der Vlag J, Jukema JW, Rosendaal FR, et al. Microvascular differences in individuals with obesity at risk of developing cardiovascular disease. *Obesity*. 2021;29:1439–44.
- Rovas A, Sackarnd J, Rossaint J, Kampmeier S, Pavenstadt H, Vink H, et al. Identification of novel sublingual parameters to analyze and diagnose microvascular dysfunction in sepsis: the NOSTRADAMUS study. *Crit Care*. 2021;25:112.
- Levey AS, Stevens LA, Schmid CH, Zhang YL, Castro AF 3rd, Feldman HI, et al. A new equation to estimate glomerular filtration rate. *Ann Intern Med*. 2009;150:604–12.
- Bradley C. Diabetes treatment satisfaction questionnaire. Change version for use alongside status version provides appropriate solution where ceiling effects occur. *Diabetes Care*. 1999;22:530–2.
- Friedewald WT, Levy RI, Fredrickson DS. Estimation of the concentration of low-density lipoprotein cholesterol in plasma, without use of the preparative ultracentrifuge. *Clin Chem*. 1972;18:499–502.
- Honda T, Kaneiwa T, Mizumoto S, Sugahara K, Yamada S. Hyaluronidases have strong hydrolytic activity toward Chondroitin 4-Sulfate comparable to that for Hyaluronan. *Biomolecules*. 2012;2:549–63.
- Kaneiwa T, Mizumoto S, Sugahara K, Yamada S. Identification of human hyaluronidase-4 as a novel chondroitin sulfate hydrolase that preferentially cleaves the galactosaminidic linkage in the trisulfated tetrasaccharide sequence. *Glycobiology*. 2010;20:300–9.

33. Buijssers B, Yanginlar C, de Nooijer A, Grondman I, Maciej-Hulme ML, Jonkman I, et al. Increased Plasma Heparanase activity in COVID-19 patients. *Front Immunol.* 2020;11:575047.
34. Lee DH, Dane MJ, van den Berg BM, Boels MG, van Teeffelen JW, de Mutsert R, et al. Deeper penetration of erythrocytes into the endothelial glycocalyx is associated with impaired microvascular perfusion. *PLoS One.* 2014;9:e96477.
35. Rovas A, Lukasz AH, Vink H, Urban M, Sackarnd J, Pavenstadt H, et al. Bedside analysis of the sublingual microvascular glycocalyx in the emergency room and intensive care unit - the GlycoNurse study. *Scand J Trauma Resusc Emerg Med.* 2018;26:16.
36. Dogne S, Rath G, Jouret F, Caron N, Dessy C, Flamion B. Hyaluronidase 1 deficiency preserves endothelial function and Glycocalyx integrity in early Streptozotocin-induced diabetes. *Diabetes.* 2016;65:2742–53.
37. van der Velden AIM, van den Berg BM, van den Born BJ, Galenkamp H, Ijpeelaar DHT, Rabelink TJ. Ethnic differences in urinary monocyte chemoattractant protein-1 and heparanase-1 levels in individuals with type 2 diabetes: the HELIUS study. *BMJ Open Diabetes Res Care.* 2022;10:e003003.
38. Carter S, Clifton PM, Keogh JB. The effects of intermittent compared to continuous energy restriction on glycaemic control in type 2 diabetes; a pragmatic pilot trial. *Diabetes Res Clin Pr.* 2016;122:106–12.
39. Ash S, Reeves MM, Yeo S, Morrison G, Carey D, Capra S. Effect of intensive dietetic interventions on weight and glycaemic control in overweight men with Type II diabetes: a randomised trial. *Int J Obes Relat Metab Disord.* 2003;27:797–802.
40. Wei M, Brandhorst S, Shelehchi M, Mirzaei H, Cheng CW, Budniak J, et al. Fasting-mimicking diet and markers/risk factors for aging, diabetes, cancer, and cardiovascular disease. *Sci Transl Med.* 2017;9:eaai8700.
41. Corley BT, Carroll RW, Hall RM, Weatherall M, Parry-Strong A, Krebs JD. Intermittent fasting in Type 2 diabetes mellitus and the risk of hypoglycaemia: a randomized controlled trial. *Diabet Med.* 2018;35:588–94.
42. Kreitzman SN, Coxon AY, Szaz KF. Glycogen storage: illusions of easy weight loss, excessive weight regain, and distortions in estimates of body composition. *Am J Clin Nutr.* 1992;56:292S–293S.
43. Heyman SN, Bursztyjn M, Szalat A, Muszkat M, Abassi Z. Fasting-induced Natriuresis and SGLT: A New Hypothesis for an Old Enigma. *Front Endocrinol.* 2020;11:217.
44. van den Burg EL, Schoonakker MP, van Peet PG, van den Akker-van Marle ME, Willems van Dijk K, Longo VD, et al. Fasting in diabetes treatment (FIT) trial: study protocol for a randomised, controlled, assessor-blinded intervention trial on the effects of intermittent use of a fasting-mimicking diet in patients with type 2 diabetes. *BMC Endocr Disord.* 2020;20:94.
45. Admiraal WM, Vlaar EM, Nierkens V, Holleman F, Middelkoop BJ, Stronks K, et al. Intensive lifestyle intervention in general practice to prevent type 2 diabetes among 18 to 60-year-old South Asians: 1-year effects on the weight status and metabolic profile of participants in a randomized controlled trial. *PLoS one.* 2013;8:e68605.
46. Vlaar EMA, Nierkens V, Nicolaou M, Middelkoop BJC, Busschers WB, Stronks K, et al. Effectiveness of a targeted lifestyle intervention in primary care on diet and physical activity among South Asians at risk for diabetes: 2-year results of a randomised controlled trial in the Netherlands. *BMJ Open.* 2017;7:e012221.
47. Bakker LE, Guigas B, van Schinkel LD, van der Zon GC, Streefland TC, van Klinken JB, et al. Middle-aged overweight South Asian men exhibit a different metabolic adaptation to short-term energy restriction compared with Europeans. *Diabetologia.* 2015;58:165–77.
48. Kolb H, Kempf K, Rohling M, Lenzen-Schulte M, Schloot NC, Martin S. Ketone bodies: from enemy to friend and guardian angel. *BMC Med.* 2021;19:313.
49. Verspohl EJ. Novel pharmacological approaches to the treatment of type 2 diabetes. *Pharm Rev.* 2012;64:188–237.
50. Hink U, Li H, Mollnau H, Oelze M, Matheis E, Hartmann M, et al. Mechanisms underlying endothelial dysfunction in diabetes mellitus. *Circ Res.* 2001;88:E14–22.
51. Potenza MA, Gagliardi S, Nacci C, Carratu MR, Montagnani M. Endothelial dysfunction in diabetes: from mechanisms to therapeutic targets. *Curr Med Chem.* 2009;16:94–112.

ACKNOWLEDGEMENTS

We are grateful to the participants of the clinical trial and the research students for assistance. We gratefully acknowledge Sandra van der Kooij (Division of Nephrology) department of Internal Medicine and Einthoven Laboratory for Vascular and Regenerative Medicine for technical assistance. Furthermore, we want to thank L-Nutra for providing the FMD boxes for the clinical and experimental trial.

AUTHOR CONTRIBUTIONS

JvdV and TR generated funding. AvdV, BMvdB, PKCS, HP and DIJ were involved in the design, and AvdV and HV processed and analyzed the data of the clinical study. All authors were involved in data interpretation, writing the paper, and had final approval of the submitted and published versions.

FUNDING

Consortium grant LSHM16058-SGF (GLYCOTREAT; a collaboration project financed by the PPP allowance made available by Top Sector Life Sciences & Health to the Dutch Kidney Foundation to stimulate public-private partnerships). The funders had no role in study design, data collection and analysis, decision to publish, or preparation of the manuscript. Fasting mimicking diet boxes (Prolon®) were provided by L-Nutra Inc., Los Angeles, CA, USA. Dietary supplement Endocalyx™ was provided by MicroVascular Health Solutions LLC, Alpine, UT, USA. The side-stream dark field (SDF) camera (CapiScope HVCS, KK Technology, Honiton, UK) coupled to the GlycoCheck™ software was provided by Microvascular Health Solutions Inc., Salt Lake City, UT, USA.

COMPETING INTERESTS

HV is Chief Science Officer at GlycoCheck BV (Maastricht, the Netherlands). Other authors have nothing to disclose.

ADDITIONAL INFORMATION

Supplementary information The online version contains supplementary material available at <https://doi.org/10.1038/s41387-024-00275-5>.

Correspondence and requests for materials should be addressed to Bernard M. van den Berg.

Reprints and permission information is available at <http://www.nature.com/reprints>

Publisher's note Springer Nature remains neutral with regard to jurisdictional claims in published maps and institutional affiliations.



Open Access This article is licensed under a Creative Commons Attribution 4.0 International License, which permits use, sharing, adaptation, distribution and reproduction in any medium or format, as long as you give appropriate credit to the original author(s) and the source, provide a link to the Creative Commons licence, and indicate if changes were made. The images or other third party material in this article are included in the article's Creative Commons licence, unless indicated otherwise in a credit line to the material. If material is not included in the article's Creative Commons licence and your intended use is not permitted by statutory regulation or exceeds the permitted use, you will need to obtain permission directly from the copyright holder. To view a copy of this licence, visit <http://creativecommons.org/licenses/by/4.0/>.

© The Author(s) 2024