



Universiteit
Leiden
The Netherlands

Utilizing (serial) coronary computed tomography angiography (CCTA) to predict plaque progression and major adverse cardiac events (MACE) results, merits and challenges

Driest, F.Y. van; Bijns, C.M.; Geest, R.J. van der; Broersen, A.; Dijkstra, J.; Scholte, A.J.H.A.; Jukema, J.W.

Citation

Driest, F. Y. van, Bijns, C. M., Geest, R. J. van der, Broersen, A., Dijkstra, J., Scholte, A. J. H. A., & Jukema, J. W. (2022). Utilizing (serial) coronary computed tomography angiography (CCTA) to predict plaque progression and major adverse cardiac events (MACE): results, merits and challenges. *European Radiology*, 32, 3408-3422.
doi:10.1007/s00330-021-08393-9

Version: Publisher's Version
License: [Creative Commons CC BY 4.0 license](https://creativecommons.org/licenses/by/4.0/)
Downloaded from: <https://hdl.handle.net/1887/3567524>

Note: To cite this publication please use the final published version (if applicable).



Utilizing (serial) coronary computed tomography angiography (CCTA) to predict plaque progression and major adverse cardiac events (MACE): results, merits and challenges

F. Y. van Driest¹ · C. M. Bijns¹ · R. J. van der Geest² · A. Broersen² · J. Dijkstra² · A. J. H. A. Scholte¹ · J. W. Jukema¹

Received: 4 June 2021 / Revised: 24 August 2021 / Accepted: 7 October 2021 / Published online: 8 January 2022
© The Author(s), under exclusive licence to European Society of Radiology 2021

Abstract

Objectives To present an overview of studies using serial coronary computed tomography angiography (CCTA) as a tool for finding both quantitative (changes) and qualitative plaque characteristics as well as epicardial adipose tissue (EAT) volume changes as predictors of plaque progression and/or major adverse cardiac events (MACE) and outline the challenges and advantages of using a serial non-invasive imaging approach for assessing cardiovascular prognosis.

Methods A literature search was performed in PubMed, Embase, Web of Science, Cochrane Library and Emcare. All observational cohort studies were assessed for quality using the Newcastle–Ottawa Scale (NOS). The NOS score was then converted into Agency for Healthcare Research and Quality (AHRQ) standards: good, fair and poor.

Results A total of 36 articles were analyzed for this review, 3 of which were meta-analyses and one was a technical paper. Quantitative baseline plaque features seem to be more predictive of MACE and/or plaque progression as compared to qualitative plaque features.

Conclusions A critical review of the literature focusing on studies utilizing serial CCTA revealed that mainly quantitative baseline plaque features and quantitative plaque changes are predictive of MACE and/or plaque progression contrary to qualitative plaque features. Significant questions regarding the clinical implications of these specific quantitative and qualitative plaque features as well as the challenges of using serial CCTA have yet to be resolved in studies using this imaging technique.

Key Points

- Use of (serial) CCTA can identify plaque characteristics and plaque changes as well as changes in EAT volume that are predictive of plaque progression and/or major adverse events (MACE) at follow-up.
- Studies utilizing serial CCTA revealed that mainly quantitative baseline plaque features and quantitative plaque changes are predictive of MACE and/or plaque progression contrary to qualitative plaque features.
- Ultimately, serial CCTA is a promising technique for the evaluation of cardiovascular prognosis, yet technical details remain to be refined.

Keywords Computed tomography angiography · Coronary artery disease · Plaque · Atherosclerotic · Adipose tissue

Abbreviations

%DS	Percentage diameter stenosis
ACS	Acute coronary syndrome
CAD	Coronary artery disease

CCTA	Coronary computed tomography angiography
CI	Confidence interval
CX	Circumflex artery
EAT	Epicardial adipose tissue
EFV	Epicardial fat volume
HR	Hazard ratio
HRP	High-risk plaque features
HU	Hounsfield units
ICA	Invasive coronary angiography
IQR	Interquartile range
IVOCT	Intravascular optical coherence tomography
IVUS	Intravascular ultrasound
LAD	Left anterior descending artery

✉ J. W. Jukema
j.w.jukema@lumc.nl

¹ Department of Cardiology, Leiden Heart-Lung Center, Leiden University Medical Center, Albinusdreef 2, 2333 ZA Leiden, The Netherlands

² Division of Image Processing, Department of Radiology, Leiden University Medical Center, Leiden, The Netherlands

LAP	Low-attenuation plaque
LAPV	Low-attenuation plaque volume
LM	Left main
MACE	Major adverse cardiac events
OR	Odds ratio
PAV	Percentage atheroma volume
PR	Positive remodelling
TPV	Total plaque volume

Introduction

Coronary artery disease (CAD) is still one of the leading causes of death and loss of disability-adjusted life years worldwide [1]. The clinical course of CAD mainly consists of progression of atherosclerosis punctuated by merely unpredictable clinical events despite treatment [2]. Plaque phenotypes are clinically relevant as vulnerable plaque is prone to rupture and may lead to major adverse cardiac events (MACE) [3]. Also, it has been demonstrated that epicardial adipose tissue (EAT) shares the same embryologic origin as intra-abdominal fat, which is associated with CAD [4]. This underlies the importance of accurate identification and risk stratification of patients at risk for future atherosclerosis progression and MACE. Besides invasive techniques such as intravascular ultrasound (IVUS), intravascular optical coherence tomography (IVOCT) and invasive coronary angiography (ICA), coronary computed tomography angiography (CCTA) is a non-invasive imaging approach that allows for both qualitative and quantitative assessments of coronary plaque [5]. A previous meta-analysis has shown high correlations between CCTA features and measures of coronary plaque as compared to IVUS [6]. As such, CCTA has rapidly emerged as a non-invasive tool for plaque assessment [7]. More recent studies have demonstrated the ability of serial CCTA to assess changes in plaque burden and plaque morphology as well as changes in EAT volume [8–11]. Use of serial CCTA may be beneficial for both symptomatic and asymptomatic patients as recent expert recommendations state that CCTA may be performed as the first-line test for evaluating patients with no known CAD who present with stable typical or atypical chest pain, or other symptoms which are thought to represent a possible anginal equivalent. Subsequently, CCTA may be performed in asymptomatic high-risk individuals, especially in those who have a higher likelihood of having a large amount of noncalcified plaque [12].

This review presents an overview of studies using serial CCTA as a tool for finding both quantitative (changes) and qualitative plaque characteristics as well as EAT volume changes as predictors of plaque progression and/or MACE and outlines the challenges and advantages of using a serial non-invasive imaging approach for assessing cardiovascular prognosis. Details

regarding the search strategies, quality assessment and selection criteria can be found in the supplementary material.

Image analysis of serial CCTA

Recent development in plaque quantification software allows for semiautomated methods to quantify plaque volume on a single CCTA, drastically increasing the speed of assessment [13]. Plaque volumes can be automatically sub-classified by composition using predefined intensity cutoff values in Hounsfield units (HU). These predefined intensity cutoff values in HU currently available have been obtained by comparing CCTA with IVUS or by histological examination. However, cutoff values vary [14]. Nowadays, an algorithm which uses adaptive attenuation thresholds based on the principle that plaque attenuation values are influenced by luminal contrast densities may be used. These contrast densities in turn are affected by a variety of factors including cardiac output and patient body size. Furthermore, luminal contrast densities decrease along the length of vessels and are lower in vessel segments with a severe stenosis. Adaptive HU cutoff values may overcome these problems by depending on regional attenuation contrast in the lumen [14, 15]. In a recent study by de Knecht et al., fixed HU cutoff values were compared to adaptive HU cutoff values. Fixed HU thresholds underestimated fibrous and fibrofatty plaque volumes and overestimated necrotic core and dense plaque volumes compared to adaptive HU thresholds. Also, volumes of dense calcium plaque differed with increasing tertiles of luminal contrast density when using fixed HU thresholds instead of using adaptive HU thresholds. This highlights the importance of using an adaptive HU threshold algorithm when evaluating plaque composition [16]. An imaging example demonstrating the superiority of adaptive HU thresholds over fixed HU values is depicted in Fig. 1. When assessing serial CCTA, analysis of the same coronary segments in baseline and follow-up scans is crucial for serial plaque comparison. Several studies utilizing serial CCTA facilitate co-registration of coronary segments and lesions by using anatomical landmarks like branching vessels and distance from the ostium which is done manually by visual analysis [17–19]. Figure 2 depicts an example of serial CCTA.

Quantitative and qualitative plaque features

Assessment of CCTA images can be performed on a quantitative or qualitative basis. Quantitative analysis focusses on volumetric plaque measurements such as total plaque volume (TPV), calcified or noncalcified plaque volume, low-attenuation plaque volume (LAPV) and percentage atheroma volume (PAV). The latter is calculated as a percentage by

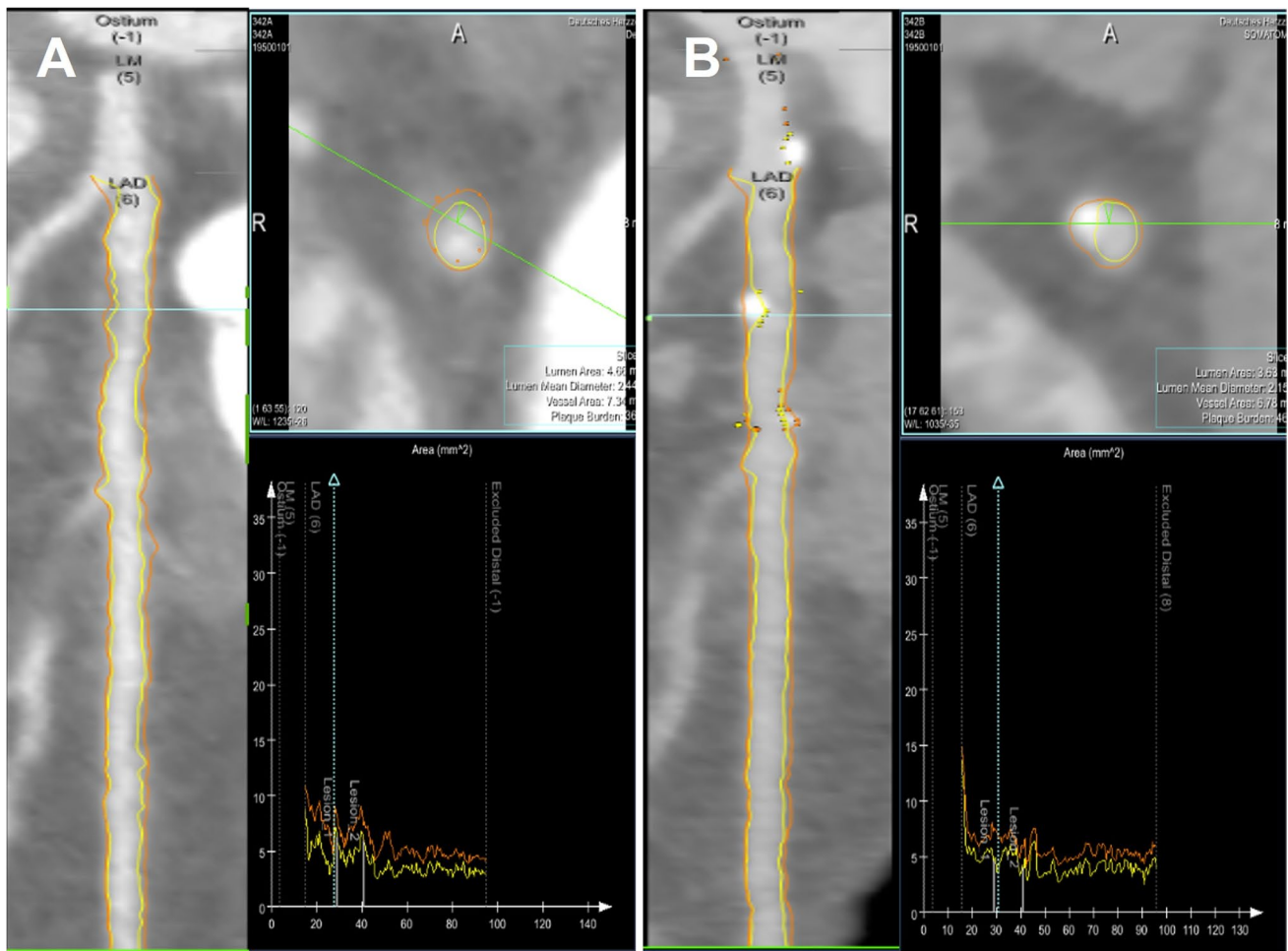


Fig. 2 Example of a patient with an inter-scan period of 6 years between the baseline (shown on the left side, panel **A**) and follow-up scan (shown on the right side, panel **B**). The investigated vessel is the left main (LM) and left anterior descending (LAD) artery demonstrating a total of three newly formed calcified plaques: one in the LM

and two in the proximal segment of the LAD. In this case, branching of the circumflex artery (CX) can be used as an anatomical landmark for co-registration by visual analysis. The orange line marks the outer vessel wall, and the yellow line the lumen of the coronary artery [8]

Specifically, the PAV at baseline was the most important predictor (information gain value: 0.193, regression coefficient (β): 0.529; $p < 0.01$) [29]. Lee et al. assessed the progression from non-obstructive lesions to obstructive lesions compared to the presence of high-risk plaque features. Both total PAV and percentage diameter stenosis (%DS) at baseline were significant risk factors for the development of obstructive lesions (HR, 1.04 [95% CI, 1.02–1.07] and HR, 1.07 [95% CI, 1.04–1.10], respectively; all $p < 0.05$). Interestingly, the presence of high-risk plaque features was not a significant risk factor ($p = 0.433$). In lesions without HRP features, baseline total PAV (HR, 1.035; 95% CI, 1.002–1.067; $p = 0.031$) and baseline %DS (HR, 1.081; 95% CI, 1.049–1.115; $p < 0.001$) were independent predictors for development of obstructive lesions. However, in lesions with HRP features, only baseline total PAV independently predicted progression to obstructive lesions (HR,

1.102; 95% CI, 1.035–1.174; $p = 0.003$) [10]. Weber et al. also demonstrated the importance of quantitative plaque features as a significant correlation between baseline TPV and TPV progression (spearman's rho = 0.33; $p < 0.01$). The progression in TPV was mainly determined by a progression of calcified plaque volume (7.6 mm³ [interquartile ranges 0.2 and 33.6] vs. 16.6 mm³ [interquartile ranges 1.8 and 62.1]; $p < 0.01$). Also, patients with obstructive CAD at follow-up had a significantly higher TPV at baseline (384.9 mm³ [interquartile ranges 182.8 and 538.1] vs. 45.1 mm³ [interquartile ranges 10.3 and 102.9]; $p < 0.01$) [8]. Yu et al. reported predictors for plaque progression assessed at serial CCTA in patients with solely non-culprit intermediate stenoses. LAP at baseline was an independent predictor of lesion volume progression at follow-up (OR, 16.74; 95% CI, 5.02–55.84; $p < 0.001$) [9]. Lee et al. demonstrated that adding HRP features to a per-lesion predictive model for

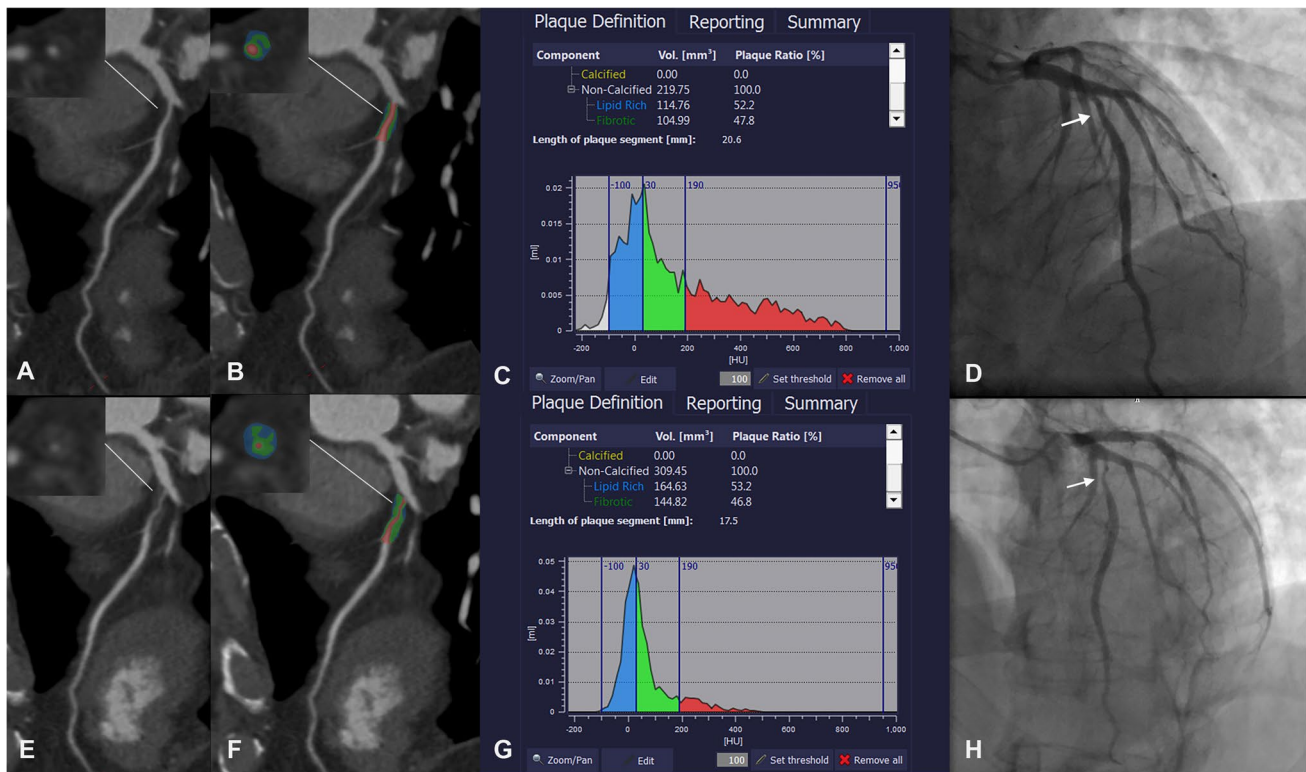


Fig. 3 Example of a patient with LAP progression, a HRP feature. Panel A demonstrates a noncalcified plaque at baseline CCTA in the proximal LAD with moderate stenosis which is also visualized by baseline ICA in panel D. The colour-coded image in panel B demonstrates the presence of LAP components labelled in blue. Further

visualization of plaque components can be done using a histogram depicted in panel C. LAP component volume was 114.76 mm³. At 12-month follow-up, significant lesion progression with severe stenosis is observed (panels F–H). Note the increase of the LAP component volume to 164.63 mm³ [9]

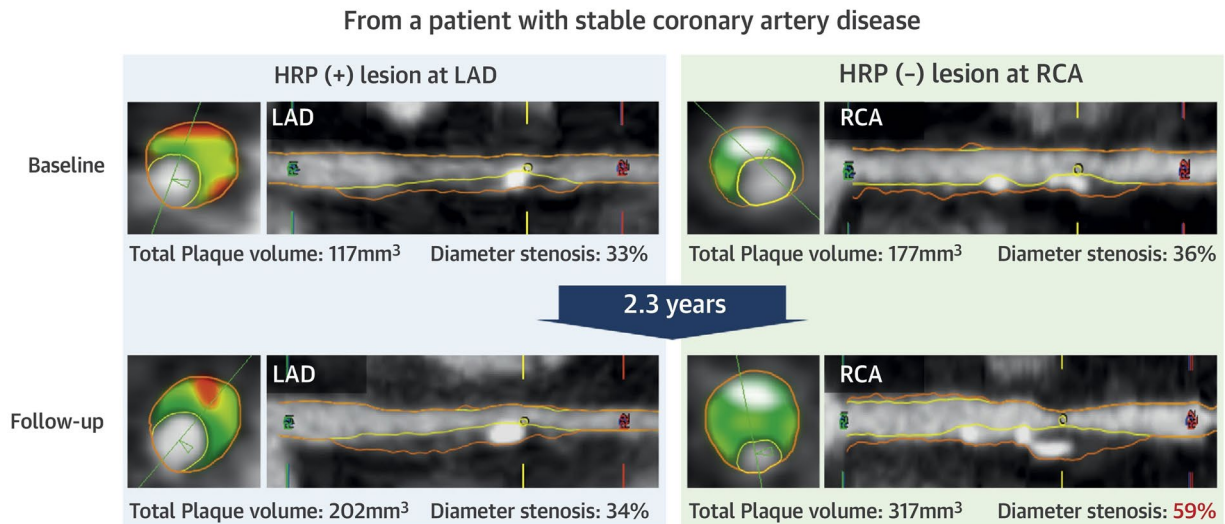
developing obstructive lesions containing plaque volume and clinical risk factors increased the C-statistic from 0.830 [95% CI, 0.828–0.833] to 0.895 [95% CI, 0.893–0.897]; $p=0.003$. Also, the per-lesion HRP feature model was significantly better than the per-patient HRP feature model (C-statistic: 0.825 [95% CI, 0.823–0.827] vs. 0.895 [95% CI, 0.893–0.897], $p<0.001$) [32].

Epicardial adipose tissue

Numerous studies investigated the relationship between EAT and coronary artery plaque progression [4, 11, 33]. EAT is a metabolically active organ that shares the same embryologic origin as intra-abdominal fat, which is associated with CAD. Under pathological circumstances, EAT has been shown to be a rich source of inflammatory adipokines. Given that inflammation is a fundamental component of the atherosclerotic process, it is postulated that EAT may influence the development and progression of coronary artery disease by contributing to the local inflammatory burden within and around atherosclerotic plaque [4]. Psaltis et al. assessed the relationship between epicardial fat volume (EFV) and coronary artery plaque progression; higher baseline EFV was

associated with the progression or development of coronary artery plaque (β coefficient 0.014 [95% CI, 0.003–0.026]; $p=0.014$). Interestingly, change in EFV over time was not ($p=0.860$) [4]. You et al. also found that baseline indexed epicardial fat volume was an independent predictor of rapid increase in lipid-rich plaque volume (OR, 1.029 [95% CI, 1.005–1.053]; $p=0.016$). Nevertheless, annual changes in indexed epicardial fat volume were not associated with parallel changes in lipid-rich, fibrous or calcified coronary plaque volume ($p=0.286$, $p=0.500$, $p=0.096$; respectively) [33]. However, both studies contained patients that were overweight at baseline (BMI (kg/m²) \pm SD: 29.3 \pm 5.8 for Psaltis et al. and 25.1 \pm 3.3 for You et al.). On the contrary, Nakaniishi et al. solely focused on non-obese patients and demonstrated that an increase of EAT volume (> 10 mL) during follow-up was associated with an increased prevalence of obstructive plaques ($p<0.001$) and plaques with high-risk features, such as PR ($p<0.001$) and LAP ($p=0.001$), in non-obese patients with CAD [11]. Figure 5 depicts an example of EAT analysis.

CENTRAL ILLUSTRATION: Progression of Nonobstructive Lesions With and Without HRP Features From the Same Patient



Lee, S.-E. et al. *J Am Coll Cardiol Img.* 2020;13(6):1409-17.

Fig. 4 Example of a patient with plaque progression in a plaque with and without HRP features. A plaque in the right coronary artery (RCA) without HRP features progressed to an obstructive lesion at

follow-up. On the contrary, a plaque with HRP features in the LAD from the same patient remained non-obstructive at follow-up [10]

CCTA-derived plaque features for predicting MACE

High-risk features of plaque such as PR, LAP and spotty calcification are found to be linked to plaque rupture and MACE [34]. Multiple studies have investigated the relationship between CCTA-derived features of plaque and MACE on serial CCTA [9, 11, 34]. Yu et al. [9] found that patients with MACE showed a statistically significant higher prevalence of LAP at baseline compared to patients in the MACE-absent subgroup (40.0% vs. 12.8%; $p=0.015$). Prevalence of spotty calcification, napkin-ring sign and PR was not statistically different between the MACE and MACE-absent subgroups (13.33% vs. 6.40%, $p=0.291$; 46.67% vs. 28.00%, $p=0.147$; 73.33% vs. 60.00%, $p=0.406$, respectively). Interestingly, also no significant difference existed between the two groups with regard to quantitative plaque features such as TPV, lesion length and diameter stenosis (44.6 mm³ vs. 46.3 mm³, $p=0.479$; 10.5 mm vs. 13.0 mm, $p=0.166$; 55.0% vs. 62.0%, $p=0.077$, respectively, for the MACE and MACE-absent subgroups). Yet, the lesion volume progression subgroup showed a higher incidence of MACE compared to the non-lesion progression subgroup (56.25% vs. 4.84%; log-rank $p<0.001$). Notably, the MACE subgroup was small (15/140) [9]. Motoyama et al. described that patients with plaque progression had a significantly higher

incidence of MACE (14.3% vs. 0.3%, log-rank $p<0.0001$). Also, when classified in groups according to the presence of HRP features, the patients with both HRP at baseline CCTA and plaque progression at follow-up showed the highest frequency of MACE (27%, log-rank $p<0.0001$). Conversely, in patients with HRP lesions at baseline which did not progress during follow-up, MACE did not occur. Interestingly, non-HRP lesions also led to MACE and the ones that progressed over time on a volumetric basis and evolved from non-HRP to HRP were more likely to result in MACE (3 out of a total of 9 events (15.4%)) [34]. Rosendaal et al. demonstrated that at 10 years, patients with an increase of $>1.0\%$ PAV/year had a higher risk of MACE compared to patients with an increase of $<1.0\%$ PAV/year (27.2% vs. 9.5%; log-rank $p<0.001$). Patients were further stratified by the median baseline PAV. Patients with an increase $<1.0\%$ PAV/year and low baseline PAV experienced the lowest rates of MACE at 10 years, whilst those above the median baseline PAV and $>1.0\%$ increase in PAV/year experienced the most events (6.5% vs. 30.2%, $p<0.001$) [35]. Gu et al. identified patients with non-obstructive CAD who underwent a second CCTA. Those who developed any plaques coexisting in the left anterior descending, the left circumflex and the right coronary artery (three-vessel plaque progression) between the two scans had an increased chance of MACE

Table 1 Studies utilizing serial CCTA to assess the relationship between CCTA-derived quantitative and qualitative plaque features as predictors for plaque progression and/or MACE

Study	Year	Number of patients analyzed	Design	CT technique	Image analysis	Inter-scan interval	Population	Endpoint(s)	Most important predictor(s)
Han et al. [29]	2020	1083	Prospective	≥ 64 slice	Semiautomated	Median: 3.3 years (IQR: 2.6–4.8)	Patients with 2 CCTA scans with ≥ 2-year interval	Rapid plaque progression	PAV at baseline (information gain value: 0.193, regression coefficient (β): 0.529; $p < 0.01$)
Weber et al. [8]	2020	350	Retrospective	16-slice CT, 64-slice single source and 64-slice dual source	Semiautomated and automated	Median: 42 months (IQR: 23–69)	Patients with suspected obstructive CAD based on clinical presentation	TPV progression	TPV at baseline (Spearman's rho = 0.33; $p < 0.01$) Calcified plaque volume (baseline: 7.6 mm ³ [IQR: 0.2 and 33.6] vs. follow-up: 16.6 mm ³ [IQR: 1.8 and 62.1]; $p < 0.01$)
Yu et al. [9]	2018	140	Prospective	128-slice single-source multidetector CT	Manual, semi-automated and automated	Mean: 14.6 ± 2.2 months	Patients with stable angina or atypical chest pain with one unrevascularized intermediate coronary stenosis considered a non-culprit lesion	Obstructive CAD Lesion volume progression MACE	TPV at baseline (384.9 mm ³ [IQR: 182.8 and 538.1] vs. 45.1 mm ³ [IQR: 10.3 and 102.9]; $p < 0.01$) LAP at baseline (multivariate analysis: OR 16.74 (5.02–55.84); $p < 0.001$) Higher prevalence of baseline LAP (40.00% vs. 12.80%; $p = 0.015$) Lesion volume progression (Kaplan–Meier curve: 56.25% vs. 4.84%; log-rank $p < 0.001$)

Table 1 (continued)

Study	Year	Number of patients analyzed	Design	CT technique	Image analysis	Inter-scan interval	Population	Endpoint(s)	Most important predictor(s)
Lee et al. [10]	2020	1297	Prospective	≥ 64 slice	Semiautomated	Mean: 3.8 ± 1.6 years	Patients with 2 CCTA scans with ≥ 2-year interval	Plaque progression	PAV and %DS at baseline (HR (95% CI): 1.04 (1.02–1.07), and HR (95% CI): 1.07 (1.04–1.10), respectively; all $p < 0.05$) Lesions without HRP at baseline; total PAV (HR (95% CI): 1.035 (1.002–1.067); $p = 0.031$) and baseline %DS (HR (95% CI): 1.081 (1.049–1.115); $p < 0.001$) Lesions with HRP features; baseline total PAV (HR (95% CI) 1.102 (1.035–1.174); $p = 0.003$)
Psaltis et al. [4]	2016	64	Retrospective	320-row multidetector CT	Manual and semi-automated	Median: 25.2 months	Patients with chest pain, dyspnea in stable setting and no ACS	Plaque progression or development	Higher baseline EFV (β coefficient, 0.014; 95% CI, 0.003–0.026; $p = 0.014$)
You et al. [33]	2016	87	Retrospective	64-slice CT and 128-slice dual-source CT	Manual and semi-automated	Mean: 25.5 ± 15.7 months	Patients with at least one baseline CCTA artery plaque	Increase of lipid-rich plaque volume	Baseline indexed EFV (multivariate analysis: OR: 1.029 [95% CI: 1.005–1.053]; $p = 0.016$)
Nakanishi et al. [11]	2014	517	Prospective	64-slice CT	Manual and automated	Mean: 12 ± 5 months	Non-obese patients undergoing serial multidetector CCTA for the evaluation of CAD	Increased prevalence of obstructive plaques and plaques with PR and LAP	Increase in EAT volume ($p < 0.001$, $p < 0.001$, respectively)

Table 1 (continued)

Study	Year	Number of patients analyzed	Design	CT technique	Image analysis	Inter-scan interval	Population	Endpoint(s)	Most important predictor(s)
Motoyama et al. [34]	2015	423	Retrospective	320-slice CT, 64-slice CT and 16-slice CT	Manual	Median: 1 year	Patients undergoing consecutive CCTA for suspected or known CAD	MACE	Plaque progression (Kaplan–Meier curve: 14.3% vs. 0.3%, log-rank $p < 0.0001$) Both HRP features at baseline and plaque progression at follow-up (Kaplan–Meier curve: 27%, log-rank $p < 0.0001$) Non-HRP lesions developing in HRP lesions with a significant stenosis at follow-up (3 out of a total of 9 ACS events (15.4%)) > 1.0% Δ PAV increase per year: 27.2% vs. < 1.0% Δ PAV increase per year: 9.5% at 10 years (Kaplan–Meier curve, log-rank $p < 0.001$) < 1.0% Δ PAV increase per year + low baseline PAV: 6.5% vs. > 1.0% Δ PAV increase per year + high baseline PAV: 30.2% (Kaplan–Meier curve, log-rank $p < 0.001$)
Rosendalet al [35]	2020	1166	Prospective	≥ 64 slice	Semiautomated	At least 2 years	Patients with 2 CCTA scans with ≥ 2 -year interval	MACE	

Table 1 (continued)

Study	Year	Number of patients analyzed	Design	CT technique	Image analysis	Inter-scan interval	Population	Endpoint(s)	Most important predictor(s)
Lee et al. [32]	2020	1297	Prospective	≥ 64 slice	Semiautomated	Mean: 3.8 ± 1.6 years	Patients with 2 CCTA scans with ≥ 2-year interval	Obstructive CAD	Per-lesion analysis: Adding HRP features to a predictive model containing plaque volume and clinical risk factors increased the C-statistic to 0.895 [95% CI: 0.893–0.897]; <i>p</i> = 0.003
Gu et al. (36)	2020	757	Retrospective	64-slice dual-source CT	Manual	Mean: 2.0 years	Patients with non-obstructive CAD, who underwent a 2 nd CCTA requested by the treating physician or had new/worsening symptoms	MACE	Three-vessel plaque progression (HR: 2.37, <i>p</i> = 0.026) Severe proximal plaque progression (HR: 3.65, <i>p</i> = 0.003)

TPV total plaque volume, *LAP* low-attenuation plaque, *PAV* percent atheroma volume, *%DS* percentage diameter stenosis, *EFV* epicardial fat volume, *MACE* major adverse cardiac events, *CAD* coronary artery disease, *HRP* high-risk plaque, *CT* computed tomography, *CCTA* coronary computed tomography angiography, *PR* positive remodelling, *EAT* epicardial adipose tissue, *IQR* interquartile range, *ACS* acute coronary syndrome, *OR* odds ratio, *HR* hazard ratio, *HR* hazard ratio, *CI* confidence interval

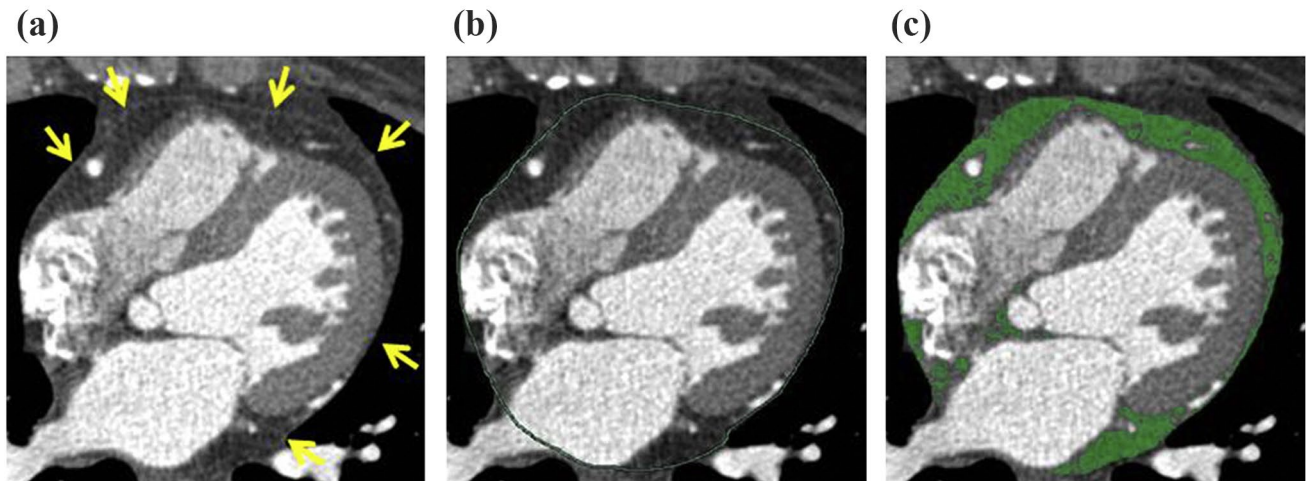


Fig. 5 An example representing the measurement of EAT volume. The yellow arrows in panel **a** represent the pericardium in a cross-sectional slice. Segmentation of the EAT is achieved by tracing the pericardium in the axial view represented by the green line (panel **b**).

Subsequently, the adipose tissue can be identified by using threshold attenuation values of 30 to 250 HU which is represented by the green area in panel **c** [11]

(HR, 2.37; $p=0.026$). Furthermore, patients having a non-obstructive proximal lesion in the left anterior descending, the left circumflex, or the right coronary artery, which developed in a $\geq 70\%$ stenosis (severe proximal plaque progression) between the two scans, also had an increased chance of MACE (HR, 3.65; $p=0.003$) [36].

Therapeutic measures to decrease plaque progression

Several studies utilized serial CCTA to assess the effect of different medical therapies—mostly statins—on plaque progression [17, 19, 37, 38]. Zeb et al. demonstrated that statin use causes a significant decrease of both LAP and non-calcified plaque volumes (-12.2 ± 19.2 vs. $5.9 \text{ mm}^3 \pm 23.1$, $p < 0.0001$, and -47.7 ± 71.9 vs. $13.8 \text{ mm}^3 \pm 76.6$, $p < 0.001$, respectively, for statin and non-statin users) and a non-statistically significant increase in the amount of calcified plaque volume in statin users compared to non-statin users [37]. Smit et al. also demonstrated that statin use was associated with a significant reduction of noncalcified plaque progression (1.0 ± 16.0 vs. $6.4 \pm 13.9 \text{ mm}^3$; $p=0.049$) compared to non-statin users. Statin users in turn showed an increase in calcified plaque progression (9.0 ± 12.2 vs. $3.3 \pm 8.6 \text{ mm}^3$; $p=0.001$) [19]. A study by Lee et al. utilizing the large PARADIGM registry also demonstrated that over time statin therapy increased plaque calcification and reduced HRP features as lesions in statin-taking patients experienced higher annualized progression of calcified PAV ($1.27 \pm 1.54 \text{ mm}^3$ per year vs. $0.98 \pm 1.27 \text{ mm}^3$ per year, respectively; $p < 0.001$) but slower progression of noncalcified PAV than

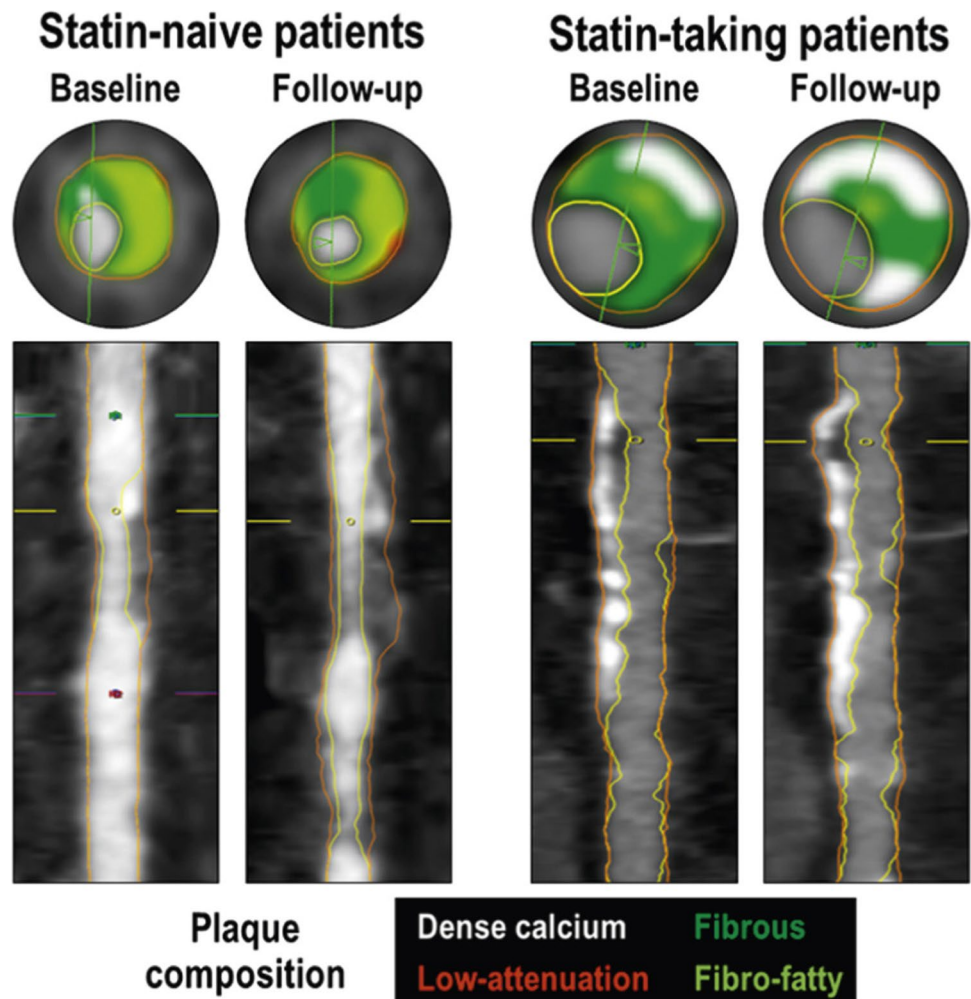
lesions in statin-naïve patients ($0.49 \pm 2.39 \text{ mm}^3$ per year vs. $1.06 \pm 2.42 \text{ mm}^3$ per year, respectively; $p < 0.001$) [17]. At baseline CCTA, statin-taking patients exhibited a higher prevalence of HRP, PR and spotty calcification (13.7% vs. 10.0%, 56.0% vs. 47.6% and 10.2% vs. 6.8%, respectively; all $p < 0.05$), with no differences in LAP (8.5% vs. 8.4%, respectively; $p=0.95$). The annualized incidence of HRP, PR, spotty calcification and LAP were lower (0.9% per year vs. 1.6% per year, 5.2% per year vs. 7.2% per year, 0.2% per year vs. 0.5% per year and 0.8% per year vs. 1.0% per year, respectively, $p < 0.001$ for all) for statin- versus non-statin-taking patients, respectively [17]. It must be noted that differences in baseline characteristics between the statin- and non-statin-taking groups may have impacted results.

Li et al. demonstrated that not solely statin use but also statin dosage plays a key role in aiding plaque regression as patients receiving intensive statin therapy demonstrated significantly higher annualized regression of LAP volume, TPV and % plaque volume compared to patients receiving moderate statin therapy. Interestingly, a higher baseline LAP volume was also associated with higher TPV regression ($p < 0.001$). Thus, patients with greater baseline LAP volume were more likely to benefit from statin therapy [38]. Figure 6 depicts an imaging example of assessment of therapy efficacy on plaque presence using serial CCTA.

Benefits and challenges of serial CCTA

A critical challenge in serial CCTA is the wide range of commercially available CT scanners and the rapid technological developments. Several studies used different scanner types

Fig. 6 CCTA images of lesions at baseline and follow-up among statin-naïve patients and statin-taking patients. Statin-taking patients expressed slower progression of noncalcified PAV compared to statin-naïve patients. Noncalcified PAV is the summation of fibrous, fibrofatty and low-attenuation PAV [17]



with different specifications and performance at baseline and at follow-up [8, 10, 29, 33, 34]. Symons et al. performed a systemic comparison of scanner variability in serial CCTA, in which plaque volume was measured with the same or a different CCTA scanner within 30 days. Plaque volume variability was $\pm 18.4\%$ (coefficient of variation) when the same scanner was used at baseline and follow-up, whilst the plaque volume variability was $\pm 29.9\%$ when different scanners were used [39]. This highlights the importance of standardized CCTA protocols in future prospective studies.

No professional society guidelines dictate the methods for the routine usage of serial CCTA for evaluating progression of CAD. Therefore, it remains unclear which choice of endpoint measurement is the most appropriate [40]. The usage of different endpoints could impede study comparison. Furthermore, the ideal inter-scan interval remains unclear. However, one may conclude that a relatively short inter-scan interval may inhibit the detection of newly formed plaques. On the contrary, a relatively long inter-scan interval may contribute to different CCTA protocols being used. As is observed from numerous studies cited in this review, one

may propose that an inter-scan interval of at least 1–2 years would seem reasonable.

Development and implementation of radiation dose reduction tools for coronary CCTA have rapidly been expanded as high radiation exposure is known to increase the risk of cancer. As noted in the SCCT guidelines on radiation dose and dose-optimization strategies in cardiovascular CT, several scanner settings such as tube current and tube potential should be kept to a minimum to limit radiation exposure whilst also maintaining adequate image quality [41].

Currently, all studies utilizing serial CCTA for plaque progression are using visual analysis of anatomical landmarks and vessel branches for alignment between baseline and follow-up CCTA. Hence, automatic co-registration would be feasible to match corresponding points on the coronary tree in the baseline and follow-up scan. This has recently been demonstrated by Cao et al. but remains to be tested in a clinical setting [42].

Despite its challenges, serial CCTA has emerged as an important non-invasive imaging technique to track the effectiveness of medication on coronary plaque progression. In a

Table 2 Benefits and challenges of serial CCTA

Benefits	Challenges
Assessment of changes in plaque burden and plaque morphology	Establishing low-radiation protocols to prevent unnecessary exposure during successive CCTAs
Predicting (rapid) plaque progression and/or MACE	Currently no consensus on endpoint measurements
Semiautomated measurements allow objective sequential measurements	Usage of different CT scanners at baseline and follow-up
Measuring the effect of different medical therapies on plaque progression	The ideal inter-scan interval remains unclear
Giving an insight in mechanistic correlations of coronary atherogenesis	Automatic co-registration to match corresponding points on the coronary tree in the baseline and follow-up scan instead of using visual analysis of anatomical landmarks
	Implementation of machine learning for plaque analysis

review by Taron et al., the authors showed that serial CCTA could successfully demonstrate the efficacy of anti-atherosclerotic treatments [40], and Dahal et al. have demonstrated the importance of serial CCTA in tracking coronary atheroma progression in studies using new pharmacotherapies [43]. Furthermore, when combining therapies and cardiovascular outcomes, serial CCTA can give an insight in the mechanistic correlations of coronary atherogenesis [44]. Current benefits and challenges of serial CCTA are reported in Table 2.

Conclusions

Serial CCTA has rapidly emerged as the non-invasive modality to track atherosclerotic plaque changes and to assess the impact of different treatment strategies on CAD. Multiple studies utilizing serial CCTA have demonstrated that baseline quantitative plaque features as well as quantitative plaque changes—contrary to qualitative plaque features—are the most important in predicting plaque progression and MACE over time. However, it must be noted that although statistically quantitative plaque features remain the most important predictors of cardiovascular prognosis, qualitative features also have a substantial contribution. Furthermore, use of serial CCTA has been proven to be useful in the assessment of (statin) therapy efficacy on plaque progression and has revealed that statins slowed the overall progression of coronary atherosclerosis volume with increased plaque calcification and reduction of HRP features.

For optimal interpretation of serial CCTA, the following suggestions can be taken into consideration. First, the use of standardized acquisition protocols for both baseline and follow-up CT scans seems preferable, as well as adaptive HU threshold algorithms for the evaluation of plaque composition. Second, to date, no expert consensus has been available on the ideal inter-scan interval between baseline and follow-up CT scan. However, based on current studies, this interval could potentially be set at 1–2 years. Third, it seems favourable to quantify plaque as automated as possible. It should, however, be stressed that for now serial CCTA solely

remains an important research tool for identifying surrogate endpoints predictive of MACE and is unlikely to feature as part of the clinical workup of patients. Ultimately, serial CCTA is a promising technique for the evaluation of cardiovascular prognosis yet technical details remain to be refined.

Supplementary Information The online version contains supplementary material available at <https://doi.org/10.1007/s00330-021-08393-9>.

Acknowledgements The Department of Cardiology of Leiden University Medical Centre received research grants from Biotronik, Medtronic, Boston Scientific, GE Healthcare and Edwards Lifesciences. Arthur Scholte received a speaker's fee from Canon Medical Systems. This research did not receive any specific grants from funding agencies in the public, commercial or not-for-profit sectors.

Funding The authors state that this work has not received any funding.

Declarations

Guarantor The scientific guarantor of this publication is Wouter Jukema.

Conflict of Interest The authors of this manuscript declare relationships with the following companies: Arthur Scholte received a speaker's fee from Canon Medical Systems. The remaining authors have nothing to disclose.

Statistics and Biometry No complex statistical methods were necessary for this paper.

Informed Consent Written informed consent was not required for this study because it concerns a review article.

Ethical Approval Institutional review board approval was not required because it concerns a review article.

Methodology • review article

References

1. Roth GA, Johnson C, Abajobir A et al (2017) Global, regional, and national burden of cardiovascular diseases for 10 causes, 1990 to 2015. *J Am Coll Cardiol* 70(1):1–25

2. Camargo GC, Rothstein T, Derenne ME et al (2017) Factors associated with coronary artery disease progression assessed by serial coronary computed tomography angiography. *Arq Bras Cardiol* 108(5):396–404
3. Virmani R, Burke AP, Farb A, Kolodgie FD (2006) Pathology of the vulnerable plaque. *J Am Coll Cardiol* 47(8 Suppl):C13–C18
4. Psaltis PJ, Talman AH, Munnur K et al (2016) Relationship between epicardial fat and quantitative coronary artery plaque progression: insights from computer tomography coronary angiography. *Int J Cardiovasc Imaging* 32(2):317–328
5. Hoffmann U, Moselewski F, Nieman K et al (2006) Noninvasive assessment of plaque morphology and composition in culprit and stable lesions in acute coronary syndrome and stable lesions in stable angina by multidetector computed tomography. *J Am Coll Cardiol* 47(8):1655–1662
6. Fischer C, Hulten E, Belur P, Smith R, Voros S, Villines TC (2013) Coronary CT angiography versus intravascular ultrasound for estimation of coronary stenosis and atherosclerotic plaque burden: a meta-analysis. *J Cardiovasc Comput Tomogr* 7(4):256–266
7. Knuuti J, Ballo H, Juarez-Orozco LE et al (2018) The performance of non-invasive tests to rule-in and rule-out significant coronary artery stenosis in patients with stable angina: a meta-analysis focused on post-test disease probability. *Eur Heart J* 39(35):3322–3330
8. Weber C, Deseive S, Brim G et al (2020) Coronary plaque volume and predictors for fast plaque progression assessed by serial coronary CT angiography—a single-center observational study. *Eur J Radiol* 123:108805
9. Yu M, Li W, Lu Z, Wei M, Yan J, Zhang J (2018) Quantitative baseline CT plaque characterization of unrevascularized non-culprit intermediate coronary stenosis predicts lesion volume progression and long-term prognosis: a serial CT follow-up study. *Int J Cardiol* 264:181–186
10. Lee SE, Sung JM, Andreini D et al (2019) Differences in progression to obstructive lesions per high-risk plaque features and plaque volumes with CCTA. *JACC Cardiovasc Imaging* 13(6):1409–1417
11. Nakanishi K, Fukuda S, Tanaka A et al (2014) Persistent epicardial adipose tissue accumulation is associated with coronary plaque vulnerability and future acute coronary syndrome in non-obese subjects with coronary artery disease. *Atherosclerosis* 237(1):353–360
12. Narula J, Chandrashekar Y, Ahmadi A et al (2021) SCCT 2021 expert consensus document on coronary computed tomographic angiography: a report of the Society of Cardiovascular Computed Tomography. *J Cardiovasc Comput Tomogr* 15(3):192–217
13. Papadopoulou SL, Garcia-Garcia HM, Rossi A et al (2013) Reproducibility of computed tomography angiography data analysis using semiautomated plaque quantification software: implications for the design of longitudinal studies. *Int J Cardiovasc Imaging* 29(5):1095–1104
14. de Graaf MA, Broersen A, Kitslaar PH et al (2013) Automatic quantification and characterization of coronary atherosclerosis with computed tomography coronary angiography: cross-correlation with intravascular ultrasound virtual histology. *Int J Cardiovasc Imaging* 29(5):1177–1190
15. Dalager MG, Bottcher M, Andersen G et al (2011) Impact of luminal density on plaque classification by CT coronary angiography. *Int J Cardiovasc Imaging* 27(4):593–600
16. de Knecht MC, Haugen M, Jensen AK et al (2019) Coronary plaque composition assessed by cardiac computed tomography using adaptive Hounsfield unit thresholds. *Clin Imaging* 57:7–14
17. Lee SE, Chang HJ, Sung JM et al (2018) Effects of statins on coronary atherosclerotic plaques: The PARADIGM Study. *JACC Cardiovasc Imaging* 11(10):1475–1484
18. Lee SE, Sung JM, Andreini D et al (2019) Differential association between the progression of coronary artery calcium score and coronary plaque volume progression according to statins: the Progression of Atherosclerotic Plaque Determined by Computed Tomographic Angiography Imaging (PARADIGM) study. *Eur Heart J Cardiovasc Imaging* 20(11):1307–1314
19. Smit JM, van Rosendaal AR, El Mahdiui M et al (2020) Impact of clinical characteristics and statins on coronary plaque progression by serial computed tomography angiography. *Circ Cardiovasc Imaging* 13(3):9
20. van Rosendaal AR, Lin FY, Ma X et al (2020) Percent atheroma volume: optimal variable to report whole-heart atherosclerotic plaque burden with coronary CTA, the PARADIGM study. *J Cardiovasc Comput Tomogr* 14(5):400–406
21. Deseive S, Straub R, Kupke M et al (2018) Automated quantification of coronary plaque volume from CT angiography improves CV risk prediction at long-term follow-up. *JACC Cardiovascular Imaging* 11(2):280–2.
22. Hadamitzky M, Taubert S, Deseive S et al (2013) Prognostic value of coronary computed tomography angiography during 5 years of follow-up in patients with suspected coronary artery disease. *Eur Heart J* 34(42):3277–3285
23. Maurovich-Horvat P, Schlett CL, Alkadhi H et al (2012) The napkin-ring sign indicates advanced atherosclerotic lesions in coronary CT angiography. *JACC Cardiovascular Imaging* 5(12):1243–52.
24. Motoyama S, Kondo T, Sarai M et al (2007) Multislice computed tomographic characteristics of coronary lesions in acute coronary syndromes. *J Am Coll Cardiol* 50(4):319–326
25. Otsuka K, Fukuda S, Tanaka A et al (2013) Napkin-ring sign on coronary CT angiography for the prediction of acute coronary syndrome. *JACC Cardiovascular Imaging* 6(4):448–57.
26. Hoffmann U, Moselewski F, Nieman K et al (2006) Noninvasive assessment of plaque morphology and composition in culprit and stable lesions in acute coronary syndrome and stable lesions in stable angina by multidetector computed tomography. *J Am Coll Cardiol* 47(8):1655–1662
27. Puchner SB, Liu T, Mayrhofer T et al (2014) High-risk plaque detected on coronary CT angiography predicts acute coronary syndromes independent of significant stenosis in acute chest pain. *J Am Coll Cardiol* 64(7):684–692
28. Motoyama S, Sarai M, Harigaya H et al (2009) Computed tomographic angiography characteristics of atherosclerotic plaques subsequently resulting in acute coronary syndrome. *J Am Coll Cardiol* 54(1):49–57
29. Han D, Kolli KK, Al'Aref SJ et al (2020) Machine learning framework to identify individuals at risk of rapid progression of coronary atherosclerosis: from the PARADIGM Registry. *J Am Heart Assoc*. 9(5):e013958
30. Nerlekar N, Ha FJ, Cheshire C et al (2018) Computed tomographic coronary angiography-derived plaque characteristics predict major adverse cardiovascular events. *Circ Cardiovasc Imaging* 11(1):e006973
31. Nicholls SJ, Hsu A, Wolski K et al (2010) Intravascular ultrasound-derived measures of coronary atherosclerotic plaque burden and clinical outcome. *J Am Coll Cardiol* 55(21):2399–2407
32. Lee SE, Sung JM, Andreini D et al (2020) Per-lesion versus per-patient analysis of coronary artery disease in predicting the development of obstructive lesions: the Progression of Atherosclerotic Plaque Determined by Computed Tomographic Angiography Imaging (PARADIGM) study. *Int J Cardiovasc Imaging* 36(12):2357–2364
33. You S, Sun JS, Park SY, Baek Y, Kang DK (2016) Relationship between indexed epicardial fat volume and coronary plaque volume assessed by cardiac multidetector CT. *Medicine (Baltimore)* 95(27):8
34. Motoyama S, Ito H, Sarai M et al (2015) Plaque characterization by coronary computed tomography angiography and the

- likelihood of acute coronary events in mid-term follow-up. *J Am Coll Cardiol* 66(4):337–346
35. van Rosendaal AR, Lin FY, van den Hoogen IJ et al (2021) Progression of whole-heart atherosclerosis by coronary CT and major adverse cardiovascular events. *J Cardiovasc Comput Tomogr* 15(4):322–330
 36. Gu H, Lu B, Gao Y et al (2020) Prognostic value of atherosclerosis progression for prediction of cardiovascular events in patients with nonobstructive coronary artery disease. *Acad Radiol* 28(7):980–987
 37. Zeb I, Li D, Nasir K et al (2013) Effect of statin treatment on coronary plaque progression - a serial coronary CT angiography study. *Atherosclerosis* 231(2):198–204
 38. Li Z, Hou Z, Yin W et al (2016) Effects of statin therapy on progression of mild noncalcified coronary plaque assessed by serial coronary computed tomography angiography: a multicenter prospective study. *Am Heart J* 180:29–38
 39. Symons R, Morris JZ, Wu CO et al (2016) Coronary CT angiography: variability of CT scanners and readers in measurement of plaque volume. *Radiology* 281(3):737–748
 40. Taron J, Lee S, Aluru J, Hoffmann U, Lu MT (2020) A review of serial coronary computed tomography angiography (CTA) to assess plaque progression and therapeutic effect of anti-atherosclerotic drugs. *Int J Cardiovasc Imaging* 36(12):2305–2317
 41. Halliburton SS, Abbara S, Chen MY et al (2011) SCCT guidelines on radiation dose and dose-optimization strategies in cardiovascular CT. *J Cardiovasc Comput Tomogr* 5(4):198–224
 42. Cao Q, Broersen A, Kitslaar PH, Yuan M, Lelieveldt BPF, Dijkstra J (2020) Automatic coronary artery plaque thickness comparison between baseline and follow-up CCTA images. *Med Phys* 47(3):1083–1093
 43. Dahal S, Budoff MJ (2019) Implications of serial coronary computed tomography angiography in the evaluation of coronary plaque progression. *Curr Opin Lipidol* 30(6):446–451
 44. Lakshmanan S, Rezvanizadeh V, Budoff MJ (2020) Comprehensive plaque assessment with serial coronary CT angiography: translation to bedside. *Int J Cardiovasc Imaging* 36(12):2335–2346
- Publisher's note** Springer Nature remains neutral with regard to jurisdictional claims in published maps and institutional affiliations.