



Universiteit
Leiden
The Netherlands

Multimodality imaging in aortic stenosis: new diagnostic and therapeutic frontiers

Ferrer-Sistach, E.; Teis, A.; Bayés-Genís, A.; Delgado, V.

Citation

Ferrer-Sistach, E., Teis, A., Bayés-Genís, A., & Delgado, V. (2022). Multimodality imaging in aortic stenosis: new diagnostic and therapeutic frontiers. *Revista Espanola De Cardiologia*, 76(1), 40-46. doi:10.1016/j.recesp.2022.05.023

Version: Publisher's Version

License: [Licensed under Article 25fa Copyright Act/Law \(Amendment Taverne\)](#)

Downloaded from: <https://hdl.handle.net/1887/4082578>

Note: To cite this publication please use the final published version (if applicable).

Review article

Multimodality imaging in aortic stenosis: new diagnostic and therapeutic frontiers

Elena Ferrer-Sistach,^a Albert Teis,^{a,b} Antoni Bayés-Genís,^a and Victoria Delgado^{a,b,*}^a Institut del Cor, Hospital Universitari Germans Trias i Pujol, Badalona, Spain^b Department of Cardiology, Leiden University Medical Center, Leiden, The Netherlands

Article history:

Received 5 May 2022

Accepted 3 June 2022

Available online 15 June 2022

Keywords:

Aortic stenosis

Medical therapy

Multimodality imaging

Echocardiography

Computed tomography

Cardiac magnetic resonance

Nuclear imaging

ABSTRACT

The advent of transcatheter aortic valve implantation has revolutionized the treatment of calcific aortic valve stenosis. Elderly patients who were previously considered inoperable have currently an efficacious and safe therapy that provides better survival. In addition, current practice guidelines tend to recommend earlier intervention to avoid the irreversible consequences of long-lasting pressure overload caused by the stenotic aortic valve. Appropriate timing of the intervention relies significantly on imaging techniques that provide information on the severity of the aortic stenosis as well as on the hemodynamic consequences and cardiac remodeling. While left ventricular ejection fraction remains one of the main functional parameters for risk stratification in patients with severe aortic stenosis, advances in imaging techniques have provided new structural and functional parameters that allow the identification of patients who will benefit from intervention before the occurrence of symptoms or irreversible cardiac damage. Furthermore, ongoing research aiming to identify the medical therapies that can effectively halt the progression of aortic stenosis relies heavily on imaging endpoints, and new imaging techniques that characterize the metabolic activity of calcific aortic stenosis have been proposed to monitor the effects of these therapies. The present review provides an up-to-date overview of the imaging advances that characterize the pathophysiology and that have changed the management paradigm of aortic stenosis.

© 2022 Sociedad Española de Cardiología. Published by Elsevier España, S.L.U. All rights reserved.

Imagen multimodal en la estenosis aórtica: nuevas fronteras diagnósticas y terapéuticas

RESUMEN

El desarrollo del implante percutáneo de válvula aórtica ha revolucionado el tratamiento de la estenosis de válvula aórtica calcificada. Los pacientes ancianos a los que se consideraba inoperables ahora cuentan con un tratamiento eficaz y seguro que proporciona una mejor supervivencia. Además, las guías de práctica actuales tienden a recomendar una intervención más temprana para evitar las consecuencias irreversibles de la sobrecarga de presión de larga duración causada por la válvula aórtica estenótica. El momento adecuado para la intervención depende en gran medida de las técnicas de imagen que informan de la gravedad de la estenosis aórtica, pero también de las consecuencias hemodinámicas y el remodelado cardíaco. Si bien la fracción de eyección del ventrículo izquierdo sigue siendo uno de los principales parámetros funcionales para la estratificación del riesgo de los pacientes con estenosis aórtica grave, los avances en las técnicas de imagen han proporcionado nuevos parámetros estructurales y funcionales que permiten identificar a los pacientes que se beneficiarán de la intervención antes de que aparezcan síntomas o daño cardíaco irreversible. Además, el desarrollo de tratamientos médicos que pueden detener de manera efectiva la progresión de la estenosis aórtica depende en gran medida de la información que las técnicas de imagen aportan, y la caracterización de la actividad metabólica de la estenosis aórtica calcificada con técnicas de medicina nuclear o tomografía computarizada ha permitido monitorizar los efectos de esos tratamientos. El presente artículo de revisión brinda una visión actualizada de los avances en técnicas de imagen que caracterizan la fisiopatología y han cambiado el paradigma del tratamiento de la estenosis aórtica.

© 2022 Sociedad Española de Cardiología. Publicado por Elsevier España, S.L.U. Todos los derechos reservados.

Palabras clave:

Estenosis aórtica

Tratamiento médico

Imagen multimodal

Ecocardiografía

Tomografía computarizada

Resonancia magnética cardiovascular

Medicina nuclear

* Corresponding author.

E-mail address: videlga@gmail.com (V. Delgado).

@VDelgadoGarcia

Abbreviations

AS: aortic valve stenosis
 AVR: aortic valve replacement
 AVA: aortic valve area
 LV-GLS: left ventricular global longitudinal strain
 ATTR-CA: transthyretin cardiac amyloidosis

INTRODUCTION

Over 7 million people in Europe and North America have aortic valve stenosis (AS). Significant AS is the main indication of surgical and/or transcatheter interventions for valvular heart disease in Europe, with the prevalence being expected to rise significantly in the upcoming years as the population becomes older.^{1,2} Management and indication of aortic valve replacement (AVR) are determined by the presence of signs and symptoms associated with severe AS and the hemodynamic consequences diagnosed with imaging techniques.

Currently, clinical practice guidelines recommend AVR in patients with symptomatic severe AS, and in asymptomatic patients with left ventricular (LV) systolic dysfunction.^{3–5} The guidelines also consider AVR in patients with asymptomatic severe AS who have markers of poor prognosis such as peak aortic jet velocity > 5 m/s, mean aortic pressure gradient > 60 mmHg, and LV ejection fraction < 55%.⁶ Furthermore, a pathologic response to exercise testing, severe LV hypertrophy and increased levels of natriuretic peptides are also considered in decision-making regarding asymptomatic patients with severe AS. Other imaging aspects that are not currently considered in the guidelines but have been associated with the prognosis of patients with severe AS include the presence of impaired myocardial mechanics, as assessed with strain imaging, and myocardial fibrosis, as assessed by cardiovascular magnetic resonance (CMR) techniques. Therefore, cardiac imaging is key in the diagnosis and management of patients with severe AS.^{7–10}

Transthoracic echocardiography is the imaging technique of choice to evaluate the severity and the hemodynamic

consequences of AS.¹¹ However, in daily clinical practice, echocardiography often demonstrates contradictory results, challenging the diagnosis of AS severity. Low-dose dobutamine stress echocardiography, as well as cardiac computed tomography (CCT), provide useful information to identify patients with true severe AS.^{12–15} Furthermore, as the population ages, there will be an increase in the prevalence of cardiac comorbidities that challenge the diagnosis and management when severe AS coexists (ie, cardiac amyloidosis) and in which other imaging techniques such as nuclear imaging or CMR play an important role. Finally, although the pathophysiology of AS has been extensively studied, the ability to image the pathophysiological mechanisms of progression of AS with new molecular imaging techniques has revived research into medical therapies that may potentially halt the natural history of AS.^{16,17}

This review appraises the latest updates in cardiac imaging for the understanding of the pathophysiology of AS and the diagnosis and risk stratification of patients with severe AS. In addition, the role of cardiac imaging in the development of alternative therapies to AVR will be reviewed (figure 1).

NEW IMAGING INSIGHTS IN DIAGNOSIS OF AORTIC VALVE STENOSIS

Transthoracic echocardiography is the imaging technique of choice to diagnose the presence and severity of AS. According to current guidelines,⁴ severe AS is based on peak jet velocity > 4 m/s, mean transvalvular gradient > 40 mmHg, and calculated aortic valve area (AVA) < 1 cm². However, these measurements have some challenges. AVA calculation by continuity equation is heavily influenced by variations in the measurement of the LV outflow tract. Two-dimensional echocardiography assumes that the LV outflow tract is circumferential instead of oval-shaped, introducing the smallest of the LV outflow tract measurements in the continuity equation, resulting in significant underestimation of the AVA compared with 3-dimensional techniques.¹⁸ In addition, peak jet velocity and mean transvalvular gradient are Doppler-based parameters influenced by LV function, the patient's hemodynamic status, and the correct alignment of the ultrasound beam with the ejection jet through the aortic valve. Consequently,

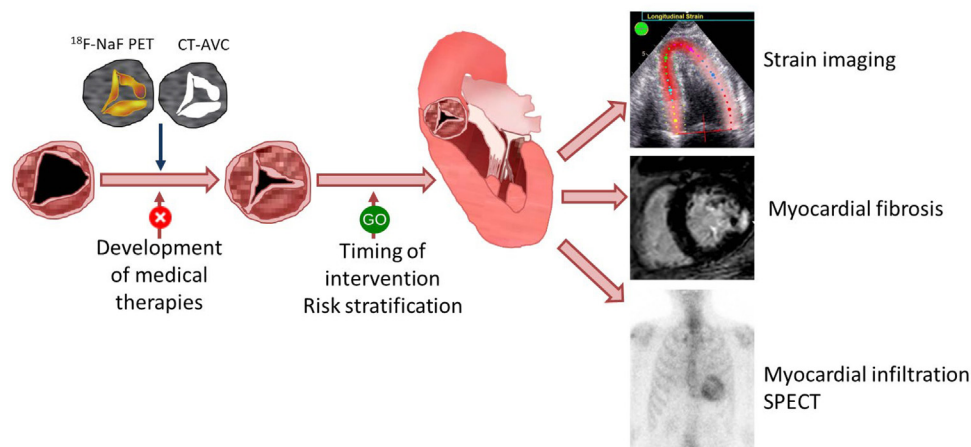


Figure 1. Central illustration. Multimodality imaging in aortic stenosis. In the evaluation of the effect of therapies targeting the pathophysiology underlying the progression of calcific aortic stenosis, imaging techniques such as ¹⁸F-NaF positron emission tomography or computed tomography can detect structural changes of the valve earlier than the hemodynamic consequences of the stenosis. Once severe aortic stenosis is diagnosed, markers other than symptoms and left ventricular ejection fraction can help to risk stratify patients who may benefit from early intervention. These markers include myocardial strain imaging, myocardial fibrosis on cardiovascular magnetic resonance and, in some patients, the presence of transthyretin cardiac amyloidosis can be ruled out with the use of technetium ^{99m} pyrophosphate scintigraphy. AVC, aortic valve calcium; CT, computed tomography; F, fluorine; NaF, sodium fluoride; PET, positron emission tomography; SPECT, single photon emission computed tomography.

it is well known that 40% of patients with severe AS defined as an AVA $< 1 \text{ cm}^2$ may show low gradient ($< 40 \text{ mmHg}$) due to reduced stroke volume (low flow $< 35 \text{ mL/m}^2$) because of reduced LV ejection fraction (classic low flow low gradient severe AS) or because of severe LV hypertrophy and small ventricular cavity (paradoxical low flow low gradient severe AS). In classic low-flow low-gradient severe AS, inducing flow and contractile reserve with low-dose dobutamine stress echocardiography and demonstrating that mean transvalvular gradient increases $> 40 \text{ mmHg}$ while AVA remains $< 1 \text{ cm}^2$ helps to establish the diagnosis of true severe AS.^{12,19} Accordingly, current guidelines include low-dose dobutamine stress echocardiography with a class I recommendation in this clinical scenario. However, the role of low-dose dobutamine stress echocardiography in patients with paradoxical low-flow low-gradient severe AS is less well established. Patients with paradoxical low-flow low-gradient severe AS are mostly women, with a history of hypertension and a small left ventricle with associated significant hypertrophy.²⁰ Clavel et al.²¹ have proposed the calculation of the projected AVA which takes into consideration the mean transvalvular flow rate, a parameter that varies widely from patient to patient during stress echocardiography. The projected AVA at a normal flow rate showed stronger correlation with the explanted aortic valve weight than peak stress AVA or mean gradient.²² However, it should be noted that, in patients with paradoxical low-flow low-gradient severe AS, low-dose dobutamine stress echocardiography may not be hemodynamically well tolerated and current guidelines do not include this imaging technique for these patients.

When low-dose dobutamine stress echocardiography is inconclusive and contractile reserve cannot be induced or flow rate normalized, other surrogates of severe AS should be considered. Computed tomography (CT) allows quantification of the calcification burden of the aortic valve. The thickened, hyperechogenic aortic cusps that suggest calcific AS on echocardiography are best visualized with noncontrast CCT. Large, observational studies have shown an association between aortic valve calcium burden and mean transvalvular gradient and AVA.²³ Importantly, the cutoff

values of aortic valve calcium burden to define severe AS differ between men and women: > 2000 and > 1200 , respectively (figure 2).^{14,15} In the diagnostic algorithm of patients with low-flow low-gradient severe AS, noncontrast CCT is considered to establish the diagnosis and decision making.⁴

More recently, the measurement of aortic valve calcium burden with contrast-enhanced CCT has been validated against noncontrast CCT and explanted aortic valve weights in a group of patients with various grades of AS.²⁴ This imaging technique has superior spatial resolution to noncontrast CCT and allows estimation of the fibrotic component of the aortic valve. Measurement of the fibrocalcific volume of the aortic valve with contrast-enhanced CCT demonstrated a better correlation with peak aortic jet velocity, particularly in women. In addition, the ratio between the fibrotic and the calcific component of the aortic valve decreased with increasing severity of AS. These results are promising since contrast-enhanced CCT is frequently used in patients undergoing transcatheter aortic valve implantation and, in those with low-flow low-gradient severe AS, the use of noncontrast CCT may be obviated.

NEW IMAGING INSIGHTS IN RISK STRATIFICATION OF PATIENTS WITH AORTIC VALVE STENOSIS

The progressive reduction in in-hospital mortality after surgical AVR over the years to levels below 3% has been related not only to technical advances but also to the referral of patients probably with less advanced disease and who may even be asymptomatic.²⁵ Appropriate timing of aortic valve intervention is pivotal to improve patient outcomes and reduce the short- and long-term risk of the intervention. Current guidelines recommend aortic valve intervention when AS is severe and causes symptoms or reduction in LV ejection fraction (LVEF).⁴ However, before severe AS causes symptoms or LVEF falls to $< 50\%$, it has been hypothesized that earlier intervention would improve outcomes by avoiding the development of the adverse hemodynamic and

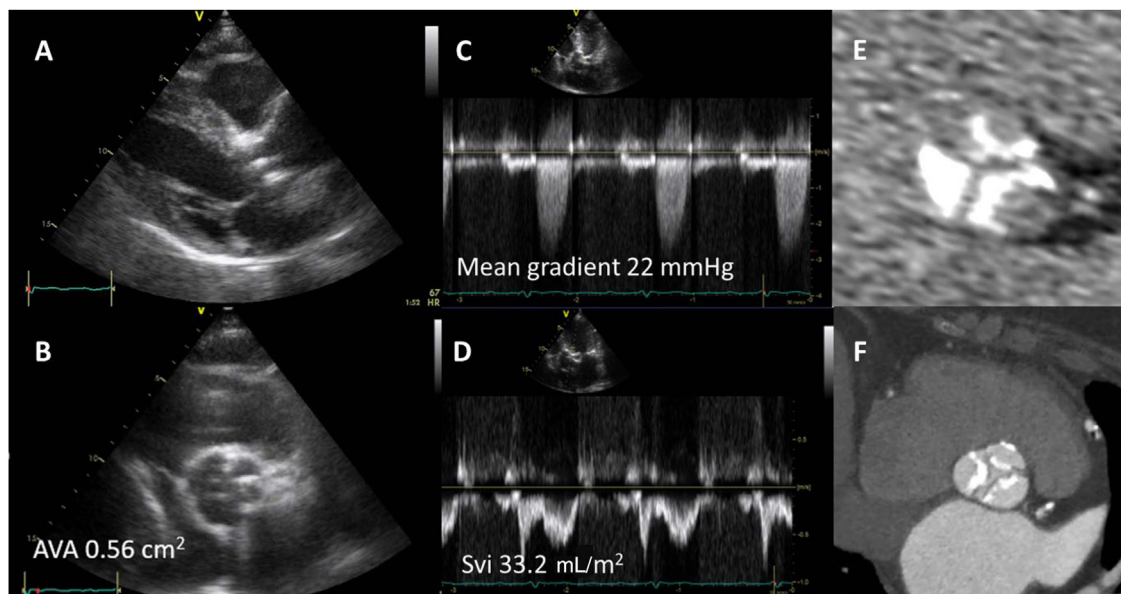


Figure 2. Diagnosis of severe aortic stenosis with computed tomography in a patient with discordant grading on echocardiography. On the parasternal long-axis view (A) and the short-axis view (B) of the aortic valve, thickened, hyperechogenic leaflets can be observed, suggesting severe aortic stenosis. However, on continuous wave Doppler signal through the aortic valve, the mean transvalvular pressure gradient is $< 40 \text{ mmHg}$ and on pulsed wave Doppler signal, the calculated stroke volume is $< 35 \text{ mL/m}^2$. The calculated aortic valve area is $< 1 \text{ cm}^2$. Noncontrast-enhanced computed tomography shows an aortic valve calcium score of 2500 arbitrary units (E) and on contrast-enhanced computed tomography, the valve shows 3 severely calcified leaflets while the thickening cannot be visualized (F). AVA, aortic valve area; Sv, stroke volume index.

structural consequences of severe AS. The results of the RECOVERY and the AVATAR trials demonstrated that asymptomatic patients with severe AS undergoing AVR had better outcomes than those randomized to watchful waiting management and emphasize the need for new markers that can reliably identify patients who will benefit from intervention.^{26,27}

The pressure overload caused by severe AS induces an increase in LV wall stress. To maintain LV systolic function, the LV responds with myocardial hypertrophy characterized by increased muscle fiber diameter and a parallel addition of myofibrils.²⁸ In addition, there is an increase in perivascular fibrosis, interstitial fibrosis and myocyte apoptosis as a consequence of the impaired coronary flow reserve and myocardial ischemia.²⁹ These structural changes appear before there is a reduction in LVEF. However, other imaging parameters have demonstrated to be more sensitive than LVEF in the detection of such changes. Strain imaging techniques and the measurement of myocardial deformation have been demonstrated to be more sensitive than LVEF in the detection of LV systolic dysfunction. Patients with severe AS and LVEF > 50% usually have impaired values of LV global longitudinal strain (LV-GLS) (figure 3). LV-GLS is a more reproducible measurement than LVEF and it has been associated with outcomes in asymptomatic patients with severe AS. Compared with age- and sex-matched controls without AS, patients with asymptomatic severe AS showed more impaired LV-GLS ($19.6 \pm 2.1\%$ vs $17.9 \pm 2.5\%$; $P < .001$, respectively) but similar LVEF ($61.5 \pm 5.9\%$ vs $62.1 \pm 6.3\%$; $P < .001$, respectively).³⁰ In addition, the deterioration of LV-GLS further impaired over 12 months of watchful waiting follow-up whereas LVEF remained unchanged.³⁰ These findings suggest that LVEF is a late marker of the consequences of AS on the myocardium. In addition, LV-GLS has incremental prognostic value over LVEF. In an individual patient data-based meta-analysis including patients with severe AS and preserved LVEF, a cutoff value of LV-GLS < 14.7% was associated with a 2.5-fold increase in mortality.³¹ Currently, the guidelines do not include LV-GLS as a

basis for AVR decision-making since there are no prospective, randomized trials basing this decision on LV-GLS values.

Values of LV-GLS have been correlated with CMR-derived parameters of myocardial reactive and replacement fibrosis.³² Extracellular volume fraction and native and postcontrast T₁ mapping values (as surrogates of reactive, interstitial fibrosis) and the presence and mass of late-gadolinium enhancement (reflecting replacement fibrosis) on CMR have been associated with clinical outcomes in patients with AS³³ (figure 4). Both reactive (T₁ mapping) and replacement fibrosis progress as the AVA decreases and the most rapid progression occurs when AS is severe.³⁴ Increased extracellular volume fraction and T₁ mapping values have been associated with adverse LV remodeling and heart failure. However, after AVR, reactive fibrosis regresses and T₁ mapping values decrease.³⁵ In contrast, LGE does not disappear once the aortic valve has been replaced. A noninfarct-like pattern of LGE is more frequently observed than an infarct-like pattern in patients with severe AS.³⁶ Right ventricular insertion points, patchy focal and mid-wall myocardial enhancement are the most common locations of noninfarct-like pattern of LGE. The presence of LGE is associated with reduced survival and lack of improvement in clinical symptoms after AVR.^{37,38} Therefore, it is conceivable that characterization of myocardial fibrosis in AS may help to better define the timing of intervention. Studies such as the EVOLVED trial will clarify the role of CMR in the risk stratification of these patients.³⁹

Recently, an association between AS and transthyretin cardiac amyloidosis (ATTR-CA) has been described in various series.^{40,41} Both diseases are associated with the aging process of the population, and their prevalence increases with age. The deposition of amyloid protein in the interstitial extracellular matrix leads to LV hypertrophy, which may be impossible to differentiate from that caused by AS alone. Red flags increasing the suspicion of ATTR-CA include hypertrophy of the RV and interatrial septum, amarked

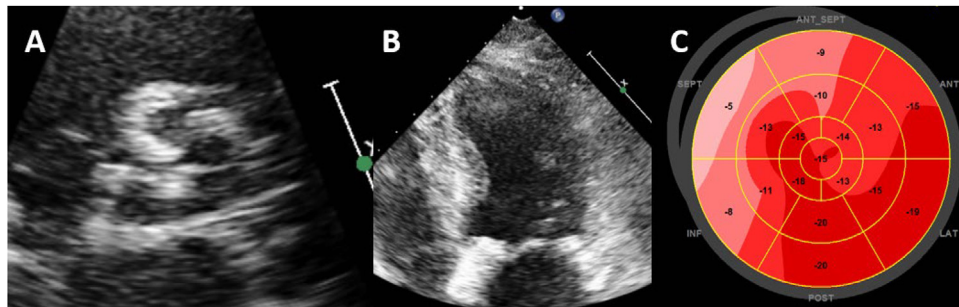


Figure 3. Evaluation of left ventricular systolic function with strain imaging in aortic stenosis. Example of a patient with calcific aortic stenosis. A: short-axis view of the tricuspid aortic valve, calcified, leading to severe hypertrophy of the left ventricle (B). Despite having normal left ventricular ejection fraction, left ventricular global longitudinal strain is impaired, particularly in the most hypertrophied left ventricular segments (C, septal).

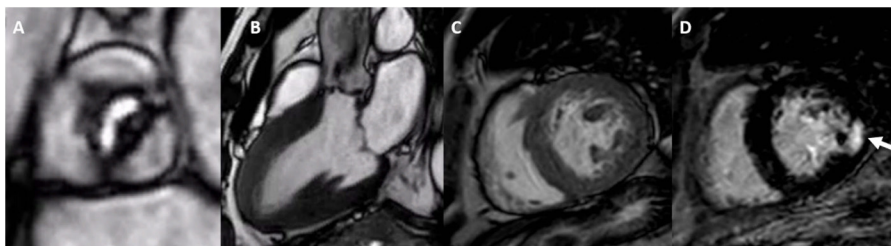


Figure 4. Cardiovascular magnetic resonance of a patient with severe aortic stenosis. The cine images of the aortic valve (A), the 3-chamber (B) and short-axis (C) views of the left ventricle (B) show the restrictive opening of the aortic valve and the marked left ventricular hypertrophy. D: late gadolinium contrast enhancement of the short-axis of the left ventricle with focal fibrosis in the posterior segment (arrow).

restrictive diastolic filling pattern of the LV, and thickened mitral and tricuspid valves. Using speckle tracking echocardiography, the presence of a “cherry pattern” with more preserved longitudinal strain in the apical segments of the LV compared with the mid and basal segments also suggests the presence of ATTR-CA but is not specific.⁴² The increased awareness of ATTR-CA, the advent of effective therapies to halt the disease process and the increased use of technetium 99m pyrophosphate (Tc-99m PYP) scintigraphy as diagnostic gatekeeper, have significantly increased the prevalence of this disease (figure 5). Among patients with severe AS undergoing transcatheter aortic valve implantation, the prevalence of ATTR-CA ranges between 8% and 16% whereas, among patients with cardiac amyloidosis, the prevalence of severe AS is 1.8%.^{40,43} Without treatment, the association of both diseases has a dismal prognosis.⁴⁴ However, transcatheter aortic valve implantation has been associated with improved survival.^{40,41} There remain several unknowns in this conundrum. The true prevalence of ATTR-CA among patients with AS remains unknown because Tc-99m PYP scintigraphy, which is a more sensitive and specific imaging test than CMR or speckle tracking echocardiography, is not systematically performed. The pathophysiological association between both diseases, ATTR-CA and AS, is not fully understood and while both of them are associated with age, there remains the hypothesis that amyloid deposition could be the cause of the cardiomyopathy and AS. Infiltration of the aortic cusps could be a trigger for endothelial damage and calcification.⁴⁵ Finally, AVR, when indicated, is associated with better survival than medical therapy. However, patients with concomitant ATTR-CA remain at high risk of heart failure hospitalizations after AVR, suggesting the need for close follow-up. Whether disease-modifying therapies for amyloid cardiomyopathy after AVR would lead to better survival remains to be investigated.

NEW IMAGING INSIGHTS INTO THE PATHOPHYSIOLOGY OF AORTIC VALVE STENOSIS AND POTENTIAL FOR DEVELOPMENT OF MEDICAL THERAPY

Medical therapies targeting the progression of calcific AS to delay AVR have been tested in several randomized clinical trials. These therapies include lipid-lowering therapies, renin-angiotensin-aldosterone system inhibitors, drugs with metabolic targets that promote osteogenesis of the valve.⁴⁶ However, the results have so far been discouraging since no therapy has been demonstrated to be efficacious. Several hypotheses have been proposed to explain the results of the trials. First, among the

patients included in those trials, the disease was possibly too advanced (moderate and severe AS) for medical therapy to be able to halt disease progression, or the disease was at a very early stage (aortic sclerosis or mild AS), which would need very long-term follow-up to demonstrate the efficacy of the medical treatment. In addition, most of the trials used echocardiographic endpoints to assess disease progression and these endpoints consisted of the hemodynamic consequences of the AS (eg, peak jet aortic velocity, mean transvalvular gradient...), which could be influenced by other variables and not only by the aortic valve itself (eg, LVEF, blood systolic pressure...).

In this regard, CT and nuclear techniques have provided new tools to monitor the progression of the calcific process of the aortic valve and could perhaps lead to new imaging endpoints that could show the efficacy of these therapies. Assessment of aortic valve calcium burden with noncontrast-enhanced CT is reproducible and the technique has an excellent scan-rescan repeatability. Furthermore, the amount of calcium in the aortic valve has been associated with the severity of AS and the occurrence of adverse cardiovascular events.^{14,15,23} This has resulted in the adoption of this imaging technique to monitor the progression of aortic valve calcification and its use as the primary efficacy endpoint of several randomized clinical trials testing novel treatments.^{47,48} In addition, calcification activity and inflammation of the aortic valve can be assessed with nuclear techniques. ¹⁸F-fluorodeoxyglucose (¹⁸F-FDG) and ¹⁸F-sodium fluoride (¹⁸F-NaF) are 2 positron emission tomography (PET) radiotracers that assess, respectively, inflammation and calcification activity^{49,50} (figure 6). The aortic valve uptake of ¹⁸F-NaF correlates with the progression of aortic valve calcium score on noncontrast CT whereas the uptake of ¹⁸F-FDG does not.⁴⁹ Therefore, ¹⁸F-NaF PET would be a suitable imaging technique to measure the progression of calcific AS and measure the efficacy of medical therapy. Unfortunately, the potential medical therapies evaluated in randomized clinical trials that have used CT or ¹⁸F-NaF PET endpoints have not been shown to be efficacious. The SALTIRE2 trial randomized 150 patients with calcific AS to denosumab or alendronic acid (bone resorption inhibitors) vs placebo and showed that these drugs did not affect disease progression and no differences in change in aortic valve calcium score on CT or in uptake of ¹⁸F-NaF on PET were observed across the randomization arms.⁴⁷ One of the most plausible reasons to explain these findings was that the osteoclasts in the vasculature are nonfunctional and, therefore, any inhibitor targeting osteoclastic resorption (such as bisphosphonates) will not be efficacious in modulating cardiovascular calcification.⁵¹

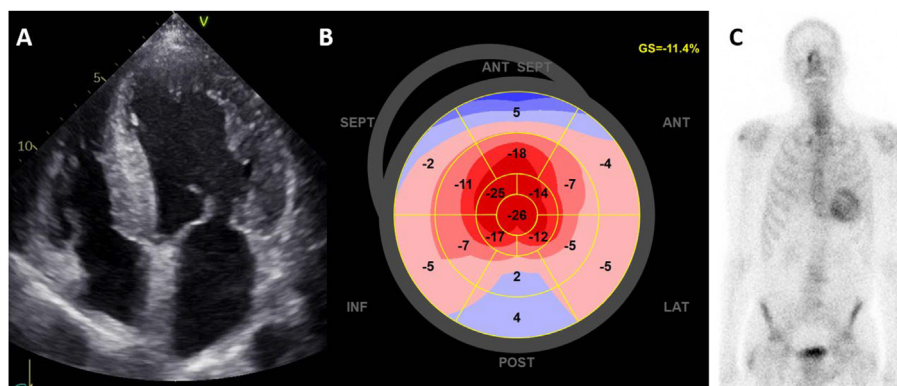


Figure 5. Transthyretin cardiac amyloidosis in a patient with severe aortic stenosis. A: apical 4-chamber view with concentric hypertrophy of the left ventricle, thickened mitral leaflets and dilated atria. On echocardiographic strain analysis, the bull's eye plot of the left ventricle shows apical sparing with more preserved values of longitudinal strain in the apex (B). On bone-scintigraphy, there is uptake by the heart (C). GS, global strain.

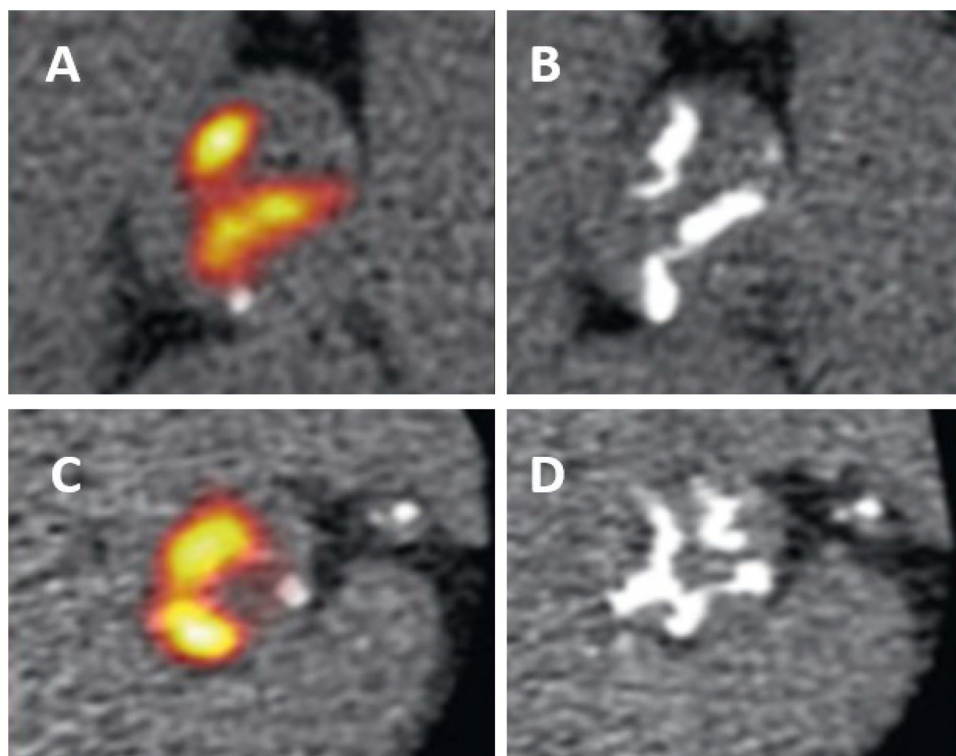


Figure 6. ^{18}F -NaF positron emission tomography of 2 patients with calcific aortic stenosis. Panels A and C show the increased valvular ^{18}F -NaF PET uptake at baseline, which predicted progression to macrocalcification on computed tomography after 2 years (B, D). Reproduced with permission from Zheng et al.⁵⁰.

The AVADEC trial randomized 365 men with calcific AS defined by an aortic valve calcium score ≥ 300 arbitrary units but with a peak aortic jet velocity ≤ 3 m/s to menaquinone-7 vs placebo.⁴⁸ Menaquinone-7, also known as vitamin K2, is a cofactor involved in the carboxylation of proteins that inhibit arterial calcification. Progression of aortic valve calcification was assessed with noncontrast CT and measurement of the aortic valve calcium score at a 2-year follow-up. There were no significant differences in the changes in aortic valve calcium score between the 2 randomization arms and, therefore, the study concluded that menaquinone-7 did not influence the aortic valve calcification process. Importantly, the trial only included men and the effects of this treatment in women remain unknown. Ongoing randomized clinical trials will provide additional information on the use of these imaging techniques to test the efficacy of medical therapies.⁴⁶ The radiation burden associated with these techniques will need to be taken into consideration when setting the follow-up of patients under medical therapy.

CONCLUSIONS

While echocardiography remains the mainstay imaging technique to evaluate patients with calcific AS, the information provided by other imaging techniques allowing the characterization of the myocardial changes induced by the pressure overload and the calcific process of the aortic valve, has opened up a myriad of opportunities to rethink the management of the disease. The ability to detect early structural changes in the LV myocardium that may not be resolved by AVR and may impact negatively on clinical outcomes opens up the possibility to refer patients earlier to AVR. Imaging techniques that allow monitoring of the calcific process of the aortic valve may help to find efficacious medical therapies that will delay or even avoid AVR.

FUNDING

None.

AUTHORS' CONTRIBUTIONS

E. Ferrer-Sistach: review of the literature, drafting the manuscript, final approval. A. Teis: critical review of the manuscript and final approval, providing illustration advice. A. Bayés-Genís: critical review of the manuscript and final approval. V. Delgado: review of the literature, drafting the manuscript, final approval; illustrations.

CONFLICTS OF INTEREST

V. Delgado receives speaker fees from Abbott Vascular, Edwards Lifesciences, Medtronic, Novartis, and GE Healthcare. A. Bayés-Genís has lectured or participated in the advisory boards of Abbott, AstraZeneca, Boehringer-Ingelheim, Novartis, Roche Diagnostics, and Vifor. The remaining authors have nothing to disclose.

REFERENCES

1. Iung B, Delgado V, Rosenhek R, et al. Contemporary Presentation and Management of Valvular Heart Disease: The EURObservational Research Programme Valvular Heart Disease II Survey. *Circulation*. 2019;140:1156–1169.
2. Yadgir S, Johnson CO, Aboyans V, et al. Global Regional, and National Burden of Calcific Aortic Valve and Degenerative Mitral Valve Diseases, 1990–2017. *Circulation*. 2020;141:1670–1680.
3. Nishimura RA, Otto CM, Bonow RO, et al. 2017 AHA/ACC Focused Update of the 2014 AHA/ACC Guideline for the Management of Patients With Valvular Heart Disease: A Report of the American College of Cardiology/American Heart Association Task Force on Clinical Practice Guidelines. *Circulation*. 2017;135:e1159–e1195.

4. Vahanian A, Beyersdorf F, Praz F, et al. 2021 ESC/EACTS Guidelines for the management of valvular heart disease. *Eur Heart J*. 2022;43:561–632.
5. Lancellotti P, Magne J, Dulgheru R, et al. Outcomes of Patients with Asymptomatic Aortic Stenosis Followed Up in Heart Valve Clinics. *JAMA Cardiol*. 2018;3:1060–1068.
6. Bohbot Y, de Meester de Ravenstein C, Chadha G, et al. Relationship Between Left Ventricular Ejection Fraction and Mortality in Asymptomatic and Minimally Symptomatic Patients With Severe Aortic Stenosis. *JACC Cardiovasc Imaging*. 2019;12:38–48.
7. Tastet L, Tribouilloy C, Maréchaux S, et al. Staging Cardiac Damage in Patients With Asymptomatic Aortic Valve Stenosis. *J Am Coll Cardiol*. 2019;74:550–563.
8. Capoulade R, Le Ven F, Clavel M-A, et al. Echocardiographic predictors of outcomes in adults with aortic stenosis. *Heart*. 2016;102:934–942.
9. Bohbot Y, Kowalski C, Rusinaru D, Ringle A, Marechaux S, Tribouilloy C. Impact of Mean Transaortic Pressure Gradient on Long-Term Outcome in Patients With Severe Aortic Stenosis and Preserved Left Ventricular Ejection Fraction. *J Am Heart Assoc*. 2017;6:e005850.
10. Rosenhek R, Zilberszac R, Schemper M, et al. Natural History of Very Severe Aortic Stenosis. *Circulation*. 2010;121:151–156.
11. Baumgartner H, Hung J, Bermejo J, et al. Recommendations on the echocardiographic assessment of aortic valve stenosis: a focused update from the European Association of Cardiovascular Imaging and the American Society of Echocardiography. *Eur Heart J Cardiovasc Imaging*. 2017;18:254–275.
12. Annabi M-S, Touboul E, Dahou A, et al. Dobutamine Stress Echocardiography for Management of Low-Flow. *Low-Gradient Aortic Stenosis J Am Coll Cardiol*. 2018;71:475–485.
13. Hachicha Z, Dumesnil JG, Bogaty P, Pibarot P. Paradoxical low-flow, low-gradient severe aortic stenosis despite preserved ejection fraction is associated with higher afterload and reduced survival. *Circulation*. 2007;115:2856–2864.
14. Clavel M-A, Pibarot P, Messika-Zeitoun D, et al. Impact of Aortic Valve Calcification, as Measured by MDCT, on Survival in Patients With Aortic Stenosis. *J Am Coll Cardiol*. 2014;64:1202–1213.
15. Pawade T, Clavel M-A, Tribouilloy C, et al. Computed Tomography Aortic Valve Calcium Scoring in Patients With Aortic Stenosis. *Circ Cardiovasc Imaging*. 2018;11:e007146.
16. Ternacle J, Krapf L, Mohty D, et al. Aortic Stenosis and Cardiac Amyloidosis: JACC Review Topic of the Week. *J Am Coll Cardiol*. 2019;74:2638–2651.
17. Cowell SJ, Newby DE, Prescott RJ, et al. A randomized trial of intensive lipid-lowering therapy in calcific aortic stenosis. *N Engl J Med*. 2005;352:2389–2397.
18. Baumgartner H, Hung J, Bermejo J, et al. Recommendations on the echocardiographic assessment of aortic valve stenosis: a focused update from the European Association of Cardiovascular Imaging and the American Society of Echocardiography. *Eur Heart J Cardiovasc Imaging*. 2017;18:254–275.
19. Tribouilloy C, Lévy F, Rusinaru D, et al. Outcome After Aortic Valve Replacement for Low-Flow/Low-Gradient Aortic Stenosis Without Contractile Reserve on Dobutamine Stress Echocardiography. *J Am Coll Cardiol*. 2009;53:1865–1873.
20. Hachicha Z, Dumesnil JG, Bogaty P, Pibarot P. Paradoxical Low-Flow. *Low-Gradient Severe Aortic Stenosis Despite Preserved Ejection Fraction Is Associated With Higher Afterload and Reduced Survival Circulation*. 2007;115:2856–2864.
21. Clavel M-A, Burwash IG, Mundigler G, et al. Validation of Conventional and Simplified Methods to Calculate Projected Valve Area at Normal Flow Rate in Patients With Low Flow. *Low Gradient Aortic Stenosis: The Multicenter TOPAS (True or Pseudo Severe Aortic Stenosis) Study J Am Soc Echocardiogr*. 2010;23:380–386.
22. Clavel M-A, Ennezat PV, Maréchaux S, et al. Stress Echocardiography to Assess Stenosis Severity and Predict Outcome in Patients With Paradoxical Low-Flow, Low-Gradient Aortic Stenosis and Preserved LVEF. *JACC Cardiovasc Imaging*. 2013;6:175–183.
23. Clavel M-A, Malouf J, Messika-Zeitoun D, Araoz PA, Michelena HI, Enriquez-Sarano M. Aortic valve area calculation in aortic stenosis by CT and Doppler echocardiography. *JACC Cardiovasc Imaging*. 2015;8:248–257.
24. Cartledge TR, Bing R, Kwiecinski J, et al. Contrast-enhanced computed tomography assessment of aortic stenosis. *Heart*. 2021;107:1905–1911.
25. Chaker Z, Badhwar V, Alqahtani F, et al. Sex Differences in the Utilization and Outcomes of Surgical Aortic Valve Replacement for Severe Aortic Stenosis. *J Am Heart Assoc*. 2017;6:e006370.
26. Kang D-H, Park S-J, Lee S-A, et al. Early Surgery or Conservative Care for Asymptomatic Aortic Stenosis. *N Engl J Med*. 2020;382:111–119.
27. Banovic M, Putnik S, Penicka M, et al. Aortic Valve Replacement Versus Conservative Treatment in Asymptomatic Severe Aortic Stenosis: The AVATAR Trial. *Circulation*. 2022;145:648–658.
28. Krayenbuehl HP, Hess OM, Monrad ES, Schneider J, Mall G, Turina M. Left ventricular myocardial structure in aortic valve disease before, intermediate, and late after aortic valve replacement. *Circulation*. 1989;79:744–755.
29. Rajappan K, Rimoldi OE, Dutka DP, et al. Mechanisms of Coronary Microcirculatory Dysfunction in Patients With Aortic Stenosis and Angiographically Normal Coronary Arteries. *Circulation*. 2002;105:470–476.
30. Vollema EM, Sugimoto T, Shen M, et al. Association of Left Ventricular Global Longitudinal Strain With Asymptomatic Severe Aortic Stenosis: Natural Course and Prognostic Value. *JAMA Cardiol*. 2018;3:839–847.
31. Magne J, Cosyns B, Popescu BA, et al. Distribution and Prognostic Significance of Left Ventricular Global Longitudinal Strain in Asymptomatic Significant Aortic Stenosis: An Individual Participant Data Meta-Analysis. *JACC Cardiovasc Imaging*. 2019;12:84–92.
32. Park S-J, Cho SW, Kim SM, et al. Assessment of Myocardial Fibrosis Using Multimodality Imaging in Severe Aortic Stenosis. *JACC Cardiovasc Imaging*. 2019;12:109–119.
33. Bing R, Cavalcante JL, Everett RJ, Clavel M-A, Newby DE, Dweck MR. Imaging and Impact of Myocardial Fibrosis in Aortic Stenosis. *JACC Cardiovasc Imaging*. 2019;12:283–296.
34. Everett RJ, Tastet L, Clavel M-A, et al. Progression of Hypertrophy and Myocardial Fibrosis in Aortic Stenosis. *Circ Cardiovasc Imaging*. 2018;11:e007451.
35. Treibel TA, Kozor R, Schofield R, et al. Reverse Myocardial Remodeling Following Valve Replacement in Patients With Aortic Stenosis. *J Am Coll Cardiol*. 2018;71:860–871.
36. Treibel TA, López B, González A, et al. Reappraising myocardial fibrosis in severe aortic stenosis: an invasive and non-invasive study in 133 patients. *Eur Heart J*. 2018;39:699–709.
37. Puntmann VO, Peker E, Chandrashekar Y, Nagel E. T1 Mapping in Characterizing Myocardial Disease: A Comprehensive Review. *Circ Res*. 2016;119:277–299.
38. Lee H, Park J-B, Yoon YE, et al. Noncontrast Myocardial T1 Mapping by Cardiac Magnetic Resonance Predicts Outcome in Patients With Aortic Stenosis. *JACC Cardiovasc Imaging*. 2018;11:974–983.
39. Bing R, Everett RJ, Tuck C, et al. Rationale and design of the randomized, controlled Early Valve Replacement Guided by Biomarkers of Left Ventricular Decompensation in Asymptomatic Patients with Severe Aortic Stenosis (EVOLVED) trial. *Am Heart J*. 2019;212:91–100.
40. Nitsche C, Scully PR, Patel KP, et al. Prevalence and Outcomes of Concomitant Aortic Stenosis and Cardiac Amyloidosis. *J Am Coll Cardiol*. 2021;77:128–139.
41. Rosenblum H, Masri A, Narotsky DL, et al. Unveiling outcomes in coexisting severe aortic stenosis and transthyretin cardiac amyloidosis. *Eur J Heart Fail*. 2021;23:250–258.
42. Phelan D, Collier P, Thavendirathan P, et al. Relative apical sparing of longitudinal strain using two-dimensional speckle-tracking echocardiography is both sensitive and specific for the diagnosis of cardiac amyloidosis. *Heart*. 2012;98:1442–1448.
43. Castaño A, Narotsky DL, Hamid N, et al. Unveiling transthyretin cardiac amyloidosis and its predictors among elderly patients with severe aortic stenosis undergoing transcatheter aortic valve replacement. *Eur Heart J*. 2017;38:2879–2887.
44. Chacko L, Martone R, Bandera F, et al. Echocardiographic phenotype and prognosis in transthyretin cardiac amyloidosis. *Eur Heart J*. 2020;41:1439–1447.
45. Fabbri G, Serenelli M, Cantone A, Sanguetoli F, Rapezzi C. Transthyretin amyloidosis in aortic stenosis: clinical and therapeutic implications. *Eur Heart J Suppl*. 2021;23(Suppl-E):E128–E132.
46. Marquis-Gravel G, Redfors B, Leon MB, Gèneux P. Medical Treatment of Aortic Stenosis. *Circulation*. 2016;134:1766–1784.
47. Pawade TA, Doris MK, Bing R, et al. Effect of Denosumab or Alendronic Acid on the Progression of Aortic Stenosis: A Double-Blind Randomized Controlled Trial. *Circulation*. 2021;143:2418–2427.
48. Diederichsen ACP, Lindholt JS, Möller S, et al. Vitamin K2 and D in Patients With Aortic Valve Calcification: A Randomized Double-Blinded Clinical Trial. *Circulation*. 2022;145:1387–1397.
49. Dweck MR, Jenkins WSA, Vesey AT, et al. 18F-sodium fluoride uptake is a marker of active calcification and disease progression in patients with aortic stenosis. *Circ Cardiovasc Imaging*. 2014;7:371–378.
50. Zheng KH, Tsimikas S, Pawade T, et al. Lipoprotein(a) and Oxidized Phospholipids Promote Valve Calcification in Patients With Aortic Stenosis. *J Am Coll Cardiol*. 2019;73:2150–2162.
51. Demer LL, Tintut Y. Hearts of Stone: Calcific Aortic Stenosis and Antiresorptive Agents for Osteoporosis. *Circulation*. 2021;143:2428–2430.