



**Universiteit
Leiden**
The Netherlands

Understanding and Targeting Coronaviruses: exploring advanced cell culture models and host-directed antiviral strategies

Thaler, M.

Citation

Thaler, M. (2024, July 2). *Understanding and Targeting Coronaviruses: exploring advanced cell culture models and host-directed antiviral strategies*. Retrieved from <https://hdl.handle.net/1887/3765868>

Version: Publisher's Version

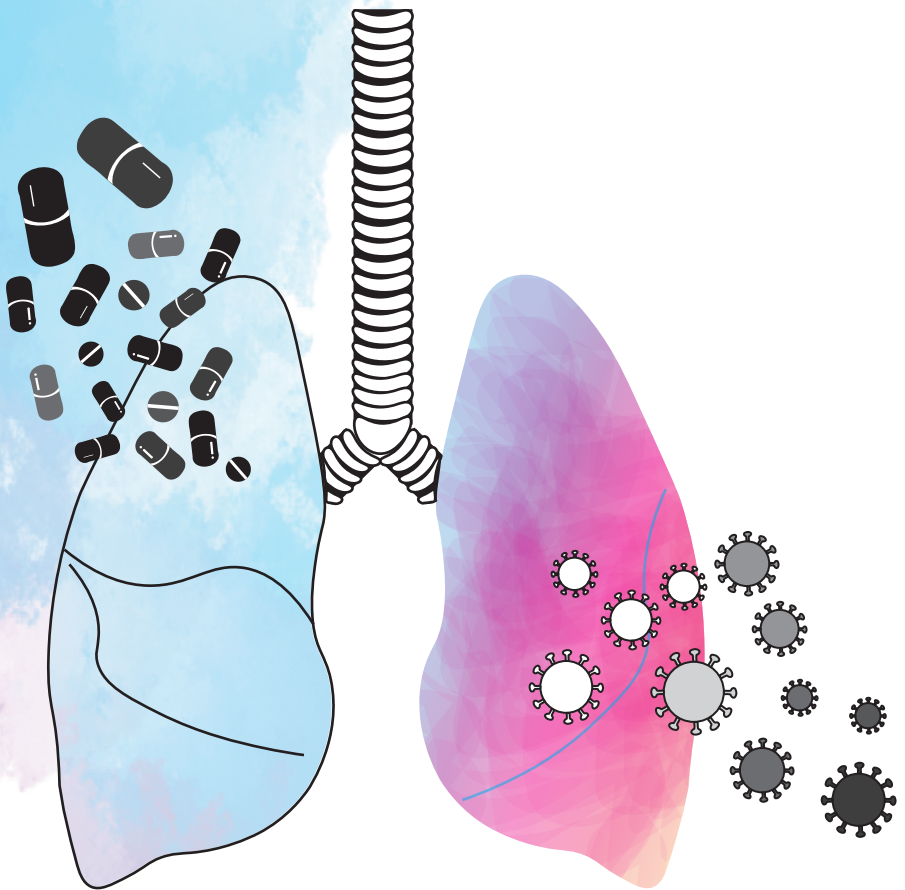
License: [Licence agreement concerning inclusion of doctoral thesis in the Institutional Repository of the University of Leiden](#)

Downloaded from: <https://hdl.handle.net/1887/3765868>

Note: To cite this publication please use the final published version (if applicable).

UNDERSTANDING AND TARGETING CORONAVIRUSES

Exploring advanced cell culture models
and host-directed antiviral strategies



Melissa Thaler

