



Universiteit
Leiden

The Netherlands

Neonatal Brachial Plexus Palsy: the role of diminished sensibility of the hand on functional recovery

Buitenhuis, S.M.

Citation

Buitenhuis, S. M. (2024, June 11). *Neonatal Brachial Plexus Palsy: the role of diminished sensibility of the hand on functional recovery*. Retrieved from <https://hdl.handle.net/1887/3762692>

Version: Publisher's Version

License: [Licence agreement concerning inclusion of doctoral thesis in the Institutional Repository of the University of Leiden](#)

Downloaded from: <https://hdl.handle.net/1887/3762692>

Note: To cite this publication please use the final published version (if applicable).

Chapter 7

Neonatal Brachial Plexus Palsy and Central Developmental Disability

Sonja M. Buitenhuis, Rietje S. van Wijlen-Hempel, Willem Pondaag, Martijn J.A. Malessy

Abstract

Objective

First, to assess whether children with an neonatal brachial plexus palsy (NBPP) have a higher incidence of Central Developmental Disability (CDD) compared to the general population. Second, to test the ability of fidgety General Movements (GMs) to identify CDD children already at three months of age.

Patients and Method

From a prospective cohort study of 48 infants with NBPP, for 38 children videos were available to assess GMs at the age of 3 months. Demographic data and severity of the brachial plexus lesion were additionally scored. At a mean age of 4.8 years the children were evaluated for the presence or absence of CDD.

Results

Five patients (13%) had CDD. One patient had a cerebral palsy and four showed definite other motor and/or mental problems. There was no correlation between the quality of the GMs at three months and CDD. There was no correlation between the severity of the nerve lesion and CDD. We found a correlation between quality of the GMs and severity of the nerve lesion.

Conclusions

Children with NBPP have a high incidence of CDD. In our cohort fidgety GMs had no predictive value for CDD at a later age.

INTRODUCTION

Neonatal brachial plexus palsy (NBPP) are caused by traction during delivery.^{1, 2} The resulting nerve injury may vary from neurapraxia or axonotmesis to neurotmesis and avulsion of rootlets from the spinal cord. The degree of spontaneous recovery correlates inversely with the severity of the nerve lesion.

The upper part of the brachial plexus is most commonly affected, resulting in paresis of shoulder abduction, external rotation and elbow flexion. In more severe cases, the remaining parts of the plexus are also involved.

Fortunately, most children show good spontaneous recovery. Despite important flaws in methodology of natural history studies, it may be concluded that the percentage of children with residual deficits probably ranges between 20 and 30 %.³

NBPP is a disorder of the peripheral nervous system. In our tertiary NBPP referral center, we are regularly confronted with infants with coinciding developmental problems or neurological disorders of the central nervous system. For instance, we saw children with NBPP and cerebral palsy (CP), developmental coordination disorder or mental retardation, but also behavioural problems, such as Attention Deficit Hyperactivity Disorder (ADHD). For the purpose of this study, all of these entities are grouped and referred to as Central Developmental Disability (CDD). It appeared that such problems occur more frequently in children with NBPP than in the normal population; to our knowledge, however, systematic research on the presence of coinciding CDD in children with NBPP has not been performed so far. Only one previous publication described a high incidence of developmental and behavioural problems in surgically treated NBPP infants.⁴

A correlation between the occurrence of NBPP and CDD seems logical. Children with NBPP usually have a history of a difficult delivery. Such a frustrated delivery is correlated with a higher incidence of performing multiple obstetric manoeuvres and prolonged second stage of labour.^{5, 6} An additional consequence of a traumatic delivery could potentially be damage to the central nervous system, which in turn might lead to developmental delay or neurological disorder.

CDD can be predicted by scoring General Movements (GMs) in children of 3 months of age. These GMs are spontaneous movements of all body parts. GMs have shown to be a reliable tool for the prediction of central neurological problems; especially the quality of fidgety GMs

at the age of three months has a high predictive value for developmental outcome at later age.⁷ Abnormal GMs have an incidence of 5% in the general population.⁸ The incidence in the Dutch population of developmental problems is around 4%⁹, of cerebral palsy 0.1-0.2%¹⁰ and of ADHD 3-5%.¹¹

We studied whether our population of children with NBPP have a higher incidence of CDD as compared to the general population. In addition, we examined whether the GM score can predict which children with NBPP are at risk of CDD. Finally, we looked at correlations between the severity of the nerve lesion, the quality of the fidgety GMs and the presence of CDD.

PATIENTS AND METHODS

The present study was part of a larger project on the value of early electromyography (EMG) to predict outcome in NBPP.¹² The study protocol was approved by the Medical Ethics Committee of the LUMC. Patients were actively and prospectively recruited by announcing the study to appropriate medical specialists in the Netherlands. After informed consent, three visits were scheduled around 1 week, 1 month and 3 months of age. Infants who could not be seen before 2 months of age were excluded. In total 48 infants were included. The infants were filmed at the age of 3 months (mean 87 days, median 87, range 29) in a supine position during 10 minutes without interruption. The recordings were independently scored according to a standardized protocol⁹ by two experienced investigators (SB and MSvW). The fidgety GMs are usually scored in all limbs; in this study the paretic arm was not included. The complexity, fluency and variety of fidgety movements were classified as normal-optimal, normal-suboptimal, mildly abnormal and definitely abnormal. (Table 1)

Table 1 Classification of quality of general movements⁷

Classification		Complexity	Variation	Fluency
Normal	Normal-optimal	+++	+++	+
	Normal-suboptimal	++	++	-
Abnormal	Mildly abnormal	+	+	-
	Definitely abnormal	-	-	-

Fidgety GMs can only be reliably scored in the appropriate behavioural states (not crying, awake).⁷ Whenever the patient was not in the appropriate behavioural state the GMs were not scored.

Demographic data and severity of the brachial plexus lesion were additionally scored. The severity of the NBPP was qualified as either severe or mild.¹² A severe nerve lesion was defined as neurotmesis or avulsion of the roots C5 and C6 (irrespective of the function of the roots C7-C8-T1). A mild lesion was defined as an axonotmesis lesion of C5 and C6 with spontaneous recovery after two years of follow-up of a full range of active elbow flexion, a normal or subtotal range of supination and a normal or nearly normal shoulder function without prominent secondary abnormalities.

Central developmental disability (CDD) was defined in the current analysis as any mental and/or neurological impairment, which was diagnosed or confirmed by an independent specialist, such as the referring paediatric neurologist or paediatric rehabilitation specialist. The final chart review for CDD took place when the infants had a mean age of 4.8 years (range 4.1-5.6).

Statistical analysis

The statistical analysis was performed with the SPSS statistical package 17 (© SPSS Inc). For correlation of the GMs and the severity of the nerve lesion or presence of developmental impairment we applied the chi-square test and the Mann-Whitney test. A p-value of < 0.05 was considered statistically significant.

RESULTS

Of the initial 48 infants, two parents decided to abort the study before the third month, because good spontaneous recovery occurred before that time. A video film could not be made due to technical problems in three infants and it was not possible to score the GMs due to an inappropriate behavioral state of five patients. Eventually, 38 recordings could be scored and were further analyzed. (Figure 1)

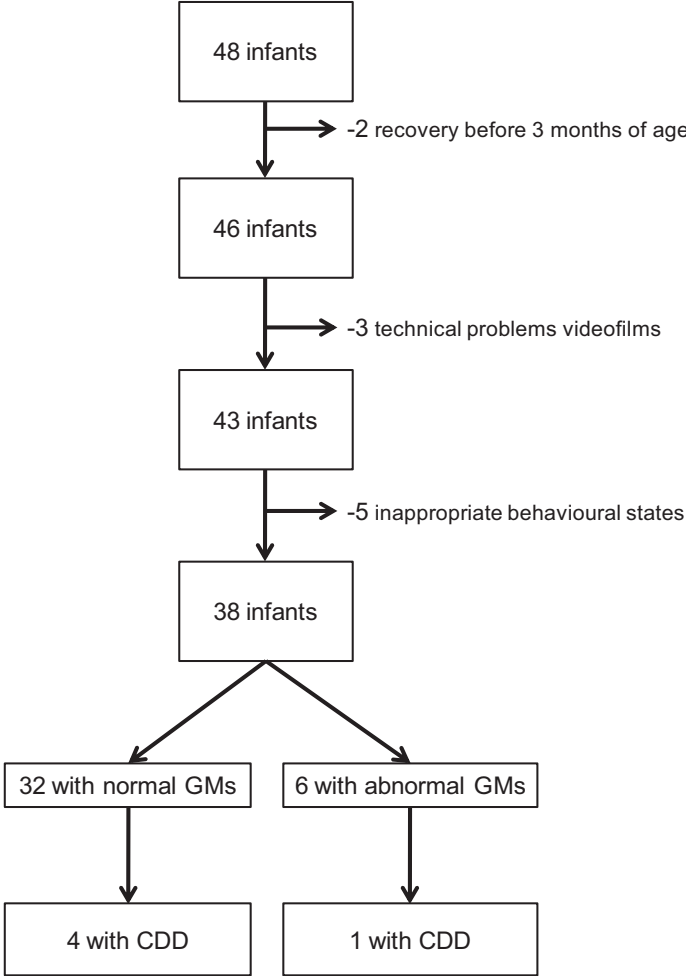


Figure 1 Inclusion and results.

The results of the analysis of the video recordings are presented in Table 2, the inter-observer agreement was 100% (kappa = 1).

A total of five patients had CDD. One patient had a cerebral palsy, and four showed definite other motor or mental problems. The percentage of patients with CDD was 13% (95% confidence interval 2.4-24%). (Table 3) The patient with a cerebral palsy showed normal GMs. The other four showed abnormal GMs in one patient and normal GMs in three patients. (Figure 1, Table 3)

There was no correlation between the quality of fidgety GMs and the presence of CDD.

Table 2 Fidgety GMs, classified by nerve lesion (n = 38)

Fidgety GMs	Severity of NBPP		Total
	Mild	Severe	
Normal-optimal	18	3	21
Normal-suboptimal	5	6	11
Mildly abnormal	1	4	5
Definitely abnormal		1	1
Total	24	14	38

Table 3 Details of five patients with CDD

Condition	GMs score	Nerve lesion
CP: Spastic paresis of both legs	o	Severe
Suspect for developmental coordination disorder and currently examined for epilepsy	so	Mild
Generalised hypotonia and concentration difficulties	a	Severe
ADHD, Motor clumsiness	o	Mild
Clumsy motor behavior, developmental coordination disorder	o	Mild

Legend Table 3

o = optimal; so = suboptimal; a = abnormal

Fourteen children had a severe nerve lesion and the remaining 24 children had a mild nerve lesion. In the group of infants with a severe nerve lesion, four infants had mildly abnormal GMs and one had definitely abnormal GMs.(Table 2) Of five patients with CDD, two had a severe nerve lesion and three a mild nerve lesion.

A statistically significant different distribution was found for GM quality and nerve lesion severity (chi-square = 11.790, with 3 degrees of freedom, $p = 0.008$). Infants with a severe lesion had worse GM scores. (Figure 2) The Mann-Whitney test confirmed statistically significance between the two groups ($p = 0.001$, two-tailed test).

There was no statistical difference for distribution of CDD and nerve lesion severity.

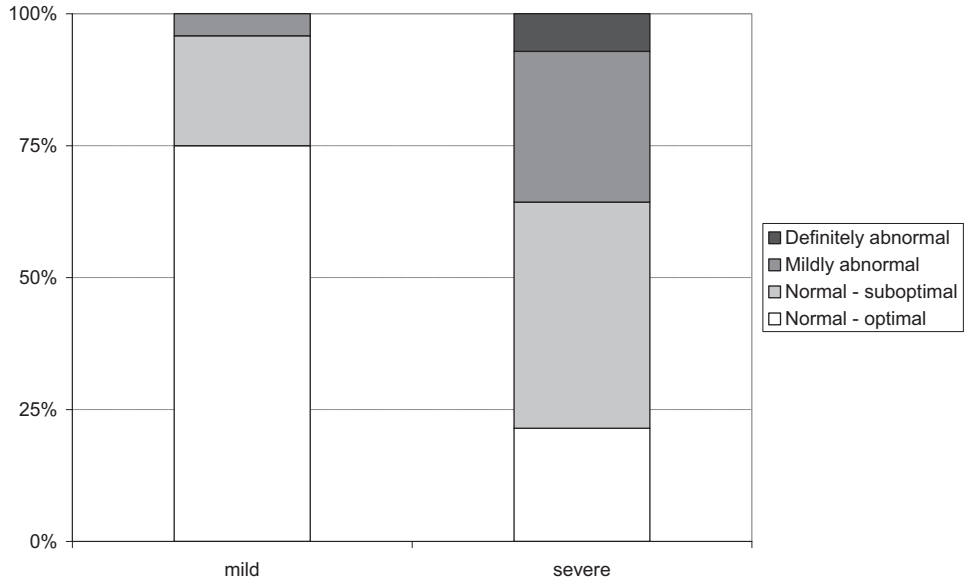


Figure 2 Stacked column chart showing the distribution of the quality of GMs in severe (n = 24) and mild nerve lesions (n = 14).
 $p = 0.008$ (chi-square = 11.790, with 3 degrees of freedom)

DISCUSSION

The first aim of our study was to investigate the incidence of CDD in NBPP infants. (Figure 3) We found that 5 of 38 (13%) of the study group had a motor or developmental impairment in some way. This is higher as compared to the general population. The exact percentage may, however, not be accurate (95% confidence interval 2.4-24%) as our sample population was small. In the Netherlands, CP has an incidence of 0.15 %¹⁰, and CDD / ADHD has an incidence of 5%.¹³

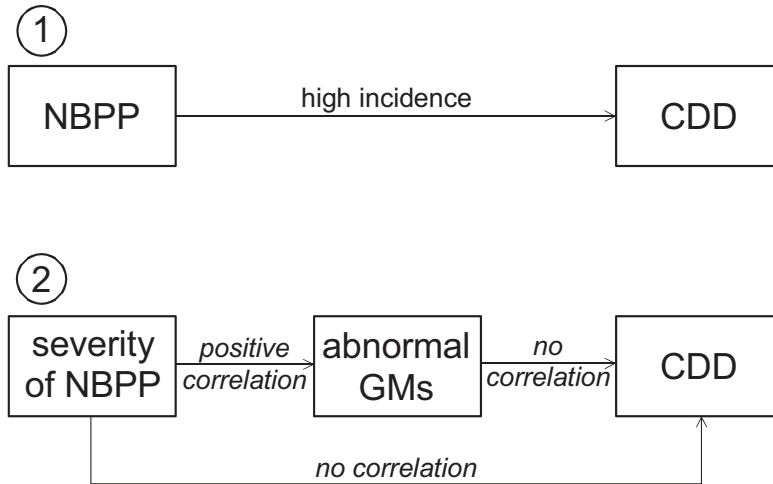


Figure 3 Results: relationships between NBPP, abnormal GMs and CDD

It remains speculative how to explain this apparent higher incidence of coinciding CDD in case of NBPP. One hypothesis is that shoulder dystocia is a risk factor for NBPP. During shoulder dystocia, the risk of hypoxic ischaemic encephalopathy increases with prolonged head-to-body interval.¹⁴ Hypoxic ischaemic encephalopathy may result in cerebral palsy.¹⁵ More recently it was described, that mild or moderate asphyxia is also a risk factor for the development of cognitive/executive dysfunction or memory and/or attention problems, such as we found in our patient cohort.^{16, 17}

Our finding of a high incidence of coinciding CDD in NBPP infants, is in accordance with one previous report. Around half of twenty-three nerve surgically treated NBPP infants scored at or above the cut-off score of twelve of the Pre-School Behaviour Checklist.⁴ The effects in this cohort were independent of the general condition of the child at birth, as indicated by their Apgar scores.

Our second aim was to test correlations between CDD, quality of GMs and severity of the nerve lesion. In the general population abnormal GMs have an incidence of 4%.⁸ In our population, we found that 6 of the 38 children (16%) had a diminished quality of fidgety GMs (5 mildly abnormal, 1 definitely abnormal). This high prevalence could be indicative for a higher risk of these 6 patients for developmental disability at a later age. At follow-up the diminished quality of the GMs could not be correlated to the presence of CDD. There was,

however, a correlation between the severity of the nerve lesion and the quality of the GMs: in patients with a severe nerve lesion, an increase in abnormal and suboptimal GMs was found. (Figure 3)

There was no correlation between the severity of the nerve lesion and presence of CDD. In an earlier study, we studied children with a NBPP and the age of independent walking.¹⁸ We found that 80% of children could walk independently at a normal age of 12.1 months (SD 1,8 months, P1: 8,2 months, P99 17.6 months).¹⁹ There seemed to be a delay in about 20% of children, which did not correlate with the severity of the nerve lesion.

We tried to predict the occurrence of CDD at a later age using GMs at the age of three months. GMs are spontaneous movements of all body parts which can be observed during pregnancy and early childhood. The quality of the fidgety GMs at the age of three months has a high predictive value for development disorders at later age. Especially the presence of *definitely abnormal* GMs at fidgety age, which implies a total absence of the elegant, dancing complexity of fidgety movements, has a claimed accuracy of predicting cerebral palsy of 85% to 98% in high-risk populations.⁷ The remaining 2-15% of infants with definitely abnormal GMs show other developmental problems, such as minor neurological dysfunction, attention deficit hyperactivity disorder or cognitive problems. *Mildly abnormal* GMs at fidgety age are related to the development of minor neurological dysfunction, attention deficit hyperactivity disorder and aggressive behaviour, but the accuracy to predict these problems is modest due to relatively many false positives, resulting in a small positive predictive value.^{7, 20}

In our present patient series only one child was scored as having definitely abnormal GMs. This patient developed a generalized hypotonia and concentration problems. The remaining four children that showed CDD during follow-up scored normal or suboptimal GMs. From the one patient that proved to develop a spastic paresis of both legs, the fidgety GMs were scored as normal.

The reasons why prediction of CDD on the basis of the GMs in our patient group was not possible, remains speculative. As we found CDD in 13% of our cohort, NBPP infants may be considered a high-risk group. Two hypothesis will be discussed.

First, fidgety GMs may not be reliably scored in the presence of an NBPP, due to the presence of upper limb paresis on one side. The diminished quality of fidgety GMs might be the result of the paresis. However, 3-month-old infants were investigated with one or more fixed or immobilized arm.²¹ Immobilization can be considered to result in a comparable to that in NBPP. It was found that immobilization did not influence the quality of fidgety GMs²¹. The evaluation of GMs in children with an NBPP should therefore, theoretically, not be hindered by the presence of the paresis.

A second reason for the present results could be that the applied methodology to assess developmental disorders was inappropriate. The mean follow-up time of 4.8 years might have been too short. Minor developmental problems are usually only diagnosed in children beyond the age of eight years. In addition, a validated method to assess motor development in children with NBPP does not exist. The available scoring methods, like the Bayley Scales of Infant Development²² and the Movement Assessment Battery for Children²³, depend on bimanual activity of the examined child. It is intuitive that these scoring methods cannot be applied to infants that have an NBPP.

Weaknesses of our study consist firstly of an inclusion bias. The investigated patients were actively recruited for enrolment in the EMG-study and seen at our tertiary referral centre. This may lead to an overestimation of the part of patient with a severe nerve lesion. However, as the present study has a descriptive nature, this should not influence our results. Secondly, the investigators were not formally blinded to the severity of the nerve lesion. Although the affected arm was not taken into account during the evaluation of the fidgety GMs, both investigators have substantial clinical experience in patients with an NBPP to recognise a severe or mild nerve lesion. This might have influenced the scoring of GMs one way or another.

CONCLUSION

Children with NBPP have a higher incidence of central neurological or development problems. In a cohort of 38 patients with NBPP we found a diminished quality of fidgety GMs at the age of three months. However, this could not be matched to developmental disorders at a later age. There was no relationship between the severity of the NBPP and later

Chapter 7

developmental problems. Because the incidence of developmental disorders was quite high, the results of this study support a long-term follow-up of infants with an NBPP, with special attention to developmental disorders. A validated development test for children with a NBPP should be developed and applied in this age group.

REFERENCES

1. Clark LP, Taylor AS, Prout TP. A study on brachial birth palsy. *Am J Med Sci* 1905;130(4):670-705.
2. Metaizeau JP, Gayet C, Plenat F. [Brachial plexus birth injuries. An experimental study.] [in French]. *Chir Pediatr* 1979;20(3):159-63.
3. Pondaag W, Malessy MJ, van Dijk JG, Thomeer RT. Natural history of obstetric brachial plexus palsy: a systematic review. *Dev Med Child Neurol* 2004 February;46(2):138-44.
4. Bellew M, Kay SP, Webb F, Ward A. Developmental and behavioural outcome in obstetric brachial plexus palsy. *J Hand Surg Br* 2000 February;25(1):49-51.
5. Mollberg M, Wennergren M, Bager B, Ladfors L, Hagberg H. Obstetric brachial plexus palsy: a prospective study on risk factors related to manual assistance during the second stage of labor. *Acta Obstet Gynecol Scand* 2007;86(2):198-204.
6. Mehta SH, Blackwell SC, Bujold E, Sokol RJ. What factors are associated with neonatal injury following shoulder dystocia? *J Perinatol* 2006 February;26(2):85-8.
7. Hadders-Algra M. General movements: A window for early identification of children at high risk for developmental disorders. *J Pediatr* 2004 August;145(2 Suppl):S12-S18.
8. Bouwstra H, Dijk-Stigter GR, Grooten HM, Janssen-Plas FE, Koopmans AJ, Mulder CD et al. Prevalence of abnormal general movements in three-month-old infants. *Early Hum Dev* 2009 June;85(6):399-403.
9. Kerstjens JM, de Winter AF, Bocca-Tjeertes IF, Ten Vergert EM, Reijneveld SA, Bos AF. Developmental Delay in Moderately Preterm-Born Children at School Entry. *J Pediatr* 2011 February 14.
10. Wichers MJ, van der Schouw YT, Moons KG, Stam HJ, van NO. Prevalence of cerebral palsy in The Netherlands (1977-1988). *Eur J Epidemiol* 2001;17(6):527-32.
11. Fliers E, Rommelse N, Vermeulen SH, Altink M, Buschgens CJ, Faraone SV et al. Motor coordination problems in children and adolescents with ADHD rated by parents and teachers: effects of age and gender. *J Neural Transm* 2008;115(2):211-20.
12. Malessy MJ, Pondaag W, Hofstede-Buitenhuis SM, leCessie S, van Dijk JG. Severe obstetric brachial plexus injuries can be identified easily and reliably at one month of age. 2007.
13. Flapper BC, Schoemaker MM. Effects of methylphenidate on quality of life in children with both developmental coordination disorder and ADHD. *Dev Med Child Neurol* 2008 April;50(4):294-9.
14. Leung TY, Stuart O, Sahota DS, Suen SS, Lau TK, Lao TT. Head-to-body delivery interval and risk of fetal acidosis and hypoxic ischaemic encephalopathy in shoulder dystocia: a retrospective review. *BJOG* 2011 March;118(4):474-9.
15. Ehrenstein V. Association of Apgar scores with death and neurologic disability. *Clin Epidemiol* 2009;1:45-53.
16. Perlman M, Shah PS. Hypoxic-ischemic encephalopathy: challenges in outcome and prediction. *J Pediatr* 2011 February;158(2 Suppl):e51-e54.
17. Rennie JM, Hagmann CF, Robertson NJ. Outcome after intrapartum hypoxic ischaemia at term. *Semin Fetal Neonatal Med* 2007 October;12(5):398-407.
18. Wijlen-Hempel RHv, Malessy MJ, Hofstede-Buitenhuis SM, Nelissen RGHH, Campagne S, Pondaag W et al. The age of walking independently in children with Obstetric Brachial Plexus Lesion. Poster Presentation at the Annual Meeting of the European Academy of Childhood Disability, Groningen, The Netherlands, 2007. Poster Presentation at the

- Annual Meeting of the European Academy of Childhood Disability, Groningen, The Netherlands, 2007 2007.
19. WHO Motor Development Study: windows of achievement for six gross motor development milestones. *Acta Paediatr Suppl* 2006 April;450:86-95.
 20. Bouwstra H, Dijk-Stigter GR, Grooten HM, Janssen-Plas FE, Koopmans AJ, Mulder CD et al. Predictive value of definitely abnormal general movements in the general population. *Dev Med Child Neurol* 2010 May;52(5):456-61.
 21. Dibiasi J, Einspieler C. Load perturbation does not influence spontaneous movements in 3-month-old infants. *Early Hum Dev* 2004 April;77(1-2):37-46.
 22. Bayley N. Bayley Scales of Infant Development (BSID-II). Second Edition. ed. San Antonio, Texas: Hartcourt Brace & Company; 1993.
 23. Henderson SE, Sugden DA. Movement Assessment Battery for children. San Antonio, Texas: The Psychological Corporation; 1992.