



Universiteit
Leiden
The Netherlands

The challenge of quality assessment and regional perfusion to increase donor organ utilisation

Leemkolk, F.E.M. van de

Citation

Leemkolk, F. E. M. van de. (2024, May 15). *The challenge of quality assessment and regional perfusion to increase donor organ utilisation*. Retrieved from <https://hdl.handle.net/1887/3754038>

Version: Publisher's Version

License: [Licence agreement concerning inclusion of doctoral thesis in the Institutional Repository of the University of Leiden](#)

Downloaded from: <https://hdl.handle.net/1887/3754038>

Note: To cite this publication please use the final published version (if applicable).



Chapter 5

Quantification of unmethylated insulin DNA using methylation sensitive restriction enzyme digital PCR

Fenna E.M. van de Leemkolk, Rogier J. Nell, Mieke Versluis,
Eelco J.P. de Koning, Volkert A.L. Huurman, Ian P.J. Alwayn,
Rutger J. Ploeg, Pieter A. van der Velden, Marten A. Engelse

Abstract

Background

Assessment of specific β -cell death can be used to determine the quality and viability of pancreatic islets prior to transplantation and hence predict the suitability of the pancreas for isolation. Recently, several groups have demonstrated that unmethylated insulin (*INS*)-DNA is correlated to β -cell death in type 1 diabetes patients and during clinical islet isolation and subsequent transplantation.

Material & Methods

Here, we present a step-by-step protocol of our novel developed method for quantification of the relative amount of unmethylated *INS*-DNA using methylation sensitive restriction enzyme digital polymerase chain reaction (PCR).

Results

This method provides a novel and sensitive way to quantify the relative amount of β -cell derived unmethylated *INS*-DNA in cellular lysate.

Conclusions

We therefore suggest that this technique can be of value to reliably determine the purity of an islet preparation and may also serve as a measure of the quality of islets prior to transplantation measuring unmethylated *INS*-DNA as a reflection of the relative amount of lysed β -cells.

Introduction

β -cell replacement therapy has been established as a therapy for patients with complex Type 1 Diabetes (T1D) not amenable to optimal conventional diabetes management.¹ One example of β -cell replacement therapy is the transplantation of deceased donor derived pancreatic islets that has proven its long-term efficacy during the past 20 years.^{2,3} In order to aim for optimal posttransplant outcomes, the use of high-quality pancreatic islets is essential. Reliable assays are needed to assess the quality and viability of islets prior to transplantation. Soluble β -cell specific biomarkers may serve as a relevant diagnostic target to determine the quality and viability of islets at an early stage as they can be used to assess the amount of β -cell loss during islet isolation and subsequent transplantation.

Recently, several groups have reported unmethylated Insulin (*INS*)-DNA as a specific β -cell death marker during the early development of T1D. During the progression of the disease, autoimmune destruction of β -cells occurs and unmethylated *INS*-DNA is released in the bloodstream that can be identified.⁴⁻¹¹ As the concentration of this marker is extremely low, digital polymerase chain reaction (PCR) is often used to detect the amount of β -cell death in a quantitative manner. Recent studies using digital PCR to analyse unmethylated *INS*-DNA were based on a sodium-bisulfite conversion method that chemically converts unmethylated cytosine into uracil.^{6,8-10,12} However, this method comprises an insurmountable problem as regards heterogeneity since it depends on the completeness of the chemical conversion. Overshooting or incomplete bisulfite conversion can lead to reduced sensitivity and may hamper quantitative and qualitative interpretation.¹³

To avoid bisulfite conversion whilst still allowing the possibility to specifically quantify the methylation fraction of a specific allele, we recently published a methylation sensitive restriction enzyme (MSRE) digital PCR assay.¹⁴ MSREs are used to differentiate between methylated and unmethylated alleles and in combination with digital PCR it provides the opportunity to determine specific allele quantification.

Based on this methodology we now describe here the step-by-step approach how to quantify the unmethylated *INS*-DNA fraction using a MSRE and digital PCR assay. In this proof-of-concept study, we aim to demonstrate that this novel assay can be used as a helpful method to determine the purity of an islet preparation by measuring the amount of β -cells specific genomic DNA in an islet suspension. The subsequent step to then test this particular assay as a clinically quality marker of islets prior to transplantation by measuring the relative amount of lysed β -cells was beyond the scope of this proof-of-concept study.

Material & Methods

Sample collection and DNA isolation

Human insulinoma EndoC- β H1 cells (Univercell-Biosolutions¹⁵, Toulouse, France) and human monocytic THP-1 cells (Invivogen, Toulouse, France) were used as a positive and negative control, respectively. Isolated human pancreatic islets with different purities were obtained from seven individual pancreases (Leiden University Medical Center, the Netherlands). Human donor pancreases were used that were declined for clinical purposes according to national criteria. Written informed consent for research of pancreatic tissue from donors was present, according to local guidelines of the medical ethical committee (Leiden University Medical Center, the Netherlands) and of the Dutch Transplantation Foundation as the competent authority for organ donation in the Netherlands. Regarding the culture of the EndoC- β H1 and THP-1 cells and isolation and maintenance of human islets, please find further details in the *Supplemental document*.

1. Stored pellets of 2.5×10^6 EndoC- β H1 cells, 2.5×10^6 THP-1 cells and 10 μ L tissue of different purities from human islets were resuspended with phosphate buffer up to a final volume of 200 μ L.

From these samples genomic DNA was extracted using a QIAamp DNA Mini Kit (Qiagen, Venlo, the Netherlands) according to the manufacturer's instructions.

2. DNA concentrations were measured using NanoDropTM 1000 Spectrophotometer (Thermo Fisher Scientific, Landsmeer, the Netherlands).

Treatment with Methylation Sensitive Restriction Enzyme

The restriction enzyme, HpaII (Thermo Fisher Scientific), was used according to manufacturer's instructions. The restriction enzyme was added for the *INS target DNA* (**Figure 1a**) as it cleaves the unmethylated *INS*-DNA and leaves the methylated *INS*-DNA intact. Each sample was either left untreated or treated with HpaII.

1. Take two separate units of 100 ng genomic DNA from each sample and add each of these units to a separate PCR tube (8-strip PCR tubes). Mark the first strip as "with MSRE" and the second strip as "without MSRE". Include at least one sample in each strip containing only nuclease-free H₂O (negative control).

2. Add 2 units/reaction of HpaII, 1.0 μ L CutSmart Buffer (Bioké, Leiden, the Netherlands), and nuclease-free H₂O up to a total volume of 10 μ L to the strip marked as “with MSRE”.
3. Add 1.0 μ L CutSmart Buffer (Bioké, Leiden, the Netherlands), and nuclease-free H₂O up to a total volume of 10 μ L to the strip marked as “without MSRE”.
4. Incubate both strips at 37°C for one hour.

Duplex analysis using digital PCR

Primers and FAM-labelled hydrolysis probes (both Sigma-Aldrich) were designed to be (i) gene specific, (ii) to contain an MSRE specific CpG site and (iii) to possess optimal melting temperature (\pm 55°C) based on the region identified previously (**Supplementary Figure 1**).^{11,16} Probes directed to the *INS* target DNA were labelled with FAM (**Supplementary Table 1**). The probe directed to the reference TTC5 (tetra-tricopeptide repeat domain 5) gene was labelled with HEX (BioRad, Venendaal, the Netherlands).

1. To prepare the PCR mastermix, add 11 μ L per reaction of Droplet PCR SupermixTM (No dUTP) (BioRad) (e.g., 110 μ L per 10 samples), 0.5 μ L per reaction 36 μ M forward *INS* primer (e.g., 5 μ L per 10 samples), 0.5 μ L per reaction 36 μ M *INS* reverse primer (e.g., 5 μ L per 10 samples), 0.5 μ L per reaction 10 μ M *INS* FAM probe (e.g., 5 μ L per 10 samples), 1 μ L per reaction 20x TTC5 HEX assay (e.g., 10 μ L per 10 samples) and 6.5 μ L per reaction nuclease-free H₂O (e.g., 65 μ L per 10 samples).
2. In order to set up a PCR reaction in a 96-well plate, first, add 20 μ L mastermix to each well. Add 2 μ L of cleaved unmethylated *INS*-DNA (from the “with MSRE” PCR-strip) or uncleaved unmethylated *INS*-DNA (from the “without MSRE” PCR-strip) to each appropriate well. Mix wells by pipetting up-and-down several times.

All eight wells in a column must contain cleaved unmethylated *INS*-DNA (from the “with MSRE” PCR-strip) or uncleaved unmethylated *INS*-DNA (from the “without MSRE” PCR-strip).

3. Seal the 96-well PCR plate with foil and centrifuge shortly to remove liquid from the sides of the wells.

4. Digital PCR is performed using the digital droplet PCR (ddPCR) method described below (**Figure 1b**).

4.1 Use the Automated Droplet Generator (BioRad) to generate droplets according to manufacturer's instructions.

4.2 In order to prevent evaporation of the newly formed droplets, the droplets should be collected in a second 96-well PCR plate placed into a properly frozen cooling block.

4.3 When finished, remove the 96-well PCR plate including the newly formed droplets and use a Plate Sealer (BioRad) in order to cover the 96-well PCR plate with a heat-sealed foil.

NOTE: Careful handling is strongly advised as the newly formed droplets are fragile in this stage.

5. Perform a PCR reaction in a T100 Thermal Cycler (BioRad) using the following protocol:

- 10 min of activation at 95°C
- 30s at 94°C denaturation and 60s at 60°C for 40 cycles
- 10 min inactivation at 98°C
- Cooling at 12°C until droplet reading

6. Analyse the DNA content of the droplets using the QuantaSoft™ software with the QX200 Droplet Reader (BioRad) according to manufacturer's protocol.

7. Calculate for each sample the unmethylated *INS*-DNA fraction as follows:

- Unmethylation fraction = $1 - \frac{[INS]_{with\ MSRE}}{[TTCs]_{with\ MSRE}} * 100\%$

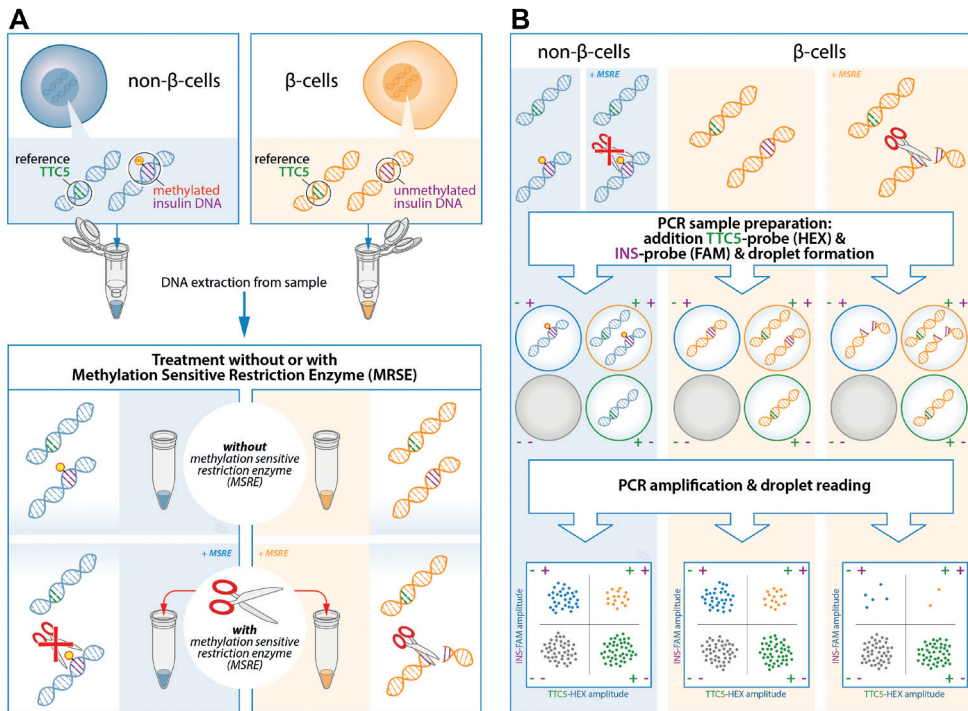


Figure 1. Experimental design of the quantification of unmethylated insulin (INS)-DNA using methylation sensitive restriction enzyme (MSRE) digital droplet polymerase chain reaction (ddPCR). (A) DNA is isolated from the samples and subsequently split in two and treated with or without the MSRE. The MSRE cleaves the unmethylated *INS*-DNA and leaves the methylated *INS*-DNA intact. (B) The DNA sample is partitioned into thousands of droplets followed by PCR amplification with FAM-labelled hydrolysis probes directed to the *INS target DNA* and probes directed to a reference gene (HEX-labelled). Droplet reading takes place after amplification. Droplets that are positive or negative for the *INS target DNA* and/or reference gene are counted to calculate the fraction of unmethylated *INS*-DNA in the sample.

Results

With attention to previous studies^{11,16} on target areas of DNA methylation in the human *INS* gene, we designed a methylation sensitive restriction enzyme (MSRE) duplex digital PCR assay to determine the relative amount of unmethylated *INS*-DNA fraction in our DNA samples of interest.

First, the assay was validated in cell line models. DNA was isolated from EndoC- β H1 cells, a cell line that was derived from human β -cells.¹⁷ The MSRE duplex digital PCR assay was performed. This results in two-dimensional plots that demonstrate four different clusters each of them representing different DNA containing droplets (**Figure 2**). The green cluster contains no *INS target DNA* but only TTC5 copies; the

blue cluster contains only *INS target DNA* but no *TTC5* copies; the orange cluster contains both *INS target DNA* and *TTC5* copies; the grey cluster includes the empty droplets. Without treatment of the MSRE (**Figure 2a**), the *INS target DNA* reflects the quantification of both unmethylated and methylated *INS target DNA*. After treatment with the MSRE HpaII (**Figure 2b**), the unmethylated *INS target DNA* is digested, resulting in less blue and orange droplets. For both, with and without treatment of MSRE, a stable independent reference, *TTC5*, was used to correct for input differences as it is not digested by the MSRE. When using both ratios from *INS target DNA* and reference *TTC5* in the samples with and without treatment with MSRE, an unmethylated *INS*-DNA fraction of 98.1% (95% CI 97.3-98.8) was determined (**Figure 2c**). With regards to DNA isolated from THP-1 cells, both ratios from *INS target DNA* and reference *TTC5*, when treated with (**Figure 2e**) or without (**Figure 2d**) the MSRE HpaII, were calculated and this resulted in an unmethylated *INS*-DNA fraction of 3.5% (95% CI -5.2 - 11.5) (**Figure 2f**).

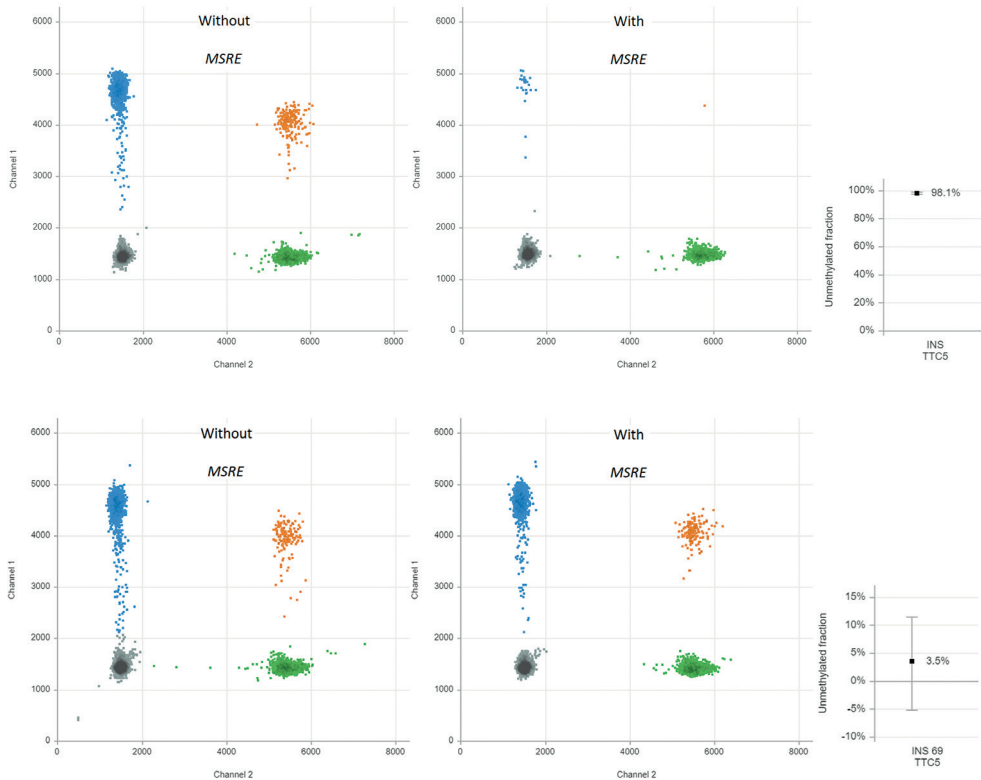


Figure 2. Validation in cell line models. Unmethylated *INS*-DNA fraction in EndoC-βH-1 cells (A-C) and THP-1 cells (D-F) as positive and negative control samples, respectively. The two-dimensional plots from the digital droplet polymerase chain reaction (ddPCR) demonstrate 4 different clusters each representing different DNA containing droplets:

Grey cluster: FAM- HEX-, containing no *INS target DNA* and no reference copies

Green cluster: FAM- HEX+, containing no *INS target DNA* but contains reference copies

Blue cluster: FAM+ HEX-, containing *INS target DNA* but no reference copies

Orange cluster: FAM+ HEX+ containing both *INS target DNA* and reference copies.

The control samples are both split in two and either treated with or without methylation sensitive restriction enzyme (MSRE). The unmethylated *INS*-DNA fraction is calculated:

$$1 - \frac{\frac{[INS]}{[TTCS]} \text{ with MSRE}}{\frac{[INS]}{[TTCS]} \text{ without MSRE}} * 100\%$$

As isolated DNA from EndoC-βH1 cells was essentially unmethylated for the *INS target DNA* whilst isolated DNA from THP-1 cells was mainly methylated for the *INS target DNA*, a 7-points standard curve was generated to technically validate the quantitative experimental setup. Isolated DNA from EndoC-βH1 cells diluted in the

background of isolated DNA from THP-1 cells resulted in a strong linear correlation ($r^2 = 0.9953$, $Y = 0.8862 * X + 7.019$, $p < 0.0001$) (**Figure 3**).

Next, the unmethylated *INS*-DNA fraction was determined in 24 human islets preparations which were isolated from seven different human donor pancreases obtained for research. For each sample, islet purity was determined, varying from <5 - 99%, via dithizone staining which is currently used by most centres to estimate the fraction of pancreatic islets in an isolated islet preparation.^{18,19} In the case of a sample with < 5% purity, the sample was categorised as islet depleted tissue (i.e., pancreatic tissue left over from islet isolation). After using this MSRE duplex digital PCR assay on DNA isolated from all the different purities of the islets, the unmethylated *INS*-DNA fraction was quantified (**Figure 4**). When comparing the purity of the pancreatic islets a significant linear correlation was observed ($R \text{ squared} = 0.8318$, $p < 0.0001$). In the samples containing islet depleted tissue an unmethylated *INS*-DNA fraction of 29.4 - 34.5% was observed.

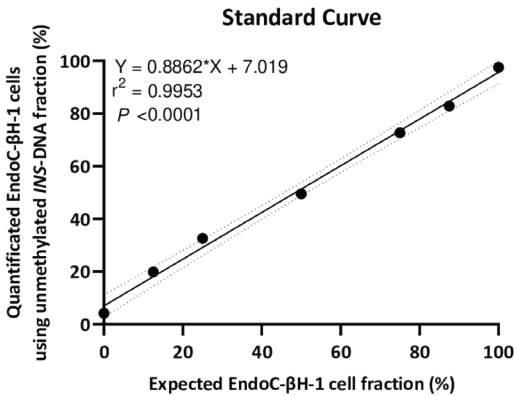


Figure 3. Standard curve. A seven point standard curve demonstrates the relation between input percentage of EndoC-βH-1 cells DNA (diluted in a background of THP-1 cells DNA) that could be expected and EndoC-βH-1 cells DNA quantified as unmethylated *INS*-DNA was measured using digital PCR. ($Y = 0.8862 * X + 7.019$, $r^2 = 0.9953$, $p < 0.0001$).

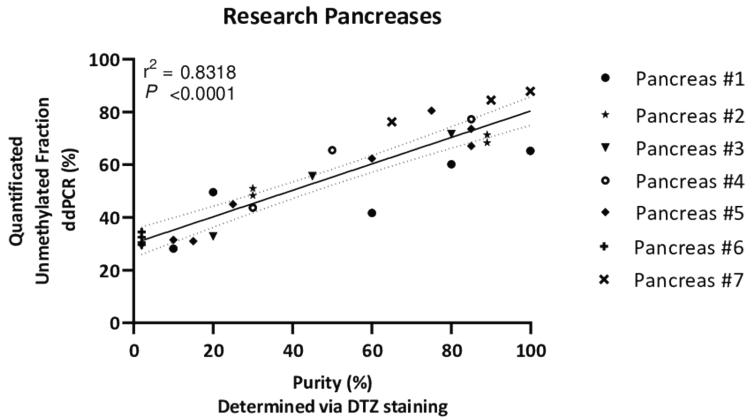


Figure 4. Unmethylated *INS*-DNA fraction quantified by digital PCR in different purities of islets, determined via DTZ staining, after isolation from seven donor research pancreases. ($r^2 = 0.8318$, $p < 0.0001$).

Discussion

Previous studies have demonstrated that the human *INS* gene is controlled epigenetically by methylation as it is unmethylated in β -cells and methylated in most other cell types.^{4,20-22} When cells are dying or lysed - either in vivo or for experimentation purposes - their genomic DNA is released into the milieu. This makes unmethylated-*INS* DNA a highly interesting marker to detect the death of β -cells. Several research groups have developed assays to measure the circulating fraction of unmethylated *INS*-DNA in humans, often aiming to be used in the context of early detection of β -cell death in type 1 Diabetes. In 2020 Speake et al.²³ assessed the performance of three different methodologies^{5,9,11} to quantify circulating levels of unmethylated *INS*-DNA in patients undergoing total pancreatectomy and subsequent islet auto-transplantation. This was considered a reliable model as damage or cell death of β -cells is known to occur during transplantation. Not only did the group measure a different CpG site or sites in the human *INS* gene in these three assays, they also applied different sample collection methods and measurement techniques (e.g., next generation sequencing or digital PCR). We agree with Speake's group that to further develop these assays, optimisation of the three different techniques might be beneficial. A similarity between all three assays was that DNA was treated with sodium bisulfite. This technique, which was first described by Frommer et al.²⁴, is still regarded as the gold standard to analyse DNA methylation. To prevent partial conversion and subsequent misinterpretation, the chemical conversion is performed at high concentrations. As a result, however,

fragmentation and degradation of DNA will occur that may lead to an incorrect quantitative interpretation.^{13,25} In addition, with regard to the bisulfite conversion kits used in these studies focusing on unmethylated-*INS* DNA, it remains a relatively time consuming technique e.g., as approximately 12 - 16 hours are needed for the incubation period.

To circumvent or even avoid these limitations, we report in this protocol a proof-of-concept study where we have combined the MSRE with digital PCR techniques to measure unmethylated-*INS* DNA. As an MSRE can differentiate between methylated and unmethylated alleles, MSRE treatment for only one hour results in digestion of unmethylated DNA, with the methylated DNA remaining intact. This allows for the rapid calculation of the fraction of unmethylated alleles in our target of interest (*INS target DNA*). When using two different cell lines, a strong correlation was observed (**Figure 3**) demonstrating a high sensitivity and specificity of this assay.

Next, we extended the use of this assay to measure the unmethylated *INS*-DNA fraction in different purities of islets obtained after pancreas isolation (**Figure 4**). Interestingly, the purity of the samples was not directly proportional to the quantified unmethylated *INS*-DNA fraction as was found in the standard curve obtained from the two cell lines (**Figure 3**). When using the MSRE duplex digital PCR in islet depleted tissue (i.e., containing < 5% islets) an unmethylated *INS*-DNA fraction of 29.4 - 34.5% was observed. Of note is that this observed fraction is likely not a limitation of the assay itself but an indication that the biological variability in methylation of the human *INS* gene promotor in non β -cells may play an important role. Our result is in line with the study by Kuroda et al.²² who investigated nine CpG sequences in the human *INS* gene promotor and compared the methylation pattern in this region in the 'islet cell fraction' and in the 'non-islet cell fraction'. In their study they demonstrated that the human *INS* gene promotor was mainly unmethylated in the islet cell fraction and predominantly methylated in the non-islet cell fraction (i.e., 13 of 15 clones (86%) in the non-islet cell fraction exhibited at least one unmethylated CpG out of the nine CpG sequences investigated).

With regard to the samples including high purity of islets, the quantified unmethylated *INS*-DNA fraction did not reach 100% which could be explained as the ratio of β -cells versus non- β -cells (e.g., alpha and delta) in human islets is generally assumed to be 50 - 70%.²⁶ This is in line with the \pm 70% unmethylated *INS*-DNA fraction we have found (**Figure 4**).

A limitation of this proof-of-concept study is that our protocol was performed in cell lines and in different purities of human islet preparations obtained after isolation.

Further validation experiments of this assay during islet isolation, islet culture and subsequent islet transplantation are necessary. During these next steps of the process an unknown amount of β -cell destruction occurs. To be able to specifically quantify the amount of β -cell loss using this promising assay could be helpful to differentiate between low or high quality and viability of islet preparations.^{12,27} In clinical islet transplantation the accurate determination of the number of (viable) β -cells in a pancreatic islet preparation is essential. Not only assessment of the islet depleted tissue fraction, but more important the total number of isolated islets in the preparation is key for a successful transplant.²⁸ In islet transplantation, the islet yield has previously been determined using various methods such as size-dependent islet counting by visualizing islets under a microscope and subsequent measurement of their volume¹⁹, calculating both islet purity and graft volume or specific β -cell counting.²⁸⁻³¹ To date, in most centres the estimation of the fraction of pancreatic islets in an isolated islet preparation is based on a method that uses dithizone staining (DTZ).^{18,19} Dithizone is a zinc chelating agent that, when added to an islet prep, results in a rapidly and reversibly red staining of islets which can therefore be distinguished from exocrine tissue. Importantly, this method cannot be used to determine the total number of β -cells in an isolated islet preparation. In addition, in case of β -cell degranulation, the red staining will not take place. Therefore, due to the human error that is intrinsic to this subjective method, an over- or under-estimation of the islet equivalent (IEQ) may easily occur. As such, determination of IEQ by eye or by digital image analysis has proven difficult within and between different centres.³²

Based on these notions, we suggest in this preliminary study that our newly developed MSRE duplex digital PCR assay using unmethylated *INS*-DNA may be a fast and easy method to specifically quantify β -cells. As shown previously, the combination of MSRE with digital PCR provides both specificity and sensitivity by quantitative assessment of target alleles.¹⁴ By measuring the concentration of the targeted unmethylated *INS*-DNA and therefore the number of lysed β -cells, this combined technique may be a promising tool to determine the fraction of β -cells immediately after islet isolation, during culture and immediately prior to islet transplantation. Pending further validation trials, the MSRE duplex digital PCR assay using unmethylated *INS*-DNA may therefore help decision making on islet quality (through the measurement of β -cell death) and islet quantity in islet transplantation centres.

Acknowledgements

We would like to thank our colleagues from the islet lab, for their help in islet isolation and providing sample collection and our colleagues from the digital droplet PCR

group, for their expertise regarding digital droplet PCR and helpful discussions. We also would like to thank M.S. Zuurmond for the graphic design of Figure 1.

Supplementary Information

Methods

Culture of human insulinoma EndoC- β H1 cells (Univercell- Biosolutions¹⁵, Toulouse, France), human monocytic leukaemia THP-1 cells and isolation and culture of human islets

2.1 EndoC-H1 cells

Human insulinoma EndoC- β H1 cells were cultured in low glucose (1 g/L) DMEM + Glutamax (Gibco, Breda, the Netherlands) supplemented with 2% (200 g/L) Albumin (Sanquin Bloodbank, Leiden, the Netherlands), 10 mM (300 mg/mL) Nicotinamide (prepared by our institute's pharmacy), 55 μ L Transferrin (100 mg) and 6.7 μ L Selenite (0.5 mg/mL) (both Sigma-Aldrich, Darmstadt, Germany).

2.2 THP-1 cells

Human monocytic THP-1 cells were cultured in RPMI 1640 (Gibco) with 2 mM L-glutamine (Gibco) and 25 mM HEPES (Gibco) supplemented with 10% heat-inactivated fetal bovine serum (Biowest, Nuaille, France) at 37 degree maintaining 5% CO₂.

2.3 Human islets

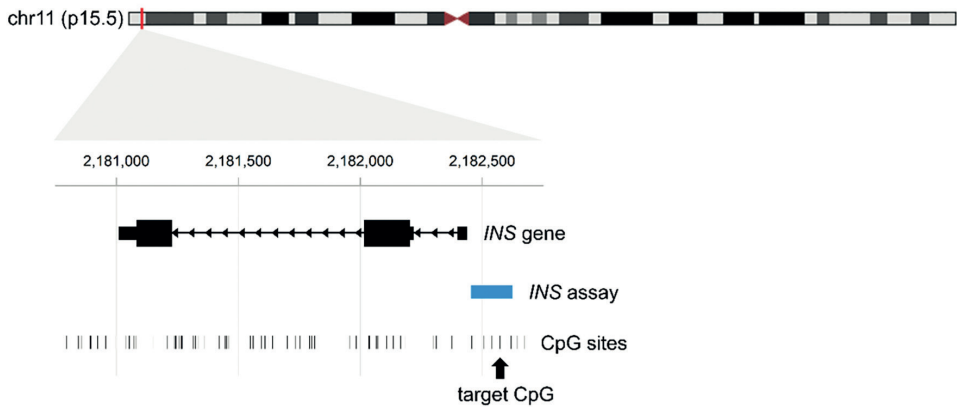
NOTE: Human donor pancreases were used that could not be used for clinical purposes according to national criteria. Written research consent from donors for research use of pancreatic tissue was obtained.

Human islets were isolated from seven donor pancreases in our institute according to the modified Ricordi method as previously described.^{19,33}

Volume and purity were determined by dithizone staining.^{18,34} Islet depleted tissue contained < 5% islets.

Human islets were cultured in CMRL 1066 medium (Corning-Mediatech, Herndon, VA, USA) supplemented with 2 mg/mL Ciproxin (Bayer healthcare AG, Leverkusen, Germany), 50 mg/mL gentamycin (Gibco), 200 mM L-Glutamine (Gibco), 1M HEPES (Gibco), 300 mg/mL Nicotinamide (prepared by our institute's pharmacy),

and Human Serum (Sanquin Bloodbank) at 37 degree for 1 to 4 days. Culture media was changed every two days.



Supplementary Figure 1. Schematic depiction of the *INS* target DNA assay.

Supplementary Table 1. Details primer, probe and methylation sensitive restriction enzyme information for digital polymerase chain reaction.

Assay <i>INS</i> chr. 11 (Sigma-Aldrich)	
Context Sequence	GCTGACGACC AAGGAGATCT TCCCACAGAC CCAGCACCAG GGAAATGGTC_CGGAAATTGC AGCCTCAGCC CCCAGCCATC TGCCGACCCC CCCACCCAG GCCCTAATGG GCCAGGCGGC AGGGGTTGAG AGGTAGGGGA GATGGGCTCT GAGACTATAA AGCCAGCGGG
Forward primer	5' GCTGACGACCAAGGAGATC 3'
Reverse primer	5' CCCGCTGGCTTTATAGTCTCAG 3'
Probe	5' TCCCACAGACCCAGCACCAG 3'
Location	chr11: 2182455-2182624
Amplicon length	170 bp
Label	FAM
MSRE (HpaII)	Cut site C C G G
Assay <i>TTC5</i> reference chr. 14q (BioRad)	
Context Sequence	TGGTCGCGAT GCCACTGTGG CAACAGCCTG GCTGCTGGAT CCCTGAGGCT TCCCATTAC CACTAGCAGG AGGGGCGTCT CCACTCGAAC ACTGGAAAAG GAATAGTCCT AGAAAAGACA GAC
Location (hg19)	chr14:20757798-20757920
Amplicon length	59 nucleotide
Label	HEX

References

1. Shapiro AM, Pokrywczynska M, Ricordi C. Clinical pancreatic islet transplantation. *Nat Rev Endocrinol*. May 2017;13(5):268-277. doi:10.1038/nrendo.2016.178
2. Farney AC, Sutherland DE, Opara EC. Evolution of Islet Transplantation for the Last 30 Years. *Pancreas*. Jan 2016;45(1):8-20. doi:10.1097/mpa.0000000000000391
3. Vantyghem MC, de Koning EJP, Pattou F, Rickels MR. Advances in beta-cell replacement therapy for the treatment of type 1 diabetes. *Lancet*. Oct 5 2019;394(10205):1274-1285.
4. Akirav EM, Lebastchi J, Galvan EM, et al. Detection of beta cell death in diabetes using differentially methylated circulating DNA. *Proceedings of the National Academy of Sciences of the United States of America*. Nov 22 2011;108(47):19018-23. doi:10.1073/pnas.1111008108
5. Lehmann-Werman R, Neiman D, Zemmour H, et al. Identification of tissue-specific cell death using methylation patterns of circulating DNA. *Proceedings of the National Academy of Sciences of the United States of America*. Mar 29 2016;113(13):E1826-34. doi:10.1073/pnas.1519286113
6. Tersey SA, Nelson JB, Fisher MM, Mirmira RG. Measurement of Differentially Methylated INS DNA Species in Human Serum Samples as a Biomarker of Islet beta Cell Death. *Journal of visualized experiments : JoVE*. Dec 21 2016;(118)doi:10.3791/54838
7. Zhang K, Lin G, Han Y, Xie J, Li J. Circulating unmethylated insulin DNA as a potential non-invasive biomarker of beta cell death in type 1 Diabetes: a review and future prospect. *Clinical epigenetics*. 2017;9:44. doi:10.1186/s13148-017-0343-5
8. Usmani-Brown S, Lebastchi J, Steck AK, Beam C, Herold KC, Ledizet M. Analysis of beta-cell death in type 1 diabetes by droplet digital PCR. *Endocrinology*. Sep 2014;155(9):3694-8. doi:10.1210/en.2014-1150
9. Herold KC, Usmani-Brown S, Ghazi T, et al. beta cell death and dysfunction during type 1 diabetes development in at-risk individuals. *The Journal of clinical investigation*. Mar 2 2015;125(3):1163-73. doi:10.1172/JCI78142
10. Simmons KM, Fouts A, Pyle L, et al. Unmethylated Insulin as an Adjunctive Marker of Beta Cell Death and Progression to Type 1 Diabetes in Participants at Risk for Diabetes. *Int J Mol Sci*. Aug 8 2019;20(16)
11. Fisher MM, Watkins RA, Blum J, et al. Elevations in Circulating Methylated and Unmethylated Preproinsulin DNA in New-Onset Type 1 Diabetes. *Diabetes*. Nov 2015;64(11):3867-72. doi:10.2337/db15-0430
12. Bellin MD, Clark P, Usmani-Brown S, et al. Unmethylated Insulin DNA Is Elevated After Total Pancreatectomy With Islet Autotransplantation: Assessment of a Novel Beta Cell Marker. *American journal of transplantation : official journal of the American Society of Transplantation and the American Society of Transplant Surgeons*. Apr 2017;17(4):1112-1118. doi:10.1111/ajt.14054
13. Warnecke PM, Stirzaker C, Melki JR, Millar DS, Paul CL, Clark SJ. Detection and measurement of PCR bias in quantitative methylation analysis of bisulphite-treated DNA. *Nucleic Acids Res*. Nov 1 1997;25(21):4422-6.
14. Nell RJ, van Steenderen D, Menger NV, Weitering TJ, Versluis M, van der Velden PA. Quantification of DNA methylation independent of sodium bisulfite conversion using methylation-sensitive restriction enzymes and digital PCR. *Hum Mutat*. Dec 2020;41(12):2205-2216. doi:10.1002/humu.24111
15. Ravassard P, Hazhouz Y, Pechberty S, et al. A genetically engineered human pancreatic beta cell line exhibiting glucose-inducible insulin secretion. *The Journal of clinical investigation*. Sep 2011;121(9):3589-97. doi:10.1172/JCI58447

16. Yang BT, Dayeh TA, Kirkpatrick CL, et al. Insulin promoter DNA methylation correlates negatively with insulin gene expression and positively with HbA(1c) levels in human pancreatic islets. *Diabetologia*. Feb 2011;54(2):360-7. doi:10.1007/s00125-010-1967-6
17. Tsonkova VG, Sand FW, Wolf XA, et al. The EndoC-βH1 cell line is a valid model of human beta cells and applicable for screenings to identify novel drug target candidates. *Mol Metab*. Feb 2018;8:144-157. doi:10.1016/j.molmet.2017.12.007
18. Latif ZAN, J.; Alejandro, R. A simple method of staining fresh and cultured islets. *Transplantation*. 1988;45(4):827-829.
19. Ricordi C, Lacy PE, Finke EH, Olack BJ, Scharp DW. Automated method for isolation of human pancreatic islets. *Diabetes*. Apr 1988;37(4):413-20. doi:10.2337/diab.37.4.413
20. Cate RL, Chick W, Gilbert W. Comparison of the methylation patterns of the two rat insulin genes. *J Biol Chem*. May 25 1983;258(10):6645-52.
21. Husseiny MI, Kaye A, Zebadua E, Kandeel F, Ferreri K. Tissue-specific methylation of human insulin gene and PCR assay for monitoring beta cell death. *PLoS one*. 2014;9(4):e94591. doi:10.1371/journal.pone.0094591
22. Kuroda A, Rauch TA, Todorov I, et al. Insulin gene expression is regulated by DNA methylation. *PLoS one*. Sep 9 2009;4(9):e6953. doi:10.1371/journal.pone.0006953
23. Speake C, Ylescupidez A, Neiman D, et al. Circulating Unmethylated Insulin DNA As a Biomarker of Human Beta Cell Death: A Multi-laboratory Assay Comparison. *J Clin Endocrinol Metab*. Mar 1 2020;105(3)doi:10.1210/clinem/dgaa008
24. Frommer M, McDonald LE, Millar DS, et al. A genomic sequencing protocol that yields a positive display of 5-methylcytosine residues in individual DNA strands. *Proceedings of the National Academy of Sciences of the United States of America*. Mar 1 1992;89(5):1827-31. doi:10.1073/pnas.89.5.1827
25. Tanaka K, Okamoto A. Degradation of DNA by bisulfite treatment. *Bioorg Med Chem Lett*. Apr 1 2007;17(7):1912-5. doi:10.1016/j.bmcl.2007.01.040
26. Dolenšek J, Rupnik MS, Stožer A. Structural similarities and differences between the human and the mouse pancreas. *Islets*. 2015;7(1):e1024405. doi:10.1080/19382014.2015.1024405
27. Bellin MD, Abu-El-Haija M, Morgan K, et al. A multicenter study of total pancreatectomy with islet autotransplantation (TPIAT): POST (Prospective Observational Study of TPIAT). *Pancreatology : official journal of the International Association of Pancreatology (IAP) [et al]*. Apr 2018;18(3):286-290. doi:10.1016/j.pan.2018.02.001
28. Papas KK, Colton CK, Qipo A, et al. Prediction of marginal mass required for successful islet transplantation. *J Invest Surg*. Feb 2010;23(1):28-34. doi:10.3109/08941930903410825
29. Pisanía A, Weir GC, O'Neil JJ, et al. Quantitative analysis of cell composition and purity of human pancreatic islet preparations. *Lab Invest*. Nov 2010;90(11):1661-75. doi:10.1038/labinvest.2010.124
30. Lehmann R, Fernandez LA, Bottino R, et al. Evaluation of islet isolation by a new automated method (Coulter Multisizer IIe) and manual counting. *Transplant Proc*. Mar 1998;30(2):373-4. doi:10.1016/s0041-1345(97)01314-6
31. Huang HH, Harrington S, Stehno-Bittel L. The Flaws and Future of Islet Volume Measurements. *Cell Transplant*. Jul 2018;27(7):1017-1026. doi:10.1177/0963689718779898
32. Kissler HJ, Niland JC, Olack B, et al. Validation of methodologies for quantifying isolated human islets: an Islet Cell Resources study. *Clinical transplantation*. Mar-Apr 2010;24(2):236-42. doi:10.1111/j.1399-0012.2009.01052.x
33. Nijhoff MF, Engelse MA, Dubbeld J, et al. Glycemic Stability Through Islet-After-Kidney Transplantation Using an Alemtuzumab-Based Induction Regimen and Long-Term Triple-Main-

- tenance Immunosuppression. *American journal of transplantation : official journal of the American Society of Transplantation and the American Society of Transplant Surgeons*. Jan 2016;16(1):246-53. doi:10.1111/ajt.13425
34. Hansen WA, Christie MR, Kahn R, et al. Supravital dithizone staining in the isolation of human and rat pancreatic islets. *Diabetes Res*. Feb 1989;10(2):53-7.

