



Universiteit
Leiden
The Netherlands

Association between thrombus composition and stroke etiology in the MR CLEAN Registry biobank

Hund, H.M.; Boodt, N.; Hansen, D.; Haffmans, W.A.; Nijeholt, G.J.L.A.; Hofmeijer, J.; ... ; Beusekom, H.M.M. van

Citation

Hund, H. M., Boodt, N., Hansen, D., Haffmans, W. A., Nijeholt, G. J. L. A., Hofmeijer, J., ... Beusekom, H. M. M. van. (2023). Association between thrombus composition and stroke etiology in the MR CLEAN Registry biobank. *Neuroradiology*, 65(5), 933-943.
doi:10.1007/s00234-023-03115-y

Version: Publisher's Version

License: [Creative Commons CC BY 4.0 license](https://creativecommons.org/licenses/by/4.0/)

Downloaded from: <https://hdl.handle.net/1887/3722033>

Note: To cite this publication please use the final published version (if applicable).



Association between thrombus composition and stroke etiology in the MR CLEAN Registry biobank

Hajo M. Hund^{1,2} · Nikki Boodt^{3,4} · Daniel Hansen¹ · Willem A. Haffmans¹ · Geert J. Lycklama à Nijeholt² · Jeannette Hofmeijer^{5,6} · Diederik W. J. Dippel⁴ · Aad van der Lugt³ · Adriaan C. G. M. van Es³ · Heleen M. M. van Beusekom¹ · on behalf of the MR CLEAN Registry Investigators

Received: 26 August 2022 / Accepted: 6 January 2023 / Published online: 25 January 2023
© The Author(s) 2023

Abstract

Purpose The composition of thrombi retrieved during endovascular thrombectomy (EVT) in acute ischemic stroke (AIS) due to large vessel occlusion (LVO) may differ depending on their origin. In this study, we investigated the association between thrombus composition and stroke etiology in a large population of patients from the Dutch MR CLEAN Registry treated with EVT in daily clinical practice.

Methods The thrombi of 332 patients with AIS were histologically analyzed for red blood cells (RBC), fibrin/platelets (F/P), and white blood cells (leukocytes) using a machine learning algorithm. Stroke etiology was assessed using the Trial of Org 10,172 in acute stroke treatment (TOAST) classification.

Results The thrombi of cardioembolic origin contained less RBC and more F/P than those of non-cardioembolic origin (25.8% vs 41.2% RBC [$p=0.003$] and 67.1% vs 54.5% F/P [$p=0.004$]). The likelihood of a non-cardioembolic source of stroke increased with increasing thrombus RBC content (OR 1.02; [95% CI 1.00–1.06] for each percent increase) and decreased with a higher F/P content (OR 1.02; [95% CI 1.00–1.06]). Thrombus composition in patients with a cardioembolic origin and undetermined origin was similar.

Conclusion Thrombus composition is significantly associated with stroke etiology, with an increase in RBC and a decrease in F/P raising the odds for a non-cardioembolic cause. No difference between composition of cardioembolic thrombi and of undetermined origin was seen. This emphasizes the need for more extensive monitoring for arrhythmias and/or extended cardiac analysis in case of an undetermined origin.

Keywords Ischemic stroke · Mechanical thrombectomy · Stent-retriever · Endovascular treatment · Thrombus · Microscopy

HMH and NB contributed equally to this work.

✉ Heleen M. M. van Beusekom
h.vanbeusekom@erasmusmc.nl

¹ Department of Cardiology, Erasmus MC University Medical Center, Room EE23.93, PO 2040, 3000CA Rotterdam, The Netherlands

² Department of Radiology, Haaglanden Medical Centrum, The Hague, The Netherlands

³ Department of Radiology and Nuclear Medicine, Erasmus MC University Medical Center, Rotterdam, The Netherlands

⁴ Department of Neurology, Erasmus MC University Medical Center, Rotterdam, The Netherlands

⁵ Department of Neurology, Rijnstate Hospital, Arnhem, The Netherlands

⁶ Department of Clinical Neurophysiology, University of Twente, Enschede, The Netherlands

Introduction

With the emergence of endovascular thrombectomy (EVT) as part of standard treatment for acute ischemic stroke (AIS) caused by a large vessel occlusion (LVO), occluding thrombo-emboli have become available for histopathologic analysis. Insight in the relationship between thrombus composition and stroke etiology could be of value for secondary stroke prevention, as the appropriate preventive treatment depends on stroke etiology. Several causes of AIS have been identified, and the most prevalent being large artery atherosclerosis and cardiac embolism; both of which may lead to thrombo-embolic occlusions in the intracranial circulation. Stroke etiology currently remains unknown in approximately 30–50% of patients despite extensive clinical workup [1]. If a clear association exists between thrombus composition and

stroke etiology, examination of extracted thrombi could be useful to guide therapeutic choices for secondary prevention of recurrent stroke [2].

Various previous studies have studied the relationship between thrombus composition and stroke etiology [3–21]. Most studies so far, however, did not find an association, possibly due to small sample sizes [3, 5, 6, 8, 11–15, 17]. While several studies did find an association between thrombus composition and etiology, they yielded contradictory results: some reported a higher amount of red blood cells (RBC) in thrombi associated with large artery atherosclerosis than in thrombi of cardiac or unknown origin [9, 10, 16, 18, 20, 21], while others reported the opposite with a higher amount of RBC in thrombi related to a cardiac source of embolization [7, 19, 22].

The aim of this study was to assess the relationship between thrombus composition and stroke etiology in a large population of AIS patients, treated with EVT for a large vessel occlusion of the anterior circulation, in daily clinical practice. In contrast to previous studies, we were able to compare clinical baseline characteristics of patients with and without thrombi available for analysis.

Patients and methods

Study population and sample selection

The MR CLEAN (Multicenter Randomized Clinical Trial of Endovascular Treatment for Acute Ischemic Stroke in the Netherlands) Registry was a prospective observational study of all patients who underwent EVT for AIS in the Netherlands (Appendix) [23]. Enrolment started March 2014, directly after the final inclusion in the MR CLEAN trial [24]. All patients undergoing EVT for AIS in the anterior or posterior circulation (defined as at least entry into the angiography suite and receiving arterial puncture), in one of the sixteen centers performing EVT in the Netherlands, were registered. The central medical ethics committee evaluated the study protocol and granted permission to carry out the study as a registry. For this histopathologic substudy, patients who met the following criteria were included: age 18 years and older, a proximal intracranial vessel occlusion in the anterior circulation as shown on CT angiography (CTA), availability of clinical and imaging data for the assessment of stroke etiology, and available thrombus for histological assessment. Data of patients treated until 15 June 2016 were collected and analyzed for this study.

Thrombus analysis

After EVT, the thrombi were immediately stored in 4% buffered formaldehyde before embedding in paraffin. The

thrombi were mostly retrieved by mechanical thrombectomy using a stent retriever, with only 14.8% using aspiration thrombectomy. For each paraffin block, 5- μ m sections were cut at two depths, generally at a depth of 170 and 230 μ m (Microm HM335 S, Microm International GmbH, Waldorf, Germany), as it has been shown that partial sectioning of the thrombus provides a good estimate of thrombus composition [25]. The two sections at these depths were collected on a single slide, stained by hematoxylin–eosin (HE), digitized at 20 \times magnification (228 nm/pixel, Hamamatsu Nano-Zoomer, Hamamatsu Photonics K.K., Hamamatsu City, Japan), and images were stored as raw Hamamatsu.ndpi datafiles.

An analysis of stained sections was performed using Orbit Image Analysis software (Orbit Image Analysis, Idorsia Ltd.) [26]. Orbit enables the analysis of native Hamamatsu.ndpi files and utilizes machine learning algorithms for image segmentation, classification, and quantification. First, a unified foreground/background segmentation model was trained to exclude background from further analysis. Using one unified classification model for all thrombi yielded less classification accuracy due to slight differences in staining between samples; therefore, separate classification models were created for each slide containing two sections. All models were trained to quantify percentages of red blood cells (RBC), fibrin and platelets (F/P), and white blood cells (leukocytes), as the main components of extracted EVT thrombi [3, 5–19, 22]. The weighted average of the two sections was considered representative for the whole thrombus [25]. Orbit was then used in conjunction with a custom script to enable batch analysis of all sections with individual classification models applied for each slide, generating both a Jason data file containing the quantification results per sample and a classification overlay image per sample (Fig. 1) to allow for visual inspection of the classification accuracy. Thrombus sections with large central defects in RBC rich sample regions, generally difficult to cut, were corrected by manually outlining and measuring these defects and adding the missing RBC surface area after comparison with the other section, and the original paraffin blocks (biomedical scientist (HH), validated by a pathobiologist (HB)).

Assessment of stroke etiology

All patients underwent CTA or magnetic resonance angiography (MRA) of the cervical arteries before EVT. Furthermore, 12-lead ECG followed by ECG-monitoring for at least 24 h was performed. Additional etiologic workup was performed in accordance with local protocols. Stroke etiology was determined based on data provided in the discharge letters and imaging by two trained observers who were blinded for histological thrombus composition. The presumed cause of stroke was determined for each patient

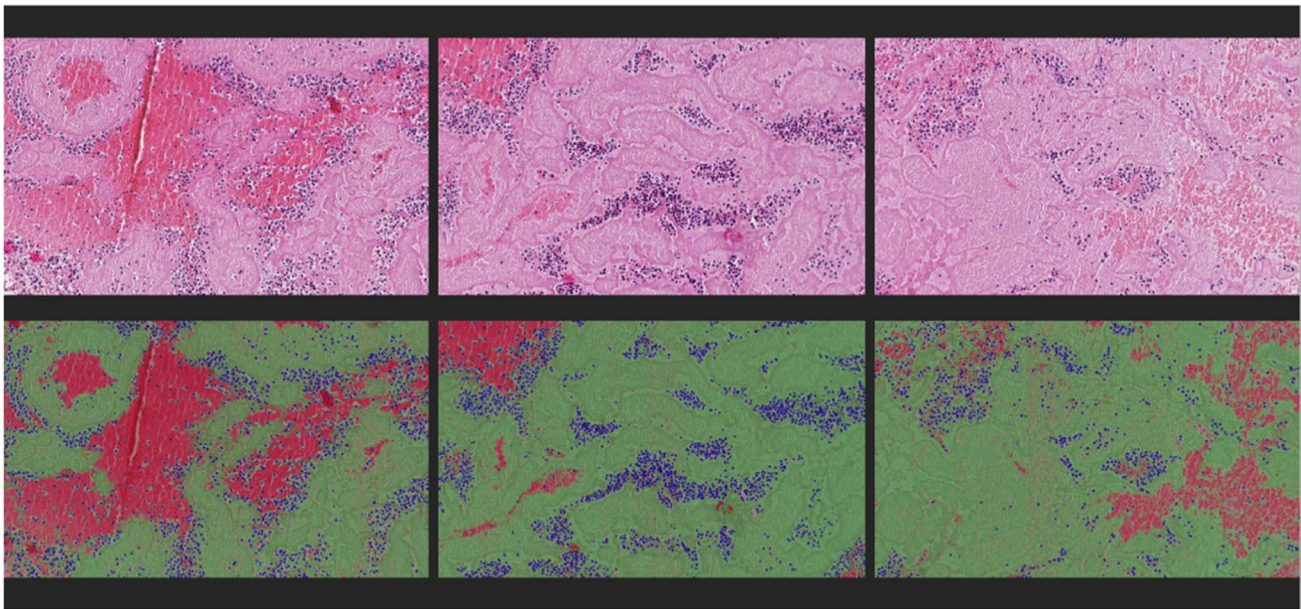


Fig. 1 Examples of generated classification overlay images into RBC (red), F/P (green), and leukocytes (blue) to allow for visual inspection of the classification accuracy using Orbit. The top three images

are original HE stained images; the bottom three images are the semi-automatically segmented images

using the TOAST criteria as a guideline: large artery atherosclerosis (TOAST 1), cardioembolism (TOAST 2), stroke of other determined cause (TOAST 4), and stroke of undetermined cause (TOAST 5). In our cohort of patients who underwent EVT for AIS, there were no patients with small vessel disease as cause of stroke (TOAST 3). A patient was considered to have large artery atherosclerotic stroke, if there was > 50% atherosclerotic stenosis or atherosclerotic occlusion at the bifurcation of the carotid artery on the symptomatic side. Patients were considered to have undetermined stroke etiology, if more than one possible cause was identified; if no cause was identified despite complete workup, as described above; or if diagnostic workup was incomplete.

For statistical analysis, each patient was allocated to one of three predefined etiologic categories: (a) “non-cardioembolic” for both large artery atherosclerotic disease and other determined causes (TOAST 1 and 4), (b) “cardioembolic” (TOAST 2), or (c) “undetermined” (TOAST 5). For graphical representation of thrombus composition within groups, we further subdivided cardioembolic stroke into medium-risk or high-risk based on the evidence of the relative propensity for embolization, according to the original TOAST classification [27]. We also subdivided non-cardioembolic into large artery atherosclerosis, carotid artery dissection, and other determined cause. Stroke of undetermined etiology was subdivided in “> 1 cause” (more than one possible cause was identified) and “cryptogenic” (no cause was identified despite complete workup, as described).

Statistical analysis

Clinical characteristics and histological thrombus composition were described using standard statistics. Since thrombus composition did not follow a normal distribution, a Kruskal–Wallis test was performed first to assess differences in thrombus composition between all three etiologic groups (cardioembolic, non-cardioembolic, and undetermined). The association of histological components (percentages of RBC, F/P, and leukocytes) with stroke etiology (non-cardioembolic stroke, cardioembolic stroke, and stroke with undetermined etiology) was estimated with univariable and multivariable multinomial logistic regression and presented as (adjusted) odds ratios (*aOR*) with 95% confidence intervals (*CI*), with cardioembolic stroke as the reference category. We adjusted for potentially relevant differences in baseline characteristics by performing Kruskal–Wallis, χ^2 test and Fisher–Freeman–Halton tests and including characteristics with a *p*-value of < 0.20 in the multivariable models (supplemental Table S1). For the regression analyses, single imputation was performed for missing values (supplemental Table S2). To assess the representativeness of the patients with an available thrombus to all patients who underwent EVT in clinical practice, we compared patient, clinical, and imaging characteristics of the included patients from the MRCLEAN Registry to those who were not included using ANOVA and Mann–Whitney *U* tests. Statistical analyses were performed using Stata (StataCorp. 2017. Stata Statistical Software: Release 15.1 SE. College Station, TX:

StataCorp LLC) and SPSS (IBM Corp. Released 2020. IBM SPSS Statistics for Windows, Version 27.0. Armonk, NY: IBM Corp).

Results

Patient population

Thrombus samples of 332 patients from the MR CLEAN Registry were included for histological analysis in this study (Fig. S1). Baseline characteristics of these patients did not differ with those not included from the registry. Importantly, there were also no statistically significant differences in stroke etiology. For included patients, stroke etiology was categorized as cardioembolic in 114 patients (34.3%), non-cardioembolic in 58 patients (17.5%), and undetermined in 160 patients (48.2%), compared to 364 (30.5%), 199 (16.7%), and 631 (52.8%), respectively, in patients from the registry who were not included for histological analysis (Table 1).

Differences in thrombus histology between etiologic groups

Histopathologic evaluation showed the thrombi typically contained areas being predominantly RBC, F/P, or leukocyte rich (Fig. 2). A large heterogeneity in overall composition was seen in our cohort (supplemental Fig. S2). For all thrombi, median RBC content was 27.1% (*IQR* 15.9–42.4), median F/P content was 67.0% (*IQR* 53.1–78.1) and median leukocyte content was 4.8% (*IQR* 3.0–7.1). RBC content in thrombi from patients with non-cardioembolic etiology (median 41.2%, *IQR* 20.5–53.0), was higher than in thrombi from patients with a cardiac etiology (median 25.8%, *IQR* 13.8–38.2) and thrombi from patients with an undetermined origin (median 25.4%, *IQR* 14.3–39.0). Inversely, the F/P content in thrombi from patients with non-cardioembolic etiology (median 54.5%, *IQR* 55.1–80.3) was lower than in thrombi from patients with cardioembolic etiology (median 67.1%, *IQR* 55.1–80.3) and thrombi with an undetermined origin (median 70.0%, *IQR* 57.1–78.2). Using a Kruskal–Wallis test for group differences, a significant difference was seen between the three etiologic groups for RBC content ($p < 0.001$) and F/P content ($p = 0.002$), but not for leukocyte content ($p = 0.24$) (Table 2 and Fig. 3). These differences were more pronounced for high-risk cardioembolic etiologies (supplemental Fig. S3). After correction for baseline differences in the regression analysis, RBC and F/P significantly differed between non-cardioembolic and cardioembolic strokes. Increased RBC (*OR*, 1.02 [95% *CI* 1.01–1.05]) and decreased F/P (*OR*, 0.98 [95% *CI* 0.95–0.99]) were associated with non-cardioembolic stroke,

Table 1 Baseline characteristics for patients from the MR CLEAN cohort with histological analysis as compared to those without. ANOVA was performed; p -values > 0.05 are printed bold

	Histology $n = 332$, (%)	No histology $n = 1194$, (%)	p -value
Age (median)	70	71	0.690 ^a
Sex (male)	177 (53.3%)	632 (52.9%)	0.902
NIHSS baseline (median)	17	15	0.00 ^a
IVT	251 (75.6%)	919 (77.2%)	0.551
Atrial fibrillation	92 (27.9%)	243 (20.7%)	0.006
Peripheral arterial disease	43 (13.3%)	95 (8.1%)	0.004
Previous stroke	66 (19.9%)	187 (15.8%)	0.072
Myocardial infarction	55 (16.8%)	178 (15.2%)	0.486
Antiplatelet use	105 (32.2%)	401 (34%)	0.555
Coumarin use	54 (16.5%)	140 (11.8%)	0.025
NOAC use	11 (3.4%)	26 (2.2%)	0.228
Occlusion segment based on CTA			
Intracranial ICA	12 (3.8%)	73 (6.5%)	0.072
ICA-T	90 (28.3%)	232 (20.5%)	0.003
M1	190 (59.7%)	652 (57.6%)	0.502
M2	25 (7.9%)	156 (13.8%)	0.005
Other: M3/ anterior	1 (0.3%)	18 (1.6%)	0.077
Etiology (TOAST)			
Cardioembolic	114 (34.3%)	364 (30.5%)	0.181
Non-cardioembolic	58 (17.5%)	199 (16.7%)	0.729
Undetermined	160 (48.2%)	631 (52.8%)	0.133

^aMann-Whitney U test

as opposed to cardioembolic stroke (Table 3). In other words, for every 1% increase in RBC content, the *OR* for a non-cardioembolic stroke (as opposed to cardioembolic stroke) was 1.02 (Fig. 4). Leukocyte content did not differ between non-cardioembolic and cardioembolic stroke. Furthermore, we did not observe any differences in thrombus composition between strokes with undetermined etiology and cardioembolic strokes in the univariable regression analyses (*OR* 1.00 [95% *CI* 0.99–1.01] for RBC, *OR* 1.00 [95% *CI* 0.99–1.01] for F/P and *OR* 1.00 [95% *CI* 0.94–1.07] for leukocytes) and multivariable regression analyses (Table 3).

Discussion

We studied the association between histopathologic composition of mechanically extracted thrombi and stroke etiology in patients with AIS included in the Dutch MR CLEAN Registry. RBC and F/P contents of thrombi retrieved from patients with AIS differed significantly between strokes of

Fig. 2 Examples of RBC rich (A), F/P rich (B), mixed (C), and leukocyte rich (D) thrombus areas. The inserted boxes represent magnifications of the underlying area of each example. HE-stain, bar = 200 μm (A–C), 100 μm (D), and 25 μm (inserts). RBC are red, F/P purple, and nuclei of leukocytes blue

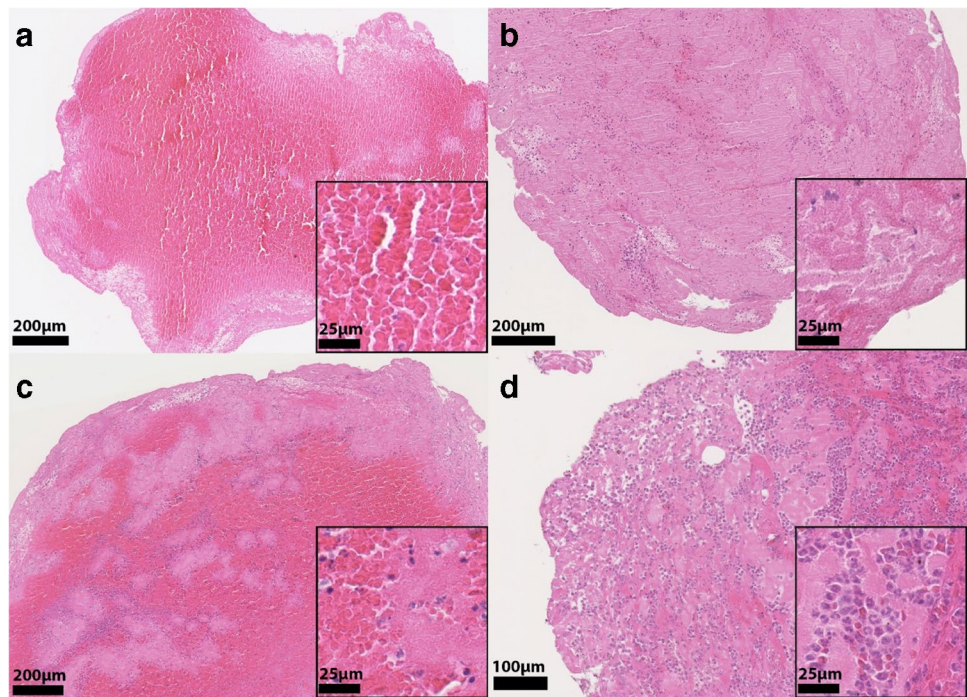


Table 2 Thrombus composition stratified by stroke etiology

	Non-cardioembolic (n = 58)	Cardioembolic (n = 114)	Undetermined (n = 160)
Median (IQR) RBC %	41.2 (20.5–53.0)	25.8 (13.8–38.2)	25.4 (14.3–39.0)
Median (IQR) F/P %	54.5 (42.9–73.0)	67.1 (56.1–80.3)	70.0 (57.1–78.2)
Median (IQR) leukocytes %	4.1 (2.9–6.0)	5.2 (2.7–7.2)	5.0 (3.1–7.4)

Fig. 3 Bar-whisker plot of thrombus composition for the three etiologic groups. P-values are given based on Kruskal Wallis test. x = outliers > 1.5 times box height. Significant differences were found for both erythrocyte content (p < 0.001) and fibrin/platelet content (p = 0.002), but not for leukocytes (p = 0.240)

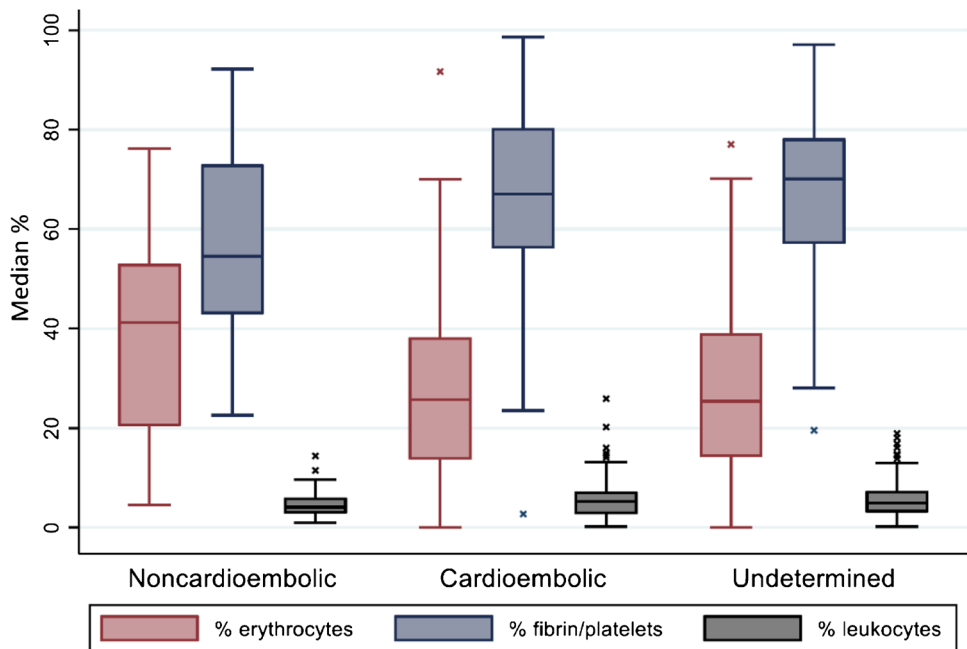


Table 3 Univariable and multivariable multinomial logistic regression for the relationship of thrombus composition with stroke etiology

	Univariable model	Multivariable model*
Base outcome: cardioembolic	<i>OR</i> (95% <i>CI</i>)	<i>aOR</i> (95% <i>CI</i>)
Non-cardioembolic		
RBC	1.03 (1.01; 1.05)	1.02 (1.00; 1.04)
F/P	0.97 (0.95; 0.99)	0.98 (0.96; 1.00)
Leukocytes	0.91 (0.83; 1.01)	0.90 (0.81; 1.01)
Undetermined		
RBC	1.00 (0.99; 1.01)	1.00 (0.98; 1.01)
F/P	1.00 (0.99; 1.01)	1.00 (0.99; 1.02)
Leukocytes	1.00 (0.94; 1.07)	1.00 (0.92; 1.06)

All analyses were done with thrombus components as a continuous variable, expressed as % of the thrombus. Odds ratios for stroke etiology are shown per percentage increase of thrombus components, with 95% confidence intervals. Interpretation: for every 1% increase in RBCs, *OR* for a non-cardioembolic stroke (compared with cardioembolic stroke) is 1.03 (95% *CI* 1.01–1.05). Non-cardioembolic indicates TOAST 1 (large artery sclerosis)+TOAST 4 (other determined cause)

RBC red blood cells, *F/P* fibrin/platelets, and leukocytes white blood cells

*Adjusted for: age, sex, IV thrombolysis, coumarin/DOAC use, and thrombus location

cardioembolic and non-cardioembolic origin. The RBC content in thrombi from patients with non-cardioembolic etiology was higher than in thrombi from patients with a cardiac etiology and thrombi from patients with an undetermined origin. Inversely, the F/P content in thrombi from patients

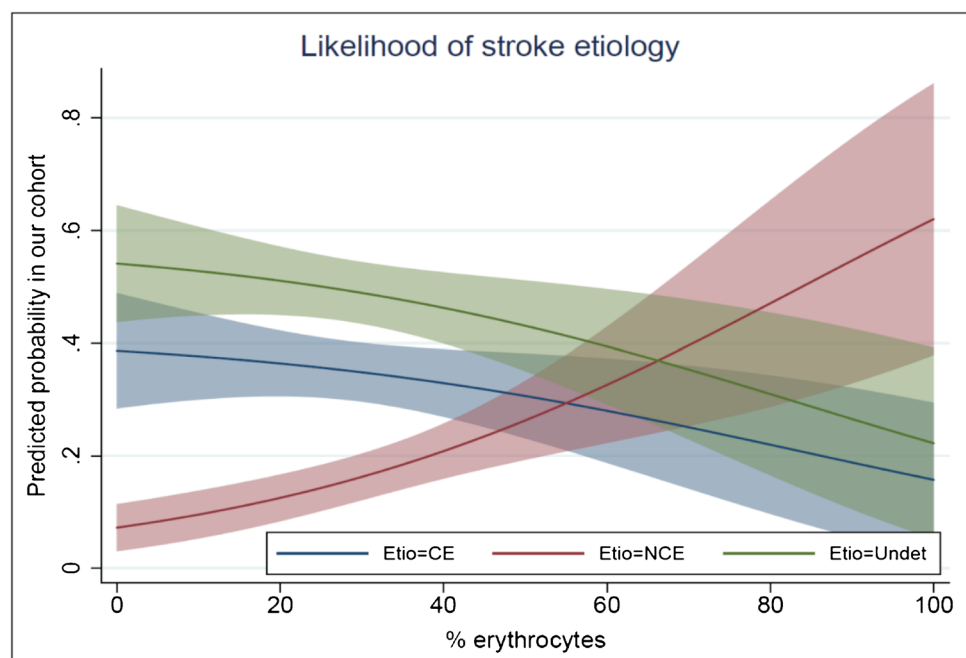
with non-cardioembolic etiology was lower than in thrombi from patients with cardioembolic etiology and thrombi with an undetermined origin. In addition, cardioembolic thrombi had a similar histopathologic composition to thrombi from strokes of undetermined origin.

Our findings of a significant correlation between stroke etiology and thrombus composition are in line with several previous studies [10, 16, 20, 21]. In our cohort, the wide confidence intervals and overlap in composition hamper reliable prediction of stroke etiology based on thrombus composition alone in individual cases. However, an increasingly high percentage of RBC in thrombi is associated with a higher likelihood of a non-cardioembolic etiology.

Like some previous studies [9, 10, 16, 21, 28], a similarity in thrombus composition was found for thrombi of cardioembolic origin and those of undetermined origin. Our results suggest that patients with an undetermined stroke origin and F/P rich thrombi have a higher likelihood of a cardiac source and may benefit from more extensive monitoring for arrhythmias and/or extended cardiac analysis.

Contradictory results in previous studies regarding the relationship between thrombus histology and etiology may in part be caused by random variation in relatively small samples, and a lack of consensus on histopathological processing and analysis [29]. Indeed, studies with larger sample sizes did find significantly higher fractions of RBC in ischemic stroke caused by large artery disease [10, 16, 20, 21], while smaller studies often failed to show such a correlation. Interestingly, all previous studies that found a higher RBC percentage in cardioembolic stroke were performed in an Asian population [9, 30, 31]. Lastly,

Fig. 4 Likelihood of cardioembolic (CE), non-cardioembolic (NCE) and undetermined (Undet) etiology (Etio) based on erythrocyte content after univariable multinomial regression. For every 1% increase in RBC content, the *OR* for a non-cardioembolic stroke (as opposed to cardioembolic stroke) was 1.02



many previous studies included thrombi from patients with posterior circulation stroke [3, 6, 8–10, 12, 13, 15, 18], while the determination of large artery atherosclerosis as a cause of AIS is based on stenosis grading of the anterior circulation.

Recently, studies have started to make use of machine learning software for image analysis [28, 30, 32], which implies training and validating a segmentation model first. Differences in accuracy of these segmentation models will affect quantification of thrombus components. In contrast to previous studies, we used a custom script in conjunction with Orbit image analysis software which enabled visual quality control in batch mode, enabling the possibility of verification of the segmented components RBC, F/P, and leukocytes by an experienced pathobiologist (HB). This diminished uncertainties normally inherent to the use of machine learning algorithms for segmentation purposes, ensuring high quality thrombus classification.

Our study has several limitations. Due to the *ex vivo* nature of thrombus analysis, all studies investigating the association between thrombus composition and stroke etiology theoretically suffer from a selection bias, since data from patients with thrombi resistant to thrombectomy as well as thrombi completely decomposed by IVT are not available for analysis. This study is the first to also have clinical data of all patients in the cohort without thrombus material available for analysis, enabling us to compare characteristics of included patients to those who were not included in the study. Indeed, this comparison was not possible in prior studies, including STRIP [20], through lack of sufficient clinical data in the LVO patient group as a whole. It is a feature that is available in, and a unique characteristic of, the MR CLEAN studies. We can therefore validate that no significant differences were found in stroke etiology between the two groups, and only minor differences in patient baseline characteristics were found. Therefore, we believe our results are valid for the general stroke population eligible for EVT. Using only HE staining makes a reliable differentiation between fibrin and platelets impossible; therefore, these components were combined into one category, F/P. Differentiation of platelets as a separate component and even adding more in-depth immunohistochemical analysis or even 3-D characterization of thrombi could certainly be of interest, as it has been recently shown that platelet content also differs between etiologic groups [32]. Also, since most patients received IVT prior to mechanical thrombectomy, it is possible that (partial) thrombolysis altered thrombus composition; we did, however, adjust for IVT in our regression analysis. Lastly, using the TOAST classification possibly underestimates the number of patients with large artery atherosclerosis as the cause for stroke, since it only values the degree of stenose at the carotid bifurcation. However, we did adhere to this classification, as it is the most used

classification system in practice, enabling comparison of our results with previous studies.

Conclusion

Thrombus composition is significantly associated with stroke etiology, with an increase in RBC and a decrease in F/P, raising the odds for a non-cardioembolic cause. Secondly, thrombus composition of cardioembolic and undetermined etiology are similar. These results suggest that patients with an undetermined origin and F/P-rich thrombi are more likely to have a cardiac cause and may benefit from more extensive monitoring for arrhythmias and/or extended cardiac analysis.

Appendix

MR CLEAN Registry Investigators — group authors

Executive committee

Diederik W. J. Dippel¹, Aad van der Lugt², Charles B. L. M. Majoie³, Yvo B. W. E. M. Roos⁴, Robert J. van Oostenbrugge⁵, Wim H. van Zwam⁶, Jelis Boiten¹⁴, Jan Albert Vos⁸

Study coordinators

Ivo G. H. Jansen³, Maxim J. H. L. Mulder^{1,2}, Robert-Jan B. Goldhoorn^{5,6}, Kars C. J. Compagne², Manon Kappelhof³, Josje Brouwer⁴, Sanne J. den Hartog^{1,2,40}, Wouter H. Hinsenveld^{5,6}

Local principal investigators

Diederik W. J. Dippel¹, Bob Roozenbeek¹, Aad van der Lugt², Adriaan C. G. M. van Es², Charles B. L. M. Majoie³, Yvo B. W. E. M. Roos⁴, Bart J. Emmer³, Jonathan M. Coutinho⁴, Wouter J. Schonewille⁷, Jan Albert Vos⁸, Marieke J. H. Wermer⁹, Marianne A. A. van Walderveen¹⁰, Julie Staals⁵, Robert J. van Oostenbrugge⁵, Wim H. van Zwam⁶, Jeannette Hofmeijer^{11,41}, Jasper M. Martens¹², Geert J. Lycklama à Nijeholt¹³, Jelis Boiten¹⁴, Sebastiaan F. de Bruijn¹⁵, Lukas C. van Dijk¹⁶, H. Bart van der Worp¹⁷, Rob H. Lo¹⁸, Ewoud J. van Dijk¹⁹, Hieronymus D. Boogaarts²⁰, J. de Vries²², Paul L. M. de Kort²¹, Julia van Tuijl²¹, Jo P. Peluso²⁶, Puck Fransen²², Jan S. P. van den Berg²², Boudewijn A. A. M. van Hasselt²³, Leo A. M. Aerden²⁴, René J. Dallinga²⁵, Maarten Uyttenboogaart²⁸, Omid Eschgi²⁹, Reinoud P. H. Bokkers²⁹, Tobien H. C. M. L. Schreuder³⁰, Roel J. J. Heijboer³¹, Koos Keizer³², Lonneke S. F. Yo³³, Heleen M. den Hertog²², Tomas Bulut³⁵, Paul J. A. M. Brouwers³⁴

Imaging assessment committee

Charles B. L. M. Majoie³ (chair), Wim H. van Zwam⁶, Aad van der Lugt², Geert J. Lycklama à Nijeholt¹³, Marianne A. A. van Walderveen¹⁰, Marieke E. S. Sprengers³,

Sjoerd F. M. Jenniskens²⁷, René van den Berg³, Albert J. Yoo³⁸, Ludo F. M. Beenen³, Alida A. Postma⁶, Stefan D. Roosendaal³, Bas F. W. van der Kallen¹³, Ido R. van den Wijngaard¹³, Adriaan C. G. M. van Es², Bart J. Emmer³, Jasper M. Martens¹², Lonke S. F. Yo³³, Jan Albert Vos⁸, Joost Bot³⁶, Pieter-Jan van Doormaal², Anton Meijer²⁷, Elyas Ghariq¹³, Reinoud P. H. Bokkers²⁹, Marc P. van Proosdij³⁷, G. Menno Krietemeijer³³, Jo P. Peluso²⁶, Hieronymus D. Boogaarts²⁰, Rob Lo¹⁸, Wouter Dinkelaar², Auke P. A. Appelman²⁹, Bas Hammer¹⁶, Sjoert Pegge²⁷, Anouk van der Hoorn²⁹, Saman Vinke²⁰

Writing committee

Diederik W. J. Dippel¹ (chair), Aad van der Lugt², Charles B. L. M. Majoie³, Yvo B. W. E. M. Roos⁴, Robert J. van Oostenbrugge⁵, Wim H. van Zwam⁶, Geert J. Lycklama à Nijeholt¹³, Jelis Boiten¹⁴, Jan Albert Vos⁸, Wouter J. Schonewille⁷, Jeannette Hofmeijer^{11,41}, Jasper M. Martens¹², H. Bart van der Worp¹⁷, Rob H. Lo¹⁸

Adverse event committee

Robert J. van Oostenbrugge⁵ (chair), Jeannette Hofmeijer^{11,41}, H. Zwenneke Flach²³

Trial methodologist

Hester F. Lingsma⁴⁰

Research nurses/local trial coordinators

Naziha el Ghannouti¹, Martin Sterrenberg¹, Wilma Pellikaan⁷, Rita Sprengers⁴, Marjan Elfrink¹¹, Michelle Simons¹¹, Marjolein Vossers¹², Joke de Meris¹⁴, Tamara Vermeulen¹⁴, Annet Geerlings¹⁹, Gina van Vemde²², Tiny Simons³⁰, Gert Messchendorp²⁸, Nynke Nicolaij²⁸, Hester Bongenaar³², Karin Bodde²⁴, Sandra Kleijn³⁴, Jasmijn Lodico³⁴, Hanneke Droste³⁴, Maureen Wollaert⁵, Sabrina Verheesen⁵, D. Jeurissen⁵, Erna Bos⁹, Yvonne Drabbe¹⁵, Michelle Sandiman¹⁵, Nicoline Aaldering¹¹, Berber Zweedijk¹⁷, Jocova Vervoort²¹, Eva Ponjee²², Sharon Romviel¹⁹, Karin Kanselaar¹⁹, Denn Barning¹⁰

PhD/Medical students

Esmee Venema⁴⁰, Vicky Chalosi⁴⁰, Ralph R. Geuskens³, Tim van Straaten¹⁹, Saliha Ergezen¹, Roger R. M. Harmsma¹, Daan Muijres¹, Anouk de Jong¹, Olvert A. Berkhemer^{1,3,6}, Anna M. M. Boers^{3,39}, J. Huguet³, P. F. C. Groot³, Marieke A. Mens³, Katinka R. van Kranendonk³, Kilian M. Treurniet³, Manon L. Tolhuisen^{3,39}, Heitor Alves³, Annick J. Weterings³, Eleonora L.F. Kirkels³, Eva J. H. F. Voogd¹¹, Lieve M. Schupp³, Sabine L. Collette^{28,29}, Adrien E. D. Groot⁴, Natalie E. LeCouffe⁴, Praneeta R. Konduri³⁹, Haryadi Prasetya³⁹, Nerea Arrarte-Terreros³⁹, Lucas A. Ramos³⁹

¹Department of Neurology, Erasmus MC University Medical Center, Rotterdam, The Netherlands

²Department of Radiology and Nuclear Medicine, Erasmus MC University Medical Center, Rotterdam, The Netherlands

³Department of Radiology and Nuclear Medicine, Amsterdam UMC, University of Amsterdam, Amsterdam, The Netherlands

⁴Department of Neurology, Amsterdam UMC, University of Amsterdam, Amsterdam, The Netherlands

⁵Department of Neurology, Maastricht University Medical Center and Cardiovascular Research Institute Maastricht (CARIM), Maastricht, The Netherlands

⁶Department of Radiology, Maastricht University Medical Center and Cardiovascular Research Institute Maastricht (CARIM), Maastricht, The Netherlands

⁷Department of Neurology, Sint Antonius Hospital, Nieuwegein, The Netherlands

⁸Department of Radiology, Sint Antonius Hospital, Nieuwegein, The Netherlands

⁹Department of Neurology, Leiden University Medical Center, Leiden, The Netherlands

¹⁰Department of Radiology, Leiden University Medical Center, Leiden, The Netherlands

¹¹Department of Neurology, Rijnstate Hospital, Arnhem, The Netherlands

¹²Department of Radiology, Rijnstate Hospital, Arnhem, The Netherlands

¹³Department of Radiology, Haaglanden MC, The Hague, The Netherlands

¹⁴Department of Neurology, Haaglanden MC, The Hague, The Netherlands

¹⁵Department of Neurology, HAGA Hospital, The Hague, The Netherlands

¹⁶Department of Radiology, HAGA Hospital, The Hague, The Netherlands

¹⁷Department of Neurology, University Medical Center Utrecht, Utrecht, The Netherlands

¹⁸Department of Radiology, University Medical Center Utrecht, Utrecht, The Netherlands

¹⁹Department of Neurology, Radboud University Medical Center, Nijmegen, The Netherlands

²⁰Department of Neurosurgery, Radboud University Medical Center, Nijmegen, The Netherlands

²¹Department of Neurology, Elisabeth-TweeSteden Ziekenhuis, Tilburg, The Netherlands

²²Department of Neurology, Isala Klinieken, Zwolle, The Netherlands

²³Department of Radiology, Isala Klinieken, Zwolle, The Netherlands

²⁴Department of Neurology, Reinier de Graaf Gasthuis, Delft, The Netherlands

²⁵Department of Radiology, Reinier de Graaf Gasthuis, Delft, The Netherlands

²⁶Department of Radiology, Elisabeth-TweeSteden Ziekenhuis, Tilburg, The Netherlands

²⁷Department of Radiology, Radboud University Medical Center, Nijmegen, The Netherlands

²⁸Department of Neurology, University Medical Center Groningen, Groningen, The Netherlands

²⁹Department of Radiology, University Medical Center Groningen, Groningen, The Netherlands

³⁰Department of Neurology, Atrium Medical Center, Heerlen, The Netherlands

³¹Department of Radiology, Atrium Medical Center, Heerlen, The Netherlands

³²Department of Neurology, Catharina Hospital, Eindhoven, The Netherlands

³³Department of Radiology, Catharina Hospital, Eindhoven, The Netherlands

³⁴Department of Neurology, Medisch Spectrum Twente, Enschede, The Netherlands

³⁵Department of Radiology, Medisch Spectrum Twente, Enschede, The Netherlands

³⁶Department of Radiology, Amsterdam UMC, Vrije Universiteit van Amsterdam, Amsterdam, The Netherlands

³⁷Department of Radiology, Noordwest Ziekenhuisgroep, Alkmaar, The Netherlands

³⁸Department of Radiology, Texas Stroke Institute, TX, USA

³⁹Department of Biomedical Engineering & Physics, Amsterdam UMC, University of Amsterdam, Amsterdam, The Netherlands

⁴⁰Department of Public Health, Erasmus MC University Medical Center, Rotterdam, The Netherlands

⁴¹Department of Clinical Neurophysiology, University of Twente, Enschede, The Netherlands

Supplementary Information The online version contains supplementary material available at <https://doi.org/10.1007/s00234-023-03115-y>.

Acknowledgements We would like to thank the MR CLEAN investigators; a list of all investigators is provided in the [Appendix](#). Also, we want to thank Mr. Manuel Stritt, founder of Orbit image analysis software, for his help with the implementation of his software in our analysis of extracted LVO stroke thrombi during and after the 2018 OME Annual Users Meeting, where we first pitched our idea for this manuscript.

Author contribution H. M. Hund: conceptualization, methodology, software, formal analysis, and writing — original draft; N. Boodt: formal analysis, resources, data curation, writing — review and editing; D. Hansen: investigation and data curation; W.A. Haffmans: methodology and software; G. J. Lycklama à Nijeholt: conceptualization, methodology, and writing — review and editing; J. Hofmeijer: writing — review and editing; D.W.J. Dippel: conceptualization, methodology, and writing — review and editing; A. van der Lugt: conceptualization, methodology, and writing — review and editing; A. C. G. M. van Es: conceptualization, methodology, and writing — review and editing; H. M. M. van Beusekom: conceptualization, resources, methodology, and writing — review and editing.

Guarantor The scientific guarantor of this publication is Dr. H. M. M. van Beusekom, Department of Cardiology, Erasmus University Medical Center, Rotterdam, the Netherlands.

Statistics and biometry More than one of the authors have significant statistical expertise.

Study subjects or cohorts overlap Some study subjects have been previously reported in MR CLEAN Registry studies; however, there is no overlap with regard to the research question addressed in the current paper.

Methodology This study is a retrospective analysis of data from the MR CLEAN Registry, which was a prospective, observational, multicenter study of all patients who underwent EVT in the Netherlands.

Funding This study was funded and carried out by the Erasmus University Medical Center, the Academic Medical Center Amsterdam, and the Maastricht University Medical Center. The study was additionally funded by the European Union's Horizon 2020 research and innovation programme under grant agreement No. 777072 (IN-Silico trials for treatment of acute Ischemic Stroke, INSIST), which played no role in the trial design and patient enrolment or in data the collection, analysis, or writing of the manuscript.

Data Availability The participants of this study did not give written consent for their data to be shared publicly, so due to the sensitive nature of the research, supporting data is not available.

Declarations

Conflict of interest We declare that we have no conflict of interest.

Ethical approval The central medical ethics committee of the Erasmus Medical Center Rotterdam, the Netherlands, approved the study protocol and granted permission to carry out the study as a registry (MEC-2014–235).

Informed consent Written informed consent was waived by the Institutional Review Board.

Open Access This article is licensed under a Creative Commons Attribution 4.0 International License, which permits use, sharing, adaptation, distribution and reproduction in any medium or format, as long as you give appropriate credit to the original author(s) and the source, provide a link to the Creative Commons licence, and indicate if changes were made. The images or other third party material in this article are included in the article's Creative Commons licence, unless indicated otherwise in a credit line to the material. If material is not included in the article's Creative Commons licence and your intended use is not permitted by statutory regulation or exceeds the permitted use, you will need to obtain permission directly from the copyright holder. To view a copy of this licence, visit <http://creativecommons.org/licenses/by/4.0/>.

References

1. Arsava EM, Helenius J, Avery R, Sorgun MH, Kim GM, Pontes-Neto OM et al (2017) Assessment of the predictive validity of etiologic stroke classification. *JAMA Neurol* 74(4):419–426. <https://doi.org/10.1001/jamaneurol.2016.5815>

2. Gounis MJ, Chapot R (2017) Histological composition and the origin of the thrombus: a new diagnostic assay for secondary stroke prevention? *Stroke* 48(8):2040–2041. <https://doi.org/10.1161/STROKEAHA.117.017630>
3. Marder VJ, Chute DJ, Starkman S, Abolian AM, Kidwell C, Liebeskind D et al (2006) Analysis of thrombi retrieved from cerebral arteries of patients with acute ischemic stroke. *Stroke* 37(8):2086–2093. <https://doi.org/10.1161/01.STR.0000230307.03438.94>
4. Almekhlafi MA, Hu WY, Hill MD, Auer RN (2008) Calcification and endothelialization of thrombi in acute stroke. *Ann Neurol* 64(3):344–348. <https://doi.org/10.1002/ana.21404>
5. Liebeskind DS, Sanossian N, Yong WH, Starkman S, Tsang MP, Moya AL et al (2011) CT and MRI early vessel signs reflect clot composition in acute stroke. *Stroke* 42(5):1237–1243. <https://doi.org/10.1161/strokeaha.110.605576>
6. Niesten JM, van der Schaaf IC, van Dam L, Vink A, Vos JA, Schonewille WJ et al (2014) Histopathologic composition of cerebral thrombi of acute stroke patients is correlated with stroke subtype and thrombus attenuation. *PLoS One* 9(2):e88882. <https://doi.org/10.1371/journal.pone.0088882>
7. Kim SK, Yoon W, Kim TS, Kim HS, Heo TW, Park MS (2015) Histologic analysis of retrieved clots in acute ischemic stroke: correlation with stroke etiology and gradient-echo MRI. *AJNR Am J Neuroradiol* 36(9):1756–1762. <https://doi.org/10.3174/ajnr.A4402>
8. Simons N, Mitchell P, Dowling R, Gonzales M, Yan B (2015) Thrombus composition in acute ischemic stroke: a histopathological study of thrombus extracted by endovascular retrieval. *J Neuroradiol* 42(2):86–92. <https://doi.org/10.1016/j.neurad.2014.01.124>
9. Ahn SH, Hong R, Choo IS, Heo JH, Nam HS, Kang HG et al (2016) Histologic features of acute thrombi retrieved from stroke patients during mechanical reperfusion therapy. *Int J Stroke* 11(9):1036–1044. <https://doi.org/10.1177/1747493016641965>
10. Boeckh-Behrens T, Kleine JF, Zimmer C, Neff F, Scheipl F, Pelisek J et al (2016) Thrombus histology suggests cardioembolic cause in cryptogenic stroke. *Stroke* 47(7):1864–1871. <https://doi.org/10.1161/STROKEAHA.116.013105>
11. Boeckh-Behrens T, Schubert M, Forschler A, Prothmann S, Kreiser K, Zimmer C et al (2016) The impact of histological clot composition in embolic stroke. *Clin Neuroradiol* 26(2):189–197. <https://doi.org/10.1007/s00062-014-0347-x>
12. Dargazanli C, Rigau V, Eker O, RiquelmeBareiro C, Machi P, Gascou G et al (2016) High CD3+ cells in intracranial thrombi represent a biomarker of atherothrombotic stroke. *PLoS One* 11(5):e0154945. <https://doi.org/10.1371/journal.pone.0154945>
13. Hashimoto T, Hayakawa M, Funatsu N, Yamagami H, Satow T, Takahashi JC et al (2016) Histopathologic analysis of retrieved thrombi associated with successful reperfusion after acute stroke thrombectomy. *Stroke* 47(12):3035–3037. <https://doi.org/10.1161/strokeaha.116.015228>
14. Sallustio F, Arnó N, Legge SD, Koch G, Martorana A, Rossi C et al (2016) Histological features of intracranial thromboemboli predict response to endovascular therapy for acute ischemic stroke. *J Neurol Disord Stroke* 3:1105
15. Schuhmann MK, Gunreben I, Kleinschnitz C, Kraft P (2016) Immunohistochemical analysis of cerebral thrombi retrieved by mechanical thrombectomy from patients with acute ischemic stroke. *Int J Mol Sci* 17(3):298. <https://doi.org/10.3390/ijms17030298>
16. Sporns PB, Hanning U, Schwindt W, Velasco A, Minnerup J, Zoubi T et al (2017) Ischemic stroke: what does the histological composition tell us about the origin of the thrombus? *Stroke* 48(8):2206–2210. <https://doi.org/10.1161/strokeaha.117.016590>
17. Choi MH, Park GH, Lee JS, Lee SE, Lee SJ, Kim JH et al (2018) Erythrocyte fraction within retrieved thrombi contributes to thrombolytic response in acute ischemic stroke. *Stroke* 49(3):652–659. <https://doi.org/10.1161/strokeaha.117.019138>
18. Maekawa K, Shibata M, Nakajima H, Mizutani A, Kitano Y, Seguchi M et al (2018) Erythrocyte-rich thrombus is associated with reduced number of maneuvers and procedure time in patients with acute ischemic stroke undergoing mechanical thrombectomy. *Cerebrovasc Dis Extra* 8(1):39–49. <https://doi.org/10.1159/000486042>
19. Shin JW, Jeong HS, Kwon HJ, Song KS, Kim J (2018) High red blood cell composition in clots is associated with successful recanalization during intra-arterial thrombectomy. *PLoS One* 13(5):e0197492. <https://doi.org/10.1371/journal.pone.0197492>
20. Brinjikji W, Nogueira RG, Kivimäki P, Layton KF, Delgado Almandoz JE, Hanel RA et al (2021) Association between clot composition and stroke origin in mechanical thrombectomy patients: analysis of the Stroke Thromboembolism Registry of Imaging and Pathology. *J Neurointerv Surg* 13(7):594–598. <https://doi.org/10.1136/neurintsurg-2020-017167>
21. Fitzgerald S, Rossi R, Mereuta OM, Jabrah D, Okolo A, Douglas A et al (2020) Per-pass analysis of acute ischemic stroke clots: impact of stroke etiology on extracted clot area and histological composition. *J Neurointerv Surg*. <https://doi.org/10.1136/neurintsurg-2020-016966>
22. Gong L, Zheng X, Feng L, Zhang X, Dong Q, Zhou X et al (2019) Bridging therapy versus direct mechanical thrombectomy in patients with acute ischemic stroke due to middle cerebral artery occlusion: a clinical-histological analysis of retrieved thrombi. <https://doi.org/10.1177/963689718823206>
23. Jansen IGH, Mulder M, Goldhoorn RB, investigators MCR (2018) Endovascular treatment for acute ischaemic stroke in routine clinical practice: prospective, observational cohort study (MR CLEAN Registry). *BMJ* 360:k949. <https://doi.org/10.1136/bmj.k949>
24. Berkhemer OA, Fransen PS, Beumer D, van den Berg LA, Lingsma HF, Yoo AJ et al (2015) A randomized trial of intraarterial treatment for acute ischemic stroke. *N Engl J Med* 372(1):11–20. <https://doi.org/10.1056/NEJMoa1411587>
25. Staessens S, Fitzgerald S, Andersson T, Clarençon F, Denorme F, Gounis MJ et al (2019) Histological stroke clot analysis after thrombectomy: technical aspects and recommendations. *Int J Stroke* 1747493019884527. <https://doi.org/10.1177/1747493019884527>
26. Fitzgerald S, Wang S, Dai D, Murphree DH Jr, Pandit A, Douglas A et al (2019) Orbit image analysis machine learning software can be used for the histological quantification of acute ischemic stroke blood clots. *PLoS One* 14(12):e0225841. <https://doi.org/10.1371/journal.pone.0225841>
27. Adams HP, Jr., Bendixen BH, Kappelle LJ, Biller J, Love BB, Gordon DL et al (1993) Classification of subtype of acute ischemic stroke. Definitions for use in a multicenter clinical trial. TOAST. Trial of Org 10172 in Acute Stroke Treatment. *Stroke* 24(1):35–41. <https://doi.org/10.1161/01.str.24.1.35>
28. Duffy S, McCarthy R, Farrell M, Thomas S, Brennan P, Power S et al (2019) Per-pass analysis of thrombus composition in patients with acute ischemic stroke undergoing mechanical thrombectomy. *Stroke* 50(5):1156–1163. <https://doi.org/10.1161/STROKEAHA.118.023419>
29. De Meyer SF, Andersson T, Baxter B, Bendszus M, Brouwer P, Brinjikji W et al (2017) Analyses of thrombi in acute ischemic stroke: a consensus statement on current knowledge

- and future directions. *Int J Stroke* 12(6):606–614. <https://doi.org/10.1177/1747493017709671>
30. Gong L, Zheng X, Feng L, Zhang X, Dong Q, Zhou X et al (2019) Bridging Therapy Versus Direct Mechanical Thrombectomy in Patients with Acute Ischemic Stroke due to Middle Cerebral Artery Occlusion: A Clinical- Histological Analysis of Retrieved thrombi. *Cell Transplant* 28(6):684–690. <https://doi.org/10.1177/0963689718823206>
31. Shin JW, Jeong HS, Kwon H-J, Song KS, Kim J. High red blood cell composition in clots is associated with successful recanalization during intra-arterial thrombectomy. *PLoS One* 13(5):e0197492. <https://doi.org/10.1371/journal.pone.0197492>
32. Fitzgerald S, Dai D, Wang S, Douglas A, Kadirvel R, Layton KF et al (2019) Platelet-rich emboli in cerebral large vessel occlusion are associated with a large artery atherosclerosis source. *Stroke* 50(7):1907–1910. <https://doi.org/10.1161/STROKEAHA.118.024543>

Publisher's note Springer Nature remains neutral with regard to jurisdictional claims in published maps and institutional affiliations.