



**Universiteit
Leiden**
The Netherlands

Harnessing neoantigens for targeted cancer treatment

Bulk, J. van den

Citation

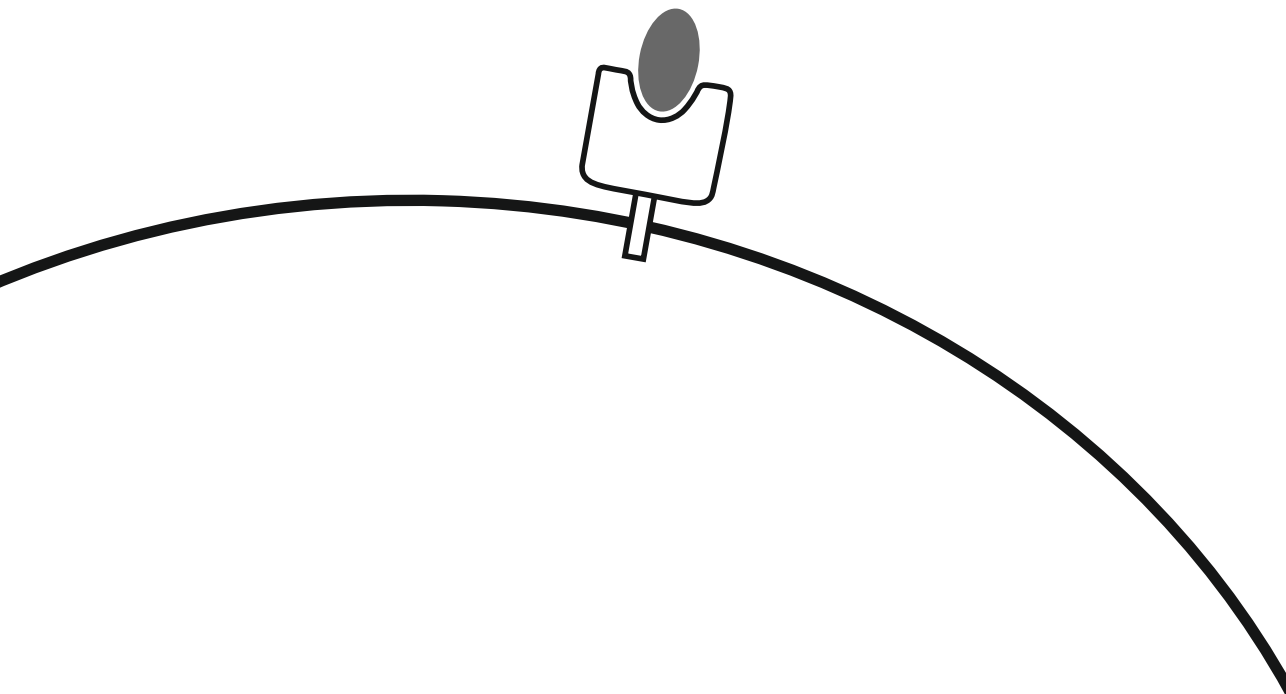
Bulk, J. van den. (2024, March 6). *Harnessing neoantigens for targeted cancer treatment*. Retrieved from <https://hdl.handle.net/1887/3720080>

Version: Publisher's Version

License: [Licence agreement concerning inclusion of doctoral thesis in the Institutional Repository of the University of Leiden](#)

Downloaded from: <https://hdl.handle.net/1887/3720080>

Note: To cite this publication please use the final published version (if applicable).



CHAPTER 2

Cancer immunotherapy: broadening the scope of targetable tumours

Jitske van den Bulk, Els M.E. Verdegaal and Noel F.C.C. de Miranda

Open Biology. 2018;8(6).

DOI: 10.1098/rsob.180037

ABSTRACT

Cancer immunotherapy has experienced remarkable advances in recent years. Striking clinical responses have been achieved for several types of solid cancers (e.g. melanoma, non-small cell lung cancer, bladder cancer and mismatch repair-deficient cancers) after treatment of patients with T-cell checkpoint blockade therapies. These have been shown to be particularly effective in the treatment of cancers with high mutation burden, which places tumour-mutated antigens (neo-antigens) centre stage as targets of tumour immunity and cancer immunotherapy. With current technologies, neo-antigens can be identified in a short period of time, which may support the development of complementary, personalized approaches that increase the number of tumours amenable to immunotherapeutic intervention. In addition to reviewing the state of the art in cancer immunotherapy, we discuss potential avenues that can bring the immunotherapy revolution to a broader patient group including cancers with low mutation burden.

INTRODUCTION

The field of cancer immunotherapy has experienced alternating periods of success and failure in the development of cancer therapies. In the late nineteenth century, William Coley treated cancer patients by local injection with bacterial toxins, which provoked anti-tumour immune responses in some patients¹. In the 1960s, Thomas and Burnet postulated the cancer immune surveillance theory, where the immune system would specifically eliminate malignant cells, most probably through recognition of tumour-associated antigens^{2,3}. This was followed by the elucidation of the role of T cells in anti-tumour immune responses which led to the clinical use of the T-cell growth factor interleukin-2 (IL-2). In 1991, IL-2 was approved by the FDA for the treatment of metastatic renal cell carcinoma and, in 1998, for metastatic melanoma. However, IL-2 treatments produced high toxicity and yielded a relatively low response rate, underlining the need to develop improved immunotherapeutic strategies^{4,5}.

The transition to targeted immunotherapy was made with the development of the hybridoma technology, in 1975, which supported the production of monoclonal antibodies⁶. Rapidly, monoclonal antibody-based treatments were set up and the first FDA approval was obtained for rituximab in 1997 for the treatment of B-cell lymphomas. Rituximab is a genetically engineered monoclonal antibody directed against the CD20 antigen which is ubiquitously expressed in B cells and triggers cell death by antibody-dependent cell-mediated cytotoxicity, complement activation and direct induction of apoptosis^{7,8}. In the same decade, chimaeric antigen receptor (CAR) T cells were developed to combine the antigen-binding properties of antibodies with the cytolytic and self-renewal capacity of T cells^{9,10}. CAR T cells are genetically engineered to express an extracellular antigen-recognition domain, such as antibody-derived, single chain variable fragments, coupled to T-cell activation endodomains. The most significant clinical results have been achieved with CD19-targeting CAR T cells in haematological malignancies^{11,12}.

More recently, a number of antibodies targeting cellular immune checkpoints (e.g. PD-1/PD-L1 and CTLA-4) have been developed to promote the activation of T cells and subsequent tumour control. This treatment strategy has been shown to be particularly effective in tumours with high mutation burden, putting tumour-mutated antigens (neo-antigens) centre stage in cancer immunotherapy¹³⁻¹⁹.

ANTIGEN PRESENTATION AND CANCER IMMUNOTHERAPY

Antigen processing and presentation enables the immune system to monitor cellular processes and to act accordingly upon expression of aberrant/foreign proteins. Human leukocyte antigen (HLA) class I molecules present antigens at the surface of most cells throughout the organism. Such antigens can, theoretically, be derived from most cellular proteins as these are processed by the (immuno) proteasome and broken down to peptides²⁰. Subsequently, transporter associated with antigen processing (TAP) proteins

mediate the intake of these peptides to the endoplasmic reticulum, where they are loaded onto HLA class I molecules with the aid of several chaperones^{21,22}. HLA class I/peptide complexes translocate via the Golgi apparatus to the cell surface where they are exposed to CD8⁺ T cells²³. Nevertheless, an effective anti-tumour immune response is thought to be initiated by the taking up of tumour antigens by antigen-presenting cells (APCs) which in turn present them, and provide costimulatory signals, to both CD4⁺ and CD8⁺ T cells²⁴. In order to do so, APCs, particularly dendritic cells, process antigens through an exogenous antigen processing pathway where (tumour) cellular material is phagocytosed and converted into HLA class I- and class II-binding peptides that are presented to CD8⁺ (cross-presentation) and CD4⁺ T cells, respectively²⁵. HLA class II expression is also known to occur in some tumour types although its functional significance and how it can be exploited from an immunotherapeutic point of view require further investigation^{26,27}.

Antigens that are considered to evoke anti-tumour immune responses and which are therefore suitable as immunotherapeutic targets can be divided into three groups: tumour-mutated antigens (or neo-antigens), tumour-associated antigens and cancer-testis antigens²⁸. Viral antigens constitute another class of targetable antigens in the context of viral oncogenesis but will not be discussed here. Tumour-associated and cancer-testis antigens are both self-antigens that are differentially expressed in tumour tissues and rarely expressed (or to lower extent) in normal tissues. The stimulation of endogenous T-cell responses against self-antigens can be challenging as auto-reactive T cells are subjected to negative selection in the thymus²⁹. Nevertheless, it has been shown that central tolerance can be broken and that immune responses can be generated against self-antigens, analogous to what is observed in autoimmunity³⁰. Positive clinical indications have been described for several tumour-associated antigens (e.g. gp100, MART-1) and cancer-testis antigens (e.g. MAGE-A3 and NY-ESO-1)^{31–34}. However, subsequent clinical trials were not always able to confirm patient survival benefits and side-effects were regularly observed due to expression of the targeted antigens in healthy tissues^{35–37}.

Neo-antigens are by definition tumour-specific as they arise from somatic mutations that are not present in healthy tissue. Theoretically, they constitute ideal targets for immunotherapy because no off-target reactivity and central tolerance of T cells are expected³⁸. The accumulation of somatic mutations is a hallmark of tumour progression, but only a minority of mutations is under positive selection and, therefore, recurrently observed in different patients. Hence, individual tumour mutation profiles are dominated by the so-called *passenger* mutations which are highly variable between cancers and patients³⁹. The development of next-generation sequencing (NGS) technologies has made it possible to screen entire (coding) genomes for the detection of potential neo-antigens in a clinically applicable timeframe. *In silico* tools aiming at identifying neo-antigens more likely to constitute good immunotherapy targets are also under constant development^{40–44}.

The requirement of a personalized approach to target neo-antigens can be a time-consuming and onerous procedure. While this limitation could be circumvented by the targeting of recurrent mutations at driver genes such as *BRAF* and *KRAS*, accumulated evidence suggests that such mutations are seldom immunogenic^{45,46}. In fact, this might be expected, as it would be unlikely that immunogenic mutations would be so often favoured by clonal selection during tumour progression. Another aspect complicating the targeting of neo-antigens relates to intra-tumour heterogeneity. The identification of neo-antigens requires that the tumour is sampled and further processed for nucleic acid isolation and sequencing. Several reports have identified sampling issues as a major limitation for a comprehensive characterization of somatic alterations in tumours^{47,48}. On the other hand, cancer therapies, including immunotherapies, will probably be the most successful when targeting clonal alterations present in any part of a tumour mass¹³. Another caveat that must be considered is that neo-antigens, particularly the ones derived from point mutations, have very similar sequences to their wild-type counterpart. If amino acid substitutions at anchor residues do not affect the binding affinity to HLA molecules or if substitutions at core residues do not significantly alter the molecular properties of a peptide, the likelihood that high avidity TCRs are present in an autologous T-cell repertoire may be low. This supports a fundamental role for frameshift mutations as these have the potential to generate highly immunogenic peptides⁴⁹. However, frameshifts are notoriously difficult to detect, particularly in NGS data, and the capacity to identify them varies greatly between research groups.

THE STATE OF THE ART IN CANCER IMMUNOTHERAPY

T cells are key players in anti-tumour immunity and, therefore, the bulk of cancer immunotherapy research has focused on inducing T-cell-mediated anti-tumour responses. The current breakthrough in cancer immunotherapy results from the identification and subsequent targeting of checkpoint mechanisms in T cells with antibodies against CTLA-4, PD-1 and PD-L1^{50–53}. CTLA-4 and PD-1 are co-inhibitory receptors found on the cell surface of T cells. Upon binding to their corresponding ligands (CD80/86 and PD-L1/L2, respectively), T cells become anergic: a physiological mechanism of peripheral tolerance or halting of inflammatory responses⁵⁴. In the context of the tumour microenvironment, the aberrant expression of immune checkpoint ligands (on tumour and immune cells), together with chronic exposure to tumour antigens, can lead to the undesirable suppression of T-cell activity⁵⁵. The blocking of such mechanisms can therefore unleash a renovated antitumour immune response. Moreover, checkpoint blockers were found to broaden the target of cytotoxic T-cell responses in cancer patients^{56,57}.

Treatment with checkpoint blocking antibodies has been approved for a number of cancers including melanoma, urothelial bladder cancer, head and neck squamous cell carcinoma, non-small cell lung cancer and classical Hodgkin lymphoma, while positive indications has been found for many other malignancies^{50,58–62}. Immune checkpoint blockade has been shown to be most effective in tumours with high mutation burden that arises

either from chronic exposure to DNA-damaging agents (e.g. smoking and ultraviolet radiation) or as a consequence of intrinsic DNA repair defects^{16,17,63}. Accordingly, clinical responses have also been correlated with the mutation burden of tumours derived from the same organ^{16,17,62}. Notably, pembrolizumab, an anti-PD-1 antibody, constitutes the FDA's first tissue/ site-agnostic, molecular-guided approval as it is indicated for advanced mismatch repair-deficient cancers. These findings support the central role of neo-antigens in the therapeutic responses to immune checkpoint blockers. Nevertheless, the majority of patients with the so-called hypermutated tumours do not respond to checkpoint blockade and the ability to predict responses by discovering additional biomarkers is a major focus of research in the field⁶⁴. In order for CD8⁺ T cells to fulfil their cytotoxic activity, they must infiltrate tumour tissues and subsequently recognize cancer antigens loaded on HLA class I molecules. Therefore, defects in the antigen processing and presentation machinery are often observed as immunoeediting phenotypes in tumour cells^{65–69}. Additionally, tumour cells can escape cytokine-mediated immune responses by mutating components of the IFN- γ pathway. Metastatic melanoma patients that did not respond to CTLA-4 treatment were found to have tumours with genetic defects in *IFNGR1/2*, *IRF1* and *JAK2*⁷⁰. Similarly, melanoma and MMR-deficient colorectal cancer patients were found to be resistant to anti-PD-1 treatment due to inactivating mutations in *JAK1/2*^{71,72}. Neo-antigen availability can also change in a tumour, due to clonal selection by immunoeediting, enforced by neo-antigen-specific T cells^{73,74}.

Spontaneous, neo-antigen-driven, anti-tumour responses arise in many cancer patients, as demonstrated by the isolation of neo-antigen-reactive tumour-infiltrating lymphocytes (TIL)⁷⁵. Furthermore, the presence of TIL, particularly with a type 1 inflammatory profile (i.e. IFN- γ /IL-2-driven immune responses), is generally associated with an improved prognosis in cancer patients^{76,77}. One approach to boost an autologous lymphocyte-mediated anti-tumour response is through adoptive T-cell transfer (ACT), which relies on the *ex vivo* expansion of tumour-reactive T cells and their reinfusion back in the patient⁷⁸. The infusion product can consist of TIL or peripheral blood-derived tumour-specific T cells that are expanded in the presence of tumour cells or tumour antigens^{79,80}. ACT-based treatments have produced some encouraging results, particularly for metastatic melanoma patients^{73,80–83}. Verdegaal *et al.* reported on the successful treatment of a metastatic melanoma patient with CD4⁺ and CD8⁺ tumour-specific T cells^{73,80}. In a fascinating example, the potency of neo-antigen-specific ACT is illustrated by the treatment of a metastatic cholangiocarcinoma patient, treated with a neo-antigen-reactive CD4⁺ T-cell product derived from TIL, resulting in stable disease⁸². These findings underscore the relevance that ACT might have for some patients, but similar to for checkpoint blockade, there is a need to discover biomarkers that indicate *a priori* which patients may benefit from it.

Today, many ongoing clinical trials are investigating the clinical effect of combining different immunotherapies. The use of anti-CTLA-4 in addition to anti-PD-1 antibodies resulted in increased overall survival rates in previously untreated melanoma patients^{84,85}. Fur-

thermore, other immune regulators, such as LAG-3, TIM-3, ICOS or NKG2D are promising new therapeutic targets^{86–90}. Additional research will be important to address resistance to first-generation immune checkpoint blockers as, for instance, LAG-3 and TIM-3 up-regulation is observed following anti-PD-1 treatment⁸⁶. Likewise, CD137 co-stimulation is studied for its synergistic effects with ACT^{91,92}. Finally, checkpoint blockade therapies may also be used in combination with standard chemo- and radiotherapy interventions which are known to enhance tumour immunogenicity^{93,94}.

Other avenues like therapeutic vaccination with synthetic peptides corresponding to neo-antigens are being explored. This strategy aims to prime autologous T cells from cancer patients against tumour-specific antigens to unleash anti-tumour immune responses. In addition to providing neo-antigens as immunotherapy products, several co-stimulatory factors are needed to induce an effective antitumour T-cell response⁹⁵, including provision of danger signals by adjuvants and/or homing of cellular-based vaccines^{96–98}. Encouraging clinical responses were obtained with neo-antigen-based peptides plus polyI:CLC vaccinations in previously untreated metastatic melanoma patients⁹⁹. This intervention was shown to induce CD4⁺ and CD8⁺ antitumour T-cell responses against several epitopes. Four out of six patients had no recurrence after 25 months; two patients with tumour recurrence received subsequent anti-PD1 therapy leading to complete tumour regression⁹⁹. In another phase I study, stage III melanoma patients pre-treated with ipilimumab and by surgical resection received a vaccine consisting of autologous dendritic cells presenting neo-antigens that were determined by sequencing¹⁰⁰. Both vaccination strategies induced tumour-directed immune responses with concomitant broadening of the targeted antigen repertoire without inducing side-effects^{99,100}. Nevertheless, to date, the number of vaccination studies involving neo-antigens that reported positive clinical outcomes is limited. This might be explained by the fact that the bulk of this research, in previous decades, has focused on targeting oncogenes and tumour suppressors (e.g. TP53) with recurrent mutations¹⁰¹. Therefore, these studies did not consider the largest source of neo-antigens in tumour—*passenger* mutations.

The requirement that neo-antigens are presented in complex with HLA class I hinders the widespread application of neo-antigen-targeted therapies in the form of peptide vaccination or ACT. Therefore, CAR T cells were designed to enable the targeting of any cell surface molecule, in an HLA non-restricted fashion⁹. This strategy has been particularly successful for treating haematological malignancies, because highly tissue/cell-restricted antigens are present on their easily accessible cells of origin^{10–12}. In 2010, the first successful CAR T-cell therapy was reported in a lymphoma patient who was pre-treated with chemotherapy¹⁰. The infusion product consisted of autologous T cells transduced with retroviruses encoding the variable region of the anti-CD19, B-cell antigen, which was joined to part of the co-stimulatory CD28 molecule and CD3 ζ signalling domain for T-cell activation. Investigations in larger cohorts showed clinical responses^{102,103}, but severe side-effects arose, including treatment-related deaths^{104–106}. These side-effects

derive from high cytokine concentrations (cytokine storm), produced by the infused engineered T cells that become hyper-activated as a result of high affinity of their receptor to the target molecules. Recently, two second generation CAR therapies targeting CD19 have been approved by the FDA for treatment of patients with relapsed/refractory diffuse large B-cell lymphoma and relapsed/refractory B-cell precursor acute lymphoblastic leukaemia^{107,108}. In search for optimal effectivity and specificity, third generation CARs are currently being developed, which contain two co-stimulatory domains^{109–112}. Furthermore, investigations are ongoing to improve the treatment of haematological diseases while limiting the severity of side-effects, as well as investigations on the clinical efficacy of genetically engineered T cells in solid tumours^{109,113,114}. The targeting of the latter has proved to be particularly challenging and complicating factors include the identification of specific, targetable antigens and the homing of CAR T cells to the tumour tissues where in turn they are exposed to a complex tumour microenvironment¹¹⁵. On the other hand, CAR T cells are a very attractive tool to treat cancers arising in non-vital organs where specific antigens are expressed (e.g. thyroid and ovaries).

THE IMMUNE LANDSCAPE OF LOW MUTATION BURDEN TUMOURS

As discussed, neo-antigens constitute attractive targets for immunotherapy and clinical responses with checkpoint blockers have been correlated to the mutation burden of tumours^{16,62}. Cancers with 10 mutations/Mb or more have been proposed as susceptible for checkpoint blockade, indicating the importance of neo-antigen presence for a potent immune response¹¹⁶. However, not all patients with high mutation burden tumours benefit from these therapies, and the precise determinants of response are undefined at the moment. Furthermore, the division between tumours with high, moderate and low mutation burden is somewhat arbitrary. In theory, tumours with low/moderate mutation burden that present neo-antigens in complex with HLA class I could still be eligible for T-cell-mediated immunotherapy. However, several questions remain unanswered: does the low number of neo-antigens translate to the improbability that a neo-antigen ‘survives’ the antigen processing machinery? On the other hand, if a small number of neo-antigens is indeed presented by a tumour cell, is it enough to provoke an inflammatory response that is required for tumour elimination?

Medulloblastoma, the most common brain tumour in children, has a low mutation burden, but was found to upregulate IDO1 expression¹¹⁷. IDO1 enhances immunosuppressive effects leading to an increase of Tregs and dampened activity of effector T cells¹¹⁸. Therefore, upregulation of IDO1 can be classified as an immune escape mechanism, indicating a role for the immune system in the control of medulloblastoma progression. Additionally, acute myeloid leukaemia (AML) cells are known to overexpress PD-L1¹¹⁹ and IDO1¹²⁰, and AML blasts can secrete arginase II in order to promote immune escape by suppressing T-cell proliferation and polarizing monocyte differentiation towards an M2 phenotype¹²¹. Another tumour with low/moderate mutation burden, Hodgkin lymphoma, is characterized by few tumour cells and many immune cells that are attracted by the tumour-secreted cy-

tokines¹²². However, these tumour-infiltrating immune cells display an immunosuppressive rather than anti-tumourigenic phenotype¹²². Immunotherapies are regularly employed to treat this disease, including antibodies targeting CD20, CD30 and checkpoint inhibitors targeting PD-1^{17,61,123}. Effectiveness of the latter may reside in the genetic overexpression of PD-L1 by the tumour cells¹²². TILs in Hodgkin lymphoma were found to express low levels of PD-1, but the blockade of this co-inhibitory mechanism was shown to result in an enhanced anti-tumour activity⁶¹. This finding underlines the existence of a T-cell-mediated anti-tumour response, which might be circumvented by the tumour through PD-L1 expression. Nevertheless, the immune evasive mechanisms observed in AML and Hodgkin lymphoma are probably closely connected to the function of their precursor cells and the persistent interaction of these pathologies with the immune system. A last example of a tumour type with low/moderate mutation burden that has potential for treatment with immunotherapeutic strategies is renal cell carcinoma (RCC). Sensitivity to immunotherapeutic intervention in this tumour type was already known from the clinical responses of some RCC patients to IL-2 treatment¹²⁴. Recently, patient overall survival was shown to increase from 19.6 to 25 months with anti-PD-1 therapy compared to standard care with the mTOR inhibitor everolimus¹²⁵. The underlying mechanisms making this tumour susceptible for immunotherapeutics are not understood yet, but the composition of the tumour microenvironment might play an important role. High lymphocyte infiltration was found to correlate with high risk for disease progression, which is a paradox characteristic of RCC. This might relate to the exhausted phenotype of infiltrating lymphocytes which contributes to an immunosuppressive microenvironment¹²⁶. Furthermore, neo-antigen depletion due to immune selection was demonstrated to occur in RCC and a positive correlation was observed between mutations in the antigen-presenting machinery and cytotoxic activity by immune cells, suggesting the presence of ongoing anti-tumour immune reactions⁶⁷. Finally, RCC was found to have the highest number of frameshift mutations out of 19 different cancer types, which might explain the immunogenicity observed in these tumours despite their moderate total mutation burden⁴⁹. These examples of tumours with low mutation burden presenting susceptibility to immunotherapeutic strategies indicate the existence of autologous tumour-specific T cells with the potential to recognize (neo-) antigens, even when present in small numbers.

IMMUNOTHERAPIES FOR TUMOURS WITH LOW MUTATION BURDEN

Previous works by Tran *et al.*^{82,127} support the idea that most tumours present neo-antigens and that these can be targeted by the immune system, e.g. gastrointestinal cancers with low and moderate mutation burden including a cholangiocarcinoma patient with only 26 non-synonymous mutations. Therefore, the clinical applicability of neo-antigen-targeted ACT or peptide-based vaccination strategies for low mutation burden tumours should be explored. The detection rate of autologous T-cell reactivity to neo-antigens is often described to be approximately 1% of the non-synonymous mutations that are transcribed in a tumour^{83,127,128}. Currently, NGS is regularly used to determine neo-antigen presence, but improvements in capture methods for targeted panels (e.g. exome) and mutation de-

tection algorithms might enhance the initial pool of targetable mutations in tumours with low mutation burden. For these, the use of *in silico* prediction models for antigen processing and HLA binding affinity might not be necessary for a first T-cell reactivity screening using long peptides, because the number of mutations is low and all neo-antigens can be tested for their ability to induce T-cell activation. However, to directly investigate T-cell reactivity against short peptides, *in silico* tools are still required.

Immunotherapies have a high synergistic potential with standard chemo- and radiotherapies as these are known to induce immunogenic cell death^{129,130}. This synergy might be especially valuable for tumours with low mutation burden which do not respond to immunotherapy alone, and which could benefit from the transformation of a 'cold' immune microenvironment into a 'hot' microenvironment with an inflammatory profile (Figure 1)^{131,132}. The rationale of classical chemotherapy and radiotherapy encompasses the targeting of fast-dividing tissues by impairing mitosis and inducing DNA damage. This leads to the release of tumour antigens and damage-associated molecular patterns which activate APCs¹³³. Macrophages are attracted to consume the damaged tumour cells, which further enhances the antitumour response of T cells upon presentation of the tumour antigens¹³⁴. In addition, radiotherapy leads to the release of nuclear DNA in the cytoplasm, activating the stimulator of interferon genes (STING) pathway, which is a direct link between the innate immune system and DNA damage^{135,136}. Furthermore, the tumour microenvironment is disrupted by chemoradiation, thereby disturbing the immune suppressive milieu in tumours. This includes increased antigen presentation and expression of co-stimulatory molecules as well as inhibition of regulatory T-cell and myeloid-derived suppressor cell function^{129,137–139}. In melanoma patients, an improved clinical response rate was observed upon treatment with a combination of anti-CTLA-4/PD-1 with radiotherapy, compared to treatment without radiation¹³⁰. Moreover, combined radiotherapy with anti-CTLA-4 treatment induced abscopal effects (shrinkage of tumour lesions outside of the target region of radiotherapy), in this case consisting of complete regression of metastases at different sites¹⁴⁰. Similarly, abscopal effects were observed in a treatment-refractory metastatic lung adenocarcinoma patient after therapy with radiotherapy and ipilimumab¹⁴¹. Tumours treated pre-surgically with neo-adjuvant therapy might be particularly interesting for the investigation of the synergistic effect of chemoradiation and immunotherapy in cancers with low mutation burden. Among these, rectal cancers and oesophageal tumours are excellent candidates for clinical trials aiming at reducing mortality and treatment-related morbidity.

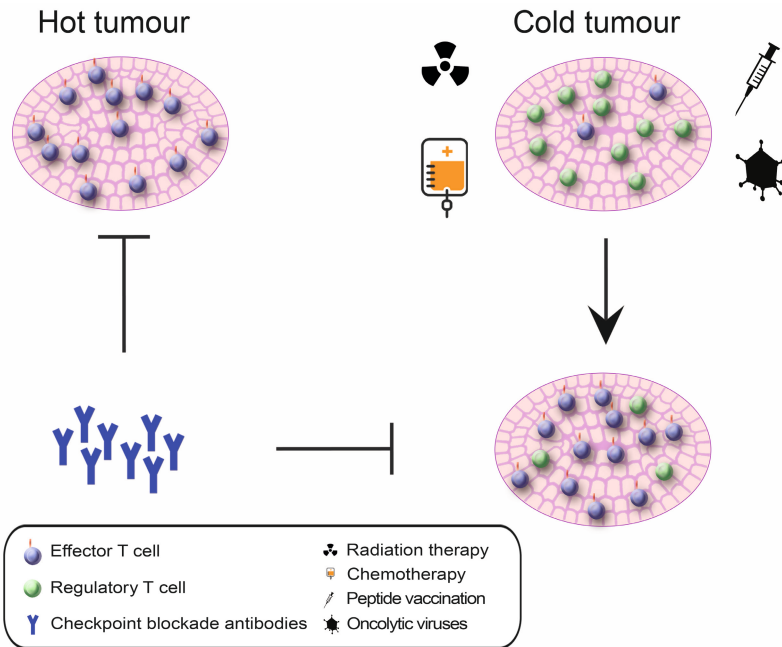


Figure 1. (Immuno) therapeutic strategies in tumours with 'hot' and 'cold' immune microenvironments. Checkpoint blockade therapies are mostly applicable to 'hot' tumours which present an inflammatory profile as a consequence of their high mutation burden. We propose that 'cold' tumours might be sensitized to checkpoint blockade if this is used in combination with radiotherapy, chemotherapy, peptide vaccination or oncolytic viruses, to boost anti-tumour immune responses.

Another avenue that may lead to the sensitization of additional tumours to immunotherapeutic intervention is epigenetic modulation of cancer cells¹⁴². Epigenetic regulation is fundamental for gene expression and, consequently, for neo-antigen availability. Furthermore, in order to evade the immune system, tumours might acquire epigenetic footprints that change the expression of immunomodulatory genes. For instance, the expression of specific HLA alleles, with affinity to neo-antigens, can be suppressed in tumour cells due to epigenetic changes^{143,144}. Such observations are strongly supportive of adopting epigenetic modifiers to restore or improve immunogenicity of some cancers¹⁴⁵. More specifically, epigenetic modifiers have been shown to increase CD8⁺ T-cell infiltration in ovarian cancer and the immunogenicity of colorectal cancer cells was increased upon treatment with DNA-demethylating agents^{146,147}. Epigenetic drugs could thus tackle the heterogenic expression of, among others, HLA molecules and neo-antigens, thereby enhancing anti-tumour immunity.

Another obstacle to employing immunotherapies for the treatment of tumours with low mutation burden relates to the fact that they are usually poorly infiltrated by immune cells. The initiation of an adaptive anti-tumour immune response probably relies on a robust inflammatory trigger that is absent in poorly immunogenic tumours. On the other hand,

such inflammatory threshold in tumours with high mutation burden is most likely reached due to the abundance of mutated antigens. A strategy to artificially induce an inflammatory response that complements immunotherapeutic approaches is oncolytic virotherapy (Figure 1). Talimogene laherparepvec, a genetically engineered herpes virus, replicates specifically in cancer cells and induces tumour cell death¹⁴⁸. It was also shown to induce the expression of GM-CSF in tumours, which attracts dendritic cells that take up tumour antigens after cancer cell death. A phase Ib clinical trial obtained objective response rates (62%) and complete response rates (33%) in advanced melanoma patients, which were treated with a talimogene laherparepvec vaccination combined with pembrolizumab (anti-PD-1 blocker)¹⁴⁹. The vaccination treatment was shown to induce infiltration of T cells that often expressed PD-1, especially in otherwise non-infiltrated ‘cold’ tumours, explaining the patients’ sensitivity to PD-1 blockade. While such combination therapies were mainly performed in immunogenic tumours, their success and rationale supports the investigation of their applicability in tumours with low mutation burden.

CONCLUDING REMARKS

Immunotherapy, particularly checkpoint blockade, can induce robust and durable anti-tumour responses in a significant proportion of patients, predominantly when applied for the treatment of cancers with high mutation burden. Until today, the applicability of these treatments for other cancer types is very limited. During the last decade, different groups have demonstrated the possibility of identifying neo-antigen-targeted immune cell responses in tumours with intermediate/ low mutation burden. Recent work in our laboratory confirms that neo-antigen-reactive T cells are present in low mutation burden, mismatch repair-proficient colorectal carcinomas (van den Bulk *et al.* 2018, unpublished data). These findings underscore the relevance of developing neo-antigen targeting immunotherapies for low mutation burden tumours by tuning anti-tumour inflammatory responses. ‘Cold’, poorly immunogenic, tumours will require rationale-based interventions that make use of combinatorial therapies, including radio/chemotherapy or oncolytic viruses, to switch cancer immune microenvironments to a ‘hot’ state.

COMPETING INTERESTS

We declare we have no competing interests.

FUNDING

This work was supported by the Alpe d’HuZes/KWF Bas Mulder Award (UL2015-7664), Veni ZonMw grant no. (91617144) and KWF grant no. (10815).

REFERENCES

1. Coley WB. The treatment of malignant tumors by repeated inoculations of erysipelas. With a report of ten original cases. *Am J Med Sci.* 1893(105):488-511.
2. Burnet FM. Immunological aspects of malignant disease. *Lancet (London, England).* 1967;1(7501):1171-4.
3. Burnet FM. The concept of immunological surveillance. *Progress in experimental tumor research.* 1970;13:1-27.
4. Rosenberg SA, Lotze MT, Muul LM, Leitman S, Chang AE, Ettinghausen SE, et al. Observations on the systemic administration of autologous lymphokine-activated killer cells and recombinant interleukin-2 to patients with metastatic cancer. *The New England journal of medicine.* 1985;313(23):1485-92.
5. Atkins MB, Lotze MT, Dutcher JP, Fisher RI, Weiss G, Margolin K, et al. High-dose recombinant interleukin 2 therapy for patients with metastatic melanoma: analysis of 270 patients treated between 1985 and 1993. *Journal of clinical oncology : official journal of the American Society of Clinical Oncology.* 1999;17(7):2105-16.
6. Kohler G, Milstein C. Continuous cultures of fused cells secreting antibody of predefined specificity. *Nature.* 1975;256(5517):495-7.
7. Maloney DG, Grillo-Lopez AJ, White CA, Bodkin D, Schilder RJ, Neidhart JA, et al. IDEC-C2B8 (Rituximab) anti-CD20 monoclonal antibody therapy in patients with relapsed low-grade non-Hodgkin's lymphoma. *Blood.* 1997;90(6):2188-95.
8. Reff ME, Carner K, Chambers KS, Chinn PC, Leonard JE, Raab R, et al. Depletion of B cells in vivo by a chimeric mouse human monoclonal antibody to CD20. *Blood.* 1994;83(2):435-45.
9. Eshhar Z, Waks T, Gross G, Schindler DG. Specific activation and targeting of cytotoxic lymphocytes through chimeric single chains consisting of antibody-binding domains and the gamma or zeta subunits of the immunoglobulin and T-cell receptors. *Proceedings of the National Academy of Sciences.* 1993;90(2):720.
10. Kochenderfer JN, Wilson WH, Janik JE, Dudley ME, Stetler-Stevenson M, Feldman SA, et al. Eradication of B-lineage cells and regression of lymphoma in a patient treated with autologous T cells genetically engineered to recognize CD19. *Blood.* 2010;116(20):4099-102.
11. Brentjens RJ, Riviere I, Park JH, Davila ML, Wang X, Stefanski J, et al. Safety and persistence of adoptively transferred autologous CD19-targeted T cells in patients with relapsed or chemotherapy refractory B-cell leukemias. *Blood.* 2011;118(18):4817-28.
12. Grupp SA, Kalos M, Barrett D, Aplenc R, Porter DL, Rheingold SR, et al. Chimeric antigen receptor-modified T cells for acute lymphoid leukemia. *The New England journal of medicine.* 2013;368(16):1509-18.
13. McGranahan N, Furness AJ, Rosenthal R, Ramskov S, Lyngaa R, Saini SK, et al. Clonal neoantigens elicit T cell immunoreactivity and sensitivity to immune checkpoint blockade. *Science (New York, NY).* 2016;351(6280):1463-9.
14. Van Allen EM, Miao D, Schilling B, Shukla SA, Blank C, Zimmer L, et al. Genomic correlates of response to CTLA-4 blockade in metastatic melanoma. *Science (New York, NY).* 2015;350:207-11.

15. van Rooij N, van Buuren MM, Philips D, Velds A, Toebes M, Heemskerk B, et al. Tumor exome analysis reveals neoantigen-specific T-cell reactivity in an ipilimumab-responsive melanoma. *Journal of clinical oncology : official journal of the American Society of Clinical Oncology*. 2013;31(32):e439-42.
16. Snyder A, Makarov V, Merghoub T, Yuan J, Zaretsky JM, Desrichard A, et al. Genetic basis for clinical response to CTLA-4 blockade in melanoma. *The New England journal of medicine*. 2014;371(23):2189-99.
17. Le DT, Durham JN, Smith KN, Wang H, Bartlett BR, Aulakh LK, et al. Mismatch-repair deficiency predicts response of solid tumors to PD-1 blockade. *Science (New York, NY)*. 2017;357(6349):409-13.
18. Domingo E, Freeman-Mills L, Rayner E, Glaire M, Briggs S, Vermeulen L, et al. Somatic POLE proofreading domain mutation, immune response, and prognosis in colorectal cancer: a retrospective, pooled biomarker study. *The Lancet Gastroenterology & Hepatology*. 2016;1(3):207-16.
19. Eggink FA, Van Gool IC, Leary A, Pollock PM, Crosbie EJ, Mileshkin L, et al. Immunological profiling of molecularly classified high-risk endometrial cancers identifies POLE-mutant and microsatellite unstable carcinomas as candidates for checkpoint inhibition. *Oncoimmunology*. 2017;6(2):e1264565.
20. Yewdell JW, Reits E, Neefjes J. Making sense of mass destruction: quantitating MHC class I antigen presentation. *Nature reviews Immunology*. 2003;3(12):952-61.
21. Neefjes JJ, Momburg F, Hammerling GJ. Selective and ATP-dependent translocation of peptides by the MHC-encoded transporter. *Science (New York, NY)*. 1993;261(5122):769-71.
22. Wearsch PA, Cresswell P. The quality control of MHC class I peptide loading. *Current opinion in cell biology*. 2008;20(6):624-31.
23. Neefjes J, Jongmsa ML, Paul P, Bakke O. Towards a systems understanding of MHC class I and MHC class II antigen presentation. *Nature reviews Immunology*. 2011;11(12):823-36.
24. Kurts C, Robinson BW, Knolle PA. Cross-priming in health and disease. *Nature reviews Immunology*. 2010;10(6):403-14.
25. Steinman RM, Banchereau J. Taking dendritic cells into medicine. *Nature*. 2007;449:419.
26. van Vreeswijk H, Ruiter DJ, Brocker EB, Welvaart K, Ferrone S. Differential expression of HLA-DR, DQ, and DP antigens in primary and metastatic melanoma. *The Journal of investigative dermatology*. 1988;90(5):755-60.
27. Dengjel J, Nastke MD, Gouttefangeas C, Gitsioudis G, Schoor O, Altenberend F, et al. Unexpected abundance of HLA class II presented peptides in primary renal cell carcinomas. *Clinical cancer research : an official journal of the American Association for Cancer Research*. 2006;12(14 Pt 1):4163-70.
28. Ilyas S, Yang JC. Landscape of Tumor Antigens in T-Cell Immunotherapy. *Journal of immunology (Baltimore, Md : 1950)*. 2015;195(11):5117-22.
29. Takaba H, Takayanagi H. The Mechanisms of T Cell Selection in the Thymus. *Trends in immunology*. 2017;38(11):805-16.
30. Abbas AK, Lohr J, Knoechel B, Nagabhusanam V. T cell tolerance and autoimmunity. *Autoimmunity Reviews*. 2004;3(7):471-5.
31. Eisenberg G, Machlenkin A, Frankenburg S, Mansura A, Pitcovski J, Yefenof E, et al. Transcutaneous immunization with hydrophilic recombinant gp100 protein induces antigen-specific cellular immune response. *Cellular Immunology*. 2010;266(1):98-103.

32. Hunder NN, Wallen H, Cao J, Hendricks DW, Reilly JZ, Rodmyre R, et al. Treatment of metastatic melanoma with autologous CD4+ T cells against NY-ESO-1. *The New England journal of medicine*. 2008;358(25):2698-703.
33. Marchand M, van Baren N, Weynants P, Brichard V, Dreno B, Tessier MH, et al. Tumor regressions observed in patients with metastatic melanoma treated with an antigenic peptide encoded by gene MAGE-3 and presented by HLA-A1. *International journal of cancer*. 1999;80(2):219-30.
34. Skipper JC, Gulden PH, Hendrickson RC, Harthun N, Caldwell JA, Shabanowitz J, et al. Mass-spectrometric evaluation of HLA-A*0201-associated peptides identifies dominant naturally processed forms of CTL epitopes from MART-1 and gp100. *International journal of cancer*. 1999;82(5):669-77.
35. Sosman JA, Carrillo C, Urba WJ, Flaherty L, Atkins MB, Clark JI, et al. Three phase II cytokine working group trials of gp100 (210M) peptide plus high-dose interleukin-2 in patients with HLA-A2-positive advanced melanoma. *Journal of clinical oncology : official journal of the American Society of Clinical Oncology*. 2008;26(14):2292-8.
36. Tyagi P, Mirakhur B. MAGRIT: the largest-ever phase III lung cancer trial aims to establish a novel tumor-specific approach to therapy. *Clinical lung cancer*. 2009;10(5):371-4.
37. Linette GP, Stadtmauer EA, Maus MV, Rapoport AP, Levine BL, Emery L, et al. Cardiovascular toxicity and titin cross-reactivity of affinity-enhanced T cells in myeloma and melanoma. *Blood*. 2013;122(6):863-71.
38. Gilboa E. The makings of a tumor rejection antigen. *Immunity*. 1999;11(3):263-70.
39. Negrini S, Gorgoulis VG, Halazonetis TD. Genomic instability--an evolving hallmark of cancer. *Nature reviews Molecular cell biology*. 2010;11(3):220-8.
40. Fritsch EF, Rajasagi M, Ott PA, Brusica V, Hacohen N, Wu CJ. HLA-binding properties of tumor neoepitopes in humans. *Cancer immunology research*. 2014;2(6):522-9.
41. van Buuren MM, Calis JJ, Schumacher TN. High sensitivity of cancer exome-based CD8 T cell neo-antigen identification. *Oncoimmunology*. 2014;3:e28836.
42. Andreatta M, Nielsen M. Gapped sequence alignment using artificial neural networks: application to the MHC class I system. *Bioinformatics (Oxford, England)*. 2016;32(4):511-7.
43. Bassani-Sternberg M, Gfeller D. Unsupervised HLA Peptidome Deconvolution Improves Ligand Prediction Accuracy and Predicts Cooperative Effects in Peptide-HLA Interactions. *Journal of immunology (Baltimore, Md : 1950)*. 2016;197(6):2492-9.
44. Tappeiner E, Finotello F, Charoentong P, Mayer C, Rieder D, Trajanoski Z. TIminer: NGS data mining pipeline for cancer immunology and immunotherapy. *Bioinformatics (Oxford, England)*. 2017.
45. Tran E, Robbins PF, Lu Y-C, Prickett TD, Gartner JJ, Jia L, et al. T-Cell Transfer Therapy Targeting Mutant KRAS in Cancer. *New England Journal of Medicine*. 2016;375(23):2255-62.
46. Veatch JR, Lee SM, Fitzgibbon M, Chow IT, Jesernig B, Schmitt T, et al. Tumor-infiltrating BRAFV600E-specific CD4+ T cells correlated with complete clinical response in melanoma. *The Journal of clinical investigation*. 2018;128(4):1563-8.
47. Harbst K, Lauss M, Cirenajwis H, Isaksson K, Rosengren F, Tornngren T, et al. Multiregion Whole-Exome Sequencing Uncovers the Genetic Evolution and Mutational Heterogeneity of Early-Stage Metastatic Melanoma. *Cancer research*. 2016;76(16):4765-74.
48. Gerlinger M, Rowan AJ, Horswell S, Larkin J, Endesfelder D, Gronroos E, et al. Intratumor Heterogeneity and Branched Evolution Revealed by Multiregion Sequencing. *New England Journal of Medicine*. 2012;366(10):883-92.

49. Turajlic S, Litchfield K, Xu H, Rosenthal R, McGranahan N, Reading JL, et al. Insertion-and-deletion-derived tumour-specific neoantigens and the immunogenic phenotype: a pan-cancer analysis. *The Lancet Oncology*. 2017;18(8):1009-21.
50. Hodi FS, O'Day SJ, McDermott DF, Weber RW, Sosman JA, Haanen JB, et al. Improved survival with ipilimumab in patients with metastatic melanoma. *The New England journal of medicine*. 2010;363(8):711-23.
51. Larkin J, Hodi FS, Wolchok JD. Combined Nivolumab and Ipilimumab or Monotherapy in Untreated Melanoma. *The New England journal of medicine*. 2015;373(13):1270-1.
52. Brunet JF, Denizot F, Luciani MF, Roux-Dosseto M, Suzan M, Mattei MG, et al. A new member of the immunoglobulin superfamily--CTLA-4. *Nature*. 1987;328(6127):267-70.
53. Ishida Y, Agata Y, Shibahara K, Honjo T. Induced expression of PD-1, a novel member of the immunoglobulin gene superfamily, upon programmed cell death. *The EMBO journal*. 1992;11(11):3887-95.
54. Schwartz RH. T cell anergy. *Annual review of immunology*. 2003;21:305-34.
55. Schietinger A, Greenberg PD. Tolerance and exhaustion: defining mechanisms of T cell dysfunction. *Trends in Immunology*. 2014;35(2):51-60.
56. Kvistborg P, Philips D, Kelderman S, Hageman L, Ottensmeier C, Joseph-Pietras D, et al. Anti-CTLA-4 therapy broadens the melanoma-reactive CD8+ T cell response. *Science translational medicine*. 2014;6(254):254ra128.
57. Ribas A, Shin DS, Zaretsky J, Frederiksen J, Cornish A, Avramis E, et al. PD-1 blockade expands intratumoral T memory cells. *Cancer immunology research*. 2016;4(3):194-203.
58. Chow LQM, Haddad R, Gupta S, Mahipal A, Mehra R, Tahara M, et al. Antitumor Activity of Pembrolizumab in Biomarker-Unselected Patients With Recurrent and/or Metastatic Head and Neck Squamous Cell Carcinoma: Results From the Phase Ib KEYNOTE-012 Expansion Cohort. *Journal of clinical oncology : official journal of the American Society of Clinical Oncology*. 2016;34(32):3838-45.
59. Powles T, Eder JP, Fine GD, Braiteh FS, Loriot Y, Cruz C, et al. MPDL3280A (anti-PD-L1) treatment leads to clinical activity in metastatic bladder cancer. *Nature*. 2014;515(7528):558-62.
60. Brahmer JR, Tykodi SS, Chow LQ, Hwu WJ, Topalian SL, Hwu P, et al. Safety and activity of anti-PD-L1 antibody in patients with advanced cancer. *The New England journal of medicine*. 2012;366(26):2455-65.
61. Ansell SM, Lesokhin AM, Borrello I, Halwani A, Scott EC, Gutierrez M, et al. PD-1 Blockade with Nivolumab in Relapsed or Refractory Hodgkin's Lymphoma. *New England Journal of Medicine*. 2014;372(4):311-9.
62. Rizvi NA, Hellmann MD, Snyder A, Kvistborg P, Makarov V, Havel JJ, et al. Cancer immunology. Mutational landscape determines sensitivity to PD-1 blockade in non-small cell lung cancer. *Science (New York, NY)*. 2015;348(6230):124-8.
63. Mouw KW, Goldberg MS, Konstantinopoulos PA, D'Andrea AD. DNA Damage and Repair Biomarkers of Immunotherapy Response. *Cancer discovery*. 2017;7(7):675-93.
64. Nishino M, Ramaiya NH, Hatabu H, Hodi FS. Monitoring immune-checkpoint blockade: response evaluation and biomarker development. *Nature reviews Clinical oncology*. 2017;14(11):655-68.
65. Jongsma MLM, Guarda G, Spaapen RM. The regulatory network behind MHC class I expression. *Molecular immunology*. 2017.

66. Dierssen JW, de Miranda NF, Ferrone S, van Puijtenbroek M, Cornelisse CJ, Fleuren GJ, et al. HNPCC versus sporadic microsatellite-unstable colon cancers follow different routes toward loss of HLA class I expression. *BMC cancer*. 2007;7:33.
67. Rooney MS, Shukla SA, Wu CJ, Getz G, Hacohen N. Molecular and genetic properties of tumors associated with local immune cytolytic activity. *Cell*. 2015;160(1-2):48-61.
68. Sade-Feldman M, Jiao YJ, Chen JH, Rooney MS, Barzily-Rokni M, Eliane JP, et al. Resistance to checkpoint blockade therapy through inactivation of antigen presentation. *Nature communications*. 2017;8(1):1136.
69. Kloor M, Becker C, Benner A, Woerner SM, Gebert J, Ferrone S, et al. Immunoselective pressure and human leukocyte antigen class I antigen machinery defects in microsatellite unstable colorectal cancers. *Cancer research*. 2005;65(14):6418-24.
70. Gao J, Shi LZ, Zhao H, Chen J, Xiong L, He Q, et al. Loss of IFN-gamma Pathway Genes in Tumor Cells as a Mechanism of Resistance to Anti-CTLA-4 Therapy. *Cell*. 2016;167(2):397-404.e9.
71. Shin DS, Zaretsky JM, Escuin-Ordinas H, Garcia-Diaz A, Hu-Lieskovan S, Kalbasi A, et al. Primary Resistance to PD-1 Blockade Mediated by JAK1/2 Mutations. *Cancer discovery*. 2017;7(2):188-201.
72. Zaretsky JM, Garcia-Diaz A, Shin DS, Escuin-Ordinas H, Hugo W, Hu-Lieskovan S, et al. Mutations Associated with Acquired Resistance to PD-1 Blockade in Melanoma. *New England Journal of Medicine*. 2016;375(9):819-29.
73. Verdegaal EM, de Miranda NF, Visser M, Harryvan T, van Buuren MM, Andersen RS, et al. Neoantigen landscape dynamics during human melanoma-T cell interactions. *Nature*. 2016;536(7614):91-5.
74. Riaz N, Havel JJ, Makarov V, Desrichard A, Urba WJ, Sims JS, et al. Tumor and Microenvironment Evolution during Immunotherapy with Nivolumab. *Cell*. 2017;171(4):934-49.e15.
75. Tran E, Robbins PF, Rosenberg SA. 'Final common pathway' of human cancer immunotherapy: targeting random somatic mutations. *Nature immunology*. 2017;18(3):255-62.
76. Fridman WH, Zitvogel L, Sautes-Fridman C, Kroemer G. The immune contexture in cancer prognosis and treatment. *Nature reviews Clinical oncology*. 2017.
77. de Miranda NF, Goudkade D, Jordanova ES, Tops CM, Hes FJ, Vasen HF, et al. Infiltration of Lynch colorectal cancers by activated immune cells associates with early staging of the primary tumor and absence of lymph node metastases. *Clinical cancer research : an official journal of the American Association for Cancer Research*. 2012;18(5):1237-45.
78. Rosenberg SA, Packard BS, Aebbersold PM, Solomon D, Topalian SL, Toy ST, et al. Use of tumor-infiltrating lymphocytes and interleukin-2 in the immunotherapy of patients with metastatic melanoma. A preliminary report. *The New England journal of medicine*. 1988;319(25):1676-80.
79. Dudley ME, Wunderlich JR, Shelton TE, Even J, Rosenberg SA. Generation of tumor-infiltrating lymphocyte cultures for use in adoptive transfer therapy for melanoma patients. *Journal of immunotherapy (Hagerstown, Md : 1997)*. 2003;26(4):332-42.
80. Verdegaal EM, Visser M, Ramwadhoebe TH, van der Minne CE, van Steijn JA, Kapiteijn E, et al. Successful treatment of metastatic melanoma by adoptive transfer of blood-derived polyclonal tumor-specific CD4+ and CD8+ T cells in combination with low-dose interferon-alpha. *Cancer immunology, immunotherapy : CII*. 2011;60(7):953-63.
81. Rosenberg SA, Yang JC, Sherry RM, Kammula US, Hughes MS, Phan GQ, et al. Durable complete responses in heavily pretreated patients with metastatic melanoma using T-cell transfer immunotherapy. *Clinical cancer research : an official journal of the American Association for Cancer Research*. 2011;17(13):4550-7.

82. Tran E, Turcotte S, Gros A, Robbins PF, Lu YC, Dudley ME, et al. Cancer immunotherapy based on mutation-specific CD4+ T cells in a patient with epithelial cancer. *Science (New York, NY)*. 2014;344(6184):641-5.
83. Robbins PF, Lu YC, El-Gamil M, Li YF, Gross C, Gartner J, et al. Mining exomic sequencing data to identify mutated antigens recognized by adoptively transferred tumor-reactive T cells. *Nature medicine*. 2013;19(6):747-52.
84. Larkin J, Chiarion-Sileni V, Gonzalez R, Grob JJ, Cowey CL, Lao CD, et al. Combined Nivolumab and Ipilimumab or Monotherapy in Untreated Melanoma. *The New England journal of medicine*. 2015;373(1):23-34.
85. Postow MA, Chesney J, Pavlick AC, Robert C, Grossmann K, McDermott D, et al. Nivolumab and ipilimumab versus ipilimumab in untreated melanoma. *The New England journal of medicine*. 2015;372(21):2006-17.
86. Koyama S, Akbay EA, Li YY, Herter-Sprie GS, Buczkowski KA, Richards WG, et al. Adaptive resistance to therapeutic PD-1 blockade is associated with upregulation of alternative immune checkpoints. *Nature communications*. 2016;7:10501.
87. Houchins JP, Yabe T, McSherry C, Bach FH. DNA sequence analysis of NKG2, a family of related cDNA clones encoding type II integral membrane proteins on human natural killer cells. *The Journal of experimental medicine*. 1991;173(4):1017-20.
88. Hutloff A, Dittrich AM, Beier KC, Eljaschewitsch B, Kraft R, Anagnostopoulos I, et al. ICOS is an inducible T-cell co-stimulator structurally and functionally related to CD28. *Nature*. 1999;397(6716):263-6.
89. Monney L, Sabatos CA, Gaglia JL, Ryu A, Waldner H, Chernova T, et al. Th1-specific cell surface protein Tim-3 regulates macrophage activation and severity of an autoimmune disease. *Nature*. 2002;415:536.
90. Triebel F, Jitsukawa S, Baixeras E, Roman-Roman S, Genevee C, Viegas-Pequignot E, et al. LAG-3, a novel lymphocyte activation gene closely related to CD4. *The Journal of experimental medicine*. 1990;171(5):1393-405.
91. Weigelin B, Bolaños E, Rodriguez-Ruiz ME, Martinez-Forero I, Friedl P, Melero I. Anti-CD137 monoclonal antibodies and adoptive T cell therapy: a perfect marriage? *Cancer Immunology, Immunotherapy*. 2016;65(5):493-7.
92. Melero I, Shuford WW, Newby SA, Aruffo A, Ledbetter JA, Hellström KE, et al. Monoclonal antibodies against the 4-1BB T-cell activation molecule eradicate established tumors. *Nature medicine*. 1997;3:682.
93. Jure-Kunkel M, Masters G, Girit E, Dito G, Lee F, Hunt JT, et al. Synergy between chemotherapeutic agents and CTLA-4 blockade in preclinical tumor models. *Cancer immunology, immunotherapy : CII*. 2013;62(9):1533-45.
94. El Chediak A, Shamseddine A, Bodgi L, Obeid JP, Geara F, Zeidan YH. Optimizing tumor immune response through combination of radiation and immunotherapy. *Medical oncology (Northwood, London, England)*. 2017;34(9):165.
95. Hodge JW, Sabzevari H, Yafal AG, Gritz L, Lorenz MG, Schlom J. A triad of costimulatory molecules synergize to amplify T-cell activation. *Cancer research*. 1999;59(22):5800-7.
96. Melief CJM, van Hall T, Arens R, Ossendorp F, van der Burg SH. Therapeutic cancer vaccines. *The Journal of clinical investigation*. 2015;125(9):3401-12.
97. Lee S, Nguyen MT. Recent Advances of Vaccine Adjuvants for Infectious Diseases. *Immune Network*. 2015;15(2):51-7.

98. Coffman RL, Sher A, Seder RA. Vaccine Adjuvants: Putting Innate Immunity to Work. *Immunity*. 2010;33(4):492-503.
99. Ott PA, Hu Z, Keskin DB, Shukla SA, Sun J, Bozym DJ, et al. An immunogenic personal neo-antigen vaccine for patients with melanoma. *Nature*. 2017;547(7662):217-21.
100. Carreno BM, Magrini V, Becker-Hapak M, Kaabinejadian S, Hundal J, Petti AA, et al. Cancer immunotherapy. A dendritic cell vaccine increases the breadth and diversity of melanoma neoantigen-specific T cells. *Science (New York, NY)*. 2015;348(6236):803-8.
101. Vermeij R, Leffers N, van der Burg SH, Melief CJ, Daemen T, Nijman HW. Immunological and clinical effects of vaccines targeting p53-overexpressing malignancies. *Journal of biomedicine & biotechnology*. 2011;2011:702146.
102. Lee DW, Kochenderfer JN, Stetler-Stevenson M, Cui YK, Delbrook C, Feldman SA, et al. T cells expressing CD19 chimeric antigen receptors for acute lymphoblastic leukaemia in children and young adults: a phase 1 dose-escalation trial. *Lancet (London, England)*. 2015;385(9967):517-28.
103. Maude SL, Frey N, Shaw PA, Aplenc R, Barrett DM, Bunin NJ, et al. Chimeric antigen receptor T cells for sustained remissions in leukemia. *The New England journal of medicine*. 2014;371(16):1507-17.
104. Morgan RA, Yang JC, Kitano M, Dudley ME, Laurencot CM, Rosenberg SA. Case report of a serious adverse event following the administration of T cells transduced with a chimeric antigen receptor recognizing ERBB2. *Molecular therapy : the journal of the American Society of Gene Therapy*. 2010;18(4):843-51.
105. CAR-T death strikes Kite. *Nature Biotechnology*. 2017;35:492.
106. Park JH, Riviere I, Gonen M, Wang X, Senechal B, Curran KJ, et al. Long-Term Follow-up of CD19 CAR Therapy in Acute Lymphoblastic Leukemia. *The New England journal of medicine*. 2018;378(5):449-59.
107. Neelapu SS, Locke FL, Bartlett NL, Lekakis LJ, Miklos DB, Jacobson CA, et al. Axicabtagene Ciloleucel CAR T-Cell Therapy in Refractory Large B-Cell Lymphoma. *The New England journal of medicine*. 2017;377(26):2531-44.
108. Maude SL, Laetsch TW, Buechner J, Rives S, Boyer M, Bittencourt H, et al. Tisagenlecleucel in Children and Young Adults with B-Cell Lymphoblastic Leukemia. *New England Journal of Medicine*. 2018;378(5):439-48.
109. Tang XY, Sun Y, Zhang A, Hu GL, Cao W, Wang DH, et al. Third-generation CD28/4-1BB chimeric antigen receptor T cells for chemotherapy relapsed or refractory acute lymphoblastic leukaemia: a non-randomised, open-label phase I trial protocol. *BMJ open*. 2016;6(12):e013904.
110. Till BG, Jensen MC, Wang J, Qian X, Gopal AK, Maloney DG, et al. CD20-specific adoptive immunotherapy for lymphoma using a chimeric antigen receptor with both CD28 and 4-1BB domains: pilot clinical trial results. *Blood*. 2012;119(17):3940-50.
111. Zhong XS, Matsushita M, Plotkin J, Riviere I, Sadelain M. Chimeric antigen receptors combining 4-1BB and CD28 signaling domains augment PI3kinase/AKT/Bcl-XL activation and CD8+ T cell-mediated tumor eradication. *Molecular therapy : the journal of the American Society of Gene Therapy*. 2010;18(2):413-20.
112. Carpenito C, Milone MC, Hassan R, Simonet JC, Lakhai M, Suhoski MM, et al. Control of large, established tumor xenografts with genetically retargeted human T cells containing CD28 and CD137 domains. *Proceedings of the National Academy of Sciences of the United States of America*. 2009;106(9):3360-5.

113. Silva D, Mukherjee M, Srinivasan M, Dakhova O, Liu H, Grilley B, et al. Direct comparison of in vivo fate of second and third-generation CD19-specific chimeric antigen receptor (CAR)-T cells in patients with b cell non-hodgkin lymphoma (B-NHL): Reversal of toxicity from tonic signaling 2017. S9 p.
114. Caruana I, Savoldo B, Hoyos V, Weber G, Liu H, Kim ES, et al. Heparanase promotes tumor infiltration and antitumor activity of CAR-redirected T-lymphocytes. *Nature medicine*. 2015;21(5):524-9.
115. D'Aloia MM, Zizzari IG, Sacchetti B, Pierelli L, Alimandi M. CAR-T cells: the long and winding road to solid tumors. *Cell Death & Disease*. 2018;9(3):282.
116. Schumacher TN, Schreiber RD. Neoantigens in cancer immunotherapy. *Science (New York, NY)*. 2015;348(6230):69-74.
117. Folgiero V, Miele E, Carai A, Ferretti E, Alfano V, Po A, et al. IDO1 involvement in mTOR pathway: a molecular mechanism of resistance to mTOR targeting in medulloblastoma. *Oncotarget*. 2016;7(33):52900-11.
118. Munn DH, Mellor AL. IDO in the Tumor Microenvironment: Inflammation, Counter-Regulation, and Tolerance. *Trends in immunology*. 2016;37(3):193-207.
119. Zhang L, Gajewski TF, Kline J. PD-1/PD-L1 interactions inhibit antitumor immune responses in a murine acute myeloid leukemia model. *Blood*. 2009;114(8):1545-52.
120. Fukuno K, Hara T, Tsurumi H, Shibata Y, Mabuchi R, Nakamura N, et al. Expression of indoleamine 2,3-dioxygenase in leukemic cells indicates an unfavorable prognosis in acute myeloid leukemia patients with intermediate-risk cytogenetics. *Leukemia & lymphoma*. 2015;56(5):1398-405.
121. Mussa F, De Santo C, Abu-Dayyeh I, Booth S, Quek L, McEwen-Smith RM, et al. Acute myeloid leukemia creates an arginase-dependent immunosuppressive microenvironment. *Blood*. 2013;122(5):749-58.
122. Aldinucci D, Gloghini A, Pinto A, De Filippi R, Carbone A. The classical Hodgkin's lymphoma microenvironment and its role in promoting tumour growth and immune escape. *The Journal of pathology*. 2010;221(3):248-63.
123. Younes A, Santoro A, Shipp M, Zinzani PL, Timmerman JM, Ansell S, et al. Nivolumab for classical Hodgkin's lymphoma after failure of both autologous stem-cell transplantation and brentuximab vedotin: a multicentre, multicohort, single-arm phase 2 trial. *The Lancet Oncology*. 17(9):1283-94.
124. Fisher RI, Rosenberg SA, Fyfe G. Long-term survival update for high-dose recombinant interleukin-2 in patients with renal cell carcinoma. *The cancer journal from Scientific American*. 2000;6 Suppl 1:S55-7.
125. Motzer RJ, Escudier B, McDermott DF, George S, Hammers HJ, Srinivas S, et al. Nivolumab versus Everolimus in Advanced Renal-Cell Carcinoma. *The New England journal of medicine*. 2015;373(19):1803-13.
126. Becht E, Giraldo NA, Beuselinc B, Job S, Marisa L, Vano Y, et al. Prognostic and theranostic impact of molecular subtypes and immune classifications in renal cell cancer (RCC) and colorectal cancer (CRC). *Oncoimmunology*. 2015;4(12):e1049804.
127. Tran E, Ahmadzadeh M, Lu Y-C, Gros A, Turcotte S, Robbins PF, et al. Immunogenicity of somatic mutations in human gastrointestinal cancers. *Science (New York, NY)*. 2015;350:1387-90.
128. Verdegaal EME, van der Burg SH. The Potential and Challenges of Exploiting the Vast But Dynamic Neoepitope Landscape for Immunotherapy. *Frontiers in Immunology*. 2017;8(1113).

129. Vincent J, Mignot G, Chalmin F, Ladoire S, Bruchard M, Chevriaux A, et al. 5-Fluorouracil selectively kills tumor-associated myeloid-derived suppressor cells resulting in enhanced T cell-dependent antitumor immunity. *Cancer research*. 2010;70(8):3052-61.
130. Aboudaram A, Modesto A, Chaltiel L, Gomez-Roca C, Boulinguez S, Sibaud V, et al. Concurrent radiotherapy for patients with metastatic melanoma and receiving anti-programmed-death 1 therapy: a safe and effective combination. *Melanoma research*. 2017;27(5):485-91.
131. Haanen JBAG. Converting Cold into Hot Tumors by Combining Immunotherapies. *Cell*. 2017;170(6):1055-6.
132. Giannakis M, Mu Xinmeng J, Shukla Sachet A, Qian Zhi R, Cohen O, Nishihara R, et al. Genomic Correlates of Immune-Cell Infiltrates in Colorectal Carcinoma. *Cell Reports*. 2016;15(4):857-65.
133. Hernandez C, Huebener P, Schwabe RF. Damage-associated molecular patterns in cancer: A double-edged sword. *Oncogene*. 2016;35(46):5931-41.
134. Hou W, Zhang Q, Yan Z, Chen R, Zeh lli HJ, Kang R, et al. Strange attractors: DAMPs and autophagy link tumor cell death and immunity. *Cell Death & Disease*. 2013;4:e966.
135. Fu J, Kanne DB, Leong M, Glickman LH, McWhirter SM, Lemmens E, et al. STING agonist formulated cancer vaccines can cure established tumors resistant to PD-1 blockade. *Science translational medicine*. 2015;7(283):283ra52.
136. Deng L, Liang H, Xu M, Yang X, Burnette B, Arina A, et al. STING-dependent Cytosolic DNA Sensing Promotes Radiation-induced Type I interferon-dependent Antitumor Immunity in Immunogenic Tumors. *Immunity*. 2014;41(5):843-52.
137. Lutsiak ME, Semnani RT, De Pascalis R, Kashmiri SV, Schlom J, Sabzevari H. Inhibition of CD4(+)25+ T regulatory cell function implicated in enhanced immune response by low-dose cyclophosphamide. *Blood*. 2005;105(7):2862-8.
138. Beyer M, Kochanek M, Darabi K, Popov A, Jensen M, Endl E, et al. Reduced frequencies and suppressive function of CD4+CD25hi regulatory T cells in patients with chronic lymphocytic leukemia after therapy with fludarabine. *Blood*. 2005;106(6):2018-25.
139. Reits EA, Hodge JW, Herberts CA, Groothuis TA, Chakraborty M, K.Wansley E, et al. Radiation modulates the peptide repertoire, enhances MHC class I expression, and induces successful antitumor immunotherapy. *The Journal of experimental medicine*. 2006;203(5):1259-71.
140. Hiniker SM, Chen DS, Reddy S, Chang DT, Jones JC, Mollick JA, et al. A Systemic Complete Response of Metastatic Melanoma to Local Radiation and Immunotherapy. *Translational Oncology*. 2012;5(6):404-7.
141. Golden EB, Demaria S, Schiff PB, Chachoua A, Formenti SC. An Abscopal Response to Radiation and Ipilimumab in a Patient with Metastatic Non-Small Cell Lung Cancer. *Cancer immunology research*. 2013;1:365-72.
142. Weintraub K. Take two: Combining immunotherapy with epigenetic drugs to tackle cancer. *Nature medicine*. 2016;22(1):8-10.
143. Nie Y, Yang G-y, Song Y, Zhao X, So C, Liao J, et al. DNA hypermethylation is a mechanism for loss of expression of the HLA class I genes in human esophageal squamous cell carcinomas. *Carcinogenesis*. 2001;22(10):1615-23.
144. Alfonso S, Silvia T, Ilaria L, Rosa M, Catia T, Francisco RC, et al. Rexpression of HLA class I antigens and restoration of antigen-specific CTL response in melanoma cells following 5-aza-2'-deoxycytidine treatment. *International journal of cancer*. 2001;94(2):243-51.

145. Dunn J, Rao S. Epigenetics and immunotherapy: The current state of play. *Molecular immunology*. 2017;87:227-39.
146. Peng D, Kryczek I, Nagarsheth N, Zhao L, Wei S, Wang W, et al. Epigenetic silencing of TH1-type chemokines shapes tumour immunity and immunotherapy. *Nature*. 2015;527(7577):249-53.
147. Roulois D, Loo Yau H, Singhania R, Wang Y, Danesh A, Shen Shu Y, et al. DNA-Demethylating Agents Target Colorectal Cancer Cells by Inducing Viral Mimicry by Endogenous Transcripts. *Cell*. 2015;162(5):961-73.
148. Liu BL, Robinson M, Han ZQ, Branston RH, English C, Reay P, et al. ICP34.5 deleted herpes simplex virus with enhanced oncolytic, immune stimulating, and anti-tumour properties. *Gene Therapy*. 2003;10:292.
149. Ribas A, Dummer R, Puzanov I, VanderWalde A, Andtbacka RHI, Michielin O, et al. Oncolytic Virotherapy Promotes Intratumoral T Cell Infiltration and Improves Anti-PD-1 Immunotherapy. *Cell*. 2017;170(6):1109-19.e10.

