



Universiteit
Leiden

The Netherlands

**Automated spike and seizure detection: Can we use it?
Using automated spike and seizure detection when
reviewing prolonged EEGs at the Epilepsy Monitoring Unit**
Reus, E.E.M.

Citation

Reus, E. E. M. (2024, January 30). *Automated spike and seizure detection: Can we use it?: Using automated spike and seizure detection when reviewing prolonged EEGs at the Epilepsy Monitoring Unit*. Retrieved from <https://hdl.handle.net/1887/3715500>

Version: Publisher's Version

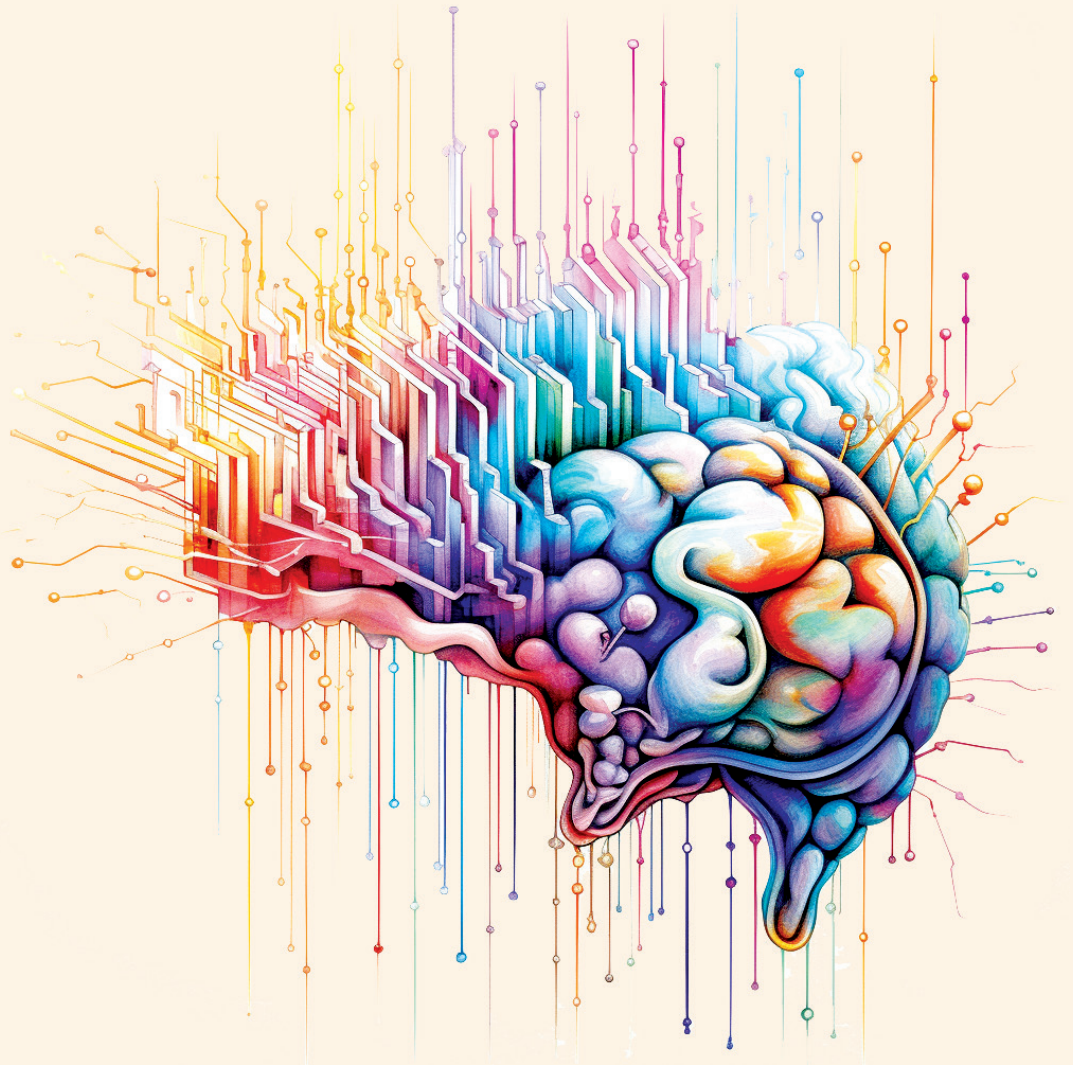
License: [Licence agreement concerning inclusion of doctoral thesis in the Institutional Repository of the University of Leiden](#)

Downloaded from: <https://hdl.handle.net/1887/3715500>

Note: To cite this publication please use the final published version (if applicable).

Automated spike and seizure detection: Can we use it?

*Using automated spike and seizure detection
when reviewing prolonged EEGs at the Epilepsy Monitoring Unit*



Elisabeth (Elise) E.M. Reus

