



Universiteit  
Leiden  
The Netherlands

## **Resilient functioning is associated with altered structural brain network topology in adolescents exposed to childhood adversity**

González-García, N.; Buimer, E.E.; Moreno-López, L.; Sallie, S.N.; Váša, F.; Lim, S.; ... ; Harmelen, A. van

### **Citation**




González-García, N., Buimer, E. E., Moreno-López, L., Sallie, S. N., Váša, F., Lim, S., ... Harmelen, A. van. (2023). Resilient functioning is associated with altered structural brain network topology in adolescents exposed to childhood adversity. *Development And Psychopathology*, 1--11. doi:10.1017/s0954579423000901

Version: Publisher's Version  
License: [Creative Commons CC BY-NC-ND 4.0 license](#)  
Downloaded from: <https://hdl.handle.net/1887/3714591>

**Note:** To cite this publication please use the final published version (if applicable).

## Special Issue Article

# Resilient functioning is associated with altered structural brain network topology in adolescents exposed to childhood adversity

Nadia González-García<sup>1,2</sup>, Elizabeth E.L. Buimer<sup>3</sup> , Laura Moreno-López<sup>1</sup> , Samantha N. Sallie<sup>1</sup>, František Váša<sup>4</sup>, Sol Lim<sup>5</sup>, Rafael Romero-García<sup>1,6</sup>, Maximilian Scheuplein<sup>3</sup>, Kirstie J. Whitaker<sup>1</sup>, Peter B. Jones<sup>1</sup>, Raymond J. Dolan<sup>7</sup>, NSPN consortium<sup>1,7</sup>, Peter Fonagy<sup>8</sup> , Ian Goodyer<sup>1</sup>, Edward T. Bullmore<sup>1</sup> and Anne-Laura van Harmelen<sup>1,3</sup>

<sup>1</sup>Department of Psychiatry, University of Cambridge, Cambridge, UK, <sup>2</sup>Laboratory of Neurosciences, Hospital Infantil de México Federico Gómez, México City, Mexico, <sup>3</sup>Institute of Education and Child Studies, Leiden University, Leiden, The Netherlands, <sup>4</sup>Department of Neuroimaging, Institute of Psychiatry, Psychology & Neuroscience, King's College London, London, UK, <sup>5</sup>Public health and Primary Care, Cardiovascular Epidemiology Unit (CEU), University of Cambridge, Cambridge, UK, <sup>6</sup>Dpto. de Fisiología Médica y Biofísica. Instituto de Biomedicina de Sevilla (IBiS) HUVR/CSIC/Universidad de Sevilla, Sevilla, Spain, <sup>7</sup>Wellcome Trust Center for Neuroimaging, University College London, London, UK and <sup>8</sup>Department of Clinical, Educational and Health Psychology, University College London, London, UK

## Abstract

Childhood adversity is one of the strongest predictors of adolescent mental illness. Therefore, it is critical that the mechanisms that aid resilient functioning in individuals exposed to childhood adversity are better understood. Here, we examined whether resilient functioning was related to structural brain network topology. We quantified resilient functioning at the individual level as psychosocial functioning adjusted for the severity of childhood adversity in a large sample of adolescents ( $N = 2406$ , aged 14–24). Next, we examined nodal degree (the number of connections that brain regions have in a network) using brain-wide cortical thickness measures in a representative subset ( $N = 275$ ) using a sliding window approach. We found that higher resilient functioning was associated with lower nodal degree of multiple regions including the dorsolateral prefrontal cortex, the medial prefrontal cortex, and the posterior superior temporal sulcus ( $z > 1.645$ ). During adolescence, decreases in nodal degree are thought to reflect a normative developmental process that is part of the extensive remodeling of structural brain network topology. Prior findings in this sample showed that decreased nodal degree was associated with age, as such our findings of negative associations between nodal degree and resilient functioning may therefore potentially resemble a more mature structural network configuration in individuals with higher resilient functioning.

**Keywords:** resilience; childhood adversity; brain networks; structural covariance; adolescence

(Received 14 April 2023; revised 1 July 2023; accepted 4 July 2023)

## Introduction

Childhood adversity (CA) refers to a range of negative experiences throughout childhood and adolescence such as parental psychopathology, peer victimization, and various forms of parental maltreatment (e.g., neglect or overt maltreatment). CA experiences are one of the strongest predictors of mental health problems (Green et al., 2010), possibly through their impact on the developing brain. According to the social transactional model of psychiatric vulnerability (McCrorry et al., 2022), CA experiences

shape fronto-limbic development and related socio-emotional functioning to aid survival in high-threat environments. For instance, in the context of an abusive home-environment, it may be adaptive for a child to rapidly detect when a parent is angry, to expect negative feedback, and to adjust their behavior and emotions accordingly. However, in nonthreatening social environments such socio-emotional functioning adaptations may inadvertently evoke social problems and generate social stress, and ultimately lead to mental health problems in later life (McCrorry et al., 2022).

Fortunately, not all individuals who have experienced CA develop mental illness; rather, a substantial proportion of individuals exposed to CA function resiliently later in life. Resilience refers to the capacity of a system (e.g., a brain, a child, a family, a community) to successfully adapt to challenges that threaten the function, survival, or development of that system (Masten et al., 2021; Masten & Monn, 2015). Resilience in the context of CA, when the stressor has already taken place, refers to an outcome of positive mental health *functioning* on a given

**Corresponding author:** Anne-Laura van Harmelen; Email: [a.van.harmelen@fsw.leidenuniv.nl](mailto:a.van.harmelen@fsw.leidenuniv.nl)

NGG and EELB shared first authorship.

NSPN author list: <https://nspn.org.uk/nspn-team/>

**Cite this article:** González-García, N., Buimer, E. E. L., Moreno-López, L., Sallie, S. N., Váša, F., Lim, S., Romero-García, R., Scheuplein, M., Whitaker, K. J., Jones, P. B., Dolan, R. J., NSPN consortium, Fonagy, P., Goodyer, I., Bullmore, E. T., & van Harmelen, A.-L. (2023). Resilient functioning is associated with altered structural brain network topology in adolescents exposed to childhood adversity. *Development and Psychopathology*, 1–11, <https://doi.org/10.1017/S0954579423000901>

© The Author(s), 2023. Published by Cambridge University Press. This is an Open Access article, distributed under the terms of the Creative Commons Attribution-NonCommercial-NoDerivatives licence (<http://creativecommons.org/licenses/by-nc-nd/4.0/>), which permits non-commercial re-use, distribution, and reproduction in any medium, provided that no alterations are made and the original article is properly cited. The written permission of Cambridge University Press must be obtained prior to any commercial use and/or adaptation of the article.

trajectory or at a given point in time. Such resilient functioning should be assessed across mental health domains, given the nonspecific negative impact of CA (Masten & Monn, 2015), and should be better than others with similar severity of CA experiences (van Harmelen *et al.*, 2017). Resilient functioning in individuals exposed to CA is aided by an array of separate yet interrelated protective social and cognitive influences such as positive parenting, and social support, high self-esteem, low rumination (Fritz *et al.*, 2018; Kalisch *et al.*, 2017, 2019; van Harmelen *et al.*, 2017, 2021). Furthermore, it is thought that these socio-cognitive protective factors interact with brain structure and functioning (Ioannidis *et al.*, 2020). Recent reviews of the literature suggest that resilient functioning may be facilitated by larger hippocampal structure and increased functional connectivity between limbic regions and the central executive network (CEN) (Moreno-López *et al.*, 2020). Although these studies provide important insights about the neurobiology that may aid resilient functioning, recent advances in neuroscience indicate that cognitive and emotional processes are not merely facilitated by specific regions but emerge through the interaction of brain networks (Krendl & Betzel, 2022).

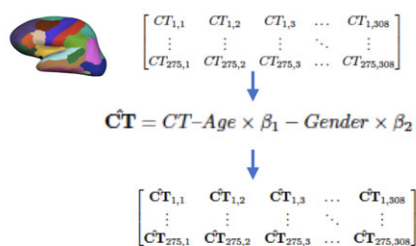
Brain networks can be constructed from structural or functional neuroimaging data (Krendl & Betzel, 2022). Structural covariance networks are thought to overlap with functional networks (Zielinski *et al.*, 2010), and can be examined using graph theoretical approaches, such as structural covariance (Bullmore & Bassett, 2011; Kaiser, 2011; Rubinov & Sporns, 2010). Structural covariance reflects the interindividual (Alexander-Bloch *et al.*, 2013; Vijayakumar *et al.*, 2021) or intra-individual (Seidlitz *et al.*, 2018; Yun *et al.*, 2016) covariation in brain morphology (for example cortical thickness) between different regions (nodes). Importantly, interindividual structural covariance may reflect coordinated brain development (Alexander-Bloch *et al.*, 2013; Khundrakpam *et al.*, 2013; Vijayakumar *et al.*, 2021). During puberty and adolescence, the cerebral cortex becomes thinner (Wierenga *et al.*, 2014) and white matter tracts become more densely myelinated (Miller *et al.*, 2012) suggesting a progressive refinement of neural connections through ongoing neural regressive events such as pruning (Kaiser, 2011; Alexander-Bloch *et al.*, 2013; Miller *et al.*, 2012; Zielinski *et al.*, 2010). The transition from childhood to adolescence is characterized by global increases in structural covariance of cortical thickness followed by reductions into mid-adolescence (Vijayakumar *et al.*, 2018). Structural covariance continues to decrease through late adolescence before plateauing in the early twenties, which corresponds to the prolonged maturation of association cortices (Váša *et al.*, 2018). The associated developmental changes in structural covariance during later adolescence, such as cortical thinning, have been related to reductions in nodal degree, the number of connections that brain regions have in a network (Váša *et al.*, 2018). Such development is thought to be shaped by genetic as well as environmental influences (Whitaker *et al.*, 2016).

Reviews on the neurobiology of resilience show an overall lack of consistent findings which could be the result of different conceptualizations of resilience (Eaton *et al.*, 2022; Zhang *et al.*, 2023; Leal & Silvers, 2021). In general, reviews point to neural circuits involved in emotion regulation and reward (Eaton *et al.*, 2022; Leal & Silvers, 2021), fronto-subcortical networks (Zhang *et al.*, 2023) and the emotional brain (Moreno-López *et al.*, 2020). To date, only a few studies have investigated the relationship between resilience in individuals exposed to CA and structural brain networks (reviewed in Moreno-López *et al.*, 2020). Ohashi *et al.* (2019) found reduced nodal efficiency in resilient individuals

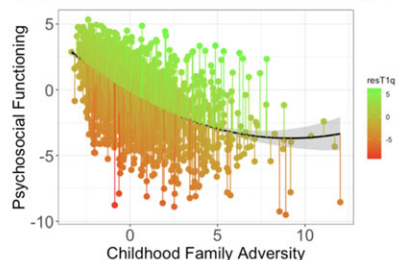
in the amygdala and 8 other nodes compared to susceptible individuals exposed to CA using diffusion tensor imaging and tractography. Comparing groups of non-maltreated youth, maltreated youth with PTSD and maltreated youth without PTSD, Sun *et al.* (2019) found larger centrality (importance of a region within a network) in the right frontal pole in maltreated youth without PTSD symptomatology compared to non-maltreated youth and maltreated youth with PTSD based on a structural covariance derived from cortical thickness estimates. The frontal pole plays a role in adapting and updating reward processing models in response to the environment (Kovach *et al.*, 2012). In a study with a similar design, maltreated youth without PTSD (versus with PTSD) showed larger centrality in right orbitofrontal cortex (Sun *et al.*, 2018), a region critical for evaluation, affect regulation and reward-based decision-making (Fettes *et al.*, 2017). Thus, resilient functioning in individuals exposed to CA is likely related to altered structural covariance patterns. However, these studies estimated resilience at the group-level, and were not able to relate the findings to individual level of resilient functioning, limiting the generalizability of these findings.

Hence, little is known about the structural network topology related to the level of resilient functioning in individuals exposed to CA, particularly in young people when the brain is in development. In doing so, appropriate quantification of resilient functioning after CA must keep in mind the following aspects. Firstly, given the negative impact of CA on a range of mental health and well-being outcomes, it is important that resilient functioning incorporates functioning across these psychological and social ("psychosocial") domains of functioning (Masten & Monn, 2015). Such resilient functioning across domains should further take into account what someone has experienced, as individuals with similar psychosocial functioning may differ in their degree of resilient functioning when one has experienced more severe CA than the other. Finally, as CA is a highly clustered experience, where different types of adversity often co-occur, it is important to take all CA experiences into account when examining CA. To do so, we build on previous work (Ioannidis *et al.*, 2020; van Harmelen *et al.*, 2017, 2021) and use data reduction techniques (principal component analyses) to derive a single estimate for psychosocial functioning that summarizes low to high functioning across multiple measurements, and use the same approach to calculate a single estimate that summarizes the severity of all experiences of childhood family adversity (CFA) in a community cohort of healthy young people with low to moderate CFA ( $N = 2406$ , aged 14–24). Next, we regressed the estimate for CA onto the estimate for psychosocial functioning. In doing so, individual-level resilient functioning can then be inferred from the residuals of the relation between CA and psychosocial functioning - the extent to which an individual is functioning better than expected given their CA experiences (implying resilient functioning, green lines) or worse than expected (implying vulnerable functioning, red lines) (Figure 1b, see Ioannidis *et al.*, 2020; van Harmelen *et al.*, 2017, 2021). The aim of this study is to examine whether such resilient functioning in young people exposed to CFA is associated with altered structural network topology. To do so, we use a sliding window method (See Figure 1c); a novel approach so far only used to estimate the structural network topology of neurodevelopmental trajectories (Alexander-Bloch *et al.*, 2013; Ohashi *et al.*, 2019). Here, we use the sliding window method to be able to use resilient functioning as a continuous measure and test for robustness of its association with nodal degree by repeating the structural covariance analyses across different subsamples. By altering the window width and step size

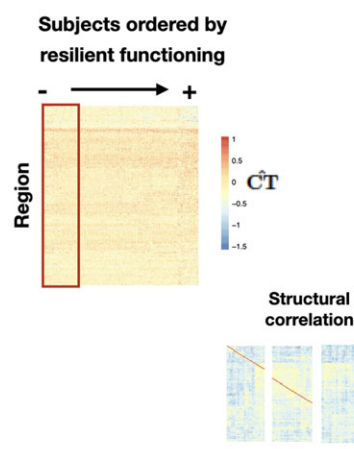
## (a) Create covariance matrix of cortical thickness estimates



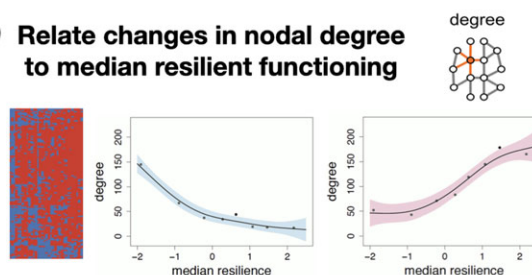
## (b) Compute resilient functioning scores



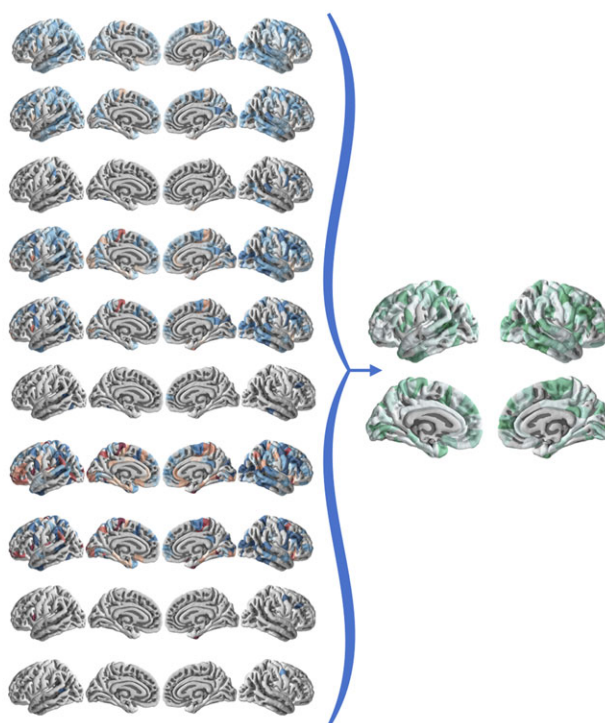
## (c) Sliding window method



## (d) Relate changes in nodal degree to median resilient functioning



## (e) Create convergence index for thresholding



**Figure 1.** Study design A) A covariance matrix of the cortical thickness (CT) measures for 308 parcellations in 275 participants is created. Next, the data matrix is substituted by the residuals of the linear regression to remove variation related to age, gender, and intra-cranial volume. B) Next, resilient functioning scores are created based on the NSPN sample ( $N = 2406$ ). The figure shows the extent to which an individual functioned better than expected ("high, or resilient;" green lines), or worse than expected ("low or risk" red lines), than others with similar childhood family adversity experiences. Note that higher residual scores reflect more resilient functioning, and that both  $X$  and  $Y$  axes represent factor scores with Mean = 0 and SD = 1. C) Next, a sliding window method was applied with varying window sizes (red box), to assess how resilient functioning was related to changes in the nodal degree of the network overlapping structural networks of 275 participants. CT values of each region were cross correlated with windows containing the same numbers, we used bootstrapping to threshold the network. D) Then, we evaluated linear regional changes in node degree as a function of the median resilient functioning. E) We varied these parameters to explore consistency in the results using a "Convergence Index," considering all nine combinations of window widths (40, 60, 80) and step sizes (5, 10, 20), plus one further combination of  $ww = 60$  and  $ss = 30$ . Convergence indices were calculated for each of the brain parcellations, where the index represents the number of times the region is associated with resilient functioning for each of the above combinations. Thus, a convergence index of 10 indicates that the region was associated with resilient functioning every run and a convergence index of 0 indicates that it was never associated.

with each iteration, our findings get independent of the parameters used for the sliding window method. Given the importance of socio-emotional functioning in mental health vulnerability in adolescents and adults exposed to CA (McCrorry et al., 2022; Moreno-López et al., 2020), we hypothesized that higher level of resilient functioning would be associated with changes in nodal degree of cortical brain regions that help guide socio-emotional functioning. Building on previous work in this sample (Váša et al., 2018; Whitaker et al., 2016), we chose to

investigate nodal degree in structural covariance networks derived from cortical thickness estimates since this measure was shown to decrease with age in adolescence, and this decrease was associated with corresponding myelination changes in the association cortices (Váša et al., 2018). Furthermore, we focused on CFA rather than the broader CA as our available data contains questionnaires that focus on the family environment. Data on other experiences of CA, such as bullying, racism, or poverty, were not included here.

## Methods

### Study design and participants

Participants were part of the Neuroscience in Psychiatry Network (NSPN) study: a multi-center accelerated longitudinal community cohort study focusing on normative adolescent to young adult development between the ages 14–24. The NSPN cohort ( $N = 2406$ ) was recruited from schools, colleges, National Health Service primary care services, and direct advertisement in north London and Cambridgeshire. Maintaining the same gender and ethnicity balance as in the main sample, 301 participants were invited for an MRI scan (Whitaker et al., 2016). For this manuscript, we excluded those individuals with a lifetime history of brain damage, epilepsy, genetic syndromes, and premature birth ( $N = 26$ ), leaving a total sample of 275 individuals for the analyses of brain imaging data below.

The inclusion criteria for the MRI subset were that the participants should be aged between 14 and 24 years; able to understand written and spoken English; have normal or corrected-to-normal vision; and able to give informed consent for participation in the study. The exclusion criteria were current treatment for psychiatric disorders, drug dependence, alcohol dependence, current or previous neurological disorders, brain trauma including epilepsy, head injury causing loss of consciousness, learning disability requiring specialist educational support and/or medical treatment, and standard MRI contraindications. Individuals with previous or lifelong psychiatric disorders were not excluded, except if they were in current treatment for these disorders. The study was approved by the Cambridgeshire and Peterborough Foundation Trust and the University of Cambridge research ethics committees (REF 12/EE/0250). All participants (and their caregivers) were briefed about the study aims and protocols and signed an informed consent form.

### Acquired data

To assess resilient functioning, we relied on data from questionnaires on psychological functioning, CFA, socio-demographic status, family and educational or occupational environments, and subclinical psychopathology in the NSPN sample ( $N = 2406$ ). Assessments for the MRI sub study ( $N = 275$ ) further included a day of clinical, cognitive, and MRI assessments at the University of Cambridge or University College London sites.

### Measures of psychosocial functioning

Psychosocial functioning was based on *all* measures included in the NSPN home questionnaire pack that assessed any aspect of psychological and social functioning. This included measures of psychiatric symptomatology, personality traits, and mental well-being. Below we provide an overview of the specific measures used, please refer to van Harmelen et al. (2017) and Supplementary material for a description of the measures. Psychosocial functioning was assessed with sum scores from the Mood and Feelings Questionnaire (MFQ; [Angold et al., 1996]), Revised Children's Manifest Anxiety Scale (RCMAS; [Reynolds & Richmond, 1997]), Short Leyton Obsessional Inventory (S-LOI; [Bamber et al., 2002]), Child Behavior Checklist (CBCL; [Achenbach, 1991]) and Kessler Psychological Distress Scale (K10; [Kessler et al., 2002]), the Adolescent Psychopathy Screening Device (APSD; [Frick et al., 2000]), Child and Adolescent Dispositions Scale (CADS; [Lahey et al., 2008]), the Inventory of Callous-Unemotional Traits (ICU; [Roose et al., 2010]), Schizotypal Personality Questionnaire (SPQ;

[Raine, 1991]), and the Barratt Impulsiveness Scale (BIS-11; [Stanford et al., 2009]), and the Warwick-Edinburgh Mental Well-being Scale (WEMWBS; [Tennant et al., 2007]).

### Measures of childhood family adversity

Childhood Family Adversity (CFA) scores included *all* measures in the NSPN home questionnaire pack that assessed any aspect of the home environment whilst growing up. As such, CFA within the family environment was assessed with the Alabama Parenting Questionnaire (APQ; [Elgar et al., 2007]) and the Measure of Parental Style (MOPS; [Parker et al., 1997]). The types of experiences assessed with the APQ and MOPS include parental abuse and neglect, and more general parenting behaviors (i.e., positive parenting, inconsistency, indifference, and control). Please refer to van Harmelen et al. (2017) and Supplementary material for a description of the measures.

### MRI acquisition

Participants underwent structural MRI (3T) using the multi-parameter mapping (MPM) sequence (Weiskopf et al., 2013) in Cambridge (two sites) or London. All sites used identical scanners (Siemens Magnetom Tim Trio), sequences, and protocols. The setup, acquisition, and post-processing have been previously described (Weiskopf et al., 2013). Briefly, the MPM protocol includes three multi-echo 3D FLASH (fast low-angle shot) scans, one radiofrequency (RF) transmit field map, and one static magnetic (B0) field map scan. Multiple gradient echoes were acquired with alternating readout polarity at six equidistant echo times between 2.2 and 14.7 ms for both acquisitions. Other acquisition parameters were: 1 mm isotropic resolution, 176 sagittal partitions, field of view =  $256 \times 240$  mm, matrix =  $256 \times 240 \times 176$ , parallel imaging using GRAPPA factor 2 in phase-encoding direction (AP), 6/8 partial Fourier in partition direction, nonselective RF excitation, readout bandwidth  $BW = 425$  Hz/pixel, RF spoiling phase increment =  $50^\circ$ . The total acquisition time was  $\sim 25$  min. Participants were instructed to lie still and rest during the scan.

### MRI processing

MR images were processed using the Freesurfer pipeline (v5.3.0), including skull-stripping, and segmentation of cortical gray and white matter (Fischl et al., 2002). After quality control, three participants were excluded from further analysis because of movement artifacts, which prevented accurate surface reconstructions and reconstruction of the cortical surface and gray-white matter boundary (for more detail see Whitaker et al., [2016]). Parcellation of cortical gray matter regions was based on the anatomical borders of 308 equally sized regions (159 in each hemisphere) of  $500 \text{ mm}^2$  that were constrained by the anatomical boundaries according to the Desikan-Killiany atlas (Desikan et al., 2006). We opted to use this particular atlas because it comprises an optimal spatial scale for graph theory analysis (Romero-Garcia et al., 2012). Average CT was extracted for each of the 308 regions in each participant.

### Analyses

#### Missing data handling

All analyses were conducted using R version 3.4.1 "Single Candle" of the Lavaan package (Rosseel, 2012). From the NSPN cohort ( $N = 2406$ ), all behavioral measures were complete for 1907 participants. The subset with no missing data did not differ from

the larger sample in terms of age ( $t(4091) = -0.027, p = 0.97$ ), gender ( $\chi^2 = 0.01, df = 1, p = 0.92$ ), socioeconomic status (SES; index of multiple deprivation based on participant postcodes;  $t(4038) = -1.29, p = 0.19$ ), or ethnicity ( $\chi^2 = 3.65, df = 5, p = 0.60$ ). Thus, missing data on the measures used in the below analyses were imputed using the Amelia package in R (Honaker et al., 2011). We calculated resilient functioning scores (as per the below description) within all 5 imputed datasets. These resilient functioning scores were highly correlated ( $r$ 's  $> 0.9$ , see supplemental Table S1 for specifics). Therefore, for this manuscript, we used the resilient functioning scores that were calculated using data from the first imputation sample.

### Resilient functioning scores

Following the procedure detailed in van Harmelen et al. (2017), we estimated resilient functioning using the "residual method" on the imputed dataset for the NSPN cohort ( $N = 2406$ ). Please refer to Ioannidis et al. (2020) for a detailed discussion of the benefits and drawbacks of this approach to quantify resilient functioning, and Cahill et al. (2022) for external validation of this approach which has shown good psychometric properties. Using this method we previously showed that adolescent friendships predict resilient functioning in two large independent samples; the  $N = 2406$  NSPN sample (van Harmelen et al., 2017), and in the  $N = 1238$  Roots sample (van Harmelen et al., 2021). We used principal component analysis (PCA) to compute individual psychosocial functioning scores using standard-normally transformed individual total scores across a range of measures (see Table 1; MFQ, RCMAS, S-LOI, K10, CBCL, APSD, CADS, ICU, SPQ, BIS-11, and WEMWBS). We also utilized PCA to calculate individual levels of CFA severity using standard-normally transformed sum scores for the MOPS and the APQ subscales (see Table 1) within the entire NSPN sample ( $N = 2409$ ). Resulting CFA factor scores were regressed onto the psychosocial functioning factor scores, and the best fitting regression model (in this case, quadratic) was obtained. The residuals from this model reflect how much better or worse individuals are functioning when compared to others with similar CFA scores. As such, these residual scores can be interpreted as a proxy to indicate individual degree of "vulnerable to resilient" functioning (from here, for brevity we refer to this as "resilient functioning"), with higher scores reflecting better psychosocial functioning relative to the level of CFA. Next, individual resilient functioning scores were extracted for the MRI cohort ( $N = 275$ ) and utilized in subsequent analyses.

### Structural covariance

To estimate each structural network, we used Pearson's correlation coefficients on the cortical thickness (CT) values estimated from Freesurfer based on structural MRI. Cortical thickness estimates were corrected for intracranial volume. Further, we performed a linear regression on regional CT values to remove effects of age and gender on cortical thickness. The residuals of this regression then replaced the raw values in the CT data matrix. These detrending steps were implemented to remove potentially confounding interindividual variation related to age and gender and intracranial volume. This method has been utilized by others (Melie-Garcia et al., 2018). Next, we used bootstrapping to threshold the network. Using this method, and for each window, an equal number of participants were resampled with replacement to construct 1000 bootstrapped structural networks. We then examined whether there were significant relations between each pair of regions across all bootstrapped networks. Consistent relationships between a pair

**Table 1.** Factor loadings for the PCA's for psychosocial functioning

Measure	PCA factor loadings
Mood and Feelings Questionnaire	0.364
Revised Children's Manifest Anxiety Scale	0.357
Short Leyton Obsessional Inventory	0.282
Child Behavior Checklist	0.241
Kessler Psychological Distress scale-10	0.35
Antisocial Process Screening Device	0.253
Child and Adolescent Dispositions Scale pro-sociality*	-0.123
Child and Adolescent Dispositions Scale negative emotionality	0.287
Child and Adolescent Dispositions Scale daring	0.001
Schizotypal Personality Questionnaire	0.329
Warwick-Edinburgh Mental Well Being Scale*	-0.309
Inventory of Callous-Unemotional traits	0.234
Barratt Impulsivity Scale-11	0.238

\*High score indicates positive psychosocial functioning.

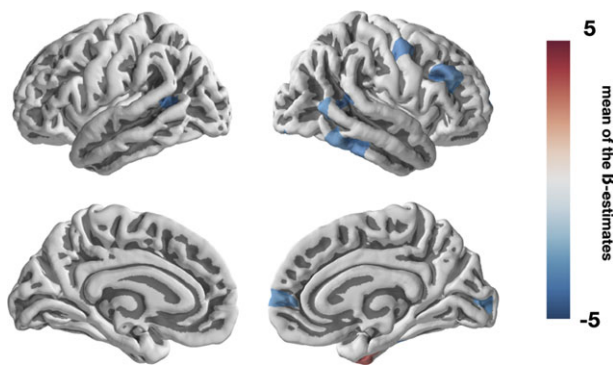
of regions (at  $p < .001$  adjusted for the False Discovery Rate (FDR) at the pair level (Váša et al., 2018)) were retained and the remaining relationships were discarded. For comparison, the main analyses were repeated without the detrending step for age and gender (Supplement).

### Sliding window method

We applied a sliding window method to assess how resilient functioning was related to changes in the nodal degree of the network, defined as the number of edges connected to a node (Figure 1). CT values of each region were cross-correlated with windows containing the same numbers of participants and moved across resilient functioning scores by stepwise increases. At each step (within each window) we estimated a structural covariance network. For more information on the sliding window technique see Váša et al. (2018). The selection of sliding window parameters, including window width ( $ww$ ) and step size ( $ss$ ) in units of number of participants involved several tradeoffs. The number of windows was defined using the following equation:

$$N_{wind} = \text{ceil}((N_{part} - ww)/ss)$$

Where  $N_{part}$  was the number of participants ( $n = 275$ ), and  $\text{ceil}$  the ceiling function, which rounds non-integer fractions to the smallest integer larger than said fraction. The  $ss$  and  $ww$  define the number of windows and this in turn has an impact on the sensitivity of the analyses. Therefore, we varied these parameters to explore consistency in the results, considering all nine combinations of window widths (40, 60, 80) and step sizes (5, 10, 20), plus one further combination of  $ww = 60$  and  $ss = 30$ , overlapping structural networks of 275 participants. We assessed the network topology changes by measuring the nodal degree. We then evaluated linear regional changes in nodal degree as a function of the median resilient functioning with Akaike's information criterion (AIC) and corrected for multiple comparisons (adjusted for the false discovery rate,  $p < .05$ ). We ran permutation tests at the level of the windows without reconstructing the correlation matrices to see if the regional effects of change in structural



**Figure 2.** Brain parcellations with positive or negative correlations between nodal degree and resilient functioning. Cortical regions where resilient functioning was significantly convergently associated with nodal degree after thresholding based on the convergence index ( $z > 1.645$ ). The colorbar represents the mean of the  $\beta$ -estimates with positive correlations in red and negative correlations in blue.

correlation as a function of resilient functioning was valid. A convergence index was calculated for each of the brain region under consideration, where the index represents the number of times the region is associated with resilient functioning for each of the above combinations. Thus, the convergence index of a cortical region 10 indicates that the region is always associated with resilient functioning and the convergence value of 0 of another region (or node) indicates that it never is (see Figure 1). Next, we conducted a standardization to define the significant regions associated with resilient functioning ( $z > 1.645$ ).

#### Availability of data and code

Data and code for the analyses will be available upon reasonable request at the University of Cambridge repository (<https://www.repository.cam.ac.uk/>). We uploaded the main results in the neuroimaging repository neurovault.org (Gorgolewski et al., 2015). The 1\_6CL.nii.gz upload (<https://identifiers.org/neurovault.image:785762>) corresponds to the mean of the  $\beta$ -estimates after thresholding of the main effect of resilient functioning on local nodal degree (Figure 2).

## Results

### Principal component scores

The first principal component of PCA for psychosocial functioning explained 44% variance across all psychological functioning measures ( $SD = 2.41$ , see Table 1 for all factor loadings). A higher score on the first component score was related to poorer psychosocial functioning, therefore, individual scores were subsequently inverted so that higher scores would indicate better psychosocial functioning.

The PCA for CFA resulted in a first component score that explained 37% variance ( $SD = 2.02$ , see Table 2 for specifics). Here, higher scores were related to lower CA and were subsequently inverted to indicate more CFA. As the score for CFA included a few positive parenting scales, we repeated the PCA without the positive parenting subscale. After removal of this subscale, the explained variance of our principal component was reduced by 0.3% (from 37.2% to 36.9%). Furthermore, principal component scores with and without this subscale correlated highly ( $r = .98$ ,  $t = -331.5$ ,  $df = 2404$ ,  $p$ -value  $< 2.2e-16$ ). Therefore, we decided to leave the positive parenting subscales in the PCA, in line with previous work (van Harmelen et al., 2017).

**Table 2.** Factor loadings for the PCA's for childhood family adversity

Measure	PCA factor loadings
Alabama Parenting Questionnaire positive parenting*	0.338
Alabama Parenting Questionnaire inconsistent parenting	-0.129
Alabama Parenting Questionnaire poor supervision	-0.227
Alabama Parenting Questionnaire involvement*	0.326
Alabama Parenting Questionnaire corporal punishment	0.232
The Measure of Parenting Style maternal abuse	-0.354
The Measure of Parenting Style maternal indifference	-0.343
The Measure of Parenting Style maternal control	-0.326
The Measure of Parenting Style paternal abuse	-0.337
The Measure of Parenting Style paternal indifference	-0.321
The Measure of Parenting Style paternal control	-0.301

\*High score indicates positive childhood family experiences.

Other components were observed in the data, however, the variance explained by these components was not enough to warrant additional analyses for any of these components in isolation. Scree plots showing the explained variance for each component in both PCA's can be found in the Supplement (Figure S1). The supplement also includes descriptive statistics for all subscales included in the PCA and demographic variables (age, gender and ethnicity) are listed (Table S3).

### Resilient functioning

To quantify the level of resilient functioning in our sample, we regressed the factor scores for CFA onto the factor score for psychosocial functioning. A linear model provided good fit (adjusted R-squared = 0.28,  $F(1,2404) = 957.2$ ,  $p < 2.2e-16$ , Est =  $-06.36e-01$ , SE =  $2.05e-02$ ,  $t = -30.94$ ,  $p < 2e-16$ , AIC = 10,257.64). A quadratic term improved model fit (Est =  $-0.04$ , SE = 0.005,  $t = 7.09$ ,  $p = 1.73e-12$ , AIC = 10,204.58), SSM = 204.24,  $F(1) = 50.3$ ,  $p < 1.73e-12$ ). A further cubic model showed weak model fit (Est =  $-0.002$ , SE = 0.001,  $t = -1.98$ ,  $p = .05$ ), and only a minimal improvement (AIC = 10,202.68, SSM = 15.82  $F(1) = 3.90$ ,  $p = .05$ ). Therefore, a quadratic model was selected (Figure 1b). Residual scores for this relationship were extracted as they reflect individual degrees of resilient functioning and were utilized in the subsequent analyses within the subsample from NSPN that underwent MRI ( $N = 275$ ). These resilient functioning scores were normally distributed in the subsample with MRI data, and there were no significant relationships between estimated resilient functioning and age ( $p = 0.15$ ), gender ( $p = 0.97$ ), SES ( $p = 0.36$ ), or scanning location ( $p = 0.9$ ) (see Supplementary Figure S2).

### Main results

Upon standardization ( $z > 1.65$ ) of those regions that were convergently related to resilient functioning, we found that resilient functioning was associated with a decrease in the nodal degree ( $p < .05$  FDR) of the posterior superior temporal sulcus (PSTS), dorsolateral prefrontal cortex (DLPFC), medial prefrontal cortex (MPFC), inferior and middle temporal gyrus (ITG and MTG), lateral occipital cortex (LOCC), pericalcarine, and

premotor cortex (Figure 2). Resilient functioning was also related to an increase in the nodal degree ( $p < .05$  FDR) of the anterior fusiform gyrus (FG) (Figure 2).

### Sensitivity analysis

To investigate the impact of the statistical correction of regional CT values for age and gender, we next reestimated structural networks using raw CT values (uncorrected for age and gender, see supplemental material for details). When CT was uncorrected, our findings remained largely similar (Figure S3). Resilient functioning was positively associated with nodal degree in the DMPFC, PSTS, MPFC, left temporal pole, lateral occipital, and lingual gyrus and negatively associated with nodal degree in the FG. In addition, our findings now also included positive associations between resilient functioning and nodal degree in the left temporoparietal junction (superior parietal and supramarginal gyrus).

### Discussion

The aim of this study was to investigate how brain structural network topology varies as a function of resilient functioning in a sample of adolescents and young adults with CFA. We showed that resilient psychosocial functioning is negatively associated with nodal degree of the dorsolateral prefrontal cortex (DLPFC), the medial prefrontal cortex (MPFC), the posterior superior temporal sulcus (PSTS), the inferior and middle temporal gyrus (ITG and MTG, resp.), the lateral occipital cortex (LOCC), the pericalcarine cortex, and the premotor cortex. These regions all play a role in a wide array of functions. Of particular interest is the role of these regions in social and emotional processing and regulation, given the importance of socio-emotional functioning in mental health vulnerability in adults exposed to CA (McCrary et al., 2022). The DLPFC is part of the CEN and involved in cognitive control and emotion regulation (Ochsner et al., 2002, 2012). Whereas the MPFC plays an important role in understanding social emotions and mentalizing (Blakemore, 2008; Olson et al., 2013; Van Overwalle, 2009). Importantly, apart from its role in social functioning alterations in medial prefrontal cortex (mPFC)-subcortical circuitry after CFA are associated with a wide array of affective and cognitive functions (Tottenham, 2020). Furthermore, the MPFC and temporal cortex are part of the default mode network (DMN, (Dixon et al., 2017)), which is thought to underpin introspective processes such as emotional processing, decision-making, memory, social cognition, and self-referential processes such as thinking about self-mental states (Northoff et al., 2006; Qin & Northoff, 2011). The DMN is also involved in thinking about other people's beliefs, intentions, and motivations (Koster-Hale & Saxe, 2013; Spreng et al., 2009). The PSTS has been identified as an important hub in social cognitive processing at different levels, integrating advanced associative and lower-level sensory processing areas (Allison et al., 2000). As such, our findings of reduced nodal degree of regions related to resilient functioning point to regions that help guide socio-emotional functioning.

During adolescence, the brain undergoes remarkable structural and functional reorganization, such as cortical thinning (Frangou et al., 2022; Tamnes et al., 2017; Wierenga et al., 2014), a decrease in cortical surface area and cortical volume (Tamnes et al., 2017) and increases in white matter volume (Giedd et al., 1999). On the microstructural level, such increases in white matter integrity and reorganization of structural brain networks are thought to contribute to more efficient structural brain networks (Koenis

et al., 2015). Resting-state functional connectivity shows age-related increases within networks and decreases between networks (Teeuw et al., 2019). In the current sample, decreases in nodal degree have been associated with the pruning of synaptic connections or attenuation of axonal projections in adolescence (Váša et al., 2018) and associated cortical thinning as well as the associated increases in myelination in these regions (Whitaker et al., 2016). As such, decreases in nodal degree are thought to reflect a normative developmental shift to a more efficient brain network configuration (Khundrakpam et al., 2013; Váša et al., 2018). Decreased nodal degree of brain regions in more resilient adolescents thus potentially resembles a mature structural network configuration in these individuals. Social support is known to influence adaptive maturational patterns; stronger mother-child interactions are associated with more mature prefrontal-limbic connectivity patterns in children (Gee et al., 2014), and friendship increases are associated with faster cortical thinning in the mPFC in adolescents (Becht et al., 2021). Friendships support has been well-established as predictor of resilient functioning in adolescents and young adults exposed to CA (Fritz et al., 2018; van Harmelen et al., 2017; 2021). Taking together the evidence of previous studies in the same and different samples, we suggest that our findings of negative associations between nodal degree and resilient functioning may reflect a more mature-like structural network topology in more resilient individuals. However, as we did not include longitudinal data, we can only speculate that developmental mechanisms explain the found associations. As such, it should be examined whether lower nodal degrees in individuals with more resilient functioning reflect more mature structural brain topology and or distinct developmental trajectories of the DLPFC, MPFC, PSTS, ITG, and MTG.

Resilient functioning was also associated with increased nodal degree in the anterior FG. One interpretation of our finding would be that maturation of the FG might be protracted (Haist & Anzures, 2017) or that this structure may be less mature in resilient individuals in this age group. The FG is specialized in the processing of faces and involved in facial emotion recognition (Adolphs, 2002). Aberrant neural activation in response to emotional faces in individuals exposed to CA is consistently reported in literature (Bérubé et al., 2023). The social transactional model of psychiatric vulnerability in adults exposed to CA suggests that such aberrant facial emotion processing reflects biased threat processing which could inadvertently impact social functioning and relations, and thereby increase vulnerability for psychiatric disorders (McCrary et al., 2022). Indeed, functional imaging studies showed that resilient adults with CA show improved ability to regulate emotions through medial prefrontal cortex- limbic downregulation, lower hippocampal activation to emotional faces, and increased amygdala habituation to stress (reviewed in Moreno-López et al., 2020). It should be examined if increased nodal degree in the anterior FG aids resilient functioning through improved facial emotion processing.

Strengths of this study include a large sample of carefully assessed participants recruited from the community with low to moderate CFA experiences and the use of a MPM protocol. One limitation is that we focused on CFA limiting the generalizability of results to individuals exposed to other types of CA. Furthermore, individuals with current treatment for psychiatric disorders were excluded and the lower spectrum of CFA was overrepresented in this study. Therefore, future studies are needed to investigate whether similar or distinct mechanisms aid resilient functioning in individuals with more extreme CFA experiences. A limitation of



our residual variance approach to quantify resilient functioning is that this entails a strong association between psychosocial functioning and the measures of functioning; as the residuals will, by design, be highly correlated with psychosocial outcomes. However, in our sample CFA severity was correlated significantly with psychosocial outcomes as such, our approach can explicitly separate functioning outcomes towards the extremes of CFA severity. As an example, an individual who has experienced little or no CFA will have lower resilient functioning scores than an individual who experienced severe CFA, even if the latter may have lower absolute psychosocial functioning (see Figure 1b). Another limitation of our study is that we did not include subcortical regions in our analysis. Future studies should aim to explore structural covariance between and among cortical and subcortical gray matter structures to describe a more substantive and thorough structural covariance network underlying possible differences in for instance social cognition and emotional regulation in adolescents. Also, it was beyond the scope of this study to incorporate different structural covariance measures while other measures, such as modularity, show interesting developmental effects as well (e.g., Aboud et al., 2019). Further, the results of any sliding window method are dependent on the parameters used (i.e., window width and step size), in addition to the resilience scores being non-homogeneously distributed. However, we systematically varied these parameters, and focused on only those regions showing significant convergent results across ten parameter combinations.

CA is one of the strongest predictors of mental health problems in later life, and as such it is critical that we better understand how resilience can be achieved in young people with CA. To do so, resilience research examines why some young people with CA go on to develop mental illness, whereas others do not. By better understanding this variability in functioning outcomes in CA-exposed individuals, resilience research represents a shift away from a disease focussed model towards a preventative model. As such, resilience research aims to inform intervention and prevention efforts for individuals at risk (Masten, 2019; Luthar & Cicchetti, 2000). Recent models emphasize that resilience is facilitated by complex interrelations across cultural, social, psychological, and neurobiological systems and their development over time (Masten & Cicchetti, 2010; Masten et al., 2021). Within this multisystem framework, neuroimaging studies help inform our understanding of the neurobiological mechanisms that help aid resilient functioning (Ioannidis et al., 2020). By studying how these mechanisms interact with social or psychological systems these studies can provide key insights for prevention or intervention efforts (Cicchetti & Toth, 2015). In this study, we integrated two systems: individual psychosocial functioning and the brain. We examined the structural network topology of resilient functioning in adolescents and young adults exposed to CFA. We found that higher resilient functioning was convergently associated with lower nodal degree of DLPFC, MPFC, PSTS, ITG and MTG, LOCC, pericalcarine cortex, and the premotor cortex. These regions all play a role in a wide array of functions, of particular interest is their role in social-emotional functioning. Developmental changes in adolescence include extensive remodeling of structural covariance patterns, including reductions in nodal degree. As previous work in this sample showed negative associations between age and nodal degree (Váša et al., 2018; Whitaker et al., 2016), our findings of lower nodal degree being related to higher resilient functioning may be compatible with more mature-like structural network topology in more resilient young people with CFA.

**Supplementary material.** The supplementary material for this article can be found at <https://doi.org/10.1017/S0954579423000901>.

**Acknowledgements and funding sources.** The authors are grateful to the volunteers who took part in these studies, as well as all the members of staff involved in the recruitment process. This work was supported by the Neuroscience in Psychiatry Network (NSPN) Consortium, a strategic award from the Wellcome Trust to the University of Cambridge and University College London (095844/Z/11/Z); the Leiden Social Resilience and Security program, the Cambridge NIHR Biomedical Research Center and by the Max Planck–UCL Center for Computational Psychiatry and Ageing, a joint initiative of the Max Planck Society and University College London; a Royal Society Dorothy Hodgkin Fellowship for Prof. Anne-Laura van Harmelen (DH150176); an NIHR Senior Investigator award for Prof. Ed Bullmore and a Wolfe Health Fellowship for Dr Laura Moreno-López. Dr František Váša was supported by the Gates Cambridge Trusts, the Data to Early Diagnosis and Precision Medicine Industrial Strategy Challenge Fund, UK Research and Innovation, and the Bill & Melinda Gates Foundation.

**Author contribution.** LML and NGG analyzed the imaging data and drafted the manuscript with EELB, SNS, MS and ALvH. ALvH conceptualized and designed the study, analyzed the behavioral data, and reviewed and revised the manuscript. All authors approved the final manuscript and agreed to be accountable for all aspects of the work presented.

**Competing interests.** ETB is a member of the scientific advisory board for Sosei Heptares and a consultant for GlaxoSmithKline.

## References

- Aboud, K. S., Huo, Y., Kang, H., Ealey, A., Resnick, S. M., Landman, B. A., & Cutting, L. E. (2019). Structural covariance across the lifespan: Brain development and aging through the lens of inter-network relationships. *Human Brain Mapping, 40*(1), 125–136. <https://doi.org/10.1002/hbm.24359>
- Achenbach, T. (1991). *Manual for Child Behavior Checklist/ 4-18 and 1991 Profile (University)*.
- Adolphs, R. (2002). Neural systems for recognizing emotion. *Current Opinion in Neurobiology, 12*(2), 169–177. [https://doi.org/10.1016/S0959-4388\(02\)00301-X](https://doi.org/10.1016/S0959-4388(02)00301-X)
- Alexander-Bloch, A., Raznahan, A., Bullmore, E., & Giedd, J. (2013). The convergence of maturational change and structural covariance in human cortical networks. *The Journal of Neuroscience, 33*(7), 2889–2899. <https://doi.org/10.1523/JNEUROSCI.3554-12.2013>
- Allison, T., Puce, A., & McCarthy, G. (2000). Social perception from visual cues: Role of the STS region. *Trends in Cognitive Sciences, 4*(7), 267–278. [https://doi.org/10.1016/S1364-6613\(00\)01501-1](https://doi.org/10.1016/S1364-6613(00)01501-1)
- Angold, A., Costello, J., Van Kammen, W., & Stouthamer-Loeber, M. (1996). Development of a short questionnaire for use in epidemiological studies of depression in children and adolescents: Factor composition and structure across development. *International Journal of Methods in Psychiatric Research, 5*, 251–262.
- Bamber, D., Tamplin, A., Park, R. J., Kyte, Z. A., & Goodyer, I. M. (2002). Development of a short Leyton obsessional inventory for children and adolescents. *Journal of the American Academy of Child & Adolescent Psychiatry, 41*(10), 1246–1252. <https://doi.org/10.1097/00004583-200210000-00015>
- Becht, A. I., Wierenga, L. M., Mills, K. L., Meuwese, R., van Duijvenvoorde, A., Blakemore, S.-J., Güroğlu, B., & Crone, E. A. (2021). Beyond the average brain: Individual differences in social brain development are associated with friendship quality. *Social Cognitive and Affective Neuroscience, 16*(3), 292–301. <https://doi.org/10.1093/scan/nsaa166>
- Bérubé, A., Turgeon, J., Blais, C., & Fiset, D. (2023). Emotion recognition in adults with a history of childhood maltreatment: A systematic review. *Trauma, Violence, & Abuse, 24*(1), 278–294. <https://doi.org/10.1177/15248380211029403>
- Blakemore, S.-J. (2008). The social brain in adolescence. *Nature Reviews Neuroscience, 9*(4), 267–277. <https://doi.org/10.1038/nrn2353>

- Bullmore, E. T., & Bassett, D. S. (2011). Brain graphs: Graphical models of the human brain connectome. *Annual Review of Clinical Psychology*, 7(1), 113–140. <https://doi.org/10.1146/annurev-clinpsy-040510-143934>
- Cahill, S., Hager, R., & Chandola, T. (2022). The validity of the residuals approach to measuring resilience to adverse childhood experiences. *Child and Adolescent Psychiatry and Mental Health*, 16(1), 18. <https://doi.org/10.1186/s13034-022-00449-y>
- Cicchetti, D., & Toth, S. (2015). Multilevel developmental perspectives on child maltreatment. *Development and Psychopathology*, 27(4pt2), 1385–1386. <https://doi.org/10.1017/S0954579415000814>
- Desikan, R. S., Ségonne, F., Fischl, B., Quinn, B. T., Dickerson, B. C., Blacker, D., Buckner, R. L., Dale, A. M., Maguire, R. P., Hyman, B. T., Albert, M. S., Killiany, R. J. (2006). An automated labeling system for subdividing the human cerebral cortex on MRI scans into gyral based regions of interest. *NeuroImage*, 31(3), 968–980. <https://doi.org/10.1016/j.neuroimage.2006.01.021>
- Dixon, M. L., Thiruchselvam, R., Todd, R., & Christoff, K. (2017). Emotion and the prefrontal cortex: An integrative review. *Psychological Bulletin*, 143(10), 1033–1081. <https://doi.org/10.1037/bul0000096>
- Eaton, S., Cornwell, H., Hamilton-Giachritsis, C., & Fairchild, G. (2022). Resilience and young people's brain structure, function and connectivity: A systematic review. *Neuroscience & Biobehavioral Reviews*, 132, 936–956. <https://doi.org/10.1016/j.neubiorev.2021.11.001>
- Elgar, F. J., Waschbusch, D. A., Dadds, M. R., & Sigvaldason, N. (2007). Development and validation of a short form of the Alabama Parenting Questionnaire. *Journal of Child and Family Studies*, 16(2), 243–259. <https://doi.org/10.1007/s10826-006-9082-5>
- Fettes, P., Schulze, L., & Downar, J. (2017). Cortico-striatal-thalamic loop circuits of the orbitofrontal cortex: Promising therapeutic targets in psychiatric illness. *Frontiers in Systems Neuroscience*, 11. <https://doi.org/10.3389/fnsys.2017.00025>
- Fischl, B., Salat, D. H., Busa, E., Albert, M., Dieterich, M., Haselgrove, C., van der Kouwe, A., Killiany, R., Kennedy, D., Klaveness, S., Montillo, A., Makris, N., Rosen, B., Dale, A. M. (2002). Whole brain segmentation. *Neuron*, 33(3), 341–355. [https://doi.org/10.1016/S0896-6273\(02\)00569-X](https://doi.org/10.1016/S0896-6273(02)00569-X)
- Frangou, S., Modabbernia, A., Williams, S. C. R., Papachristou, E., Doucet, G. E., Agartz, I., Aghajani, M., Akudjedu, T. N., Albajes-Eizaguirre, A., Alnaes, D., Alpert, K. I., Andersson, M., Andreassen, N. C., Andreassen, O. A., Asherson, P., Banaschewski, T., Bargallo, N., Baumeister, S., Baur-Streubel, R., . . . & Dima, D. (2022). Cortical thickness across the lifespan: Data from 17,075 healthy individuals aged 3–90 years. *Human Brain Mapping*, 43(1), 431–451. <https://doi.org/10.1002/hbm.25364>
- Frick, P. J., Bodin, S. D., & Barry, C. T. (2000). Psychopathic traits and conduct problems in community and clinic-referred samples of children: Further development of the psychopathy screening device. *Psychological Assessment*, 12(4), 382–393. <https://doi.org/10.1037/1040-3590.12.4.382>
- Fritz, J., de Graaff, A. M., Caisley, H., van Harmelen, A.-L., & Wilkinson, P. O. (2018). A systematic review of amenable resilience factors that moderate and/or mediate the relationship between childhood adversity and mental health in young people. *Frontiers in Psychiatry*, 9, 230. <https://doi.org/10.3389/fpsy.2018.00230>
- Gee, D. G., Gabard-Durnam, L., Telzer, E. H., Humphreys, K. L., Goff, B., Shapiro, M., Flannery, J., Lumian, D. S., Fareri, D. S., Caldera, C., Tottenham, N. (2014). Maternal buffering of human amygdala-prefrontal circuitry during childhood but not during adolescence. *Psychological Science*, 25(11), 2067–2078. <https://doi.org/10.1177/0956797614550878>
- Giedd, J. N., Blumenthal, J., Jeffries, N. O., Castellanos, F. X., Liu, H., Zijdenbos, A., Paus, T., Evans, A. C., & Rapoport, J. L. (1999). Brain development during childhood and adolescence: A longitudinal MRI study. *Nature Neuroscience*, 2(10), 861–863. <https://doi.org/10.1038/13158>
- Gorgolewski, K. J., Varoquaux, G., Rivera, G., Schwarz, Y., Ghosh, S. S., Maumet, C., Sochat, V. V., Nichols, T. E., Poldrack, R. A., Poline, J.-B., Yarkoni, T., Margulies, D. S. (2015). NeuroVault.org: A web-based repository for collecting and sharing unthresholded statistical maps of the human brain. *Frontiers in Neuroinformatics*, 9. <https://doi.org/10.3389/fninf.2015.00008>
- Green, J. G., McLaughlin, K. A., Berglund, P. A., Gruber, M. J., Sampson, N. A., Zaslavsky, A. M., & Kessler, R. C. (2010). Childhood adversities and adult psychiatric disorders in the national comorbidity survey replication I: Associations with first onset of DSM-IV disorders. *Archives of General Psychiatry*, 67(2), 113. <https://doi.org/10.1001/archgenpsychiatry.2009.186>
- Haist, F., & Anzures, G. (2017). Functional development of the brain's face-processing system. *Wiley Interdisciplinary Reviews: Cognitive Science*, 8(1–2), e1423. <https://doi.org/10.1002/wcs.1423>
- Honaker, J., King, G., & Blackwell, M. (2011). Amelia II: A program for missing data. *Journal of Statistical Software*, 45(7). <https://doi.org/10.18637/jss.v045.i07>
- Ioannidis, K., Askelund, A. D., Kievit, R. A., & van Harmelen, A.-L. (2020). The complex neurobiology of resilient functioning after childhood maltreatment. *BMC Medicine*, 18(1), 32. <https://doi.org/10.1186/s12916-020-1490-7>
- Kaiser, M. (2011). A tutorial in connectome analysis: Topological and spatial features of brain networks. *NeuroImage*, 57(3), 892–907. <https://doi.org/10.1016/j.neuroimage.2011.05.025>
- Kalisch, R., Baker, D. G., Basten, U., Boks, M. P., Bonanno, G. A., Brummelman, E., Chmutorz, A., Fernández, G., Fiebach, C. J., Galatzer-Levy, I., Geuze, E., Groppa, S., Helmreich, I., Hendler, T., Hermans, E. J., Jovanovic, T., Kubiak, T., Lieb, K., Lutz, B., . . . & Kleim, B. (2017). The resilience framework as a strategy to combat stress-related disorders. *Nature Human Behaviour*, 1(11), 784–790. <https://doi.org/10.1038/s41562-017-0200-8>
- Kalisch, R., Cramer, A. O. J., Binder, H., Fritz, J., Leertouwer, Ij, Lunansky, G., Meyer, B., Timmer, J., Veer, I. M., van Harmelen, A.-L. (2019). Deconstructing and reconstructing resilience: A dynamic network approach. *Perspectives on Psychological Science*, 174569161985563(5), 765–777. <https://doi.org/10.1177/1745691619855637>
- Kessler, R. C., Andrews, G., Colpe, L. J., Hiripi, E., Mroczek, D. K., Normand, S. L. T., Walters, E. E., & Zaslavsky, A. M. (2002). Short screening scales to monitor population prevalences and trends in non-specific psychological distress. *Psychological Medicine*, 32(6), 959–976. <https://doi.org/10.1017/s0033291702006074>
- Khundrakpam, B. S., Reid, A., Brauer, J., Carbonell, F., Lewis, J., Ameis, S., Karama, S., Lee, J., Chen, Z., Das, S., Evans, A. C. (2013). Developmental changes in organization of structural brain networks. *Cerebral Cortex*, 23(9), 2072–2085. <https://doi.org/10.1093/cercor/bhs187>
- Koenis, M. M. G., Brouwer, R. M., van den Heuvel, M. P., Mandl, R. C. W., van Soelen, I. L. C., Kahn, R. S., Boomsma, D. I., & Hulshoff Pol, H. E. (2015). Development of the brain's structural network efficiency in early adolescence: A longitudinal DTI twin study. *Human Brain Mapping*, 36(12), 4938–4953. <https://doi.org/10.1002/hbm.22988>
- Koster-Hale, J., & Saxe, R. (2013). Theory of mind: A neural prediction problem. *Neuron*, 79(4), 836–848. <https://doi.org/10.1016/j.neuron.2013.08.020>
- Kovach, C. K., Daw, N. D., Rudrauf, D., Tranel, D., O'Doherty, J. P., & Adolphs, R. (2012). Anterior prefrontal cortex contributes to action selection through tracking of recent reward trends. *Journal of Neuroscience*, 32(25), 8434–8442. <https://doi.org/10.1523/JNEUROSCI.5468-11.2012>
- Krendl, A. C., & Betzel, R. F. (2022). Social cognitive network neuroscience. *Social Cognitive and Affective Neuroscience*, 17(5), 510–529. <https://doi.org/10.1093/scan/nsac020>
- Lahey, B. B., Applegate, B., Chronis, A. M., Jones, H. A., Williams, S. H., Loney, J., & Waldman, I. D. (2008). Psychometric characteristics of a measure of emotional dispositions developed to test a developmental propensity model of conduct disorder. *Journal of Clinical Child & Adolescent Psychology*, 37(4), 794–807. <https://doi.org/10.1080/15374410802359635>
- Leal, A. S. M., & Silvers, J. A. (2021). Neurobiological markers of resilience to early-life adversity during adolescence. *Biological Psychiatry: Cognitive Neuroscience and*, 6(2), 238–247. <https://doi.org/10.1016/j.bpsc.2020.08.004>
- Luthar, S. S., & Cicchetti, D. (2000). The construct of resilience: Implications for interventions and social policies. *Development and Psychopathology*, 12(4), 857–885. <https://doi.org/10.1017/S0954579407000314>
- Masten, A. S. (2019). Resilience from a developmental systems perspective. *World Psychiatry*, 18(1), 101–102. <https://doi.org/10.1002/wps.20591>
- Masten, A. S., & Cicchetti, D. (2010). Developmental cascades. *Development and Psychopathology*, 22(3), 491–495. <https://doi.org/10.1017/S0954579410000222>

- Masten, A. S., Lucke, C. M., Nelson, K. M., & Stallworthy, I. C.** (2021). Resilience in development and psychopathology: Multisystem perspectives. *Annual Review of Clinical Psychology*, 17(1), 521–549. <https://doi.org/10.1146/annurev-clinpsy-081219-120307>
- Masten, A. S., & Monn, A. R.** (2015). Child and family resilience: A call for integrated science, practice, and professional training: Child and family resilience. *Family Relations*, 64(1), 5–21. <https://doi.org/10.1111/fare.121103>
- McCrary, E., Foulkes, L., & Viding, E.** (2022). Social thinning and stress generation after childhood maltreatment: A neurocognitive social transactional model of psychiatric vulnerability. *The Lancet Psychiatry*, 9(10), 828–837. [https://doi.org/10.1016/S2215-0366\(22\)00202-4](https://doi.org/10.1016/S2215-0366(22)00202-4)
- Melie-Garcia, L., Slater, D., Ruef, A., Sanabria-Diaz, G., Preisig, M., Kherif, F., Draganski, B., & Lutti, A.** (2018). Networks of myelin covariance. *Human Brain Mapping*, 39(4), 1532–1554. <https://doi.org/10.1002/hbm.23929>
- Miller, D. J., Duka, T., Stimpson, C. D., Schapiro, S. J., Baze, W. B., McArthur, M. J., Fobbs, A. J., Sousa, A. M. M., Séstan, N., Wildman, D. E., Lipovich, L., Kuzawa, C. W., Hof, P. R., Sherwood, C. C.** (2012). Prolonged myelination in human neocortical evolution. *Proceedings of the National Academy of Sciences of the United States of America*, 109(41), 16480–16485. <https://doi.org/10.1073/pnas.1117943109>
- Moreno-López, I., Ioannidis, K., Askelund, A. D., Smith, A. J., Schueler, K., & van Harmelen, A.-L.** (2020). The resilient emotional brain: A scoping review of the medial prefrontal cortex and limbic structure and function in resilient adults with a history of childhood maltreatment. *Biological Psychiatry: Cognitive Neuroscience and Neuroimaging*, 5(4), 392–402. <https://doi.org/10.1016/j.bpsc.2019.12.008>
- Northoff, G., Heinzl, A., de Greck, M., Bermpohl, F., Dobrowolny, H., & Panksepp, J.** (2006). Self-referential processing in our brain - A meta-analysis of imaging studies on the self. *NeuroImage*, 31(1), 440–457. <https://doi.org/10.1016/j.neuroimage.2005.12.002>
- Ochsner, K. N., Bunge, S. A., Gross, J. J., & Gabrieli, J. D. E.** (2002). Rethinking feelings: An fMRI study of the cognitive regulation of emotion. *Journal of Cognitive Neuroscience*, 14(8), 1215–1229. <https://doi.org/10.1162/089892902760807212>
- Ochsner, K. N., Silvers, J. A., & Buhle, J. T.** (2012). Functional imaging studies of emotion regulation: A synthetic review and evolving model of the cognitive control of emotion. *Annals of the New York Academy of Sciences*, 1251(1), E1–24. <https://doi.org/10.1111/j.1749-6632.2012.06751.x>
- Ohashi, K., Anderson, C. M., Bolger, E. A., Khan, A., McGreenery, C. E., & Teicher, M. H.** (2019). Susceptibility or resilience to maltreatment can be explained by specific differences in brain network architecture. *Biological Psychiatry*, 85(8), 690–702. <https://doi.org/10.1016/j.biopsych.2018.10.016>
- Olson, I. R., McCoy, D., Klobusicky, E., & Ross, L. A.** (2013). Social cognition and the anterior temporal lobes: A review and theoretical framework. *Social Cognitive and Affective Neuroscience*, 8(2), 123–133. <https://doi.org/10.1093/scan/nss119>
- Parker, G., Roussos, J., Hadzi-Pavlovic, D., Mitchell, P., Wilhelm, K., & Austin, M. P.** (1997). The development of a refined measure of dysfunctional parenting and assessment of its relevance in patients with affective disorders. *Psychological Medicine*, 27(5), 1193–1203. <https://doi.org/10.1017/S003329179700545x>
- Qin, P., & Northoff, G.** (2011). How is our self related to midline regions and the default-mode network? *NeuroImage*, 57(3), 1221–1233. <https://doi.org/10.1016/j.neuroimage.2011.05.028>
- Raine, A.** (1991). The spq: A scale for the assessment of schizotypal personality based on DSM-III-r criteria. *Schizophrenia Bulletin*, 17(4), 555–564. <https://doi.org/10.1093/schbul/17.4.555>
- Reynolds, C. R., & Richmond, B. O.** (1997). What I think and feel: A revised measure of children's manifest anxiety. *Journal of Abnormal Child Psychology*, 25(1), 15–20. <https://doi.org/10.1023/A:1025751206600>
- Romero-García, R., Atienza, M., Clemmensen, L. H., & Cantero, J. L.** (2012). Effects of network resolution on topological properties of human neocortex. *NeuroImage*, 59(4), 3522–3532. <https://doi.org/10.1016/j.neuroimage.2011.10.086>
- Roose, A., Bijttebier, P., Decoene, S., Claes, L., & Frick, P. J.** (2010). Assessing the affective features of psychopathy in adolescence: A further validation of the inventory of callous and unemotional traits. *Assessment*, 17(1), 44–57. <https://doi.org/10.1177/1073191109344153>
- Rosseel, Y.** (2012). Lavaan: An R package for structural equation modeling. *Journal of Statistical Software*, 48(2). <https://doi.org/10.18637/jss.v048.i02>
- Rubinov, M., & Sporns, O.** (2010). Complex network measures of brain connectivity: Uses and interpretations. *NeuroImage*, 52(3), 1059–1069. <https://doi.org/10.1016/j.neuroimage.2009.10.003>
- Seidlitz, J., Váša, Fšek, Shinn, M., Romero-García, R., Whitaker, K. J., Vértes, P. E., Wagstyl, K., Kirkpatrick Reardon, P., Clasen, L., Liu, S., Messinger, A., Leopold, D. A., Fonagy, P., Dolan, R. J., Jones, P. B., Goodyer, I. M., Raznahan, A., & Bullmore, E. T.** (2018). Morphometric similarity networks detect microscale cortical organization and predict inter-individual cognitive variation. *Neuron*, 97(1), 231–247.e7. <https://doi.org/10.1016/j.neuron.2017.11.039>
- Spreng, R. N., Mar, R. A., & Kim, A. S. N.** (2009). The common neural basis of autobiographical memory, prospection, navigation, theory of mind, and the default mode: A quantitative meta-analysis. *Journal of Cognitive Neuroscience*, 21(3), 489–510. <https://doi.org/10.1162/jocn.2008.21029>
- Stanford, M. S., Mathias, C. W., Dougherty, D. M., Lake, S. L., Anderson, N. E., & Patton, J. H.** (2009). Fifty years of the Barratt Impulsiveness Scale: An update and review. *Personality and Individual Differences*, 47(5), 385–395. <https://doi.org/10.1016/j.paid.2009.04.008>
- Sun, D., Haswell, C. C., Morey, R. A., & De Bellis, M. D.** (2019). Brain structural covariance network centrality in maltreated youth with PTSD and in maltreated youth resilient to PTSD. *Development and Psychopathology*, 31(02), 557–571. <https://doi.org/10.1017/S0954579418000093>
- Sun, D., Peverill, M. R., Swanson, C. S., McLaughlin, K. A., & Morey, R. A.** (2018). Structural covariance network centrality in maltreated youth with posttraumatic stress disorder. *Journal of Psychiatric Research*, 98, 70–77. <https://doi.org/10.1016/j.jpsychires.2017.12.015>
- Tamnes, C. K., Herting, M. M., Goddings, A.-L., Meuwese, R., Blakemore, S.-J., Dahl, R. E., Guroglu, B., Raznahan, A., Sowell, E. R., Crone, E. A., Mills, K. L.** (2017). Development of the cerebral cortex across adolescence: A multisample study of inter-related longitudinal changes in cortical volume, surface area, and thickness. *The Journal of Neuroscience*, 37(12), 3402–3412. <https://doi.org/10.1523/JNEUROSCI.3302-16.2017>
- Teeuw, J., Brouwer, R. M., Guimarães, J. P. O. F. T., Brandner, P., Koenis, M. M. G., Swagerman, S. C., Verwoert, M., Boomsmá, D. I., & Hulshoff Pol, H. E.** (2019). Genetic and environmental influences on functional connectivity within and between canonical cortical resting-state networks throughout adolescent development in boys and girls. *NeuroImage*, 202, 116073. <https://doi.org/10.1016/j.neuroimage.2019.116073>
- Tennant, R., Hiller, L., Fishwick, R., Platt, S., Joseph, S., Weich, S., Parkinson, J., Secker, J., & Stewart-Brown, S.** (2007). The Warwick-Edinburgh Mental Well-being Scale (WEMWBS): Development and UK validation. *Health and Quality of Life Outcomes*, 5(1), 63. <https://doi.org/10.1186/1477-7525-5-63>
- Tottenham, N.** (2020). Neural meaning making, prediction, and prefrontal - Subcortical development following early adverse caregiving. *Development and Psychopathology*, 32(5), 1563–1578. <https://doi.org/10.1017/S0954579420001169>
- van Harmelen, A.-L., Blakemore, S. J., Goodyer, I. M., & Kievit, R. A.** (2021). The interplay between adolescent friendship quality and resilient functioning following childhood and adolescent adversity. *Adversity and Resilience Science*, 2(1), 37–50. <https://doi.org/10.1007/s42844-020-00027-1>
- van Harmelen, A.-L., Kievit, R. A., Ioannidis, K., Neufeld, S., Jones, P. B., Bullmore, E., Dolan, R., Goodyer, I.** (2017). Adolescent friendships predict later resilient functioning across psychosocial domains in a healthy community cohort. *Psychological Medicine*, 47(13), 2312–2322. <https://doi.org/10.1017/S0033291717000836>
- Van Overwalle, F.** (2009). Social cognition and the brain: A meta-analysis. *Human Brain Mapping*, 30(3), 829–858. <https://doi.org/10.1002/hbm.20547>
- Váša, F., Seidlitz, J., Romero-García, R., Whitaker, K. J., Rosenthal, G., Vértes, P. E., Shinn, M., Alexander-Bloch, A., Fonagy, P., Dolan, R. J., Jones, P. B., Goodyer, I. M., Sporns, O., Bullmore, E. T.** (2018). Adolescent tuning of association cortex in human structural brain networks. *Cerebral Cortex*, 28(1), 281–294. <https://doi.org/10.1093/cercor/bhx249>

- Vijayakumar, N., Ball, G., Seal, M. L., Mundy, L., Whittle, S., & Silk, T. (2021). The development of structural covariance networks during the transition from childhood to adolescence. *Scientific Reports*, *11*(1), 9451. <https://doi.org/10.1038/s41598-021-88918-w>
- Vijayakumar, N., Mills, K. L., Alexander-Bloch, A., Tammes, C. K., & Whittle, S. (2018). Structural brain development: A review of methodological approaches and best practices. *Developmental Cognitive Neuroscience*, *33*, 129–148. <https://doi.org/10.1016/j.dcn.2017.11.008>
- Weiskopf, N., Suckling, J., Williams, G., Correia, M. M., Inkster, B., Tait, R., Ooi, C., Bullmore, E. T., & Lutti, A. (2013). Quantitative multi-parameter mapping of R1, PD\*, MT, and R2\* at 3T: A multi-center validation. *Frontiers in Neuroscience*, *7*, 95. <https://doi.org/10.3389/FNINS.2013.00095>
- Whitaker, K. J., Vértes, P. E., Romero-Garcia, R., Váša, Fšek, Moutoussis, M., Prabhu, G., Weiskopf, N., Callaghan, M. F., Wagstyl, K., Rittman, T., Tait, R., Ooi, C., Suckling, J., Inkster, B., Fonagy, P., Dolan, R. J., Jones, P. B., Goodyer, I. M., Goodyer, I., . . . , Villis, L. (2016). Adolescence is associated with genomically patterned consolidation of the hubs of the human brain connectome. *Proceedings of The National Academy of Sciences of The United States of America*, *113*(32), 9105–9110. <https://doi.org/10.1073/PNAS.1601745113>
- Wierenga, L. M., Langen, M., Oranje, B., & Durston, S. (2014). Unique developmental trajectories of cortical thickness and surface area. *NeuroImage*, *87*, 120–126. <https://doi.org/10.1016/j.neuroimage.2013.11.010>
- Yun, J.-Y., Kim, S. N., Lee, T. Y., Chon, M.-W., & Kwon, J. S. (2016). Individualized covariance profile of cortical morphology for auditory hallucinations in first-episode psychosis. *Human Brain Mapping*, *37*(3), 1051–1065. <https://doi.org/10.1002/hbm.23083>
- Zhang, L., Rakesh, D., Cropley, V., & Whittle, S. (2023). A systematic review on neurobiological mechanism of resilience in childhood and adolescence. *PsyArXiv*. <https://doi.org/10.31234/osf.io/sxzf8>
- Zielinski, B. A., Gennatas, E. D., Zhou, J., & Seeley, W. W. (2010). Network-level structural covariance in the developing brain. *Proceedings of The National Academy of Sciences of The United States of America*, *107*(42), 18191–18196. <https://doi.org/10.1073/pnas.1003109107>