



Universiteit  
Leiden  
The Netherlands

## **Breaking barriers: unraveling response mechanisms to immunotherapy in breast cancer**

Blomberg, O.S.

### **Citation**

Blomberg, O. S. (2024, January 11). *Breaking barriers: unraveling response mechanisms to immunotherapy in breast cancer*. Retrieved from <https://hdl.handle.net/1887/3677353>

Version: Publisher's Version

License: [Licence agreement concerning inclusion of doctoral thesis in the Institutional Repository of the University of Leiden](#)

Downloaded from: <https://hdl.handle.net/1887/3677353>

**Note:** To cite this publication please use the final published version (if applicable).

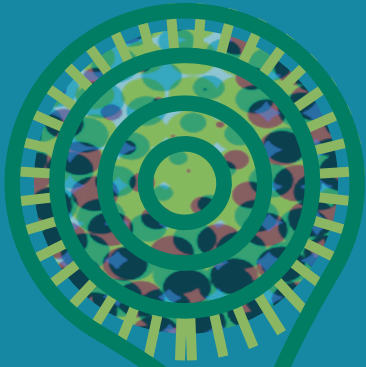
# BREAKING BARRIERS

Unraveling response mechanisms  
to immunotherapy in breast cancer

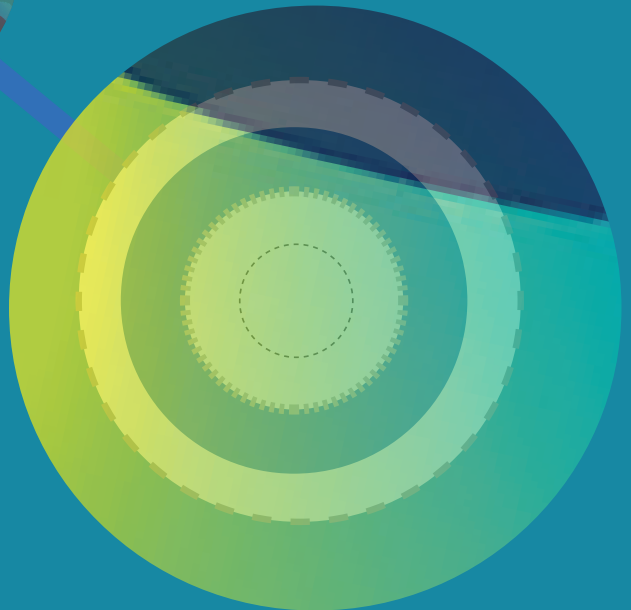
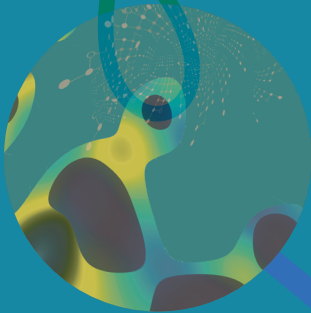
Olga S. Blomberg

The background features a complex molecular structure in the center, rendered in a light blue and white color scheme. To the left, there is a large, glowing green and yellow sphere. The bottom half of the cover is dominated by large, abstract, organic shapes in shades of green, yellow, and blue, which appear to be part of a larger molecular or cellular structure.

RESPONSE



RESISTANCE



NEW OPPORTUNITIES