



Universiteit
Leiden
The Netherlands

Insights into microtubule catastrophes: the effect of end-binding proteins and force

Kalisch, S.M.J.

Citation

Kalisch, S. M. J. (2023, December 13). *Insights into microtubule catastrophes: the effect of end-binding proteins and force*. Retrieved from <https://hdl.handle.net/1887/3673428>

Version: Publisher's Version

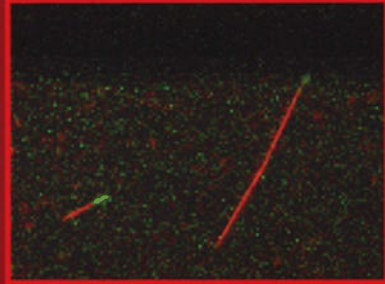
License: [Licence agreement concerning inclusion of doctoral thesis in the Institutional Repository of the University of Leiden](#)

Downloaded from: <https://hdl.handle.net/1887/3673428>

Note: To cite this publication please use the final published version (if applicable).

Insights into Microtubule Catastrophes

The Effect of End-binding Proteins
and Force



Svenja-Marei Kalisch