



Universiteit
Leiden
The Netherlands

Integrating cellular and tissue dynamics with cell fate decisions through computational modeling

Heldring, M.M.

Citation

Heldring, M. M. (2023, December 12). *Integrating cellular and tissue dynamics with cell fate decisions through computational modeling*. Retrieved from <https://hdl.handle.net/1887/3666239>

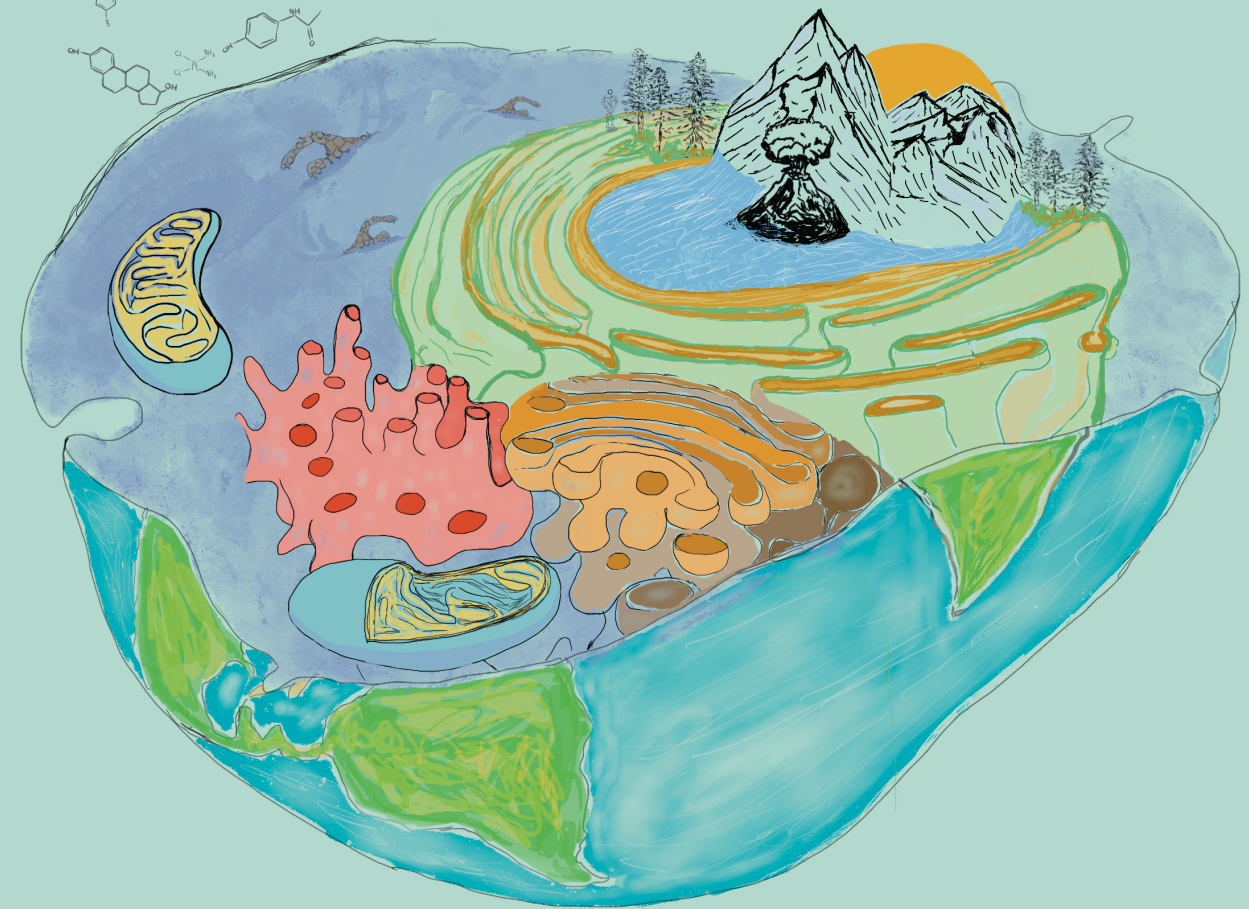
Version: Publisher's Version

License: [Licence agreement concerning inclusion of doctoral thesis in the Institutional Repository of the University of Leiden](#)

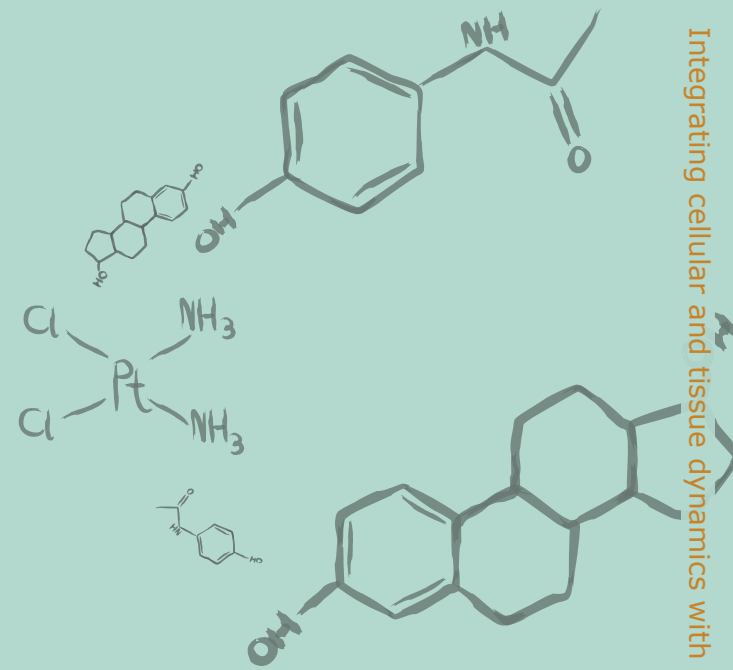
Downloaded from: <https://hdl.handle.net/1887/3666239>

Note: To cite this publication please use the final published version (if applicable).

Integrating cellular and tissue dynamics with cell fate decisions through computational modeling



Muriel M Heldring



Integrating cellular and tissue dynamics with cell fate decisions through computational modeling



Muriel M Heldring