



**Universiteit
Leiden**
The Netherlands

Baseline and early digital [F-18]FDG PET/CT and multiparametric MRI contain promising features to predict response to neoadjuvant therapy in locally advanced rectal cancer patients: a pilot study

Vuijk, F.A.; Shahbazi, S.F.; Noortman, W.A.; Velden, F.H.P. van; Dibbets-Schneider, P.; Marinelli, A.W.K.S.; ... ; Geus-Oei, L.F. de

Citation

Vuijk, F. A., Shahbazi, S. F., Noortman, W. A., Velden, F. H. P. van, Dibbets-Schneider, P., Marinelli, A. W. K. S., ... Geus-Oei, L. F. de. (2023). Baseline and early digital [F-18]FDG PET/CT and multiparametric MRI contain promising features to predict response to neoadjuvant therapy in locally advanced rectal cancer patients: a pilot study. *Nuclear Medicine Communications*, 44(7), 613-621. doi:10.1097/MNM.0000000000001703

Version: Publisher's Version
License: [Creative Commons CC BY 4.0 license](https://creativecommons.org/licenses/by/4.0/)
Downloaded from: <https://hdl.handle.net/1887/3665821>

Note: To cite this publication please use the final published version (if applicable).

Original article

Baseline and early digital [¹⁸F]FDG PET/CT and multiparametric MRI contain promising features to predict response to neoadjuvant therapy in locally advanced rectal cancer patients: a pilot study

Floris A. Vuijk^a, Shirin Feshtali Shahbazi^b, Wyanne A. Noortman^{c,d}, Floris H.P. van Velden^c, Petra Dibbets-Schneider^c, Andreas W.K.S. Marinelli^e, Peter A. Neijenhuis^f, Roderick Schmitz^g, Eidrees Ghariq^b, Laura A. Velema^h, Femke P. Peters^{h,i}, Frits Smit^c, Koen C.M.J. Peeters^a, Sofieke J.D. Temmink^a, Stijn A.L.P. Crobach^j, Hein Putter^k, Alexander L. Vahrmeijer^a, Denise E. Hilling^{a,l,m} and Lioe-Fee de Geus-Oei^{c,d,n}

Objective In this pilot study, we investigated the feasibility of response prediction using digital [¹⁸F]FDG PET/computed tomography (CT) and multiparametric MRI before, during, and after neoadjuvant chemoradiation therapy in locally advanced rectal cancer (LARC) patients and aimed to select the most promising imaging modalities and timepoints for further investigation in a larger trial.

Methods Rectal cancer patients scheduled to undergo neoadjuvant chemoradiation therapy were prospectively included in this trial, and underwent multiparametric MRI and [¹⁸F]FDG PET/CT before, 2 weeks into, and 6–8 weeks after chemoradiation therapy. Two groups were created based on pathological tumor regression grade, that is, good responders (TRG1-2) and poor responders (TRG3-5). Using binary logistic regression analysis with a cutoff value of $P \leq 0.2$, promising predictive features for response were selected.

Results Nineteen patients were included. Of these, 5 were good responders, and 14 were poor responders. Patient characteristics of these groups were similar at baseline. Fifty-seven features were extracted, of which 13 were found to be promising predictors of response. Baseline [T2: volume, diffusion-weighted imaging (DWI): apparent diffusion coefficient (ADC) mean, DWI: difference entropy], early response (T2: volume change, DWI: ADC mean change) and end-of-treatment presurgical evaluation MRI (T2: gray level nonuniformity, DWI: inverse difference normalized, DWI: gray level nonuniformity normalized), as well as baseline (metabolic tumor volume,

total lesion glycolysis) and early response PET/CT (Δ maximum standardized uptake value, Δ peak standardized uptake value corrected for lean body mass), were promising features.

Conclusion Both multiparametric MRI and [¹⁸F]FDG PET/CT contain promising imaging features to predict response to neoadjuvant chemoradiotherapy in LARC patients. A future larger trial should investigate baseline, early response, and end-of-treatment presurgical evaluation MRI and baseline and early response PET/CT. *Nucl Med Commun* 44: 613–621 Copyright © 2023 The Author(s). Published by Wolters Kluwer Health, Inc.

Nuclear Medicine Communications 2023, 44:613–621

Keywords: computed tomography, fluorodeoxyglucose, multiparametric resonance imaging, neoadjuvant therapy, PET, rectal neoplasms

^aDepartment of Surgery, Leiden University Medical Center, ^bDepartment of Radiology, Leiden University Medical Center, Leiden, ^cDepartment of Radiology, Section of Nuclear Medicine, Leiden University Medical Center, ^dBiomedical Photonic Imaging Group, University of Twente, Enschede, ^eDepartment of Surgery, Haaglanden Medisch Centrum, Den Haag, ^fDepartment of Surgery, Alrijne Ziekenhuis, Leiderdorp, ^gDepartment of Surgery, Groene Hart Ziekenhuis, Gouda, ^hDepartment of Radiation Oncology, Leiden University Medical Center, ⁱDepartment of Radiation Oncology, Antoni van Leeuwenhoek Hospital, Amsterdam, ^jDepartment of Pathology, Leiden University Medical Center, ^kDepartment of Medical Statistics, Leiden University Medical Center, Leiden, ^lDepartment of Surgical Oncology and Gastrointestinal Surgery, Erasmus MC Cancer Institute, University Medical Center Rotterdam, ^mDepartment of Surgery, IJsselland Ziekenhuis, Capelle a/d IJssel and ⁿDepartment of Radiation Science & Technology, Technical University Delft, The Netherlands

Correspondence to Lioe-Fee de Geus-Oei, MD, PhD, Department of Radiology, Section of Nuclear Medicine, Leiden University Medical Center, Albinusdreef 3, Leiden, 2333 ZA, The Netherlands
Tel: +31 71 526 34 80. e-mail: L.f.de_geus-oei@lumc.nl

Received 23 December 2022 Accepted 28 March 2023.

Supplemental Digital Content is available for this article. Direct URL citations appear in the printed text and are provided in the HTML and PDF versions of this article on the journal's website, www.nuclearmedicinecomm.com.

This is an open access article distributed under the Creative Commons Attribution License 4.0 (CCBY), which permits unrestricted use, distribution, and reproduction in any medium, provided the original work is properly cited.

Introduction

Patients diagnosed with locally advanced rectal cancer (LARC) are currently treated with neoadjuvant chemoradiotherapy (nCRT), prior to surgical resection. The goal of nCRT is to downsize and downstage rectal cancer,

thereby improving the rate of complete resections and lowering the risk of local recurrence [1]. The majority of patients have a partial tumor response after nCRT [1], while in 15–20% this even results in a pathological complete response (pCR) of all tumor tissue [1,2]. Most recently, results from the RAPIDO trial demonstrate even higher rates of pCR (28%) after neoadjuvant short-course radiotherapy followed by chemotherapy [3]. Unfortunately, not all patients respond well to nCRT, but the exact number of nonresponders is uncertain [4].

According to current guidelines, treatment stratification and response assessment are performed using MRI and in selected cases, rectoscopy [5]. MRI features include the tumor-node-metastasis stage, extramural vascular invasion (EMVI), and tumor distance to the mesorectal fascia [6]. Unfortunately, current imaging modalities are unable to predict response to nCRT accurately. In recent years, the watch-and-wait strategy has been implemented for patients with clinical complete response (cCR) after neoadjuvant therapy, with excellent long-term outcomes [1,7]. By means of improved stratification before or early after the onset of nCRT, a precise selection of patients might be possible. In patients predicted to respond well, the (watchful) waiting period before surgery could be prolonged, possibly increasing the rate of cCR. Accurate identification of cCR patients can prevent futile surgery and its associated morbidity and mortality [8]. In patients with a predicted poor response, unbeneficial continuation of nCRT, therapy-related toxicity and unwanted delay in the initiation of a potentially effective treatment could be avoided.

Currently, 2- ^{18}F fluoro-2-deoxy-D-glucose (^{18}F)FDG PET combined with computed tomography (PET/CT) is advised in the national guideline for the detection of recurrence of rectal cancer in case of increased carcinoembryonic antigen levels [9]. Many MRI and ^{18}F FDG PET/CT features have been investigated separately to predict response to nCRT before or early after the onset of nCRT [10–21]. The combination of both modalities could possibly have complimentary value to predict response. Available data in the literature are insufficient to evaluate this approach, and no studies have investigated the application of digital PET/CT in this field [13,16,19]. Owing to its increased energy resolution and time-of-flight performance, digital PET/CT has the potential to improve the quantification of small or heterogeneous tumors and thereby provide more accurate metabolic information on tumor response, and might (in combination with multiparametric MRI) facilitate improved response prediction to nCRT.

In this pilot study, we investigate the feasibility of response prediction using digital ^{18}F FDG PET/CT and multiparametric MRI before, during, and after nCRT in LARC patients and aim to determine the most promising imaging modalities and time points for further investigation.

Materials and methods

Patient population

A multicenter, nonrandomized prospective study was performed in patients admitted to the Leiden University Medical Center ($n = 8$), Haaglanden Medical Center ($n = 6$), Alrijne Hospital Leiderdorp ($n = 4$), and Groene Hart Hospital ($n = 1$), diagnosed with (biopsy proven) LARC and treated according to national guidelines. Eligible patients were selected at multidisciplinary meetings and asked for participation during their outpatient clinic visits. Treatment consisted of nCRT (25 \times 2 Gy combined with 825 mg/m² bid capecitabine 5 days per week), followed by reevaluation after 6–8 weeks. Surgery followed within 4–6 weeks after reevaluation. In case of a near complete response, reevaluation was repeated after 6–8 weeks. In the case of cCR, follow-up was initiated according to the watch-and-wait protocol [7]. The study was conducted in concordance with the Declaration of Helsinki, and was approved by the Leiden-Den Haag-Delft medical ethics review board and the local boards of participating centers. All subjects provided written informed consent. The study was registered in the Netherlands Trial Register (identification number NL-756). Including standard of care imaging (rectoscopy, MRI scan of abdomen, and CT scan of the chest and abdomen), all patients underwent ^{18}F FDG PET/CT and multiparametric MRI before nCRT, 10–14 days after nCRT onset (early response evaluation), and 6–8 weeks after the last treatment (end-of-treatment presurgical evaluation).

Data acquisition and image reconstruction

All digital ^{18}F FDG PET/CT scans of the lower abdomen were acquired on the same scanner, a Vereos PET/CT (Philips Healthcare, Best, the Netherlands). All acquisitions and reconstructions were in accordance with European Association of Nuclear Medicine (EANM) guidelines for tumor PET imaging version 2.0 [22]. Prior to PET/CT scanning, patients fasted for 6 h and were prehydrated using 1 L of water. ^{18}F FDG was dosed using the quadratic formula: 379 (MBq·min·bed⁻¹·kg⁻²) \times [patient weight (kg)/75]²/emission acquisition duration per bed position (min·bed⁻¹) with a factor of 379 MBq·min·bed⁻¹·kg⁻². Patients received 20 mg intravenous furosemide 15 min post-injection. Patients underwent a low-dose CT scan for attenuation correction 60 (55–65) min post-injection (120 kV, 35 mA_{eff}), followed by a PET scan of 5 min per bed position. Reconstructed PET images had a voxel size of 4 \times 4 \times 4 mm. Multiparametric MRI of the lower abdomen was made on various systems, and included T2- and diffusion-weighted imaging (DWI) sequences. Patients underwent bowel preparation using a 5 ml Microlax enema three hours before imaging (Johnson and Johnson, New Brunswick, New Jersey, USA). Further details are described in Supplementary Table 1, Supplemental digital content 1, <http://links.lww.com/NMC/A246>.

Quantitative image analysis

MRI assessment was performed by a board-certified abdominal radiologist (S.F.S., 11 years of experience), using Sectra IDS7 software (version 21.2; Sectra AB, Linköping, Sweden). Apparent diffusion coefficient (ADC) values were calculated from the DWI image. Volumes of interest (VOIs) were drawn manually (F.V. under the supervision of S.F.S.) to include the primary tumor on the DWI and T2 maps. Various quantitative features were extracted using 3DSlicer (version 4.11) [23] and PyRadiomics (version 3.0) which was running in Python (version 3.7; Python Software Foundation, Wilmington, Delaware, USA) [24]. First, following the methodology of Schurink *et al.* [19], the following features were extracted from the VOIs: T2 mesh volume, T2 entropy, DWI mesh volume, mean ADC, ADC entropy, and their respective response indices. Second, to allow full comparison to the results from Schurink *et al.* [19,20] and following recent promising results from Delli Pizzi *et al.* [25], 105 radiomic features were extracted from the T2 baseline images for additional radiomic analysis: shape [14], first order [18], gray level cooccurrence matrix [22], gray level run length matrix [16], gray level size zone matrix [16], gray level dependence matrix [14] and neighboring gray-tone difference matrix [5] features. Images were interpolated to isotropic voxels of $2.00 \times 2.00 \times 2.00 \text{ mm}^3$ using B-spline interpolation, with grids aligned by the input origin and only covering the VOI. Both T2 and DWI images were normalized to a mean of 300 and a SD of 100, allowing comparison of the relative gray values between patients [26]. Features were extracted using a fixed bin size, which was determined in such a way that most VOIs contained between 30 and 130 bins. This resulted in a bin size of 5 and 15 for T2 and DWI images, respectively.

PET/CT assessment was performed by a board-certified nuclear medicine physician (L.G., 25 years of experience), using Sectra IDS7 software (version 21.2; Sectra AB, Linköping, Sweden). VOIs were automatically delineated with an isocontour threshold of 50% of the maximum standardized uptake value (SUV_{max}) using IntelliSpace Portal (version 9.0; Koninklijke Philips N.V., Amsterdam, the Netherlands). The following features were included in the analysis with their corresponding response indices based on the following articles. Joye *et al.* pooled data from 25 studies investigating [¹⁸F]FDG PET/CT and found the following features to be promising predictors for response [17]: the SUV_{max} post-therapy, response indices of the SUV_{max} , the metabolic tumor volume [MTV, obtained using a peak standardized uptake value corrected for lean body mass (SUL_{peak}) threshold of 50%] and total lesion glycolysis (TLG, $\text{SUL}_{\text{mean}} \times \text{MTV}$). All features were body weighted, except SUL_{peak} , which was weighted using the lean body mass following the methodology described in PERCIST 1.0 and by O *et al* [27]. They advise the use of SUL_{peak} as exploratory data when the liver is not present in all scans. No radiomic

feature analysis was performed on data from [¹⁸F]FDG PET/CT, as this has not been described in literature before.

Pathology

Pathological assessment of the resection specimen was performed according to the Dutch national guidelines [9]. In addition to this, the extent of tumor regression was evaluated according to Mandard's tumor regression grade (TRG) by the local board-certified pathologist [28]. Mandard's TRG classifies response to given therapy into five classes based on the number of vital tumor cells and the extent of therapy-induced fibrosis. When classified TRG 1, no residual tumor cells were seen, and the patient is considered to have a pathologic complete response (pCR). A regrowth-free survival time of >6 months was considered a surrogate endpoint for TRG1 in patients with a cCR in watch-and-wait follow-up.

Statistical analysis

Statistical analysis was performed using SPSS (version 25; IBM SPSS, Inc., Chicago, Illinois, USA) and R (version 3.6.0; R Foundation for Statistical Computing, Vienna, Austria). For statistical analysis, patients were divided into two groups based on the pathological TRG or regrowth-free follow-up in the case of watch-and-wait: good responders (TRG1-2) and poor responders (TRG 3-5). Descriptive data were displayed as mean \pm SD or median (interquartile range), depending on the distribution of data. Non-parametric data were compared using the Mann-Whitney *U* test, whereas parametric data were compared using a *T*-test. Results were considered significant when $P < 0.05$. Promising imaging features were selected using binary logistic regression, after dividing through their respective SD. Due to the small sample size and large amount of tested features, MRI and PET/CT features were considered promising when a *P* value ≤ 0.2 was reached.

Unsupervised radiomic feature selection using redundancy filtering and factor analysis was performed using FMradio (Factor Modeling for Radiomics Data, package version 1.1.1; Amsterdam UMC, Amsterdam, the Netherlands), developed for R (version 3.6.0; R Foundation for Statistical Computing, Vienna, Austria) [29]. The large feature dimensionality compared to the small sample size might result in overfitting and deteriorates the generalizability of the radiomic model. Therefore, one feature was selected for every 10 subjects [30]. Features were scaled (centered around 0, variance of 1) to avoid the features with the largest value would dominate the analysis. Redundancy filtering on the Pearson correlation matrix was performed with a threshold of $\tau = 0.95$ and from each group, one feature was retained. Factor analysis of the redundancy-filtered correlation matrix was performed and two factors (19 patients) were selected per sequence and time point. The sampling

adequacy of the model was determined by the Kaiser-Meier-Olkin measure, which had to be between 0.9 and 1.0. The features with the highest loading on the factors were selected.

Results

Nineteen patients were included in the period between July 2018 and March 2020. All patients completed chemoradiotherapy, and all but one underwent surgery after an average of 14.1 ± 6.6 weeks (one cCR patient in watch-and-wait). All but one patient completed all six imaging studies: in one patient the final [^{18}F]FDG PET/CT was not performed due to logistical problems. Sixteen men and three women were included in this study with a median age of 63.1 (56.3–67.0) years old. The median follow-up time was 11.6 (9.0–17.1) months. No recurrent disease was found. One patient had a cCR without regrowth during follow-up, 4 patients had a pTRG1, 9 pTRG3, 4 pTRG4, and 1 pTRG5. On the basis of the pTRG, five patients (26.3%) were good responders, and 14 (73.7%) were poor responders. There were no significant differences at baseline between groups regarding age, sex, cT stage, cN stage, EMVI, and tumor differentiation, as summarized in Table 1.

Quantitative features

A total of 57 quantitative features were extracted. Redundancy filtering and factor analysis of the radiomic feature sets were performed and Kaiser-Meier-Olkin (KMO) measures were excellent (>0.96). The features corresponding best with the two factors per sequence and timepoint were included in the analysis.

Using binary logistic regression analysis with a predefined cutoff value of $P \leq 0.2$, 13 features were found to be promising predictors of response. At baseline imaging, three MRI and two PET/CT features were found to be promising. At early response evaluation, no promising features were found; however, two MRI and two PET/

CT early response evaluations to baseline response index features were found to be promising. At the end-of-treatment presurgical evaluation, three MRI and one PET/CT feature were found to be promising, but no response index features were promising.

These results are shown in more detail in the forest plot in Fig. 1, which displays all features with their respective odds ratios and confidence interval. It shows numerous features to have preferable odds ratios; however, only 13 have a $P \leq 0.2$. Detailed results from binary logistic regression analysis are displayed in Table 2. Figures 2 and 3 present examples of good and poor responders on sequential multimodality imaging.

Discussion

Results from this pilot study indicate that 13 out of 57 features are promising predictors of response, with baseline and early change showing the most clinically relevant features. As deduced from these results, end-of-treatment presurgical evaluation digital PET/CT was least probable to provide predictive (and clinically relevant) features. As far as we know, this is the first prospective study in LARC patients investigating the predictive value of multiparametric MRI and digital [^{18}F]FDG PET/CT, at three set time points during neoadjuvant chemoradiation.

The results from this study confirm the feasibility of response prediction using digital [^{18}F]FDG PET/CT and multiparametric MRI. These results are in line with previous reports from various small trials demonstrating the predictive value of various T2- and DW MRI and [^{18}F]FDG PET/CT features, which have up until now not resulted in clinically usable prediction models [14,17]. In contrast to our results, a recent study in 19 LARC patients found only baseline MTV and no early response evaluation features (2 weeks into nCRT) to be possible predictors of response [31]. In our study we also found baseline MTV to be a promising feature; however, we

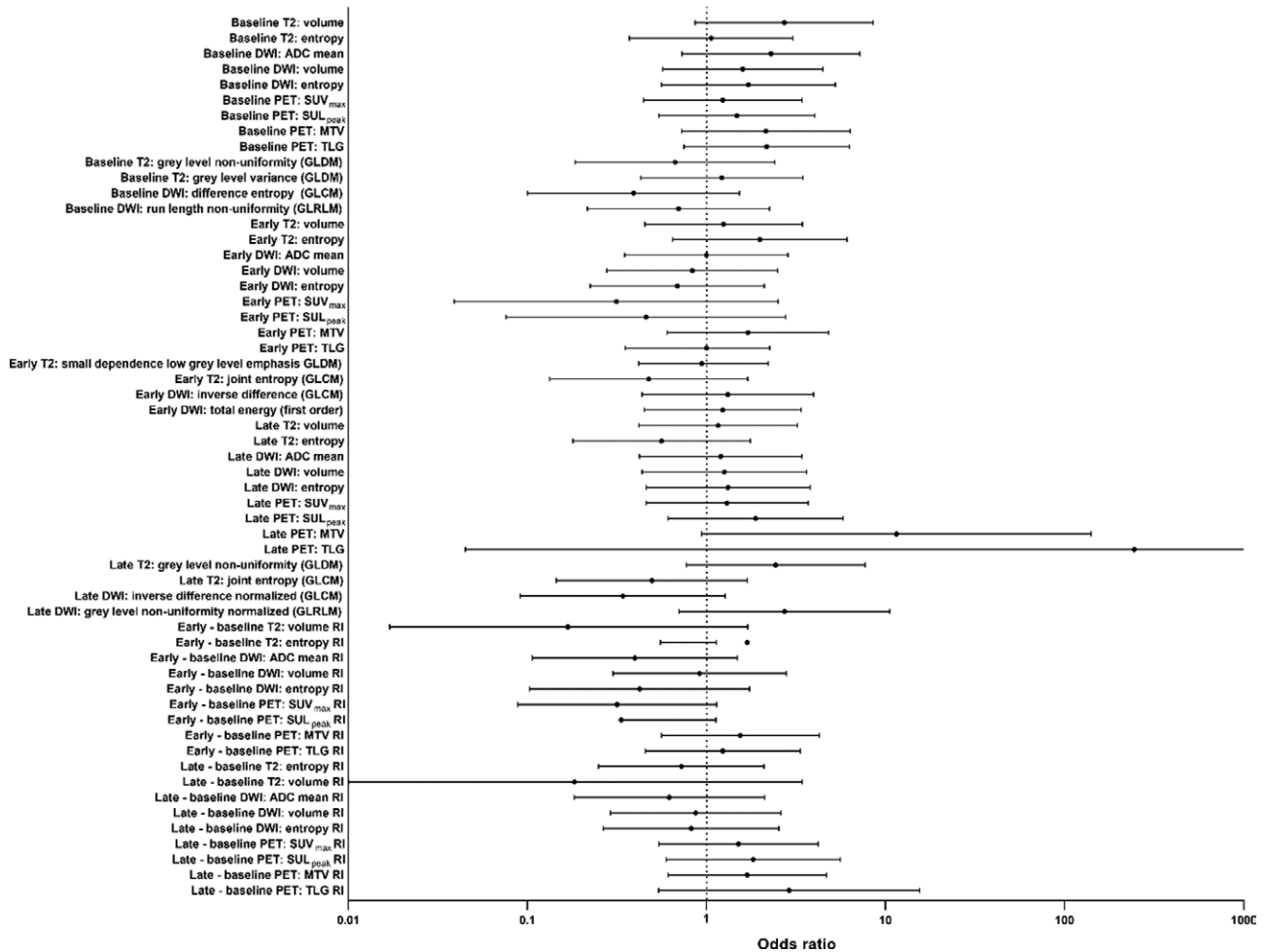
Table 1 Patient and tumor characteristics at baseline

		Good response (n = 5)	Poor response (n = 14)	P value
Age (years)	Mean \pm SD	63.6 \pm 11.08	62.9 \pm 6.12	0.273
Sex	Male	4	12	0.770
	Female	1	2	
cT	2	1	0	0.363
	3	3	10	
	4	1	4	
	0	1	2	
cN	1	0	1	1.00
	2	4	11	
	0	0	3	
EMVI	Yes	5	11	0.565
	No	0	0	
	Missing	3	13	
Differentiation (biopsy)	Well/moderate	1	0	0.071
	Poor	1	1	
	Missing	1	1	

Table shows difference between the good and poor response groups at baseline with corresponding *P* value.

cT, clinical tumor stage on routine staging MRI; cN, clinical nodal stage on routine staging MRI; EMVI, extramural vascular invasion.

Fig. 1



Forrest plot of investigated features. Figure shows odds ratio for TRG1-2 with 95% confidence intervals from binary logistical regression analyses on logarithmic scale (x-axis). ADC mean, mean apparent diffusion coefficient; DWI entropy, tumor entropy on diffusion-weighted imaging series; DWI volume, tumor volume on diffusion-weighted imaging series; MTV, metabolic tumor volume; SUL_{peak} , peak standardized uptake value corrected for lean body mass; SUV_{max} , maximum standardized uptake value; T2 entropy, tumor entropy on T2 series; T2 volume, tumor volume on T2 series; TLG, total lesion glycolysis.

also found four other baseline features (three MRI, one PET) and four early response evaluation response indices features (two MRI, two PET). Interestingly, they found more predicting features at end-of-treatment presurgical evaluation [¹⁸F]FDG PET/CT (SUV_{max} , SUV_{peak} , MTV, SUL_{peak} , TLG), whereas our study only found MTV to be a promising feature (note that the exact timing of the late evaluation [¹⁸F]FDG PET/CT in their study is unclear). As a next step towards clinical implementation, Schurink *et al.* developed prediction models including features from MRI and [¹⁸F]FDG PET/CT that were also used in the current study. The first study found an area under the curve (AUC) of 0.83 for response prediction at baseline using MRI-derived T-stage, T2 entropy, and T2 volume [19]. The second study found an AUC of 0.83 using clinical (T-stage, N-stage, age, sex, interval between nCRT and end-of-treatment presurgical evaluation) and baseline

features (T2 entropy, ADC entropy, and SUV_{mean}) [20]. Interestingly, models including radiomic features did not outperform the simpler model [20]. Moreover, radiomic analysis of PET/CT images (AUC 0.78) did outperform simpler features (SUV_{mean} , TLG, and mean Hounsfield unit, AUC 0.50) [20]; however, PET/CT radiomic analyses were performed on the CT-only images, thus questioning the added value of PET. In comparison to our study, in which MRI-based radiomic features were analyzed, we found four out of 12 radiomic features to be promising predictors of response (one baseline and three end-of-treatment presurgical evaluation features). Unfortunately, no AUC values were available due to the limited number of patients. Interestingly, the end-of-treatment presurgical evaluation [¹⁸F]FDG PET/CT was the least promising in this dataset. This might be due to the occurrence of radiation-induced proctitis interfering

Table 2 Binary logistical regression analysis of MRI and PET/computed tomography features for prediction of response

Feature	Regression coefficient	Odds ratio	Standard error	95% confidence interval		P value
				Lower limit	Upper limit	
Baseline T2: tumor volume	0.999	2.716	0.584	0.864	8.537	0.087
Baseline T2: entropy	0.06	1.062	0.536	0.371	3.037	0.911
Baseline DWI: mean ADC	0.827	2.287	0.583	0.730	7.168	0.156
Baseline DWI: tumor volume	0.464	1.591	0.525	0.568	4.456	0.377
Baseline DWI: entropy	0.537	1.711	0.570	0.559	5.231	0.347
Baseline T2: gray level nonuniformity (GLDM)	-0.405	0.667	0.655	0.185	2.408	0.536
Baseline T2: gray level variance (GLDM)	0.195	1.216	0.531	0.429	3.445	0.713
Baseline DWI: difference entropy (GLCM)	-0.940	0.391	0.695	0.100	1.527	0.177
Baseline DWI: run length nonuniformity (GLRLM)	-0.360	0.697	0.598	0.216	2.250	0.546
Baseline PET: SUV _{max}	0.210	1.233	0.520	0.445	3.418	0.687
Baseline PET: SUL _{peak}	0.388	1.475	0.511	0.541	4.016	0.447
Baseline PET: MTV	0.764	2.147	0.552	0.728	6.337	0.166
Baseline PET: TLG	0.773	2.166	0.543	0.748	6.276	0.154
Early T2: tumor volume	0.220	1.246	0.517	0.452	3.435	0.670
Early T2: entropy	0.686	1.986	0.571	0.648	6.084	0.230
Early DWI: ADC mean	-0.003	0.997	0.536	0.349	2.848	0.995
Early DWI: tumor volume	-0.184	0.832	0.561	0.277	2.497	0.743
Early DWI: entropy	-0.376	0.687	0.571	0.224	2.104	0.511
Early T2: small dependence low gray level emphasis (GLDM)	-0.061	0.941	0.414	0.418	2.120	0.883
Early T2: joint entropy (GLCM)	-0.745	0.475	0.651	0.133	1.699	0.252
Early DWI: inverse difference (GLCM)	0.273	1.314	0.563	0.436	3.957	0.628
Early DWI: total energy (first order)	0.208	1.231	0.515	0.449	3.376	0.686
Early PET: SUV _{max}	-1.159	0.314	1.061	0.039	2.508	0.274
Early PET: SUL _{peak}	-0.778	0.459	0.916	0.076	2.764	0.396
Early PET: MTV	0.532	1.702	0.529	0.603	4.803	0.315
Early PET: TLG	0.001	1.001	0.535	0.351	2.856	0.999
Late T2: tumor volume	0.150	1.161	0.520	0.419	3.221	0.774
Late T2: entropy	-0.579	0.560	0.583	0.179	1.755	0.320
Late DWI: ADC mean	0.181	1.199	0.533	0.422	3.407	0.734
Late DWI: tumor volume	0.228	1.256	0.540	0.436	3.616	0.673
Late DWI: entropy	0.276	1.318	0.539	0.459	3.788	0.608
Late T2: gray level nonuniformity (GLDM)	0.889	2.432	0.587	0.770	7.687	0.130
Late T2: joint entropy (GLCM)	-0.703	0.495	0.626	0.145	1.688	0.261
Late DWI: inverse difference normalized (GLCM)	-1.077	0.341	0.672	0.091	1.271	0.109
Late DWI: gray level nonuniformity normalized (GLRLM)	1.001	2.722	0.692	0.702	10.558	0.148
Late PET: SUV _{max}	0.263	1.301	0.531	0.459	3.686	0.621
Late PET: SUL _{peak}	0.631	1.880	0.575	0.610	5.800	0.272
Late PET: MTV	2.441	11.480	1.278	0.937	140.578	0.056
Late PET: TLG	5.499	244.488	4.385	0.045	1,320,336.926	0.210
Early - baseline T2: tumor volume RI	-1.781	0.168	1.179	0.017	1.699	0.131
Early - baseline T2: entropy RI	0.522	1.685	0.568	0.553	5.134	0.359
Early - baseline DWI: ADC mean RI	-0.923	0.397	0.673	0.106	1.486	0.170
Early - baseline DWI: tumor volume RI	-0.089	0.915	0.569	0.300	2.789	0.875
Early - baseline DWI: entropy RI	-0.860	0.423	0.721	0.103	1.738	0.233
Early - baseline PET: SUV _{max} RI	-1.150	0.316	0.653	0.088	1.139	0.078
Early - baseline PET: SUL _{peak} RI	-1.096	0.334	0.621	0.099	1.129	0.078
Early - baseline PET: MTV RI	0.434	1.543	0.518	0.559	4.259	0.402
Early - baseline PET: TLG RI	0.210	1.233	0.509	0.455	3.347	0.680
Late - baseline T2: tumor volume RI	-1.700	0.183	1.496	0.010	3.427	0.256
Late - baseline T2: entropy RI	-0.325	0.723	0.544	0.249	2.098	0.550
Late - baseline DWI: ADC mean RI	-0.480	0.619	0.626	0.182	2.110	0.443
Late - baseline DWI: tumor volume RI	-0.141	0.869	0.560	0.290	2.603	0.801
Late - baseline DWI: entropy RI	-0.198	0.821	0.575	0.266	2.533	0.731
Late - baseline PET: SUV _{max} RI	0.410	1.507	0.522	0.541	4.197	0.432
Late - baseline PET: SUL _{peak} RI	0.600	1.823	0.571	0.595	5.582	0.293
Late - baseline PET: MTV RI	0.523	1.687	0.520	0.609	4.676	0.315
Late - baseline PET: TLG RI	1.062	2.892	0.856	0.540	15.482	0.215

Table shows regression coefficient, odds ratios with confidence intervals, and P values.

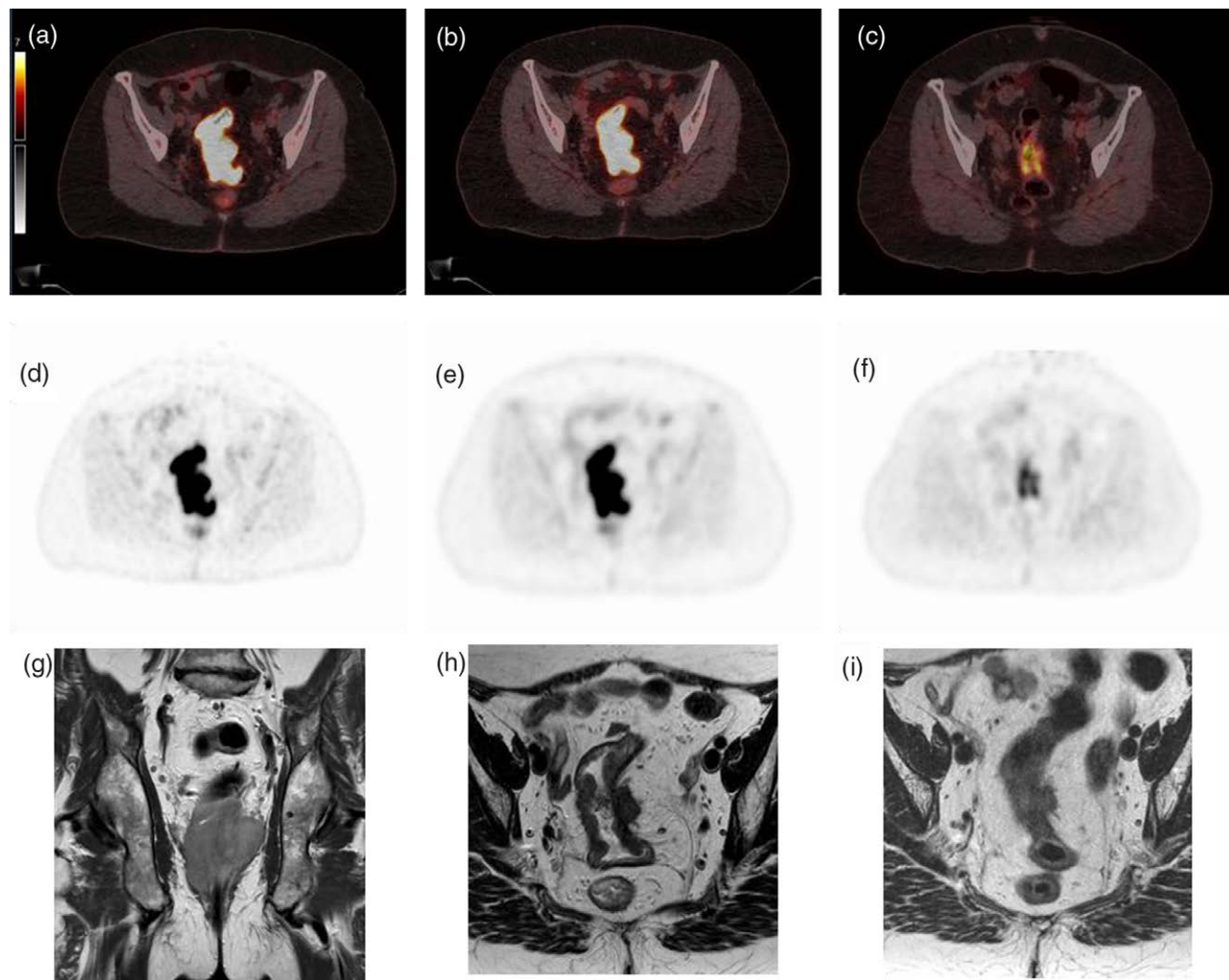
SUV_{max}, maximum standardized uptake value; SUL_{peak}, peak standardized uptake value corrected for lean body mass; MTV, metabolic tumor volume; TLG, total lesion glycolysis; T2 volume, tumor volume on T2 series; T2 entropy, tumor entropy on T2 series; DWI volume, tumor volume on diffusion-weighted imaging series; ADC mean, mean apparent diffusion coefficient; DWI entropy, tumor entropy on diffusion-weighted imaging series; GLCM: gray level cooccurrence matrix, GLDM: gray level dependence matrix, GLRLM: gray level run length matrix, RI, response index (change over time).

with end-of-treatment presurgical evaluation PET/CT, since inflammation results in increased uptake of [¹⁸F] FDG and is not present at early response evaluation yet.

Although accurate response prediction is currently challenging, the significant number of unidentified complete responders who undergo surgical resection stresses the

importance of accurate response assessment and prediction. Following our results, a future trial should include multiparametric MRI at all three time points, and [¹⁸F] FDG PET/CT at baseline and early response evaluation. Furthermore, the sample size should be sufficient to define cutoff values and develop accurate prediction models. While this study focused primarily on predicting

Fig. 2



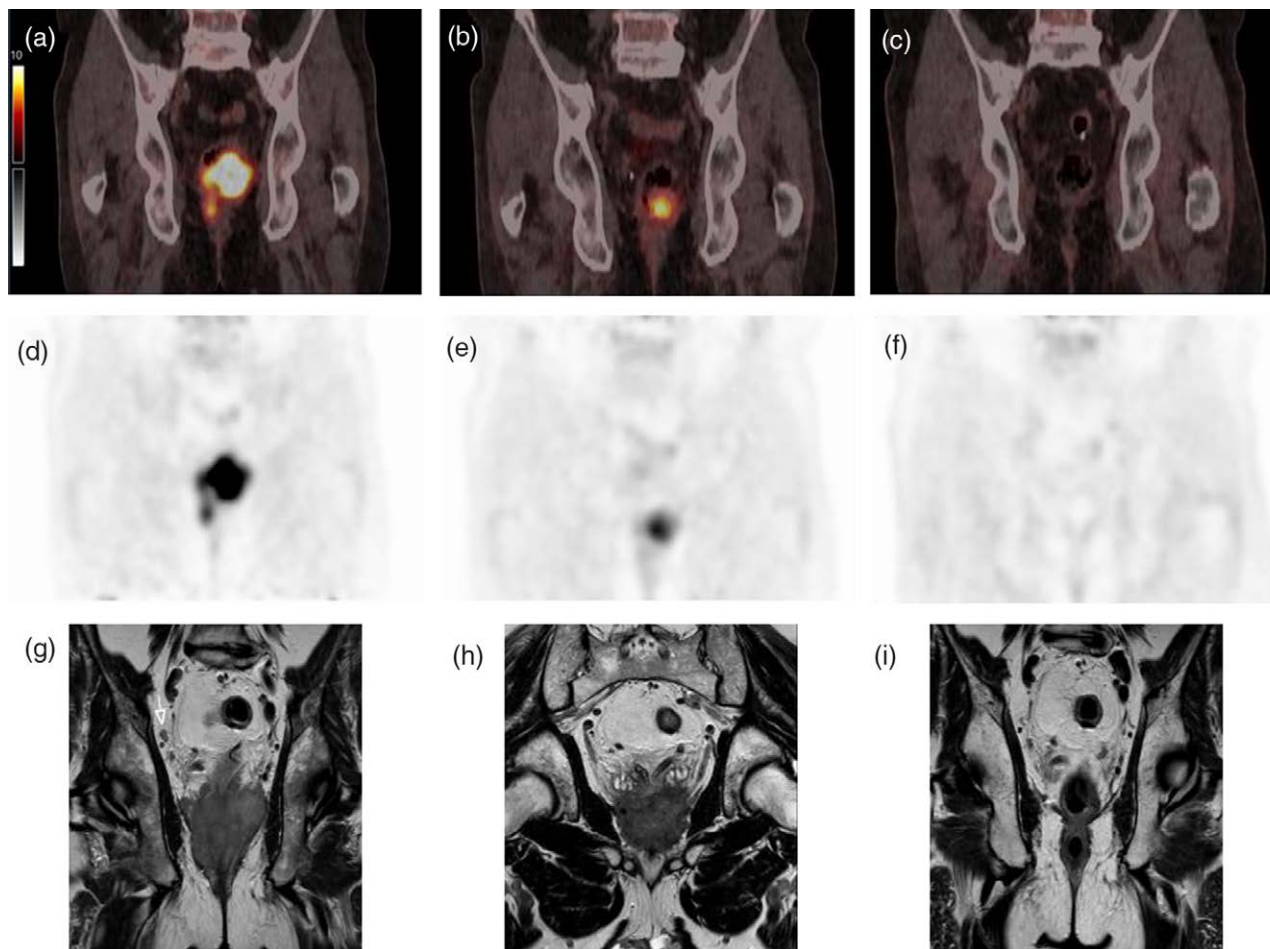
[¹⁸F]FDG PET/CT and T2 weighted MRI images of a poor responder before, during, and after neoadjuvant chemoradiotherapy. A fifty-eight-year-old woman with cT4aN2M0 rectal cancer had a partial response to chemoradiotherapy to a yT3N1M0. Pathological examination showed a ypT3N0M0 tumor and pTRG of 4. SUV_{max} was 17.8 at baseline, 17.8 at interim assessment, and 6.5 at reevaluation. Figure shows [¹⁸F]FDG PET/CT fusion (a–c) and PET-only (d–f) images as well as T2 weighted MRI (g–i) images before (a, d, g), during (b, e, h) and after (c, f, i) neoadjuvant chemoradiotherapy. CT, computed tomography; pTRG, pathological tumor regression grade; SUV_{max} , maximum standardized uptake value.

response using imaging modalities, the (combined) use of readily available predictive features such as metabolomics and analysis of biopsy material, and the integration of these in prediction models might further increase the accuracy of response prediction.

As inherent to any pilot study, this trial has various limitations. Due to the inclusion of only 19 patients and analysis of 57 features, no definite conclusions can be drawn from the data but only suggestions can be given toward design of future clinical trials. Due to the multicentric execution of this study various MRI scanners, with varying field strength, from various vendors, and with varying scanning protocols were used. This introduces heterogeneity in the quantitative MRI features. Nevertheless, this reflects the clinical routine as the acquisition of a larger

dataset of LARC patients requires inclusion from multiple hospitals. Preferably quantitative parameters would be compared from the various MRI scanners, protocols, and field strengths; however, such a dataset is currently unavailable. A previous study by Mes *et al.*, however, found minimal influence of varying signal intensities from various MRI scanners on the outcome of radiomics analysis, thus suggesting the influence of this heterogeneity to be limited [high concordance (mean 0.82 ± 0.19) for 89 radiomics features before and after gray level normalization] [32]. Most recently, Schurink *et al.* investigated the influence of multiple MRI vendors and acquisition protocols on radiomic analysis in 649 rectal cancer patients [33]. They found significant differences in image features between nine centers, with more differences found in ADC/DWI imaging compared to T2-weighted

Fig. 3



^{18}F FDG PET/CT and T2 weighted MRI images before, during, and after neoadjuvant therapy of a patient with clinical complete response. A sixty-two-year-old man with cT4bN2M0 rectal cancer had a good response to a $\gamma\text{T1-2N0M0}$ which further regressed to a γT0N0M0 6 months after chemoradiotherapy, and is currently still followed in the watch-and-wait after 12 months of recurrence-free follow-up. SUV_{max} was 18.1 at baseline, 10.4 at interim assessment, and too low to measure at reevaluation. Figure shows ^{18}F FDG PET/CT fusion (a–c) and PET-only (d–f) images as well as T2 weighted MRI (g–i) images before (a, d, g), during (b, e, h) and after (c, f, i) neoadjuvant chemoradiotherapy. CT, computed tomography; SUV_{max} , maximum standardized uptake value.

MRI. Last, inter-observer variability has been introduced as the TRG was determined by various local pathologists; however, as the data were divided into only two groups, the influence of this was deemed minimal. Future studies should take these issues into account, and either further investigate the possible influence of various scanner types and acquisition protocols, perform the study on one MRI scanner within the same institute, or develop methods to harmonize the data. Also, a future study should consider the possible shift toward the use of more short-course radiotherapy combined with systemic chemotherapy following results from the RAPIDO trial, as opposed to CRT as described by current guidelines [3]. This issue is less relevant for pooling data from ^{18}F FDG PET/CT because data are (largely) harmonized by following the EANM guidelines and only one single PET/CT scanner was used in this study [22].

In conclusion, results from this study suggest that baseline, early response and end-of-treatment presurgical evaluation MRI and baseline and early response evaluation PET/CT features are promising to predict response to neoadjuvant therapy in rectal cancer patients. These results, in combination with the clinical need for improved treatment stratification, encourage further research into response prediction using ^{18}F FDG PET/CT and multiparametric MRI.

Acknowledgements

The authors thank Lieveke Michielsens for her aid in patient selection during this trial. This study was financially supported by a European Research Council Advanced Grant (C.J.H. van de Velde, no. 323105), the Dutch Cancer Society (KWF) Bas Mulder Award (D.E.H., no. UL 2015-7966), and a Horizon2020 grant (A.L.V.,

no. 857894). F.V., S.F., W.N., F.v.V., L.G., H.P., and D.H. wrote the main manuscript text and performed the analysis. F.V., F.v.V., F.P., L.G., and D.H. were involved in the trial design. All other authors reviewed and agreed upon the manuscript. The study was conducted in accordance with the Declaration of Helsinki, and approved by the Institutional Review Board (or Ethics Committee) of Leiden Den Haag Delft. Written informed consent was obtained from all subjects (patients) in this study. Data is available upon reasonable request from the corresponding author.

Conflicts of interest

There are no conflicts of interest.

References

- Maas M, Nelemans PJ, Valentini V, Das P, Rödel C, Kuo LJ, *et al.* Long-term outcome in patients with a pathological complete response after chemoradiation for rectal cancer: a pooled analysis of individual patient data. *Lancet Oncol* 2010; **11**:835–844.
- Al-Sukhni E, Attwood K, Mattson DM, Gabriel E, Nurkin SJ. Predictors of pathologic complete response following neoadjuvant chemoradiotherapy for rectal cancer. *Ann Surg Oncol* 2016; **23**:1177–1186.
- Bahadoer RR, Dijkstra EA, van Etten B, Marijnen CAM, Putter H, Kranenburg EMK, *et al.*; RAPIDO collaborative investigators. Short-course radiotherapy followed by chemotherapy before total mesorectal excision (TME) versus preoperative chemoradiotherapy, TME, and optional adjuvant chemotherapy in locally advanced rectal cancer (RAPIDO): a randomised, open-label, phase 3 trial. *Lancet Oncol* 2021; **22**:29–42.
- Park JS, Baek JH, Lee WS, Yang JY, Lee WK, Kim KK, *et al.* Long-term oncologic outcomes in pathologic tumor response after neoadjuvant chemoradiation for locally advanced rectal cancer. *Korean J Clin Oncol* 2018; **14**:37–42.
- Beets-Tan RGH, Lambregts DMJ, Maas M, Bipat S, Barbaro B, Curvo-Semedo L, *et al.* Magnetic resonance imaging for clinical management of rectal cancer: updated recommendations from the 2016 European Society of Gastrointestinal and Abdominal Radiology (ESGAR) consensus meeting. *Eur Radiol* 2018; **28**:1465–1475.
- Landelijke Werkgroep Gastro Intestinale Tumoren. Oncoline. <https://www.oncoline.nl/colorectaalcarcinoom>. [Accessed 6 November 2019]
- van der Valk MJM, Hilling DE, Bastiaannet E, Meershoek-Klein Kranenburg E, Beets GL, Figueiredo NL, *et al.* Long-term outcomes of clinical complete responders after neoadjuvant treatment for rectal cancer in the International Watch & Wait Database (IWWD): an international multicentre registry study. *Lancet Lond Engl* 2018; **391**:2537–2545.
- Hendren SK, O'Connor BI, Liu M, Asano T, Cohen Z, Swallow CJ, *et al.* Prevalence of male and female sexual dysfunction is high following surgery for rectal cancer. *Ann Surg* 2005; **242**:212–223.
- Dutch Guideline Colorectal Cancer. Federation medical specialists. 2019. https://richtlijndatabase.nl/richtlijn/colorectaal_carcinoom_crc. [Accessed 25 December 2021]
- van Stiphout RGPM, Valentini V, Buijssen J, Lammering G, Meldolesi E, van Soest J, *et al.* Nomogram predicting response after chemoradiotherapy in rectal cancer using sequential PET/CT imaging: a multicentric prospective study with external validation. *Radiother Oncol J Eur Soc Ther Radiol Oncol* 2014; **113**:215–222.
- Janssen MHM, Öllers MC, van Stiphout RGPM, Riedl RG, van den Bogaard J, Buijssen J, *et al.* PET-based treatment response evaluation in rectal cancer: prediction and validation. *Int J Radiat Oncol Biol Phys* 2012; **82**:871–876.
- Cliffe H, Patel C, Prestwich R, Scarsbrook A. Radiotherapy response evaluation using FDG PET-CT – established and emerging applications. *Br J Radiol* 2017; **90**:20160764.
- Joye I, Debucquoy A, Deroose CM, Vandecaveye V, Cutsem EV, Wolthuis A, *et al.* Quantitative imaging outperforms molecular markers when predicting response to chemoradiotherapy for rectal cancer. *Radiother Oncol J Eur Soc Ther Radiol Oncol* 2017; **124**:104–109.
- Mahadevan LS, Zhong J, Venkatesulu B, Kaur H, Bhide S, Minsky B, *et al.* Imaging predictors of treatment outcomes in rectal cancer: an overview. *Crit Rev Oncol Hematol* 2018; **129**:153–162.
- Meng X, Huang Z, Wang R, Yu J. Prediction of response to preoperative chemoradiotherapy in patients with locally advanced rectal cancer. *Biosci Trends* 2014; **8**:11–23.
- Giannini V, Mazzetti S, Bertotto I, Chiarenza C, Cauda S, Delmastro E, *et al.* Predicting locally advanced rectal cancer response to neoadjuvant therapy with 18F-FDG PET and MRI radiomics features. *Eur J Nucl Med Mol Imaging* 2019; **46**:878–888.
- Joye I, Deroose CM, Vandecaveye V, Haustermans K. The role of diffusion-weighted MRI and (18)F-FDG PET/CT in the prediction of pathologic complete response after radiochemotherapy for rectal cancer: a systematic review. *Radiother Oncol J Eur Soc Ther Radiol Oncol* 2014; **113**:158–165.
- Avallone A, Aloj L, Pecori B, Caracò C, De Stefano A, Tatangelo F, *et al.* 18F-FDG PET/CT is an early predictor of pathologic tumor response and survival after preoperative radiochemotherapy with bevacizumab in high-risk locally advanced rectal cancer. *J Nucl Med Off Publ Soc Nucl Med* 2019; **60**:1560–1568.
- Schurink NW, Min LA, Berbee M, van Elmpt W, van Griethuysen JJM, Bakers FCH, *et al.* Value of combined multiparametric MRI and FDG-PET/CT to identify well-responding rectal cancer patients before the start of neoadjuvant chemoradiation. *Eur Radiol* 2020; **30**:2945–2954.
- Schurink NW, van Kranen SR, Berbee M, van Elmpt W, Bakers FCH, Roberti S, *et al.* Studying local tumour heterogeneity on MRI and FDG-PET/CT to predict response to neoadjuvant chemoradiotherapy in rectal cancer. *Eur Radiol* 2021; **31**:7031–7038.
- Maffione AM, Marzola MC, Capirci C, Colletti PM, Rubello D. Value of (18)F-FDG PET for predicting response to neoadjuvant therapy in rectal cancer: systematic review and meta-analysis. *AJR Am J Roentgenol* 2015; **204**:1261–1268.
- Boellaard R, Delgado-Bolton R, Oyen WJG, Giammarile F, Tatsch K, Eschner W, *et al.*; European Association of Nuclear Medicine (EANM). FDG PET/CT: EANM procedure guidelines for tumour imaging: version 2.0. *Eur J Nucl Med Mol Imaging* 2015; **42**:328–354.
- Kikinis R, Pieper SD, Vosburgh KG. 3D slicer: a platform for subject-specific image analysis, visualization, and clinical support. In: Jolesz FA, editor. *Intraoperative imaging and image-guided therapy*. Springer; 2014. pp. 277–289. https://doi.org/10.1007/978-1-4614-7657-3_19. [Accessed 16 December 2020]
- van Griethuysen JJ, Fedorov A, Parmar C, Hosny A, Aucoin N, Narayan V, *et al.* Computational radiomics system to decode the radiographic phenotype. *Cancer Res* 2017; **77**:e104–e107.
- Delli Pizzi A, Chiarelli AM, Chiacchiarreta P, d'Annibale M, Croce P, Rosa C, *et al.* MRI-based clinical-radiomics model predicts tumor response before treatment in locally advanced rectal cancer. *Sci Rep* 2021; **11**:5379.
- van Timmeren JE, Cester D, Tanadini-Lang S, Alkadhi H, Baessler B. Radiomics in medical imaging – ‘how-to’ guide and critical reflection. *Insights Imaging* 2020; **11**:91.
- O JH, Lodge MA, Wahl RL. Practical PERCIST: a simplified guide to PET response criteria in solid tumors 1.0. *Radiology* 2016; **280**:576–584.
- Mandard AM, Daibard F, Mandard JC, Marnay J, Henry-Amar M, Petiot JF, *et al.* Pathologic assessment of tumor regression after preoperative chemoradiotherapy of esophageal carcinoma. Clinicopathologic correlations. *Cancer* 1994; **73**:2680–2686.
- Peeters C, Übelhör C, Mes S, Martens R, Koopman T, Graaf P, *et al.* Stable prediction with radiomics data. 2019.
- Gillies RJ, Kinahan PE, Hricak H. Radiomics: images are more than pictures, they are data. *Radiology* 2016; **278**:563–577.
- Uslu-Beşli L, Mermut O, Yardimci AH, Gündoğan C, Gürsu RU, Çermik TF. Comparison of 18F-FDG PET/CT and DW-MRI in assessment of neoadjuvant radiochemotherapy response in locally advanced rectal cancer patients. *Rev Espanola Med Nucl E Imagen Mol* 2021; **40**:19–29.
- Mes SW, van Velden FHP, Peltenburg B, Peeters CFW, Te Beest DE, van de Wiel MA, *et al.* Outcome prediction of head and neck squamous cell carcinoma by MRI radiomic signatures. *Eur Radiol* 2020; **30**:6311–6321.
- Schurink NW, van Kranen SR, Roberti S, van Griethuysen JJM, Bogveradze N, Castagnoli F, *et al.* Sources of variation in multicenter rectal MRI data and their effect on radiomics feature reproducibility. *Eur Radiol* 2022; **32**:1506–1516.