



Universiteit
Leiden

The Netherlands

Disentangling the relationship between depression, obesity and cardiometabolic disease

Alshehri, T.

Citation

Alshehri, T. (2023, November 30). *Disentangling the relationship between depression, obesity and cardiometabolic disease*. Retrieved from <https://hdl.handle.net/1887/3665477>

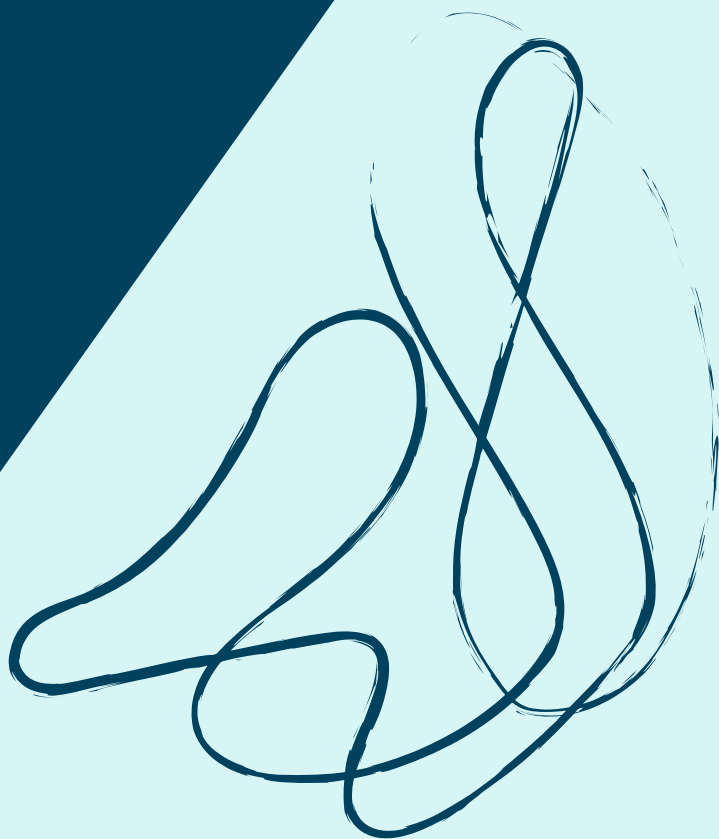
Version: Publisher's Version

License: [Licence agreement concerning inclusion of doctoral thesis in the Institutional Repository of the University of Leiden](#)

Downloaded from: <https://hdl.handle.net/1887/3665477>

Note: To cite this publication please use the final published version (if applicable).

**DISENTANGLING THE
RELATIONSHIP BETWEEN
DEPRESSION, OBESITY
AND CARDIOMETABOLIC
DISEASE**



Tahani Alshehri