



Universiteit
Leiden
The Netherlands

Innate immunity, developmental speed and their trade-offs in two hexapod models

Cheng, S.

Citation

Cheng, S. (2023, November 28). *Innate immunity, developmental speed and their trade-offs in two hexapod models*. Retrieved from <https://hdl.handle.net/1887/3665319>

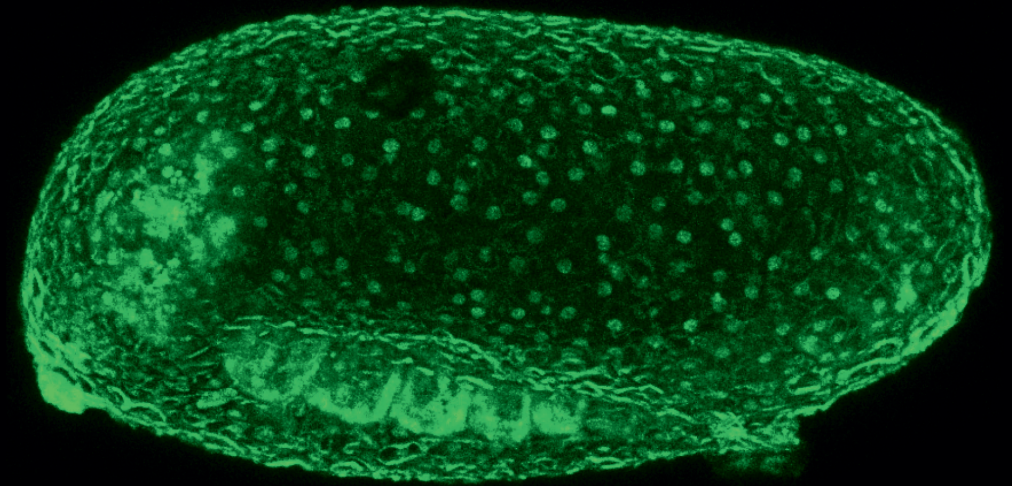
Version: Publisher's Version

License: [Licence agreement concerning inclusion of doctoral thesis in the Institutional Repository of the University of Leiden](#)

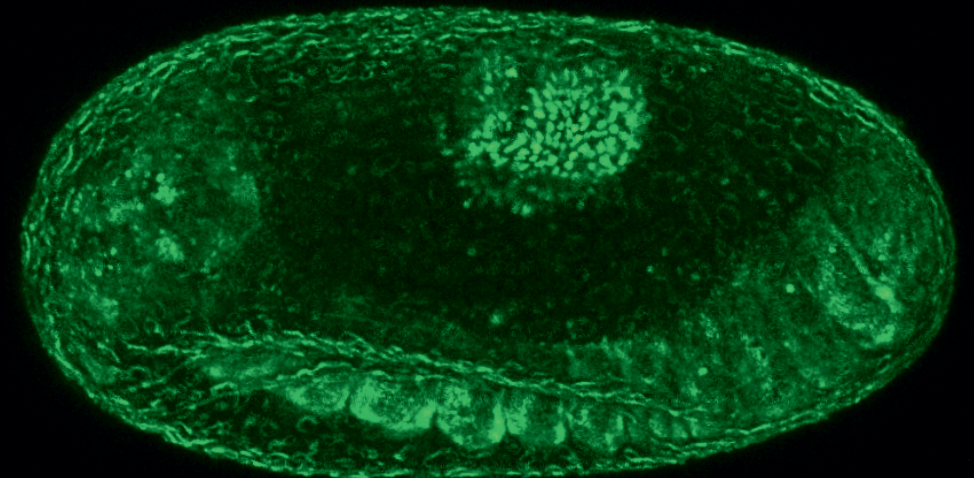
Downloaded from: <https://hdl.handle.net/1887/3665319>

Note: To cite this publication please use the final published version (if applicable).

Innate immunity, developmental speed and their trade-offs in two hexapod models



Shixiong Cheng (程世雄)



INNATE IMMUNITY, DEVELOPMENTAL SPEED AND THEIR TRADE-OFFS IN TWO HEXAPOD MODELS | Shixiong Cheng

Leiden, the Netherlands, 2023