



Universiteit
Leiden

The Netherlands

Evolutionary adaptability of β -lactamase: a study of inhibitor susceptibility in various model systems

Alen, I. van

Citation

Alen, I. van. (2023, September 20). *Evolutionary adaptability of β -lactamase: a study of inhibitor susceptibility in various model systems*. Retrieved from <https://hdl.handle.net/1887/3641470>

Version: Publisher's Version

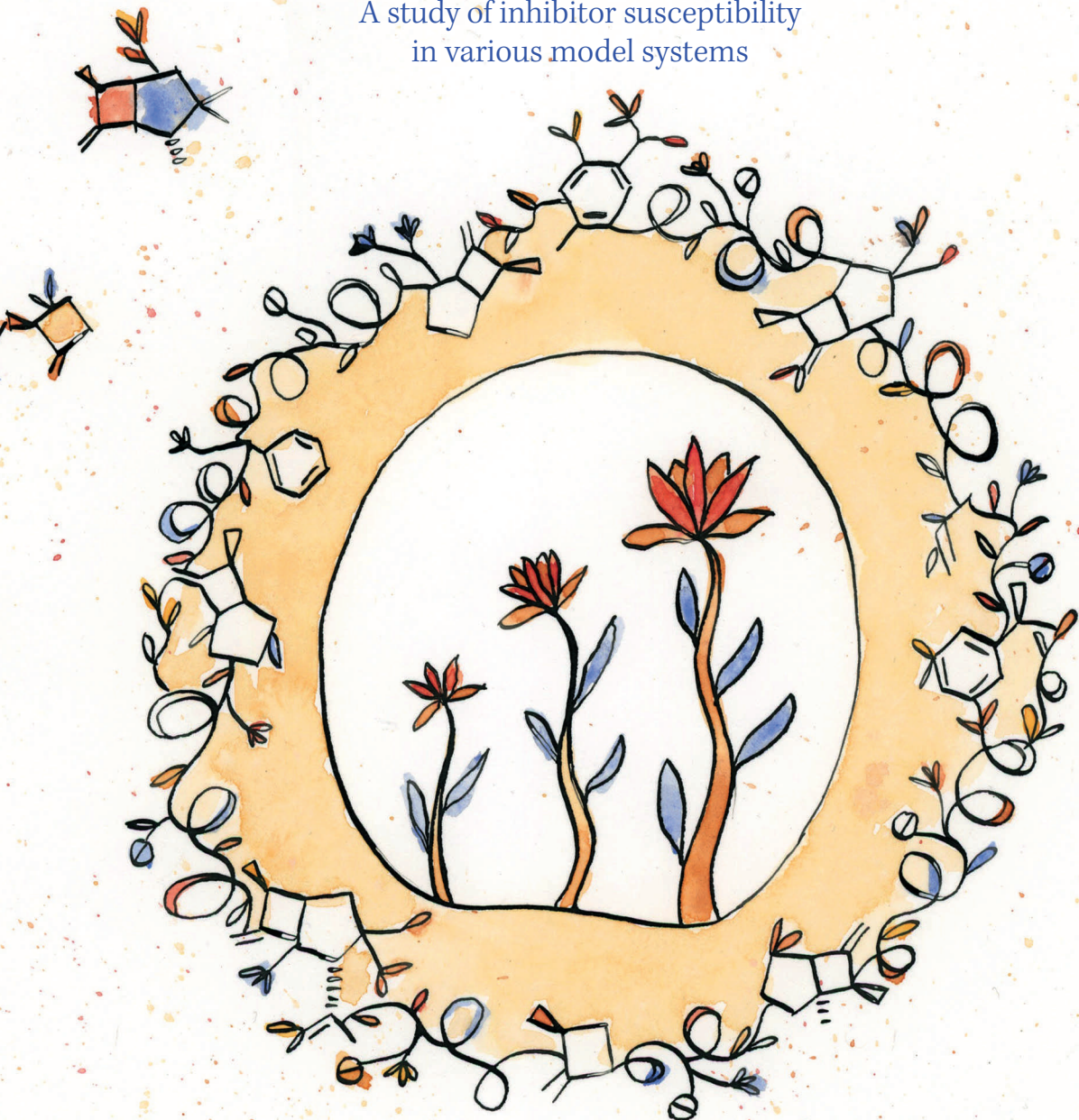
License: [Licence agreement concerning inclusion of doctoral thesis in the Institutional Repository of the University of Leiden](#)

Downloaded from: <https://hdl.handle.net/1887/3641470>

Note: To cite this publication please use the final published version (if applicable).

Evolutionary adaptability of β -lactamase

A study of inhibitor susceptibility
in various model systems



Ilona van Alen