



Universiteit
Leiden
The Netherlands

Coronary heart disease on coronary computed tomography angiography: in search of the vulnerable patient

Rosendael, S.E. van

Citation

Rosendael, S. E. van. (2023, September 7). *Coronary heart disease on coronary computed tomography angiography: in search of the vulnerable patient*.

Version: Publisher's Version

License: [Licence agreement concerning inclusion of doctoral thesis in the Institutional Repository of the University of Leiden](#)

Downloaded
from:

Note: To cite this publication please use the final published version (if applicable).

CHAPTER 2

Vessel and sex differences in pericoronary adipose tissue attenuation obtained with coronary CT in individuals without coronary atherosclerosis

Sophie E. van Rosendael, MD; Jurrien H. Kuneman, MD; Inge J. van den Hoogen MD; Pieter H. Kitslaar; Alexander R. van Rosendael, MD; Pieter van der Bijl, MD, PhD; Johan H. C. Reiber, PhD; Nina Ajmone Marsan, MD, PhD; J. Wouter Jukema, MD, PhD; Juhani Knuuti, MD, PhD; Jeroen J. Bax MD, PhD

INT J CARDIOVASC IMAGING. 2022 DEC;38(12):2781-2789.

Abstract

Introduction

Pericoronary adipose tissue (PCAT) attenuation, derived from coronary computed tomography angiography (CCTA), is associated with coronary artery inflammation. Values for PCAT attenuation in men and women without atherosclerosis on CCTA are lacking. The aim of the current study was to assess the mean PCAT attenuation in individuals without coronary artery atherosclerosis on CCTA.

Methods

Data on PCAT attenuation in men and women without coronary artery atherosclerosis on CCTA were included in this retrospective analysis. The PCAT attenuation was analyzed from the proximal part of the right coronary artery (RCA), the left anterior descending artery (LAD), and the left circumflex artery (LCx). For patient level analyses the mean PCAT attenuation was defined as the mean of the three coronary arteries.

Results

In 109 individuals (mean age 45 ± 13 years; 44% men), 320 coronary arteries were analyzed. The mean PCAT attenuation of the overall population was -64.4 ± 8.0 HU. The mean PCAT attenuation was significantly lower in the LAD compared with the LCx and RCA (-67.8 ± 7.8 HU vs. -62.6 ± 6.8 HU vs. -63.6 ± 7.9 HU, respectively, $p < 0.001$). In addition, the mean PCAT attenuation was significantly higher in men vs. women in all three coronary arteries (LAD: -65.7 ± 7.6 HU vs. -69.4 ± 7.6 HU, $p = 0.014$; LCx: -60.6 ± 7.4 HU vs. -64.3 ± 5.9 HU, $p = 0.008$; RCA: -61.7 ± 7.9 HU vs. -65.0 ± 7.7 HU, $p = 0.029$, respectively).

Conclusion

The current study provides mean PCAT attenuation values, derived from individuals without CAD. Moreover, the mean PCAT attenuation is lower in women vs. men. Furthermore, the mean PCAT attenuation is significantly lower in the LAD vs. LCx and RCA.

Keywords: coronary artery disease; coronary computed tomography angiography; pericoronary adipose tissue attenuation; perivascular inflammation.

Abbreviations:

CAD = coronary artery disease

CCTA = coronary computed tomography angiography

LAD = left anterior descending artery

LCx = left circumflex artery

LM = left main artery

PCAT = pericoronary adipose tissue

RCA = right coronary artery

Introduction

Vascular inflammation contributes to coronary atherosclerotic plaque formation and atherosclerotic plaque rupture.^{1,2,3} Over the past years, the link between pericoronary adipose tissue (PCAT) associated inflammation and atherosclerosis has been demonstrated in several studies.⁴⁻⁶ PCAT attenuation reflects vascular inflammation, which is associated with unstable plaque features and is considered a sensitive inflammatory biomarker which may improve cardiovascular risk stratification.^{4,7} Vascular inflammation can influence adipocyte lipid content through paracrine signalling by affecting biological processes such as adipocyte differentiation, proliferation and lipolysis in adjacent perivascular fat.^{4,8} Moreover, Antonopoulos et al⁴ demonstrated an inverse association of PCAT attenuation on coronary computed tomography angiography (CCTA) with histological adipocyte size and degree of adipocyte differentiation. Moreover, the authors demonstrated that PCAT with higher attenuation values on CCTA was correlated with smaller adipocytes with lower lipid content.⁴ Many previous studies assessed PCAT attenuation in patients with atherosclerotic coronary arteries, whereas PCAT attenuation values in individuals without coronary atherosclerosis are lacking. Accordingly, the purpose of the current study is to evaluate the PCAT attenuation in the right coronary artery (RCA), the left anterior descending artery (LAD) and the left circumflex artery (LCx) in individuals without coronary atherosclerosis, to establish reference values.

Methods

Study design and participants

Consecutive individuals without coronary atherosclerosis on CCTA at the Leiden University Medical Centre (Leiden, The Netherlands) between 2012 and 2015 were identified and included in this retrospective, observational analysis. Individuals with suboptimal CCTA image quality or coronary anomalies, as well as individuals who had a CCTA scan at a tube voltage of 135 kV, were excluded (Figure 1). Baseline clinical demographic characteristics including medication use and cardiovascular risk factors were reported. The current study was conducted in accordance with the Declaration of Helsinki. The study protocol was approved by the local ethics committee, who waived the need for written informed consent.

CCTA image acquisition

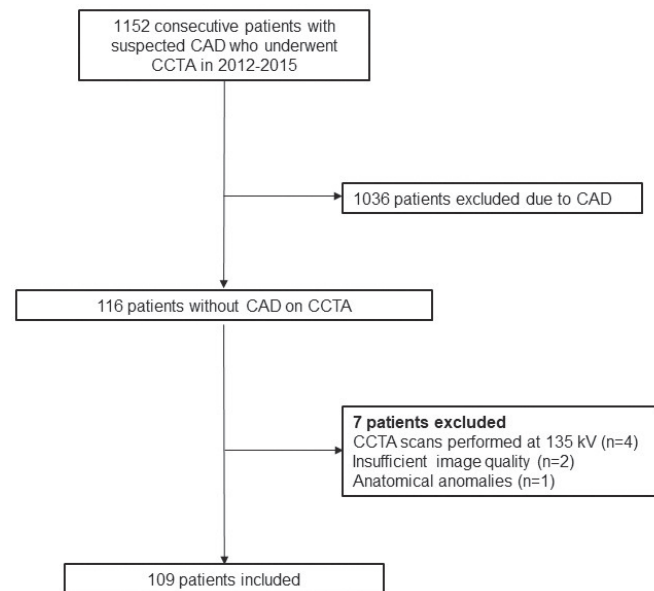
All CCTA scans were performed with a 320-slice multi-detector computed tomography scanner (Aquilion ONE, Toshiba Medical Systems, Otawara, Japan) with a gantry rotation time of 350ms. Tube voltage and tube current varied from 100-120 kV and 150-640 mA, depending on the individual's size. If the heart rate before the CCTA scan was >65 beats per minute, 25-150 mg of oral metoprolol was administered 1 hour before the CCTA scan, unless contraindicated. If the heart rate remained >65 beats per minute during the CCTA scan, up to 10 mg of intravenous metoprolol was administered additionally. Sublingual nitroglycerin (400-800 mg) was administered to all individuals before the scan.

CCTA analysis

Anatomical CCTA evaluation was performed using the 17-segment modified American Heart Association model.⁹ Quantitative CCTA analysis was performed using dedicated software (QAngio CT Research Edition version 3.2.0.13; Medis Medical Imaging Systems, Leiden, The Netherlands). In brief, a 3-dimensional coronary tree was derived from the CCTA images. All coronary arteries with a diameter of ≥ 1.5 mm were evaluated for the presence of atherosclerosis. For each coronary artery, multiplanar reconstructions were created. Lumen and vessel wall contours were automatically detected, with manual correction of the lumen vessel contours if needed.¹⁰ The presence of coronary atherosclerosis was defined as a tissue structure >1 mm² within or adjacent to the coronary artery lumen that could be distinguished from surrounding pericardial tissue, epicardial fat, or the vessel lumen itself.¹¹

Figure 1. Study flowchart.

CAD = coronary artery disease; kV = kilovoltage; CCTA = coronary computed tomography angiography



Pericoronary adipose tissue attenuation analysis

The mean pericoronary adipose tissue (PCAT) attenuation was evaluated in all three major epicardial coronary arteries using dedicated software (QAngio CT Research Edition version 3.2.0.13, Medis Medical Imaging Systems, Leiden, The Netherlands). The PCAT was defined as the area with an attenuation between -30 and -190 Hounsfield Units (HU) within a radial distance from the outer vessel wall equivalent to the diameter of the vessel.^{4,7} The proximal 40 mm segments of the LAD and LCx were analyzed (Figure 2). The proximal 10 to 50 mm segment of the RCA was evaluated, in order to avoid effects of the aortic wall (Figure 2).⁴ To adjust for differences in attenuation between scans performed at different tube voltages, the mean PCAT attenuation of CCTA

scans performed at 100 kV was divided by a conversion factor of 1.11485.^{4,12} At a per-patient level, the mean PCAT attenuation was defined as the average of the three major coronary arteries. A minimal artery length of 40 mm was necessary for PCAT attenuation measurements.

Statistical analysis

SPSS version 25 (IBM SPSS Statistics, IBM Corporation, Armonk, New York, USA) was used for statistical analyses. Continuous variables with a normal distribution are presented as mean \pm standard deviation and were compared using the Student t-test or the one-way ANOVA test, as appropriate. The Bonferroni correction was applied in case of a significant difference in the overall three group comparison. Distribution of continuous variables was evaluated using histograms. Categorical variables are presented as absolute numbers and percentages and were compared using the χ^2 test. The correlation of the mean PCAT attenuation between the various epicardial coronary arteries was evaluated using the Pearson correlation test. Linear regression analyses were performed to investigate the association between mean PCAT attenuation and sex, adjusted for smoking status. A two-sided p-value <0.05 was considered significant.

Figure 2. Pericoronary Adipose Tissue (PCAT) analysis of the proximal segments of the left anterior descending artery (LAD), the left circumflex artery (LCx) and the right coronary artery (RCA). Including corresponding pericoronary adipose tissue colour maps and cross-sectional views of the start and end point of the analyzed segments.

HU=Hounsfield unit.

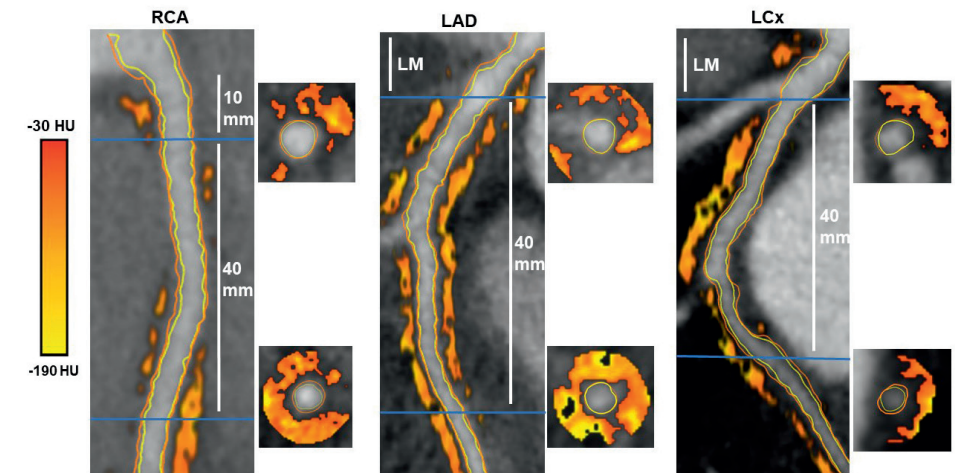


Table 1: Baseline characteristics of the population and according to sex

	Overall population (n=109)	Men (n=48)	Women (n=61)	p-value
Age, years	45 ± 13	44 ± 13	46 ± 13	0.426
BMI, kg/m ²	24.6 ± 3.8	24.6 ± 3.6	24.7 ± 3.9	0.850
Symptoms, n (%)				
Typical angina	5 (4.6)	2 (4.2)	3 (4.9)	0.852
Atypical angina	39 (35.8)	14 (29.2)	25 (41.0)	0.201
Non-anginal	21 (19.2)	9 (18.8)	12 (19.7)	0.904
No pain	44 (40.4)	23 (47.9)	21 (34.4)	0.154
Dyspnea	7 (6.4)	2 (4.2)	5 (8.2)	0.394
Cardiac risk factors, n (%)				
Hypertension	28 (25.7)	8 (16.7)	20 (32.8)	0.056
Dyslipidemia	13 (11.9)	6 (12.5)	7 (11.5)	0.870
Diabetes mellitus	12 (11)	5 (10.4)	7 (11.5)	0.861
Family history of CAD	46 (42.4)	23 (47.9)	23 (37.7)	0.284
Current smoking	20 (18.3)	13 (27.1)	7 (11.5)	0.037
Obesity	12 (11.1)	3 (6.4)	9 (14.8)	0.150
Cardiovascular medication, n (%)				
Aspirin	15 (13.8)	9 (9.5)	24 (18.9)	0.801
Beta-blockers	6 (5.4)	10 (20.8)	18 (29.5)	0.333
Calcium channel blockers	28 (25.7)	1 (2.1)	4 (6.6)	0.277
ACE-inhibitors or angiotensin II receptor blockers	5 (4.6)	4 (8.3)	10 (16.4)	0.227
Diuretics	6 (5.4)	0 (0)	6 (9.8)	0.027
Statins	16 (14.7)	5 (10.4)	11 (18)	0.284
Tube voltage, n (%)				
100 kV	80 (74.1)	35 (74.4)	45 (73.8)	0.935
120 kV	28 (25.9)	12 (25.5)	16 (26.2)	0.935

Data are presented as mean ± SD and n (%). BMI = Body mass index; CAD = coronary artery disease; kV = kilovoltage.

Results

Baseline characteristics

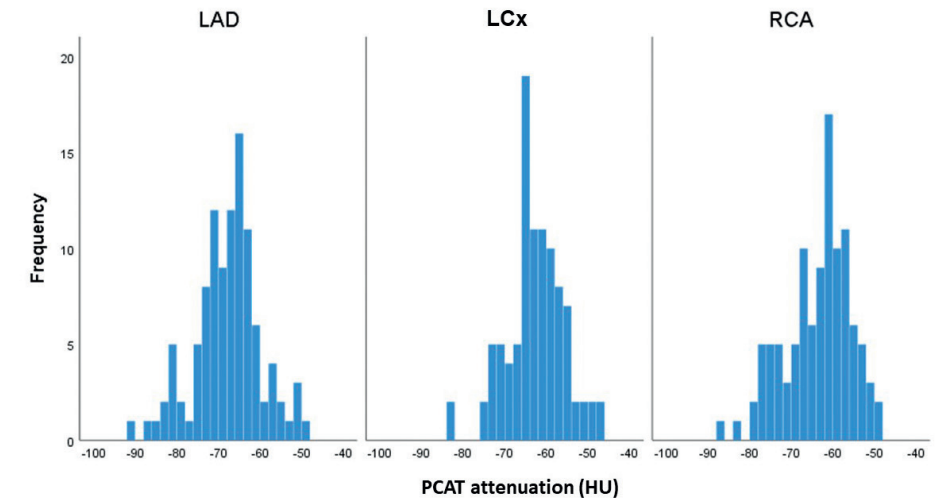
In total, 109 individuals (mean age 45±13 years; 44% male) including 320 coronary arteries without atherosclerosis on CCTA were included. A flowchart of the population is displayed in Figure 1. Seven coronary arteries (LCx: n=5, RCA: n=2) were too small for PCAT attenuation analysis and were excluded. Baseline demographic and clinical characteristics of the overall population and

according to sex are shown in Table 1. Of the overall population, hypertension was present in 28 (25.7%) and dyslipidemia in 13 individuals (11.9%). Men were more often smokers as compared to women (27.1% vs. 11.5%, p=0.037).

Pericoronary adipose tissue attenuation

The mean PCAT attenuation of the overall population was -64.4 ± 8.0 HU. The distribution of the mean PCAT attenuation around the epicardial coronary arteries is shown in Figure 3. The mean PCAT attenuation was significantly lower in the LAD vs. the LCx and vs. the RCA (-67.8 ± 7.8 HU vs. -62.6 ± 6.8 HU vs. -63.6 ± 7.9 HU, respectively, p<0.001, Figure 4). In addition, no significant correlations existed between the three individual coronary arteries with regard to the mean PCAT attenuation (Appendix Figure 1).

Figure 3. Distribution of the mean pericoronary adipose tissue (PCAT) attenuation of the left anterior descending artery (LAD), the left circumflex artery (LCx) and the right coronary artery (RCA).



Sex differences in pericoronary adipose tissue

At a per-person level, the mean PCAT attenuation was significantly higher in men as compared to women (-62.7 ± 7.9 HU vs. -66.3 ± 7.5 HU, p<0.001). Moreover, this sex-related difference in mean PCAT attenuation was noted in each of the three epicardial coronary arteries (LAD: -65.7 ± 7.6 HU vs. -69.4 ± 7.6 HU, p=0.014; LCx: -60.6 ± 7.4 HU vs. -64.3 ± 5.9 HU, p=0.008; RCA: -61.7 ± 7.9 HU vs. -65.0 ± 7.7 HU, p=0.029, respectively, Figure 5). Sex remained independently associated with the mean PCAT attenuation after adjustment for smoking status (β coefficient: 3.3 (95% Confidence Interval: 1.56; 5.07, p<0.001).

Figure 4. The comparison of the mean pericoronary adipose tissue (PCAT) attenuation among the left anterior descending artery (LAD), the left circumflex artery (LCx) and the right coronary artery (RCA).

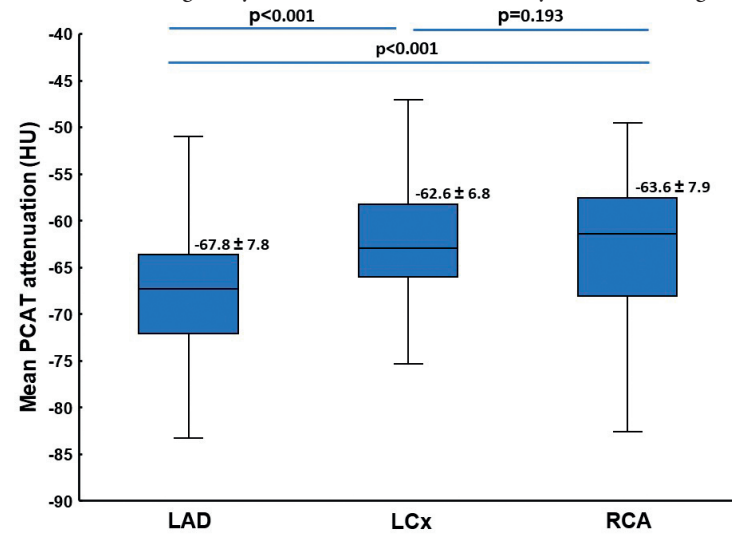
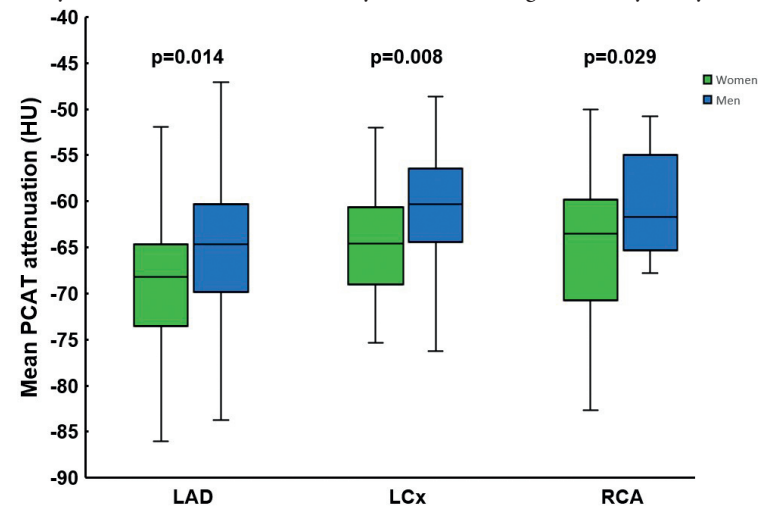


Figure 5. The mean pericoronary adipose tissue (PCAT) attenuation among the left anterior descending artery (LAD), the left circumflex artery (LCx) and the right coronary artery (RCA) according to sex.



Discussion

The current study assessed the mean PCAT attenuation in individuals without coronary atherosclerosis. The results demonstrate that the mean PCAT attenuation is significantly different between the LAD and RCA, and between the LAD and LCx. In addition, mean PCAT attenuation values were significantly higher in men compared to women in all three coronary arteries.

Previous studies have shown that many coronary artery plaque ruptures arise from non-obstructive atherosclerotic lesions.¹³ Consequently, early identification of potentially vulnerable atherosclerotic lesions becomes increasingly relevant. Detection and quantification of vascular inflammation may further improve early risk stratification of patients, possibly even before the development of significant coronary artery plaques. Previous studies have shown the feasibility of non-invasive assessment of PCAT attenuation with CCTA for the detection of vascular inflammation.⁴⁻⁶ Specifically, significant differences in PCAT attenuation have been shown between diseased and non-diseased coronary arteries.¹⁴ Moreover, increased PCAT attenuation has been demonstrated between culprit and non-culprit lesions in patients who subsequently developed an acute myocardial infarction.¹⁵ In addition, PCAT attenuation was also increased in patients with flow-limiting coronary artery lesions as compared to patients with non-flow limiting lesions.^{5,6}

Information regarding PCAT attenuation values in coronaries without atherosclerosis is lacking. A prior study evaluating mean PCAT attenuation values in patients without CAD, showed slightly lower values in the non-atherosclerotic coronary arteries, compared to coronary arteries with CAD.¹⁴

Differences in PCAT attenuation among the different coronary arteries

In the current study, significant differences in mean PCAT attenuation between the coronary arteries were observed. Mean PCAT attenuation around the proximal LAD was lower compared to the RCA and LCx. This could potentially be explained by differences in anatomy between the three coronary arteries. Furthermore, studies showed that among the three coronary arteries, the LAD is predominantly and earlier subject to atherosclerosis.^{16-18,19} In addition, higher plaque and calcium deposit burden were observed in the LAD compared to the RCA and LCx.²⁰⁻²² The lower PCAT attenuation values in the LAD from our study, may suggest that PCAT attenuation could be linked to vessel vulnerability for CAD.

Ma et al.¹⁴ analyzed all three coronary arteries and found lower PCAT attenuation values in the LAD as well. In addition, Gaibazzi et al.²³ showed significant differences between the LAD/RCA and the LCx in vessels with no or <50% coronary artery stenosis at CCTA. The CRISP-CT study that incorporated PCAT attenuation in calculating the fat attenuation index (FAI) using a proprietary algorithm (CaRiHEART, Carito Diagnostics, Oxford, United Kingdom), showed no difference in perivascular FAI values between the three coronary arteries in patients with suspected CAD, but observed a difference in prognostic value between the three coronaries.⁷

Previous studies mainly focused on the RCA to represent overall pericoronary attenuation, without evaluating potential differences between the RCA, LAD and LCx.^{6,15,24-26} The proximal RCA is characterized by the absence of confounding non-fatty structures such as side branches, coronary veins, or myocardium, and also by the highest volume of surrounding adipose tissue.^{4,27} However, the current findings suggest that the mean PCAT attenuation measurement of the RCA is not interchangeable with the other coronary arteries.

Sex differences in PCAT attenuation

In the current study a significant difference in PCAT attenuation was noted between men and women. This observation is in agreement with results published recently by Ma et al¹⁴ and Tzolos et al²⁸, showing significantly increased PCAT attenuation values in men versus women. Men are known to have an increased risk of developing CAD than women, and at a younger age.^{29,30} Increased PCAT attenuation in men might reflect an increased burden of coronary artery inflammation, that contributes to the progression of coronary atherosclerosis. Additionally, sex-specific hormones may further contribute to the increased PCAT attenuation in men.³¹

Notably, the PCAT values obtained in present study are higher than those reported in previous studies. PCAT is relatively novel and many factors may influence this parameter. Considering technical factors, van Diemen et al.³² showed significant differences in mean PCAT attenuation based on the CT scanner type used. Mean PCAT attenuation values using 64- and 256-slice CT scanners were -72.2 HU and -80.2 HU, respectively. Another key factor affecting the absolute PCAT attenuation is the kV setting and should be taken into account when evaluating PCAT attenuation. A higher tube voltage is associated with higher PCAT values¹⁴. Using different tube voltages necessitates adjustment for differences in PCAT attenuation as previously validated¹², but this is only done by a limited amount of studies^{7,33}. Furthermore, PCAT attenuation is quantified in different centres by different software packages.

We think that absolute values of PCAT attenuation on CCTA need to be tested and validated across different CT scanners, tube voltages and software packages in different centres before standardized thresholds for PCAT attenuation can be defined and clinical application is possible.

Study limitations

This is a single-centre, retrospective observational study with a limited patient cohort. The observational design of the study has inherent limitations including selection bias and unmeasured confounding. Furthermore, this study could not characterize the patients regarding their ethnicity and explore ethnic differences in PCAT attenuation.

Conclusions

PCAT attenuation values were derived from CCTA images of coronary arteries without atherosclerosis. Mean PCAT attenuation differed significantly between the three coronary arteries and mean PCAT attenuation was significantly higher in men compared to women.

References

- Ross R, Atherosclerosis: An inflammatory disease. *N Engl J Med.* 1999;340:115-126. DOI: 10.1056/NEJM199901143400207
- Hansson GK. Inflammation, atherosclerosis, and coronary artery disease. *N Engl J Med.* 2005;362(16):1685-1695. DOI: 10.1056/NEJMra043430.
- Galkina E, Ley K. Immune and inflammatory mechanisms of atherosclerosis (*). *Annu Rev Immunol.* 2009;27:165-197. DOI: 10.1146/annurev.immunol.021908.132620
- Antonopoulos AS, Sanna F, Sabharwal N, et al. Detecting human coronary inflammation by imaging perivascular fat. *Sci Transl Med.* 2017;Vol 9(Issue 398)
- Yu M, Dai X, Deng J, et al. Diagnostic performance of perivascular fat attenuation index to predict hemodynamic significance of coronary stenosis: a preliminary coronary computed tomography angiography study. *Eur Radiol* 2020;30:673-681. DOI: 10.1007/s00330-019-06400-8.
- Goeller M, Tamarappoo BK, Kwan AC, et al. Relationship between changes in pericoronary adipose tissue attenuation and coronary plaque burden quantified from coronary computed tomography angiography. *Eur Heart J Cardiovasc Imaging.* 2019;20:636-43.
- Oikonomou EK, Marwan M, Desai MY, Mancio J, Alashi A, Hutt Centeno E, et al. Non-invasive detection of coronary inflammation using computed tomography and prediction of residual cardiovascular risk (the CRISP CT study): a posthoc analysis of prospective outcome data. *Lancet* 2018;392(10151):929-939
- Grant RW, Stephens JM. Fat in flames: influence of cytokines and pattern recognition receptors on adipocyte lipolysis. *Am J Physiol Endocrinol Metab.* 2015;309:E205-213.
- Austen WG, Edwards JE, Frye RL, et al. A reporting system on patients evaluated for coronary artery disease. Report of the Ad Hoc committee for grading of coronary artery disease, council on cardiovascular surgery, American Heart Association. *Circulation.* 1975;51(4Suppl):5-40. DOI: 10.1161/01.cir.51.4.5.
- Boogers MJ, Broersen A, van Velzen JE, et al. Automated quantification of coronary plaque with computed tomography: comparison with intravascular ultrasound using a dedicated registration algorithm for fusion-based quantification. *Eur Heart J.* 2012;33:1007-16.
- Min JK, Shaw LJ, Devereux RB, et al. Prognostic value of multidetector coronary computed tomographic angiography for prediction of all-cause mortality. *J Am Coll Cardiol.* 2007;1161-1170.
- Okayama S, Soeda T, Takami Y, et al. The influence of effective energy on computed tomography number depends on tissue characteristics in monoenergetic cardiac imaging. *Radiol. Res. Pract.* 2012;2012:150980. DOI: 10.1155/2012/150980
- Maddox TM, Stanislowski MA, Grunwald GK, et al. Nonobstructive coronary artery disease and risk of myocardial infarction. *JAMA* 2014;312:1754-1763. DOI: 10.1001/jama.2014.14681.
- Ma R, Ties D, van Assen M, et al. Towards reference values of pericoronary adipose tissue attenuation: impact of coronary artery and tube voltage in coronary computed tomography angiography. *Eur Radiol.* 2020;30(12):6838-6846. DOI: 10.1007/s00330-020-07069-0
- Goeller M, Achenbach S, Herrmann N, et al. Pericoronary adipose tissue CT attenuation and its association with serum levels of atherosclerosis-relevant inflammatory mediators, coronary calcification and major adverse cardiac events. *J Cardiovasc Comput Tomogr.* 2021;15(5):449-454. DOI: 10.1016/j.jcct.2021.03.005.
- Alluri K, McEvoy JW, Dardari ZA, et al. Distribution and burden of newly detected coronary artery calcium: Results from the Multi-Ethnic Study of Atherosclerosis. *J Cardiovasc Comput Tomogr* 2015;9:4:337-344. DOI: 10.1016/j.jcct.2015.03.015.
- Montenegro MR, Eggen DA. Topography of atherosclerosis in the coronary arteries. *Lab Invest* 1968;18:586-593.
- Giannoglou GD, Antoniadis AP, Chatzizisis YS, et al. Difference in the topography of atherosclerosis in the left versus right coronary artery in patients referred for coronary angiography. *BMC Cardiovasc Disord* 2010;10:26.

19. Schmermund A, Baumgart D, Möhlenkamp S, et al. Natural history and topographic pattern of progression of coronary calcification in symptomatic patients: an electron-beam CT study. *Arterioscler Thromb Vasc Biol* 2001;21:421-426.
20. Iwasaki K, Matsumoto T, Aono H, et al. Distribution of coronary atherosclerosis in patients with coronary artery disease. *Heart Vessels* 2010;25:14-18.
21. Lee S, Choi EK, Chang HJ, et al. Subclinical coronary artery disease as detected by coronary computed tomography angiography in an asymptomatic population. *Korean Circ J* 2010;40:434-441.
22. Enrico B, Suranyi P, Thilo C, et al. Coronary artery plaque formation at coronary CT angiography: morphological analysis and relationship to hemodynamics. *Eur Radiol* 2009;19:837-844.
23. Gaibazzi N, Martini C, Botti A, et al. Coronary inflammation by computed tomography pericoronary fat attenuation in MINOCA and Tako-Tsubo syndrome. *Journal of the American Heart Association* 2019;8.
24. Lin A, Kolossváry M, Yuvaraj J, et al. Myocardial infarction associates with a distinct pericoronary adipose tissue radiomic phenotype: a prospective case-control study. *JACC: Cardiovascular Imaging* 2020;13(11):2371-2383.
25. Kwiecinski J, Dey D, Cadet S, et al. Peri-Coronary Adipose Tissue Density Is Associated With 18 F-Sodium Fluoride Coronary Uptake in Stable Patients With High-Risk Plaques. *JACC Cardiovasc Imaging*. 2019;10:2000-2010. DOI: 10.1016/j.jcmg.2018.11.032.
26. Yuvaraj J, Lin A, Nerlekar N, et al. Pericoronary adipose tissue attenuation is associated with high-risk plaque and subsequent acute coronary syndrome in patients with stable coronary artery disease. *Cells*. 2021;10:5:1143. DOI: 10.3390/cells10051143.
27. Maurovich-Horvat P, Kallianos K, Engel LC, et al. Influence of pericoronary adipose tissue on local coronary atherosclerosis as assessed by a novel MDCT volumetric method. *Atherosclerosis*. 2011;219(1):151-157
28. Tzolos E, Williams MC, McElhinney P, et al. Pericoronary Adipose Tissue Attenuation, Low-Attenuation Plaque Burden, and 5-Year Risk of Myocardial Infarction. *JACC Cardiovasc Imaging*. 2022; 15(6):1078-1088. DOI: 10.1016/j.jcmg.2022.02.004.
29. Schulman-Marcus J, ó Hartaigh B, Gransar H, et al. Sex-specific associations between coronary artery plaque extent and risk of major adverse cardiovascular events: the CONFIRM long-term registry. *JACC Cardiovasc Imaging*. 2016;9:364-372. DOI: 10.1016/j.jcmg.2016.02.010.
30. Pundziute G, Schuijf JD, van Velzen JE, et al. Assessment with multi-slice computed tomography and gray-scale and virtual histology intravascular ultrasound of gender-specific differences in extent and composition of coronary atherosclerotic plaques in relation to age. *Am J Cardiol*. 2010;105:480-486. DOI: 10.1016/j.amjcard.2009.09.054.
31. Arnold AP, Cassis LA, Eghbali M, et al. Sex hormones and sex chromosomes cause sex differences in the development of cardiovascular diseases. *Arterioscler Thromb Vasc Biol*. 2017;37:746-756. DOI: 10.1161/ATVBAHA.116.307301.
32. van Diemen P, Bom MJ, Driessen RS, et al. Prognostic Value of RCA Pericoronary Adipose Tissue CT-Attenuation Beyond High-Risk Plaques, Plaque Volume, and Ischemia. *JACC Cardiovascular imaging* 2021:1598-1610. DOI: 10.1016/j.jcmg.2021.02.026.
33. Cho NJ, Nam BD, Park S, et al. Pericoronary fat attenuation index in computed tomography angiography is associated with mortality in end-stage renal disease. *Kidney Res Clin Pract* 2022;41:1:66-76. DOI: 10.23876/j.krcp.21.090.

Appendix

Figure 1. Correlation of the mean pericoronary adipose tissue (PCAT) attenuation among the three epicardial coronary arteries.

