



Universiteit
Leiden
The Netherlands

Bridging the gap between clinical trials and real-world for advanced melanoma: Results of the Dutch Melanoma Treatment Registry

Zeijl, M.C.T. van

Citation

Zeijl, M. C. T. van. (2023, September 12). *Bridging the gap between clinical trials and real-world for advanced melanoma: Results of the Dutch Melanoma Treatment Registry*. Retrieved from <https://hdl.handle.net/1887/3640096>

Version: Publisher's Version

License: [Licence agreement concerning inclusion of doctoral thesis in the Institutional Repository of the University of Leiden](#)

Downloaded from: <https://hdl.handle.net/1887/3640096>

Note: To cite this publication please use the final published version (if applicable).

5

Real-world outcomes of first-line anti-PD-1 therapy for advanced melanoma

M.C.T. van Zeijl, J.B.A.G. Haanen, M.W.J.M. Wouters, L.C. de Wreede, A. Jochems, M.J.B. Aarts, F.W.P.J. van den Berkmortel, J.W.B de Groot, G.A.P. Hospers, E. Kapiteijn, D. Piersma, R.S. van Rijn, K.P.M. Suijkerbuijk, A.J. ten Tije, A.A.M. van der Veldt, G. Vreugdenhil, J.J.M. van der Hoeven, A.J.M van den Eertwegh

Abstract

Background Efficacy of anti-PD-1 therapy for advanced melanoma has been well established, but it is unknown to what extent patients in real-world benefit. We report real-world outcomes of first-line single agent anti-PD-1 therapy in the Netherlands.

Methods From the Dutch Melanoma Treatment Registry we analysed patients with advanced (non-uvéal) melanoma diagnosed in 2015-2016 treated with first-line anti-PD-1 therapy. Overall survival (OS) was estimated with the Kaplan Meier method. Competing risks analysis was used to estimate probabilities for second-line treatment, with death as competing risk. With a Cox model we estimated the association of factors with OS.

Results Median age of the 550 patients who received first-line anti-PD-1 therapy was 65 years and 502 (95%) patients had an ECOG PS of 0-1, 383 (70%) had normal LDH, 370 (67%) had stage IV-M1c disease and in 441 (81%) had no brain metastases. Median OS was 24 months (95% CI: 20-30). Patients who were represented in phase III trials the median OS was 31 months (95% CI: 23-not estimable). BRAF mutation was associated with superior OS. ECOG PS of ≥ 1 , symptomatic brain metastases and liver metastases were associated with inferior OS and, together with elevated LDH, with death before patients were able to reach second-line treatment. Patients with a complete response had a 2-year OS probability from first reported CR of 92% (95% CI: 86-99).

Conclusion(s) Anti-PD-1 therapy was used effectively in real-world setting in the Netherlands. ECOG PS ≥ 1 , symptomatic brain metastasis, liver metastasis or elevated LDH are important prognostic factors for survival. Patients who achieved a complete response had superior OS. The additional information this study provides could help to improve more effective use in real-world.

Introduction

From the discovery of the programmed death-1 (PD-1) protein by Ishida et al, it took > 20 years to reveal its role in cancer immunology and develop anti-PD-1 antibodies for advanced melanoma.¹ PD-1 receptors are expressed on the surface of T-cells and when PD-1 binds to its ligand programmed death-ligand 1 (PD-L1) on peripheral tissue, their negative regulatory effect on the immune response ensures self-tolerance.² Expression of PD-L1 by tumour cells or immune-infiltrating cells in melanoma metastases can induce immune-tolerance and may result in immune-escape of the tumour. Anti-PD-1 antibodies can block the inhibitory interaction between PD-1 on T-cells and its ligand PD-L1 expressed in the tumour microenvironment, thereby enhancing antitumor immunity.

In 2015, the anti-PD-1 antibodies nivolumab and pembrolizumab were approved for the treatment of advanced melanoma based on the phase III trials, CHECKMATE-066 and KEYNOTE-006. The anti-PD-1 antibodies nivolumab and pembrolizumab showed superiority over chemotherapy and ipilimumab, respectively.^{3,4} Anti-PD-1 antibodies achieved objective response rates of 33% to 40%, with a 1-year overall survival (OS) probability of 73% to 75%, and only 10% to 12% of patients had treatment-related grade 3-4 adverse events (AEs). Median OS ranging from 20.3 to 37.5 months have been reported in the extended follow-up studies of these trials.⁵⁻⁸

The efficacy of anti-PD-1 antibodies has been well established on the basis of phase III trials, but by creating a homogenous study population, a large proportion of the general patient population was excluded from these trials.⁹ Outcomes of the real-world population (and setting) are needed to investigate which patients treated in daily practice benefit from anti-PD-1 therapy.

Melanoma care for advanced (unresectable stage III/ IV) melanomas was centralized in 2013 in the Netherlands. Since then, patients with advanced melanoma can only receive new systemic therapies in 14 designated melanoma centres. All these patients are registered in the Dutch Melanoma Treatment Registry (DMTR). Using this nationwide population-based registry, we report in-depth outcomes of first-line anti-PD-1 therapy in the real-world.

Materials and methods

Study design and patient population

For this longitudinal cohort study, data from the DMTR were used. In this comprehensive nationwide registry, all patients with advanced melanoma of any kind who are seen in a melanoma centre were followed from the diagnosis of advanced melanoma until death. A detailed description of the DMTR setup has been previously published by Jochems et al.¹⁰

We selected patients 18 years of age and older diagnosed with unresectable stage IIIC or IV melanoma treated with systemic therapy in 2015 and 2016 (the dataset cut-off date was June 1, 2019). Patients with uveal melanoma were excluded. First-line anti-PD-1 therapy was defined as single-agent therapy with nivolumab or pembrolizumab.

Statistical Analysis

Baseline characteristics of patients treated with first-line anti-PD-1 antibodies were compared to patients treated with another first-line systemic therapy. Categorical variables were analysed using the χ^2 test and numerical variables using the unpaired t test. Distribution of categories was based on non-missing data and a missing category was not reported for variables with <2.5% missing data. The median follow-up time was estimated with the reverse Kaplan-Meier method.¹¹ OS was defined as time from the start of first-line anti-PD-1 therapy to death from any cause. Patients alive or lost to follow-up were right-censored at the time of last registered contact. Progression-free survival (PFS) was defined as time from the start of first-line anti-PD-1 therapy to first registered progressive disease (PD) or death, whichever occurred first. Both OS and PFS were estimated using the Kaplan-Meier method. Probabilities for second-line treatment were estimated with cumulative incidence curves, in which second-line treatment and death before second-line treatment were considered competing risks. Time of second-line treatment was defined as the start date of second-line systemic therapy of any kind.¹²

A Cox proportional hazards model was used to assess the association of prognostic factors with OS. Prognostic factors assessed were age at diagnosis (≤ 50 , 50-59, 60-69, and ≥ 70), baseline Eastern Cooperative Oncology Group performance status (ECOG PS 0, 1, and ≥ 2), baseline lactate dehydrogenase level (LDH; normal and >1 upper limit of normal), stage at diagnosis (unresectable IIIC and IV-M1a-b and IV-M1c according to the 7th edition of the American Joint Committee on Cancer Melanoma Staging System),¹³ distant metastases (<3 organ sites and ≥ 3 organ sites involved), and BRAF mutational status. Brain metastasis (absent, asymptomatic, and symptomatic) and liver metastasis were analysed in a separate Cox model in which stage at diagnosis was not included because of its correlation with brain and liver metastasis. Cox proportional hazards models were also used to estimate the association between prognostic factors and the cause-specific hazards of second-line treatment.¹² Survival outcomes of patients who fulfilled the inclusion criteria of KEYNOTE-006 and CHECKMATE-066 trials (eligible) were compared with patients who did not fulfil these inclusion criteria (ineligible; inclusion criteria can be found in the supplementary material).^{3,4}

In all 14 melanoma centres, response status was based on a combination of RECIST v1.1 criteria and on (clinical) judgment by the medical team. We evaluated best overall response (BOR) and response status at 3, 6, 12, 18, and 24 months, using Sankey diagrams, to gain insight into the change of response status over time. BOR was defined as best response to first-

line anti-PD-1 therapy in the time period preceding a follow-up moment as assessed and reported by the medical team. Response status was defined as actual response status of first-line anti-PD-1 therapy around the prescheduled evaluation moment. If the prescheduled evaluation moment exceeded the follow-up duration, the last response status was carried forward. Death was always reported, even if it occurred in a subsequent treatment line. With 2 landmark models, OS stratified by response status was estimated from 3 and 6 months.

Data handling and statistical analyses were carried out using R (version 3.6.1.; packages car, lubridate, tidyverse, survival, and cmprsk).

Results

From 2015 to 2016, a total of 1442 patients with advanced melanoma were registered in the DMTR. After exclusion of uveal melanoma, 1394 patients remained. A total of 550 patients received first-line anti-PD-1 therapy and 844 patients received another first-line systemic therapy. Baseline patient characteristics, apart from sex, were different across patients receiving first-line anti-PD-1 therapy and another first-line systemic therapy (Table 1). Patients who received first-line anti-PD-1 antibody were older, with a median age of 65 years, but had favourable ECOG PS and lower tumour burden. LDH was elevated in 161 (30%) patients, of whom 25 (5% of all patients) had LDH >2x upper limit of normal, 370 (67%) patients had stage IV-M1c disease, 105 (19%) patients had brain metastasis, and 121 (22%) patients had liver metastasis. Of the patients who received first-line anti-PD-1 therapy, 40% (217/550) had a BRAF-mutated melanoma compared with 73% (615/844) of patients who received another first-line systemic therapy.

At dataset cut-off date, the median follow-up was 32 months and in 533 of 550 (97%) patients, anti-PD-1 therapy had been discontinued. The most common reasons for discontinuation were PD, planned discontinuation, AEs, and poor condition of the patient (50%, 24%, 12%, and 4.9%, respectively). A total of 202 of 533 (38%) patients had received second-line systemic therapy after first-line anti-PD-1 antibody. The most

Table 1 Baseline characteristics of all patients treated with first-line anti-PD-1 therapy. Baseline characteristics were compared with patients receiving treatment with another first-line systemic therapy. Missing data of less than 2.5% are not shown. Values are n (%) unless otherwise indicated.

	Anti-PD-1	Other*	Total	P-value [^]
Patients; n	550	844	1394	
Median age, year (range)	65 (21, 94)	61 (19, 96)	63 (19, 96)	<0.001
Age categories				<0.001
<50jr	75 (13,6)	177 (21,0)	252 (18,1)	
50-59jr	111 (20,2)	208 (24,6)	319 (22,9)	
60-69jr	164 (29,8)	233 (27,6)	397 (28,5)	
≥70jr	200 (36,4)	226 (26,8)	426 (30,6)	
Female	212 (38,5)	342 (40,5)	554 (39,7)	0.496
ECOG PS				<0.001
0	335 (63,7)	427 (52,8)	762 (57,1)	
1	167 (31,7)	265 (32,8)	432 (32,4)	
2	23 (4,4)	77 (9,5)	100 (7,5)	
≥3	1 (0,2)	40 (4,9)	41 (3,1)	
Unknown	24	35	59	
LDH level				<0.001
Normal	383 (70,4)	470 (56,2)	853 (61,8)	
1x ULN	136 (25,0)	225 (26,9)	361 (26,2)	
>2x ULN	25 (4,6)	141 (16,9)	166 (12,0)	
Stage				<0.001
Unresectable IIIC	42 (7,7)	57 (6,8)	99 (7,1)	
IV-M1a	61 (11,1)	60 (7,1)	121 (8,7)	
IV-M1b	76 (13,8)	68 (8,1)	144 (10,4)	
IV-M1c	370 (67,4)	657 (78,0)	1027 (73,8)	
Metastases in ≥3 organ sites	198 (36,0)	409 (48,5)	607 (43,6)	<0.001
Brain metastasis				<0.001
Absent	441 (80,8)	586 (70,5)	1027 (74,6)	
Asymptomatic	42 (7,7)	80 (9,6)	122 (8,9)	
Symptomatic	63 (11,5)	165 (19,9)	228 (16,6)	
Liver metastasis	121 (22,1)	263 (31,7)	384 (27,9)	<0.001
BRAF-mutant	217 (39,5)	615 (72,9)	832 (59,7)	<0.001

*Patients treated with another first-line systemic therapy, [^]P-value of statistical tests comparing characteristics of patients diagnosed 2013, 2014, 2015 and 2016 (excluding missing values). ECOG PS - Eastern Cooperative Oncology Group performance status, LDH - lactate dehydrogenase, ULN - upper limit of normal.

common second-line systemic therapies included BRAF and/or MEK inhibitors (103/202 (51%)) and ipilimumab (60/202 (30%)).

A total of 116 treatment-related grade 3-4 AEs occurred in 82 (15%) patients treated with a first-line anti-PD-1 antibody. The most common grade 3-4 AEs of anti-PD-1 therapy were colitis (2.9%), endocrinal AEs (2.8%), hepatitis (2.5%), and kidney function disorder (1.4%) (Table 2). Hospital admission was necessary in 39 (7.1%) patients and in 44 (8.0%) patients, grade 3-4 AE led to long-term medication use. Two patients died of neurotoxicity and 2 died of myocarditis

(Table 2). Nineteen (3.5%) patients had grade 3-4 AEs specified as “other,” which are summarized in the supplement Table S1.

Table 2 Treatment-related grade 3-4 adverse events of patients treated with first-line anti-PD-1 therapy. A total number of 116 treatment-related grade 3-4 adverse events occurred in 82 patients.

Grade 3 or 4 adverse events	n (%)	Consequences of adverse events	n (%)
Patients with grade 3-4 AEs	82 (14.9)	Short-term medication use	35 (6.4)
Anti-PD-1 discontinued due to AEs	62 (11.3)	Long-term medication use	44 (8.0)
Patients with ≥1 grade 3 or 4 AEs	24 (4.4)	Daycare without hospital admission	2 (0.4)
Leukopenia	2 (0.4)	Hospital admission	39 (7.1)
Neuropathy	5 (0.9)	ICU admission	5 (0.9)
Colitis	16 (2.9)	Surgery	1 (0.2)
Kidney function disorder	8 (1.4)	Permanent damage	4 (0.7)
Dyspnoea	4 (0.7)	Death	4 (0.7)
Pneumonitis	5 (0.9)	<i>Myocarditis</i>	2 (0.4)
Adrenal insufficiency	3 (0.5)	<i>Neurotoxicity</i>	2 (0.4)
Hypophysitis	2 (0.4)		
Thyroid insufficiency	5 (0.9)		
Fatigue	8 (1.5)		
Skin toxicity	17 (3.1)		
Hepatitis/liver toxicity	14 (2.5)		
Diabetes mellitus type 1	5 (0.9)		
Myocarditis	3 (0.5)		
Other [^]	19 (3.5)		

[^]Other grade 3-4 toxicities are listed in the supplement, AEs - adverse events, ICU - intensive care unit.

At the dataset cut-off date, a total of 301 (55%) deaths were observed. The median OS was 24 months (95% confidence interval (CI): 21-30 mo), with 12-month and 24-month survival probabilities of, respectively, 67% (95% CI: 64-71%) and 49% (95% CI: 45-54%; [Figure 1A](#)). The median PFS was 9.3 months (95% CI: 7.5-13.8; [Figure 1B](#)) and the treatment duration of anti-PD-1 therapy was 181 days (interquartile range: 68 to 377 days).

ECOG PS of 1 and ≥2, stage IV-M1c, liver metastases, and symptomatic brain metastases were negatively associated with survival. Hazard ratios (HRs) for death of ECOG PS of 1 and ≥ 2, with ECOG PS 0 as the reference category, were, respectively, 1.37 (95% CI: 1.06-1.77) and 2.20 (95% CI: 1.33-3.63; [Table 3](#)). Symptomatic brain metastases and liver metastases had HRs of, respectively, 1.77 (95% CI: 1.17-2.68) and 1.47 (95% CI: 1.05-2.06) compared to reference category no brain and no liver metastases. BRAF-mutated melanoma was associated with a superior survival compared with BRAF wild-type melanoma (HR: 0.60; 95% CI: 0.44-0.81; [Table 3](#)). In the univariable Cox model, elevated LDH was associated with inferior survival, and age of 70 years or older showed a trend

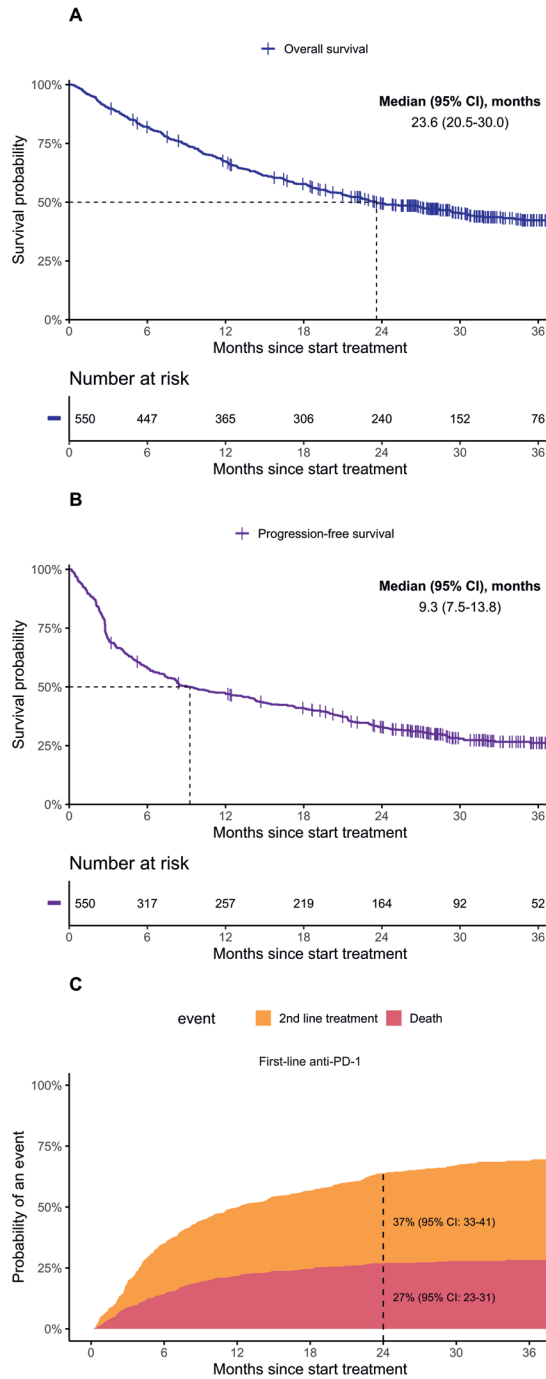


Figure 1 Outcomes of patients treated with first-line anti-PD-1 therapy. (A) Overall survival and (B) progression-free survival from first-line anti-PD-1 therapy, estimated with the Kaplan-Meier method. (C) Cumulative incidences of second-line treatment and death before second-line treatment, both estimated with competing risks analysis (probabilities are stacked). CI - confidence interval.

toward inferior survival, but these differences disappeared in the multivariable Cox regression analysis. The probability of still being in first-line anti-PD-1 therapy at 12 and 24 months was 50% (95% CI: 43-58%) and 36% (95% CI: 28-44%), respectively (Figure 1C). The cumulative incidence of second-line treatment at 12 and 24 months was 28% (95% CI: 24-32%) and 37% (95% CI: 33-41%) and the cumulative incidence of death before second-line treatment was 22% (95% CI: 18-25%) and 27% (95% CI: 23-31%), respectively (Figure 1C). The Cox model for the cause-specific hazard of death showed that elevated LDH, liver, and symptomatic brain metastasis and ECOG PS of ≥ 1 were all significantly associated with death within first-line anti-PD-1 therapy. Patients with BRAF-mutated melanoma were less at risk of dying during the first-line anti-PD-1 therapy and more likely to reach second-line treatment (supplement Table S2).

Two years after the start of first-line anti-PD-1 therapy, 105 (19%) patients had achieved a complete response (CR), 166 (30%) had achieved a partial response (PR), and 103 (19%) patients had stable disease (SD) as the BOR (Figure 2A). In 172 (31%) patients, the BOR was PD or death. However, as an “actual” response status at the evaluation moment of 24 months, 87 (16%) patients had a CR, 80 (16%) had a PR, and 16 (2.9%) had SD. A total of 366 (67%) patients had progression or were dead after 2 years (Figure 2B). In the supplement, various Sankey diagrams show how the stage of patients with PR, SD, and PD at 3 and 6 months develops over time (supplement Figure S1). For example, of the 154 patients who had a SD at 3 months, 22 (14%) achieved a CR, 22 (14%) achieved a PR, and 97 (63%) patients had PD or had died at the 2-year evaluation timepoint (supplement Figure S1a). Moreover, of the 170 patients with a PR at 3 months, 55 (32%) achieved a CR, 52 (31%) achieved a PR, and 63 (37%) patients had PD or had died at the 2-year evaluation timepoint (supplement Figure S1b).

The proportion of patients with a CR gradually increased over time (Figure 2). Patients with a CR at 24 months mostly had ECOG PS of 0 (72%) and a lower disease burden at baseline reflected in the normal LDH level in 83%, distant metastases in <3 organ sites in 79%, and absence of brain and liver metastases in 90% and 92%, respectively (supplement Table S3). At the dataset cut-off, a total of 113 (21%) patients had reached a CR as the BOR. Estimated from the first reported CR, the 2-year survival probability for this subgroup was 92% (95% CI: 86-99%) and the median OS was not reached (supplement Figure S2).

Table 3a Uni- and multivariable Cox regression models for overall survival of patients treated with first-line anti-PD-1 therapy (brain- and liver metastasis were excluded from this model).

	Univariable				Multivariable			
	<i>n</i>	HR	95% CI	<i>P</i> -value	<i>n</i>	HR	95% CI	<i>P</i> -value
Age								
≤50	75	0.88	(0.60-1.29)	0.505	72	0.86	(0.58-1.28)	0.45
50-59	111	0.81	(0.57-1.15)	0.237	106	0.90	(0.63-1.30)	0.59
60-69	164	1			152	1		
≥70	200	1.31	(0.99-1.72)	0.056	190	1.19	(0.89-1.59)	0.23
Gender								
Male	338	1			318	1		
Female	212	1.09	(0.87-1.38)	0.45	202	1.16	(0.91-1.48)	0.22
ECOG PS								
0	335	1			331	1		
1	167	1.55	(1.21-1.99)	<0.001	166	1.37	(1.06-1.77)	0.015
≥2	24	2.32	(1.42-3.77)	0.001	23	2.20	(1.33-3.63)	0.002
LDH level								
Normal	383	1			370	1		
>1x ULN	161	1.54	(1.21-1.96)	<0.001	150	1.23	(0.94-1.61)	0.14
Stage								
IIIC [^] , IV-M1a-b	179	1			167	1		
IV-M1c	370	1.48	(1.15-1.91)	0.002	353	1.38	(1.01-1.90)	0.045
Distant metastases								
<3 organ sites	352	1			333	1		
≥3 organ sites	198	1.23	(0.97-1.55)	0.081	187	1.03	(0.79-1.35)	0.82
BRAF-mutant								
No	333	1			309	1		
Yes	217	0.58	(0.46-0.74)	<0.001	211	0.61	(0.47-0.79)	<0.001

[^]Unresectable stage IIIC. ECOG PS - ECOG performance score, LDH - lactate dehydrogenase, ULN - upper limit of normal, HR - hazard ratio, CI - confidence interval.

Table 3b Separate multivariable Cox model for brain- and liver metastasis adjusted for age, gender, ECOG performance score, lactate dehydrogenase, distant metastases and BRAF mutation (stage was excluded).

	Univariable				Multivariable			
	<i>n</i>	HR	95% CI	<i>P</i> -value	<i>n</i>	HR	95% CI	<i>P</i> -value
Brain metastasis								
Absent	441	1			418	1		
Asymptomatic	42	1.07	(0.7-1.63)	0.749	38	1.15	(0.73-1.81)	0.539
Symptomatic	63	1.70	(1.22-2.35)	0.001	58	1.91	(1.34-2.72)	<0.001
Liver metastasis								
No	426	1			397	1		
Yes	121	1.70	(1.32-2.18)	<0.001	117	1.61	(1.19-2.17)	0.002

HR - hazard ratio, CI - confidence interval.

The 3-month landmark survival analysis showed that patients with PD had a 24-month survival probability from landmark of 15% (95% CI: 10-22%) and a median survival of 9.1 months (95% CI: 7.1-10.9mo; Figure 3A). The 24-month survival probability from landmark for patients who had SD or PR was, respectively, 57% (95% CI: 49-65%) and 80% (95% CI: 74-86%). All 5 patients with CR at 3 months were alive at the dataset cut-off timepoint. From the start of anti-PD-1 therapy, the 3-month survival probability of the whole cohort was 90% (95% CI: 88-93%).

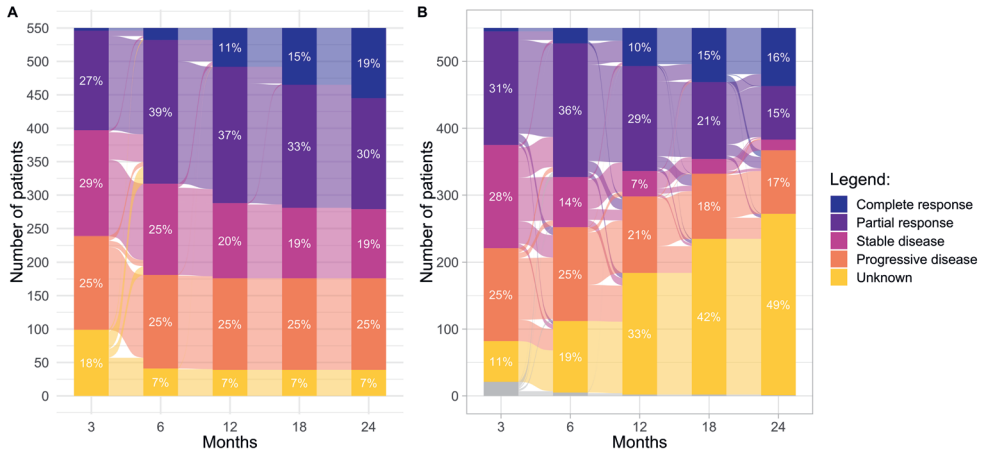


Figure 2 Sankey diagram of changes in response status of patients treated with first-line anti-PD-1 therapy between 0 and 24 months. (A) Best overall response and (B) response status.

In the 6-month landmark survival analysis, 138 (25%) patients had PD, 74 (13%) had SD, 199 (36%) had PR, and 23 (4.1%) patients had CR. From the start of anti-PD-1 therapy, the 6-month survival probability was 82% (95% CI: 79-85%). Patients with PD had a 24-month survival probability from landmark of 16% (95% CI: 11-24%) and a median survival of 8.3 months (95% CI: 6.9-10.5mo; Figure 3B). The 24-month survival probability from the 6-month landmark of patients with SD or PR was 60% (95% CI: 49-73%) and 79% (95% CI: 73-85%), respectively. For CR, the 24-month survival probability was 96% (95% CI: 89-100%).

In total, 158 (29%) patients did not fulfil 1 or more of the inclusion criteria of the immunotherapy phase III trials. The median OS of these “ineligible” patients was 17.1 months (95% CI: 13.6-23.7mo) and their 24-month survival probability was 41% (95% CI: 34-50%). Patients who fulfilled these inclusion criteria, and who would normally have been “eligible” for trial participation, showed a median OS of 31.1 months (95% CI: 23.4-not estimable) and their 24-month survival probability was 54% (95% CI: 49-60%; supplement Figure S3).

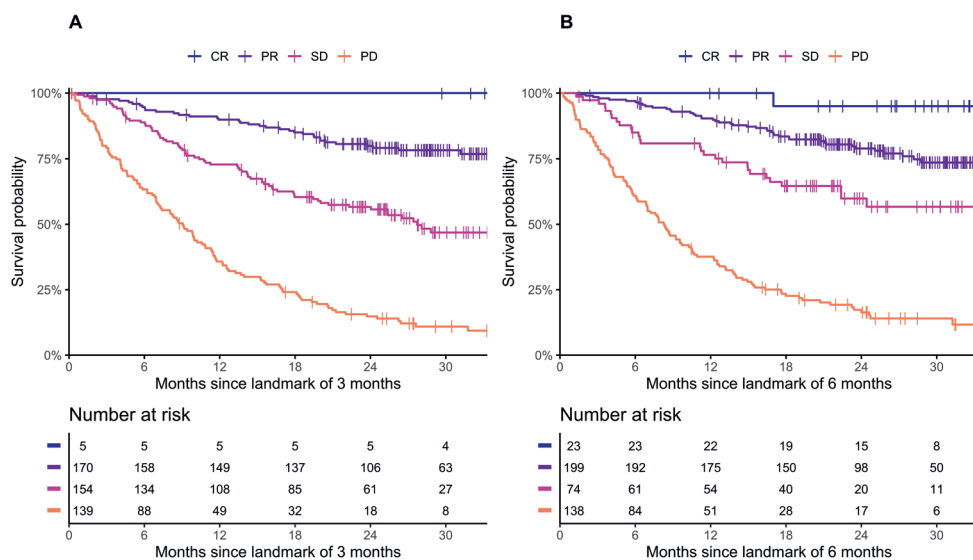


Figure 3 Landmark analysis of survival stratified by response status at two timepoints after start of first-line anti-PD-1 therapy. (A) Landmark analysis from 3 months. From start anti-PD-1 therapy the 3-month OS probability was 90% (95% CI: 88-93). (B) Landmark analysis from 6 months. From start anti-PD-1 therapy the 6-month OS probability was 82% (95% CI: 79-85). OS - overall survival, CI - Confidence interval, CR - complete response, PR - partial response, SD - stable disease, PD - progressive disease.

Patients with BRAF wild-type melanoma treated with anti-PD-1 therapy were younger and a higher proportion had normal LDH levels (supplement Table S4). The median OS of patients with BRAF wild-type melanoma who were treated with anti-PD-1 therapy was 18.2 months (95% CI: 13.9-22.8) versus 42.2 months (95% CI: 27.5-NE) for patients with BRAF-mutated melanoma (supplement Figure S4). For BRAF wild-type melanoma, the 24-month probability for death before second-line treatment was higher compared with BRAF-mutated melanoma (40% (95% CI: 35-45%) vs. 6.5% (95% CI: 3.2-9.9%), respectively; supplement Figure S5), whereas the 24-month probability for second-line treatment was lower (26% (95% CI: 21-31%) vs. 54% (95% CI: 48-61%), respectively). Of the 217 patients with BRAF-mutated melanoma, 123 (57%) received second-line treatment. The predominant second-line treatments for patients with BRAF-mutated melanoma were combination therapy with BRAF plus MEK inhibitor (69%) and monotherapy with a BRAF inhibitor (15%). Of the 333 patients with BRAF wild-type melanoma, 77 (24%) received second-line treatment that mainly consisted of ipilimumab monotherapy (64%). The characteristics and survival outcomes of anti-PD-1 therapy in BRAF wild-type and BRAF-mutant patients can be found in the supplement Table S4 and Figures S4-S6).

Discussion

To our knowledge, this is the first report of outcomes of an unselected real-world population of patients with advanced melanoma treated with first-line anti-PD-1 antibodies. We observed a

median OS of 24 months and a median PFS of 9 months, both in line with findings in phase III trials on anti-PD-1 antibodies.^{7,8} Elevated LDH, ECOG PS of ≥ 1 , liver metastases, and symptomatic brain metastases were negatively associated with OS and these factors, plus elevated LDH values, were also associated with death before reaching second-line treatment. BRAF-mutated melanoma was associated with superior OS. The percentage of patients achieving a CR increased gradually over time and 2 years after start of anti-PD-1 therapy; 33% of patients had a CR or PR. Treatment-related grade 3-4 AEs occurred in 15% of first-line anti-PD-1 antibody-treated patients, which is in line with phase III trials.^{7,8} Four treatment-related deaths were observed, but no new safety signals were found. We argue that the introduction of anti-PD-1 therapy in the real-world setting in the Netherlands can be considered effective and safe.

The median OS of 31 months for patients who fulfilled the inclusion criteria of the anti-PD-1 antibody phase III trials is comparable to the median OS observed in these trials.^{7,8} Although it is reassuring that the results from phase III trials apply to patients in the real-world (setting) who resemble these trial patients, patients who did not fulfil these inclusion criteria had a worse prognosis. This underscores that results from phase III trials do not automatically apply to all patients in the real-world. We found that symptomatic brain metastases, liver metastases, and ECOG PS of ≥ 1 were associated with inferior OS. Nevertheless, the prognosis of “ineligible” patients appears to have improved when comparing the median OS of 17 months with the median OS of 6.2 months estimated in a study with historical data of trial patients with advanced melanoma in the pre immune and targeted therapy era (from 1977 through 2005).¹⁴

One of our findings was that BRAF-mutated melanoma was statistically significantly associated with superior OS, but we argue that this is not evidence that anti-PD-1 therapy is more effective in BRAF-mutated melanoma. The consequence of analysing OS is that the impact of the entire treatment strategy that started with first-line anti-PD-1 therapy is investigated. In the CHECKMATE-067 trial, patients with BRAF-mutated melanoma treated with ipilimumab plus nivolumab or nivolumab monotherapy had a small OS advantage compared with BRAF wild-type melanoma, but a considerable proportion of these patients subsequently received targeted therapy.¹⁵ Also, in the KEYNOTE-006 trial, BRAF mutational status did not affect the benefit of pembrolizumab.⁴ If anti-PD-1 therapy is as effective in BRAF-mutated as in BRAF wild-type melanoma, our results suggest that for BRAF-mutated melanoma, sequential treatment with targeted therapy is an effective treatment strategy. There is some evidence that previous immunotherapy does not reduce the effectiveness of targeted therapy.¹⁶⁻¹⁸ In the KEYNOTE-006 trial, 119 of 195 (61%) patients with BRAF-mutated melanoma were able to receive targeted therapy after pembrolizumab, but unfortunately, analysis of this subgroup could not be carried out.⁷ In our cohort, 57% of the patients with BRAF-mutated melanoma were able to receive second-line therapy, of whom 69% were treated with BRAF plus MEK inhibitors and

15% with monotherapy with a BRAF inhibitor. However, only 25% of the patients with a BRAF wild-type melanoma received second-line therapy (supplement Figure S4–S6).

To specifically investigate the effectiveness of first-line anti-PD-1 therapy only, we estimated time to the subsequent systemic treatment. Examining second-line treatment poses the problem that some patients die before being able to reach second-line treatment. If the event of death is then censored, the underlying assumption is made that patients who have died may still be able to reach the event of interest. This impossible assumption would overestimate failure probability.¹² With the competing risks method, both the event of interest, second-line treatment, and its competing risk, death, could be investigated, allowing for a more specific analysis of the outcomes of first-line anti-PD-1 therapy.

Elevated LDH, ECOG PS of ≥ 1 , symptomatic brain metastases, and liver metastases were associated with death before reaching second-line treatment and, thus, failure to successfully treat patients with anti-PD-1 therapy. All of these prognostic factors are well established for advanced melanoma in general and for OS of patients treated with immunotherapy.^{19–23} Our results suggest that patients with ≥ 1 of these factors, especially with elevated LDH and symptomatic brain metastasis, gain less benefit from anti-PD-1 therapy. BRAF plus MEK-inhibitors dabrafenib plus trametinib could be a treatment strategy for these patients who have BRAF-mutated melanoma, as it showed antitumor activity in patients with brain metastasis, but durability of response was short.²⁴ Trials of ipilimumab plus nivolumab combination therapy showed promising results in a patient population with brain metastasis and elevated LDH.^{25,26} However, the patient's disease status and condition must be able to tolerate the delayed response that is typical of immunotherapy and the burden of ipilimumab plus nivolumab combination therapy.

BRAF-mutated melanoma was statistically significantly associated with second-line treatment and not with death before second-line treatment, but the relevance of this finding is questionable. After failure to reach a response with an anti-PD-1 antibody, a switch to targeted therapy can easily be made. This causes a selection of patients with a BRAF-mutated melanoma remaining in anti-PD-1 therapy who have favourable patient and/or disease characteristics and/or who respond to anti-PD-1 therapy. Because treatment is equally effective for BRAF-mutant and wild-type melanoma, there is no clinical consequence to this finding.^{3,4,7,8,27} The higher proportion of patients with BRAF-mutated melanoma who received second-line treatment and the superior OS compared with BRAF wild-type melanoma are evidence that these patients benefit from sequential treatment with targeted therapy.

The landmark analysis and the Sankey diagrams in the supplement showed that reaching CR or PR at 3 or 6 months was associated with favourable OS (2-y OS probabilities of 100% and 79%, respectively), but for SD this was less evident (57%). Having SD still entails a high risk of not

achieving disease control with anti-PD-1 therapy. Treatment should perhaps be directed at developing PR or CR in patients with a SD. A switch to other or combination immunotherapy or targeted therapy in patients who have SD after anti-PD-1 therapy could perhaps be considered sooner, but it is uncertain what the best treatment strategy is.

The proportion of patients who had a CR at 2 years was similar to CR rates of 13% to 19% reported in phase III trials (16% vs. 13% to 19%).^{7,8} Patient and disease characteristics of these trials were favourable compared with our study population, except that in the CHECKMATE-066 trial, more patients had elevated LDH. Our study indicates that anti-PD-1 therapy is more effective in achieving a CR in patients with favourable baseline patient and disease characteristics and that patients who achieved a CR have superior OS from the first reported CR (supplement Table S3 and Figure S2). This is consistent with the findings in previous studies.^{28,29}

There are limitations to our study, however. The effectiveness of anti-PD-1 therapy could not be compared head-to-head with other systemic therapies because of the observational nature of our study and the fact that there are no guidelines for new systemic therapies. Confounding by indication does not allow fair comparison as allocation of a treatment depends on a patient's suitability to receive a treatment as judged by the medical oncologist. That our cohort is highly selected is reflected in the favourable baseline characteristics of patients who received anti-PD-1 therapy compared with patients receiving another first-line systemic treatment (Table 1).

Data quality can be a limitation of observational studies and must always be considered. Since the start of the DMTR in 2013, data managers have been intensively trained and an online registration platform warns data managers for missing data and inconsistencies. All registered data are checked and approved by medical oncologists. Therefore, we argue that the data in the DMTR are of high quality.

One important limitation is that the response status in all melanoma centres was not strictly based on the anatomic tumour burden and its change using the RECIST v1.1 criteria but also on the clinical/symptomatic judgment by the medical team. Especially in patients with pseudo-progression or a sustained PR (on or off treatment) with minimal lesions that persisted on imaging, the response status evaluated with RECIST v1.1 criteria could have been overruled by the judgment of the medical team. We believe that this only had a limited influence on the reported response status and the clinical response reflects the effectiveness of anti-PD-1 therapy in daily practice.

We were unable to analyse whether all patients with advanced melanoma in the Netherlands were included in the DMTR. Since 2013, however, care for patients with advanced melanoma is centralised in 14 melanoma centres across the country. Structural regional (multidisciplinary) consultation between oncology specialists is well integrated in the Dutch hospital care.

Furthermore, a quality standard in the Netherlands stipulates that all patients with an advanced melanoma, if the patient agrees and the patient's condition permits, must be referred to a melanoma centre for evaluation and treatment. We estimate that only a small proportion of patients with an advanced melanoma had an infaust prognosis and were not referred to a melanoma centre and therefore not registered in the DMTR.

The proliferation of effective therapies for advanced melanoma has greatly improved the outcomes of patients with advanced melanoma. Allocating the most suitable systemic therapy and being able to explain what a patient's situation means for his or her prognosis are important and can be challenging for a medical oncologist. Detailed information on the effect size of risk factors on prognosis is a first step to better inform and treat (or not treat) patients. This study provides additional information to phase III trials to improve the use of anti-PD-1 therapy for patients with advanced (non-veal) melanoma. The use of a nationwide population-based registry ensures external validity making outcomes generalizable to the real-world patient population.

Conflict of interest

A.J.M.v.d.E. has advisory relationships with Amgen, Bristol-Myers Squibb, Roche, Novartis, MSD, and Pierre Fabre. J.W.B.d.G. has received personal fees outside the submitted work from Bristol-Myers Squibb, Roche, Pierre Fabre, Servier, MSD, and Novartis. G.A.P.H. has consultancy/advisory relationships with Amgen, Bristol-Myers Squibb, Roche, MSD, Pfizer, and Novartis, and has received research grants not related to this paper from Bristol-Myers Squibb, and Seerave. E.W.K. has consultancy/advisory relationships with Amgen, Bristol-Myers Squibb, Novartis, Roche, Merck, Pierre Fabre, Eisai, Bayer, and Genzyme-Sanofi and received research grants not related to this paper from Novartis and Bristol-Myers Squibb. K.P.M.S. has advisory relationships with Bristol-Myers Squibb, Roche, Novartis, MSD, and Pierre Fabre. A.A.M.v.d.V. has consultancy relationships with Bristol-Myers Squibb, MSD, Roche, Novartis, Pierre Fabre, Pfizer, Sanofi, Ipsen, and Eisai. J.B.A.G.H. has advisory relationships with Amgen, AstraZeneca, Bayer, Bristol-Myers Squibb, Celsius Therapeutics, GSK, Immunocore, Ipsen, MSD, Merck Serono, Novartis, Neon Therapeutics, Pfizer, Roche/Genentech, Sanofi, and Seattle Genetics, and has received research grants not related to this paper from Novartis, Bristol-Myers Squibb, MSD, and Neon Therapeutics. All grants were paid to the institutions. The remaining authors declare no conflicts of interest.

References

1. Ishida Y, Agata Y, Shibahara K, Honjo T. Induced expression of PD-1, a novel member of the immunoglobulin gene superfamily, upon programmed cell death. *EMBO J.* 1992 Nov;11(11):3887-95.
2. Keir ME, Liang SC, Guleria I, Latchman YE, Qipo A, Albacker LA, et al. Tissue expression of PD-L1 mediates peripheral T cell tolerance. *J Exp Med.* 2006 Apr 17;203(4):883-95.
3. Robert C, Long G V., Brady B, Dutriaux C, Maio M, Mortier L, et al. Nivolumab in previously untreated

- melanoma without BRAF mutation. *N Engl J Med*. 2015 Jan 22;372(4):320–30.
4. Robert C, Schachter J, Long G V., Arance A, Grob JJ, Mortier L, et al. Pembrolizumab versus ipilimumab in advanced melanoma. *N Engl J Med*. 2015 Jun 25;372(26):2521–32.
 5. Robert C, Ribas A, Hamid O, Daud A, Wolchok JD, Joshua AM, et al. Durable complete response after discontinuation of pembrolizumab in patients with metastatic melanoma. *J Clin Oncol*. 2018 Jun 10;36(17):1668–74.
 6. Hodi FS, Kluger H, Sznol M, Carvajal R, Lawrence D, Atkins M, et al. Abstract CT001: Durable, long-term survival in previously treated patients with advanced melanoma (MEL) who received nivolumab (NIVO) monotherapy in a phase I trial. In American Association for Cancer Research (AACR); 2016.
 7. Schachter J, Ribas A, Long G V., Arance A, Grob JJ, Mortier L, et al. Pembrolizumab versus ipilimumab for advanced melanoma: final overall survival results of a multicentre, randomised, open-label phase 3 study (KEYNOTE-006). *Lancet*. 2017 Oct 21;390(10105):1853–62.
 8. Ascierto PA, Long G V., Robert C, Brady B, Dutriaux C, Di Giacomo AM, et al. Survival Outcomes in Patients with Previously Untreated BRAF Wild-Type Advanced Melanoma Treated with Nivolumab Therapy: Three-Year Follow-up of a Randomized Phase 3 Trial. *JAMA Oncol*. 2019 Feb 1;5(2):187–94.
 9. Donia M, Kimper-Karl ML, Høyer KL, Bastholt L, Schmidt H, Svane IM. The majority of patients with metastatic melanoma are not represented in pivotal phase III immunotherapy trials. *Eur J Cancer*. 2017 Mar 1;74:89–95.
 10. Jochems A, Schouwenburg MG, Leeneman B, Franken MG, van den Eertwegh AJM, Haanen JBAG, et al. Dutch Melanoma Treatment Registry: Quality assurance in the care of patients with metastatic melanoma in the Netherlands. *Eur J Cancer*. 2017 Feb;72:156–65.
 11. Schemper M, Smith TL. A note on quantifying follow-up in studies of failure time. *Control Clin Trials*. 1996 Aug;17(4):343–6.
 12. Putter H, Fiocco M, Gekus RB. Tutorial in biostatistics: Competing risk and multi-state models. *Stat Med*. 2007 May 20;26(11):2389–430.
 13. Balch CM, Gershenwald JE, Soong SJ, et al. Final version of 2009 AJCC melanoma staging and classification. *J Clin Oncol*. 2009;27(36):6199–6206.
 14. Korn EL, Liu PY, Lee SJ, Chapman JAW, Niedzwiecki D, Suman VJ, et al. Meta-analysis of phase II cooperative group trials in metastatic stage IV melanoma to determine progression-free and overall survival benchmarks for future phase II trials. *J Clin Oncol*. 2008 Feb 1;26(4):527–34.
 15. Hodi FS, Chiarion-Sileni V, Gonzalez R, Grob JJ, Rutkowski P, Cowey CL, et al. Nivolumab plus ipilimumab or nivolumab alone versus ipilimumab alone in advanced melanoma (CheckMate 067): 4-year outcomes of a multicentre, randomised, phase 3 trial. *Lancet Oncol*. 2018 Nov 1;19(11):1480–92.
 16. Ackerman A, Klein O, McDermott DF, Wang W, Ibrahim N, Lawrence DP, et al. Outcomes of patients with metastatic melanoma treated with immunotherapy prior to or after BRAF inhibitors. *Cancer*. 2014 Jun 1;120(11):1695–701.
 17. Johnson DB, Pectasides E, Feld E, Ye F, Zhao S, Johnpulle R, et al. Sequencing Treatment in BRAFV600 Mutant Melanoma: Anti-PD-1 before and after BRAF Inhibition. *J Immunother*. 2017;40(1):31–5.
 18. Atkins MB, Larkin J. Immunotherapy Combined or Sequenced with Targeted Therapy in the Treatment of Solid Tumors: Current Perspectives. *J Natl Cancer Inst*. 2016 Jun 1;108(6).
 19. Manola J, Atkins M, Ibrahim J, Kirkwood J. Prognostic factors in metastatic melanoma: A pooled analysis of Eastern Cooperative Oncology Group trials. *J Clin Oncol*. 2000 Nov 15;18(22):3782–93.
 20. Gaudy-Marqueste C, Dussouil AS, Carron R, Troin L, Malissen N, Loundou A, et al. Survival of melanoma patients treated with targeted therapy and immunotherapy after systematic upfront control of brain metastases by radiosurgery. *Eur J Cancer*. 2017 Oct 1;84:44–54.
 21. Kelderman S, Heemskerck B, van Tinteren H, van den Brom RRH, Hospers GAP, van den Eertwegh AJM, et al. Lactate dehydrogenase as a selection criterion for ipilimumab treatment in metastatic melanoma. *Cancer Immunol Immunother*. 2014;63(5):449–58.

22. Joseph RW, Ellassaiss-Schaap J, Kefford R, Hwu WJ, Wolchok JD, Joshua AM, et al. Baseline tumor size is an independent prognostic factor for overall survival in patients with melanoma treated with pembrolizumab. *Clin Cancer Res*. 2018 Oct 15;24(20):4960–7.
23. Diem S, Kasenda B, Spain L, Martin-Liberal J, Marconcini R, Gore M, et al. Serum lactate dehydrogenase as an early marker for outcome in patients treated with anti-PD-1 therapy in metastatic melanoma. *Br J Cancer*. 2016 Feb 2;114(3):256–61.
24. Davies MA, Saiag P, Robert C, Grob JJ, Flaherty KT, Arance A, et al. Dabrafenib plus trametinib in patients with BRAFV600-mutant melanoma brain metastases (COMBI-MB): a multicentre, multicohort, open-label, phase 2 trial. *Lancet Oncol*. 2017 Jul 1;18(7):863–73.
25. Tawbi HA, Forsyth PA, Algazi A, Hamid O, Hodi FS, Moschos SJ, et al. Combined nivolumab and ipilimumab in melanoma metastatic to the brain. *N Engl J Med*. 2018 Aug 23;379(8):722–30.
26. Hodi FS, Chesney J, Pavlick AC, Robert C, Grossmann KF, McDermott DF, et al. Combined nivolumab and ipilimumab versus ipilimumab alone in patients with advanced melanoma: 2-year overall survival outcomes in a multicentre, randomised, controlled, phase 2 trial. *Lancet Oncol*. 2016 Nov 1;17(11):1558–68.
27. Ribas A, Hamid O, Daud A, Hodi FS, Wolchok JD, Kefford R, et al. Association of pembrolizumab with tumor response and survival among patients with advanced melanoma. *JAMA Oncol*. 2016 Apr 19;315(15):1600–9.
28. Betof Warner A, Palmer JS, Shoushtari AN, Goldman DA, Panageas KS, Hayes SA, et al. Long-Term Outcomes and Responses to Retreatment in Patients With Melanoma Treated With PD-1 Blockade. *J Clin Oncol*. 2020 Feb 13;JCO.19.01464.
29. Robert C, Ribas A, Schachter J, Arance A, Grob J-J, Mortier L, et al. Pembrolizumab versus ipilimumab in advanced melanoma (KEYNOTE-006): post-hoc 5-year results from an open-label, multicentre, randomised, controlled, phase 3 study. *Lancet Oncol* 2019 Sep 1;20(9):1239–51.

Supplementary material

Table S1 Grade 3-4 adverse events of category 'Other' from Table 2.

Other grade 3-4 adverse events	n (%)
Arthralgia/arthritis	4 (0.7)
Auto-immune	4 (0.7)
Myalgia	2 (0.4)
Myositis	1 (0.2)
Pancreatitis	2 (0.4)
Uveitis	2 (0.4)
Unspecified	3 (0.5)

Table S2 Cox regression analysis of cumulative incidence of second-line treatment or death before second-line treatment of patients treated with first-line anti-PD-1 therapy.

	2nd-line				Death			
	n	HR	95% CI	P-value	n	HR	95% CI	P-value
Age								
≤50	71	1.06	(0.69-1.63)	0.78	71	0.70	(0.34-1.43)	0.325
50-59	106	0.95	(0.64-1.40)	0.797	106	1.19	(0.68-2.07)	0.54
60-69	148	1			148	1		
≥70	188	0.84	(0.59-1.20)	0.343	188	1.29	(0.84-1.99)	0.242
ECOG PS								
0	327	1			327	1		
1	163	1.20	(0.88-1.65)	0.247	163	1.79	(1.24-2.58)	0.002
≥2	23	1.46	(0.70-3.04)	0.313	23	2.40	(1.25-4.59)	0.008
LDH level								
Normal	365	1			365	1		
>1x ULN	148	0.89	(0.63-1.24)	0.479	148	1.73	(1.21-2.48)	0.003
Distant metastases								
<3 organ sites	328	1			328	1		
≥3 organ sites	185	1.09	(0.79-1.50)	0.598	185	0.95	(0.63-1.42)	0.792
Brain metastasis								
Absent	417	1			417	1		
Asymptomatic	38	1.18	(0.72-1.93)	0.518	38	1.07	(0.53-2.16)	0.842
Symptomatic	58	1.08	(0.67-1.74)	0.739	58	2.31	(1.44-3.71)	<0.001
Liver metastasis								
No	396	1			396	1		
Yes	117	1.30	(0.90-1.88)	0.159	117	1.65	(1.08-2.50)	0.02
BRAF-mutant								
No	305	1			305	1		
Yes	208	1.87	(1.41-2.48)	<0.001	208	0.18	(0.10-0.31)	<0.001

ECOG PS - ECOG performance score, LDH - lactate dehydrogenase, ULN - upper limit of normal, HR - hazard ratio, CI - confidence interval.

Table S3 Patient characteristics at start of anti-PD-1 therapy stratified by response status evaluated at 24 months. Missing data of less than 2.5% are not shown. Values are *n* (%) unless otherwise indicated.

	Complete response	Partial response	Stable disease	Progressive disease	Death
Patients; <i>n</i>	87	80	16	95	271
Median age, year (range)	63 [24, 94]	66 [36, 86]	62 [31, 74]	61 [22, 80]	67 [21, 91]
Age categories					
<50jr	22 (25,3)	6 (7,5)	3 (18,8)	11 (11,6)	33 (12,2)
50-59jr	13 (14,9)	20 (25,0)	3 (18,8)	32 (33,7)	42 (15,5)
60-69jr	32 (36,8)	19 (23,8)	6 (37,5)	26 (27,4)	81 (29,9)
>70jr	20 (23,0)	35 (43,8)	4 (25,0)	26 (27,4)	115 (42,4)
Female	33 (37,9)	24 (30,0)	9 (56,2)	38 (40,0)	108 (39,9)
ECOG PS					
0	63 (77,8)	50 (64,1)	11 (73,3)	62 (66,0)	148 (57,6)
1	16 (19,8)	26 (33,3)	4 (26,7)	28 (29,8)	93 (36,2)
2	2 (2,5)	2 (2,6)	0 (0,0)	4 (4,3)	15 (5,8)
≥3	0 (0,0)	0 (0,0)	0 (0,0)	0 (0,0)	1 (0,4)
Unknown	6	2	1	1	14
LDH level					
Normal	71 (82,6)	49 (62,0)	12 (80,0)	75 (78,9)	175 (65,3)
1x ULN	15 (17,4)	24 (30,4)	3 (20,0)	19 (20,0)	75 (28,0)
>2X ULN	0 (0,0)	6 (7,6)	0 (0,0)	1 (1,1)	18 (6,7)
Stage					
Unresectable IIIC	9 (10,5)	5 (6,2)	1 (6,2)	5 (5,3)	22 (8,1)
IV-M1a	16 (18,6)	4 (5,0)	2 (12,5)	19 (20,0)	20 (7,4)
IV-M1b	14 (16,3)	15 (18,8)	4 (25,0)	11 (11,6)	32 (11,8)
IV-M1c	47 (54,7)	56 (70,0)	9 (56,2)	60 (63,2)	197 (72,7)
Metastases in ≥3 organ sites	18 (20,7)	29 (36,2)	3 (18,8)	44 (46,3)	103 (38,0)
Brain metastasis					
Absent	78 (89,7)	62 (77,5)	14 (87,5)	80 (84,2)	207 (77,5)
Asymptomatic	6 (6,9)	5 (6,2)	0 (0,0)	9 (9,5)	22 (8,2)
Symptomatic	3 (3,4)	13 (16,2)	2 (12,5)	6 (6,3)	38 (14,2)
Liver metastasis	7 (8,0)	19 (24,1)	2 (12,5)	15 (15,8)	77 (28,6)
BRAF-mutant	38 (43,7)	36 (45,0)	8 (50,0)	50 (52,6)	84 (31,0)

ECOG PS - Eastern Cooperative Oncology Group performance score, LDH - lactate dehydrogenase.

Table S4 Patient characteristics at start of anti-PD-1 therapy stratified by BRAF mutational status. Missing data of less than 2.5% are not shown. Values are n (%) unless otherwise indicated.

	BRAF wild-type	BRAF- mutant	
Patients; n	323	217	
Median age, year (range)	68 [21, 94]	62 [22, 85]	<0.001
Age categories			<0.001
<50jr	40 (12.4)	33 (15.2)	
50-59jr	142 (44.0)	55 (25.3)	
60-69jr	48 (14.9)	62 (28.6)	
>70jr	93 (28.8)	67 (30.9)	
Female	118 (36.5)	89 (41.0)	0.337
ECOG PS			0.120
0	183 (60.0)	147 (69.3)	
1	105 (34.4)	59 (27.8)	
2	16 (5.2)	6 (2.8)	
≥3	1 (0.3)	0 (0.0)	
Unknown	18	5	
LDH level			0.006
Normal	210 (66.0)	166 (76.9)	
1x ULN	87 (27.4)	46 (21.3)	
>2X ULN	21 (6.6)	4 (1.9)	
Stage			0.198
Unresectable IIIC			
IV-M1a	31 (9.6)	11 (5.1)	
IV-M1b	34 (10.6)	26 (12.0)	
IV-M1c	47 (14.6)	27 (12.4)	
Metastases in ≥3 organ sites	210 (65.2)	153 (70.5)	
Brain metastasis	113 (35.0)	84 (38.7)	0.429
Absent			0.298
Asymptomatic	265 (82.8)	168 (77.8)	
Symptomatic	20 (6.2)	20 (9.3)	
Liver metastasis	35 (10.9)	28 (13.0)	
BRAF-mutant	78 (24.2)	42 (19.4)	0.230

ECOG PS - Eastern Cooperative Oncology Group performance score, LDH - lactate dehydrogenase.

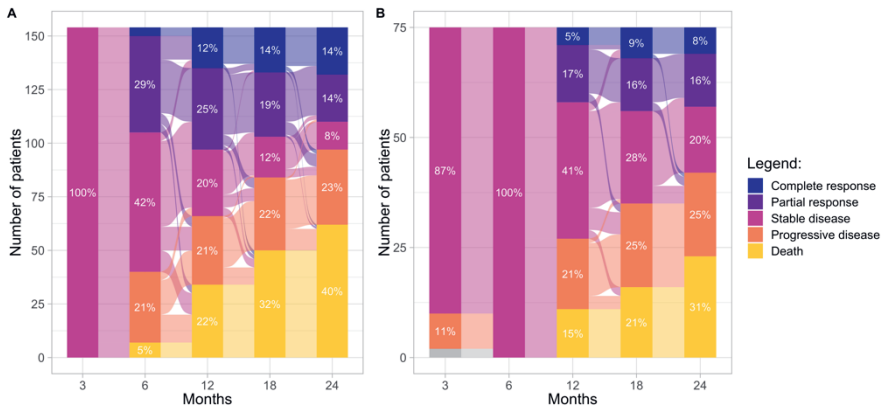


Figure S1a Sankey diagram of changes in response status of patients treated with first-line anti-PD-1 therapy from stable disease achieved at (A) 3 months and (B) 6 months.

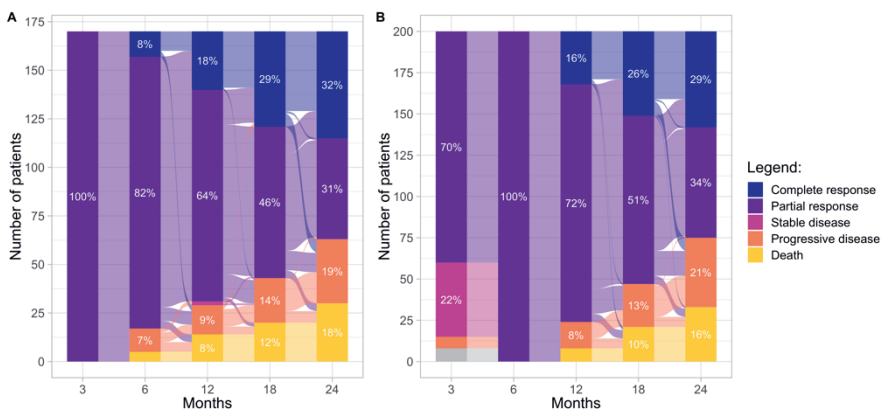


Figure S1b Sankey diagram of changes in response status of patients treated with first-line anti-PD-1 therapy from partial response achieved at (A) 3 months and (B) 6 months.

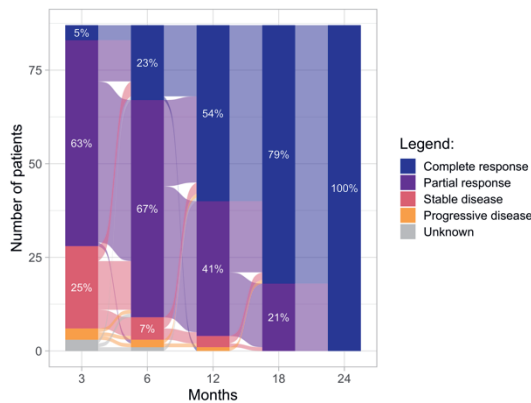


Figure S1c Sankey diagram of prior response status of patients treated with first-line anti-PD-1 therapy who had a complete response at 24 months.

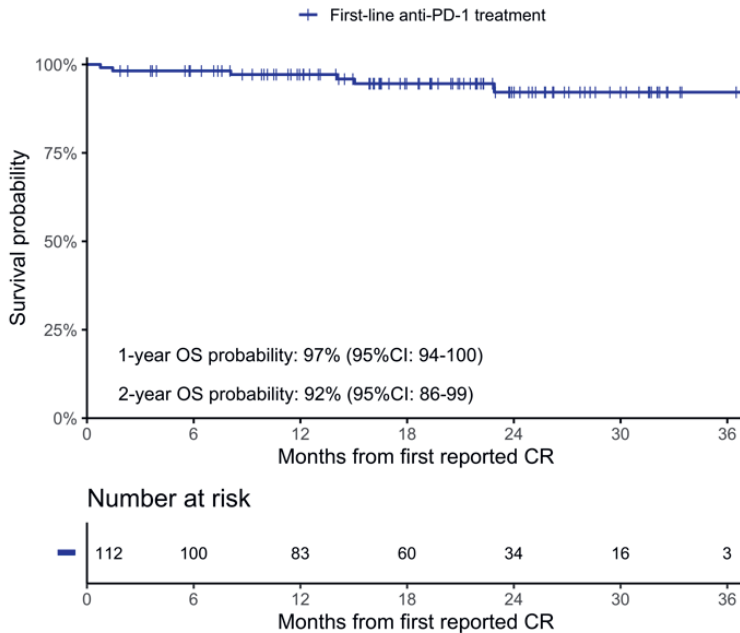


Figure S2 Overall survival of patients treated with first-line anti-PD-1 therapy with a complete response. OS estimated from date of first reported complete response. Median follow-up time was 21 months. OS - overall survival, CR - complete response.

Eligibility criteria Criteria to identify patients who would have been eligible for trial participation:

- No active brain metastasis or leptomeningeal metastasis
- Eastern Cooperative Oncology Group (ECOG) performance status (PS) 0 or 1
- No active autoimmune disease(s)
 - Rheumatoid disease, systemic lupus erythematosus, vasculitis, inflammable bowel disease (Crohn's or colitis ulcerosa)
- No immune-modulating medication
 - Azathioprine
 - Interferon
- No known history of Human Immunodeficiency Virus or AIDS
- No liver disease or failure or kidney failure
- No psychiatric disorder

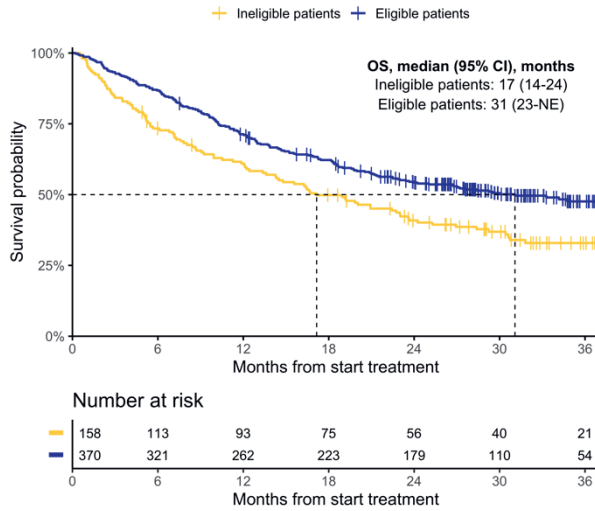


Figure S3 Overall survival of patients treated with first-line anti-PD-1 therapy who met and who did not meet phase III trial inclusion criteria. Eligibility for potential trial participation could not be determined for 22 patients due to missing values.

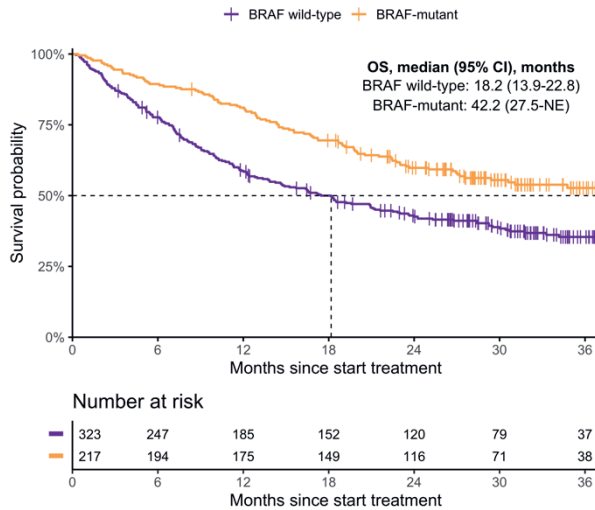


Figure S4 Overall survival of patients treated with first-line anti-PD-1 therapy stratified by BRAF mutational status. CI - confidence interval, NE - not estimable.

Cumulative incidence functions

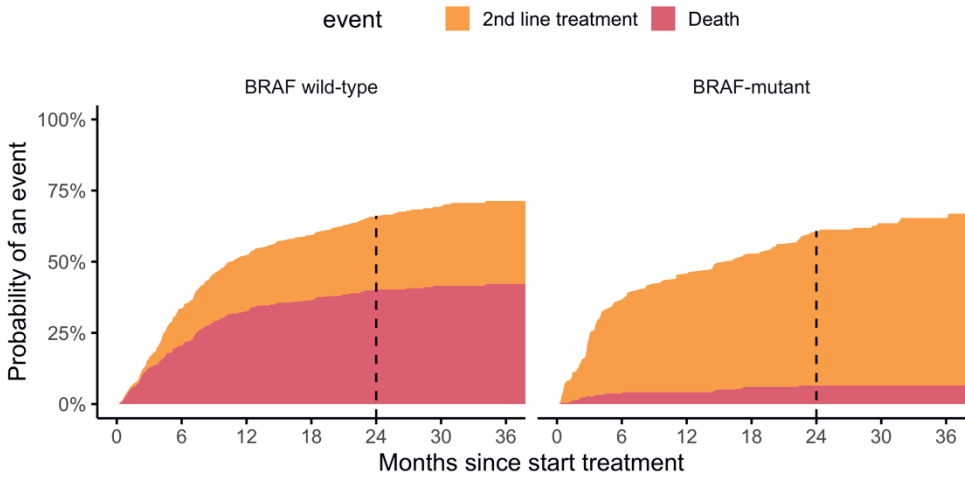


Figure S5 Cumulative incidence of second-line treatment or death patients treated with first-line anti-PD-1 therapy, estimated with competing risks analysis and stratified by BRAF mutational status.

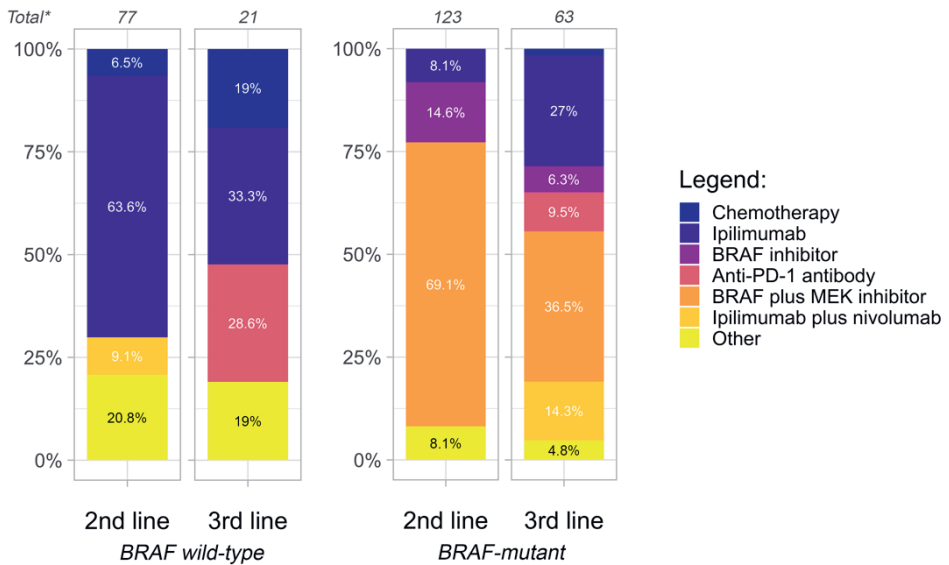


Figure S6 Systemic therapies after first-line anti-PD-1 therapy stratified by BRAF mutational status. *Total number of patients treated in the relevant line of systemic therapy.