



Universiteit
Leiden
The Netherlands

Incidence and mortality rates of intracranial hemorrhage in hemophilia: a systematic review and meta-analysis

Zwagemaker, A.F.; Gouw, S.C.; Jansen, J.S.; Vuong, C.; Coppens, M.; Hu, Q.; ... ; Fijnvandraat, K.

Citation

Zwagemaker, A. F., Gouw, S. C., Jansen, J. S., Vuong, C., Coppens, M., Hu, Q., ... Fijnvandraat, K. (2021). Incidence and mortality rates of intracranial hemorrhage in hemophilia: a systematic review and meta-analysis. *Blood*, 138(26), 2853-2873. doi:10.1182/blood.2021011849

Version: Publisher's Version

License: [Licensed under Article 25fa Copyright Act/Law \(Amendment Taverne\)](#)

Downloaded from: <https://hdl.handle.net/1887/3264155>

Note: To cite this publication please use the final published version (if applicable).

THROMBOSIS AND HEMOSTASIS

Incidence and mortality rates of intracranial hemorrhage in hemophilia: a systematic review and meta-analysis

Anne-Fleur Zwagemaker,¹ Samantha C. Gouw,¹ Julie S. Jansen,¹ Caroline Vuong,¹ Michiel Coppens,² Qun Hu,³ Xiaoqin Feng,⁴ Soon K. Kim,⁵ Johanna G. Van der Bom,⁶ and Karin Fijnvandraat¹

¹Department of Pediatric Hematology, Emma Children's Hospital, and ²Department of Vascular Medicine—Amsterdam Cardiovascular Sciences, Amsterdam University Medical Centers, University of Amsterdam, Amsterdam, The Netherlands; ³Department of Pediatrics, Tongji Hospital, Tongji Medical University, Wuhan, China; ⁴Department of Pediatrics, Nanfang Hospital, Southern Medical University, Guangzhou, China; ⁵Department of Pediatrics, Inha University Hospital, Incheon, Korea; and ⁶Department of Clinical Epidemiology, Leiden University Medical Center, Leiden University, Leiden, The Netherlands

KEY POINTS

- In this systematic review, incidence and mortality rates of intracranial hemorrhage in hemophilia were pooled for more precise estimates.
- Incidence and mortality rates of intracranial hemorrhage are higher in patients with hemophilia compared with the general population.

Intracranial hemorrhage (ICH) is a severe complication that is relatively common among patients with hemophilia. This systematic review aimed to obtain more precise estimates of ICH incidence and mortality in hemophilia, which may be important for patients, caregivers, researchers, and health policy makers. PubMed and EMBASE were systematically searched using terms related to "hemophilia" and "intracranial hemorrhage" or "mortality." Studies that allowed calculation of ICH incidence or mortality rates in a hemophilia population ≥ 50 patients were included. We summarized evidence on ICH incidence and calculated pooled ICH incidence and mortality in 3 age groups: persons of all ages with hemophilia, children and young adults younger than age 25 years with hemophilia, and neonates with hemophilia. Incidence and mortality were pooled with a Poisson-Normal model or a Binomial-Normal model. We included 45 studies that represented 54 470 patients, 809 151 person-years, and 5326 live births of patients with hemophilia. In persons of all ages, the pooled ICH incidence and mortality rates were 2.3 (95% confidence interval [CI], 1.2-4.8) and 0.8 (95% CI 0.5-1.2) per 1000 person-years, respectively. In children and young adults, the pooled ICH incidence and mortality rates were 7.4 (95% CI, 4.9-11.1) and 0.5 (95% CI,

0.3-0.9) per 1000 person-years, respectively. In neonates, the pooled cumulative ICH incidence was 2.1% (95% CI, 1.5-2.8) per 100 live births. ICH was classified as spontaneous in 35% to 58% of cases. Our findings suggest that ICH is an important problem in hemophilia that occurs among all ages, requiring adequate preventive strategies.

Introduction

Hemophilia A and B are bleeding disorders that are characterized by an X-linked inherited deficiency of coagulation factor VIII (FVIII) or IX (FIX). The clinical phenotype is dominated by the residual endogenous factor level, resulting in severe (< 1 IU/dL), moderate (1-5 IU/dL), and mild (6-40 IU/dL) forms.¹ Although joint and muscle bleeds are the hallmark of hemophilia, intracranial hemorrhage (ICH) can be considered the most severe complication. Intracranial bleeds may form serious life-threatening events and have been associated with considerable neurological sequelae in survivors.²⁻⁴

Various studies have assessed the occurrence of ICH in hemophilia, reporting wide ranges in incidence and mortality among different cohorts. In 2008, a literature review concluded that $\sim 3\%$ to 10% of patients with hemophilia experience an intracranial bleed during life. These numbers are based on patients who have primarily been treated on demand.⁵ In childhood, ICH seems to occur relatively frequently, which is illustrated by a recent study that reported an incidence of 6 events per 1000

person-years in children with hemophilia.⁶ Newborns seem to face an even higher risk for ICH. A systematic review estimated that neonates with hemophilia are 44 times more likely to experience an ICH compared with the general population.⁷ Regarding disease severity, patients with severe hemophilia are at increased risk for ICH compared with patients with nonsevere hemophilia. Nonetheless, a study in nonsevere hemophilia demonstrated that this group still has an increased standardized mortality rate of 3.5 from ICH compared with the general population.⁸ These findings indicate that ICH remains an important problem in all patients with hemophilia and that strategies to prevent this complication are crucial. Comprehensive knowledge on ICH in this population is needed to raise awareness and to support initiatives on prevention and treatment.

Diversity in study settings and small patient populations give rise to a wide range of reported incidences of ICH in hemophilia. Few pooled and precise estimates of ICH incidence and its associated mortality are available for the population with hemophilia. A systematic literature review with meta-analyses of

ICH epidemiology in hemophilia may provide insight into the burden of ICH and guide future prevention and management.

In this systematic review and meta-analysis we aimed to summarize currently available evidence on ICH incidence and to obtain more precise estimates of ICH incidence and mortality rates in 3 groups: persons with hemophilia of all ages, children and young adults with hemophilia who are younger than 25 years of age, and neonates with hemophilia.

Methods

This systematic review is reported in accordance with the Preferred Reporting Items for Systematic Reviews and Meta-Analysis statement.⁹ The protocol was written in advance and registered in PROSPERO (record ID 100278).

Study eligibility

Type of studies Eligible for inclusion were cross-sectional, longitudinal observational, and randomized studies reporting on incidence or mortality of ICH in congenital hemophilia, published as an article in a peer-reviewed journal. Studies had to provide sufficient data to enable calculation or reliable estimation of an incidence or mortality rate. No restrictions on publication dates or language were applied.

Type of patients Study populations had to include ≥ 50 patients who were representative of the hemophilia population in general, irrespective of hemophilia type, severity, or age limits. Studies that primarily evaluated patients with HIV, hepatitis C virus, hepatitis B virus, inhibitors against FVIII or FIX, acquired hemophilia, or any other bleeding disorder were excluded.

Type of outcome measures Studies had to report on ICH, defined as any intracranial bleed (including intraventricular, intraparenchymal, subarachnoid, subdural, and epidural bleeds), or mortality due to ICH. Studies that did not clearly differentiate between intra- and extracranial bleeds or ischemic and hemorrhagic strokes were excluded.

Search strategy

PubMed and EMBASE were searched using key terms related to "hemophilia" and either "intracranial hemorrhage" or "mortality" (full search strategy in supplemental Table 1, available on the *Blood* Web site). The search was developed under the supervision of a medical information specialist from the Amsterdam University Medical Center (Amsterdam UMC), Amsterdam, The Netherlands (René Spijker). Reference lists of included studies and other reviews were searched to identify any additional studies that were not retrieved through the literature search. The primary search was run on 12 April 2018, and an update of the search was performed on 12 May 2020.

Study selection

Two independent reviewers (A.-F.Z. and either J.S.J. or C.V.) screened titles and abstracts and full texts for eligibility. Any doubts about eligibility or disagreements were discussed with a senior author (S.C.G.). To avoid duplicate inclusion of individuals, studies were evaluated for recruitment periods and catchment areas. In case of overlapping patient cohorts, the study with the longest follow-up or the study that provided the most comprehensive data was included.

Data extraction

Data were extracted from included studies using a standardized data collection form. The following data were extracted: study characteristics (ie, publication year, observation period, design, geographic location), population characteristics (ie, distribution of age, type and severity of hemophilia, treatment, comorbidities), information on ICH (incidence and mortality of ICH, number of ICH-related deaths out of total number of deaths), nature of ICH (ie, location of hemorrhage, cause of bleeding), and the number of person-years of follow-up of the hemophilia study population. When the exact number of person-years was not reported, we estimated the number based on the available data, if possible. Otherwise, investigators of the original studies were requested to provide additional information on the number of person-years. Supplemental Table 3 summarizes the reported and estimated person-years of included studies.

Quality assessment

The methodological quality of studies was assessed by 2 reviewers independently (A.-F.Z. and either J.S.J. or C.V.) and discussed with a senior author (S.C.G.) in case of disagreement. We adapted the version of the Joanna Briggs Institute checklist for studies on prevalence data and added items derived from the Joanna Briggs Institute checklist for cohort studies specific for incidence data (supplemental Table 2).^{10,11}

Data synthesis

We performed analyses considering 3 groups: lifetime cohorts, children and young adults, and neonates.

Group 1: lifetime First, data were summarized for study populations including all ages or adults only. The pooled data were presented as single-event incidence rate and mortality rate per 1000 person-years.

Group 2: children and young adults Second, we analyzed study populations representing children or young adults younger than 25 years of age. The pooled data were presented as single-event incidence rate and mortality rate per 1000 person-years.

Group 3: neonatal period Third, we included study populations reporting on the neonatal period. The pooled data were presented as single-event cumulative incidence and mortality per 100 live births.

Statistical analyses

Heterogeneity between studies was explored by assessing the between-study variance (τ^2) and by visually estimating the extent to which confidence intervals (CIs) of studies overlapped. Because of acceptable heterogeneity, we pooled the results in a meta-analysis. Single-event incidence and mortality rates were pooled using a random-effects Poisson-Normal model. Proportions including single-event cumulative incidence and mortality were pooled using a random-effects Binomial-Normal model. These generalized linear mixed models are more appropriate than conventional methods for meta-analysis in the event of sparse or no event data and avoid the use of continuity corrections.¹² Exact 95% CIs for the studies with no events were calculated using Epishet (version 2015).¹³ Case fatality was calculated as the percentage of fatal ICH events out of all single

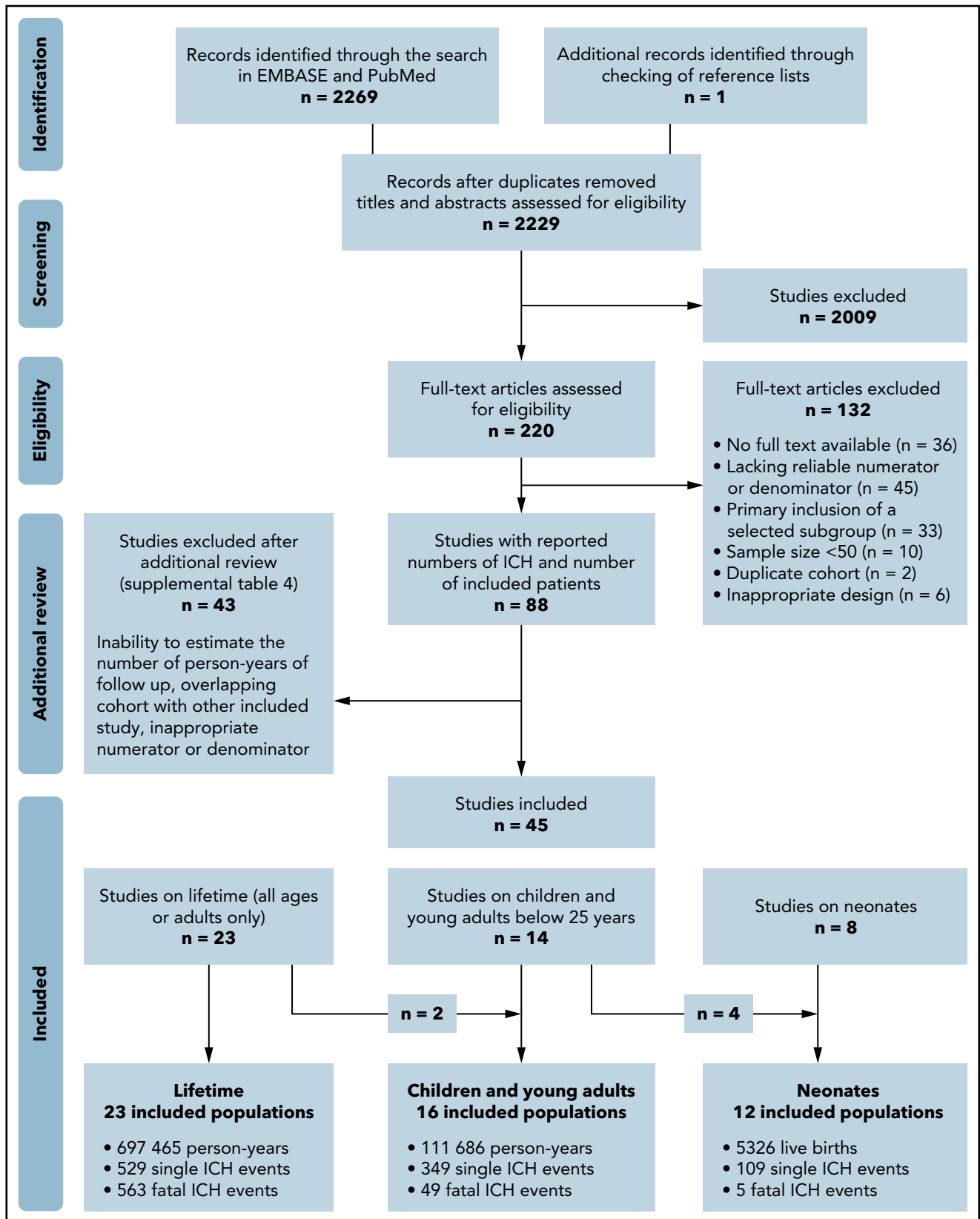


Figure 1. Flowchart of the search strategy. The presented number of single ICH events does not include cases from studies that reported on fatal ICH events only. These fatal events were solely used for the ICH mortality analyses.

ICH events in a population. Spontaneous ICH was calculated as the proportion of ICH events classified as spontaneous out of all ICH events in a population and pooled as proportions. Analyses were performed in R (version 3.6.1) with the metafor package.

Data evaluation

Forest plots were arranged by their sample size to visually assess small-study data trends. Sensitivity analyses were performed for studies that reported the exact numbers of person-years of follow-up, as well as for studies that met $\geq 80\%$ of the evaluated methodological quality items. In addition, separate analyses were performed for studies of children and young adults younger than 25 years excluding neonatal ICH events, and for study setting according to country income level based on the World Bank classification 2020 to 2021.

Results

Our search yielded 2229 unique hits that resulted in 220 studies that were identified as potentially relevant after title and abstract screening (Figure 1). After additional full-text review, a total of 45 studies were included. Study details are shown in Tables 1 and 2. We classified studies as reporting on lifetime populations ($n = 23$), children and young adults younger than 25 years of age ($n = 16$), and the neonatal period ($n = 12$). Two studies were lifetime cohorts with pediatric-specific data,^{8,14} and 4 studies were pediatric cohorts with neonatal data.^{6,15-17} The investigators of 21 studies were contacted to request additional information about the number of person-years. Six investigators provided this information, resulting in 18 studies that reported the exact numbers of person-years and 19 studies for which the number of person-years was estimated. Supplemental Table 4 summarizes the studies that appeared to meet the inclusion criteria but were excluded on further inspection.

Study characteristics

The studies reporting over lifetime described 48 105 patients and 697 465 person-years over 6 decades (study period: 1968-2016). The studies reporting on children and young adults younger than 25 years described 111 686 person-years over 5 decades (study period: 1975-2017). The studies reporting on the neonatal period described 5326 neonates over 5 decades (study period: 1970-2015). Figure 1 shows further details on the number of events in the different groups. The populations in this review were included in 43 countries (22 Europe, 4 East Asia, 2 Southeast Asia, 6 West Asia, 1 Australia, 2 North America, 4 South America, 2 Africa). The majority of studies were conducted in high-income settings, especially for lifetime and neonatal populations. In 51 265 patients for whom the disease severity was reported, 23 830 (46%) and 27 435 (54%) patients had severe and nonsevere hemophilia, respectively (Table 1).

Methodological quality

The critical appraisal of the included 45 studies can be found in supplemental Table 5. Six studies were included in multiple population groups and, therefore, were evaluated twice, which resulted in 51 evaluated studies. At least 80% of the quality items were met in 19 of these 51 studies. Reasons for not meeting quality items were most frequently related to a lack of description of diagnostic methods and unclear or inadequate handling of loss to follow-up.

ICH incidence

Figure 2 represents the pooled analyses of ICH incidence among the 3 age groups. Over lifetime, the pooled ICH incidence rate was 2.3 (95% CI, 1.2-4.8) per 1000 person-years, calculated over 11 studies. In children and young adults younger than 25 years, the pooled ICH incidence rate was 7.4 (95% CI, 4.9-11.1) per 1000 person-years, calculated over 12 studies. These findings suggest that ICH occurrence in hemophilia can be estimated at 0.23% and 0.74% per year for lifetime populations and children and young adults, respectively. When restricted to 7 pediatric studies without neonatal ICH, the pooled ICH incidence rate was 4.5 (95% CI, 2.7-7.5) per 1000 person-years (supplemental Figure 1E). In 1 pediatric study reporting incidence among different age categories, the highest ICH incidence rates were observed in children aged 0 to 4 years with 16.4, 18.4, 7.5, and 8.0 events per 1000 person-years per 1-year stratum, respectively (Table 2; supplemental Figure 3).³ In neonates, the pooled ICH cumulative incidence was 2.1% (95% CI, 1.5-2.8) per 100 live births, calculated over 12 studies. Hence, $\sim 2.1\%$ of newborns with hemophilia are expected to experience an ICH in the neonatal period.

ICH mortality

Figure 3 represents the pooled analyses of ICH mortality among the 3 age groups. Over lifetime, the pooled ICH mortality rate was 0.8 (95% CI, 0.5-1.2) per 1000 person-years, calculated over 16 studies. Case fatality ranged from 0% to 29%. A total of 3237 deaths were reported, of which 483 were related to intracranial bleeding (range, 4-36% of all deaths). In children and young adults younger than 25 years, the pooled ICH mortality rate was 0.5 (95% CI, 0.3-0.9) per 1000 person-years, calculated over 11 studies. When restricted to 5 pediatric studies without neonatal ICH, the pooled ICH mortality rate was 0.2 (95% CI, 0.1-0.6) per 1000 person-years (supplemental Figure 2E). Case fatality ranged from 0% to 33%. In neonates, the pooled ICH cumulative mortality was 0.2% (95% CI, 0.0-1.2) per 100 live births, calculated over 3 studies. Case fatality ranged from 0% to 29%. In 2 studies reporting mortality among different age categories, the highest ICH mortality rates were observed in children 0 to 4 years of age and in adults from age 40 to 50 years onward (Table 2; supplemental Figure 3).^{8,14}

Spontaneous ICH and locations

Over lifetime, 6 studies reported on ICH causes. A total of 231 of 447 events (52%) were classified as spontaneous, with a weighted pooled proportion of 0.58 (95% CI, 0.40-0.73).^{8,18-22} In children and young adult populations, 6 studies reported on ICH causes. A total of 53 of 151 events (35%) were classified as spontaneous, with a weighted pooled proportion of 0.35 (95% CI, 0.28-0.43).^{3,15,16,23-25} In neonates, 5 studies reported on ICH related to mode of delivery. An ICH occurred after 32 of 1488 (2%) spontaneous vaginal deliveries, 7 of 514 (1%) caesarean sections, and 14 of 140 (10%) assisted vaginal deliveries.²⁶⁻³⁰ The most frequently reported locations of ICH were intraparenchymal and subdural hemorrhages in all age groups (Table 3).

Sensitivity analyses

The results of all pooled analyses and sensitivity analyses are summarized in Table 4. The forest plots of the sensitivity analyses can be found in supplemental Figures 1 and 2. For lifetime and neonatal cohorts, the sensitivity analyses produced similar

Table 1. Study and population characteristics

Study	Setting	Period	Age limits, (mean, y)	Total, N	Type A, n	Type B, n	Disease severity, n (%)			Proph. n (%)	Inhib. n (%)	HIV ⁺ n (%)	HCV ⁺ n (%)	Study details
							Severe	Moderate	Mild					
Lifetime														
Khair et al ¹⁴	AHEAD*	2011-2016	No (21)	522	522	0	299 (57)	221 (42)	0	406 (78)	NR	NR	Prospective multicenter postauthorization study, patient diaries	
Zanon et al ¹⁹	Italy	1987-2008	No	3683	NR	NR	NR	NR	NR	NR	NR	NR	Survey among HTCs over 1987-2008, prospective follow-up over 2003-2008	
Fransen van de Putte et al ¹⁸	Netherlands	≤2010	≥18 y (54)	408	365	43	204 (50)	204 (nonsevere) (50)	NR	NR	49 (12)	229 (56)	Retrospective single-center study	
Loomans et al ⁸	INSIGHT†	1980-2010	No	2709	2709	0	0	719 (27)	1990 (73)	NR	NR	NR	Retrospective multicenter study	
Koumbarelis et al ⁴¹	Greece	1972-1993	No	531	460	71	319 (60)	92 (17)	227 (43)	0	38 (7)	156 (29)	Single-center registry	
Plug et al ⁴⁵	Netherlands	1992-2001	No (32)	967	796	171	386 (40)	167 (17)	414 (43)	NR	50 (5)	NR	National survey, medical files and municipal registries	
Rosendaal et al ⁴⁴	Netherlands	1973-1986	No (23)	717	616	101	321 (45)	169 (24)	227 (32)	129 (18)	30 (4)	NR	National survey, medical files and municipal registries	
Triemstra et al ⁴⁶	Netherlands	1986-1992	No (30)	919	796	123	381 (41)	172 (19)	366 (40)	200 (22)	22 (2)	NR	National survey, medical files and municipal registries	
Nuss et al ²¹	USA	1993-1997	No	3269	2579	690	1371 (42)	779 (24)	1028 (31)	82 (3)	146 (4)	1346 (41)	Case-control in HSS database, ICD codes & medical files	
Yoo et al ⁵⁵	Korea	1991-2012	No	2048	1675	373	1354 (66)	452 (22)	226 (11)	NR	79 (4)	NR	National registry	
Darby et al ¹⁴	UK	1977-1998	<85 y	6018	4874	1144	1320 (22)	1476 (25)	3222 (54)	NR	NR	0	UKHCDO, all patients registered at UK HTCs	
Witmer et al ²²	USA	1998-2008	>2 y	10 262	8087	2175	5581 (54)	2398 (24)	2283 (22)	3052 (30)	586 (6)	4107 (40)	Prospective case-control UDC database	

CVD, cardiovascular disease; HCV, hepatitis C virus; HGDS, Hemophilia Growth and Development Study; HSS, Haemophilia Surveillance System; HTC, hemophilia treatment center; ICD, International Classification of Disease; IHSS, Indiana Haemophilia Surveillance System; Inhib., inhibitor positive; NR, not reported; Proph., prophylaxis; UDC, Universal Data Collection surveillance system; UK, United Kingdom; UKHCDO, United Kingdom Haemophilia Centre Doctors' Organisation.

*Austria, Australia, Belgium, Brazil, Canada, Denmark, France, Germany, Greece, Italy, Spain, Sweden, Switzerland, UK, Colombia, Czech Republic, Hungary, Poland, Portugal, Russia, and Slovenia.

†Austria, Australia, Belgium, Finland, Germany, Italy, Netherlands, Spain, Sweden, and UK.

‡Austria, Australia, Belgium, Canada, China, Denmark, Finland, France, Germany, Greece, Ireland, Italy, Netherlands, Spain, Sweden, Switzerland, UK, USA, Israel, and Turkey.

§Median instead of mean.

||A total of 333 patients were included, history of ICH was available for 309 patients. Numbers for severity and type do not add up because of missing data.

¶Argentina, Brazil, South Africa, Thailand, Egypt, Singapore, Venezuela, and Iran.

#Finland, France, Germany, Italy, Netherlands, Spain, UK, and Slovakia.

**Oman, United Arab Emirates, Kuwait, and Saudi Arabia.

††Austria, Belgium, Canada, Denmark, Finland, France, Germany, Greece, Ireland, Italy, Netherlands, Norway, Spain, Sweden, Switzerland, UK, Israel, and Portugal.

Table 1. (continued)

Study	Setting	Period	Age limits, (mean, y)	Total, N	Type A, n	Type B, n	Disease severity, n (%)			Proph. n (%)	Inhib. n (%)	HIV+ n (%)	HCV+ n (%)	Study details
							Severe	Moderate	Mild					
Shih et al ⁶⁶	Taiwan	1997-2013	No (33)	795	658	137	795 (100)	0	0	NR	0	218 (27)	29 (4)	Retrospective national insurance database
Fransen van de Putte et al ⁵⁷	Netherlands & UK	≤2011	≥30 y (50)	709	594	113	344 (48)	365 nonsevere (52)		223 (31)	NR	76 (11)	228 (32)	Retrospective study into lifetime CVD events of a living cohort
Lövdahl et al ⁶⁸	Sweden	1968-2009	No	1431	NR	NR	384 (41)	145 (16)	405 (43)	NR	NR	96 (7)	NR	Hemophilia registry and death, migration, and medical birth registries, ICD codes
Reitter et al ⁵⁹	Austria	1983-2006	No (28)	226	207	19	128 (57)	14 (6)	84 (37)	NR	21 (9)	74 (33)	136 (60)	Retrospective survival analysis, death registry, medical files, ICD codes
Sharathkumar et al ⁶⁰	USA	≤2008	≥35 y (53)	185	102	83	47 (25)	57 (31)	81 (44)	0	8 (4)	27 (15)	125 (68)	Retrospective study into lifetime CVD events of a living cohort
Rizza and Spooner ⁶¹	UK	1976-1980	<85 y	5098	4321	777	2179 (43)	2491 nonsevere (49)		NR	265 (5)	NR	NR	UKHCDO, all patients registered at UK HTC's
Rizza et al ⁶²	UK	1981-1996	<85 y	5890	4826	1064	1878 (32)	3723 nonsevere (63)		NR	261 (4)	NR	NR	UKHCDO, all patients registered at UK HTC's
Kim et al ⁶³	Korea	≤1987	No	498	425	73	273 (55)	182 (37)	43 (9)	NR	NR	2 (0)	11 (3)	Survey among all HTC's in Korea
Chansumrit et al ²⁰	Thailand	1971-2000	No (17)	164	138	26	64 (39)	81 (49)	19 (16)	0	NR	7 (1)	43 (26)	Retrospective survival analysis
Okolo et al ⁶⁴	USA	≤2013	No (30)	704	456	248	233 (33)	185 (26)	267 (38)	201 (29)	16 (2)	28 (4)	134 (19)	Surveillance study (IHSS), vital statistics, medical files, birth registry, claims
Fukutake et al ⁶⁵	Japan	2007-2012	≥1 y (26)	352	352	0	266 (76)	63 (18)	21 (6)	195 (55)	9 (3)	NR	NR	Retrospective and prospective multicenter postauthorization study

CVD, cardiovascular disease; HCV, hepatitis C virus; HGDS, Hemophilia Growth and Development Study; HSS, Haemophilia Surveillance System; HTC, hemophilia treatment center; ICD, International Classification of Disease; IHSS, Indiana Haemophilia Surveillance System; Inhib, inhibitor positive; NR, not reported; Proph., prophylaxis; UDC, Universal Data Collection surveillance system; UK, United Kingdom; UKHCDO, United Kingdom Haemophilia Centre Doctors' Organisation.

*Austria, Australia, Belgium, Brazil, Canada, Denmark, France, Germany, Greece, Italy, Spain, Sweden, Switzerland, UK, Colombia, Czech Republic, Hungary, Poland, Portugal, Russia, and Slovenia.

†Austria, Australia, Belgium, Finland, Germany, Italy, Netherlands, Spain, Sweden, and UK.

‡Austria, Australia, Belgium, Canada, China, Denmark, Finland, France, Germany, Greece, Ireland, Italy, Netherlands, Spain, Sweden, Switzerland, UK, USA, Israel, and Turkey.

§Median instead of mean.

||A total of 333 patients were included, history of ICH was available for 309 patients. Numbers for severity and type do not add up because of missing data.

¶Argentina, Brazil, South Africa, Thailand, Egypt, Singapore, Venezuela, and Iran.

#Finland, France, Germany, Italy, Netherlands, Spain, UK, and Slovakia.

**Oman, United Arab Emirates, Kuwait, and Saudi Arabia.

††Austria, Belgium, Canada, Denmark, Finland, France, Germany, Greece, Ireland, Italy, Netherlands, Norway, Spain, Sweden, Switzerland, UK, Israel, and Portugal.

Table 1. (continued)

Study	Setting	Period	Age limits, (mean, y)	Total, N	Type A, n	Type B, n	Disease severity, n (%)			Proph. n (%)	Inhib. n (%)	HIV ⁺ n (%)	HCV ⁺ n (%)	Study details
							Severe	Moderate	Mild					
Children and young adults														
Andersson et al ³	PedNett	2011-2015	1 mo to 22 y (9)	1515	1250	265	1515 (100)	0	0	NR	0	NR	NR	Registry with 5-y retrospective data and 4-y prospective data (2011-2015)
Travaree et al ²³	Canada	1996-2004	1 mo to 18 y (10)	275	218	57	116 (42)	159 nonsevere (58)	88 (32)	12 (4)	NR	NR	NR	Retrospective single-center study
Hu et al ²⁴	China	2009-2014	Children	126	126	0	42 (33)	64 (51)	20 (16)	36 (29)	2 (2)	NR	NR	Retrospective study of all patients receiving treatment during study period
Haque et al ⁶⁶	China	2005-2017	Children	226	170	56	91 (40)	88 (39)	47 (21)	NR	9 (0)	NR	NR	Retrospective single-center study
Loomans et al ⁸	INSIGHT†	1980-2010	≤19 y	NR	NR	0	0	NR	NR	NR	NR	NR	NR	Retrospective multicenter study
Darby et al ¹⁴	UK	1977-1998	≤24 y	NR	NR	NR	NR	NR	NR	NR	NR	NR	NR	UKHCDO, all patients registered at UK HTCs
Chalmers et al ⁶	UK	2003-2015	≤16 y	1321	1096	225	655 (50)	666 nonsevere (50)	NR	NR	NR	NR	NR	UKHCDO, retrospective study of database
Bladen et al ¹⁷	UK	1987-2013	Children	431	364	67	283 (66)	34 (8)	107 (25)	NR	NR	NR	NR	Retrospective single-center study
Revel-Vilk et al ¹⁶	Canada	1984-2000	≤18 y (9§)	172	NR	NR	NR	NR	NR	NR	0	NR	NR	Retrospective study into lifetime ICH of a living cohort
Carneiro et al ⁶⁷	Brazil	NR	NR (13)	50	38	12	35 (70)	15 (30)	0	33 (66)	5 (10)	NR	NR	Cross-sectional random sample of a living cohort with retrospective ICH assessment
	Canada		NR (12)	50	41	9	35 (70)	15 (30)	0	38 (76)	6 (12)	NR	NR	
Nelson et al ⁶⁸	USA	1989-1994	≤19 y (12§)	309	273	50	246 (74)	63 (19)	23 (7)	NR	NR	207 (67)	NR	Retrospective study of living children enrolled in HGDS study

CVD, cardiovascular disease; HCV, hepatitis C virus; HGDS, Hemophilia Growth and Development Study; HSS, Haemophilia Surveillance System; HTC, hemophilia treatment center; ICD, International Classification of Disease; IHSS, Indiana Haemophilia Surveillance System; Inhib., inhibitor positive; NR, not reported; Proph., prophylaxis; UDC, Universal Data Collection surveillance system; UK, United Kingdom; UKHCDO, United Kingdom Haemophilia Centre Doctors' Organisation.

*Austria, Australia, Belgium, Brazil, Canada, Denmark, France, Germany, Greece, Italy, Spain, Sweden, Switzerland, UK, Colombia, Czech Republic, Hungary, Poland, Portugal, Russia, and Slovenia.

†Austria, Australia, Belgium, Finland, Germany, Italy, Netherlands, Spain, Sweden, and UK.

‡Austria, Australia, Belgium, Canada, China, Denmark, Finland, France, Germany, Greece, Ireland, Italy, Netherlands, Spain, Sweden, Switzerland, UK, USA, Israel, and Turkey.

§Median instead of mean.

||A total of 333 patients were included, history of ICH was available for 309 patients. Numbers for severity and type do not add up because of missing data.

¶Argentina, Brazil, South Africa, Thailand, Egypt, Singapore, Venezuela, and Iran.

#Finland, France, Germany, Italy, Netherlands, Spain, UK, and Slovakia.

**Oman, United Arab Emirates, Kuwait, and Saudi Arabia.

††Austria, Belgium, Canada, Denmark, Finland, France, Germany, Greece, Ireland, Italy, Netherlands, Norway, Spain, Sweden, Switzerland, UK, Israel, and Portugal.

Table 1. (continued)

Study	Setting	Period	Age limits, (mean, y)	Total, N	Type A, n	Type B, n	Disease severity, n (%)			Proph. n (%)	Inhib. n (%)	HIV ⁺ n (%)	HCV ⁺ n (%)	Study details	
							Severe	Moderate	Mild						
Poonmoose et al ⁶⁹	Musfit#	2005-2010	5-17 y	255	220	35	255 (100)	0	0	39 (15)	0	NR	NR	Prospective multicenter study	
Klinge et al ¹⁵	Germany	1975-1998	Children	744	602	142	507 (68)	235 nonsevere (32)			NR	NR	NR	NR	Survey among HTCs over children born 1975-1997, retrospective ICH assessment
Meunier et al ⁷⁰	France	<2012	≤25 y	209	183	26	171 (82)	38 (18)			169 (81)	0	NR	NR	Retrospective multicenter study of a living cohort
Öner et al ⁷¹	Turkey	1985-2017	<18 y	135	113	22	64 (47)	41 (30)			NR	17 (13)	NR	NR	Retrospective single-center study
Kulkarni et al ²⁵	USA	2004-2011	<2 y	547	450	97	326 (60)	131 (24)			NR	109 (20)	NR	NR	UDC database enrolling babies with ≥1 visit between 24 and 30 mo of age
Neonates															
Ljung et al ²⁶	Sweden	1970-1990	Perinatal	117	101	16	89 (76)	28 (24)			0	NR	NR	NR	National retrospective analysis
MacLean et al ⁷²	Netherlands	1985-2002	Postnatal	73	60	13	25 (34)	9 (12)			39 (53)	NR	NR	NR	Retrospective analysis of a living cohort
Kenet et al ²⁷	USA	2003-2010	<1 mo	633	NR	NR	NR	NR			NR	5 (1)	NR	NR	UDC database enrolling babies diagnosed within 1 mo of age
Richards et al ²⁸	EHTSB#	1990-2008	≤28 d	508	429	78	257 (51)	101 (20)			149 (29)	NR	NR	NR	Retrospective multicenter study
Nazir et al ²⁹	Gulf region**	1998-2015	<2 wk	163	163	0	163 (100)	0			0	NR	NR	NR	Study with retrospective data (1998-2013) and prospective data (2013-2015)
Palomo Bravo et al ⁷³	Spain	2000-2012	Perinatal	88	80	8	42 (48)	12 (14)			34 (39)	NR	NR	NR	Retrospective study of consecutively born children followed up for ≥1 y

CVD, cardiovascular disease; HCV, hepatitis C virus; HGDS, Hemophilia Growth and Development Study; HSS, Haemophilia Surveillance System; HTC, hemophilia treatment center; ICD, International Classification of Disease; IHSS, Indiana Haemophilia Surveillance System; Inhib, inhibitor positive; NR, not reported; Proph., prophylaxis; UDC, Universal Data Collection surveillance system; UK, United Kingdom; UKHCCO, United Kingdom Haemophilia Centre Doctors' Organisation.
 *Austria, Australia, Belgium, Brazil, Canada, Denmark, France, Germany, Greece, Italy, Spain, Sweden, Switzerland, UK, Colombia, Czech Republic, Hungary, Poland, Portugal, Russia, and Slovenia.
 †Austria, Australia, Belgium, Finland, Germany, Italy, Netherlands, Spain, Sweden, and UK.
 ‡Austria, Australia, Belgium, Canada, China, Denmark, Finland, France, Germany, Greece, Ireland, Italy, Netherlands, Spain, Sweden, Switzerland, UK, USA, Israel, and Turkey.
 §Median instead of mean.
 ||A total of 333 patients were included, history of ICH was available for 309 patients. Numbers for severity and type do not add up because of missing data.
 ¶Argentina, Brazil, South Africa, Thailand, Egypt, Singapore, Venezuela, and Iran.
 #Finland, France, Germany, Italy, Netherlands, Spain, UK, and Slovakia.
 **Oman, United Arab Emirates, Kuwait, and Saudi Arabia.
 ††Austria, Belgium, Canada, Denmark, Finland, France, Germany, Greece, Ireland, Italy, Netherlands, Norway, Spain, Sweden, Switzerland, UK, Israel, and Portugal.

Table 1. (continued)

Study	Setting	Period	Age limits, (mean, y)	Total, N	Type A, n	Type B, n	Disease severity, n (%)			Proph. n (%)	Inhib. n (%)	HIV ⁺ n (%)	HCV ⁺ n (%)	Study details
							Severe	Moderate	Mild					
Andersson et al ³⁰	PedNet††	2000-2015	≤28 d	926	803	123	786 (85)	140 (15)	0	NR	NR	NR	NR	Prospective study of children consecutively born with ≥1 follow-up visit
Yoffe and Buchanan ⁷⁴	USA	1977-1987	Neonatal	150	119	31	NR	NR	NR	NR	NR	NR	NR	Retrospective analysis of a living cohort
Klinge et al ¹⁵	Germany	1975-1997	<1 wk	744	602	142	507 (68)	129 (17)	108 (15)	NR	NR	NR	NR	Survey among HTCs over children born 1975-1997, retrospective ICH assessment
Revel-Vilk et al ¹⁶	Canada	1984-2000	<1 mo	172	NR	NR	NR	NR	NR	NR	NR	NR	NR	Retrospective study into lifetime ICH among a living cohort
Bladen et al ¹⁷	UK	1987-2013	Neonatal	431	364	67	283 (66)	34 (8)	107 (25)	NR	NR	NR	NR	Retrospective single-center study
Chalmers et al ⁶	UK	2003-2015	<1 mo	1321	1096	225	655 (50)	666 nonsevere (50)		NR	NR	NR	NR	UKHCDO, retrospective study of database

CVD, cardiovascular disease; HCV, hepatitis C virus; HGDS, Hemophilia Growth and Development Study; HSS, Haemophilia Surveillance System; HTC, hemophilia treatment center; ICD, International Classification of Disease; IHSS, Indiana Haemophilia Surveillance System; Inhib., inhibitor positive; NR, not reported; Proph., prophylaxis; UDC, Universal Data Collection surveillance system; UK, United Kingdom; UKHCDO, United Kingdom Haemophilia Centre Doctors' Organisation.

*Austria, Australia, Belgium, Brazil, Canada, Denmark, France, Germany, Greece, Italy, Spain, Sweden, Switzerland, UK, Colombia, Czech Republic, Hungary, Poland, Portugal, Russia, and Slovenia.

†Austria, Australia, Belgium, Finland, Germany, Italy, Netherlands, Spain, Sweden, and UK.

‡Austria, Australia, Belgium, Canada, China, Denmark, Finland, France, Germany, Greece, Ireland, Italy, Netherlands, Spain, Sweden, Switzerland, UK, USA, Israel, and Turkey.

§Median instead of mean.

||A total of 333 patients were included, history of ICH was available for 309 patients. Numbers for severity and type do not add up because of missing data.

¶Argentina, Brazil, South Africa, Thailand, Egypt, Singapore, Venezuela, and Iran.

#Finland, France, Germany, Italy, Netherlands, Spain, UK, and Slovakia.

**Oman, United Arab Emirates, Kuwait, and Saudi Arabia.

††Austria, Belgium, Canada, Denmark, Finland, France, Germany, Greece, Ireland, Italy, Netherlands, Norway, Spain, Sweden, Switzerland, UK, Israel, and Portugal.

Table 2. ICH incidence and mortality rates, case fatality and proportions of ICH-related deaths in patients with hemophilia

Study	Persons with ICH, n	Total ICH events, n	Fatal ICH, n	Person-y	ICH single-event incidence rate per 1000 person-y	ICH multiple-event incidence rate per 1000 person-y	ICH mortality rate per 1000 person-y	Case fatality, %	Deaths caused by ICH/total deaths, n/N (%)
Lifetime: reported person-y									
Khair et al ⁵⁴	2	2	NR	811	2.5	2.5	NR	NR	NR
Zanon et al ¹⁹									
1987-2008	88	112	22	130692	0.7	0.9	0.2	25	NR
2003-2008	38	NR	NR	19941	1.9	NR	NR	NR	NR
Fransen van de Putte et al ¹⁸	35	39	9	14574	2.4	2.7	0.6	25	9/78 (12)
Loomans et al ⁸	NR	NR	17	64208	NR	NR	0.3	NR	17/148 (11)
0-9			2	831			0.2		
10-19			1	122			0.1		
20-29			1	932			0.1		
30-39			0	208			0		
40-49			2	8713			0.2		
50-59			4	6368			0.6		
60-69			5	3892			1.3		
70-79			2	1699			1.2		
>79			0	444			0		
Koumbarelis et al ⁴¹	NR	NR	16	8641	NR	NR	1.9	NR	16/78 (21)
Plug et al ⁴⁵	NR	NR	4	8868	NR	NR	0.5	NR	4/94 (4)
Rosendaal et al ⁴⁴	NR	NR	3	7788	NR	NR	0.4	NR	3/43 (7)
Triemstra et al ⁴⁶	NR	NR	9	5753	NR	NR	1.6	NR	9/45 (20)
Nuss et al ²¹	80	88	16	13930	5.7	6.3	1.2	20	NR
Yoo et al ⁵⁵	NR	NR	50	29434	NR	NR	1.7	NR	50/137 (36)

Studies are categorized according to group (lifetime; children and young adults; neonates) and how person-y of follow-up were retrieved (reported or estimated). The number of persons with ICH was used to calculate the ICH single-event incidence rate. The number of ICH events was used to calculate the ICH multiple-event incidence rate.

NR, not reported.

*Neonatal ICH not included, specified for studies within the group "children and young adults."

†This number was retrieved from a subset of patients who entered a prospective 4-y follow-up. All 45 deaths occurred in HIV+ patients.

‡The total number of deceased patients in this pediatric cohort was known, but neonates were not distinguished from older children.

Table 2. (continued)

Study	Persons with ICH, n	Total ICH events, n	Fatal ICH, n	Person-y	ICH single-event incidence rate per 1000 person-y	ICH multiple-event incidence rate per 1000 person-y	ICH mortality rate per 1000 person-y	Case fatality, %	Deaths caused by ICH/total deaths, n/N (%)
Darby et al ¹⁴	NR	NR	168	98750	NR	NR	1.7	NR	168/706 (24)
0-4			14	6308			2.2		
5-14			2	15000			0.1		
15-24			7	20714			0.3		
25-34			10	14737			0.7		
35-44			19	13529			1.4		
45-54			23	10655			2.2		
55-64			37	7477			4.9		
65-74			41	4674			8.8		
75-84			14	1750			8.6		
Witmer et al ²²	199	NR	39	51026	3.9	NR	0.8	20	NR
Shih et al ⁵⁶	NR	90	NR	11140	NR	8.1	NR	NR	NR
>18		58		7184		8.1			
Lifetime: estimated person-y									
Fransen van de Putte et al ⁵⁷	11	NR	NR	35260	0.3	NR	NR	NR	NR
Lövdahl et al ⁵⁸	NR	NR	15	63250	NR	NR	0.2	NR	15/382 (4)
Reitter et al ⁵⁹	NR	NR	7	4272	NR	NR	1.6	NR	7/96 (7)
Sharathkumar et al ⁶⁰	3	3	NR	9713	0.3	0.3	NR	NR	NR
Rizza and Spooner ⁶¹	NR	NR	30	25754	NR	NR	1.2	NR	30/107 (28)
Rizza et al ⁶²	NR	NR	148	87962	NR	NR	1.7	NR	148/1298 (11)
Kim et al ⁶³	48	NR	3	5878	8.2	NR	0.5	6	NR
Chuansumrit et al ²⁰	24	41	7	1492	16.1	27.5	4.7	29	7/25 (28)
Okolo et al ⁶⁴	38	NR	NR	17600	2.2	NR	NR	NR	NR
Fukutake et al ⁶⁵	1	1	0	669	1.5	1.5	0	0	0/0

Studies are categorized according to group (lifetime; children and young adults; neonates) and how person-y of follow-up were retrieved (reported or estimated). The number of persons with ICH was used to calculate the ICH single-event incidence rate. The number of ICH events was used to calculate the ICH multiple-event incidence rate.

NR, not reported.

*Neonatal ICH not included, specified for studies within the group "children and young adults."

†This number was retrieved from a subset of patients who entered a prospective 4-y follow-up. All 45 deaths occurred in HIV+ patients.

‡The total number of deceased patients in this pediatric cohort was known, but neonates were not distinguished from older children.

Table 2. (continued)

Study	Persons with ICH, n	Total ICH events, n	Fatal ICH, n	Person-y	ICH single-event incidence rate per 1000 person-y	ICH multiple-event incidence rate per 1000 person-y	ICH mortality rate per 1000 person-y	Case fatality, %	Deaths caused by ICH/total deaths, n/N (%)
Children and young adults: reported person-y									
Anderson et al ³	29*	29*	2*	8038	3.6*	3.6*	0.3*	7	NR
0 to <1	4			244	16.4				
1 to <2	9			489	18.4				
2 to <3	4			535	7.5				
3 to <4	4			499	8.0				
4 to <5	2			508	3.9				
5 to <6	1			494	2.0				
6 to <13	2			3247	0.6				
13 to <19	3			1878	1.6				
19 to <22	0			145	0				
Trivaree et al ²³	8*	11*	0*	1584	5.0*	7.3*	0*	0	NR
Hu et al ²⁴	13*	13*	0*	653	19.9*	19.9*	0*	NR	NR
Haque et al ⁶⁶	52	61	5	1444	36.0	42.2	3.5	10	NR
Loomans et al ⁶	NR	NR	3	21953	NR	NR	0.1	NR	NR
0-9			2	10831			0.2		
10-19			1	11122			0.1		
Darby et al ¹⁴	NR	NR	23	42164	NR	NR		NR	23/51 (45)
0-4			14	6450			0.5		
5-14			2	15000			2.2		
15-24			7	714			0.1		

Studies are categorized according to group (lifetime; children and young adults; neonates) and how person-y of follow-up were retrieved (reported or estimated). The number of persons with ICH was used to calculate the ICH single-event incidence rate. The number of ICH events was used to calculate the ICH multiple-event incidence rate.

NR, not reported.

*Neonatal ICH not included, specified for studies within the group "children and young adults."

†This number was retrieved from a subset of patients who entered a prospective 4-y follow-up. All 45 deaths occurred in HIV+ patients.

‡The total number of deceased patients in this pediatric cohort was known, but neonates were not distinguished from older children.

Table 2. (continued)

Study	Persons with ICH, n	Total ICH events, n	Fatal ICH, n	Person-y	ICH single-event incidence rate per 1000 person-y	ICH multiple-event incidence rate per 1000 person-y	ICH mortality rate per 1000 person-y	Case fatality, %	Deaths caused by ICH/total deaths, n/N (%)
Chalmers et al ⁶	54 36*	59 41*	8	9000	6.0 4.0*	6.6 4.6*	0.9	15	NR
Children and young adults: estimated person-y									
Bladen et al ¹⁷	26 12*	30 16*	4 0*	4691	5.5 2.6*	6.4 3.4*	0.9 0*	15 0*	NR
Revel-Vilk et al ¹⁶	18 13*	25 20*	NR	1582	11.4 8.2*	15.8 12.6*	NR	NR	NR
Carneiro et al ⁶⁷	9	9	NR	650	13.8	13.8	NR	NR	NR
Brazil	4	4	NR	605	6.6	6.6	NR	NR	NR
Canada	36	48	NR	3832	9.4	12.5	NR	NR	2/45 (0)†
Neilson et al ⁶⁸	3*	3*	1*	1145	2.6*	2.6*	0.9*	33	1/2 (50)
Poonnoose et al ⁶⁹	30	NR	1	7466	4.0	NR	0.1	3	NR
Klinge et al ¹⁵	19*	NR	NR	4198	2.5*	NR	NR	NR	NR
Meunier et al ⁷⁰	22	NR	NR	1587	5.0	5.0	1.3	25	2/2 (100)
Öner et al ⁷¹	8	8	2	1094	33.8	42.0	NR	NR	NR
Kulkarni et al ²⁵	37	46	NR						

Studies are categorized according to group (lifetime: children and young adults; neonates) and how person-y of follow-up were retrieved (reported or estimated). The number of persons with ICH was used to calculate the ICH single-event incidence rate. The number of ICH events was used to calculate the ICH multiple-event incidence rate.

NR, not reported.

*Neonatal ICH not included, specified for studies within the group "children and young adults."

†This number was retrieved from a subset of patients who entered a prospective 4-y follow-up. All 45 deaths occurred in HIV+ patients.

‡The total number of deceased patients in this pediatric cohort was known, but neonates were not distinguished from older children.

Table 2. (continued)

Study	Persons with ICH, n	Total ICH events, n	Fatal ICH, n	Person-y	ICH single-event incidence rate per 1000 person-y	ICH multiple-event incidence rate per 1000 person-y	ICH mortality rate per 1000 person-y	Case fatality, %	Deaths caused by ICH/total deaths, n/N (%)
Neonates									
Ljung et al ²⁶	4	NR	NR	117	3.4	NR	NR	NR	NR
MacLean et al ⁷²	1	NR	NR	73	1.4	NR	NR	NR	NR
Kenet et al ²⁷	22	NR	NR	633	3.5	NR	NR	NR	NR
Richards et al ²⁸	4	NR	0	508	0.8	NR	0	0	NR
Nazir et al ²⁹	5	5	NR	163	3.1	3.1	NR	NR	NR
Palomo Bravo et al ⁷³	0	0	NR	88	0	0	NR	NR	NR
Andersson et al ³⁰	20	NR	1	926	2.2	NR	0.1	5	NR
Yoffe and Buchanan ⁷⁴	5	5	NR	150	3.3	3.3	NR	NR	NR
Klinge et al ¹⁵	11	NR	NR	744	1.5	NR	NR	NR	NR
Revel-Vilk et al ¹⁶	5	5	NR	172	2.9	2.9	NR	NR	NR
Bladen et al ¹⁷	14	NR	4	431	3.2	NR	0.9	29	NR
Chalmers et al ⁶	18	NR	NR†	1321	1.4	NR	NR	NR	NR

Studies are categorized according to group (lifetime; children and young adults; neonates) and how person-y of follow-up were retrieved (reported or estimated). The number of persons with ICH was used to calculate the ICH single-event incidence rate. The number of ICH events was used to calculate the ICH multiple-event incidence rate.

NR, not reported.

*Neonatal ICH not included, specified for studies within the group "children and young adults."

†This number was retrieved from a subset of patients who entered a prospective 4-y follow-up. All 45 deaths occurred in HIV+ patients.

‡The total number of deceased patients in this pediatric cohort was known, but neonates were not distinguished from older children.

ICH incidence and mortality rates. For children and young adults, the sensitivity analyses yielded higher ICH incidence rates when studies with reported exact number of person-years were included and lower ICH incidence rates when studies that met $\geq 80\%$ of the quality items were included. Similar ICH mortality rates were found. No consistent differences in ICH rates were observed between hemophilia A and B (supplemental Table 6). Higher ICH rates were reported for adult and pediatric populations in nonhigh-income settings compared with high-income countries (supplemental Table 7).

Discussion

In this systematic review, we summarized the data from 45 studies to obtain more precise estimates of ICH incidence and mortality rates in hemophilia. We observed peak incidences among neonates, with a decline in childhood, and a lower ICH incidence found for the lifetime cohorts. For half of the included studies the exact number of observed person-years was reported, and 37% of all studies met $\geq 80\%$ of the methodological quality items. Still, the sensitivity analyses yielded robust pooled estimates for the majority of the evaluations. An exception formed the inconclusive results of the sensitivity analyses for ICH incidence rates in children and young adults younger than 25 years. This may be explained by greater differences in setting and the different proportions of neonates among studies. Indeed, heterogeneity of data was considerable because of the diversity in settings and populations. The most important source of heterogeneity seemed to be the large geographic variation in ICH risk, because studies conducted in nonhigh-income countries reported substantially higher ICH incidences compared with studies from high-income countries. In addition, it is likely that other factors, including age, disease severity, and treatment, contributed to clinical heterogeneity.

ICH incidence and mortality

The observed ICH rates in hemophilia were higher compared with the general populations among all age groups addressed in this review. Neonates have the highest risk of ICH, which is confirmed by recent work from the PedNet group in severe hemophilia demonstrating that neonates were at 11.2 times higher risk for ICH compared with 1- to 12-month-old children.⁴ Moreover, the risk of ICH in neonates with hemophilia is strongly increased compared with neonates in the general population. A large study of term infants reported 361 intracranial bleeding episodes per 583 340 live births (0.062% per 100 live births).³¹ Comparing this with our pooled estimate of 2.1% per 100 live births, hemophilic neonates have a 33-fold higher risk for ICH than do newborns in the general population.

Despite the decrease in ICH risk after the neonatal period, ICH remains relatively common in children and young adults with hemophilia. This risk seems most profound in the group of infants and toddlers, which is supported by previous work reporting a median age at ICH of 2 years (interquartile range, 0.6-7.3) in a pediatric hemophilia population.³² Our pooled estimate of 7.4 cases per 1000 person-years for children and young adults with hemophilia decreased to a pooled estimate of 4.5 cases per 1000 person-years when neonatal ICH was excluded. This reflects the important contribution of neonatal bleeds to the high ICH incidence in patients up to 25 years of age.

Nonetheless, the pooled ICH incidence rates in both groups are considerably higher than the risk for intraparenchymal and subarachnoid hemorrhage in the general pediatric population, which is estimated at 0.01 cases per 1000 person-years.^{33,34} For subdural hematoma, the incidence was 0.13 per 1000 person-years for infants aged 0 to 2 years in the general population.³⁵ Additionally, the estimated death rate for childhood hemorrhagic stroke in the Global Burden of Disease study 2013 was 0.01 cases per 1000.³⁶ These data suggest that young children with hemophilia are a vulnerable group, and increased counseling and protection may be required.

Additionally, our pooled ICH incidence rate of 2.3 per 1000 person-years in patients with hemophilia over lifetime is higher compared with the general population, in which the incidences of intracerebral hemorrhage, subarachnoid hemorrhage, and chronic subdural hematoma were estimated at 0.25, 0.09, and 0.17 cases per 1000 person-years, respectively.³⁷⁻³⁹ Also for mortality rates, our pooled ICH estimate of 0.8 per 1000 person-years in hemophilia is increased compared with the age-adjusted mortality rates in developed countries (0.22 per 1000 person-years) and globally (0.53 per 1000 person-years).⁴⁰ Because mortality risk is associated with ICH type, different distributions of ICH types among studies complicate direct comparisons of ICH mortality rates between cohorts. In addition, it needs to be emphasized that our lifetime ICH estimates act as cumulative lifetime risks on a population level rather than risks applicable to an individual of a specific age. Although it is well known that ICH risk increases with advancing age in hemophilia and in the general population,³⁷ this ICH risk seems to follow an U-shaped curve over lifetime in hemophilia. Previous studies observed peak incidences in neonates, young children aged 0 to 4 years, and in older patients from age 40 to 50 years onward.^{14,19,22} Only 3 studies provided age-stratified ICH rates in our review, which hampered a robust assessment for particular groups of interest, such as elderly patients and young children. The scarcity of evidence on age-specific ICH incidences highlights the need for age stratification in future studies.

Determinants of ICH

Several determinants have been described to increase ICH risk in populations with hemophilia, including age, severe hemophilia, HIV infection, inhibitors, prior ICH, on demand therapy, and African American ethnicity.^{3,21,22,41} We did not find any clear difference in ICH rates between hemophilia A and B, which is in line with previous reports.^{14,21,22} The influence of potential determinants of ICH risk was beyond the scope of the current study and warrants more detailed evaluation in future reviews. To gain insight into the characteristics of ICH in this population, we investigated the occurrence of spontaneous ICH and locations of intracranial bleeds. We observed that spontaneous hemorrhages were relatively common, with pooled proportions of 0.58 for lifetime ICH and 0.35 for ICH in children and young adults with hemophilia. However, trivial head trauma without clear impact may easily lead to misclassification as spontaneous hemorrhage. Especially for subdural hematomas, the majority of bleeds are preceded by trauma and true spontaneous bleeds seem to be rare.^{42,43} In neonates, we found a higher percentage of ICH events after assisted vaginal delivery, which is a well-known risk factor for intracranial bleeds.^{7,31} It has yet to be determined how improved care and life expectancy of

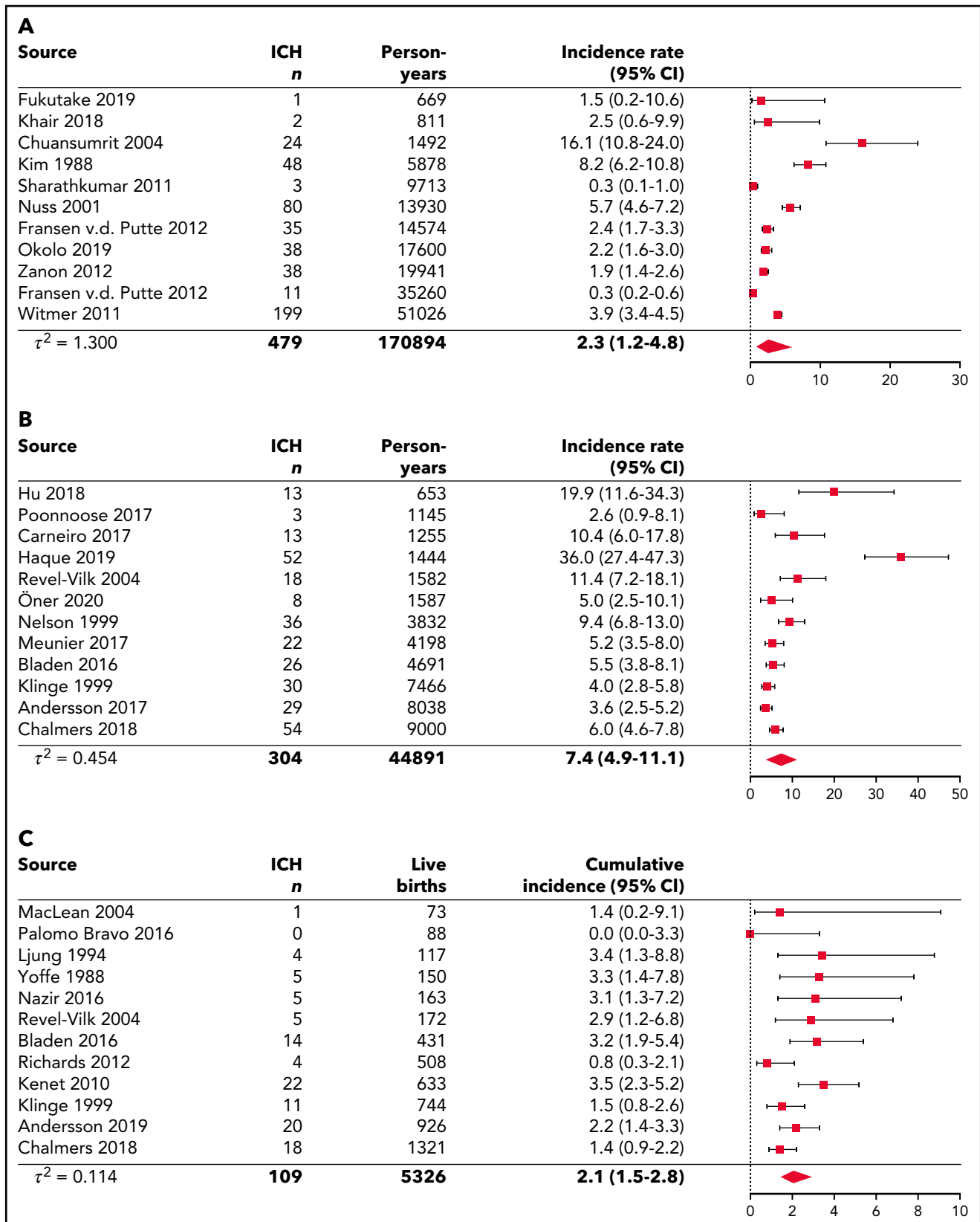


Figure 2. Pooled analyses of single-event ICH incidence for lifetime, children and young adults younger than age 25 years, and neonates. The diamond represents the pooled estimate. (A) Pooled single-event ICH incidence rates per 1000 person-years for lifetime cohorts. The results from the prospective follow-up from Zanon et al (2012)¹⁹ were used in this analysis instead of the results from retrospective and prospective follow-up. (B) Pooled single-event ICH incidence rates per 1000 person-years for children and young adults younger than 25 years of age. The study by Traivaree et al (2007)²³ was excluded from the analysis because of overlap in the catchment area and population with the study by Revel-Vilk et al (2004)¹⁶, which had a longer follow-up period. The study by Kulkarni et al (2017)²⁵ was excluded from the analysis because it concerned a specific cohort of infants <2 years of age. The studies by Andersson et al (2017)³, Hu et al (2018),²³ and Poonnoose et al (2017)⁶⁹ did not include neonatal ICH. (C) Pooled single-event ICH cumulative incidence per 100 live births for neonates.

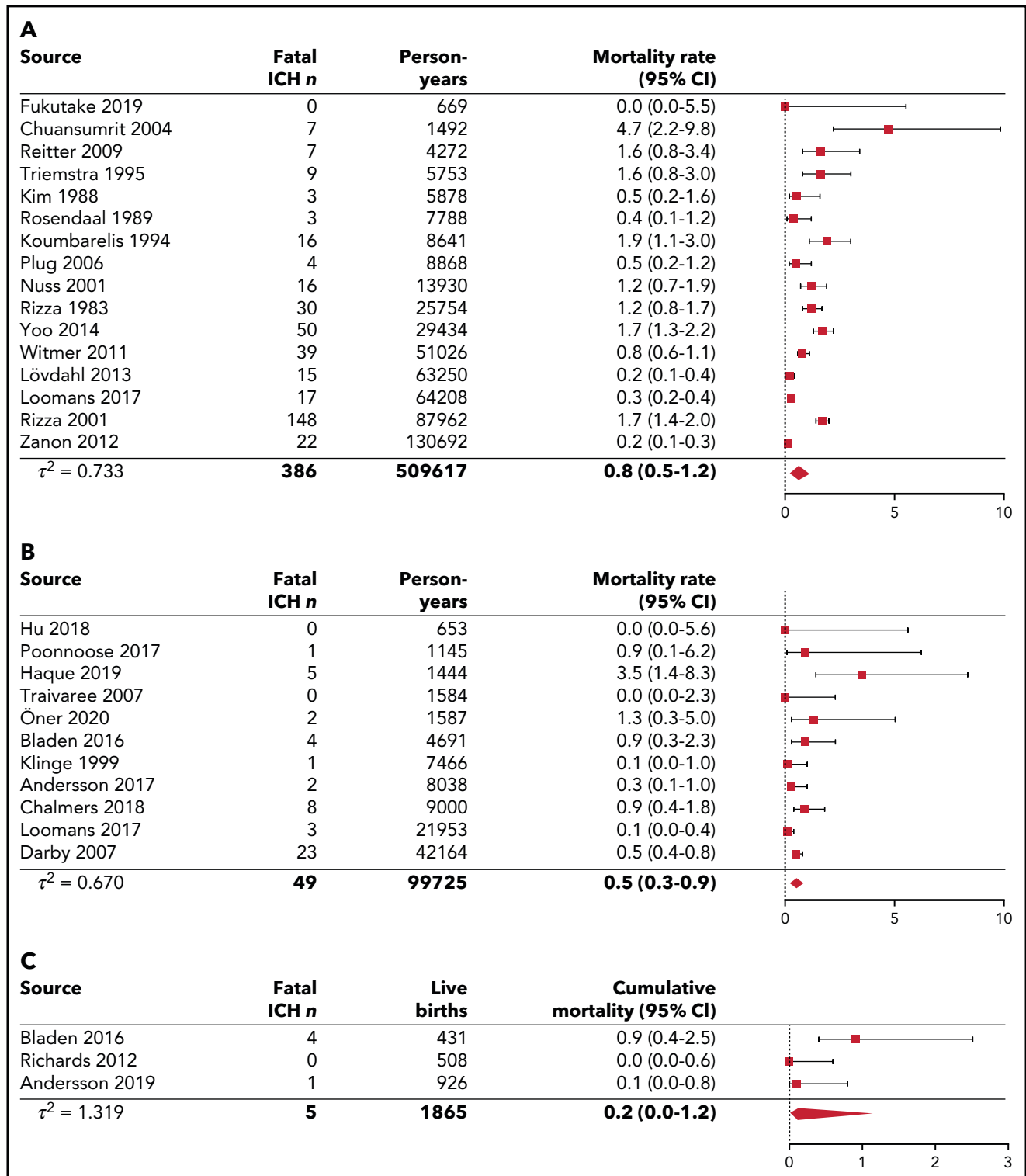


Figure 3. Pooled analyses of ICH mortality for lifetime, children and young adults younger than 25 years, and neonates. The diamond represents the pooled estimate. (A) Pooled ICH mortality rates per 1000 person-years for lifetime cohorts. The study of Fransen van de Putte (2012)¹⁸ was excluded from the analysis because of overlap in the catchment area and population with the studies from Rosendaal et al (1989),⁴⁴ Triemstra et al (1995),⁴⁶ and Plug et al (2006).⁴⁵ The study by Darby et al (2007)¹⁴ (HIV⁻) was excluded from the analysis because of overlap in the catchment area and population with the studies by Rizza and Spooner (1983)⁶¹ and Rizza et al (2001)⁶² (including HIV⁺ and HIV⁻ patients). The results from the complete follow-up period (retrospective and prospective follow-up) from Zanon et al (2012)¹⁹ were used in this analysis because fatal events were not described for the prospective follow-up period only. (B) Pooled ICH mortality rates per 1000 person-years for children and young adults younger than 25 years. The studies by Andersson et al (2017),³ Traivaree et al (2007),²³ Hu et al (2018),²³ and Poonnoose et al (2017)⁶⁹ did not include neonatal ICH. (C) Pooled ICH cumulative mortality per 100 live births for neonates.

Table 3. Locations of ICH

	Lifetime (2 studies) ^{19,21}	Children & young adults (5 studies) ^{15,23-25,68}	Neonates (4 studies) ^{27-29,74}
Reported bleeds, total (%)	200	148	36
Intraparenchymal	82 (41)	33 (22)	9 (25)
Subdural	60 (30)	50 (34)	21 (58)
Subarachnoid	17 (9)	10 (7)	1 (3)
Epidural	11 (6)	13 (9)	1 (3)
Intraventricular	12 (6)*	12 (8)	2 (6)
Unknown	18 (9)	9 (6)	0 (0)
Multiple sites	0 (0)	21 (14)	2 (6)

*Intraventricular bleeds were not reported by Nuss et al.²¹

patients with hemophilia will influence the incidence of ICH in the coming decades. Better care and fewer HIV infections may reduce ICH risk, whereas, on the other hand, age-related comorbidities provoking ICH may become more common. We included 3 consecutive cohort studies in The Netherlands in our review, which reported ICH mortality rates of 0.4, 1.6, and 0.5 cases per 1000 person-years in the periods from 1973 to 1986, 1986 to 1992, and 1992 to 2001, respectively.⁴⁴⁻⁴⁶ However, the most recent study from this group reported an increase in the ICH mortality rate to 1.3 cases per 1000 person-years in the period from 2001 to 2018.⁴⁷ It is uncertain to what extent comorbidities may have contributed to this risk,

and it highlights the need for further research into (preventable) determinants to mitigate the occurrence of intracranial bleeding in hemophilia.

Clinical implications

Our findings suggest that adequate follow-up and monitoring of patients are warranted among all ages, especially in the presence of risk factors. Prophylaxis seems to halve ICH risk in children and adults with severe hemophilia,^{3,22} which supports existing recommendations encouraging early initiation of prophylactic treatment.⁴⁸ Future studies are required to evaluate to what extent novel nonreplacement and gene therapies reduce ICH risk. In

Table 4. Overview of pooled analyses of ICH incidence and mortality

	Lifetime	Children and young adults		Neonates*
		All studies	Studies without neonatal ICH	
Pooled ICH single-event incidence rate per 1000 person-years (95% CI)				
All included studies	2.3 (1.2-4.8)	7.4 (4.9-11.1)	4.5 (2.7-7.5)	2.1 (1.5-2.8)
Sensitivity analysis: only studies with reported person-years	3.2 (2.1-4.7)	9.4 (4.3-20.6)	5.9 (3.0-11.3)	NA
Sensitivity analysis: only studies that met ≥80% of the quality items	3.2 (2.1-4.9)	5.0 (3.8-6.4)	3.5 (2.8-4.4)	1.7 (1.1-2.7)
Pooled ICH mortality rate per 1000 person-years (95% CI)				
All included studies	0.8 (0.5-1.2)	0.5 (0.3-0.9)	0.2 (0.1-0.6)	0.2 (0.0-1.2)
Sensitivity analysis: only studies with reported person-years	0.8 (0.4-1.3)	0.4 (0.2-1.1)	0.2 (0.1-0.8)	NA
Sensitivity analysis: only studies that met ≥ 80% of the quality items	0.6 (0.4-1.1)	0.6 (0.4-1.1)	0.2 (0.0-0.6)	0.2 (0.0-1.2)

All forest plots of the presented pooled data can be found in supplemental material.

NA, not applicable for studies on the neonatal period, as all included studies on neonates report exact numbers of live births.

*Cumulative incidence and mortality presented per 100 live births (95% CI) for pooled analyses of studies on neonates.

particular, there is an urgent need to investigate the benefits of novel therapies in young children. Furthermore, research should focus on the role of established ICH risk factors, such as hypertension, and the concomitant use of antithrombotic agents,^{49,50} which may become increasingly prevalent in the ageing hemophilia population as comorbidities increase. In light of the observed higher prevalence of hypertension in patients with hemophilia compared with the general population and the associated risk of bleeding, the recently published World Federation of Hemophilia guidelines recommend regular hypertension screening in all patients with hemophilia.⁵¹ The potential effect of this pragmatic approach has yet to be established. Other practical suggestions may include adequate counseling of patients with hemophilia and their families on ICH risks and symptoms. In case of a suspected brain hemorrhage or head trauma, clinical management should take place at a hemophilia treatment facility. In neonates, our data support the need for an active pedigree approach for genetic testing and comprehensive counseling of pregnant carriers. When an affected infant is expected, invasive procedures should be avoided, as recommended.⁵² However, it should be noted that ~50% of affected neonates are born without a known family history, hampering any precautionary perinatal measures. We reported ICH incidences of 0.062% in neonates in the general population and 2.1% in neonates with hemophilia. Because hemophilia occurs in ~1 per 5000 live male births,⁵³ it can be estimated that 1 in every 150 male neonates presenting with ICH is affected with hemophilia. This encourages early diagnostic work-up for bleeding disorders in newborns with unexplained ICH.

Strengths and limitations

To our knowledge, this is the first systematic review of lifetime ICH incidence and mortality rates in hemophilia. The strengths of our review are the quality assessments and calculation and estimation of rates taking time under observation into account, which made inclusion of many studies possible. Furthermore, because standard meta-analysis methods may give biased results in the event of sparse or no event data, we applied random-effects generalized linear mixed models.¹² Our study also had several limitations. Accurate capture of the true frequency of ICH is challenged by considerable clinical heterogeneity. Included studies were heterogeneous in terms of setting, time period, population characteristics, and types of ICH, limiting precision and generalizability of the pooled estimates. Most studies used a retrospective design, increasing the chance of survivor bias. Thus, undiagnosed neonates who died from ICH may have been missed. In addition, some studies evaluated ICH in cohorts that consisted of living patients only; as a consequence, they lacked fatal ICH events. Consequently, incidence is likely to be underestimated. Future reviews are needed to robustly assess how established risk factors contribute to ICH occurrence in this population. Other limitations arise from limited data on person-years. For 19 studies, we estimated the number of person-years, because it was not reported in the original article; this might have differed from the actual number of person-years. However, the sensitivity analyses that included studies with exact person-years demonstrated similar ICH rates for most populations. In spite of these limitations, this study is a systematic compilation of available evidence on ICH incidence and mortality rates in hemophilia.

Conclusions

In this systematic review and meta-analysis, we found high ICH incidence and mortality rates in patients with hemophilia. Our findings suggest that ICH is still an important problem in hemophilia requiring adequate counseling of patients of all ages.

Acknowledgments

The authors thank René Spijker (Amsterdam University Medical Center [Amsterdam UMC], Amsterdam, The Netherlands) for expert support in designing the literature search, and Mike Soucie Division of Blood Disorders, Centers for Disease Control and Prevention, Atlanta, GA, Evelien Mauser-Bunschoten (Van Creveldkliniek, University Medical Center Utrecht, Utrecht, The Netherlands), and Amanda Okolo (Indiana Hemophilia and Thrombosis Center, Indianapolis, IN) for providing clarifying details for their studies.

This work was supported by a grant from Sobi.

Authorship

Contribution: A.F.-Z., S.C.G., M.C., J.G.V.d.B., and K.F. designed the research; Q.H., X.F., and S.K.K. contributed data; A.-F.Z., J.S.J., C.V., and S.C.G. collected and interpreted data; A.F.-Z. analyzed data; A.F.-Z., S.C.G., and K.F. wrote the manuscript; and all authors approved the final version of the manuscript.

Conflict-of-interest disclosure: S.C.G. has received an unrestricted research grant from Sobi. M.C. has received financial research support from Bayer, CSL Behring, Daiichi Sankyo, Portola/Alexion, Roche, Sanquin Blood Supply Foundation, and uniQure and consultancy or lecture fees from Bayer, CSL Behring, MEDCON International, MEDtalks, Novo Nordisk, Pfizer, and Sobi. J.G.V.d.B. has received unrestricted institutional research grants from Novo Nordisk and her institution received consultancy/lecturing fees from Bayer. K.F. has received unrestricted institutional research grants from Sobi, Pfizer, CSL Behring, and Novo Nordisk and her institution has consultancy fees from Grifols, Takeda, Novo Nordisk, and Roche. The remaining authors declare no competing financial interests.

ORCID profiles: A.F.-Z., 0000-0002-8848-1229; S.C.G., 0000-0002-1957-4122; M.C., 0000-0001-6891-9062; J.G.V.d.B., 0000-0001-9095-2475; K.F., 0000-0003-0904-4360.

Correspondence: Karin Fijnvandraat, Department of Pediatric Hematology, Amsterdam UMC, Meibergdreef 9, 1105 AZ Amsterdam, The Netherlands; e-mail: c.j.fijnvandraat@amsterdamumc.nl.

Footnotes

Submitted 25 March 2021; Accepted 26 July 2021; prepublished online on *Blood* First Edition 19 August 2021; DOI 10.1182/blood.2021011849.

All data analyzed for this study can be derived from the tables and supplemental material.

The online version of this article contains a data supplement.

There is a *Blood* Commentary on this article in this issue.

The publication costs of this article were defrayed in part by page charge payment. Therefore, and solely to indicate this fact, this article is hereby marked "advertisement" in accordance with 18 USC section 1734.

REFERENCES

- White GC II, Rosendaal F, Aledort LM, Lusher JM, Rothschild C, Ingerslev J; Factor VIII and Factor IX Subcommittee. Definitions in hemophilia. Recommendation of the scientific subcommittee on factor VIII and factor IX of the scientific and standardization committee of the International Society on Thrombosis and Haemostasis. *Thromb Haemost.* 2001;85(3):560.
- de Tezanos Pinto M, Fernandez J, Perez Bianco PR. Update of 156 episodes of central nervous system bleeding in hemophiliacs. *Haemostasis.* 1992; 22(5):259-267.
- Andersson NG, Auerswald G, Barnes C, et al. Intracranial haemorrhage in children and adolescents with severe haemophilia A or B - the impact of prophylactic treatment. *Br J Haematol.* 2017;179(2):298-307.
- Andersson NG, Wu R, Carcao M, et al; ICH study group. Long-term follow-up of neonatal intracranial haemorrhage in children with severe haemophilia. *Br J Haematol.* 2020; 190(2):e101-e104.
- Ljung RC. Intracranial haemorrhage in haemophilia A and B. *Br J Haematol.* 2008; 140(4):378-384.
- Chalmers EA, Alamelu J, Collins PW, et al; Paediatric & Rare Disorders Working Parties of the UK Haemophilia Doctors Organization. Intracranial haemorrhage in children with inherited bleeding disorders in the UK 2003-2015: a national cohort study. *Haemophilia.* 2018;24(4):641-647.
- Davies J, Kadir RA. Mode of delivery and cranial bleeding in newborns with haemophilia: a systematic review and meta-analysis of the literature. *Haemophilia.* 2016; 22(1):32-38.
- Loomans JI, Eckhardt CL, Reitter-Pfoertner SE, et al. Mortality caused by intracranial bleeding in non-severe hemophilia A patients. *J Thromb Haemost.* 2017; 15(6):1115-1122.
- Moher D, Liberati A, Tetzlaff J, Altman DG; PRISMA Group. Preferred reporting items for systematic reviews and meta-analyses: the PRISMA statement. *PLoS Med.* 2009; 6(7):e1000097.
- Munn Z, Moola S, Lisy K, Riitano D, Tufanaru C. Methodological guidance for systematic reviews of observational epidemiological studies reporting prevalence and cumulative incidence data. *Int J Evid-Based Healthc.* 2015;13(3):147-153.
- Munn Z, Moola S, Lisy K, Riitano D, Tufanaru C. Chapter 5: systematic reviews of prevalence and incidence. In: Aromataris E, Munn Z, eds. *Joanna Briggs Institute Reviewer's Manual.* Adelaide, Australia: The Joanna Briggs Institute; 2017:177-217.
- Stijnen T, Hamza TH, Ozdemir P. Random effects meta-analysis of event outcome in the framework of the generalized linear mixed model with applications in sparse data. *Stat Med.* 2010;29(29):3046-3067.
- Rothman KJ, Boice JD Jr. *Epidemiologic Analysis With a Programmable Calculator.* Boston, MA: Epidemiology Resources Inc.; 1979.
- Darby SC, Kan SW, Spooner RJ, et al. Mortality rates, life expectancy, and causes of death in people with hemophilia A or B in the United Kingdom who were not infected with HIV. *Blood.* 2007;110(3):815-825.
- Klinge J, Auberger K, Auerswald G, Brackmann HH, Mauz-Körholz C, Kreuz W. Prevalence and outcome of intracranial haemorrhage in haemophiliacs—a survey of the paediatric group of the German Society of Thrombosis and Haemostasis (GTH). *Eur J Pediatr.* 1999;158(suppl 3):S162-S165.
- Revel-Vilk S, Golomb MR, Achonu C, et al. Effect of intracranial bleeds on the health and quality of life of boys with hemophilia. *J Pediatr.* 2004;144(4):490-495.
- Bladen M, Main E, Khair K, Hubert N, Koutoumanou E, Liesner R. The incidence, risk and functional outcomes of intracranial haemorrhage in children with inherited bleeding disorders at one haemophilia center. *Haemophilia.* 2016;22(4):556-563.
- Fransen van de Putte DE, Fischer K, Pulles AE, et al. Non-fatal cardiovascular disease, malignancies, and other co-morbidity in adult haemophilia patients. *Thromb Res.* 2012;130(2):157-162.
- Zanon E, Iorio A, Rocino A, et al; Italian Association of Hemophilia Centers. Intracranial haemorrhage in the Italian population of haemophilia patients with and without inhibitors. *Haemophilia.* 2012; 18(1):39-45.
- Chuansumrit A, Krasaesub S, Angchaisuksiri P, Hathirat P, Isarangkura P. Survival analysis of patients with haemophilia at the International Haemophilia Training Centre, Bangkok, Thailand. *Haemophilia.* 2004; 10(5):542-549.
- Nuss R, Soucie JM, Evatt B; Hemophilia Surveillance System Project Investigators. Changes in the occurrence of and risk factors for hemophilia-associated intracranial hemorrhage. *Am J Hematol.* 2001;68(1):37-42.
- Witmer C, Presley R, Kulkarni R, Soucie JM, Manno CS, Raffini L. Associations between intracranial haemorrhage and prescribed prophylaxis in a large cohort of haemophilia patients in the United States. *Br J Haematol.* 2011;152(2):211-216.
- Traivaree C, Blanchette V, Armstrong D, Floros G, Stain AM, Carcao MD. Intracranial bleeding in haemophilia beyond the neonatal period—the role of CT imaging in suspected intracranial bleeding. *Haemophilia.* 2007;13(5):552-559.
- Hu Q, Zhang A, Liu AG, Wang SM, Wang YQ, Zhang LQ. A retrospective analysis of intracranial hemorrhage in children with hemophilia A. *Curr Med Sci.* 2018; 38(5):875-879.
- Kulkarni R, Presley RJ, Lusher JM, et al. Complications of haemophilia in babies (first two years of life): a report from the Centers for Disease Control and Prevention Universal Data Collection System. *Haemophilia.* 2017; 23(2):207-214.
- Ljung R, Lindgren AC, Petrini P, Tengborn L. Normal vaginal delivery is to be recommended for haemophilia carrier gravidae. *Acta Paediatr.* 1994;83(6):609-611.
- Kenet G, Chan AK, Soucie JM, Kulkarni R. Bleeding disorders in neonates. *Haemophilia.* 2010;16(suppl 5):168-175.
- Richards M, Lavigne Lissalde G, Combesure C, et al; European Haemophilia Treatment and Standardization Board. Neonatal bleeding in haemophilia: a European cohort study. *Br J Haematol.* 2012;156(3):374-382.
- Nazir HF, Al Lawati T, Beshlawi I, et al. Mode of delivery and risk of intracranial haemorrhage in newborns with severe haemophilia A: a multicentre study in Gulf region. *Haemophilia.* 2016;22(3):e134-e138.
- Andersson NG, Chalmers EA, Kenet G, Ljung R, Mäkipernaa A, Chambost H; PedNet Haemophilia Research Foundation. Mode of delivery in hemophilia: vaginal delivery and Cesarean section carry similar risks for intracranial hemorrhages and other major bleeds. *Haematologica.* 2019; 104(10):2100-2106.
- Towner D, Castro MA, Eby-Wilkens E, Gilbert WM. Effect of mode of delivery in nulliparous women on neonatal intracranial injury. *N Engl J Med.* 1999; 341(23):1709-1714.
- Witmer CM. Low mortality from intracranial haemorrhage in paediatric patients with haemophilia. *Haemophilia.* 2015; 21(5):e359-e363.
- Jordan LC, Hillis AE. Hemorrhagic stroke in children. *Pediatr Neurol.* 2007;36(2):73-80.
- Fullerton HJ, Wu YW, Zhao S, Johnston SC. Risk of stroke in children: ethnic and gender disparities. *Neurology.* 2003;61(2):189-194.
- Hobbs C, Childs AM, Wynne J, Livingston J, Seal A. Subdural haematoma and effusion in infancy: an epidemiological study. *Arch Dis Child.* 2005;90(9):952-955.
- Krishnamurthi RV, deVeber G, Feigin VL, et al; GBD 2013 Stroke Panel Experts Group. Stroke prevalence, mortality and disability-adjusted life years in children and youth aged 0-19 Years: data from the Global and Regional Burden of Stroke 2013. *Neuro-epidemiology.* 2015;45(3):177-189.
- van Asch CJ, Luitse MJ, Rinkel GJ, van der Tweel I, Algra A, Klijn CJ. Incidence, case fatality, and functional outcome of intracerebral haemorrhage over time, according to age, sex, and ethnic origin: a systematic review and meta-analysis. *Lancet Neurol.* 2010;9(2):167-176.
- de Rooij NK, Linn FH, van der Plas JA, Algra A, Rinkel GJ. Incidence of subarachnoid haemorrhage: a systematic review with emphasis on region, age, gender and time trends. *J Neurol Neurosurg Psychiatry.* 2007; 78(12):1365-1372.
- Balser D, Farooq S, Mehmood T, Reyes M, Samadani U. Actual and projected incidence rates for chronic subdural hematomas in United States Veterans Administration and

- civilian populations. *J Neurosurg.* 2015; 123(5):1209-1215.
40. Feigin VL, Krishnamurthi RV, Parmar P, et al; GBD 2013 Stroke Panel Experts Group. Update on the global burden of ischemic and hemorrhagic stroke in 1990-2013: The GBD 2013 Study. *Neuroepidemiology.* 2015; 45(3):161-176.
 41. Koumbarelis E, Rosendaal FR, Gialeraki A, et al. Epidemiology of haemophilia in Greece: an overview. *Thromb Haemost.* 1994;72(6):808-813.
 42. Morris NA, Merkler AE, Parker WE, et al. Adverse outcomes after initial non-surgical management of subdural hematoma: a population-based study. *Neurocrit Care.* 2016;24(2):226-232.
 43. Akioka N, Fukuda O, Takaba M, Kameda H, Saito T, Endo S. Clinical investigation of acute spontaneous subdural hematoma cases. *J Stroke Cerebrovasc Dis.* 2007; 16(3):109-113.
 44. Rosendaal FR, Vrekeamp I, Smit C, et al. Mortality and causes of death in Dutch haemophiliacs, 1973-86. *Br J Haematol.* 1989;71(1):71-76.
 45. Plug I, Van Der Bom JG, Peters M, et al. Mortality and causes of death in patients with hemophilia, 1992-2001: a prospective cohort study. *J Thromb Haemost.* 2006; 4(3):510-516.
 46. Triemstra M, Rosendaal FR, Smit C, Van der Ploeg HM, Briët E. Mortality in patients with hemophilia. Changes in a Dutch population from 1986 to 1992 and 1973 to 1986. *Ann Intern Med.* 1995;123(11):823-827.
 47. Hassan S, Monahan RC, Mauser-Bunschoten EP, et al. Mortality, life expectancy and causes of death of persons with hemophilia in the Netherlands 2001-2018. *J Thromb Haemost.* 2021;19(3):645-653.
 48. Oldenburg J. Optimal treatment strategies for hemophilia: achievements and limitations of current prophylactic regimens. *Blood.* 2015;125(13):2038-2044.
 49. Rincon F, Mayer SA. Clinical review: critical care management of spontaneous intracerebral hemorrhage. *Crit Care.* 2008; 12(6):237.
 50. Lovelock CE, Molyneux AJ, Rothwell PM; Oxford Vascular Study. Change in incidence and aetiology of intracerebral haemorrhage in Oxfordshire, UK, between 1981 and 2006: a population-based study. *Lancet Neurol.* 2007;6(6):487-493.
 51. Srivastava A, Santagostino E, Dougall A, et al. WFH Guidelines for the Management of Hemophilia, 3rd edition. *Haemophilia.* 2020;26(suppl 6):1-158.
 52. Lee CA, Chi C, Pavord SR, et al; UK Haemophilia Centre Doctors' Organization. The obstetric and gynaecological management of women with inherited bleeding disorders—review with guidelines produced by a taskforce of UK Haemophilia Centre Doctors' Organization. *Haemophilia.* 2006;12(4):301-336.
 53. Soucie JM, Evatt B, Jackson D; The Hemophilia Surveillance System Project Investigators. Occurrence of hemophilia in the United States. *Am J Hematol.* 1998; 59(4):288-294.
 54. Khair K, Mazzucconi MG, Parra R, et al. Pattern of bleeding in a large prospective cohort of haemophilia A patients: a three-year follow-up of the AHEAD (Advate in Haemophilia A outcome Database) study. *Haemophilia.* 2018;24(1):85-96.
 55. Yoo KY, Kim SK, Kwon SS, et al. Life expectancy of Korean haemophiliacs, 1991-2012. *Haemophilia.* 2014;20(4):e356-e358.
 56. Shih MY, Wang JD, Yin JD, Tsan YT, Chan WC. Differences in major bleeding events between patients with severe hemophilia A and hemophilia B: a nationwide, population-based cohort study. *Clin Appl Thromb Hemost.* 2019;25:1076029619888023.
 57. Fransen van de Putte DE, Fischer K, Makris M, et al. History of non-fatal cardiovascular disease in a cohort of Dutch and British patients with haemophilia. *Eur J Haematol.* 2012;89(4):336-339.
 58. Lövdahl S, Henriksson KM, Baghaei F, et al. Incidence, mortality rates and causes of deaths in haemophilia patients in Sweden. *Haemophilia.* 2013;19(3):362-369.
 59. Reitter S, Waldhoer T, Vutuc C, Lechner K, Pabinger I. Survival in a cohort of patients with haemophilia at the haemophilia care center in Vienna, Austria, from 1983 to 2006. *Haemophilia.* 2009;15(4):888-893.
 60. Sharathkumar AA, Soucie JM, Trawinski B, Greist A, Shapiro AD. Prevalence and risk factors of cardiovascular disease (CVD) events among patients with haemophilia: experience of a single haemophilia treatment centre in the United States (US). *Haemophilia.* 2011;17(4):597-604.
 61. Rizza CR, Spooner RJ. Treatment of haemophilia and related disorders in Britain and Northern Ireland during 1976-80: report on behalf of the directors of haemophilia centres in the United Kingdom. *Br Med J (Clin Res Ed).* 1983;286(6369):929-933.
 62. Rizza CR, Spooner RJ, Giangrande PL; UK Haemophilia Centre Doctors' Organization (UKCDO). Treatment of haemophilia in the United Kingdom 1981-1996. *Haemophilia.* 2001;7(4):349-359.
 63. Kim KY, Yang CH, Cho MJ, Lee M. Comprehensive clinical and statistical analysis of hemophilia in Korea. *J Korean Med Sci.* 1988;3(3):107-115.
 64. Okolo AI, Soucie JM, Grosse SD, et al. Population-based surveillance of haemophilia and patient outcomes in Indiana using multiple data sources. *Haemophilia.* 2019;25(3):456-462.
 65. Fukutake K, Taki M, Matsushita T, et al. Inhibitor development, safety and efficacy of Advate® among previously treated patients with hemophilia A in a postmarketing surveillance in Japan. *Int J Hematol.* 2019; 109(3):336-345.
 66. Haque Q, Abuduaini Y, Li H, Wen J, Wu X, Feng X. Intracranial hemorrhage in children with inherited bleeding disorders: a single center study in China. *J Pediatr Hematol Oncol.* 2019;41(3):207-209.
 67. Carneiro JDA, Blanchette V, Ozelo MC, et al; São Paulo-Toronto Hemophilia Study Group. Comparing the burden of illness of haemophilia between resource-constrained and unconstrained countries: the São Paulo-Toronto Hemophilia Study. *Haemophilia.* 2017;23(5):682-688.
 68. Nelson MD Jr, Maeder MA, Usner D, et al. Prevalence and incidence of intracranial haemorrhage in a population of children with haemophilia. The Hemophilia Growth and Development Study. *Haemophilia.* 1999;5(5):306-312.
 69. Poonnoose P, Carneiro JDA, Cruickshank AL, et al; MUSFIH Study group. Episodic replacement of clotting factor concentrates does not prevent bleeding or musculoskeletal damage - the MUSFIH study. *Haemophilia.* 2017;23(4):538-546.
 70. Meunier S, d'iron R, Chambost H, Dolimier E, Guillet B; ORTHem 15-25 Study Group. Choice of factor VIII/IX regimen in adolescents and young adults with severe or moderately severe haemophilia. A French national observational study (ORTHem 15-25). *Thromb Res.* 2017;151:17-22.
 71. Öner N, Gürsel T, Kaya Z, et al. Inherited coagulation disorders in Turkish children: a retrospective, single-center cohort study. *Transfus Apheresis Sci.* 2020;59(3):102728.
 72. MacLean PE, Fijnvandraat K, Beijleveld M, Peters M. The impact of unaware carriership on the clinical presentation of haemophilia. *Haemophilia.* 2004;10(5):560-564.
 73. Palomo Bravo Á, Núñez R, Gutiérrez Pimentel MJ, Nieto MD, Cos C, Pérez R. Haemophilia neonates: mode of delivery and perinatal complications. *Haemophilia.* 2016;22(3):e225-e228.
 74. Yoffe G, Buchanan GR. Intracranial hemorrhage in newborn and young infants with hemophilia. *J Pediatr.* 1988; 113(2):333-336.