



**Universiteit
Leiden**
The Netherlands

Breach of autoreactive B cell tolerance by post-translationally modified proteins

Dekkers, J.S.; Verheul, M.K.; Stoop, J.N.; Liu, B.S.; Ioan-Facsinay, A.; Veelen, P.A. van; ... ; Toes, R.E.M.

Citation

Dekkers, J. S., Verheul, M. K., Stoop, J. N., Liu, B. S., Ioan-Facsinay, A., Veelen, P. A. van, ... Toes, R. E. M. (2017). Breach of autoreactive B cell tolerance by post-translationally modified proteins. *Annals Of The Rheumatic Diseases*, 76(8), 1449-1457.
doi:10.1136/annrheumdis-2016-210772

Version: Not Applicable (or Unknown)

License: [Licensed under Article 25fa Copyright Act/Law \(Amendment Taverne\)](#)

Downloaded from: <https://hdl.handle.net/1887/114623>

Note: To cite this publication please use the final published version (if applicable).

EXTENDED REPORT

Breach of autoreactive B cell tolerance by post-translationally modified proteins

Jacqueline S Dekkers,¹ Marije K Verheul,¹ Jeroen N Stoop,¹ Bisheng Liu,¹ Andreea Ioan-Facsinay,¹ Peter A van Veelen,² Arnoud H de Ru,² George M C Janssen,² Martin Hegen,³ Steve Rapecki,⁴ Tom W J Huizinga,¹ Leendert A Trouw,¹ René E M Toes¹

► Additional material is published online only. To view please visit the journal online (<http://dx.doi.org/10.1136/annrheumdis-2016-210772>).

¹Department of Rheumatology, Leiden University Medical Center, Leiden, The Netherlands

²Center for Proteomics and Metabolomics, Leiden University Medical Center, Leiden, The Netherlands

³Departments of Inflammation and Immunology, Pfizer Research, Cambridge, Massachusetts, USA

⁴UCB Pharma, Slough, UK

Correspondence to

Jacqueline S Dekkers, Department of Rheumatology, Leiden University Medical Center, Albinusdreef 2, 2333 ZA, Leiden 2300 RC, The Netherlands; j.s.dekkers@lumc.nl

JSD and MKV contributed equally.

Received 4 November 2016
Revised 10 February 2017
Accepted 23 March 2017
Published Online First
24 April 2017

ABSTRACT

Objectives Over 50% of patients with rheumatoid arthritis (RA) harbour a variety of anti-modified protein antibodies (AMPA) against different post-translationally modified (PTM) proteins, including anti-carbamylated protein (anti-CarP) antibodies. At present, it is unknown how AMPA are generated and how autoreactive B cell responses against PTM proteins are induced. Here we studied whether PTM foreign antigens can breach B cell tolerance towards PTM self-proteins.

Methods Serum reactivity towards five carbamylated proteins was determined for 160 patients with RA and 40 healthy individuals. Antibody cross-reactivity was studied by inhibition experiments. Mass spectrometry was performed to identify carbamylated self-proteins in human rheumatic joint tissue. Mice were immunised with carbamylated or non-modified (auto)antigens and analysed for autoantibody responses.

Results We show that anti-CarP antibodies in RA are highly cross-reactive towards multiple carbamylated proteins, including modified self-proteins and modified non-self-proteins. Studies in mice show that anti-CarP antibody responses recognising carbamylated self-proteins are induced by immunisation with carbamylated self-proteins and by immunisation with carbamylated proteins of non-self-origin. Similar to the data observed with sera from patients with RA, the murine anti-CarP antibody response was, both at the monoclonal level and the polyclonal level, highly cross-reactive towards multiple carbamylated proteins, including carbamylated self-proteins.

Conclusions Self-reactive AMPA responses can be induced by exposure to foreign proteins containing PTM. These data show how autoreactive B cell responses against PTM self-proteins can be induced by exposure to PTM foreign proteins and provide new insights on the breach of autoreactive B cell tolerance.

INTRODUCTION

Autoimmunity in patients with rheumatoid arthritis (RA) is characterised by a spectrum of anti-modified protein antibodies (AMPA) directed against post-translationally modified (PTM) proteins. The best-known AMPA in RA are autoantibodies directed against citrullinated proteins. Anti-citrullinated protein antibodies (ACPA) target proteins that have undergone a post-translational modification of arginine into citrulline by an enzymatic process mediated by peptidylarginine deiminases (PAD).^{1 2} The identification of ACPA as specific

serological marker has had a major impact on the understanding of RA and disease prognosis as their presence predicts a more destructive disease process.^{3–7} Much less is known about the occurrence and aetiology of other AMPA responses in RA such as autoantibodies directed to malondialdehyde-acetaldehyde adducts, acetylated antigens and carbamylated proteins.^{8–11} Anti-carbamylated protein (anti-CarP) autoantibodies recognise carbamylated proteins containing a homocitrulline, a PTM structurally similar to citrulline.^{8 12} Like ACPA and rheumatoid factor, also anti-CarP antibodies can be detected in serum many years before RA manifestation,^{13–18} and similar to these autoantibodies, the presence of anti-CarP antibodies is predictive of increased radiological damage.¹³ In contrast to deimination (citrullination), carbamylation occurs through an enzyme-independent reaction in which a lysine is converted into a homocitrulline through a reaction with cyanate¹⁹ (figure 1A).

With the presence of various AMPA responses in RA, PTM proteins have been implicated in the breach of autoreactive B cell tolerance leading to the formation of these autoantibodies.^{20 21} As AMPA have undergone isotype switching and somatic hypermutation, it is often speculated that AMPA-producing B cells have received T cell help from autoreactive T cells recognising the same PTM self-proteins. So far, attempts to provide more insight into how autoreactive B cell responses against citrullinated proteins are induced have been hampered by the fact that ACPA do not occur in murine models of arthritis.²²

Interestingly, anti-CarP antibodies do occur in mice with collagen-induced arthritis (CIA).²³ The kinetics of anti-CarP antibodies in CIA mice display similarity to RA as these antibodies can be detected before disease onset. In addition, humoral responses to carbamylated proteins are only present in arthritis models that require active involvement of the adaptive immune system.²⁴ Given the observation that anti-CarP antibodies, in contrast to ACPA, do occur in both humans and mice, we here investigated for the first time how PTM (foreign) proteins could contribute to a breach of B cell tolerance.

Our findings show that autoreactive B cell responses against PTM proteins can be induced by exposure to PTM foreign proteins and provide new insights on the breach of autoreactive B cell tolerance by foreign proteins.



CrossMark

To cite: Dekkers JS, Verheul MK, Stoop JN, et al. *Ann Rheum Dis* 2017;**76**:1449–1457.

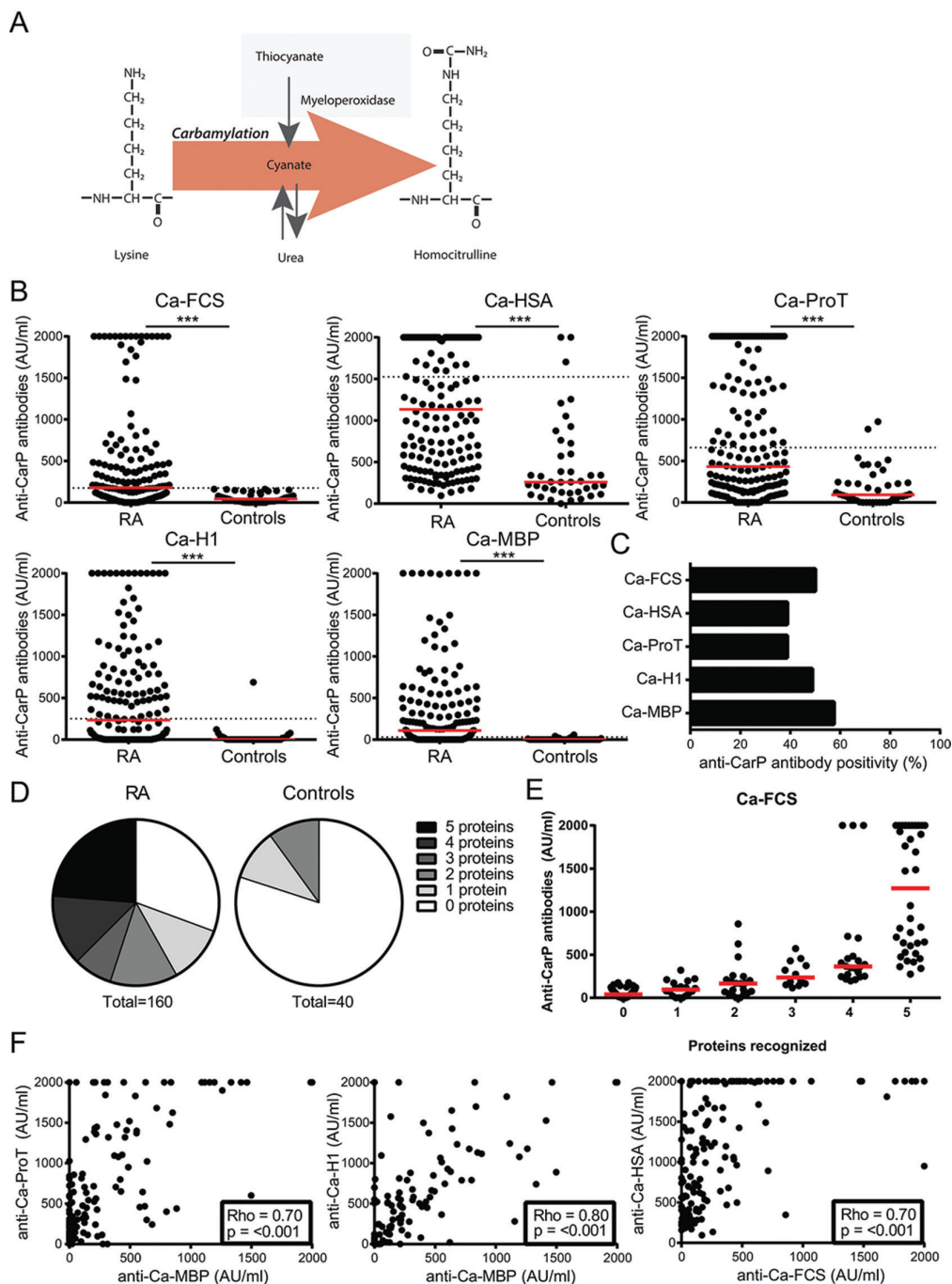


Figure 1 Characterisation of anti-CarP antibody reactivities in patients with RA. (A) During carbamylation, a lysine residue is converted into a homocitrulline residue through a chemical reaction with cyanate. Levels of cyanate are in equilibrium with urea and can be increased, for example, during kidney disease. Cyanate levels can also be elevated during inflammation by the action of myeloperoxidase. (B) Anti-CarP antibody reactivities against five carbamylated and non-modified counterparts were measured by ELISA in 160 patients with RA and 40 healthy controls. A standard serum pool was used to calculate the arbitrary units. The represented value was calculated by subtracting the non-modified antigen reactivity from the carbamylated antigen reactivity. The dotted line represents the cut-off while the continuous line represents the median. Statistical differences were determined by the Mann-Whitney U test (** $p < 0.001$). (C) Percentages of anti-CarP antibody positivity for all five antigens in patients with RA. (D) Fractions of patients that display antibody reactivity towards multiple carbamylated antigens are shown for patients with RA and controls. (E) Correlation between the amount of antigens recognised by individual serum samples and the anti-Ca-FCS antibody levels. The small continuous line represents the median. Reactivity towards Ca-FCS is shown as an example, Spearman rank test, $p < 0.001$ for all carbamylated antigens. (F) The correlation between two anti-CarP antibody reactivities is shown for different carbamylated antigens. The Spearman rank test was carried out to determine the degree of statistical correlation. anti-CarP, anti-carbamylated protein; AU/ml, arbitrary units per millilitre; Ca, carbamylated; FCS, fetal calf serum; H1, H1 histones; HSA, human serum albumin; MBP, myelin basic protein; ProT, prothrombin; RA, rheumatoid arthritis.

METHODS

Human serum samples

Serum samples from 160 patients with RA of the Leiden Early Arthritis Cohort²⁵ and 40 healthy controls were used to study anti-CarP antibody cross-reactivity. Patients with RA fulfilled the 1987 RA classification criteria. All subjects provided informed consent prior to inclusion and ethical permission was provided by the institutional review board.

Carbamylation and citrullination

Fetal calf serum (FCS, Bodinco), myelin basic protein (MBP, Sigma), human serum albumin (HSA, Sigma), H1 Histone (H1 Merck Millipore), prothrombin (ProT, provided by Professor Blom Malmö, Sweden), ovalbumin (OVA, Sigma-Aldrich) and mouse albumin (mAlb, EMD Millipore) were incubated with 1 M potassium cyanate (Sigma-Aldrich) during 12 hours at 37°C, followed by dialysis. Fibrinogen, mouse (Cell Sciences) and human (Sigma-Aldrich), was incubated with 0.5 M potassium cyanate during 7 days. For citrullination, 10 mg FCS or 2 mg fibrinogen in 1 mL containing 0.1 M Tris-HCl pH 7.6 and 0.15 M CaCl₂ was incubated with 40U PAD4 (Sigma-Aldrich) for 3 hours at 37°C. Protein carbamylation and citrullination was determined afterwards by in-house developed and standardised ELISAs confirmed by mass spectrometry (MS).

Antibody detection and inhibition assays

Human and mouse anti-CarP antibodies were detected as described previously^{8, 23} and are described in more detail in the online supplementary text. For inhibition assays, sera were preincubated for 1 hour with 0 or 0.2 mg/mL carbamylated or non-modified versions of one from five antigens before addition of serum samples to the ELISA plate.

Mass spectrometric analysis of joint tissue

RA joint tissue samples were obtained from knee-replacement surgery leftover material (Department of Orthopedic Surgery, LUMC). This procedure was approved by the local ethical committee. Sample preparation for mass spectrometric analysis and peptide identification is described in detail in the online supplementary text.

Mice and immunisations

Animal experiments were performed and conform with national guidelines following approval by the Local Ethical Committee for Animal Experimentation. DBA/1 mice were obtained from our breeding colony (originally Harlan) and C57BL/6 mice were purchased from Charles River (8–10 weeks old). For alum immunisations, mice received two intraperitoneal injections containing a 1:1 mixture of antigen (100 µg) and alhydrogel (Invivogen). Complete Freund's adjuvant (CFA) immunisations were given at the tail base, 100 µg antigen in CFA (Difco). Three weeks later, a subcutaneous boost was given, 100 µg antigen in CFA (incomplete Freund's adjuvant; Sigma-Aldrich). For immunisations in the absence of adjuvant, mice received two injections with 100 µg antigen diluted in phosphate buffered saline (PBS).

Production of monoclonal antibodies

Generation of anti-CarP monoclonal antibodies, variable region cloning and antibody production is described in detail in the online supplementary text.

Statistics

Prism7 (GraphPad) or IBM SPSS Statistics V.23 were used for statistical testing. Statistical differences in inhibition experiments were determined by the Wilcoxon signed-rank test. Differences in antibody levels between subjects and controls were determined by the Mann-Whitney U test. Differences in antibody positivity were determined by Pearson's χ^2 test. Spearman's rank test was performed to evaluate correlations.

RESULTS

Anti-CarP antibodies of patients with RA recognise multiple carbamylated antigens

To characterise the antigen recognition profile of human anti-CarP antibodies, we studied antibody reactivity against a set of five different carbamylated proteins: FCS, HSA, human ProT, bovine histone H1 (H1) and bovine MBP. As depicted in [figure 1B](#) and online supplementary figure 1, serum samples from 160 patients with RA showed increased recognition of multiple carbamylated antigens as compared with serum from healthy individuals (n=40) (Mann-Whitney U test, $p < 0.001$ for each test). Although the overall number of patients with RA displaying antibody reactivity towards these five different antigens is similar (ranging from 39% to 58%) ([figure 1C](#)), the antigen recognition profile among individuals differs. In sera of healthy individuals, anti-CarP antibody reactivity, when present, is limited to only one or two carbamylated antigens, while up to five out of five carbamylated protein antigens are recognised by 24% of patients with RA ([figure 1D](#)). Furthermore, antibody levels correlate with the total number of proteins recognised ([figure 1E](#) and online supplementary figure 2). A strong correlation is observed between the mutual recognition of several carbamylated antigens ([figure 1F](#)). Together, these data show that anti-CarP antibodies have a broad antigen recognition profile that correlates with antibody levels. Within this broad antibody response, both self-antigens and foreign carbamylated antigens can be recognised.

Human anti-CarP antibodies are highly cross-reactive

Since anti-CarP antibodies recognise a variety of carbamylated antigens and a high correlation was observed between reactivities, we next investigated whether antibody cross-reactivity could explain these features. Cross-reactivity was determined by inhibition assays using carbamylated proteins or their unmodified counterparts. Titrations and control experiments were performed to ensure non-saturating conditions for sera and inhibitors (see online supplementary figure 3A,B). Inhibition assays employing the same protein used as antigen and inhibitor acted as positive control. Successful signal inhibition is observed for each of the five antigens (FCS, HSA, ProT, H1 and MBP) using carbamylated inhibitors, while no inhibition is observed for their non-carbamylated counterparts (see online supplementary figure 3C). Next ten serum samples both reactive to Ca-MBP and Ca-ProT were selected for subsequent inhibition experiments. Binding of anti-Ca-MBP antibodies could be inhibited by incubation with Ca-ProT ([figure 2A](#) and online supplementary figure 3D), unlike incubation with unmodified ProT. To characterise the anti-CarP antibody cross-reactivity profile in more detail, two representative serum samples containing antibodies reactive towards all five antigens were studied. In both samples, each carbamylated antigen and non-carbamylated antigen were used to inhibit all five carbamylated antigens ([figure 2B](#)). Most of the carbamylated inhibitors can interfere with antibody binding, although differences between samples and inhibitors

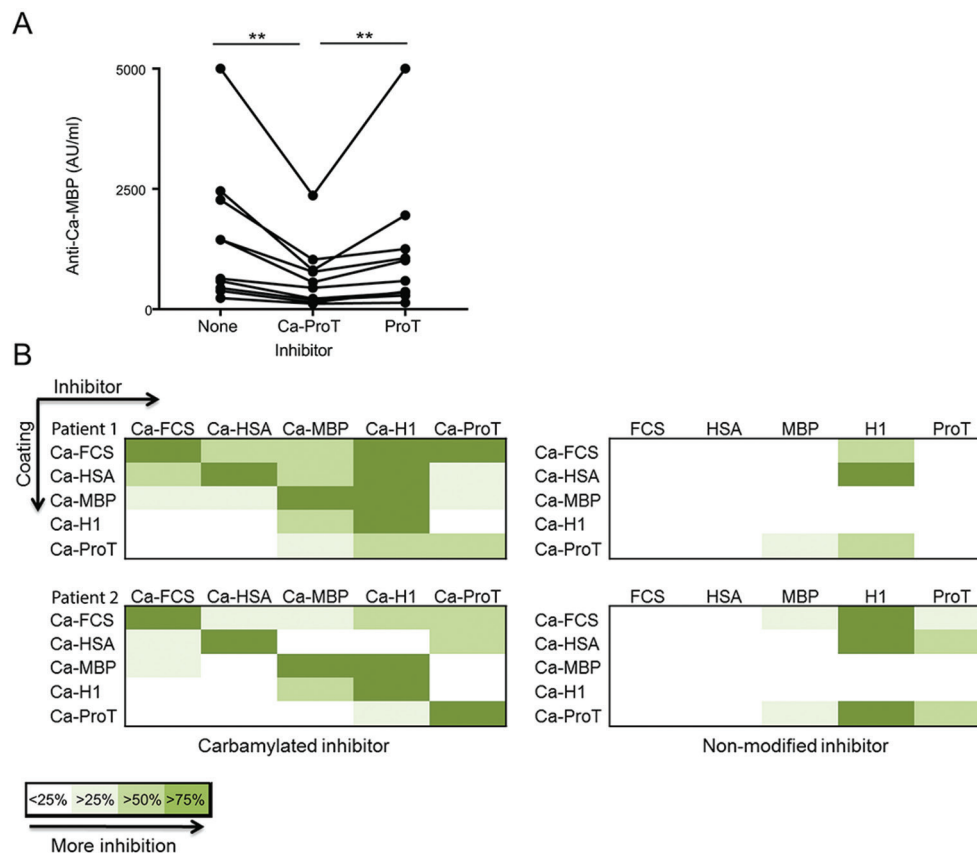


Figure 2 Anti-CarP antibodies are highly cross-reactive. (A) Ten serum samples containing both anti-Ca-MBP and anti-Ca-ProT antibodies were used for inhibition experiments. Anti-Ca-MBP antibody binding was measured with or without the presence of Ca-ProT (0.2 mg/ml) or ProT (0.2 mg/ml) as inhibitor. Statistical differences were determined by a Wilcoxon signed-rank test (** $p < 0.01$). (B) An overview of the cross-reactivity of anti-CarP antibodies is depicted. Inhibition assays by ELISA were carried out to determine the degree of cross-reactivity using two representative serum samples containing antibodies against five carbamylated antigens. Plates were coated with one protein (indicated vertically) and binding of the antibodies towards this coating was inhibited with another, or the same protein (indicated horizontally). Inhibition was calculated as a percentage of the antibody binding without inhibition. The blank was subtracted before calculating. The darkest colour indicates an inhibition of more than 75%, followed by an inhibition of more than 50%, and the light colour indicates an inhibition of more than 25%. The white blocks indicate that the inhibition is less than 25%. anti-CarP, anti-carbamylated protein; Ca, carbamylated; FCS, fetal calf serum; H1, H1 histones; HSA, human serum albumin; MBP, myelin basic protein; ProT, prothrombin.

exist. Non-carbamylated counterparts do not display an extensive inhibition profile although some inhibition was observed for H1, possibly due to the presence of other PTM on histones.²⁶ Altogether, we observe that carbamylated proteins are able to interfere with antibody binding to other unrelated carbamylated proteins, indicating that anti-CarP antibody cross-reactivity is present in patients with RA.

Carbamylated self-proteins are present in RA synovial tissue

The cross-reactive nature of anti-CarP antibodies suggests that these antibodies might react to a variety of carbamylated proteins present in target tissue. However, little is known about the presence of carbamylated proteins within affected tissue of patients with RA. Therefore, we aimed to identify carbamylated self-proteins in synovial tissue of two patients with RA by mass spectrometry. From a list of potential hits, four peptides from carbamylated human albumin were selected for further analysis: VFDEFKPLVEEPQNLIK, kLVAASQAALGL, kVPQVSTPTLVEVSR and ADDKETcFAEEGkK. The bold, underlined non-capital k indicates the homocitrulline residue. Three of these four carbamylation sites could be identified in both patients. A representative MS spectrum of carbamylated

albumin-derived peptide VFDEFKPLVEEPQNLIK is depicted in figure 3. Importantly, synthetic peptides with the same sequence displayed highly similar MS spectra confirming the correct identification of these peptides. MS spectra of the other albumin-derived peptides are depicted in online supplementary figure 4A–C. Other verified proteins in which carbamylation was detected in patients with RA include several collagens, fibronectin, fibromodulin, albumin and Sushi-repeat containing protein SRPX2. Similar carbamylated proteins could be detected in the osteoarthritic joint (data not shown). Although the extent of carbamylation was not quantified, these results indicate that carbamylated self-proteins are present locally in the synovial compartment of patients with RA.

Immunisation with carbamylated foreign proteins induces anti-CarP antibodies recognising carbamylated foreign and self-antigens

As anti-CarP antibodies from patients with RA can recognise both carbamylated self-proteins and non-self-proteins, we next investigated whether a carbamylated foreign antigen can facilitate a breach of B cell tolerance towards carbamylated self. Therefore,

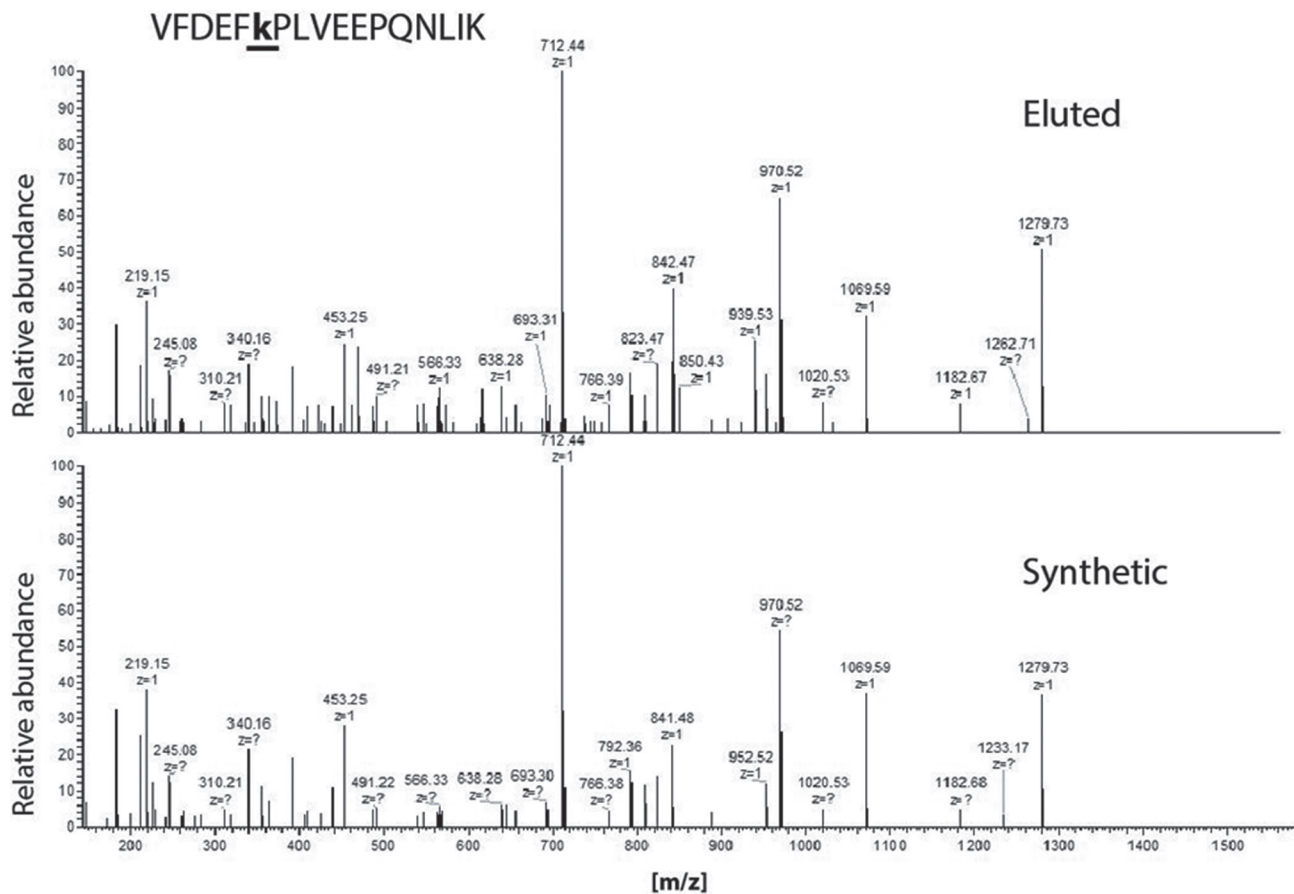


Figure 3 Identification of carbamylated albumin in RA synovial tissue. MS2 spectrum from eluted VFDEFkPLVEEPQNLIK peptide (upper panel) derived from carbamylated albumin identified in RA synovial tissue. The synthetic VFDEFkPLVEEPQNLIK peptide (lower panel) was submitted to MS2 on the same instrument. The bold, underlined non-capital k indicates the position of homocitrulline residue. MS2, tandem mass spectrometry; RA, rheumatoid arthritis.

we immunised mice with Ca-OVA or native OVA in aluminium hydroxide (alum) as a protein-free adjuvant. As depicted in figure 4A and online supplementary figure 5A, immunisation with both OVA and Ca-OVA results in the induction of a strong antibody response recognising both modified and non-modified OVA. We subsequently analysed whether murine anti-CarP antibodies were cross-reactive by determining antibody reactivity to another carbamylated foreign protein, Ca-FCS (figure 4B). In this setting, antibody reactivity to the OVA backbone will not be detected. Sera from OVA-immunised mice do not react to Ca-FCS, whereas sera from Ca-OVA-immunised mice do contain antibodies reactive to Ca-FCS.

To determine whether AMPA induced by PTM foreign proteins can cross-react with self-proteins, we examined whether sera from Ca-OVA-immunised mice contained antibodies recognising carbamylated mAlb and fibrinogen (mFib). As depicted in figure 4C, both Ca-mAlb and Ca-mFib are recognised by sera from Ca-OVA-immunised mice but not by sera from OVA-immunised control animals. Importantly, unmodified mAlb or mFib is not recognised by sera from Ca-OVA-immunised mice. These data show that auto-reactive AMPA responses can be induced by exposure to carbamylated foreign proteins. These findings were not confined to foreign antigens, as also immunisation with carbamylated self-proteins (mAlb and mFib) induced a cross-reactive anti-CarP antibody response (figure 4D–E and online supplementary figure 5B and D). Nonetheless, these data are important as they show that even in the context of a highly immunogenic ‘foreign’ antigen the immune response also

specifically recognises small PTMs as evidenced by the presence of anti-CarP antibody responses.

Because of the high structural homology between citrulline and homocitrulline we next determined whether murine anti-CarP antibodies could recognise citrullinated antigens as well. However, despite minor difference in chemical structure, no binding to Cit-Fib or Cit-FCS was detectable using anti-CarP antibody containing sera from Ca-OVA-immunised mice (figure 4F). In contrast, ACPA-containing sera from patients with RA do recognise these citrullinated antigens.

To examine the potential immunogenicity of carbamylated foreign proteins in absence of adjuvants, we next immunised mice with Ca-OVA in PBS. Interestingly, significant antibody responses against carbamylated self-proteins were induced (figure 4G), showing that immunisation with carbamylated foreign proteins in absence of adjuvant also results in a cross-reactive B cell response against modified self-proteins. These findings further support the notion that AMPA responses can be generated by exposure to carbamylated foreign antigens.

Monoclonal anti-CarP antibodies show a similar pattern of cross-reactivity towards carbamylated foreign and self-proteins

To confirm the cross-reactive nature of anti-CarP antibody responses, we generated a murine anti-CarP monoclonal from a mouse immunised with Ca-OVA. As depicted in figure 5A, this monoclonal antibody binds both carbamylated foreign

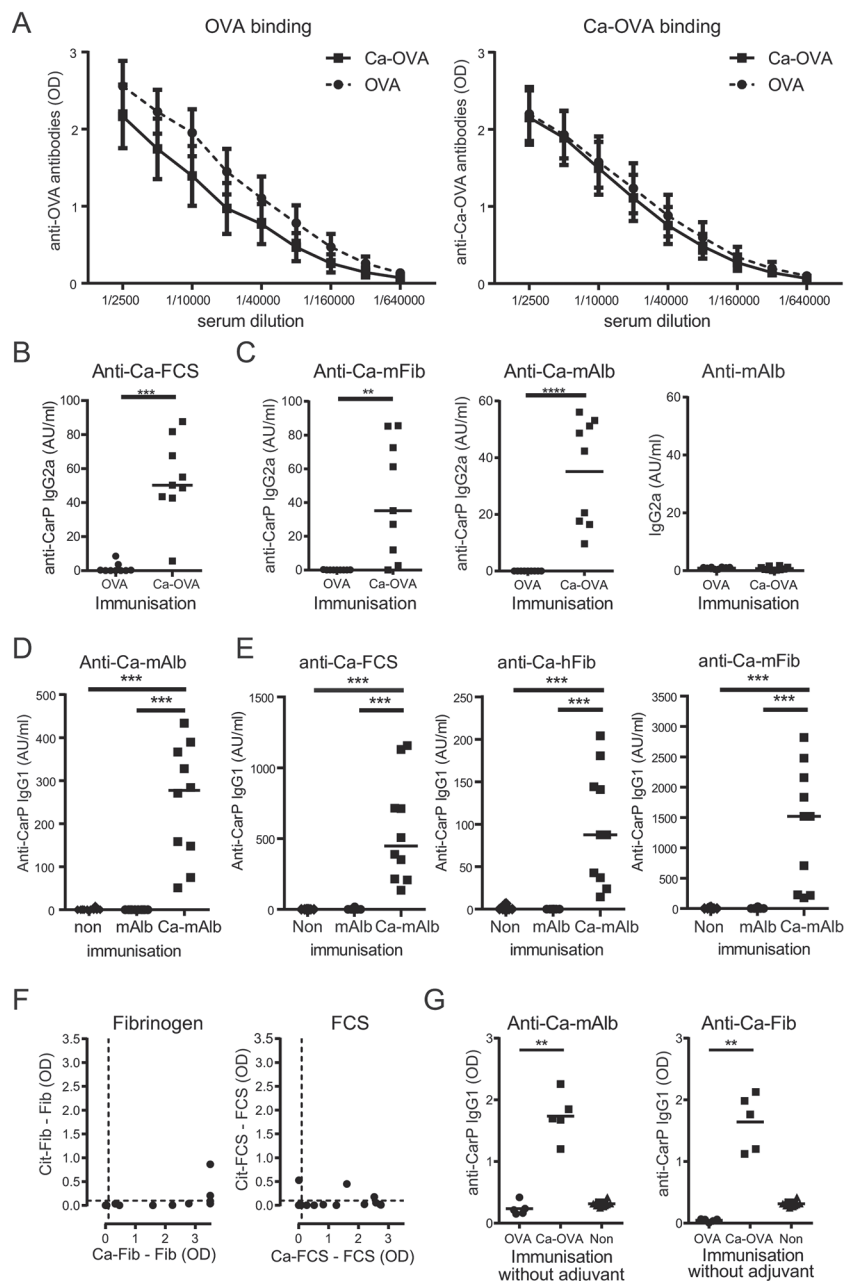


Figure 4 Carbamylated foreign proteins can induce cross-reactive anti-CarP antibodies. (A) Mice were immunised with foreign antigens OVA or Ca-OVA. Sera from immunised mice, OVA (circles) and Ca-OVA (squares), were analysed for binding towards OVA (left panel) and anti-Ca-OVA (right panel) by ELISA ($n=10$). (B) Antibody reactivity towards Ca-FCS from mice immunised with OVA (circles) and Ca-OVA (squares) was determined by ELISA. Representative data from three experiments are shown. Each dot represents data from one mouse ($n=10$, *** $p<0.001$ and ** $p<0.01$, Mann-Whitney U test). (C) Antibody reactivity towards Ca-mFib (left panel), Ca-mAlb (middle panel) and native mAlb (right panel) from immunised mice, OVA (circles) and Ca-OVA (squares). Representative data from three experiments are shown ($n=10$, Mann-Whitney U test, *** $p<0.001$). (D) Mice were immunised with a carbamylated self-antigen, mouse albumin (Ca-mAlb) or native albumin (mAlb) in aluminium hydroxide. Sera from immunised mice (Ca-mAlb) (depicted as squares), mAlb (depicted as circles) and non-immunised mice (depicted as triangles) were analysed for reactivity towards Ca-mAlb. Representative data from three experiments are shown. Each dot represents data from one mouse. Statistical difference was determined by the Mann-Whitney U test ($n=10$, *** $p<0.001$). (E) Sera of (Ca-)mAlb immunised mice were analysed for reactivity towards Ca-FCS (left panel), Ca human fibrinogen (Ca-hFib) (middle panel) and Ca-mouse fibrinogen (Ca-mFib) (right panel). Sera from Ca-mAlb (depicted as squares), mAlb (depicted as circles) and non-immunised mice (depicted as triangles) were analysed by ELISA. Representative data from three experiments are shown. Each dot represents data from one mouse ($n=10$, *** $p<0.001$, Mann-Whitney U test). (F) Correlation between antibody reactivity of Ca-OVA-immunised mice towards carbamylated human fibrinogen (Ca-Fib) and citrullinated human fibrinogen (Cit-Fib) (left panel) and correlation between antibody reactivity towards Ca-FCS versus citrullinated FCS (Cit-FCS) (right panel) ($n=10$, Spearman rank test). (G) Mice were immunised with foreign antigens OVA or Ca-OVA in the absence of adjuvant. Sera from immunised mice OVA (circles), Ca-OVA (squares) and non-immunised mice (triangles) were analysed for binding towards carbamylated self-proteins, Ca-mAlb (left panel) and Ca-mFib (right panel) ($n=5$, Mann-Whitney U test, ** $p<0.01$). anti-CarP, anti-carbamylated protein; Ca, carbamylated; FCS, fetal calf serum; IgG, immunoglobulin G; OD, optical density; OVA, ovalbumin.

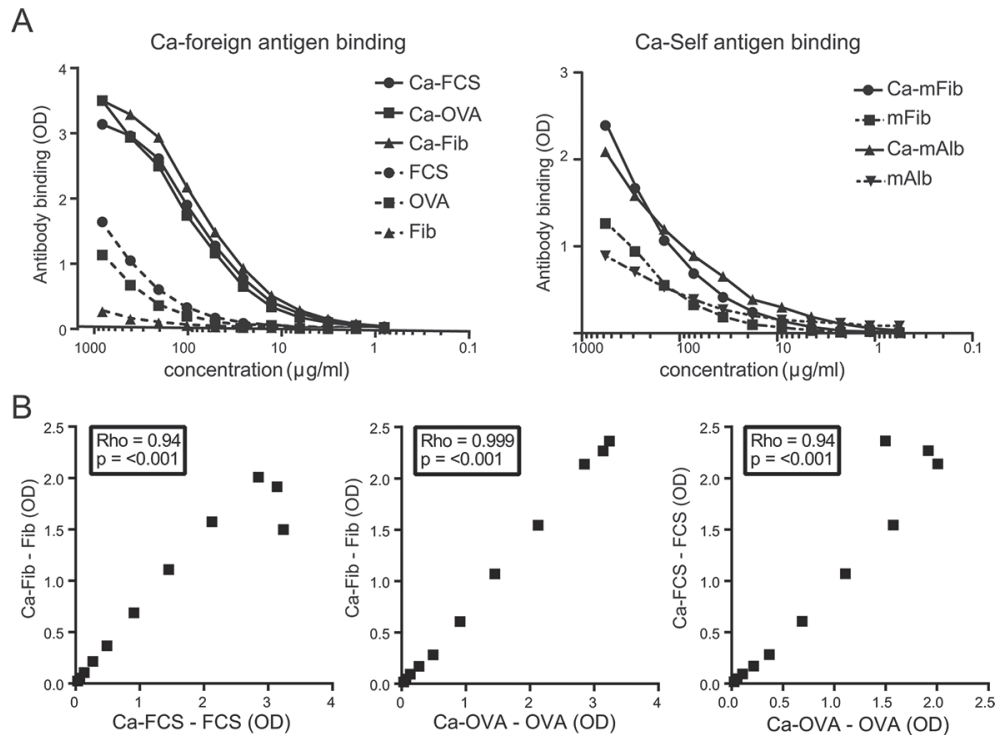


Figure 5 Monoclonal antibodies are highly specific and cross-reactive towards carbamylated foreign and self-antigens. (A) Binding of a murine anti-CarP monoclonal antibody towards carbamylated foreign proteins; Ca-FCS, Ca-OVA, Ca-Fib (human fibrinogen) and non-modified counterparts were tested using ELISA (left panel). Reactivity of the anti-CarP monoclonal antibody towards carbamylated self-proteins; Ca-mFib (mouse fibrinogen), Ca-mAlb (mouse albumin) and non-modified counterparts were measured by ELISA (right panel). (B) The correlation between anti-CarP antibody reactivity towards Ca-Fib and Ca-FCS is shown in the left panel ($\rho=0.999$) and for Ca-Fib compared with Ca-OVA is depicted in the middle panel ($\rho=0.936$). Correlation between anti-CarP antibody reactivity towards Ca-OVA and Ca-FCS is depicted in the right panel ($\rho=0.936$). The Spearman rank test was carried out to determine the degree of statistical correlation ($n=11$). anti-CarP, anti-carbamylated protein; Ca, carbamylated; FCS, fetal calf serum; OD, optical density; OVA, ovalbumin.

proteins and self-proteins. We observe a significant correlation between the monoclonal antibody binding to Ca-FCS, Ca-OVA and Ca-Fib (figure 5B) confirming its cross-reactive nature. Thus, as observed for polyclonal anti-CarP antibodies from mice immunised with a foreign antigen, strong cross-reactivity is observed towards different carbamylated foreign and self-proteins at the monoclonal antibody level, confirming that self-reactive AMPA can be induced by exposure to foreign PTM proteins.

DISCUSSION

A key characteristic of RA is the occurrence of autoantibodies against PTM proteins.^{2 8–10} Here, we report that post-translational modification of foreign proteins, in particular carbamylation, represents one way in which immune tolerance at the B cell level towards self can be broken. In patients with RA, we found that anti-CarP antibodies present within one serum sample are cross-reactive towards different carbamylated proteins, including foreign and self-proteins. To study how autoreactive B cell responses against PTM self-proteins can be induced, we used carbamylated model antigens (OVA and mAlb) in mice. Our observations reveal that carbamylation of self-proteins and foreign proteins is sufficient for a breach of immunological tolerance and the formation of autoreactive anti-CarP antibodies. Previous animal studies showed that immunogenicity of proteins is enhanced upon citrullination.^{27–29} Likewise, although cross-reactive AMPA responses have been described,^{9 10 30} it has not been demonstrated that AMPA-producing B cells recognising a particular modified self-protein can be induced by other unrelated modified proteins or that immunisation with a modified

(structurally unrelated) foreign protein leads to the induction of a cross-reactive AMPA response against self. Clearly, human studies demonstrating this principle are challenging as the auto-antibody-eliciting events are unknown and difficult to control.³¹

Recently, we showed that mice are able to mount an antibody response against carbamylated proteins.²³ Therefore, we could now address the question whether exposure of a host to a carbamylated foreign protein can lead to the formation of an autoreactive B cell response. Our data show that anti-CarP autoantibodies can, indeed, be induced by carbamylated foreign antigens. These autoantibodies react, both at the polyclonal and the monoclonal levels, to different carbamylated proteins, confirming that anti-CarP antibodies are cross-reactive. This high-level cross-reactivity is likely explaining why carbamylated foreign proteins can induce an autoreactive B cell response, and indicates that the epitope recognised by responding B cells can be present on a variety of proteins, either of self-origin or non-self-origin.

In RA, we have shown that anti-CarP antibodies are able to recognise different carbamylated (auto)antigens. Similar findings have been reported for other AMPA responses.^{9 10 30} For example, previous human studies have shown that also ACPA exhibit cross-reactive properties towards different citrullinated self-antigens and foreign antigens.^{30 32–36} Interestingly, although citrulline greatly resembles homocitrulline in structure, we were unable to detect an antibody response against citrullinated proteins in mice. Also vaccination with citrullinated proteins did not induce an ACPA response (data not shown). Therefore, we were not able to analyse whether autoreactive ACPA could also

be induced by (citruillinated) foreign proteins. Nonetheless, given the cross-reactive properties of ACPA,^{37–40} it is highly conceivable that similar principles as identified for anti-CarP antibody responses apply to other classes of AMPA as well.

Although it is unknown how autoantibodies against PTM proteins are generated in humans, it is often speculated that an autoreactive T cell response recognising such self-proteins is crucial for their appearance. Clearly, our results are not incompatible with this notion and do not indicate that such T cell help would not contribute to the induction of B cell-mediated autoimmunity against PTM proteins. However, our results provide first evidence that also T cells recognising ‘conventional’ foreign antigens could be involved in the induction of AMPA-producing B cell responses that recognise modified self-proteins. So far, it is unclear to what extent T cell tolerance is lost in RA as identification of PTM epitopes recognised by autoreactive T cells has been proven difficult. Although T cell responses against PTM self-proteins have been described,^{41–43} frequencies of citrulline specific T cells are estimated to be 10 times lower as compared with T cell frequencies to recall antigen as approximately 1 in 100 000 CD4 cells have been reported to react with tetramers containing citruillinated peptides compared with 1:10 000 CD4 cells for tetanus toxoid specific T cells.^{43–44} Nonetheless, animal studies show that PTM proteins can generate antigen-specific T cell responses.^{19–27–29–45} However, at present it is still unclear to what extent these T cells provide help to autoreactive B cells in human RA. Our data indicate that T cell help required for the generation of isotype-switched AMPA responses can be provided by T cells directed against foreign antigens (see online supplementary figure 6). We consider it likely that the initiating event leading to the formation of autoantibodies against carbamylated proteins is not found in the induction of a (T cell) response against carbamylated self-proteins but rather in the induction of immune responses against modified foreign antigens. The only requirement would be that the foreign antigen recognised by the T cells contains PTMs seen by B cells. Such requirement could be met during infection as the conditions to post-translationally modify microbe-derived proteins readily occur during infection. This could, for example, be mediated through release of PAD by neutrophils during NETosis (citrullination),^{46–47} the release of myeloid peroxidase leading to enhanced carbamylation or the presence of bacterial-derived acetylated proteins.^{1–12–48} In all these cases, microbe-derived proteins express or can acquire a PTM that can be targeted by responding B cells. These B cells are likely to obtain help from microbe-directed T cells required for further somatic hypermutation. Since self-proteins can also undergo similar PTM, some B cells will conceivably be selected on modified self-proteins leading to the development of a self-reactive B cell response. In this scenario, autoimmunity can emerge without the presence of autoreactive T cells.

These considerations are important for the development of tolerising protocols aiming to dampen or inactivate putative autoreactive T cells in an antigen-specific fashion. Likewise, they are also of relevance to define the autoimmune inciting antigen as the recognition of a particular antigen by autoreactive B cells or antibodies might not relate to the antigen that was required to induce the B cell response.

In conclusion, our results clearly indicate that carbamylated foreign proteins are able to induce a breach of tolerance at the B cell level leading to the formation of cross-reactive anti-CarP antibodies recognising modified self-proteins. We consider it likely that anti-CarP B cell responses can result from inflammatory conditions induced, for example, by infection, as it is conceivable that in such conditions carbamylated foreign

proteins are recognised by the responding immune system. The evoking anti-CarP immune response might subsequently cross-react to carbamylated self-proteins that are also expressed in the joints of patients with RA, thereby possibly contributing to the local inflammatory reaction present in RA.

Contributors REMT, LAT, TWJH, JNS, JSD and MKV designed the study and experiments. JSD, MKV, JNS, BL, PAvV, AHDR, GMCI, SR, AIF and MH conducted the experiments and acquired and analyzed the data. JSD, MKV, LAT and REMT wrote the manuscript. All authors read and commented on the manuscript.

Funding The authors wish to acknowledge the support of the IMI JU-funded project BeTheCure (contract no. 115142-2) and Pfizer (code: RA-IMI-037). LAT was financially supported by a VIDJ grant from NWO-Zon-MW. RT was financially supported by a VICI grant from NWO-Zon-MW. JSD was financially supported by the Dutch Arthritis Foundation (project no. 13-3-401). MH (who is an employee of Pfizer) has been involved in technical discussions and scientific collaboration. The funders had no final role in study design, data collection and analysis, decision to publish or preparation of the manuscript.

Competing interests None declared.

Ethics approval Ethics Committee/Institutional Review Board of the Leiden University Medical Center.

Provenance and peer review Not commissioned; externally peer reviewed.

© Article author(s) (or their employer(s) unless otherwise stated in the text of the article) 2017. All rights reserved. No commercial use is permitted unless otherwise expressly granted.

REFERENCES

- Anzilotti C, Pratesi F, Tommasi C, *et al.* Peptidylarginine deiminase 4 and citrullination in health and disease. *Autoimmun Rev* 2010;9:158–60.
- Willems A, Trouw LA, Toes REM, *et al.* The influence of ACPA status and characteristics on the course of RA. *Nat Rev Rheumatol* 2012;8:144–52.
- De Rycke L, *et al.* Rheumatoid factor and anticitrullinated protein antibodies in rheumatoid arthritis: diagnostic value, associations with radiological progression rate, and extra-articular manifestations. *Ann Rheum Dis* 2004;63:1587–93.
- Shidara K, Inoue E, Hoshi D, *et al.* Anti-cyclic citrullinated peptide antibody predicts functional disability in patients with rheumatoid arthritis in a large prospective observational cohort in Japan. *Rheumatol Int* 2012;32:361–6.
- Humphreys JH, van Nies JA, Chipping J, *et al.* Rheumatoid factor and anti-citrullinated protein antibody positivity, but not level, are associated with increased mortality in patients with rheumatoid arthritis: results from two large independent cohorts. *Arthritis Res Ther* 2014;16:483.
- Huizinga TW, Amos CI, van der Helm-van Mil AH, *et al.* Refining the complex rheumatoid arthritis phenotype based on specificity of the HLA-DRB1 shared epitope for antibodies to citrullinated proteins. *Arthritis Rheum* 2005;52:3433–8.
- Linn-Rasker SP, van der Helm-van Mil AH, van Gaalen FA, *et al.* Smoking is a risk factor for anti-CCP antibodies only in rheumatoid arthritis patients who carry HLA-DRB1 shared epitope alleles. *Ann Rheum Dis* 2006;65:366–71.
- Shi J, Knevel R, Suwannalai P, *et al.* Autoantibodies recognizing carbamylated proteins are present in sera of patients with rheumatoid arthritis and predict joint damage. *Proc Natl Acad Sci U S A* 2011;108:17372–7.
- Thiele GM, Duryee MJ, Anderson DR, *et al.* Malondialdehyde-acetaldehyde adducts and anti-malondialdehyde-acetaldehyde antibodies in rheumatoid arthritis. *Arthritis Rheumatol* 2015;67:645–55.
- Juarez M, Bang H, Hammar F, *et al.* Identification of novel antiacetylated vimentin antibodies in patients with early inflammatory arthritis. *Ann Rheum Dis* 2016;75:1099–107.
- Figueiredo CP, Bang H, Cobra JF, *et al.* Antimodified protein antibody response pattern influences the risk for disease relapse in patients with rheumatoid arthritis tapering disease modifying antirheumatic drugs. *Ann Rheum Dis* 2017;76:399–407.
- Shi J, van Veelen PA, Mahler M, *et al.* Carbamylation and antibodies against carbamylated proteins in autoimmunity and other pathologies. *Autoimmun Rev* 2014;13:225–30.
- Brink M, Verheul MK, Rönnelid J, *et al.* Anti-carbamylated protein antibodies in the pre-symptomatic phase of rheumatoid arthritis, their relationship with multiple anti-citrulline peptide antibodies and association with radiological damage. *Arthritis Res Ther* 2015;17:25.
- Shi J, van de Stadt LA, Levarht EW, *et al.* Anti-carbamylated protein (anti-CarP) antibodies precede the onset of rheumatoid arthritis. *Ann Rheum Dis* 2014;73:780–3.
- Gan RW, Trouw LA, Shi J, *et al.* Anti-carbamylated protein antibodies are present prior to rheumatoid arthritis and are associated with its future diagnosis. *J Rheumatol* 2015;42:572–9.
- Shi J, van de Stadt LA, Levarht EW, *et al.* Anti-carbamylated protein antibodies are present in arthralgia patients and predict the development of rheumatoid arthritis. *Arthritis Rheum* 2013;65:911–5.

- 17 Rantapää-Dahlqvist S, de Jong BA, Berglin E, *et al.* Antibodies against cyclic citrullinated peptide and IgA rheumatoid factor predict the development of rheumatoid arthritis. *Arthritis Rheum* 2003;48:2741–9.
- 18 Nielen MM, van Schaardenburg D, Reesink HW, *et al.* Specific autoantibodies precede the symptoms of rheumatoid arthritis: a study of serial measurements in blood donors. *Arthritis Rheum* 2004;50:380–6.
- 19 Mydel P, Wang Z, Brissler M, *et al.* Carbamylation-dependent activation of T cells: a novel mechanism in the pathogenesis of autoimmune arthritis. *J Immunol* 2010;184:6882–90.
- 20 Burska AN, Hunt L, Boissinot M, *et al.* Autoantibodies to posttranslational modifications in rheumatoid arthritis. *Mediators Inflamm* 2014;2014:1–19.
- 21 Zavala-Cerna MG, Martínez-García EA, Torres-Bugarín O, *et al.* The clinical significance of posttranslational modification of autoantigens. *Clin Rev Allergy Immunol* 2014;47:73–90.
- 22 Vossenaar ER, Nijenhuis S, Helsen MM, *et al.* Citrullination of synovial proteins in murine models of rheumatoid arthritis. *Arthritis Rheum* 2003;48:2489–500.
- 23 Stoop JN, Liu BS, Shi J, *et al.* Antibodies specific for carbamylated proteins precede the onset of clinical symptoms in mice with collagen induced arthritis. *PLoS One* 2014;9:e102163.
- 24 Stoop JN, Fischer A, Hayer S, *et al.* Anticarbamylated protein antibodies can be detected in animal models of arthritis that require active involvement of the adaptive immune system. *Ann Rheum Dis* 2015;74:949–50.
- 25 de Rooy DP, van der Linden MP, Knevel R, *et al.* Predicting arthritis outcomes—what can be learned from the leiden early arthritis clinic? *Rheumatology* 2011;50:93–.
- 26 Tessarz P, Kouzarides T. Histone core modifications regulating nucleosome structure and dynamics. *Nat Rev Mol Cell Biol* 2014;15:703–8.
- 27 Lundberg K, Nijenhuis S, Vossenaar ER, *et al.* Citrullinated proteins have increased immunogenicity and arthritogenicity and their presence in arthritic joints correlates with disease severity. *Arthritis Res Ther* 2005;67:R458.
- 28 Hill JA, Bell DA, Brintnell W, *et al.* Arthritis induced by posttranslationally modified (citrullinated) fibrinogen in DR4-IE transgenic mice. *J Exp Med* 2008;205:967–79.
- 29 Kinloch AJ, Alzabin S, Brintnell W, *et al.* Immunization with porphyromonas gingivalis enolase induces autoimmunity to mammalian α -enolase and arthritis in DR4-IE-transgenic mice. *Arthritis Rheum* 2011;63:3818–23.
- 30 Ioan-Facsinay A, el-Bannoudi H, Scherer HU, *et al.* Anti-cyclic citrullinated peptide antibodies are a collection of anti-citrullinated protein antibodies and contain overlapping and non-overlapping reactivities. *Ann Rheum Dis* 2011;70:188–93.
- 31 Lundberg K, Kinloch A, Fisher BA, *et al.* Antibodies to citrullinated alpha-enolase peptide 1 are specific for rheumatoid arthritis and cross-react with bacterial enolase. *Arthritis Rheum* 2008;58:3009–19.
- 32 van Beers JJ, Willemze A, Jansen JJ, *et al.* ACPA fine-specificity profiles in early rheumatoid arthritis patients do not correlate with clinical features at baseline or with disease progression. *Arthritis Res Ther* 2013;15:R140.
- 33 van der Woude D, Rantapää-Dahlqvist S, Ioan-Facsinay A, *et al.* Epitope spreading of the anti-citrullinated protein antibody response occurs before disease onset and is associated with the disease course of early arthritis. *Ann Rheum Dis* 2010;69:1554–61.
- 34 van Heemst J, Trouw LA, Nogueira L, *et al.* An investigation of the added value of an ACPA multiplex assay in an early rheumatoid arthritis setting. *Arthritis Res Ther* 2015;17.
- 35 Lundberg K, Bengtsson C, Kharlamova N, *et al.* Genetic and environmental determinants for disease risk in subsets of rheumatoid arthritis defined by the anticitrullinated protein/peptide antibody fine specificity profile. *Ann Rheum Dis* 2013;72:652–8.
- 36 Sokolove J, Bromberg R, Deane KD, *et al.* Autoantibody epitope spreading in the pre-clinical phase predicts progression to rheumatoid arthritis. *PLoS One* 2012;7:e35296.
- 37 Scinocca M, Bell DA, Racapé M, *et al.* Antihomocitrullinated fibrinogen antibodies are specific to rheumatoid arthritis and frequently bind citrullinated proteins/peptides. *J Rheumatol* 2014;41:270–9.
- 38 Shi J, Willemze A, Janssen GM, *et al.* Recognition of citrullinated and carbamylated proteins by human antibodies: specificity, cross-reactivity and the 'AMC-Senshu' method. *Ann Rheum Dis* 2013;72:148–50.
- 39 Juarez M, Bang H, Hammar F, *et al.* Identification of novel acetylated vimentin antibodies in patients with early inflammatory arthritis. *Ann Rheum Dis* 2016;75:1099–107.
- 40 Reed E, Jiang X, Kharlamova N, *et al.* Antibodies to carbamylated α -enolase epitopes in rheumatoid arthritis also bind citrullinated epitopes and are largely indistinct from anti-citrullinated protein antibodies. *Arthritis Res Ther* 2016;18:96.
- 41 Law SC, Street S, Yu CH, *et al.* T-cell autoreactivity to citrullinated autoantigenic peptides in rheumatoid arthritis patients carrying HLA-DRB1 shared epitope alleles. *Arthritis Res Ther* 2012;14:R118.
- 42 Hill JA, Southwood S, Sette A, *et al.* Cutting edge: the conversion of arginine to citrulline allows for a high-affinity peptide interaction with the rheumatoid arthritis-associated HLA-DRB1*0401 MHC class II molecule. *J Immunol* 2003;171:538–41.
- 43 Scally SW, Petersen J, Law SC, *et al.* A molecular basis for the association of the HLA-DRB1 locus, Citrullination, and rheumatoid arthritis. *J Exp Med* 2013;210:2569–82.
- 44 James EA, Bui J, Berger D, *et al.* Tetramer-guided epitope mapping reveals broad, individualized repertoires of tetanus toxin-specific CD4+ T cells and suggests HLA-based differences in epitope recognition. *Int Immunol* 2007;19:1291–301.
- 45 Snir O, Rieck M, Gebe JA, *et al.* Identification and functional characterization of T cells reactive to Citrullinated vimentin in HLA-DRB1*0401-positive humanized mice and rheumatoid arthritis patients. *Arthritis Rheum* 2011;63:2873–83.
- 46 Blachère NE, Parveen S, Fak J, *et al.* Inflammatory but not apoptotic death of granulocytes citrullinates fibrinogen. *Arthritis Res Ther* 2015;17.
- 47 König MF, Andrade F. A critical reappraisal of neutrophil extracellular traps and NETosis mimics based on differential requirements for protein citrullination. *Front Immunol* 2016;7:461.
- 48 Jones JD, O'Connor CD. Protein acetylation in prokaryotes. *Proteomics* 2011;11:3012–22.