



Universiteit
Leiden
The Netherlands

A percutaneous treatment strategy of an adult patient with a bicuspid aortic valve, coarctation of the aorta, and an exceptionally large aneurysm of a collateral artery: case report and literature overview

Verheijen, D.B.H.; Stoeger, J.L.; Kley, F. van der; Schaliij, M.J.; Jongbloed, M.R.M.; Vliegen, H.W.; ... ; Egorova, A.D.

Citation

Verheijen, D. B. H., Stoeger, J. L., Kley, F. van der, Schaliij, M. J., Jongbloed, M. R. M., Vliegen, H. W., ... Egorova, A. D. (2022). A percutaneous treatment strategy of an adult patient with a bicuspid aortic valve, coarctation of the aorta, and an exceptionally large aneurysm of a collateral artery: case report and literature overview. *Frontiers In Cardiovascular Medicine*, 9. doi:10.3389/fcvm.2022.1012147

Version: Publisher's Version

License: [Creative Commons CC BY 4.0 license](https://creativecommons.org/licenses/by/4.0/)

Downloaded from: <https://hdl.handle.net/1887/3567812>

Note: To cite this publication please use the final published version (if applicable).



OPEN ACCESS

EDITED BY
Constance G. Weismann,
Lund University, Sweden

REVIEWED BY
Francesco Patanè,
Azienda Ospedaliera Ospedali Riuniti
Papardo Piemonte, Italy
Joanna Hlebowicz,
Lund University, Sweden

*CORRESPONDENCE
A. D. Egorova
✉ a.egorova@lumc.nl

SPECIALTY SECTION
This article was submitted to
Heart Valve Disease,
a section of the journal
Frontiers in Cardiovascular Medicine

RECEIVED 05 August 2022
ACCEPTED 30 November 2022
PUBLISHED 22 December 2022

CITATION
Verheijen DBH, Stöger JL,
van der Kley F, Schalij MJ,
Jongbloed MRM, Vliegen HW, Kiès P
and Egorova AD (2022) A
percutaneous treatment
strategy of an adult patient with a bicuspid
aortic valve, coarctation of the aorta,
and an exceptionally large aneurysm
of a collateral artery: Case report
and literature overview.
Front. Cardiovasc. Med. 9:1012147.
doi: 10.3389/fcvm.2022.1012147

COPYRIGHT
© 2022 Verheijen, Stöger, van der Kley,
Schalij, Jongbloed, Vliegen, Kiès and
Egorova. This is an open-access article
distributed under the terms of the
[Creative Commons Attribution License
\(CC BY\)](https://creativecommons.org/licenses/by/4.0/). The use, distribution or
reproduction in other forums is
permitted, provided the original
author(s) and the copyright owner(s)
are credited and that the original
publication in this journal is cited, in
accordance with accepted academic
practice. No use, distribution or
reproduction is permitted which does
not comply with these terms.

A percutaneous treatment strategy of an adult patient with a bicuspid aortic valve, coarctation of the aorta, and an exceptionally large aneurysm of a collateral artery: Case report and literature overview

D. B. H. Verheijen^{1,2}, J. Laurant Stöger³, F. van der Kley^{1,2},
M. J. Schalij^{1,2}, M. R. M. Jongbloed^{1,2,4}, H. W. Vliegen^{1,2},
P. Kiès^{1,2} and A. D. Egorova^{1,2*}

¹CAHAL, Center for Congenital Heart Disease Amsterdam Leiden, Leiden University Medical Center, Leiden, Netherlands, ²Department of Cardiology, Leiden University Medical Center, Leiden, Netherlands, ³Department of Radiology, Leiden University Medical Center, Leiden, Netherlands, ⁴Department of Anatomy and Embryology, Leiden University Medical Center, Leiden, Netherlands

Coarctation of the aorta (CoA) is a congenital heart defect that is associated with a bicuspid aortic valve (BAV), ascending aorta dilatation, intracerebral aneurysms, and premature atherosclerotic disease. The first presentation during late adulthood is rare and is frequently driven by late sequelae. Hypertrophic collateral arteries can develop aneurysms which are at risk for spontaneous rupture, however, treatment recommendations for these aneurysms are scarce. Here, we describe the clinical course and percutaneous treatment strategy of a patient with a late diagnosis of a pin-point CoA, a BAV with moderate regurgitation, and an exceptionally large aneurysm of a collateral artery. A 59-year-old woman was diagnosed with *Streptococcus bovis* endocarditis of a BAV with moderate aortic valve regurgitation and small vegetation (<5 mm) on the non-coronary cusp. Work-up revealed hypertension and adenocarcinoma *in situ* of the ascending colon, considered the bacteremia porte d'entrée, for which a curative hemicolectomy was performed. Echocardiography showed a narrowing of the aorta distal from the origin of the left subclavian artery with the antegrade diastolic flow with a pathognomonic "sawtooth" pattern and an estimated pressure gradient of >70 mmHg. Computed tomography angiography (CTA) showed a network of well-developed collateral arteries and a levoatriocardinal vein. One of the collateral arteries arising from the left subclavian artery revealed an exceptionally large aneurysmatic dilation (29 × 24 × 24 mm). The invasive assessment confirmed a hemodynamically significant CoA. Treatment involved balloon dilatation and placement of a covered stent at the site of the pin-point CoA and a percutaneous coronary intervention (PCI) of the stenosis

in the left anterior descending artery. No residual gradient over the CoA was observed. Antihypertensive drugs could be discontinued, and CTA performed 4 months later showed regression and thrombosis of the numerous collaterals and, importantly, thrombosis of the large aneurysm. This case illustrates the late diagnosis of CoA with associated congenital heart defects and late sequelae including hypertension, BAV endocarditis, coronary artery disease, and aneurysm formation of the extensive collateral network. The patient underwent pharmacological and percutaneous treatment, ultimately resulting in the alleviation of the CoA, normalization of the blood pressure, reduction of collateral flow, and thrombosis of the large aneurysm of the collateral artery.

KEYWORDS

coarctation of aorta, bicuspid aortic valve, collateral arteries, aneurysm, endocarditis, percutaneous intervention, percutaneous catheter technique, adult congenital heart disease

Introduction

Coarctation of the aorta (CoA) is a relatively common congenital heart defect, accounting for 5–8% of all congenital heart and great vessel anomalies and is reported in about 1–2,500 of live births with a male preponderance (1–4). Narrowing of the aorta in the region of the ductus/ligamentum arteriosus (often referred to as juxtaductal or paraductal) is the most frequently diagnosed CoA in adults (5, 6). CoA can present as an isolated defect, however, it is often associated with other cardiac defects, including a bicuspid aortic valve in up to 85% of patients and intracerebral aneurysms of the circle of Willis in up to 10% of cases (2, 3, 7–10). Arterial hypertension is usually present, and CoA is associated with an increased risk of aortic dilatation and aneurysm formation (particularly ascending aorta or isthmus), premature coronary artery disease (CAD), and infective endocarditis or endarteritis (10–13).

Clinical presentation of CoA largely depends on the hemodynamic severity of the flow limitation in the thoracic aorta. During the neonatal period, presentation is usually related to left ventricular dysfunction—due to increased afterload after the closure of the ductus arteriosus—and decreased oxygen saturation due to a limitation of blood supply to the lower extremities (3). In adulthood, patients more often present with morbidity caused by prolonged upper extremity hypertension or late vascular complications (3). Untreated or undiagnosed adults with sub-clinical CoA typically have either a relatively mild stenosis or sufficiently developed collateral arteries. Treatment-resistant hypertension or a murmur may have been documented, but are often not recognized as the sequelae of a CoA, contributing to delayed diagnosis.

A blood pressure difference between the upper and lower extremities of ≥ 20 mmHg, a radio-radial or radio-femoral delay, and weak or absent arterial pulses in the lower extremities

suggest a significant hemodynamic CoA. In the presence of a sufficiently developed collateral network bypassing the coarctation, the *trans*-coarctation pressure gradient is often less severe (2, 14). Transthoracic echocardiography is usually the first technique to diagnose CoA or to at least raise the suspicion thereof. Cardiovascular magnetic resonance imaging (MRI) and computed tomography angiography (CTA) are better suited to assess the anatomy of the aorta and the isthmus in detail, in particular, the spatial relation between the CoA and the surrounding (collateral) arteries. For the evaluation of the hemodynamic significance of the CoA, an invasive hemodynamic assessment is imperative, with a peak-to-peak gradient ≥ 20 mmHg being considered significant (15, 16).

In adults, the preferred management strategy of CoA is the implantation of a covered stent by a percutaneous endovascular intervention (17–19). However, treatment recommendations for associated defects such as collateral arterial aneurysms are more scarce. This case report describes the clinical course and treatment strategy of a patient with a moderate regurgitation of a bicuspid aortic valve, a mildly dilated ascending aorta, and a hemodynamically significant focal CoA with an exceptionally large aneurysm of a collateral artery arising from the left subclavian artery.

Case presentation

A 59-year-old woman with no medical history apart from hypercholesterolemia at the time of presentation presented to the emergency department with complaints of malaise and a persistent fever of $> 39^{\circ}\text{C}$. She reported fatigue, unintentional weight loss, and night sweats in the months prior to the presentation. She was hypertensive with an upper extremity blood pressure of 160/65 mmHg, heart rate of 116 bpm, and

temperature of 39.7°C. Auscultation revealed a grade II/VI diastolic and grade III/VI systolic murmur with punctum maximum over the aortic valve and a loud continuous murmur over the left scapula. No signs of congestion or endocarditis stigmata were documented. She was admitted and empirically treated with flucloxacillin, which was switched to benzylpenicillin when multiple blood cultures showed the growth of *Streptococcus bovis* within the first 24 h. Further abdominal imaging (performed due to the known association with colon tumors of a *Streptococcus bovis* bacteremia) revealed an adenocarcinoma *in situ* of the ascending colon, which was considered the porte d'entrée. The patient was deemed eligible for curative hemicolectomy with stage T1N0M0 malignancy.

Clinical work-up for a complicated bacteriemia, as well as the abnormalities on physical examination, prompted further evaluation. Transthoracic echocardiography showed a concentric hypertrophic left ventricle (LV) with an increased LV mass index (143 g/m²) with a good systolic function (LVEF 59%) and a functionally bicuspid aortic valve with moderate regurgitation and a mobile mass of 4 mm in length on the non-coronary cusp. Moreover, mild dilation of the ascending aorta (38 mm) and narrowing of the aorta distal from the origin of the left subclavian artery with the antegrade diastolic flow in the thoracic aorta with a typical “saw tooth” pattern and an estimated pressure gradient of 78 mmHg (V_{max} 4.4 m/s) was observed, indicating significant aortic coarctation (Figures 1A–G). The ECG showed sinus rhythm with high voltages of the QRS complex in left precordial leads, meeting the Sokolow–Lyon criteria for left-ventricular hypertrophy. A chest X-ray showed subtle bilateral notching on the inferior borders of several posterior ribs and a rounded opacity projecting over the paramediastinal aspect of the left upper lobe (Figures 2A, B). Given the good response to antibiotic treatment, the small size of the vegetation (<10 mm), no signs of distal embolization, and non-severe aortic valve regurgitation which was hemodynamically well tolerated, conservative antibiotic treatment with intravenous benzylpenicillin for a total of 6 weeks was pursued after multidisciplinary evaluation by the endocarditis team (20–22). Blood cultures taken a day after antibiotic treatment initiation showed no growth, and the patient remained afebrile. After antibiotic treatment, the patient showed no signs of persistent or recurrent infection, and blood cultures 4 months following the last dose of benzylpenicillin remained negative.

A CTA of the chest was performed to accurately visualize the anatomy of the thoracic aorta. This confirmed a severe, pin-point coarctation with a minimal double-oblique diameter of 4 × 4 mm just distal to the origin of the left subclavian artery. Furthermore, CTA revealed hypertrophic intercostal, internal mammary, and scapular arteries (Figures 2C–E), a levoatriocardinal vein (LACV) connecting the truncus brachiocephalicus with the left atrium (Figure 2F), and an extensive intrathoracic collateral network with a large

paravertebral aneurysm (29 × 24 × 24 mm) of one of the collateral arteries arising from the left subclavian artery (Figures 3A, C, E). In addition, a high multi-vessel coronary plaque burden, including a significant proximal left anterior descending lesion, was documented. Given persistent hypertension, treatment with a dihydropyridine calcium channel blocker (amlodipine) and an angiotensin-converting enzyme inhibitor (lisinopril) was initiated.

A three-dimensional (3D) print of the heart, aorta, and collateral vessels, including the aneurysm, was constructed to facilitate a better understanding of the complex anatomy. The patient was discussed in the adult congenital heart team; considering the patient's age and the perioperative risk of aortic surgery in the presence of extensive and aneurysmatic collaterals, we pursued a primarily percutaneous strategy. Invasive pressure measurements revealed systolic blood pressures proximal and distal to the CoA of 178 and 95 mmHg, respectively. This resulted in a gradient of 83 mmHg, warranting the indication for intervention. To treat the coarctation, a covered stent was implanted (Figures 4A, B) with good angiographic results and alleviation of the pressure gradient. Figure 4C shows the angiography of the collateral artery aneurysm that was subjected to conservative treatment. Coronary angiography confirmed a significant stenotic lesion in the proximal left anterior descending artery (80–90% stenosis), for which a percutaneous coronary intervention (PCI) with stent implantation was performed. The other coronary arteries showed non-significant atherosclerotic lesions. The post-operative period was uneventful, dual antiplatelet therapy with acetylsalicylic acid and clopidogrel was started, and amlodipine was discontinued. Two months later, losartan was discontinued due to the normalization of blood pressures to 100–125/70 mmHg.

Due to a reduced kidney function (creatinine 137 μmol/L, estimated glomerular filtration rate of 36 ml/min/1.73 m²) secondary to endocarditis-associated glomerulonephritis, statin therapy was not started immediately after PCI. Short-term treatment with oral prednisone was pursued by the IEAGN, and a statin could be initiated after the recovery of the renal function.

The patient was seen for a follow-up at the outpatient clinic 4 months after the procedure. She was normotensive and reported to be doing well, experiencing no functional limitations during daily activities. Transthoracic echocardiography showed stable dimensions of the ascending aorta, moderate insufficiency of the aortic valve, and preserved left ventricular function. The peak flow velocity over the coarctation was measured as 1.7 m/s, corresponding to a derived pressure gradient of 12 mmHg. CTA confirmed stable aortic dimensions and good position and deployment of the stent at the CoA site. The large collateral artery aneurysm no longer showed any contrast opacification, likely reflecting spontaneous thrombosis secondary to the diminished collateral flow after the alleviation of the coarctation (Figures 3B,D,F).

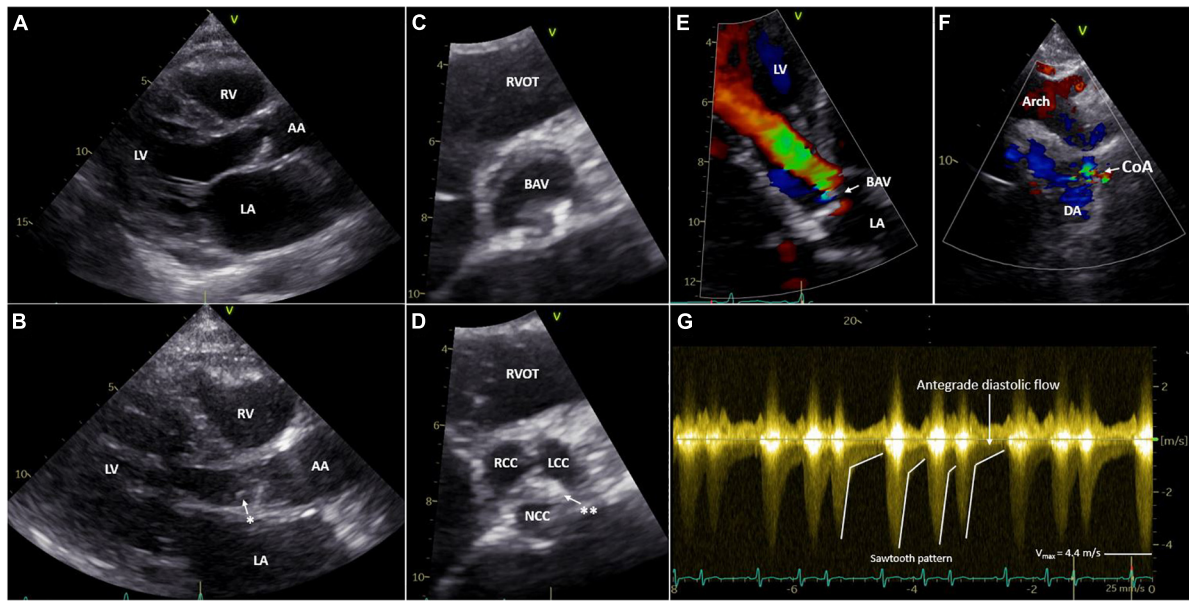


FIGURE 1
 Transthoracic echocardiography of the aortic valve (A–E) and CoA (F,G). Parasternal long-axis view of the aortic valve open (A) and closed with a mobile mass on the non-coronary cusp (B). Parasternal short-axis view of BAV open (C) and closed (D). Apical five-chamber view of the BAV with moderate aortic regurgitation with color doppler (E). Suprasternal view of the aortic arch and CoA with color doppler (F). Sawtooth pattern on echo doppler of the CoA (G). LV, left ventricle; RV, right ventricle; LA, left atrium; AA, ascending aorta; DA, descending aorta; RVOT, right ventricular outflow tract; BAV, bicuspid aortic valve; RCC, right coronary cusp; LCC, left coronary cusp; NCC, non-coronary cusp; Arch, aortic arch; CoA, coarctation of the aorta, *Mobile mass; **raphe between the NCC and LCC.

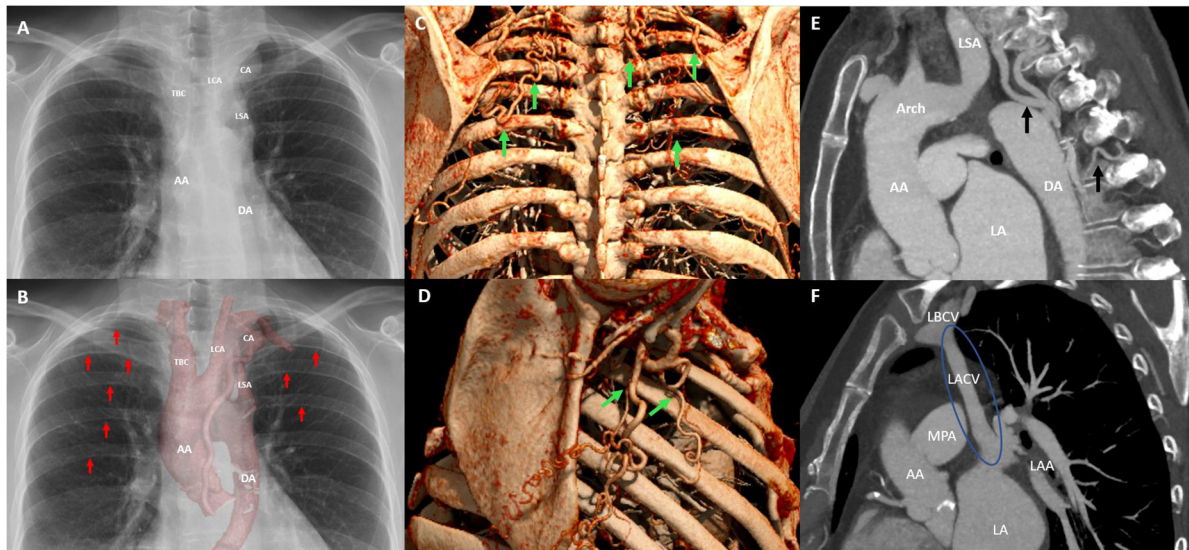


FIGURE 2
 Postero-anterior chest radiograph illustrates the aneurysmatic collateral artery projecting over the apical–medial aspect left upper lobe and mediastinal silhouette (A). In addition, the postero-anterior chest radiograph with multifocal rib notching (red arrows) and projection of the cinematic 3D-reconstruction of the thoracic aorta illustrating the CoA and associated aneurysmatic collateral artery (B). Oblique sagittally reformatted maximum intensity projection (MIP) cinematic 3D-rendering of thoracic CTA shows hypertrophic collateral arteries posterior (C) and lateral (D) alongside the chest wall, indicated by green arrows. The sagittal CTA image illustrating collateral arteries and hypertrophic intercostal arteries inserting into the descending aorta (E), and the levoatriocardinal vein (F). AA, ascending aorta; DA, descending aorta; CA, aneurysmatic collateral artery; LSA, left subclavian artery; LCA, left carotid artery; TBC, truncus brachiocephalicus; Arch, aortic arch; LSA, left subclavian artery; LA, left atrium; LACV, levoatriocardinal vein; LBCV, left brachiocephalic vein.

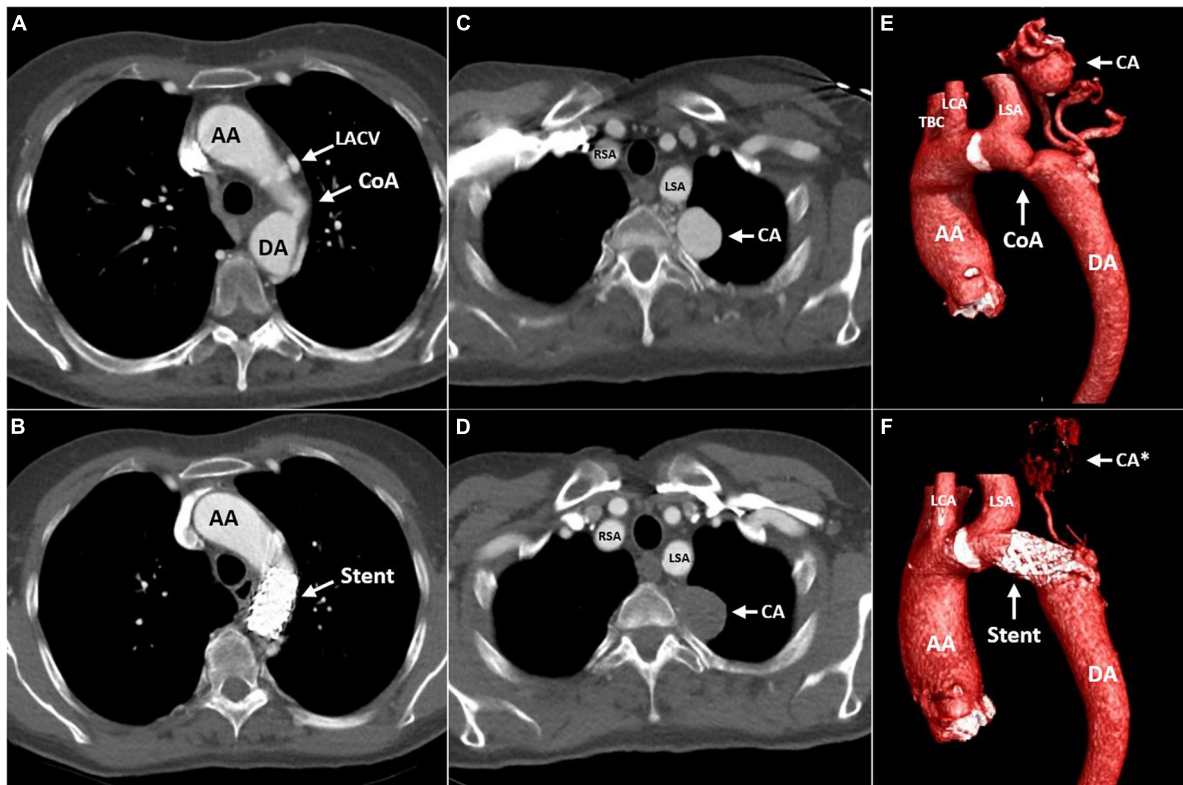


FIGURE 3
 Computed tomography (CT) angiography of the aorta before (A,C,E) and 4 months after (B,D,F) implantation of a covered stent across the CoA. The transverse plane is at the level of the CoA (A,B) and the level of the left paravertebral aneurysmatic collateral artery (C,D). Cinematic 3D reconstruction of the thoracic aorta, illustrating the CoA and associated aneurysmatic collateral artery (E,F). AA, ascending aorta; DA, descending aorta; LACV, levoatriocardinal vein; CoA, coarctation of the aorta; Stent, covered stent in the coarctation zone; CA, aneurysmatic collateral artery; CA*, location of the aneurysmatic collateral artery; RSA, right subclavian artery; LSA, left subclavian artery; LCA, left carotid artery; TBC, truncus brachiocephalicus.

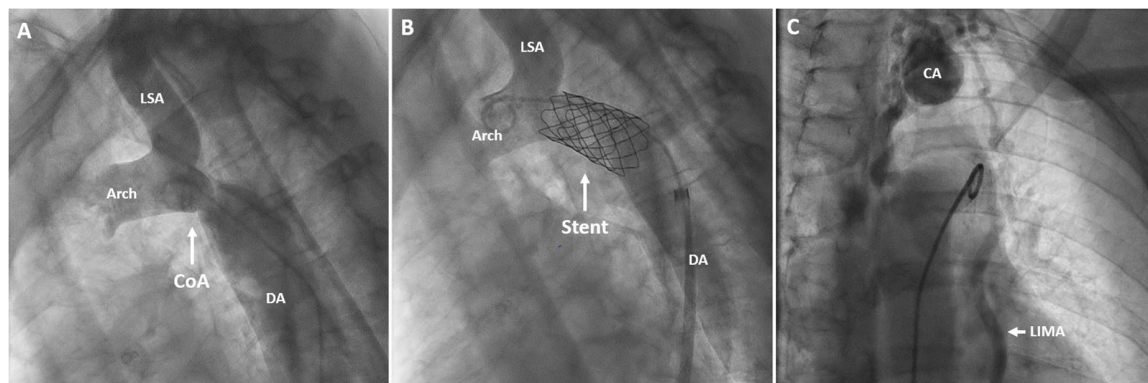


FIGURE 4
 Angiography of the aortic arch and descending aorta before (A) and after stent implantation (B). Angiography of the collateral artery aneurysm (C). DA, descending aorta; CoA, coarctation of the aorta; Stent, covered stent in the coarctation zone; CA, collateral aneurysm; LSA, left subclavian artery; LIMA, left internal mammary artery; Arch, aortic arch.

Furthermore, magnetic resonance angiography (MRA) was performed to screen for cerebral aneurysms that are often associated with CoA in adults. A small aneurysm in the

proximal right anterior cerebral artery (A1 segment) with a maximum diameter of 2.5 mm was revealed. After 6 months, the MRA was repeated, showing stable dimensions and

ensuing a conservative management strategy including periodic follow-up.

Currently, 20 months after the initial presentation, the patient is doing well with no signs of adenocarcinoma recurrence or anginal symptoms. Her blood pressure is 125/75 mmHg without antihypertensive medication. The patient remains under annual follow-up at our outpatient clinic.

Discussion

Coarctation of the aorta is a congenital defect that may be caused by the constriction of the ductal tissue in the area of the ductus arteriosus, often associated with multiple other congenital heart anomalies and vascular comorbidities. Recognition of a CoA early in life is important to prevent potential complications since the natural course of an untreated CoA can lead to a plethora of long-term sequelae (23). Fortunately, hemodynamically important CoA is usually diagnosed prenatally or early after birth (23). However, unrecognized CoA can initially remain undiagnosed for many years, particularly when a sufficient collateral artery network is present (14, 24, 25). During adulthood, diagnosis is often made in the work-up of systemic hypertension or a heart murmur (2).

Here, we describe the case of a patient with a late diagnosis of CoA at the age of 59 in the setting of a late complication of an associated bicuspid aortic valve, namely *Streptococcus bovis* endocarditis.

The case is illustrative of several typical features of CoA. The patient's ECG was suggestive of left ventricular hypertrophy, a consequence of the chronically increased afterload and systemic arterial hypertension. Transthoracic echocardiography revealed typical antegrade diastolic flow in the descending thoracic aorta with a "saw tooth" pattern (2, 26). In adults, the location opposite the ductus/ligamentum arteriosus is the most commonly encountered location of CoA (5, 6, 27). Hypertrophic intercostal, internal, mammary, and scapular arteries are illustrative of the typical compensatory collateral flow in adults with untreated CoA (7). The LACV is a rare pulmonary-systemic connection that most frequently connects the left atrium and the brachiocephalic veins (28). LACV predominantly presents in left-heart obstructive lesions (28–30). Several cases of LACV in the presence of CoA are described (28, 30–35). Bilateral posterior rib notching is a pathognomonic radiological phenomenon caused by tortuous dilation of the third to eighth intercostal arteries (36). As illustrated by this case, a bicuspid aortic valve can be diagnosed in up to 85% of patients with CoA (2, 3, 7–9). This patient presented with bacterial endocarditis as a late complication of a bicuspid valve (7). Long-standing and treatment-resistant upper extremity hypertension is an important yet often unrecognized physical finding in patients with CoA (2, 3).

Furthermore, CTA showed extensive coronary plaque burden. Although the patient's age, pre-existent hypercholesterolemia, and former cigarette smoking contributed to the natural risk of atherosclerosis, the prevalence of premature CAD is increased in patients with CoA (37, 38). However, it is not clear whether CoA itself is an independent risk factor for CAD (37). In addition, studies show that increased cardiovascular risk does not directly decline to the level of the general population following interventional treatment of CoA (39). Therefore, secondary prevention is essential in preventing and halting the progression of CAD (40, 41). Although statin treatment in patients with CoA affects serum total cholesterol and LDL-cholesterol levels, it does not result in a lower risk of cardiovascular mortality or morbidity (42). Hence, targeting all the modifiable cardiovascular risk factors, including effective blood pressure regulation, remains highly important.

Although arterial aneurysms are frequently associated with CoA, they are seldom large. However, large aneurysms of collateral arteries are more prevalent in elderly patients with CoA (43). Several case reports demonstrate that, for instance, spinal and intercostal artery aneurysms are at risk for rupture, potentially with fatal outcomes (44). However, current guidelines fail to address the management of these aneurysms (45–47). Therefore, the treatment strategy was determined by the expert opinion of the multidisciplinary adult congenital heart disease team. Treatment options included surgical correction, percutaneous treatment (i.e., coiling), or re-evaluation after initial percutaneous treatment of the CoA. The rationale behind the latter was that alleviating the obstruction caused by the CoA would improve aortic hemodynamics and, in turn, diminish collateral blood flow. Subsequently, this could result in blood stasis in the aneurysmatic sac with spontaneous thrombosis. A similar treatment approach was previously described by Judicel and colleagues (48). However, in that case, blood flow in the aneurysm persisted (which was 33 mm in diameter), preventing spontaneous thrombosis despite successful treatment of the CoA. Complete exclusion of the aneurysm from the circulation was subsequently achieved by percutaneously delivered local injection of thrombin and glue. In our case, however, successful endovascular treatment of the CoA was sufficient to result in a reduction of collateral flow and thrombosis of the aneurysm, as illustrated by CTA imaging 4 months after the procedure.

In the described case, a CTA-based 3D print was constructed to improve the understanding of complex anatomy and spatial relations. Ultimately, this was helpful in supporting the treatment decision process and peri-procedural planning. In accordance with our experience, a systematic review by Lau et al. concluded that a 3D model improves the interpretation of the anatomy in patients with congenital heart disease (49).

Furthermore, 3D-printing can be useful for preoperative planning and medical and patient education (49).

In conclusion, this case illustrates that CoA with multiple associated defects can remain undiagnosed until late adulthood in the presence of well-developed collateral arteries. As previously reported, one should be aware of CoA in adults with long-standing hypertension. Furthermore, this case demonstrates that a successful percutaneous management strategy of CoA can reduce collateral arterial flow, thus providing a valid treatment option for even exceptionally large collateral artery aneurysms.

Data availability statement

The raw data supporting the conclusions of this article will be made available by the authors, without undue reservation.

Ethics statement

All procedures performed involving the human participant were in accordance with the ethical standards of the institutional and/or national research committee and with the 1964 Helsinki Declaration and its later amendments or comparable ethical standards. The patient provided consent for the publication of this case report. Written informed consent was obtained from the individual(s) for the publication of

any potentially identifiable images or data included in this article.

Author contributions

DV drafted the manuscript. DV and JS created the figures. AE edited the manuscript. All authors were involved in the conceptualization, analysis, and interpretation of the diagnostic data and the management strategy described in the manuscript, and approved, and co-edited the manuscript for submission in its current form.

Conflict of interest

The authors declare that the research was conducted in the absence of any commercial or financial relationships that could be construed as a potential conflict of interest.

Publisher's note

All claims expressed in this article are solely those of the authors and do not necessarily represent those of their affiliated organizations, or those of the publisher, the editors and the reviewers. Any product that may be evaluated in this article, or claim that may be made by its manufacturer, is not guaranteed or endorsed by the publisher.

References

- Rao P. Coarctation of the aorta. *Curr Cardiol Rep.* (2005) 7:425–34. doi: 10.1007/s11886-005-0060-0
- Doshi A, Chikkabyrappa S. Coarctation of aorta in children. *Cureus.* (2018) 10:e3690. doi: 10.7759/cureus.3690
- Law M, Tivakaran V. *Coarctation of the Aorta*. Treasure Island, FL: StatPearls (2022).
- Kau T, Sinzig M, Gasser J, Lesnik G, Rabitsch E, Celedin S, et al. Aortic development and anomalies. *Semin Intervent Radiol.* (2007) 24:141–52. doi: 10.1055/s-2007-980040
- Hanneman K, Newman B, Chan F. Congenital variants and anomalies of the aortic arch. *Radiographics.* (2017) 37:32–51. doi: 10.1148/rg.2017160033
- Elzenga N, Gittenberger-de Groot A. Localised coarctation of the aorta. An age dependent spectrum. *Br Heart J.* (1983) 49:317–23. doi: 10.1136/hrt.49.4.317
- Agasthi P, Pujari S, Tseng A, Graziano J, Marcotte F, Majdalany D, et al. Management of adults with coarctation of aorta. *World J Cardiol.* (2020) 12:167–91. doi: 10.4330/wjc.v12.i5.167
- Becker A, Becker M, Edwards J. Anomalies associated with coarctation of aorta: particular reference to infancy. *Circulation.* (1970) 41:1067–75. doi: 10.1161/01.CIR.41.6.1067
- Teo L, Cannell T, Babu-Narayan S, Hughes M, Mohiaddin R. Prevalence of associated cardiovascular abnormalities in 500 patients with aortic coarctation referred for cardiovascular magnetic resonance imaging to a tertiary center. *Pediatr Cardiol.* (2011) 32:1120–7. doi: 10.1007/s00246-011-9981-0
- Bhatt A, Lantin-Hermoso M, Daniels C, Jaquiss R, Landis B, Marino B, et al. Isolated coarctation of the aorta: current concepts and perspectives. *Front Cardiovasc Med.* (2022) 9:817866. doi: 10.3389/fcvm.2022.817866
- Campbell M. Natural history of coarctation of the aorta. *Br Heart J.* (1970) 32:633–40. doi: 10.1136/hrt.32.5.633
- Pericas P, Noris Mora M, Fernandez-Palomeque C, Massot Rubio M, Grau Sepulveda A, Peral Disdier V. Aortic coarctation endarteritis: the importance of a systematic echocardiographic study. *J Cardiol Cases.* (2018) 17:56–8. doi: 10.1016/j.jccase.2017.09.005
- Dodo H, Child J. Infective endocarditis in congenital heart disease. *Cardiol Clin.* (1996) 14:383–92. doi: 10.1016/S0733-8651(05)70291-5
- Houston A, Simpson I, Pollock J, Jamieson M, Doig W, Coleman E. Doppler ultrasound in the assessment of severity of coarctation of the aorta and interruption of the aortic arch. *Br Heart J.* (1987) 57:38–43. doi: 10.1136/hrt.57.1.38
- Astengo M, Berntsson C, Johnsson A, Eriksson P, Dellborg M. Ability of noninvasive criteria to predict hemodynamically significant aortic obstruction in adults with coarctation of the aorta. *Congenit Heart Dis.* (2017) 12:174–80. doi: 10.1111/chd.12424
- Alkashkari W, Albugami S, Hijazi Z. Management of coarctation of the aorta in adult patients: state of the art. *Korean Circ J.* (2019) 49:298–313. doi: 10.4070/kcj.2018.0433
- Baumgartner H, De Backer J, Babu-Narayan S, Budts W, Chessa M, Diller G, et al. 2020 ESC guidelines for the management of adult congenital

- heart disease. *Eur Heart J.* (2021) 42:563–645. doi: 10.15829/1560-4071-2021-4702
18. Taggart N, Minahan M, Cabalka A, Cetta F, Usmani K, Ringel R, et al. Immediate outcomes of covered stent placement for treatment or prevention of aortic wall injury associated with coarctation of the aorta (COAST II). *JACC Cardiovasc Interv.* (2016) 9:484–93. doi: 10.1016/j.jcin.2015.11.038
19. Ringel R, Vincent J, Jenkins K, Gauvreau K, Moses H, Lofgren K, et al. Acute outcome of stent therapy for coarctation of the aorta: results of the coarctation of the aorta stent trial. *Catheter Cardiovasc Interv.* (2013) 82:503–10. doi: 10.1002/ccd.24949
20. Habib G, Lancellotti P, Iung B. 2015 ESC guidelines on the management of infective endocarditis: a big step forward for an old disease. *Heart.* (2016) 102:992–4. doi: 10.1136/heartjnl-2015-308791
21. Thuny F, Di Salvo G, Belliard O, Avierinos J, Pergola V, Rosenberg V, et al. Risk of embolism and death in infective endocarditis: prognostic value of echocardiography: a prospective multicenter study. *Circulation.* (2005) 112:69–75. doi: 10.1161/CIRCULATIONAHA.104.493155
22. Aksoy O, Sexton D, Wang A, Pappas P, Kourany W, Chu V, et al. Early surgery in patients with infective endocarditis: a propensity score analysis. *Clin Infect Dis.* (2007) 44:364–72. doi: 10.1086/510583
23. Liberman R, Getz K, Lin A, Higgins C, Sekhavat S, Markenson G, et al. Delayed diagnosis of critical congenital heart defects: trends and associated factors. *Pediatrics.* (2014) 134:e373–81. doi: 10.1542/peds.2013-3949
24. Leschka S, Alkadhi H, Wildermuth S. Images in cardiology. Collateral circulation in aortic coarctation shown by 64 channel multislice computed tomography angiography. *Heart.* (2005) 91:1422. doi: 10.1136/hrt.2004.05.4346
25. Steffens J, Bourne M, Sakuma H, O'Sullivan M, Higgins C. Quantification of collateral blood flow in coarctation of the aorta by velocity encoded cine magnetic resonance imaging. *Circulation.* (1994) 90:937–43. doi: 10.1161/01.CIR.90.2.937
26. Christopher A, Apfel A, Sun T, Kreutzer J, Ezon D. Diastolic velocity half time is associated with aortic coarctation gradient at catheterization independent of echocardiographic and clinical blood pressure gradients. *Congenit Heart Dis.* (2018) 13:713–20. doi: 10.1111/chd.12637
27. Abjigitova D, Mokhles M, Witsenburg M, van de Woestijne P, Bekkers J, Bogers A. Surgical repair of aortic coarctation in adults: half a century of a single centre clinical experience. *Eur J Cardiothorac Surg.* (2019) 56:1178–85. doi: 10.1093/ejcts/ezz259
28. Agarwal P, Mahani M, Lu J, Dorfman A. Levoatriocardinal vein and mimics: spectrum of imaging findings. *Am J Roentgenol.* (2015) 205:W162–71. doi: 10.2214/AJR.15.14365
29. Canan A, Aziz M, Abbara SA. Rare pulmonary-systemic connection: levoatriocardinal vein. *Radiol Cardiothorac Imaging.* (2020) 2:e190228. doi: 10.1148/ryct.2020190228
30. Tosun O, Saygi M, Kasar T, Ayyildiz P, Turkvatan A, Ergul Y, et al. A rare pathology: levoatriocardinal vein. *Turk Kardiyol Dern Ars.* (2016) 44:315–9. doi: 10.5543/tkda.2015.84404
31. Amoretti F, Cerillo A, Chiappino D. The levoatriocardinal vein. *Pediatr Cardiol.* (2005) 26:494–5. doi: 10.1007/s00246-004-9019-y
32. Patel K, Patel A, Ananthanarayanan C. Acute type A dissection, coarctation of aorta, and levoatriocardinal vein-A rare combination. *J Card Surg.* (2021) 36:3867–8. doi: 10.1111/jocs.15832
33. Bernstein H, Moore P, Stanger P, Silverman N. The levoatriocardinal vein: morphology and echocardiographic identification of the pulmonary-systemic connection. *J Am Coll Cardiol.* (1995) 26:995–1001. doi: 10.1016/0735-1097(95)00283-X
34. Gabbour M, Markl M, Robinson J, Rigsby C. 4-dimensional magnetic resonance imaging of the levoatriocardinal vein. *J Am Coll Cardiol.* (2012) 60:1291. doi: 10.1016/j.jacc.2012.01.084
35. Marini D, Agnoletti G, Pace Napoleone C. Levoatriocardinal vein and partial anomalous pulmonary vein drainage in left-sided obstructive CHDs: diagnostic and surgical implications. *Cardiol Young.* (2016) 26:811–4. doi: 10.1017/S1047951115002425
36. Ferguson E, Krishnamurthy R, Oldham S. Classic imaging signs of congenital cardiovascular abnormalities. *Radiographics.* (2007) 27:1323–34. doi: 10.1148/rg.275065148
37. Roifman I, Therrien J, Ionescu-Ittu R, Pilote L, Guo L, Kotowycz M, et al. Coarctation of the aorta and coronary artery disease: fact or fiction? *Circulation.* (2012) 126:16–21. doi: 10.1161/CIRCULATIONAHA.111.088294
38. Meijs T, Minderhoud S, Muller S, de Winter R, Mulder B, van Melle J, et al. Cardiovascular morbidity and mortality in adult patients with repaired aortic coarctation. *J Am Heart Assoc.* (2021) 10:e023199. doi: 10.1161/JAHA.121.023199
39. Krieger E, Stout K. The adult with repaired coarctation of the aorta. *Heart.* (2010) 96:1676–81. doi: 10.1136/hrt.2010.195065
40. Pickard S, Gauvreau K, Gurvitz M, Gagne J, Opatowsky A, Jenkins K, et al. A national population-based study of adults with coronary artery disease and coarctation of the aorta. *Am J Cardiol.* (2018) 122:2120–4. doi: 10.1016/j.amjcard.2018.08.051
41. Fedchenko M, Mandalenakis Z, Dellborg H, Hulstberg-Olsson G, Bjork A, Eriksson P, et al. Cardiovascular risk factors in adults with coarctation of the aorta. *Congenit Heart Dis.* (2019) 14:549–58. doi: 10.1111/chd.12785
42. Luijendijk P, Bouma B, Vriend J, Groenink M, Vliegen H, de Groot E, et al. Beneficial effect of high dose statins on the vascular wall in patients with repaired aortic coarctation? *Int J Cardiol.* (2014) 176:40–7. doi: 10.1016/j.ijcard.2014.06.016
43. Braimbridge M, Yen A. Coarctation in the elderly. *Circulation.* (1965) 31:209–18. doi: 10.1161/01.CIR.31.2.209
44. Fernandez Gonzalez L, Garcia San Roman K, Blanco Mata R, Arriola Meabe J, Astorga Burgo J, Alcibar Villa J. Percutaneous stent placement to treat coarctation of aorta due to atresia in adult patients. *Rev Esp Cardiol.* (2016) 69:1109–11. doi: 10.1016/j.rec.2016.05.019
45. Aoun S, El Ahmadieh T, Soltanolkotabi M, Ansari S, Marden F, Batjer H, et al. Ruptured spinal artery aneurysm associated with coarctation of the aorta. *World Neurosurg.* (2014) 81:e17–22. doi: 10.1016/j.wneu.2012.07.027
46. Heifetz S, Zeichner M, Minkowitz S. Sudden death from ruptured intercostal artery aneurysm. A late complication of thoracotomy. *Arch Surg.* (1975) 110:1253–4. doi: 10.1001/archsurg.1975.01360160091019
47. Sundram-Noveland S, Appleton D, Screation N, Davies R, Chilvers E. Spontaneous rupture of an intercostal artery aneurysm during air flight. *Thorax.* (2008) 63:294. doi: 10.1136/thx.2006.074690
48. Judicael A, Vouche M, Denaeghel D, Murgo S, Ferreira J. Endovascular management of a rare complication of an aortic coarctation. *Radiol Case Rep.* (2018) 13:614–7. doi: 10.1016/j.radcr.2018.02.020
49. Lau I, Sun Z. Three-dimensional printing in congenital heart disease: a systematic review. *J Med Radiat Sci.* (2018) 65:226–36. doi: 10.1002/jmrs.268