



**Universiteit  
Leiden**  
The Netherlands

## **A phase Ib/II study of regorafenib and paclitaxel in patients with beyond first-line advanced esophagogastric carcinoma (REPEAT)**

Stroes, C.I.; Schokker, S.; Khurshed, M.; Woude, S.O. van der; Mathot, R.A.A.; Slingerland, M.; ... ; Laarhoven, H.W.M. van

### **Citation**

Stroes, C. I., Schokker, S., Khurshed, M., Woude, S. O. van der, Mathot, R. A. A., Slingerland, M., ... Laarhoven, H. W. M. van. (2022). A phase Ib/II study of regorafenib and paclitaxel in patients with beyond first-line advanced esophagogastric carcinoma (REPEAT). *Therapeutic Advances In Medical Oncology*, 14, 1-15.  
doi:10.1177/17588359221109196

Version: Publisher's Version

License: [Creative Commons CC BY-NC 4.0 license](https://creativecommons.org/licenses/by-nc/4.0/)

Downloaded from: <https://hdl.handle.net/1887/3566782>

**Note:** To cite this publication please use the final published version (if applicable).

# A phase Ib/II study of regorafenib and paclitaxel in patients with beyond first-line advanced esophagogastric carcinoma (REPEAT)

Charlotte I Stroes<sup>1</sup>, Sandor Schokker, Mohammed Khurshed, Stephanie O van der Woude, Ron AA Mathôt, Marije Slingerland, Judith de Vos-Geelen, Massimo Zucchetti, Cristina Matteo, Erik van Dijk, Bauke Ylstra, Victor Thijssen, Sarah Derks, Tesfay Godefa, Willemieke Dijksterhuis, Gerben E Breimer, Otto M van Delden, Rob HA Verhoeven, Sybren L Meijer, Maarten F Bijlsma and Hanneke WM van Laarhoven<sup>2</sup>

## Abstract

**Purpose:** Regorafenib monotherapy, a multikinase inhibitor of angiogenesis, tumor microenvironment, and tumorigenesis, showed promising results in gastric cancer. We aimed to assess the tolerability of regorafenib and paclitaxel in patients with advanced esophagogastric cancer (EGC) refractory to first-line treatment, and explore potential biomarkers.

**Methods:** Patients received paclitaxel (80 mg/m<sup>2</sup>) on days 1, 8, and 15 of a 28-day cycle and regorafenib (80/120/160 mg) on days 1–21 in the dose-escalation cohort, and the maximum-tolerated dose (MTD) in the dose-expansion cohort. Exploratory, overall survival (OS) and progression-free survival (PFS) were compared to a propensity-score matched cohort receiving standard second-/third-line systemic treatment. Paclitaxel pharmacokinetics were assessed using samples from day 1 (D1) and day 15 (D15). We performed enzyme-linked immunosorbent assay measurements of galectin-1, RNA sequencing, and shallow whole-genome sequencing of metastatic tumor biopsies for biomarker analyses.

**Results:** In the dose-escalation cohort ( $n=14$ ), the MTD of regorafenib was 120 mg. In all, 34 patients were enrolled in the dose-expansion cohort. Most common toxicities (all grades; grade  $\geq 3$ ) were fatigue (79%; 4%) and sensory neuropathy (63%; 4%). Best responses achieved were partial response (28%) and stable disease (54%). Median OS and PFS were 7.8 and 4.2 months, respectively (median follow-up: 7.8 months). OS ( $p=0.08$ ) and PFS ( $p=0.81$ ) were not significantly improved compared to the matched cohort. Paclitaxel concentrations were significantly increased with regorafenib (D15) compared with paclitaxel only (D1;  $p<0.05$ ); no associations were observed with toxicity or efficacy. An increase in circulating galectin-1 compared to baseline was associated with shorter OS ( $p<0.01$ ). Enrichment of angiogenesis-related gene expression was observed in short survivors measured by RNA sequencing. Chromosome 19q13.12-q13.2 amplification was associated with shorter OS ( $p=0.02$ ) and PFS ( $p=0.02$ ).

**Conclusion:** Treatment with regorafenib and paclitaxel is tolerable and shows promising efficacy in advanced EGC refractory to first-line treatment. Galectin-1 and chromosome 19q13.12-q13.2 amplification could serve as negative predictive biomarkers for treatment response.

**Registration:** Clinicaltrials.gov, NCT02406170, <https://clinicaltrials.gov/ct2/show/NCT02406170>

**Keywords:** angiogenesis, biomarkers, esophagogastric cancer, paclitaxel pharmacokinetics, palliative chemotherapy, targeted therapy

*Ther Adv Med Oncol*

2022, Vol. 14: 1–15

DOI: 10.1177/  
17588359221109196

© The Author(s), 2022.  
Article reuse guidelines:  
[sagepub.com/journals-](https://sagepub.com/journals-permissions)  
permissions

Correspondence to:

Charlotte I Stroes  
Hanneke WM van  
Laarhoven

Department of Medical  
Oncology, Amsterdam  
UMC, University of  
Amsterdam, Cancer  
Center Amsterdam,  
Meibergdreef 9,  
Amsterdam, 1105 AZ, The  
Netherlands.

Laboratory for  
Experimental Oncology  
and Radiobiology (LEXOR),  
Center for Experimental  
and Molecular Medicine  
(CEMM), Amsterdam UMC,  
University of Amsterdam,  
Cancer Center  
Amsterdam, Amsterdam,  
The Netherlands.

[c.i.stroes@amsterdamumc.nl](mailto:c.i.stroes@amsterdamumc.nl);  
[h.vanlaarhoven@amsterdamumc.nl](mailto:h.vanlaarhoven@amsterdamumc.nl)

Sandor Schokker  
Department of Medical  
Oncology, Amsterdam  
UMC, University of  
Amsterdam, Cancer  
Center Amsterdam,  
Amsterdam, The  
Netherlands

Laboratory for  
Experimental Oncology  
and Radiobiology (LEXOR),  
Center for Experimental  
and Molecular Medicine  
(CEMM), Amsterdam UMC,  
University of Amsterdam,  
Cancer Center  
Amsterdam, Amsterdam,  
The Netherlands

Stephanie O van der  
Woude  
Willemieke Dijksterhuis  
Department of Medical  
Oncology, Amsterdam  
UMC, University of  
Amsterdam, Cancer  
Center Amsterdam,  
Amsterdam, The  
Netherlands

Mohammed Khurshed  
Department of Medical  
Oncology, Amsterdam  
UMC, University of  
Amsterdam, Cancer  
Center Amsterdam,  
Amsterdam, The  
Netherlands

Received: 20 January 2022; revised manuscript accepted: 6 June 2022.

Department of Medical  
Biology, Amsterdam UMC,  
University of Amsterdam,  
Amsterdam, The  
Netherlands

**Ron AA Mathôt**

Department of Clinical  
Pharmacology, Amsterdam  
UMC, University of  
Amsterdam, Amsterdam,  
The Netherlands

**Marije Slingerland**

Department of Medical  
Oncology, Leiden University  
Medical Center, Leiden,  
The Netherlands

**Judith de Vos-Geelen**

Department of Internal  
Medicine, Division of  
Medical Oncology, GROW-  
School for Oncology  
and Development  
Biology, Maastricht  
UMC+, Maastricht, The  
Netherlands

**Massimo Zucchetti  
Cristina Matteo**

Department of Oncology,  
Laboratory of Cancer  
Pharmacology, Istituto di  
Ricerche Farmacologiche  
Mario Negri IRCCS, Milan,  
Italy

**Erik van Dijk**

**Bauke Ylstra**

Department of Pathology,  
Cancer Center Amsterdam,  
Amsterdam UMC, VU  
University Medical  
Center, Amsterdam, The  
Netherlands

**Victor Thijssen**

Department of Radiation  
Oncology, Amsterdam  
UMC, VU University Medical  
Center, Amsterdam, The  
Netherlands

**Sarah Derks**

**Tesfay Godefa**

Department of Medical  
Oncology, Cancer Center  
Amsterdam, Amsterdam  
UMC, VU University Medical  
Center, Amsterdam, The  
Netherlands

Oncode Institute,  
Amsterdam, The  
Netherlands

**Gerben E Breimer**

**Sybren L Meijer**

Department of Pathology,  
Amsterdam UMC,  
University of Amsterdam,  
Amsterdam, The  
Netherlands

**Otto M van Delden**

Department of Radiology  
and Nuclear Medicine,  
Amsterdam UMC,  
University of Amsterdam,  
Amsterdam, The  
Netherlands

**Rob HA Verhoeven**

Department of  
Research, Netherlands  
Comprehensive Cancer  
Organization (IKNL),  
Utrecht, The Netherlands

## Introduction

Esophagogastric cancer (EGC) accounts for approximately 15% of all cancer deaths worldwide.<sup>1</sup> The majority of patients present with advanced disease and a median survival of less than 1 year.<sup>2</sup> First-line chemotherapy has demonstrated benefit over best supportive care while maintaining the patients' quality of life.<sup>3-6</sup> However, the majority of patients do not achieve response or demonstrate progression of disease within a few months of first-line treatment.<sup>2</sup> As the gain in survival from second-line treatment is modest, there is an unmet need to improve beyond first-line treatment.<sup>7</sup>

In the pathogenesis of EGC, angiogenesis has been identified as a key feature associated with adverse outcomes.<sup>8</sup> Regorafenib is an oral small-molecule tyrosine-kinase inhibitor, simultaneously targeting angiogenesis, tumorigenesis, and the tumor microenvironment. By targeting multiple membrane-bound and intracellular kinases, regorafenib has demonstrated anti-angiogenic potential, as well as inhibition of tumor growth and targeting of the tumor stroma *in vivo*.<sup>9</sup> In several solid tumors refractory to prior treatment, including gastric cancer, regorafenib monotherapy has demonstrated a survival benefit, as well as increased response rates compared to best supportive care only.<sup>9-14</sup> Similarly, efficacy of angiogenesis inhibition has previously been demonstrated in second-line advanced EGC using ramucirumab monotherapy, a monoclonal antibody against vascular endothelial growth factor (VEGF) receptor-2.<sup>15</sup> It has been suggested that the combination of paclitaxel and ramucirumab shows superior effects compared to monotherapy.<sup>16</sup> Although no direct comparison between paclitaxel with ramucirumab compared to ramucirumab monotherapy has been made, overall survival (OS) in the RAINBOW study suggests that the combination of angiogenesis inhibition and paclitaxel may be beneficial.<sup>17</sup> As the absolute gain in survival from ramucirumab with paclitaxel was still limited, we hypothesized that the combination of paclitaxel and regorafenib could result in increased efficacy compared to paclitaxel and ramucirumab, as the tyrosine-kinase inhibitor regorafenib not only targets angiogenesis, but also targets tumorigenesis and the tumor microenvironment.<sup>16</sup>

Although previous studies demonstrated safety and response from combining regorafenib with

a fluoropyrimidine and platinum-based compound in refractory metastatic colorectal cancer,<sup>18</sup> overall severe toxicities have been described for the combination of tyrosine-kinase inhibitors with cytotoxic chemotherapies.<sup>19-21</sup> Therefore, we first performed a phase I study with a dose-escalation cohort to assess the toxicity and the maximum-tolerated dose (MTD) of regorafenib.<sup>21</sup> Subsequently, we investigated the tolerability and the first signs of efficacy of this combination in the phase II dose-expansion cohort.

Anti-angiogenic treatments may influence drug bioavailability. Therefore, we also evaluated the effect of regorafenib administration on paclitaxel pharmacokinetics.<sup>22</sup> To identify the resistance mechanisms and other prognostic or predictive biomarkers, we assessed galectin-1 as a biomarker, previously associated as a biomarker of aberrant tumor vasculature,<sup>23</sup> as well as other potential exploratory biomarker analyses through RNA expression and DNA copy number analyses of metastatic lesions.

## Methods

### Patient eligibility criteria

Eligible patients were  $\geq 18$  years and had pathologically confirmed metastatic gastric or esophageal adenocarcinomas, refractory to prior cytotoxic treatment including a fluoropyrimidine and platinum compound. Key inclusion criteria were an Eastern Cooperative Oncology Group score of 0/1, adequate bone marrow, renal, and hepatic functions, no suspected brain metastases, and no significant cardiac- or interstitial lung disease (Supplemental Appendix 1.1).

### Study design

This was a prospective, multicenter, phase Ib/II dose-escalation study (NCT02406170) with a dose-expansion cohort of regorafenib and paclitaxel in patients with EGC refractory to first- or second-line treatment. Dose escalation was conducted using a standard 3 + 3 design<sup>24</sup> to assess the optimal dose of regorafenib from days 1-21 of a 28-day cycle (dose level 1:80 mg, 2:120 mg, and 3:160 mg), in combination with paclitaxel 80 mg/m<sup>2</sup> on days 1, 8, and 15. Regorafenib was administered from days 2-22 in cycle 1 to allow for pharmacokinetic analyses in both cohorts. Dose escalation was permitted if patients were treated

with  $\geq 75\%$  of the assigned dose for 28 days and completed the safety evaluations (dose-escalation rules in Supplemental Table 1). In the dose-expansion cohort, patients received the established MTD of regorafenib on days 1–21.

#### *Dose modifications for toxicity*

Toxicity was measured using National Cancer Institute Common Terminology Criteria for Adverse Events version 4.3. Dose-limiting toxicity (DLT) was defined as grade  $\geq 3$  non-hematological toxicity, grade  $\geq 3$  thrombocytopenia, grade  $\geq 3$  infection, or treatment delay of  $\geq 2$  weeks due to treatment-related adverse events. Dose reductions were performed as per the treating physician's judgment, using the de-escalation rules specified in the protocol (Supplemental Appendices 1.2 and 1.3).

#### *Study endpoints and statistics*

The primary objective of this study was to determine the MTD of regorafenib in the dose-escalation cohort and to assess the tolerability of regorafenib with paclitaxel as treatment of patients with EGC refractory to first- or second-line treatment in the dose-expansion cohort. Secondary endpoints were response, OS, and progression-free survival (PFS). Exploratory endpoints were a comparison of OS and PFS with propensity-score matching, paclitaxel pharmacokinetics in relation to safety and survival, and exploratory analyses to identify biomarkers and resistance mechanisms using enzyme-linked immunosorbent assay (ELISA) measurements, RNA expression, and DNA copy number aberrations in relation to response and survival.

As no clinical data are available on the effect of regorafenib on biomarkers and paclitaxel pharmacokinetics, we extrapolated results from pharmacokinetic studies. We assumed an effect size of 0.8 to achieve a power of 80%, which resulted in 26 patients required in the dose-expansion cohort. Accounting for the possibility that a second biopsy could not be performed in 25% of patients, 33 patients were required for inclusion in the dose-expansion cohort. Analyses included all patients who received at least one dose of both study drugs. SPSS Statistics for Windows version 26.0 (IBM Corp., Armonk, NY, USA) was used for statistics. All tests were two-sided, with  $p < 0.05$  considered as statistically significant.

*Efficacy.* The response was measured according to the RECIST 1.1 criteria.<sup>25</sup> The overall response rate (ORR) was defined as the percentage of patients who demonstrated a complete response (CR) or partial response (PR); disease control rate (DCR) was defined as the percentage of patients who demonstrated CR, PR, or stable disease (SD).

OS and PFS were estimated using Kaplan–Meier analyses, measured from the day of drug administration until documented death of any cause or progression, respectively. Study patients were matched to patients from the Netherlands Cancer Registry (NCR) in a 1:2 ratio using propensity-score matching. Patients were matched on gender, age, performance status, primary tumor location, histological subtype, number of metastases, prior treatment (floropyrimidine, platinum, taxane, trastuzumab), time between primary diagnosis and start of palliative treatment or progression, using a logistic regression model. Matching was performed using the nearest neighbor technique. The within-pair difference was minimized by setting a caliper of 0.20 of the standard deviation of the logit of the propensity score. After matching, the balance per item between the groups was assessed by the standardized mean difference. Finally, survival was compared using a Cox proportional hazards model (Supplemental Appendix 1.4).

*Paclitaxel pharmacokinetics.* For pharmacokinetic analyses, plasma samples were obtained on days 1 and 15 in cycle 1, before paclitaxel administration at  $t=0$ , and 0.5, 1, 1.5, 3, 5, 8, and 24 h after infusion (Supplemental Appendix 1.5). Paclitaxel was extracted from plasma by protein precipitation after the addition of paclitaxel-d5 as an internal standard. Paclitaxel was analyzed using liquid chromatography-mass spectrometry with a detection limit of 1 ng/mL.<sup>26</sup> Concentration *versus* time data were elaborated according to non-compartmental pharmacokinetic analysis for intravenous infusion.<sup>27</sup> Exploratory analyses were performed on all patients receiving 120 mg regorafenib: dose-expansion cohort ( $N=34$ ) and dose-escalation cohort ( $N=7$ ). Statistical testing was performed with a paired Wilcoxon test for nonparametric data and paired t-tests for normally distributed data. Correlations with efficacy or safety were analyzed using Spearman's rho correlation.

**Maarten F Bijlsma**  
Laboratory for Experimental Oncology and Radiobiology (LEXOR), Center for Experimental and Molecular Medicine (CEMM), Amsterdam UMC, University of Amsterdam, Cancer Center Amsterdam, Amsterdam, The Netherlands  
Oncode Institute, Meibergdreef 9, 1105AZ Amsterdam, The Netherlands  
\*Willemieke Dijksterhuis now affiliated to Department of Research, Netherlands Comprehensive Cancer Organization (IKNL), Utrecht, The Netherlands

*Exploratory biomarker analyses.* Galectin-1 levels were determined using the Human Galectin-1 Quantikine ELISA kit (R&D systems Europe, Ltd., Abingdon, UK) in duplicate from serum samples obtained on day 1 and day 15. Galectin-1 ratios were calculated by dividing the on-treatment concentration by the baseline concentration. Survival between patients with decreasing (ratio < 1.0) and increasing (ratio > 1.0) levels of galectin-1 were compared using a Cox proportional hazards model.

For RNA expression and genome-wide DNA copy number analysis, fresh-frozen biopsies from metastatic lesions were obtained in the dose-expansion cohort on day 1 and day 15 of cycle 1. RNA and DNA were isolated using the RNeasy Mini Kit (QIAGEN AllPrep DNA/RNA/miRNA) following the manufacturer's protocol. For DNA copy number analyses, fresh-frozen biopsies were unavailable for three patients, and formalin-fixed paraffin-embedded tumor samples were used instead (metastatic biopsies  $n=2$ ; primary tumor  $n=1$ ) using the DNA FFPE Tissue kit (QIAGEN, Hilden, Germany).

RNA expression analyses were performed by RNA sequencing on an Illumina HiSeq 4000, with a single read consisting of 50 bp and 100 million reads per sample. Data were quality controlled using FastQC. Reads were aligned to the human reference genome (NCBI37/hg19) using STAR v2.7.1 and annotated with Gencode v32. The gene set enrichment analyses platform<sup>28</sup> and the R2 genome analysis and visualization platform (<http://r2.amc.nl>) were used to identify the differential expression of hallmark pathways (MSigDB, 2019) between baseline and on-treatment samples and short ( $\leq$ median OS) versus long survivors ( $>$ median OS). A gene set of previously established regorafenib targets was used, based on previously published literature.<sup>29</sup> Immune cell deconvolution was performed using the Microenvironment Cell Populations-counter R package.<sup>30</sup> To investigate whether VEGFA was excreted by tumor cells, we performed RNA *in situ* hybridization VEGFA staining using the RNAscope® Multiplex Fluorescent Kit v2 (Advanced Cell Diagnostics, Newark, CA) according to the supplier's protocol.

Genome-wide DNA copy number analysis was performed by shallow whole-genome sequencing, as previously described.<sup>31</sup> Correction for GC- and mappability bias, dewaving and segmentation

were performed accordingly. Calling was performed by comparative genomic hybridization Call, which used the cellularity estimates from an absolute copy number estimator (Supplemental Appendix 1.7).<sup>32,33</sup> The association between survival and copy number profiles was analyzed using a two-sided log-rank test with the CGHtest package in R (version 3.4.0). To validate a chromosomal gain or loss, we assessed in R2 if a significant downregulation or upregulation of gene expression on the aberrant chromosomal region of interest was present.

## Results

### *Baseline characteristics*

In all, 48 patients were enrolled between July 2015 through November 2018 from three centers in the Netherlands: 14 patients in the dose-escalation cohort and 34 patients in the dose-expansion cohort. The first patient was enrolled on July 27, 2015 (Clinicaltrials.gov, registration number NCT02406170, registered on April 2, 2015). In all, 39 patients were men (81%). The median age of patients was 62 years [interquartile (IQR): 55–69]. The majority of patients had an adenocarcinoma (94%) located in the esophagus (50%), and received one prior line of treatment for metastatic disease (67%; Table 1).

### *Safety and tolerability*

In dose level 1 (80 mg/day,  $n=3$ ), no DLT occurred. Three patients were enrolled in dose level 2 (120 mg/day), and no DLT was observed. In dose level 3 (160 mg/day,  $n=4$ ), three grade 3 DLTs occurred in two patients; diarrhea, gamma-glutamyl transferase increase, and mucositis. Subsequently, four additional patients were enrolled in dose level 2, as one patient was not evaluable for toxicity. In dose level 2, one out of six evaluable patients experienced a DLT: hand-foot syndrome grade 3. Thus, the MTD of regorafenib in combination with paclitaxel was established at 120 mg daily on days 1–21 of each cycle.

In the entire cohort ( $N=48$ ), the median number of cycles received was four (IQR: 2–6). The median dose intensity over the first four cycles was 77% for paclitaxel and 87% for regorafenib. Patients discontinued treatment due to disease progression ( $n=39$ ), toxicity ( $n=7$ ), or at own request ( $n=2$ ).

**Table 1.** Baseline characteristics.

Characteristic	N = 48	
	No.	%
Age, years		
Median	62	
Range	[55–69]	
Sex		
Male	39	81
Female	9	19
Tumor location		
Esophagus	24	50
Junction	12	25
Stomach	12	25
Histological subtype		
Adenocarcinoma	45	94
Squamous cell carcinoma	3	6
ECOG performance status		
0	27	56
1	21	44
Disease status		
Synchronous	30	63
Metachronous	18	38
No. prior palliative lines		
1	32	67
2	16	33
Prior curative treatment		
CRT + surgery	8	17
CT + surgery	3	6
CRT only	6	13
CT only	1	2
No curative treatment	30	63
No. of metastatic sites		
1	10	21

*(Continued)***Table 1.** (Continued)

Characteristic	N = 48	
	No.	%
2	20	42
≥3	18	38
Metastatic sites		
Liver	32	67
Distant lymph nodes	35	73
Lung	20	42
Peritoneum	8	17
Bone	7	15
Other	15	31
CT, chemotherapy; CRT, chemoradiotherapy; ECOG, Eastern Cooperative Oncology Group.		

In the entire cohort ( $N=48$ ), the most common treatment-related grade 1/2 toxicities were fatigue (75%), peripheral sensory neuropathy (58%), and hoarseness (58%). Of the grade  $\geq 3$  toxicities, hypertension (15%), diarrhea (10%), and pneumonia (10%) were the most prevalent (Table 2). Eight patients (17%) experienced one or more treatment-related serious adverse events (Supplemental Table 2). In two patients, adverse events (pneumonia, suicide due to depression) had a fatal outcome.

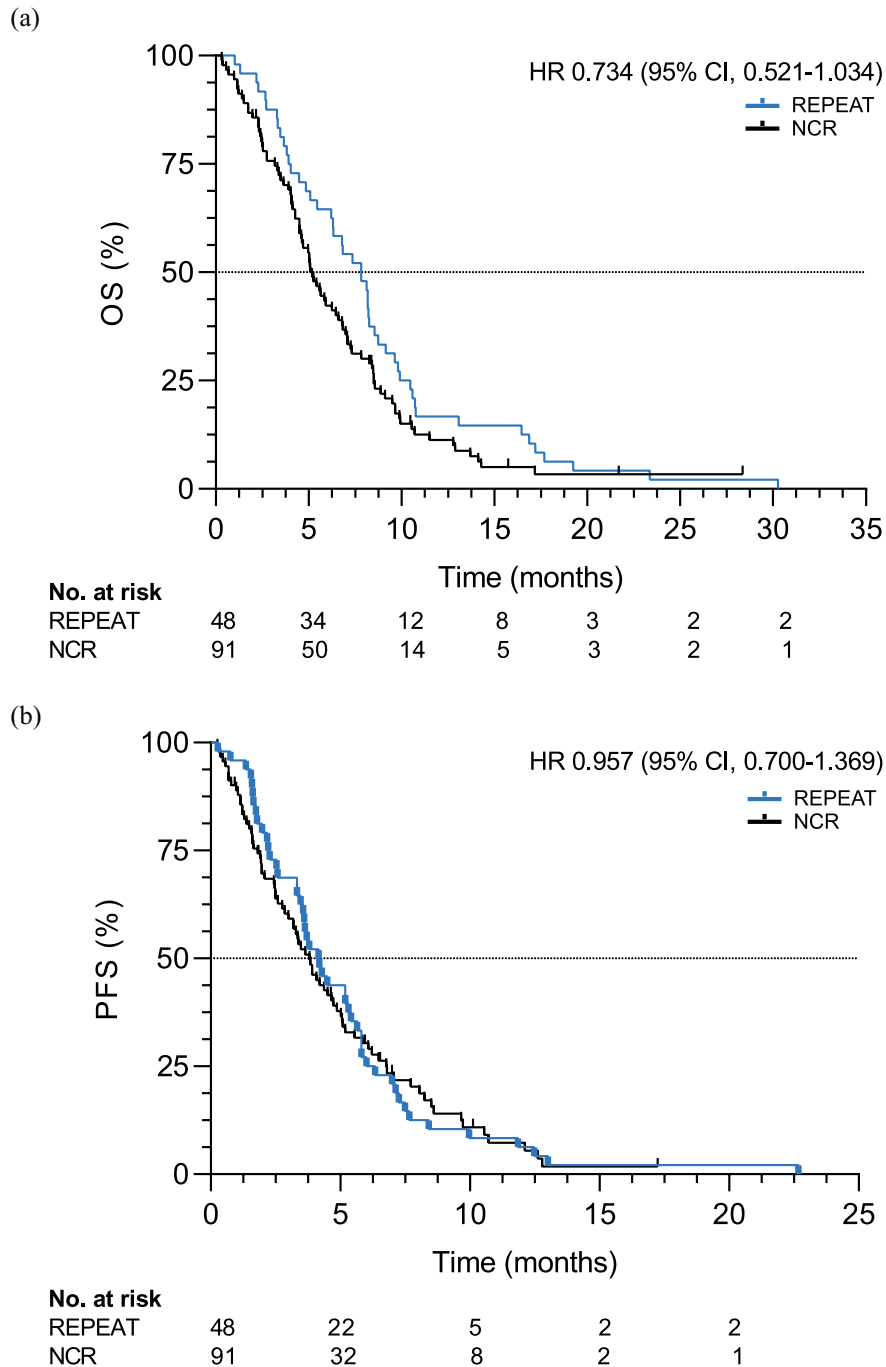
### Efficacy

Patients were followed through May 2020; all patients had deceased at this time. With a median follow-up of 7.8 months (IQR: 4.0–10.3), median OS and PFS were 7.8 (95% CI, 6.5–9.2) and 4.2 (95% CI, 3.2–5.1) months, respectively (Figure 1). Six-month OS and PFS were 65% and 27%, respectively.

All 48 patients were matched to 91 patients from the NCR (Supplemental Table 3). No statistically significant difference in OS was observed in patients receiving paclitaxel and regorafenib compared to the NCR cohort [median OS: 7.8 *versus* 5.2 months, hazard ratio (HR): 0.73, 95% CI, 0.52–1.03,  $p=0.08$ ]. Similar results were observed for PFS (median PFS: 4.2 *versus* 3.8 months, HR: 0.96, 95% CI, 0.67–1.37,  $p=0.81$ ; Figure 1).

**Table 2.** Adverse events.

Adverse event	Grade 1–2	Grade $\geq$ 3
Hematological toxicity		
Anemia	4 (8%)	1 (2%)
Hypokalemia	3 (6%)	1 (2%)
Hypophosphatemia	1 (2%)	3 (6%)
Neutropenia	0	3 (6%)
Gamma-glutamyltransferase increase	0	2 (4%)
Hyperlipasemia	0	2 (4%)
Leukopenia	0	1 (2%)
Non-hematological toxicity		
Fatigue	36 (75%)	2 (4%)
Peripheral sensory neuropathy	28 (58%)	2 (4%)
Hoarseness	28 (58%)	0
Alopecia	27 (56%)	0
Hand–foot syndrome	11 (23%)	2 (4%)
Other rashes	5 (10%)	1 (2%)
Epistaxis	20 (42%)	0
Anorexia	15 (31%)	4 (8%)
Diarrhea	14 (29%)	5 (10%)
Constipation	14 (29%)	1 (2%)
Hypertension	5 (10%)	7 (15%)
Nausea	11 (23%)	0
Oral mucositis	7 (15%)	4 (8%)
Infusion-related reaction	9 (19%)	1 (2%)
Vomiting	9 (19%)	0
Dysphagia	6 (13%)	3 (6%)
Pneumonia	3 (6%)	5 (10%)
Fever	6 (13%)	0
Dry mouth	6 (13%)	0
Peripheral motor neuropathy	4 (8%)	1 (2%)
Gastrointestinal hemorrhage	3 (6%)	1 (2%)
Depression	2 (4%)	1 (2%)
Thromboembolic event	1 (2%)	1 (2%)
Syncope	0	2 (4%)
Pleural effusion	0	1 (2%)
Hepatotoxicity	0	1 (2%)
Atrial fibrillation	0	1 (2%)
Colonic perforation	0	1 (2%)
Bacterial peritonitis	0	1 (2%)



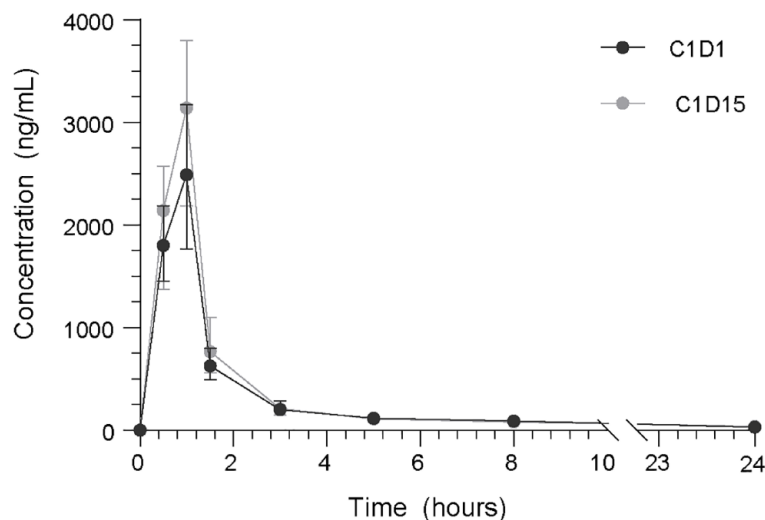
**Figure 1.** OS (a) and PFS (b) in patients ( $N=48$ ) receiving paclitaxel and regorafenib compared to a propensity-score matched cohort of patients ( $N=91$ ) from the NCR receiving standard treatment. NCS, Netherlands Cancer Registry; OS, overall survival; PFS, progression-free survival.

As two patients died before the first response evaluation scan, 46 patients were evaluated for response. ORR was 28%, and no complete responses occurred. Disease control was achieved in 38 (83%) patients. PR, SD, and PD were achieved in 13 (28%), 25 (54%), and 8 (17%) patients, respectively (Supplemental Figure 1).

### Pharmacokinetics

We compared the paclitaxel concentration without regorafenib (day 1) to the concentration with regorafenib (day 15) to assess whether regorafenib influences paclitaxel concentrations in blood. In the dose-escalation cohort, no significant differences in pharmacokinetic parameters of paclitaxel





**Figure 2.** Plasma concentrations (ng/mL) of paclitaxel up to 24 h following infusion, measured on baseline without regorafenib co-administration (C1D1) and on-treatment with concomitant regorafenib administration (C1D15) in all patients receiving 120 mg regorafenib ( $n=40$ ).

were identified between the cohorts receiving 80, 120, or 160 mg regorafenib ( $p > 0.05$ ).

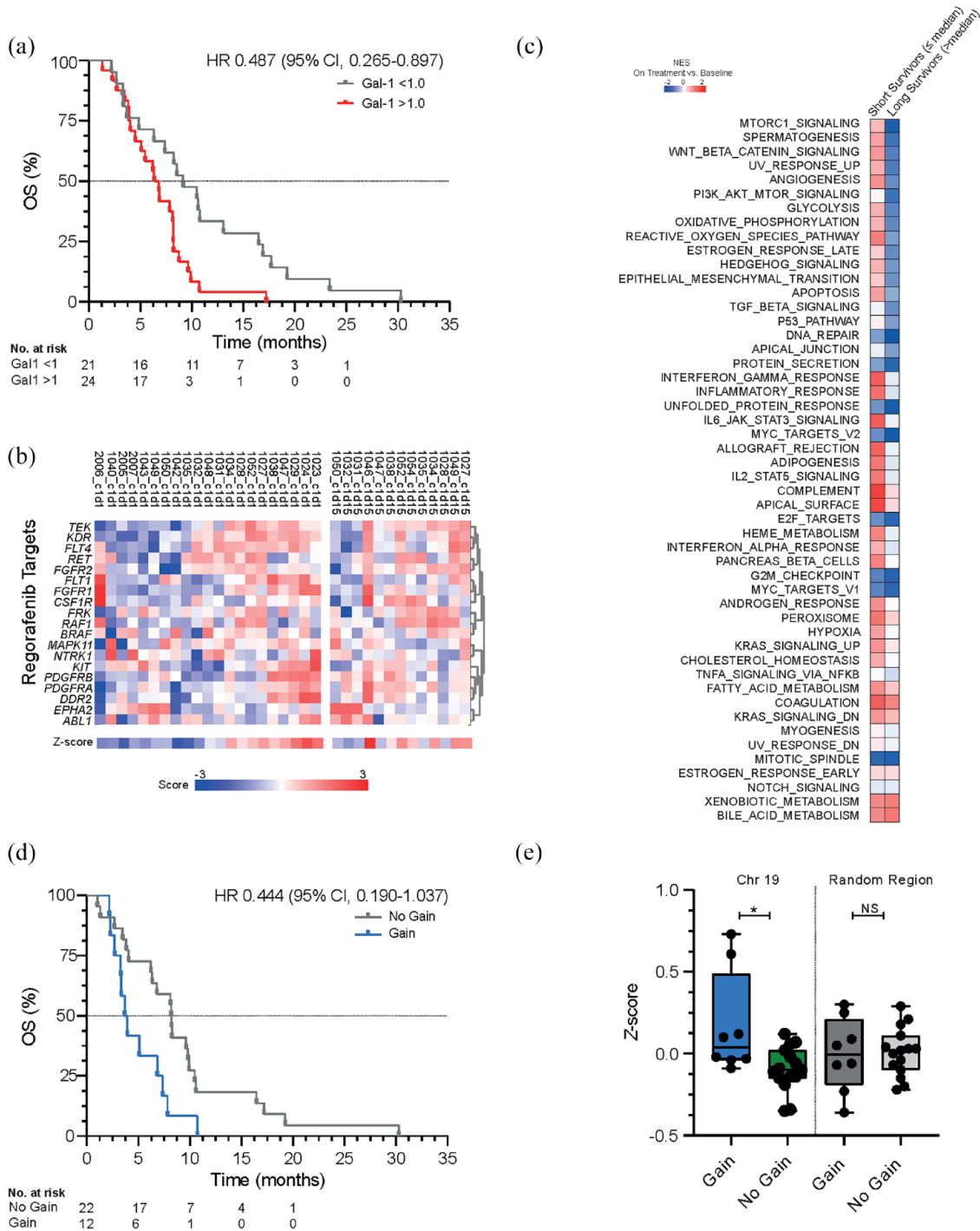
Samples were available for analyses of 47 patients. In the entire cohort receiving 120 mg regorafenib ( $n=40$ ), a significantly higher maximum concentration ( $C_{max}$ ) of paclitaxel and area under the curve ( $AUC_{0-\infty}$ ) (median, range) was observed when regorafenib was administered concomitantly compared to paclitaxel only, respectively ( $C_{max}$  2865 ng/mL, 367–9610 versus 2485 ng/mL, 499–8360,  $p=0.04$ ;  $AUC_{0-\infty}$  5318 ng/mL\*h, 1532–11463 versus 4724 ng/mL\*h, 1614–14114,  $p=0.04$ ; Figure 2, Supplemental Figure 2). Similarly, a significantly longer half-life time of paclitaxel was observed on C1D15 (median: 11.7 h, IQR: 9.6–14.4) compared to C1D1 (median: 9.4 h, IQR: 8.8–11.2;  $p=0.001$ ; Supplemental Table 4). The mean time above the threshold paclitaxel concentration (42.7 ng/mL; 0.05  $\mu$ mol/L) was 11.7 h (SD: 7.10) in C1D1 and 13.7 h (SD: 8.03) in C1D15 ( $p=0.306$ ).

We observed no correlation of pharmacokinetic parameters of paclitaxel with treatment-related toxicity, such as neurotoxicity, mucositis, hand-foot syndrome, or laboratory abnormalities ( $p$  values  $>0.05$ ; Supplemental Table 5). Moreover, no apparent correlation between  $AUC_{0-\infty}$  or  $C_{max}$  was observed with OS ( $p=0.916$ ;  $p=0.526$ ) or PFS ( $p=0.795$ ;  $p=0.864$ ).

#### Exploratory biomarker discovery

*Galectin-1 as a biomarker for survival.* Galectin-1 has been implicated as a biomarker of treatment resistance to anti-angiogenic therapeutics.<sup>34</sup> Of the 48 patients, 45 patients were included in this analysis based on available serum samples. The median (IQR) galectin-1 serum level from the entire cohort was 39.5 ng/mL (29.3–45.3) on day 1 and 40.0 ng/mL (9.8–53.1) on day 15. In our study, patients with increased galectin-1 levels on-treatment compared to baseline [ratio  $>1.0$ ; 46.4 ng/mL (38.8–54.9) day 15 versus 31.0 ng/mL (26.8–44.1) on day 1] had a shorter OS compared to those with decreased levels [31.2 ng/mL (24.6–40.1) versus 41.3 ng/mL (39.2–56.2); HR 0.49 (95% CI, 0.27–0.90),  $p=0.008$ , Figure 3(a)].

*Gene expression.* As regorafenib has a complex inhibition pattern, we investigated the expression of previously established regorafenib targets and the hallmark pathway angiogenesis using RNA sequencing on metastatic tumor biopsies from 23 patients (21 baseline and 13 on-treatment biopsies). Overall, no significant difference in the expression of reported regorafenib targets or hallmark pathways was observed after 15 days of treatment (Figure 3(b),  $p=0.172$ ). A significant increase in the expression of CD8+ cells, B cells, natural killer cells, and neutrophils was observed in the on-treatment samples compared to baseline (Supplemental Figure 4). However, no correlation between survival or response and the



**Figure 3.** (a) OS in patients with an increase in galectin-1 levels on day 15 compared to day 1 (ratio >1.0; n=24) versus a decrease (ratio <1.0; n=21) measured with ELISA. (b) A heatmap of a gene panel from previously established regorafenib targets on baseline (day 1, n=21) compared to on-treatment (day 15, n=13) using RNA sequencing. (c) Normalized enrichment score of established hallmark pathways (MSigDB, 2019) on-treatment (day 15, n=13) compared to baseline (day 1, n=21) according to Gene Set Enrichment Analysis in patients with a short survival and long survival. (d) OS in patients with a gain (n=12) of chromosome 19q13.12-q13.2 versus no gain (n=22). (e) Validation of chromosome 19q13.12-q13.2 in RNA sequencing dataset in patients with a gain (n=12) versus no gain (n=22) compared to a random region on chromosome 19p13.2-13.13. ELISA, enzyme-linked immunosorbent assay; OS, overall survival.

immune deconvolution data was observed (Supplemental Figure 4; Supplemental Table 6). Subsequently, we compared patients with short OS to patients with long OS. In patients with short survival, we observed an increased enrichment of several pathways on-treatment compared to baseline, of which MTORC1, spermatogenesis, Wnt, UV response, and angiogenesis showed the strongest increase (Figure 3(c)). From the genes involved in these pathways, only VEGFA expression was significantly associated with OS and PFS. Patients with high baseline expression of VEGFA demonstrated a shorter OS [HR: 0.27 (95% CI, 0.10–0.72),  $p < 0.001$ ] and PFS [HR 0.40 (95% CI, 0.17–0.96)] compared to those with low baseline VEGFA expression ( $p = 0.006$ ; Supplemental Figure 3). RNA *in situ* hybridization analyses confirmed that VEGFA was expressed predominantly in tumor cells rather than endothelium or immune cells (Supplemental Figure 6).

**DNA copy number analysis.** Copy number variations have previously demonstrated predictive value in a large cohort of metastatic colorectal cancer patients treated with the anti-angiogenic agent bevacizumab.<sup>35</sup> Using genome-wide copy number profiles performed for 34 patients, we identified four prognostic chromosomal regions in chromosomal bands 9q21.1–q31.2, 12q12, 19q13.12–q13.2, and 21q22.11–q22.3 (exact chromosomal locations in Supplemental Appendix 1.7; Supplemental Figure 5). We analyzed if gene expression levels were associated with the specific lost or gained chromosomal regions. This only held for chromosome 19, with significantly higher expression of genes expressed on region 19q13.12–q13.2 in patients with a gain compared to patients without a gain ( $p = 0.032$ , Figure 3(d)–(e)). No significantly higher expression was observed between patients with a gain *versus* no gain when selecting another random region on chromosome 19 ( $p = 0.874$ , Supplemental Figure 5). In patients with amplification (24% 2+; 12% 1+) of chromosome 19q13.12–q13.2, a shorter OS [HR: 0.444 (95% CI, 0.190–1.037),  $p = 0.015$ ] and PFS [HR: 0.467 (95% CI, 0.202–1.077),  $p = 0.024$ ] were observed compared to patients without amplification (59% 0, 6% –2). Galectin-4, a promotor of angiogenesis associated with gastric cancer progression, is expressed on 19q13.12–q13.2.<sup>36</sup> In the RNA sequencing data, galectin-4 demonstrated a correlation to poor outcome, with higher levels in patients with a shorter OS ( $p = 0.007$ ) and PFS ( $p = 0.019$ ). Thus,

these results confirm that chromosomal gains could play a role in sensitivity mechanisms.

## Discussion

This is the first study to investigate the tolerability of paclitaxel and regorafenib in patients with advanced EGC refractory to first-line treatment. The combination of paclitaxel and regorafenib was shown to be well tolerated, with an established MTD of 120 mg regorafenib per day.

We observed a similar toxicity profile compared to studies administering regorafenib in several other solid tumors, with manageable adverse events. Similar or lower incidences of gastrointestinal and regorafenib-related toxicities, such as hand–foot syndrome, were observed in our study.<sup>9–14,18,19,37,38</sup> Moreover, less hematologic toxicity was seen in our study compared to studies with regorafenib monotherapy.<sup>10,18,37</sup> In contrast, higher incidences of peripheral neuropathy and alopecia were observed compared to the aforementioned trials, reasonably attributable to the combination with paclitaxel. Adverse events associated with anti-angiogenic treatment, such as hypertension, epistaxis, and gastrointestinal hemorrhage, were comparable to a large study administering paclitaxel and the VEGFR-2 antagonist ramucirumab.<sup>17</sup> Although it has been reported that the combination of targeted therapy with cytotoxic chemotherapy increases toxicity and discontinuation rates, the current treatment combination did not seem to result in more toxicity than that was reported with both drugs individually.<sup>19,20</sup>

With a median OS of 7.8 months compared to 5.2 months in a propensity-score matched real-world cohort, we observed a numerically higher OS, albeit not statistically significant. Although OS in our study was higher than the majority of second- or third-line studies in EGC,<sup>4,15,39–41</sup> a longer median OS (9.6 months) was observed in patients with gastric adenocarcinoma treated with ramucirumab as second line in the RAINBOW study.<sup>17</sup> Nevertheless, it should be noted that one-third of patients included in our study received treatment as third line. DCR was similar to the RAINBOW study, and treatment with paclitaxel and regorafenib resulted in higher ORR and disease control than other second- or third-line studies.<sup>4,15,17,41</sup>

Significantly higher concentrations of paclitaxel were observed when administered concomitantly

with regorafenib. Overall, both paclitaxel concentrations and time above the minimum threshold were comparable to the literature.<sup>42,43</sup> Pharmacokinetic parameters of paclitaxel have been associated with increased incidences of adverse events. This was not observed in our study, which could support the tolerability of the paclitaxel dose with regorafenib co-administration.<sup>43</sup> Similar to our results, previous research also demonstrated a prolonged duration of plasma chemotherapeutic exposure of docetaxel with concomitant administration of bevacizumab in lung cancer patients.<sup>44</sup> However, in this study, higher peripheral chemotherapeutic concentrations did not result in increased intratumoral chemotherapeutic uptake. As literature is still indecisive whether anti-angiogenic treatment increases intratumoral drug delivery through normalization of the aberrant tumor vasculature, the impact of regorafenib on intratumoral drug delivery remains to be established.

Since we only observed a trend toward a beneficial effect in our unselected cohort, it is essential to identify the mechanisms of resistance and predictive biomarkers to better tailor treatment to individual patients. Due to the intricate inhibition pattern of regorafenib, the identification of predictive biomarkers is challenging.<sup>45</sup> No direct effect of regorafenib administration was observed on previously established regorafenib targets in the gene expression data. The lack of observed effect may be explained by the short time interval between the first and second biopsies, although both intratumor and cohort heterogeneity could also play a role in this relatively small cohort. However, we did observe increased enrichment during treatment predominantly in patients with a short survival compared to those with a long survival. This suggests that alternative activation of angiogenesis in the presence of regorafenib could account for the difference in response. Interestingly, it has been shown that galectin-1 can counteract VEGF-targeted therapy by maintaining VEGFR2 signaling even when VEGF is blocked.<sup>46</sup> Moreover, previous literature has demonstrated that galectin-1 is a potent angiostimulatory protein, and circulating galectins can serve as biomarkers of therapeutic efficacy.<sup>23,47</sup> In our cohort, patients with increasing galectin-1 upon treatment with regorafenib and paclitaxel show a worse outcome when compared to those with decreasing levels, which may reflect compensatory pro-angiogenic signaling. These data coincide with the observation that patients with a high VEGFA tumor expression at baseline,

an important ligand of VEGFR1 and VEGFR2, had poorer outcomes compared to lower VEGFA levels, as also published previously.<sup>48,49</sup>

In our study, a gain of chromosome 19q13.12-q13.2 demonstrated a prognostic value. The potential value as biomarker of this chromosomal region (19q) has previously been identified in esophageal tumors.<sup>50</sup> These findings could indicate the presence of a target gene involved in EGC tumorigenesis on chromosome 19q13.12-q13.2. It is thought that galectin-4, expressed on the latter region and previously associated with galectin-1, plays a role in anti-angiogenic mechanisms by contributing to tumor angiogenesis through enhancement of endothelial cell activity.<sup>51</sup> As both galectin-1 and galectin-4 have been correlated with short survival in patients treated with paclitaxel and regorafenib, these findings could potentially confirm the role of galectins in resistance to regorafenib. However, further investigation is necessary to identify whether it could serve as a predictive biomarker for treatment with regorafenib.

In addition to the presumed role of galectins in anti-angiogenic mechanisms, previous research also unraveled immunoregulatory properties of the galectin family.<sup>52</sup> Galectin-1 and galectin-4 are assumed to play a role in mediation of the suppressive function of regulatory T cells.<sup>52</sup> Unfortunately, we did not observe a statistically significant correlation between response or survival and immune cell expression. Further research could demonstrate whether patients with high expression of galectins, and thus potentially less response to regorafenib, could benefit from the combination of anti-angiogenic treatment with regorafenib and immunotherapy to normalize vascular-immune crosstalk.<sup>53</sup>

In conclusion, treatment with paclitaxel and regorafenib was tolerable and safe in patients with advanced EGC refractory to first-line systemic therapy. Efficacy results were promising, and a numerical, non-significant survival benefit was also demonstrated compared to a propensity-score matched cohort. Galectin-1 and a gain of chromosome 19q13.12-q13.2 are promising negative prognostic, and potentially predictive biomarkers for paclitaxel and regorafenib. These biomarkers could play a role in selecting patients with most benefit for treatment with regorafenib and paclitaxel in future studies. Further research in a randomized controlled trial is warranted to validate these findings.

### Ethics approval and consent to participate

This study was approved by the institutional review board of the AmsterdamUMC (METC, 2015\_013) and conducted following the guidelines of Good Clinical Practice and the ethical principles of the Declaration of Helsinki. All patients provided written informed consent.

### Consent for publication

Not applicable.

### Author contribution(s)

**Charlotte I Stroes:** Conceptualization; Data curation; Formal analysis; Investigation; Methodology; Project administration; Software; Supervision; Validation; Visualization; Writing – original draft; Writing – review & editing.

**Sandor Schokker:** Data curation; Investigation; Project administration; Writing – review & editing.

**Mohammed Khurshed:** Data curation; Investigation; Writing – review & editing.

**Stephanie O van der Woude:** Data curation; Investigation; Project administration; Writing – review & editing.

**Ron AA Mathôt:** Formal analysis; Investigation; Methodology; Writing – review & editing.

**Marije Slingerland:** Conceptualization; Data curation; Investigation; Project administration; Writing – review & editing.

**Judith de Vos-Geelen:** Conceptualization; Data curation; Investigation; Project administration; Writing – review & editing.

**Massimo Zucchetti:** Formal analysis; Methodology; Visualization; Writing – review & editing.

**Cristina Matteo:** Formal analysis; Methodology; Visualization; Writing – review & editing.

**Erik van Dijk:** Data curation; Formal analysis; Methodology; Software; Writing – review & editing.

**Bauke Ylstra:** Data curation; Formal analysis; Methodology; Writing – review & editing.

**Victor Thijssen:** Data curation; Formal analysis; Methodology; Validation; Writing – review & editing.

**Sarah Derks:** Data curation; Formal analysis; Methodology; Writing – review & editing.

**Tesfay Godefa:** Data curation; Formal analysis; Methodology; Writing – review & editing.

**Willemieke Dijksterhuis:** Data curation; Formal analysis; Methodology; Software; Writing – review & editing.

**Gerben E Breimer:** Data curation; Formal analysis; Methodology; Writing – review & editing.

**Otto M van Delden:** Data curation; Investigation; Methodology; Writing – review & editing.

**Rob HA Verhoeven:** Data curation; Formal analysis; Methodology; Software; Writing – review & editing.

**Sybren L Meijer:** Data curation; Formal analysis; Methodology; Writing – review & editing.

**Maarten F Bijlsma:** Conceptualization; Formal analysis; Investigation; Methodology; Supervision; Visualization; Writing – review & editing.

**Hanneke WM van Laarhoven:** Conceptualization; Formal analysis; Funding acquisition; Investigation; Methodology; Project administration; Resources; Supervision; Validation; Visualization; Writing – original draft; Writing – review & editing.

### ORCID iDs

Charlotte I Stroes  <https://orcid.org/0000-0001-8976-6843>

Hanneke WM van Laarhoven  <https://orcid.org/0000-0003-1274-5643>

### Acknowledgements

We would like to acknowledge all patients who participated in this study, as well as their families. We would also like to thank all nursing staff from the Amsterdam UMC, and M.J. Weterman for her essential support. Furthermore, we would like to thank M. Steketee for his support in the DNA copy number analyses, as well as H.F.B. van Essen for the NGS copy number profiling laboratory experiments.

### Funding

The authors disclosed receipt of the following financial support for the research, authorship, and/or publication of this article: Funding for this investigator-initiated study was derived from the Amsterdam UMC, location AMC, with financial

support through an unrestricted research grant from Bayer BV.

### Conflict of interest statement

All authors completed the disclosure of conflict of interest. The following authors declared a potential conflict of interest: S. Schokker has received travel and accommodation reimbursement from Roche. R.A.A. Mathôt has received grants from NOW, ZonMW, and unrestricted investigator research grants from Baxter, Baxalta, Shire, Takeda, Bayer, CSL Behring and Sobi, and reports and advisory role for Bayer, CSL Behring, Merck Sharp & Dohme, Baxter, Baxalta, Shire and Takeda, with fees paid to the institution. R.H.A. Verhoeven has received research grants from Roche and BMS. M.F. Bijlsma reports an advisory role for Servier, and has received a research grant from Celgene. M.I. van Berge Henegouwen reports unrestricted research grants from Stryker and Olympus with fees paid to the institution, and an advisory role for Johnson and Johnson, Mylan, and Medtronic, with fees paid to the institution. H.W.M. van Laarhoven reports an advisory role for BMS, Celgene, Lilly, Merck, Nordic, and Servier, and has received unrestricted research funding from Bayer, BMS, Celgene, Lilly, Merck Serono, MSD, Nordic, Philips, Roche and Servier, with fees paid to the institution.

### Supplemental material

Supplemental material for this article is available online.

### Data availability statement

The sequence data generated in this study are made publicly available in the following archives, and are available within the article and its supplementary data files:

- The shallow whole-genome sequencing data have been deposited at the European Genome-phenome Archive (EGA), under accession number EGAS00001006054.
- The RNA sequencing data has been deposited at the Gene Expression Omnibus database (GEO), under accession number GSE198136.

### References

1. Bray F, Ferlay J, Soerjomataram I, *et al.* Global cancer statistics 2018: GLOBOCAN estimates of

incidence and mortality worldwide for 36 cancers in 185 countries. *CA Cancer J Clin* 2018; 68: 394–424.

2. Cunningham D, Starling N, Rao S, *et al.* Capecitabine and oxaliplatin for advanced esophagogastric cancer. *N Engl J Med* 2008; 358: 36–46.
3. Kang JH, Lee S II, Lim DH, *et al.* Salvage chemotherapy for pretreated gastric cancer: a randomized phase III trial comparing chemotherapy plus best supportive care with best supportive care alone. *J Clin Oncol* 2012; 30: 1513–1518.
4. Ford HER, Marshall A, Bridgewater JA, *et al.* Docetaxel versus active symptom control for refractory oesophagogastric adenocarcinoma (COUGAR-02): An open-label, phase 3 randomised controlled trial. *Lancet Oncol* 2014; 15: 78–86.
5. Van Kleef JJ, Ter Veer E, Van Den Boorn HG, *et al.* Quality of life during palliative systemic therapy for esophagogastric cancer: systematic review and meta-analysis. *J Natl Cancer Inst* 2020; 112: 12–29.
6. Veer E Ter, Mohammad NH, Van Valkenhoef G, *et al.* The efficacy and safety of first-line chemotherapy in advanced esophagogastric cancer: a network meta-analysis. *J Natl Cancer Inst* 2016; 108.
7. Ter Veer E, Haj Mohammad N, van Valkenhoef G, *et al.* Second- and third-line systemic therapy in patients with advanced esophagogastric cancer: a systematic review of the literature. *Cancer Metastasis Rev* 2016; 35: 439–456.
8. Jüttner S, Wißmann C, Jöns T, *et al.* Vascular endothelial growth factor-D and its receptor VEGFR-3: two novel independent prognostic markers in gastric adenocarcinoma. *J Clin Oncol* 2006; 24: 228–240.
9. Pavlakakis N, Sjoquist KM, Martin AJ, *et al.* Regorafenib for the treatment of advanced gastric cancer (INTEGRATE): a multinational placebo-controlled phase II trial. *J Clin Oncol* 2016; 34: 2728–2735.
10. Li J, Qin S, Xu R, *et al.* Regorafenib plus best supportive care versus placebo plus best supportive care in Asian patients with previously treated metastatic colorectal cancer (CONCUR): a randomised, double-blind, placebo-controlled, phase 3 trial. *Lancet Oncol* 2015; 16: 619–629.
11. Grothey A, Van Cutsem E, Sobrero A, *et al.* Regorafenib monotherapy for previously treated metastatic colorectal cancer (CORRECT): an international, multicentre, randomised,

- placebo-controlled, phase 3 trial. *Lancet (London, England)* 2013; 381: 303–312.
12. Demetri GD, Reichardt P, Kang YK, *et al.* Efficacy and safety of regorafenib for advanced gastrointestinal stromal tumours after failure of imatinib and sunitinib (GRID): an international, multicentre, randomised, placebo-controlled, phase 3 trial. *Lancet* 2013; 381: 295–302.
  13. Bruix J, Qin S, Merle P, *et al.* Regorafenib for patients with hepatocellular carcinoma who progressed on sorafenib treatment (RESORCE): a randomised, double-blind, placebo-controlled, phase 3 trial. *Lancet* 2017; 389: 56–66.
  14. Mir O, Brodowicz T, Italiano A, *et al.* Safety and efficacy of regorafenib in patients with advanced soft tissue sarcoma (REGOSARC): a randomised, double-blind, placebo-controlled, phase 2 trial. *Lancet Oncol* 2016; 17: 1732–1742.
  15. Fuchs CS, Tomasek J, Yong CJ, *et al.* Ramucirumab monotherapy for previously treated advanced gastric or gastro-oesophageal junction adenocarcinoma (REGARD): an international, randomised, multicentre, placebo-controlled, phase 3 trial. *Lancet* 2014; 383: 31–39.
  16. Boere IA, Hamberg P and Sleijfer S. It takes two to tango: combinations of conventional cytotoxics with compounds targeting the vascular endothelial growth factor-vascular endothelial growth factor receptor pathway in patients with solid malignancies. *Cancer Sci* 2010; 101: 7–15.
  17. Wilke H, Muro K, Van Cutsem E, *et al.* Ramucirumab plus paclitaxel versus placebo plus paclitaxel in patients with previously treated advanced gastric or gastro-oesophageal junction adenocarcinoma (RAINBOW): A double-blind, randomised phase 3 trial. *Lancet Oncol* 2014; 15: 1224–1235.
  18. Schultheis B, Folprecht G, Kuhlmann J, *et al.* Regorafenib in combination with FOLFOX or FOLFIRI as first- or second-line treatment of colorectal cancer: results of a multicenter, phase Ib study. *Ann Oncol* 2013; 24: 1560–1567.
  19. Sanoff HK, Goldberg RM, Ivanova A, *et al.* Multicenter, randomized, double-blind phase 2 trial of FOLFIRI with regorafenib or placebo as second-line therapy for metastatic colorectal cancer. *Cancer* 2018; 124: 3118–3126.
  20. Niraula S, Seruga B, Ocana A, *et al.* The price we pay for progress: a meta-analysis of harms of newly approved anticancer drugs. *J Clin Oncol* 2012; 30: 3012–3019.
  21. Schmitt JM, Sommers SR, Fisher W, *et al.* Sunitinib plus paclitaxel in patients with advanced esophageal cancer: a phase II study from the Hoosier Oncology Groupe. *J Thorac Oncol* 2012; 7: 760–763.
  22. Heskamp S, Boerman OC, Molkenboer-Kuening JDM, *et al.* Bevacizumab reduces tumor targeting of antiepidermal growth factor and anti-insulin-like growth factor 1 receptor antibodies. *Int J Cancer* 2013; 133: 307–314.
  23. Thijssen VLJL, Postel R, Brandwijk RJMGE, *et al.* Galectin-1 is essential in tumor angiogenesis and is a target for antiangiogenesis therapy. *Proc Natl Acad Sci USA* 2006; 103: 15975–15980.
  24. Storer BE. Design and analysis of phase I clinical trials. *Biometrics* 1989; 45: 925–937.
  25. Eisenhauer EA, Therasse P, Bogaerts J, *et al.* New response evaluation criteria in solid tumours: Revised RECIST guideline (version 1.1). *Eur J Cancer* 2009; 45: 228–247.
  26. Posocco B, Buzzo M, Follegot A, *et al.* A new high-performance liquid chromatography-tandem mass spectrometry method for the determination of paclitaxel and 6 $\alpha$ -hydroxy-paclitaxel in human plasma: development, validation and application in a clinical pharmacokinetic study. *PLoS One* 2018; 13: e0193500.
  27. Zhang Y, Huo M, Zhou J, *et al.* PKSolver: an add-in program for pharmacokinetic and pharmacodynamic data analysis in Microsoft Excel. *Comput Methods Programs Biomed* 99(3): 306–314.
  28. Subramanian A, Tamayo P, Mootha VK, *et al.* Gene set enrichment analysis: A knowledge-based approach for interpreting genome-wide expression profiles. *Proc Natl Acad Sci USA* 2005; 102: 15545 LP – 15550.
  29. Ettrich TJ and Seufferlein T. Regorafenib. In: Martens, U. (eds) *Small Molecules in Oncology. Recent Results in Cancer Research*, Springer, Cham, Vol. 211, 2018. [https://doi.org/10.1007/978-3-319-91442-8\\_3](https://doi.org/10.1007/978-3-319-91442-8_3)
  30. Becht E, Giraldo NA, Lacroix L, *et al.* Estimating the population abundance of tissue-infiltrating immune and stromal cell populations using gene expression. *Genome Biol* 2016; 17: 218.
  31. Scheinin I, Sie D, Bengtsson H, *et al.* DNA copy number analysis of fresh and formalin-fixed specimens by shallow whole-genome sequencing with identification and exclusion of problematic regions in the genome assembly. *Genome Res* 2014; 24: 2022–2032.
  32. van de Wiel MA, Kim KI, Vosse SJ, *et al.* CGHcall: calling aberrations for array CGH tumor profiles. *Bioinformatics* 2007; 23: 892–894.

33. Poell JB, Mendeville M, Sie D, *et al.* ACE: absolute copy number estimation from low-coverage whole-genome sequencing data. *Bioinformatics* 2019; 35: 2847–2849.
34. Navarro P, Martínez-Bosch N, Blidner AG, *et al.* Impact of galectins in resistance to anticancer therapies. *Clin Cancer Res* 2020; 26: 6086–6101.
35. van Dijk E, Biesma HD, Cordes M, *et al.* Loss of Chromosome 18q11.2–q12.1 Is Predictive for Survival in Patients With Metastatic Colorectal Cancer Treated With Bevacizumab. *J Clin Oncol* 2018; 36: 2052–2060.
36. Hippo Y, Yashiro M, Ishii M, *et al.* Differential gene expression profiles of scirrhous gastric cancer cells with high metastatic potential to peritoneum or lymph nodes. *Cancer Res* 2001; 61: 889–895.
37. Van Cutsem E, Martinelli E, Cascinu S, *et al.* Regorafenib for patients with metastatic colorectal cancer who progressed after standard therapy: results of the large, single-arm, open-label Phase IIIb CONSIGN study. *Oncologist* 2019; 24: 185–192.
38. Mross K, Frost A, Steinbild S, *et al.* A phase I dose-escalation study of regorafenib (BAY 73-4506), an inhibitor of oncogenic, angiogenic, and stromal kinases, in patients with advanced solid tumors. *Clin Cancer Res* 2012; 18: 2658–2667.
39. Thuss-Patience PC, Kretschmar A, Bichev D, *et al.* Survival advantage for irinotecan versus best supportive care as second-line chemotherapy in gastric cancer: a randomised phase III study of the Arbeitsgemeinschaft Internistische Onkologie (AIO). *Eur J Cancer* 2011; 47: 2306–2314.
40. Shitara K, Yuki S, Tahahari D, *et al.* Randomised phase II study comparing dose-escalated weekly paclitaxel vs standard-dose weekly paclitaxel for patients with previously treated advanced gastric cancer. *Br J Cancer* 2014; 110: 271–277.
41. Kang YK, Boku N, Satoh T, *et al.* Nivolumab in patients with advanced gastric or gastro-oesophageal junction cancer refractory to, or intolerant of, at least two previous chemotherapy regimens (ONO-4538-12, ATTRACTION-2): a randomised, double-blind, placebo-controlled, phase 3 trial. *Lancet* 2017; 390: 2461–2471.
42. Nokihara H, Yamamoto N, Ohe Y, *et al.* Pharmacokinetics of weekly paclitaxel and feasibility of dexamethasone taper in Japanese patients with advanced non-small cell lung cancer. *Clin Ther* 2016; 38: 338–347.
43. Kobayashi M, Oba K, Sakamoto J, *et al.* Pharmacokinetic study of weekly administration dose of paclitaxel in patients with advanced or recurrent gastric cancer in Japan. *Gastric Cancer* 2007; 10: 52–57.
44. Van der Veldt AAM, Lubberink M, Bahce I, *et al.* Rapid decrease in delivery of chemotherapy to tumors after anti-vegf therapy: implications for scheduling of anti-angiogenic drugs. *Cancer Cell* 2012; 21: 82–91.
45. Teufel M, Seidel H, Köchert K, *et al.* Biomarkers associated with response to regorafenib in patients with hepatocellular carcinoma. *Gastroenterology* 2019; 156: 1731–1741.
46. Croci DO, Cerliani JP, Dalotto-Moreno T, *et al.* Glycosylation-dependent lectin-receptor interactions preserve angiogenesis in anti-VEGF refractory tumors. *Cell* 2014; 156: 744–758.
47. Thijssen VL, Heusschen R, Caers J, *et al.* Galectin expression in cancer diagnosis and prognosis: a systematic review. *Biochim Biophys Acta Rev Cancer* 2015; 1855: 235–247.
48. Suzuki S, Dobashi Y, Hatakeyama Y, *et al.* Clinicopathological significance of platelet-derived growth factor (PDGF)-B and vascular endothelial growth factor-A expression, PDGF receptor- $\beta$  phosphorylation, and microvessel density in gastric cancer. *BMC Cancer* 2010; 10: 659.
49. Kim Y, Nam HJ, Lee J, *et al.* Methylation-dependent regulation of HIF-1 $\alpha$  stability restricts retinal and tumour angiogenesis. *Nat Commun* 2016; 7: 10347.
50. Shi ZZ, Shang L, Jiang YY, *et al.* Consistent and differential genetic aberrations between esophageal dysplasia and squamous cell carcinoma detected by array comparative genomic hybridization. *Clin Cancer Res* 2013; 19: 5867–5878.
51. Chen C, Duckworth CA, Fu B, *et al.* Circulating galectins-2,-4 and-8 in cancer patients make important contributions to the increased circulation of several cytokines and chemokines that promote angiogenesis and metastasis. *Br J Cancer* 2014; 110: 741–752.
52. Rabinovich GA and Toscano MA. Turning ‘sweet’ on immunity: Galectin-glycan interactions in immune tolerance and inflammation. *Nat Rev Immunol* 2009; 9: 338–352.
53. Huinen ZR, Huijbers EJM, van Beijnum JR, *et al.* Anti-angiogenic agents—overcoming tumour endothelial cell anergy and improving immunotherapy outcomes. *Nat Rev Clin Oncol* 2021; 18: 527–540.