



Universiteit  
Leiden  
The Netherlands

## **Minimal clinically important differences in health-related quality of life after total hip or knee replacement A SYSTEMATIC REVIEW**

Keurentjes, J.C.; Tol, F.R. van; Fiocco, M.; Schoones, J.W.; Nelissen, R.G.

### **Citation**

Keurentjes, J. C., Tol, F. R. van, Fiocco, M., Schoones, J. W., & Nelissen, R. G. (2012). Minimal clinically important differences in health-related quality of life after total hip or knee replacement A SYSTEMATIC REVIEW. *Bone & Joint Research*, 1(5), 71-77.  
doi:10.1302/2046-3758.15.2000065

Version: Not Applicable (or Unknown)  
License: [Leiden University Non-exclusive license](#)  
Downloaded from: <https://hdl.handle.net/1887/3627195>

**Note:** To cite this publication please use the final published version (if applicable).



## ■ RESEARCH

# Minimal clinically important differences in health-related quality of life after total hip or knee replacement

## A SYSTEMATIC REVIEW

**J. C. Keurentjes,  
F. R. Van Tol,  
M. Fiocco,  
J. W. Schoones,  
R. G. Nelissen**

From Leiden  
University Medical  
Center, Leiden, The  
Netherlands

■ J. C. Keurentjes, MD,  
Researcher  
■ F. R. Van Tol, Medical Student  
■ R. G. Nelissen, PhD, MD,  
Professor in Orthopaedic Surgery  
Leiden University Medical Center,  
Department of Orthopaedic  
Surgery, Postbus 9600, 2300 RC,  
Leiden, The Netherlands.

■ M. Fiocco, PhD, Assistant  
Professor in Medical Statistics  
Leiden University Medical Center,  
Department of Medical Statistics  
and Bioinformatics, Postbus  
9600, 2300 RC, Leiden, The  
Netherlands.

■ J. W. Schoones, MA,  
Information Specialist  
Leiden University Medical Center,  
Walaeus Library, Postbus 9600,  
2300 RC, Leiden, The  
Netherlands.

Correspondence should be sent  
to Dr J. C. Keurentjes; e-mail:  
j.c.keurentjes@lumc.nl

10.1302/2046-3758.15.2000065  
\$2.00

*Bone Joint Res* 2012;1:71–77.  
Received 21 February 2012;  
Accepted after revision 20 April  
2012

## Objectives

We aimed first to summarise minimal clinically important differences (MCIDs) after total hip (THR) or knee replacement (TKR) in health-related quality of life (HRQoL), measured using the Short-Form 36 (SF-36). Secondly, we aimed to improve the precision of MCID estimates by means of meta-analysis.

## Methods

We conducted a systematic review of English and non-English articles using MEDLINE, the Cochrane Controlled Trials Register (1960–2011), EMBASE (1991–2011), Web of Science, Academic Search Premier and Science Direct. Bibliographies of included studies were searched in order to find additional studies. Search terms included MCID or minimal clinically important change, THR or TKR and Short-Form 36. We included longitudinal studies that estimated MCID of SF-36 after THR or TKR.

## Results

Three studies met our inclusion criteria, describing a distinct study population: primary THR, primary TKR and revision THR. No synthesis of study results can be given.

## Conclusions

Although we found MCIDs in HRQoL after THR or TKR have limited precision and are not validated using external criteria, these are still the best known estimates of MCIDs in HRQoL after THR and TKR to date. We therefore advise these MCIDs to be used as absolute thresholds, but with caution.

**Keywords:** Minimal clinically important differences, Health-related quality of life, SF-36, Total hip replacement, Total knee replacement, Systematic review

## Article focus

■ We hypothesised that the precision of minimal clinically important differences (MCID) estimates could be enhanced by means of a meta-analysis

■ We could not perform a meta-analysis due to the lack of published MCID estimates

## Key messages

■ Meta-analyses enhance the precision of an estimate by pooling data from different studies  
■ Meta-analyses are not limited to results from randomised controlled trials. Any estimate from any type of study can be enhanced using the point estimate and its standard error

## Introduction

Total hip (THR) and knee replacement (TKR) are effective surgical interventions, which alleviate pain and improve function and health-related quality of life (HRQoL) in patients with end-stage degeneration of the hip or knee joint, respectively.<sup>1</sup> Typically, studies report the mean improvement in HRQoL at the population level, which provides information for the average patient in a population. However, this information may not be meaningful for individual patients encountered in clinical practice, who will be concerned with the likelihood that they will experience a meaningful improvement in return for the risk undertaken when

## Strengths and limitations

■ This is the first study that sets out to enhance the precision of the estimate of a minimal clinically important difference

undergoing an intervention.<sup>2</sup> More relevant for the individual patient therefore is the minimal clinically important difference (MCID), defined as the minimal difference in scores of an outcome measure that is perceived by patients as beneficial or harmful.<sup>3,4</sup> The MCID enables patients to be classified as either a responder or a non-responder to a particular therapy, based on their own assessment of their pre- and post-operative HRQoL. Additionally, the MCID allows an estimation of the probability of a relevant improvement in HRQoL of a particular therapy.

Expected benefits of treatment must be weighed against its adverse effects, inconvenience and costs.<sup>5</sup> Therefore, there is not necessarily a single MCID value for any one outcome measure of HRQoL, which can be used for all applications and patient samples.<sup>6</sup> For instance, the benefits of treatment in patients suffering from end-stage osteoarthritis are considerably larger for THR and TKR compared with rehabilitational interventions. On the other hand, the risk of adverse effects is also considerably higher. These differences complicate the direct use of MCIDs in HRQoL as established for rehabilitational interventions,<sup>7</sup> in THR or TKR patients. The use of specific MCIDs in HRQoL after THR or TKR should be encouraged.

MCIDs can be established using two different methods. Anchor-based approaches use an external indicator to assign patients into several groups reflecting different amounts of change in health status.<sup>6</sup> The within-person global change rating is often used as an anchor, which is measured using Likert scales, ranging from five to 15 options.<sup>6</sup> Positive MCIDs are usually estimated by the mean difference between pre- and post-operative scores of patients, who indicate that their condition is 'somewhat better'; negative MCIDs are usually estimated by the mean difference between pre- and post-operative scores of patients who indicate that their condition is 'somewhat worse'.<sup>5,8</sup> Distribution-based methods offer another approach in the estimation of MCIDs, which interpret results in terms of the relation between the magnitude of effect and some measure of variability in results.<sup>5</sup> Individual effect size standards are often used to estimate the MCID, which is defined as the difference between a patient's pre- and post-operative HRQoL scores, normed to the standard deviation of the pre-operative scores.<sup>8</sup> Generally accepted individual effect size standards are equal to the group effect size standards, as defined by Cohen.<sup>9</sup> Therefore, the MCID is calculated by multiplying the standard deviation of patients at baseline by 0.5.

Recently Quintana et al<sup>10</sup> and Escobar et al<sup>11</sup> have estimated MCIDs for the SF-36 after THR and TKR. However, these authors have advised against using the found estimates of MCIDs as absolute thresholds, due to the imprecision of these estimates caused by small sample sizes. The precision of an estimate can be enhanced by pooling results of multiple studies in a meta-analysis. Therefore,

the purpose of our study was to enhance the precision of the MCIDs after THR and TKR, by means of a systematic review and meta-analysis.

## Materials and Methods

This systematic review was performed in November 2011, using the PRISMA-Statement (Preferred Reporting Items for Systematic Reviews and Meta-Analyses) as a guideline in the development of the study protocol and the report of the current study.<sup>12</sup> The inclusion criteria and methods of analysis were specified in advance and documented in a protocol.

**Information sources and search strategy.** Longitudinal studies that estimate the MCID in HRQoL, measured using the Short-Form 36 (SF-36), after primary or revision THR or TKR, were eligible for inclusion. No language, publication date, or publication status restrictions were imposed.

Studies were identified by searching electronic databases. No limits were applied for language and foreign papers were translated. This search strategy was applied to PubMed, MEDLINE, Embase, Web of Science, COCHRANE, ScienceDirect and Academic Search Premier. The search was run on 8 November 2011. The following search terms were used in PubMed, and were adapted for the other databases: (Mcid[tw] OR cid[tw] OR "Minimal clinically important differences" OR "Minimal clinically important difference" OR "clinically important differences" OR "clinically important difference" OR MCIC[tw] OR "Minimal clinically important changes" OR "Minimal clinically important change" OR "clinically important changes" OR "clinically important change" OR "Minimal clinical important differences" OR "Minimal clinical important difference" OR "clinical important differences" OR "clinical important difference" OR "clinical important changes" OR "minimal detectable change" OR "minimal detectable changes" OR "minimally detectable change" OR "meaningful changes" OR "meaningful change") AND (tka[tw] OR "knee replacement arthroplasty" OR "knee arthroplasty" OR "knee replacement" OR "knee prosthesis" OR tha[tw] OR "hip replacement arthroplasty" OR "hip arthroplasty" OR "hip replacement" OR "hip prosthesis" OR "knee" OR "knees" OR "hip" OR "hips") AND ("SF36" OR "SF-36" OR "short form 36" OR "shortform 36").

**Study selection.** Two authors (JCK and FRvT) independently screened titles and abstracts of the papers resulting from the database search using predefined eligibility criteria. Papers were considered eligible for inclusion if they met two criteria; they were to concern primary or revision THR or TKR and should include an estimate of a MCID. The full text of all included papers, based on titles and abstracts, were screened using the same inclusion criteria. Disagreements between reviewers were resolved by consensus.

**HRQoL measured using SF-36.** The SF-36 consists of 36 items, covering eight domains (physical function, role physical, bodily pain, general health, vitality, social function, role emotional, and mental health), for which a

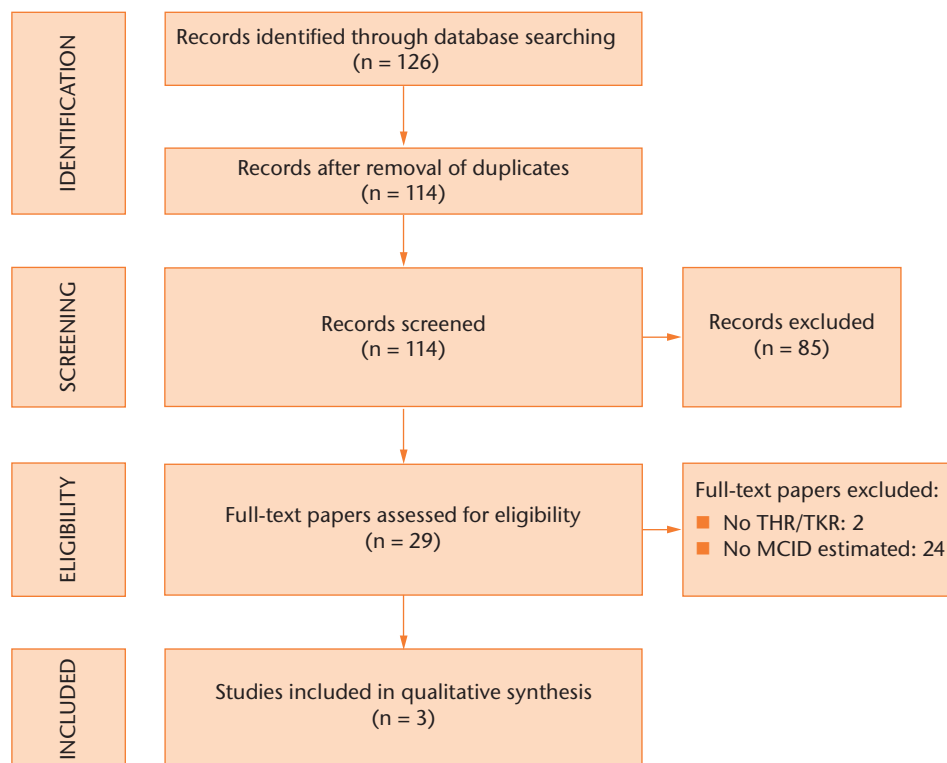


Fig. 1

Flow-chart of study inclusion (THR, total hip replacement; TKR, total knee replacement; MCID, minimal clinically important difference).

transformed score is calculated (100 indicating no symptoms and 0 indicating extreme symptoms).<sup>13</sup>

**Data collection process and data items.** Both authors extracted the data independently, using a predefined data extraction form. Areas of disagreement or uncertainty were resolved by consensus. Estimates of MCIDs were extracted from included studies. For anchor-based estimates of MCIDs, we extracted the number of patients, on which the estimate was based, and the standard deviation. For distribution-based estimates, we extracted the number of patient on which the estimate was based. Additionally, study characteristics, concerning follow-up period, sample size, proportion of patients who underwent joint replacement for osteoarthritis, proportion of males, mean patient age and proportion lost to follow-up, were collected.

**Risk of bias in individual studies.** We assessed the risk of bias in the included studies through a modified Newcastle-Ottawa Quality Assessment Scale,<sup>14</sup> which included the following questions: which approach was used to estimate the MCID? (anchor-based *versus* distribution-based); was any form of additional validation performed? (yes/no); was the study population representative of THR or TKR in general? (truly representative/somewhat representative/selected population/not enough information given); was the follow-up adequate?

(no loss to follow-up/< 5% lost to follow-up (unlikely to bias results)/> 5% lost to follow-up (results possibly biased)). We chose the cut-off point of 5% lost to follow-up according to Pijls et al,<sup>15</sup> who established this threshold for observational studies in orthopaedic literature, using a Delphi approach to form consensus between a group of experts in the fields of THR, TKR or evidence-based medicine.

#### Summary measures and planned methods of analysis.

The primary outcome measure was the MCID in HRQoL, measured using SF-36, for primary THR, primary TKR, revision THR and revision TKR. Whenever possible, estimates of MCIDs were pooled using inverse variance weighting. 95% confidence intervals (CI) were calculated for all MCID estimates.

## Results

**Study selection.** The search strategy revealed a total of 126 results (Fig. 1). After removal of duplicate entries, 114 unique papers remained. Screening of titles and abstracts revealed 29 papers eligible for inclusion. Further assessment of eligibility, based on full-text papers, led to the exclusion of 26 papers: two did not address THR or TKR and 24 presented no estimation of an MCID. This left three papers, describing three studies, for further analysis.<sup>10,11,16</sup>

**Table I.** Study characteristics of the three included studies

Authors	Intervention	Follow-up	Setting	Positive/negative MCID estimated	Sample size of study	Sample size for MCID estimation	Osteoarthritis (%)	Male gender (%)	Mean age (yrs)	Lost to follow-up (%)
Escobar et al <sup>11</sup>	Primary TKR	6 months	Multi-centre	Positive MCID only	423	76	100	25.0	71.6	22.39
	Primary TKR	2 years	Multi-centre	Positive MCID only	364	65	100	25.0	71.6	33.21
Quintana et al <sup>10</sup>	Primary THR	6 months	Multi-centre	Positive MCID only	485	43	100	49.3	69.4	21.86
	Primary THR	2 years	Multi-centre	Positive MCID only	310	33	100	49.3	69.4	36.08
Shi et al <sup>16</sup>	Revision THR	6 months	Multi-centre	Positive MCID only	67	67	n/a	56.7	70.2	16.25

**Table II.** Risk of bias within the three included studies

Authors	Intervention*	Follow-up	MCID <sup>†</sup> methodology	Additional validation	Representativeness of study population	Adequacy of follow-up
Escobar et al <sup>11</sup>	Primary TKR	6 months	Anchor-based	No	Truly representative	More than 5% lost, results possibly biased
	Primary TKR	2 years	Anchor-based	No	Truly representative	More than 5% lost, results possibly biased
Quintana et al <sup>10</sup>	Primary THR	6 months	Anchor-based	No	Truly representative	More than 5% lost, results possibly biased
	Primary THR	2 years	Anchor-based	No	Truly representative	More than 5% lost, results possibly biased
Shi et al <sup>16</sup>	Revision THR	6 months	Distribution-based	No	Description of cohort incomplete: no statement on indication for primary intervention	More than 5% lost, results possibly biased

\* TKR, total knee replacement; THR, total hip replacement

† MCID, minimal clinically important difference

**Study characteristics.** An overview of the study characteristics of all included studies is presented in Table I. Quintana et al<sup>10</sup> describe the MCID in SF-36 after primary THR at follow-up periods of six months and two years; Escobar et al<sup>11</sup> describe the MCID in SF-36 after primary TKR at follow-up periods of six months and two years; and Shi et al<sup>16</sup> describe the MCID in SF-36 after revision THR at a follow-up period of six months (Table I). All included studies were multi-center studies. All studies estimated positive MCIDs (i.e. the minimal difference in scores of the SF-36 that is perceived by patients as beneficial); no study estimated negative MCIDs (the minimal difference in scores of an outcome measure that is perceived by patients as harmful). The sample for the estimation of the MCIDs was 43 patients after six months and 33 after two years for Quintana et al<sup>10</sup>; 76 after six months and 65 after two years for Escobar et al<sup>11</sup>; and 67 after six months for Shi et al<sup>16</sup> (Table I). The indication for joint replacement was osteoarthritis in all patients of Quintana et al<sup>10</sup> and Escobar et al,<sup>11</sup> while Shi et al<sup>16</sup> offered no statement of the

indication for joint replacement (Table I). In all studies, some patients were lost to follow-up.

**Risk of bias within studies.** An overview of the risk of bias within studies is presented in Table II. Two studies used anchor-based approaches to estimate the MCID,<sup>10,11</sup> while the other used a distribution-based approach.<sup>16</sup> No study performed any form of additional validation. The study populations of Quintana et al<sup>10</sup> and Escobar et al<sup>11</sup> are truly representative of THR and TKR patients in general, while Shi et al<sup>16</sup> did not provide enough information to assess the representativeness by leaving out the indication of joint replacement. All studies lost > 5% of patients to follow-up, rendering a possibility of biased results.

**Synthesis of results.** All studies have described a distinct study population, precluding any meaningful synthesis of study results. An overview of the results of all individual studies is presented in Table III and Figures 2 and 3. The MCIDs are presented with 95% confidence intervals for each of the SF-36 domains in primary TKR and primary and revision THR at six months (Fig. 2, Table III)<sup>10,11,16</sup> and for primary TKR and THR at two years post-operatively (Fig. 3, Table III).<sup>10,11</sup>

**Table III.** Minimal clinically important differences (MCIDs) in Short-Form 36 (SF-36) domains after primary and revision total hip replacement (THR) and primary total knee replacement (TKR)

	SF-36 domain	MCID (95% confidence interval)	
		At six months	At two years
Primary THR	Physical functioning	20.40 (14.4 to 26.4)	8.29 (-1.8 to 18.4)
	Role physical	10.78 (1.5 to 20.0)	11.00 (-1.3 to 23.3)
	Bodily pain	14.67 (6.8 to 22.6)	18.34 (9.1 to 27.6)
	General health	0.40 (-5.2 to 6.0)	-6.37 (-10.9 to -1.9)
	Vitality	10.14 (3.1 to 17.2)	14.51 (6.4 to 22.6)
	Social functioning	8.63 (0.9 to 16.4)	17.97 (7.8 to 28.1)
	Role emotional	-6.45 (-24.5 to 11.6)	20.83 (-0.6 to 42.3)
	Mental health	8.99 (2.3 to 15.7)	16.15 (9.0 to 23.3)
Primary TKR	Physical functioning	11.57 (6.5 to 16.7)	11.07 (5.8 to 16.3)
	Role physical	11.69 (3.8 to 19.6)	13.16 (3.5 to 22.8)
	Bodily pain	16.86 (9.7 to 24.0)	6.69 (-0.4 to 13.8)
	General health	0.85 (-3.2 to 4.9)	-7.30 (-11.3 to -3.3)
	Vitality	3.86 (-1.7 to 9.4)	3.44 (-2.2 to 9.1)
	Social functioning	11.66 (3.7 to 19.6)	6.15 (-1.7 to 14.0)
	Role emotional	7.65 (-4.5 to 19.8)	2.42 (-9.2 to 14.1)
	Mental health	-0.32 (-5.5 to 4.9)	4.02 (-1.7 to 9.7)
Revision THR	Physical functioning	3.25 (2.8 to 3.9)	-
	Role physical	4.78 (4.1 to 5.8)	-
	Bodily pain	14.91 (12.7 to 18.0)	-
	General health	14.12 (12.1 to 17.0)	-
	Vitality	22.81 (19.5 to 27.5)	-
	Social functioning	15.83 (13.5 to 19.1)	-
	Role emotional	19.98 (17.1 to 24.1)	-
	Mental health	12.37 (10.6 to 14.9)	-

## Discussion

We have found one study describing MCIDs in SF-36 after primary THR,<sup>10</sup> one after primary TKR<sup>11</sup> and one after revision THR<sup>16</sup>; we did not find any studies describing MCIDs after revision TKR. As all studies have described a distinct study population, no synthesis of study results can be given. Therefore, we were unable to improve the precision of each MCID estimate.

However, in order to visualise the precision of all MCID estimates, we calculated 95% confidence intervals of all MCID estimates, which were not presented in the original studies. These confidence intervals are presented in Figures 2 and 3.

The findings of this systematic review underline the need to identify MCIDs for each specific population. As can be seen from Figures 2 and 3, MCIDs differ both between SF-36 subscales and patient populations. The use of a 'one-size-fits-all' MCID does not appear justified, as patients suffering from osteoarthritis of the hip and knee, which are regarded as similar disease entities, have different MCIDs in HRQoL.<sup>17-19</sup> In order to study patient-relevant improvements in HRQoL at the individual level in revision TKR patients, MCIDs need to be established in this particular population as well.

Limitations of the included studies include imprecision as a result of small sample sizes, the lack of validation of

the MCID estimates and the rates of loss to follow-up. Anchor-based approaches in particular suffer from imprecision due to small sample sizes, as this approach uses only a part of all data to estimate the MCID. A precise estimation of the MCID is further hampered by the clinical success of joint replacement: typically, one expects a large effect of THR or TKR.<sup>20</sup> The group sizes of patients who indicate that their condition has "somewhat improved" are therefore expected to be small, which contributes to an imprecise estimation of MCIDs. Unfortunately, there are only two ways to improve the precision of anchor-based MCID estimates: one can either perform larger studies, or pool study results in a meta-analysis. To date, the only studies that have established anchor-based MCIDs in HRQoL after primary THR or TKR were those of Quintana et al<sup>10</sup> and Escobar et al.<sup>11</sup> More research is required to improve the precision of MCIDs in HRQoL. Estimates with higher precision are generated by distribution-based approaches, which use data from the entire population to estimate the MCID. However, these approaches are criticised for the arbitrariness of the individual effect size standards.<sup>5</sup>

A strongly recommended method of determining MCIDs is by triangulation of multiple approaches.<sup>6</sup> None of the included studies has applied any form of additional validation, such as secondary anchor questions; all used a

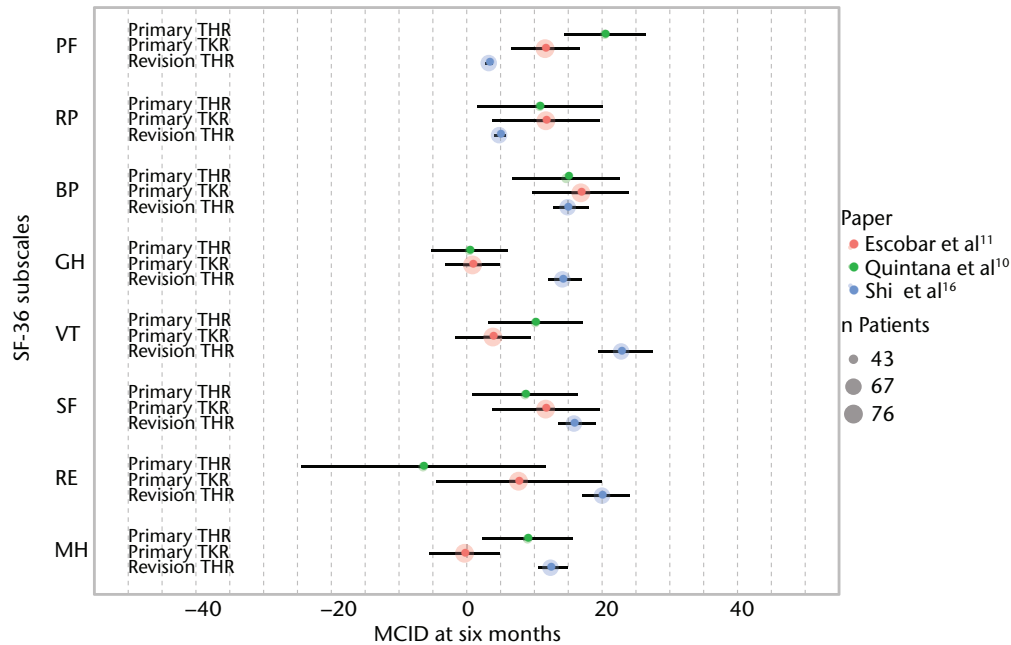


Fig. 2

Graph showing the minimal clinically important differences (MCIDs) in the domains of the Short-Form 36 (SF-36) at six months after primary total hip (THR)<sup>10</sup> and total knee replacement (TKR)<sup>11</sup> and revision THR.<sup>16</sup> The size of the coloured circles represents the sample sizes used to estimate the MCID, and the error bars denote the 95% confidence intervals (PF, physical functioning; RP, role physical; BP, bodily pain; GH, general health; VT, vitality; SF, social functioning; RE, role emotional; MH, mental health).

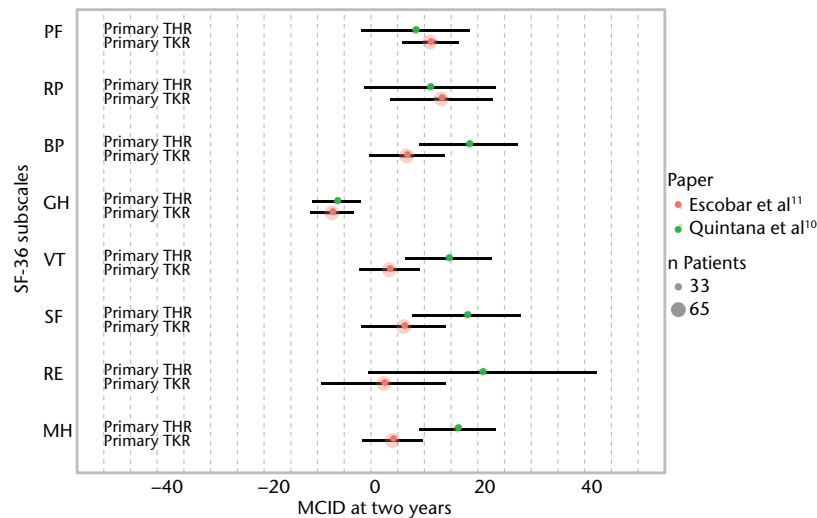


Fig. 3

Graph showing the minimal clinically important differences (MCIDs) in the domains of the Short-Form 36 (SF-36) at two years after primary total hip (THR)<sup>10</sup> and total knee replacement (TKR).<sup>11</sup> The size of the coloured circles represents the sample sizes used to estimate the MCID, and the error bars denote the 95% confidence intervals (PF, physical functioning; RP, role physical; BP, bodily pain; GH, general health; VT, vitality; SF, social functioning; RE, role emotional; MH, mental health).

single approach. Besides a limited precision, caused by small group sizes, the accuracy of the MCID estimates might be limited as well due to this lack of additional validation.<sup>21</sup> Therefore, further research is needed to provide

external validation of the established MCIDs in HRQoL. However, until further research is performed, the MCID estimates of these three studies<sup>10,11,16</sup> are the best available estimates. Cautious use of these estimates should be

encouraged in order to study improvement in HRQoL at the individual level, the most relevant outcome measure for individual patients encountered in clinical practice.

## References

- Harris WH, Sledge CB. Total hip and total knee replacement (1). *N Engl J Med* 1990;323:725–731.
- Singh J, Sloan JA, Johanson NA. Challenges with health-related quality of life assessment in arthroplasty patients: problems and solutions. *J Am Acad Orthop Surg* 2010;18:72–82.
- Jaeschke R, Singer J, Guyatt GH. Measurement of health status: ascertaining the minimal clinically important difference. *Control Clin Trials* 1989;10:407–415.
- King MT. A point of minimal important difference (MID): a critique of terminology and methods. *Expert Rev Pharmacoecon Outcomes Res* 2011;11:171–184.
- Guyatt GH, Osoba D, Wu AW, Wyrwich KW, Norman GR; Clinical Significance Consensus Meeting Group. Methods to explain the clinical significance of health status measures. *Mayo Clin Proc* 2002;77:371–383.
- Revicki D, Hays RD, Cella D, Sloan J. Recommended methods for determining responsiveness and minimally important differences for patient-reported outcomes. *J Clin Epidemiol* 2008;61:102–109.
- Angst F, Aeschlimann A, Stucki G. Smallest detectable and minimal clinically important differences of rehabilitation intervention with their implications for required sample sizes using WOMAC and SF-36 quality of life measurement instruments in patients with osteoarthritis of the lower extremities. *Arthritis Rheum* 2001;45:384–391.
- Wyrwich KW, Wolinsky FD. Identifying meaningful intra-individual change standards for health-related quality of life measures. *J Eval Clin Pract* 2000;6:39–49.
- Cohen J. *Statistical power analysis for the behavioral sciences*. New York: Routledge, 1988.
- Quintana JM, Escobar A, Bilbao A, et al. Responsiveness and clinically important differences for the WOMAC and SF-36 after hip joint replacement. *Osteoarthritis Cartilage* 2005;13:1076–1083.
- Escobar A, Quintana JM, Bilbao A, et al. Responsiveness and clinically important differences for the WOMAC and SF-36 after total knee replacement. *Osteoarthritis Cartilage* 2007;15:273–280.
- Moher D, Liberati A, Tetzlaff J, Altman DG; PRISMA Group. Preferred reporting items for systematic reviews and meta-analyses: the PRISMA statement. *BMJ* 2009;339:2535.
- Ware JE, Snow KK, Kosinski M, Gandek B. *SF-36 health survey?: manual and interpretation guide*. Boston: The Health Institute New England Medical Center, 1993.
- Wells GA, Shea B, O'Connell D, et al. The Newcastle-Ottawa Scale (NOS) for assessing the quality of nonrandomised studies in meta-analyses. [http://www.ohri.ca/programs/clinical\\_epidemiology/oxford.asp](http://www.ohri.ca/programs/clinical_epidemiology/oxford.asp) (date last accessed 2 May 2012).
- Pijls BG, Dekkers OM, Middeldorp S, et al. AQUILA: assessment of quality in lower limb arthroplasty: an expert Delphi consensus for total knee and total hip arthroplasty. *BMC Musculoskelet Disord* 2011;12:173.
- Shi HY, Chang JK, Wong CY, et al. Responsiveness and minimal important differences after revision total hip arthroplasty. *BMC Musculoskelet Disord* 2010;11:261.
- Zhang W, Moskowitz RW, Nuki G, et al. OARSI recommendations for the management of hip and knee osteoarthritis, part I: critical appraisal of existing treatment guidelines and systematic review of current research evidence. *Osteoarthritis Cartilage* 2007;15:981–1000.
- Zhang W, Moskowitz RW, Nuki G, et al. OARSI recommendations for the management of hip and knee osteoarthritis, part II: OARSI evidence-based, expert consensus guidelines. *Osteoarthritis Cartilage* 2008;16:137–162.
- Zhang W, Nuki G, Moskowitz RW, et al. OARSI recommendations for the management of hip and knee osteoarthritis: part III: changes in evidence following systematic cumulative update of research published through January 2009. *Osteoarthritis Cartilage* 2010;18:476–499.
- Chesworth BM, Mahomed NN, Bourne RB, Davis AM; OJRR Study Group. Willingness to go through surgery again validated the WOMAC clinically important difference from THR/TKR surgery. *J Clin Epidemiol* 2008;61:907–918.
- Walther BA, Moore JL. The concepts of bias, precision and accuracy, and their use in testing the performance of species richness estimators, with a literature review of estimator performance. *Ecography* 2005;28:815–829.

### Funding statement:

- None declared

### Author contributions:

- J. C. Keurentjes: Study conception and design, Data analysis, Data collection, Drafting of the article, Statistical analysis
- F. R. Van Tol: Study conception and design, Data collection, Drafting of the article
- R. G. Nelissen: Study conception and design, Critical revision of the article
- M. Fiocco: Data analysis, Critical revision of the article, Statistical analysis
- J. W. Schoones: Study conception and design, Critical revision of the article, Provision of study material

### ICMJE Conflict of Interest:

- None declared

©2012 British Editorial Society of Bone and Joint Surgery. This is an open-access article distributed under the terms of the Creative Commons Attributions licence, which permits unrestricted use, distribution, and reproduction in any medium, but not for commercial gain, provided the original author and source are credited.