



**Universiteit
Leiden**
The Netherlands

Predicting mortality risk on dialysis and conservative care: development and internal validation of a prediction tool for older patients with advanced chronic kidney disease

Ramspek, C.L.; Verberne, W.R.; Buren, M. van; Dekker, F.W.; Bos, W.J.W.; Diepen, M. van

Citation

Ramspek, C. L., Verberne, W. R., Buren, M. van, Dekker, F. W., Bos, W. J. W., & Diepen, M. van. (2020). Predicting mortality risk on dialysis and conservative care: development and internal validation of a prediction tool for older patients with advanced chronic kidney disease, *14*(1), 189-196. doi:10.1093/ckj/sfaa021

Version: Publisher's Version

License: [Creative Commons CC BY-NC 4.0 license](#)



Downloaded from: <https://hdl.handle.net/1887/3626985>

Note: To cite this publication please use the final published version (if applicable).



ORIGINAL ARTICLE

Predicting mortality risk on dialysis and conservative care: development and internal validation of a prediction tool for older patients with advanced chronic kidney disease

Chava L. Ramspek ¹, Wouter R. Verberne ^{2,3}, Marjolijn van Buren^{3,4}, Friedo W. Dekker¹, Willem Jan W. Bos^{2,3} and Merel van Diepen¹

¹Department of Clinical Epidemiology, Leiden University Medical Center, Leiden, The Netherlands,

²Department of Internal Medicine, St Antonius Hospital, Nieuwegein, The Netherlands, ³Department of Internal Medicine, Leiden University Medical Center, Leiden, The Netherlands and ⁴Department of Internal Medicine, Haga Hospital, The Hague, The Netherlands

Correspondence to: Chava L. Ramspek; E-mail: c.l.ramspek@lumc.nl

ABSTRACT

Background. Conservative care (CC) may be a valid alternative to dialysis for certain older patients with advanced chronic kidney disease (CKD). A model that predicts patient prognosis on both treatment pathways could be of value in shared decision-making. Therefore, the aim is to develop a prediction tool that predicts the mortality risk for the same patient for both dialysis and CC from the time of treatment decision.

Methods. CKD Stage 4/5 patients aged ≥ 70 years, treated at a single centre in the Netherlands, were included between 2004 and 2016. Predictors were collected at treatment decision and selected based on literature and an expert panel. Outcome was 2-year mortality. Basic and extended logistic regression models were developed for both the dialysis and CC groups. These models were internally validated with bootstrapping. Model performance was assessed with discrimination and calibration.

Results. In total, 366 patients were included, of which 126 chose CC. Pre-selected predictors for the basic model were age, estimated glomerular filtration rate, malignancy and cardiovascular disease. Discrimination was moderate, with optimism-corrected C-statistics ranging from 0.675 to 0.750. Calibration plots showed good calibration.

Conclusions. A prediction tool that predicts 2-year mortality was developed to provide older advanced CKD patients with individualized prognosis estimates for both dialysis and CC. Future studies are needed to test whether our findings hold in other CKD populations. Following external validation, this prediction tool could be used to compare a patient's prognosis on both dialysis and CC, and help to inform treatment decision-making.

Keywords: chronic kidney disease, conservative care, dialysis, end-stage kidney disease, prediction model

Received: 19.7.2019. Editorial decision: 24.1.2020

© The Author(s) 2020. Published by Oxford University Press on behalf of ERA-EDTA.

This is an Open Access article distributed under the terms of the Creative Commons Attribution Non-Commercial License (<http://creativecommons.org/licenses/by-nc/4.0/>), which permits non-commercial re-use, distribution, and reproduction in any medium, provided the original work is properly cited. For commercial re-use, please contact journals.permissions@oup.com

INTRODUCTION

End-stage kidney disease (ESKD) is an increasingly large public health burden, with high morbidity and mortality rates [1, 2]. Treatment options for ESKD consist of kidney replacement therapy (KRT) or non-dialytic conservative care (CC). CC consists of on-going treatment and symptom control with medication and diet/lifestyle instructions, and mainly focusses on quality of life. For older patients, dialysis treatment has become the most common treatment in more economically developed countries. However, as the ESKD population ages and focus shifts towards quality of life, a CC approach has emerged as a treatment alternative to dialysis [3]. Studies have shown that in some patient groups dialysis might not have a survival benefit compared with CC, not to mention the treatment burden that comes with dialysis [4, 5]. A recent study showed that the top two health outcome priorities of older chronic kidney disease (CKD) patients are maintaining independence and staying alive [6]. It is therefore important to openly discuss all treatment options, expected outcomes and the patient's preferences in patients with advanced CKD [5, 7].

In order to foster shared decision-making and personalized treatment, patients should be provided with accurate information on their prognosis for each treatment strategy [5, 8]. There is a large range in survival time of patients on both dialysis and CC. This brings challenges in communicating information on prognosis and selecting patients who would benefit from dialysis or CC [9, 10]. Though multiple prediction models have been developed that predict mortality risk in dialysis patients, no models exist that predict the prognosis on CC [11]. More importantly, no models have been developed that predict mortality for both dialysis and CC at the time of treatment decision. Clinically speaking this is the most relevant time of prediction, as it could provide an individual patient with their hypothetical prognosis on both dialysis and CC. Such a prediction tool could be employed as a decision aid at the time of treatment choice and be of value in patient discussions when considering potential benefits and burdens of both treatment options [8, 12].

The aim of this study is, therefore, to develop and internally validate two prediction models of mortality risk in older CKD patients: one model that predicts mortality in patients who chose dialysis and another model that predicts mortality in patients who chose CC. By calculating individual mortality risks, we hope to facilitate the shared decision process in which benefits and burdens that come with dialysis and CC are considered.

MATERIALS AND METHODS

Study design and population

The Transparent reporting of a multivariable prediction model for individual prognosis or diagnosis (TRIPOD) statement was followed for the reporting and methods of this study (see [Supplementary data](#)) [13]. The study population is a retrospective cohort of patients aged ≥ 70 years with CKD Stage 4/5, who received nephrology care at a non-academic teaching hospital in the Netherlands [4, 14]. Patients were included when the choice for dialysis or CC was registered in the patient file. As standard care, the physician initiated a shared decision-making process on the preference for dialysis or CC when the estimated glomerular filtration rate (eGFR) dropped to < 20 mL/min/ 1.73 m². Patients received counselling on different treatment pathways from a multidisciplinary team. Baseline is defined as the time of treatment choice; this means that not all patients in

the dialysis group started dialysis during follow-up and some died before initiation. Likewise, in the CC group, patients could still choose to initiate dialysis. Analyses were performed in an intention-to-treat fashion, based on the baseline treatment choice. Inclusion was between 31 October 2004 and 1 May 2016. Exclusion criteria were age < 70 years, acute kidney failure or no recorded treatment decision. The study design and population have previously been described in more detail [4, 14]. The study was approved by the local research ethics committee.

Data collection

Baseline data including patient history, clinical parameters and laboratory values were collected from electronic medical records at the time of treatment decision. The eGFR was calculated using the Chronic Kidney Disease Epidemiology Collaboration (CKD-EPI) Creatinine formula. If laboratory or clinical parameters were not recorded at baseline, the most recent measurement was included within 3 weeks. Definitions of collected predictors are given in [Supplementary data](#).

Predictors and outcome

From the baseline characteristics, a subset of predictors was chosen based on previous literature and clinical expertise of the study group [15, 16]. Aetiological studies in conservatively treated patients, and models predicting mortality in dialysis patients, were considered [5, 11, 15–17]. Three clinical experts (W.J.W.B., W.R.V. and M.v.B.) were asked to rank a list of 13 candidate predictors in order of importance. A basic model with the top 5 predictors and an extended model with the top 10 predictors (with a total of 10 degrees of freedom) were selected based on the expert ranking and consensus meeting (expert ranking and candidate predictors shown in [Supplementary data](#)). The goal of this selection method was to prevent overfitting while retaining enough variables for an accurate prediction [18, 19]. The outcome of the prediction model was 2-year mortality, selected based on clinical relevance and optimization of sample size. Follow-up data on death were available until 20 February 2019.

Statistical analysis

Continuous baseline characteristics are presented as mean values with standard deviations (SDs) or median values with interquartile ranges when not normally distributed. Categorical variables are presented as numbers with percentages.

Missing data were assumed to be largely missing at random. To correct for missing data, a 10-fold multiple imputation with fully conditional specification was performed using the R package 'mice'. All candidate predictors and the outcome were included in the imputation model [20, 21]. The selected predictors were entered into a logistic regression model [22]. The risk models were internally validated and adjusted for overfitting by performing a 250-fold bootstrap analysis in each imputation data set [23]. The prognostic index (PI) can be calculated with the models estimated coefficients (β), individual predictor values (x) and the model constant (a), as $PI = a + x_1 \times \beta_1$. With this PI, the mortality risk (P) can be calculated as $P = e^{PI} / (1 + e^{PI})$.

The predictive performance of the models was assessed by determining the discrimination and calibration. Discrimination is shown by the C-statistic and indicates how well the model can distinguish between people with and without the outcome. Optimism-corrected C-statistics were calculated with

bootstrapping and pooled over the 10 imputation data sets with Rubin's Rules [24]. The calibration is an absolute measure for the accuracy of the predicted probabilities and can be summarized in a calibration slope, intercept, calibration-in-the-large and calibration plot. The optimism-corrected slope and intercept were calculated in the bootstrapped samples. A calibration slope <1 in internal validation implicates overfitting and to correct for this the regression coefficients are shrunk by multiplying them by the slope. The calibration-in-the-large is the observed risk of mortality in the whole population compared with the predicted risk. A calibration plot shows the predicted risk plotted against the observed risk per decile of predicted probability, augmented by a smoothed (loess) regression line [25]. The 45° line indicates perfect agreement between predicted and observed risks. The shrinkage-adjusted coefficients form the final model and were pooled over the imputed data sets by calculating the mean [24]. The shrunken models were then applied for all patients to calculate probability differences between the dialysis and CC models. All analyses were performed in R version 3.5.1.

RESULTS

Baseline characteristics

A total of 366 patients were included. Of these patients, 240 had the intention to start dialysis in the future and 126 had chosen CC. Baseline characteristics stratified by outcome (2-year mortality) are shown in Tables 1 and 2. Most data were complete, with

missing data for serum albumin, C-reactive protein (CRP) and body mass index. In the dialysis group, patients who died within 2 years were more often male, had considerably more cardiovascular disease, had slightly more malignancies and diabetes, and had a higher CRP at baseline. In the CC group, patients who died within 2 years were more often male, less often diabetic, had more cardiovascular disease and had a considerably lower eGFR at baseline than patients who survived >2 years. When comparing the dialysis group to the CC group, the largest differences are seen for age and gender; the CC group was 6 years older on average, and had a higher percentage of females.

Follow-up data

All patients were followed for a minimum of 2 years or until death or loss to follow-up. The median time of follow-up was 37 [interquartile range (IQR) 17–58] months in the dialysis group and 17 (IQR 9–34) months in the CC group. In the dialysis group, 78 patients (33%) died within 2 years, and in the CC group 71 patients (56%). In total, seven patients were lost to follow-up and three patients received kidney transplantation; these patients were assumed to survive for 2 years. In the group that chose dialysis, a total of 146 (61%) patients initiated dialysis within the follow-up time; of these patients, 115 initiated haemodialysis and 31 peritoneal dialysis. Dialysis initiation took place after a median of 5 (IQR 2–14) months. In the CC group, two patients eventually initiated haemodialysis. As this information is not yet known at time of prediction, these patients remained in the CC group.

Table 1. Baseline characteristics, recorded at treatment decision for the dialysis choice group

| | Total n = 240 | >2 years survival n = 162 | ≤2 years survival n = 78 |
|---|------------------|---------------------------------|--------------------------------|
| Age (years) | 76 (72–79) | 75 (72–78) | 77 (73–81) |
| Male gender, n (%) | 160 (67) | 105 (65) | 55 (71) |
| Primary kidney disease, n (%) | | | |
| Vascular disease | 103 (43) | 72 (44) | 31 (40) |
| Diabetes mellitus | 40 (17) | 27 (17) | 13 (17) |
| Other | 39 (16) | 27 (17) | 12 (15) |
| Unknown | 58 (24) | 36 (22) | 22 (28) |
| Comorbidities, n (%) | | | |
| Cardiovascular disease | 176 (73) | 105 (65) | 71 (91) |
| Ischaemic heart disease | 109 (45) | 64 (40) | 45 (58) |
| Left ventricular dysfunction | 67 (30) | 29 (18) | 38 (49) |
| Peripheral vascular disease | 111 (46) | 61 (38) | 50 (64) |
| Malignancy | 26 (11) | 16 (10) | 10 (13) |
| Diabetes mellitus | 95 (40) | 62 (38) | 33 (42) |
| Laboratory parameters | | | |
| eGFR (mL/min/1.73 m ²) | 11.7 (4.0) | 11.7 (3.8) | 11.9 (4.5) |
| Serum albumin (g/L) ^a | 39.2 (4.6) | 40.0 (3.8) | 37.4 (5.6) |
| CRP (nmol/L) ^a | 48 (29–95) | 48 (21–57) | 76 (29–167) |
| Clinical parameter | | | |
| Body mass index (kg/m ²) ^a | 27.0 (4.5) | 27.2 (4.6) | 26.4 (4.4) |

Normally distributed continuous variables are presented as mean (SD), not normally distributed continuous values are presented as median (IQR). Categorical variables are presented as n (%). Serum albumin can be converted to mmol/L by multiplying by 0.0150. CRP can be converted to mg/L by multiplying by 0.105.

^aFor the variables serum albumin, CRP and body mass index, 54 (23%), 67 (28%) and 44 (18%) patients had missing data, respectively.

Table 2. Baseline characteristics, recorded at treatment decision for the CC group

| | Total n = 126 | >2 years survival n = 55 | ≤2 years survival n = 71 |
|---|------------------|--------------------------------|--------------------------------|
| Age (years) | 82 (79–86) | 82 (78–86) | 83 (80–86) |
| Male gender, n (%) | 68 (54) | 25 (46) | 43 (61) |
| Primary kidney disease, n (%) | | | |
| Vascular disease | 65 (52) | 27 (49) | 38 (54) |
| Diabetes mellitus | 16 (13) | 7 (13) | 9 (13) |
| Other | 15 (12) | 10 (18) | 5 (7) |
| Unknown | 30 (24) | 11 (20) | 19 (27) |
| Comorbidities, n (%) | | | |
| Cardiovascular disease | 97 (77) | 38 (69) | 59 (83) |
| Ischaemic heart disease | 56 (44) | 21 (38) | 35 (49) |
| Left ventricular dysfunction | 34 (27) | 8 (15) | 26 (37) |
| Peripheral vascular disease | 64 (51) | 23 (42) | 41 (58) |
| Malignancy | 17 (14) | 6 (11) | 11 (16) |
| Diabetes mellitus | 57 (45) | 27 (49) | 30 (42) |
| Laboratory parameters | | | |
| eGFR (mL/min/1.73 m ²) | 13.4 (4.5) | 15.1 (4.5) | 12.1 (4.1) |
| Serum albumin (g/L) ^a | 38.8 (3.5) | 39.8 (2.4) | 38.1 (4.0) |
| CRP (nmol/L) ^a | 48 (29–124) | 48 (19–110) | 52 (31–124) |
| Clinical parameter | | | |
| Body mass index (kg/m ²) ^a | 26.2 (4.8) | 27.3 (5.3) | 25.1 (4.0) |

Normally distributed continuous variables are presented as mean (SD), not normally distributed continuous values are presented as median (IQR). Categorical variables are presented as n (%).

^aFor the variables serum albumin, CRP and body mass index, 17 (13%), 33 (26%) and 28 (22%) patients had missing data, respectively.

Table 3. Final multivariate models after internal validation

| Predictors measured at baseline | Shrunken regression coefficients (bootstrap corrected β s) | | | |
|--|--|-------------------------|----------------|-------------------|
| | Basic dialysis model | Extended dialysis model | Basic CC model | Extended CC model |
| Age (per year) | 0.0703 | 0.0737 | 0.0142 | 0.0374 |
| eGFR (per mL/min/1.73 m ²) | -0.0049 | 0.0214 | -0.1381 | -0.1049 |
| Malignancy present | 0.1699 | -0.1185 | 0.5845 | 0.4742 |
| Diabetes mellitus present | 0.2792 | 0.0470 | -0.1984 | -0.1753 |
| Cardiovascular disease present | 1.4198 | - | 0.8335 | - |
| Ischaemic heart disease | - | 0.3588 | - | -0.0843 |
| Left ventricular dysfunction | - | 1.1720 | - | 1.2749 |
| Peripheral vascular disease | - | 1.0187 | - | 0.7225 |
| Gender (female) | - | -0.0245 | - | -0.1839 |
| Serum albumin (per g/L) | - | -0.0820 | - | -0.0927 |
| CRP (per nmol/L) | - | 0.0015 | - | 0.0012 |
| Constant | -7.2953 | -4.6099 | 0.3387 | 1.5472 |

Basic conservative care model**Calculation example**

Patient 1: 70 years, eGFR of 10, no malignancy diabetes mellitus, no cardiovascular disease.

Prognostic Index:

$$0.3387 + 0.0142 \times 70 - 0.1381 \times 10 + 0.5845 \times 0 - 0.1984 \times 1 + 0.8335 \times 0 = -0.2467$$

Probability of death within 2 years:

$$e^{-0.2467} / (1 + e^{-0.2467}) = 0.4386 = 44\%$$

FIGURE 1: Calculation example.

Model development

The following predictors were chosen for the basic models in dialysis and CC patients: age, eGFR, active malignancy, diabetes mellitus and the presence of cardiovascular disease. In the extended models, the following predictors were added: gender, serum albumin and CRP at baseline. The predictor cardiovascular disease was split into the presence of ischaemic heart disease, left ventricular dysfunction and peripheral vascular disease for the extended model. The selected predictors were entered into logistic regression models; a basic model and an extended model were developed to predict mortality on both dialysis and CC.

Model validation and performance

The four developed models were internally validated with bootstrapping. The shrunken regression coefficients of these final models are given in Table 3. Figure 1 gives an example of how to calculate an individual's mortality probability based on these models. The models' discrimination is shown in Table 4. The optimism-corrected C-statistics of the basic and extended dialysis models were 0.675 and 0.750, respectively. The basic and extended CC models had an optimism-corrected C-statistic of 0.677 and 0.729. Overall, the C-statistics reflected a moderate discriminatory capacity.

The models' calibration slopes, intercepts and calibration-in-the-large are shown in Table 5. The internal validation slopes range from 0.665 to 0.844 and the intercepts from -0.112 to 0.084, indicating a considerable level of overfitting in the apparent models before shrinkage. In Figure 2, the calibration plots are shown after correction for this overfitting. Overall, these

Table 4. Discrimination of models before and after internal validation

| | Apparent C-statistic | Optimism-corrected C-statistic |
|-------------------------|----------------------|--------------------------------|
| Basic dialysis model | 0.705 | 0.675 |
| Extended dialysis model | 0.790 | 0.750 |
| Basic CC model | 0.719 | 0.677 |
| Extended CC model | 0.797 | 0.729 |

showed a moderate to good calibration. The CC models showed a large range of predicted risks, indicating the models' ability to distinguish patients with a low and high absolute risk of mortality.

In Table 6, the probabilities calculated by the developed models are shown for three hypothetical patients. To facilitate comparison of the predicted risk for dialysis versus CC, probability differences (mortality probability on CC minus mortality probability on dialysis) were computed. Probability differences were computed in the whole population of 366 patients and ranged from -33% to 59% (meaning a 33% higher risk of mortality on dialysis compared with CC, and a 59% lower risk of mortality on dialysis, respectively). In Figure 3, this large range of probability differences is visualized in a histogram, stratified by actual treatment choice. In total, 35 patients had a probability difference of 0% or smaller, indicating a predicted survival advantage for a CC choice. Of these 35 patients, 26 had also chosen CC in reality. A total of 331 patients had a predicted probability difference >0%, indicating a predicted survival advantage on dialysis. In total, 231 patients of these 331 had also chosen dialysis as treatment. For the 100 patients in this group who chose CC, this prediction was not known at the time of treatment choice and it is unclear to what extent it would have influenced this choice, as many patients chose CC based on an expected lower treatment burden.

DISCUSSION

Four models were developed that predict 2-year mortality for a dialysis and CC treatment pathway in the same patient, and can thereby act as a prediction tool for patients aged ≥ 70 years with advanced CKD. The performance of the models was moderate to good in terms of discrimination and calibration.

Table 5. Model calibration after internal validation

| | Calibration slope | Calibration intercept | Calibration-in-the-large (observed versus expected) |
|-------------------------|-------------------|-----------------------|--|
| Basic dialysis model | 0.844 | -0.084 | 32.5% versus 32.6% |
| Extended dialysis model | 0.799 | -0.112 | 32.5% versus 32.6% |
| Basic CC model | 0.796 | 0.052 | 56.3% versus 56.5% |
| Extended CC model | 0.665 | 0.068 | 56.3% versus 56.3% |

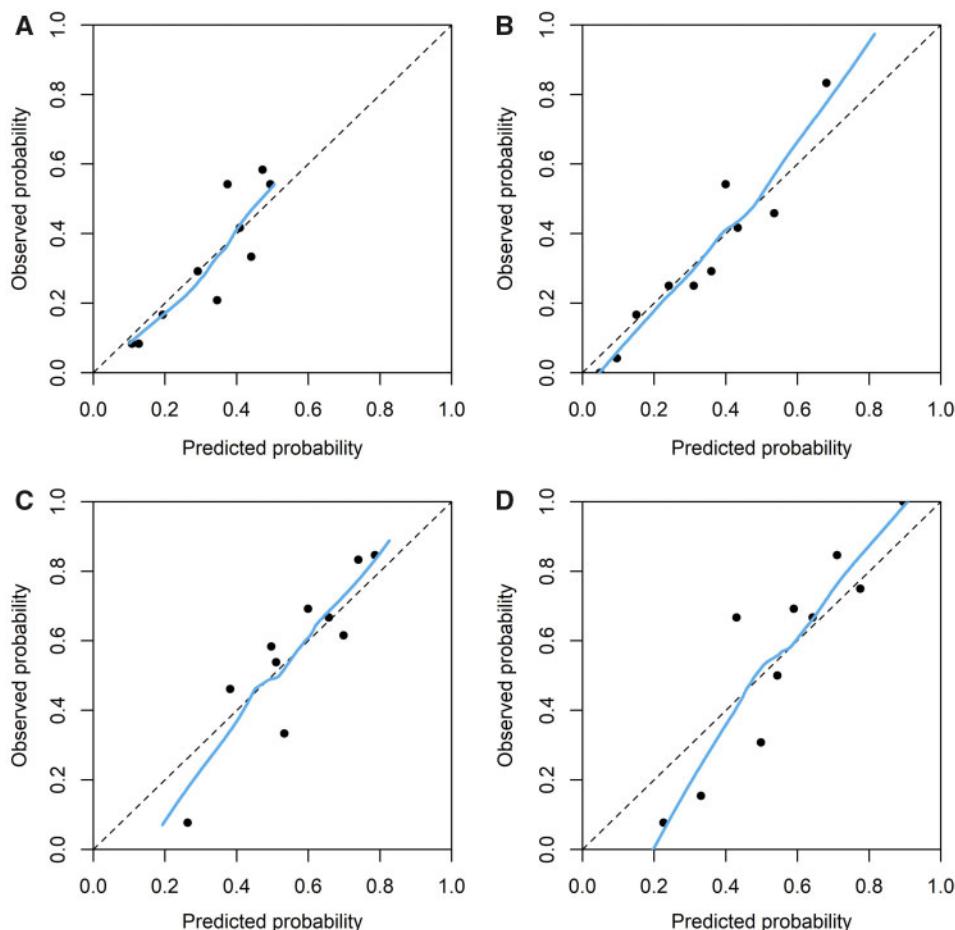


FIGURE 2: Calibration plots of predicted probability (calculated with shrinkage adjusted prediction models). (A) Basic dialysis model, (B) extended dialysis model, (C) basic CC model and (D) extended CC model.

However, as this is a small single-centre patient population, further studies are needed to confirm validity of the developed tools in other populations. After external validation, this prediction tool could be used to calculate individually tailored mortality risks, identifying patients who might benefit from dialysis or CC in terms of survival and improving patient discussions surrounding the treatment decision.

To our knowledge, this is the first study to predict mortality on dialysis and CC at the time of treatment decision. Though robust prediction models for mortality on dialysis exist, most predict mortality shortly before or after dialysis initiation [11]. The often-used 'surprise question' model was developed on prevalent haemodialysis patients [26]. As of now, the European Renal Best Practice Group recommends using the Renal Epidemiology and Information Network (REIN) score to

improve decision-making surrounding KRT choice [27, 28]. The REIN study developed a score that predicts mortality within 3 months after dialysis initiation in older patients [28]. Although these models are relevant for providing dialysis patients with individualized prognosis, they predict after dialysis start, meaning that the included patients survived up to this time point. Therefore, as the authors of the REIN score also point out, the transportability of these models to advanced CKD patients who have yet to decide on a treatment strategy is unsure [28]. Multiple studies have compared survival in patients treated with dialysis and CC from an aetiological perspective and demonstrated a limited survival benefit of dialysis in patients with higher age and more comorbidities [8, 14, 29]. However, no mortality prediction model for patients on CC has previously been developed.

Table 6. Example patients with corresponding mortality probabilities

| | | Predictors | Patient 1 | Patient 2 | Patient 3 | | |
|--|-------------|--|-----------|-----------|-----------|-----|-----|
| Extended model | Basic model | Age (per year) | 70 | 80 | 80 | | |
| | | eGFR (per mL/min/1.73 m ²) | 10 | 15 | 20 | | |
| | | Malignancy present | No | No | No | | |
| | | Diabetes mellitus present | Yes | No | Yes | | |
| | | Cardiovascular disease present | No | Yes | Yes | | |
| | | Ischaemic heart disease | No | No | Yes | | |
| | | Left ventricular dysfunction | No | No | No | | |
| | | Peripheral vascular disease | No | Yes | Yes | | |
| | | Gender | Male | Female | Male | | |
| | | Serum albumin (per g/L) | 32 | 35 | 40 | | |
| | | CRP (nmol/L) | 40 | 29 | 19 | | |
| | | Probability of death within 2 years | | | | | |
| | | Basic dialysis model | | | 10% | 42% | 48% |
| Basic CC model | | | 44% | 56% | 34% | | |
| Probability difference (CC minus dialysis) | | | 34% | 14% | -14% | | |
| Extended dialysis model | | | 15% | 44% | 47% | | |
| Extended CC model | | | 51% | 57% | 31% | | |
| Probability difference (CC minus dialysis) | | | 36% | 13% | -16% | | |

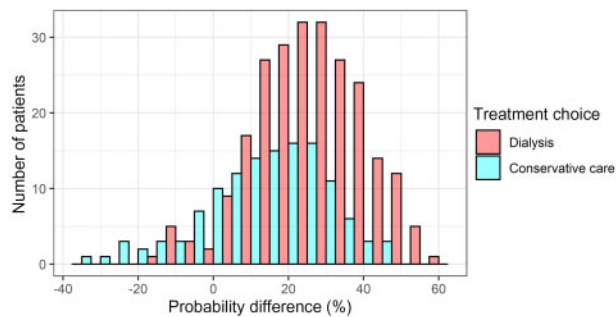


FIGURE 3: Histogram of probability differences stratified by treatment choice. The difference was calculated by subtracting the mortality probability on dialysis care from the probability on CC. A difference larger than 0% indicates a predicted survival benefit for dialysis choice and smaller than 0% indicates a predicted survival benefit for CC.

In current treatment decision-making, many older patients feel they lack a choice between dialysis and CC, and in some cases, patients are not informed about treatment alternatives to dialysis at all [30, 31]. Although surveys show that CKD patients want life-expectancy information, whether good or bad, many patients experience a paucity of prognosis information [30, 32–34]. Studies show that nephrologists often have difficulty communicating information on prognosis and disease progression to patients and are rarely trained to do so [32, 35–37]. A prediction tool can inform discussions surrounding these treatment choices and expected prognoses, bringing clinical practice closer to patients' wants and needs.

The study has a number of limitations. Though it is one of the largest studies including CC patients, the sample size is still quite small for the development of prediction models. A small sample size increases the risk of overfitting, meaning that the models would perform more poorly on new patients. We tried to limit overfitting by pre-selecting predictors instead of using data-driven selection procedures. Also, bootstrapping was performed as internal validation, as this method makes the best use of the available sample size [38]. Secondly, the data were collected in a single centre, which also increases the risk of

overfitting. Both these limitations raise doubt on how well the developed models will perform in new patients. Therefore, It is crucial that these models are tested in other patients before use. This external validation should be performed in various centres and other countries to establish the performance in various populations.

Another limitation is the fact that patients in the dialysis and CC groups are not completely interchangeable. The prediction tool's calculated difference in prognosis may not be entirely due to the treatment choice, but might be due to other differences between the dialysis and CC patient groups. There are many reasons why patients choose dialysis or CC. Some of these reasons may affect prognosis and others may not. We can speculate that personal values and preferences surrounding quality of life and life prolongment would not affect differences in prognosis. However, characteristics such as age and comorbidity can influence both the treatment choice and prognosis. We ensured that such major relevant differences in baseline characteristics were included as predictors and thereby taken into account. Ideally, this study would be performed on randomized controlled trial data as this would ensure that prognosis differences between dialysis and CC are fully caused by the treatment allocation. However, such a trial comparing CC to dialysis has not been completed thus far. Nonetheless, the individualized predictions in this study are more accurate than simply giving the average prognosis in all dialysis or CC patients, which is current practice.

The main strength of the study is that it is the first of its kind, and makes use of rare data in which patients' treatment decisions are explicitly documented after the patients have taken part in an established process of shared decision-making, and improve the usability of our models. The accurate recording of treatment decision time point is of great importance as this is the clinically relevant time at which to predict and compare prognoses. By using an intention-to-treat method in which patients were categorized into the dialysis or CC group based on their treatment intention, we follow the clinical practice surrounding KRT decision-making. Furthermore, the study was performed in line with the newest methodological recommendations concerning prediction model development [13].

Taking the above-mentioned limitations into account, we would strongly discourage clinical use until the prediction tool has been externally validated. Even then, the developed models are only meant for patients who are eligible for both dialysis and CC, and are ≥ 70 years old, and we cannot be certain that the difference in predicted prognosis on dialysis and CC is solely due to this treatment choice. This prediction tool should never be used to determine treatment eligibility. It is meant to provide more accurate information on mortality to patients who are considering both treatment options, in order to contribute to an informed decision. Further qualitative studies should be performed to investigate how this prognosis information can best be presented to the patient. However, we do believe that this study is an important first step towards predicting prognosis for these two possible treatment pathways at a time point that is relevant to both patient and physician.

Finally, as previously mentioned, external validation is of great importance before these models are implemented. Testing these models in an external population will ensure accuracy, and allow for updating or recalibration. Not all variables associated with mortality were available in our cohort. Future studies could investigate whether predictors such as frailty, cognition, mobility, dialysis modality or rate of eGFR decline could improve model performance. Future research should also focus on predicting other outcomes such as quality of life, as an expected improved quality of life and more hospital-free days are some of the main benefits of CC over dialysis [14, 39, 40].

In conclusion, we have developed and internally validated a prediction tool that provides individualized 2-year mortality risks on CC and dialysis treatment in older patients with advanced CKD. Future studies should test the prediction tool in other patients before use. After external validation, individualized predictions of mortality, combined with expected quality of life and patient preferences, can be of value in shared decision-making when weighing the potential burdens and benefits of dialysis and CC.

SUPPLEMENTARY DATA

Supplementary data are available at [ckj online](https://ckjonline.com).

FUNDING

The work on this study by W.R.V. and W.J.W.B. and data collection was funded by unrestricted grants from the St Antonius Research Fund, from Roche to the St Antonius Research Fund and from Zilveren Kruis, Insurance Company. The work on this study by M.v.D. was supported by a grant from the Dutch Kidney Foundation (16OKG12). The funders played no role in study design; collection, analysis and interpretation of data; writing of the report; or in the decision to submit the report for publication.

AUTHORS' CONTRIBUTIONS

C.L.R., F.W.D., W.J.W.B. and M.v.D. contributed to the research idea and study design; W.R.V. contributed to data acquisition; C.L.R., W.R.V., M.v.B., F.W.D., W.J.W.B. and M.v.D. contributed to data analysis/interpretation; C.L.R. performed the statistical analysis; F.W.D., W.J.W.B. and M.v.D. contributed to supervision. Each author contributed important intellectual content during manuscript drafting or revision and accepts accountability for the overall work by ensuring that questions pertaining to the

accuracy or integrity of any portion of the work are appropriately investigated and resolved.

CONFLICT OF INTEREST STATEMENT

None declared. All authors declare no support from any organization for the submitted work; no financial relationships with any organizations that might have an interest in the submitted work in the previous 3 years; no other relationships or activities that could appear to have influenced the submitted work. The results presented in this paper have not been published previously in whole or part, except in abstract form.

REFERENCES

- van Walraven C, Manuel DG, Knoll G. Survival trends in ESRD patients compared with the general population in the United States. *Am J Kidney Dis* 2014; 63: 491–499
- Eckardt KU, Coresh J, Devuyst O et al. Evolving importance of kidney disease: from subspecialty to global health burden. *Lancet* 2013; 382: 158–169
- Burns A, Carson R. Maximum conservative management: a worthwhile treatment for elderly patients with renal failure who choose not to undergo dialysis. *J Palliat Med* 2007; 10: 1245–1247
- Verberne WR, Geers AB, Jellema WT et al. Comparative survival among older adults with advanced kidney disease managed conservatively versus with dialysis. *Clin J Am Soc Nephrol* 2016; 11: 633–640
- Wongrakpanich S, Susantitaphong P, Isaranuwatthai S et al. Dialysis therapy and conservative management of advanced chronic kidney disease in the elderly: a systematic review. *Nephron* 2017; 137: 178–189
- Ramer SJ, McCall NN, Robinson-Cohen C et al. Health outcome priorities of older adults with advanced CKD and concordance with their nephrology providers' perceptions. *J Am Soc Nephrol* 2018; 29: 2870–2878
- Couchoud C, Hemmelgarn B, Kotanko P et al. Supportive care: time to change our prognostic tools and their use in CKD. *Clin J Am Soc Nephrol* 2016; 11: 1892–1901
- Kurella Tamura M, Desai M, Kappahh KI et al. Dialysis versus medical management at different ages and levels of kidney function in veterans with advanced CKD. *J Am Soc Nephrol* 2018; 29: 2169–2177
- Jassal SV, Kelman EE, Watson D. Non-dialysis care: an important component of care for elderly individuals with advanced stages of chronic kidney disease. *Nephron Clin Pract* 2011; 119: c5–c9
- Yoshino M, Kuhlmann MK, Kotanko P et al. International differences in dialysis mortality reflect background general population atherosclerotic cardiovascular mortality. *J Am Soc Nephrol* 2006; 17: 3510–3519
- Ramspek CL, Voskamp PW, van Ittersum FJ et al. Prediction models for the mortality risk in chronic dialysis patients: a systematic review and independent external validation study. *Clin Epidemiol* 2017; 9: 451–464
- Villain C, Fouque D. Choosing end-stage kidney disease treatment with elderly patients: are data available? *Nephrol Dial Transplant* 2019; 34: 1432–1435
- Collins GS, Reitsma JB, Altman DG et al. Transparent reporting of a multivariable prediction model for individual prognosis or diagnosis (TRIPOD): the TRIPOD statement. *BMJ* 2015; 350: g7594

14. Verberne WR, Dijkers J, Kelder JC et al. Value-based evaluation of dialysis versus conservative care in older patients with advanced chronic kidney disease: a cohort study. *BMC Nephrol* 2018; 19: 205
15. Floege J, Gillespie IA, Kronenberg F et al. Development and validation of a predictive mortality risk score from a European hemodialysis cohort. *Kidney Int* 2015; 87: 996–1008
16. Holme I, Fellstrom BC, Jardin AG et al. Prognostic model for total mortality in patients with haemodialysis from the Assessments of Survival and Cardiovascular Events (AURORA) study. *J Intern Med* 2012; 271: 463–471
17. Foote C, Kotwal S, Gallagher M et al. Survival outcomes of supportive care versus dialysis therapies for elderly patients with end-stage kidney disease: a systematic review and meta-analysis. *Nephrology (Carlton)* 2016; 21: 241–253
18. Vittinghoff E, McCulloch CE. Relaxing the rule of ten events per variable in logistic and Cox regression. *Am J Epidemiol* 2007; 165: 710–718
19. Courvoisier DS, Combescure C, Agoritsas T et al. Performance of logistic regression modeling: beyond the number of events per variable, the role of data structure. *J Clin Epidemiol* 2011; 64: 993–1000
20. de Goeij MC, van Diepen M, Jager KJ et al. Multiple imputation: dealing with missing data. *Nephrol Dial Transplant* 2013; 28: 2415–2420
21. van Buuren S. Multiple imputation of discrete and continuous data by fully conditional specification. *Stat Methods Med Res* 2007; 16: 219–242
22. Royston P, Moons KG, Altman DG et al. Prognosis and prognostic research: developing a prognostic model. *BMJ* 2009; 338: b604–b604
23. Moons KG, Kengne AP, Woodward M et al. Risk prediction models: I. Development, internal validation, and assessing the incremental value of a new (bio)marker. *Heart* 2012; 98: 683–690
24. Rubin DB. *Multiple Imputation for Nonresponse in Surveys*. New York, NY: Wiley, 1987.
25. Austin PC, Steyerberg EW. Graphical assessment of internal and external calibration of logistic regression models by using loess smoothers. *Statist Med* 2014; 33: 517–535
26. Cohen LM, Ruthazer R, Moss AH et al. Predicting six-month mortality for patients who are on maintenance hemodialysis. *Clin J Am Soc Nephrol* 2010; 5: 72–79
27. Findlay A, Farrington K, Joosten H et al. Clinical Practice Guideline on management of older patients with chronic kidney disease stage 3b or higher (eGFR<45 mL/min/1.73 m²): a summary document from the European Renal Best Practice Group. *Nephrol Dial Transplant* 2017; 32: 9–16
28. Couchoud CG, Beuscart JB, Aldigier JC et al. Development of a risk stratification algorithm to improve patient-centered care and decision making for incident elderly patients with end-stage renal disease. *Kidney Int* 2015; 88: 1178–1186
29. Brown MA, Collett GK, Josland EA et al. CKD in elderly patients managed without dialysis: survival, symptoms, and quality of life. *Clin J Am Soc Nephrol* 2015; 10: 260–268
30. Ladin K, Lin N, Hahn E et al. Engagement in decision-making and patient satisfaction: a qualitative study of older patients' perceptions of dialysis initiation and modality decisions. *Nephrol Dial Transplant* 2017; 32: 1394–1401
31. Llewellyn H, Low J, Smith G et al. Narratives of continuity among older people with late stage chronic kidney disease who decline dialysis. *Soc Sci Med* 2014; 114: 49–56
32. Schell JO, Patel UD, Steinhauser KE et al. Discussions of the kidney disease trajectory by elderly patients and nephrologists: a qualitative study. *Am J Kidney Dis* 2012; 59: 495–503
33. Fine A, Fontaine B, Kraushar MM et al. Nephrologists should voluntarily divulge survival data to potential dialysis patients: a questionnaire study. *Perit Dial Int* 2005; 25: 269–273
34. Singh P, Germain MJ, Cohen L et al. The elderly patient on dialysis: geriatric considerations. *Nephrol Dial Transplant* 2014; 29: 990–996
35. Davison SN, Jhangri GS, Holley JL et al. Nephrologists' reported preparedness for end-of-life decision-making. *Clin J Am Soc Nephrol* 2006; 1: 1256–1262
36. Schell JO, Green JA, Tulskey JA et al. Communication skills training for dialysis decision-making and end-of-life care in nephrology. *Clin J Am Soc Nephrol* 2013; 8: 675–680
37. Wachterman MW, Marcantonio ER, Davis RB et al. Relationship between the prognostic expectations of seriously ill patients undergoing hemodialysis and their nephrologists. *JAMA Intern Med* 2013; 173: 1206–1214
38. Austin PC, Steyerberg EW. Events per variable (EPV) and the relative performance of different strategies for estimating the out-of-sample validity of logistic regression models. *Stat Methods Med Res* 2017; 26: 796–808
39. Morton RL, Snelling P, Webster AC et al. Factors influencing patient choice of dialysis versus conservative care to treat end-stage kidney disease. *CMAJ* 2012; 184: E277–E283
40. Verberne WR, Das-Gupta Z, Allegretti AS et al. Development of an international standard set of value-based outcome measures for patients with chronic kidney disease: a report of the International Consortium for Health Outcomes Measurement (ICHOM) CKD Working Group. *Am J Kidney Dis* 2019; 73: 372–384