



Universiteit
Leiden

The Netherlands

Risk stratification in Dutch primary care: a promising approach to manage population health

Girwar, S.M.

Citation

Girwar, S. M. (2023, June 22). *Risk stratification in Dutch primary care: a promising approach to manage population health*. Retrieved from <https://hdl.handle.net/1887/3621320>

Version: Publisher's Version

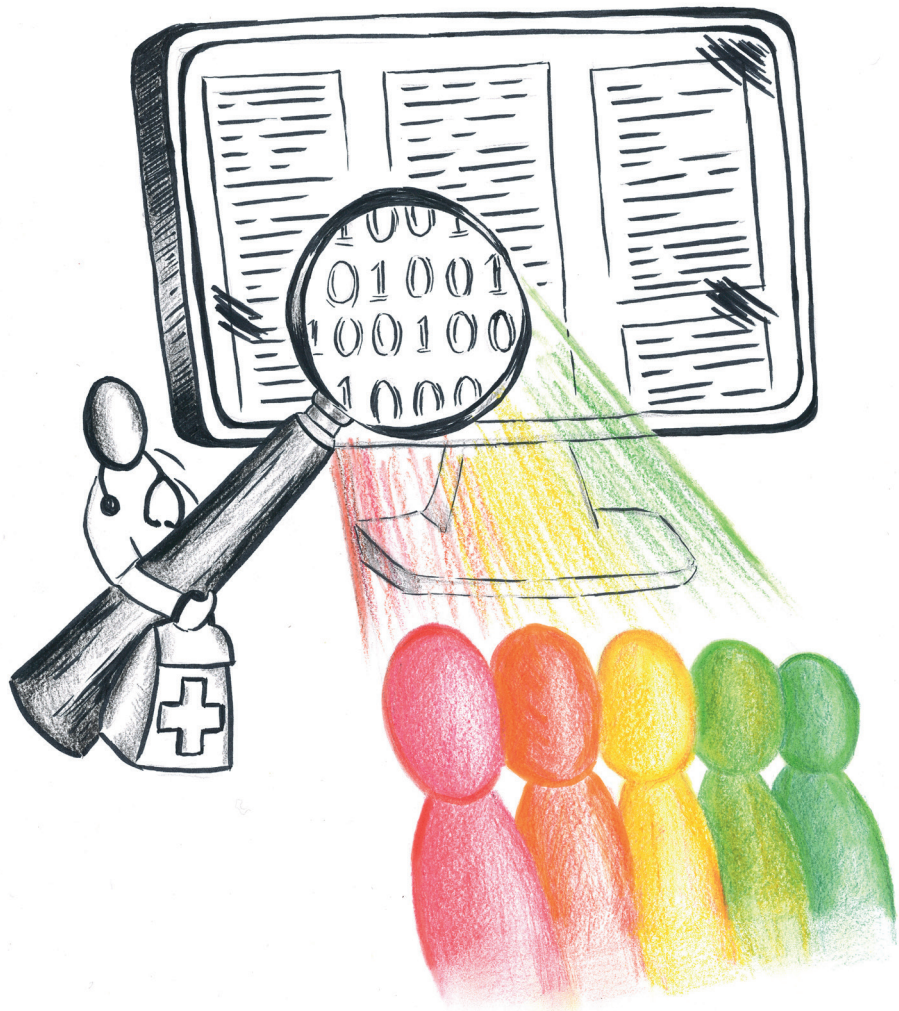
License: [Licence agreement concerning inclusion of doctoral thesis in the Institutional Repository of the University of Leiden](#)

Downloaded from: <https://hdl.handle.net/1887/3621320>

Note: To cite this publication please use the final published version (if applicable).

RISK STRATIFICATION IN DUTCH PRIMARY CARE

A Promising Approach to Manage Population Health



Shelley-Ann Girwar