



Universiteit  
Leiden  
The Netherlands

## Targets for improving patient outcomes after major gastrointestinal cancer surgery: the value of perioperative care

Kooten, R.T. van

### Citation

Kooten, R. T. van. (2023, June 15). *Targets for improving patient outcomes after major gastrointestinal cancer surgery: the value of perioperative care*. Retrieved from <https://hdl.handle.net/1887/3620458>

Version: Publisher's Version

License: [Licence agreement concerning inclusion of doctoral thesis in the Institutional Repository of the University of Leiden](#)

Downloaded from: <https://hdl.handle.net/1887/3620458>

**Note:** To cite this publication please use the final published version (if applicable).



## Chapter 5

# Computer Tomography-based Preoperative Muscle Measurements as Prognostic Factors for Anastomotic Leakage Following Oncological Sigmoid and Rectal Resections

Robert T. van Kooten MD<sup>1</sup>, Cor J. Ravensbergen MD<sup>1\*</sup>, Sophie van Büseck BSc<sup>1</sup>, Willem Grootjans PhD<sup>2</sup>, Koen C.M.J. Peeters MD PhD<sup>1</sup>, Jan Heemskerk PhD<sup>2</sup>, Michel W.J.M. Wouters MD PhD<sup>3,4</sup>, Ana Navas Cañete MD<sup>4</sup> and Rob A.E.M. Tollenaar MD PhD<sup>1</sup>

---

<sup>1</sup> Department of Surgery, Leiden University Medical Center, Leiden, the Netherlands

<sup>2</sup> Department of Radiology, Leiden University Medical Center, Leiden, the Netherlands

<sup>3</sup> Department of Biomedical Data Sciences, Leiden University Medical Center, Leiden, the Netherlands

<sup>4</sup> Department of Surgical Oncology, Netherlands Cancer Institute-Antoni van Leeuwenhoek, Amsterdam, the Netherlands

## List of Abbreviations

ASA; American Society of Anesthesiology, AUC; Area Under the Curve, BMI; Body Mass Index, CE; Contrast Enhanced, CRT; Chemoradiotherapy, CT; Computed Tomography, LAR; Low-Anterior Resection, OR; Odds Ratio, PMI; Psoas Muscle Index, ROC; Receiver Operating Characteristics, ROI; Region Of Interest, SMI; Skeletal Muscle Index, TAMA; Total Abdominal Muscle Area, TPA; Total Psoas Area

## Abstract

### Background

Oncological sigmoid and rectal resections are accompanied with substantial risk of anastomotic leakage. Preoperative risk assessment and patient selection remains difficult, highlighting the importance of finding easy-to-use parameters. This study evaluates the prognostic value of contrast enhanced (CE) computed tomography (CT)-based muscle measurements for predicting anastomotic leakage.

### Methods

Patients that underwent oncological sigmoid and rectal resections in the LUMC between 2016-2020 were included. Preoperative CE-CT scans, were analyzed using Vitrea software to measure total abdominal muscle area (TAMA) and total psoas area (TPA). Muscle areas were standardized using patient's height into: psoas muscle index (PMI) and skeletal muscle index (SMI) ( $\text{cm}^2/\text{m}^2$ ).

### Results

In total 46 patients were included, of which 13 (8.9%) suffered from anastomotic leakage. Patients with anastomotic leakage had a significantly lower PMI (22.1 vs. 25.1,  $p < 0.01$ ) and SMI (41.8 vs. 46.6,  $p < 0.01$ ). After adjusting for confounders (age and comorbidity), lower PMI (OR: 0.85, 95%CI 0.71-0.99,  $p = 0.03$ ) and SMI (OR: 0.93, 95%CI 0.86-0.99,  $p = 0.02$ ) were both associated with anastomotic leakage.

### Conclusion

This study showed that lower PMI and SMI were associated with anastomotic leakage. These results indicate that preoperative CT-based muscle measurements can be used as prognostic factor for risk stratification for anastomotic leakage.

## Introduction

Rectosigmoid resections are associated with a high risk of postoperative complications causing morbidity and mortality [1, 2]. Major complications occur in 15-18% of the patients, with anastomotic leakage being the most frequent with an incidence of up to 10% [3-5]. However, risk stratification is challenging, given that multiple studies have shown that a wide variety of factors correlate with risk of postoperative complications [6]. This highlights the importance of accurate prediction models, that use robust clinical parameters to assess frailty and the associated surgical risk for these patients [6, 7]. This is particularly important given that, with the increasing age of patients undergoing this type of surgery, the number of frail older adult patients increases [8]. Preoperative selection of frail patients and subsequent targeted interventions, such as physical prehabilitation programs, have been shown to be potentially beneficial, leading to a reduction of postoperative complication rates [9-11].

Recently, some studies are reporting that skeletal muscle and psoas muscle volumes can be used as a proxy for patient frailty [7]. Low skeletal muscle volume or psoas muscle volume is defined as sarcopenia, which can be relatively easily assessed using computed tomography (CT). Studies have shown that CT-based measurements of abdominal muscles, including the psoas muscle, have potential in predicting adverse outcome in surgical patients [12, 13].

This study explores the potential prognostic value and clinical use of CT-based preoperative muscle measurements, such as skeletal muscle index (SMI) and psoas muscle index (PMI) in an attempt to predict anastomotic leakage after oncological rectosigmoid resections.

## Methods

### Study Population and Treatment

All patients who underwent sigmoid or rectal resection for primary colorectal cancer in the Leiden University Medical Center (LUMC) between January 2016 and December 2020 were retrospectively included in this study. Exclusion criteria were: (temporary) construction of stoma during primary surgery, emergency surgery, palliative intended surgery, distant metastasis at time of diagnosis of the primary tumor and endoscopic resection. Patient characteristics (e.g., age, comorbidity) and clinical data (e.g., type of surgery, complications) were collected from the electronic medical record and the LUMC cancer registry. This study was approved by the Medical Ethics Committee of the LUMC (ID number G21.093).

### Computer Tomography-based Measurements

All included patients had a preoperative contrast enhanced (CE) abdominal CT in portal venous phase of no more than 3 months before surgery. Analysis of CT-scans was performed using Vitrea (version 7.14.2.227, Canon Medical, USA). Muscle areas were determined by manually segmenting a region of interest (ROI) in the skeletal- and psoas muscles on the portovenous phase of the CE-CT images. The CT slice at the level of the inferior part of L3 was chosen for analysis, which is conform the criteria of previous studies [7, 13]. Subsequently, the skeletal muscles and psoas muscle areas determined from the segmented ROIs (mm<sup>2</sup>) [7, 13, 14]. Total abdominal muscle area (TAMA) was categorized into specific abdominal muscle groups; psoas muscles, back muscles (erector spinae and quadratus lumborum muscles), lateral muscle (external- and internal oblique and transversus abdominis) and rectus abdominis (Fig. 1). Additionally, total psoas area (TPA) was calculated by the sum of both psoas muscles. Two researchers (RTK, CJR) independently performed the image segmentation after ensuring an interobserver variability correlation of at least 0.8 in a training set, under supervision of a radiologist (ANC). Disagreements regarding measurements were resolved by discussion, with ANC acting as a third observer when necessary. The muscle areas were adjusted by patient's height (m) in order to standardize the measurement between patients. The height normalized muscle areas (muscle indices) of the psoas and skeletal muscles (TAMA), PMI and SMI were used for further analysis. The units for muscle areas were cm<sup>2</sup> and muscle indexes, cm<sup>2</sup>/m<sup>2</sup>.

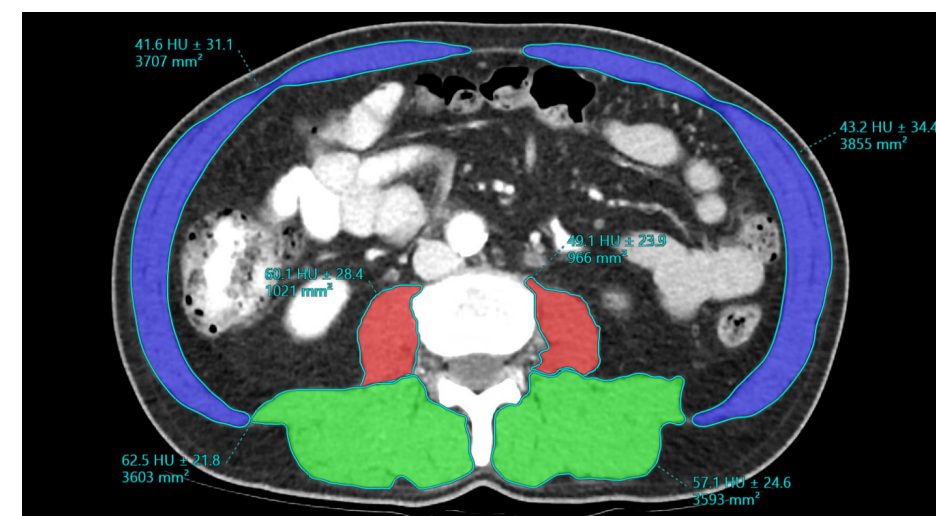
### Anastomotic leakage

All complications that occurred during 90 days after surgery were registered and reviewed. Anastomotic leakage was defined as a defect of the intestinal wall or abscess at the site of the colorectal anastomosis, diagnosed or confirmed by contrast enema, furthermore, an abscess around the anastomosis, for which endoscopic, percutaneous or operative re-intervention was required.

### Statistical analysis

Odds ratios (OR) with 95% confidence intervals and P-values were reported for each variable to assess the impact of all patient- and treatment characteristics, multivariable analysis was conducted using clinically-relevant variables. Mann-Whitney U and chi-squared test were used to assess patient- and treatment characteristics. A P-value of <0.05 was considered statistically significant. The Spearmans  $\rho$  correlation coefficient was used to assess interobserver variability in CT muscle surface area scoring. To show clinical use of CE CT-based muscle parameters nomograms were constructed based on regression model using the rms package in R. The predictive strength of the prediction models used to construct the nomograms was measured by the Area Under the Receiver Operating Characteristics (ROC) Curve (AUC). All analyses were done using R

version 4.1.2 in RStudio. ROC curves and AUC scores were calculated using the pROC package, plots were made using the ggplot2 package.



**Figure 1** – Example Vitrea software for contrast-enhanced (CE) computed tomography (CT)-based muscle measurements. Regions of interest (ROI) were drawn and categorized into specific muscle groups; psoas muscles (Red), back muscles (erector spinae and quadratus lumborum muscles) (Green), lateral muscle (external- and internal oblique and transversus abdominis) and rectus abdominis (Blue).

## Results

### Patient characteristics

A total of 215 patients underwent a sigmoid or rectal resection between 2016 and 2020 of which 48 were excluded because a CT scan was not present (Fig. 2). Additionally, patients with emergency surgery (n=3) and patients with stoma construction during primary surgery (n=18) were excluded. Of the in total 146 included patients 13 (8.9%) suffered from anastomotic leakage. There was a significant difference between the group of patients that suffered from anastomotic leakage and the group that did not with respect to age and the use of minimally invasive techniques (Table 1). There were no significant differences observed in comorbidities.

### Computer Tomography-based measurements

Results showed that the manual segmentation (Fig. 1) of the muscles on CT images were highly reproducible, with the Spearmans  $\rho$  correlation coefficient >0.87. (Table 2).

Muscle measurements

Patients that suffered anastomotic leakage had significantly lower preoperative TPA (median: 77.5 cm<sup>2</sup> vs. 59.6 cm<sup>2</sup>, p=0.02) and lower TAMA (median: 144.2 cm<sup>2</sup> vs. 111.8 cm<sup>2</sup>, p=0.01) (Table 3). Additionally, comparing the PMI and SMI between both groups, both parameters were significantly lower in the anastomotic leakage groups (p<0.01).

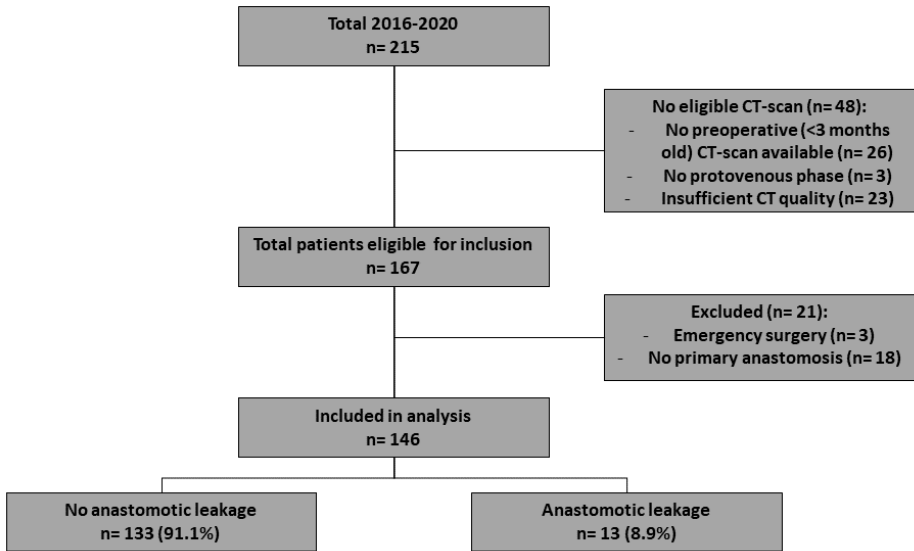


Figure 2 – Flowchart of patient inclusion

Uni- and multivariable analysis

An higher age (OR: 1.07, 95%CI 1.01-1.13, p=0.02) and lower PMI (OR: 0.87, 95%CI 0.77-0.99, p=0.03) and SMI (OR: 0.94, 95%CI 0.88-0.99, p=0.04) were in univariable analysis significantly associated with anastomotic leakage (Table 4). After adjusting for confounders (age and comorbidity), a lower PMI (OR: 0.85, 95%CI 0.71-0.99, p=0.03) and SMI (OR: 0.93, 95%CI 0.86-0.99, p=0.02) were both significantly associated with the occurrence of anastomotic leakage.

Nomograms

For preoperative prediction of anastomotic leakage regression model-based prediction models, using clinically- and statistically relevant parameters (age, gender, comorbidity, chemoradiotherapy and SMI or PMI), were made. The prediction model using PMI had an AUC of 79.8% (Fig. 3A) and using SMI as muscle parameter had an AUC of 79.0% (Fig. 3B), respectively. Additionally, clinically usable nomograms were constructed using these prediction models with using PMI (Fig. 4A) as muscle parameter and one using SMI (Fig. 4B).

Table 1 – Patient characteristics

	No anastomotic leakage	Anastomotic leakage	p-value
	n=133 (91.1%)	n= 13 (8.9%)	
Age (median)	59 (50-71)	68 (37-86)	<0.01
Gender (male)	80 (60.2%)	5 (38.5%)	0.22
ASA score			
1-2	26 (19.5%)	3 (23.1%)	0.95
3-4	12 (9.0%)	10 (76.9%)	
Comorbidity	74 (55.6%)	10 (76.9%)	0.24
BMI (median)	25.0 (19.5-41.3)	25.9 (17.5-34.7)	0.93
MUST-score			
0 (low risk)	81 (60.9%)	3 (23.1%)	
1 (medium risk)	4 (3.0%)	2 (15.4%)	<0.01
2 (high risk)	1 (0.8%)	1 (7.7%)	
Missing	47 (35.3%)	7 (53.8%)	
pT-stage			
0	1 (0.8%)	0 (0.0%)	0.69
1-2	58 (43.6%)	6 (46.2%)	
3-4	74 (55.6%)	7 (53.8%)	
pN-stage			
0	81 (60.9%)	9 (69.2%)	0.74
≥1	52 (39.1%)	4 (30.8%)	
Neo-adjuvant chemoradiotherapy (CRT)	23 (17.3%)	4 (30.8%)	0.41
Type of surgery			
Low-anterior resection (LAR)	64 (48.1%)	9 (69.2%)	0.25
Sigmoid resection	69 (51.9%)	4 (30.8%)	
Minimally invasive			
Open	4 (3.0%)	2 (15.4%)	<0.01
Laparoscopic	129 (97.0%)	11 (84.6%)	

**Table 2** - Interobserver variability, The Spearmans p correlation coefficient

	Coefficient	p-value
Total Abdominal Muscle Area (TAMA)	0.99	<0.01
Total Psoas Area (TPA)	0.95	0.01
Psoas left	0.89	0.04
Psoas right	0.87	0.05
Psoas Muscle Index (PMI)	0.91	0.03
Skeletal Muscle Index (SMI)	0.99	<0.01

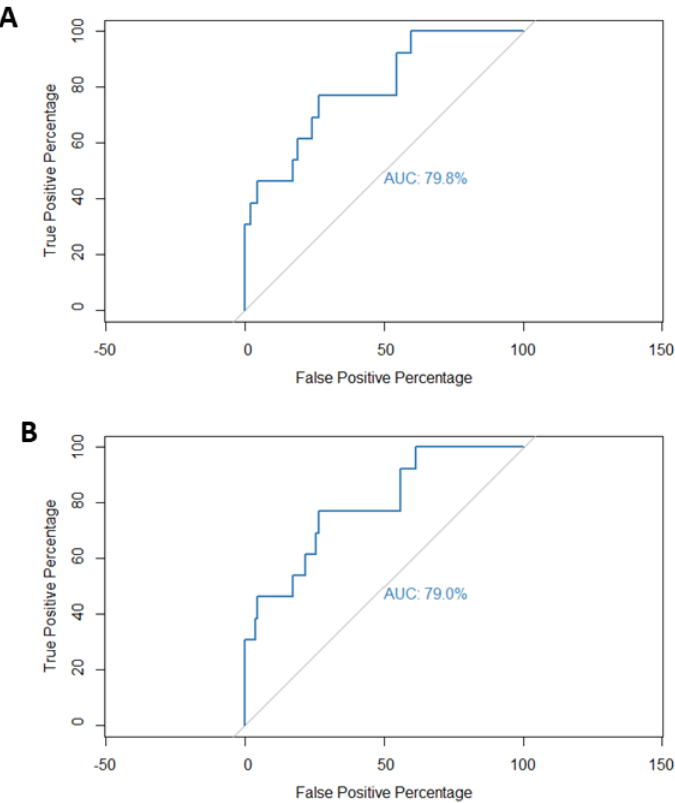
**Table 3** - Preoperative contrast enhanced (CE) computed tomography (CT) muscle measurements

	No anastomotic leakage n=133 (91.1%)	Anastomotic leakage n= 13 (8.9%)	p-value
Total Psoas Area (TPA) (cm²) (median)	77.5 (37.7-196.3)	59.6 (39.7-101.4)	0.01
Total Abdominal Muscle Area (TAMA) (cm²) (median)	144.2 (70.1-377.1)	111.8 (73.8-191.1)	0.02
Psoas Muscle Index (PMI) (cm²/m²) (mean)	25.05 (14.7-64.1)	22.1 (14.2-28.7)	<0.01
Skeletal Muscle Index (SMI) (cm²/m²) (mean)	46.6 (27.-123.1)	41.8 (26.5-54.1)	<0.01

**Table 4** – Logistic regression analysis odds ratio (OR) for anastomotic leakage.

	OR	p-value	Adjusted OR*	p-value
Age	1.07 (1.01-1.13)	0.02	-	
Sex (male)	0.41 (0.13-1.33)	0.14		
ASA score**			-	
1	Ref	-	Ref	
2	0.82 (0.21-3.25)	0.78	0.99 (0.21-4.56)	0.99
3	0.72 (0.07-7.68)	0.79	0.81 (0.06-10.34)	0.87
Comorbidity	2.58 (0.68-9.79)	0.16	-	
Type of surgery				
Low Anterior Resection (LAR)	Ref	-	Ref	
Sigmoid resection	0.63 (0.18-2.15)	0.46	0.45 (0.12-1.62)	0.21
T-stage				
1	Ref	-	-	
2	0.56 (0.1-3.6)	0.57	0.33 (0.05-2.41)	0.28
3	0.47 (0.08-2.68)	0.42	0.28 (0.04-1.99)	0.21
4	1.62 (0.19-13.93)	0.66	0.78 (0.08-8.18)	0.84
Neoadjuvant therapy	2.13 (0.60-7.50)	0.24	1.43 (0.37-5.51)	0.61
BMI	0.99 (0.86-1.14)	0.90	0.97 (0.84-1.11)	0.66
Psoas Muscle Index (PMI)	0.87 (0.77-0.99)	0.03	0.85 (0.71-0.99)	0.03
Skeletal Muscle Index (SMI)	0.94 (0.88-0.99)	0.04	0.93 (0.86-0.99)	0.02

\* Adjusted for age, comorbidity, \*\* ASA; American Society of Anesthesiologists



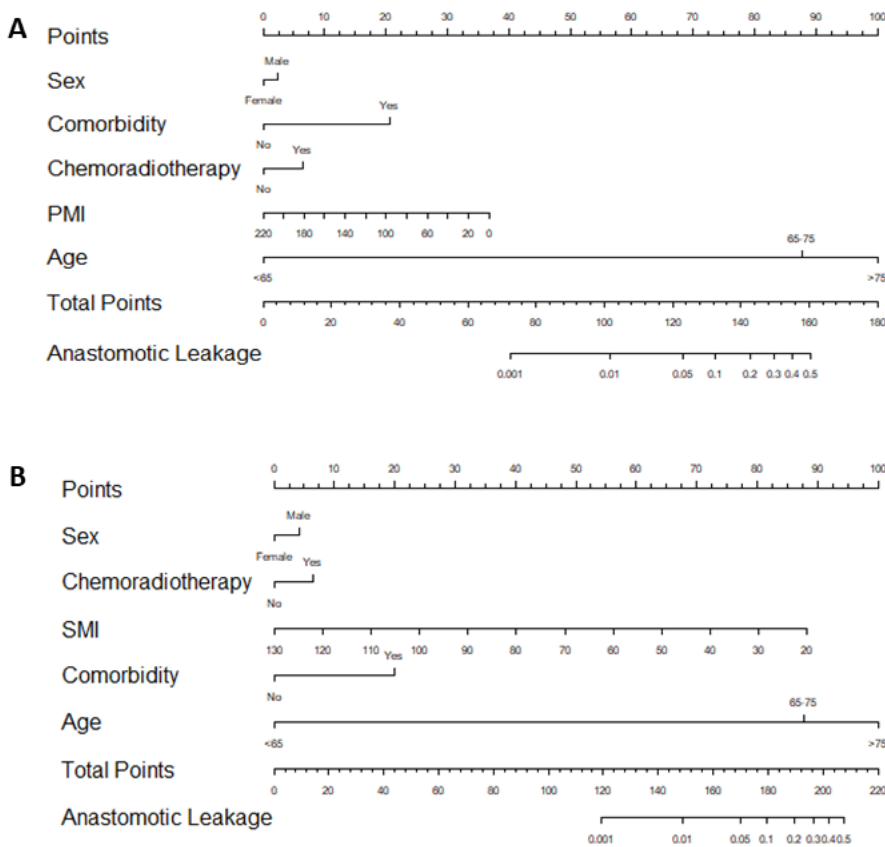
**Figure 3**- ROC curve of logistic regression predictions model used to construct nomogram A) using PMI as muscle parameter, B) using SMI as muscle parameter.

Discussion

This study investigated the value of CT-based cross-sectional measurements of abdominal and psoas muscles as a prognostic factor for anastomotic leakage after curative intended oncological sigmoid or rectal resection. Cross sectional measured abdominal and psoas muscle area were significantly lower in patients that suffered from anastomotic leakage. Furthermore, both PMI and SMI are both prognostic factors for anastomotic leakage following sigmoid and rectal resection.

Recent studies have shown an association between lower muscle volumes and short-term surgical outcomes after colorectal surgery [7, 12, 13]. Literature reports that cross-sectional lumbar muscle areas are well correlated with muscle mass in the whole body [15, 16]. However, analysis of CT images using a single-muscle approach such as the psoas major muscle, might be less laborious and therefore more realistic in a clinical

setting, validation is however still lacking [17]. As shown by Jones et al. TPA and TAMA on the L3 level correlates well with clinical outcomes. [7]. However these reports also showed that TAMA was more reproducibly measured by CT-analysis than TPA. This is also observed in our study as the interobserver variability is higher in the TPA.



**Figure 4** – Nomogram prediction the risk of anastomotic leakage constructed using logistic regression model. A) Using psoas muscle index (PMI) as muscle parameter, the model had an area under the curve (AUC) of 79.8% (Fig. 4A ) B) using skeletal muscle index (SMI) as muscle parameter, the model had an AUC of 79.0% (Fig. 4B)

The association between low muscle mass and anastomotic leakage might be partly explained by frailty, since previous studies have shown an association between frailty and anastomotic leakage following colorectal surgery as well [7, 18, 19]. However, there is no consensus on markers for determining patient frailty at this time, identification of frail patients is still difficult [20, 21].

Skeletal muscle depletion is defined as a decrease in muscle mass and it occurs when protein degradation exceeds protein synthesis. Potential causes of muscle atrophy are aging, malnutrition, long-term immobilization, as well as various serious and often chronic diseases, such as chronic heart failure, chronic obstructive lung disease, renal failure, AIDS, sepsis, anorexia nervosa and muscular dystrophies among others. Furthermore, skeletal muscle depletion may be the result from cancer too, as part of the cancer-cachexia syndrome [22-24]. Cancer cachexia is a wasting syndrome characterized by weight loss, anorexia, asthenia and anemia. The pathogenicity of this syndrome is multifactorial, due to a complex interaction of tumor and host factors leading to muscle protein breakdown, thus to cachexia-related sarcopenia [23, 25]. Several studies have shown a clear correlation between lower muscle mass and an increased inflammatory state due to tumor-cachexia and frailty [26, 27]. This might explain the association between sarcopenia and anastomotic leakage as well since a more katabolic and inflammatory state may hamper healing capacity in tissues such as bowel tissue resulting in anastomotic leakage [28, 29].

Additionally, aging in patients might explain this association, since CT-based muscle measurement may be more accurate than just age, since it is more representative for biological age compared to calendar age. Ageing leads to trunk muscle attenuation, but such age-related differences vary widely between muscle groups [30]. Thicknesses of rectus abdominis, internal oblique and external oblique muscles were 36% to 48% smaller for older than younger adults [31]. Additionally, trunk muscle deficits with increasing age may have important implications for physical function, disability, pain, and risk of injury in older adults [32].

Accurate prediction of postoperative complications and especially anastomotic leakage could improve preoperative patient selection, treatment decision and shared-decision making. An important dilemma in patients undergoing sigmoid or rectal resection is whether or not to construct a anastomosis and/or (temporary) stoma [33]. An important consideration is the risk of anastomotic leakage since a (temporary) diverting stoma can reduce the rate of clinical symptomatic anastomotic leakage [6, 34]. Furthermore, measuring a low muscle mass on the preoperative CE-CT could be an indication for prehabilitation programs, since low muscle mass may be reversible [9, 11, 35]. Especially, in rectal cancer patients undergoing neo-adjuvant chemo(radio)therapy, whereas there is a greater window of preoperative optimization by physical exercise, which has been shown to be safe and feasible [36]. Prehabilitation programs have been shown to objectively improve physical fitness [37]. Additionally, since patients with lower skeletal muscle mass may experience more chemotherapy toxicity, this might be used in shared decision making and treatment planning as well [38, 39].

**Limitations** Although this study provides insights in the use of CT-based muscle measurements, this study has some limitations. Since, patients included in this study were selected to be fit for surgery by expert opinion, this may lead to allocation bias. Additionally, some patients were excluded because of unavailability of CT examinations or insufficient quality. However, the occurrence allocation bias is unavoidable in this type of retrospective study. Due to the relatively low sample size, validation of the prediction models was not possible. Furthermore, this was a single center study in an academic teaching hospital where comorbidity/competing risks were possibly not fully known by applied comorbidity classification, this affects generalizability.

## Conclusion

In this exploratory analysis, low SMI and PMI were predictive for anastomotic leakage and show potential in treatment planning, shared decision making and engaging in prehabilitation programs. Since abdominal CT scans are routinely being performed for preoperative staging and treatment planning, they can easily be used to quantify muscle volumes without additional examinations or costs.

## References

1. Detering, R., et al., *Three-Year Nationwide Experience with Transanal Total Mesorectal Excision for Rectal Cancer in the Netherlands: A Propensity Score-Matched Comparison with Conventional Laparoscopic Total Mesorectal Excision*. J Am Coll Surg, 2019. **228**(3): p. 235-244.e1.
2. Larson, D.W., et al., *Additional Value of Preoperative Albumin for Surgical Risk Stratification among Colorectal Cancer Patients*. Ann Nutr Metab, 2021: p. 1-9.
3. Rutegård, M., et al., *Exposure to oestrogen and risk of anastomotic leakage after colorectal cancer surgery - a clue to the different leak rates in men and women*. Colorectal Dis, 2022.
4. Giesen, L.J.X., et al., *Implementation of robotic rectal cancer surgery: a cross-sectional nationwide study*. Surg Endosc, 2022.
5. Tilney, H.S., et al., *Minimal access rectal cancer surgery: an observational study of patient outcomes from a district general hospital with over a decade of experience with robotic rectal cancer surgery*. Colorectal Dis, 2021. **23**(8): p. 1961-1970.
6. van Kooten, R.T., et al., *Preoperative risk factors for major postoperative complications after complex gastrointestinal cancer surgery: A systematic review*. Eur J Surg Oncol, 2021. **47**(12): p. 3049-3058.
7. Jones, K.I., et al., *Simple psoas cross-sectional area measurement is a quick and easy method to assess sarcopenia and predicts major surgical complications*. Colorectal Dis, 2015. **17**(1): p. O20-6.
8. Fielding, R.A., et al., *Sarcopenia: an undiagnosed condition in older adults. Current consensus definition: prevalence, etiology, and consequences. International working group on sarcopenia*. J Am Med Dir Assoc, 2011. **12**(4): p. 249-56.
9. Barberan-Garcia, A., et al., *Personalised Prehabilitation in High-risk Patients Undergoing Elective Major Abdominal Surgery: A Randomized Blinded Controlled Trial*. Ann Surg, 2018. **267**(1): p. 50-56.
10. van der Hulst, H.C., et al., *Can physical prehabilitation prevent complications after colorectal cancer surgery in frail older patients?* Eur J Surg Oncol, 2021. **47**(11): p. 2830-2840.
11. Bruns, E.R., et al., *The effects of physical prehabilitation in elderly patients undergoing colorectal surgery: a systematic review*. Colorectal Dis, 2016. **18**(8): p. O267-77.
12. van Vugt, J.L.A., et al., *Impact of low skeletal muscle mass and density on short and long-term outcome after resection of stage I-III colorectal cancer*. Eur J Surg Oncol, 2018. **44**(9): p. 1354-1360.
13. Looijaard, S., et al., *Are computed tomography-based measures of specific abdominal muscle groups predictive of adverse outcomes in older cancer patients?* Heliyon, 2020. **6**(11): p. e05437.

14. Bahat, G., et al., *Cut-off values of skeletal muscle index and psoas muscle index at L3 vertebra level by computerized tomography to assess low muscle mass*. Clin Nutr, 2021. **40**(6): p. 4360-4365.
15. Holt, D.Q., et al., *Body composition analysis using abdominal scans from routine clinical care in patients with Crohn's Disease*. Scand J Gastroenterol, 2016. **51**(7): p. 842-7.
16. Mourtzakis, M., et al., *A practical and precise approach to quantification of body composition in cancer patients using computed tomography images acquired during routine care*. Appl Physiol Nutr Metab, 2008. **33**(5): p. 997-1006.
17. Baracos, V.E., *Psoas as a sentinel muscle for sarcopenia: a flawed premise*. J Cachexia Sarcopenia Muscle, 2017. **8**(4): p. 527-528.
18. Sparreboom, C.L., et al., *Different Risk Factors for Early and Late Colorectal Anastomotic Leakage in a Nationwide Audit*. (1530-0358 (Electronic)).
19. Diers, J., et al., *Disproportionately high failure to rescue rates after resection for colorectal cancer in the geriatric patient population - A nationwide study*. Cancer Med, 2022.
20. Hartmann, A., et al., *Ranking Biomarkers of Aging by Citation Profiling and Effort Scoring*. Front Genet, 2021. **12**: p. 686320.
21. Cardoso, A.L., et al., *Towards frailty biomarkers: Candidates from genes and pathways regulated in aging and age-related diseases*. Ageing Res Rev, 2018. **47**: p. 214-277.
22. Rolland, Y., et al., *Cachexia versus sarcopenia*. Curr Opin Clin Nutr Metab Care, 2011. **14**(1): p. 15-21.
23. Evans, W.J., et al., *Cachexia: a new definition*. Clin Nutr, 2008. **27**(6): p. 793-9.
24. Muliawati, Y., H. Haroen, and L.W. Rotty, *Cancer anorexia - cachexia syndrome*. Acta Med Indones, 2012. **44**(2): p. 154-62.
25. Muscaritoli, M., et al., *Consensus definition of sarcopenia, cachexia and pre-cachexia: joint document elaborated by Special Interest Groups (SIG) "cachexia-anorexia in chronic wasting diseases" and "nutrition in geriatrics"*. Clin Nutr, 2010. **29**(2): p. 154-9.
26. Richards, C.H., et al., *The relationships between body composition and the systemic inflammatory response in patients with primary operable colorectal cancer*. PLoS One, 2012. **7**(8): p. e41883.
27. Reisinger, K.W., et al., *Sarcopenia is associated with an increased inflammatory response to surgery in colorectal cancer*. Clin Nutr, 2016. **35**(4): p. 924-7.
28. Moyes, L.H., et al., *Preoperative systemic inflammation predicts postoperative infectious complications in patients undergoing curative resection for colorectal cancer*. Br J Cancer, 2009. **100**(8): p. 1236-9.
29. De Magistris, L., et al., *Preoperative inflammation increases the risk of infection after elective colorectal surgery: results from a prospective cohort*. International Journal of Colorectal Disease, 2016. **31**(9): p. 1611-1617.
30. Anderson, D.E., et al., *Variations of CT-based trunk muscle attenuation by age, sex, and specific muscle*. J Gerontol A Biol Sci Med Sci, 2013. **68**(3): p. 317-23.
31. Cuellar, W.A., et al., *The assessment of abdominal and multifidus muscles and their role in physical function in older adults: a systematic review*. Physiotherapy, 2017. **103**(1): p. 21-39.
32. Johannesdottir, F., et al., *Population-based study of age- and sex-related differences in muscle density and size in thoracic and lumbar spine: the Framingham study*. Osteoporos Int, 2018. **29**(7): p. 1569-1580.
33. Algie, J.P.A., et al., *Stoma versus anastomosis after sphincter-sparing rectal cancer resection; the impact on health-related quality of life*. International Journal of Colorectal Disease, 2022.
34. Tan, W.S., et al., *Meta-analysis of defunctioning stomas in low anterior resection for rectal cancer*. Br J Surg, 2009. **96**(5): p. 462-72.
35. Carli, F., et al., *Effect of Multimodal Prehabilitation vs Postoperative Rehabilitation on 30-Day Postoperative Complications for Frail Patients Undergoing Resection of Colorectal Cancer: A Randomized Clinical Trial*. JAMA Surgery, 2020. **155**(3): p. 233-242.
36. van Waart, H., et al., *Recruitment to and pilot results of the PACES randomized trial of physical exercise during adjuvant chemotherapy for colon cancer*. Int J Colorectal Dis, 2018. **33**(1): p. 29-40.
37. Bolger, J.C., et al., *Perioperative prehabilitation and rehabilitation in esophagogastric malignancies: a systematic review*. Dis Esophagus, 2019. **32**(9).
38. Jung, H.W., et al., *Effect of muscle mass on toxicity and survival in patients with colon cancer undergoing adjuvant chemotherapy*. Support Care Cancer, 2015. **23**(3): p. 687-94.
39. Barret, M., et al., *Sarcopenia is linked to treatment toxicity in patients with metastatic colorectal cancer*. Nutr Cancer, 2014. **66**(4): p. 583-9.