



Universiteit
Leiden
The Netherlands

A physicochemical study of Medieval and Post-Medieval ceramics from the Aegean

Panagopoulou, A.

Citation

Panagopoulou, A. (2023, May 9). *A physicochemical study of Medieval and Post-Medieval ceramics from the Aegean*. Retrieved from <https://hdl.handle.net/1887/3620224>

Version: Publisher's Version

License: [Licence agreement concerning inclusion of doctoral thesis in the Institutional Repository of the University of Leiden](#)

Downloaded from: <https://hdl.handle.net/1887/3620224>

Note: To cite this publication please use the final published version (if applicable).

Curriculum Vitae

Adamantia Panagopoulou completed undergraduate studies in 'Conservation of Antiquities and Works of Art' at the University of West Attica in Greece. Afterwards, she completed the Master's program 'Chemistry and Materials Science' in the Interdepartmental Master of Science of the Department of Chemistry and the Department of Materials' Science and Engineering of the University of Ioannina in cooperation with the National Centre for Scientific Research 'Demokritos' in Athens, Greece. Recently, she completed her PhD dissertation 'A Physicochemical Study of Medieval and Post-Medieval Ceramics from the Aegean' at the University of Leiden in the Netherlands in cooperation with the National Centre for Scientific Research 'Demokritos' in Greece. She has already received four scholarships from Prins Bernhard Cultuurfonds, (2020); Netherlands Institute of Athens, NIA, (2018); Stavros Niarchos Foundation, SNFCC, (2016); and Nikos Kanellopoulos Foundation, (2000-2001). She specialized in destructive and non-destructive Physicochemical analysis of antiquities and works of art. More job opportunities arose when she was employed in the 'NCSR' Demokritos as a researcher assistant having participated in four European and Greek-Funded Research Projects and having conducted personal experimental projects. Her working experience in combination with her training in Special Techniques provide her with some specific technical knowledge and skills, namely Optical Microscopy, Chromatoanalysis (RGB), Scanning Electron Microscopy (SEM), Fluorescence X-ray (XRF), X-ray Diffraction (XRD), Raman Spectroscopy, Petrographic analysis, Statistical analysis and Data management. In addition, she has been employed by the Department of Conservation of Cultural Heritage of the Ionian University in Greece as a lecturer for three years (2013 to 2016). Over than 10 bachelor theses have been supervised by her at Ionian University about physicochemical analysis and conservation of pottery, metals and mortars. The results of some of them have been already published. Moreover, she has taught part of the course 'Invasive methods and preventive conservation of organic and inorganic materials' in the Master's program 'Applied Archaeological Sciences' at the Aegean University, Greece; and the course 'The archaeometry role in archaeology', MA/RMA course 'The Archaeology of the Crusades' (1084G11) in Leiden University. Furthermore, she has taught in many online academic courses and workshops about the 'Conservation and Physicochemical Study of Pottery' and 'Conservation and Physicochemical Study of Metal objects' with Leiden University and with the Balkan Heritage Foundation. Apart from the above, she has a lot of experience conserving antiquities in collaboration with a few Ephorates of Antiquities in Greece. During the past few years, she has worked as a conservator in the Delphi archaeological excavation under the supervision of the French School at Athens; in the Euboea archaeological excavations under the supervision of the Netherlands Institute at Athens; and in the Late Mycenaean Settlement archaeological excavations in Delphi under the Department of Mediterranean Studies of the University of the Aegean in Greece. She has also gained additional professional experience working in archaeological museums such as Archaeology and History of Art Museum in the National & Kapodistrian University of Athens, in the Mansion of Kouloura-Toys' Museum of Benaki, etc. She is the first author of the book 'Byzantine and Post-Byzantine monumental painting in churches and monasteries in Zakynthos, 11th-18th century', 2018, Athens: Arakynthos Academic Press. She has already delivered a few full and short papers as well as participations in conferences from her studies at pottery, metalworking, wall paintings and pigments mainly of the Byzantine and Post Medieval periods. She is member of the Hellenic Archaeometric Society (HAS) and the Netherland Institute of Athens (NIA).

APPENDIXES

APPENDIX I MULTILINGUAL DICTIONARY OF THE STRUCTURAL PARTS OF THE KILN (HASAKI 2002, p. 466)

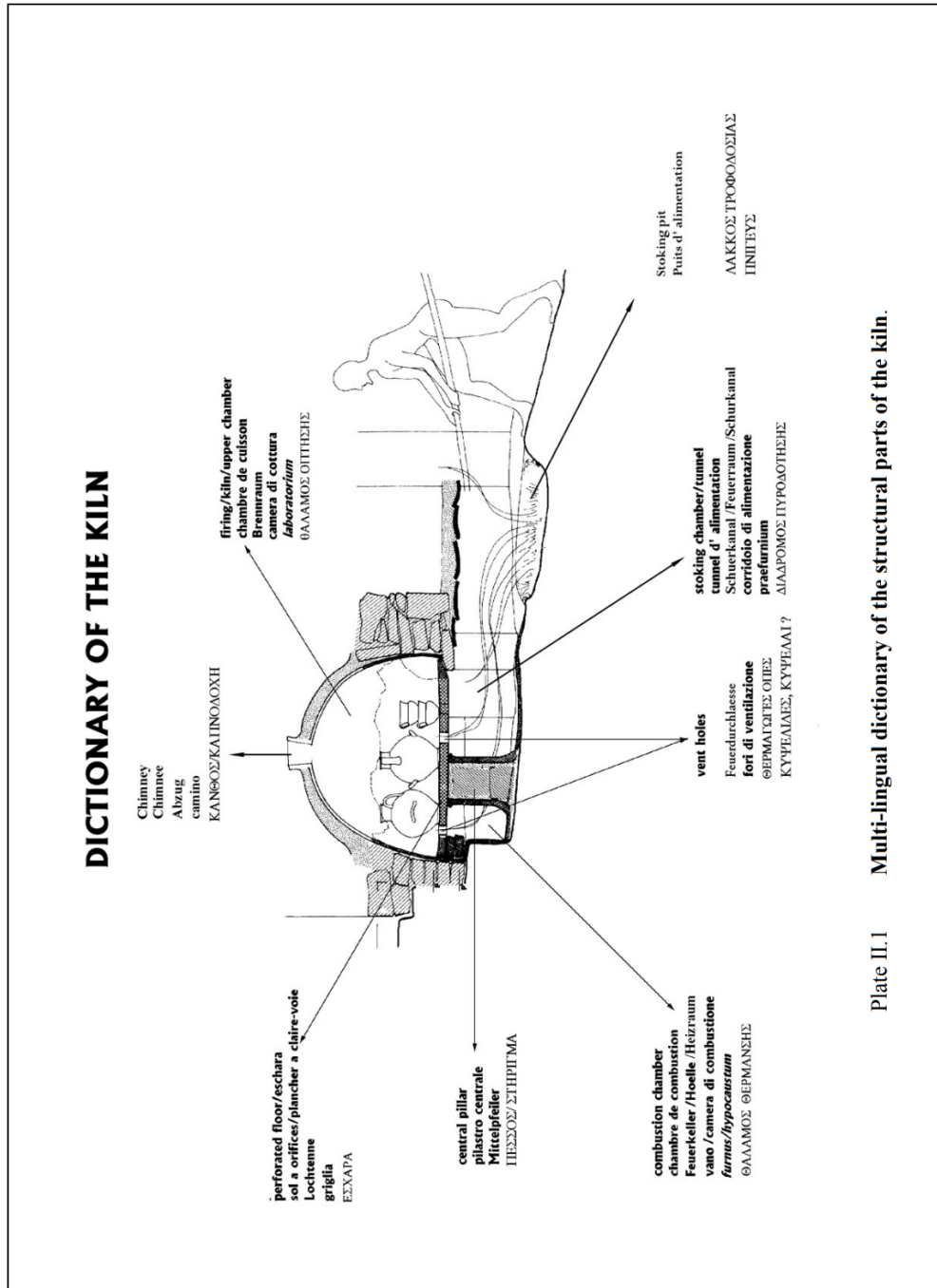


Plate II.1 Multi-lingual dictionary of the structural parts of the kiln.

APPENDIX II THE POTTERY TYPOLOGY UNDER STUDY (THE POTTERY TYPES, DATES, AND PROVENANCES IN THIS TABLE ARE LARGELY BASED ON VROOM 2014)

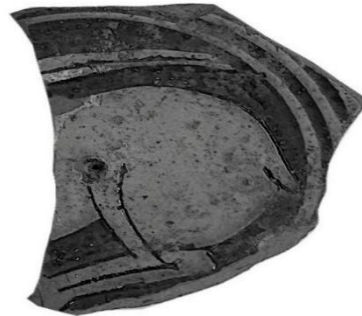
POTTERY TYPOLOGY	DATE	EXCAVATION SITES	POSSIBLE PROVENANCE SITES
WHITE WARES			
Glazed White Ware II/IV	GWW II: Ca. mid 9th-12th c.; GWW IV: Ca. mid 12th-(early) 13th c.	Mytilene in Lesvos	Constantinople (Istanbul)
Polychrome White Ware	Ca. early 10th-mid 12th c.	Chalcis in Euboea	Constantinople (Istanbul)
Glazed Frit Ware	Ca. 12th c.	Chalcis in Euboea, Mytilene in Lesvos	Syria?, Egypt?
Frit Ware	Ca. 12th-13th c.	Chalcis in Euboea	Egypt?
Lustre Ware	Ca. 11th-13th c.	Chalcis in Euboea	Egypt?
Maiolica	Ca. late 15th-18th c.	Athens in Attica, Chalcis in Euboea, Mytilene in Lesvos	Montelupo in Central Italy?, North Italy?
Porcelain	Ca. 15th-18th c.	Mytilene in Lesvos	China
Iznik Ware	Ca. late 15th-early 18th c.	Mytilene in Lesvos	Western Turkey
RED WARES			
Plain Glazed Ware in a Red and Grey Fabric	Ca. 10th-13th c.	Athens in Attica, Chalcis in Euboea	Chalcis?, Athens?
Unglazed Plain Ware	Ca. 10th-13th c.	Chalcis in Euboea	Local
Amphorae	Ca. 10th-13th c.	Chalcis in Euboea	Local
Slip-Painted Ware	Ca. late 11th-12th c.	Athens in Attica, Chalcis in Euboea	Local
Green and Brown Painted Ware	Ca. second half of the 12th c.	Athens in Attica, Chalcis in Euboea	Chalcis?, Athens?
Fine Sgraffito Ware	Ca. second half of the 12th c.-early 13th c.	Athens in Attica, Chalcis in Euboea	Chalcis?, Athens?
Painted Fine Sgraffito Ware	Ca. second half of the 12th c.	Chalcis in Euboea	Local
Incised Sgraffito Ware	Ca. mid 12th-mid 13th c.	Athens in Attica, Chalcis in Euboea	Chalcis?, Athens?
Champlevé Ware	Ca. late 12th-mid 13th c.	Chalcis in Euboea	Local
Monochrome Glazed Ware	Ca. 12th-18th c.	Athens in Attica, Chalcis in Euboea, Mytilene in Lesvos	Local, or elsewhere?
Splashed Ware	Ca. 13th c.	Chalcis in Euboea	Local
Zeuxippus Ware	Ca. 13th-early 14th c.	Chalcis in Euboea	Western Turkey
Zeuxippus Ware Subtypes	Ca. 13th-mid 14th c.	Athens in Attica, Mytilene in Lesvos	Athens?, Western Turkey?
Monochrome and One Colour Sgraffito Ware	Ca. 13th-14th c.	Mytilene in Lesvos	Thessaloniki?, Constantinople (Istanbul)?
Elaborate Incised Ware	Ca. mid 13th-late 14th c.	Mytilene in Lesvos	Constantinople (Istanbul)
Roulette/Veneto Ware	Ca. late 13th-early 14th c.	Chalcis in Euboea, Mytilene in Lesvos	Northeast Italy
Monochrome Sgraffito Ware	Ca. 13th-15th c.	Mytilene in Lesvos	Unknown region
Polychrome Sgraffito Ware	Ca. 13th-17th c.	Athens in Attica, Mytilene in Lesvos	Chalcis?, Athens?, or elsewhere?
Late Sgraffito Ware	Ca. 13th-15th c.	Athens in Attica	Athens?
Miletus Ware	Ca. late 14th-15th c.	Mytilene in Lesvos	Western Turkey

Painted Ware	Ca. 13th-17th c.	Athens in Attica, Chalcis in Euboea, Mytilene in Lesvos	Chalcis?, Athens?, Northern Italy?, or elsewhere?
Polychrome Painted Ware/Maiolica	Ca. late 16th-early 17th c.	Athens in Attica	Local
Polychrome Painted Ware	Ca. 15th-18th c.	Mytilene in Lesvos	Unknown region
Polychrome Marbled Ware	Ca. late 16th-19th c.	Chalcis in Euboea, Mytilene in Lesvos	Northern Italy?, or elsewhere?
Spanish Lustre Ware	Ca. 13th-15 th c.	Athens in Attica	Valencia
Kütahya Ware	Ca. 15th-19th c.	Mytilene in Lesvos	Western Turkey
Didymoteicho Ware	Ca. 19th-20th c.	Chalcis in Euboea	Dardanelles?, or Northern Greece?
Unglazed Incised Grey Ware	Ca. 15th-18th c.	Mytilene in Lesvos	Unknown region
Unglazed Painted Ware	Ca. 15th-18th c.	Mytilene in Lesvos	Unknown region
Tripod stilt	Ca. 15th-18th c.	Mytilene in Lesvos	Local
Pottery waster	Ca. 15th-18th c.	Athens in Attica, Mytilene in Lesvos	Local
Overfired Stoneware	Ca. 15th-18th c.	Mytilene in Lesvos	Local

**APPENDIX III SOME OF THE DESIGNS USED IN THE SAMPLES FROM CHALCIS
IN EUBOEA, ATHENS IN ATTICA AND FROM THE CASTLE OF MYTILENE IN
LESVOS**



Champlévé Ware CH84



Champlévé Ware CH92



Zeuxippus Ware CH99



Incised Sgraffito Ware CH117

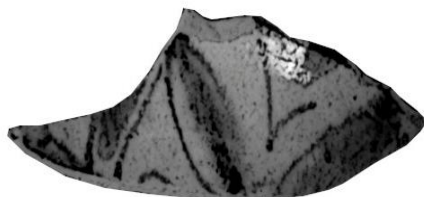


Champlévé Ware CH122



Incised Sgraffito Ware CH91

THE ATHENIAN AGORA IN ATTICA



Polychrome Painted Ware/Maiolica AAG29



Fine Sgraffito Ware AAG57

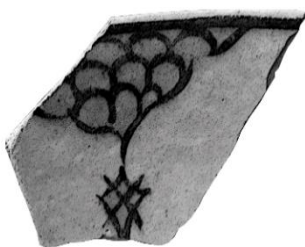
THE CASTLE OF MYTILENE IN LESVOS



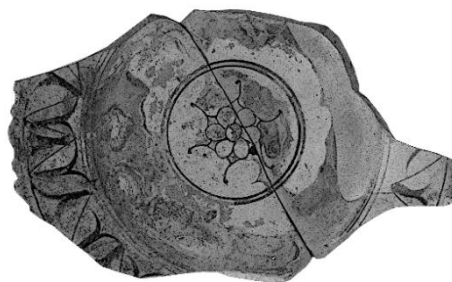
Kütahya Ware MYT181



Kütahya Ware MYT169



Kütahya Ware MYT179



Iznik Ware MYT168



Polychrome Sgraffito Ware MYT175



Iznik Ware MYT170



Miletus Ware MYT167



Glazed White Ware IV MYT203

APPENDIX IV SOME OF THE POTTERY COLOURS USED IN THE SAMPLES FROM CHALCIS IN EUBOEA, THE ATHENIAN AGORA IN ATTICA AND THE CASTLE OF MYTILENE IN LESVOS

CHALCIS IN EUBOEA



Champlevé Ware CH152



Champlevé Ware CH124



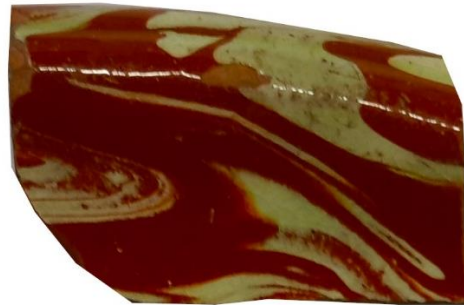
Champlevé Ware CH113



Slip-Painted Ware CH194



Painted Fine Sgraffito Ware CH98



Polychrome Marbled Ware CH102



Maiolica CH154



Glazed Frit Ware CH109

THE ATHENIAN AGORA IN ATTICA



Polychrome Painted Ware/Maiolica AAG29



Polychrome Painted Ware/Maiolica AAG30



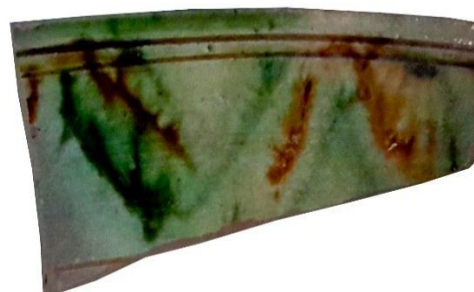
Polychrome Painted Ware/Maiolica AAG66



Maiolica AAG70



Polychrome Sgraffito Ware AAG60



Polychrome Sgraffito Ware AAG37



Green and Brown Painted Ware AAG69



Slip-Painted Ware AAG59

THE CASTLE OF MYTILENE IN LESVOS



Iznik Ware MYT168



Porcelain MYT185



Miletus Ware MYT204



Kütahya Ware MYT242



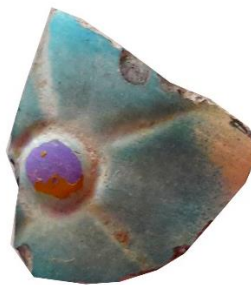
Polychrome Painted Ware MYT228



Polychrome Sgraffito Ware MYT209

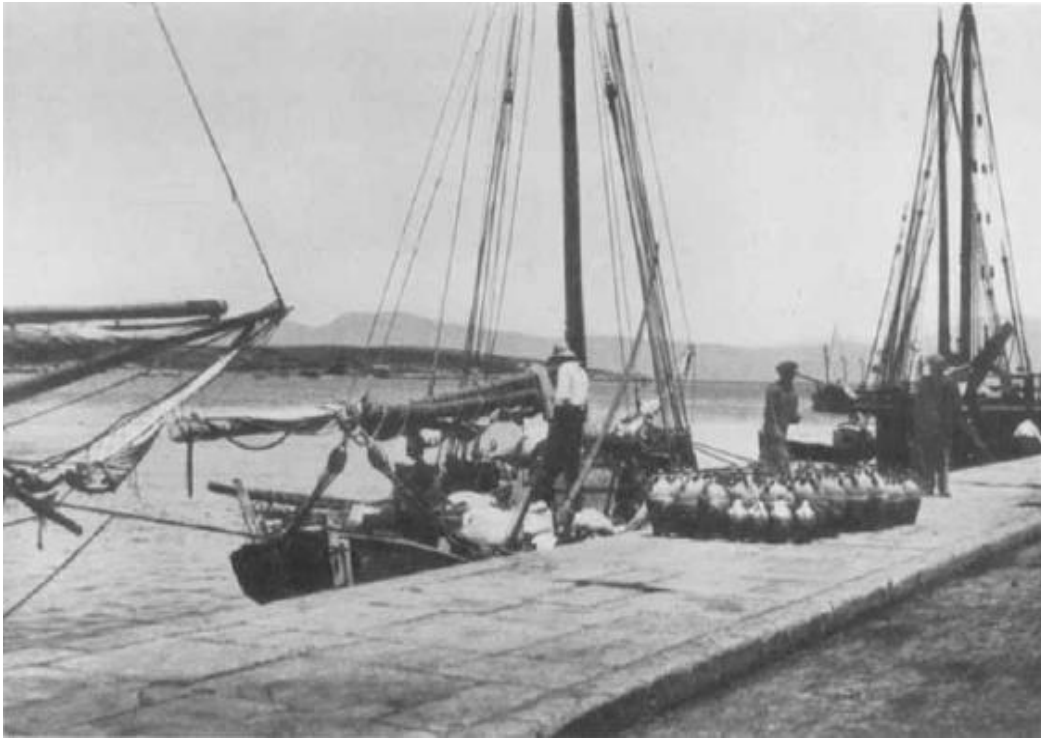


Maiolica MYT236



Monochrome Glazed Ware MYT200

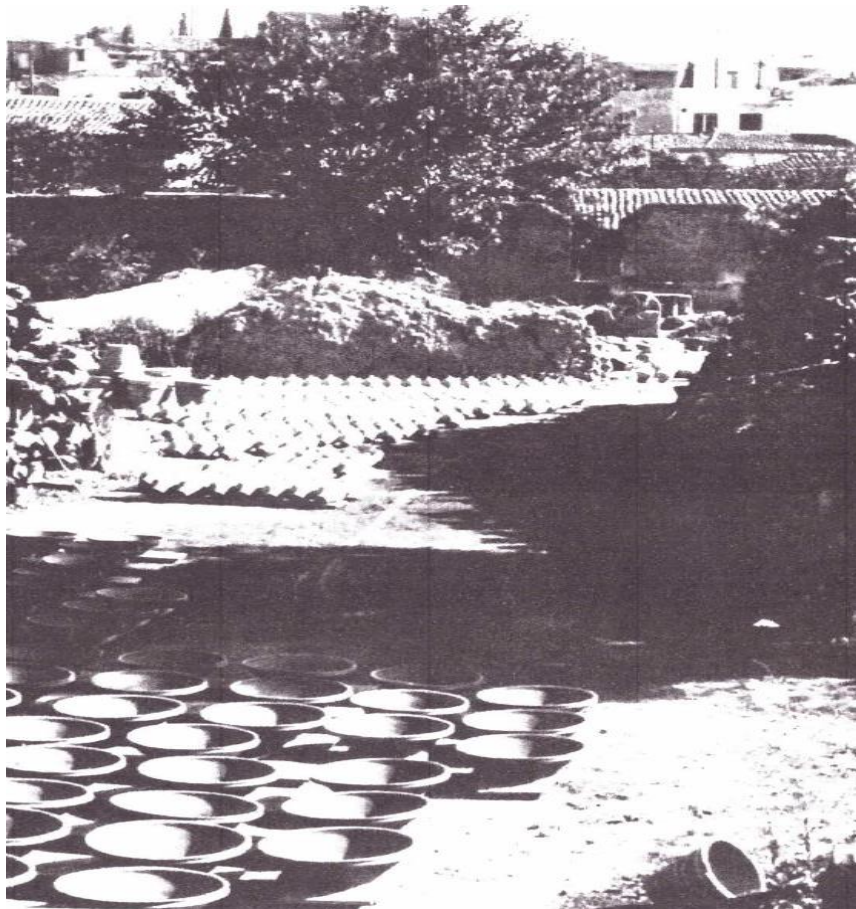
**APPENDIX V ETHNOGRAPHIC INFORMATION OF CHALCIS IN EUBOEA, THE
ATHENIAN AGORA IN ATTICA AND THE CASTLE OF MYTILENE IN LESVOS**



Pottery on quayside in Chalcis in Euboea (Casson 1951; 2015, p. 189).



Outdoor market in Chalcis in Euboea (Petraika 2002, p. 23).



Courtyard of pottery workshop, Chalcis in Euboea (Matson 1973, p. 122).



Variety of finished vessels. Chalcis in Euboea (Matson 1973, p. 131).



Drying pots outdoors, Attica (Vogiatzoglou 2009, p. 74).



Pottery Exhibition, Kifisia in Attica, 1938 (Vogiatzoglou 2009, p. 73).



Pottery workshop of Konstantinou Kalogirou and also his two sons, Tzani and Nikos, Attica, 1928 (Vogiatzoglou 2009, p. 73).



Pottery workshop of Tzani Kalogirou, Attica, 1956 (Vogiatzoglou 2009, p. 74).



The fired pottery was removed from the kiln and placed outside of the laboratory. Afterward's they were loaded directly on the boats. Stefanos Kouvdis Workshop in Agios Stefanos in Lesvos (Hamer 1991, p. 127-132; Giannopoulou and Demesticha 1998, p. 60).



Lesvos, 1968 (Papathoma Eleni 2001).



Τοποθέτηση από πάνω των τελευταίων στρώσεων στον κεραμικό κλίβανο. Εργαστήριο στον Άγιο Στέφανο, 1978.



Τοποθέτηση κεραμικών στον κλίβανο. Άγιος Στέφανος, 1978.

a) Placement of pottery on top of the last layers in the pottery kiln. Workshop in Agios Stefanos in Lesvos, 1978. b) Placement of pottery in the kiln. Workshop in Agios Stefanos in Lesvos, 1978 (Giannopoulou and Demesticha 1998, p. 56).

APPENDIX VI POTTERY TYPES OF THE STUDIED SAMPLES

WHITE WARES



Glazed White Ware II_CH107



Glazed White Ware IV_MYT203



Polychrome White Ware_CH108



Maiolica_CH154



Maiolica_AAG70



Maiolica_MYT227



Maiolica_MYT236



Porcelain_MYT223



Porcelain_MYT180



Porcelain_MYT185



Porcelain_MYT186



Porcelain_MYT221



Porcelain_MYT222



Iznik Ware_MYT168



Iznik Ware_MYT170



Iznik Ware_MYT214



Glazed Frit Ware_CH106



Glazed Frit Ware_CH109



Glazed Frit Ware_MYT182



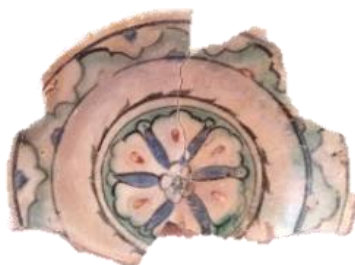
Frit Ware_CH147



Lustre Ware_CH110



Polychrome Painted Ware_MYT215



Polychrome Painted Ware_MYT228



Polychrome Painted Ware_MYT166

RED WARES



Plain Glazed Ware in a Red and Grey Fabric_CH85



Plain Glazed Ware in a Red and Grey Fabric_CH87



Plain Glazed Ware in a Red and Grey Fabric_CH88



Plain Glazed Ware in a Red and Grey Fabric_CH125



Plain Glazed Ware in a Red and Grey Fabric_AAG64



Plain Glazed Ware in a Red and Grey Fabric_AAG65



Unglazed Plain Ware_CH134



Amphora_CH155



Amphora_CH156



Amphora_CH157



Amphora_CH158



Amphora_CH159



Amphora_CH160



Amphora_CH161



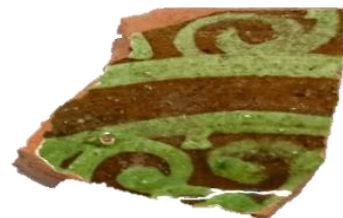
Amphora_CH162



Amphora_CH163



Slip-Painted Ware_CH86



Slip-Painted Ware_CH94



Slip-Painted Ware_CH121



Slip-Painted Ware_CH131



Slip-Painted Ware_CH138



Slip-Painted Ware_AAG58



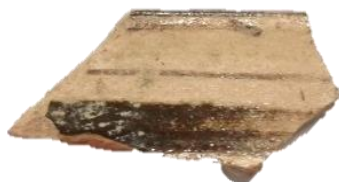
Slip-Painted Ware_AAG59



Green and Brown Painted Ware_CH95



Green and Brown Painted Ware_AGBZY852



Brown Painted Ware_CH136



Green and Brown Painted Ware_AGBZY853



Green and Brown Painted Ware_AGBZY854



Green and Brown Painted Ware_AGBZY847



Green and Brown Painted Ware_AAG61



Green and Brown Painted Ware_AAG69



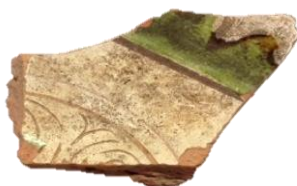
Fine Sgraffito Ware_CH127



Fine Sgraffito Ware_AGBZY842



Fine Sgraffito Ware_AAG57



Painted Fine Sgraffito Ware_CH98



Painted Fine Sgraffito Ware_CH97



Incised Sgraffito Ware_CH83



Incised Sgraffito Ware_CH90



Incised Sgraffito Ware_CH91



Incised Sgraffito Ware_CH111



Incised Sgraffito Ware_CH113



Incised Sgraffito Ware_CH114



Incised Sgraffito Ware_CH117



Incised Sgraffito Ware_CH129



Incised Sgraffito Ware_CH133



Incised Sgraffito Ware_CH139



Incised Sgraffito Ware_CH149



Incised Sgraffito Ware_CH150



Incised Sgraffito Ware_CH153



Incised Sgraffito Ware_AGBZY841



Incised Sgraffito Ware_AGBZY843



Incised Sgraffito Ware_AGBZY844



Incised Sgraffito Ware_AGBZY846



Incised Sgraffito Ware_AGBZY849



Unglazed Incised Grey Ware_MYT237



Late Sgraffito Ware_AAG45



Champlévé Ware_CH84



Champlévé Ware_CH92



Champlévé Ware_CH112



Champlévé Ware_CH115



Champlevé Ware_CH116



Champlevé Ware_CH118



Champlevé Ware_CH122



Champlevé Ware_CH123



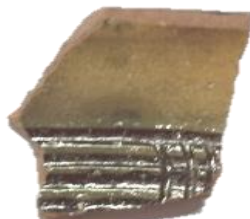
Champlevé Ware_CH124



Champlevé Ware_CH130



Champlevé Ware_CH132



Champlevé Ware_CH140



Champlevé Ware_CH141



Champlevé Ware_CH142



Champlevé Ware_CH143



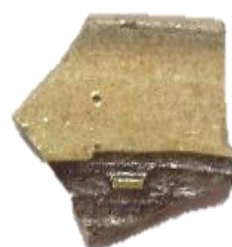
Champlevé Ware_CH144



Champlevé Ware_CH146



Champlevé Ware_CH148



Champlevé Ware_CH151



Champlevé Ware_CH152



Monochrome Glazed Ware_CH93



Monochrome Glazed Ware_CH96



Monochrome Glazed Ware_CH119



Monochrome Glazed Ware_CH120



Monochrome Glazed Ware_CH126



Monochrome Glazed Ware_CH128



Monochrome Glazed Ware_CH137



Monochrome Glazed Ware_AGBZY837



Monochrome Glazed Ware_AGBZY838



Monochrome Glazed Ware_AGBZY840



Monochrome Glazed Ware_AAG19



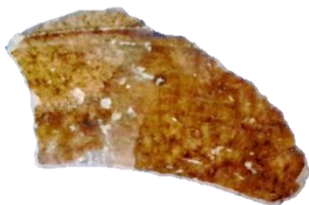
Monochrome Glazed Ware_AAG20



Monochrome Glazed Ware_AAG21



Monochrome Glazed Ware_AAG22



Monochrome Glazed
Ware_AAG23



Monochrome Glazed Ware_AAG24



Monochrome Glazed
Ware_AAG25



Monochrome Glazed
Ware_AAG26



Monochrome Glazed Ware_AAG27



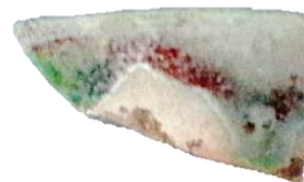
Monochrome Glazed
Ware_AAG28



Monochrome Glazed
Ware_AAG33



Monochrome Glazed Ware_AAG34



Monochrome Glazed
Ware_AAG35



Monochrome Glazed
Ware_AAG36



Monochrome Glazed Ware_AAG42



Monochrome Glazed
Ware_AAG52



Monochrome Glazed
Ware_AAG53



Monochrome Glazed Ware_AAG54



Monochrome Glazed
Ware_AAG55



Monochrome Glazed Ware_AAG56



Monochrome Glazed Ware_AAG63



Monochrome Glazed Ware_AAG71



Monochrome Glazed Ware_MYT172



Monochrome Glazed Ware_MYT173



Monochrome Glazed Ware_MYT174



Monochrome Glazed Ware_MYT189



Monochrome Glazed Ware_MYT190



Monochrome Glazed Ware_MYT193



Monochrome Glazed Ware_MYT198



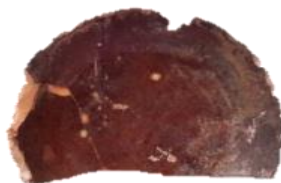
Monochrome Glazed Ware_MYT199



Monochrome Glazed Ware_MYT200



Monochrome Glazed Ware_MYT201



Monochrome Glazed Ware_MYT206



Monochrome Glazed Ware_MYT212



Monochrome Glazed Ware_MYT213



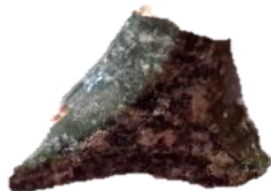
Monochrome Glazed Ware_MYT216



Monochrome Glazed Ware_MYT220



Monochrome Glazed Ware_MYT224



Monochrome Glazed Ware_MYT225



Monochrome Glazed Ware_MYT231



Monochrome Glazed Ware_MYT232



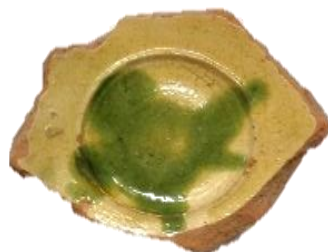
Monochrome Glazed Ware_MYT235



Monochrome Glazed Ware_MYT240



Monochrome Glazed Ware_MYT246



Splashed Ware_CH89



Splashed Ware_CH145



Zeuxippus Ware_CH99



Zeuxippus Ware_CH101



Zeuxippus Ware_CH105



Zeuxippus Ware Subtypes
_AAG43



Zeuxippus Ware Subtypes _AAG46



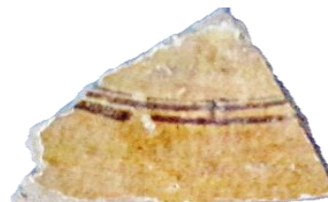
Zeuxippus Ware Subtypes _AAG47



Zeuxippus Ware Subtypes
_AAG48



Zeuxippus Ware Subtypes _AAG49



Zeuxippus Ware Subtypes _AAG50



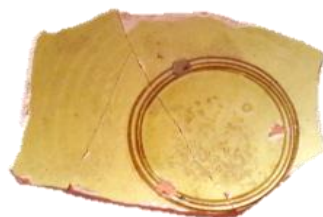
Zeuxippus Ware Subtypes
_AAG51



Zeuxippus Ware Subtypes
_MYT196



Zeuxippus Ware Subtypes _MYT233



Zeuxippus Ware Subtypes
_MYT238



Monochrome and One Colour
Sgraffito Ware _MYT177



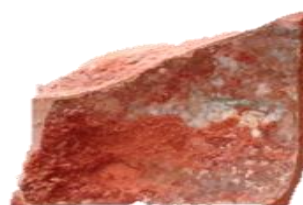
Elaborate Incised Ware _MYT234



Roulette/Veneto Ware _CH82



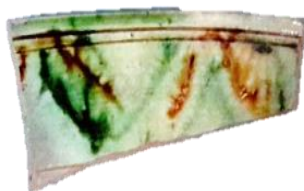
Roulette/Veneto Ware _CH85



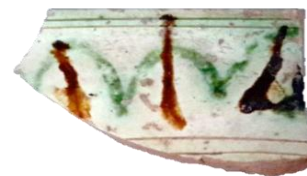
Roulette/Veneto Ware _MYT178



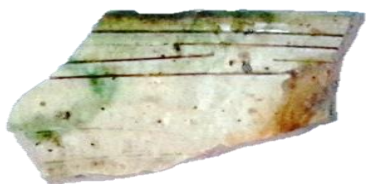
Monochrome Sgraffito
Ware_MYT171



Polychrome Sgraffito
Ware_AAG37



Polychrome Sgraffito
Ware_AAG38



Polychrome Sgraffito Ware_AAG39



Polychrome Sgraffito
Ware_AAG40



Polychrome Sgraffito
Ware_AAG41



Polychrome Sgraffito Ware_AAG60



Polychrome Sgraffito
Ware_AAG62



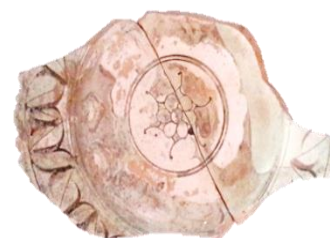
Polychrome Sgraffito
Ware_AGBZY828



Polychrome Sgraffito
Ware_AGBZY829



Polychrome Sgraffito
Ware_AGBZY860



Polychrome Sgraffito
Ware_MYT164



Polychrome Sgraffito Ware_MYT175



Polychrome Sgraffito
Ware_MYT192



Polychrome Sgraffito
Ware_MYT209



Polychrome Sgraffito
Ware_MYT217



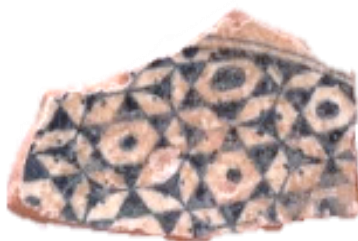
Polychrome Sgraffito
Ware_MYT219



Polychrome Sgraffito
Ware_MYT229



Polychrome Sgraffito
Ware_MYT194



Miletus Ware_MYT167



Miletus Ware_MYT204



Miletus Ware_MYT226



Painted Ware_CH104



Painted Ware_AAG44



Painted Ware_MYT187



Painted Ware_MYT191



Painted Ware_MYT205



Monochrome Painted
Ware_MYT176



Monochrome Painted
Ware_MYT210



Unglazed Painted Ware_MYT207



Polychrome Painted Ware/Maiolica Ware_AGBZY861



Polychrome Painted Ware/Maiolica Ware_AGBZY862



Polychrome Painted Ware/Maiolica Ware_AGBZY863



Polychrome Painted Ware/Maiolica Ware_AAG29



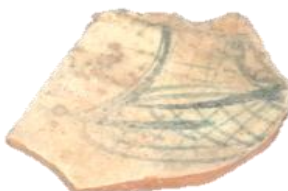
Polychrome Painted Ware/Maiolica Ware_AAG30



Polychrome Painted Ware/Maiolica Ware_AAG31



Polychrome Painted Ware/Maiolica Ware_AAG32



Polychrome Painted Ware/Maiolica Ware_AAG66



Polychrome Painted Ware/Maiolica Ware_AAG67



Polychrome Marbled Ware _CH102



Polychrome Marbled Ware _CH103



Polychrome Marbled Ware _MYT197



Polychrome Marbled Ware _MYT208



Polychrome Marbled Ware _MYT211



Polychrome Marbled Ware _MYT165



Spanish Lustre Ware_AAG68



Kütahya Ware_MYT179



Kütahya Ware_MYT181



Kütahya Ware_MYT183



Kütahya Ware_MYT184



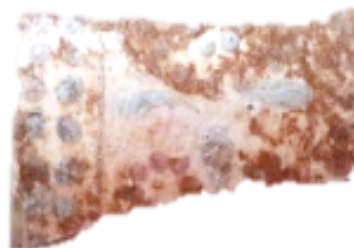
Kütahya Ware_MYT188



Kütahya Ware_MYT169



Kütahya Ware_MYT195



Kütahya Ware_MYT218



Kütahya Ware_MYT230



Kütahya Ware_MYT239



Kütahya Ware_MYT241



Kütahya Ware_MYT242



Didymoteicho Ware_CH100



Didymoteicho Ware_CH135



Overfired Stoneware_MYT202



Tripod stilt_MYT243



Tripod stilt_MYT244



Pottery waster_AGBZY827



Pottery waster_AGBZY832



Pottery waster_AGBZY836



Pottery waster_AGBZY859



Pottery waster_AGBZY864



Pottery waster_AGBZY867

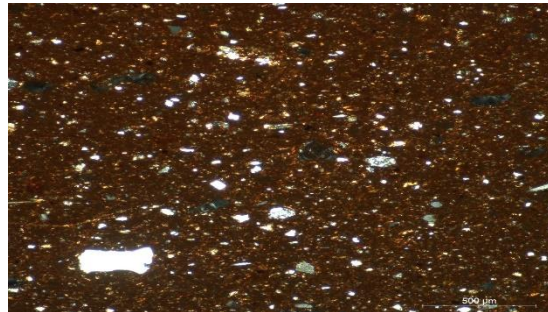
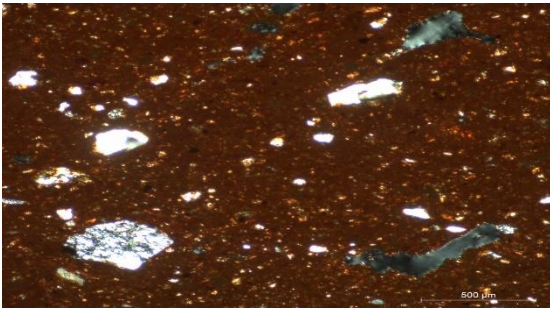


Pottery waster_AGBZY868

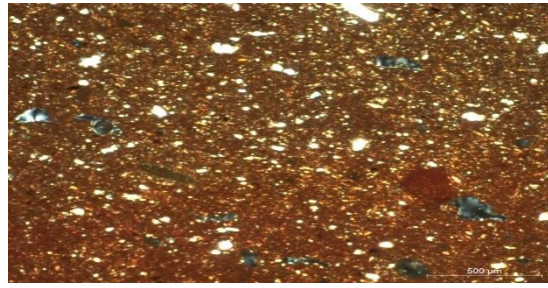


Pottery waster_MYT245

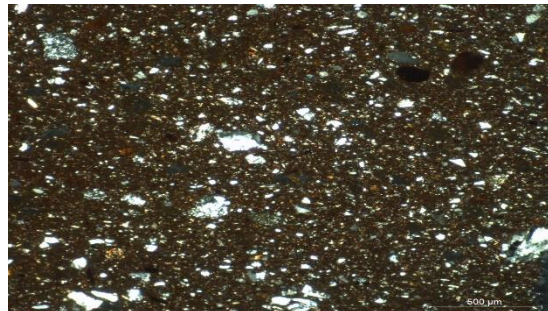
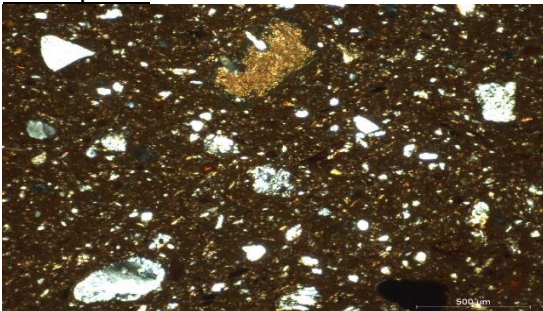
APPENDIX VII PETROGRAPHIC ANALYSIS OF THE STUDIED SAMPLES



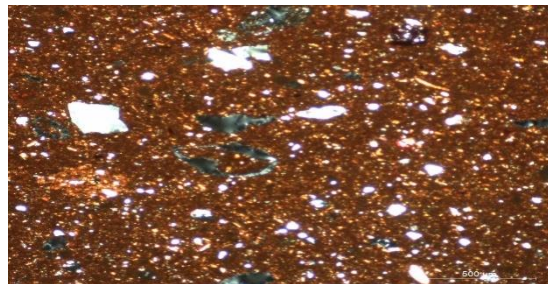
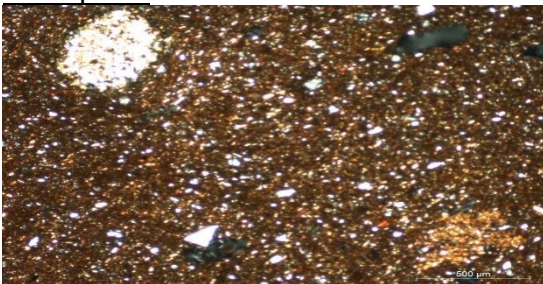
Champlévé CH84



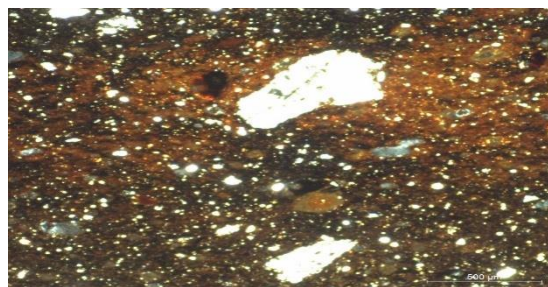
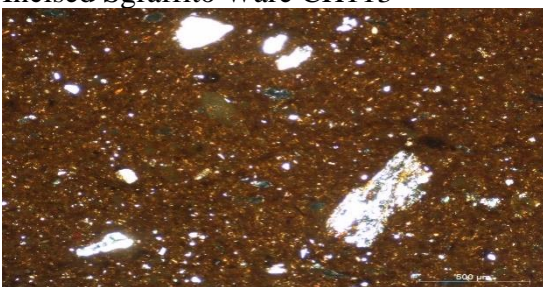
Champlévé CH92



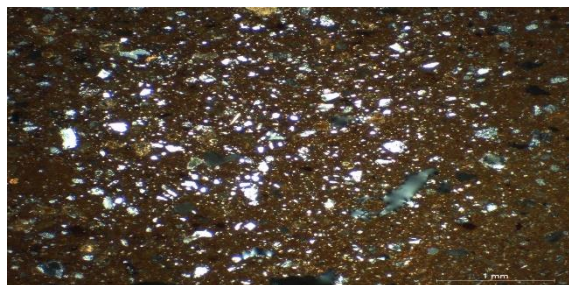
Champlévé CH124



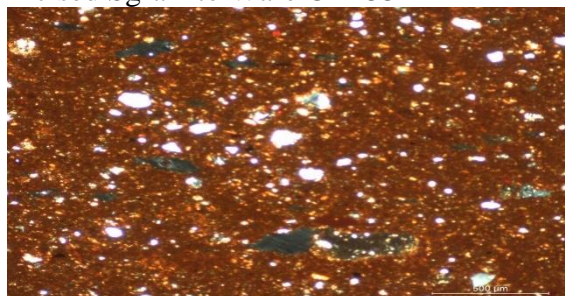
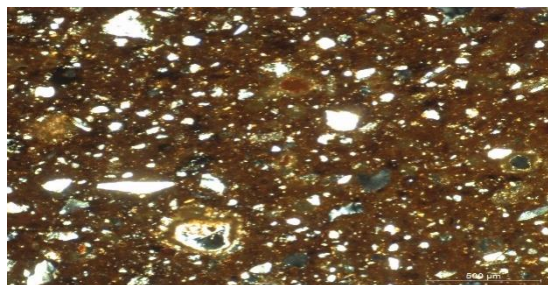
Incised Sgraffito Ware CH113



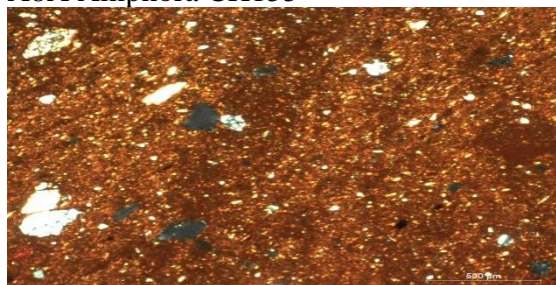
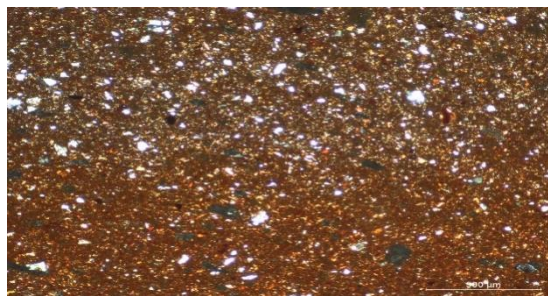
Incised Sgraffito Ware CH114



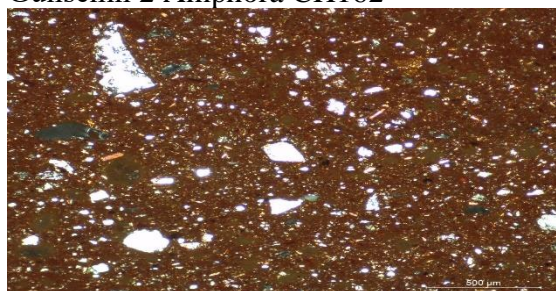
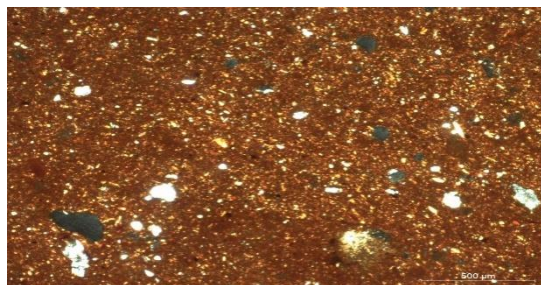
Incised Sgraffito Ware CH133



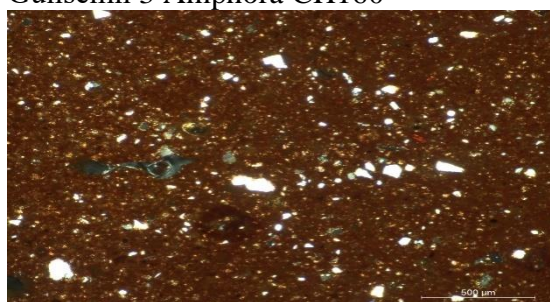
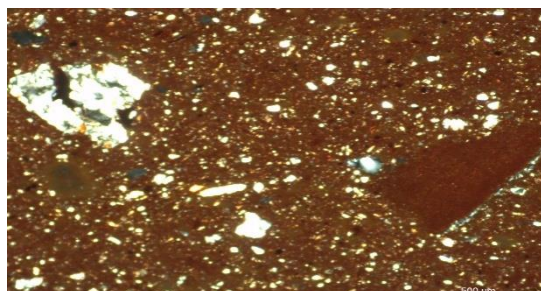
A8A Amphora CH155



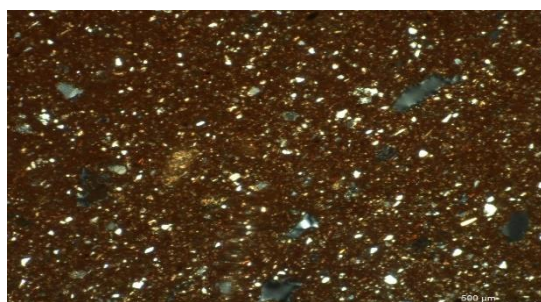
Günsenin 2 Amphora CH162

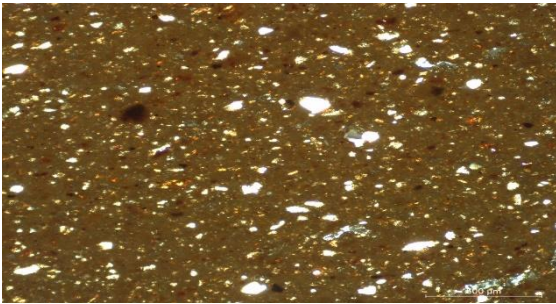


Günsenin 3 Amphora CH160

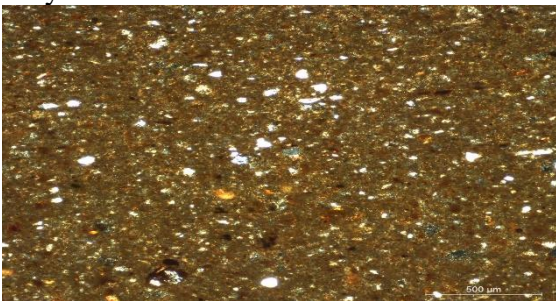
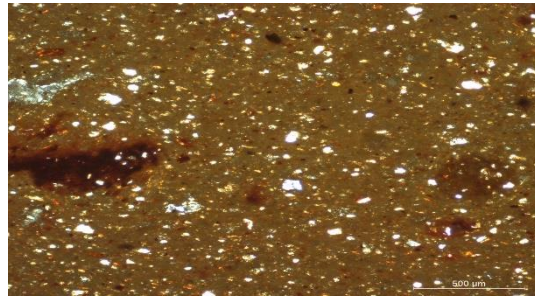


Zeuxippus Ware CH101

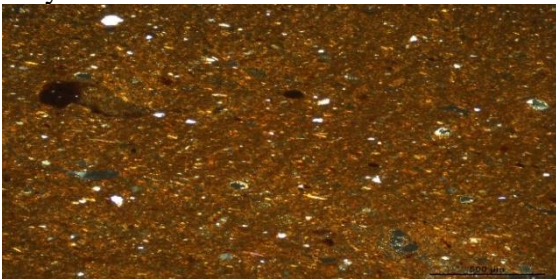
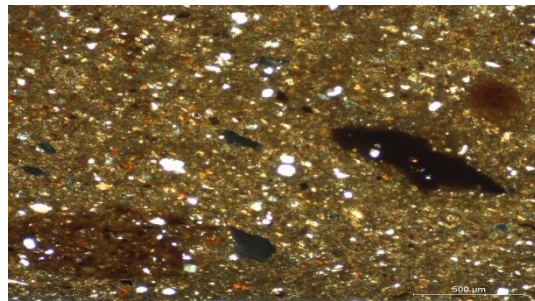




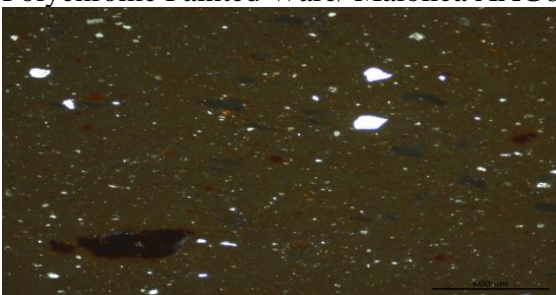
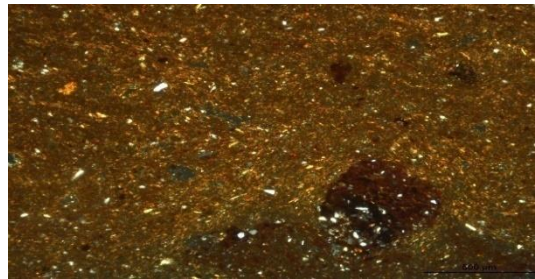
Polychrome Painted Ware/ Maiolica AAG29



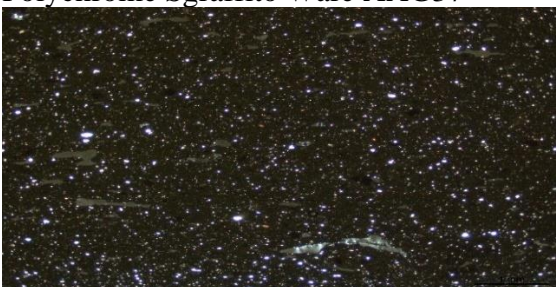
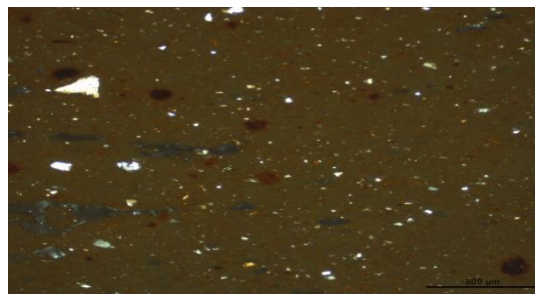
Polychrome Painted Ware/ Maiolica AAG30



Polychrome Painted Ware/ Maiolica AAG66

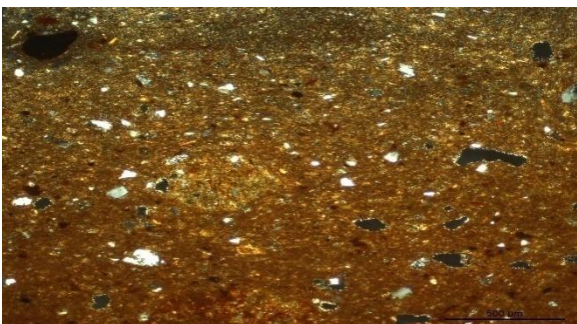


Polychrome Sgraffito Ware AAG37

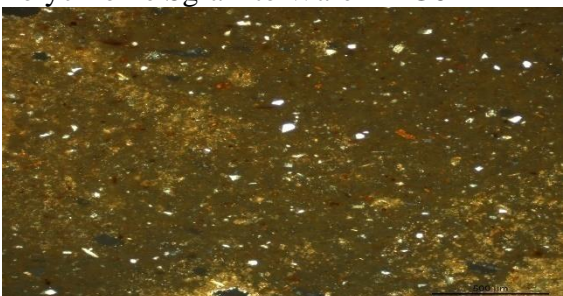
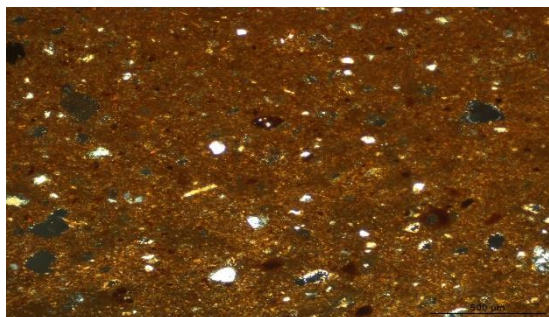


Polychrome Sgraffito Ware AAG60

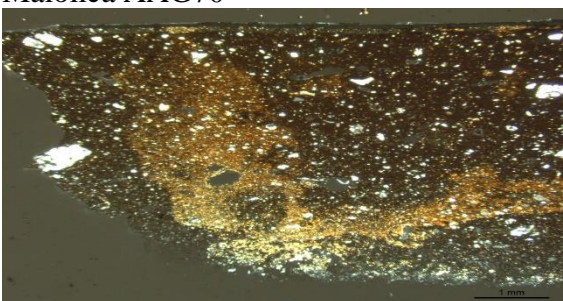
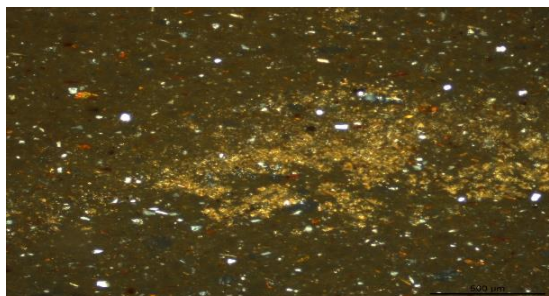




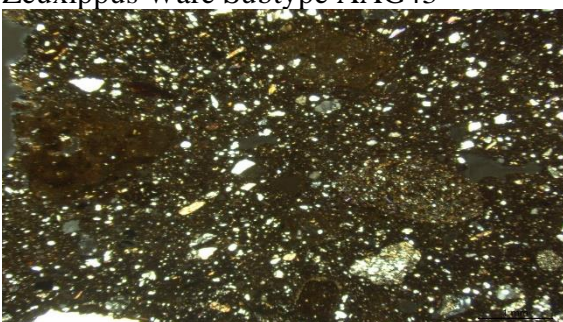
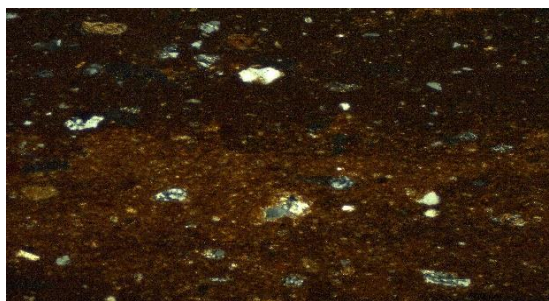
Polychrome Sgraffito Ware AAG62



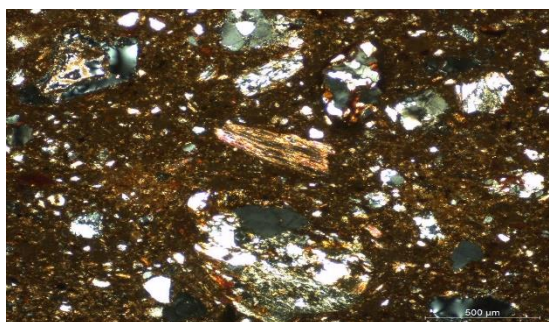
Maiolica AAG70

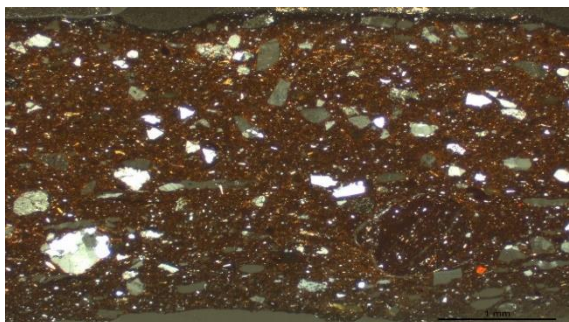


Zeuxippus Ware Subtype AAG43

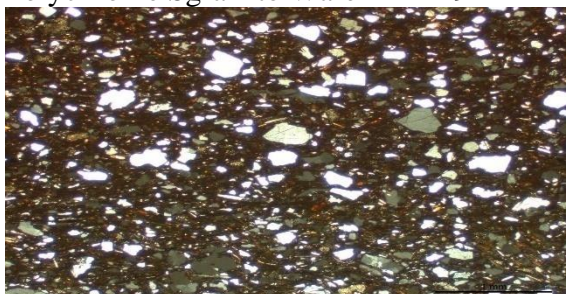
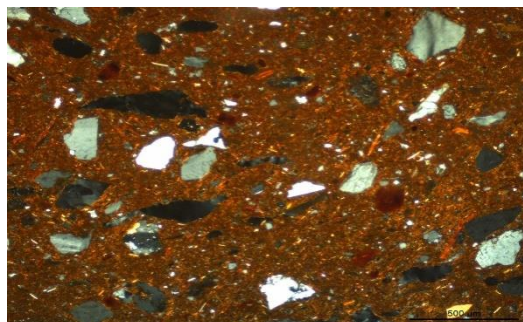


Zeuxippus Ware Subtype AAG50

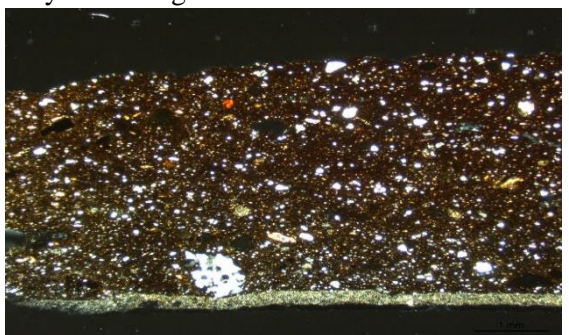
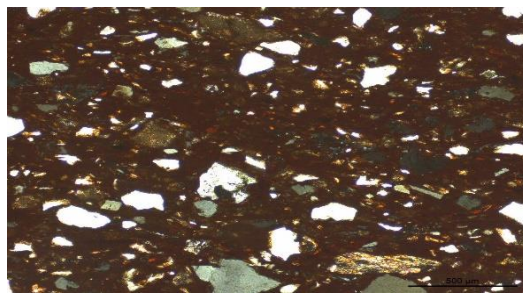




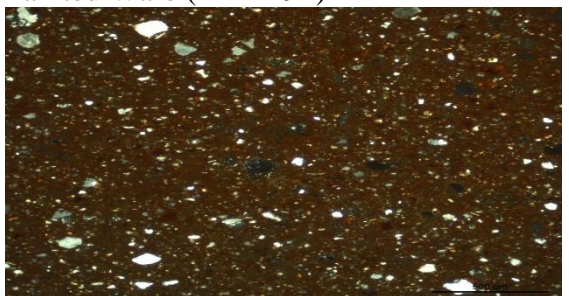
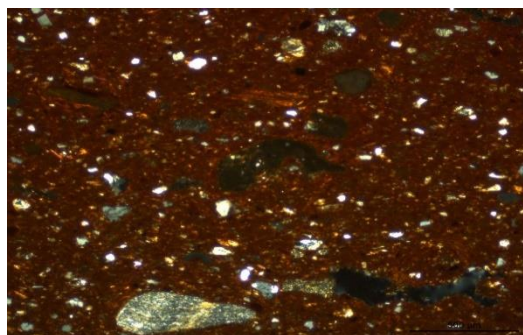
Polychrome Sgraffito Ware MYT194



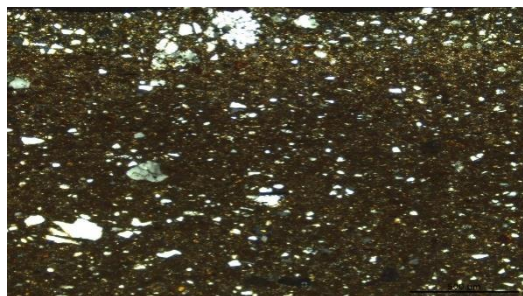
Polychrome Sgraffito Ware MYT209



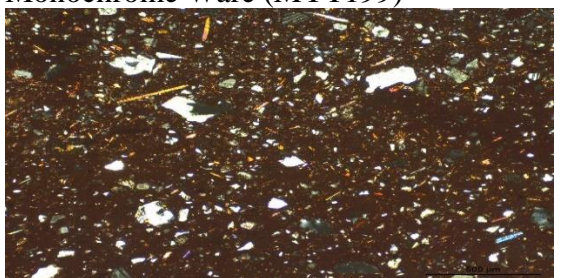
Painted Ware (MYT191)



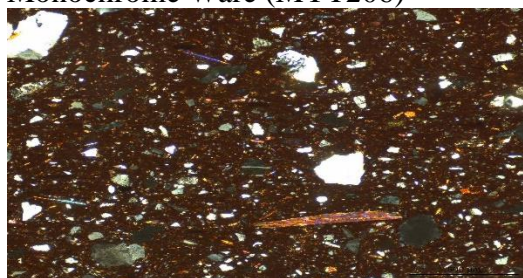
Monochrome Ware (MYT199)

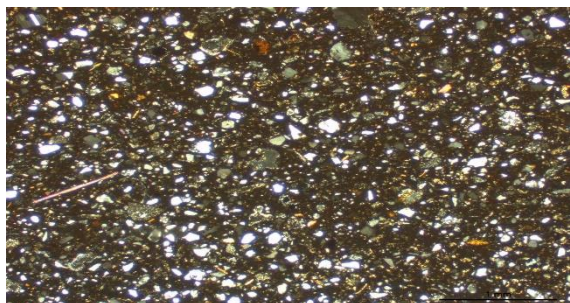


Monochrome Ware (MYT206)

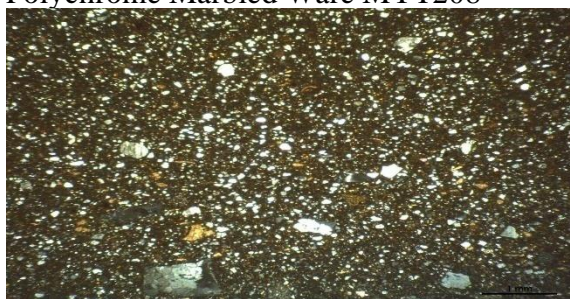
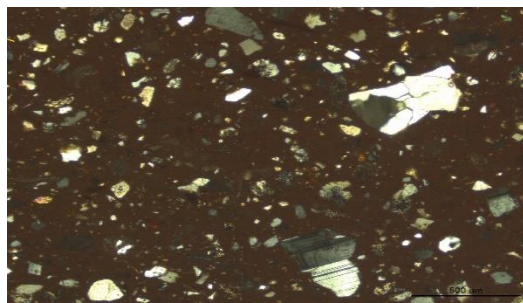


Monochrome Ware (MYT172)

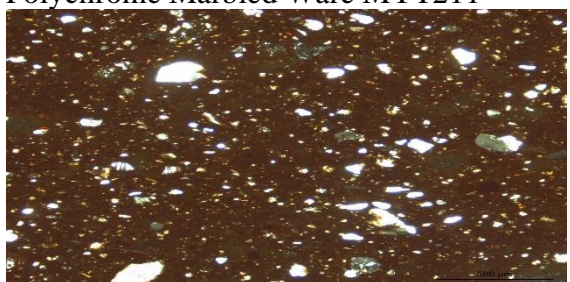




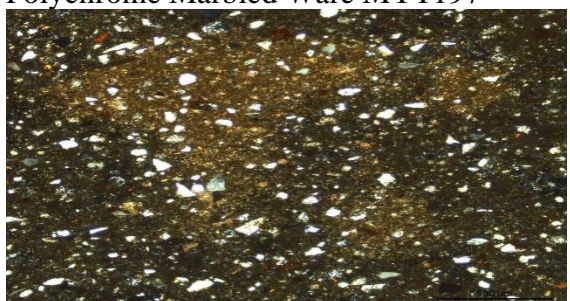
Polychrome Marbled Ware MYT208



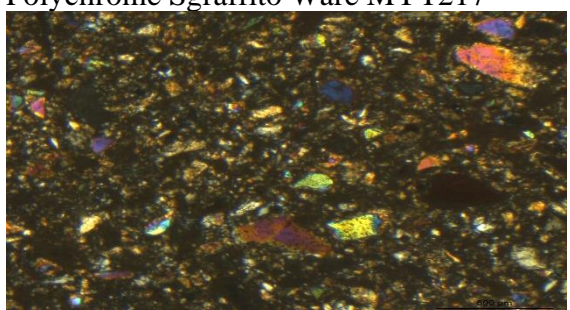
Polychrome Marbled Ware MYT211



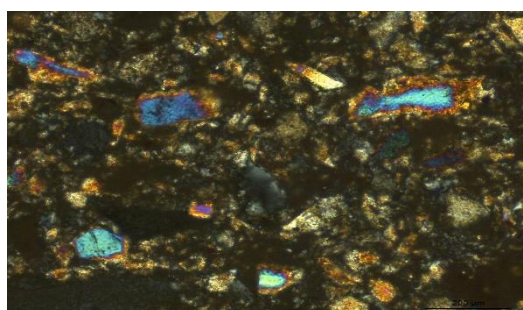
Polychrome Marbled Ware MYT197



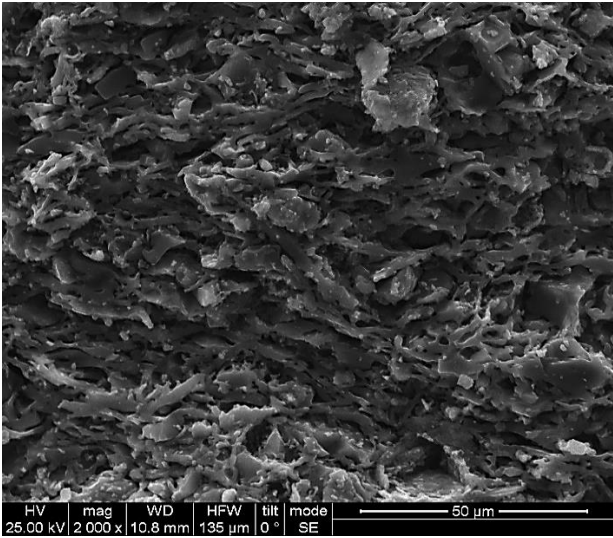
Polychrome Sgraffito Ware MYT217



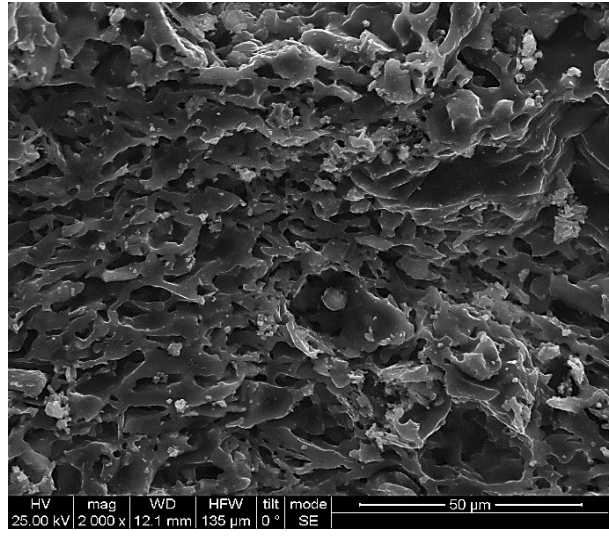
Polychrome Painted Ware MYT228



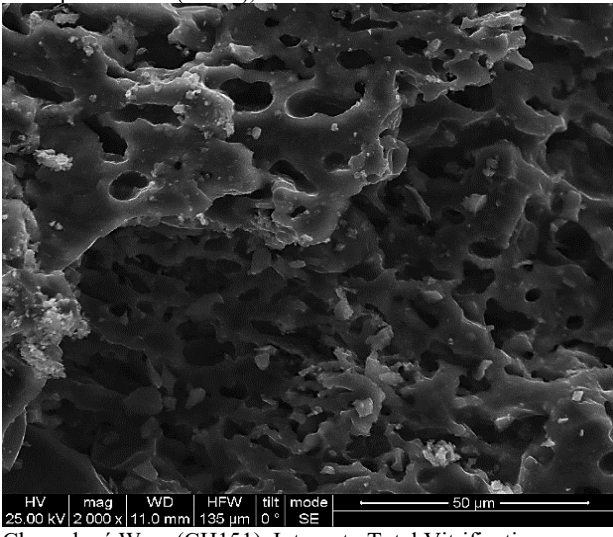
APPENDIX VIII STAGES OF VITRIFICATION THROUGH SCANNING ELECTRON MICROSCOPY OF THE STUDIED SAMPLES



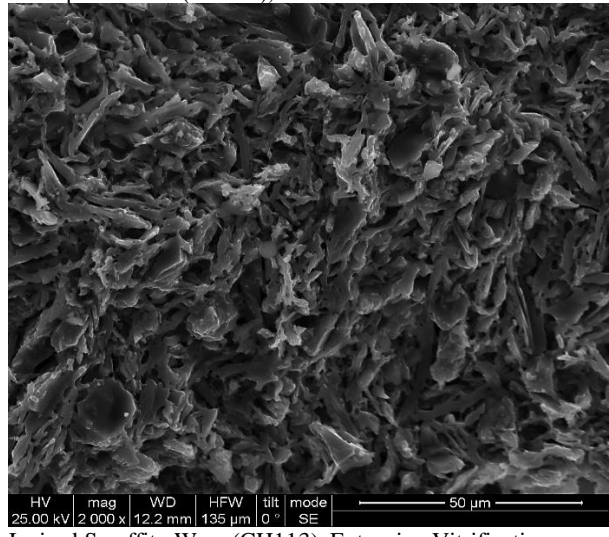
Champlevé Ware (CH92), Intermediate Vitrification



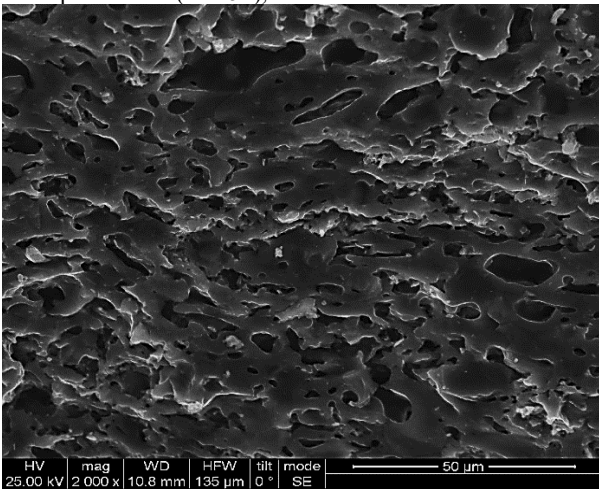
Champlevé Ware (CH141), Interm to Total Vitrification



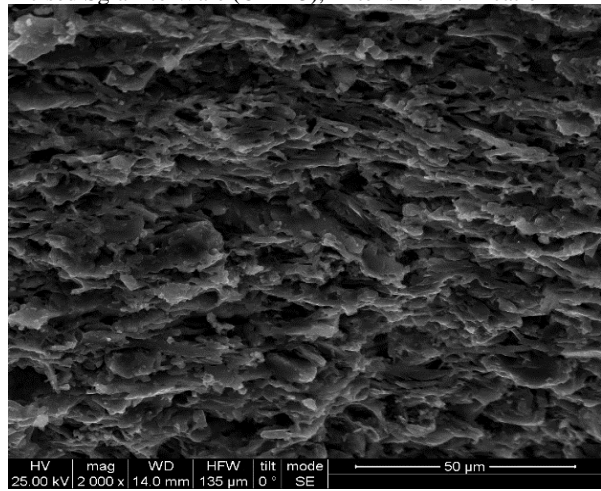
Champlevé Ware (CH151), Interm. to Total Vitrification



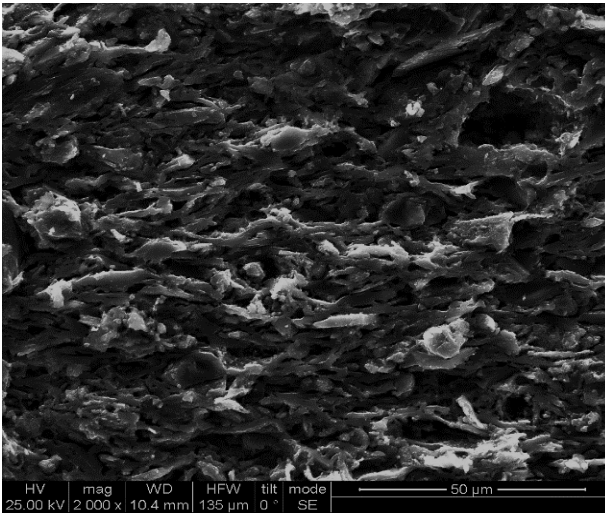
Incised Sgraffito Ware (CH113), Extensive Vitrification



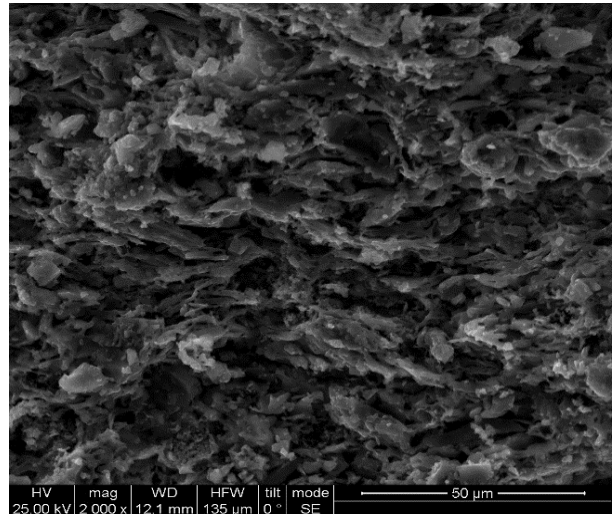
Incised Sgraffito Ware (CH114), EV to Interm. Vitrification



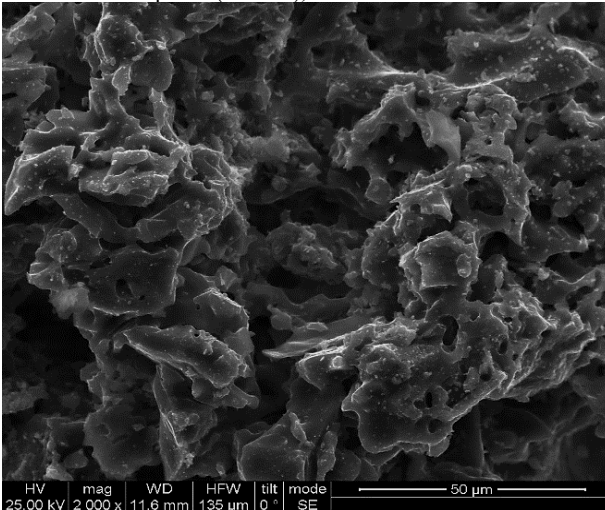
A&A Amphora (CH155), Init. to Extensive Vitrification



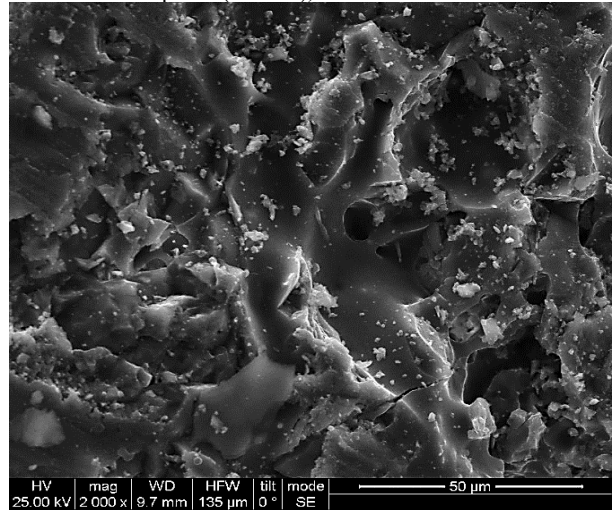
Günsenin 2 Amphora (CH162), Extensive Vitrification



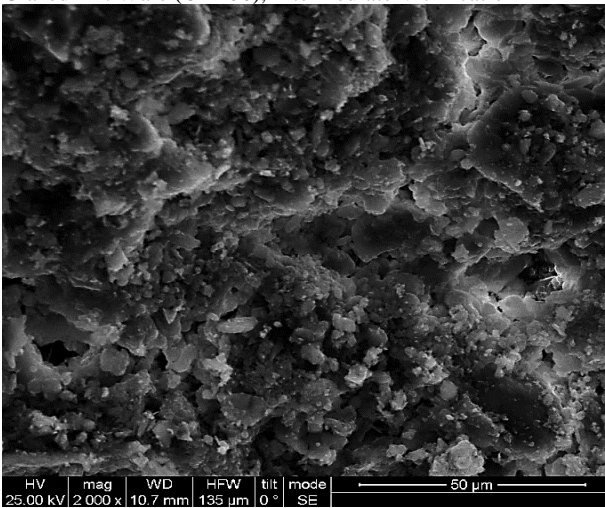
Günsenin 3 Amphora (CH160), Extensive Vitrification



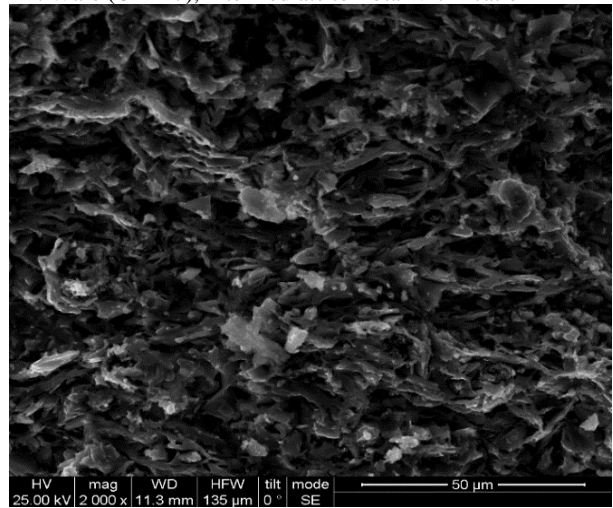
Glazed Frit Ware (CH106), Intermediate Vitrification



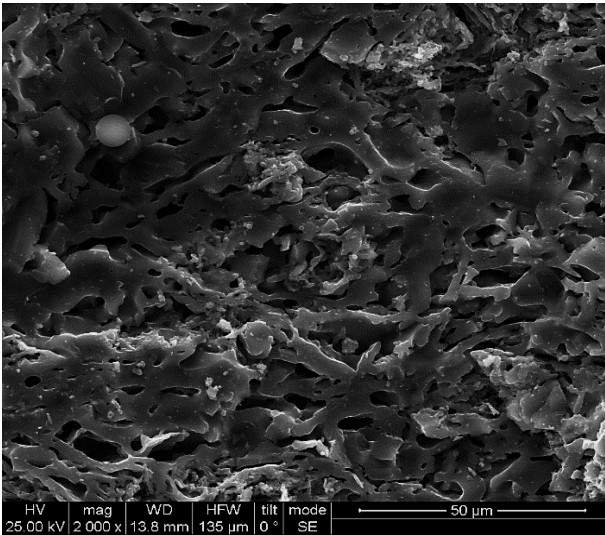
Frit Ware (CH147), Intermediate to Total Vitrification



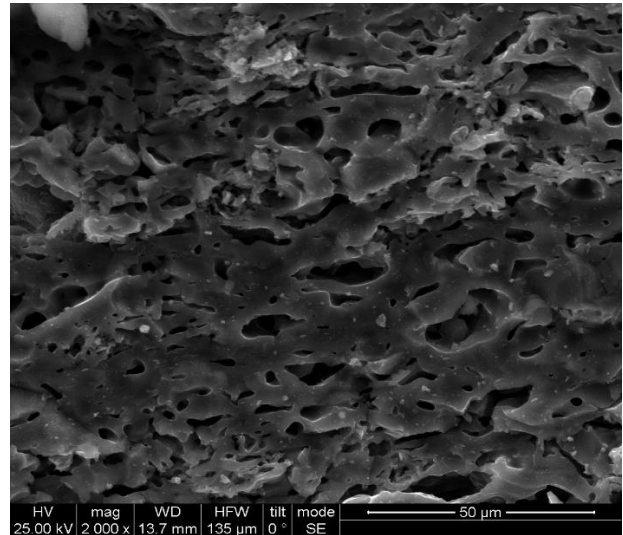
Lustre Ware (CH110), Extensive Vitrification



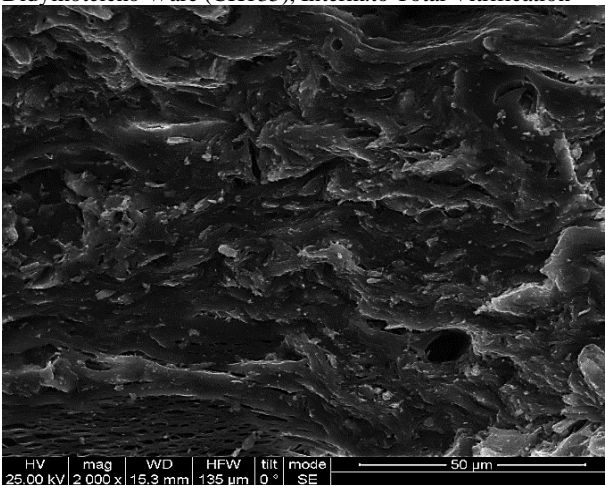
Roulette/Veneto Ware (CH85), Extensive Vitrification



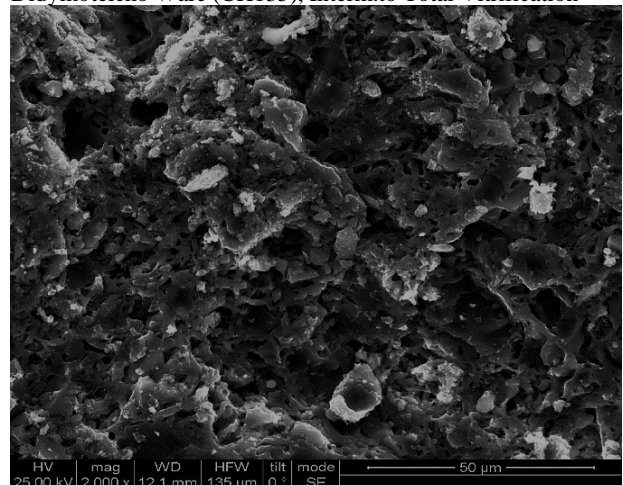
Didymoteicho Ware (CH135), Interm.to Total Vitrification



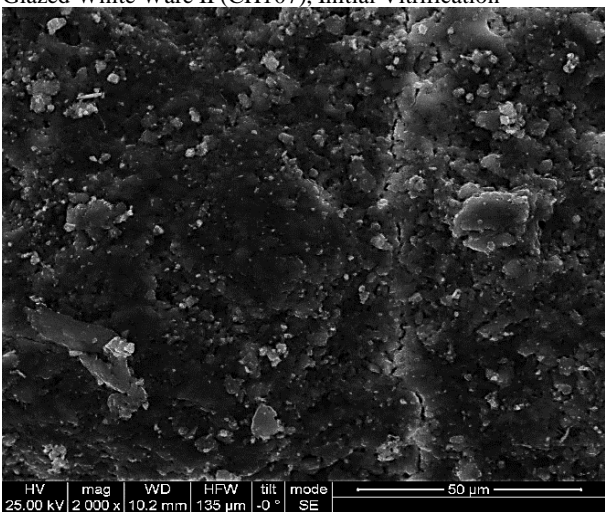
Didymoteicho Ware (CH135), Interm.to Total Vitrification



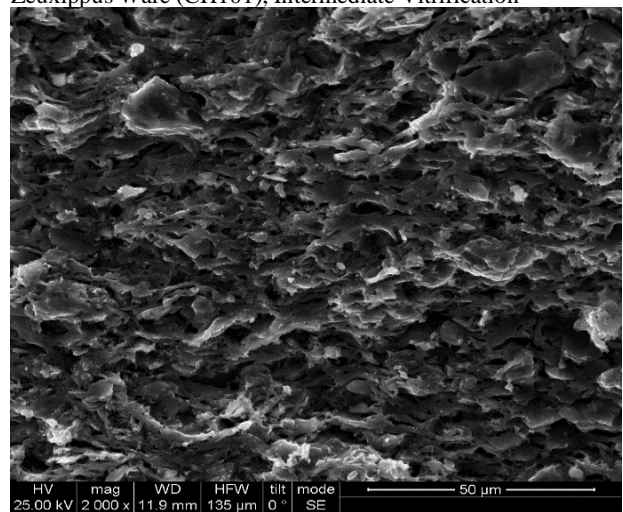
Glazed White Ware II (CH107), Initial Vitrification



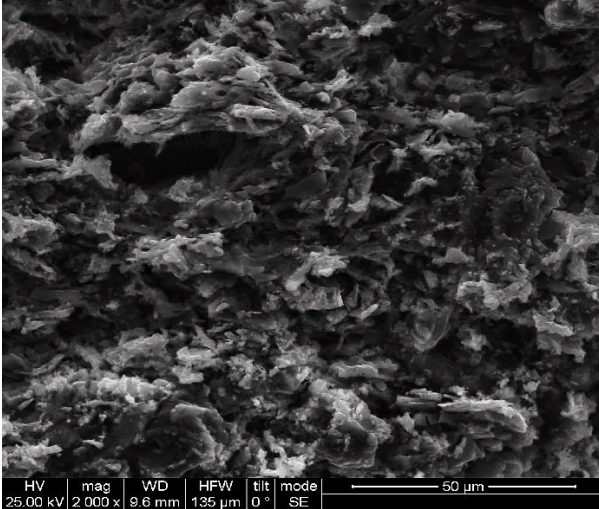
Zeuxippus Ware (CH101), Intermediate Vitrification



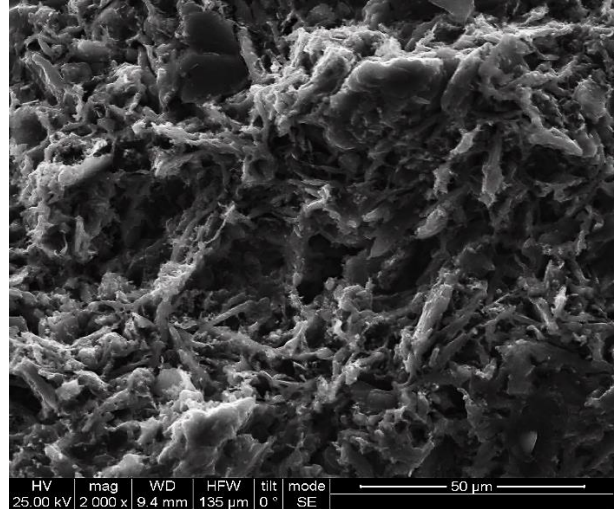
Maiolica (CH154), Extensive Vitrification



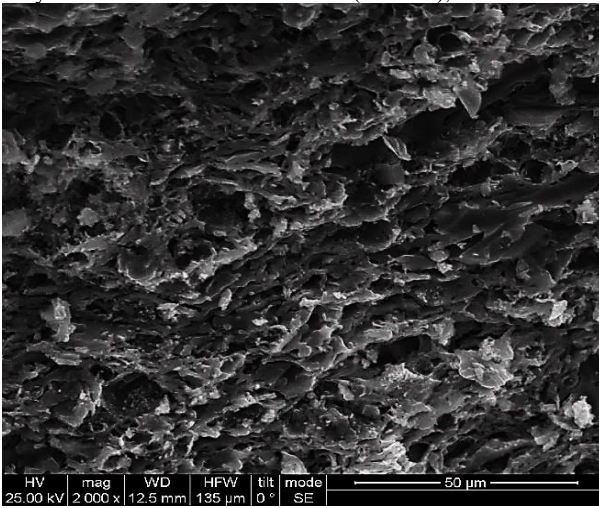
Polychrome Marbled Ware (CH103), Intermediate Vitrification



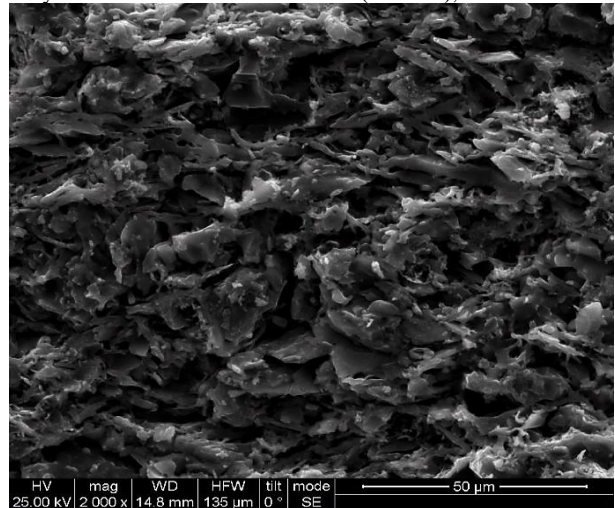
Polychrome Painted Ware/Maiolica (AAG29), E.Vitrification



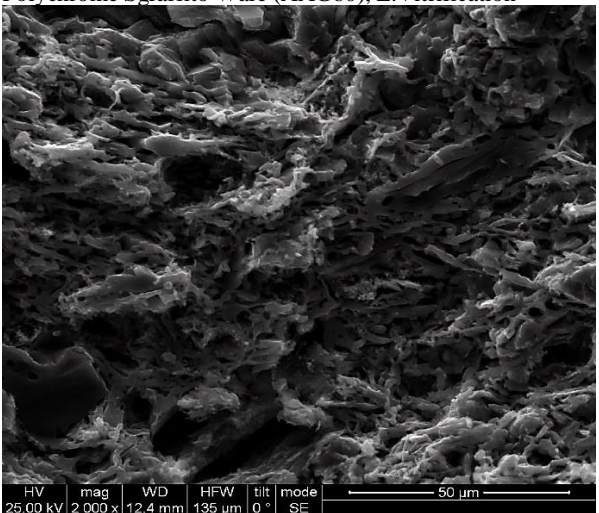
Polychrome Painted Ware/Maiolica (AAG30), E.Vitrification



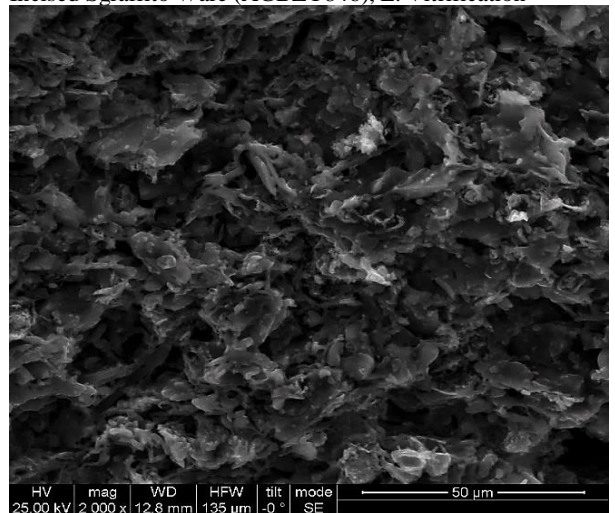
Polychrome Sgraffito Ware (AAG60), E.Vitrification



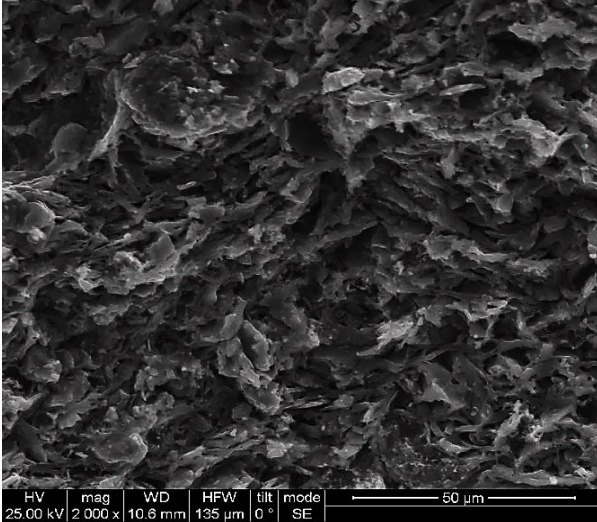
Incised Sgraffito Ware (AGBZY846), E. Vitrification



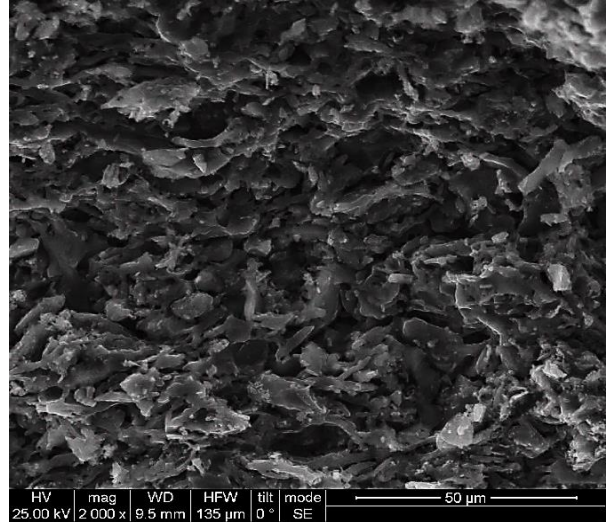
Green and Brown Painted Ware (AAG69), Ext. to Intermediate Vitrification



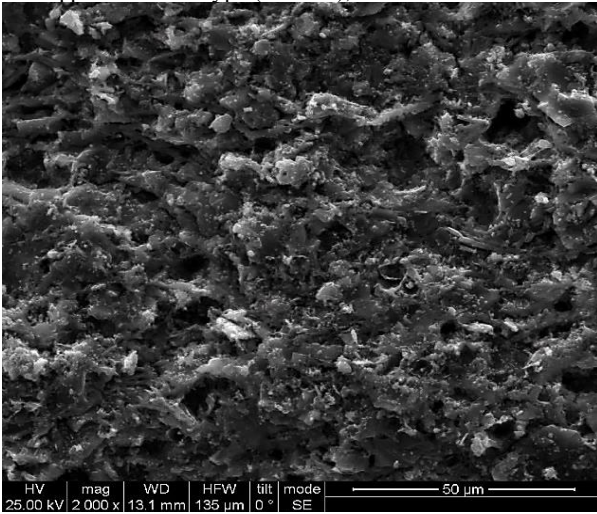
Green and Brown Painted Ware (AGBZY853), Ext. to Intermediate Vitrification



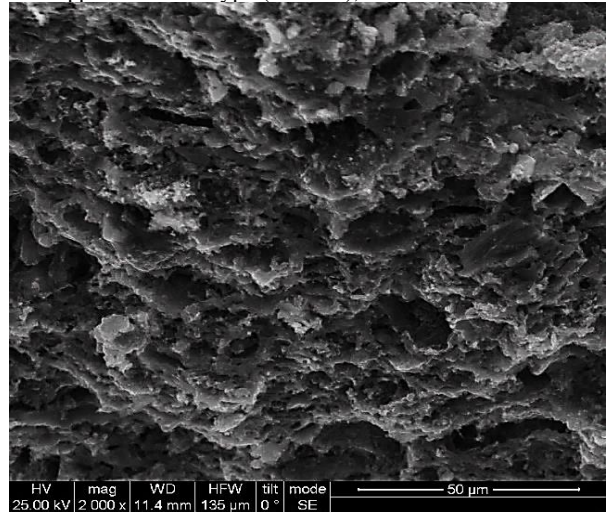
Zeuxippus Ware Subtype (AAG43), In. to E. Vitrification



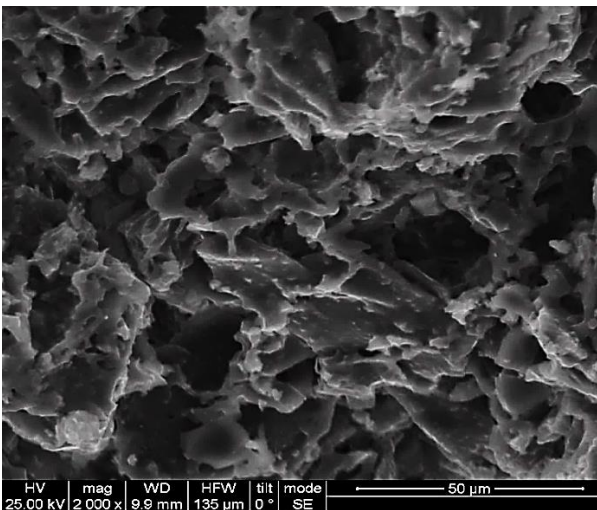
Zeuxippus Ware Subtype (AAG50), In. to E. Vitrification



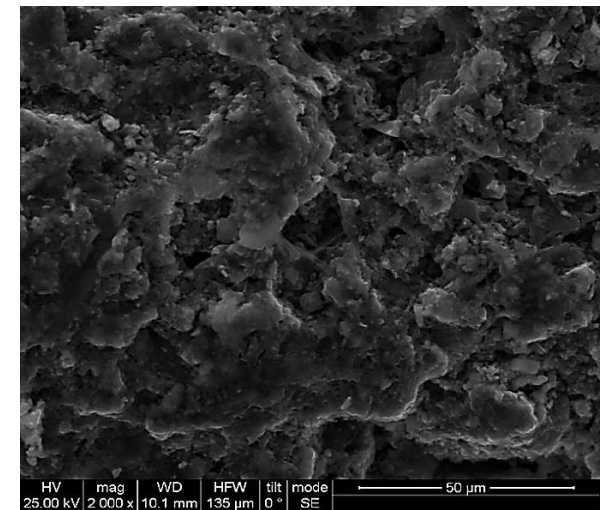
Spanish Lustre Ware (AAG68), Extensive Vitrification



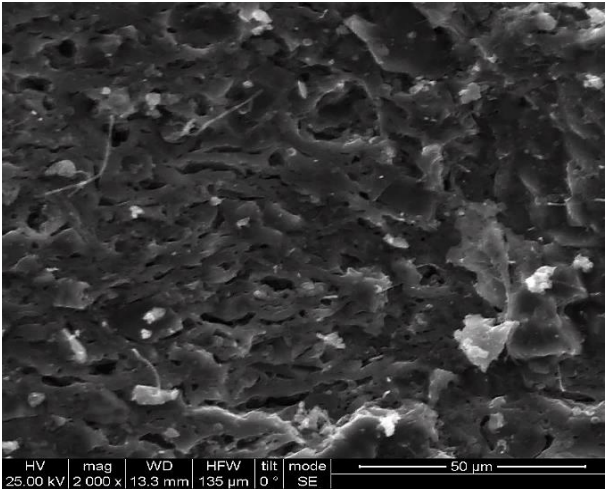
Maiolica (AAG70), Extensive Vitrification



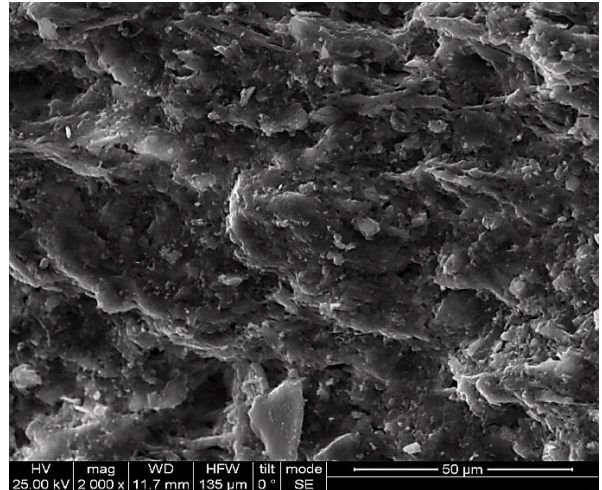
Polychrome Painted Ware (MYT228), Int. to T. Vitrification



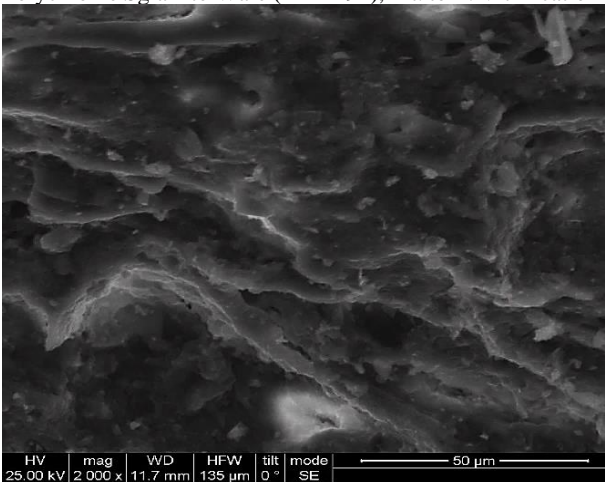
Painted Ware (MYT187), Int. to Total Vitrification



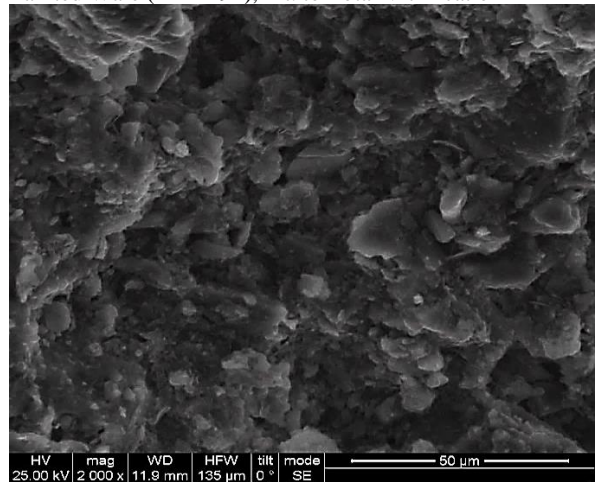
Polychrome Sgraffito Ware (MYT194), Int. to T. Vitrification



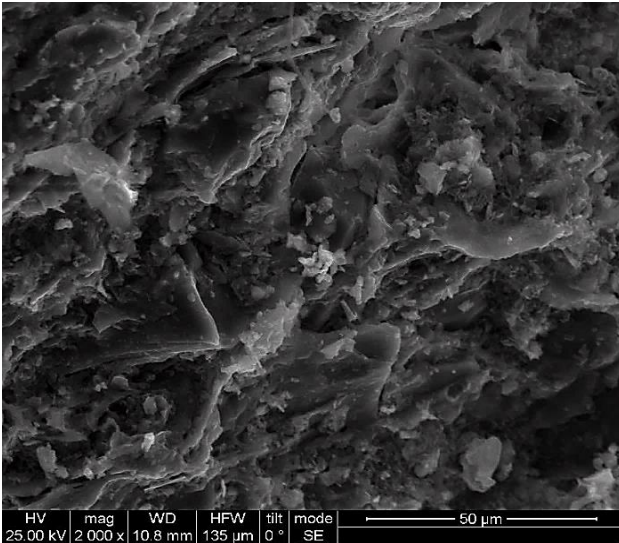
Painted Ware (MYT191), Int. to Total Vitrification



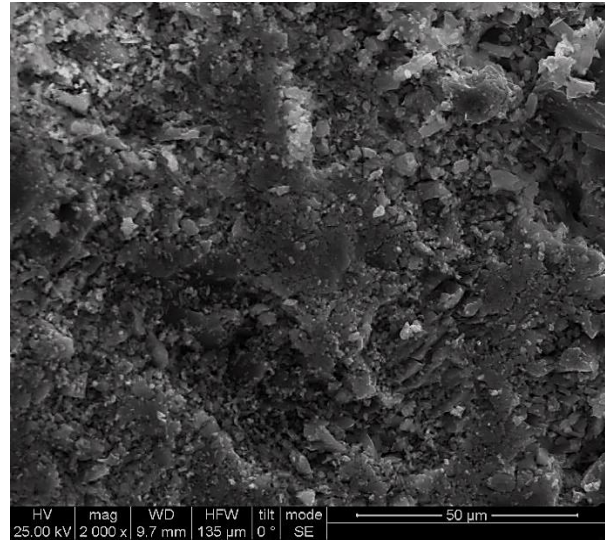
Polychrome Sgraffito Ware (MYT209), Total Vitrification



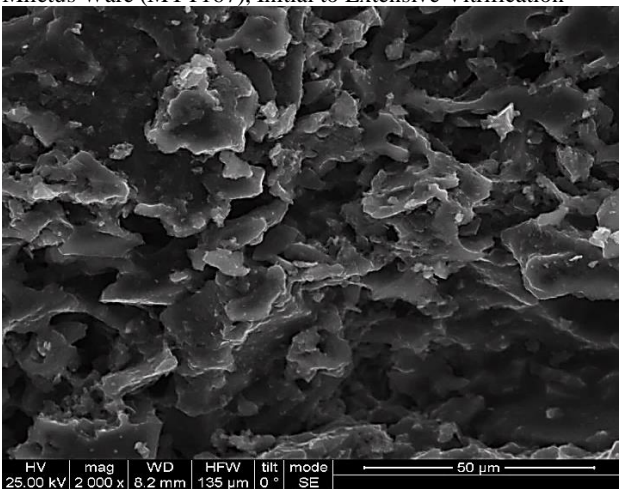
Glazed White Ware IV (MYT203), Initial Vitrification



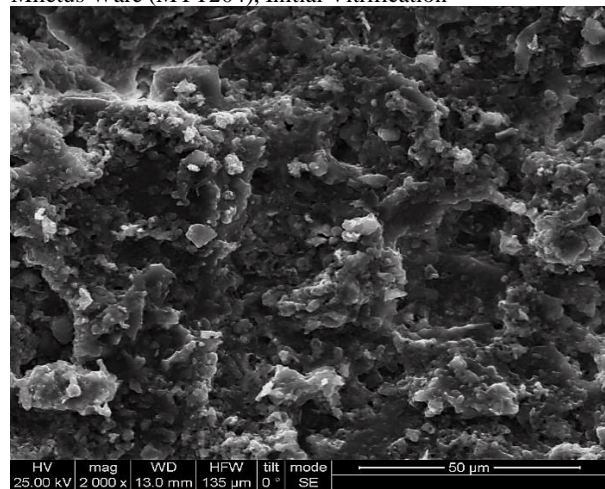
Miletus Ware (MYT167), Initial to Extensive Vitrification



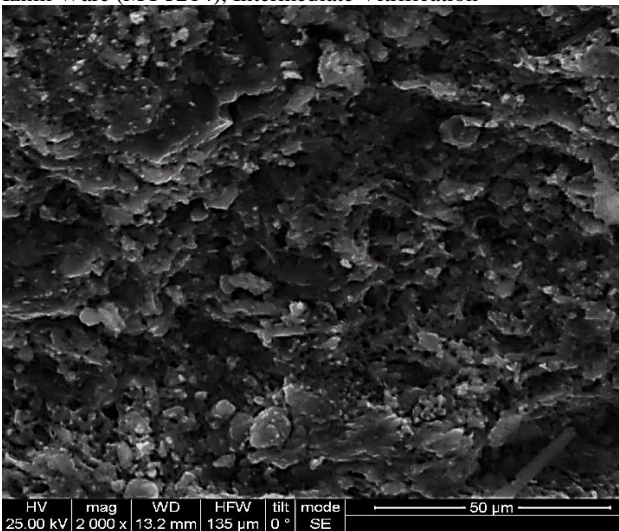
Miletus Ware (MYT204), Initial Vitrification



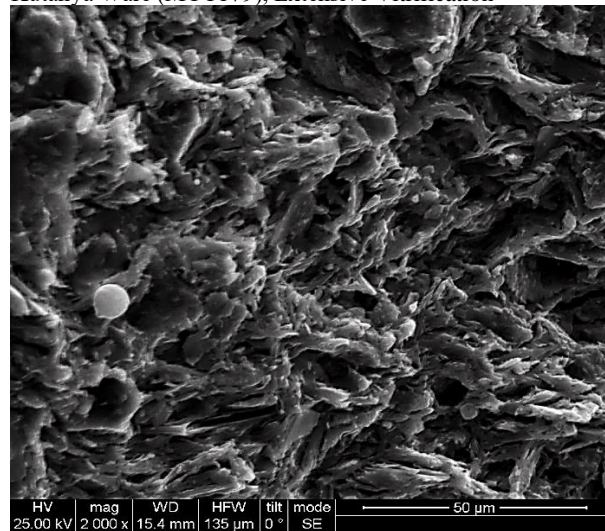
Iznik Ware (MYT214), Intermediate Vitrification



Kütahya Ware (MYT179), Extensive Vitrification



Polychrome Marbled Ware (MYT211), Extensive Vitrification



Roulette/Veneto Ware (MYT178), Extensive Vitrification

APPENDIX IX EDX-SCANNING ELECTRON MICROSCOPY RESULTS OF FRESH FRACTURED SAMPLES FROM CHALCIS IN EUBOEA, THE ATHENIAN AGORA IN ATTICA AND THE CASTLE OF MYTILENE IN LESVOS

SAMPLES			Na2O	MgO	Al2O3	SiO2	P2O5	SO3	Cl2O	K2O	CaO	TiO2	MnO	Fe2O3	CuO	ZnO	SnO2	PbO
Champlevé Ware	CH84	<i>average</i>	0.0	1	5.7	16.5	0.0	12.8	0.7	0.5	1.8	0.0	0.0	2.9	0.0	0.0	0.0	58.1
		<i>stdev</i>	0.0	0.1	0.6	4.6	0.0	8.5	0.5	0.2	0.2	0.0	0.0	0.03	0.0	0.0	0.0	13.2
Champlevé Ware	CH92	<i>average</i>	0.3	1.1	5.7	21	0.0	19.6	0.8	0.2	1.8	0.4	0.0	2.7	0.0	0.0	0.0	50
		<i>stdev</i>	0.2	0.1	0.7	1	0.0	1.4	0.2	0.2	0.6	0.0	0.0	1	0.0	0.0	0.0	4
Champlevé Ware	CH151	<i>average</i>	0.9	1.2	12	40.2	0.0	13	0.8	1.7	2.7	0.0	0.0	2.5	0.0	0.0	0.0	25
		<i>stdev</i>	0.2	0.3	1.7	6.4	0.0	1.7	0.3	0.3	1.2	0.0	0.0	0.8	0.0	0.0	0.0	7
Incised Sgraffito Ware	CH133	<i>average</i>	0.0	0	5.8	32.9	0.0	11.4	0.0	0	2.1	0.0	0.0	3	0.0	0.0	0.0	44.8
		<i>stdev</i>	0.0	0	1.2	3.1	0.0	1.3	0.0	0	0.3	0.0	0.0	1.7	0.0	0.0	0.0	1.8
Monochrome Glazed Ware	CH128	<i>average</i>	0.8	0.9	7.3	29.8	0.0	15.6	0.0	1.5	1.5	0.5	0.0	1.5	0.0	0.0	0.0	40.6
		<i>stdev</i>	0.3	0.4	0.6	2.7	0.0	0.7	0.0	0.04	0.1	0.2	0.0	0.1	0.0	0.0	0.0	4
Monochrome Glazed Ware	CH137	<i>average</i>	2	1.2	8.3	33.8	0.0	13.6	0.2	3.8	1.7	0.0	0.0	2.2	0.0	0.0	0.0	33.2
		<i>stdev</i>	2	1.2	8.3	33.8	0.0	13.6	0.2	3.8	1.7	0.0	0.0	2.2	0.0	0.0	0.0	33.2
Splashed Ware	CH145	<i>average</i>	1.1	1.5	12.2	44.3	0.0	7.3	0.0	2.6	3.9	0.1	0.0	4.3	0.0	0.0	0.0	22.8
		<i>stdev</i>	0.4	0.5	1.1	1.7	0.0	1.6	0.0	0.1	1.6	0.1	0.0	1.7	0.0	0.0	0.0	0.8
Slip-Painted Ware	CH121	<i>average</i>	0.0	0.0	4.8	22.4	0.0	7.2	0.0	1.5	2.7	0.0	0.0	5.3	0.0	0.0	0.0	56
		<i>stdev</i>	0.0	0.0	0.7	1.9	0.0	0.4	0.0	0.04	0.7	0.0	0.0	0.1	0.0	0.0	0.0	1.6
Slip-Painted Ware	CH138	<i>average</i>	0.5	0.7	7.4	27.7	0.0	17.8	0.8	1.2	2.5	0.0	0.0	1.9	0.0	0.0	0.0	39.6
		<i>stdev</i>	0.2	0.4	1	0.8	0.0	2.1	0.07	0.6	0.5	0.0	0.0	1.5	0.0	0.0	0.0	2
Plain Glazed Ware	CH88	<i>average</i>	0.0	1.9	9.8	34.9	0.0	13.8	0.1	1.2	1.5	0.4	0.0	5.8	0.0	0.0	0.0	30.6
		<i>stdev</i>	0.0	1.3	7.2	22.3	0.0	0.4	0.1	1.4	0.8	0.5	0.0	4.8	0.0	0.0	0.0	4
Polychrome Marbled Ware	CH102	<i>average</i>	0.0	0.7	3.9	30.3	0.0	16.1	0.0	1.1	1.7	0.6	0.0	1.6	0.0	0.0	0.0	43.9
		<i>stdev</i>	0.0	0.2	0.5	2.4	0.0	0.8	0.0	0.3	1.1	0.6	0.0	0.4	0.0	0.0	0.0	4.1
Polychrome Marbled Ware	CH103	<i>average</i>	0.1	0.0	3.1	25.9	0.0	18.8	11.8	0.7	0.5	0.0	0.0	1	0.0	0.0	0.0	38.1
		<i>stdev</i>	0.2	0.0	0.4	1.5	0.0	1.4	23.6	0.1	0.2	0.0	0.0	0.7	0.0	0.0	0.0	25.4
Roulette/Veneto Ware	CH82	<i>average</i>	0.4	1	3.3	15.6	0.0	14.9	0.7	0.4	1	0.0	0.0	3.6	0.0	0.0	0.0	59.1
		<i>stdev</i>	0.6	0.6	2	10.7	0.0	9.5	0.4	0.2	0.6	0.0	0.0	0.7	0.0	0.0	0.0	24.5
Roulette/Veneto Ware	CH85	<i>average</i>	1.1	1.8	7	23.1	0.0	20.5	1.1	0.7	2.1	0.3	0.0	2.6	0.0	0.0	0.0	39.7
		<i>stdev</i>	0.6	0.8	1.1	2.2	0.0	0.9	0.3	0.2	0.1	0.2	0.0	0.1	0.0	0.0	0.0	5.3
Lustre Ware	CH110	<i>average</i>	2	0	2.8	39.4	0.0	13.1	1	1.7	2.1	0.0	0.0	1.1	0.0	0.0	0.0	36.8
		<i>stdev</i>	12.6	12.9	13.3	13.7	10.5	10.8	0.4	11.1	11.6	12.3	0.5	13.1	0.4	0.6	0.5	14

Scanning Electron Microscopy results of fresh fractured samples of glazes from Chalcis in Euboea (%).

SAMPLES			Na2O	MgO	Al2O3	SiO2	P2O5	SO3	Cl2O	K2O	CaO	TiO2	Fe2O3
Champlevé Ware	CH84	<i>average</i>	1.1	4.6	18.5	50.6	0.0	0.0	0.0	3.7	9.4	1.3	10.8
		<i>stdev</i>	0.2	1.6	2.7	2.1	0.0	0.0	0.0	0.4	2.6	0.2	1.3
Champlevé Ware	CH92	<i>average</i>	1.3	2.6	21.4	53.4	0.0	0.0	0.0	3.8	5.6	1.1	10.3
		<i>stdev</i>	0.1	0.2	1.4	2.4	0.0	0.0	0.0	0.4	0.5	0.2	2.0
Champlevé Ware	CH124	<i>average</i>	0.0	4.6	8.0	20.8	5.0	3.0	0.0	2.0	48.5	0.0	8.1
		<i>stdev</i>	0.0	0.8	3.3	9.3	1.5	0.7	0.0	1.0	13.0	0.0	1.4
Champlevé Ware	CH141	<i>average</i>	1.7	2.5	18.8	55.1	0.0	0.9	0.0	3.2	7.6	0.9	9.3
		<i>stdev</i>	0.1	0.2	0.3	1.1	0.0	0.1	0.0	0.2	0.8	0.2	0.3
Champlevé Ware	CH148	<i>average</i>	1.2	2.3	17.5	54.5	0.0	0.0	0.0	3.9	8.1	1.1	11.3
		<i>stdev</i>	0.1	0.2	0.2	0.5	0.0	0.0	0.0	0.2	1	0.1	0.2
Champlevé Ware	CH151	<i>average</i>	0.8	6.6	9.6	36	1.8	0.3	0.2	2.4	33.3	0.0	8.9
		<i>stdev</i>	0.2	0.2	1.9	6	0.3	0.6	0.4	0.3	8.6	0.0	1.1
Incised Sgraffito Ware	CH113	<i>average</i>	1.3	2.3	19.8	52.5	0.0	0.5	0.0	4.5	6.2	1.0	11.9
		<i>stdev</i>	0.1	0.3	1.6	3.8	0.0	0.4	0.0	1.1	0.8	0.3	3.3
Incised Sgraffito Ware	CH114	<i>average</i>	1.2	2.7	20.9	54.7	0.0	0.0	0.0	4.0	6.3	0.0	10.2
		<i>stdev</i>	0.3	0.1	1.1	1.0	0.0	0.0	0.0	0.3	0.2	0.0	1.4
Incised Sgraffito Ware	CH133	<i>average</i>	1.7	2.4	18.6	57.8	0.0	0.0	0.0	3.1	7.4	0.7	8.5
		<i>stdev</i>	0.2	0.0	0.6	1.4	0.0	0.0	0.0	0.2	0.3	0.1	1.2
Incised Sgraffito Ware	CH150	<i>average</i>	1.1	4.4	15	56	0.0	0.0	0.0	2.4	11.5	1	8.6
		<i>stdev</i>	0.1	0.04	0.01	1.5	0.0	0.0	0.0	0.02	1.4	0.03	0.2
Monochrome Glazed Ware	CH126	<i>average</i>	1.2	4.7	17.8	50.2	0.9	1.8	0.0	3.4	9.8	0.9	9.3
		<i>stdev</i>	0.2	0.8	1.1	1.5	0.2	0.6	0.0	0.2	1.7	0.0	0.6
Monochrome Glazed Ware	CH128	<i>average</i>	1.5	2.5	21.6	53.7	0.0	0.8	0.0	3.5	6.0	1.0	9.4
		<i>stdev</i>	0.1	0.3	0.3	0.6	0.0	0.1	0.0	0.1	0.3	0.1	0.5
Monochrome Glazed Ware	CH137	<i>average</i>	0.0	3.0	18.5	47.6	0.0	0.0	0.0	4.4	17.2	0.0	9.3
		<i>stdev</i>	0.0	0.8	1.0	1.2	0.0	0.0	0.0	0.1	2.4	0.0	1.2
Splashed Ware	CH89	<i>average</i>	1.3	2.7	20.6	53.0	0.0	0.0	0.0	4.0	6.8	1.5	10.4
		<i>stdev</i>	0.2	0.2	0.1	1.1	0.0	0.0	0.0	0.3	0.1	0.1	0.7
Splashed Ware	CH145	<i>average</i>	1.2	2.9	18.4	56.5	0.0	0.0	0.0	3.5	7.8	0.6	9.1
		<i>stdev</i>	0.1	0.5	0.5	1.6	0.0	0.0	0.0	0.2	0.8	0.1	0.5

Scanning Electron Microscopy results of fresh fractured fabrics from Chalcis in Euboea (%).

SAMPLES			Na2O	MgO	Al2O3	SiO2	P2O5	SO3	Cl2O	K2O	CaO	TiO2	Fe2O3
Slip-Painted Ware	CH94	<i>average</i>	1.6	3.0	22.1	53.9	0.0	0.3	0.0	3.4	5.3	0.9	9.5
		<i>stdev</i>	0.2	0.5	0.9	0.3	0.0	0.6	0.0	0.4	0.4	0.6	1.3
Slip-Painted Ware	CH121	<i>average</i>	1.1	1.9	17.0	49.4	0.0	0.8	0.0	4.2	8.3	1.5	15.8
		<i>stdev</i>	0.1	0.1	0.7	2.2	0.0	0.6	0.0	0.1	0.4	0.5	1.7
Slip-Painted Ware	CH138	<i>average</i>	1.3	2.6	21.0	53.8	0.0	0.0	0.0	4.1	5.8	1.1	10.4
		<i>stdev</i>	0.1	0.0	0.1	0.7	0.0	0.0	0.0	0.2	0.5	0.1	0.2
Plain Glazed Ware	CH88	<i>average</i>	0.0	3.0	17.4	62.4	0.0	0.0	0.2	3.0	2.5	1.2	10.3
		<i>stdev</i>	0.0	0.1	0.5	0.2	0.0	0.0	0.0	0.0	0.2	0.1	0.2
Plain Glazed Ware	CH125	<i>average</i>	0.7	3.1	17.5	52.9	0.0	0.0	0.0	3.8	10.2	1.1	10.8
		<i>stdev</i>	0.6	0.2	1.7	1.3	0.0	0.0	0.0	0.3	1	0.3	1
Unglazed Plain Ware	CH134	<i>average</i>	1.1	1.8	16.7	59.6	0.0	0.0	0.0	3.8	6.7	1.0	9.4
		<i>stdev</i>	0.2	0.3	2.5	6.0	0.0	0.0	0.0	0.5	2.3	0.2	2.0
A8A amphora	CH155	<i>average</i>	1.5	0.0	22.2	54.1	0.0	0.0	0.0	3.8	6.3	0.9	11.2
		<i>stdev</i>	0.1	0.0	0.5	0.2	0.0	0.0	0.0	0.2	0.9	0.3	0.6
A8A amphora	CH156	<i>average</i>	1	0.0	22.5	54	0.0	0.0	0.0	4.3	6.5	0.9	11
		<i>stdev</i>	0.04	0.0	0.2	0.5	0.0	0.0	0.0	0.1	0.2	0.1	0.4
A8A amphora	CH157	<i>average</i>	0.9	0.0	22.2	53.7	0.0	0.0	0.0	4.3	6.6	1	11.4
		<i>stdev</i>	0.2	0.0	0.9	2.3	0.0	0.0	0.0	0.4	0.8	0.2	2
Günsenin 3 Amphora	CH158	<i>average</i>	1.8	2.5	19.8	55.2	0.0	0.0	0.0	3.1	8	0.7	8.9
		<i>stdev</i>	0.1	0.1	0.3	0.6	0.0	0.0	0.0	0.1	0.7	0.1	0.3
Günsenin 3 Amphora	CH159	<i>average</i>	1	0.0	21.7	53	0.0	0.0	0.0	4.2	6.8	0.9	12.3
		<i>stdev</i>	0.2	0.0	0.2	0.3	0.0	0.0	0.0	0.1	0.3	0.1	1
Günsenin 3 Amphora	CH160	<i>average</i>	1.7	2.6	21.2	53.9	0.0	0.0	0.0	3.4	6.3	0.7	10.1
		<i>stdev</i>	0.3	0.01	0.1	2.8	0.0	0.0	0.0	0.6	0.2	0.7	1.04
Günsenin 2 Amphora	CH161	<i>average</i>	1.6	0.0	18.8	55.2	0.0	0.0	0.0	3.8	7.7	0.9	12.1
		<i>stdev</i>	0.1	0.0	0.9	1.7	0.0	0.0	0.0	0.04	0.3	0.2	2.3
Günsenin 2 Amphora	CH162	<i>average</i>	1	2.4	21.9	51.9	0.0	0.0	0.0	4	6.5	1	11.3
		<i>stdev</i>	0.1	0.2	1.2	0.7	0.0	0.0	0.0	0.1	0.8	0.1	1.4
Günsenin 2 Amphora	CH163	<i>average</i>	1.3	2.5	20.5	53.8	0.0	0.0	0.0	3.8	7.1	0.9	10.2
		<i>stdev</i>	0.02	0.1	0.6	0.9	0.0	0.0	0.0	0.2	0.7	0.02	0.6

Scanning Electron Microscopy results of fresh fractured fabrics from Chalcis in Euboea (%).

SAMPLES			Na2O	MgO	Al2O3	SiO2	P2O5	SO3	Cl2O	K2O	CaO	TiO2	Fe2O3
Didymoteicho Ware	CH135	<i>average</i>	1.4	2.6	21.9	54.3	0.0	0.0	0.0	3.8	5.0	1.2	9.8
		<i>stdev</i>	0.3	0.3	0.8	0.4	0.0	0.0	0.0	0.1	0.3	0.4	0.9
Polychrome Marbled Ware	CH102	<i>average</i>	0.6	2.7	17.4	52.2	0.0	0.0	0.0	3.4	9.7	1.4	12.7
		<i>stdev</i>	0.1	0.1	0.5	1.5	0.0	0.0	0.0	0.1	0.7	0.2	1.8
Polychrome Marbled Ware	CH103	<i>average</i>	0.7	3.3	19.9	55.4	0.0	0.0	0.0	2.8	7.2	1.2	9.6
		<i>stdev</i>	0.1	0.3	0.4	1.0	0.0	0.0	0.0	0.1	0.1	0.3	0.9
Roulette/Veneto Ware	CH82	<i>average</i>	0.6	6.2	14.3	44.9	1.0	2.4	0.0	3.5	18.0	0.6	8.5
		<i>stdev</i>	0.1	0.7	3.4	6.5	0.5	1.2	0.0	0.5	9.8	0.2	1.5
Roulette/Veneto Ware	CH85	<i>average</i>	1.3	2.6	20.3	53.4	0.0	0.0	0.0	3.7	7.2	1.1	10.4
		<i>stdev</i>	0.2	0.1	0.2	0.5	0.0	0.0	0.0	0.0	0.6	0.1	0.4
Maiolica	CH154	<i>average</i>	0.0	6.1	7.6	30.6	3.4	2.4	0.0	1.4	44	0.0	4.5
		<i>stdev</i>	0.0	0.4	0.7	4.08	0.7	0.6	0.0	0.2	4	0.0	0.6
Polychrome White Ware	CH108	<i>average</i>	0.0	0.6	24.0	68.1	0.0	0.0	0.0	0.6	0.6	1.3	4.8
		<i>stdev</i>	0.0	0.1	1.0	1.6	0.0	0.0	0.0	0.0	0.0	0.2	0.6
Glazed White Ware II	CH107	<i>average</i>	0.3	0.9	24.7	63.5	0.0	0.0	0.0	2.4	1.0	1.1	6.2
		<i>stdev</i>	0.1	0.1	0.6	1.2	0.0	0.0	0.0	0.5	0.6	0.1	0.3
Zeuxippus Ware	CH101	<i>average</i>	0.9	2.5	19.2	54.6	0.0	0.0	0.0	4.5	6.1	1.2	11.1
		<i>stdev</i>	0.2	0.1	0.4	0.8	0.0	0.0	0.0	0.1	0.6	0.1	0.8
Glazed Frit Ware	CH106	<i>average</i>	3.3	0.0	10.8	82.3	0.0	0.0	0.0	1.8	2.0	0.0	0.0
		<i>stdev</i>	0.3	0.0	0.5	0.1	0.0	0.0	0.0	0.1	0.3	0.0	0.0
Glazed Frit Ware	CH109	<i>average</i>	0.0	5.7	12.6	49.5	1.3	0.0	0.5	3.2	18.7	0.7	7.9
		<i>stdev</i>	0.0	1.0	1.7	4.0	0.1	0.0	0.1	0.4	3.9	0.6	2.2
Frit Ware	CH147	<i>average</i>	0.0	0.0	20.8	71.6	0.0	0.0	0.0	1.8	4.2	0.0	1.7
		<i>stdev</i>	0.0	0.0	2.5	1.7	0.0	0.0	0.0	0.2	1.6	0.0	0.3
Lustre Ware	CH110	<i>average</i>	0.0	6.7	12.1	45.6	1.3	0.0	0.0	2.8	20.3	0.0	11.3
		<i>stdev</i>	0.0	1.6	1.8	3.6	0.7	0.0	0.0	0.5	2.6	0.0	1.5

Scanning Electron Microscopy results of fresh fractured fabrics from Chalcis in Euboea (%).

SAMPLES			Na2O	MgO	Al2O3	SiO2	P2O5	SO3	Cl2O	K2O	CaO	TiO2	MnO	Fe2O3	CoO	CuO	ZnO	SnO2	PbO
Polychrome Painted Ware/Maiolica	AAG66	<i>average</i>	0.6	1.1	3.3	26.5	0.0	19.2	1.2	0.4	1.5	0.0	0.0	1	0.0	0.0	0.0	0.0	45.3
		<i>stdev</i>	0.3	0.3	0.2	1.4	0.0	1.1	0.1	0.1	0.3	0.0	0.0	0.2	0.0	0.0	0.0	0.0	0.0
Polychrome Painted Ware/Maiolica	AAG67	<i>average</i>	1.7	1	4.9	45.6	0.0	12.7	0.0	5.7	2.9	0.0	0.0	1.8	0.0	0.0	0.0	0.0	23.7
		<i>stdev</i>	0.3	0.3	0.6	3.8	0.0	1.6	0.0	0.8	1	0.0	0.0	0.3	0.0	0.0	0.0	0.0	0.0
Incised Sgraffito Ware	AGBZY841	<i>average</i>	0.9	1.2	5.5	23.1	0.0	19.4	0.0	1.2	1.8	0.5	0.0	1.2	0.0	0.0	0.0	0.0	45.1
		<i>stdev</i>	0.5	0.6	1	2.2	0.0	0.5	0.0	0.2	0.2	0.1	0.0	0.2	0.0	0.0	0.0	0.0	0.0
Incised Sgraffito Ware	AGBZY846	<i>average</i>	0.6	0.7	5.9	23	0.0	22.9	0.0	0.7	2.5	0.5	0.0	1.1	0.0	0.3	0.0	0.0	41.8
		<i>stdev</i>	0.3	0.2	0.9	2.5	0.0	1.4	0.0	0.03	0.7	0.1	0.0	0.2	0.0	0.3	0.0	0.0	0.0
Monochrome Glazed Ware	AAG71	<i>average</i>	1	1.1	15	35	0.0	13.3	0.0	2.8	2.5	0.0	0.0	2.6	0.0	0.0	0.0	0.0	26.8
Green and Brown Painted Ware	AAG69	<i>stdev</i>	0.3	0.4	1.7	4.7	0.0	0.5	0.0	0.01	0.1	0.0	0.0	0.6	0.0	0.0	0.0	0.0	6
		<i>average</i>	0.9	1.2	7.9	33.2	0.0	16.4	0.0	1.4	2.3	0.0	0.0	3	0.0	0.0	0.0	0.0	33.8
Green and Brown Painted Ware	AGBZY853	<i>stdev</i>	0.4	0.2	0.3	2	0.0	0.4	0.0	0.05	0.7	0.0	0.0	0.2	0.0	0.0	0.0	0.0	2.2
		<i>average</i>	0.6	0.6	17.4	42.1	0.0	8.6	0.0	3.2	1.6	0.8	0.0	1.7	0.0	0.0	0.0	0.0	23.5
Slip-Painted Ware	AAG59	<i>stdev</i>	0.04	0.01	1.2	0.6	0.0	0.5	0.0	0.2	0.4	0.1	0.0	0.8	0.0	0.0	0.0	0.0	0.2
		<i>average</i>	0.3	0.9	2.2	17.7	0.0	24.7	0.0	0.3	1	0.0	0.0	3.3	0.0	0.0	0.0	0.0	49.6
Zeuxippus Ware Subtype	AAG43	<i>stdev</i>	0.02	0.1	0.2	0.3	0.0	0.91	0.0	0.1	0.02	0.0	0.0	0.4	0.0	0.0	0.0	0.0	0.7
		<i>average</i>	1.5	1.6	6.1	21.7	0.0	19.2	1.2	0.6	1.8	0.0	0.0	2.2	0.0	0.0	0.0	0.0	44.2
Zeuxippus Ware Subtype	AAG47	<i>stdev</i>	0.1	0.1	0.4	1.7	0.0	0.7	0.2	0.1	0.1	0.0	0.0	0.4	0.0	0.0	0.0	0.0	2.5
		<i>average</i>	0.9	1.3	6.8	22.3	0.0	21	0.0	0.4	1.4	0.0	0.0	1.3	0.0	0.0	0.0	0.0	44.7
Zeuxippus Ware Subtype	AAG50	<i>stdev</i>	0.2	0.2	0.4	1.1	0.0	1.3	0.0	0.2	0.4	0.0	0.0	0.03	0.0	0.0	0.0	0.0	3.6
		<i>average</i>	0.8	1	7.1	17.9	0.0	20.4	0.0	0.9	1.3	0.2	0.0	1.7	0.0	0.2	0.0	0.0	48.6
Spanish Lustre Ware	AAG68	<i>stdev</i>	0.6	0.7	1.6	4.2	0.0	5.5	0.0	0.04	0.2	0.03	0.0	0.1	0.0	0.0	0.0	0.0	12.4
		<i>average</i>	1.1	1.1	7	44.8	0.0	37.6	1.5	1.1	1.1	0.0	0.0	0.7	0.0	0.0	0.0	0.0	4.2
		<i>stdev</i>	0.4	0.5	0.1	2.2	0.0	2.3	0.1	0.13	0.1	0.0	0.0	0.04	0.0	0.0	0.0	0.0	0.9

Scanning Electron Microscopy results of fresh fractured samples of glazes from the Athenian Agora in Attica (%).

SAMPLES			Na2O	MgO	Al2O3	SiO2	SO3	Cl2O	K2O	CaO	TiO2	Fe2O3
Polychrome Painted Ware/Maiolica	AAG29	<i>average</i>	1.1	6	18.6	52.2	0.9	0.3	2.8	12.8	0.0	5.4
		<i>stdev</i>	0.1	0.7	1.2	3.4	0.0	0.0	0.5	1.3	0.0	1.3
Polychrome Painted Ware/Maiolica	AAG30	<i>average</i>	0.9	4	14.2	46.2	0.0	0.3	2.8	22.04	0.9	8.6
		<i>stdev</i>	0.1	0.1	0.2	0.8	0.0	0.1	0.1	0.8	0.1	0.3
Polychrome Painted Ware/Maiolica	AAG31	<i>average</i>	0.7	4.3	13.8	46.5	1.4	0.4	2.4	20.5	0.9	9.1
		<i>stdev</i>	0.2	0.1	0.2	0.7	0.6	0.1	0.4	0.3	0.04	0.3
Polychrome Painted Ware/Maiolica	AAG32	<i>average</i>	0.7	4.2	16.7	49.8	0.0	0.0	3.7	13.4	1.2	10.3
		<i>stdev</i>	0.1	0.1	0.3	0.9	0.0	0.0	0.1	0.4	0.1	1.3
Polychrome Painted Ware/Maiolica	AAG66	<i>average</i>	0.4	4.3	15.9	48.3	0.5	0.4	3.7	16.3	1	9.2
		<i>stdev</i>	0.04	0.1	0.2	0.3	0.2	0.1	0.2	0.5	0.04	0.3
Polychrome Painted Ware/Maiolica	AAG67	<i>average</i>	1	4.8	15.8	46	0.0	0.0	3.1	19.4	1	8.9
		<i>stdev</i>	0.1	0.4	0.5	0.6	0.0	0.0	0.1	0.9	0.2	0.4
Polychrome Sgraffito Ware	AAG60	<i>average</i>	0.6	4.6	16.8	48.6	0.4	0.9	3.1	13.6	1.2	10.2
		<i>stdev</i>	0.1	0.1	0.1	0.2	0.2	0.3	0.04	0.8	0.04	0.4
Polychrome Sgraffito Ware	AAG62	<i>average</i>	0.6	4.2	16.2	47.8	0.0	0.0	3.5	17.03	1.3	9.4
		<i>stdev</i>	0.1	0.3	0.5	2.1	0.0	0.0	0.2	1.5	0.2	1
Incised Sgraffito Ware	AGBZY841	<i>average</i>	0.7	3.7	17.3	54.7	0.0	0.0	4.1	9.9	1.03	8.7
		<i>stdev</i>	0.1	0.2	0.2	1	0.0	0.0	0.1	0.8	0.1	1.7
Incised Sgraffito Ware	AGBZY846	<i>average</i>	1.5	2.6	18.8	56.6	0.0	0.0	3.7	7	0.9	8.9
		<i>stdev</i>	0.2	0.3	0.6	1.4	0.0	0.0	0.01	0.9	0.1	0.6
Green and Brown Painted Ware	AAG61	<i>average</i>	1.7	7.3	20.9	57	0.0	0.0	2.1	7.6	0.0	3.4
		<i>stdev</i>	0.2	0.4	0.3	0.1	0.0	0.0	0.3	0.5	0	0.3
Green and Brown Painted Ware	AGBZY853	<i>average</i>	0.7	4.4	17.1	54.5	0.0	0.0	4.2	9.9	1.1	8.3
		<i>stdev</i>	0.1	0.1	0.3	0.4	0.0	0.0	0.2	0.1	0.1	0.6
Green and Brown Painted Ware	AAG69	<i>average</i>	0.6	4.2	17.7	53.8	0.0	0.0	4	10.7	1	8
		<i>stdev</i>	0.1	0.2	0.1	0.3	0.0	0.0	0.1	0.3	0.2	0.4

Scanning Electron Microscopy results of fresh fractured fabrics from the Athenian Agora in Attica (%).

SAMPLES			Na2O	MgO	Al2O3	SiO2	SO3	Cl2O	K2O	CaO	TiO2	Fe2O3
Monochrome Glazed Ware	AAG20	<i>average</i>	0.2	4	14.5	51.1	0.7	0.4	3.3	22.2	1.1	2.7
		<i>stdev</i>	0.0	0.1	0.4	3.4	0.2	0.04	0.3	1.4	0.1	0.0
Monochrome Glazed Ware	AAG22	<i>average</i>	0.4	5	15.9	53.7	0.7	0.0	3.7	9.4	1.2	10.2
		<i>stdev</i>	0.1	0.2	0.2	0.5	0.1	0.0	0.1	0.4	0.1	0.7
Monochrome Glazed Ware	AAG26	<i>average</i>	0.0	5	14.4	44.8	0.0	0.5	3	17.6	1.1	13.2
		<i>stdev</i>	0.1	0.1	0.6	2.3	0.0	0.01	0.1	0.1	0.2	2.9
Monochrome Glazed Ware	AAG33	<i>average</i>	0.3	4.2	16.1	50.2	0.5	0.6	3.6	14.8	1	8.9
		<i>stdev</i>	0.1	0.2	0.3	1.04	0.2	0.03	0.03	1.6	0.1	0.3
Monochrome Glazed Ware	AAG36	<i>average</i>	0.6	4.5	15.9	45.6	0.6	0.1	2	19.3	1	10.4
		<i>stdev</i>	0.1	0.3	0.2	0.1	0.1	0.0	0.1	0.2	0.1	0.4
Monochrome Glazed Ware	AAG53	<i>average</i>	0.6	4.5	17.7	56.1	0.0	0.0	3.8	10.1	0.9	6.2
		<i>stdev</i>	0.1	0.3	0.5	1	0.0	0.0	0.1	1.4	0.02	0.4
Monochrome Glazed Ware	AAG54	<i>average</i>	0.9	5.4	17.7	53.8	0.0	0.6	4.1	6	1.2	10.5
		<i>stdev</i>	0.1	0.1	0.5	1.3	0.0	0.2	0.1	0.3	0.1	1.5
Monochrome Glazed Ware	AAG55	<i>average</i>	1	5.8	17	51.4	0.4	0.6	3.5	11.5	0.8	8.2
		<i>stdev</i>	0.1	0.2	0.7	1.5	0.0	0.1	0.3	1.8	0.1	0.8
Monochrome Glazed Ware	AAG71	<i>average</i>	1.1	6.7	14.9	51.7	0.6	0.0	2.5	12.4	0.9	9.2
		<i>stdev</i>	0.2	0.1	0.4	1.3	0.4	0.0	0.2	0.6	0.1	0.9
Zeuxippus Ware Subtype	AAG43	<i>average</i>	1.1	2.3	19	55.6	0.0	0.1	4.1	7.5	1	9.2
		<i>stdev</i>	0.1	0.1	0.6	2	0.0	0.0	0.1	2.6	0.04	0.9
Zeuxippus Ware Subtype	AAG47	<i>average</i>	0.4	3.1	15	49.7	0.0	0.0	3.1	16.8	1	10.9
		<i>stdev</i>	0.3	0.3	1.3	2.8	0.0	0.0	0.3	6.02	0.2	2.2
Zeuxippus Ware Subtype	AAG50	<i>average</i>	0.6	3.1	17.1	54.6	0.8	0.0	3.3	10.1	0.8	9.5
		<i>stdev</i>	0.2	0.1	0.5	1.4	0.3	0.0	0.03	1.2	0.1	0.8
Slip-Painted Ware	AAG59	<i>average</i>	0.7	5.6	18.7	53.4	0.3	0.0	4.3	5.3	1.1	11
		<i>stdev</i>	0.1	0.03	0.3	0.4	0.3	0.0	0.1	0.3	0.04	0.3
Spanish Lustre Ware	AAG68	<i>average</i>	0.8	5.9	19.9	53.3	0.3	0.5	2.6	13.6	0.0	3.5
		<i>stdev</i>	0.2	0.2	0.7	1.9	0.3	0.04	0.3	2.3	0.0	0.1
Maiolica	AAG70	<i>average</i>	0.9	3.8	14.3	47.2	0.3	0.0	2.3	22.1	0.8	8.6
		<i>stdev</i>	0.1	0.2	0.5	1.2	0.3	0.0	0.1	1.1	0.1	0.7

Scanning Electron Microscopy results of fresh fractured fabrics from the Athenian Agora in Attica (%).

SAMPLES		Na2O	MgO	Al2O3	SiO2	P2O5	SO3	Cl2O	K2O	CaO	TiO2	Cr2O3	MnO	Fe2O3	CoO	NiO	CuO	ZnO	SnO2	PbO
Polychrome Sgraffito Ware	MYT217	1.01	1.4	3.8	20.7	0.7	20.5	2.2	0.6	1.02	0.0	0.0	0.0	0.9	0.0	0.0	0.0	0.0	0.0	47.2
		0.3	0.2	0.7	4.4	0.6	1.7	0.5	0.1	0.1	0.0	0.0	0.0	0.2	0.0	0.0	0.0	0.0	0.0	7.1
Polychrome Marbled Ware	MYT197	1.2	1.6	3.9	29.9	0.0	18.3	1.5	1.1	1.4	0.2	0.0	0.0	1.4	0.0	0.0	0.0	0.0	0.0	39.6
		0.1	0.18	0.5	0.5	0.0	0.1	0.2	0.1	0.3	0.2	0.0	0.0	0.1	0.0	0.0	0.0	0.0	0.0	0.7
Polychrome Marbled Ware	MYT211	0.03	0.1	5.4	31.9	0.0	2.1	3.1	0.1	0.1	0.02	0.0	0.0	0.3	0.0	0.0	0.0	0.0	0.0	56.8
		0.03	0.03	0.1	0.3	0.0	0.2	0.1	0.03	0.1	0.03	0.0	0.0	0.1	0.0	0.0	0.0	0.0	0.0	0.6
Polychrome Painted Ware	MYT228	2.6	0.9	1.6	34.2	0.1	18.3	2.1	0.6	1.4	0.0	0.0	0.0	0.8	0.0	0.0	0.0	0.0	0.0	37.4
		0.4	0.6	0.4	1.4	0.1	0.2	0.2	0.1	0.3	0.0	0.0	0.0	0.1	0.0	0.0	0.0	0.0	0.0	1.6
Painted Ware	MYT191	0.0	0.9	4.5	23.4	0.0	19.6	5.3	0.8	2.5	0.8	0.0	0.0	3.6	0.0	0.0	0.0	0.0	0.0	38.7
		0.0	0.1	0.4	0.6	0.0	0.4	0.8	0.1	0.5	0.01	0.0	0.0	0.4	0.0	0.0	0.0	0.0	0.0	0.6
Monochrome Glazed Ware	MYT199	0.3	1.1	4.8	19.4	0.0	16	0.1	0.6	0.7	0.0	0.0	0.0	3.7	0.0	0.0	3.1	0.0	0.0	50.3
		0.3	0.2	1.2	6.3	0.0	2.9	0.1	0.1	0.3	0.0	0.0	0.0	0.2	0.0	0.0	0.1	0.0	0.0	10.4
Roulette/Veneto Ware	MYT178	0.0	0.0	3.1	18.7	0.0	23	2.7	0.0	0.9	0.0	0.0	0.0	1.1	0.0	0.0	2	0.0	0.0	48.5
		0.0	0.0	0.6	0.3	0.0	0.3	0.1	0.0	0.3	0.0	0.0	0.0	0.01	0.0	0.0	0.2	0.0	0.0	0.1
Overfired Stoneware	MYT202	0.2	1.7	10	35.1	0.0	0.0	1.2	0.7	29.9	1.7	0.0	0.0	19.6	0.0	0.0	0.0	0.0	0.0	0.0
		0.1	1.6	1	4.1	0.0	0.0	0.3	0.1	5.8	0.3	0.0	0.0	0.9	0.0	0.0	0.0	0.0	0.0	0.0
Kütahya Ware	MYT179	6.1	0.5	1.8	53.6	8.3	0.0	2.5	1.6	2.8	0.0	0.0	0.0	0.0	0.0	0.0	0.0	0.0	0.0	22.8
		1.6	0.7	0.3	2.7	0.5	0.0	0.7	0.2	0.3	0.0	0.0	0.0	0.0	0.0	0.0	0.0	0.0	0.0	3.1
Kütahya Ware	MYT181	4.2	0.9	2	45.2	0.0	8.3	2.1	1.7	4.5	0.0	0.0	0.0	1.2	0.0	0.0	0.0	0.0	0.0	29.8
		0.0	0.0	0.0	0.0	0.0	0.0	0.0	0.0	0.0	0.0	0.0	0.0	0.0	0.0	0.0	0.0	0.0	0.0	0.0
Kütahya Ware	MYT184	4	0.5	1.2	30.3	7.9	0.0	2.1	0.9	2.2	0.0	0.0	0.0	0.0	0.0	0.0	0.0	0.0	0.0	50.9
		2.5	0.2	0.8	17.7	4.9	0.0	0.2	0.4	0.6	0.0	0.0	0.0	0.0	0.0	0.0	0.0	0.0	0.0	27
Kütahya Ware	MYT183	2.1	0.0	15.3	70.2	0.0	0.0	1.5	2.6	7.3	0.0	0.0	0.0	1	0.0	0.0	0.0	0.0	0.0	0.0
		0.2	0.0	1.1	2	0.0	0.0	0.2	0.2	0.3	0.0	0.0	0.0	0.03	0.0	0.0	0.0	0.0	0.0	0.0
Iznik Ware	MYT168	0.9	0.6	0.4	45.3	0.0	11.5	2.6	0	2	0.0	0.0	0.0	0.8	0.0	0.0	0.0	0.0	2.3	33.6
		0.4	0.04	0.7	5.3	0.0	3	0.2	0	0.8	0.0	0.0	0.0	0.3	0.0	0.0	0.0	0.0	2	8.8
Iznik Ware	MYT214	3.1	0.8	1.5	47.9	0.0	12.1	2.4	0.9	1.7	0.0	0.0	0.0	0.8	0.0	0.0	0.0	0.0	0.0	28.9
		2.1	0.4	0.2	3.7	0.0	1.2	0.5	0.1	0.3	0.0	0.0	0.0	0.1	0.0	0.0	0.0	0.0	0.0	3.8
Miletus Ware	MYT167	2.1	0.8	3.3	46.3	0.0	10.9	4.6	0.8	2.6	0.4	0.0	0.0	2.9	0.6	0.0	0.7	0.0	0.0	24.1
		2.4	0.2	0.3	5.1	0.0	0.04	0.2	0.3	0.2	0.2	0.0	0.0	0.1	0.2	0.0	0.2	0.0	0.0	2.3
Porcelain	MYT186	2	0.4	14.2	72	0.0	0.0	0.0	3.2	6.5	0.3	0.0	0.0	1.4	0.0	0.0	0.0	0.0	0.0	0.0
		0.04	0.01	0.04	1	0.0	0.0	0.0	0.3	0.4	0.1	0.0	0.0	0.1	0.0	0.0	0.0	0.0	0.0	0.0

Scanning Electron Microscopy results of fresh fractured samples of glazes from the Castle of Mytilene in Lesvos (%).

SAMPLES			Na2O	MgO	Al2O3	SiO2	P2O5	SO3	Cl2O	K2O	CaO	TiO2	MnO	Fe2O3	PbO
Polychrome Sgraffito Ware	MYT209	<i>average</i>	0.9	3.5	15.2	54.1	0.0	1.4	1.6	3.1	6	1.4	0.0	12.8	0.0
		<i>stdev</i>	0.3	0.6	0.1	1.4	0.0	0.4	0.6	0.1	0.5	0.5	0.0	1.7	0.0
Polychrome Sgraffito Ware	MYT217	<i>average</i>	0.6	2.8	12.5	45.4	1	0.7	1.7	2.5	23.5	0.8	0.5	7.1	0.0
		<i>stdev</i>	0.04	0.03	0.8	2.7	0.2	0.1	0.6	0.01	3.1	0.1	0.2	0.5	0.0
Polychrome Sgraffito Ware	MYT229	<i>average</i>	0.0	2.4	10.3	31.4	1.7	2.9	3.1	2.3	41.2	0.0	0.0	4.6	0.0
		<i>stdev</i>	0.0	0.3	2.1	5.7	0.8	0.3	0.2	0.6	8.1	0.0	0.0	1.1	0.0
Polychrome Sgraffito Ware	MYT194	<i>average</i>	2.1	2.1	16.9	61.6	0.0	0.0	1.7	3.3	4.7	0.3	0.0	7.4	0.0
		<i>stdev</i>	1.5	0.5	1.4	2.9	0.0	0.0	0.5	0.6	0.4	0.5	0.0	1.9	0.0
Polychrome Marbled Ware	MYT211	<i>average</i>	0.5	1.5	11.2	50.2	1.4	1.1	1.2	3.9	12.7	1.6	0.0	15.1	0.0
		<i>stdev</i>	0.04	0.04	0.3	0.8	0.1	0.1	0.1	0.2	0.3	0.1	0.0	0.4	0.0
Polychrome Marbled Ware	MYT197	<i>average</i>	0.9	3.5	15.9	50.2	1.6	1.1	2.5	3.1	11.9	0.9	0.0	8.4	0.0
		<i>stdev</i>	0.03	0.1	0.5	0.8	0.1	0.2	0.2	0.1	1	0.1	0.0	0.5	0.0
Polychrome Marbled Ware	MYT208	<i>average</i>	0.9	2.7	13.4	55	1.5	0.9	1.1	3.04	11.1	1.1	0.0	9.3	0.0
		<i>stdev</i>	0.2	0.2	0.6	0.8	0.2	0.1	0.2	0.04	0.8	0.1	0.0	0.6	0.0
Polychrome Painted Ware	MYT215	<i>average</i>	1.8	5.2	5.1	71.1	0.0	1.6	1.04	1.3	8.7	0.5	0.0	4	0.0
		<i>stdev</i>	0.2	0.5	1.1	2.1	0.0	0.2	0.4	0.2	0.5	0.1	0.0	1.1	0.0
Polychrome Painted Ware	MYT228	<i>average</i>	2.1	1.4	4.5	79.9	0.0	1.8	0.9	1	3.3	0.0	0.0	3.5	1.7
		<i>stdev</i>	0.1	0.02	0.3	2.6	0.0	0.2	0.1	0.1	0.3	0.0	0.0	0.1	2.9
Painted Ware	MYT187	<i>average</i>	0.7	2.8	14.9	43.8	1.5	0.8	2.3	2	17.9	1.4	0.0	11.9	0.0
		<i>stdev</i>	0.04	0.2	1.1	1.2	0.1	0.3	0.4	0.1	0.1	0.1	0.0	0.5	0.0
Painted Ware	MYT191	<i>average</i>	0.3	2.2	17.2	53.5	0.0	0.0	2.1	4.5	2	1.5	0.0	16.7	0.0
		<i>stdev</i>	0.2	0.2	0.3	0.6	0.0	0.0	0.2	0.1	0.3	0.1	0.0	0.5	0.0
Monochrome Glazed Ware	MYT199	<i>average</i>	1.3	3.7	14.8	29.8	3.7	0.0	0.0	0.0	36.6	0.0	0.0	10.1	0.0
		<i>stdev</i>	0.6	0.03	0.8	0.4	1.2	0.0	0.0	0.0	0.9	0.0	0.0	0.3	0.0
Monochrome Glazed Ware	MYT200	<i>average</i>	0.1	0.9	19.2	48.3	0.0	0.0	0.0	4.7	1.5	2	0.0	23.3	0.0
		<i>stdev</i>	0.0	0.1	0.6	1.2	0.0	0.0	0.0	0.2	0.1	0.03	0.0	1.7	0.0
Monochrome Glazed Ware	MYT201	<i>average</i>	0.0	2.1	6.5	84.3	0.0	0.1	0.0	0.9	2.5	0.0	0.0	3.6	0.0
		<i>stdev</i>	0.0	0.5	1.2	6	0.0	0.2	0.0	0.2	3.3	0.0	0.0	1.2	0.0
Monochrome Glazed Ware	MYT206	<i>average</i>	1.2	4.6	18.8	46	12.9	0.9	0.0	2.7	3.8	0.7	0.0	12.9	0.0
		<i>stdev</i>	0.2	0.5	2.3	5.5	0.2	0.5	0.0	0.5	1.4	0.2	0.0	0.4	0.0

Scanning Electron Microscopy results of fresh fractured fabrics from the Castle of Mytilene in Lesvos (%).

SAMPLES		Na2O	MgO	Al2O3	SiO2	P2O5	SO3	Cl2O	K2O	CaO	TiO2	MnO	Fe2O3	PbO	
Glazed White Ware IV	MYT203	<i>average</i>	0.2	1.8	8.3	42.8	2.3	2.1	1.9	3.3	25.2	1.04	0.0	11.2	0.0
		<i>stdev</i>	0.1	0.1	1	2.9	0.4	0.4	0.2	0.4	4.6	0.3	0.0	0.9	0.0
Kütahya Ware	MYT169	<i>average</i>	1.3	1.6	7.6	52.8	0.0	4	4.5	1.8	9.5	0.6	0.0	4.1	12.6
		<i>stdev</i>	0.1	0.1	0.2	0.4	0.0	0.3	0.3	0.11	0.4	0.1	0.0	0.2	1.1
Kütahya Ware	MYT179	<i>average</i>	1.2	4.3	3.3	74.2	1.1	0.9	2.3	0.8	9.8	0.0	0.0	2.2	0.0
		<i>stdev</i>	0.1	0.1	0.2	1	0.1	0.2	0.3	0.1	0.6	0.0	0.0	0.1	0.0
Kütahya Ware	MYT181	<i>average</i>	1.2	1.2	5.1	76.9	0.5	2.1	3.5	1.3	5.4	0.0	0.0	2.9	0.0
		<i>stdev</i>	0.1	0.1	0.3	1.8	0.0	0.1	0.5	0.1	0.5	0.0	0.0	0.3	0.0
Kütahya Ware	MYT183	<i>average</i>	1.9	0.3	23.9	65.7	0.0	0.0	1.5	3.3	2	0.0	0.0	1.4	0.0
		<i>stdev</i>	0.1	0.03	0.2	0.3	0.0	0.0	0.1	0.2	0.1	0.0	0.0	0.2	0.0
Kütahya Ware	MYT184	<i>average</i>	1	1.7	7.9	76.5	0.0	1.7	2.6	2.1	2.5	0.0	0.0	4	0.0
		<i>stdev</i>	0.1	0.4	1.6	3.1	0.0	0.1	0.5	0.2	0.2	0.0	0.0	0.7	0.0
Kütahya Ware	MYT188	<i>average</i>	0.7	1.8	9.4	58.6	2.3	1.9	4.6	2.2	14	0.4	0.0	4.2	0.0
		<i>stdev</i>	0.03	0.2	0.8	0.8	0.1	0.1	0.2	0.1	0.2	0.1	0.0	0.1	0.0
Kütahya Ware	MYT195	<i>average</i>	2.2	1.3	2.7	89.8	0.0	0.0	0.8	0.7	1.3	0.0	0.0	1.2	0.0
		<i>stdev</i>	0.2	0.1	0.3	0.5	0.0	0.0	0.1	0.04	0.04	0.0	0.0	0.1	0.0
Miletus Ware	MYT167	<i>average</i>	0.0	2.5	13.9	51.8	2.1	1.8	1.9	3	13.4	0.7	0.0	8.8	0.0
		<i>stdev</i>	0.0	0.3	0.4	3.2	0.9	0.3	0.1	0.2	3.2	0.6	0.0	0.7	0.0
Miletus Ware	MYT204	<i>average</i>	0.4	2.1	12.3	44.7	0.0	0.0	0.6	4.7	9.1	1.6	0.0	24.5	0.0
		<i>stdev</i>	0.2	0.2	0.9	0.8	0.0	0.0	0.1	0.1	0.3	0.2	0.0	0.2	0.0
Miletus Ware	MYT226	<i>average</i>	0.4	2.5	12.8	44.3	0.0	0.0	0.7	4.1	10.6	1.6	0.0	23.2	0.0
		<i>stdev</i>	0.1	0.2	0.3	3.3	0.0	0.0	0.1	0.1	1	0.2	0.0	2.2	0.0
Iznik Ware	MYT168	<i>average</i>	1.8	1.6	3.7	80.4	0.0	2.2	2.3	1.1	4.1	0.0	0.0	2.8	0.0
		<i>stdev</i>	0.1	0.2	0.7	1.9	0.0	0.3	0.1	0.2	0.4	0.0	0.0	0.7	0.0
Iznik Ware	MYT214	<i>average</i>	2.3	1.5	3.8	82.6	0.0	1.7	1.5	1.02	3.3	0.0	0.0	2.3	0.0
		<i>stdev</i>	0.2	0.1	0.3	0.6	0.0	0.3	0.5	0.1	0.1	0.0	0.0	0.2	0.0
Roulette/Veneto Ware	MYT178	<i>average</i>	0.0	2.5	20.8	58.1	0.0	0.0	0.0	4.3	0.6	1.5	0.0	12.2	0.0
		<i>stdev</i>	0.0	0.03	0.2	0.4	0.0	0.0	0.0	0.1	0.1	0.2	0.0	0.3	0.0
Porcelain	MYT180	<i>average</i>	0.5	0.0	15.9	48.9	0.0	0.0	7.6	4.9	10.1	0.0	0.0	12.1	0.0
		<i>stdev</i>	0.2	0.0	2.2	6.2	0.0	0.0	2.4	0.2	2.7	0.0	0.0	3.7	0.0
Porcelain	MYT185	<i>average</i>	0.9	0.0	23.8	66.2	0.0	0.0	0.0	4.7	1.8	0.0	0.0	2.6	0.0
		<i>stdev</i>	0.04	0.0	0.1	0.1	0.0	0.0	0.0	0.1	0.1	0.0	0.0	0.1	0.0
Porcelain	MYT186	<i>average</i>	1.7	0.0	21.7	70.7	0.0	0.0	0.0	3.4	0.9	0.0	0.0	1.5	0.0
		<i>stdev</i>	0.1	0.0	0.2	0.3	0.0	0.0	0.0	0.2	0.1	0.0	0.0	0.2	0.0
Porcelain	MYT221	<i>average</i>	7.5	2.2	11.4	74.6	0.0	0.0	0.0	1.4	0.8	0.0	0.0	2.1	0.0
		<i>stdev</i>	0.5	0.2	0.14	0.5	0.0	0.0	0.0	0.1	0.1	0.0	0.0	0.1	0.0
Porcelain	MYT222	<i>average</i>	1.4	0.0	24.5	68.6	0.0	0.0	0.0	3.5	0.7	0.0	0.0	1.1	0.0
		<i>stdev</i>	0.1	0.0	0.2	0.04	0.0	0.0	0.0	0.1	0.04	0.0	0.0	0.1	0.0
Porcelain	MYT223	<i>average</i>	0.5	0.0	30	65.8	0.0	0.0	0.0	3.7	0.0	0.0	0.0	0.0	0.0
		<i>stdev</i>	0.1	0.0	0.6	0.8	0.0	0.0	0.0	0.3	0.0	0.0	0.0	0.0	0.0
Overfired Stoneware	MYT202	<i>average</i>	1.4	1.5	12.9	47.4	0.0	0.0	0.0	4.3	16.6	1.5	0.0	14.5	0.0
		<i>stdev</i>	0.2	0.2	1.2	1.1	0.0	0.0	0.0	0.3	0.7	0.3	0.0	1.7	0.0

Scanning Electron Microscopy results of fresh fractured fabrics from the Castle of Mytilene in Lesvos (%).

APPENDIX X INFORMATION ABOUT THE SAMPLES UNDER-STUDY AND THEIR TYPE OF ANALYSIS

(The pottery type, period and provenance are provided by J.Vroom)

SAMPLE CODE	POTTERY TYPE	PERIOD	PROVENANCE	OM	pXRF	WDXRF	PETROGRAHY	XRD	SEM FRESH FRACT.SAMPLE	SEM RESIGN SAMPLE	RAMAN
CH107	Glazed White Ware II	Middle Byzantine	Constantinople (Istanbul)	√	√	√		√	√		
MYT203	Glazed White Ware IV	Late Byzantine/Frankish	Constantinople (Istanbul)	√	√	√		√	√		
CH108	Polychrome White Ware	Middle Byzantine	Constantinople (Istanbul)	√	√			√	√		
CH154	Maiolica	Turkish/Venetian	Northern Italy	√	√	√		√	√		√
AAG70	Maiolica	Turkish/Venetian	Italy	√	√	√	√	√	√		√
MYT227	Maiolica	Turkish/Venetian	Montelupo, central Italy	√	√	√		√			√
MYT236	Maiolica	Turkish/Venetian	Montelupo, central Italy	√	√	√					√
MYT223	Porcelain	Turkish/Venetian	China	√	√				√		√
MYT180	Porcelain	Turkish/Venetian	China	√	√				√		√
MYT185	Porcelain	Turkish/Venetian	China	√	√				√		√
MYT186	Porcelain	Turkish/Venetian	China	√	√				√		√
MYT221	Porcelain	Turkish/Venetian	China	√	√				√		√
MYT222	Porcelain	Turkish/Venetian	China	√	√				√		√
MYT168	Iznik Ware	Turkish/Venetian	Western Turkey	√	√	√		√	√		√
MYT170	Iznik Ware	Turkish/Venetian	Western Turkey	√	√	√		√			√
MYT214	Iznik Ware	Turkish/Venetian	Western Turkey	√	√	√			√		√
CH106	Glazed Frit Ware	Islamic	Syria or Egypt	√	√	√			√		√
CH109	Glazed Frit Ware	Islamic	Syria	√	√			√	√		
MYT182	Glazed Frit Ware	Turkish/Venetian	Western Asia or Egypt	√	√	√		√			√
CH147	Frit Ware	Islamic	Egypt	√	√			√	√		
CH110	Lustre Ware	Islamic	Egypt	√	√			√	√		√
MYT215	Polychrome Painted Ware	Turkish/Venetian	Unknown region	√	√				√		√
MYT228	Polychrome Painted Ware	Turkish/Venetian	Western Asia or Egypt	√	√	√	√	√	√		
MYT166	Polychrome Painted Ware	Turkish/Venetian	Unknown region	√	√						

Information about the under-study samples and their type of analysis from Chalcis in Euboea, the Athenian Agora in Attica and the Castle of Mytilene in Lesbos.

SAMPLE CODE	POTTERY TYPE	PERIOD	PROVENANCE	OM	pXRF	WDXRF	PETROGRAHY	XRD	SEM FRESH FRACT.SAMPLE	SEM RESIGN SAMPLE	RAMAN
CH87	Plain Glazed Ware	Early Byzantine to Middle Byzantine	Chalcis local	√	√						
CH88	Plain Glazed Ware	Early Byzantine to Middle Byzantine	Chalcis local	√	√			√	√	√	
CH125	Plain Glazed Ware	Middle Byzantine Or Early Modern	Unknown region	√	√			√	√		
AAG64	Plain Glazed Ware	Middle Byzantine	Athens local	√	√						
AAG65	Plain Glazed Ware	Middle Byzantine	Athens local	√	√						
CH134	Unglazed Plain Ware	Middle Byzantine to Late Byzantine/Frankish	Chalcis local	√	√				√		
CH155	A8A Amphora	Middle Byzantine	Chalcis local	√	√	√	√	√	√		
CH156	A8A Amphora	Middle Byzantine	Chalcis local	√	√				√		
CH157	A8A Amphora	Middle Byzantine	Chalcis local	√	√				√		
CH158	Günsenin 3 Amphora	Middle Byzantine/Frankish	Chalcis local	√	√			√	√		
CH159	Günsenin 3 Amphora	Middle Byzantine/Frankish	Chalcis local	√	√			√	√		
CH160	Günsenin 3 Amphora	Middle Byzantine/Frankish	Chalcis local	√	√	√	√	√	√		
CH161	Günsenin 2 Amphora	Middle Byzantine	Chalcis local	√	√			√	√		
CH162	Günsenin 2 Amphora	Middle Byzantine	Chalcis local	√	√	√	√	√	√		
CH163	Günsenin 2 Amphora	Middle Byzantine	Chalcis local	√	√			√	√		
CH86	Slip-Painted Ware	Middle Byzantine	Chalcis local	√	√						
CH94	Slip-Painted Ware	Middle Byzantine	Chalcis local	√	√	√		√	√	√	
CH121	Slip-Painted Ware	Middle Byzantine to Late Byzantine/Frankish	Chalcis local	√	√	√		√	√		
CH131	Slip-painted Ware	Middle Byzantine	Chalcis local	√	√						
CH138	Slip-Painted Ware	Middle Byzantine	Chalcis local	√	√			√	√		
AAG58	Slip-Painted Ware	Late Byzantine/Frankish	Athens local	√	√						
AAG59	Slip-Painted Ware	Late Byzantine/Frankish	Athens local	√	√			√	√		

Information about the under-study samples and their type of analysis from Chalcis in Euboea, the Athenian Agora in Attica and the Castle of Mytilene in Lesvos.

SAMPLE CODE	POTTERY TYPE	PERIOD	PROVENANCE	OM	pXRF	WDXRF	PETROGRAHY	XRD	SEM FRESH FRACT.SAMPLE	SEM RESIGN SAMPLE	RAMAN
CH95	Green and Brown Painted Ware	Middle Byzantine	Chalcis local	√	√	√					
AGBZY852	Green and Brown Painted Ware	Middle Byzantine	Chalcis or Athens local	√	√						
CH136	Brown Painted Ware	Middle Byzantine Or Early Modern	Chalcis local	√	√	√					
AGBZY853	Green and Brown Painted Ware	Middle Byzantine	Athens local	√	√	√		√	√		√
AGBZY854	Green and Brown Painted Ware	Middle Byzantine	Chalcis or Athens local	√	√				√		√
AGBZY847	Green and Brown Painted Ware	Middle Byzantine	Chalcis or Athens local	√	√				√		√
AAG61	Green and Brown Painted Ware	Middle Byzantine	Chalcis or Athens local	√	√			√	√		
AAG69	Green and Brown Painted Ware-variant	Middle Byzantine	Athens local	√	√	√		√	√		√
CH127	Fine Sgraffito Ware	Middle Byzantine	Chalcis local	√	√	√					
AGBZY842	Fine Sgraffito Ware	Middle Byzantine	Athens local	√	√	√					
AAG57	Fine Sgraffito Ware	Late Byzantine/Frankish	Chalcis or Athens local	√	√						
CH98	Painted Fine Sgraffito Ware	Middle Byzantine	Chalcis local	√	√	√					
CH97	Painted Fine Sgraffito Ware	Middle Byzantine	Chalcis local	√	√						

Information about the under-study samples and their type of analysis from Chalcis in Euboea, the Athenian Agora in Attica and the Castle of Mytilene in Lesbos.

SAMPLE CODE	POTTERY TYPE	PERIOD	PROVENANCE	OM	pXRF	WDXRF	PETROGRAHY	XRD	SEM FRESH FRACT.SAMPLE	SEM RESIGN SAMPLE	RAMAN
CH83	Incised Sgraffito Ware	Middle Byzantine to Late Byzantine/Frankish	Chalcis local	√	√			√			
CH90	Incised Sgraffito Ware	Middle Byzantine to Late Byzantine/Frankish	Chalcis local	√	√						
CH91	Incised Sgraffito Ware	Middle Byzantine to Late Byzantine/Frankish	Chalcis local	√	√						
CH111	Incised Sgraffito Ware	Middle Byzantine to Late Byzantine/Frankish	Chalcis local	√	√						
CH113	Incised Sgraffito Ware	Middle Byzantine to Late Byzantine/Frankish	Chalcis local	√	√	√	√	√	√		
CH114	Incised Sgraffito Ware	Middle Byzantine	Chalcis local	√	√	√	√		√		
CH117	Incised Sgraffito Ware	Middle Byzantine to Late Byzantine/Frankish	Chalcis local	√	√						
CH129	Incised Sgraffito Ware	Middle Byzantine to Late Byzantine/Frankish	Chalcis local	√	√						
CH133	Incised Sgraffito Ware	Middle Byzantine to Late Byzantine/Frankish	Chalcis local	√	√	√	√	√	√		
CH139	Incised Sgraffito Ware	Middle Byzantine to Late Byzantine/Frankish	Chalcis local	√	√						
CH149	Incised Sgraffito Ware	Middle Byzantine to Late Byzantine/Frankish	Chalcis local	√	√						
CH150	Incised Sgraffito Ware	Middle Byzantine to Late Byzantine/Frankish	Chalcis local	√	√			√	√		
CH153	Incised Sgraffito Ware	Middle Byzantine to Late Byzantine/Frankish	Chalcis local	√	√			√			
AGBZY841	Incised Sgraffito Ware	Middle Byzantine/Frankish	Athens local	√	√	√		√	√		
AGBZY843	Incised Sgraffito Ware	Middle Byzantine/Frankish	Chalcis or Athens local	√	√						
AGBZY844	Incised Sgraffito Ware	Middle Byzantine/Frankish	Chalcis or Athens local	√	√						
AGBZY846	Incised Sgraffito Ware	Middle Byzantine/Frankish	Chalcis local	√	√	√		√	√		
AGBZY849	Incised Sgraffito Ware	Middle Byzantine/Frankish	Chalcis or Athens local	√	√						
MYT237	Unglazed Incised Grey Ware	Turkish/Venetian	Unknown region	√	√						
AAG45	Late Sgraffito Ware	Late Byzantine/Frankish	Athens local	√	√						

Information about the under-study samples and their type of analysis from Chalcis in Euboea, the Athenian Agora in Attica and the Castle of Mytilene in Lesbos.

SAMPLE CODE	POTTERY TYPE	PERIOD	PROVENANCE	OM	pXRF	WDXRF	PETROGRAHY	XRD	SEM FRESH FRACT.SAMPLE	SEM RESIGN SAMPLE	RAMAN
CH84	Champlevé Ware	Middle Byzantine to Late Byzantine/Frankish	Chalcis local	√	√	√	√	√	√	√	
CH92	Champlevé Ware	Middle Byzantine to Late Byzantine/Frankish	Chalcis local	√	√	√	√	√	√	√	
CH112	Champlevé Ware	Late Byzantine/Frankish	Chalcis local	√	√						
CH115	Champlevé Ware	Late Byzantine/Frankish	Chalcis local	√	√						
CH116	Champlevé Ware	Late Byzantine/Frankish	Chalcis local	√	√						
CH118	Champlevé Ware	Late Byzantine/Frankish	Chalcis local	√	√						
CH122	Champlevé Ware	Late Byzantine/Frankish	Chalcis local	√	√						
CH123	Champlevé Ware	Late Byzantine/Frankish	Chalcis local	√	√						
CH124	Champlevé Ware	Middle Byzantine to Late Byzantine/Frankish	Chalcis local	√	√	√	√	√	√		
CH130	Champlevé Ware	Late Byzantine/Frankish	Chalcis local	√	√						
CH132	Champlevé Ware	Late Byzantine/Frankish	Chalcis local	√	√						
CH140	Champlevé Ware	Late Byzantine/Frankish	Chalcis local	√	√						
CH141	Champlevé Ware	Late Byzantine/Frankish	Chalcis local	√	√			√	√	√	√
CH142	Champlevé Ware	Late Byzantine/Frankish	Chalcis local	√	√						
CH143	Champlevé Ware	Late Byzantine/Frankish	Chalcis local	√	√						
CH144	Champlevé Ware	Late Byzantine/Frankish	Chalcis local	√	√						
CH146	Champlevé Ware	Late Byzantine/Frankish	Chalcis local	√	√						
CH148	Champlevé Ware	Late Byzantine/Frankish	Chalcis local	√	√			√	√	√	
CH151	Champlevé Ware	Late Byzantine/Frankish	Chalcis local	√	√			√	√		
CH152	Champlevé Ware	Late Byzantine/Frankish	Chalcis local	√	√			√			

Information about the under-study samples and their type of analysis from Chalcis in Euboea, the Athenian Agora in Attica and the Castle of Mytilene in Lesvos.

SAMPLE CODE	POTTERY TYPE	PERIOD	PROVENANCE	OM	pXRF	WDXRF	PETROGRAHY	XRD	SEM FRESH FRACT.SAMPLE	SEM RESIGN SAMPLE	RAMAN
CH93	Monochrome Glazed Ware	Middle Byzantine	Chalcis local	√	√						
CH96	Monochrome Glazed Ware	Middle Byzantine to Late Byzantine/Frankish	Chalcis local	√	√						
CH119	Monochrome Glazed Ware	Middle Byzantine to Late Byzantine/Frankish	Chalcis local	√	√						
CH120	Monochrome Glazed Ware	Middle Byzantine to Late Byzantine/Frankish	Chalcis local	√	√						
CH126	Monochrome Glazed Ware	Middle Byzantine	Unknown region	√	√				√		
CH128	Monochrome Glazed Ware	Middle Byzantine to Late Byzantine/Frankish	Chalcis local	√	√				√		
CH137	Monochrome Glazed Ware	Middle Byzantine	Chalcis local	√	√				√	√	
AGBZY837	Monochrome Glazed Ware	Turkish/Venetian	Athens local	√	√				√	√	
AGBZY838	Monochrome Glazed Ware	Turkish/Venetian	Athens local	√	√					√	
AGBZY840	Monochrome Glazed Ware	Turkish/Venetian	Athens local	√	√						
AAG19	Monochrome Glazed Ware	Turkish/Venetian	Athens local	√	√						
AAG20	Monochrome Glazed Ware	Turkish/Venetian	Athens local	√	√			√	√		
AAG21	Monochrome Glazed Ware	Turkish/Venetian	Athens local	√	√						
AAG22	Monochrome Glazed Ware	Turkish/Venetian	Athens local	√	√				√		
AAG23	Monochrome Glazed Ware	Turkish/Venetian	Athens local	√	√						
AAG24	Monochrome Glazed Ware	Turkish/Venetian	Athens local	√	√						
AAG25	Monochrome Glazed Ware	Turkish/Venetian	Athens local	√	√						
AAG26	Monochrome Glazed Ware	Turkish/Venetian	Athens local	√	√			√	√		
AAG27	Monochrome Glazed Ware	Turkish/Venetian	Athens local	√	√						
AAG28	Monochrome Glazed Ware	Turkish/Venetian	Athens local	√	√						
AAG33	Monochrome Glazed Ware	Turkish/Venetian	Athens local	√	√				√		
AAG34	Monochrome Glazed Ware	Turkish/Venetian	Athens local	√	√						
AAG35	Monochrome Glazed Ware	Turkish/Venetian	Athens local	√	√						
AAG36	Monochrome Glazed Ware	Turkish/Venetian	Athens local	√	√			√	√		
AAG42	Monochrome Glazed Ware	Late Byzantine/Frankish	Athens local	√	√						
AAG52	Monochrome Glazed Ware	Late Byzantine/Frankish	Athens local	√	√						

Information about the under-study samples and their type of analysis from Chalcis in Euboea, the Athenian Agora in Attica and the Castle of Mytilene in Lesbos.

SAMPLE CODE	POTTERY TYPE	PERIOD	PROVENANCE	OM	pXRF	WDXRF	PETROGRAHY	XRD	SEM FRESH FRACT.SAMPLE	SEM RESIGN SAMPLE	RAMAN
AAG53	Monochrome Glazed Ware	Late Byzantine/Frankish	Athens local	√	√			√	√		
AAG54	Monochrome Glazed Ware	Late Byzantine/Frankish	Athens local	√	√			√	√		
AAG55	Monochrome Glazed Ware	Late Byzantine/Frankish	Athens local	√	√			√	√		
AAG56	Monochrome Glazed Ware	Late Byzantine/Frankish to Turkish/Venetian	Athens local	√	√						
AAG63	Monochrome Glazed Ware	Turkish/Venetian	Athens local	√	√						
AAG71	Monochrome Glazed Ware	Turkish/Venetian	Athens local	√	√			√	√		
MYT172	Monochrome Glazed Ware	Turkish/Venetian	Unknown region	√	√		√				
MYT173	Monochrome Glazed Ware	Turkish/Venetian	Unknown region	√	√						
MYT174	Monochrome Glazed Ware	Turkish/Venetian	Unknown region	√	√						
MYT189	Monochrome Glazed Ware	Turkish/Venetian	Unknown region	√	√						
MYT190	Monochrome Glazed Ware	Turkish/Venetian	Unknown region	√	√						
MYT193	Monochrome Glazed Ware	Turkish/Venetian	Unknown region	√	√						
MYT198	Monochrome Glazed Ware	Turkish/Venetian	Unknown region	√	√						
MYT199	Monochrome Glazed Ware	Turkish/Venetian	Unknown region	√	√		√	√	√		
MYT200	Monochrome Glazed Ware	Turkish/Venetian	Unknown region	√	√				√		√
MYT201	Monochrome Glazed Ware	Turkish/Venetian	Unknown region	√	√				√		√
MYT206	Monochrome Glazed Ware	Turkish/Venetian	Unknown region	√	√		√	√	√		
MYT212	Monochrome Glazed Ware	Turkish/Venetian	Unknown region	√	√						
MYT213	Monochrome Glazed Ware	Turkish/Venetian	Unknown region	√	√			√			
MYT216	Monochrome Glazed Ware	Turkish/Venetian	Unknown region	√	√						
MYT220	Monochrome Glazed Ware	Turkish/Venetian	Unknown region	√	√						
MYT224	Monochrome Glazed Ware	Turkish/Venetian	Unknown region	√	√						
MYT225	Monochrome Glazed Ware	Turkish/Venetian	Unknown region	√	√						
MYT231	Monochrome Glazed Ware	Turkish/Venetian	Unknown region	√	√			√			
MYT232	Monochrome Glazed ware	Late Byzantine/Frankish	Unknown region	√	√						
MYT235	Monochrome Glazed Ware	Turkish/Venetian	Unknown region	√	√						
MYT240	Monochrome Glazed Ware	Turkish/Venetian	Unknown region	√	√						
MYT246	Monochrome Glazed Ware	Turkish/Venetian	Unknown region	√	√						
CH89	Splashed Ware	Late Byzantine/Frankish	Chalcis local	√	√	√		√	√		√
CH145	Splashed Ware	Late Byzantine/Frankish	Chalcis local	√	√			√	√		

Information about the under-study samples and their type of analysis from Chalcis in Euboea, the Athenian Agora in Attica and the Castle of Mytilene in Lesbos.

SAMPLE CODE	POTTERY TYPE	PERIOD	PROVENANCE	OM	pXRF	WDXRF	PETROGRAHY	XRD	SEM FRESH FRACT.SAMPLE	SEM RESIGN SAMPLE	RAMAN
CH99	Zeuxippus Ware	Late Byzantine/Frankish	Western Turkey	√	√	√					
CH101	Zeuxippus Ware	Late Byzantine/Frankish	Western Turkey	√	√	√	√	√	√	√	
CH105	Zeuxippus Ware	Late Byzantine/Frankish	Western Turkey	√	√						
AAG43	Zeuxippus Ware subtype	Late Byzantine/Frankish	Chalcis local	√	√	√	√	√	√		
AAG46	Zeuxippus Ware subtype	Late Byzantine/Frankish	Athens local	√	√						
AAG47	Zeuxippus Ware subtype	Late Byzantine/Frankish	Western Turkey	√	√	√		√	√		
AAG48	Zeuxippus Ware subtype	Late Byzantine/Frankish	Western Turkey	√	√	√					
AAG49	Zeuxippus Ware subtype	Late Byzantine/Frankish	Athens local	√	√						
AAG50	Zeuxippus Ware subtype	Late Byzantine/Frankish	Athens local	√	√		√	√	√		
AAG51	Zeuxippus Ware subtype	Late Byzantine/Frankish	Athens local	√	√						
MYT196	Zeuxippus Ware subtype	Late Byzantine/Frankish	Mytilene local	√	√	√					
MYT233	Zeuxippus Ware subtype	Late Byzantine/Frankish	Western Turkey	√	√	√					
MYT238	Zeuxippus Ware subtype	Late Byzantine/Frankish	Western Turkey	√	√						
MYT177	Monochrome and One Colour Sgraffito Ware	Late Byzantine/Frankish	Constantinople (Istanbul)	√	√	√					
MYT234	Elaborate Incised Ware	Late Byzantine/Frankish	Constantinople (Istanbul)	√	√	√					
CH82	Roulette/Veneto Ware	Late Byzantine/Frankish	Chalcis local	√	√	√		√	√		
CH85	Roulette/Veneto Ware	Late Byzantine/Frankish	Chalcis local	√	√	√			√		
MYT178	Roulette/Veneto Ware	Late Byzantine/Frankish	Western Turkey	√	√	√		√	√		
MYT171	Monochrome Sgraffito Ware	Late Byzantine/Frankish	Unknown region	√	√						

Information about the under-study samples and their type of analysis from Chalcis in Euboea, the Athenian Agora in Attica and the Castle of Mytilene in Lesbos.

SAMPLE CODE	POTTERY TYPE	PERIOD	PROVENANCE	OM	pXRF	WDXRF	PETROGRAHY	XRD	SEM FRESH FRACT.SAMPLE	SEM RESIGN SAMPLE	RAMAN
AAG37	Polychrome Sgraffito Ware	Turkish/Venetian	Athens local	√	√	√	√	√		√	
AAG38	Polychrome Sgraffito Ware	Turkish/Venetian	Athens local	√	√						
AAG39	Polychrome Sgraffito Ware	Turkish/Venetian	Athens local	√	√						
AAG40	Polychrome Sgraffito Ware	Turkish/Venetian	Athens local	√	√						
AAG41	Polychrome Sgraffito Ware	Turkish/Venetian	Athens local	√	√						
AAG60	Polychrome Sgraffito Ware	Late Byzantine/Frankish to Turkish/Venetian	Athens local	√	√	√	√	√	√		
AAG62	Polychrome Sgraffito Ware	Late Byzantine/Frankish to Turkish/Venetian	Chalcis or Athens local	√	√		√	√	√		
AGBZY828	Polychrome Sgraffito Ware	Turkish/Venetian	Athens local	√	√					√	
AGBZY829	Polychrome Sgraffito Ware	Turkish/Venetian	Athens local	√	√			√		√	
AGBZY860	Polychrome Sgraffito Ware	Turkish/Venetian	Athens local	√	√			√		√	
MYT164	Polychrome Sgraffito Ware	Turkish/Venetian	Unknown region	√	√						
MYT175	Polychrome Sgraffito Ware	Turkish/Venetian	Unknown region	√	√						
MYT192	Polychrome Sgraffito Ware	Turkish/Venetian	Unknown region	√	√						
MYT209	Polychrome Sgraffito Ware	Turkish/Venetian	Western Turkey	√	√	√	√	√	√		√
MYT217	Polychrome Sgraffito Ware	Turkish/Venetian	Unknown region	√	√	√	√	√	√		
MYT219	Polychrome Sgraffito Ware	Turkish/Venetian	Unknown region	√	√						
MYT229	Polychrome Sgraffito Ware	Turkish/Venetian	Unknown region	√	√			√	√		
MYT194	Polychrome Sgraffito Ware	Turkish/Venetian	Mytilene local	√	√	√	√	√	√		
MYT167	Miletus Ware	Turkish/Venetian	Western Turkey	√	√	√		√	√		√
MYT204	Miletus Ware	Turkish/Venetian	Western Turkey	√	√	√		√	√		√
MYT226	Miletus Ware	Turkish/Venetian	Western Turkey	√	√	√		√	√		√
CH104	Painted Ware	Turkish/Venetian	Western Turkey	√	√	√					
AAG44	Painted Ware	Late Byzantine/Frankish	Chalcis local	√	√	√					
MYT187	Painted Ware	Turkish/Venetian	Italy	√	√	√		√	√		
MYT191	Painted Ware	Turkish/Venetian	Western Turkey	√	√	√	√	√	√		
MYT205	Painted Ware	Early Modern	Unknown region	√	√						
MYT176	Monochrome Painted Ware	Turkish/Venetian	Mytilene local	√	√	√					
MYT210	Monochrome Painted Ware	Turkish/Venetian	Northern Italy	√	√						
MYT207	Unglazed Painted Ware	Turkish/Venetian	Unknown region	√	√			√			

Information about the under-study samples and their type of analysis from Chalcis in Euboea, the Athenian Agora in Attica and the Castle of Mytilene in Lesbos.

SAMPLE CODE	POTTERY TYPE	PERIOD	PROVENANCE	OM	pXRF	WDXRF	PETROGRAHY	XRD	SEM FRESH FRACT.SAMPLE	SEM RESIGN SAMPLE	RAMAN
AGBZY86 1	Polychrome Painted Ware/Maiolica	Turkish/Venetian	Athens local	√	√				√	√	
AGBZY86 2	Polychrome Painted Ware/Maiolica	Turkish/Venetian	Athens local	√	√				√	√	
AGBZY86 3	Polychrome Painted Ware/Maiolica	Turkish/Venetian	Athens local	√	√				√	√	
AAG29	Polychrome Painted Ware/Maiolica	Turkish/Venetian	Athens local	√	√	√	√	√	√	√	√
AAG30	Polychrome Painted Ware/Maiolica	Turkish/Venetian	Athens local	√	√	√	√	√	√	√	
AAG31	Polychrome Painted Ware/Maiolica	Turkish/Venetian	Athens local	√	√			√	√		
AAG32	Polychrome Painted Ware/Maiolica	Turkish/Venetian	Athens local	√	√			√	√		
AAG66	Polychrome Painted Ware/Maiolica	Turkish/Venetian	Athens local	√	√	√	√	√	√		
AAG67	Polychrome Painted Ware/Maiolica	Turkish/Venetian	Athens local	√	√	√		√	√		
CH102	Polychrome Marbled Ware	Turkish/Venetian	Western Turkey	√	√	√		√	√		
CH103	Polychrome Marbled Ware	Turkish/Venetian	Western Turkey	√	√	√			√		
MYT197	Polychrome Marbled Ware	Turkish/Venetian	Unknown region	√	√		√	√	√		
MYT208	Polychrome Marbled Ware	Turkish/Venetian	Western Turkey	√	√	√	√	√	√	√	
MYT211	Polychrome Marbled Ware	Turkish/Venetian	Western Turkey	√	√	√	√	√	√		
MYT165	Polychrome Marbled Ware	Turkish/Venetian	Unknown region	√	√			√			
AAG68	Spanish Lustre Ware	Turkish/Venetian	Athens local	√	√	√		√	√	√	
MYT179	Kütahya Ware	Turkish/Venetian	Western Turkey	√	√	√		√	√	√	√
MYT181	Kütahya Ware	Turkish/Venetian	Western Turkey	√	√				√	√	
MYT183	Kütahya Ware	Turkish/Venetian	Western Turkey	√	√				√	√	
MYT184	Kütahya Ware	Turkish/Venetian	Western Turkey	√	√	√		√	√	√	
MYT188	Kütahya Ware	Turkish/Venetian	Western Turkey	√	√				√	√	
MYT169	Kütahya Ware	Turkish/Venetian	Western Turkey	√	√				√		
MYT195	Kütahya Ware	Turkish/Venetian	Western Turkey	√	√				√		
MYT218	Kütahya Ware	Turkish/Venetian	Western Turkey	√	√	√					
MYT230	Kütahya Ware	Turkish/Venetian	Western Turkey	√	√					√	
MYT239	Kütahya Ware	Turkish/Venetian	Western Turkey	√	√						
MYT241	Kütahya Ware	Turkish/Venetian	Western Turkey	√	√					√	
MYT242	Kütahya Ware	Turkish/Venetian	Western Turkey	√	√					√	

Information about the under-study samples and their type of analysis from Chalcis in Euboea, the Athenian Agora in Attica and the Castle of Mytilene in Lesvos.

SAMPLE CODE	POTTERY TYPE	PERIOD	PROVENANCE	OM	pXRF	WDXRF	PETROGRAHY	XRD	SEM FRESH FRACT.SAMPLE	SEM RESIGN SAMPLE	RAMAN
CH100	Didymoteicho Ware	Early Modern	Dardanelles or Northern Greece	√	√	√				√	
CH135	Didymoteicho Ware	Early Modern	Chalcis local	√	√	√			√	√	
MYT202	Overfired Stoneware	Turkish/Venetian	Mytilene local	√	√				√		
MYT243	Tripod stilt	Turkish/Venetian	Western Turkey	√	√	√					
MYT244	Tripod stilt	Turkish/Venetian	Mytilene local	√	√	√					
AGBZY827	Pottery waster	Turkish/Venetian	Athens local	√	√					√	
AGBZY832	Pottery waster	Turkish/Venetian	Athens local	√	√				√	√	
AGBZY836	Pottery waster	Turkish/Venetian	Athens local	√	√	√				√	
AGBZY859	Pottery waster	Turkish/Venetian	Athens local	√	√				√	√	
AGBZY864	Pottery waster	Middle Byzantine	Athens local	√	√				√	√	
AGBZY867	Pottery waster	Middle Byzantine	Athens local	√	√					√	
AGBZY868	Pottery waster	Middle Byzantine	Athens local	√	√				√	√	
MYT245	Pottery waster	Turkish/Venetian	Mytilene local	√	√	√					
TOTAL				245	245	76	30	90	119	66	9

Information about the under-study samples and their type of analysis from Chalcis in Euboea, the Athenian Agora in Attica and the Castle of Mytilene in Lesvos.

LIST OF FIGURES AND TABLES

Figure 1 Map showing Chalcis in Euboea, Athens in Attica and Mytilene in Lesvos in Greece.

Figure 1 Flow chart that illustrates the order of the research methods as carried out in this thesis.

Figure 3 Map of the Byzantine Empire during the 12th century (Laiou 2008, p. 281).

Figure 4 Map of the Byzantine Empire after 1204 (Gregory 2010, p. 331).

Figure 5 Distribution map of important sea lanes in the eastern Mediterranean (Vroom 2016, p. 174).

Figure 6 Chalcis in Euboea. Engraving depicting the siege of 1688 (I. Karakostas collection) (Kontogiannis 2012, p. 64).

Figure 7 Plan of Chalcis in Euboea combining the 1840 topographic plan and the modern settlement grid with the locations mentioned in the text (Kontogiannis 2012, p. 57).

Figure 8 Map from the rescue excavation at Orionos Street 10 in Chalcis in Euboea (Αρχαιολογικόν δελτίον 62, 2007, pp. 590-620).

Figure 9 Rescue excavations in the city, Delivorias plot, Orionos street (Αρχαιολογικόν δελτίον 62, 2007, pp. 590-620).

Figure 10 Byzantine Athens (Chatzidakis 1981).

Figure 11 Map of the Athenian Agora in Attica with Ottoman contexts. Drawing J. Vroom and E. Tzavella. American School of Classical Studies at Athens, Agora Excavations (Vroom 2019, p. 182).

Figure 12 The Athenian Agora in Attica (Camp 2003, p. 39).

Figure 13 Depiction of the Medieval town of Mytilene in Lesvos. Engraving by Giacobbo-Filippo da Bergamo about 1540 (Acheilara 1999, p. 13).

Figure 14 RAF aerial photograph (1916): the Castle of Mytilene in Lesvos and its surroundings (Williams 2009, p. 110).

Figure 15 Map from the Castle of Mytilene in Lesvos (Williams 2009, p. 107).

Figure 16 The Castle of Mytilene in Lesvos, Greece.

Figure 17 The Castle of Mytilene in Lesvos, Greece (Acheilara 1999, pp. 15, 19, 23, 27, 31).

Figure 18 Rectangular kiln with a central pillar (Petridis 2013, p. 207).

Figure 19 Single-spaced rectangular kiln covered by arches. Delphi, workshops of the Southeastern Mansion (Petridis 2013, p. 208).

Figure 20 Rectangular kiln with parallel corridors divided by low walls. Kato Vassiliki, Aetolia (Petridis 2013, p. 208).

Figure 21 Rectangular kiln with a central and secondary corridor, Evropos, Kilkis (Petridis 2013, p. 209).

Figure 22 Round kiln with a central built prop. Elis, Western Peloponnese (Petridis 2013, p. 209).

Figure 23 Round kiln with a central built prop (Petridis 2013, p. 210).

Figure 24 a, Kiln 1, looking southwest (photo from excavation notebook, section O, p. 393. April 9, 1935); b, Kiln 2, from above, looking north (photo from excavation notebook, section N, p. 792, February 22, 1936); c, Kiln 3 (after drawing from the excavation notebook in the Agora Excavation Archives, section N, p. 662). Photos Agora Excavations (MacKay 2015, p. 12).

Figure 25 The local pottery in the analysed samples from Chalcis in Euboea.

Figure 26 The local pottery in the analysed samples from Athens in Attica.

Figure 27 The local pottery in the analysed samples from Mytilene in Lesbos.

Figure 28 The local pottery in the analysed samples from Chalcis in Euboea in each chronological period.

Figure 29 The local pottery in the analysed samples from Athens in each chronological period.

Figure 30 The local pottery in the analysed samples from Mytilene in Lesbos in each chronological period.

Figure 31 The imported pottery in the analysed samples from Chalcis in Euboea.

Figure 32 The imported pottery in the analysed samples from Athens.

Figure 33 The imported pottery in the analysed samples from Mytilene.

Figure 34 The region from which the imported pottery in the analysed samples from Chalcis in Euboea came.

Figure 35 The region from which the imported pottery in the analysed samples from Athens came.

Figure 36 The region from which the imported pottery in the analysed samples from Mytilene in Lesbos came.

Figure 37 Map of Lucera, Acre, Vrea, Kinet Höyük, Paphos and Larnaka, including depictions of a standing single man on Medieval ceramics (Vroom 2018, p. 11). Incised Sgraffito Ware from Chalcis in Euboea (Vroom et al. 2021, p. 455, fig. 5 right).

Figure 38 Scatterplot with the pottery decorative motifs in Chalcis in Euboea, Athens and Mytilene in Lesbos, GR.

Figure 39 Scatterplot with the colours used in Chalcis in Euboea, Athens and Mytilene in Lesbos, GR.

- Figure 40 Maroussi - Kaminia in Attica by A. Mavrogonatos (Vogiatzoglou 2009, p. 90).
- Figure 41 Maroussi - Laboratory of A. Mavrogonatos in Attica. General top view (Vogiatzoglou 2009, p. 91).
- Figure 42 Maroussi - Laboratory of V. Georgoulis in Attica. General top view (Vogiatzoglou 2009, p. 92).
- Figure 43 Maroussi - Kamini of V.Georgouli in Attica (Vogiatzoglou 2009, p. 94).
- Figure 44 Maroussi - Kamini of V.Georgouli in Attica (Vogiatzoglou 2009, p. 94).
- Figure 45 Maroussi - Kaminia Tzanis Kalogerou in Attica. Topographic (Vogiatzoglou 2009, p. 96).
- Figure 46 Maroussi - Kaminia Tzanis Kalogerou in Attica. General top view (Vogiatzoglou 2009, p. 97).
- Figure 47 Maroussi - Kaminia Tzanis Kalogerou in Attica (Vogiatzoglou 2009, p. 98).
- Figure 48 Maroussi - Kaminia Tzanis Kalogerou in Attica (Vogiatzoglou 2009, p. 99).
- Figure 49 Map of pottery workshops in Mantamados in Lesvos, 19th – middle 20th century (Giannopoulou and Demesticha 1998, pp. 100-101).
- Figure 50 Map of pottery workshops in Mantamados in Lesvos, 19th – middle 20th century (Giannopoulou and Demesticha 1998, pp. 100-101).
- Figure 51 Top view of the laboratory and the furnace of Stratis Chatzianastasiou in Kalafatis in Lesvos. Impression-design: N.G. Verveniotis architect, 1997 (Giannopoulou and Demesticha 1998, p. 33).
- Figure 52 Pottery workshop in Agios Stefanos in Lesvos: 1. clay, 2. wheel, 3. σουσμέδες, 4. clay, 5. support buildings, 6. κοσκινίδα, 7. χώμα για κοπάνισμα, 8. kiln, 8a. kiln for glazed objects, 9. fuel. Impression-design: P. Vroucha, architect, 1980 (Giannopoulou and Demesticha 1998, p. 33).
- Figure 53 Drawing of the back view of kiln with one layer, in the area of Agios Stefanos in Lesvos (Psaropoulou 1986, p. 186; Giannopoulou and Demesticha 1998, p. 37).
- Figure 54 Sections of the furnace owned by Stefanos Kouvdīs in Agios Stefanos in Lesvos (Psaropoulou 1986, pp. 188-189; Giannopoulou and Demesticha 1998, p. 38).
- Figure 55 Sections of the furnace owned by Stefanos Kouvdīs in Agios Stefanos in Lesvos. The floor with the holes (top) and its support (bottom) can be distinguished (Psaropoulou 1986, pp. 190-191; Giannopoulou and Demesticha 1998, p. 39).
- Figure 56 Maiolica. Turkish/Venetian period. Italy.
- Figure 57 Slip-Painted Ware. Middle Byzantine to Late Byzantine/Frankish period. Chalcis local (Vroom 2014, p. 80).
- Figure 58 Fine Sgraffito Ware. Middle Byzantine period. Chalcis local.
- Figure 59 Painted Fine Sgraffito Ware. Late Byzantine/Frankish period. Chalcis local (Vroom 2014, p. 86).

Figure 60 Incised Sgraffito Ware. Middle Byzantine to Late Byzantine/Frankish period. Chalcis local (Vroom 2014, p. 90).

Figure 61 Champlevé Ware. Middle Byzantine to Late Byzantine/Frankish period. Chalcis local (Vroom 2014, p. 92).

Figure 62 Champlevé Ware. Middle Byzantine to Late Byzantine/Frankish period. Chalcis local.

Figure 63 Zeuxippus Ware. Late Byzantine/Frankish period. W.Turkey.

Figure 64 Maiolica. Turkish/Venetian period. Italy (Vroom 2014, p. 146).

Figure 65 Green and Brown Painted Ware-variant. Middle Byzantine period. Probably from Athens (Vroom 2014, p. 82).

Figure 66 Fine Sgraffito Ware. Late Byzantine/Frankish period. Probably from Chalcis or Athens (Vroom 2014, p. 84).

Figure 67 Incised Sgraffito Ware. Middle Byzantine period. Probably from Chalcis or Athens.

Figure 68 Monochrome Glazed Ware. Turkish/Venetian period. Athens local.

Figure 69 Zeuxippus Ware Subtypes. Late Byzantine/Frankish period. Probably from Athens.

Figure 70 Polychrome Sgraffito Ware. Turkish/Venetian period. Athens local (Vroom 2014, p. 144).

Figure 71 Polychrome Sgraffito Ware. Turkish/Venetian period. Athens local.

Figure 72 Polychrome Sgraffito Ware. Turkish/Venetian period. Athens local.

Figure 73 Polychrome Sgraffito Ware. Turkish/Venetian period. Athens local.

Figure 74 Polychrome Painted Ware/Maiolica. Turkish/Venetian period. Athens local (Vroom 2014, p. 168).

Figure 75 Polychrome Painted Ware/Maiolica. Turkish/Venetian period. Athens local.

Figure 76 Iznik Ware. Turkish/Venetian period. W-Turkey.

Figure 77 Iznik Ware. Turkish/Venetian period. W-Turkey.

Figure 78 Porcelain. Turkish/Venetian period. Probably from China.

Figure 79 Elaborate Incised Ware. Late Byzantine/Frankish period. Constantinople.

Figure 80 Kütahya Ware. Turkish/Venetian period. Probably from W-Turkey.

Figure 81 Kütahya Ware. Turkish/Venetian period. Probably from W-Turkey.

Figure 82 Porosity decreases with temperature. Very high temperatures are needed to remove the water from clay to achieve porcelain (Fitch 2003, p. 165).

Figure 83 The spread of the lead glaze technology (Fitch 2003, p. 172).

Figure 84 Lead reduces the temperature for working with glass by enhancing fluidity by stabilizing breaks in the glass chains (left) and by providing lead oxide chains to link glass subunits (Fitch 2003, p. 148).

Figure 85 The density of glass modified with K, Na; the surface tension of glasses modified with K, Na, and Pb; and the surface tension of glasses modified with K, Na, and Pb (Fitch 2003, p. 183).

Figure 86 α PbO, tetragonal known as litharge or red lead (Wells 1984; Fitch 2003, p. 184).

Figure 87 β PbO, orthorhombic, also known as massicot (Wells 1984; Fitch 2003, p. 185).

Figure 88 Structure of minium, Pb₃O₄, (Wells 1984; Fitch 2003, p. 186).

Figure 89 Green pigments of the pottery collection from Chalcis in Euboea, the Athenian Agora in Attica and the Castle of Mytilene in Lesvos.

Figure 90 Yellow pigments of the pottery collection from Chalcis in Euboea, the Athenian Agora in Attica and the Castle of Mytilene in Lesvos.

Figure 91 Brown pigments of the pottery collection from Chalcis in Euboea, the Athenian Agora in Attica and the Castle of Mytilene in Lesvos.

Figure 92 pXRF analysis of green pigments.

Figure 93 pXRF analysis of yellow pigments.

Figure 94 pXRF analysis of brown pigments.

Figure 95 pXRF analysis of Lead and Alkali glazes.

Figure 96 Correlation of the ratio K/Fe with Ca/Fe for the body fabrics at Chalcis in Euboea. The samples have separated based on their pottery types, X-Ray Fluorescence Spectroscopy (XRF).

Figure 97 Correlation of the ratio K/Fe with Ca/Fe for the body fabrics at the Athenian Agora in Attica. The samples have separated based on their pottery types, X-Ray Fluorescence Spectroscopy (XRF).

Figure 98 Correlation of the ratio K/Fe with Ca/Fe for the body fabrics at pottery from the Castle of Mytilene in Lesvos. The samples have separated based on their pottery types X-Ray Fluorescence Spectroscopy (XRF).

Figure 99 Correlation of Sr with Ca for the body fabrics at Chalcis in Euboea. The samples have separated based on their pottery types, X-Ray Fluorescence Spectroscopy (XRF).

Figure 100 Correlation of Sr with Ca for the body fabrics at the Athenian Agora in Attica. The samples have separated based on their pottery types, X-Ray Fluorescence Spectroscopy (XRF).

Figure 101 Correlation of Sr with Ca for the body fabrics at pottery from the Castle of Mytilene in Lesvos. The samples have separated based on their pottery types, X-Ray Fluorescence Spectroscopy (XRF).

Figure 102 The Upper and the Lower Percentiles of the Fe Expected Normal Value at body fabrics from Chalcis in Euboea.

Figure 103 The Upper and the Lower Percentiles of the Ca Expected Normal Value at body fabrics from Chalcis in Euboea.

Figure 104 The Upper and the Lower Percentiles of the Fe Expected Normal Value at body fabrics from the Athenian Agora in Attica.

Figure 105 The Upper and the Lower Percentiles of the Ca Expected Normal Value at body fabrics from the Athenian Agora in Attica.

Figure 106 The Upper and the Lower Percentiles of the Fe Expected Normal Value at body fabrics of pottery from the Castle of Mytilene in Lesvos.

Figure 107 The Upper and the Lower Percentiles of the Ca Expected Normal Value at body fabrics of pottery from the Castle of Mytilene in Lesvos.

Figure 108 WD-XRF Hierarchical Clustering of the samples from Chalcis in Euboea and the Athenian Agora in Attica: For normalization the element concentrations were log-ratio transformed with the Fe concentrations as common divisor.

Figure 109 WD-XRF Hierarchical Clustering of the samples from Mytilene in Lesvos: For normalization the element concentrations were log-ratio transformed with the Fe concentrations as common divisor.

Figure 110 Geological map of NE Attica, Greece (after Papanikolaou and Papanikolaou 2007, p. 427).

Figure 111 Geological map of Piraeus in Attica, Greece (Gaitanakis (IGME) 1976-77).

Figure 112 Geological map of Rafina in Attica, Greece (Katsikatsos (IGME) 1966-67; 1977).

Figure 113 Geological map of Koropi-Plaka in Attica, Greece (Latsoudas (IGME) 1976;1977;1979;1991;1992).

Figure 114 Geological map of north Attica, Greece (Clement and Katsikatsos 1982).

Figure 115 Digital elevation model (DEM) of the broader area of the Lilas River catchment and fan delta. One notices clearly the bathymetry of the northern part of the South Euboean Gulf as well as the southern part of the North Euboean (left) (after Karymbalis 2018, p. 3).

Figure 116 Simplified lithological map of the Lilas River drainage basin depicting also a diagram of the percentage area of each one of the lithological types in the catchment. After the Greek Institute of Geology and Mineral Exploitation (IGME) 1:200,000 scale geological map of Greece (right) (after Karymbalis 2018, p. 4).

Figure 117 Geological map of Chalcis in Euboea, Greece (IGME 1976).

Figure 118 Geological map of Aliveri in Euboea, Greece (Katsikatsos (IGME) 1966-67; 1977).

Figure 119 Geological map of Lesvos island, Greece (left) (after Andreadakis 2017).

Figure 120 Geology of Lesvos and the studied area (right) (after Kelepertsis 1992, p.114).

Figure 121 Geological map of Plomari area in Lesvos island, Greece (Hecht (IGME) 1967-1969).

- Figure 122 Petrographic analysis of Main Fabric Group A from Chalcis in Euboea.
- Figure 123 Petrographic analysis of Main Fabric Group A from Chalcis in Euboea.
- Figure 124 Petrographic analysis of Loner A (CH133) and Loner B (CH101) from Chalcis in Euboea.
- Figure 125 Petrographic analysis of Main Fabric Group A from the Athenian Agora in Attica.
- Figure 126 Petrographic analysis of Loner A (AAG70), Loner B (AAG43) and Loner C (AAG50) from the Athenian Agora in Attica.
- Figure 127 Petrographic analysis of Fabric Group A from the Castle of Mytilene in Lesvos.
- Figure 128 Petrographic analysis of Fabric Group B from the Castle of Mytilene in Lesvos.
- Figure 129 Petrographic analysis of Loner A (MYT217) and Loner B (MYT228) from the Castle of Mytilene in Lesvos.
- Figure 130 Chalcis in Euboea and clay deposits areas (Lelantine plain). Drawing M. Staikou.
- Figure 131 The Athenian Agora in Attica and clay deposits areas (Parnitha mountain, Penteli mountain, Mesogaia; Voula-Vari-Vouliagmeni). Drawing M. Staikou.
- Figure 132 The Castle of Mytilene in Lesvos and clay deposits areas (south-east coastal area of Mytilene; Moria; Thermi). Drawing M. Staikou.
- Figure 133 X-Ray Diffraction (XRD) diagrams of Champlévé Ware fragments.
- Figure 134 X-Ray Diffraction (XRD) diagrams of Incised Sgraffito Ware fragments.
- Figure 135 X-Ray Diffraction (XRD) diagrams of Amphora fragments.
- Figure 136 X-Ray Diffraction (XRD) diagrams of Splashed Ware fragments.
- Figure 137 X-Ray Diffraction (XRD) diagrams of Plain Glazed Ware fragments.
- Figure 138 X-Ray Diffraction (XRD) diagrams of Slip-Painted Ware fragments.
- Figure 139 X-Ray Diffraction (XRD) diagrams of Zeuxippus Ware fragments.
- Figure 140 X-Ray Diffraction (XRD) diagrams of Polychrome Painted Ware/Maiolica fragments, Polychrome Painted Ware fragments and Maiolica fragments.
- Figure 141 X-Ray Diffraction (XRD) diagrams of Polychrome Sgraffito Ware fragments.
- Figure 142 X-Ray Diffraction (XRD) diagrams of Monochrome Glazed Ware fragments.
- Figure 143 X-Ray Diffraction (XRD) diagrams of Green and Brown Painted Ware fragments.
- Figure 144 X-Ray Diffraction (XRD) diagrams of Painted Ware fragments.
- Figure 145 X-Ray Diffraction (XRD) diagrams of Polychrome Marbled Ware fragments.
- Figure 146 X-Ray Diffraction (XRD) diagrams of Roulette/Veneto Ware fragments.

- Figure 147 X-Ray Diffraction (XRD) diagrams of Lustre Ware fragments.
- Figure 148 X-Ray Diffraction (XRD) diagrams of Iznik Ware fragments.
- Figure 149 X-Ray Diffraction (XRD) diagrams of Kütahya Ware fragments.
- Figure 150 X-Ray Diffraction (XRD) diagrams of Miletus Ware fragments.
- Figure 151 X-Ray Diffraction (XRD) diagrams of Glazed White Ware II (CH107) fragments, Polychrome White Ware (CH108) fragments and Glazed White Ware IV (MYT203) fragments.
- Figure 152 X-Ray Diffraction (XRD) diagrams of fragments of Glazed Frit Ware (MYT182, CH106) fragments and Frit Ware (CH147) fragments.
- Figure 153 Blue pigments/colour and Dark Blue line pigments. Graphs from the pottery samples from the Castle of Mytilene in Lesvos (top) and of the Athenian Agora in Attica (bottom).
- Figure 154 Turquoise pigments. Graphs from the pottery samples from the Castle of Mytilene in Lesvos samples (top, middle), of the Athenian Agora in Attica, and of Chalcis in Euboea (bottom).
- Figure 155 Dark colours and Dark line pigments. Graphs from the pottery samples from Castle of Mytilene in Lesvos samples (top, middle) and of the Athenian Agora in Attica (bottom).
- Figure 156 Brown pigments. Graphs from the pottery samples from the Castle of Mytilene in Lesvos samples (top, middle) and of the Athenian Agora in Attica (bottom).
- Figure 157 Purple pigments. Graphs from Mytilene samples.
- Figure 158 Green pigments. Graphs from the pottery samples (top) of the Athenian Agora in Attica, of the Castle of Mytilene in Lesvos, and of Chalcis in Euboea (bottom).
- Figure 159 Yellow pigments. Graph from the Athenian Agora in Attica.
- Figure 160 Red pigments. Graph from the Castle of Mytilene in Lesvos.
- Figure 161 Blue/Turquoise pigments under Optical Microscopy and Scanning Electron Microscopy.
- Figure 162 Dark and red pigments under Optical Microscopy and Scanning Electron Microscopy.
- Figure 163 Type of decoration under Optical Microscopy and Scanning Electron Microscopy.
- Figure 164 Type of decoration under Optical Microscopy and Scanning Electron Microscopy.
- Figure 165 Scanning Electron Microscopy (SEM) mapping.
- Figure 166 Scanning Electron Microscopy (SEM) mapping.

Figure 167 Correlation of the SiO₂, Al₂O₃, CaO for the glazes from Chalcis in Euboea through Scanning Electron Microscopy (SEM). The samples have been separated based on their pottery types.

Figure 168 Correlation of the SiO₂, Al₂O₃, CaO for the glazes from the Athenian Agora in Attica through Scanning Electron Microscopy (SEM). The samples have been separated based on their pottery types.

Figure 169 Correlation of the SiO₂, Al₂O₃, CaO for the glazes from the Castle of Mytilene in Lesvos through Scanning Electron Microscopy (SEM). The samples have been separated based on their pottery types.

Figure 170 Correlation of the SiO₂, Al₂O₃, CaO+MgO for the fabrics from Chalcis in Euboea through Scanning Electron Microscopy (SEM). The samples have been separated based on their pottery types.

Figure 171 Correlation of the SiO₂, Al₂O₃, CaO+MgO for the fabrics from the Athenian Agora in Attica through Scanning Electron Microscopy (SEM). The samples have been separated based on their pottery types.

Figure 172 Correlation of the SiO₂, Al₂O₃, CaO+MgO for the fabrics from the Castle of Mytilene in Lesvos through Scanning Electron Microscopy (SEM). The samples have been separated based on their pottery types.

Figure 173 The proportion of Ca or Fe in the body fabrics of local and imported pottery from Chalcis in Euboea through Scanning Electron Microscopy (SEM). The samples have been separated based on their pottery types.

Figure 174 The correlation of Ca, Fe in the body fabrics of local and imported pottery from Chalcis in Euboea through Scanning Electron Microscopy (SEM). The samples have been separated based on their pottery types.

Figure 175 The proportion of Ca or Fe in the body fabrics of local and imported pottery from the Athenian Agora in Attica through Scanning Electron Microscopy (SEM). The samples have separated based on their pottery types.

Figure 176 The correlation of Ca, Fe in the body fabrics of local and imported pottery from the Athenian Agora in Attica through Scanning Electron Microscopy (SEM). The samples have separated based on their pottery types.

Figure 177 The proportion of Ca or Fe in the body fabrics of local and imported pottery from the Castle of Mytilene in Lesvos through Scanning Electron Microscopy (SEM). The samples have separated based on their pottery types.

Figure 178 The correlation of Ca, Fe in the body fabrics of local and imported pottery from the Castle of Mytilene in Lesvos through Scanning Electron Microscopy (SEM). The samples have separated based on their pottery types.

Figure 179 Stages of Vitrification in the sampled pottery collection from Chalcis in Euboea.

Figure 180 Stages of Vitrification in the sampled pottery collection from the Athenian Agora in Attica.

Figure 181 Stages of Vitrification in the sampled pottery collection from the Castle of Mytilene in Lesvos.

- Figure 182 The formation of new minerals in the glaze under firing process.
- Figure 183 The formation of Cristobalite in the body fabric under firing process.
- Figure 184 The formation of new minerals in the body fabric under firing process or deterioration (as Halite).
- Figure 185 Red colour of sample MYT168 (Iznik Ware).
- Figure 186 Brown colour of sample MYT186 (Porcelain).
- Figure 187 Black colour of sample MYT226 (Miletus Ware).
- Figure 188 Dark line of sample MYT179 (Kütahya).
- Figure 189 Blue colour of sample MYT168 (Iznik Ware).
- Figure 190 Blue glaze of sample MYT221 (Porcelain).
- Figure 191 Blue colour of sample MYT170 (Iznik Ware).
- Figure 192 Turquoise colour of sample CH106 (Glazed Frit Ware).
- Figure 193 Green colour of sample CH141 (Champlevé Ware).
- Figure 194 Green colour of sample AAG29 (Polychrome Painted Ware/Maiolica).
- Figure 195 Glaze of sample MYT179 (Kütahya).

Table 1 The total amounts and the percentages of the sampled and analyzed imported and local pottery finds in Chalcis in Euboea, Athens in Attica and Mytilene in Lesvos.

Table 2 Some pottery decorative motifs of the analysed samples from Chalcis in Euboea.

Table 3 Some pottery decorative motifs of the analysed samples from the Athenian Agora in Attica.

Table 4 Some pottery decorative motifs of the analysed samples from Mytilene in Lesvos.

Table 5 Some pottery colours of the analysed samples from Chalcis in Euboea, Athens in Attica and Mytilene in Lesvos.

Table 6 The chronological division of the studied glazed pottery at Athens in Attica (the dateline is provided by J.Vroom).

Table 7 The chronological division of the studied glazed pottery at Chalcis in Euboea (the dateline is provided by J.Vroom).

Table 8 The chronological division of the studied glazed pottery at Mytilene in Lesvos (the dateline is provided by J.Vroom).

Table 9 The typology of the studied pottery at Chalcis in Euboea, Athens in Attica and Mytilene in Lesvos (in chronological order).

Table 10 The effect of oxides on the eutecton and viscosity of glazes (Matthes 1985).

Table 11 The pigments of the glazes (Matthes 1985).

Table 12 The pigments of the glazes (Matthes 1985).

Table 13 The pigments of the glazes (Matthes 1985).

Table 14 Stages of vitrification (Noll 1991; Tite et al 1981; Tite and Maniatis 1975a,b; Tite 1969).

Table 15 pXRF analysis of the pigments (%) of the pottery collection from Chalcis in Euboea, the Athenian Agora in Attica and the Castle of Mytilene in Lesvos.

Table 16 pXRF analysis of pottery glazes (%) from Chalcis in Euboea.

Table 17 pXRF analysis of pottery glazes (%) from the Athenian Agora in Attica.

Table 18 pXRF analysis of pottery glazes (%) from the Castle of Mytilene in Lesvos.

Table 19 pXRF analysis of pottery fabrics from Chalcis in Euboea. Major, minor elements (%) and trace elements were given in ppm.

Table 20 pXRF analysis of pottery fabrics from Chalcis in Euboea. Major, minor elements (%) and trace elements were given in ppm.

Table 21 pXRF analysis of pottery fabrics from the Athenian Agora in Attica. Major, minor elements (%) and trace elements were given in ppm.

Table 22 pXRF analysis of pottery fabrics from the Athenian Agora in Attica. Major, minor elements (%) and trace elements were given in ppm.

Table 23 pXRF analysis of pottery fabrics from the Castle of Mytilene in Lesvos. Major, minor elements (%) and trace elements were given in ppm.

Table 24 pXRF analysis of pottery fabrics from the Castle of Mytilene in Lesvos. Major, minor elements (%) and trace elements were given in ppm.

Table 25 WDXRF analysis of pottery fabrics from the Athenian Agora in Attica. Major, minor elements (%) and trace elements were given in ppm.

Table 26 WDXRF analysis of pottery fabrics from Chalcis in Euboea. Major, minor elements (%) and trace elements were given in ppm.

Table 27 WDXRF analysis of pottery fabrics (ppm) from the Castle of Mytilene in Lesvos.

Table 28 Minerals, chemical formulae, and the diagnostic XRD peaks (d001) used for identification in the present study.

Table 29 X-Ray Diffraction (XRD) in the sampled pottery collection from Chalcis in Euboea.

Table 30 X-Ray Diffraction (XRD) in the sampled pottery collection from the Athenian Agora in Attica.

Table 31 X-Ray Diffraction (XRD) in the sampled pottery collection from the Castle of Mytilene in Lesvos.

Table 32 X-Ray Diffraction (XRD) results that were separated based on the sampled pottery types.

Table 33 X-Ray Diffraction (XRD) results that were separated based on the sampled pottery types.

Table 34 X-Ray Diffraction (XRD) results that were separated based on the sampled pottery types.

Table 35 Firing Temperature according to X-Ray Diffraction (XRD) analyses in the sampled pottery collection from Chalcis in Euboea.

Table 36 Firing Temperature according to X-Ray Diffraction (XRD) analyses in the sampled pottery collection in Attica from the Athenian Agora pottery.

Table 37 Firing Temperature according to X-Ray Diffraction (XRD) analyses in the sampled pottery collection from the Castle of Mytilene in Lesvos.

Table 38 Scanning Electron Microscopy analysis of the pigments in the sampled pottery collection from Chalcis in Euboea (%).

Table 39 Scanning Electron Microscopy analysis of polished samples' glazes in the sampled pottery collection from Chalcis in Euboea (%).

Table 40 Scanning Electron Microscopy analysis of polished samples' slips layers in the sampled pottery collection from Chalcis in Euboea (%).

Table 41 Scanning Electron Microscopy analysis of polished samples' fabrics in the sampled pottery collection from Chalcis in Euboea (%).

Table 42 Scanning Electron Microscopy analysis of the pigments in the sampled pottery collection from the Athenian Agora in Attica (%).

Table 43 Scanning Electron Microscopy analysis of polished samples' glazes in the sampled pottery collection from the Athenian Agora in Attica (%).

Table 44 Scanning Electron Microscopy analysis of polished samples' slips in the sampled pottery collection from the Athenian Agora in Attica (%).

Table 45 Scanning Electron Microscopy analysis of polished samples' fabrics in the sampled pottery collection from the Athenian Agora in Attica (%).

Table 46 Scanning Electron Microscopy analysis of polished samples' fabrics in the sampled pottery collection from the Athenian Agora in Attica (%).

Table 47 Scanning Electron Microscopy analysis of the pigments in the sampled pottery collection from the Castle of Mytilene in Lesvos (%).

Table 48 Scanning Electron Microscopy analysis of the pigments in the sampled pottery collection from the Castle of Mytilene in Lesvos (%).

Table 49 Scanning Electron Microscopy analysis of polished samples' glazes in the sampled pottery collection from the Castle of Mytilene in Lesvos (%).

Table 50 Scanning Electron Microscopy analysis of the polished samples' slips in the sampled pottery collection from the Castle of Mytilene in Lesvos (%).

Table 51 Scanning Electron Microscopy analysis of polished samples' fabrics in the sampled pottery collection from the Castle of Mytilene in Lesvos (%).

Table 52 Scanning Electron Microscopy analysis of polished samples' fabrics in the sampled pottery collection from the Castle of Mytilene in Lesvos (%).

Table 53 Stages of Vitriification, Temperatures of the sampled pottery collection from Chalcis in Euboea through Scanning Electron Microscopy (SEM).

Table 54 Stages of Vitriification, Temperatures of the sampled pottery collection from the Athenian Agora in Attica through Scanning Electron Microscopy (SEM).

Table 55 Stages of Vitriification, Temperatures of the sampled pottery collection from the Castle of Mytilene in Lesvos through Scanning Electron Microscopy (SEM).

Table 56 Total description of the Stages of Vitriification and Temperatures of the sampled pottery collection from Chalcis in Euboea through Scanning Electron Microscopy (SEM).

Table 57 Total description of the Stages of Vitriification and Temperatures of the sampled pottery collection from the Athenian Agora in Attica through Scanning Electron Microscopy (SEM).

Table 58 Total description of the Stages of Vitriification and Temperatures of the sampled pottery collection from the Castle of Mytilene through Scanning Electron Microscopy (SEM).