



Universiteit
Leiden
The Netherlands

Interaction between secondary mitral regurgitation and left atrial function and their prognostic implications after cardiac resynchronization therapy

Stassen, J.; Galloo, X.; Hirasawa, K.; Bijl, P. van der; Leon, M.B.; Marsan, N.A.; Bax, J.J.

Citation

Stassen, J., Galloo, X., Hirasawa, K., Bijl, P. van der, Leon, M. B., Marsan, N. A., & Bax, J. J. (2022). Interaction between secondary mitral regurgitation and left atrial function and their prognostic implications after cardiac resynchronization therapy. *European Heart Journal - Cardiovascular Imaging*, 24(4), 532-541. doi:10.1093/ehjci/jeac149





Version: Publisher's Version

License: [Creative Commons CC BY 4.0 license](https://creativecommons.org/licenses/by/4.0/)

Downloaded from: <https://hdl.handle.net/1887/3567718>

Note: To cite this publication please use the final published version (if applicable).

Interaction between secondary mitral regurgitation and left atrial function and their prognostic implications after cardiac resynchronization therapy

Jan Stassen ^{1,2}, Xavier Galloo ^{1,3}, Kensuke Hirasawa ¹, Pieter van der Bijl ¹, Martin B. Leon⁴, Nina Ajmone Marsan¹, and Jeroen J. Bax^{1,5*}

¹Department of Cardiology, Leiden University Medical Center, Albinusdreef 2, 2300 RC Leiden, The Netherlands; ²Department of Cardiology, Jessa Hospital, Stadsomvaart 11, 3500 Hasselt, Belgium; ³Department of Cardiology, Universitair Ziekenhuis Brussel, Laarbeeklaan 101, 1090 Brussels, Belgium; ⁴Department of Cardiology, Columbia University Irving Medical Center/Presbyterian Hospital and Cardiovascular Research Foundation, New York, NY 10032, USA; and ⁵Turku Heart Center, University of Turku and Turku University Hospital, Kiinamylynkatu 4-8, FI-20520 Turku, Finland

Received 23 April 2022; revised 7 July 2022; accepted 15 July 2022; online publish-ahead-of-print 28 July 2022

Aims

Left atrial (LA) function is a strong prognostic marker in patients with heart failure and functional mitral regurgitation (MR). Although cardiac resynchronization therapy (CRT) has shown to improve MR severity, the interaction between a reduction in MR severity and an increase in LA function, as well as its association with outcomes, has not been investigated.

Methods and results

LA reservoir strain (RS) was evaluated with speckle tracking echocardiography in patients with at least moderate functional MR undergoing CRT implantation. MR improvement was defined as at least 1 grade improvement in MR severity at 6 months after CRT implantation. The primary endpoint was all-cause mortality. A total of 340 patients (mean age 66 ± 10 years, 73% male) were included, of whom 200 (59%) showed MR improvement at 6 months follow-up. On multivariable analysis, an improvement in MR severity was independently associated with an increase in LARS (odds ratio 1.008; 95% confidence interval 1.003–1.013; $P = 0.002$). After multivariable adjustment, including baseline and follow-up variables, an increase in LARS was significantly associated with lower mortality. MR improvers showing LARS increase had the lowest mortality rate, whereas outcomes were not significantly different between MR non-improvers and MR improvers showing no LARS increase ($P = 0.236$).

Conclusion

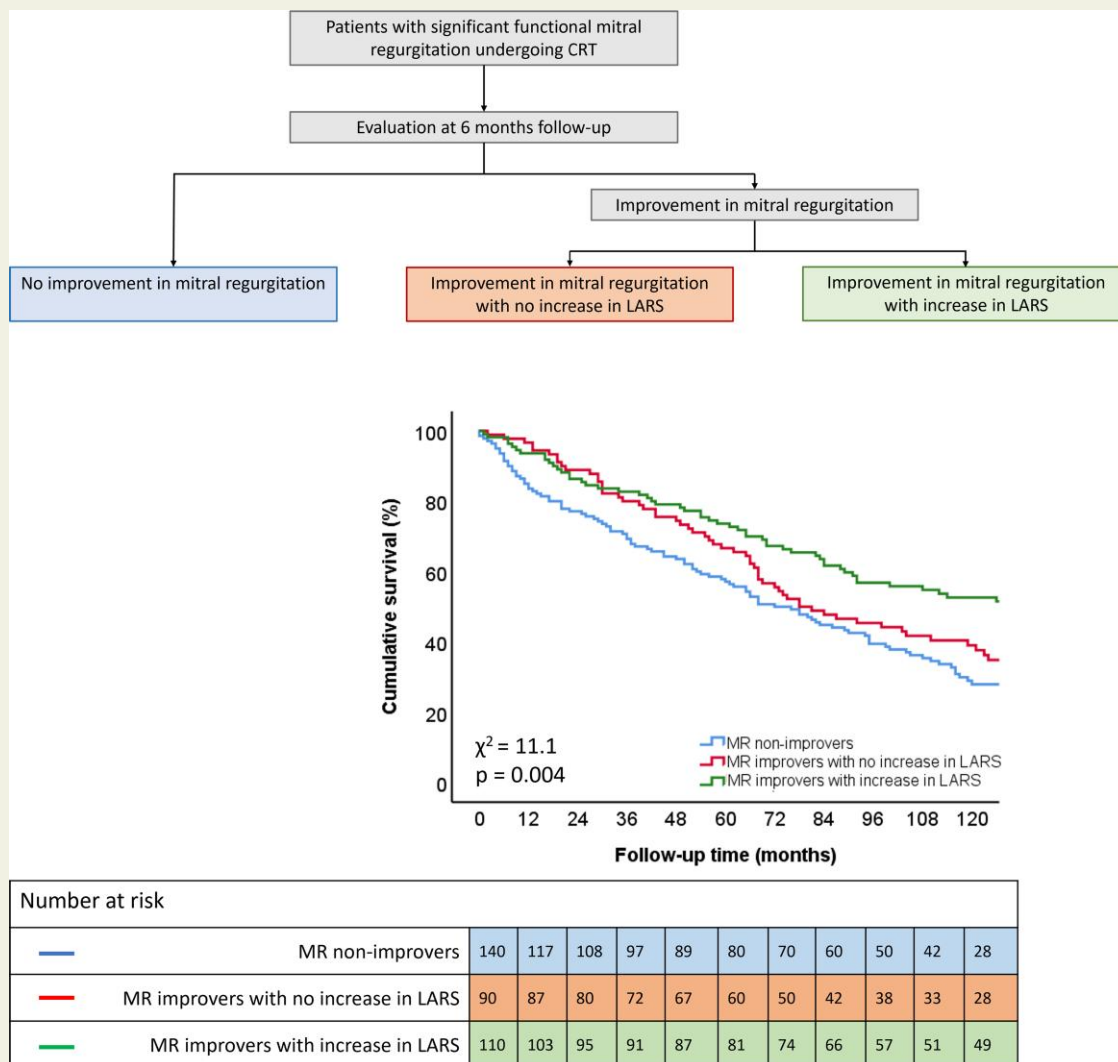
A significant reduction in MR severity at 6 months after CRT implantation is independently associated with an increase in LARS. In addition, an increase in LARS is independently associated with lower all-cause mortality in patients with heart failure and significant functional MR.

* Corresponding author. Tel: +31 715262020; Fax: +31 715266809. Email: jj.bax@lumc.nl

© The Author(s) 2022. Published by Oxford University Press on behalf of the European Society of Cardiology.

This is an Open Access article distributed under the terms of the Creative Commons Attribution License (<https://creativecommons.org/licenses/by/4.0/>), which permits unrestricted reuse, distribution, and reproduction in any medium, provided the original work is properly cited.

Graphical Abstract



Keywords

functional mitral regurgitation • left atrial reservoir strain • heart failure • cardiac resynchronization therapy • mortality

Introduction

Functional mitral regurgitation (MR) is common in patients with heart failure (HF) and reduced left ventricular (LV) ejection fraction (EF) and is associated with an increased risk of HF hospitalization and mortality.^{1,2} Cardiac adverse remodelling in patients with HF and functional MR does not only affect the LV, but also the left atrium (LA).^{3,4} LA adverse remodelling is accompanied by an increase in interstitial fibrosis of the atrial wall, leading to a reduction in LA compliance. A reduced LA compliance increases LA pressure and the pulsatile load on the pulmonary circulation, contributing to the development of pulmonary hypertension and right ventricular-pulmonary artery uncoupling.⁵ Recent studies have shown that LA reservoir function, measured by speckle-tracking echocardiography, has incremental prognostic value over LA volume and LV systolic

function in patients with HF and reduced LVEF, as well as in patients with moderate and severe functional MR.^{6,7}

Cardiac resynchronization therapy (CRT) is an established treatment for well-selected patients with HF who remain symptomatic despite optimal medical therapy and has the potential to reduce functional MR severity and induce LA reverse remodelling.^{8–10} Both LA reverse remodelling and a reduction in MR severity have been linked to better cardiovascular outcomes in patients with HF receiving CRT.^{9,11,12} Despite this evidence, the interaction between a reduction in MR severity and an improvement in LA function, as well as their association with outcomes, has not been investigated. Accordingly, the aim of the current study was to investigate the association between a reduction in MR severity and an increase in LA reservoir strain (RS) and their prognostic implications in CRT recipients with moderate or severe functional MR.

Methods

Patient population

Patients who had significant (i.e. moderate and severe) functional MR and underwent CRT implantation between July 2000 and September 2014 according to prevailing guideline recommendations⁸ were included from an ongoing single-centre registry at the Leiden University Medical Center in the Netherlands. An ischaemic aetiology of HF was defined by the presence of significant coronary artery disease on invasive coronary angiography. Patients with less than moderate functional MR, previous mitral valve intervention, primary or mixed aetiology, haemodynamically unstable condition at the time of echocardiography or with echocardiographic image quality not allowing accurate two-dimensional speckle tracking echocardiography (i.e. insufficient tracking of the LA wall or the LA could not be entirely visualized), were excluded (see [Supplementary data online, Figure S1](#)). No patients underwent percutaneous or surgical mitral valve intervention at follow-up. All patients underwent complete clinical and echocardiographic evaluation. Patient information was prospectively collected from the departmental cardiology information system (EPD-vision; Leiden University Medical Center, Leiden, the Netherlands) and retrospectively analyzed. Clinical data included demographic characteristics, cardiovascular risk factors, comorbidities, New York Heart Association functional class and HF medication. Quality of life was evaluated using the Minnesota Living with HF Questionnaire. The study complies with the Declaration of Helsinki and was approved by the Institutional Review Board. Considering the retrospective nature of the study and all data being handled anonymously, the Medical Ethical Committee waived the need for patient written informed consent.

Echocardiography

All patients underwent transthoracic echocardiography before [median time: 0 (0–0) months] and 6 months [median time: 6 (5–6) months] after CRT implantation in the left lateral decubitus position with commercially available ultrasound equipment (Vivid 7 and E9, GE-Vingmed, Horten, Norway). Electrocardiographic-triggered echocardiographic data were stored digitally in a cine-loop format for offline analysis using EchoPAC version 203 (GE Medical Systems, Horten, Norway). Measurements were performed by two experienced echocardiographers (J.S., X.G.). LV volumes, LVEF and LA volumes were measured using the biplane Simpson's method.¹³ Tricuspid annular plane systolic excursion was measured on M-mode recordings of the lateral tricuspid annulus in a right ventricular-focused view.¹³ The severity of mitral and tricuspid regurgitation was assessed using a multiparametric approach, as recommended by current guidelines.¹⁴ MR severity was graded according to current recommendations using an integrative approach that includes qualitative, semiquantitative and quantitative data and was graded on a 4-point scale: none (grade 0), mild (grade 1), moderate (grade 2) and severe (grade 3).¹⁴ Significant MR was defined as grade 2 or 3. Speckle-tracking LV global longitudinal strain (GLS) was averaged from 17 LV segments, and measured from apical views (two-, three-, and four-chamber).¹⁵ The region of interest was traced manually and adjusted to the myocardial thickness. LA speckle-tracking strain was measured from the apical four-chamber view with the onset of the QRS complex used as the zero-reference point.¹⁶ The endocardium of the LA wall was traced manually and corrected by adjusting the region of interest or the width

of the contour, excluding the pulmonary vein ostia and LA appendage. LARS was measured directly from the LA strain vs. time curve.¹² LARS was chosen over LA conduit strain and LA contractile strain because it shows a good correlation with LA wall fibrosis on cardiac magnetic resonance imaging¹⁷ and can be measured in patients with atrial fibrillation.¹⁶ Both LV GLS and LARS are represented as absolute (i.e. positive) values.

CRT implantation

CRT implantation was performed according to a standard approach, i.e. insertion of the right atrial and ventricular leads via the subclavian or cephalic veins. Before insertion of the LV lead, coronary sinus venography was performed. The LV pacing lead was then introduced into the coronary sinus through an 8 Fr guiding catheter, and positioned in a posterior or posterolateral vein, if possible. A posterior or lateral LV lead position was accomplished in 85% of the patients. Defibrillator functionality was present in 98% of the implanted devices. CRT recipients were followed up at regular intervals at the HF outpatient clinic, at which time the device was interrogated. Atrioventricular and interventricular delays were empirically set at 120–140 and 0 ms, respectively. CRT optimization was performed during follow-up visits at the discretion of the treating physician.

Clinical endpoints

Patients were followed-up for the occurrence of all-cause mortality. Data on mortality were obtained from the departmental cardiology information system (EPD-Vision, Leiden University Medical Center, Leiden, The Netherlands), which is linked to the governmental death registry database. Follow-up data were complete for all patients.

Statistical analysis

Continuous data are presented as mean \pm standard deviation when normally distributed and as median and interquartile range when not normally distributed. Categorical data are presented as frequencies and percentages. Continuous variables were compared using the independent samples Student's *t*-test when normally distributed, whereas the Mann–Whitney *U* test was used to compare continuous variables that did not have a normal distribution. Categorical variables were compared using the Pearson chi-square test. The inter- and intra-observer variability of LARS measurements were assessed by calculating the intra-class correlation coefficient on 20 randomly selected patients. The intra-class correlation coefficients for inter- and intra-observer variability were 0.94 [95% confidence interval (CI): 0.85–0.97, $P < 0.001$] and 0.95 (95% CI: 0.87–0.98, $P < 0.001$), respectively. The intra-class correlation coefficients for inter- and intra-observer variability of LV GLS were 0.92 (95% CI: 0.84–0.97, $P < 0.001$) and 0.97 (95% CI: 0.89–0.99, $P < 0.001$), respectively. The interobserver variability of grading MR severity was assessed in 50 randomly selected patients, showing excellent interobserver agreement (Cohen's Kappa 0.96; 95% CI: 0.88–0.99; $P < 0.001$). The association between MR improvement and echocardiographic parameters of cardiac remodelling was evaluated using multivariable logistic regression analysis. The odds ratio (OR) and 95% CI were calculated and reported. Patients were divided in two groups according to the change in functional MR severity at 6 months after CRT implantation: MR improvers and MR non-improvers. MR improvement was defined as an improvement of at least 1 grade in MR severity. Event-free survival curves were generated using the Kaplan–Meier method and differences between groups were analyzed using the log-rank test. Uni- and

Table 1 Baseline clinical characteristics

	Overall population (N = 340)	MR non-improvers (N = 140)	MR improvers (N = 200)	P-value
Age, years	66 (±10)	65 (±11)	67 (±9)	0.062
Male sex (%)	249 (73.2%)	105 (75.0%)	144 (72.0%)	0.539
Arterial hypertension (%)	169 (49.7%)	68 (50.4%)	101 (49.2%)	0.840
Diabetes mellitus (%)	65 (19.1%)	29 (20.7%)	36 (18.0%)	0.531
Dyslipidaemia (%)	142 (42.5%)	57 (41.6%)	85 (43.1%)	0.779
Current smoker (%)	48 (14.2%)	18 (13.0%)	30 (15.1%)	0.142
BMI, kg/m ²	26.1 (±3.9)	25.7 (±3.9)	26.5 (±3.9)	0.064
Ischaemic aetiology (%)	199 (58.5%)	86 (61.4%)	113 (56.5%)	0.364
PCI	25 (7.4%)	14 (10.0%)	11 (5.5%)	0.118
CABG	35 (10.3%)	14 (10.0%)	21 (10.5%)	0.881
QoL score	31 (17–45)	36 (20–51)	26 (14–43)	0.001
6MWT, metres	331 (±111)	320 (±108)	340 (±112)	0.138
NYHA III-IV (%)	236 (69.8%)	107 (76.4%)	129 (65.2%)	0.026
Sinus rhythm (%)	233 (68.5%)	89 (63.6%)	144 (72.0%)	0.218
QRS duration, ms	157 (±34)	157 (±36)	158 (±33)	0.847
Beta-blocker (%)	250 (73.5%)	101 (72.1%)	149 (74.5%)	0.628
ACE-i/ARB (%)	301 (88.5%)	119 (85.0%)	182 (91.0%)	0.088
MRA (%)	147 (43.2%)	63 (45.0%)	84 (42.0%)	0.583
Diuretics (%)	286 (84.1%)	120 (85.7%)	166 (83.0%)	0.500
Statin (%)	197 (57.9%)	79 (56.4%)	118 (59.0%)	0.636
eGFR, mL/min/1.73 m ²	63.2 (±22.7)	62.6 (±24.8)	63.7 (±21.2)	0.667
Haemoglobin, g/dL	13.3 (±1.6)	13.0 (±1.6)	13.4 (±1.4)	0.002

Values are presented as mean ± SD, median (IQR), or n (%). Values in bold have a P-value < 0.05.

ACE-i, angiotensin-converting enzyme inhibitor; ARB, angiotensin receptor blocker; BMI, body mass index; CABG, coronary artery bypass grafting; eGFR, estimated glomerular filtration rate; MRA, mineralocorticoid receptor antagonist; MWT, minute walking test; NYHA, New York Heart Association; PCI, percutaneous coronary intervention; QoL, quality of life.

multivariable analyses of time to event were performed using Cox proportional hazard models. The hazard ratio (HR) and 95% CI were calculated and reported. In the univariable analysis, variables with a P-value < 0.05 were considered statistically significant and entered in the multivariable model. The proportional hazards assumption was verified through the evaluation of Schoenfeld residuals. To inspect for multicollinearity, the Pearson correlation coefficient was calculated between continuous variables, assuming no significant multicollinearity when the correlation coefficient was < 50%. In addition, the Variation Inflation Factor was calculated, assuming no significant multicollinearity when this value was < 5. A two-tailed P-value < 0.05 was considered statistically significant. Statistical analysis was performed using SPSS for Windows, version 25.0 (IBM Corporation, Armonk, New York).

Results

Patient population

A total of 340 patients (mean age 66 ± 10 years, 73% male) who had significant functional MR and subsequently underwent CRT implantation were included (see [Supplementary data online, Figure S1](#)). Of these 340 patients, 235 (69%) had moderate MR and 105 (31%)

severe MR. Baseline clinical variables are shown in [Table 1](#), while [Table 2](#) summarizes the echocardiographic data for the overall population prior to CRT implantation. The majority of patients (70%) were in New York Heart Association functional class III-IV and 59% of the patients had an ischaemic aetiology of HF. Mean LVEF was 26 ± 8%, mean LV GLS was 7.3 ± 3.2%, median LARS was 10.5% (7.1–16.7%) and mean vena contracta was 6.0 ± 1.9 mm.

There were 200 (59%) patients that showed at least 1 grade improvement in MR severity at 6 months' follow-up. The percentage of patients showing MR improvement was not different between patients with moderate vs. severe MR at baseline (56% vs. 65%, P = 0.094). Baseline vena contracta was not different between MR improvers and MR non-improvers (5.9 ± 1.9 vs. 6.0 ± 2.0 mm; P = 0.549). Patients who showed MR improvement were less likely to be in New York Heart Association III-IV, had a higher quality of life score (according to the Minnesota Living with HF Questionnaire) and had higher haemoglobin values at baseline. In addition, patients who showed MR improvement had smaller LA volumes, more preserved LARS, lower tricuspid regurgitation velocities and a lower percentage of concomitant moderate or severe tricuspid regurgitation. There was no difference in LV lead placement in MR improvers vs. MR non-improvers (P = 0.103).

Table 2 Baseline echocardiographic characteristics

	Overall population (N = 340)	MR non-improvers (N = 140)	MR improvers (N = 200)	P-value
LV EDV, mL	208 (162–254)	206 (157–264)	208 (164–245)	0.837
LV ESV, mL	153 (113–190)	154 (107–203)	153 (117–188)	0.831
LVEF, %	26.4 (±7.7)	26.4 (±8.2)	26.4 (±7.4)	0.995
LV GLS, %	7.3 (±3.2)	7.2 (±3.4)	7.3 (±3.1)	0.629
LAVi, mL/m ²	46.1 (±17.5)	48.7 (±17.2)	44.3 (±17.5)	0.025
LARS, %	10.5 (7.1–16.7)	9.3 (6.3–14.7)	11.6 (7.5–17.6)	0.016
TAPSE, mm	16.3 (±4.9)	16.2 (±5.4)	16.4 (±4.5)	0.714
TR max velocity, m/s	2.7 (±0.5)	2.8 (±0.5)	2.7 (±0.6)	0.041
Moderate or severe TR (%)	90 (30.9%)	48 (39.0%)	42 (25.0%)	0.011

Values are presented as mean ± SD, median (IQR), or n (%). Values in bold have a P-value < 0.05.

EDV, end-diastolic volume; ESV, end-systolic volume; LAVi, left atrial volume index; TR, tricuspid regurgitation.

Table 3 Relative changes in echocardiographic variables at 6-months follow-up

	Overall population (N = 340)	MR non-improvers (N = 140)	MR improvers (N = 200)	P-value
LV EDV, %	−10 ± 19	−2 ± 18	−16 ± 18	<0.001
LV ESV, %	−17 ± 23	−7 ± 22	−24 ± 20	<0.001
LVEF, %	31 ± 43	21 ± 40	37 ± 43	0.001
LV GLS, %	35 ± 7	24 ± 8	43 ± 10	0.178
LAVi, %	−3 ± 34	3.5 ± 37	−7 ± 30	0.004
LARS, %	31 ± 5	10 ± 5	46 ± 8	<0.001
TAPSE, %	9 ± 36	11 ± 35	7 ± 37	0.475
TR max velocity, %	6 ± 59	1.4 ± 19	8.9 ± 78	0.337

Values are presented as mean ± SD. Values in bold have a P-value < 0.05.

EDV, end-diastolic volume; ESV, end-systolic volume; LAVi, left atrial volume index; TR, tricuspid regurgitation.

Changes in echocardiographic characteristics at 6 months' follow-up

Changes in echocardiographic parameters at 6 months' follow-up, expressed as a percentage change, are summarized in *Table 3*. Changes, expressed as an absolute change, are shown in [Supplementary data online, Table S1](#). Patients who showed an improvement in MR severity had a more pronounced reduction in LV end-diastolic volume, LV end-systolic volume and LA volume and a more pronounced increase in LVEF and LARS. Of interest, none of the patients underwent coronary intervention (percutaneous coronary intervention or coronary artery bypass grafting) between baseline and 6 months follow-up.

Independent association between MR improvement and changes in echocardiographic characteristics

Table 4 shows the multivariable logistic regression analysis to assess the association between changes in echocardiographic parameters at 6 months' follow-up and MR improvement. A reduction in LV end-systolic volume (OR 0.974; 95% CI: 0.957–0.991; *P* = 0.003) and an

increase in LARS (OR 1.008; 95% CI: 1.003–1.013; *P* = 0.002) at 6 months after CRT implantation, were independently associated with MR improvement.

LARS and MR improvement: prognostic implications

During a median follow-up of 84 (39–135) months, 224 (66%) patients died. There was no significant difference in mortality rates between patients with moderate vs. severe MR at baseline (see [Supplementary data online, Figure S2](#)). In contrast, patients who had MR improvement experienced significantly lower mortality rates when compared to patients showing no MR improvement (5, 13, and 30% vs. 16, 23, and 43% at 1-, 2-, and 5-year follow-up, respectively, *P* = 0.005) (*Figure 1A*). There was no interaction between MR severity at baseline and MR improvement with outcomes (*P* = 0.526). Similarly, patients showing a greater increase in LARS (defined as a percentage change ≥9.4%, which is the median value of the relative change in LARS) experienced significantly lower mortality rates when compared to patients showing a smaller increase in LARS (defined as a percentage change <9.4%) (9, 15, and 30% vs. 10, 18, and

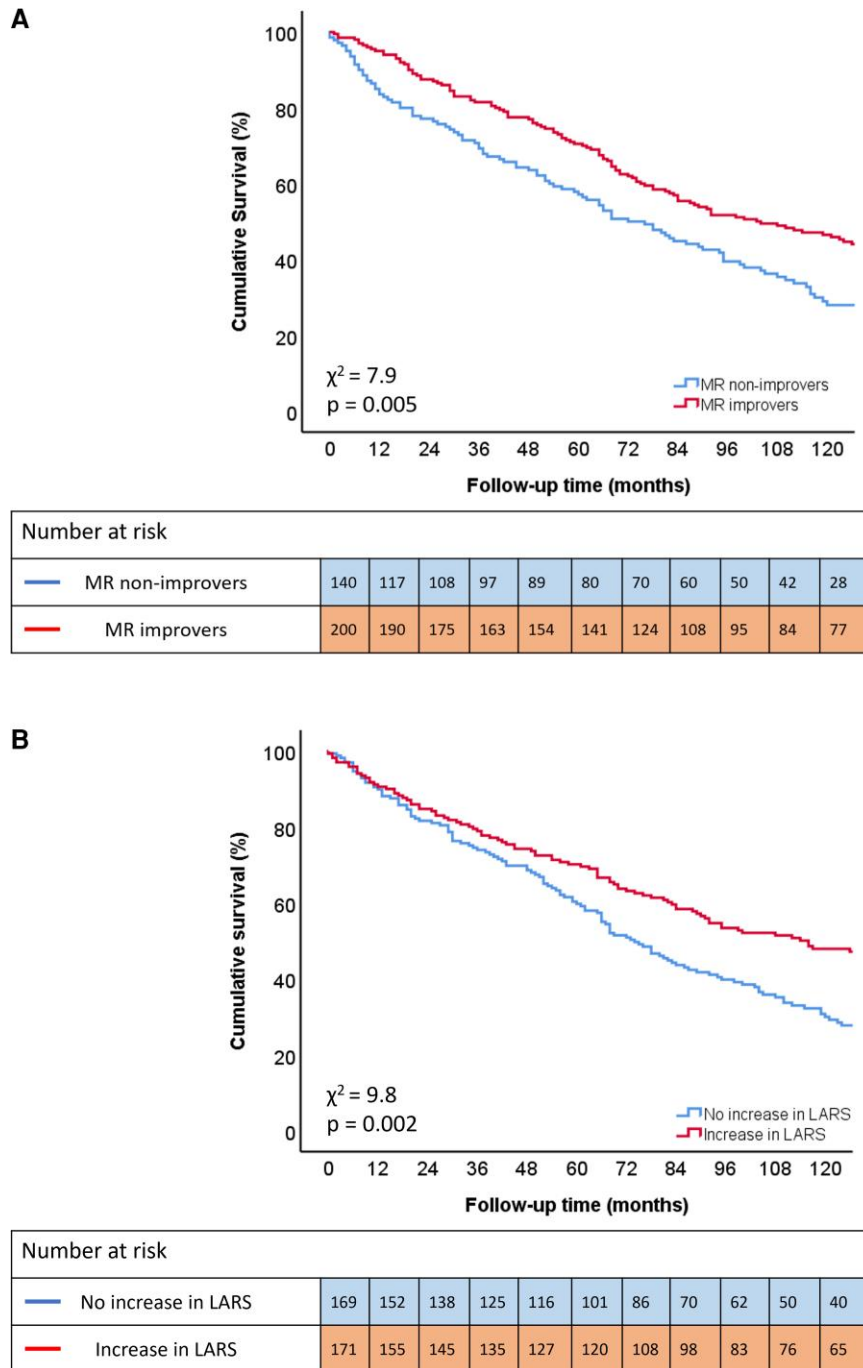


Figure 1 Kaplan–Meier curve for time to cumulative survival according to MR improvement (A) and increase in LARS (B).

improvement in functional MR severity after CRT implantation is independently associated with an increase in LARS. This increase in LARS was firmly linked to lower all-cause mortality. MR improvers showing a simultaneous increase in LARS had the lowest mortality rate, whereas outcomes were not significantly different between MR improvers showing no increase in LARS and MR non-improvers. Therefore, it appears that impaired LA dynamics not only reflect abnormalities in LV filling pressure (due to the underlying HF), but are also significantly influenced by the haemodynamic changes caused by

the underlying functional MR. CRT may (partially) restore the impaired LA dynamics caused by functional MR, thereby improving prognosis. Interestingly, MR improvement was associated with an early survival benefit, but this was only maintained in patients who also showed an increase in LARS (Figure 2). MR improvement could perhaps be considered as a marker of improved haemodynamics (i.e. an immediate observed effect), whereas an increase in LARS could be considered a marker of LA reverse remodelling (i.e. a more long-term observed effect). Patients in whom LARS does not increase

Table 5 Uni- and multivariable cox regression analyses to identify associates of all-cause mortality in patients with significant MR undergoing CRT implantation

	Univariable analysis		Multivariable analysis	
	HR (95% CI)	P-value	HR (95% CI)	P-value
Age, years	1.047 (1.032–1.063)	<0.001	1.032 (1.012–1.052)	0.002
Male sex	1.781 (1.289–2.460)	<0.001	0.790 (0.518–1.204)	0.273
eGFR, mL/min/1.73 m ²	1.003 (1.002–1.004)	<0.001	1.008 (1.003–1.012)	<0.001
NYHA III–IV	1.551 (1.146–2.100)	0.005	1.136 (0.784–1.647)	0.500
Ischaemic aetiology	1.869 (1.411–2.474)	<0.001	1.285 (0.900–1.835)	0.167
Atrial fibrillation	1.088 (0.909–1.303)	0.356	—	
QRS duration, ms	1.000 (0.996–1.004)	0.833	—	
Baseline LV ESV, mL	1.001 (0.999–1.004)	0.181	—	
Relative change in LV ESV, %	1.016 (1.010–1.022)	<0.001	1.001 (0.992–1.011)	0.758
Baseline LVEF, %	0.991 (0.974–1.009)	0.322	—	
Relative change in LVEF, %	0.999 (0.998–1.001)	0.270	—	
Baseline LV GLS, %	0.947 (0.907–0.988)	0.013	0.977 (0.927–1.030)	0.383
Relative change in LV GLS, %	0.968 (0.953–0.984)	<0.001	0.996 (0.991–1.000)	0.077
Baseline TAPSE, mm	0.973 (0.963–0.984)	<0.001	0.983 (0.970–0.997)	0.016
Relative change in TAPSE, %	1.002 (0.992–1.012)	0.690	—	
Baseline TR max velocity, m/s	2.400 (1.786–3.223)	<0.001	1.687 (1.211–2.350)	0.002
Relative change in TR max velocity, %	0.994 (0.987–1.000)	0.060	—	
LAVi, mL/m ²	1.014 (1.007–1.020)	<0.001	1.003 (0.994–1.012)	0.521
Relative change in LAVi, %	1.001 (0.998–1.005)	0.390	—	
LARS, %	0.959 (0.939–0.980)	<0.001	0.969 (0.937–1.002)	0.064
Relative change in LARS, %	0.997 (0.995–0.999)	0.001	0.997 (0.995–1.000)	0.030
MR improvement at 6 months	0.686 (0.527–0.894)	0.005	1.122 (0.788–1.596)	0.523

Values in bold have a P-value < 0.05.

ACE-i, angiotensin-converting enzyme inhibitor; ARB, angiotensin receptor blocker; BMI, body mass index; CABG, coronary artery bypass grafting; eGFR, estimated glomerular filtration rate; EDV, end-diastolic volume; ESV, end-systolic volume; LAVi, left atrial volume index; MRA, mineralocorticoid receptor antagonist; MWT, minute walking test; NYHA, New York Heart Association; PCI, percutaneous coronary intervention; QoL, quality of life; TR, tricuspid regurgitation.

despite significant MR reduction, may have a more 'proportionate MR' (i.e. the degree of MR is expected for the amount of LV adverse remodelling and has no individual effect on LA dynamics) or the fibrotic LA may be irreversibly damaged. Interestingly, LARS was the only echocardiographic parameter in the current study in which a change after 6 months of CRT was associated with better outcomes. After extensively adjusting for various clinical and echocardiographic variables at baseline and follow-up, only a change in LARS, together with age, renal function, baseline RV systolic function and baseline peak pulmonary artery pressures were independently associated with long-term outcome.

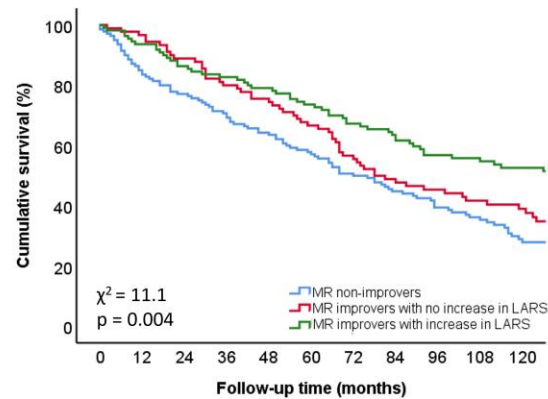
Clinical implications

Significant functional MR is strongly associated with a decreased quality of life and an increased risk of cardiovascular events, including HF hospitalization and mortality.² Due to the high prevalence and poor outcomes, significant efforts have been undertaken to reduce functional MR severity and to understand which patients may benefit from interventional therapies. Although CRT has been shown to reduce functional MR, it remains incompletely understood how this

improvement in functional MR benefits individual patients, in addition to the proven effects of CRT on LV reverse remodelling (independently of the presence of functional MR). It also remains incompletely understood why some patients with MR reduction after CRT do not derive any clinical benefit or reduction in cardiovascular events. Sequential measurements of LARS before and after CRT implantation may provide more insight into the beneficial effects of CRT and may allow the identification of a subgroup of patients who undergo significant functional MR improvement, but who will nevertheless experience suboptimal outcomes. The identification of such individuals may argue for more intensive follow-up, as the full benefit of MR reduction post-CRT cannot be expected in these patients. Whether more recently introduced HF treatments, such as sodium-glucose co-transport 2 inhibitors and angiotensin-neprilysin inhibitors may prove to have beneficial effects in these patients, requires further investigation.

Limitations

This study is subject to the limitations associated with a retrospective, observational design. To include a large proportion of patients, a



Number at risk		0	12	24	36	48	60	72	84	96	108	120
—	MR non-improvers	140	117	108	97	89	80	70	60	50	42	28
—	MR improvers with no increase in LARS	90	87	80	72	67	60	50	42	38	33	28
—	MR improvers with increase in LARS	110	103	95	91	87	81	74	66	57	51	49

Figure 2 Kaplan–Meier curve for time to cumulative survival according to MR improvement and increase in LARS.

large time interval for patient enrollment was used. Data on changes in medical treatment during long-term follow-up were not available. LARS is a vendor-dependent parameter, and the values cannot be compared directly between different ultrasound platforms. RV systolic function was quantified with tricuspid annular plane systolic excursion, which is angle-dependent and does not account for regional differences in RV function. Although MR severity may be influenced by loading conditions, only haemodynamically stable patients were included in the present study. Quantitative measurements of MR severity were not provided. HF hospitalization, new onset atrial fibrillation or implantation of a LV assist device as an endpoint were not systematically recorded, and could not be analyzed. Moreover, the specific cause of death (cardiac or non-cardiac) was unknown in this study. However, it is less likely that CRT induced LA remodelling at 6 months after CRT would affect non-cardiovascular mortality.

Conclusion

In patients with HF and significant functional MR, an improvement in MR after CRT implantation is independently associated with an increase in LARS, which in turn, is associated with better survival.

Supplementary data

Supplementary data are available at *European Heart Journal - Cardiovascular Imaging* online.

Funding

J.S. received funding from the European Society of Cardiology (ESC training grant App000064741). K.H. received funding from the European Society of Cardiology (ESC research grant R-2018-181220).

Conflict of interest: The Department of Cardiology, Heart Lung Center, Leiden University Medical Centre received research grants

from Abbott Vascular, Bayer, Biotronik, Bioentrix, Boston Scientific, Edwards Lifesciences, GE Healthcare, Ionis and Medtronic. N.A.M. received speaker fees from Abbott Vascular and GE Healthcare. J.J.B. received speaker fees from Abbott Vascular. The remaining authors have nothing to disclose.

Data availability

The data underlying this article will be shared on reasonable request to the corresponding author.

References

- Cipriani M, Lunati M, Landolina M, Proclemer A, Boriani G, Ricci RP et al. Prognostic implications of mitral regurgitation in patients after cardiac resynchronization therapy. *Eur J Heart Fail* 2016;**18**:1060–8.
- Goliasch G, Bartko PE, Pavo N, Neuhold S, Wurm R, Mascherbauer J et al. Refining the prognostic impact of functional mitral regurgitation in chronic heart failure. *Eur Heart J* 2018;**39**:39–46.
- Her AY, Choi EY, Shim CY, Song BW, Lee S, Ha JW et al. Prediction of left atrial fibrosis with speckle tracking echocardiography in mitral valve disease: a comparative study with histopathology. *Korean Circ J* 2012;**42**:311–8.
- Zivlas C, Triposkiadis F, Psarras S, Giamouzis G, Skoularigis I, Chryssanthopoulos S et al. Left atrial volume index in patients with heart failure and severely impaired left ventricular systolic function: the role of established echocardiographic parameters, circulating cystatin C and galectin-3. *Ther Adv Cardiovasc Dis* 2017;**11**:283–95.
- Sugimoto T, Bandera F, Generati G, Alfonzetti E, Barletta M, Losito M et al. Left atrial dynamics during exercise in mitral regurgitation of primary and secondary origin: pathophysiological insights by exercise echocardiography combined with gas exchange analysis. *JACC Cardiovasc Imaging* 2020;**13**(Pt 1):25–40.
- Carluccio E, Biagioli P, Mengoni A, Francesca Cerasa M, Lauciello R, Zuchi C et al. Left atrial reservoir function and outcome in heart failure with reduced ejection fraction. *Circ Cardiovasc Imaging* 2018;**11**:e007696.
- Stassen J, Namazi F, van der Bijl P, van Wijngaarden SE, Kamperidis V, Marsan NA et al. Left atrial reservoir function and outcomes in secondary mitral regurgitation. *J Am Soc Echocardiogr* 2022;**35**:477–85.
- McDonagh TA, Metra M, Adamo M, Gardner RS, Baumbach A, Böhm M et al. 2021 ESC guidelines for the diagnosis and treatment of acute and chronic heart failure. *Eur Heart J* 2021;**42**:3599–726.
- van der Bijl P, Khidir M, Ajmone Marsan N, Delgado V, Leon MB, Stone GW et al. Effect of functional mitral regurgitation on outcome in patients receiving cardiac resynchronization therapy for heart failure. *Am J Cardiol* 2019;**123**:75–83.

10. Yu CM, Fang F, Zhang Q, Yip GW, Li CM, Chan JY *et al*. Improvement of atrial function and atrial reverse remodeling after cardiac resynchronization therapy for heart failure. *J Am Coll Cardiol* 2007;**50**:778–85.
11. Fung JW, Yip GW, Zhang Q, Fang F, Chan JY, Li CM *et al*. Improvement of left atrial function is associated with lower incidence of atrial fibrillation and mortality after cardiac resynchronization therapy. *Heart rhythm* 2008;**5**:780–6.
12. Stassen J, Galloo X, Chimed S, Hirasawa K, Marsan NA, Delgado V *et al*. Clinical implications of left atrial reverse remodelling after cardiac resynchronization therapy. *Eur Heart J Cardiovasc Imaging* 2022;**23**:730–40.
13. Lang RM, Badano LP, Mor-Avi V, Afilalo J, Armstrong A, Ernande L *et al*. Recommendations for cardiac chamber quantification by echocardiography in adults: an update from the American Society of Echocardiography and the European Association of Cardiovascular Imaging. *J Am Soc Echocardiogr* 2015;**1**:1–39.e14.
14. Zoghbi WA, Adams D, Bonow RO, Enriquez-Sarano M, Foster E, Grayburn PA *et al*. Recommendations for noninvasive evaluation of native valvular regurgitation: a report from the American Society of Echocardiography developed in collaboration with the Society for Cardiovascular Magnetic Resonance. *J Am Soc Echocardiogr* 2017;**30**:303–71.
15. Negishi K, Negishi T, Kurosawa K, Hristova K, Popescu BA, Vinereanu D *et al*. Practical guidance in echocardiographic assessment of global longitudinal strain. *JACC Cardiovasc Imaging* 2015;**8**:489–92.
16. Badano LP, Kolias TJ, Muraru D, Abraham TP, Aurigemma G, Edvardsen T *et al*. Standardization of left atrial, right ventricular, and right atrial deformation imaging using two-dimensional speckle tracking echocardiography: a consensus document of the EACVI/ASE/industry task force to standardize deformation imaging. *Eur Heart J Cardiovasc Imaging* 2018;**19**:591–600.
17. Kuppahally SS, Akoum N, Burgon NS, Badger TJ, Kholmovski EG, Vijayakumar S *et al*. Left atrial strain and strain rate in patients with paroxysmal and persistent atrial fibrillation: relationship to left atrial structural remodeling detected by delayed-enhancement MRI. *Circ Cardiovasc Imaging* 2010;**3**:231–9.
18. Yiu SF, Enriquez-Sarano M, Tribouilloy C, Seward JB, Tajik AJ. Determinants of the degree of functional mitral regurgitation in patients with systolic left ventricular dysfunction: a quantitative clinical study. *Circulation* 2000;**102**:1400–6.
19. Breithardt OA, Sinha AM, Schwammenthal E, Bidaoui N, Markus KU, Franke A *et al*. Acute effects of cardiac resynchronization therapy on functional mitral regurgitation in advanced systolic heart failure. *J Am Coll Cardiol* 2003;**41**:765–70.
20. Ypenburg C, Lancellotti P, Tops LF, Boersma E, Bleeker GB, Holman ER *et al*. Mechanism of improvement in mitral regurgitation after cardiac resynchronization therapy. *Eur Heart J* 2008;**29**:757–65.
21. St John Sutton MG, Plappert T, Abraham WT, Smith AL, DeLurgio DB, Leon AR *et al*. Effect of cardiac resynchronization therapy on left ventricular size and function in chronic heart failure. *Circulation* 2003;**107**:1985–90.
22. van Bommel RJ, Marsan NA, Delgado V, Borleffs CJ, van Rijnsoever EP, Schalij MJ *et al*. Cardiac resynchronization therapy as a therapeutic option in patients with moderate-severe functional mitral regurgitation and high operative risk. *Circulation* 2011;**124**:912–9.
23. Sugimoto T, Bandera F, Generati G, Alfonzetti E, Bussadori C, Guazzi M. Left atrial function dynamics during exercise in heart failure: pathophysiological implications on the right heart and exercise ventilation inefficiency. *JACC Cardiovasc Imaging* 2017;**10**(10 Pt B):1253–64.
24. Mogensen UM, Jhund PS, Abraham WT, Desai AS, Dickstein K, Packer M, *et al*. Type of atrial fibrillation and outcomes in patients with heart failure and reduced ejection fraction. *J Am Coll Cardiol* 2017;**70**:2490–500.
25. Cameli M, Sparla S, Losito M, Righini FM, Mencì D, Lisi M *et al*. Correlation of left atrial strain and Doppler measurements with invasive measurement of left ventricular End-diastolic pressure in patients stratified for different values of ejection fraction. *Echocardiography* 2016;**33**:398–405.
26. Brenyo A, Link MS, Barshesht A, Moss AJ, Zareba W, Wang PJ, *et al*. Cardiac resynchronization therapy reduces left atrial volume and the risk of atrial tachyarrhythmias in MADIT-CRT (multicenter automatic defibrillator implantation trial with cardiac resynchronization therapy). *J Am Coll Cardiol* 2011;**58**:1682–9.
27. Valzania C, Gadler F, Boriani G, Rapezzi C, Eriksson MJ. Effect of cardiac resynchronization therapy on left atrial size and function as expressed by speckle tracking 2-dimensional strain. *Am J Cardiol* 2016;**118**:237–43.
28. Dokuni K, Matsumoto K, Tatsumi K, Suto M, Tanaka H, Fukuzawa K *et al*. Cardiac resynchronization therapy improves left atrial reservoir function through resynchronization of the left atrium in patients with heart failure with reduced ejection fraction. *Int J Cardiovasc Imaging* 2020;**36**:1203–12.
29. Mălăescu GG, Mirea O, Capotă R, Petrescu AM, Duchenne J, Voigt JU. Left atrial strain determinants during the cardiac phases. *JACC Cardiovasc Imaging* 2022;**15**:381–91.
30. Galli E, Oger E, Aalen JM, Duchenne J, Larsen CK, Sade E, *et al*. Left atrial strain is a predictor of left ventricular systolic and diastolic reverse remodelling in CRT candidates. *Eur Heart J Cardiovasc Imaging* 2021. Online ahead of print.
31. Deferm S, Martens P, Verbrugge FH, Bertrand PB, Dauw J, Verhaert D *et al*. LA Mechanics in decompensated heart failure: insights from strain echocardiography with invasive hemodynamics. *JACC Cardiovasc Imaging* 2020;**13**:1107–15.
32. Verheule S, Wilson E, Everett T, Shanbhag S, Golden C, Olgin J. Alterations in atrial electrophysiology and tissue structure in a canine model of chronic atrial dilatation due to mitral regurgitation. *Circulation* 2003;**107**:2615–22.