



Universiteit
Leiden
The Netherlands

Computed tomography-based preoperative muscle measurements as prognostic factors for anastomotic leakage following oncological sigmoid and rectal resections

Kooten, R.T. van; Ravensbergen, C.J.; Bueseck, S.C.D. van; Grootjans, W.; Peeters, K.C.M.J.; Holman, F.A.; ... ; Tollenaar, R.A.E.M.

Citation

Kooten, R. T. van, Ravensbergen, C. J., Bueseck, S. C. D. van, Grootjans, W., Peeters, K. C. M. J., Holman, F. A., ... Tollenaar, R. A. E. M. (2023). Computed tomography-based preoperative muscle measurements as prognostic factors for anastomotic leakage following oncological sigmoid and rectal resections. *Journal Of Surgical Oncology*, 127(5), 823-830. doi:10.1002/jso.27200



Version: Publisher's Version

License: [Creative Commons CC BY-NC-ND 4.0 license](https://creativecommons.org/licenses/by-nc-nd/4.0/)

Downloaded from: <https://hdl.handle.net/1887/3566905>

Note: To cite this publication please use the final published version (if applicable).

Computed tomography-based preoperative muscle measurements as prognostic factors for anastomotic leakage following oncological sigmoid and rectal resections

Robert T. van Kooten MD¹  | Cor J. Ravensbergen BSc¹ |
 Sophie C. D. van Büseck BSc¹ | Willem Grootjans PhD² |
 Koen C. M. J. Peeters MD, PhD¹ | Fabian A. Holman MD, PhD¹ |
 Jan W. T. Heemskerk PhD² | Michel W. J. M. Wouters MD, PhD^{3,4}  |
 Ana Navas Cañete MD² | Rob A. E. M. Tollenaar MD, PhD¹

¹Department of Surgery, Leiden University Medical Center, Leiden, The Netherlands

²Department of Radiology, Leiden University Medical Center, Leiden, The Netherlands

³Department of Biomedical Data Sciences, Leiden University Medical Center, Leiden, The Netherlands

⁴Department of Surgery, Netherlands Cancer Institute-Antoni van Leeuwenhoek, Amsterdam, The Netherlands

Correspondence

Robert T. van Kooten, Department of Surgery, Leiden University Medical Center, Albinusdreef 2, J10-71, 2333 ZA Leiden, The Netherlands.
 Email: R.T.van_Kooten@lumc.nl

Abstract

Background: Oncological sigmoid and rectal resections are accompanied with substantial risk of anastomotic leakage. Preoperative risk assessment and patient selection remain difficult, highlighting the importance of finding easy-to-use parameters. This study evaluates the prognostic value of contrast-enhanced (CE) computed tomography (CT)-based muscle measurements for predicting anastomotic leakage.

Methods: Patients that underwent oncological sigmoid and rectal resections in the LUMC between 2016 and 2020 were included. Preoperative CE-CT scans, were analyzed using Vitrea software to measure total abdominal muscle area (TAMA) and total psoas area (TPA). Muscle areas were standardized using patient's height into: psoas muscle index (PMI) and skeletal muscle index (SMI) (cm²/m²).

Results: In total 46 patients were included, of which 13 (8.9%) suffered from anastomotic leakage. Patients with anastomotic leakage had a significantly lower PMI (22.1 vs. 25.1, $p < 0.01$) and SMI (41.8 vs. 46.6, $p < 0.01$). After adjusting for confounders (age and comorbidity), lower PMI (odds ratio [OR]: 0.85, 95% confidence interval [CI] 0.71–0.99, $p = 0.03$) and SMI (OR: 0.93, 95%CI 0.86–0.99, $p = 0.02$) were both associated with anastomotic leakage.

Conclusion: This study showed that lower PMI and SMI were associated with anastomotic leakage. These results indicate that preoperative CT-based muscle measurements can be used as prognostic factor for risk stratification for anastomotic leakage.

Abbreviations: ASA, American Society of Anesthesiology; AUC, area under the curve; BMI, body mass index; CE, contrast enhanced; CRT, chemoradiotherapy; CT, computed tomography; LAR, low-anterior resection; OR, odds ratio; PMI, Psoas Muscle Index; ROC, receiver operating characteristics; ROI, region of interest; SMI, Skeletal Muscle Index; TAMA, total abdominal muscle area; TPA, Total Psoas Area.

This is an open access article under the terms of the Creative Commons Attribution-NonCommercial-NoDerivs License, which permits use and distribution in any medium, provided the original work is properly cited, the use is non-commercial and no modifications or adaptations are made.

© 2023 The Authors. *Journal of Surgical Oncology* published by Wiley Periodicals LLC.

KEYWORDS

cancer, colorectal surgery, musculoskeletal system, sarcopenia

1 | INTRODUCTION

Rectosigmoid resections are associated with a high risk of postoperative complications causing morbidity and mortality.^{1,2} Major complications occur in 15%–18% of the patients, with anastomotic leakage being the most frequent with an incidence of up to 10%.^{3–5} However, risk stratification is challenging, given that multiple studies have shown that a wide variety of factors correlate with risk of postoperative complications.⁶ This highlights the importance of accurate prediction models, that use robust clinical parameters to assess frailty and the associated surgical risk for these patients.^{6,7} This is particularly important given that, with the increasing age of patients undergoing this type of surgery, the number of frail older adult patients increases.⁸ Preoperative selection of frail patients and subsequent targeted interventions, such as physical prehabilitation programs, have been shown to be potentially beneficial, leading to a reduction of postoperative complication rates.^{9–11}

Recently, some studies are reporting that skeletal muscle and psoas muscle volumes can be used as a proxy for patient frailty.⁷ Low skeletal muscle volume or psoas muscle volume is defined as sarcopenia, which can be relatively easily assessed using computed tomography (CT). Studies have shown that CT-based measurements of abdominal muscles, including the psoas muscle, have the potential in predicting adverse outcome in surgical patients.^{12,13}

This study explores the potential prognostic value and clinical use of CT-based preoperative muscle measurements, such as skeletal muscle index (SMI) and psoas muscle index (PMI), in an attempt to predict anastomotic leakage after oncological rectosigmoid resections.

2 | METHODS

2.1 | Study population and treatment

All patients who underwent sigmoid or rectal resection for primary colorectal cancer in the Leiden University Medical Center (LUMC) between January 2016 and December 2020 were retrospectively included in this study. Exclusion criteria were: (temporary) construction of stoma during primary surgery, emergency surgery, palliative intended surgery, distant metastasis at time of diagnosis of the primary tumor, and endoscopic resection. Patient characteristics (e.g., age and comorbidity) and clinical data (e.g., type of surgery and complications) were collected from the electronic medical record and the LUMC cancer registry. This study was approved by the Medical Ethics Committee of the LUMC (ID number G21.093).

2.2 | CT-based measurements

All included patients had a preoperative contrast-enhanced (CE) abdominal CT in portal venous phase of no more than 3 months before surgery. Analysis of CT-scans was performed using Vitrea (version 7.14.2.227, Canon Medical). Muscle areas were determined by manually segmenting a region of interest (ROI) in the skeletal- and psoas muscles on the portovenous phase of the CE-CT images. The CT slice at the level of the inferior part of L3 was chosen for analysis, which is conform the criteria of previous studies.^{7,13} Subsequently, the skeletal muscles and psoas muscle areas determined from the segmented ROIs (mm²),^{7,13,14}

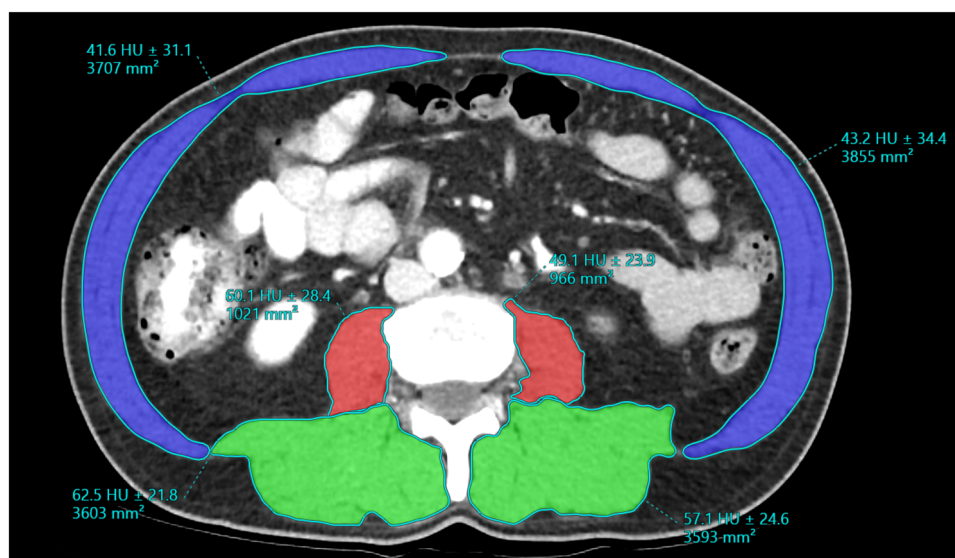


FIGURE 1 Example Vitrea software for contrast-enhanced (CE) computed tomography (CT)-based muscle measurements. Regions of interest (ROI) were drawn and categorized into specific muscle groups; psoas muscles (Red), back muscles (erector spinae and quadratus lumborum muscles) (Green), lateral muscle (external- and internal oblique and transversus abdominis) and rectus abdominis (Blue).

Total abdominal muscle area (TAMA) was categorized into specific abdominal muscle groups; psoas muscles, back muscles (erector spinae and quadratus lumborum muscles), lateral muscle (external- and internal oblique and transversus abdominis) and rectus abdominis (Figure 1). Additionally, total psoas area (TPA) was calculated by the sum of both psoas muscles. Two researchers (RTK and CJR) independently performed the image segmentation after ensuring an interobserver variability correlation of at least 0.8 in a training set, under supervision of a radiologist (ANC). Disagreements regarding measurements were resolved by discussion, with ANC acting as a third observer when necessary. The muscle areas were adjusted by patient's height (m) to standardize the measurement between patients. The height-normalized muscle areas (muscle indices) of the psoas and skeletal muscles (TAMA), PMI and SMI were used for further analysis. The units for muscle areas were cm^2 and muscle indexes, cm^2/m^2 .

2.3 | Anastomotic leakage

All complications that occurred during 90 days after surgery were registered and reviewed. Anastomotic leakage was defined as a defect of the intestinal wall or abscess at the site of the colorectal anastomosis, diagnosed or confirmed by contrast enema, furthermore, an abscess around the anastomosis, for which endoscopic, percutaneous or operative re-intervention was required.

2.4 | Statistical analysis

Odds ratios (OR) with 95% confidence intervals and p -values were reported for each variable to assess the impact of all patient- and treatment characteristics, multivariable analysis was conducted using clinically-relevant variables. Mann-Whitney U and chi-squared test were used to assess patient- and treatment characteristics. A p -value of <0.05 was considered statistically significant. The Spearman's ρ correlation coefficient was used to assess interobserver variability in CT muscle surface area scoring. To show clinical use of CE CT-based muscle parameters, nomograms were constructed based on a regression model using the rms package in R. The predictive strength of the prediction models used to construct the nomograms was measured by the Area Under the Receiver Operating Characteristics (ROC) Curve (AUC). All analyses were done using R version 4.1.2 in RStudio. ROC curves and AUC scores were calculated using the pROC package, plots were made using the ggplot2 package.

3 | RESULTS

3.1 | Patient characteristics

A total of 215 patients underwent a sigmoid or rectal resection between 2016 and 2020 of which 48 were excluded because a CT scan was not present (Figure 2). Additionally, patients with

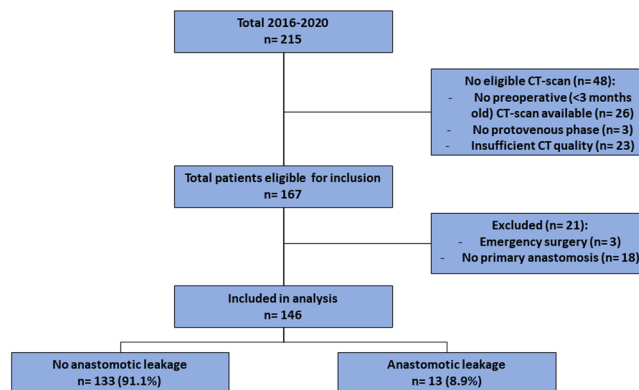


FIGURE 2 Flowchart of patient inclusion.

TABLE 1 Patient characteristics

	No anastomotic leakage n = 133 (91.1%)	Anastomotic leakage n = 13 (8.9%)	p -value
Age (median)	59 (50–71)	68 (37–86)	<0.01
Gender (male)	80 (60.2%)	5 (38.5%)	0.22
ASA score			0.95
1–2	26 (19.5%)	3 (23.1%)	
3–4	12 (9.0%)	10 (76.9%)	
Comorbidity	74 (55.6%)	10 (76.9%)	0.24
BMI (median)	25.0 (19.5–41.3)	25.9 (17.5–34.7)	0.93
pT-stage			0.69
0	1 (0.8%)	0 (0.0%)	
1–2	58 (43.6%)	6 (46.2%)	
3–4	74 (55.6%)	7 (53.8%)	
pN-stage			0.74
0	81 (60.9%)	9 (69.2%)	
≥ 1	52 (39.1%)	4 (30.8%)	
Neo-adjuvant chemoradiotherapy (CRT)	23 (17.3%)	4 (30.8%)	0.41
Type of surgery			0.25
Low-anterior resection (LAR)	64 (48.1%)	9 (69.2%)	
Sigmoid resection	69 (51.9%)	4 (30.8%)	
Minimally invasive			<0.01
Open	4 (3.0%)	2 (15.4%)	
Laparoscopic	129 (97.0%)	11 (84.6%)	

emergency surgery ($n = 3$) and patients with stoma construction during primary surgery ($n = 18$) were excluded. Of the in total 146 included patients, 13 (8.9%) suffered from anastomotic leakage. There was a significant difference between the group of patients

TABLE 2 Interobserver variability: The Spearman's ρ correlation coefficient

	Coefficient	p-value
Total Abdominal Muscle Area (TAMA)	0.99	<0.01
Total Psoas Area (TPA)	0.95	0.01
Psoas left	0.89	0.04
Psoas right	0.87	0.05
Psoas Muscle Index (PMI)	0.91	0.03
Skeletal Muscle Index (SMI)	0.99	<0.01

that suffered from anastomotic leakage and the group that did not with respect to age and the use of minimally invasive techniques (Table 1). There were no significant differences observed in comorbidities.

3.2 | CT-based measurements

Results showed that the manual segmentation (Figure 1) of the muscles on CT images were highly reproducible, with the Spearman's ρ correlation coefficient >0.87. (Table 2).

TABLE 3 Preoperative contrast-enhanced (CE) computed tomography (CT) muscle measurements

	No anastomotic leakage n = 133 (91.1%)	Anastomotic leakage n = 13 (8.9%)	p-value
Total Psoas Area (TPA) (cm ²) (median)	77.5 (37.7–196.3)	59.6 (39.7–101.4)	0.01
Total Abdominal Muscle Area (TAMA) (cm ²) (median)	144.2 (70.1–377.1)	111.8 (73.8–191.1)	0.02
Psoas Muscle Index (PMI) (cm ² /m ²) (mean)	25.05 (14.7–64.1)	22.1 (14.2–28.7)	<0.01
Skeletal Muscle Index (SMI) (cm ² /m ²) (mean)	46.6 (27.0–123.1)	41.8 (26.5–54.1)	<0.01

TABLE 4 Logistic regression analysis odds ratio (OR) for anastomotic leakage

	OR	p-value	Adjusted OR*	p-value
Age	1.07 (1.01–1.13)	0.02	–	
Sex (male)	0.41 (0.13–1.33)	0.14		
ASA score**			–	
1	Ref	–	Ref	
2	0.82 (0.21–3.25)	0.78	0.99 (0.21–4.56)	0.99
3	0.72 (0.07–7.68)	0.79	0.81 (0.06–10.34)	0.87
Comorbidity	2.58 (0.68–9.79)	0.16	–	
Type of surgery				
Low Anterior Resection (LAR)	Ref	–	Ref	
Sigmoid resection	0.63 (0.18–2.15)	0.46	0.45 (0.12–1.62)	0.21
T-stage				
1	Ref	–	–	
2	0.56 (0.1–3.6)	0.57	0.33 (0.05–2.41)	0.28
3	0.47 (0.08–2.68)	0.42	0.28 (0.04–1.99)	0.21
4	1.62 (0.19–13.93)	0.66	0.78 (0.08–8.18)	0.84
Neoadjuvant therapy	2.13 (0.60–7.50)	0.24	1.43 (0.37–5.51)	0.61
BMI	0.99 (0.86–1.14)	0.90	0.97 (0.84–1.11)	0.66
Psoas Muscle Index (PMI)	0.87 (0.77–0.99)	0.03	0.85 (0.71–0.99)	0.03
Skeletal Muscle Index (SMI)	0.94 (0.88–0.99)	0.04	0.93 (0.86–0.99)	0.02

*Adjusted for age, comorbidity,

**ASA, American Society of Anesthesiologists.

3.2.1 | Muscle measurements

Patients that suffered anastomotic leakage had significantly lower preoperative TPA (median: 77.5 cm² vs. 59.6 cm², $p = 0.02$) and lower TAMA (median: 144.2 cm² vs. 111.8 cm², $p = 0.01$) (Table 3). Additionally, comparing the PMI and SMI between both groups, both parameters were significantly lower in the anastomotic leakage groups ($p < 0.01$).

3.2.2 | Uni- and multivariable analysis

A higher age (OR: 1.07, 95% CI 1.01–1.13, $p = 0.02$) and lower PMI (OR: 0.87, 95% CI 0.77–0.99, $p = 0.03$) and SMI (OR: 0.94, 95% CI 0.88–0.99, $p = 0.04$) were in univariable analysis significantly associated with anastomotic leakage (Table 4). After adjusting for confounders (age and comorbidity), a lower PMI (OR: 0.85, 95% CI 0.71–0.99, $p = 0.03$) and SMI (OR: 0.93, 95% CI 0.86–0.99, $p = 0.02$) were both significantly associated with the occurrence of anastomotic leakage.

3.3 | Nomograms

For preoperative prediction of anastomotic leakage regression model-based prediction models, using clinically- and statistically relevant parameters (age, gender, comorbidity, chemoradiotherapy, and SMI or PMI), were made. The prediction model using PMI had an AUC of 79.8% (Figure 3A) and using SMI as muscle parameter had an AUC of 79.0% (Figure 3B), respectively. Additionally, clinically usable nomograms were constructed using these prediction models with using PMI (Figure 4A) as muscle parameter and one using SMI (Figure 4B).

4 | DISCUSSION

This study investigated the value of CT-based cross-sectional measurements of abdominal and psoas muscles as a prognostic factor for anastomotic leakage after curative intended oncological sigmoid or rectal resection. Cross-sectional measured abdominal and psoas muscle area were significantly lower in patients that suffered from anastomotic leakage. Furthermore, both PMI and SMI are both prognostic factors for anastomotic leakage following sigmoid and rectal resection.

Recent studies have shown an association between lower muscle volumes and short-term surgical outcomes after colorectal surgery.^{7,12,13} Literature reports that cross-sectional lumbar muscle areas are well correlated with muscle mass in the whole body.^{15,16} However, analysis of CT images using a single-muscle approach such as the psoas major muscle, might be less laborious and therefore more realistic in a clinical setting, validation is, however, still lacking.¹⁷ As shown by Jones et al.,⁷ TPA and TAMA on the L3 level

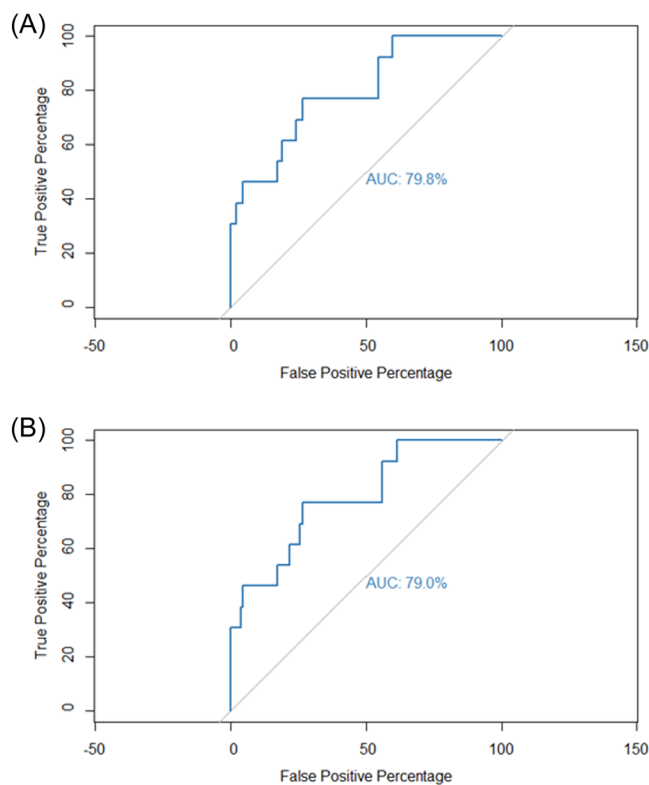


FIGURE 3 Receiver operating characteristics (ROC) curve of logistic regression predictions model used to construct nomogram (A) using psoas muscle index (PMI) as muscle parameter, (B) using skeletal muscle index (SMI) as muscle parameter.

correlates well with clinical outcomes.⁷ However, these reports also showed that TAMA was more reproducibly measured by CT analysis than TPA. This is also observed in our study as the interobserver variability is higher in the TPA.

The association between low muscle mass and anastomotic leakage might be partly explained by frailty, since previous studies have shown an association between frailty and anastomotic leakage following colorectal surgery as well.^{7,18,19} However, there is no consensus on markers for determining patient frailty at this time, and identification of frail patients is still difficult.^{20,21}

Skeletal muscle depletion is defined as a decrease in muscle mass, and it occurs when protein degradation exceeds protein synthesis. Potential causes of muscle atrophy are ageing, malnutrition, long-term immobilization, as well as various serious and often chronic diseases, such as chronic heart failure, chronic obstructive lung disease, renal failure, AIDS, sepsis, anorexia nervosa, and muscular dystrophies among others. Furthermore, skeletal muscle depletion may be the result from cancer too, as part of the cancer-cachexia syndrome.^{22–24} Cancer cachexia is a wasting syndrome characterized by weight loss, anorexia, asthenia, and anemia. The pathogenicity of this syndrome is multifactorial, due to a complex interaction of tumor and host factors leading to muscle protein breakdown, thus to cachexia-related sarcopenia.^{23,25} Several studies have shown a clear correlation between lower muscle mass

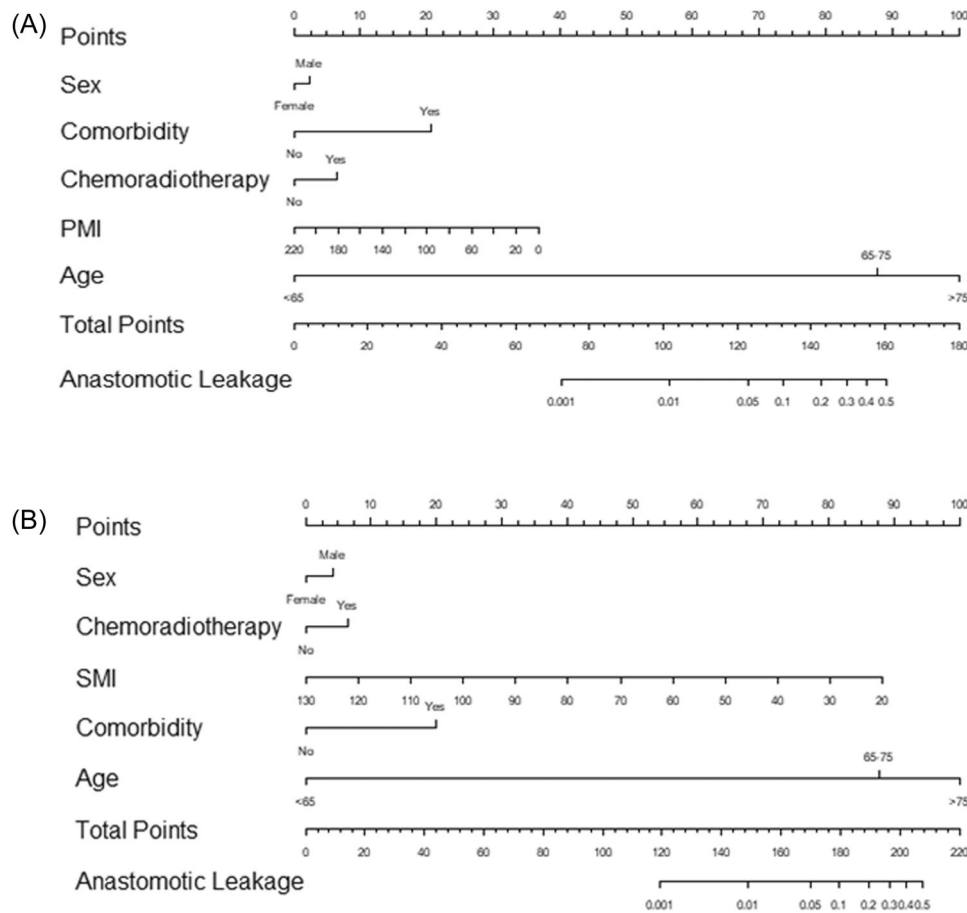


FIGURE 4 Nomogram prediction the risk of anastomotic leakage constructed using logistic regression model. (A) Using psoas muscle index (PMI) as muscle parameter, the model had an area under the curve (AUC) of 79.8% (Figure 3A) (B) using skeletal muscle index (SMI) as muscle parameter, the model had an AUC of 79.0% (Figure 3B).

and an increased inflammatory state due to tumor cachexia and frailty.^{26,27} This might explain the association between sarcopenia and anastomotic leakage as well since a more katabolic and inflammatory state may hamper healing capacity in tissues such as bowel tissue resulting in anastomotic leakage.^{28,29}

Additionally, aging in patients might explain this association, since CT-based muscle measurement may be more accurate than just age since it is more representative for biological age compared with calendar age. Ageing leads to trunk muscle attenuation, but such age-related differences vary widely between muscle groups.³⁰ Thicknesses of rectus abdominis, internal oblique, and external oblique muscles were 36%–48% smaller for older than younger adults.³¹ Additionally, trunk muscle deficits with increasing age may have important implications for physical function, disability, pain, and risk of injury in older adults.³²

Accurate prediction of postoperative complications and especially anastomotic leakage could improve preoperative patient selection, treatment decision and shared-decision making. An important dilemma in patients undergoing sigmoid or rectal resection is whether or not to construct an anastomosis and/or (temporary) stoma.³³ An important consideration is the risk of anastomotic

leakage since a (temporary) diverting stoma can reduce the rate of clinical symptomatic anastomotic leakage.^{6,34} Furthermore, measuring a low muscle mass on the preoperative CE-CT could be an indication for prehabilitation programs, since low muscle mass may be reversible.^{9,11,35} Especially, in rectal cancer patients undergoing neo-adjuvant chemo(radio)therapy, there is a greater window of preoperative optimization by physical exercise, which has been shown to be safe and feasible.³⁶ Prehabilitation programs have been shown to objectively improve physical fitness.³⁷ Additionally, since patients with lower skeletal muscle mass may experience more chemotherapy toxicity, this might be used in shared decision-making and treatment planning as well.^{38,39}

4.1 | Limitations

Although this study provides insights in the used of CT-based muscle measurements, this study has some limitations. Since, patients included in this study were selected to be fit for surgery by expert opinion, this may lead to allocation bias. Additionally, some patients were excluded because of unavailability of CT examinations or insufficient quality. However, the

occurrence allocation bias is unavoidable in this type of retrospective study. Due to the relatively low sample size an validation of the prediction models was not possible. Furthermore, this was a single-center study in an academic teaching hospital where comorbidity/competing risks were possibly not fully known by applied comorbidity classification, this affect generalizability.

5 | CONCLUSION

In this exploratory analysis, low SMI and PMI were predictive for anastomotic leakage and show potential in treatment planning, shared decision making and engaging in prehabilitation programs. Since abdominal CT scans are routinely being performed for preoperative staging and treatment planning, they can easily be used to quantify muscle volumes without additional examinations or costs.

ACKNOWLEDGMENTS

This research was supported by the Leiden University Medical Center (LUMC).

CONFLICTS OF INTEREST

The authors declare no conflicts of interest.

DATA AVAILABILITY STATEMENT

The data that support the findings of this study are available on request from the corresponding author. The data are not publicly available due to privacy or ethical restrictions.

ORCID

Robert T. van Kooten  <http://orcid.org/0000-0001-9633-7289>

Michel W. J. M. Wouters  <http://orcid.org/0000-0001-6173-0662>

REFERENCES

- Detering R, Roodbeen SX, van Oostendorp SE, et al. Three-year nationwide experience with transanal total mesorectal excision for rectal cancer in the Netherlands: a propensity score-matched comparison with conventional laparoscopic total mesorectal excision. *J Am Coll Surg*. 2019;228(3):235-244.
- Larson DW, et al. Additional value of preoperative albumin for surgical risk stratification among colorectal cancer patients. *Ann Nutr Metab*. 2021;1-9.
- Rutegård M, et al. Exposure to oestrogen and risk of anastomotic leakage after colorectal cancer surgery - a clue to the different leak rates in men and women. *Colorectal Dis*. 2022.
- Giesen LJX, Dekker JWT, Verseveld M, et al. Implementation of robotic rectal cancer surgery: a cross-sectional nationwide study. *Surg Endosc*. 2022.
- Tilney HS, Huddy JR, Nizar AS, Smith R, Gudgeon AM. Minimal access rectal cancer surgery: an observational study of patient outcomes from a district general hospital with over a decade of experience with robotic rectal cancer surgery. *Colorectal Disease*. 2021;23(8):1961-1970.
- van Kooten RT, Bahadoer RR, Peeters KCMJ, et al. Preoperative risk factors for major postoperative complications after complex gastrointestinal cancer surgery: a systematic review. *Eur J Surg Oncol*. 2021;47(12):3049-3058.
- Jones KI, Doleman B, Scott S, Lund JN, Williams JP. Simple psoas cross-sectional area measurement is a quick and easy method to assess sarcopenia and predicts major surgical complications. *Colorectal Disease*. 2015;17(1):O20-O26.
- Fielding RA, Vellas B, Evans WJ, et al. Sarcopenia: an undiagnosed condition in older adults. current consensus definition: prevalence, etiology, and consequences. International working group on sarcopenia. *J Am Med Dir Assoc*. 2011;12(4):249-256.
- Barberan-Garcia A, Ubré M, Roca J, et al. Personalised prehabilitation in high-risk patients undergoing elective major abdominal surgery: a randomized blinded controlled trial. *Ann Surg*. 2018;267(1):50-56.
- van der Hulst HC, Bastiaannet E, Portielje JEA, van der Bol JM, Dekker JWT. Can physical prehabilitation prevent complications after colorectal cancer surgery in frail older patients? *Eur J Surg Oncol*. 2021;47(11):2830-2840.
- Bruns ERJ, van den Heuvel B, Buskens CJ, et al. The effects of physical prehabilitation in elderly patients undergoing colorectal surgery: a systematic review. *Colorectal Disease*. 2016;18(8):267-277.
- van Vugt JLA, Coebergh van den Braak RRJ, Lalmahomed ZS, et al. Impact of low skeletal muscle mass and density on short and long-term outcome after resection of stage I-III colorectal cancer. *Eur J Surg Oncol*. 2018;44(9):1354-1360.
- Looijaard SMLM, Maier AB, Voskuilen AF, et al. Are computed tomography-based measures of specific abdominal muscle groups predictive of adverse outcomes in older cancer patients? *Heliyon*. 2020;6(11):e05437.
- Bahat G, Turkmen BO, Aliyev S, Catikkas NM, Bakir B, Karan MA. Cut-off values of skeletal muscle index and psoas muscle index at L3 vertebra level by computerized tomography to assess low muscle mass. *Clin Nutr*. 2021;40(6):4360-4365.
- Holt DQ, Strauss BJG, Lau KK, Moore GT. Body composition analysis using abdominal scans from routine clinical care in patients with Crohn's disease. *Scand J Gastroenterol*. 2016;51(7):842-847.
- Mourtzakis M, Prado CMM, Lieffers JR, Reiman T, McCargar LJ, Baracos VE. A practical and precise approach to quantification of body composition in cancer patients using computed tomography images acquired during routine care. *Applied Physiol, Nutr, Metab*. 2008;33(5):997-1006.
- Baracos VE. Psoas as a sentinel muscle for sarcopenia: a flawed premise. *J Cachexia Sarcopenia Muscle*. 2017;8(4):527-528.
- Sparreboom CL, Groningen JT, Lingsma HF, et al. Different risk factors for early and late colorectal anastomotic leakage in a nationwide audit. *Dis Colon Rectum*. 2018;61(11):1258-1266.
- Diers J, et al. Disproportionately high failure to rescue rates after resection for colorectal cancer in the geriatric patient population - A nationwide study. *Cancer Med*. 2022.
- Hartmann A, Hartmann C, Secci R, Hermann A, Fuellen G, Walter M. Ranking biomarkers of aging by citation profiling and effort scoring. *Front Genet*. 2021;12:686320.
- Cardoso AL, Fernandes A, Aguilar-Pimentel JA, et al. Towards frailty biomarkers: candidates from genes and pathways regulated in aging and age-related diseases. *Ageing Res Rev*. 2018;47:214-277.
- Rolland Y, Van Kan GA, Gillette-Guyonnet S, Vellas B. Cachexia versus sarcopenia. *Curr Opin Clin Nutr Metab Care*. 2011;14(1):15-21.
- Evans WJ, Morley JE, Argilés J, et al. Cachexia: a new definition. *Clin Nutr*. 2008;27(6):793-799.
- Muliawati Y, Haroen H, and Rotty LW. Cancer anorexia - cachexia syndrome. *Acta Med Indones*. 2012;44(2):154-162.
- Muscaritoli M, Anker SD, Argilés J, et al. Consensus definition of sarcopenia, cachexia and pre-cachexia: joint document elaborated by special interest groups (SIG) "cachexia-anorexia in chronic wasting diseases" and "nutrition in geriatrics. *Clin Nutr*. 2010;29(2):154-159.

26. Richards CH, Roxburgh CSD, MacMillan MT, et al. The relationships between body composition and the systemic inflammatory response in patients with primary operable colorectal cancer. *PLoS One*. 2012;7(8):e41883.
27. Reisinger KW, Derikx JPM, van Vugt JLA, et al. Sarcopenia is associated with an increased inflammatory response to surgery in colorectal cancer. *Clin Nutr*. 2016;35(4):924-927.
28. Moyes LH, Leitch EF, McKee RF, Anderson JH, Horgan PG, McMillan DC. Preoperative systemic inflammation predicts post-operative infectious complications in patients undergoing curative resection for colorectal cancer. *Br J Cancer*. 2009;100(8):1236-1239.
29. De Magistris L, Paquette B, Orry D, et al. Preoperative inflammation increases the risk of infection after elective colorectal surgery: results from a prospective cohort. *Int J Colorectal Dis*. 2016;31(9):1611-1617.
30. Anderson DE, D'Agostino JM, Bruno AG, Demissie S, Kiel DP, Buxsein ML. Variations of CT-based trunk muscle attenuation by age, sex, and specific muscle. *J Gerontol A Biol Sci Med Sci*. 2013;68(3):317-323.
31. Cuellar WA, Wilson A, Blizzard CL, et al. The assessment of abdominal and multifidus muscles and their role in physical function in older adults: a systematic review. *Physiotherapy*. 2017;103(1):21-39.
32. Johannesdottir F, Allaire B, Anderson DE, Samelson EJ, Kiel DP, Buxsein ML. Population-based study of age- and sex-related differences in muscle density and size in thoracic and lumbar spine: the Framingham study. *Osteoporos Int*. 2018;29(7):1569-1580.
33. Algie JPA, van Kooten RT, Tollenaar RAEM, Wouters MWJM, Peeters KCMJ, Dekker JWT. Stoma versus anastomosis after sphincter-sparing rectal cancer resection; the impact on health-related quality of life. *Int J Colorectal Dis*. 2022;37:2197-2205.
34. Tan WS, Tang CL, Shi L, Eu KW. Meta-analysis of defunctioning stomas in low anterior resection for rectal cancer. *Br J Surg*. 2009;96(5):462-472.
35. Carli F, Bousquet-Dion G, Awasthi R, et al. Effect of multimodal prehabilitation vs postoperative rehabilitation on 30-day postoperative complications for frail patients undergoing resection of colorectal cancer: a randomized clinical trial. *JAMA Surgery*. 2020;155(3):233-242.
36. van Waart H, Stuiver MM, van Harten WH, et al. Recruitment to and pilot results of the PACES randomized trial of physical exercise during adjuvant chemotherapy for colon cancer. *Int J Colorectal Dis*. 2018;33(1):29-40.
37. Bolger JC, Loughney L, Tully R, et al. Perioperative prehabilitation and rehabilitation in esophagogastric malignancies: a systematic review. *Dis Esophagus*. 2019;32(9).
38. Jung HW, Kim JW, Kim JY, et al. Effect of muscle mass on toxicity and survival in patients with colon cancer undergoing adjuvant chemotherapy. *Supp Care Cancer*. 2015;23(3):687-694.
39. Barret M, Antoun S, Dalban C, et al. Sarcopenia is linked to treatment toxicity in patients with metastatic colorectal cancer. *Nutr Cancer*. 2014;66(4):583-589.

How to cite this article: Kooten RT, Ravensbergen CJ, Büseck SCD, et al. Computed tomography-based preoperative muscle measurements as prognostic factors for anastomotic leakage following oncological sigmoid and rectal resections. *J Surg Oncol*. 2023;127:823-830. doi:10.1002/jso.27200