



Universiteit  
Leiden  
The Netherlands

## Genetic evaluation of a nation-wide Dutch pediatric DCM cohort: the use of genetic testing in risk stratification

Meulen, M.H. van der; Herkert, J.C.; Boer, S.L. den; Sarvaas, G.J.D.; Blom, N.A.; Harkel, A.D.J. ten; ... ; Dalinghaus, M.

### Citation

Meulen, M. H. van der, Herkert, J. C., Boer, S. L. den, Sarvaas, G. J. D., Blom, N. A., Harkel, A. D. J. ten, ... Dalinghaus, M. (2022). Genetic evaluation of a nation-wide Dutch pediatric DCM cohort: the use of genetic testing in risk stratification. *Circulation: Genomic And Precision Medicine*, 15(5), 375-385. doi:10.1161/CIRCGEN.120.002981

Version: Publisher's Version  
License: [Creative Commons CC BY 4.0 license](https://creativecommons.org/licenses/by/4.0/)  
Downloaded from: <https://hdl.handle.net/1887/3515797>

**Note:** To cite this publication please use the final published version (if applicable).



# Genetic Evaluation of A Nation-Wide Dutch Pediatric DCM Cohort: The Use of Genetic Testing in Risk Stratification

Marijke H. van der Meulen, MD, PhD\*; Johanna C. Herkert<sup>1</sup>, MD, PhD\*; Susanna L. den Boer, MD, PhD; Gideon J. du Marchie Sarvaas<sup>1</sup>, MD; Nico A. Blom<sup>1</sup>, MD, PhD; Arend D.J. ten Harkel<sup>1</sup>, MD, PhD; Hans M.P.J. Breur<sup>1</sup>, MD, PhD; Lukas A.J. Rammeloo<sup>1</sup>, MD; Ronald B. Tanke, MD, PhD; Carlo Marcelis<sup>1</sup>, MD; Ingrid M.B.H. van de Laar<sup>1</sup>, MD, PhD; Judith M.A. Verhagen<sup>1</sup>, MD, PhD; Ronald H. Lekanne dit Deprez<sup>1</sup>, PhD; Daniela O.C.M. Barge-Schaapveld<sup>1</sup>, MD, PhD; Annette F. Baas<sup>1</sup>, MD, PhD; Arjan Sammani<sup>1</sup>, MD; Imke Christiaans<sup>1</sup>, MD, PhD; J. Peter van Tintelen<sup>1</sup>, MD, PhD; Michiel Dalinghaus<sup>1</sup>, MD, PhD

**BACKGROUND:** This study aimed to describe the current practice and results of genetic evaluation in Dutch children with dilated cardiomyopathy and to evaluate genotype-phenotype correlations that may guide prognosis.

**METHODS:** We performed a multicenter observational study in children diagnosed with dilated cardiomyopathy, from 2010 to 2017.

**RESULTS:** One hundred forty-four children were included. Initial diagnostic categories were idiopathic dilated cardiomyopathy in 67 children (47%), myocarditis in 23 (16%), neuromuscular in 7 (5%), familial in 18 (13%), inborn error of metabolism in 4 (3%), malformation syndrome in 2 (1%), and “other” in 23 (16%). Median follow-up time was 2.1 years [IQR 1.0–4.3]. Hundred-seven patients (74%) underwent genetic testing. We found a likely pathogenic or pathogenic variant in 38 children (36%), most often in *MYH7* (n = 8). In 1 patient initially diagnosed with myocarditis, a pathogenic *LMNA* variant was found. During the study, 39 patients (27%) reached study endpoint (SE: all-cause death or heart transplantation). Patients with a likely pathogenic or pathogenic variant were more likely to reach SE compared with those without (hazard ratio 2.8; 95% CI 1.3–5.8, *P* = 0.007), while transplant-free survival was significantly lower (*P* = 0.006). Clinical characteristics at diagnosis did not differ between the 2 groups.

**CONCLUSIONS:** Genetic testing is a valuable tool for predicting prognosis in children with dilated cardiomyopathy, with carriers of a likely pathogenic or pathogenic variant having a worse prognosis overall. Genetic testing should be incorporated in clinical work-up of all children with dilated cardiomyopathy regardless of presumed disease pathogenesis.

**Key Words:** cardiomyopathy, dilated ■ genetic testing ■ pediatric cardiology

Since the early 1990s, gene variants have been implicated in the pathogenesis of dilated cardiomyopathy (DCM), which is defined as systolic dysfunction and increased ventricular chamber volume. Genetic DCM was initially thought to be primarily caused by variants in genes encoding cytoskeletal and sarcomeric proteins.<sup>1–3</sup>

However, recent advances in sequencing and array-based technologies have increased our understanding of the genetic basis of DCM. In addition to genes encoding sarcomeric and cytoskeletal proteins, genes coding for transcription factors, ion channels, the nuclear membrane, and mitochondrial proteins are now also known to

Correspondence to: M. Dalinghaus, MD, PhD, Department of Pediatrics, Division of Pediatric Cardiology, Sophia Children's Hospital Erasmus University Medical Center, PO. Box 2060, 3000 CB Rotterdam, the Netherlands. E-mail m.dalinghaus@erasmusmc.nl

\*M.H. van der Meulen and J.C. Herkert are joint first authors.

Supplemental Material is available at <https://www.ahajournals.org/doi/suppl/10.1161/CIRCGEN.120.002981>.

For Sources of Funding and Disclosures, see page 384.

© 2022 The Authors. *Circulation: Genomic and Precision Medicine* is published on behalf of the American Heart Association, Inc., by Wolters Kluwer Health, Inc. This is an open access article under the terms of the [Creative Commons Attribution License](https://creativecommons.org/licenses/by/4.0/), which permits use, distribution, and reproduction in any medium, provided that the original work is properly cited.

*Circulation: Genomic and Precision Medicine* is available at [www.ahajournals.org/journal/circgen](http://www.ahajournals.org/journal/circgen)

## Nonstandard Abbreviations and Acronyms

<b>DCM</b>	dilated cardiomyopathy
<b>IEMs</b>	inborn errors of metabolism
<b>FS</b>	fractional shortening
<b>LVEDD</b>	left ventricular end-diastolic dimension
<b>NMD</b>	neuromuscular disease
<b>PCMR</b>	Pediatric Cardiomyopathy Registry
<b>SE</b>	Study endpoint
<b>HTx</b>	heart transplantation
<b>NYUPHFI</b>	New York University Pediatric Heart Failure Index
<b>ES</b>	exome sequencing
<b>NGS</b>	next-generation sequencing
<b>ACMG</b>	American College of Medical Genetics
<b>gnomAD</b>	Genome Aggregation Database
<b>P</b>	pathogenic
<b>LP</b>	likely pathogenic
<b>VUS</b>	variant of unknown significance
<b>SD</b>	standard deviation
<b>IQR</b>	interquartile range
<b>CI</b>	confidence interval

be involved in isolated DCM. In addition, >200 genes are known that underlie syndromes or inborn errors of metabolism in which DCM can be part of the phenotype.<sup>4–6</sup>

As in adult-onset cardiomyopathy, genetic testing has now been integrated into daily clinical practice in the pediatric population, and a genetic cause can be identified in up to 27%–54% of pediatric DCM patients.<sup>7–9</sup> *myosin heavy chain 7 (MYH7)* (5.1%), *vinculin (VCL)* (3.2%), and *tropomyosin 1 (TPM1)* (2.2%) are among the most frequently affected genes in children younger than 2 years of age, whereas *titin (TTN)* (10.0%), *RNA-binding motif 20 (RBM20)* (6.7%), and *troponin T2 (TNNT2)* (4.7%) are the most frequently mutated genes in the 2–18 year age group.<sup>10</sup>

The pathogenesis of pediatric DCM is a strong predictor of long-term outcome. The 5-year transplant-free survival rate is 47% in idiopathic DCM, whereas it is 73% in DCM related to myocarditis. In familial DCM, the 5-year survival rate is high (94%), but the 5-year transplantation rate is also relatively high (38%). These differences emphasize the importance of establishing the genetic cause in DCM, as it may help further guide optimal treatment.<sup>11,12</sup> Studies in adult DCM patients have reported a more severe phenotype and earlier onset in patients with a pathogenic genetic variant compared with variant-negative patients.<sup>13,14</sup> Furthermore, DCM patients with pathogenic variants in *lamin A/C (LMNA)*, *phospholamban (PLN)*, *RBM20*, *desmin (DES)*, and *filamin-C (FLNC)* are at higher risk for malignant arrhythmias and have a worse prognosis than patients with variants in other

genes.<sup>13–16</sup> Matthew et al showed that the affected gene (eg, *MYH7*), a higher variant burden, and *de novo* variant status are all factors independently associated with earlier onset and higher frequency of adverse outcomes in pediatric hypertrophic cardiomyopathy.<sup>17</sup> However, studies reporting on the utility of genetic testing for risk stratification in children with DCM are scarce.

The aims of the present study were 2-fold. First, we aimed to describe the current practice and results of genetic evaluation in a large cohort of pediatric DCM patients presenting to all tertiary referral hospitals in the Netherlands. Second, we evaluated these patients for potential genotype–phenotype correlations that may guide prognosis.

## METHODS

The data, analytic methods, and study materials will not be made available to other researchers for purposes of reproducing the results or replicating the procedure to protect patient privacy. The data that support the findings of this study are available from the corresponding author upon reasonable request. This study was approved by the Medical Research Ethical Committee of the Erasmus Medical Center (MEC 2014-062). All legal parents and children ≥12 years of age gave their written informed consent. Detailed methods are available in the Supplemental Methods.

## RESULTS

### Patient Characteristics

Hundred forty-four children with DCM were included in the study: 97 children (67%) diagnosed during the study period, and 47 patients (33%) diagnosed before the start of the study in 2010. Median age at diagnosis was 1.5 years [IQR 0.12–9.97], and 63 children (44%) were diagnosed before the age of 1 year.

Initial diagnostic categories included idiopathic DCM in 67 children (46%), myocarditis in 23 (16%), NMD in 7 (5%), familial DCM in 18 (13%), IEM in 4 (3%), malformation syndrome in 2 (1%), and “other” in 23 (16%). The “other” category included anthracycline-related DCM in 8 (6%), LV dilation and systolic dysfunction with non-compaction cardiomyopathy (NCCM) in 6 (4%) (as described by van Waning et al<sup>18</sup>), DCM based on tachyarrhythmia in 3 (2%), LV infarction in 2 (1%), vasculitis in 2 (1%), and congenital AV-block in 1 (1%).

The median follow-up time was 2.1 years [IQR 1.0–4.3]. Table 1 describes the clinical characteristics of the cohort.

### Genetic Findings

Hundred-seven of 144 DCM patients (74%) underwent genetic testing, with some patients undergoing >1 test. These 107 children were recruited from 105 families. In 1 family 2 siblings and a cousin were recruited. In another

**Table 1. Characteristics of Children with Dilated Cardiomyopathy Stratified by LP/P Variant-Positive Patients And Variant-Negative Patients**

Characteristic	Total	LP/P positive	Variant-Negative	P Value
	n = 144	n = 38	n = 69	
Sex, women, n (%)	68 (47)	20 (53)	32 (47)	0.49
Age at DCM diagnosis, years, median (IQR)	1.5 (0.12–10.0)	3.0 (0.1–12.4)	1.6 (0.3–6.0)	0.74
Heart failure score*, NYUPHFI, median (IQR)	9 (7–12)	9 (6–11)	9 (6–13)	0.37
Echocardiographic parameters*, mean (SD)				
LVEDD Z-score	4.8 (3.6)	4.3 (3.8)	5.6 (2.7)	0.07
SF	16 (7)	17 (7)	15 (7)	0.14
NT pro BNP*, pg/ml, median (IQR)	5244 (1893–21651)	4253 (895–28218)	6698 (1249–15908)	0.54
Time diagnosis till last follow-up years, median (IQR)	3.1 (1.3–5.7)	2.4 (0.7–5.5)	3.3 (1.2–5.7)	0.41
Status at end of study, n (%)				
Death/transplantation†	39 (27)	17 (45)	12 (17)	0.002
Ongoing disease	82 (57)	19 (50)	47 (68)	0.07
Recovered	23 (16)	2 (5)	10 (14)	0.15
Genetic evaluation, n (%)	107 (74%)			

Variant-negative: VUS or no variant.

Student's *t*-test in normally distributed data and Wilcoxon rank test in non-normally distributed data.

\*At study inclusion.

† $\chi^2$ .

DCM indicates dilated cardiomyopathy; IQR, interquartile range; NYUPHFI, New York University Pediatric Heart Failure Index; LVEDD, left ventricular end diastolic dimension; SF, shortening fraction; and NT pro BNP, N-terminal pro-brain natriuretic peptide.

family, 2 sibs were recruited, but genetic testing was performed in only one. No difference was observed in the percentage of genetic testing in patients who reached the SE compared with those who did not (29 of 39 (74%) versus 78 of 105 (75%),  $P=0.9$ ). Sixteen (15%) patients underwent only Sanger sequencing of 1 or more genes, whereas 67 (63%) patients had a targeted NGS gene panel (including those who also had undergone Sanger sequencing and/or ES). Thirty-three patients (31%) had ES with analysis of an expanded gene panel related to cardiomyopathy, 1 patient had genome sequencing with comprehensive analysis of all known genes and DNA of 3 patients was analyzed with another technique (SNP-array, multiplex PCR and southern blot analysis, multiplex ligation-dependent probe amplification). For 3 patients, information on which technique had been used could not be retrieved. In at least 58 patients (54%), all cardiomyopathy-related core genes had been sequenced and analyzed.<sup>19</sup> *MYH7* had been tested in 92 patients (86%) (see also Supplemental Tables I–III and Supplemental Figure 1). Table 2 describes the number of genetically evaluated patients and the number of likely pathogenic or pathogenic (LP/P) variants per diagnostic category.

Thirty-eight (36%) patients carried a LP/P variant, including 11 who had 1 or more additional VUSs. Forty patients (37%) had only 1 or more VUS, whereas 29 (27%) patients had no variant (Figure 1). The variant identified in 3 patients recruited from 1 family was classified as VUS.

LP/P variants were found in 21 different genes, with *MYH7* the largest contributor of pathogenic variants (8

LP/P variants (21%). The second highest contributors were *TTN* and *TPM1*, each accounting for 8% of positive test results. No variants were identified in a number of cardiac genes that are part of standard gene panels (Supplemental Table I). The clinical and genetic characteristics of the 38 patients with an LP/P variant are described in Table 3. Two patients with LP/P variants in genes related to a malformation syndrome (Alström syndrome) were found. Seven patients had LP/P variants in genes related to NMD (Duchenne disease, Becker disease, infantile type I muscle fiber disease and cardiomyopathy, centronuclear myopathy type 5). Four had LP/P variants in genes related to IEM (Very Long Chain Acyl-CoA dehydrogenase Deficiency, propionic acidemia, Barth syndrome, and GM1 gangliosidosis). In all patients, clinical phenotype, disease course and/or muscle biopsy results, and/or additional urine and enzyme analyses were compatible with the genetic diagnosis. In at least 1 patient, the genetic diagnosis led to new unsuspected clinical findings; in the patient with Barth syndrome, neutropenia and skeletal myopathy were subsequently diagnosed. In 3 patients, we found LP/P variants in 2 genes: *MYH7/RYR2*, *SCN5A/KCNQ1*, and *TBX20/GLB1*. DCM-associated *SCN5A* variants have been shown to have either loss- or gain-of-function effects on cardiac sodium channel activity.<sup>20–22</sup> In 1 patient, biallelic *ASNA1* variants were found (as described previously<sup>23</sup>). We also found 6 LP/P variants in 4 patients that we did not deem to be explanatory for the DCM, including 2 compound heterozygous truncating variants in *CEP135*, a *de novo* deletion of chromosome 14q22.3q23.1 (Hg19: 57,007,506–61,613,506), 2 compound heterozygous

**Table 2. Genetic evaluation and Outcome Per Diagnostic Category**

Initial Diagnostic DCM Category	Number of Patients at Start	Number of Patients Genetically Evaluated	Number of LP/P Variants	Number of Patients after Genetic Evaluation
Idiopathic	67	56	8	64
Myocarditis	23	7	1	22
NMD	7	7	7	8
Familial	18	18	11	26
IEM	4	4	4	4
Malformation syndrome	2	2	2	2
Other	23	13	5	18

DCM indicates dilated cardiomyopathy; NMD, neuromuscular disease; IEM, inborn error of metabolism; LP, likely pathogenic; and P, pathogenic.

pathogenic missense variants in *SLC37A4*, and a *de novo* missense variant in *MAP3K7*. Six of 38 variants (15%) were proven *de novo* (in 1 patient with a pathogenic variant in *TNNT2*, no data on segregation were available).

Cardiac screening of first-degree relatives was performed in 57 families (57/105; 54%). In 22 families (22/57; 39%), 1 or more relatives were affected (in 17 cardiomyopathy, in 3 rhythm disorder, and in 2 families SCD at age < 35 years). In 21 families, cardiac screening was not performed or not advised, and in 27 families it was unknown whether cardiac screening had taken place and/or results were not known. In 13 of the 38 families in which an LP/P variant was found (13/38; 34%), a cardiac phenotype was diagnosed in a relative (4 siblings in case of recessive disease, 9 first-degree relatives in case of dominant disease). However, it is not known whether this followed carrier screening or clinical phenotyping had been performed before genetic testing.

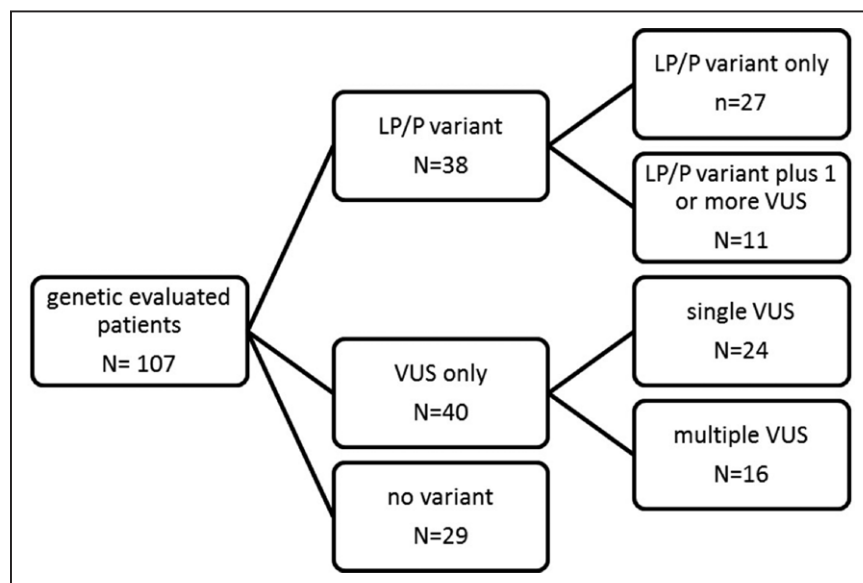
The diagnostic classifications of 20 patients changed during the study period. LP/P variants were found in 8 children (12%) who had initially been diagnosed with idiopathic DCM, and their cases were therefore reclassified to familial/genetic DCM. Seven of the 23 patients who were diagnosed with myocarditis underwent genetic evaluation,

and a pathogenic *LMNA* variant was found in 1 patient. The diagnostic category of this patient was therefore reclassified as familial/genetic DCM (Table 2). In 5 patients with LV dilation and systolic dysfunction with NCCM classified as “other,” an LP/P variant was found (*DES*, *MYH7*, *NKX2.5*, *PLN*, *SCN5A* (Table 3)). One patient initially classified as familial was reclassified as NMD after genetic evaluation (*MYL2*). One patient with phenotypical muscular dystrophy, in whom the diagnosis was confirmed by muscle biopsy, had negative genetic findings. The classification of this patient was maintained as NMD.

In addition, variant reclassification altered the definitive diagnosis in 5 patients (26% of all diagnostic reclassifications, Table 3). In these patients with a putative LP/P variant leading to allocation into the familial/genetic DCM group, the variant was reclassified as a VUS and patients were reclassified as idiopathic DCM. None of the variants initially classified as VUS were reclassified as LP/P (Table 2).

### Clinical Outcome

During the study period, 39 patients (27%) reached SE: 17 patients died (12%) and 22 patients (15%)



**Figure 1. Outcome genetic evaluation.**

The cases that were not genetically tested are explained by the underlying diagnosis, which was not an indication for a genetic test improbable at the time of initial evaluation: 16 cases of myocarditis, 6 cases of chemotherapy-related dilated cardiomyopathy (DCM), 2 cases of left ventricular-infarction, and 1 tachyarrhythmia-induced DCM. In the remaining 12 cases (11 idiopathic DCM and 1 DCM with features of non-compaction), genetic testing was declined by the parents for varying reasons. LP/P variant indicates likely pathogenic or pathogenic (class 4 or 5 variant according to the American College of Medical Genetics (ACMG) classification); and VUS, variant of unknown significance (class 3 variant according to the ACMG classification).

**Table 3. Clinical and Genetic Characteristics of Patients with Identified LP/P Variants**

Sex	Cardiac phenotype	Initial diagnostic category	Age at diagnosis (years)	Gene	Cellular structure	Variant (class)	Method	Inheritance	Additional VUS	Outcome
F	DCM	inborn error of metabolism	15.52	ACADVL (NM_000018.3)	other	c.104del, p.(Pro35Leufs*26), homozygous (5)	Sanger sequencing	autosomal recessive	TTNc.56083G>A, p.(Glu18695Lys)	ongoing disease
M	DCM	malformation syndrome	0.11	ALMS1 (NM_015120.4)	centrosome	c.6246_6247del, p.(Asp2083Cysfs*11) (5); c.10581del, p.(Met3527Ilefs*20) (5), compound heterozygous	Sanger sequencing	autosomal recessive		ongoing disease
F	DCM	malformation syndrome	0.1	ALMS1 (NM_015120.4)	centrosome	c.8361dupT, p.(Ile2788fs*), homozygous (5)	ES	autosomal recessive		ongoing disease
F	DCM	idiopathic	0.05	ASNA1 (NM_004317.2)	other	c.913C>T, p.(Gln305*), paternal (5); c.867C>G, p.(Cys289Trp), paternal; in cis configuration; c.488T>C, p.(Val163Ala), maternal (5)	ES (open exome)	autosomal recessive		died
F	DCM	other	8.45	DES (NM_001927.3)	cytoskeleton	c.1222C>G, p.(Leu408Val) (5)	targeted NGS	de novo		HTx
M	DCM	neuromuscular	15.79	DMD (NM_004006.2)	cytoskeleton	del exons 50-52 (X:31.628.821-31.754.369; Ensembl release 50) (5)	SNP-array	x-linked recessive		ongoing disease
M	DCM	neuromuscular	8.89	DMD(NM_004006.2)	cytoskeleton	del exons 42-43 (5)	MLPA DMD gene	x-linked recessive		ongoing disease
M	DCM	neuromuscular	15.98	DMD(NM_004006.2)	cytoskeleton	del exons 8-(35) (5)	multiplex PCR en southern blot analysis of DMD gene	x-linked recessive		ongoing disease
M	DCM	neuromuscular	12.61	DMD(NM_004006.2)	cytoskeleton	c.10094C>G, p.(Ser3365*) (5)	Sequencing exon 70	x-linked recessive		died
M	DCM	neuromuscular	12.44	DMD(NM_004006.2)	cytoskeleton	c.186+1G>C resulting in an in-frame deletion of exon 3 (5)	RT-PCR/PTT exons 2 - 79, RT-PCR exons 3-7, sequence analysis exon 3	x-linked recessive		HTx
F	DCM	familial/genetic	14.83	DSP (NM_004415.3)	desmosome	c.2631-2A>C, p.(?) (5)	targeted NGS	de novo	LDB3 c.2092G>A, p.(Ala698Thr) MYPN c.251A>G, p.(Asn84Ser)	ongoing disease
F	DCM	myocarditis	1.66	LMNA (NM_170707.3)	nuclear envelope	c.992G>A, p.(Arg331Gln) (5)	targeted NGS	autosomal dominant	ANKRD c.651+1G>A, p.(?)	recovered
F	mixed DCM/HCM	familial/genetic	0.11	MYBPC3 (NM_000256.3)	sarcomere	c.2827C>T, p.(Arg943*), homozygous (5)	Sanger sequencing	autosomal recessive		died
F	DCM	familial/genetic	0.13	MYH7 (NM_000257.2)	sarcomere	c.5754C>G, p.(Asn1918Lys) (5)	Sanger sequencing	autosomal dominant		recovered
M	DCM	familial/genetic	0.91	MYH7 (NM_000257.2); RYR2 (NM_001035.2)	sarcomere; calcium/sodium handling	c.5754C>G, p.(Asn1918Lys), maternal (5); c.5335A>G, p.(Ser1779Gly), de novo (4)	targeted NGS	autosomal dominant; de novo	MYBPC3 c.529C>T, p.(Arg177Cys)	ongoing disease
F	mixed DCM/NCCM	other	0.12	MYH7 (NM_000257.3)	sarcomere	c.1106G>A, p.(Arg369Gln) (5)	Sanger sequencing	autosomal dominant		HTx
M	DCM	idiopathic	0.04	MYH7 (NM_000257.3)	sarcomere	c.2711G>A, p.(Arg904His) (5)	targeted NGS	de novo		ongoing disease
F	DCM	idiopathic	2.3	MYH7 (NM_000257.3)	sarcomere	c.5740G>A, p.(Glu1914Lys) (5)	targeted NGS	autosomal dominant	TTNc.16576A>C, p.(Asn5526His)	ongoing disease
M	DCM	familial/genetic	0.19	MYH7 (NM_000257.3)	sarcomere	c.602T>C, p.(Ile201Thr) (5)	targeted NGS	autosomal dominant		ongoing disease

(Continued)

Downloaded from http://ahajournals.org by on May 1, 2023

**Table 3. Continued**

Sex	Cardiac phenotype	Initial diagnostic category	Age at diagnosis (years)	Gene	Cellular structure	Variant (class)	Method	Inheritance	Additional VUS	Outcome
M	DCM	familial/genetic	0.07	<i>MYH7</i> (NM_000257.3)	sarcomere	c.5773C>G, p.(Arg1925Gly) (5)	targeted NGS	autosomal dominant		ongoing disease
M	DCM	familial/genetic	10.41	<i>MYH7</i> (NM_000257.3)	sarcomere	c.1106G>A, p.(Arg369Gln) (5)	Sanger sequencing	autosomal dominant		ongoing disease
M	DCM	familial/genetic	0.32	<i>MYL2</i> (NM_000432.3)	sarcomere	c.403-1G>C, homozygous (5)	Sanger sequencing	autosomal recessive		died
F	mixed DCM/NCCM	other	13.31	<i>NKX2.5</i> (NM_004387.3)	other	c.592C>T, p.(Gln198*) (5)	targeted NGS	autosomal dominant		HTx
M	DCM	inborn error of metabolism	12.3	<i>PCCA</i> (NM_000282.3)	other	c.1409T>G, p.(Leu470Arg), homozygous (5)	Sanger sequencing	autosomal recessive		ongoing disease
F	mixed DCM/NCCM	other	15.81	<i>PLN</i> (NM_002667.4)	sarcoplasmic reticulum, calcium/sodium handling	c.25C>T, p.(Arg9Cys) (5)	targeted NGS	<i>de novo</i>	<i>TTN</i> c.60842A>T, p.(Asp20281Val)	HTx
F	NCCM	familial/genetic	0.08	<i>RYR2</i> (NM_001035.2)	ion channel	c.11084T>C, p.(Met3695Thr), maternal (3); del exon 19, paternal (4)	targeted NGS	autosomal recessive		died
M	mixed DCM/NCCM	other	0	<i>SCN5A</i> (NM_198056.2); <i>KCNQ1</i> (NM_000218.2)	ion channel	c.4978A>G, p.(Ile1660Val) (5); c.973G>A, p.(Gly325Arg) (5)	targeted NGS	autosomal dominant		recovered
M	DCM	neuromuscular	6.9	<i>SPEG</i> (NM_005876.4)	sarcoplasmic reticulum	c.9185_9187del, p.(Val3062del), homozygous (4)	ES with analysis of 310 genes related to CMP	autosomal recessive		died
M	DCM	inborn error of metabolism	0.31	<i>TAZ</i> (NM_001303465.1)	mitochondrial	c.523del, p.(Val175Serfs*29) (5)	Sanger sequencing	x-linked recessive		HTx
F	DCM	inborn error of metabolism	0.27	<i>TBX20</i> (NM_001077653.2); <i>GLB1</i> (NM_000404.3)	transcription factor	c.456C>G, p.(Ile152Met) (4); c.176G>A, p.(Arg59His), homozygous (5)	WGS with analysis of 310 genes related to CMP	autosomal dominant; autosomal recessive	<i>MYH6</i> c.4037G>A, p.(Arg1346Gln) <i>RAF1</i> c.29C>T, p.(Thr10Met)	died
F	DCM	idiopathic	3.77	<i>TNNT2</i> (NM_000364.3)	sarcomere	c.650_652del, p.(Lys217del) (5)	targeted NGS	unknown		died
F	DCM	familial/genetic	10.86	<i>TNNT2</i> (NM_000364.3)	sarcomere	c.650_652del, p.(Lys217del) (5)	targeted NGS	autosomal dominant		died
M	DCM	idiopathic	0.15	<i>TPM1</i> (NM_000366.5)	sarcomere	c.725C>T, p.(Ala242Val) (4)	targeted NGS	<i>de novo</i>		recovered
F	DCM	familial/genetic	5.38	<i>TPM1</i> (NM_000366.5)	sarcomere	c.688G>A, p.(Asp230Asn) (5)	targeted NGS	autosomal dominant		HTx
F	DCM	familial/genetic	0.42	<i>TPM1</i> (NM_000366.5)	sarcomere	c.250G>A, p.(Asp84Asn) (5)	targeted NGS	autosomal dominant		ongoing disease
F	DCM	idiopathic	9.94	<i>TTN</i> (NM_133378.4)	sarcomere - Z-disc	c.81610G>T, p.(Glu27204*) (4); c.1184G>T p.(Gly339Cys) (5); c.1212T>C p.(Leu348Pro) (5), compound heterozygous	ES with analysis of 310 genes related to CMP; Sanger sequencing	autosomal dominant; autosomal recessive		died
M	DCM	idiopathic	16.94	<i>TTN</i> (NM_133378.4)	sarcomere - Z-disc	c.61121-1G>A, p.(Glu20374Glyfs*7) (4)	targeted NGS	autosomal dominant		ongoing disease
F	DCM	idiopathic	13.63	<i>TTN</i> (NM_133378.4)	sarcomere - Z-disc	c.62347C>T, p.(Arg20783*) (4)	targeted NGS	autosomal dominant	<i>TTN</i> c.80981G>A, p.(Gly26994Asp) <i>DSC2</i> c.2603C>T, p.(Ser868Phe)	ongoing disease

CMP indicates cardiomyopathy; ES, exome sequencing; HTx, heart transplantation; NGS, next-generation sequencing; PTT, protein truncation test; RT-PCR, reverse transcriptase polymerase chain reaction; and WGS, whole genome sequencing.

Downloaded from http://ahajournals.org by on May 1, 2023

underwent HTx. Median time from diagnosis to death was 0.09 years [IQR 0.03–1.1]. Median time to HTx was 2.9 years [IQR 1.1–6.1]. At the end of the study, 23 children (16%) had recovered (35% diagnosed with myocarditis), but 82 children (57%) had ongoing disease.

### Association of LP/P Variants with Clinical Outcome

Seventeen of 38 children with a LP/P variant reached SE, whereas 19 had ongoing disease and 2 (with variants in *MYH7* and *LMNA*) recovered.

Children with a LP/P variant were more likely to die or undergo HTx compared with children without a pathogenic variant (17 of 38 (45%) versus 12 of 69 (17%),  $P = 0.002$ ). We found no differences in clinical characteristics at time of diagnosis between children with a LP/P variant and those without (Table 1). Median age at SE tended to be lower in children with a LP/P variant, however this difference was not statistically significant ( $P = 0.19$ ). Median age at SE was 10.9 years [IQR 0.6–16.1] in variant-positive patients, and 5 of 17 (29%) were under 1 year of age. In variant-negative patients, median age at SE was 13.3 years [IQR 6.9–14.6], and the age of the youngest patient at SE was 3.5 years.

Of the 17 LP/P variant-positive children reaching SE, 10 (53%) died and 7 (41%) underwent HTx. The majority of variant-negative children who reached a SE underwent HTx (8/12; 67%), while 4 of 12 children died (36%,  $P = 0.26$ ).

Transplant-free survival was significantly lower in patients with a LP/P variant compared with variant-negative patients ( $P = 0.006$ , Figure 2). This was also true when excluding the 8 children who were clinically and/or genetically diagnosed with NMD ( $P = 0.04$ ). Children with a LP/P variant had a 2.8-times increased risk of death or HTx (hazard ratio 2.8; 95% CI 1.3–5.8,  $P = 0.007$ ). This hazard ratio stayed identical when excluding those diagnosed with NMD (2.8; 95% CI 1.2–6.0,  $P = 0.01$ ). Transplant-free survival was higher in *MYH7*-positive children compared with those with a LP/P variant in other genes ( $P = 0.03$ , KM curve not shown).

In children without LP/P variants, we did not find an association between the presence or absence of VUSs and SE: 6/40 with one or more VUSs reached a SE versus 6/29 without VUSs reached a SE ( $P = 0.4$ , Figure 1).

The number of patients reaching a SE and the heterogeneity of genetic findings meant that we had insufficient statistical power to explore the relationship between single affected genes or *de novo* variants and outcome.

## DISCUSSION

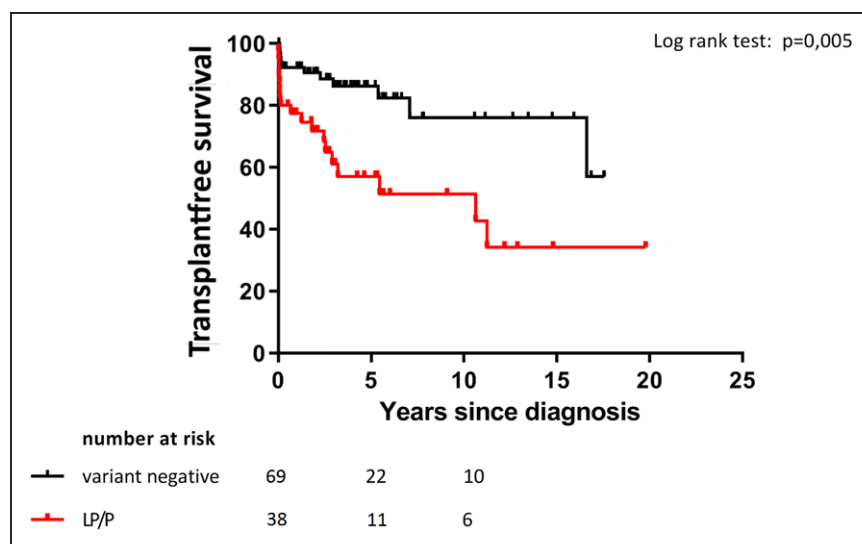
In this cohort of 107 genetically evaluated children with DCM, 38 children (36%) carried a LP/P variant

in a DCM-related gene, most often in *MYH7*. Children with DCM who carried a LP/P variant had a 2.8-times increased risk of death or HTx compared with children without such a variant, but clinical characteristics at time of diagnosis did not differ between the 2 groups. In addition, children with a LP/P variant were more likely to die or undergo HTx at an earlier age. These findings highlight the importance of early genetic testing in children with DCM, as the determination of a genetic cause can be valuable for predicting clinical outcome.

### Yield of Genetic Testing in Children with DCM

In adults with DCM, the yield of genetic testing varies between 16% and 37%.<sup>24</sup> There are only a few studies on current genetic testing in pediatric DCM. These studies differ in inclusion criteria (isolated DCM versus non-isolated DCM), the extent of genetic testing, and variant filtering and interpretation. Pugh et al reported an overall yield of 37% in 766 individuals with DCM (including 286 patients younger than 18 years) using gene panels that included between 5 and 46 genes, with *TTN* being the largest contributor (up to 14%). Selecting for all patients aged <18 years, a yield of 15.4% can be distracted.<sup>10</sup> Kühnisch et al found 8 LP/P variants in 34 pediatric patients with DCM (24%) using a panel-based NGS approach targeting 89 genes, which identified variants in *TTN* (1), *TNNT2* (2), *TNNI3* (1), *MYH7* (1), *MYBPC3* (1), and *ACTC1* (1).<sup>25</sup> In a recent study by Herkert et al, combining copy number variant analysis with stepwise trio-based ES yielded a diagnosis in >50% of pediatric DCM patients. They also identified LP/P variants in patients with nonfamilial DCM and in patients with extra-cardiac features or possible myocarditis.<sup>7</sup> In a study by Long et al, ES in 18 families with DCM (including 3 syndromic cases) yielded a genetic diagnosis in 33% when filtering for 55 known DCM genes. When they expanded their analysis by filtering the exome for compound heterozygous and *de novo* variants, they diagnosed 4 additional patients, including carriers of rare and syndromic genes (*ALMS1* and *PRDM16*) and 2 potential novel genes (*RRAGC* and *TAF1A*), resulting in a final yield of 50%. Vasilescu et al reported a genetic diagnosis in 10 of 37 pediatric DCM patients (27%), of which 3 were in novel or less-established disease genes (*PPA2*, *TAB2*, and *NRAP*) and 2 were in mitochondrial DNA. They also showed an increase in a genetic diagnosis with later onset of cardiomyopathy: age <1 year – 34% positive DNA diagnosis, age 1 to 5 years – 38% and age >6 years – 60%. They further showed that infants manifesting before 1 year of age had the poorest prognosis, especially when their cardiomyopathy was associated with a metabolic or syndromic origin, which is in line with previous studies.<sup>9</sup> Finally, in a study in neonates with heart failure, ES was diagnostic in 10 of 15 (68%), although only 20% had a clinical diagnosis of DCM.<sup>26</sup>





**Figure 2.** Kaplan-Meier analysis of 107 genetically evaluated children with dilated cardiomyopathy, children with a likely pathogenic or pathogenic (LP/P) variant versus no variant or variant of unknown significance LP/P: class 4 or 5 variant according to the American College of Medical Genetics classification Transplant-free survival (%) since diagnosis in LP/P group versus variant negative group.

The yield of genetic testing in pediatric DCM is consistent with that in adult-onset non-ischemic DCM, varying between 19% and 54%.<sup>78,10,27–29</sup> However, the spectrum of genes involved in pediatric DCM differs from that seen in adult DCM.<sup>30,31</sup> Pugh et al showed that the genes implicated in DCM vary with age. In adults and children 2–18 years of age, the majority of variants were located in *TTN* and *DSP*. In children under 2 years of age, *MYH7* was predominantly mutated and no *TTN* variants were found.<sup>10</sup> This matches our findings as 6 of 8 children in our cohort with LP/P *MYH7* variants were under the age of 1 year at diagnosis, confirming that these variants frequently underlie DCM with infant presentation.

Our yield of 36% LP/P variants in pediatric DCM and the spectrum of genes involved are thus in line with international literature, but also leave room for further increase in yield, e.g. by systematically offering ES with analysis of an expanded gene panel or of all disease-associated genes. This is especially important for children <1 year of age at diagnosis, where the diagnostic yield of ES goes up to 55% (5/9) and 3 of 5 (60%) genes with pathogenic variants were not part of (adult-onset) cardiomyopathy panels because they are involved in metabolic and syndromic diagnoses.<sup>26</sup>

### The Predictive Value of the Variants Detected

In adults with non-ischemic DCM, there is increasing insight into the association between certain pathogenic variants and outcome. In a large meta-analysis, the highest HTx rate was found in *LMNA* mutation carriers (27%), while *RBM20* mutation carriers underwent HTx at a younger age (mean 28.5 years) than carriers of pathogenic variants in other genes (mean 41–43 years).<sup>32</sup> Another study in 5267 individuals, ranging from healthy volunteers to end-stage DCM patients, showed that *TTN*-truncating variant-positive DCM patients reached the SE of death, HTx or ventricular assist device at earlier

ages and sooner after enrolment than *TTN*-truncating variant-negative DCM patients.<sup>33</sup> Janswijer et al found that truncating *TTN* mutations were associated with a milder form of DCM compared with that seen in patients with *LMNA* variants or idiopathic DCM.<sup>34</sup> These findings were (partly) explained by differences in disease severity and the number of adverse events between the cohorts. In a study on the prognosis of 52 adults with DCM carrying rare variants in sarcomeric genes (*MYH6*, *MYH7*, *MYBPC3*, *TNNT2*, and *TTN*), it was shown that death/HTx-free survival dramatically decreased after 50 years of age in variant-positive patients compared with variant-negative patients.<sup>35</sup>

When predicting outcome in children with DCM, the genetic contribution is less clear. Specific variants (eg, in *LMNA* or *SCN5A*) have been linked to sudden cardiac death, as this is related to malignant ventricular arrhythmias.<sup>8,36</sup> However, sudden cardiac death in children with DCM (5-year incidence of 3%) is a less prevalent clinical issue than death due to heart failure or the need for HTx.<sup>37</sup> To the best of our knowledge, only 1 study has systematically evaluated children with non-HCM cardiomyopathy (with 56 of 70 patients diagnosed with DCM) for genetic disease and association with outcome: HTx were more often performed in variant-positive children than in variant-negative subgroups (48% versus 34%), and the variant-positive children had higher mortality (17% versus 2%). Of note, outcome was not specified for the 56 DCM patients.<sup>38</sup>

In our study, which reports on the largest cohort of genetically tested children with DCM to date, we also observed decreased survival in children with a LP/P genetic variant. Our study is thus an important contribution to the mounting evidence that carrying a LP/P variant puts children at an increased risk of death or HTx. We also found that *MYH7* variant carriers were less likely to die or undergo HTx compared with patients with LP/P variants in other genes, although our numbers were

small. Whether this truly implies that *MYH7* variants are relatively benign remains unknown. In adult DCM studies such a favorable genotype–phenotype relation could not be demonstrated for *MYH7* compared with *LMNA*, *PLN*, *RBM20*, *MYBPC3*, *TNNT2*, and *TNNI3* (29).

## Clinical Implications of Our Study

The results of our study justify incorporating genetic testing early on in the diagnostic work-up of all children with DCM.<sup>7</sup> Since determining disease pathogenesis is essential for prognosis and counseling, genetic testing should be offered as soon as possible after diagnosis. In both adults and children, there is also increasing evidence that the presence of external causal factors (eg, chemotherapy or myocarditis) does not preclude a genetic cause for the DCM.<sup>39–41</sup> The diagnosis of myocarditis is often only based on clinical characteristics.<sup>42</sup> In our study we identified a pathogenic *LMNA* variant in a child diagnosed with myocarditis, which is a good example of how previously silent genetic defects might predispose to heart failure early in life when viral myocarditis acts as a second hit.<sup>43</sup> A number of experts have pointed out the potential relevance of underlying genetic abnormalities, that may be unmasked or present in the setting of a clinical picture resembling myocarditis or even in patients with biopsy-proved myocarditis.<sup>44</sup> This is further supported by a recent study from Seidel et al, in which they found likely pathogenic or pathogenic variant in 22% of patients with biopsy-proved myocarditis, especially in the group of patients with myocarditis mimicking DCM.<sup>45</sup> These findings suggest to genetically evaluate all children diagnosed with DCM in an early stage, regardless of presumed disease pathogenesis. They also call for genetic re-evaluation of all children with DCM who have been tested previously, but to whom ES has not been offered. In our cohort, 74% percent of children were genetically evaluated, which clearly leaves room for improvement. Optimizing collaboration between pediatric cardiologists and clinical geneticists and genetic counseling of parents might increase the uptake of genetic testing.

At present, the direct translation of a genetic variant into individual clinical risk prediction in the pediatric population is challenging. DCM in children is characterized by genetic heterogeneity, a situation contrary to that for HCM, where a relatively limited number of genes seem to be involved, predominantly those related to the sarcomere.<sup>46</sup> Penetrance and age of presentation also vary in DCM.<sup>47–49</sup> Based on our findings, children who carry an LP/P variant in an established gene associated with DCM should be considered at an increased risk for adverse outcomes. The use of genetic information for better management and risk prediction will require close collaboration between research centers and analysis of pooled data. In this respect, the results of the “PCM Genes study” of the PCMR, which aims to offer ES to

600 children with DCM, will provide more insight into genetic testing and associations with outcome.<sup>50</sup> As long as it is not clear how to differentiate between recovery and remission, children who are variant-positive but recover should continue to receive follow-up care.<sup>51</sup>

## LIMITATIONS

Our study has limitations. Initially, diagnostic categories were assigned following the etiologic categories of the PCMR.<sup>11</sup> However, these data pre-dated many clinically available genetic tests and, along with other epidemiologic studies, highlight the uncertain etiological basis of cardiomyopathy given that the majority of DCM patients were identified as idiopathic. Future directions of the registry include the use of ES to improve diagnostic strategies, which may lead to different etiologic classification.<sup>50</sup> In our study, several idiopathic cases turned out to be familial/genetic. Furthermore, IEM and NMD are considered distinct categories even though a genetic diagnosis typically underlies these diseases as well. For that reason, we have included IEM and NMD as LP/P variant-positive in our analyses. It might have been more transparent if we had assigned 1 genetic diagnostic category that included subcategories of IEM and NMD in addition to those with a LP/P variant in an explanatory gene and those with 2 or more affected first-degree family members. Secondly, some of our data were retrospective, and missing data might be an issue here despite the efforts we made to obtain all available data. Thirdly, genetic testing panels changed during the study period, which influences genetic yield. Furthermore, we could only be certain that a variant was *de novo* in cases with genetic evaluation of both parents, so the true number of *de novo* cases and possible relation to worse outcome remains unknown. Finally, our sample size was too small to test associations between individual variants/genes and phenotype.

## CONCLUSIONS

Genetic testing is a valuable tool predicting outcome in children with DCM and counseling families. Patients with a LP/P variant have an overall worse prognosis. Genetic testing should therefore be incorporated in clinical care of all children with DCM, regardless of presumed disease pathogenesis.

## ARTICLE INFORMATION

Received March 18, 2020; accepted June 22, 2022.

### Affiliations

Dept of Pediatric Cardiology, Erasmus MC, Univ Medical Center Rotterdam, Rotterdam (M.H.M., M.D.), Dept of Genetics, Univ of Groningen, Univ Medical Center Groningen, Groningen (J.C.H., I.C.), Dept of Pediatric Cardiology, Univ of Groningen, Univ Medical Center Groningen, Groningen (G.J.M.S.), Dept of Pediatric Cardiology, Univ of Leiden, Leiden Univ Medical Center, Leiden (N.A.B., A.D.J.H.), Dept of Pediatric Cardiology, Univ of Amsterdam, Academic Medical Center,

Amsterdam (N.A.B.), Dept of Pediatric Cardiology, Univ of Utrecht, Wilhelmina Children's Hospital, Univ Medical Center Utrecht, Utrecht (H.M.P.J.B.), Dept of Pediatric Cardiology, Amsterdam Univ Medical Center, location Free Univ Medical Center, Amsterdam (L.A.J.R.), Dept of Pediatric Cardiology, Radboud Univ Medical Center, Nijmegen (R.B.T.), Dept of Genetics, Radboud Univ Medical Center, Nijmegen (C.M.), Dept of Clinical Genetics, Erasmus MC, Univ Medical Center Rotterdam, Rotterdam (I.M.B.H.L., J.M.A.V.), Dept of Clinical Genetics, Amsterdam Univ Medical Center, location AMC, Amsterdam (R.H.L.D., J.P.T.), Dept of Clinical Genetics, Univ of Leiden, Leiden Univ Medical Center, Leiden (D.Q.C.M.B.-S., I.C.), Dept of Genetics, Univ of Utrecht, University Medical Center Utrecht, Utrecht, the Netherlands (A.F.B., A.S., J.P.T.)

### Acknowledgments

The authors thank the patients and their families for their participation, research nurses Badies Manai and Annelies Hennink for data collection, and Kate McIntyre for editing the article.

### Sources of Funding

MH van der Meulen was supported by a joint grant from "Stichting Hardedroom" [Rotterdam, the Netherlands] and the "Netherlands Heart Foundation" (2013T087). JP van Tintelen and M Dalinghaus acknowledge the support from the Netherlands Cardiovascular Research Initiative, an initiative with support of the Dutch Heart Foundation (CVON2014-40 DOSIS; CVON2020B005 DOUBLE-DOSE).

### Disclosures

None.

### Supplemental Material

Supplemental Methods  
Supplemental Table S1 (Data sets)  
Supplemental Tables S2-S3  
Supplemental Figure S1  
References<sup>52–57</sup>

## REFERENCES

- Olson TM, Kishimoto NY, Whitby FG, Michels VV. Mutations that alter the surface charge of alpha-tropomyosin are associated with dilated cardiomyopathy. *J Mol Cell Cardiol*. 2001;33:723–732. doi: 10.1006/jmcc.2000.1339
- Olson TM, Michels VV, Thibodeau SN, Tai YS, Keating MT. Actin mutations in dilated cardiomyopathy, a heritable form of heart failure. *Science*. 1998;280:750–752. doi: 10.1126/science.280.5364.750
- Towbin JA, Bowles NE. Genetic abnormalities responsible for dilated cardiomyopathy. *Curr Cardiol Rep*. 2000;2:475–480. doi: 10.1007/s11886-000-0063-9
- McNally EM, Mestroni L. Dilated cardiomyopathy: genetic determinants and mechanisms. *Circ Res*. 2017;121:731–748. doi: 10.1161/CIRCRESAHA.116.309396
- Harakalova M, Kummeling G, Sammani A, Linschoten M, Baas AF, van der Smagt J, Doevendans PA, van Tintelen JP, Dooijes D, Mokry M, et al. A systematic analysis of genetic dilated cardiomyopathy reveals numerous ubiquitously expressed and muscle-specific. *Eur J Heart Fail*. 2015;17:484–493. doi: 10.1002/ejhf.255
- Posafalvi A, Herkert JC, Sinke RJ, van den Berg MP, Mogensen J, Jongbloed JDH, van Tintelen JP. Clinical utility gene card for: dilated cardiomyopathy (CMD). *Eur J Hum Genet*. 2013;21. doi: 10.1038/ejhg.2012.276
- Herkert JC, Abbott KM, Bernie E, Meems-Veldhuis MT, Boven LG, Benjamins M, du Marchie Sarvaas GJ, Barge-Schaapveld D, van Tintelen JP, van der Zwaag PA, et al. Toward an effective exome-based genetic testing strategy in pediatric dilated cardiomyopathy. *Genet Med*. 2018;20:1374–1386. doi: 10.1038/gim.2018.9
- Long PA, Evans JM, Olson TM. Diagnostic yield of whole exome sequencing in pediatric dilated cardiomyopathy. *J Cardiovasc Dev Dis*. 2017;4:11. doi: 10.3390/jcdd4030011
- Vasilescu C, Ojala TH, Brilhante V, Ojanen S, Hinterding HM, Palin E, Alastalo TP, Koskenvuo J, Hiippala A, Jokinen E, et al. Genetic basis of severe childhood-onset cardiomyopathies. *J Am Coll Cardiol*. 2018;72:2324–2338. doi: 10.1016/j.jacc.2018.08.2171.
- Pugh TJ, Kelly MA, Gowrisankar S, Hynes E, Seidman MA, Baxter SM, Bowser M, Harrison B, Aaron D, Mahanta LM, et al. The landscape of genetic variation in dilated cardiomyopathy as surveyed by clinical DNA sequencing. *Genet Med*. 2014;16:601–608. doi: 10.1038/gim.2013.204
- Towbin JA, Lowe AM, Colan SD, Sleeper LA, Orav EJ, Clunie S, Messere J, Cox GF, Lurie PR, Hsu D, et al. Incidence, causes, and outcomes of dilated cardiomyopathy in children. *JAMA*. 2006;296:1867–1876. doi: 10.1001/jama.296.15.1867
- Singh RK, Canter CE, Shi L, Colan SD, Dodd DA, Everitt MD, Hsu DT, Jefferies JL, Kantor PF, Pahl E, et al. Survival without cardiac transplantation among children with dilated cardiomyopathy. *J Am Coll Cardiol*. 2017;70:2663–2673. doi: 10.1016/j.jacc.2017.09.1089
- van Spaendonck-Zwarts KY, van Rijsingen IA, van den Berg MP, Lekanne Deprez RH, Post JG, van Mil AM, Asselbergs FW, Christiaans I, van Langen IM, Wilde AA, et al. Genetic analysis in 418 index patients with idiopathic dilated cardiomyopathy: overview of 10 years' experience. *Eur J Heart Fail*. 2013;15:628–636. doi: 10.1093/eurjhf/hft013
- Bondue A, Arbustini E, Bianco A, Ciccarelli M, Dawson D, De Rosa M, Hamdani N, Hilfiker-Kleiner D, Meder B, Leite-Moreira AF, et al. Complex roads from genotype to phenotype in dilated cardiomyopathy: scientific update from the Working Group of Myocardial Function of the European Society of Cardiology. *Cardiovasc Res*. 2018;114:1287–1303. doi: 10.1093/cvr/cvy122
- Hasselberg NE, Haland TF, Saberniak J, Brekke PH, Berge KE, Leren TP, Edvardsen T, Haugaa KH. Lamin A/C cardiomyopathy: young onset, high penetrance, and frequent need for heart transplantation. *Eur Heart J*. 2018;39:853–860. doi: 10.1093/eurheartj/ehx596
- Pasotti M, Klersy C, Pilotto A, Marziliano N, Rapezzi C, Serio A, Mannarino S, Gambarin F, Favalli V, Grasso M, et al. *J Am Coll Cardiol*. 2008;52:1250–1260. doi: 10.1016/j.jacc.2008.06.044
- Mathew J, Zahavich L, Lafreniere-Roula M, Wilson J, George K, Benson L, Bowdin S, Mital S. Utility of genetics for risk stratification in pediatric hypertrophic cardiomyopathy. *Clin Genet*. 2018;93:310–319. doi: 10.1111/cge.13157
- van Waning JI, Caliskan K, Michels M, Schinkel AFL, Hirsch A, Dalinghaus M, Hoedemaekers YM, Wessels MW, AS IJ, Hofstra RMM, et al. Cardiac Phenotypes, Genetics, and Risks in Familial Noncompaction Cardiomyopathy. *J Am Coll Cardiol*. 2019;73:1601–1611. doi: 10.1016/j.jacc.2018.12.085
- Weiss MM, Van der Zwaag B, Jongbloed JD, Vogel MJ, Bruggenwirth HT, Lekanne Deprez RH, Mook O, Ruivenkamp CA, van Slegtenhorst MA, van den Wijngaard A, et al. Best practice guidelines for the use of next-generation sequencing applications in genome diagnostics: a national collaborative study of Dutch genome diagnostic laboratories. *Hum Mutat*. 2013;34:1313–1321. doi: 10.1002/humu.22368
- Nikolova V, Leimena C, McMahon AC, Tan JC, Chandar S, Jorgia D, Kesteven SH, Michalick J, Otway R, Verheyen F, et al. Defects in nuclear structure and function promote dilated cardiomyopathy in lamin A/C-deficient mice. *J Clin Invest*. 2004;113:357–369. doi: 10.1172/JCI19448
- Mann SA, Castro ML, Ohanian M, Guo GL, Zodgekar P, Sheu A, Stockhammer K, Thompson T, Playford D, Subbiah R, et al. R222Q SCN5A mutation is associated with reversible ventricular ectopy and dilated cardiomyopathy. *J Am Coll Cardiol*. 2012;60:1566–1573. doi: 10.1016/j.jacc.2012.05.050
- Nguyen TP, Wang DW, Rhodes TH, George AL. Divergent biophysical defects caused by mutant sodium channels in dilated cardiomyopathy with arrhythmia. *Circ Res*. 2008;102:364–371. doi: 10.1161/CIRCRESAHA.107.164673
- Verhagen JMA, van den Born M, van der Linde HC, P GJN, Verdijk RM, Kivlen MH, van Unen LMA, Baas AF, Ter Heide H, van Osch-Gevers L, et al. Biallelic Variants in ASNA1, Encoding a cytosolic targeting factor of tail-anchored proteins, cause rapidly progressive pediatric cardiomyopathy. *Circ Genom Precis Med*. 2019;12:397–406. doi: 10.1161/CIRCGEN.119.00250
- Mazzarotto F, Tayal U, Buchan RJ, Midwinter W, Wilk A, Whiffin N, Govind R, Mazaika E, de Marvao A, Dawes TJW, et al. Reevaluating the genetic contribution of monogenic dilated cardiomyopathy. *Circulation*. 2020;141:387–398. doi: 10.1161/CIRCULATIONAHA.119.037661
- Kuhnisch J, Herbst C, Al-Wakeel-Marquard N, Dartsch J, Holtgrewe M, Baban A, Mearini G, Hardt J, Kolokotronis K, Gerull B, et al. Targeted panel sequencing in pediatric primary cardiomyopathy supports a critical role of TNNI3. *Clin Genet*. 2019;96:549–559. doi: 10.1111/cge.13645
- Ritter A, Bedoukian E, Berger JH, Copenheaver D, Gray C, Krantz I, Izumi K, Juusola J, Leonard J, Lin K, et al. Clinical utility of exome sequencing in infantile heart failure. *Genet Med*. 2020;22:423–426. doi: 10.1038/s41436-019-0654-3
- Kindel SJ, Miller EM, Gupta R, Cripe LH, Hinton RB, Spicer RL, Towbin JA, Ware SM. Pediatric cardiomyopathy: importance of genetic and metabolic evaluation. *J Card Fail*. 2012;18:396–403. doi: 10.1016/j.cardfail.2012.01.017

28. Lakdawala NK, Funke BH, Baxter S, Cirino AL, Roberts AE, Judge DP, Johnson N, Mendelsohn NJ, Morel C, Care M, et al. Genetic testing for dilated cardiomyopathy in clinical practice. *J Card Fail*. 2012;18:296–303. doi: 10.1016/j.cardfail.2012.01.013
29. Ware SM, Bhatnagar S, Dexheimer PJ, Wilkinson JD, Sridhar A, Fan X, Shen Y, Tariq M, Schubert JA, Colan SD, et al. The genetic architecture of pediatric cardiomyopathy. *Am J Hum Genet*. 2022;109:282–298. doi: 10.1016/j.ajhg.2021.12.006
30. Rampersaud E, Siegfried JD, Norton N, Li D, Martin E, Hershberger RE. Rare variant mutations identified in pediatric patients with dilated cardiomyopathy. *Prog Pediatr Cardiol*. 2011;31:39–47. doi: 10.1016/j.ppedcard.2010.11.008
31. Lee TM, Hsu DT, Kantor P, Towbin JA, Ware SM, Colan SD, Chung WK, Jefferies JL, Rossano JW, Castleberry CD, et al. Pediatric Cardiomyopathies. *Circ Res*. 2017;121:855–873. doi: 10.1161/CIRCRESAHA.116.309386
32. Kayvanpour E, Sedaghat-Hamedani F, Amr A, Lai A, Haas J, Holzer DB, Frese KS, Keller A, Jensen K, Katus HA, et al. Genotype-phenotype associations in dilated cardiomyopathy: meta-analysis on more than 8000 individuals. *Clin Res Cardiol*. 2017;106:127–139. doi: 10.1007/s00392-016-1033-6
33. Roberts AM, Ware JS, Herman DS, Schafer S, Baksi J, Bick AG, Buchan RJ, Walsh R, John S, Wilkinson S, et al. Integrated allelic, transcriptional, and phenomic dissection of the cardiac effects of titin truncations in health and disease. *Sci Transl Med*. 2015;7:270ra–27276. doi: 10.1126/scitranslmed.3010134
34. Jansweijer JA, Nieuwhof K, Russo F, Hoorntje ET, Jongbloed JD, Lekanne Deprez RH, Postma AV, Bronk M, van Rijsingen IA, de Haij S, et al. Truncating titin mutations are associated with a mild and treatable form of dilated cardiomyopathy. *Eur J Heart Fail*. 2017;19:512–521. doi: 10.1002/ehfj.673
35. Merlo M, Sinagra G, Carniel E, Slavov D, Zhu X, Barbati G, Spezzacatene A, Ramani F, Salcedo E, Di Lenarda A, et al. Poor prognosis of rare sarcomeric gene variants in patients with dilated cardiomyopathy. *Clin Transl Sci*. 2013;6:424–428. doi: 10.1111/cts.12116
36. Hershberger RE, Hedges DJ, Morales A. Dilated cardiomyopathy: the complexity of a diverse genetic architecture. *Nat Rev Cardiol*. 2013;10:531–547. doi: 10.1038/nrcardio.2013.105
37. Pahl E, Sleeper LA, Canter CE, Hsu DT, Lu M, Webber SA, Colan SD, Kantor PF, Everitt MD, Towbin JA, et al. Incidence of and risk factors for sudden cardiac death in children with dilated cardiomyopathy: a report from the pediatric cardiomyopathy registry. *J Am Coll Cardiol*. 2012;59:607–615. doi: 10.1016/j.jacc.2011.10.878
38. Ellepola CD, Knight LM, Fischbach P, Deshpande SR. Genetic testing in pediatric cardiomyopathy. *Pediatr Cardiol*. 2018;39:491–500. doi: 10.1007/s00246-017-1779-2
39. Brown EE, McMillan KN, Halushka MK, Ravekes WJ, Knight M, Crosson JE, Judge DP, Murphy AM. Genetic aetiologies should be considered in paediatric cases of acute heart failure presumed to be myocarditis. *Cardiol Young*. 2019;1:5. 2019;29:917–921. doi: 10.1017/S1047951119001124
40. Belkaya S, Kontorovich AR, Byun M, Mulero-Navarro S, Bajolle F, Cobat A, Josowitz R, Itan Y, Quint R, Lorenzo L, et al. Autosomal recessive cardiomyopathy presenting as acute myocarditis. *J Am Coll Cardiol*. 2017;69:1653–1665. doi: 10.1016/j.jacc.2017.01.04
41. Garcia-Pavia P, Kim Y, Restrepo-Cordoba MA, Lunde IG, Wakimoto H, Smith AM, Toepfer CN, Getz K, Gorham J, Patel P, et al. Genetic variants associated with cancer therapy-induced cardiomyopathy. *Circulation*. 2019;140:31–41. doi: 10.1161/CIRCULATIONAHA.118.037934
42. Butts RJ, Boyle GJ, Deshpande SR, Gambetta K, Knecht KR, Prada-Ruiz CA, Richmond ME, West SC, Lal AK. Characteristics of clinically diagnosed pediatric myocarditis in a contemporary multi-center cohort. *Pediatr Cardiol*. 2017;38:1175–1182. doi: 10.1007/s00246-017-1638-1
43. Hershberger RE, Siegfried JD. Update 2011: clinical and genetic issues in familial dilated cardiomyopathy. *J Am Coll Cardiol*. 2011;57:1641–1649. doi: 10.1016/j.jacc.2011.01.015
44. Gran F, Fidalgo A, Dolader P, Garrido M, Navarro A, Izquierdo-Blasco J, Balcells J, Codina-Sola M, Fernandez-Alvarez P, Sabaté-Rotés A, et al. Differences between genetic dilated cardiomyopathy and myocarditis in children presenting with severe cardiac dysfunction. *Eur J Pediatr*. 2022;181:287–294. doi: 10.1007/s00431-021-04175-z
45. Seidel F, Holtgrewe M, Al-Wakeel-Marquard N, Oppgen-Rhein B, Dartsch J, Herbst C, Beule D, Pickardt T, Klingel K, Messroghli D, et al. Pathogenic variants associated with dilated cardiomyopathy predict outcome in pediatric myocarditis. *Circ Genom Precis Med*. 2021;14:e003250. doi: 10.1161/CIRCGEN.120.003250
46. Ingles J, Goldstein J, Thaxton C, Caleshu C, Corty EW, Crowley SB, Dougherty K, Harrison SM, McGlaughon J, Milko LV, et al. Evaluating the clinical validity of hypertrophic cardiomyopathy genes. *Circ Genom Precis Med*. 2019;12:e002460. doi: 10.1161/CIRCGEN.119.002460
47. Hershberger RE, Hedges DJ, Morales A. Dilated cardiomyopathy: the complexity of a diverse genetic architecture. *Nat Rev Cardiol*. 2013;10:531–547. doi: 10.1038/nrcardio.2013.105
48. Ware SM. Genetic diagnosis in pediatric cardiomyopathy: clinical application and research perspectives. *Prog Pediatr Cardiol*. 2011;31:99–102. doi: 10.1016/j.ppedcard.2011.02.006
49. Morita H, Rehm HL, Menesses A, McDonough B, Roberts AE, Kucherlapati R, Towbin JA, Seidman JG, Seidman CE. Shared genetic causes of cardiac hypertrophy in children and adults. *N Engl J Med*. 2008;358:1899–1908. doi: 10.1056/NEJMoa075463
50. Wilkinson JD, Westphal JA, Bansal N, Czachor JD, Razoky H, Lipshultz SE. Lessons learned from the Pediatric Cardiomyopathy Registry (PCMR) Study Group. *Cardiol Young*. 2015;25:140–153. doi: 10.1017/S1047951115000943
51. Everitt MD, Sleeper LA, Lu MM, Canter CE, Pahl E, Wilkinson JD, Addonizio LJ, Towbin JA, Rossano J, Singh RK, et al. Recovery of echocardiographic function in children with idiopathic dilated cardiomyopathy. *J Am Coll Cardiol*. 2014;63:1405–1413. doi: 10.1016/j.jacc.2013.11.059
52. van der Meulen M, den Boer S, du Marchie Sarvaas GJ, Blom N, Ten Harkel ADJ, Breur H, Rammeloo LAJ, Tanke R, Bogers A, Helbing WA, et al. Predicting outcome in children with dilated cardiomyopathy: the use of repeated measurements of risk factors for outcome. *ESC Heart Fail*. 2021;8:1472–1481. doi: 10.1002/ehf2.13233
53. Richardson P, McKenna W, Bristow M, Maisch B, Mautner B, O'Connell J, Olsen E, Thiene G, Goodwin J, Gyarsas I, et al. Report of the 1995 World Health Organization/International Society and Federation of Cardiology Task Force on the Definition and Classification of cardiomyopathies. *Circulation*. 1996;93:841–842. doi: 10.1161/01.cir.93.5.841
54. Maron BJ, Towbin JA, Thiene G, Antzelevitch C, Corrado D, Arnett D, Moss AJ, Seidman CE, Young JB, American Heart A, et al. Contemporary definitions and classification of the cardiomyopathies: an American Heart Association Scientific Statement from the Council on Clinical Cardiology, Heart Failure and Transplantation Committee; Quality of Care and Outcomes Research and Functional Genomics and Translational Biology Interdisciplinary Working Groups; and Council on Epidemiology and Prevention. *Circulation*. 2006;113:1807–1816. doi: 10.1161/CIRCULATIONAHA.106.174287
55. den Boer SL, Meijer RP, van Iperen GG, Ten Harkel AD, du Marchie Sarvaas GJ, Straver B, Rammeloo LA, Tanke RB, van Kampen JJ, Dalinghaus M. Evaluation of the diagnostic work-up in children with myocarditis and idiopathic dilated cardiomyopathy. *Pediatr Cardiol*. 2015;36:409–416. doi: 10.1007/s00246-014-1022-3
56. Richards S, Aziz N, Bale S, Bick D, Das S, Gastier-Foster J, Grody WW, Hegde M, Lyon E, Spector E, et al. Standards and guidelines for the interpretation of sequence variants: a joint consensus recommendation of the American College of Medical Genetics and Genomics and the Association for Molecular Pathology. *Genet Med*. 2015;17:405–424. doi: 10.1038/gim.2015.30
57. Plon SE, Eccles DM, Easton D, Foulkes WD, Genuardi M, Greenblatt MS, Hogervorst FB, Hoogerbrugge N, Spurdle AB, Tavtigian SV, et al. Sequence variant classification and reporting: recommendations for improving the interpretation of cancer susceptibility genetic test results. *Hum Mutat*. 2008;29:1282–1291. doi: 10.1002/humu.20880