



Universiteit
Leiden
The Netherlands

Evaluation of acute supplementation with the ketone ester (R)-3-Hydroxybutyl-(R)-3-hydroxybutyrate (deltaG) in healthy volunteers by cardiac and skeletal muscle P-31 magnetic resonance spectroscopy

Cameron, D.; Soto-Mota, A.; Willis, D.R.; Ellis, J.; Procter, N.E.K.; Greenwood, R.; ... ; Valkovic, L.

Citation

Cameron, D., Soto-Mota, A., Willis, D. R., Ellis, J., Procter, N. E. K., Greenwood, R., ... Valkovic, L. (2022). Evaluation of acute supplementation with the ketone ester (R)-3-Hydroxybutyl-(R)-3-hydroxybutyrate (deltaG) in healthy volunteers by cardiac and skeletal muscle P-31 magnetic resonance spectroscopy. *Frontiers In Physiology*, 13.
doi:10.3389/fphys.2022.793987

Version: Publisher's Version
License: [Creative Commons CC BY 4.0 license](https://creativecommons.org/licenses/by/4.0/)
Downloaded from: <https://hdl.handle.net/1887/3567591>

Note: To cite this publication please use the final published version (if applicable).



Evaluation of Acute Supplementation With the Ketone Ester (R)-3-Hydroxybutyl-(R)-3-Hydroxybutyrate (deltaG) in Healthy Volunteers by Cardiac and Skeletal Muscle ³¹P Magnetic Resonance Spectroscopy

OPEN ACCESS

Edited by:

Jimin Ren,
The University of Texas Southwestern
Medical Center, United States

Reviewed by:

Jeremy Gordon,
University of California,
San Francisco, United States
Michael Nelson,
The University of Texas at Arlington,
United States

*Correspondence:

Donnie Cameron
Donnie.Cameron@uea.ac.uk

Specialty section:

This article was submitted to
Medical Physics and Imaging,
a section of the journal
Frontiers in Physiology

Received: 12 October 2021

Accepted: 05 January 2022

Published: 31 January 2022

Citation:

Cameron D, Soto-Mota A, Willis DR, Ellis J, Procter NEK, Greenwood R, Saunders N, Schulte RF, Vassiliou VS, Tyler DJ, Schmid AI, Rodgers CT, Malcolm PN, Clarke K, Frenneaux MP and Valkovič L (2022) Evaluation of Acute Supplementation With the Ketone Ester (R)-3-Hydroxybutyl-(R)-3-Hydroxybutyrate (deltaG) in Healthy Volunteers by Cardiac and Skeletal Muscle ³¹P Magnetic Resonance Spectroscopy. *Front. Physiol.* 13:793987. doi: 10.3389/fphys.2022.793987

Donnie Cameron^{1,2*}, Adrian Soto-Mota³, David R. Willis¹, Jane Ellis⁴, Nathan E. K. Procter¹, Richard Greenwood⁵, Neil Saunders⁵, Rolf F. Schulte⁶, Vassilios S. Vassiliou¹, Damian J. Tyler^{3,4}, Albrecht Ingo Schmid^{4,7}, Christopher T. Rodgers^{4,8}, Paul N. Malcolm⁵, Kieran Clarke³, Michael P. Frenneaux¹ and Ladislav Valkovič^{4,9}

¹ Norwich Medical School, University of East Anglia, Norwich, United Kingdom, ² Department of Radiology, C.J. Gorter Center for High-Field MRI, Leiden University Medical Center, Leiden, Netherlands, ³ Department of Physiology, Anatomy and Genetics, University of Oxford, Oxford, United Kingdom, ⁴ Division of Cardiovascular Medicine, Radcliffe Department of Medicine, Oxford Centre for Clinical Magnetic Resonance Research, University of Oxford, Oxford, United Kingdom, ⁵ Radiology Department, Norfolk and Norwich University Hospital, Norwich, United Kingdom, ⁶ GE Healthcare, Munich, Germany, ⁷ High Field MR Center, Center for Medical Physics and Biomedical Engineering, Medical University of Vienna, Vienna, Austria, ⁸ Department of Clinical Neurosciences, Wolfson Brain Imaging Centre, University of Cambridge, Cambridge, United Kingdom, ⁹ Department of Imaging Methods, Institute of Measurement Science, Slovak Academy of Sciences, Bratislava, Slovakia

In this acute intervention study, we investigated the potential benefit of ketone supplementation in humans by studying cardiac phosphocreatine to adenosine-triphosphate ratios (PCr/ATP) and skeletal muscle PCr recovery using phosphorus magnetic resonance spectroscopy (³¹P-MRS) before and after ingestion of a ketone ester drink. We recruited 28 healthy individuals: 12 aged 23–70 years for cardiac ³¹P-MRS, and 16 aged 60–75 years for skeletal muscle ³¹P-MRS. Baseline and post-intervention resting cardiac and dynamic skeletal muscle ³¹P-MRS scans were performed in one visit, where 25 g of the ketone monoester, deltaG[®], was administered after the baseline scan. Administration was timed so that post-intervention ³¹P-MRS would take place 30 min after deltaG[®] ingestion. The deltaG[®] ketone drink was well-tolerated by all participants. In participants who provided blood samples, post-intervention blood glucose, lactate and non-esterified fatty acid concentrations decreased significantly (−28.8%, $p \ll 0.001$; −28.2%, $p = 0.02$; and −49.1%, $p \ll 0.001$, respectively), while levels of the ketone body D-beta-hydroxybutyrate significantly increased from mean (standard deviation) 0.7 (0.3) to 4.0 (1.1) mmol/L after 30 min ($p \ll 0.001$). There were no significant changes in cardiac PCr/ATP or

skeletal muscle metabolic parameters between baseline and post-intervention. Acute ketone supplementation caused mild ketosis in blood, with drops in glucose, lactate, and free fatty acids; however, such changes were not associated with changes in ³¹P-MRS measures in the heart or in skeletal muscle. Future work may focus on the effect of longer-term ketone supplementation on tissue energetics in groups with compromised mitochondrial function.

Keywords: ketone monoester, ketone bodies, phosphorus MRS, ³¹P-MRS, heart, skeletal muscle, 3T, 7T

INTRODUCTION

Cardiac and skeletal muscle function declines with age, impairing quality of life in older individuals in a vicious cycle of decreased physical activity and muscle loss. Reduced myocardial function can promote physical inactivity, leading, in turn, to skeletal muscle dysfunction, and this becomes yet more pronounced in cardiac pathologies such as chronic heart failure. Even in relatively healthy older adults, the progressive loss of skeletal muscle mass and overall diminished strength with ageing can eventually develop into sarcopenia (Cruz-Jentoft et al., 2010), a condition estimated to affect up to 10% of the global population (Shafiee et al., 2017). The causes of this phenomenon are multi-factorial: hormonal changes with age, denervation of neuromuscular junctions, increased adiposity of skeletal muscle, and inflammatory infiltration, oxidation, or glycation of actin and myosin filaments may all contribute to the development of sarcopenia (Degens, 2007; Cruz-Jentoft et al., 2010; Walston, 2012; Marty et al., 2017; Shafiee et al., 2017). The emergence of overt mitochondrial dysfunction with ageing is also a distinct feature of cardiac and skeletal muscle dysregulation. Studies in mice have shown that declining skeletal muscle functional capacity with age is correlated with mitochondrial dysfunction, with uncoupled mitochondrial respiration, increased reactive oxygen species generation, and altered glucose homeostasis being more apparent in older animals (Jang et al., 2010; Lee et al., 2010). In older humans, loss of skeletal muscle mitochondrial function is correlated with diminished physical function (Joseph et al., 2012). Uncoupled mitochondrial respiration has also been documented in heart failure, (Neubauer, 2007) particularly when circulating free-fatty acid concentrations are high.

Ketone monoesters represent a promising substrate for addressing the energetic impairments of pathologies such as heart failure and sarcopenia, offering an exogenous, rapidly available alternative to fatty acids or carbohydrates. The importance of nutrition in ameliorating sarcopenia has been recognised (Welch et al., 2019), and the therapeutic benefits of ketogenic diets and nutritional ketosis have been examined in the context of this disease (Merra et al., 2016; Sammarco et al., 2017), but studies in sarcopenia to date have not assessed mitochondrial function. Furthermore, whereas typical dietary interventions take several days to produce useful levels of ketone bodies, similar blood concentrations can now be reached within 30 min through ingestion of the ketone monoester, (*R*)-3-hydroxybutyl (*R*)-3-hydroxybutyrate. These exogenous ketones have been shown to improve cardiac metabolic efficiency and endurance in rats (Sato et al., 1995;

Murray et al., 2016), as well as the intramuscular energy balance during exercise in humans with a fatty acid oxidation disorder (Bleeker et al., 2020), as assessed by phosphorus magnetic resonance spectroscopy (³¹P-MRS). Indeed, ³¹P-MRS represents an ideal non-invasive modality for assessing the effects of pharmaceutical interventions on tissue bioenergetics *in vivo*. Primary metabolic parameters assessed by ³¹P-MRS in muscle tissue—namely, the cardiac phosphocreatine to adenosine triphosphate ratio (PCr/ATP) and the rate of recovery of intramuscular PCr after exercise—have been linked to mitochondrial health (Fabbri et al., 2017; Zane et al., 2017). Further, similarly to cardiac PCr/ATP (Esterhammer et al., 2014), the skeletal muscle PCr recovery rate has also been shown to decline with age, with a marked impairment in pre-frail older adults (Andreux et al., 2018).

In this acute intervention study, we used ³¹P-MRS to investigate the potential benefit of nutritional ketone supplementation in both younger and older adults by studying changes in cardiac PCr/ATP and skeletal muscle PCr recovery following exercise, before and after ingestion of a ketone ester drink.

METHODS

Study Population

For cardiac MRS, 12 healthy adults (6 male and 6 female), mean age (range) = 38 (23–70) years were recruited via advertisements displayed at the University of Oxford and on the John Radcliffe Hospital website. For skeletal muscle MRS, a total of 16 older adults (10 male and 6 female), mean age (range) = 67 (60–75) years were recruited through advertisements posted on public notice boards in the Norfolk community. Participants were asked to fast for 24 h prior to their visit, in order to increase free-fatty acids in blood, but they were encouraged to drink water. Exclusion criteria included: chronic clinical diseases such as cardiovascular disease, diabetes, renal impairment, neurological disorders, or diseases that may affect motor or cognitive function, except for hypertension and hyperlipidaemia; contraindications for undergoing magnetic resonance imaging and spectroscopy; and participation in ketogenic diets.

The cardiac protocol was preregistered at the ISRCTN (15716557) and approved by the Medical Sciences Interdivisional Research Ethics Committee of the University of Oxford (R50081/RE001). Skeletal muscle procedures were approved by the East of England – Cambridge Central Research

Ethics Committee (18/EE/0111). Written informed consent was obtained in all cases and all study activities complied with the Declaration of Helsinki.

Study Design

This study was designed as a single-arm clinical study where baseline and post-intervention ^{31}P -MRS were performed in one visit. Subjects underwent either cardiac MRS or skeletal muscle MRS, but not both. After the baseline scan, each subject drank 25 mL of ketone ester, (*R*)-3-hydroxybutyl (*R*)-3-hydroxybutyrate (deltaG[®], TΔS Limited, Thame, United Kingdom), timed so that the post-intervention ^{31}P -MRS acquisition would take place 30 min after ingestion of deltaG[®], when βHB concentrations were near maximal (Stubbs et al., 2017).

Blood Metabolic Changes

Cardiac MRS participants gave their first blood sample immediately prior to drinking the ketone ester and undergoing the second scan. The second blood sample was obtained at the end of the second scan, approximately 40 min after participants drank the ketone monoester. Plasma from these blood samples was obtained by centrifugation and analysed for blood glucose, lactate, non-esterified fatty acids, and the ketone body D-beta-hydroxybutyrate using a commercial semi-automated bench-top analyser (ABX Pentra, Montpellier, France).

Muscle Strength

Skeletal muscle MRS participants underwent muscle strength testing prior to MR procedures, to determine suitable ankle weights for exercise ^{31}P -MRS. Maximum quadriceps muscle strength was defined as the highest of three consecutive values of torque (Nm) measured by left-leg knee extensor contraction at a knee flexion of 90° using a hand-held dynamometer (Lafayette Manual Muscle Testing System Model-01165, Lafayette Instrument Company, Lafayette, IN, United States). Torque was determined as the force generated during knee extension multiplied by the distance from the centre of the knee to the point where the dynamometer was applied to the tibia.

Phosphorus Magnetic Resonance Spectroscopy

Cardiac MR experiments. Cardiac ^{31}P -MRS scans were performed on a whole body 7 Tesla Magnetom MR scanner (Siemens Healthineers, Erlangen, Germany) following procedures described previously by Ellis et al. (2019). Subjects were scanned head-first supine. A 10 cm ^1H transmit/receive loop coil (Rapid Biomedical, Rimpfing, Germany) was used to acquire two-chamber, four-chamber and mid-short-axis spoiled gradient-recalled echo stacks of localiser cine images. The ^1H coil was then replaced with a 16-element ^{31}P array coil (Rapid Biomedical) consisting of a single rectangular 28 cm² × 27 cm² transmit loop and a 4 × 4 matrix of 16 circular flexible receive loops, each 5.5 cm in diameter. The ^{31}P coil was placed in the same position as the ^1H coil, above the interventricular septum. Serial, non-localised inversion-recovery acquisitions were performed for the post-hoc determination of transmit efficiency, using measurements from a

central spherical phenylphosphonic acid (PPA) fiducial mounted on the coil housing. Custom MATLAB code was then used to determine the coil position from three orthogonal, single-channel ^{31}P spoiled gradient-recalled echo images, localising five PPA fiducials including the centre fiducial used for B₁ determination. B₀ shimming was performed using a custom algorithm, described by Ellis et al. (2019). A short 3D ultra-short echo time chemical shift imaging (CSI) sequence was used for signal localisation, with the following parameters: repetition time = 1 s; field-of-view = 200 mm³ × 240 mm³ × 200 mm³; matrix size = 8 × 16 × 8; nominal voxel size = 9.4 mL; flip angle at interventricular septum = approximately 30°; shaped radiofrequency excitation pulse with bandwidth = 2,000 Hz; acquisition weighting with 4 averages at *k* = 0; and whitened singular value decomposition (WSVD) coil combination. The CSI grid was planned on a short-axis view of the heart, with the in-plane matrix parallel to the chest wall. The CSI matrix was fixed at the point of acquisition, and not shifted in post-processing. In order to minimise skeletal muscle signal contamination, a 25 mm thick, B₁-insensitive train to obliterate signal (BISTRO) saturation band was placed in the anterior chest wall (Luo et al., 2001). The excitation pulse was centred at +266 Hz relative to PCr to cover metabolites from 2,3-diphosphoglycerate (2,3-DPG) to γ-ATP. Respiratory gating and ECG triggering were not used. The total time per exam, including participant set-up, cardiac imaging, and ^{31}P -MRS, was approximately 30 min.

Skeletal muscle MR experiments. All skeletal muscle ^{31}P -MRS was performed on a 3 tesla MR750w MRI scanner (GE Healthcare, Milwaukee, WI, United States) equipped with a 15 cm transmit-receive loop coil tuned to phosphorus (PulseTeq, Surrey, United Kingdom). Participants were positioned feet-first and supine with the loop coil fastened over their right vastus lateralis, using hook-and-loop straps, midway between the greater trochanter and lateral femoral epicondyle. Participants were then shifted laterally to place the right thigh close to the magnet's isocentre, and additional hook-and-loop straps were applied to their knees to limit gross displacements during the scan. An inversion-recovery fast-spin-echo localiser was applied to verify that the cluster of three fiducials at the centre of the coil was positioned over the vastus lateralis. Then, after manual first-order B₀ shimming, a non-localised ^{31}P -MRS acquisition was performed with a Bloch-Siegert preparation pulse, provided as part of the MNS Research Pack (GE Healthcare, Munich, Germany), to determine the transmit gain needed to achieve a 90° excitation (Schulte et al., 2011). Exercise MRS was applied using a similar design to that described by Sleight et al. (2016a). Briefly, the 12-min protocol consisted of two bouts, each comprising a 1-min rest period, a 1-min exercise period, and a 4-min post-exercise recovery period. The pulse-acquire ^{31}P -MRS acquisition ran continuously over this 12-min protocol with the following sequence parameters: 240 dynamics with a repetition time = 3 s, spectral bandwidth = 2,250 Hz, 2,048 sampled points, a resonance frequency offset of 50 Hz, and block excitation with a flip angle of 90°. The total time per exam, including participant set-up, and skeletal muscle imaging and ^{31}P -MRS, was approximately 40 min. Participants

were given at least a 30-min break between baseline and post-intervention exams to minimise any effect of fatigue on post-intervention PCr recovery.

Post-processing

Cardiac muscle spectra. Cardiac spectra from the midseptal voxel were fitted using the Oxford Spectroscopy Analysis (OXSA) toolbox—a MATLAB implementation of the AMARES fitting algorithm (Purvis et al., 2017). The fitted peaks, and their estimated chemical shifts, were: PCr at 0 ppm, γ -ATP at -2.48 ppm, and 2,3-diphosphoglyceric acid (2,3-DPG) at 5.4 and 6.4 ppm. The reported cardiac PCr/ATP values were calculated using the γ -ATP signal, corrected for blood signal contamination via subtraction of 15% of the total 2,3-DPG signal from the measured γ -ATP amplitudes (Rodgers et al., 2014), and corrected for partial saturation using relaxation times from the literature (Rodgers et al., 2014). Saturation factors were also adjusted for the actual flip angle in the interventricular septum, which was determined from coil position and transmit efficiency measures using the Biot-Savart law. Cramér-Rao lower bounds (CRLBs) were used to express the uncertainty in metabolite concentrations.

Skeletal muscle spectra. Skeletal muscle data were processed using an in-house software pipeline written in MATLAB (2018a, The Mathworks, Natick, MA, United States) and based on a previously-described routine for processing static ³¹P spectra (Cameron et al., 2019). Briefly, the pipeline comprised 15 Hz Lorentzian line-broadening, two-times zero-filling, zero- and first-order phase correction, frequency and phase alignment of individual dynamic spectra (Chen et al., 2002; Wiegers et al., 2017), and averaging of spectra in blocks of three. Each series of 80 spectra was then piped into the AMARES algorithm from jMRUI (version 3.0)¹ (Vanhamme et al., 1997; Naressi et al., 2001; Stefan et al., 2009), where residual phase errors were corrected, and all metabolite signals were fitted and their amplitudes and chemical shifts calculated: PCr at 0 ppm, γ -ATP at -2.41 ppm, α -ATP at -7.51 ppm, β -ATP at -16 ppm, phosphodiester (PDE) at 3 ppm, and inorganic phosphate (Pi) at 5.1 ppm. PCr breakdown during exercise was determined, and its recovery after exercise cessation was fitted using a mono-exponential rise to a maximum, as follows:

$$\text{PCr}(t) = \text{PCr}_e - \Delta\text{PCr} \cdot \exp^{-t/\tau_{\text{PCr}}} \quad (1)$$

where PCr_e is the post-recovery PCr signal, ΔPCr is the difference between the post-recovery and end-of-exercise PCr signals, and τ_{PCr} is the time constant of PCr resynthesis. Cytosolic pH was also estimated for each time-point of the dynamic ³¹P series using the Henderson-Hasselbalch equation:

$$\text{pH} = 6.75 + \log\left(\frac{\delta - 3.27}{5.63 - \delta}\right) \quad (2)$$

where δ is the chemical shift between Pi and PCr. Acidosis was deemed to have occurred if the pH during exercise

dropped by more than 0.2 units from the baseline value (Meyerspeer et al., 2020).

Further exercise MRS measures were calculated using the parameters derived above, including the initial PCr recovery rate:

$$V_{\text{PCr}} = \Delta\text{PCr}/\tau_{\text{PCr}} \quad (3)$$

the free adenosine diphosphate concentration:

$$[\text{ADP}] = \left\{ \left(\frac{[\text{TCr}]}{[\text{PCr}]} - 1 \right) \cdot [\text{ATP}] / \left(K [\text{H}^+] \right) \right\} \quad (4)$$

where the equilibrium constant $K = 1.66 \times 10^9$ L/mol, $[\text{H}^+] = 10^{-\text{pH}}$, and $[\text{ATP}]$ and total creatine $[\text{TCr}] = 8.2$ and 42.5 mmol/L cellular water, respectively (Kemp et al., 2007); and the maximal rate of oxidative ATP synthesis:

$$Q_{\text{max}} = (V_{\text{PCr}} + Q_{\text{B}}) \left\{ 1 + \left(K_{\text{m}} / [\text{ADP}]_{\text{end_exercise}} \right)^n \right\} \quad (5)$$

where K_{m} is the $[\text{ADP}]$ at the half-maximal oxidation rate, assumed to be $30 \mu\text{M}$ (Kemp and Radda, 1994), Q_{B} is the basal rate of ATP turnover, estimated at 0.04 mM/s (Jenkinson et al., 2009), and n is the Hill coefficient.

Rest spectra were generated by averaging data from the initial one-minute rest period prior to exercise, for both baseline and post-intervention scans. Fitted peak intensities were relaxation-corrected using T_1 values reported by Bogner et al. (2009), and metabolite concentrations were quantified, again assuming an ATP concentration of 8.2 mM/L cellular water (Kemp et al., 2007). Further, ratios of Pi to PCr and PCr to total phosphate were also calculated, where the latter represents the total area under all defined resonances in the spectrum: namely, Pi, PDE, PCr, and the three ATP resonances.

Sample Size

Our preliminary work led to the hypothesis that ingestion of 25 g of the ketone ester (*R*)-3-hydroxybutyl (*R*)-3-hydroxybutyrate would lead to an increase of 22 and 15% in the primary outcome measures, cardiac PCr/ATP and skeletal muscle τ_{PCr} , respectively. For cardiac experiments, the variance of PCr/ATP at 7 tesla was assumed to be 22%, based on work by Ellis et al. (2019). Thus, for a Type I error rate, $\alpha = 0.05$, and a Type II error rate, $\beta = 0.2$ —namely, 80% power—a sample size of $n = 12$ was required to reject the null hypothesis. Based on the results of Sleigh et al. (2016a), whose work formed the basis of our exercise ³¹P-MRS protocol, a variance of 10% or less was assumed for skeletal muscle τ_{PCr} . Selecting a Type I error rate, $\alpha = 0.05$, and a Type II error rate, $\beta = 0.05$ —namely, 95% power—a sample size of $n = 12$ would be sufficient to reject the null hypothesis. To allow for drop-outs and technical issues, this recruitment target was increased to $n = 16$. Sample sizes were calculated using G*Power software (version 3.1, Heinrich-Heine-Universität Düsseldorf, Düsseldorf, Germany).

Statistical Analysis

All statistical analyses were performed in R (Version 3, R Foundation for Statistical Computing, Vienna, Austria) and

¹<https://web.archive.org/web/20211011011850/http://jmrui.eu/>

Microsoft Excel (Microsoft, Redmond, WA, United States). Data were tested for normality using the Shapiro-Wilk test. Differences between groups were assessed using two-sided Student's *t*-tests when data were normally distributed and Mann-Whitney *U* tests when they were not, and correlations with age were explored using Pearson's *r*. A *p*-value less than 0.05 was considered statistically significant in all analyses.

RESULTS

For cardiac experiments, a total of 12 participants were enrolled, with no exclusions. Of the 16 participants recruited for skeletal muscle MRS, the ³¹P-MRS datasets of four were excluded due to hardware failure and a further two were discarded due to insufficient PCr breakdown. Participant demographics, after exclusions, are shown in **Table 1**. Ingestion of the deltaG[®] ketone drink was well-tolerated by all participants. There were no reports of nausea or lower intestinal complaints, such as intestinal cramps or diarrhoea. **Figure 1** shows representative data from the cardiac and skeletal muscle examinations.

Blood Metabolic Changes

In the subset of participants who provided blood samples (*n* = 12), post-intervention blood glucose, lactate, and non-esterified fatty acid concentrations were significantly lower than pre-intervention values: mean (SD) = 5.00 (1.01) vs 3.56 (0.66) mmol/L, *p* << 0.001; 1.84 (0.45) vs 1.32 (0.32), *p* = 0.02; and 1.08 (0.32) vs 0.55 (0.20) mmol/L, *p* << 0.001, respectively. Blood levels of the ketone body D-beta-hydroxybutyrate were significantly higher after the intervention: mean (SD) = 0.73 (0.32) vs 3.98 (1.07) mmol/L, *p* << 0.001. These changes are represented graphically by line plots shown in **Figure 2** (top row).

Cardiac Muscle Experiments

Cardiac ³¹P-MRS results are listed in **Table 2** and shown graphically in **Figure 2** (middle row). CRLBs for all spectra were less than 15% on average. There was no statistically-significant difference in cardiac PCr/ATP post-intervention relative to the pre-intervention value.

Cardiac phosphorus MRS parameters versus age. Relationships between cardiac PCr/ATP and age were explored using Pearson's *r*. There was no correlation between PCr/ATP and age at baseline (*r* = -0.43, *p* = 0.16) and neither was there a correlation between change in PCr/ATP and age (*r* = 0.21, *p* = 0.52).

Skeletal Muscle Experiments

All ³¹P-MRS-derived parameters for skeletal muscle are shown in **Table 2**, and selected parameters are illustrated in line plots in **Figure 2** (middle and bottom rows). There were no statistically significant differences in the means of any ³¹P-MRS parameters post-intervention relative to pre-intervention. No datasets appeared to show acidosis, either pre- or post-intervention.

Skeletal muscle phosphorus MRS parameters versus age. There were no statistically-significant correlations between baseline tau PCr and age or change in tau PCr and age shown by Pearson's *r* (*r* = 0.03, *p* = 0.93; and *r* = 0.47, *p* = 0.17, respectively). There were also no correlations observed between: baseline [PCr] and age or change in [PCr] and age (*r* = -0.31, *p* = 0.38; and *r* = -0.18, *p* = 0.62, respectively); baseline V_{PCr} or change in V_{PCr} and age (*r* = -0.10, *p* = 0.79; and *r* = -0.34, *p* = 0.33); or baseline Q_{max} or change in Q_{max} and age (*r* = 0.41, *p* = 0.28; and *r* = -0.36, *p* = 0.34).

DISCUSSION

In this study we conducted an acute intervention of a single ketone ester drink in a cohort of healthy adults, where cardiac and skeletal muscle high-energy phosphate metabolism was monitored via ³¹P-MRS immediately before, and 30 min after, ketone administration. Post-intervention, we saw significantly increased blood concentrations of the ketone body D-beta-hydroxybutyrate and a significant decrease in concentrations of glucose, lactate, and non-esterified fatty acids. However, we did not observe any statistically-significant post-intervention changes in cardiac PCr/ATP ratios, or in skeletal muscle PCr recovery rates or metabolite ratios.

One of the primary strengths of this study was the use of ³¹P-MRS, which is a sensitive and widely-used method for assessing cardiac and skeletal muscle energetics. We used established protocols for both cardiac and skeletal muscle ³¹P-MRS, taking particular care with regards to repeatability aspects. For cardiac ³¹P-MRS, we elected to avoid cardiac triggering and respiratory gating to maintain consistent repetition times and avoid unpredictable extensions to scan time. Our assessment of cardiac PCr/ATP was done based on the mid-septal voxel signal, which has been shown to give the most reproducible results (Ellis et al., 2019). For the skeletal muscle ³¹P-MRS protocol, we averaged the results of two exercise bouts together to improve the precision of our exercise MRS measures, in line with the findings of Sleigh et al. (2016a). Thus, taking these considerations into account, it is unlikely that the absence of significant differences in ³¹P-MRS parameters pre- and post-intervention was due to a lack of measurement power (Ellis et al., 2019).

The results we show here may indicate that the previously observed haemodynamic benefits of ketone supplementation (Sato et al., 1995; Nielsen et al., 2019) are not necessarily caused by an increased availability of ATP, but rather by improved efficiency of its utilisation. Veech has theorised that ketone bodies have a more electronegative character than other metabolites, having more hydrogen atoms per carbon (Veech, 2004). This

TABLE 1 | Participant characteristics.

	Cardiac cohort	Skeletal muscle cohort
Sex	6 male, 6 female	5 male, 5 female
Age, years	38.0 [23–70]	67.3 [60–75]
Height, cm	175 (9)	171 (13)
Weight, kg	69.8 (11.7)	74.1 (12.6)
BMI, kg/m ²	22.9 (2.3)	24.8 (4.2)
Knee extension strength, N·m	–	134 (51.6)

Data are expressed as mean (standard deviation) or mean [range].

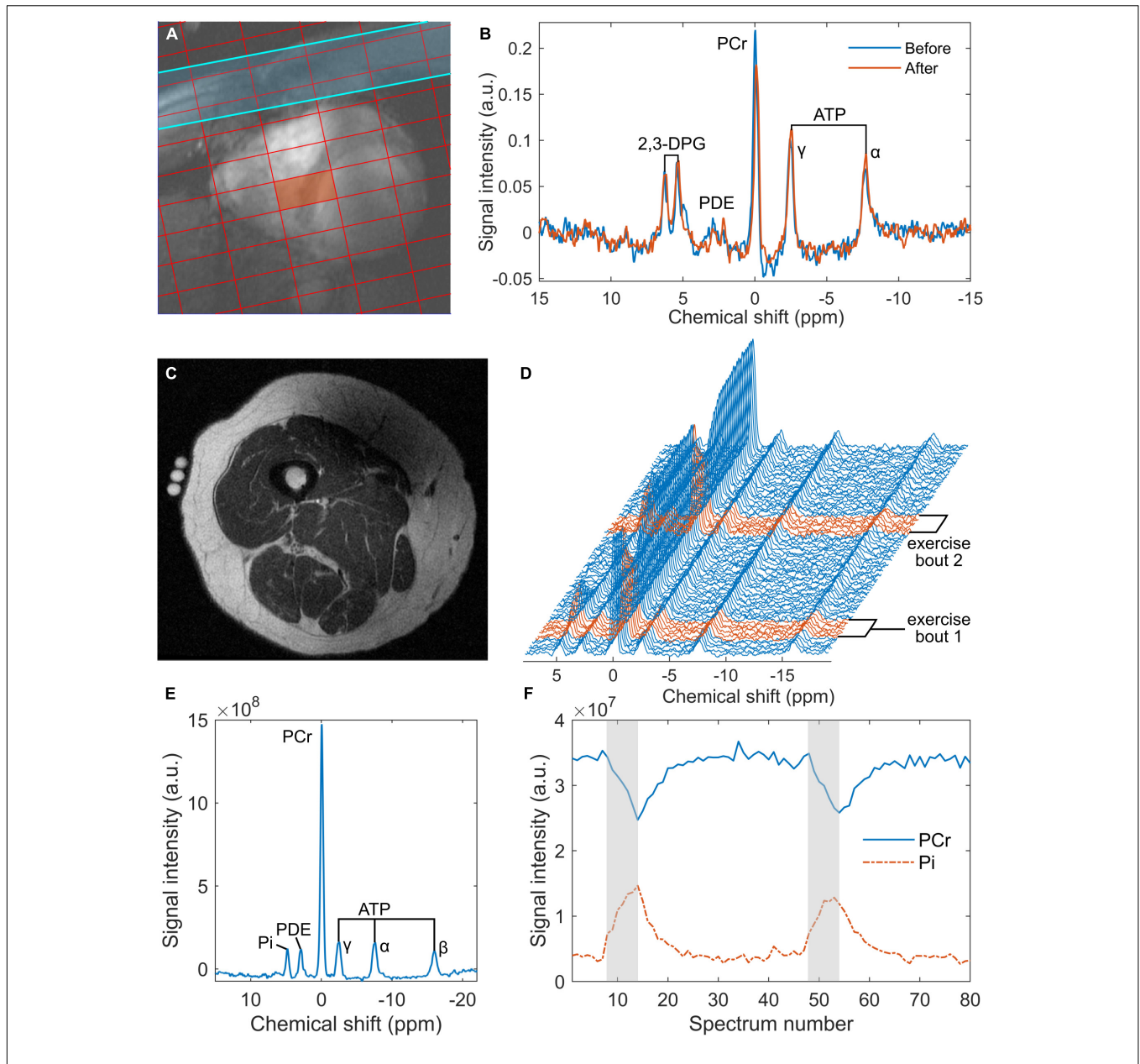
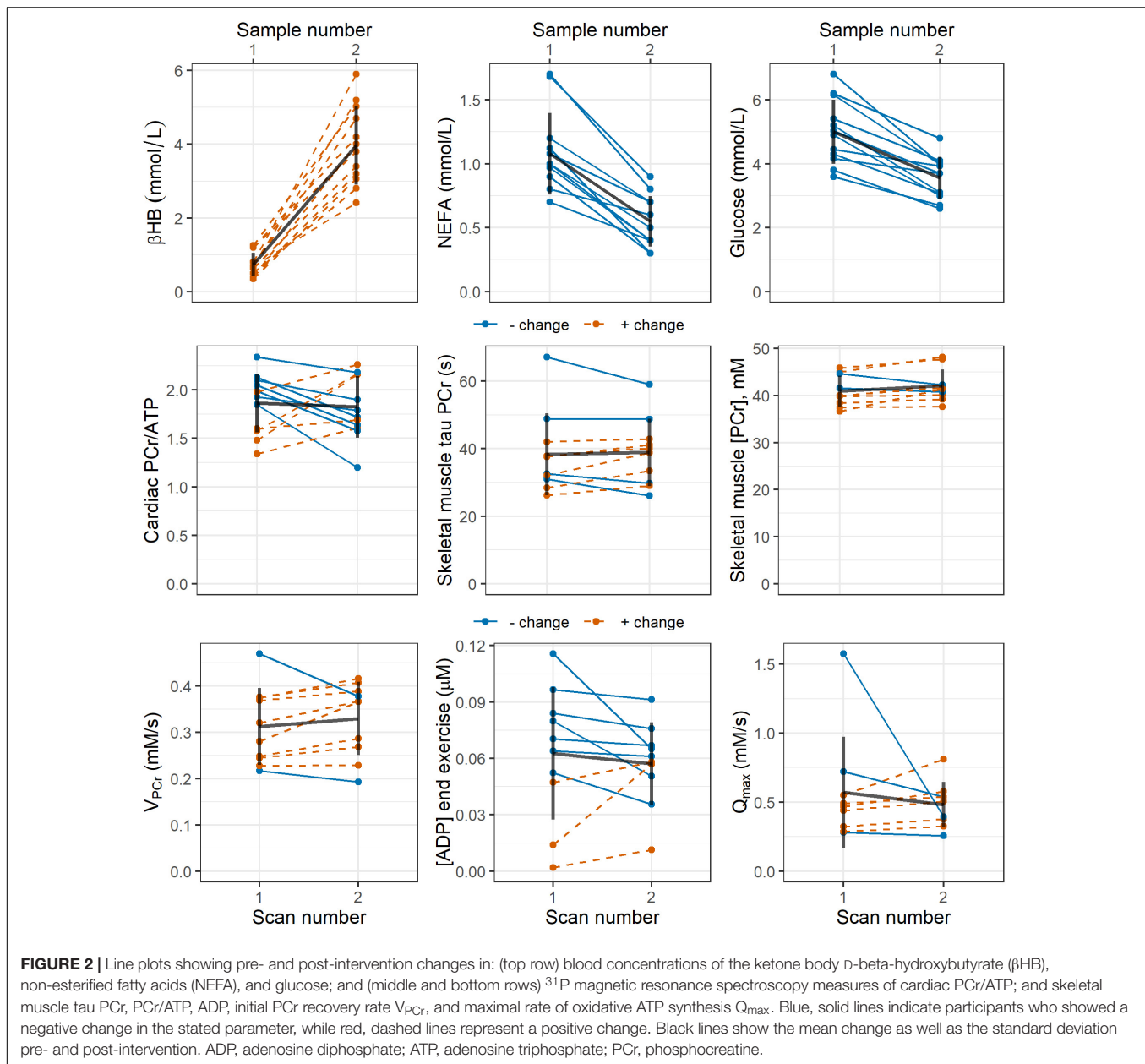


FIGURE 1 | Representative data from the 7 tesla ^{31}P cardiac magnetic resonance spectroscopy (MRS) acquisition (**A,B**) and the 3 tesla skeletal muscle acquisition (**C–F**): (**A**) an example of localisation showing a chemical shift imaging grid superimposed on a short-axis, spoiled gradient-recalled echo cine image of the heart, where the red rectangle denotes the voxel of interest and the blue strip represents a saturation band used to suppress signal from skeletal muscle; (**B**) cardiac ^{31}P spectra obtained from the septal voxel shown in **a**, pre- and post-intervention ('Before' and 'After', respectively); (**C**) an inversion recovery fast spin echo localiser image of a participant's right thigh, showing fiducials at the centre of the 15 cm ^{31}P coil positioned over the vastus lateralis; (**D**) a series of 80 ^{31}P spectra averaged in groups of 3 from the 240 spectra acquired during rest and exercise—exercise spectra are highlighted in red; (**E**) an average rest spectrum obtained during the one-minute rest period at the beginning of the ^{31}P -MRS acquisition; and (**F**) time courses of phosphocreatine (PCr) and inorganic phosphate (Pi) derived from peak fitting of the dynamic spectra from panel (**D**), with exercise periods indicated in grey. ATP, adenosine triphosphate; a.u., arbitrary units; 2,3-DPG, 2,3-diphosphoglyceric acid; PCr, phosphocreatine; PDE, phosphodiester.

could allow them to produce a larger proton gradient and, therefore, more efficient utilisation of ATP. This hypothesis could potentially be investigated *in vivo* using saturation transfer experiments at rest and during exercise. Such experiments can assess changes in Pi-to-ATP exchange rates due to increased workload (Sleigh et al., 2016b; Tušek Jelenc et al., 2016). Further

exercise ^{31}P -MRS analyses could also be performed to calculate the ΔG of ATP hydrolysis (Fiedler et al., 2016). Regardless, the fact that we show no post-intervention differences in ^{31}P -MRS measures should not be interpreted as indicating a lack of potential benefits of long-term supplementation, or a lack of efficacy, because our participants were healthy volunteers and



supplementation in heart failure patients has already proven to be beneficial (Nielsen et al., 2019). These considerations are also supported by a 1.5 tesla ^{31}P -MRS study by Bleeker et al., who showed an increase in skeletal muscle Pi/PCr in patients deficient in very-long-chain acyl-CoA dehydrogenase after acute ketone supplementation (Bleeker et al., 2020), and a similar result was also seen in canine myocardium in an earlier study by Kim et al. (1991). As in this work, Bleeker and colleagues did not show changes in post-exercise PCr recovery after the ketone intervention. In contrast to the study design of Bleeker et al., participants in our study were asked to fast for 24 h prior to their visit to maximise blood levels of D-beta-hydroxybutyrate by reducing competition from other energy substrates in meals (Stubbs et al., 2017). In terms of

the timing of our ^{31}P -MRS procedures relative to ingestion of the deltaG[®] drink, both we and Bleeker et al. administered the intervention 30 min prior to the scan (Bleeker et al., 2020). This timing was based on work by Stubbs et al. (2017), who showed that blood levels of D-beta-hydroxybutyrate reach a maximum between 30 and 60 min after administration—an interval that coincides with the data acquisition in our study. Nielsen et al. (2019) used a 3-h infusion of βHB salt as their intervention; however, this is not directly comparable to the approach we show here, as our deltaG[®] drink is a food and, therefore, cannot be infused.

Based on previous data, we anticipated increases in the primary cardiac and skeletal muscle outcome measures, PCr/ATP and τ_{PCr} , respectively, as a result of our acute ketone

TABLE 2 | Cardiac and skeletal muscle ³¹P-MRS parameters, pre- and post-intervention.

	Pre-intervention	Post-intervention	Mean difference	p-value
Cardiac ³¹P-MRS				
PCr/ATP	1.86 (0.30)	1.83 (0.32)	-0.04 (0.42)	0.75
Skeletal muscle ³¹P-MRS				
Mean τ _{PCr} , s	38.4 (12.2)	38.9 (10)	0.53 (4.63)	0.92
Mean PCr breakdown, %	32.5 (9.10)	34.4 (10.2)	1.90 (3.00)	0.67
V _{PCr} , mM/s	0.31 (0.10)	0.33 (0.08)	0.02 (0.05)	0.29
[ADP] end exercise, μM	62.6 (35.2)	57.2 (21.9)	-5.3 (24.9)	0.52
Q _{max} , mM/s	0.57 (0.40)	0.48 (0.40)	-0.09 (0.42)	0.55
Resting [PCr], mM	40.9 (3.26)	42.1 (3.41)	1.18 (2.04)	0.44
Resting [Pi], mM	4.64 (1.18)	4.75 (1.20)	0.11 (1.07)	0.84
Resting [PDE], mM	7.04 (1.40)	7.04 (1.27)	0 (0.88)	0.99
Resting Pi/PCr	0.12 (0.02)	0.13 (0.01)	0 (0.02)	0.59
Resting PCr/Total-phosphate	0.53 (0.02)	0.54 (0.02)	0.01 (0.01)	0.5
Resting pH	7.19 (0.24)	7.21 (0.15)	0.02 (0.13)	0.82

The p-values listed were obtained from two-sided Student's t-tests. Data are represented as mean (SD).

ATP, adenosine triphosphate; PCr, phosphocreatine; PDE, phosphodiester; Pi, inorganic phosphate; Q_{max}, maximal rate of oxidative ATP synthesis; τ_{PCr}, time constant of PCr resynthesis; V_{PCr}, initial rate of PCr resynthesis.

ester intervention. The rationale for this was based on the fact that fatty acids are the natural ligand of peroxisome proliferator-activated receptor alpha (PPARα), which upregulates the transcription of uncoupling protein 3 (UCP3), which, in turn, uncouples the mitochondrial membrane and reduces ATP production in the myocardium (Villarroya et al., 2007). Notably PCr/ATP correlates with free-fatty acid blood concentration (Scheuermann-Freestone et al., 2003), and plasma free-fatty acid concentrations correlate with uncoupling protein expression in the myocardium (Murray et al., 2004). Given the electronegative advantage of ketone bodies (Veech, 2004), we hypothesized that acute ketosis could improve free-fatty-acid-induced uncoupling and increase ATP concentrations, which could be detected with ³¹P-MRS. However, we were unable to show the expected positive results in ³¹P-MRS measures, despite the ketosis in blood in the studied participants. Since our study was powered to detect the anticipated positive effects—a 22% increase in cardiac PCr/ATP and a 15% increase in skeletal muscle τ_{PCr}—we cannot rule out much smaller positive, or negative, effects. Our findings should serve as guidance in terms of possible effect sizes, while our study design and methodology will form a useful template for future investigations. Indeed, it is also worth noting here that the synthetic ketone ester we used was well-tolerated in the acute setting, in line with findings from a recent safety study on long-term ketone supplementation (Soto-Mota et al., 2019). This supports longer-term supplementation in future studies, which could also be monitored via ³¹P-MRS.

There are some limitations to the work reported here. We calculated metabolite concentrations in skeletal muscle

based on an assumed ATP concentration of 8.2 mM, whereas ATP concentrations possibly decrease with age. However, we expect this change to be relatively consistent in our group of older participants, and intra-individual comparisons, pre-versus post-intervention, are not affected. Indeed, our theory that ketone supplementation leads to increased efficiency of ATP utilisation, and not increased ATP availability, lends itself to this assumption. Another possible limitation is that participants were not selected based on their level of physical fitness. Deconditioned individuals are expected to benefit more from ketone supplementation due to energetic deficits, manifesting as longer PCr recovery time constants and lower cardiac and skeletal muscle PCr/ATPs. Future studies could target older participants who demonstrate some of the hallmarks of frailty, as assessed by grip strength, walking speed, and physical performance batteries.

In conclusion, acute supplementation with a ketone ester drink in healthy volunteers caused mild ketosis in blood, with a concomitant drop in glucose, lactate, and free fatty acids; however, we were not able to detect an effect on ultra-high-field ³¹P-MRS measures in the heart, or in high-field MRS in resting and exercising skeletal muscle. Future work should focus on the effect of longer-term ketone supplementation on cardiac and muscle energetics, particularly in groups with compromised mitochondrial function.

DATA AVAILABILITY STATEMENT

The raw data supporting the conclusions of this article will be made available by the authors, without undue reservation.

ETHICS STATEMENT

The studies involving human participants were reviewed and approved by the Medical Sciences Interdivisional Research Ethics Committee of the University of Oxford and the East of England - Cambridge Central Research Ethics Committee. The participants provided their written informed consent to participate in this study.

AUTHOR CONTRIBUTIONS

DC, AS-M, JE, NP, AS, CR, MF, KC, and LV: study conception and design. DC, AS-M, DW, JE, RG, and NS: acquisition of data. DC, AS-M, JE, and CR: analysis and interpretation of data. DC, AS-M, JE, NP, KC, and LV: drafting of manuscript. All authors: critical revision.

FUNDING

This study was funded by a combination of seed funding awarded to DC by Norwich Medical School, University of East Anglia, funding from TdeltaS, Ltd., and funding from the Wellcome Trust (#221805/Z/20/Z and #098436/Z/12/B). For the purpose

of Open Access, the author has applied a CC BY public copyright licence to any author accepted manuscript version arising from this submission. LV is a Sir Henry Dale Fellow supported jointly by the Wellcome Trust and the Royal Society (#221805/Z/20/Z), and he also acknowledges the support of the Slovak Grant Agencies VEGA (#2/0003/20) and APVV (#19-0032). AS was supported by The Austrian Science Fund (FWF)

REFERENCES

- Andreux, P. A., van Diemen, M. P. J., Heezen, M. R., Auwerx, J., Rinsch, C., Groeneveld, G. J., et al. (2018). Mitochondrial function is impaired in the skeletal muscle of pre-frail elderly. *Sci. Rep.* 8(1):8548. *Corrected Sci. Rep.* (2019) 9:17821. doi: 10.1038/s41598-018-26944-x
- Bleeker, J. C., Visser, G., Clarke, K., Ferdinandusse, S., de Haan, F. H., Houtkooper, R. H., et al. (2020). Nutritional ketosis improves exercise metabolism in patients with very long-chain acyl-CoA dehydrogenase deficiency. *J. Inherit. Metab. Dis.* 43, 787–799. doi: 10.1002/jimd.12217
- Bogner, W., Chmelik, M., Schmid, A. I., Moser, E., Trattinig, S., and Gruber, S. (2009). Assessment of 31P relaxation times in the human calf muscle: a comparison between 3 T and 7 T in vivo. *Magn. Reson. Med.* 62, 574–582. doi: 10.1002/mrm.22057
- Cameron, D., Welch, A. A., Adelnia, F., Bergeron, C. M., Reiter, D. A., Dominguez, L. J., et al. (2019). Age and muscle function are more closely associated with intracellular magnesium, as assessed by 31P magnetic resonance spectroscopy, than with serum magnesium. *Front. Physiol.* 10:1454. doi: 10.3389/fphys.2019.01454
- Chen, L., Weng, Z., Goh, L., and Garland, M. (2002). An efficient algorithm for automatic phase correction of NMR spectra based on entropy minimization. *J. Magn. Reson.* 158, 164–168. doi: 10.1016/S1090-7807(02)00069-1
- Cruz-Jentoft, A. J., Baeyens, J. P., Bauer, J. M., Boirie, Y., Cederholm, T., Landi, F., et al. (2010). Sarcopenia: European consensus on definition and diagnosis: report of the European working group on sarcopenia in older people. *Age Ageing* 39, 412–423. doi: 10.1093/ageing/afq034
- Degens, H. (2007). Age-related skeletal muscle dysfunction: causes and mechanisms. *J. Musculoskelet. Neuronal Interact.* 7, 246–252.
- Ellis, J., Valkovič, L., Purvis, L. A. B., Clarke, W. T., and Rodgers, C. T. (2019). Reproducibility of human cardiac phosphorus MRS (31P-MRS) at 7 T. *NMR Biomed.* 32:e4095. doi: 10.1002/nbm.4095
- Esterhammer, R., Klug, G., Wolf, C., Mayr, A., Reinstadler, S., Feistritz, H. J., et al. (2014). Cardiac high-energy phosphate metabolism alters with age as studied in 196 healthy males with the help of 31-phosphorus 2-dimensional chemical shift imaging. *PLoS One* 9:e97368. doi: 10.1371/journal.pone.0097368
- Fabbri, E., Chia, C. W., Spencer, R. G., Fishbein, K. W., Reiter, D. A., Cameron, D., et al. (2017). Insulin resistance is associated with reduced mitochondrial oxidative capacity measured by 31P-magnetic resonance spectroscopy in participants without diabetes from the Baltimore Longitudinal Study of Aging. *Diabetes* 66, 170–176. doi: 10.2337/db16-0754
- Fiedler, G. B., Schmid, A. I., Goluch, S., Schewzow, K., Laistler, E., Niess, F., et al. (2016). Skeletal muscle ATP synthesis and cellular H(+) handling measured by localized (31)P-MRS during exercise and recovery. *Sci. Rep.* 6:32037. doi: 10.1038/srep32037
- Jang, Y. C., Lustgarten, M. S., Liu, Y., Muller, F. L., Bhattacharya, A., Liang, H., et al. (2010). Increased superoxide in vivo accelerates age-associated muscle atrophy through mitochondrial dysfunction and neuromuscular junction degeneration. *FASEB J.* 24, 1376–1390. doi: 10.1096/fj.09-146308
- Jeneson, J. A., Schmitz, J. P., van den Broek, N. M., van Riel, N. A., Hilbers, P. A., Nicolay, K., et al. (2009). Magnitude and control of mitochondrial sensitivity to ADP. *Am. J. Physiol. Endocrinol. Metab.* 297, E774–E784. doi: 10.1152/ajpendo.00370.2009
- Joseph, A. M., Adhithetty, P. J., Buford, T. W., Wohlgemuth, S. E., Lees, H. A., Nguyen, L. M., et al. (2012). The impact of aging on mitochondrial function and biogenesis pathways in skeletal muscle of sedentary high- and low-functioning elderly individuals. *Aging Cell* 11, 801–809. doi: 10.1111/j.1474-9726.2012.00844.x
- Schrödinger Fellowship (J 4043). CR is funded by a Sir Henry Dale Fellowship from the Wellcome Trust and the Royal Society (#098436/Z/12/B) and acknowledges support from the NIHR Cambridge Biomedical Research Centre (BRC-1215-20014). DT was funded by a Senior Research Fellowship from the British Heart Foundation (FS/19/18/34252). JE was funded by the Medical Research Council.
- Kemp, G. J., and Radda, G. K. (1994). Quantitative interpretation of bioenergetic data from 31P and 1H magnetic resonance spectroscopic studies of skeletal muscle: an analytical review. *Magn. Reson. Q.* 10, 43–63.
- Kemp, G. J., Meyerspeer, M., and Moser, E. (2007). Absolute quantification of phosphorus metabolite concentrations in human muscle in vivo by 31P MRS: a quantitative review. *NMR Biomed.* 20, 555–565. doi: 10.1002/nbm.1192
- Kim, D. K., Heineman, F. W., and Balaban, R. S. (1991). Effects of beta-hydroxybutyrate on oxidative metabolism and phosphorylation potential in canine heart in vivo. *Am. J. Physiol. Heart Circ. Physiol.* 260, H1767–H1773. doi: 10.1152/ajpheart.1991.260.6.H1767
- Lee, H. Y., Choi, C. S., Birkenfeld, A. L., Alves, T. C., Jornayvay, F. R., Jurczak, M. J., et al. (2010). Targeted expression of catalase to mitochondria prevents age-associated reductions in mitochondrial function and insulin resistance. *Cell Metab.* 12, 668–674. doi: 10.1016/j.cmet.2010.11.004
- Luo, Y., de Graaf, R. A., DelaBarre, L., Tannús, A., and Garwood, M. B. I. S. T. R. O. (2001). An outer-volume suppression method that tolerates RF field inhomogeneity. *Magn. Reson. Med.* 45, 1095–1102. doi: 10.1002/mrm.1144
- Marty, E., Liu, Y., Samuel, A., Or, O., and Lane, J. (2017). A review of sarcopenia: enhancing awareness of an increasingly prevalent disease. *Bone* 105, 276–286. doi: 10.1016/j.bone.2017.09.008
- Merra, G., Miranda, R., Barrucco, S., Gualtieri, P., Mazza, M., Moriconi, E., et al. (2016). Very-low-calorie ketogenic diet with aminoacid supplement versus very low restricted-calorie diet for preserving muscle mass during weight loss: a pilot double-blind study. *Eur. Rev. Med. Pharmacol. Sci.* 20, 2613–2621.
- Meyerspeer, M., Boesch, C., Cameron, D., Dezortová, M., Forbes, S. C., Heerschap, A., et al. (2020). ³¹P magnetic resonance spectroscopy in skeletal muscle: experts' consensus recommendations. *NMR Biomed.* 34:e4246. doi: 10.1002/nbm.4246
- Murray, A. J., Anderson, R. E., Watson, G. C., Radda, G. K., and Clarke, K. (2004). Uncoupling proteins in human heart. *Lancet* 364, 1786–1788. doi: 10.1016/S0140-6736(04)17402-3
- Murray, A. J., Knight, N. S., Cole, M. A., Cochlin, L. E., Carter, E., Tchabanenko, K., et al. (2016). Novel ketone diet enhances physical and cognitive performance. *FASEB J.* 30, 4021–4032. doi: 10.1096/fj.201600773R
- Naressi, A., Couturier, C., Devos, J., Janssen, M., Mangeat, C., De Beer, R., et al. (2001). Java-based graphical user interface for the MRUI quantitation package. *Magn. Reson. Mater. Phys. Biol. Med.* 12:141. doi: 10.1016/s1352-8661(01)00111-9
- Neubauer, S. (2007). The failing heart — an engine out of fuel. *New Engl. J. Med.* 356, 1140–1151. doi: 10.1056/NEJMr063052
- Nielsen, R., Møller, N., Gormsen, L. C., Tolbod, L. P., Hansson, N. H., Sorensen, J., et al. (2019). Cardiovascular effects of treatment with the ketone body 3-hydroxybutyrate in chronic heart failure patients. *Circulation* 139, 2129–2141. doi: 10.1161/CIRCULATIONAHA.118.036459
- Purvis, L. A. B., Clarke, W. T., Biasioli, L., Valkovič, L., Robson, M. D., and Rodgers, C. T. O. X. S. A. (2017). An open-source magnetic resonance spectroscopy analysis toolbox in MATLAB. *PLoS One* 12:e0185356. doi: 10.1371/journal.pone.0185356
- Rodgers, C. T., Clarke, W. T., Snyder, C., Vaughan, J. T., Neubauer, S., and Robson, M. D. (2014). Human cardiac 31P magnetic resonance spectroscopy at 7 Tesla. *Magn. Reson. Med.* 72, 304–315. doi: 10.1002/mrm.24922
- Sammarco, R., Marra, M., Di Guglielmo, M. L., Naccarato, M., Contaldo, F., Poggiogalle, E., et al. (2017). Evaluation of hypocaloric diet with protein

- supplementation in middle-aged sarcopenic obese women: a pilot study. *Obes. Facts* 10, 160–167. doi: 10.1159/000468153
- Sato, K., Kashiwaya, Y., Keon, C. A., Tsuchiya, N., King, M. T., Radda, G. K., et al. (1995). Insulin, ketone bodies, and mitochondrial energy transduction. *FASEB J.* 9, 651–658. doi: 10.1096/fasebj.9.8.7768357
- Scheuermann-Freestone, M., Madsen, P. L., Manners, D., Blamire, A. M., Buckingham, R. E., Styles, P., et al. (2003). Abnormal cardiac and skeletal muscle energy metabolism in patients with type 2 diabetes. *Circulation* 107, 3040–3046. doi: 10.1161/01.cir.0000072789.89096.10
- Schulte, R. F., Sacolick, L., Deppe, M. H., Janich, M. A., Schwaiger, M., Wild, J. M., et al. (2011). Transmit gain calibration for nonproton MR using the Bloch–Siegert shift. *NMR Biomed.* 24, 1068–1072. doi: 10.1002/nbm.1657
- Shafiee, G., Keshkar, A., Soltani, A., Ahadi, Z., Larjani, B., and Heshmat, R. (2017). Prevalence of sarcopenia in the world: a systematic review and meta-analysis of general population studies. *J. Diabet. Metab. Disord.* 16:21. doi: 10.1186/s40200-017-0302-x
- Sleigh, A., Lupson, V., Thankamony, A., Dunger, D. B., Savage, D. B., Carpenter, T. A., et al. (2016a). Simple and effective exercise design for assessing in vivo mitochondrial function in clinical applications using ³¹P magnetic resonance spectroscopy. *Sci. Rep.* 6:19057. doi: 10.1038/srep19057
- Sleigh, A., Savage, D. B., Williams, G. B., Porter, D., Carpenter, T. A., Brindle, K. M., et al. (2016b). ³¹P magnetization transfer measurements of Pi→ATP flux in exercising human muscle. *J. Appl. Physiol.* 120, 649–656. doi: 10.1152/japplphysiol.00871.2015
- Soto-Mota, A., Vansant, H., Evans, R. D., and Clarke, K. (2019). Safety and tolerability of sustained exogenous ketosis using ketone monoester drinks for 28 days in healthy adults. *Regul. Toxicol. Pharmacol.* 109:104506. doi: 10.1016/j.yrtph.2019.104506
- Stefan, D., Di Cesare, F., Andrasescu, A., Popa, E., Lazariev, A., Vescovo, E., et al. (2009). Quantitation of magnetic resonance spectroscopy signals: the jMRUI software package. *Meas. Sci. Technol.* 20:104035. doi: 10.1088/0957-0233/20/10/104035
- Stubbs, B. J., Cox, P. J., Evans, R. D., Santer, P., Miller, J. J., Faull, O. K., et al. (2017). On the metabolism of exogenous ketones in humans. *Front. Physiol.* 8:848. doi: 10.3389/fphys.2017.00848
- Tušek Jelenc, M., Chmelik, M., Bogner, W., Krššák, M., Trattnig, S., and Valkovič, L. (2016). Feasibility and repeatability of localized (³¹P)-MRS four-angle saturation transfer (FAST) of the human gastrocnemius muscle using a surface coil at 7 T. *NMR Biomed.* 29, 57–65. doi: 10.1002/nbm.3445
- Vanhamme, L., van den Boogaart, A., and Van Huffel, S. (1997). Improved method for accurate and efficient quantification of MRS data with use of prior knowledge. *J. Magn. Reson.* 129, 35–43. doi: 10.1006/jmre.1997.1244
- Veech, R. L. (2004). The therapeutic implications of ketone bodies: the effects of ketone bodies in pathological conditions: ketosis, ketogenic diet, redox states, insulin resistance, and mitochondrial metabolism. *Prostaglandins Leukot. Essent. Fatty Acids* 70, 309–319. doi: 10.1016/j.plefa.2003.09.007
- Villarroya, F., Iglesias, R., and Giral, M. (2007). PPARs in the control of uncoupling proteins gene expression. *PPAR Res.* 2007:74364. doi: 10.1155/2007/74364
- Walston, J. D. (2012). Sarcopenia in older adults. *Curr. Opin. Rheumatol.* 24, 623–627. doi: 10.1097/BOR.0b013e328358d59b
- Welch, A. A., Hayhoe, R. P. G., and Cameron, D. (2019). The relationships between sarcopenic skeletal muscle loss during ageing and macronutrient metabolism, obesity and onset of diabetes. *Proc. Nutr. Soc.* 79, 158–169. doi: 10.1017/S0029665119001150
- Wieggers, E. C., Philips, B. W. J., Heerschap, A., and van der Graaf, M. (2017). Automatic frequency and phase alignment of in vivo J-difference-edited MR spectra by frequency domain correlation. *Magn. Reson. Mater. Phys. Biol. Med.* 30, 537–544. doi: 10.1007/s10334-017-0627-y
- Zane, A. C., Reiter, D. A., Shardell, M., Cameron, D., Simonsick, E. M., Fishbein, K. W., et al. (2017). Muscle strength mediates the relationship between mitochondrial energetics and walking performance. *Aging Cell* 16, 461–468. doi: 10.1111/acel.12568

Author Disclaimer: The views expressed are those of the author(s) and not necessarily those of the NIHR or the Department of Health and Social Care.

Conflict of Interest: RS is employed by GE Healthcare. The intellectual property covering the uses of ketones and ketone esters is owned by BTG Ltd., the University of Oxford, the National Institutes of Health, and TΔS Ltd. Should royalties ever accrue from these patents, KC, as an inventor, will receive a share of the royalties under the terms proscribed by Oxford University. KC is a director of TΔS Ltd., a company spun out of the University of Oxford to develop and commercialise products based on the science of ketone bodies in human nutrition.

The remaining authors declare that the research was conducted in the absence of any commercial or financial relationships that could be construed as a potential conflict of interest.

Publisher's Note: All claims expressed in this article are solely those of the authors and do not necessarily represent those of their affiliated organizations, or those of the publisher, the editors and the reviewers. Any product that may be evaluated in this article, or claim that may be made by its manufacturer, is not guaranteed or endorsed by the publisher.

Copyright © 2022 Cameron, Soto-Mota, Willis, Ellis, Procter, Greenwood, Saunders, Schulte, Vassiliou, Tyler, Schmid, Rodgers, Malcolm, Clarke, Frenneaux and Valkovič. This is an open-access article distributed under the terms of the Creative Commons Attribution License (CC BY). The use, distribution or reproduction in other forums is permitted, provided the original author(s) and the copyright owner(s) are credited and that the original publication in this journal is cited, in accordance with accepted academic practice. No use, distribution or reproduction is permitted which does not comply with these terms.