



Universiteit
Leiden
The Netherlands

Preterm birth, long-term outcome: how an early start affects school-aged children

Jansen, L.

Citation

Jansen, L. (2023, April 12). *Preterm birth, long-term outcome: how an early start affects school-aged children*. Retrieved from <https://hdl.handle.net/1887/3594098>

Version: Publisher's Version

License: [Licence agreement concerning inclusion of doctoral thesis in the Institutional Repository of the University of Leiden](#)

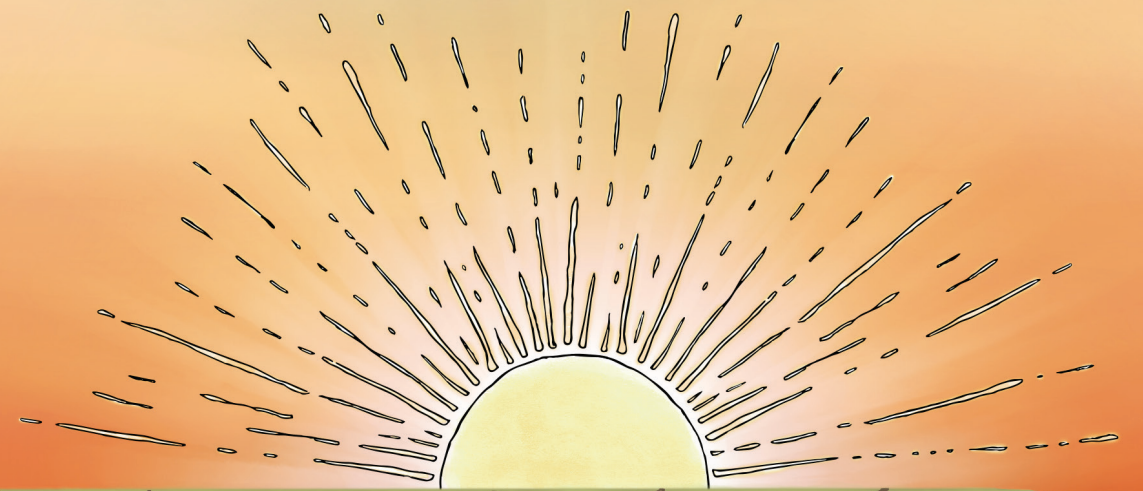
Downloaded from: <https://hdl.handle.net/1887/3594098>

Note: To cite this publication please use the final published version (if applicable).

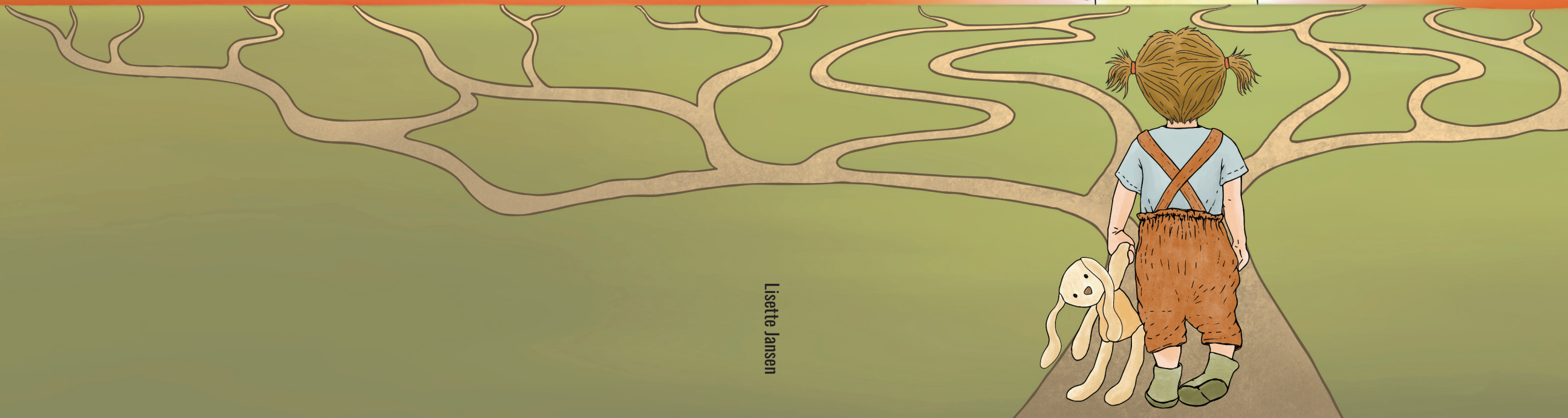
PRETERM BIRTH, LONG-TERM OUTCOME:

How an early start affects school-aged children

Lisette Jansen



PRETERM BIRTH, LONG-TERM OUTCOME: How an early start affects school-aged children



Lisette Jansen