



Universiteit
Leiden
The Netherlands

Immunotherapy in advanced melanoma: crossing borders

Kooij, M.K. van der

Citation

Kooij, M. K. van der. (2023, March 30). *Immunotherapy in advanced melanoma: crossing borders*. Retrieved from <https://hdl.handle.net/1887/3589872>

Version: Publisher's Version

License: [Licence agreement concerning inclusion of doctoral thesis in the Institutional Repository of the University of Leiden](#)

Downloaded from: <https://hdl.handle.net/1887/3589872>

Note: To cite this publication please use the final published version (if applicable).

Metastatic Uveal Melanoma: Treatment Strategies and Survival – Results From the Dutch Melanoma Treatment Registry

Cancers 2019; 11, 1007

Anouk Jochems, Monique K. van der Kooij, Marta Fiocco,
Maartje G. Schouwenburg, Maureen J. Aarts, Alexander C. van Akkooi,
Franchette W.P.J. van den Berkmortel, Christian U. Blank,
Alfonsus J.M. van den Eertwegh, Margreet G. Franken, Jan Willem B. de Groot,
John B.A.G. Haanen, Geke A.P. Hospers, Rutger H. Koornstra, Wim H.J. Kruit,
Marieke Louwman, Djura Piersma, Rozemarijn S. van Rijn,
Karijn P.M. Suijkerbuijk, Albert J. ten Tije, Gerard Vreugdenhil, Michel W.J.M. Wouters,
Michiel C.T. van Zeijl, Koos J.M. van der Hoeven, Ellen Kapiteijn

Abstract

Uveal melanoma (UM) is the most common primary intraocular tumor in adults. Up to 50% of UM patients will develop metastases. We present data of 175 metastatic UM patients diagnosed in the Netherlands between July 2012 and March 2018. In our cohort, elevated lactate dehydrogenase level (LDH) is an important factor associated with poorer survival (Hazard Ratio (HR) 9.0, 95% Confidence Interval (CI) 5.63-14.35), and the presence of liver metastases is negatively associated with survival (HR 2.09, 95%CI 1.07-4.08). We used data from the nation-wide Dutch Melanoma Treatment Registry (DMTR) providing a complete overview of the location of metastases at time of stage IV disease. In 154 (88%) patients, the liver was affected, and only 3 patients were reported to have brain metastases. In 63 (36%) patients, mutation analysis was performed, showing a GNA11 mutation in 28.6% and a GNAQ mutation in 49.2% of the analyzed patients. In the absence of standard care of treatment options, metastatic UM patients are often directed to clinical trials. Patients participating in clinical trials are often subject to selection and usually do not represent the entire metastatic UM population. By using our nation-wide cohort, we are able to describe real-life treatment choices made in metastatic UM patients and 1-year survival rates in selected groups of patients.

Introduction

Uveal melanoma (UM) is the most common primary intraocular tumor in adults and arises from the melanocytes residing in the stroma^(1,2). Between 2012 and 2018, the incidence of primary uveal melanoma was approximately 200 new cases per year in the Netherlands⁽³⁾. European data on the incidence of primary uveal melanoma report 4.4 cases per million in Europe⁽⁴⁾. Among all intraocular melanomas, choroidal melanomas occur most frequently (80-90% of cases), but tumors may also develop in the iris or ciliary body⁽²⁾. The diagnosis of uveal melanoma is based on non-invasive testing techniques, such as funduscopy or ultrasound, performed by an experienced clinician. Ocular treatment of uveal melanoma consists of enucleation (“radical treatment”) or radiotherapy, usually in the form of plaque brachytherapy or proton radiotherapy (“conservative treatment”)⁽⁵⁾. Management of primary uveal melanoma is guided by the size and location of the tumor, presence of extraocular extension, visual potential and patient age and preference. In selected patients, both treatment modalities show similar survival and risk of metastases, with radiotherapy having the advantage of a better cosmetic result and the possibility of saving vision in the smaller tumors⁽⁶⁾.

Unfortunately, up to 50% of patients with uveal melanoma will ultimately develop metastatic disease. The most frequently affected metastatic site is the liver^(4,6,7). The site of the metastases has an impact on survival; patients with liver metastasis have a poorer prognosis than patients with extrahepatic metastasis^(8,9). Previously, it was thought that there would be no survival advantage in early diagnosis of metastatic disease because of the lack of standard of care therapy for metastatic uveal melanoma. However, patients with early diagnosis of metastatic disease might benefit from liver-directed therapy, which is associated with clinical utility⁽¹⁰⁻¹⁵⁾ or they might benefit from participation in a clinical trial. Under the Dutch and UK uveal melanoma guidelines^(16,17), patients with primary uveal melanoma are therefore advised to have 6-monthly liver function tests in combination with liver-specific imaging by a non-ionizing modality to detect metastatic disease in an earlier phase.

On a molecular level, uveal melanomas differ significantly from cutaneous melanomas. Unlike cutaneous melanoma, uveal melanoma is not characterized by frequent BRAF or NRAS mutations, so that advances in targeted therapy for cutaneous melanoma are not applicable to metastatic uveal melanoma. Early activating mutations in GNAQ or GNA11 are present in about 80% of primary uveal melanomas. These lead to activation of downstream signaling pathways⁽¹⁸⁾. Inactivating somatic mutations are present in the gene encoding BRCA1-associated protein 1 (BAP1) in more than 80% of metastasizing tumors, implicating a role in the progression of uveal melanoma.⁽¹⁹⁾ Mutations in SF3B1 and EIF1AX in primary uveal melanoma are associated with a

relatively good prognosis^(20,21). Greater understanding of the molecular pathogenesis may provide opportunities for patients who benefit from surveillance and may eventually provide specific targeted therapy for metastatic uveal melanoma patients.

Over the past few years, different treatment strategies have been evaluated in patients with metastatic uveal melanoma. The best responses have been reported with local treatment strategies in patients with exclusive and limited hepatic metastasis in whom surgical resection, isolated hepatic perfusion with melphalan, radiotherapy, radiofrequency ablation or radio-embolization was performed⁽¹⁰⁻¹⁵⁾. In patients with diffuse liver metastases or extensive extrahepatic metastases, systemic therapy is the only treatment strategy available. Several combinations of drugs have been investigated in phase Ib/II/III trials in patients with metastatic uveal melanoma. Until now, none of the systemic treatments with chemotherapy⁽²²⁻²⁴⁾, immune checkpoint inhibitors⁽²⁵⁻³²⁾ or targeted therapy^(33,34), have shown substantial efficacy in metastatic uveal melanoma.

In this article, we present data from our Dutch cohort of metastatic uveal melanoma patients describing affected metastatic sites, mutation analysis, clinical characteristics associated with survival and treatment choices made and the corresponding one-year survival. By describing these groups of patients, we show the impact of clinical characteristics and selecting metastatic UM patients for treatment in our real-life population.

Patients and Methods

Data source

Since 2013, all Dutch metastatic melanoma patients have been referred to one of the 14 melanoma expert centers in the Netherlands. This centralization of metastatic melanoma patients and the registration in the Dutch Melanoma Treatment Registry (DMTR), providing nation-wide coverage retrospectively starting from July 2012, was initiated to assure safety and quality of melanoma care in the Netherlands⁽³⁶⁾. Since the DMTR was set up, all patients with metastatic melanoma have been included in the registry, irrespective of the type of primary melanoma (i.e., cutaneous, uveal, or mucosal melanoma). The DMTR provides aggregated data information on basic patient and tumor characteristics, treatment regimens, grade 3 and 4 treatment related adverse events (according to the Common Terminology Criteria for Adverse Events, version 4.0) and clinical outcomes.

In compliance with Dutch regulations, the DMTR was approved by a medical ethical committee (METC Leiden University Medical Center, 3 September 2013) and is not

considered subject to the Medical Research Involving Human Subjects Act. All data are collected anonymously and only aggregated data are available for research and quality improvements. Data extraction from medical files is performed by data-employees. No informed consent will be signed, but patients are offered an opt-out possibility if they do not want their data registered in the DMTR. For this study, the data cut-off date was 25th March 2018.

Patients

Between July 2012 and March 2018, 227 patients with metastatic uveal melanoma were registered in the DMTR. Patients who received treatment before the DMTR was set up were excluded from analysis (Figure 1). We analyzed 175 treatment-naïve patients according to the type of treatment initiated at first presentation with metastatic disease: i.e., patients could be receiving: (i) systemic therapy, (ii) local treatment, or (iii) no tumor-directed therapy, but best supportive care (BSC). For this manuscript, we analyzed only patients who had their first treatment post July 2012.

Systemic therapy included a variety of regimens with chemotherapy, immune checkpoint inhibitors and targeted drugs. Local treatment strategies included surgical resection, isolated hepatic perfusion with melphalan, radiotherapy, radiofrequency ablation or immune-embolization. Treatment strategies were performed either as standard care or in the context of participation in a clinical trial.

Statistical Analysis

Descriptive statistics were employed to summarize patient baseline characteristics on registration in the DMTR. To test the difference between categorical variables for different treatment strategy groups, a chi-square test was applied (Table 1). A rank-sum test has been used to test the difference between the median time from diagnosis to stage IV disease between groups of patients. Survival from the diagnosis of metastatic disease, was estimated according to Kaplan-Meier's method. Median follow up was computed with reverse Kaplan-Meier method⁽³⁹⁾.

A univariable Cox analysis using variables "age" (age as a continuous variable), "gender" (male versus female), "WHO performance score" (WHO 0-1 vs. WHO ≥ 2), "LDH level" (elevated vs. non-elevated LDH) and the "presence of liver metastases" was performed. Subsequently, a multivariable Cox regression model was estimated, including the variables known to influence survival in metastatic cutaneous melanoma patients. All statistical analyses were conducted using SPSS (SPSS, version 23, IBM Corp. released 2015, Armonk, NY, USA).

Results

Patient Characteristics

Of the 3959 registered patients in the DMTR, a total of 175 metastatic uveal melanoma patients were identified for analysis (Figure 1). Baseline characteristics are presented in Table 1.

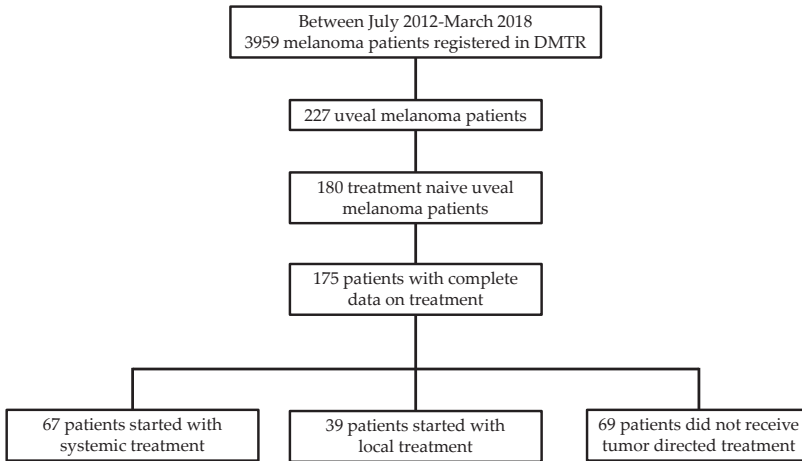


FIGURE 1 Nation-wide cohort of metastatic uveal melanoma patients registered in the Dutch Melanoma Treatment Registry (DMTR): All patients with complete data on treatment were analyzed and subdivided based on the first treatment option when diagnosed with metastatic disease.

The median age of metastatic UM patients in this cohort was 65 years. The majority of patients (74.9%) scored well on the World Health Organization (WHO) performance scale (0-1). Lactate dehydrogenase level (LDH) was elevated in 85 (48.6%) patients (Table 1). The liver was the most affected site: 88% of patients having liver metastases. Other affected sites were the lungs (25.1%), lymph nodes (16%) and bones (15.4%) (Figure 2). Differences in clinical characteristics between the treatment groups are presented in Table 1.

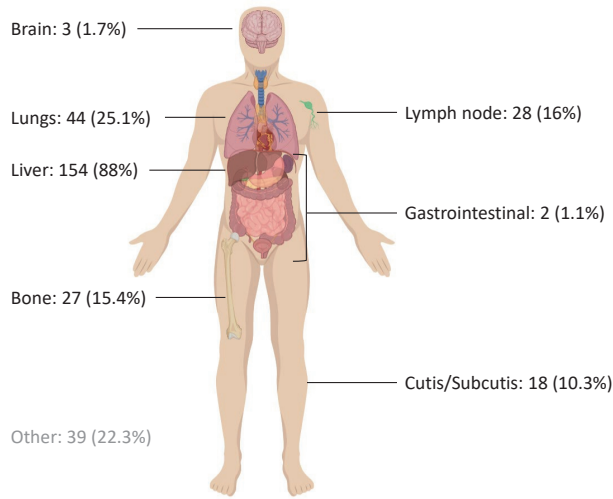


FIGURE 2 Frequency of affected organ in our cohort of patients with metastatic uveal melanoma (more than one organ can be affected).

Mutation Analysis

Molecular analysis of the activating mutation in the GNAQ or GNA11 genes was performed in 63 patients (36%) (Figure 3). The fact that detection of these mutation was of no therapeutic consequence might explain why these genes were not included in a standard NGS panel. In 31 of these 63 (49.2%) patients a mutation in the GNAQ was discovered and in 18 patients (28.6%) a GNA11 mutation was confirmed. These results are consistent with the known literature describing most primary uveal melanoma having a GNAQ or GNA11 mutation^(18,35).

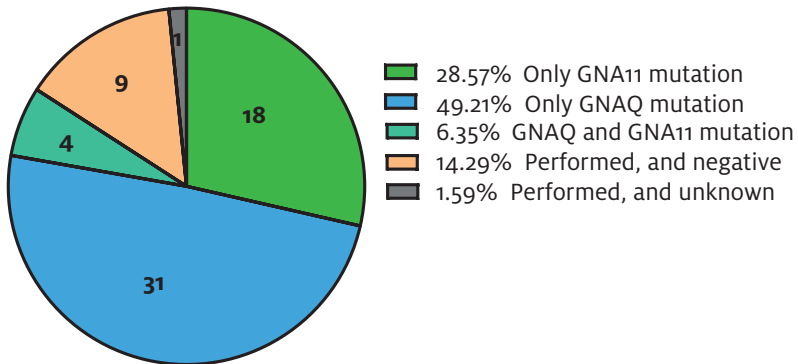


FIGURE 3 Results of molecular analysis of GNAQ/GNA11 mutation. Analysis was performed in 63 of 175 patients (36%).

TABLE 1 Patient characteristics at the moment of diagnosis with metastatic disease.

Patient Characteristics	All patients (n = 175)	Systemic Therapy (n = 67)	Local Therapy (n = 39)	Best Supportive Care (n = 69)	p-value
Age					0.001
Median, years (range)	65 (29-89)	61 (29-80)	61 (41-80)	69 (45-89)	
<65 years (%)	86 (49.1)	39 (58.2)	25 (64.1)	22 (31.9)	
≥65 years (%)	89 (50.9)	28 (41.8)	14 (35.9)	47 (68.1)	
Gender (%)					0.98
Male	88 (50.3)	34 (50.7)	20 (51.3)	34 (49.3)	
Female	87 (49.7)	33 (49.3)	19 (48.7)	35 (50.7)	
WHO performance score (%)					0.000
0	106 (60.6)	55 (82.1)	21 (53.8)	30 (60.6)	
1	25 (14.3)	7 (10.4)	3 (7.7)	15 (21.7)	
2	11 (6.3)	2 (3)	1 (2.6)	8 (11.6)	
3	3 (1.7)	0	0	3 (4.3)	
4	1 (0.6)	0	0	1 (1.4)	
Unknown	29 (16.6)	3 (4.5)	14 (35.9)	12 (17.4)	
Median time from diagnosis primary tumor to stage IV months (range)	38 (0-477)	43 (0-296)	29 (0-477)	42 (0-361)	0.02 *
Brain metastases (%)					
No	169 (96.6)	64 (95.5)	39 (100)	66 (95.7)	
Yes	3 (1.7)	2 (3)	0	1 (1.4)	

Unknown	3 (1.7)	1 (1.5)	0	2 (2.9)	
Liver metastases (%)					0.10
No	20 (11.4)	11 (16.4)	1 (2.6)	8 (11.6)	
Yes	154 (88)	56 (83.6)	38 (97.4)	60 (87)	
Unknown	1 (0.6)	0	0	1 (1.4)	
Metastatic sites (%)					0.002
< 3 metastatic sites	134 (76.6)	44 (65.7)	39 (100)	52 (75.4)	
≥ 3 metastatic sites	31 (17.7)	18 (26.9)	0	13 (18.8)	
Unknown	10 (5.7)	5 (7.5)	0	4 (5.8)	
LDH (%)					0.000
Not elevated	81 (46.3)	37 (55.2)	26 (66.7)	18 (26.1)	
Elevated (250-500)	34 (19.4)	12 (17.9)	9 (23.1)	13 (18.8)	
Elevated (> 500)	51 (29.1)	17 (25.4)	1 (2.6)	33 (47.8)	
Unknown	9 (5.1)	1 (1.5)	3 (7.7)	5 (7.2)	

* A rank-sum test for the median time from diagnosis to stage IV disease was used to test the difference between groups of patients. WHO performance score: World-Health Organization performance score. LDH: lactate dehydrogenase.

Treatment of Metastatic UM Patients

In our study, 67 patients (38.3%) received systemic therapy when diagnosed with metastatic disease. Several systemic drug regimens were applied, both in- and outside a clinical trial setting as there is no standard of care for patients with metastatic uveal melanoma. These regimens consisted of chemotherapy with dacarbazine, immune checkpoint inhibitors or targeted drugs. Several different clinical trials, varying from phase I to phase III trials, were open for patient enrollment at different time windows in the investigated period. All patients receiving a targeted drug participated in a clinical trial; for example, in the NCT01430416 trial (phase I trial with AEB071), NCT01801358 trial (phase 1b/II study with AEB071 + MEK162), NCT01974752 trial (phase 3 trial with selumetinib), or NCT02601378 (phase I trial with LXS196). In addition, patients could be included into the N11RFA trial, a phase II study exploring the combination of ipilimumab with RFA. Fifty-three (79.1%) of 67 patients were treated in a clinical trial as a part of first-line systemic therapy. Some patients received more than one treatment after the failure of first-line therapy. During registration, a total of 108 systemic therapies were given, in total 85 (78.7%) of these treatments were part of participation in a clinical trial (Figure 4).

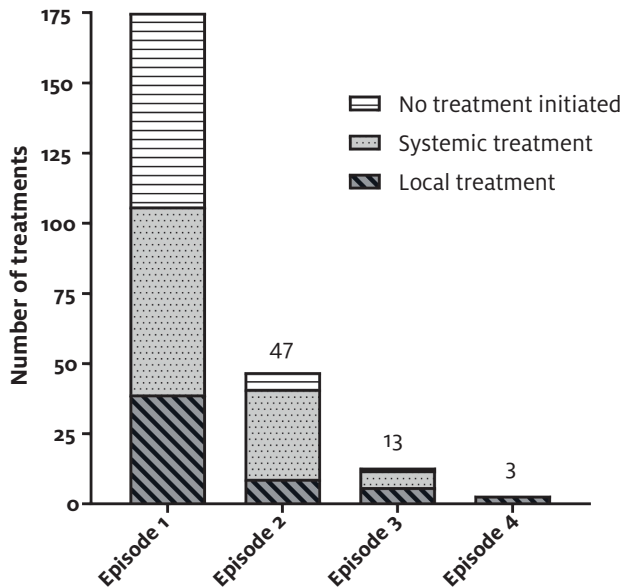


FIGURE 4 Treatment strategies per treatment episode. Some patients received more than one line of treatment after failure of first-line treatment. (treatment episode 1: treatment strategy performed when diagnosed with metastatic uveal melanoma, treatment episode 2: second treatment strategy after failure of first-line treatment etc.).

Sixteen patients received systemic treatment with a checkpoint inhibitor outside a clinical trial setting. Four patients received the anti-CTLA-4 antibody ipilimumab and 12 patients received an anti-PD-1 antibody. One patient was treated with the combination of anti-CTLA-4 and anti-PD-1 therapy. As most patients treated with anti-CTLA-4 antibody were included in a clinical trial (as part of a phase II study exploring the combination of ipilimumab with RFA, EudraCT Number: 2011-004200-38), overall survival data for this group are not yet available. The median OS of these 12 patients treated with an anti-PD-1 antibody was 54.3 weeks, ranging between 6 and 104 weeks. Data on duration of treatment, best overall response and overall survival are shown in Figure 5. Median follow-up computed with reverse Kaplan-Meier was equal to 89 weeks (95% CI 70.76-107.24).

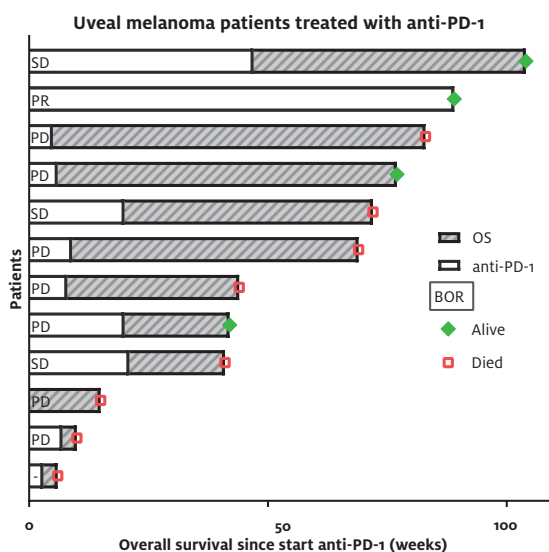


FIGURE 5 Best response and survival of 12 metastatic UM patients treated with an anti-PD-1 antibody (no clinical trial participation).

Thirty-nine patients (22.3%) received local treatment when first diagnosed with metastatic uveal melanoma. These local treatment regimens included surgical resection of metastases, isolated hepatic perfusion with melphalan, radiotherapy, radiofrequency ablation or radio-embolization. Sixty-nine patients (39.4%) did not receive anti-tumor directed therapy but received best supportive care (Figure 1).

Survival

The median follow-up was computed with reverse Kaplan-Meier (where the event indicator is reversed so that the outcome of interest is censored⁽³⁶⁾) and was equal to

120 weeks (95% CI 96.3-143.7). One year after the diagnosis of metastatic uveal melanoma, 47.8% of all patients were alive (95% CI 40.4-55.2). There is a considerable difference in survival at one year among patients belonging to different treatment groups and patients included in the BSC-group. The prognosis at one-year observed in patients receiving systemic therapy or local therapy was 49% (95% CI 37-61) and 82.1% (95% CI 70.1-94.1), respectively. One-year survival for patients receiving best supportive care was equal to 27.5% (95% CI 16.9-38.1) (Figure 6).

The multivariable Cox analysis showed that slight to moderately elevated LDH (250-500 U/L) and high LDH level (>500 U/L) were a statistically significant factor associated with poor survival ($p < 0.001$), HR of 1.8 (95% CI 1.07-3.01) and 9.0 (95% CI 5.63-14.35) respectively. Also, the presence of liver metastases was negatively associated with survival, HR 2.09 (95% CI 1.07-4.08, $p = 0.03$). A WHO performance score > 1 on its own seemed to be associated with poorer survival in a univariable Cox analysis. However, when included in the multivariable analysis this association was no longer statistically significant. "Age" as a continuous variable was included in the model, but was not statistically significant (HR 1.0 (95% CI 0.99-1.02), $p = 0.69$) (Figure 7).

Figure S1 shows Kaplan-Meier estimates for survival when patients are categorized according to non-elevated versus elevated serum LDH for all three treatment groups at baseline. Both in the group of patients not receiving tumor-directed treatment (BSC) and the systemically treated group, an LDH above 250 U/l was clearly associated with poorer survival ($p < 0.001$). However, in the local treatment group, this difference was not statistically significant ($p = 0.15$).

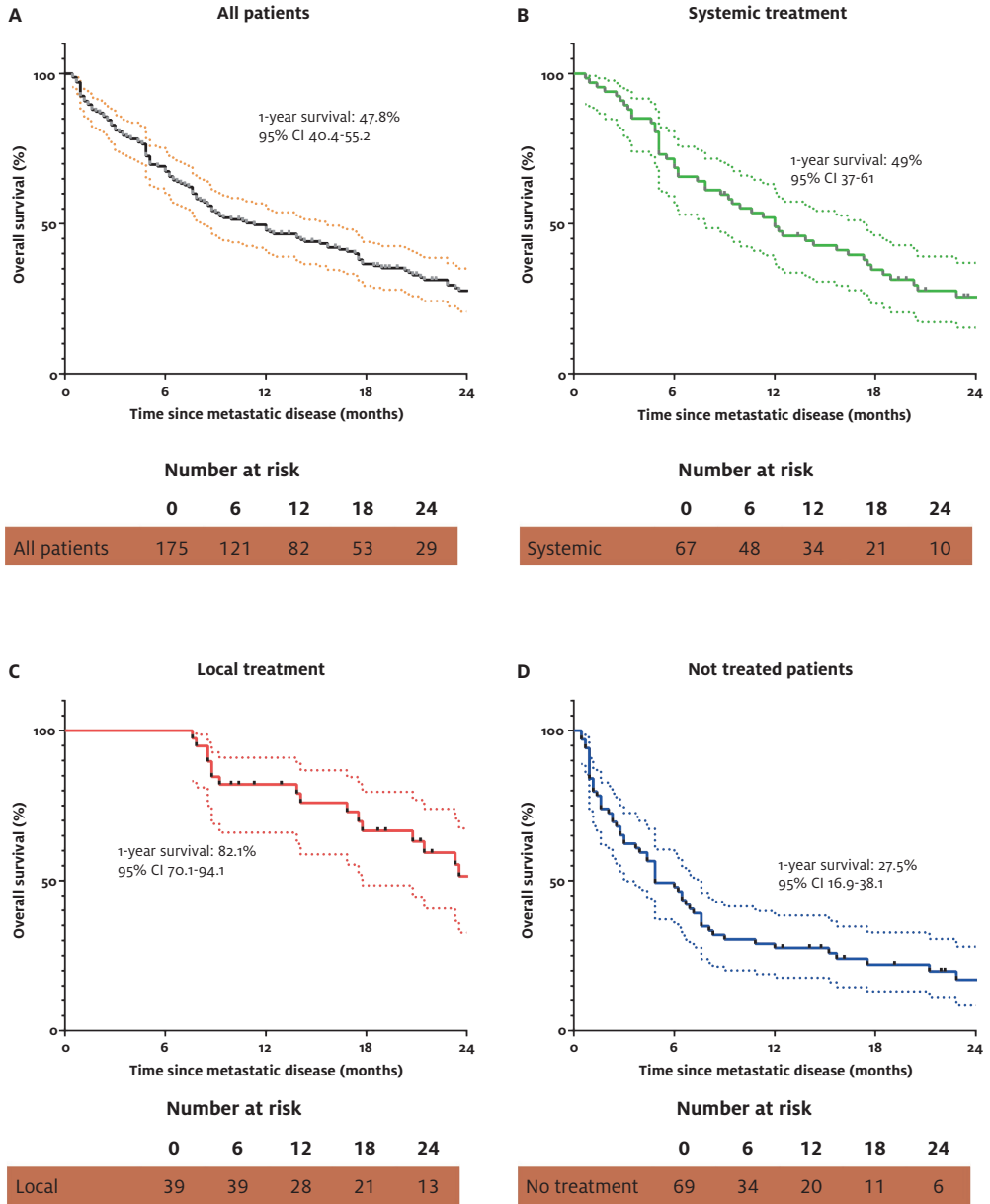


FIGURE 6 Kaplan-Meier Estimates for all 175 metastatic UM patients and per treatment strategy administered when diagnosed with metastatic disease. (A) Kaplan-Meier (KM) estimate for all metastatic UM patients, (B) KM estimate for patients treated with systemic therapy, (C) KM estimate for patients with local treatment, (D) KM estimate for patients receiving no tumor directed treatment (best supportive care).

Variable	Reference group	HR	95% CI
Age ≥65 years	Age <65 years	1.0	0.99-1.02
WHO 2, 3, 4	WHO 0 or 1	1.6	0.83-3.13
WHO unknown	WHO 0 or 1	1.2	0.74-1.92
LDH 250-500 U/l	Normal LDH	1.8	1.07-3.01
LDH >500 U/l	Normal LDH	9.0	5.63-14.35
LDH not determined	Normal LDH	1.65	0.69-3.90
Liver metastases	No liver metastases	2.09	1.07-4.08

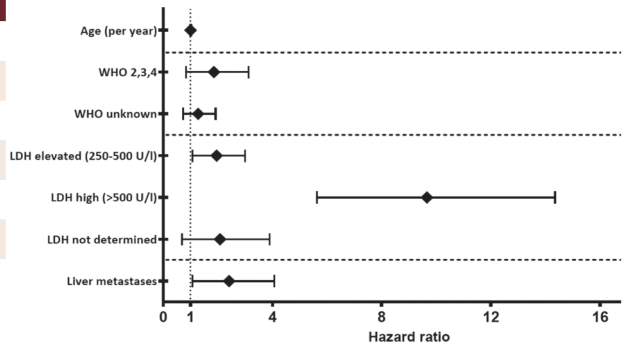


FIGURE 7 Multivariable hazard ratios (HR) associated with poorer survival in the full cohort along with the 95% confidence interval (CI).

Discussion

Metastatic uveal melanoma has a poor prognosis, usually leading to rapid clinical decline and early death. According to the literature, the majority of patients survive for less than 12 months^(7,8). In our cohort, we analyzed 175 patients with metastatic uveal melanoma according to first-line treatment strategies administered when they were diagnosed with stage IV disease between July 2012 and March 2018. The real-world results of this observational cohort are a reflection of uveal melanoma care available in the Netherlands and this article does not compare different treatment strategies and/or the impact on patient outcome. In our cohort, one-year survival for all patients with metastatic uveal melanoma is equal to 47.8% (95% CI 40.4-55.2), similar to that reported in known publications^(7,8). Studies reporting on survival in metastatic uveal melanoma have found the best results in terms of survival among patients in whom surgery or ablative procedures can be performed and among patients with solitary hepatic metastases⁽¹⁰⁻¹⁵⁾. Overall, these findings are suggestive of survival benefit, although it is likely that there is a selection bias towards the most clinically fit patients⁽⁹⁾. Based on the results in literature, the first choice of treatment in the Netherlands is, whenever possible, surgery, ablative procedures or isolated hepatic perfusion with melphalan (in a clinical trial setting). In line with the literature, our cohort shows a selection of relatively younger patients, with good WHO performance score, fewer metastatic sites and less elevated LDH who were treated with local treatment options. As no systemic therapy has been shown to improve overall survival for patients with metastatic uveal melanoma, there is no specific standard of care and patients should be directed to clinical trials. In the Netherlands, metastatic melanoma care has been centralized to 14 expert centers⁽³⁶⁾ improving management of metastatic melanoma patients, but also facilitating enrollment in clinical trials to get evidence-based treatment protocols. In our cohort in total 85 systemic therapies were

given in the context of a clinical trial, to 63 unique patients. The lack of availability of clinical trials was sometimes a reason to provide systemic therapy outside a clinical trial setting. These systemic therapies were registered for treatment of metastatic cutaneous melanoma and given to patients with metastatic uveal melanoma. In the present situation, decision making on available treatment options in metastatic UM patients occurs mainly on clinical characteristics leading to selection of patients for treatment in- and outside a clinical trial. The limited efficacy of checkpoint inhibitors in uveal melanoma has led to the agreement among members of the Dutch Working Group on immunotherapy and oncology (WIN-O) not to treat patients with immune checkpoint inhibitors outside a clinical trial. Combination studies on ipilimumab/nivolumab and novel immune-based approaches might be more promising⁽³⁷⁾.

In our cohort of UM patients, classic risk factors associated with survival, as elevated LDH and the presence of liver metastases^(7,8) are confirmed to be negatively associated with survival (Figure 7). The distribution of metastases (Figure 2) in our cohort is consistent with data from the large Collaborative Ocular Melanoma Study trials⁽³⁸⁾.

Our observational cohort may suffer from limitations in terms of the registration of real-world data, sometimes leading to missing variables which might affect results, especially in smaller treatment groups. For instance, in the group of patients receiving local treatment (39 patients) information on WHO performance score was missing in 14 patients (35.9%). Another registration flaw was detected in the documentation of the molecular analysis, reporting a GNAQ and GNA11 mutation in 6.4% of the analyzed patients. These mutations are mutually exclusive. Other limitations relate to the choice of data to collect in a registry. From a scientific perspective, a broad set of clinical and pathological characteristics (including molecular and genomic alterations), treatment strategies, adverse events and survival is desirable. This is, however, not always feasible, and ongoing developments are more difficult to incorporate. At this time, the DMTR contains limited data on molecular and genomic tumor alterations.

Important strengths of our observational cohort are the complete overview of patient and metastatic tumor characteristics and treatment options available in the Netherlands between 2012 and 2018 for metastatic uveal melanoma patients. Differences in metastatic UM patients are most probably caused by differences in baseline characteristics and patient selection for specific treatment. However, this overview might be used by other authors for comparing survival between treatment groups and the impact of their treatment strategy applied.

Conclusions

We present baseline characteristics, mutation analysis and treatment strategies with the corresponding one-year survival of a nation-wide (full coverage) cohort of 175 patients with metastatic uveal melanoma in the Netherlands. Selection of patients for treatment was mainly based on clinical characteristics, showing elevated LDH (HR 9.0, 95% CI 5.63-14.35), and the presence of liver metastases (HR 2.09, 95% CI 1.07-4.08) was negatively associated with survival in metastatic UM. The analysis of our observational cohort reflects the treatment choices made by physicians in Dutch melanoma expert centers. Our overview might be used by other authors for comparing survival between treatment groups and the impact of treatment strategy applied.

Supplementary Materials

The following are available online at <http://www.mdpi.com/2072-6694/11/7/1007/s1>, Figure S1: Kaplan-Meier Estimates per treatment strategy and level of LDH (normal LDH < 250 U/L vs. elevated LDH > 250 U/L).

Author Contributions

Conceptualization, A.J., M.K.v.d.K., M.F., M.G.S., M.J.A., A.C.v.A., F.W.P.J.v.d.B., A.J.M.v.d.E., M.G.F., J.W.B.d.G., J.B.A.G.H., G.A.P.H., R.H.K., W.H.J.K., M.L., D.P., R.S.v.R., K.P.M.S., A.J.t.T., G.V., M.W.J.M.W., M.C.T.v.Z., K.J.M.v.d.H. and E.K.; Formal analysis, A.J., M.K.v.d.K., M.F., M.W.J.M.W., K.J.M.v.d.H. and E.K.; Methodology, A.J., M.K.v.d.K., M.F., M.W.J.M.W., K.J.M.v.d.H. and E.K.; Visualization, A.J. and M.K.v.d.K.; Writing—original draft, A.J. and M.K.v.d.K.; Writing—review & editing, M.F., M.G.S., M.J.A., A.C.v.A., F.W.P.J.v.d.B., C.U.B., A.J.M.v.d.E., M.G.F., J.W.B.d.G., J.B.A.G.H., G.A.P.H., R.H.K., W.H.J.S.v.R., K.P.M.S., A.J.t.T., G.V., M.W.J.M.W., M.C.T.v.Z., K.J.M.v.d.H. and E.K.

Funding

This specific research manuscript received no external funding. The Netherlands Organization for Health Research and Development funded the start-up of the Dutch Melanoma Treatment Registry (DMTR). Grant number: 836002002. This grant was awarded under the effectiveness research for high-cost medicine program. From its foundation, the DMTR was sponsored by BMS, GSK (later acquired by Novartis), Roche Nederland B.V. and MSD (from 2015) via the Dutch Institute for Clinical Auditing (DICA).

Acknowledgments

The Dutch Melanoma Treatment Registry (DMTR) is facilitated by the Dutch Institute for Clinical Auditing (DICA). Data entry was conducted by data employees trained and monitored by The Netherlands Comprehensive Cancer Organization (IKNL). All collected data were checked and verified by medical oncologists.

Conflicts of Interest

In relation to their contribution to this specific manuscript the authors declare no conflict of interest. Some authors however have consulting/advisory relationships and have received funding for other research projects. A.J. has in the past received travel/accommodation expenses from Roche BV Netherlands.

A.C.v.A. has consulting/advisory relationships with Amgen, BMS, Novartis, MSD and Merck-Pfizer. He has received research funding from Amgen and Novartis and travel, accommodations, and expenses from Amgen and Novartis. C.U.B. has consulting/advisory relationships with BMS, MSD, Roche, Novartis, GSK, Lilly and Pfizer. He has received research funding from Novartis. A.J.M.v.d.E. has consulting/advisory relationships with BMS, Roche, MSD and Novartis. He has received a study grant from R. MargreetG. Franken has received grants from Roche BV Netherlands, Daiichi Sanky, AbbVie, Pamgene and Gilead Sciences. Jan Willem B. de Groot has advisory relationships with BMS, MSD and Roche. J.B.A.G. Haanen has provided consultation, attended advisory boards, and/or provided lectures for MSD, BMS, Roche and Novartis for which NKI received honoraria. His institution has received grant support from BMS and Novartis. G.A.P.H. has consulting/advisory relationships with Roche, MSD, BMS and Novartis. Her institution has received research funding from BMS. Rutger H. Koornstra has received speaker fees from BMS, MSD and Roche. He has advisory relationships with BMS, MSD, Novartis and Roche and has received research grants from BMS and Roche. K.P.M.S. has consulting/advisory relationships with BMS and MSD and has received honoraria from Novartis, Roche and Pierre Fabre (paid to institution). E.K. has consulting/advisory relationships with BMS, Novartis, Roche, Amgen, Pierre Fabre (honoraria paid to institution) and has received research grants from BMS, Novartis.

References

- 1 Bedikian, A.Y. Metastatic uveal melanoma therapy: Current options. *Int. Ophthalmol. Clin.* 2006, 46, 151-166.
- 2 Damato, B. Treatment of primary intraocular melanoma. *Expert Rev. Anticancer Ther.* 2006, 6, 493-506.
- 3 Dutch Cancer Registry. Available online: <https://www.cijfersoverkanker.nl/> (accessed on 12 December 2018).
- 4 Mallone, S.; De Vries, E.; Guzzo, M.; Midena, E.; Verne, J.; Coebergh, J.W.; Marcos-Gragera, R.; Ardanaz, E.; Martinez, R.; Chirlaque, M.D.; et al. Descriptive epidemiology of malignant mucosal and uveal melanomas and adnexal skin carcinomas in Europe. *Eur. J. Cancer* 2012, 48, 1167-1175.
- 5 Spagnolo, F.; Caltabiano, G.; Queirolo, P. Uveal melanoma. *Cancer Treat. Rev.* 2012, 38, 549-553.
- 6 Collaborative Ocular Melanoma Study Group. The COMS randomized trial of iodine 125 brachytherapy for choroidal melanoma: V. Twelve-year mortality rates and prognostic factors: COMS report No. 28. *Arch. Ophthalmol.* 2006, 124, 1684-1693.
- 7 Kujala, E.; Makitie, T.; Kivela, T. Very long-term prognosis of patients with malignant uveal melanoma. *Investig. Ophthalmol. Vis. Sci.* 2003, 44, 4651-4659.
- 8 Rietschel, P.; Panageas, K.S.; Hanlon, C.; Patel, A.; Abramson, D.H.; Chapman, P.B. Variates of survival in metastatic uveal melanoma. *J. Clin. Oncol.* 2005, 23, 8076-8080.
- 9 Augsburger, J.J.; Correa, Z.M.; Shaikh, A.H. Effectiveness of treatments for metastatic uveal melanoma. *Am. J. Ophthalmol.* 2009, 148, 119-127.
- 10 Hughes, M.S.; Zager, J.; Faries, M.; Alexander, H.R.; Royal, R.E.; Wood, B.; Choi, J.; McCluskey, K.; Whitman, E.; Agarwala, S.; et al. Results of a Randomized Controlled Multicenter Phase III Trial of Percutaneous Hepatic Perfusion Compared with Best Available Care for Patients with Melanoma Liver Metastases. *Ann. Surg. Oncol.* 2016, 23, 1309-1319.
- 11 Stinauer, M.A.; Kavanagh, B.D.; Schefter, T.E.; Gonzalez, R.; Flaig, T.; Lewis, K.; Robinson, W.; Chidel, M.; Glode, M.; Raben, D. Stereotactic body radiation therapy for melanoma and renal cell carcinoma: Impact of single fraction equivalent dose on local control. *Radiat. Oncol.* 2011, 6, 34.
- 12 Shashank, A.; Shehata, M.; Morris, D.L.; Thompson, J.F. Radiofrequency ablation in metastatic melanoma. *J. Surg. Oncol.* 2014, 109, 366-369.
- 13 Huppert, P.E.; Fierlbeck, G.; Pereira, P.; Schanz, S.; Duda, S.H.; Wietholtz, H.; Rozeik, C.; Claussen, C.D. Transarterial chemoembolization of liver metastases in patients with uveal melanoma. *Eur. J. Radiol.* 2010, 74, e38-e44.
- 14 Pawlik, T.M.; Zorzi, D.; Abdalla, E.K.; Clary, B.M.; Gershenwald, J.E.; Ross, M.I.; Aloia, T.A.; Curley, S.A.; Camacho, L.H.; Capussotti, L.; et al. Hepatic resection for metastatic melanoma: Distinct patterns of recurrence and prognosis for ocular versus cutaneous disease. *Ann. Surg. Oncol.* 2006, 13, 712-720.

- 15 De Leede, E.M.; Burgmans, M.C.; Kapiteijn, E.; Luyten, G.P.; Jager, M.J.; Tijl, F.G.; Hartgrink, H.H.; Grunhagen, D.J.; Rothbarth, J.; van de Velde, C.J.; et al. Isolated (hypoxic) hepatic perfusion with high-dose chemotherapy in patients with unresectable liver metastases of uveal melanoma: Results from two experienced centres. *Melanoma Res.* 2016, 26, 588-594.
- 16 Nathan, P.; Cohen, V.; Coupland, S.; Curtis, K.; Damato, B.; Evans, J.; Fenwick, S.; Kirkpatrick, L.; Li, O.; Marshall, E.; et al. Uveal Melanoma UK National Guidelines. *Eur. J. Cancer* 2015, 51, 2404-2412.
- 17 Melanoom, T. Available online: www.oncoline.nl/uveamelanoom (accessed on 12 December 2018).
- 18 Shoushtari, A.N.; Carvajal, R.D. GNAQ and GNA11 mutations in uveal melanoma. *Melanoma Res.* 2014, 24, 525-534.
- 19 Harbour, J.W.; Onken, M.D.; Roberson, E.D.; Duan, S.; Cao, L.; Worley, L.A.; Council, M.L.; Matatall, K.A.; Helms, C.; Bowcock, A.M. Frequent mutation of BAP1 in metastasizing uveal melanomas. *Science* 2010, 330, 1410-1413.
- 20 Martin, M.; Masshofer, L.; Temming, P.; Rahmann, S.; Metz, C.; Bornfeld, N.; van de Nes, J.; Klein-Hitpass, L.; Hinnebusch, A.G.; Horsthemke, B.; et al. Exome sequencing identifies recurrent somatic mutations in EIF1AX and SF3B1 in uveal melanoma with disomy 3. *Nat. Genet.* 2013, 45, 933-936.
- 21 Yavuziyigitoglu, S.; Koopmans, A.E.; Verdijk, R.M.; Vaarwater, J.; Eussen, B.; van Bodegom, A.; Paridaens, D.; Kilic, E.; de Klein, A.; Rotterdam Ocular Melanoma Study Group. Uveal Melanomas with SF3B1 Mutations: A Distinct Subclass Associated with Late-Onset Metastases. *Ophthalmology* 2016, 123, 1118-1128.
- 22 Flaherty, L.E.; Unger, J.M.; Liu, P.Y.; Mertens, W.C.; Sondak, V.K. Metastatic melanoma from intraocular primary tumors: The Southwest Oncology Group experience in phase II advanced melanoma clinical trials. *Am. J. Clin. Oncol.* 1998, 21, 568-572.
- 23 Nathan, F.E.; Berd, D.; Sato, T.; Shield, J.A.; Shields, C.L.; De Potter, P.; Mastrangelo, M.J. BOLD+ interferon in the treatment of metastatic uveal melanoma: First report of active systemic therapy. *J. Exp. Clin. Cancer Res. CR* 1997, 16, 201-208.
- 24 Kivela, T.; Suci, S.; Hansson, J.; Kruit, W.H.; Vuoristo, M.S.; Kloke, O.; Gore, M.; Hahka-Kemppinen, M.; Parvinen, L.M.; Kumpulainen, E.; et al. Bleomycin, vincristine, lomustine and dacarbazine (BOLD) in combination with recombinant interferon alpha-2b for metastatic uveal melanoma. *Eur. J. Cancer* 2003, 39, 1115-1120.
- 25 Kelderman, S.; van der Kooij, M.K.; van den Eertwegh, A.J.; Soetekouw, P.M.; Jansen, R.L.; van den Brom, R.R.; Hospers, G.A.; Haanen, J.B.; Kapiteijn, E.; Blank, C.U. Ipilimumab in pretreated metastatic uveal melanoma patients. Results of the Dutch Working group on Immunotherapy of Oncology (WIN-O). *Acta Oncol.* 2013, 52, 1786-1788.
- 26 Zimmer, L.; Vaubel, J.; Mohr, P.; Hauschild, A.; Utikal, J.; Simon, J.; Garbe, C.; Herbst, R.; Enk, A.; Kampgen, E.; et al. Phase II DeCOG-study of ipilimumab in pretreated and treatment-naive patients with metastatic uveal melanoma. *PLoS ONE* 2015, 10, e0118564.

- 27 Maio, M.; Danielli, R.; Chiarion-Sileni, V.; Pigozzo, J.; Parmiani, G.; Ridolfi, R.; De Rosa, F.; Del Vecchio, M.; Di Guardo, L.; Queirolo, P.; et al. Efficacy and safety of ipilimumab in patients with pre-treated, uveal melanoma. *Ann. Oncol.* 2013, 24, 2911-2915.
- 28 Kottschade, L.A.; McWilliams, R.R.; Markovic, S.N.; Block, M.S.; Villasboas Bisneto, J.; Pham, A.Q.; Esplin, B.L.; Dronca, R.S. The use of pembrolizumab for the treatment of metastatic uveal melanoma. *Melanoma Res.* 2016, 26, 300-303.
- 29 Bender, C.; Enk, A.; Gutzmer, R.; Hassel, J.C. Anti-PD-1 antibodies in metastatic uveal melanoma: A treatment option? *Cancer Med.* 2017, 6, 1581-1586.
- 30 Algazi, A.P.; Tsai, K.K.; Shoushtari, A.N.; Munhoz, R.R.; Eroglu, Z.; Piulats, J.M.; Ott, P.A.; Johnson, D.B.; Hwang, J.; Daud, A.I.; et al. Clinical outcomes in metastatic uveal melanoma treated with PD-1 and PD-L1 antibodies. *Cancer* 2016, 122, 3344-3353.
- 31 Heppt, M.V.; Heinzerling, L.; Kahler, K.C.; Forschner, A.; Kirchberger, M.C.; Loquai, C.; Meissner, M.; Meier, F.; Terheyden, P.; Schell, B.; et al. Prognostic factors and outcomes in metastatic uveal melanoma treated with programmed cell death-1 or combined PD-1/cytotoxic T-lymphocyte antigen-4 inhibition. *Eur. J. Cancer* 2017, 82, 56-65.
- 32 van der Kooij, M.K.; Joosse, A.; Speetjens, F.M.; Hospers, G.A.; Bisschop, C.; de Groot, J.W.; Koornstra, R.; Blank, C.U.; Kapiteijn, E. Anti-PD-1 treatment in metastatic uveal melanoma in the Netherlands. *Acta Oncol.* 2017, 56, 101-103.
- 33 Carvajal, R.D.; Sosman, J.A.; Quevedo, J.F.; Milhem, M.M.; Joshua, A.M.; Kudchadkar, R.R.; Linette, G.P.; Gajewski, T.F.; Lutzky, J.; Lawson, D.H.; et al. Effect of selumetinib vs chemotherapy on progression-free survival in uveal melanoma: A randomized clinical trial. *JAMA* 2014, 311, 2397-2405.
- 34 Carvajal, R.D.; Piperno-Neumann, S.; Kapiteijn, E.; Chapman, P.B.; Frank, S.; Joshua, A.M.; Piulats, J.M.; Wolter, P.; Cocquyt, V.; Chmielowski, B.; et al. Selumetinib in Combination With Dacarbazine in Patients With Metastatic Uveal Melanoma: A Phase III, Multicenter, Randomized Trial (SUMIT). *J. Clin. Oncol.* 2018, 36, 1232-1239.
- 35 Van Raamsdonk, C.D.; Griewank, K.G.; Crosby, M.B.; Garrido, M.C.; Vemula, S.; Wiesner, T.; Obenaus, A.C.; Wackernagel, W.; Green, G.; Bouvier, N.; et al. Mutations in GNA11 in uveal melanoma. *N. Engl. J. Med.* 2010, 363, 2191-2199.
- 36 Jochems, A.; Schouwenburg, M.G.; Leeneman, B.; Franken, M.G.; van den Eertwegh, A.J.; Haanen, J.B.; Gelderblom, H.; Uyl-de Groot, C.A.; Aarts, M.J.; van den Berkmortel, F.W.; et al. Dutch Melanoma Treatment Registry: Quality assurance in the care of patients with metastatic melanoma in the Netherlands. *Eur. J. Cancer* 2017, 72, 156-165.
- 37 Pelster, M.; Gruschkus, S.K.; Basset, R.; Gombus, D.S.; Shephard, M.; Posada, L.; Glover, M.; Diab, A.; Hwu, P.; Patel, S.P. Phase II study of ipilimumab and nivolumab (ipi/nivo) in metastatic uveal melanoma (UM). *J. Clin. Oncol.* 2019, 37, 9522.
- 38 Diener-West, M.; Reynolds, S.M.; Agugliaro, D.J.; Caldwell, R.; Cumming, K.; Earle, J.D.; Hawkins, B.S.; Hayman, J.A.; Jaiyesimi, I.; Jampol, L.M.; et al. Development of metastatic disease after enrollment in the COMS trials for treatment of choroidal melanoma: Collaborative Ocular Melanoma Study Group Report No. 26. *Arch. Ophthalmol.* 2005, 123, 1639-1643.

- 39 Schemper, M.; Smith, T.L. A note on quantifying follow-up in studies of failure time. *Control. Clin. Trials* 1996, 17, 343-346.