



Universiteit  
Leiden  
The Netherlands

## **Percutaneous hepatic perfusion in unresectable liver metastases: focus on ocular melanoma**

Meijer, T.S.

### **Citation**

Meijer, T. S. (2023, March 29). *Percutaneous hepatic perfusion in unresectable liver metastases: focus on ocular melanoma*. Retrieved from <https://hdl.handle.net/1887/3589769>

Version: Publisher's Version

License: [Licence agreement concerning inclusion of doctoral thesis in the Institutional Repository of the University of Leiden](#)

Downloaded from: <https://hdl.handle.net/1887/3589769>

**Note:** To cite this publication please use the final published version (if applicable).



# CHAPTER 7

## **Prospective evaluation of percutaneous hepatic perfusion with melphalan as a treatment for unresectable liver metastases from colorectal cancer**

T.S. Meijer  
J.H.N. Dieters  
E.M. de Leede  
L.F. de Geus-Oei  
J. Vuijk  
C.H. Martini  
A.R. van Erkel  
J. Lutjeboer  
R.W. van der Meer  
F.G.J. Tijl  
E. Kapiteijn  
A.L. Vahrmeijer  
M.C. Burgmans

# ABSTRACT

## **Purpose**

Percutaneous hepatic perfusion with melphalan (M-PHP) is increasingly used in patients with liver metastases from various primary tumors, yet data on colorectal liver metastases (CRLM) are limited. The aim of this study was to prospectively evaluate the efficacy and safety of M-PHP in patients with CRLM.

## **Materials and Methods**

Prospective, single-center, single-arm phase II study of M-PHP with hemofiltration in patients with unresectable CRLM. Proven, extrahepatic metastatic disease was one of the exclusion criteria. Primary outcomes were overall response rate (ORR) and best overall response (BOR). Secondary outcomes were overall survival (OS), progression-free survival (PFS), hepatic PFS (hPFS), and safety.

## **Results**

A total of 14 M-PHP procedures were performed in eight patients between March 2014 and December 2015. All patients (median age 56 years, ranging from 46 to 68) had received (extensive) systemic chemotherapy before entering the study. The ORR was 25%, with two out of eight patients showing partial response as BOR. Median OS was 17.3 months (ranging from 2.6 to 30.9) with a one-year OS of 50%. Median PFS and hPFS were 4.4 and 4.5 months, respectively. No serious adverse events occurred. Grade 3/4 hematologic adverse events were observed in the majority of patients, though all were transient and well-manageable.

## **Conclusion**

M-PHP is a safe procedure with only limited efficacy in patients with unresectable CRLM who already showed progression of disease after receiving one or more systemic treatment regimens.

# INTRODUCTION

Colorectal cancer (CRC) is the third most common cancer type worldwide. In 2018, approximately 1.8 million new cases of CRC were diagnosed, which accounted for 9.2% (880,000) of all cancer-related deaths.<sup>1</sup> The most common site of distant metastases in CRC is the liver as the majority of venous blood from the colon drains into the hepatic portal vein via the superior and inferior mesenteric veins. Around 15-25% of patients will present with synchronous colorectal liver metastases (CRLM), and ultimately approximately 50% of patients with CRC will develop liver metastases at some point in the course of their disease.<sup>2,3</sup>

Surgical resection is considered standard of care for patients with resectable CRLM with a median overall survival (OS) ranging from 36-56 months.<sup>4-6</sup> Despite the improvement of surgical techniques, expansion of the indications for surgery, and advances in neoadjuvant therapies, only about 25% of patients is eligible for surgery at the time of diagnosis.<sup>7</sup> In patients with unresectable CRLM, systemic therapy is considered to be the first treatment modality with a reported median OS of approximately 2.5 years.<sup>8</sup> Liver-directed therapies such as radioembolization, chemoembolization, hepatic arterial infusion pump chemotherapy, or isolated hepatic perfusion (IHP) may offer an alternative treatment with limited systemic side-effects, but are generally not considered as first-line therapy in patients with CRLM.

Percutaneous hepatic perfusion with melphalan (M-PHP) is a novel therapy that was developed as minimally invasive alternative to IHP. IHP is an invasive, complex surgical procedure in which the liver is isolated from the systemic circulation followed by infusion of a high dose of chemotherapy into the common hepatic artery and/or portal vein.<sup>9-13</sup> In patients with CRLM, hepatic response rates of 50-59% and a median OS of 24.8-28.8 months have been reported after IHP with a high-dose of melphalan.<sup>14,15</sup> A major drawback of IHP is that it is not repeatable and associated with considerable morbidity and mortality rates up to 7% as a result of the invasive surgical procedure.<sup>14,15</sup>

M-PHP is a repeatable, well-tolerated procedure with an acceptable safety profile<sup>16-18</sup> that is able to prolong progression-free survival in patients with liver metastases from ocular melanoma.<sup>17,19-22</sup> Up to now, data on M-PHP in CRLM remain limited. Only a small number of patients with CRLM have been studied while they were part of a heterogeneous cohort of patients with liver metastases from different primary tumors.<sup>23-25</sup> Moreover, these studies did not report tumor response and survival in CRLM patients. The aim of this study was to prospectively evaluate the efficacy and safety of M-PHP in patients with unresectable CRLM.

# MATERIALS AND METHODS

## Patients selection and study design

The current study was designed as a prospective, single-arm, single-center phase II study and registered in advance at [www.trialregister.nl](http://www.trialregister.nl) (NTR4050). Ethical approval was obtained from the local ethics committee (Leiden University Medical Center) and the study was conducted in accordance with the Declaration of Helsinki, 2013 version. Written informed consent was obtained from all patients before inclusion.

Patients with histologically proven and unresectable CRLM were eligible for the study. Exclusion criteria are listed in Table 1. Prior to inclusion, all patients were discussed at a multidisciplinary team (MDT) meeting. To achieve an acceptable inclusion rate few restrictive exclusion criteria were incorporated in the study protocol. Patients with unresectable CRLM were eligible for inclusion regardless of any prior systemic treatment. This allowed inclusion of patients who were intolerant to systemic chemotherapy or chemo-naïve and unwilling to undergo systemic therapy. However, our MDT always gave preference to first-line systemic chemotherapy over study inclusion in chemo-naïve patients.

Treatment consisted of two M-PHP procedures at a 5-8 weeks interval. Patients with progressive disease (PD) or unacceptable adverse events (AEs) after the first M-PHP procedure, did not receive a second procedure. The melphalan dose was reduced with 20-25% if patients developed grade 3/4 hematologic toxicity after the first procedure. All patients received a subcutaneous injection of granulocyte-colony stimulating factor (pegfilgrastim 6 mg) within 72h after each M-PHP. M-PHP was scheduled at least one month after resection of the primary tumor to prevent gastro-intestinal bleeding complications as a result of per-procedural heparinization.

**TABLE 1. Exclusion criteria**

Laboratory test results	Other
APTT >1.5 × ULN	Age <18 or >75 years
PT >1.5 × ULN	Extrahepatic metastatic disease (on CECT or FDG-PET/CT)
Leukocytes <3.0 × 10 <sup>9</sup> /L	WHO performance status ≥2
Thrombocytes <100 × 10 <sup>9</sup> /L	Severe comorbidity <sup>a</sup>
Creatinine clearance <40 ml/min	<40% healthy liver tissue
AST >2.5 × ULN	Vascular anatomy impeding M-PHP
ALT >2.5 × ULN	Prior Whipple's surgery
Serum bilirubin >1.5 × ULN	Intracranial lesions with propensity to bleed (on CT/MRI)
ALP >2.5 × ULN	Pregnancy

<sup>a</sup>e.g. cardiovascular or pulmonary disease precluding general anaesthesia, diabetes with nephropathy, active infections, other liver disease.

ALP alkaline phosphatase, ALT alanine aminotransferase, APTT activated partial thromboplastin time, AST aspartate aminotransferase, CECT contrast-enhanced computed tomography of chest and abdomen, FDG-PET/CT positron emission tomography with integrated non-contrast enhanced computed tomography and 18F-2-fluoro-2-deoxy-D-glucose as radiotracer, M-PHP percutaneous hepatic perfusion with melphalan, PT prothrombin time, ULN upper limit of normal.

## Procedure details

The M-PHP procedure has been described in greater detail previously.<sup>26</sup> Essential steps are discussed below.

Hepatic angiography was performed approximately one week prior to the first M-PHP and hepatico-enteric anastomoses were embolized if deemed necessary to prevent inadvertent flow of melphalan to the gastrointestinal tract.

All M-PHP procedures were performed under general anesthesia with continuously monitoring of vital signs. Per-procedural heparin was administered to achieve an activated clotting time of  $\geq 450$  seconds. A 18-F sheath was placed percutaneously into the right common femoral vein (CFV) and through the sheath a 16-F double-balloon catheter (Isfuse Isolation Aspiration Catheter, Delcath Systems Inc, New York, NY, USA) was placed in the inferior vena cava (IVC) via the right CFV. The cranial balloon was inflated at the atriocaval junction and the caudal balloon at the infrahepatic portion of the IVC to prevent flow of melphalan into the systemic circulation. Melphalan 3 mg/kg (maximum dose 220 mg) was infused into the proper hepatic artery. Alternatively, the dose was split and infused into both the right and left hepatic artery. The chemosaturated blood was then aspirated through catheter fenestrations in a segment between the two balloons, pumped through an extracorporeal hemofiltration system (GEN 2 CHEMOSAT® filtration system, Delcath Systems Inc, New York, NY, USA) and returned to the patient via a 10-F sheath in the right internal jugular vein. Extracorporeal filtration was continued for 30 minutes after completion of melphalan infusion. Protamine sulphate 3 mg/kg was administered at the end of the procedure. The arterial sheath in the left common femoral artery was removed and hemostasis was achieved using a closure device.

## Follow-up

Contrast-enhanced computed tomography (CECT) of the chest and abdomen was performed at baseline, 4-8 weeks after each M-PHP, and then every 3 months in the first year and every 6 months thereafter until progression occurred.

Blood tests were performed daily during hospital admission and at several fixed time points after discharge. Adverse events were continuously monitored and reported according to the Common Terminology Criteria for Adverse Events version 4.03 (CTCAE v4.03).

## Endpoints

All images were reviewed by independent radiologists using the Response Evaluation Criteria in Solid Tumors (RECIST) 1.1 criteria.<sup>27</sup> Primary endpoint was the overall response rate (ORR). ORR was defined as the percentage of patients with complete response (CR) or partial response (PR). Best overall response (BOR) was used to determine ORR. BOR was defined as the best response at any time point after the first M-PHP and prior to the start of any other anti-cancer therapy. Secondary endpoints included best hepatic response, OS,

progression-free survival (PFS), hepatic PFS (hPFS), and safety.

### Statistical analyses

OS was defined as time of first M-PHP until death due to any cause or censoring. PFS was defined as time of first M-PHP until progressive disease (PD), death due to any cause or censoring. hPFS was defined as time of first M-PHP until progression of liver disease, death due to any cause, or censoring.

The sample size calculations were based on the primary outcome measure of response after two M-PHP procedures. In a previous clinical trial where patients were treated with one IHP procedure, an ORR was observed in over 50% of patients.<sup>14</sup> Treatment with two M-PHP perfusions was expected to increase this response percentage. We choose a sample size that allows the response percentage to be determined with sufficient accuracy, i.e. with a sufficiently narrow confidence interval. Assuming a true response percentage of 60%, a sample size of 34 patients will yield a two-sided confidence interval of length 0.33 ( $\pm 16.5\%$  around the observed proportion).

Median OS, median PFS, and hPFS were measured in days and subsequently converted into months. Graphs shown in this study were generated with dedicated software (SPSS 23.0, SPSS Inc., Chicago, IL, USA) using the Kaplan-Meier method.

## RESULTS

Our study was terminated prematurely due to slow recruitment. Several factors contributed to the slow recruitment, such as the availability of alternative therapies (e.g. systemic chemotherapy or radioembolization), competing trials with systemic drugs or intra-arterial therapies, and ineligibility of screened patients.

Between March 2014 and December 2015, a total of 16 patients with unresectable CRLM were assessed for eligibility (Figure 1). Of these, eight patients were excluded for the following reasons: extrahepatic disease ( $n = 4$ ) or because systemic chemotherapy was preferred during the MDT meeting as standard first-line therapy ( $n = 4$ ). Thus, eight patients with a median age of 56 years (ranging from 46 to 68) participated in this study. Baseline patient characteristics are summarized in Table 2. All patients received some form of systemic therapy before entering the study and half of the patients received prior surgical resection of CRLM. The median interval between diagnosis of CRLM and first M-PHP was 23.7 months (ranging from 8.3 to 35.1).

A total of 14 M-PHPs were performed in eight patients. Six patients received two M-PHP procedures as per protocol and the other two patients received only one M-PHP procedure due to PD after the first procedure. Median melphalan dose was 220 mg (ranging from 190 to 220) for the first cycle and 220 mg (ranging from 160 to 220) for the second cycle. In all procedures, hospital length-of-stay was two or three days.



**TABLE 2. Baseline characteristics**

Pt	Gender	Age	Type CRC	Liver metastases		Previous therapy <sup>a</sup>	
				Type	No.	Systemic	Local
1	M	57	Sigmoid	Synchr.	>10	Bevacizumab/CAPOX; irinotecan/bevacizumab; panitumumab; CAPOX	Segmentectomy S8
2	M	46	Sigmoid	Synchr.	2-5	CAPOX; panitumumab	Metastectomy S6 & S8, single RFA
3	M	64	Sigmoid	Synchr.	>10	Bevacizumab/CAPOX <sup>b</sup> ; CAPOX	Metastectomy S5 & S6, multiple RFAs
4	F	57	Rectum	Synchr.	>10	CAPOX <sup>c</sup> ; CRT with capecitabine; irinotecan; cetuximab	Metastectomy S5-7
5	M	55	Cecum	Synchr.	>10	CAPOX; capecitabine	-
6	M	51	Cecum	Synchr.	>10	Bevacizumab/CAPOX; FOLFOX	-
7	F	49	Rectum	Metachr.	>10	CRT with capecitabine; 5FU/irinotecan/bevacizumab; FOLFOX/panitumumab	-
8	F	68	Transverse colon	Synchr.	2-5	CAPOX	-

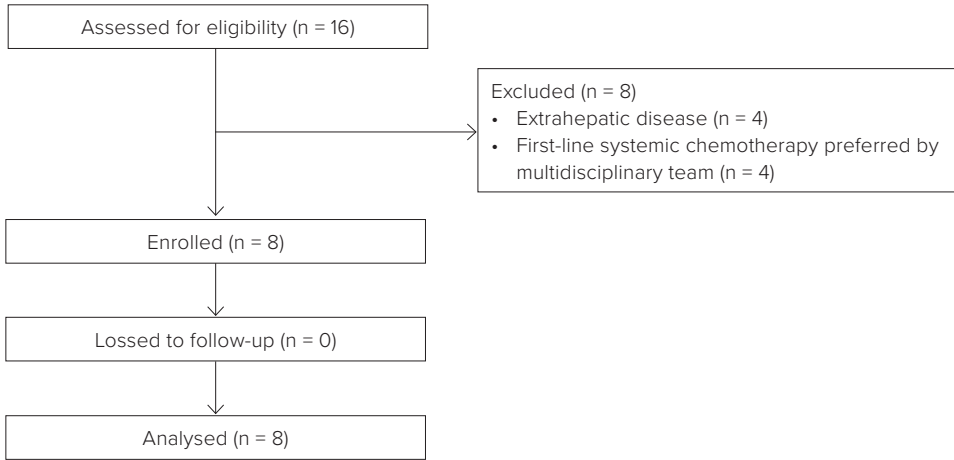
<sup>a</sup> Besides resection of the primary tumor.

<sup>b</sup> Neoadjuvant treatment.

<sup>c</sup> Induction therapy.

Pt patient, CRC colorectal cancer, CRT chemoradiation therapy, S liver segment, Synchr. Synchronous, Metachr. Metachronous, M-PHP percutaneous hepatic perfusion with melphalan, No. number, RFA radiofrequency ablation, CAPOX capecitabine + oxaliplatin, FOLFOX oxaliplatin + leucovorin + 5FU.





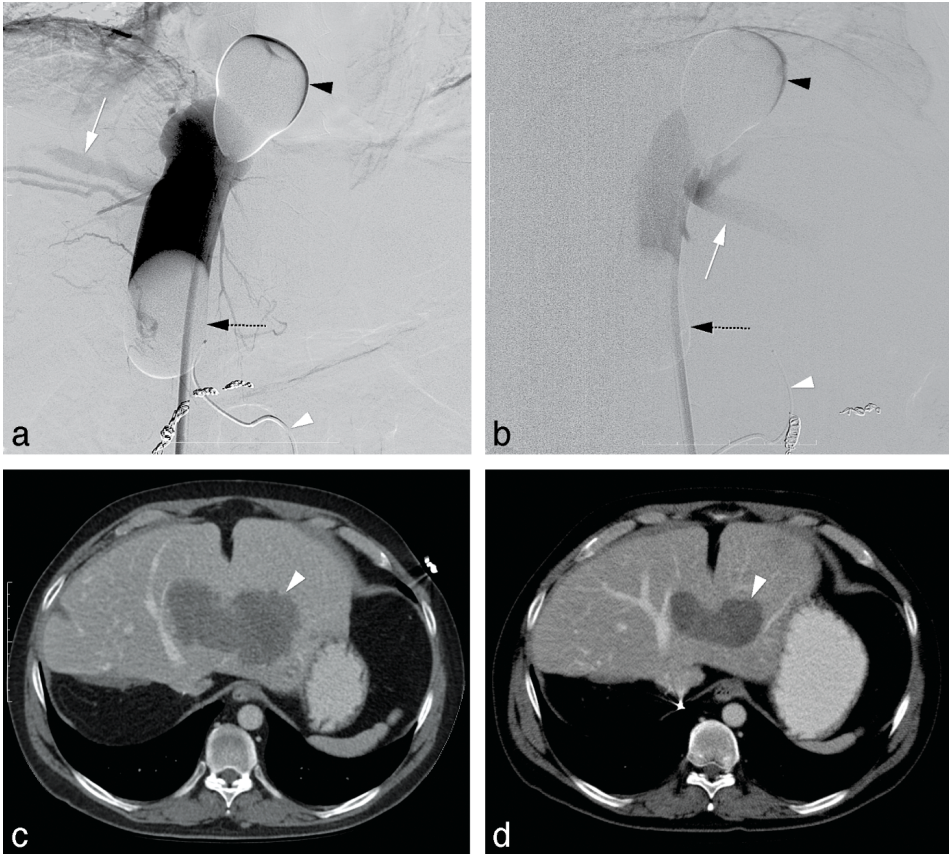
**FIGURE 1. Patient flow diagram**

There was no loss to follow-up. Tumor response and survival outcomes are reported in Table 3. ORR was 25% with two out of eight patients showing partial response (PR) (Figure 2). Three patients (38%) showed stable disease (SD) as BOR and the other three patients (38%) showed PD.

At the time of study termination, all patients had passed away. Median OS was 17.3 months (ranging from 2.6 to 30.9) (Figure 3). The one-, two-, and three-year OS was 50.0%, 50.0%, and 0% respectively. Median PFS was 4.4 months (ranging from 1.1 to 23.6) and median hPFS was 4.5 months (ranging from 1.1 to 23.6). Six out of eight patients received some form of subsequent treatment after progression of disease occurred (Table 3).

### Safety

No deaths or other serious AEs occurred. All AEs are listed in Table 4. Grade 3/4 thrombocytopenia, anemia, leukocytopenia, and lymphocytopenia was observed in 75.0% (6/8), 37.5% (3/8), 87.5% (7/8) and 100.0% (8/8) of patients, respectively. Grade 4 neutropenia was observed in 50.0% (4/8) of patients. Grade 3 elevation of AST was observed in 25.0% of patients (2/8). The most common non-hematologic and non-hepatic AE was grade 1/2 post-procedural fever without any infection focus; this was observed in 50.0% of patients (4/8).



**FIGURE 2. M-PHP in a 46-year-old male with a solitary liver metastasis from colorectal carcinoma in the left liver lobe after previous radiofrequency ablation in liver segment 2, metastasectomy of liver segment 4, and a right hepatectomy**

(a-b) Postero-anterior and lateral images during venography, performed by manual injection of non-diluted contrast medium through side holes of the double-balloon catheter. The cranial balloon (black arrowhead) was inflated at the atriocaval junction and the caudal balloon (dotted black arrow) in the infrahepatic portion of the inferior vena cava. Note the opacification of both the right hepatic vein (white arrow in a) and middle hepatic vein (white arrow in b), while there was no leakage alongside the balloons. A microcatheter (white arrowhead) was placed into the hepatic artery proper for the infusion of melphalan. Note also the coils after successful embolization of the right gastric artery and gastroduodenal artery. (c) Axial CT image before treatment showing a solitary hypovascular lesion (white arrowhead). (d) Axial CT image after two cycles of M-PHP showing reduction in size of the lesion (white arrowhead) corresponding with partial response.

**TABLE 3. Tumor response and survival**

Pt	Time between CRLM and 1 <sup>st</sup> M-PHP (mo)	No. procedures	Tumor response	PFS (mo)	hPFS (mo)	OS (mo)	Treatments after PD
1	35.1	1	PD <sup>a</sup>	1.1	3.2	7.2	Capecitabine
2	28.1	2	PR	5.7	7.1	28.7	FOLFIRI/bevacizumab; capecitabine
3	30.0	2	PR	5.9	5.9	25.2	Capecitabine/bevacizumab; panitumumab; irinotecan
4	19.3	1	PD <sup>b</sup>	1.1	1.1	2.6	-
5	8.3	2	PD <sup>c</sup>	3.1	3.1	9.5	RT <sup>e</sup> ; bevacizumab/irinotecan
6	8.7	2	SD	7.3	7.3	33.3	BMS-986156/nivolumab <sup>d</sup> ; TAS 102
7	9.5	2	SD	2.9	2.9	9.1	-
8	32.1	2	SD	23.6	23.6	30.9	Capecitabine

<sup>a</sup> Although liver disease was stable, there was a new lymph node metastasis.

<sup>b</sup> Progression of liver metastases and development of extrahepatic disease.

<sup>c</sup> After the 1<sup>st</sup> M-PHP, patient showed SD. After the 2<sup>nd</sup> M-PHP, patient showed PD.

<sup>d</sup> Phase I/II study of BMS-986156 (i.e. a glucocorticoid-induced tumor necrosis factor receptor-related protein) with our without nivolumab.

<sup>e</sup> RT for bone metastases.

*BOR* best overall response, *FOLFIRI* folinic acid (leucovorin) + fluorouracil (5FU) + irinotecan, *hPFS* hepatic progression-free survival, *M-PHP* percutaneous hepatic perfusion with melphalan, *OS* overall survival, *PD* progressive disease, *PFS* progression-free survival, *PR* partial response, *Pt* patient, *RT* radiation therapy, *SD* stable disease, *TAS 102* trifluridine/tipiracil.

**TABLE 4. Adverse events**

	Patient	1	2	3	4	5	6	7	8
<b>Hematologic events</b>									
Thrombocytopenia (gr)		4	3	1	3	2	3	4 <sup>a</sup>	4
Leukopenia (gr)		4	4	4	4	1	4	4	4
Anemia (gr)		3	2	2	2	2	2	3 <sup>b</sup>	3 <sup>b</sup>
Lymphopenia (gr)		3	3	3	4	3	4	3	3
Neutropenia (gr)		4	4	4	N/A	-	4	N/A	N/A
<b>Non-hematologic events</b>									
Elevated AST (gr)		2	2	1	3	3	1	2	-
Elevated ALT (gr)		1	1	-	N/A	N/A	2	-	-
Elevated bilirubin (gr)		2	-	-	N/A	N/A	2	-	-
Fever, treatment related (gr)		2	1	-	-	1	1	-	-
Nausea (gr)		-	1	2	-	1	1	2	-
Alopecia (gr)		1	-	-	-	-	-	-	1
Other		<sup>c</sup>	-	<sup>d</sup>	-	<sup>e</sup>	-	-	<sup>f</sup>

<sup>a</sup> Treated with platelet transfusion.

<sup>b</sup> Treated with red blood cell transfusion.

<sup>c</sup> Haemorrhage groin, treated with a tight pressure dressing.

<sup>d</sup> Peripheral edema due to periprocedural overhydration, treated with diuretics.

<sup>e</sup> Lower urinary tract infection, treated with oral antibiotics.

<sup>f</sup> Aneurysma spurium, successfully treated with a thrombin injection.

Note: all patients received a subcutaneous injection of granulocyte-colony stimulating factor within 72h after each M-PHP procedure.

AST aspartate transaminase, ALT alanine transaminase, *Bili* bilirubin, *Gr* grade, N/A not available.

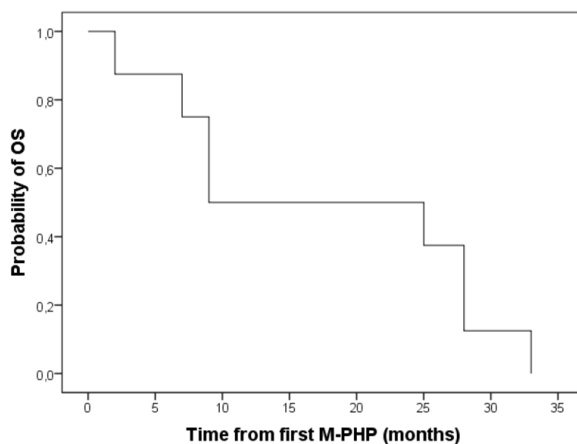


FIGURE 3. Kaplan-Meier estimate of OS for all included patients ( $n = 8$ )

## DISCUSSION

To date, published series including patients with CRLM that were treated with M-PHP have predominantly reported on hemodynamic and metabolic changes, pharmacokinetics and toxicity.<sup>23-25</sup> The current study was designed to prospectively investigate the efficacy and safety of M-PHP in patients with unresectable CRLM. The ORR of 25% and median OS of 17.3 months were lower than expected based on studies on IHP in patients with CRLM.<sup>14,15</sup>

Tumor response in our study was unfavorable compared to the prospective study by Rothbarth et al. (ORR 59%) in which 71 patients with CRLM were treated with IHP using a high dose of melphalan.<sup>15</sup> This appears to be largely attributable to a difference in baseline characteristics between both study populations. Whereas 37% of patients in the study by Rothbarth et al. had received a previous treatment for liver metastases (36% systemic therapy and 1% resection) prior to study inclusion, this was 100% in our study population (100% systemic therapy and 50% resection). This was also reflected in a substantial difference in median interval from diagnosis of CRLM to treatment; this was 4 months in the study by Rothbarth et al. versus 23.7 months in the current study. As all patients that were included in our study had already shown disease progression following systemic chemotherapy, it seems plausible that this limited the a priori probability of M-PHP being effective in these patients.

Fluoropyrimidines, i.e. 5-fluorouracil (5-FU) and capecitabine which is the orally administered pro-drug of 5-FU, are the backbone of systemic chemotherapy for metastatic colorectal cancer and are often combined with oxaliplatin (FOLFOX) or irinotecan (FOLFIRI). Although percutaneous hepatic perfusion (PHP) with 5-FU has been investigated, currently available hemofiltration systems are only intended for the use of melphalan. Given the

disease progression under systemic therapy with fluoropyrimidines in our study population, it seems questionable to treat patients suffering from CRLM with PHP using 5-FU.

We were able to confirm the findings of prior studies that M-PHP is well-tolerated and has an acceptable safety profile.<sup>15-18</sup> This was also the case for one patient with a dihydropyrimidine dehydrogenase (DPD)-deficiency in whom systemic chemotherapy was stopped early due to severe 5-FU-associated toxicity. In a pharmacological study we demonstrated that the mean extraction rate of the GEN 2 hemofiltration system, which is also used in the current study, is 86%.<sup>18</sup> As a result, only a small fraction of melphalan that is administered through the hepatic artery will eventually reach the systemic circulation where it can cause hematologic adverse events. Moreover, all study patients received a G-CSF injection following each M-PHP procedure to further limit systemic side-effects.

This study had some limitations. Most notably, the study was terminated early because of a slow recruitment and therefore the patient number was too low to draw definitive conclusions. Second, the study was a single center study. In relation to this problem, the importance of multi-center recruitment, as performed in other locoregional chemotherapy trials must be emphasized.<sup>20,28,29</sup> Third, there was no control arm.

## CONCLUSION

We were able to confirm earlier findings that M-PHP is a well-tolerated and safe procedure. The outcomes on tumor response and survival, however, did not meet our expectations and imply that there currently is no clear role for M-PHP in patients with CRLM outside of clinical trials.

## REFERENCES

1. Bray F, Ferlay J, Soerjomataram I, Siegel RL, Torre LA, Jemal A. Global cancer statistics 2018: GLOBOCAN estimates of incidence and mortality worldwide for 36 cancers in 185 countries. *CA Cancer J Clin.* 2018;68(6):394-424.
2. Leporrier J, Maurel J, Chiche L, Bara S, Segol P, Launoy G. A population-based study of the incidence, management and prognosis of hepatic metastases from colorectal cancer. *Br J Surg.* 2006;93(4):465-474.
3. Leonard GD, Brenner B, Kemeny NE. Neoadjuvant chemotherapy before liver resection for patients with unresectable liver metastases from colorectal carcinoma. *J Clin Oncol.* 2005;23(9):2038-2048.
4. House MG, Ito H, Gönen M, Fong Y, Allen PJ, DeMatteo RP, et al. Survival after hepatic resection for metastatic colorectal cancer: trends in outcomes for 1,600 patients during two decades at a single institution. *J Am Coll Surg.* 2010;210(5):744-752.
5. Choti MA, Sitzmann JV, Tiburi MF, Sumetchotimetha W, Rangsri R, Schulick RD, et al. Trends in long-term survival following liver resection for hepatic colorectal metastases. *Ann Surg.* 2002;235(6):759-766.
6. de Ridder JAM, van der Stok EP, Mekenkamp LJ, Wiering B, Koopman M, Punt CJA, et al. Management of liver metastases in colorectal cancer patients: A retrospective case-control study of systemic therapy versus liver resection. *Eur J Cancer.* 2016;59:13-21.
7. Hackl C, Neumann P, Gerken M, Loss M, Klinkhammer-Schalke M, Schlitt HJ. Treatment of colorectal liver metastases in Germany: a ten-year population-based analysis of 5772 cases of primary colorectal adenocarcinoma. *BMC Cancer.* 2014;4:14:810.
8. Benson AB 3rd, Venook AP, Cederquist L, Chan E, Chen Y, Cooper HS, et al. Colon Cancer, Version 1.2017, NCCN Clinical Practice Guidelines in Oncology. *J Natl Compr Canc Netw.* 2017;15(3):370-398.
9. Ausman RK. Development of a technic for isolated perfusion of the liver. *N Y State J Med.* 1961;61:3993-3997.
10. Aigner K, Walther H, Tonn J, Wenzl A, Hechtel R, Merker G, et al. First experimental and clinical results of isolated liver perfusion with cytotoxics in metastases from colorectal primary. *Recent Results Cancer Res.* 1983;86:99-102.
11. de Brauw LM, Marinelli A, van de Velde CJ, Hermans J, Tjaden UR, Erkelens C, et al. Pharmacological evaluation of experimental isolated liver perfusion and hepatic artery infusion with 5-fluorouracil. *Cancer Res.* 1991;51(6):1694-1700.
12. Hafstrom LR, Holmberg SB, Naredi PL, Lindner PG, Bengtsson A, Tidebrant G, et al. Isolated hyperthermic liver perfusion with chemotherapy for liver malignancy. *Surg Oncol.* 1994;3(2):103-108.
13. Marinelli A, Vahrmeijer AL, van de Velde CJ. Phase I/II studies of isolated hepatic perfusion with mitomycin C or melphalan in patients with colorectal cancer hepatic metastases. *Recent Results Cancer Res.* 1998;147:83-94.
14. van Iersel LB, Gelderblom H, Vahrmeijer AL, van Persijn van Meerten EL, Tijl FG, Putter H, et al. Isolated hepatic melphalan perfusion of colorectal liver metastases: outcome and prognostic factors in 154 patients. *Ann Oncol.* 2008;19(6):1127-1134.
15. Rothbarth J, Pijl ME, Vahrmeijer AL, Hartgrink HH, Tijl FG, Kuppen PJ, et al. Isolated hepatic perfusion

- with high-dose melphalan for the treatment of colorectal metastasis confined to the liver. *Br J Surg*. 2003;90(11):1391-1397.
16. Meijer TS, Burgmans MC, Fiocco M, de Geus-Oei LF, Kapiteijn E, de Leede EM, et al. Safety of percutaneous hepatic perfusion with melphalan in patients with unresectable liver metastases from ocular melanoma using the Delcath Systems' second-generation hemofiltration system: a prospective non-randomized phase II trial. *Cardiovasc Intervent Radiol*. 2019;42(6):841-852.
  17. Karydis I, Gangi A, Wheeler MJ, Choi J, Wilson I, Thomas K, et al. Percutaneous hepatic perfusion with melphalan in uveal melanoma: a safe and effective treatment modality in an orphan disease. *J Surg Oncol*. 2018;117(6):1170-1178.
  18. EM de Leede, MC Burgmans, TS Meijer, CH Martini, FGJ Tijn, J Vuyk, et al. Prospective clinical and pharmacological evaluation of the Delcath System's second generation (GEN2) hemofiltration system in patients undergoing percutaneous hepatic perfusion with melphalan. *Cardiovasc Interv Radiol*. 2017;40(8):1196-1205.
  19. Hughes MS, Zager J, Faries M, Alexander HR, Royal RE, Wood B, et al. Results of a randomized controlled multicenter phase III trial of percutaneous hepatic perfusion compared with best available care for patients with melanoma liver metastases. *Ann Surg Oncol*. 2016;23(4):1309-1319.
  20. Vogl TJ, Zangos S, Scholtz JE, Schmitt F, Paetzold S, Trojan J, et al. Chemosaturation with percutaneous hepatic perfusions of melphalan for hepatic metastases: experience from two European centers. *Rofo*. 2014;186(10):937-944.
  21. Meijer TS, Geus-Oei LF, Martini CH, Tijn FGJ, Sitsen ME, van Erkel AR, et al. Embolization of variant hepatic arteries in patients undergoing percutaneous hepatic perfusion for unresectable liver metastases from ocular melanoma. *Diagn Interv Radiol*. 2019;25(6):451-458.
  22. Meijer TS, Burgmans MC, de Leede EM, de Geus-Oei LF, Boekestijn B, Handgraaf HJM, et al. Efficacy of percutaneous hepatic perfusion with melphalan in patients with unresectable ocular melanoma metastases confined to the liver: a prospective phase II study. *Ann Surg Oncol*. 2021;28(2):1130-1141.
  23. Savier E, Azoulay D, Huguet E, Lokiec F, Gil-Delgado M, Bismuth H. Percutaneous isolated hepatic perfusion for chemotherapy: a phase 1 study. *Arch Surg*. 2003;138(3):325-332.
  24. Miao N, Pingpank JF, Alexander HR, Steinberg SM, Beresneva T, Quezado ZM. Percutaneous hepatic perfusion in patients with metastatic liver cancer: anesthetic, hemodynamic, and metabolic considerations. *Ann Surg Oncol*. 2008;15(3):815-823.
  25. Pingpank JF, Libutti SK, Chang R, Wood BJ, Neeman Z, Kam AW, et al. Phase I study of hepatic arterial melphalan infusion and hepatic venous hemofiltration using percutaneously placed catheters in patients with unresectable hepatic malignancies. *J Clin Oncol*. 2005;23(15):3465-3474.
  26. Burgmans MC, de Leede EM, Martini CH, et al. Percutaneous isolated hepatic perfusion for the treatment of unresectable liver malignancies. *Cardiovasc Intervent Radiol*. 2016;39(6):801-814.
  27. Eisenhauer EA, Therasse P, Bogaerts J, et al. New response evaluation criteria in solid tumours: revised RECIST guideline (version 1.1). *Eur J Cancer*. 2009;45:228-247.
  28. Mambrini A, Sanguinetti F, Pacetti P, Caudana R, Iacono C, Guglielmi A, et al. Intra-arterial infusion of 5-fluorouracil, leucovorin, epirubicin, and carboplatin (FLEC regimen) in unresectable pancreatic cancer: results of a ten-year experience. *In Vivo*. 2006;20(6A):751-755.



29. Marquardt S, Kirstein MM, Brüning R, Zeile M, Ferrucci PF, Prevoo W, et al. Percutaneous hepatic perfusion (chemosaturation) with melphalan in patients with intrahepatic cholangiocarcinoma: European multicentre study on safety, short-term effects and survival. *Eur Radiol.* 2019;29(4):1882-1892.