



Universiteit  
Leiden  
The Netherlands

## **In vitro and in vivo immunogenicity assessment of protein aggregate characteristics**

Thorlaksen, C.; Schultz, H.S.; Gammelgaard, S.K.; Jiskoot, W.; Hatzakis, N.S.; Nielsen, F.S.; ... ; Groenning, M.

### **Citation**

Thorlaksen, C., Schultz, H. S., Gammelgaard, S. K., Jiskoot, W., Hatzakis, N. S., Nielsen, F. S., ... Groenning, M. (2023). In vitro and in vivo immunogenicity assessment of protein aggregate characteristics. *International Journal Of Pharmaceutics*, 631.  
doi:10.1016/j.ijpharm.2022.122490

Version: Publisher's Version

License: [Creative Commons CC BY 4.0 license](https://creativecommons.org/licenses/by/4.0/)

Downloaded from: <https://hdl.handle.net/1887/3567197>

**Note:** To cite this publication please use the final published version (if applicable).



## *In vitro* and *in vivo* immunogenicity assessment of protein aggregate characteristics

Camilla Thorlaksen<sup>a,b</sup>, Heidi S. Schultz<sup>c</sup>, Simon K. Gammelgaard<sup>d</sup>, Wim Jiskoot<sup>e</sup>, Nikos S. Hatzakis<sup>f,g</sup>, Flemming S. Nielsen<sup>h</sup>, Helene Solberg<sup>i</sup>, Vito Foderà<sup>b,\*</sup>, Christina Bartholdy<sup>c,j</sup>, Minna Groenning<sup>a,\*</sup>

<sup>a</sup> Biophysical analysis, Novo Nordisk A/S, Novo Nordisk Park 1, 2760 Måløv, Denmark

<sup>b</sup> Department of Pharmacy and Nanoscience Center, University of Copenhagen, Universitetsparken 2, 2100 Copenhagen, Denmark

<sup>c</sup> Screening and Bioassay Technology, Novo Nordisk A/S, Novo Nordisk Park 1, 2760 Måløv, Denmark

<sup>d</sup> MS characterization, Novo Nordisk A/S, Novo Nordisk Park 1, 2760 Måløv, Denmark

<sup>e</sup> Division of BioTherapeutics, Leiden University, Einsteinweg 55, 2300 RA Leiden, Netherlands

<sup>f</sup> Department of Chemistry and Nanoscience Center, University of Copenhagen, Universitetsparken 5, 2100 Copenhagen, Denmark

<sup>g</sup> Novo Nordisk Foundation Center for Protein Research, University of Copenhagen, Blegdamsvej 3B, 2200 Copenhagen, Denmark

<sup>h</sup> Discovery & Development PKPD, Novo Nordisk A/S, Novo Nordisk Park 1, 2760 Måløv, Denmark

<sup>i</sup> Clinical Immunogenicity analysis, Novo Nordisk A/S, Novo Nordisk Park 1, 2760 Måløv, Denmark

<sup>j</sup> In Vivo Biology and Biomarkers, LEO Pharma A/S, Industriparken 55, 2750 Ballerup, Denmark (Current)

### ARTICLE INFO

#### Keywords:

Aggregate  
Anti-drug antibody  
Human insulin  
Immunogenicity  
Particles

### ABSTRACT

The immunogenicity risk of therapeutic protein aggregates has been extensively investigated over the past decades. While it is established that not all aggregates are equally immunogenic, the specific aggregate characteristics, which are most likely to induce an immune response, remain ambiguous. The aim of this study was to perform comprehensive *in vitro* and *in vivo* immunogenicity assessment of human insulin aggregates varying in size, structure and chemical modifications, while keeping other morphological characteristics constant. We found that flexible aggregates with highly altered secondary structure were most immunogenic in all setups, while compact aggregates with native-like structure were found to be immunogenic primarily *in vivo*. Moreover, sub-visible (1–100 µm) aggregates were found to be more immunogenic than sub-micron (0.1–1 µm) aggregates, while chemical modifications (deamidation, ethylation and covalent dimers) were not found to have any measurable impact on immunogenicity. The findings highlight the importance of utilizing aggregates varying in few characteristics for assessment of immunogenicity risk of specific morphological features and may provide a workflow for reliable particle analysis in biotherapeutics.

### 1. Introduction

Biotherapeutics are an important and growing class of medicines, however they may lead to immune responses, such as anti-drug antibody (ADA) formation, which can compromise product efficacy and patient safety (Rosenberg and Sauna, 2018). Many patient- and product-specific factors are involved in the onset and progression of immunogenicity (Dingman and Balu-Iyer, 2019; Schellekens, 2005), and protein aggregation has been reported to be one of the major contributors to unwanted immunogenicity of biotherapeutics (Rosenberg, 2006). Examples of marketed products where ADA formation in patients was

attributed to the presence of aggregates in the formulation are recombinant human erythropoietin (EPO) and interferons (Barnard et al, 2013; Kotarek et al, 2016; Seidl et al, 2012). Aggregation is an inherent capability of proteins and can occur at several stages during the product life-cycle, such as manufacturing, storage and patient handling (Gerhardt et al, 2014; Her and Carpenter, 2020; Randolph et al, 2015; Ueda et al, 2019; Walchli et al, 2020). Depending on external conditions, such as formulation (pH, ionic strength, etc.) and applied stress (shear force, temperature, primary packaging, etc.), the protein can undergo conformational changes leading to aggregates with various morphologies and physicochemical properties (Joubert et al, 2011; Mahler et al,

\* Corresponding authors.

E-mail addresses: [vito.fodera@sund.ku.dk](mailto:vito.fodera@sund.ku.dk) (V. Foderà), [mgqj@novonordisk.com](mailto:mgqj@novonordisk.com) (M. Groenning).

<https://doi.org/10.1016/j.ijpharm.2022.122490>

Received 7 October 2022; Received in revised form 6 December 2022; Accepted 8 December 2022

Available online 13 December 2022

0378-5173/© 2022 The Author(s). Published by Elsevier B.V. This is an open access article under the CC BY license (<http://creativecommons.org/licenses/by/4.0/>).

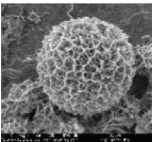
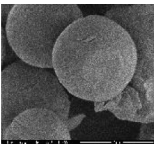
2009). However, it is currently not well understood how specific characteristics of protein aggregates impact immunogenicity (Bee et al, 2012; Rosenberg, 2006).

Current studies in the field have led to ambiguous results regarding which aggregate features contribute to drug immunogenicity (Hermeling et al, 2004). Some studies have suggested that highly aggregated samples are the most immunogenic (Barnard et al., 2013; Joubert et al, 2012), whereas others have found that even minute amounts of aggregate present in the therapeutic product seem to impact the risk of immunogenicity (Ahmadi et al, 2015). Another feature that has been widely discussed is stress-induced chemical modifications, such as oxidation. Some studies found oxidized species to be highly immunogenic (Boll et al, 2017; Filipe et al, 2012; van Beers et al, 2011), whereas others did not find evidence for this (Moussa et al, 2016a). The role of other chemical modifications, such as deamidation, is still not well described (Hermeling et al., 2004). Linking specific aggregate sizes to immunogenicity has likewise been evaluated. In this regard, all sizes ranging from sub-visible (1–100  $\mu\text{m}$ ) to sub-micron particles (0.1–1  $\mu\text{m}$ ) have been found to contribute to immunological reactions (Joubert et al., 2012; Kijanka et al, 2018; Telikepalli et al, 2015). Lastly, protein structure has been indicated as a possible factor impacting the immunogenicity. Misfolded protein aggregates might present different epitopes, which appear as foreign compared to native-like aggregates, with the risk of breaking self-tolerance. Nevertheless, both highly structurally-altered but also native-like aggregates have been shown to pose a risk (Freitag et al, 2015; Hermeling et al., 2004; Hermeling et al, 2006). The current studies mostly utilize monoclonal antibodies (mAbs) or pharmaceutical products already on the market, stressing them in various ways (heat, stirring, oxidation) and investigating the immunogenicity potential either *in vitro* or *in vivo*. However, the heterogeneity of the generated aggregate populations renders it difficult to disentangle the specific aggregate feature(s) impacting the immunogenicity potential (Boll et al., 2017). To get more clarity on this, a comprehensive and systematic approach is needed, where a detailed control of the aggregate formation and characteristics can help to directly couple the aggregate features to the immunological outputs.

Here we report on a systematic workflow to determine the profound immunogenic potential of specific aggregate characteristics. To achieve this we optimized protocols controlling the aggregation process and sample handling procedures, so that samples containing aggregates

varying in a few morphological features could be obtained (Thorlaksen et al, 2023). We focused on four types of aggregates formed from recombinant human insulin. Two of the aggregates consisted of spherulites, which are micron-sized spherical superstructures, and consists of fibril-like protein material radially growing from a disordered core (De Luca et al, 2020; Krebs et al, 2004). The two spherulites had similar morphological appearance and size, but markedly varied in the  $\beta$ -sheet content (Thorlaksen et al, 2022a). The other two aggregates consisted of particulates, which are compact spherical structures ranging in size from nanometres to a few microns, where only minor secondary structural changes are induced upon aggregation (Foderà et al, 2014; Krebs et al, 2007). The particulates had similar morphological appearance, but markedly varied in size and also, to some extent, in secondary structure (Thorlaksen et al, 2022b). A detailed protocol for producing and characterizing the tested aggregates has been recently published by our group (Thorlaksen et al., 2022a; Thorlaksen et al., 2022b). Since highly relevant for the present publication, key characteristics are summarized in Table 1 together with new data quantifying the presence of chemical modifications. To assess the immunogenic potential of specific aggregate characteristics, the human DC response towards the aggregates was examined *in vitro* by measuring up-regulation of activation markers on the cell surface as well as inflammatory cytokine production. Activation of human CD4<sup>+</sup> T-cells was evaluated based on cytokine secretion and cell proliferation upon co-culture with activated DCs pre-exposed to the aggregates. The aggregates were also tested *in vivo* by subcutaneous injections into BALB/c mice, where ADA formation towards human insulin was used as a direct measure of the immunogenicity. Our capacity to produce aggregate preparations with tuneable and controlled morphological features combined with comprehensive immunogenicity assessment *in vitro* and *in vivo* offered a detailed characterization of the link of aggregate features to immunological response. Despite the different criteria for immunogenicity between the *in vitro* and *in vivo* studies, we found a good correlation, where sub-visible aggregates with drastic structural alterations provided the highest immunological response in all cases.

**Table 1**  
Overview of the tested samples and their characteristics.

Sample*		Appearance & size		Secondary structure $\beta/\alpha$ -ratio	Chemical modifications				
Name	Type	Shape & density	Diameter		HI	HI + Deamid.	2HI-NH <sub>3</sub>	HI-NH <sub>3</sub>	+C <sub>2</sub> H <sub>4</sub> species
Ins	Unstressed human insulin	Hexameric	5.1 nm	0.51 $\pm$ 0.03	99.07 % $\pm$ 0.20 %	0.93 % $\pm$ 0.21 %	ND	ND	ND
Sph $\beta$	Spherulite		15–20 $\mu\text{m}$	1.86 $\pm$ 0.10 (****)	80.37 % $\pm$ 1.72 %	19.63 % $\pm$ 1.72 %	ND	ND	ND
Sph $\alpha$				1.44 $\pm$ 0.09	73.73 % $\pm$ 1.16 %	22.40 % $\pm$ 0.53 %	ND	ND	3.90 % $\pm$ 0.60 % (**)
ParS	Particulate		200–300 nm	0.90 $\pm$ 0.02 (**)	69.60 % $\pm$ 7.70 %	6.43 % $\pm$ 0.93 %	20.87 % $\pm$ 7.28 % (*)	3.07 % $\pm$ 1.20 %	ND
ParL			200–300 nm & 3–5 $\mu\text{m}$	0.68 $\pm$ 0.06	87.80 % $\pm$ 2.40 %	5.03 % $\pm$ 0.21 %	6.10 % $\pm$ 2.15 %	1.00 % $\pm$ 0.10 %	ND

**Abbreviations and notes:** \*For all the tested samples, a protein concentration of 100  $\mu\text{g}/\text{mL}$  was used for the *in vitro* immunogenicity assays, while a protein concentration of 80 nmol/kg at dose 5 mL/kg was used for the *in vivo* immunogenicity assay. Not detectable (ND), significance level determined between aggregates of same type performed with two-sided *t*-test ( $p < 0.05$ ), secondary structure  $\beta/\alpha$ -ratio calculated from FTIR data as (1627  $\text{cm}^{-1}/1656 \text{cm}^{-1}$ ), chemical modifications quantified by LC-UV-MS relative to unmodified human insulin (HI) peak. Deamid. is deamidation products, 2HI-NH<sub>3</sub> are covalent dimer products, HI-NH<sub>3</sub> are covalent monomer products and + C<sub>2</sub>H<sub>4</sub> species are ethylated products. Data on size and secondary structure are provided from (Thorlaksen et al., 2022a; Thorlaksen et al., 2022b).

## 2. Results

### 2.1. Biophysical characterization of aggregates and unstressed insulin

Four aggregate samples were produced for immunogenicity assessment; two samples containing spherulites and two samples containing particulates (see Materials and Methods for details). Before testing the aggregate samples in our immunogenicity assessment assays, they were comprehensively characterized and their original solvent was exchanged to phosphate buffer saline (PBS, pH 7.2–7.4) by dialysis. The complete characterisation findings are presented in two independent papers recently published by our group (Thorlaksen et al., 2022a; Thorlaksen et al., 2022b) and are summarized in Table 1 in terms of appearance, size and secondary structure.

The two spherulite preparations consisted of micron-sized (15–20  $\mu\text{m}$ ) spherical aggregates with a flexible structural appearance (open, loose and less compact structure), as visualized by the scanning electron microscopy (SEM) image in Table 1. Spherulites are known to consist of fibril-like material and are expected to exhibit a drastic increase in  $\beta$ -sheet formation compared to unstressed protein (Krebs et al., 2004). Interestingly, the  $\beta$ -sheet content can be decreased by forming the spherulites in ethanol (Sph $\alpha$ ,  $\beta/\alpha$ -ratio  $\sim 1.44$ ) compared to when formed in acetic acid (Sph $\beta$ ,  $\beta/\alpha$ -ratio  $\sim 1.86$ ). The two particulate preparations consisted of compact spherical aggregates, as can be visualized by the SEM image in Table 1. The particulates formed at pH 4.1 (ParS) were in the nano size range (200–300 nm), while particulate samples formed at pH 4.3 (ParL) was a mixture consisting of both particles similar to the ParS sample and particulates in the micron range (3–5  $\mu\text{m}$ ). The nano-sized particulates in ParS had an increased  $\beta$ -sheet content ( $\beta/\alpha$ -ratio  $\sim 0.90$ ), when compared to the micron-sized particulates found in ParL ( $\beta/\alpha$ -ratio  $\sim 0.68$ ). Nevertheless, the particulates are considered more native in terms of secondary structure alterations ( $\beta/\alpha$ -ratio  $< 1$ ), than both the spherulites (see Fig. S1).

An unstressed human insulin sample (Ins) was used as a reference control in all the biological assays, to assess whether protein aggregation enhances the immunogenicity potential. The Ins sample was characterized by dynamic light scattering (DLS) to evaluate the protein oligomerization state in our formulation condition (1 mg/mL zinc-complexed human insulin in phosphate buffer saline, pH 7.2–7.4). An apparent hydrodynamic diameter of 5.1 nm indicates that the insulin is in its hexameric form, which is the expected dominant oligomerization state at physiological pH, when zinc is present (Schack et al., 2019). The secondary structure of the Ins sample was analysed with FTIR spectroscopy. Unstressed human insulin has a mainly  $\alpha$ -helical structure (see Fig. S1). FTIR measurements on the Ins sample provided a calculated  $\beta/\alpha$ -ratio of 0.51.

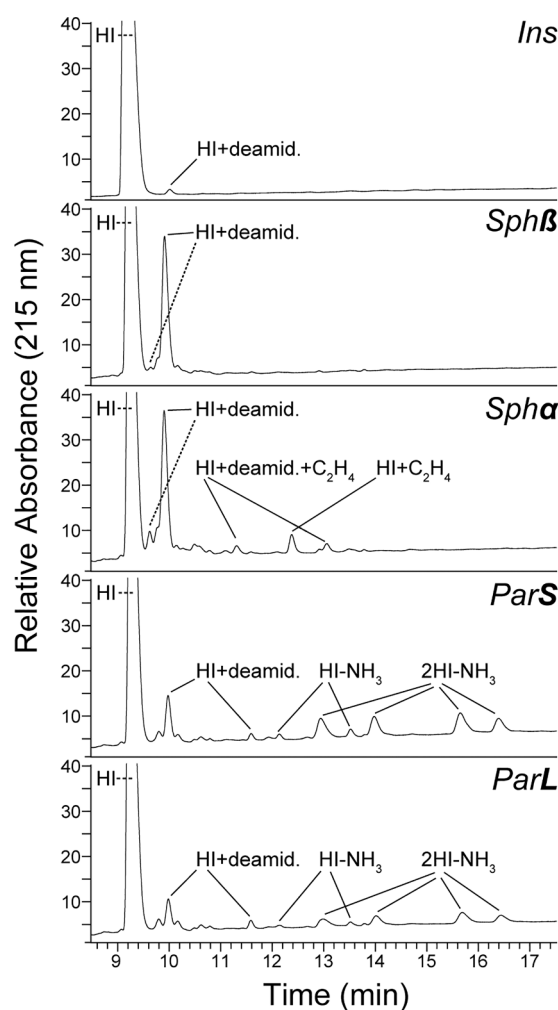
### 2.2. Chemical characterization of aggregates and unstressed insulin

*In vitro* formation of insulin aggregates takes place in harsh conditions (high temperature and low pH), which could potentially induce chemical modifications of the human insulin molecules. We therefore investigated whether our aggregate preparations contained any chemically modified insulin molecules by dissociating the aggregates via a high pH treatment followed by a low pH treatment. We then analysed the samples (including Ins as reference) with reversed-phase liquid chromatography coupled to UV detection followed by mass spectrometry (LC-UV-MS).

Interestingly, we found that the pH treatment, which was used to dissociate the aggregates for LC-MS analysis, induced degradation of the intermolecular disulphide bonds between the A-chain (AC) and B-chain (BC) in the insulin structure (see Fig. S2). Alkaline pH can degrade disulphide bonds via  $\beta$ -elimination, which releases  $\text{H}_2\text{S}$  (Florence, 1980; Wang et al., 2010) as well as introduces scrambling (Nagy, 2013; Trivedi et al., 2009). Dissolved  $\text{H}_2\text{S}$  has been shown to convert disulphide bonds into trisulfide bonds in proteins (Gu et al., 2010; Hemmendorff et al.,

2007). In the case of human insulin, the  $\beta$ -elimination in the interchain disulphide bonds combined with the scrambling into intrachain bonds could produce the free AC and BC species observed during the alkaline conditions. Moreover, we observed variations in the quantity of the degradation products between the aggregate types. This could suggest that the degradation induced by the pH treatment is dependent on the compactness of the structure and thus solvent accessibility. The samples, which were tested in the biological assays, did not undergo this pH treatment and most likely do not contain the mentioned degradation products. These products were therefore excluded from the further data analysis.

The major constituent in all the analysed samples was unmodified insulin (HI  $> 70\%$ ), while a fraction of the aggregates contained covalent alterations, primarily deamidation and dimerization (see Fig. 1 and Table 1). In both spherulite preparations,  $\sim 20\%$  of the insulin had been deamidated, whereas in Sph $\alpha$  additionally  $\sim 4\%$  was ethylated ( $+\text{C}_2\text{H}_4$  species). The ethylation was found to be a result of the ethanol present in the formulation upon stress application. In the particulate preparations deamidated insulin ( $\sim 5\text{--}6\%$  for both preparations) was also found. Furthermore, two types of crosslinking products were found:



**Fig. 1. Identification of chemical modifications.** Representative LC-UV-MS chromatograms of all tested compounds, where UV detection at 215 nm used for quantification of the chemical modifications formed during aggregation is illustrated. Chemical modification products observed after the main peak of unmodified human insulin (denoted HI) identified by mass spectrometry are annotated in the chromatograms for each sample. Aggregates were dissociated before sample analysis utilizing a high pH treatment followed by a low pH treatment.

the monomer either formed intramolecular crosslinking to preserve the monomeric status (HI-NH<sub>3</sub>) or two chemical groups from each monomer formed a covalent dimer through intermolecular crosslinking (2HI-NH<sub>3</sub>). Insulin dimers corresponding to 2HI-NH<sub>3</sub> are common chemical degradation products that have previously been characterized (Darlington and Anderson, 1995; Hjorth et al., 2015). The crosslink sites were identified between the AC at Asn21 and BC at either the N-terminus or Lys29. In the two particulate preparations we observed a small amount of HI-NH<sub>3</sub> products (1–3 %), which were statistically indistinguishable. However, ParS was found to have a significantly higher amount of 2HI-NH<sub>3</sub> products (~21 %) compared to ParL (~6%). This could indicate that the covalent dimerization occurs primarily during the formation of the nanosized particulates.

### 2.3. *In vitro* immunogenicity assessment of the aggregates

Generation of high affinity ADAs is complex and initially involves uptake, processing and activation of antigen-presenting cells (APC), such as dendritic cells (DCs), by the drug (Duke and Mitra-Kaushik, 2020). We developed an *in vitro* protocol for testing the immunogenicity potential of the aggregates, which allowed us to evaluate different stages of immune activation, spanning both the innate (DC activation) and adaptive (CD4<sup>+</sup> T-cell activation) immune response (illustration in Fig. S4). We aimed at including donors in our study with specific HLA

haplotypes (see Table S1), which were capable of binding insulin-derived peptides as assessed by *in silico* peptide-MHC II binding prediction (see Fig. S3).

We initially investigated whether our aggregate preparations had the ability to activate monocyte-derived dendritic cells (moDC) in a similar manner as seen for other biotherapeutics in previously published literature (Ahmadi et al., 2015; Morgan et al., 2019).

Activated moDCs are characterized by up-regulation of co-stimulatory molecules and maturation markers, secretion of inflammatory cytokines and chemokines, and lastly presentation of T-cell epitopes by MHC-II. MoDC activation was evaluated based on surface expression of the CD4<sup>+</sup> T-cell co-stimulatory molecules CD80, CD86 and CD40 and maturation marker CD83. Stimulation with the positive controls (KLH and LPS) resulted in a significant up-regulation of all markers, compared to Ins (see Fig. S5). Treatment with the aggregate preparations mostly led to minor increases in the surface marker expressions. Only stimulation with ParS led to a significant increase in CD80 and CD86 expression, compared to Ins. MoDC's stimulated with Sphβ also showed trends of an increase in the average stimulation index (SI) for CD80, CD86 and CD40, however not statistically significant (see Fig. S5B). Secretion of inflammatory cytokines (IL-1β, IL-6 and TNF-α) and chemokine (IL-8) in the supernatant of the stimulated moDCs was likewise examined. In general, a significant increase in cytokines and chemokine was observed for the positive controls (KLH and LPS), when compared to

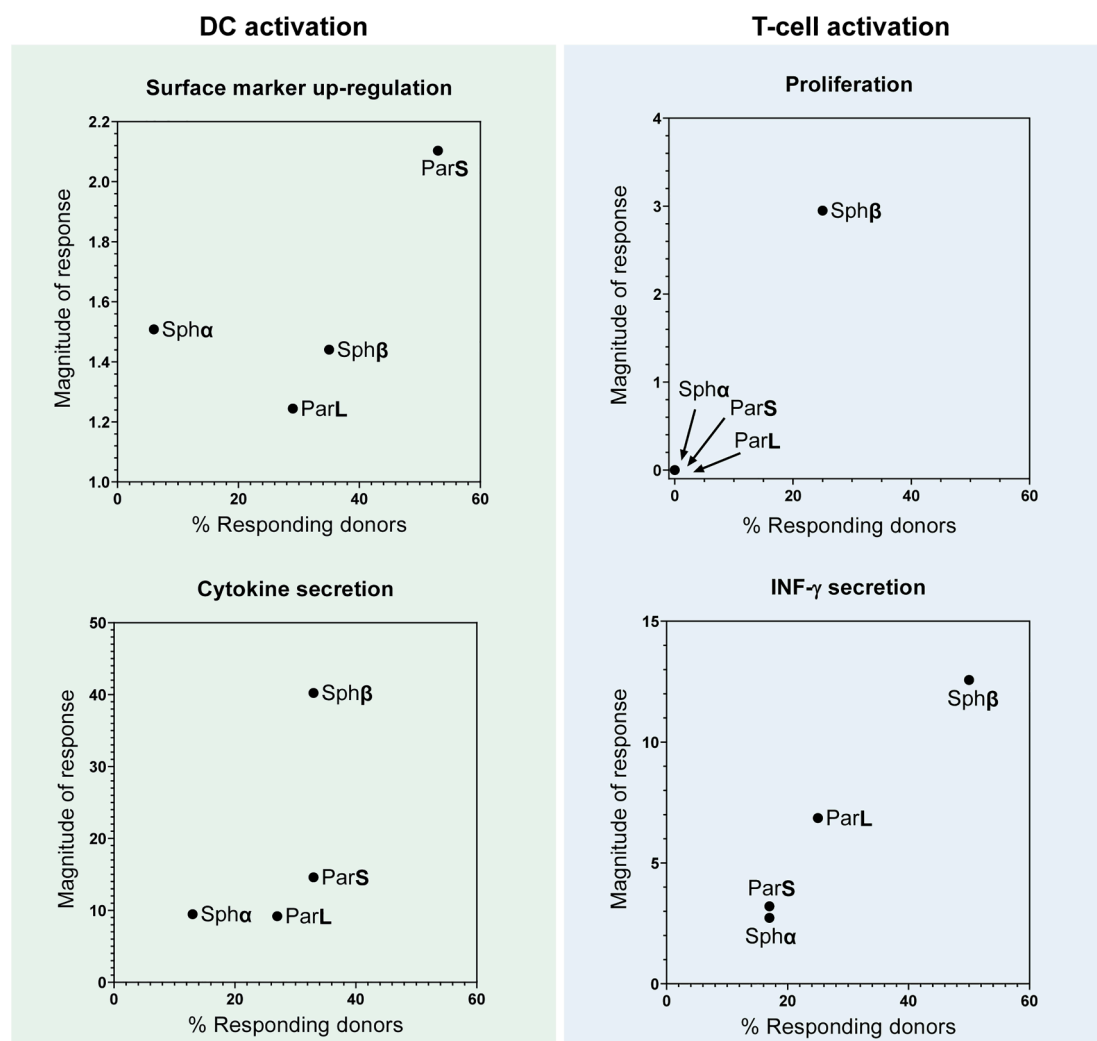


Fig. 2. Percentage of responding donors vs magnitude of response evaluated for all four *in vitro* immunogenicity assays. The % responding donors are determined on single donor level for each assay and magnitude of response is the calculated average response (SI) for responding donors only. All aggregate samples are compared against the unstressed human insulin control (Ins).

Ins. Upon stimulation with the aggregate preparations, only Sph $\beta$  showed an increase in IL-1 $\beta$  and IL-6 secretion, the latter being statistically significant (see Fig. S6).

T-cell activation and subsequent interaction with a cognate B-cell is an important step for ADA formation. The ability of the aggregate-stimulated moDCs to induce T-cell activation was evaluated by cell proliferation and secretion of the effector cytokine IFN- $\gamma$ . The positive control (KLH) and Sph $\beta$  induced significant T-cell proliferation, when compared to Ins (see Fig. S7). The other aggregate preparations did not induce any proliferation. IFN- $\gamma$  secretion was measured at single cell level by fluorospot analysis (see Fig. S8A). KLH induced a high IFN- $\gamma$  response in all donors. For the aggregates, we observed that both Sph $\beta$  and ParL induced a significant IFN- $\gamma$  response, compared to Ins (see Fig. S8B). These results suggest that the aggregate-stimulated moDCs can facilitate activation of CD4<sup>+</sup> T-cells.

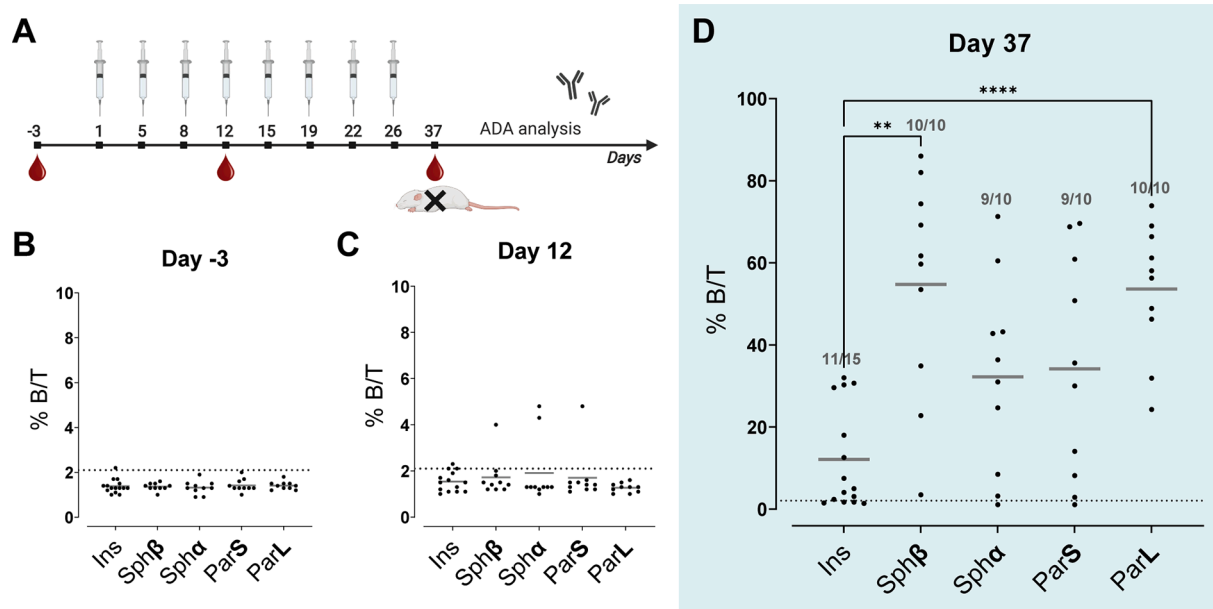
To provide a relative immunogenicity risk ranking of the aggregates, we calculated the percentage of responding donors and the magnitude of response for each of the four readouts (see Fig. 2). The frequency of responding donors and the corresponding magnitude (mean SI of the responding donors) was determined at single donor level. The criteria for a positive response were defined based on assay sensitivity and in accordance with other published papers (Joubert et al, 2016; Morgan et al., 2019; Schultz et al, 2017). The response to the aggregates was compared directly with the response to Ins. For the two DC activation assays, we found that > 33 % of the tested donors responded to Sph $\beta$  and ParS. ParS upregulated surface marker expression in 53 % of the analysed donors with a magnitude of response at 2.1 relative to Ins, where Sph $\beta$  provided the highest cytokine secretion response with a magnitude of response at 40, relative to Ins. Moreover, 27–29 % of the donors responded to ParL and <13 % of the donors responded to Sph $\alpha$ . In the T-cell proliferation assay we observed that donors only responded to Sph $\beta$  (25 %), whereas the IFN- $\gamma$  secretion assay allowed for a differentiation of the response to the aggregates. Here we found that 50 % of the donors responded to Sph $\beta$  and 25 % responded to ParL, while only 17 % of the donors responded to ParS and Sph $\alpha$ . Not all responding donors correlated across assays. However, based on the *in vitro* results, Sph $\beta$  appears

to have the highest immunogenicity potential across all four assays, followed by ParL, ParS and lastly Sph $\alpha$ .

#### 2.4. *In vivo* immunogenicity assessment of the aggregates

Even though human *in vitro* assays have become a valuable tool for assessing aggregate-related immunogenicity in terms of T cell activation, they do not address the complete and complex interplay between all components of the immune system, ultimately leading to activation of drug-specific B cells and production of high-affinity ADA responses (Jiskoot et al, 2016). Thus, BALB/c mice were repeatedly injected for 4 weeks with either Ins or aggregates to investigate whether the aggregates could enhance the development of anti-human insulin antibodies (see Fig. 3A). Although rodent *in vivo* models are generally considered poor predictors of human immunogenicity (Ratanji et al, 2014), we found it relevant to use them in this context as we were interested in examining adjuvant effects of the different aggregates rather than MHC-restricted responses to insulin-derived peptides. Human insulin is expected to be immunogenic in mice due to inadequate sequence homology to murine insulin and we therefore measured relative immunogenicity of the different aggregates rather than break of tolerance towards human insulin.

The baseline levels of anti-human insulin antibodies in the mice were found to be similar to the assay blank controls and allowed calculating a “cut-off” point (% B/T = 2.1), from which we could define positive responses (see Fig. 3B). After 12 days of injections, no significant ADA responses were observed for either of the tested samples (see Fig. 3C). However, at day 37, 49 out of 55 mice had developed anti-human insulin antibodies against our test samples (see Fig. 3D). Ins induced ADA responses in 11/15 mice correlating with the lack of full sequence homology between human and mouse insulin and consequently lack of central tolerance towards human insulin in mice. Sph $\beta$  and ParL provided a statistically significant enhancement of the ADA response, compared to Ins both in terms of the frequency of responding mice and the magnitude of the response. Further analysis of the aggregate samples showed that the magnitude of the response induced by ParL was



**Fig. 3.** *In vivo* immunogenicity evaluation. A Graphical illustration of the experimental setup where BALB/c mice were injected SC twice-weekly with either Ins or aggregates. Blood plasma was collected at day -3, day 12 and day 37 and examined for the presence of ADAs by RadioImmuno Assay (RIA). The illustration was created with BioRender.com. B ADA assessment from blood plasma collected at day -3. C ADA assessment from blood plasma collected at day 12. D ADA assessment from blood plasma collected at day 37. Data information: The stippled line defines the “cut-off” point which is the average ADA response from day -3 plus 3 standard deviations. All responses above the “cut-off” point is considered positive. ADA titres are defined as %B/T in RIA. Significance level is evaluated by a one-way ANOVA Dunnett’s T3 multiple comparisons test.

significantly higher than that induced by Sph $\alpha$  and ParS. The magnitude of response induced by Sph $\beta$  was significantly higher than Sph $\alpha$ , but comparable to the response induced by ParS. Likewise, Sph $\beta$  and ParL induced comparable magnitude of ADA responses. The results suggest that Sph $\beta$  and ParL have the highest immunogenicity potential of the tested aggregates, followed by ParS and Sph $\alpha$ .

### 3. Discussion

Aggregates are a major concern due to their potential to enhance the immunogenicity risk of a biotherapeutic protein. Yet the specific aggregate characteristics (e.g. size, secondary structure, chemical modifications) that are most likely to provoke an immune response are still ambiguous. To acquire this knowledge, we performed a comprehensive immunogenicity assessment of aggregates with well-defined features. This was possible as our earlier studies offered a detailed understanding and control of the production of human insulin aggregates with tuneable morphological characteristics. Even though healthy donors should be tolerant to human insulin, low amounts of insulin auto-antibodies have been found in healthy donors indicating that some degree of break of tolerance can occur, which aggregates may accelerate (Williams et al, 1997). For our *in vitro* studies, we primarily included donors with specific human leukocyte antigen (HLA) haplotypes, HLA-DQ, suggested to play a role in the selection and activation of autoreactive T cells to increase the likelihood of provoking a T-cell response. By *in silico* peptide:MHC II binding prediction, we confirmed binding of insulin-derived peptides from the A and B chain to the selected HLA alleles, which is considered a pre-requisite for T-cell activation and subsequent ADA development.

DC activation is a decisive factor for whether a subsequent adaptive response, here measured as T-cell activation, is likely to be induced. Aggregates have the potential of providing an adjuvant effect by ensuring a larger delivery of epitopes for the T-cell due to the increased amount of protein molecules taken up and degraded by the DCs. Currently there is not much literature on the features protein aggregates should possess to obtain optimal DC uptake and presentation, or the activation mechanism. From vaccine research, parameters such as size, shape, dose and rigidity (compact vs flexible) are important for orchestrating an immune response (Benne et al, 2016). Some studies found that compact aggregates are more readily taken up by DCs than flexible particles (Christensen et al, 2012), and that larger particles (>500 nm) could enhance T-cell activation compared to smaller particles (Brewer et al, 2004). We would intuitively expect that the compact nanometre size particulates (200–300 nm) in the ParS and ParL preparations might be optimal for DC uptake, but not necessarily lead to a potent T-cell activation. In contrast, the spherulite preparations having a more flexible structure might activate the DCs via other routes, like receptors that recognize foreign repetitive motifs such as pathogen-associated molecular patterns (PAMPs) or by binding of complement components, which could facilitate subsequent T-cell activation (Moussa et al, 2016b). We observed that ParS were able to up-regulate the expression of co-stimulatory surface markers in > 50 % of the tested donors, but only with a subtle magnitude of response. Moreover, ParS did not induce any T-cell activation, suggesting that this aggregate type is only slightly immunogenic. We observed no indication of DC activation for the ParL preparation. Nevertheless, ParL induced a potent adaptive response both *in vitro* (IFN- $\gamma$  secretion) and *in vivo* (ADA formation). The two particulate preparations have similar appearance, deamidation content and a native-like secondary structure ( $\beta/\alpha$ -ratio < 1), but ParL had a distinct micron-sized particle population and ParS had a significantly higher content of covalent dimers (~21 %). ParL induced an adaptive response unlike ParS, indicating that the presence of covalent dimers did not affect the immunogenicity potential. Thus our results suggest that the difference in immune activation is mainly due to the different size of these particles, where micron-sized particles (3–5  $\mu$ m) provided a stronger immune activation than nanosized particles.

For the spherulite preparations, we found Sph $\beta$  to be most immunogenic and Sph $\alpha$  to be the least immunogenic both *in vitro* (proliferation and IFN- $\gamma$  secretion) and *in vivo* (ADA titres). The two preparations have similar appearance, size and deamidation content, however Sph $\alpha$  contain less aggregated  $\beta$ -sheet compared to Sph $\beta$  and was found to be slightly ethylated (~4%). Sph $\alpha$  did not lead to any measurable immune activation, hence we would not expect the ethylation nor deamidation to impact the immunogenicity potential. Therefore our data suggest that the difference in secondary structural features ( $\beta/\alpha$ -ratio) from 1.44 (Sph $\alpha$ ) to 1.86 (Sph $\beta$ ) may play a key role in the change of immune activation observed. Interestingly, these findings would also suggest that there might be a threshold for how much the secondary structure would have to be altered before the aggregates possess an increased immunogenic risk.

Even though *in vitro* assays have become a valuable tool for predicting aggregate-related immunogenicity, they do not cover all components of the complex immunological response leading to ADAs, e.g. T-cell dependent B-cell activation and antibody production. Moreover, the organized repetitive epitopes of aggregates might activate the immune system in a T-cell-independent pathway by direct B-cell receptor binding or through cross-linking of several B-cell receptors (Ratanji et al., 2014; Sauerborn et al, 2010; Wang et al, 2012). In our *in vivo* studies, we observed the micron-sized particulates in the ParL preparation, which are compact and have the most native-like structure among the aggregates, to provide an equally strong ADA response as the flexible Sph $\beta$  particles with the most altered secondary structure. The Sph $\beta$  particles could induce a potent T-cell response *in vitro*, suggesting that the immune activation might be mainly driven by a T-cell dependent pathway for this particle type. For ParL particles, the ADA response measured *in vivo* was highly potent, whereas a less potent T-cell activation was observed (only IFN- $\gamma$  secretion). This could indicate that the immune activation might be driven by a T-cell independent pathway for this particle type. One hypothesis could be that the compactness and native-like structure of the ParL particles present repetitive conformational epitopes with an optimal spacing and rigidity for B-cell receptor cross-linking (Moussa et al., 2016b; Sauerborn et al., 2010). Further characterization of the specific ADA Ig isotypes induced by the individual aggregates would have to be performed to provide more solid knowledge as to the specific mode-of-action. The ADA Ig isotypes and the IgM/IgG ratio would be a good first indication of whether the T-cell independent pathway is driving the antibody response. Alternatively, ADA assessment could be explored in CD4 T cell-depleted mice for comparison. For the *in vitro* as well as *in vivo* experiments, it was only feasible to perform experiments using a single protein concentration. We carefully chose a dose that was found sufficiently high to result in reliable and significant immune responses without interfering with the integrity of the cells or being cytotoxic to cells or animals. We cannot exclude that testing at different doses could give different outcomes.

The results presented here are specifically related to insulin. The approach is instead general and can be applied to assess immunogenicity risk of aggregates formed from various therapeutic proteins (i.e. mAbs). To do so, a comprehensive knowledge of the selected protein's aggregation pathways must be obtained along with optimization of sample preparation to ensure sample homogeneity (same morphology). Our results show that this task proves challenging even with a known antigen model system such as insulin, and that the complexity increases once the aggregates are assessed in the biological assays. Moreover, the recombinant human insulin used in this study was expressed in yeast cells and it cannot be excluded that a human insulin molecule expressed in a different mammalian or bacterial cell line, can lead to a different glycosylation pattern, that would give a different immunogenicity profile. From this approach, it is thus not possible to relate the results directly to clinical immunogenicity and establishing a general and absolute ranking for the immunogenicity potential is premature. Yet, we can rank the aggregate characteristics relative to each other. Even though the criteria for immunogenicity assessment were different for

our *in vitro* and *in vivo* studies, the resulted ranking of the tested aggregates according to their immunogenicity potential was well correlated and are presented in Fig. 4.

#### 4. Conclusion

Protein aggregation has been reported to be one of the major contributors to unwanted immunogenicity of biotherapeutics. We found that all of the tested aggregate populations were more immunogenic than unstressed human insulin and that the degree of immune activation was dependent on the specific aggregate features. Aggregates containing flexible micron-sized particles with a highly altered secondary structure were found to be most immunogenic. Additionally, compact micron-sized particles with native-like structure were found to be immunogenic when examined *in vivo*. Particles in the sub-visible size range (1–100  $\mu\text{m}$ ) were found to be more immunogenic than particles in the sub-micron size range (0.1–1  $\mu\text{m}$ ). Lastly, we didn't find any indications that chemical modifications (deamidation, conjugated dimers or ethylation) to the insulin molecule would impact the immunogenicity potential. We found a good correlation for immunogenicity assessment in the *in vitro* and *in vivo* studies. This is very interesting as the criteria for immunogenicity assessment are different. Our studies suggest that distinct aggregate types can activate different immunological pathways, collectively contributing to drug immunogenicity, which highlights the complexity of predicting clinical immunogenicity. Importantly, further studies are necessary to elucidate the mechanism of activation of the immune system by the different aggregates.

The insights we attained here were only possible when detailed biophysical studies of aggregate formation and characteristics were combined with *in vitro* and *in vivo* immunogenicity examinations. This allowed us to augment our understanding on how diverse feature impart diverse physiological responses. The findings have implications for formulation optimization of novel biotherapeutic products as well as for investigative purposes upon product recall. We anticipate that our workflow may further be developed and can form the blueprint for future studies on diverse therapeutic proteins for gathering comprehensive knowledge on the morphological characteristics affecting immunogenicity of biotherapeutics. This would most certainly lead to a better understanding of, e.g., which size, shape and structure of inherent or intrinsic protein particles in the drug product will pose the largest risk with regard to immunogenicity.

#### 5. Materials and methods

##### 5.1. Sample preparations and characterization

###### 5.1.1. Unstressed human insulin

Zinc-complexed lyophilized recombinant human insulin (rh-HI), kindly provided by Novo Nordisk A/S, were dissolved in 200  $\mu\text{L}$  of 0.1 M HCl (Merck KGaA, Darmstadt, Germany), followed by addition of DPBS (Dulbecco's phosphate buffered saline, sterile, w/o calcium and

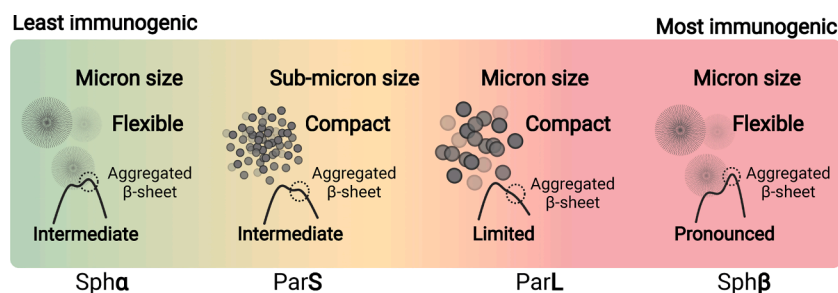
magnesium, pH 7.4, #14190–094, gibco, Life Technologies Limited, Paisley, UK) for a final concentration of 1 mg/mL for cell studies or 93  $\mu\text{g}/\text{mL}$  (80 nmol/kg) for animal studies. The pH of the solution was adjusted to pH 7.1–7.4 with 1 M NaOH (Merck KGaA, Darmstadt, Germany) and filtered with a silicone- and latex free syringe (#4050-X00V0, Henke Sass Wolf, Tuttlingen, Germany) through a 0.02  $\mu\text{m}$  inorganic membrane filter (Alumina-based, Anotop 10, #6809–1002, Whatman, Germany) (Ins sample). For cell studies, the unstressed sample was prepared fresh on the day of stimulation and stored in a 5 mL NUNC cryotube vial (#379146, Thermo Fisher Scientific, Nunc A/S, Roskilde, Denmark) at 5  $^{\circ}\text{C}$  until use. For animal studies, the unstressed sample was prepared once weekly and stored at 5  $^{\circ}\text{C}$  in 5 mL vials (#60.558.001, 57x15,3mm, Sarstedt AG & Co., Nümbrecht, Germany). The sample was used for two rounds of injections and hereafter discarded.

##### 5.2. Spherulite samples

Two spherulite samples were prepared according to the procedure reported in (Thørlaksen et al., 2022a). Briefly, rh-HI was prepared in either 20 % acetic acid (v/v from acetic acid glacial, Merck KGaA, Darmstadt, Germany), 0.3 M NaCl (Merck KGaA, Darmstadt, Germany) at pH 2.0 with final protein concentration of 1.75 mg/mL (Sph $\beta$  preparation) or in 40 % ethanol (v/v from ethanol absolute, Merck KGaA, Darmstadt, Germany), 0.25 M NaCl at pH 1.8 with final protein concentration of 5 mg/mL (Sph $\alpha$  preparation). Sample preparations were filtered through a 0.1  $\mu\text{m}$  inorganic membrane filter (Alumina-based, Anotop 25, #6809–2012, Whatman, Germany) using silicone- and latex-free syringes (#4050-X00V0, Henke Sass Wolf, Tuttlingen, Germany) directly into 15 mL Nunc conical centrifuge tubes (#339651, Thermo Fisher Scientific, NY, USA) (Thørlaksen et al., 2023). Hereafter, aliquotes of 1 mL sample solution were transferred to 1.5 mL Eppendorf tubes (#0030 120.086, Eppendorf AG, Germany) and placed into a thermomixer (ThermoMixer C, Eppendorf AG, Hamburg, Germany) at 55  $^{\circ}\text{C}$ , 0 rpm for 8 h.

##### 5.3. Particulate samples

The particulate samples were prepared according to the procedure reported in (Thørlaksen et al., 2022b). In short, 20 mM sodium acetate (Merck KGaA, Darmstadt, Germany) solution was added to rh-HI for a final concentration of 5 mg/mL. The solution was first titrated to pH 2.2 with 1 M HCl to dissolve the rh-HI, followed by titration with 1 M NaOH to reach a final pH of 4.1 (ParS preparation) or 4.3 (ParL preparation). The particulate samples were filtered in a similar manner as described above for the spherulites and aliquotes of 1 mL sample solution were transferred to 1.5 mL Eppendorf tubes. Samples were stressed in a thermomixer (thermomixer comfort, Eppendorf AG, Hamburg, Germany) at 80  $^{\circ}\text{C}$  for 2.5 h.



**Fig. 4. Ranking of immunogenicity potential of the tested aggregates.** Graphical illustration of the ranking from least to most immunogenic (Sph $\alpha$  < ParS < ParL < Sph $\beta$ ) from our *in vitro* and *in vivo* immunogenicity assessment. The aggregates are presented by the morphological characteristics, which we found to impact the immunogenicity (size, appearance and secondary structure).



#### 5.4. Solvent exchange by dialysis

Samples of spherulites and particulates were dialyzed against PBS (sterile, w/o calcium and magnesium, pH 7.2–7.4) before using them in cell- and animal studies, as described in (Thorlaksen et al., 2022a). Dialysis was executed at 4 °C to ensure particle integrity throughout the procedure. Particulate samples were dialyzed for 24 h, whereas spherulite samples were dialyzed for 48 h by using 100 kDa MWCO Float-A-Lyzer G2 dialysis devices (#G235059, Spectra/Por, Spectrum Laboratories Inc., CA, USA). Devices were cleaned prior to dialysis according to manufacturer recommendations. After sample recovery, the samples were stored at 5 °C for up to two weeks in 15 mL Nunc conical centrifuge tubes (#339651, Thermo Fisher Scientific, NY, USA) and then discarded.

#### 5.5. Determination of protein concentration in aggregated samples

To obtain an estimate of the final protein concentration in each sample after dialysis, the aggregates would need to be dissociated. Dissociation was obtained by increasing pH to above pH 12 with 1 M NaOH for 10 min in a small sample aliquot (500 µL) of spherulites or particulates. Hereafter, the pH was decreased to below pH 8 with 1 M HCl. Protein concentration was determined for each sample by absorbance at 276 nm using a SoloVPE instrument (C Technologies Inc., NJ, USA). The final protein concentration was adjusted to account for dilution from the pH treatment procedure (high pH treatment followed by a low pH treatment).

#### 5.6. Dynamic light scattering

To ensure hexamer formation in the **Ins** preparation, dynamic light scattering measurements were performed by using a DLS Dynapro II (Wyatt technology, CA, USA). **Ins** samples were always measured without further preparation. For analysis, 25 µL sample/well (in triplicates) was transferred into a 384 black microplate with transparent bottom (#ABA210100A, Aurora Microplate Products, MT, USA). Optical tape (#2239444, Bio-Rad Laboratories, USA) was used to cover the microplate top before centrifugation at 4000 rpm, 25 °C for 5 min to remove air bubbles from wells. Then, 10 µL/well silicone oil (#A12728, Alfa Aesar, ThermoFisher, Germany) was added on top of each sample. The instrument was left to equilibrate to 25 °C before measurements were started. 20 acquisitions of 2 s were used for each sample. The Dynamics software (version 7.9.1.4) automatically applied a cumulant fit to the data, which was used to estimate the sample hydrodynamic radii (nm) and polydispersity (%Pd).

#### 5.7. Scanning electron microscopy

Scanning electron microscopy measurements were carried out in high vacuum mode, the samples were thus dried before analysis. The dried material was added onto a specimen stage covered with carbon tape (Agar Scientific Ltd, Essex, UK) and sputter coated with 0.2 nm gold using a Leica Coater ACE 200 (Leica Microsystems, Wetzlar, Germany). Imaging was performed using a FEI Quanta 3D FEG Scanning Electron Microscope (Thermo Fisher Scientific, Hillsboro, OR, USA) with an Everhart-Thornley Detector (ETD) and high-resolution dual beam. The acceleration voltage was 2.00 kV for acquisitions of particulate samples and 5.00 kV for spherulite samples.

#### 5.8. Fourier-transform InfraRed spectroscopy

The **Ins** sample was prepared at a final protein concentration of 5 mg/mL for secondary structure analysis using a Tensor II Confocheck FTIR spectrophotometer with BioATR II module (Bruker Corporation, MA, USA). A background spectrum of PBS buffer (pH 7.2–7.4) was automatically subtracted from the protein spectra by the OPUS software (version 7.5.18) during measurements. Absorbance spectra were

acquired in the range 4000 cm<sup>-1</sup>–900 cm<sup>-1</sup> at a 4 cm<sup>-1</sup> resolution, where each spectrum was an average of 512 scans. Between protein samples, the ATR module was cleaned with deionized water and 70 % ethanol (v/v). The amide I peak (1600 cm<sup>-1</sup>–1710 cm<sup>-1</sup>) was used to evaluate structural features.

#### 5.9. Fourier-transform InfraRed data interpretation

To quantitatively compare secondary structural features between the different samples (unstressed and the aggregates), FTIR spectroscopy and FTIR microscopy data from (Thorlaksen et al., 2022a; Thorlaksen et al., 2022b) were adapted such that a ratio between alpha-helix content ( $\lambda = 1656 \text{ cm}^{-1}$ ) and beta-sheet content ( $\lambda = 1627 \text{ cm}^{-1}$ ) could be estimated. All spectra were baseline corrected in range 2300 cm<sup>-1</sup>–1800 cm<sup>-1</sup> and normalized to 1656 cm<sup>-1</sup>. Subsequently, the  $\beta/\alpha$ -ratio was calculated as (A1627 cm<sup>-1</sup> / A1656 cm<sup>-1</sup>).

#### 5.10. Liquid chromatography - mass spectrometry

An Acquity Classic UPLC (Waters, UK) was coupled to an Orbitrap Fusion Lumos with the H-ESI source (Thermo Scientific, CA, USA). The injection quantities were 1 µg HI. Reversed-phase chromatography was performed in an Acquity UPLC CSH C18 column at 1.0 × 150 mm, 1.7 µm (Waters, UK), with 0.1 % formic acid in water as solution A (LS118-1, Optima, Thermo Scientific, USA) and 0.1 % formic acid in acetonitrile (LS120-1, Optima, Thermo Scientific, USA) as solution B. The gradient was increasing from 20 % to 32 % solution B over 20 min with a flowrate of 100 µL/min and column temperature of 55 °C. UV detection was at 215 nm. For the mass spectrometry settings, electrospray ionisation was at 3.2 kV, AGC target at 200 k, and resolution at 120,000. The remaining settings were default. Xcalibur QualBrowser 4.2 (Thermo Scientific, USA) was used to analyse the LC-UV-MS data and quantify the UV-detected areas. The covalent products were quantified in triplicates from three separate batches of aggregate production.

#### 5.11. Endotoxin analysis of aggregates

All sample preparations were tested for endotoxin levels by a LAL (Limulus Amebocyte Lysate) assay in-house at Novo Nordisk prior to being used in the biological assays. Endotoxin levels > 1.00 EU/mL were found for all preparations.

## 6. Immunogenicity assessment

### 6.1. In silico peptide:MHCII binding prediction

#### 6.1.1. Prediction of human insulin-derived peptide:HLA binding affinities

The binding affinities of human insulin chain A and B to the most frequent European and North American HLA-DRB1, DQ and DP alleles was assessed using the affinity prediction algorithm NetMHCIIpan 3.0 ([www.cbs.dtu.dk/services/NetMHCIIpan/](http://www.cbs.dtu.dk/services/NetMHCIIpan/)), a software that predicts peptide–MHC-II binding affinities (Nielsen et al, 2008). An Epibar plot was generated to show the 9-mer core-binding peptide to the individual HLA class II alleles. The colours correspond to the binding affinity of the given allele. Two epitopes in both the A-chain and B-chain of human insulin were found to bind various HLA-DR/DP alleles, and especially specific HLA-DQ alleles of interest, indicating that they are capable of binding insulin (see Fig. S3).

### 6.2. In vitro immunogenicity

#### 6.2.1. Preparation of PBMCs and cell isolation

Blood was donated for research use by HLA-typed healthy volunteers via the Danish Blood Bank (Copenhagen, Denmark) under informed consent, according to protocol H-D-2008–113 and approved by the Danish Scientific Ethical Committee Region Hovedstaden (Legislative

Order no. 402 of May 28th 2008). Donations were fully anonymous to Novo Nordisk A/S employees. For the study, the aim was to include donors with HLA-DQ2 (DQA1\*0501/DQB\*0201) and HLA-DQ8 (DQA1\*0301/DQB1\*0302), which are HLA haplotypes known to play a part in type 1 diabetes (T1D) susceptibility (Erllich et al, 2008; Van Autreve et al, 2004). The complete donor list can be found in Table S1. PBMCs were purified from whole blood by density centrifugation using Ficoll-Plaque Plus (GE Healthcare, Uppsala, Sweden) in Leucosep™ tubes (#227290, Greiner Bio-One GmbH, Germany), followed by lysis of the red blood cells with RBC lysis buffer (eBioscience, San Diego, CA, USA). The PBMCs were washed twice in DPBS buffer (Dulbecco's phosphate buffered saline, sterile, w/o calcium and magnesium, pH 7.4, #14190-094, gibco, Life Technologies Limited, Paisley, UK) prior to monocyte and CD4<sup>+</sup> T-cell isolation. First, monocytes were isolated by positive selection using a CD14<sup>+</sup> microbeads human kit (#130-050-201, Miltenyi, Bergisch Gladbach, Germany). T-cells were isolated by negative selection from the CD14<sup>+</sup> fraction using a CD4<sup>+</sup> T-cell isolation kit, human (#130-096-533, Miltenyi, Bergisch Gladbach, Germany). Both isolation procedures were performed automatically by using an Auto-Macs Pro instrument (Miltenyi Biotech) according to the manufacturer's description. Cell purity in the isolated fractions was assessed by flow cytometry analysis and was found to be 93.9 ± 2.8 % for monocytes and 88.0 ± 4.9 % for CD4<sup>+</sup> T-cells. All the CD4<sup>+</sup> T-cells and a fraction of monocytes were frozen for later use with CryoStor® CS10 (#C2874, Sigma-Aldrich, MO, USA), slow-frozen at -1 °C/minute (CoolCell® LX, Corning) and stored at -80 °C. A graphical illustration of the full assay protocol can be viewed in Fig. S4.

### 6.3. DC activation assay

Monocytes were differentiated into immature dendritic cells (iDCs) by culturing in CellGenix® GMP DC serum-free medium (CellGenix GmbH, Freiburg, Germany) supplemented with PenStrep (100 UI/mL), GM-CSF and IL-4 (40 ng/mL) for 5 days at 37 °C, 5 % CO<sub>2</sub> in Nunc™ EasYFlask™ 75 cm<sup>2</sup> (Thermo Fisher Scientific, Roskilde, Denmark). iDCs were transferred to a 96-well plate (Nunclon™ Delta surface, Thermo Fisher Scientific, Roskilde, Denmark) at 1.5x10<sup>5</sup> cells/well. The cells were either left in media (unstressed) or stimulated with 300 nM Keyhole Limpet Hemocyanin (KLH, #SRP6195, Sigma-Aldrich, MO, USA), 1 µg/mL Lipopolysaccharide (LPS, #L2880, Sigma-Aldrich, MO, USA) or 100 µg/mL test compound (sample overview in Table 1) for 24 h at 37 °C, 5 % CO<sub>2</sub>.

### 6.4. mDC:T-cell co-culture

iDCs were transferred to a 12-well cell culture plate (Corning Inc., ME, USA) at 0.6x10<sup>6</sup> cells/well and were either left untreated or stimulated with 300 nM Keyhole Limpet Hemocyanin (KLH) or 100 µg/mL test compound (sample overview in Table 1). After 4 h incubation at 37 °C, 5 % CO<sub>2</sub>, a maturation cocktail containing TNF-α and IL-1β (10 ng/mL) were added to the wells and incubation continued for another 40–42 h. CD4<sup>+</sup> T-cells were quickly thawed in warm (37 °C) optimizer medium (OpTmizer™ CTS™ with T-cell expansion supplement, L-glutamine and PenStrep) and added to the mature DCs (mDCs) in a 1:10 ratio (6x10<sup>6</sup> cells/well). The mDC:T-cell co-culture was incubated for 6 days at 37 °C, 5 % CO<sub>2</sub>.

### 6.5. T-cell restimulation assay

A fluorospot 96-well plate from a Human IFN-γ/IL-2 Fluorospot<sup>PLUS</sup> kit (Mabtech AB, Sweden) was washed x3 with PBS and then blocked with optimizer media-10 % FCS according to manufacturer description at room temperature until use. Monocytes were quickly thawed in warm (37 °C) DC media and 2x10<sup>4</sup> cells/well were transferred to a fluorospot plate for cytokine secretion analysis and to a 96-well plate (Nunclon™ Delta surface, Thermo Fisher Scientific, Roskilde, Denmark) for

proliferation analysis. The monocytes were stimulated with either media (untreated), 300 nM Keyhole Limpet Hemocyanin (KLH) or 100 µg/mL test compound (sample overview in Table 1) for 4 h at 37 °C, 5 % CO<sub>2</sub>. Then, mDC:T-cell co-culture cells were added at 2x10<sup>5</sup> cells/well. Additionally, anti-CD28 (#340975, BD Biosciences, CA, USA) 1 µL/well (0.1 µM) was added to the fluorospot plate and to the plate for proliferation analysis, 1 µM Click-iT® EdU (#C10418, Invitrogen, Life Technologies Corporation, OR, USA) was added. Incubation were continued for another 40–42 h at 37 °C, 5 % CO<sub>2</sub>.

### 6.6. Fluorospot analysis

Two days after re-stimulation, the fluorospot plate was washed x5 with DPBS, followed by incubation with anti-IFN-γ (7-B6-1-BAM) detection antibody in DPBS-0.1 % BSA for 2 h. The plate was washed and incubated with anti-BAM-490 fluorophore-conjugate in DPBS-0.1 % BSA for 1 h, while protected from light. Lastly, the plate was washed and spots were developed using fluorescence enhancer for 15 min. Dried plates were analysed with an Immunospot S6 Universal Analyzer (Cellular Technology Limited, OH, USA) using the build-in software.

### 6.7. Cytokine measurements

Plates from the DC activation assay were centrifuged at 1200 rpm, 4 °C for 2 min. The supernatant (100 µL/well) was transferred to a U-bottom well plate (#650201, Greiner Bio-One, USA) and stored at -80 °C until use. Multiplex analysis of cytokines (IL-1β, IL-6, IL-8 and TNF-α) on the supernatants was performed using a 10-spot MSD U-PLEX platform, biomarker group 1 human 4-assays (Meso Scale Discovery, MD, USA) according to the manufacturer instructions. In brief, U-plex linkers were mixed with their corresponding biotinylated antibodies in separate tubes and left for 30 min incubation. Stop solution was added, the tubes were vortexed and left for another 30 min incubation. The U-plex linker-coupled antibody solutions were mixed, transferred to the MSD plate and incubated for 1 h with shaking. The MSD plate was washed x3 with DPBS-0.05 % Tween 20, followed by sample addition (DC supernatants) and incubation for 1 h with shaking. Plate was washed x3 with DPBS-0.05 % Tween 20 and a Sulfo-tag™ conjugated detection antibody solution, containing detection antibodies corresponding to each analyte, was added to the wells. The solution was left for 1 h incubation with shaking and washed x3 with DPBS-0.05 % Tween 20. Lastly, read buffer was added and the plate was analysed on a MSD instrument (Meso Scale Discovery, MD, USA) by using the MSD Discovery Workbench software. Analyte concentration (pg/ml) was extrapolated from luminescence, based on a standard curve generated from multi-analyte calibrator standards. Data values that exceeded the limit-of-detection (lower- or upper-LOD) of the standard curve, was replaced with the calculated LOD for each analyte.

### 6.8. Flow cytometry

DC surface marker expression from the DC activation assay was assessed by multicolour flow cytometry using a panel of mouse anti-human monoclonal antibodies: FITC conjugated anti-CD80, APC conjugated anti-CD83, PE conjugated anti-CD86, V450 conjugated anti-CD40 (all from BD Biosciences, CA, USA) and APC-Cy7 conjugated LIVE/DEAD™ Fixable Near-IR Dead Cell Stain (#L10119, Invitrogen, Thermo Fischer Scientific, OR, USA). Negative controls were isotype matched control antibodies. Cells were transferred to a U-bottom well plate (#650201, Greiner Bio-One, USA), washed twice with DPBS-1 % FCS and once with DPBS-10 % FCS. To prevent unspecific antibody binding, the cells were first incubated for 10 min with human Fc block (#564220, BD Biosciences, CA, USA) in DPBS-10 % FCS. The cells were stained with the antibody panel for 20 min and washed x3 with DPBS-1 % FCS prior to flow cytometry analysis. For T-cell proliferation analysis, the cells were first extracellularly stained with a mouse anti-human

monoclonal antibody APC-Cy7 conjugated LIVE/DEAD™ Fixable Near-IR Dead Cell Stain (#L10119, Invitrogen, Thermo Fischer Scientific, OR, USA), following a similar preparation procedure as just described for the DCs. Hereafter, the cells were click labelled intracellularly using the Click-iT® Edu flow cytometry assay kit (#C10418, Invitrogen, Life Technologies Corporation, OR, USA) according to manufacturer instructions. Briefly, the cells were fixed and permeabilized by incubation for 15 min with Click-iT® fixative. The plate was washed twice in Click-iT® wash reagent and Click-iT® reaction cocktail (Pacific Blue™ azide, CuSO<sub>4</sub> and reaction buffer additive) were added to each well, followed by 30 min incubation. Lastly, the cells were washed in wash reagent before flow cytometry analysis. For compensation, the individual antibodies used for staining were mixed with one drop of negative control beads and anti-mouse IgG beads (BD Biosciences, CA, USA). For the dead cell stain, compensation was performed on negative control beads and anti-Rat/Hamster IgG beads (#552845, BD Biosciences, CA, USA). All flow cytometry assays were performed on a LSR FACSFortessa instrument (BD Biosciences, CA, USA), while Kaluza software (v.2.1) were used for data analysis.

### 6.9. Statistical analysis

Results from all four assays were plotted as ‘stimulation index’ (SI) vs stimulation condition. The SI is calculated as:  $\text{Response}_{\text{condition}} / \text{Response}_{\text{untreated cells}}$ . The significance level ( $p < 0.05$ ) was determined by a one-tailed *t*-test, assuming normality and unequal variance. To plot % Responding Donors vs Magnitude of Response, a positive response was defined at single donor level in each assay. For DC surface marker data, a positive response was obtained if the SI was significantly up-regulated and  $p < 0.05$  in a one-tailed *t*-test for either one of the markers (CD80, CD83 or CD86). For multiplex cytokine data, a positive response was obtained if  $\text{SI} > 2$  for all four cytokines. For fluorospot and proliferation analysis, a response was defined as positive if  $\text{SI} > 2$  and  $p < 0.05$  by a one-tailed *t*-test. For all assays, KLH and LPS (if present) response were compared to untreated cells, whereas aggregates were compared to cells stimulated with unstressed insulin (Ins sample). The Magnitude of Response in all assays were calculated as the average SI for responding donors.

### 6.10. In vivo immunogenicity

#### 6.10.1. Animal husbandry

The care and use of mice in these studies were conducted according to national regulations in Denmark and with experimental licenses granted by the Danish Ministry of Justice. The mice were housed under 12:12 light–dark cycle in humidity- and temperature controlled rooms with free access to standard chow (catalogue 1324, Altromin, Brogaarden, Denmark) and water throughout both the acclimation (12 days) and study period (37 days).

#### 6.10.2. Animal study

A total number of 55 BALB/c mice (BALB/cAnNCrl, 7 weeks of age) purchased from Charles River Laboratories (Sulzfeld, Germany) were divided into 5 groups; A control group treated with unstressed human insulin ( $N = 15$ ) and 4 groups treated with one of the different aggregate types ( $N = 10/\text{group}$ ). The mice were injected SC twice weekly with 80 nmol/kg test compound at dose 5 mL/kg for 4 consecutive weeks using Injekt-F Luer Duo silicone- and latex-free syringes and 25Gx5/8" needles (#9166033 V, B. Braun, Melsungen, Germany). The Ins sample was prepared weekly, whereas aggregate samples were prepared every 2 weeks. Samples were stored at 5 °C in 5 mL vials (#60.558.001, 57x15,3mm, Sarstedt AG & Co., Nümbrecht, Germany), but were equilibrated to room temperature before injections. The study design was inspired by a similar previously published study (Kijanka et al., 2018). Three days before the first injection (day –3), 200 µL blood was collected sublingual to obtain pre-dose samples for cut-point calculation

of the basal ADA level. Midway through injections (day 12), another 200 µL blood was collected sublingual. The mice were sacrificed one week after the last injection (day 37). Here 500 µL blood was collected sublingual. To isolate plasma for ADA analysis, blood was sampled directly in tubes containing EDTA and put into ice water before centrifugation for 5 min, 6000 × g at room temperature. The stabilized plasma was kept in 0.7 mL Micronic tubes (Micronic, Lelystad, Netherlands) at –20 °C until use.

#### 6.10.3. Anti-insulin antibody detection

The anti-drug antibody (ADA) responses were evaluated with Radioimmunoassay (RIA) adapted to detect anti-human insulin antibodies in mouse plasma. First, plasma samples were mixed with human insulin (rh-HI) tracer [ $\text{Tyr}^{\text{A14}}(^{125}\text{I})$ ] and assay buffer (0.04 M phosphate, 0.15 M NaCl, 0.5 % w/v BSA, 0.25 %  $\gamma$ -globulin, 0.01 M EDTA, pH 7.4) into Nunc mini Sorp tubes (Nunc A/S, Roskilde, Denmark) in duplicates. The mixture was vortexed for 10 s, followed by 24 h incubation at 5 °C to allow anti-insulin antibodies in the plasma to bind the rh-HI tracer. Second, 14.4 % (w/v) PEG-6000 (#807491, Merck) in TBS buffer (0.01 M Trizma base, 0.15 M NaCl, 0.1 % Tween 20, pH 8.6) was added to each tube to precipitate antibodies in the sample. The tubes were vortexed for 10–20 s and then centrifuged 30 min, 3000 rpm at 4 °C. The supernatant was discarded, and the precipitate was washed once with PEG-6000 in TBS followed by centrifugation for 15 min, 3000 rpm at 4 °C. Lastly, the supernatant was discarded before being placed into the gamma counter (Wizard2, 10 detector, PerkinElmer). Each tube was counted for 120 s. The measured cpm (count-per-minute) is proportional to the amount of bound anti-insulin antibodies bound to the rh-HI tracer in the sample. Counts were normalized to tubes with unprecipitated rh-HI tracer, called “total”. The results are given as  $\text{bound}(\text{cpm}) / \text{total}(\text{cpm}) * 100$  (% B/T). A response was classified as positive if the %B/T value was equal or higher than the cut-point, defined as the upper 99.7th percentile (3 SD) of the calculated %B/T for samples collected at day –3.

### 6.11. Statistical analysis

To statistically evaluate the potential differences in anti-insulin antibody response between unstressed human insulin and the aggregates, a One-Way ANOVA with Dunnett T3 ( $n < 50/\text{group}$ ) multiple comparisons test assuming non-equal variance were applied to the data using GraphPad Prism software (v. 9.0.1). The results showed that only Sph $\beta$  ( $p = 0.0019$ ) and ParL ( $p < 0.0001$ ) were significantly different from Ins. Looking at the statistical differences between the different aggregates we assumed equal variance as the scattering is not statistically different for the aggregates. Here a one-tailed *t*-test was used to distinguish any relative difference between the aggregates and found that Sph $\beta$  and ParL were significantly different from Sph $\alpha$ ,  $p = 0.0307$  and  $p = 0.0146$ , respectively. Yet, they were not statistically different from ParS or each other. Ultimately, this led us to the stated ranking that Sph $\beta$  and ParL were most immunogenic (equally), showed by ANOVA and *t*-tests, and Sph $\alpha$  were least immunogenic, showed by *t*-tests.

#### CRediT authorship contribution statement

**Camilla Thorklaksen:** Conceptualization, Formal analysis, Investigation, Methodology, Visualization, Validation, Writing – original draft. **Heidi S. Schultz:** Conceptualization, Formal analysis, Investigation, Methodology, Visualization, Validation, Writing – original draft. **Simon K. Gammelgaard:** Formal analysis, Investigation, Validation, Writing – review & editing. **Wim Jiskoot:** Writing – review & editing. **Nikos S. Hatzakis:** Writing – review & editing. **Flemming S. Nielsen:** Formal analysis, Investigation, Writing – review & editing. **Helene Solberg:** Formal analysis, Investigation, Validation, Writing – review & editing. **Vito Fodera:** Conceptualization, Funding acquisition, Supervision, Methodology, Project administration, Resources, Writing – review & editing. **Christina Bartholdy:** Conceptualization, Supervision,

Methodology, Project administration, Writing – review & editing. **Minna Groenning:** Conceptualization, Funding acquisition, Supervision, Methodology, Project administration, Resources, Writing – review & editing.

### Declaration of Competing Interest

The authors declare the following financial interests/personal relationships which may be considered as potential competing interests: Vito Foderà reports financial support was provided by Novo Nordisk A/S.

### Data availability

Data will be made available on request.

### Acknowledgements

Authors acknowledge Novo Nordisk A/S for project funding and providing material for formation of protein aggregates, human cell studies and animal studies. VF and CT acknowledge VILLUM FONDEN for supporting the project via the Villum Young Investigator Grant “Protein Superstructures as Smart Biomaterials (ProSmart)” 2018 – 2023 (Grant 19175). NSH and CT acknowledge VILLUM FONDEN (Grant 18333) and NSH acknowledge Novo Nordisk foundation grants NNF16OC0021948 and NNF14CC0001. For use of SEM, authors acknowledge the Core Facility for Integrated Microscopy, Faculty of Health and Medical Sciences, University of Copenhagen.

### Appendix A. Supplementary data

Supplementary data to this article can be found online at <https://doi.org/10.1016/j.ijpharm.2022.122490>.

### References

- Ahmadi, M., Bryson, C.J., Cloake, E.A., Welch, K., Filipe, V., Romeijn, S., Hawe, A., Jiskoot, W., Baker, M.P., Fogg, M.H., 2015. Small amounts of sub-visible aggregates enhance the immunogenic potential of monoclonal antibody therapeutics. *Pharm. Res.* 32, 1383–1394.
- Barnard, J.G., Babcock, K., Carpenter, J.F., 2013. Characterization and quantitation of aggregates and particles in interferon-beta products: potential links between product quality attributes and immunogenicity. *J. Pharm. Sci.* 102, 915–928.
- Bee, J.S., Goletz, T.J., Ragheb, J.A., 2012. The future of protein particle characterization and understanding its potential to diminish the immunogenicity of biopharmaceuticals: a shared perspective. *J. Pharm. Sci.* 101, 3580–3585.
- Benne, N., van Duijn, J., Kuiper, J., Jiskoot, W., Slutter, B., 2016. Orchestrating immune responses: How size, shape and rigidity affect the immunogenicity of particulate vaccines. *J. Control. Release* 234, 124–134.
- Boll, B., Bessa, J., Folzer, E., Rios Quiroz, A., Schmidt, R., Bulau, P., Finkler, C., Mahler, H.C., Huwyler, J., Iglesias, A., et al., 2017. Extensive chemical modifications in the primary protein structure of igg1 subvisible particles are necessary for breaking immune tolerance. *Mol. Pharm.* 14, 1292–1299.
- Brewer, J.M., Pollock, K.G., Tetley, L., Russell, D.G., 2004. Vesicle size influences the trafficking, processing, and presentation of antigens in lipid vesicles. *J. Immunol.* 173, 6143–6150.
- Christensen, D., Henriksen-Lacey, M., Kamath, A.T., Lindenstrom, T., Korsholm, K.S., Christensen, J.P., Rochat, A.F., Lambert, P.H., Andersen, P., Siegrist, C.A., et al., 2012. A cationic vaccine adjuvant based on a saturated quaternary ammonium lipid have different in vivo distribution kinetics and display a distinct CD4 T cell-inducing capacity compared to its unsaturated analog. *J. Control. Release* 160, 468–476.
- Darrington, R.T., Anderson, B.D., 1995. Evidence for a common intermediate in insulin deamidation and covalent dimer formation: effects of pH and aniline trapping in dilute acidic solutions. *J. Pharm. Sci.* 84, 275–282.
- De Luca, G., Fennema Galparsoro, D., Sancataldo, G., Leone, M., Foderà, V., Vetri, V., 2020. Probing ensemble polymorphism and single aggregate structural heterogeneity in insulin amyloid self-assembly. *J. Coll Int Sci* 574, 229–240.
- Dingman, R., Balu-Iyer, S.V., 2019. Immunogenicity of protein pharmaceuticals. *J. Pharm. Sci.* 108, 1637–1654.
- Duke, B.R., Mitra-Kaushik, S., 2020. Current In vitro assays for prediction of t cell mediated immunogenicity of biotherapeutics and manufacturing impurities. *J. Pharm. Innov.* 15, 202–218.
- Erich, H., Valdes, A.M., Noble, J., Carlson, J.A., Varney, M., Concannon, P., Mychaleckyj, J.C., Todd, J.A., Bonella, P., Fear, A.L., et al., 2008. HLA DR-DQ haplotypes and genotypes and type 1 diabetes risk: analysis of the type 1 diabetes genetics consortium families. *Diabetes* 57, 1084–1092.
- Filipe, V., Jiskoot, W., Basmeleh, A.H., Halim, A., Schellekens, H., Brinks, V., 2012. Immunogenicity of different stressed IgG monoclonal antibody formulations in immune tolerant transgenic mice. *MAbs* 4, 740–752.
- Florence, T.M., 1980. Degradation of protein disulphide bonds in dilute alkali. *Biochem. J* 189, 507–520.
- Foderà, V., Vetri, V., Wind, T.S., Noppe, W., Cornett, C., Donald, A.M., Morozova-Roche, L.A., Vestergaard, B., 2014. Observation of the early structural changes leading to the formation of protein superstructures. *J. Phys. Chem. Lett.* 5, 3254–3258.
- Freitag, A.J., Shomali, M., Michalakis, S., Biel, M., Siedler, M., Kaymakcalan, Z., Carpenter, J.F., Randolph, T.W., Winter, G., Engert, J., 2015. Investigation of the immunogenicity of different types of aggregates of a murine monoclonal antibody in mice. *Pharm. Res.* 32, 430–444.
- Gerhardt, A., McGraw, N.R., Schwartz, D.K., Bee, J.S., Carpenter, J.F., Randolph, T.W., 2014. Protein aggregation and particle formation in prefilled glass syringes. *J. Pharm. Sci.* 103, 1601–1612.
- Gu, S., Wen, D., Weinreb, P.H., Sun, Y., Zhang, L., Foley, S.F., Kshirsagar, R., Evans, D., Mi, S., Meier, W., et al., 2010. Characterization of trisulfide modification in antibodies. *Anal. Biochem.* 400, 89–98.
- Hemmendorff, B., Castan, A., Persson, A., 2007. Method for the Production of Recombinant Peptides With a Low Amount of Trisulfides.
- Her, C., Carpenter, J.F., 2020. Effects of tubing type, formulation, and postpumping agitation on nanoparticle and microparticle formation in intravenous immunoglobulin solutions processed with a peristaltic filling pump. *J. Pharm. Sci.* 109, 739–749.
- Hermeling, S., Crommelin, D.J., Schellekens, H., Jiskoot, W., 2004. Structure-immunogenicity relationships of therapeutic proteins. *Pharm. Res.* 21, 897–903.
- Hermeling, S., Schellekens, H., Maas, C., Gebbink, M.F., Crommelin, D.J., Jiskoot, W., 2006. Antibody response to aggregated human interferon alpha2b in wild-type and transgenic immune tolerant mice depends on type and level of aggregation. *J. Pharm. Sci.* 95, 1084–1096.
- Hjorth, C.F., Hubálek, F., Andersson, J., Poulsen, C., Otzen, D., Naver, H., 2015. Purification and identification of high molecular weight products formed during storage of neutral formulation of human insulin. *Pharm. Res.* 32, 2072–2085.
- Jiskoot, W., Kijanka, G., Randolph, T.W., Carpenter, J.F., Koulov, A.V., Mahler, H.C., Joubert, M.K., Jawa, V., Narhi, L.O., 2016. Mouse models for assessing protein immunogenicity: lessons and challenges. *J. Pharm. Sci.* 105, 1567–1575.
- Joubert, M.K., Luo, Q., Nashed-Samuel, Y., Wypych, J., Narhi, L.O., 2011. Classification and characterization of therapeutic antibody aggregates. *J. Biol. Chem.* 286, 25118–25133.
- Joubert, M.K., Hokom, M., Eakin, C., Zhou, L., Deshpande, M., Baker, M.P., Goletz, T.J., Kerwin, B.A., Chirmule, N., Narhi, L.O., et al., 2012. Highly aggregated antibody therapeutics can enhance the in vitro innate and late-stage T-cell immune responses. *J. Biol. Chem.* 287, 25266–25279.
- Joubert, M.K., Deshpande, M., Yang, J., Reynolds, H., Bryson, C., Fogg, M., Baker, M.P., Herskovitz, J., Goletz, T.J., Zhou, L., et al., 2016. Use of in vitro assays to assess immunogenicity risk of antibody-based biotherapeutics. *PLoS One* 11, e0159328.
- Kijanka, G., Bee, J.S., Korman, S.A., Wu, Y., Roskos, L.K., Schenerman, M.A., Slutter, B., Jiskoot, W., 2018. Submicron size particles of a murine monoclonal antibody are more immunogenic than soluble oligomers or micron size particles upon subcutaneous administration in mice. *J. Pharm. Sci.* 107, 2847–2859.
- Kotarek, J., Stuart, C., De Paoli, S.H., Simak, J., Lin, T.L., Gao, Y., Ovanesov, M., Liang, Y., Scott, D., Brown, J., et al., 2016. Subvisible particle content, formulation, and dose of an erythropoietin peptide mimetic product are associated with severe adverse postmarketing events. *J. Pharm. Sci.* 105, 1023–1027.
- Krebs, M.R., Macphée, C.E., Miller, A.F., Dunlop, I.E., Dobson, C.M., Donald, A.M., 2004. The formation of spherulites by amyloid fibrils of bovine insulin. *PNAS* 101, 14420–14424.
- Krebs, M.R., Devlin, G.L., Donald, A.M., 2007. Protein particulates: another generic form of protein aggregation? *Biophys. J.* 92, 1336–1342.
- Mahler, H.-C., Friess, W., Grauschopf, U., Kiese, S., 2009. Protein aggregation: pathways, induction factors and analysis. *J. Pharm. Sci.* 98, 2909–2934.
- Morgan, H., Tseng, S.Y., Gallais, Y., Leineweber, M., Buchmann, P., Riccardi, S., Nabhan, M., Lo, J., Gani, Z., Szely, N., et al., 2019. Evaluation of in vitro Assays to assess the modulation of dendritic cells functions by therapeutic antibodies and aggregates. *Front. Immunol.* 10, 601.
- Moussa, E.M., Kotarek, J., Blum, J.S., Marszal, E., Topp, E.M., 2016a. Physical characterization and innate immunogenicity of aggregated intravenous immunoglobulin (igv) in an in vitro cell-based model. *Pharm. Res.* 33, 1736–1751.
- Moussa, E.M., Panchal, J.P., Moorthy, B.S., Blum, J.S., Joubert, M.K., Narhi, L.O., Topp, E.M., 2016b. Immunogenicity of therapeutic protein aggregates. *J. Pharm. Sci.* 105, 417–430.
- Nagy, P., 2013. Kinetics and mechanisms of thiol-disulfide exchange covering direct substitution and thiol oxidation-mediated pathways. *Antioxid. Redox Signal.* 18, 1623–1641.
- Nielsen, M., Lundegaard, C., Blicher, T., Peters, B., Sette, A., Justesen, S., Buus, S., Lund, O., 2008. Quantitative predictions of peptide binding to any hla-dr molecule of known sequence: netMHCIIpan. *PLoS Comput. Biol.* 4, e1000107.
- Randolph, T.W., Schiltz, E., Sederstrom, D., Steinmann, D., Mozziconacci, O., Schoneich, C., Freund, E., Ricci, M.S., Carpenter, J.F., Lengsfeld, C.S., 2015. Do not drop: mechanical shock in vials causes cavitation, protein aggregation, and particle formation. *J. Pharm. Sci.* 104, 602–611.
- Ratanji, K.D., Derrick, J.P., Dearman, R.J., Kimber, I., 2014. Immunogenicity of therapeutic proteins: influence of aggregation. *J. Immunotoxicol.* 11, 99–109.

- Rosenberg, A.S., 2006. Effects of protein aggregates: an immunologic perspective. *AAPS J.* 8, 501–507.
- Rosenberg, A.S., Sauna, Z.E., 2018. Immunogenicity assessment during the development of protein therapeutics. *J. Pharm. Pharmacol.* 70, 584–594.
- Sauerborn, M., Brinks, V., Jiskoot, W., Schellekens, H., 2010. Immunological mechanism underlying the immune response to recombinant human protein therapeutics. *Trends Pharmacol. Sci.* 31, 53–59.
- Schack, M.M., Moller, E.H., Friderichsen, A.V., Carpenter, J.F., Rades, T., Groenning, M., 2019. Optimization of infrared microscopy to assess secondary structure of insulin molecules within individual subvisible particles in aqueous formulations. *J. Pharm. Sci.* 108, 1117–1129.
- Schellekens, H., 2005. Factors influencing the immunogenicity of therapeutic proteins. *Nephrol. Dial. Transplant.* 20, 3–9.
- Schultz, H.S., Reedtz-Runge, S.L., Backstrom, B.T., Lamberth, K., Pedersen, C.R., Kvarnhammar, A.M., 2017. Consortium A, Quantitative analysis of the CD4+ T cell response to therapeutic antibodies in healthy donors using a novel T cell:PBMC assay. *PLoS One* 12, e0178544.
- Seidl, A., Hainzl, O., Richter, M., Fischer, R., Bohm, S., Deutel, B., Hartinger, M., Windisch, J., Casadevall, N., London, G.M., et al., 2012. Tungsten-induced denaturation and aggregation of epoetin alfa during primary packaging as a cause of immunogenicity. *Pharm. Res.* 29, 1454–1467.
- Telikepalli, S., Shinogle, H.E., Thapa, P.S., Kim, J.H., Deshpande, M., Jawa, V., Middaugh, C.R., Narhi, L.O., Joubert, M.K., Volkin, D.B., 2015. Physical characterization and in vitro biological impact of highly aggregated antibodies separated into size-enriched populations by fluorescence-activated cell sorting. *J. Pharm. Sci.* 104, 1575–1591.
- Thorlaksen, C., Stanciu, A.-M., Neergaard, M.B., Hatzakis, N.S., Foderà, V., Groenning, M., 2022a. Morphological integrity of insulin amyloid-like aggregates depends on preparation methods and post-production treatments. *Eur. J. Pharm. Biopharm.* 179, 147–155.
- Thorlaksen, C., Stanciu, A.-M., Neergaard, M.B., Jiskoot, W., Groenning, M., Foderà, V., 2022b. Subtle pH variation close to pI affects aggregation pathway, formation kinetics and characteristics of recombinant human insulin. *Eur. J. Pharm. Biopharm.* 179, 166–172.
- Thorlaksen, C., Neergaard, M.S., Groenning, M., Foderà, V., 2023. Reproducible formation of insulin Superstructures: Amyloid-like Fibrils, Spherulites and Particulates. In: *Protein Aggregation: Methods and Protocols*, SpringerNature: Methods Mol. Biol, vol 2551. Humana, New York, NY, pp. 297–309.
- Trivedi, M.V., Laurence, J.S., Siahaan, T.J., 2009. The role of thiols and disulfides on protein stability. *Curr. Protein Pept. Sci.* 10, 614–625.
- Ueda, T., Nakamura, K., Abe, Y., Carpenter, J.F., 2019. Effects of Product Handling Parameters on Particle Levels in a Commercial Factor VIII Product: Impacts and Mitigation. *J. Pharm. Sci.* 108, 775–786.
- Van Autreve, J.E., Weets, I., Gulbis, B., Vertongen, F., Gorus, F.K., Van der Auwera, B.J., 2004. The rare HLA-DQA1\*03-DQB1\*02 haplotype confers susceptibility to type 1 diabetes in whites and is preferentially associated with early clinical disease onset in male subjects. *Hum. Immunol.* 65, 729–736.
- van Beers, M.M., Sauerborn, M., Gilli, F., Brinks, V., Schellekens, H., Jiskoot, W., 2011. Oxidized and aggregated recombinant human interferon beta is immunogenic in human interferon beta transgenic mice. *Pharm. Res.* 28, 2393–2402.
- Walchli, R., Vermeire, P.J., Massant, J., Arosio, P., 2020. Accelerated Aggregation Studies of Monoclonal Antibodies: Considerations for Storage Stability. *J. Pharm. Sci.* 109, 595–602.
- Wang, Z., Rejtar, T., Zhou, Z.S., Karger, B.L., 2010. Desulfurization of cysteine-containing peptides resulting from sample preparation for protein characterization by mass spectrometry. *Rapid Commun. Mass Spectrom.* 24, 267–275.
- Wang, W., Singh, S.K., Li, N., Toler, M.R., King, K.R., Nema, S., 2012. Immunogenicity of protein aggregates—concerns and realities. *Int. J. Pharm.* 431, 1–11.
- Williams, A.J., Bingley, P.J., Bonifacio, E., Palmer, J.P., Gale, E.A., 1997. A novel micro-assay for insulin autoantibodies. *J. Autoimmun.* 10, 473–478.