



Universiteit
Leiden
The Netherlands

Exploiting anisotropic particle shape to electrostatically assemble colloidal molecules with high yield and purity

Shelke, Y.P.; Marín-Aguilar, S.; Camerin, F.; Dijkstra, M.; Kraft, D.J.

Citation

Shelke, Y. P., Marín-Aguilar, S., Camerin, F., Dijkstra, M., & Kraft, D. J. (2023). Exploiting anisotropic particle shape to electrostatically assemble colloidal molecules with high yield and purity. *Journal Of Colloid And Interface Science*, 629(part A), 322-333.
doi:10.1016/j.jcis.2022.08.158

Version: Publisher's Version

License: [Creative Commons CC BY 4.0 license](https://creativecommons.org/licenses/by/4.0/)

Downloaded from: <https://hdl.handle.net/1887/3562962>

Note: To cite this publication please use the final published version (if applicable).



Contents lists available at ScienceDirect

Journal of Colloid and Interface Science

journal homepage: www.elsevier.com/locate/jcis

Exploiting anisotropic particle shape to electrostatically assemble colloidal molecules with high yield and purity

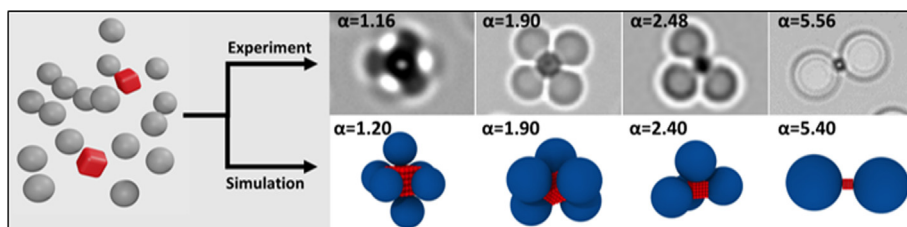


Yogesh Shelke^a, Susana Marín-Aguilar^b, Fabrizio Camerin^b, Marjolein Dijkstra^b, Daniela J. Kraft^{a,*}

^aSoft Matter Physics, Huygens-Kamerlingh Onnes Laboratory, Leiden University, PO Box 9504, 2300 RA Leiden, the Netherlands

^bSoft Condensed Matter, Debye Institute for Nanomaterials Science, Utrecht University, Princetonplein 1, 3584 CC Utrecht, the Netherlands

GRAPHICAL ABSTRACT



ARTICLE INFO

Article history:

Received 22 June 2022

Revised 22 August 2022

Accepted 25 August 2022

Available online 29 August 2022

Keywords:

Templated self-assembly

Colloidal clusters

Anisotropic shape

Monte Carlo simulations

Parking algorithm

ABSTRACT

Hypothesis: Colloidal molecules with anisotropic shapes and interactions are powerful model systems for deciphering the behavior of real molecules and building units for creating materials with designed properties. While many strategies for their assembly have been developed, they typically yield a broad distribution or are limited to a specific type. We hypothesize that the shape and relative sizes of colloidal particles can be exploited to efficiently direct their assembly into colloidal molecules of desired valence.

Experiments: We exploit electrostatic self-assembly of negatively charged spheres made from either polystyrene or silica onto positively charged hematite cubes. We thoroughly analyze the role of the shape and size ratio of particles on the cluster size and yield of colloidal molecules.

Findings: Using a combination of experiments and simulations, we demonstrate that cubic particle shape is crucial to generate high yields of distinct colloidal molecules over a wide variety of size ratios. We find that electrostatic repulsion between the satellite spheres is important to leverage the templating effect of the cubes, leading the spheres to preferentially assemble on the facets rather than the edges and corners of the cube. The sixfold symmetry of cubes favors the assembly of molecules with six, four, and two satellite spheres at appropriate size ratios and interaction strength.

Furthermore, we reveal that our protocol is not affected by the specific choice of the material of the colloidal particles. Finally, we show that the permanent magnetic dipole moment of the hematite cubes can be utilized to separate colloidal molecules from non-assembled satellite particles. Our simple and effective strategy might be extended to other templating particle shapes, thereby greatly expanding the library of colloidal molecules that can be achieved with high yield and purity.

© 2022 The Authors. Published by Elsevier Inc. This is an open access article under the CC BY license (<http://creativecommons.org/licenses/by/4.0/>).

1. Introduction

Colloidal molecules are clusters of colloidal particles with features that resemble those of real molecules. Their anisotropy in terms of shape and interactions is strikingly similar to that of their

* Corresponding author.

E-mail address: kraft@physics.leidenuniv.nl (D.J. Kraft).

molecular analogues. This makes them powerful model systems for unraveling the behavior of real molecules, [1,2] for designing building units to create structures with desired properties, [3,4] and for serving as a versatile basis for creating active particles with a more complex motion behavior than has been observed for simple spheres. [5–8]

Various methods for the production of colloidal molecules with different shapes, sizes, and functionalities have been developed in the past years, employing for example synthetic strategies such as nucleation and growth, [9] seeded emulsion polymerization, [10] physical vapor deposition, [11] emulsion-based clustering, [12,13] colloidal fusion, [14] and self-assembly approaches. [15,16] While bottom-up synthetic routes have the advantage of producing large quantities of uniform colloidal molecules, the obtained shape and interaction complexity is often limited. In contrast, self-assembly strategies typically provide access to more complex particle shapes and interactions. Assembly can be driven by a manifold of approaches ranging from the hybridization of surface-bound [17] or surface-mobile DNA linkers, [18] hydrophobic [19] and depletion interactions, [20] to the assembly driven by opposite charges. [21–25] On the other hand, they also require strategies to limit the assembly to finite-sized clusters with a pre-determined valence, [26–29] a mechanism to achieve a uniform arrangement of the constituent particles in the clusters, and separation of the resultant colloidal molecules by their size or type.

A straightforward self-assembly approach for producing colloidal molecules from binary mixtures of colloidal spheres is hetero-aggregation through electrostatic interactions. [17,30,23,22,24] In this procedure, two particle species with opposite surface charge are selected and mixed such that they aggregate in solution. This aggregation process can be considered irreversible, meaning that when the particles are linked they fluctuate at most near their contact position. To limit the growth of the resulting structures, core particles of type A are typically used in the presence of an excess of satellite particles of type B. Upon assembly, the excess type B colloids saturate the surface of the less frequent type A particles, thereby halting the electrostatically driven aggregation and yielding finite-sized clusters. These so-called colloidal molecules can be characterized by the coordination number N of B-type particles that are attached on a single A-type particle as AB_N complexes.

For spheres, the number of attached particles N , and thus the size and shape of the resulting colloidal molecule, depends largely on their size ratio of the two types of spheres. [31,21,32] While the geometry in principle sets the maximum cluster size, [31] in experiments typically a wider range of cluster types is obtained. The reason for this is that the assembly is a random sequential aggregation process and immobility of the outer particles after adhesion to the core particle prevents optimization of space and hence reaching the maximum number of outer particles bound to the core. [33,30] As a result, the yield for a specific valence is typically low, except for AB_4 clusters assembled at a critical size ratio $\alpha_c = 2.41$ and AB_2 clusters for $\alpha \geq 6.46$. [30] In contrast, if polyhedral metal–organic framework particles were used as the center of the cluster, it was found that their geometry in principle sets the cluster size. [24] For sufficiently high number ratios, the polyhedral shape allows for adsorption of one sphere per facet if the adsorbing spheres are neither too large nor too small. However, how the size ratio is connected to the successful assembly of highly coordinated clusters and thus whether this strategy is robust to polydispersity was not investigated. In addition, other electrostatic effects such as repulsion between the outer particles might influence the outcome.

For hetero-coagulation of oppositely charged spheres, it is known that electrostatic interactions can play a role in determining the cluster size. Depending on the screening length of the sol-

vent and the charges of both particles, clusters may have a higher or lower coordination number. [22] Self-assembly again occurs via random sequential aggregation with particle immobility after adhesion, implying that no optimization of the sphere configuration is possible after adhesion and hence that the yield of a given type of colloidal molecule is limited as well. Although strategies using density gradient centrifugation [34] and fluorescence-activated cell sorting instruments [35] are available, selective separation of a single colloidal molecule type is often time-consuming and challenging.

Using a combination of experiments and simulations, we here demonstrate that a non-spherical particle shape, a cube, can significantly enhance the formation of colloidal molecules of a specific type for a wide range of size ratios. Specifically, using electrostatically driven hetero-coagulation of negatively charged spheres (B) and positively charged cubic core particles (A), we show that the cubic shape favors the self-assembly of colloidal molecules with AB_2 and AB_6 across a wide range of size ratios for different materials of spheres. We furthermore demonstrate that AB_4 -type colloidal molecules can be obtained by confining the assembly to quasi-2D by sedimentation, using satellite particles of a high density material. The size ratio of the particles together with the non-spherical particle shape limits the maximum number of bound particles and can be used to produce large quantities of either of these favored species over a wide range. Using numeric simulations, we find that electrostatic repulsion between the bound spheres plays a crucial role in the cluster formation, by favoring aggregation on the facet of the cubic core over adsorption to the edges and corners of the cube. Clusters assembled from hematite cubes and polystyrene spheres can be further stabilized by fusing the polystyrene satellites using Tetrahydrofuran (THF) as plasticizer. [36] Finally, we demonstrate that the permanent magnetic dipole of the employed hematite cubes can be used to straightforwardly separate colloidal molecules from the excess spheres through a magnetic field.

2. Materials and Methods

2.1. Experimental Section

2.1.1. Materials

Polystyrene spheres with $2.00 \pm 0.05 \mu\text{m}$ diameter and 5 wt/v% were purchased from Sigma-Aldrich. Polystyrene spheres with $4.55 \pm 0.05 \mu\text{m}$ diameter and 10 wt/v% were purchased from Microparticles GmbH. Polystyrene spheres of diameter $1.00 \pm 0.05 \mu\text{m}$ were synthesized by surfactant free emulsion polymerization. [37] Silica spheres of diameter $0.97 \pm 0.05 \mu\text{m}$, $2.06 \pm 0.05 \mu\text{m}$ and $4.62 \pm 0.05 \mu\text{m}$ size with 5 wt/v% were purchased from Microparticles GmbH. Sodium hydroxide (NaOH, 99.5% from Acros Organics), tetrahydrofuran (THF, 99.9% from Honeywell Research Chemicals), and Iron(III) Chloride Hexahydrate ($\text{FeCl}_3 \cdot 6\text{H}_2\text{O}$) (ACS, 97.0–102.0% from Alfa-Aesar) were used as received. Milli-Q (Millipore Gradient A10) water with resistivity $18.2 \text{ M}\Omega\text{-cm}$ was used for all experiments.

2.1.2. Synthesis of Hematite Cubes

The hematite cubes were synthesized using the procedure described by Sugimoto et al. [38] In a typical synthesis that yielded $0.83 \pm 0.03 \mu\text{m}$ hematite cubes, 100 ml 2 M $\text{FeCl}_3 \cdot 6\text{H}_2\text{O}$ was prepared in a 500 ml Pyrex bottle. Next, 100 ml of a 5 M NaOH solution was added in 20 s while stirring. Then, the mixture was kept stirring for another 10 min and subsequently placed and kept undisturbed in a preheated oven at 100°C for 8 days. After that, the resulting cubes were washed several times using centrifugation and re-dispersion in Milli-Q water. Finally, the particles were

first washed with ethanol and then with water to remove unreacted chemicals by repeated centrifugation at 5000 rpm for 10 min (Beckman Coulter, Avanti J-15R) and re-dispersion by sonication (Elma, Elmasonic P) for 15 min at 20 °C temperature and 37 MHz frequency. A similar procedure and concentration were used for synthesizing $1.08 \pm 0.04 \mu\text{m}$ hematite cubes except that the 100 ml of 5 M NaOH solution was added in 40 s while stirring. The cube's size was determined by measuring the side to side length of at least 100 particles from scanning electron microscopy (SEM) using ImageJ. For imaging, a $50 \mu\text{l}$ suspension of hematite cubes of concentration of 0.05 wt/v% was spread and dried on a glass substrate at room temperature. After sputter coating the substrate with a 5 nm Pt/Pd layer (Cressington 208HR sputter coater), the sample was imaged using scanning electron microscopy (SEM) (Thermo-Fisher ApreoSEM).

2.1.3. Particle Zeta Potential Measurement using Dynamic Light Scattering

Zeta potential was measured using a Malvern Zetasizer nano ZSP equipped with a He-Ne gas laser with a wavelength of 632.8 nm. A dilute dispersion with a concentration of 0.005 wt/v% of each cubic and spherical particles was prepared in Milli-Q water and sonicated for at least 10 min at 20 °C temperature and 37 MHz frequency. Then, the suspension of particles was placed in the sample holder and allowed to equilibrate at 25 °C temperature, before the zeta potential was measured. For each particle, the reported zeta potential is an average of three separate measurements.

2.1.4. Sample Preparation for Self Assembly and Microscopy Imaging

First, the concentration of particles was adjusted to 4.55×10^9 particles ml^{-1} (for $1.00 \pm 0.05 \mu\text{m}$, $0.97 \pm 0.05 \mu\text{m}$, $2.00 \pm 0.05 \mu\text{m}$, and $2.06 \pm 0.05 \mu\text{m}$ spheres), 1.13×10^9 particles ml^{-1} (for $4.55 \pm 0.05 \mu\text{m}$, and $4.62 \pm 0.05 \mu\text{m}$ spheres) and 4.55×10^7 particles ml^{-1} (for $0.83 \pm 0.03 \mu\text{m}$, and $1.08 \pm 0.04 \mu\text{m}$ cubes). Before assembly, the particle dispersions were sonicated for at least 15 min at 20 °C temperature and 37 MHz frequency to break up any aggregates. We mixed 200 μl of cubic particles with 200 μl spherical particles. We used a particle number ratio of spheres to cubes of 100:1 for the preparation of AB_6 and AB_4 valence colloidal molecules, and 25:1 for the preparation of AB_2 valence colloidal molecules. The assembled colloidal molecules were imaged using a custom-made sample holder equipped with a standard round glass coverslip on bottom and top. The prepared colloidal molecules were imaged using a Nikon TI-E A1 inverted bright field microscope using a 100x Oil objective (N.A 1.4) equipped with a Prime BSI Express camera (Teledyne Photometrics).

2.1.5. Preparation of Fused Colloidal Molecules

Colloidal molecules were separated from the excess spheres using a handheld magnet. Separated polystyrene-hematite colloidal molecules were fused as per the procedure described by Hueckel et al. [36] For this, 1 ml of 10 v/v% THF solution in Milli-Q water was prepared, and 50 μl of the separated colloidal molecules dispersion were added to the THF solution. In THF solution, the solid polymer spheres flow, fuse and stick to the cubes. We allowed the fused colloidal molecules to settle under gravity, before removing the supernatant and replacing it with Milli-Q water to quench the process and re-solidify the spheres. The polystyrene spheres became firmly attached to the cubes through this procedure. For imaging, 20 μl of fused colloidal molecules were dried on a glass substrate at ambient temperature. Then, the substrate with dried colloidal molecules was sputter-coated with a 5 nm Pt/Pd layer (Cressington 208HR sputter-coater) and imaged

using scanning electron microscopy (SEM) (Thermo-Fisher ApreoSEM).

2.2. Numerical Section

2.2.1. Monte Carlo Simulations

To shed light on the self-assembly process of satellite spheres onto cubes, we performed NVT Monte Carlo simulations. We fixed a cube with side length σ_c in the center of the simulation box and started our simulations by randomly placing N spheres of size σ_s in the simulation box, thereby avoiding any overlap between the spheres and the cube. We varied the size ratio $\alpha = \sigma_s/\sigma_c$ from 1.0 to 5.6. We set the number of spheres N equal to either 25 or 100, so that the ratio between the number of spheres and cubes matched that in the experiments. To account for the homogeneous surface charge of the cubes, we tessellated the cube surface with spherical beads of size σ . We used σ as our unit of length in the simulations and fixed the side of the cube $\sigma_c = 5\sigma$. To describe the electrostatic and excluded-volume interactions between the hematite cores and the satellite spheres in the experiments, we described the interactions between the spherical beads composing the cube and the satellite spheres by a hard-sphere (HS) and attractive screened Coulomb (Yukawa) potential [39] $U_{Y,cs}(r_{ij})$ so that the total interaction potential $U_{cs}(r_{ij})$ reads

$$\beta U_{cs}(r_{ij}) = \begin{cases} \infty & r_{ij} \leq \sigma_{cs} \\ \beta U_{Y,cs}(r_{ij}) & r_{ij} > \sigma_{cs}, \end{cases} \quad (1)$$

where $\beta = 1/k_B T$ with k_B the Boltzmann constant and T the temperature, $\sigma_{cs} = (\sigma_s + \sigma)/2$, r_{ij} denotes the center-of-mass distance between bead i and satellite particle j , and

$$\beta U_{Y,cs}(r_{ij}) = -\epsilon_{cs} \frac{\exp[-\kappa \sigma_{cs}(r_{ij}/\sigma_{cs} - 1)]}{r_{ij}/\sigma_{cs}}, \quad (2)$$

where the dimensionless prefactor ϵ_{cs} describes the interaction strength and κ the inverse screening length. The satellite spheres repel each other via a HS potential and a screened Coulomb repulsion $U_{Y,s}(r_{ij})$, and the total interaction potential $U_{ss}(r_{ij})$ reads

$$\beta U_{ss}(r_{ij}) = \begin{cases} \infty & r_{ij} \leq \sigma_s \\ \beta U_{Y,s}(r_{ij}) & r_{ij} > \sigma_s, \end{cases} \quad (3)$$

with

$$\beta U_{Y,s}(r_{ij}) = \epsilon_s \frac{\exp[-\kappa \sigma_s(r_{ij}/\sigma_s - 1)]}{r_{ij}/\sigma_s}. \quad (4)$$

As the experiments were performed in water, we set the inverse Debye screening length to $\kappa = 0.1 \text{ nm}^{-1}$, which corresponds to about $20\sigma^{-1}$. By increasing κ , we observe only minor effects in the cluster size distribution, as shown in Figure S7. We fixed the interaction strengths $\epsilon_s = 10$ and $10 \leq \epsilon_{cs} \leq 100$. The effect of varying ϵ_{cs} on the average cluster size is shown in Figure S8, while in the main text we report results for $\epsilon_{cs} = 15$. The resulting interaction potentials are extremely short-ranged and steep, and hence the effect on the assembly is that in case a sphere interacts with a cube, the sphere remains attached and only slightly fluctuates around its initial contact point. To study the self-assembly process, we performed Monte Carlo simulations for each size ratio for 10^6 Monte Carlo steps starting from 100 to 1000 different initial configurations.

2.2.2. Parking Problem

We compared our particle clusters as obtained from Monte Carlo simulations with two different implementations of the ‘‘random parking’’ algorithm. [40] The random parking problem addresses the question of how many particles can be parked onto the surface of a central particle in case the sites are randomly cho-

sen and the particles are non-overlapping. The random parking algorithm has been applied for parking spheres on a sphere. [30,40]

Here, we examined the random parking of spheres onto the surface of a cube. We considered two different implementations of the random parking algorithm. In the first case, N spherical particles diffuse in the simulation box and a sphere is considered as “parked” onto the cube once the minimum distance condition between a sphere and a cube is satisfied. The minimum distance between the surface of a cube with side length σ_c and the center of a sphere with diameter σ_s is equal to $\sigma_s/2$. To this end, we employed the Oriented Cuboid Sphere Intersection (OCSI) algorithm to detect overlap between cuboids and spheres. [41] We refer to this implementation of the random parking algorithm as the parking problem based on *random adsorption* of satellite spheres onto a cube. The second implementation provides a simpler approach to the problem. We randomly selected a point on the surface of the cube and in case the no-overlap condition between spheres is satisfied, we placed a particle of diameter σ_s at that position. This second implementation is referred to as the parking algorithm based on *selecting a random site* on the surface of the cube. In both cases, we ignored the screened Coulomb interactions between the particles and only considered excluded-volume interactions. We investigated the particle clusters using the two different implementations of the random parking algorithm for the same range of size ratios α as in the Monte Carlo simulations.

3. Results and Discussion

3.1. Assembly and Purification Strategy for Colloidal Clusters

To assemble colloidal molecules, we follow a procedure based on hetero-coagulation of oppositely charged colloids into small clusters. Upon mixing two species that attract each other, finite sized clusters are being formed if one species is used in excess of the other. [30,33,42,22] The particles that are being used in excess assemble on the second particle type until it is fully covered. This approach is not restricted to colloids interacting through electrostatic interactions, but it has also been shown for spheres modified with complementary DNA strands. [17,30,18] Here, we use cubic particles made from hematite as the core particles of the cluster because they feature two crucial advantages: (1) their non-spherical, cubic shape can be exploited as a mean to control the number of bound satellite particles and thus the shape of the resulting colloidal molecules, and (2) their permanent magnetic dipole moment can be used to separate the colloidal molecules from other particles after assembly.

An overview of the general procedure for preparing and isolating colloidal molecules is shown in Fig. 1. In a typical experiment, we mixed positively charged cubes that were dispersed in water with an excess number (25:1 or 100:1, see Methods) of negatively charged spheres, either made from polystyrene or silica, of various sizes (see Table 1) and allowed them to self-assemble for 15 min. A schematic of the process is depicted in Fig. 1a and bright-field microscopy images of the initial particle dispersions are shown in panels a' and a". We found that longer assembly times did not significantly affect the number of bound satellite spheres. The excess of negatively charged spheres leads to quick saturation of the cubic core particles and hence formation of finite size clusters, the colloidal molecules. [17,30] In each colloidal molecule a cube is surrounded by N spherical particles, see Fig. 1b and b'. The net charge of the resulting colloidal molecule is negative as multiple negatively charged spheres adhere to a single positively charged cube, see Table 1, thereby overcompensating its charge. Their negative charge stabilizes the clusters against further aggregation,

although this is much less pronounced than for clusters assembled in non-aqueous media. [22] The assembled colloidal molecules can therefore be characterized by the number of adsorbed spheres N . The positions of the spheres on the cube particles are static due to the strong attraction between the particles.

The permanent magnetic dipole of the hematite cores allows us to selectively isolate colloidal molecules with a magnetic field created using a handheld magnet, see Fig. 1c. Under the influence of the magnetic field, the colloidal molecules migrate towards the magnet, leaving behind a large number of excess spheres suspended in the upper layers of the fluid (see Methods). These could be removed by extracting the supernatant using a micropipette, and refilling the sample to its initial volume with Milli-Q water. To remove as many free spheres as possible, the same procedure was repeated three times, yielding high concentrations of colloidal molecules, see Fig. 1d and d'. The self-assembly experiments were carried out at a low particle solid content such that we could easily follow the progress while also ensuring proper mixing between the two particle species. Assembly at a higher solid content should in principle be feasible as well, if proper mixing can be ensured and if a large number ratio between spheres and cubes is maintained to guide the self-assembly.

3.2. Geometric Effects in Determining the Cluster Size of Electrostatically Assembled Colloidal Molecules

The main organizational principle in hetero-coagulation-type assembly of colloidal clusters is the geometry of the constituents and, potentially, electrostatic effects. Considering geometry only, the size ratio α between the satellite particles and the core has been found to determine their maximum number, for clusters made from two species of spheres. [31,30] In addition, electrostatic repulsion between the satellite particles may lower their geometrically determined maximum number. [22] The shape of the central particle may further limit the number of adsorbed spheres. [24]

To test the effects of electrostatic interactions and shape of the central core, we exploited the predictive power of numerical simulations to investigate their combined influence on the size and yield of the assembled clusters for different size ratios. We run Monte Carlo simulations in which a repulsive and an attractive Yukawa pair potential account for the screened Coulomb interactions between spherical satellite particles of diameter σ_s , and between the latter and the cubic core with edge length σ_c , respectively. As all experiments were performed in aqueous environments, we set the inverse Debye screening length to 0.1 nm^{-1} . The resulting Yukawa potential is thus extremely short-ranged and steep for both the attractive and repulsive interactions. We performed Monte Carlo simulations for different initial configurations in the presence of an excess of colloidal spheres. We provide more details on the numerical simulations in the Methods section.

We then determined the number of satellite spheres N adsorbed onto a central cubic particle for varying size ratios $\alpha = \sigma_s/\sigma_c$. In Fig. 2, we plot the probability, i.e. the normalized yield, of clusters with N satellite spheres adsorbed onto the surface of a cube as a function of size ratio α . It emerges immediately that for $1.2 \lesssim \alpha \lesssim 2$ the cubic shape of the central core is the limiting factor for the number of bound satellite particles, allowing for only one particle per facet to be bound resulting into six-satellite-particle clusters. This is very different from the behavior that would be observed when satellite spheres are adsorbed onto the surface of a spherical central colloid, as was demonstrated in previous work. [30] In the case of adsorption onto a sphere, the range in which six-satellite-particle clusters are observed is much narrower and the corresponding maximum theoretical yield is 30% lower. The robustness of the resulting colloidal molecules towards variation

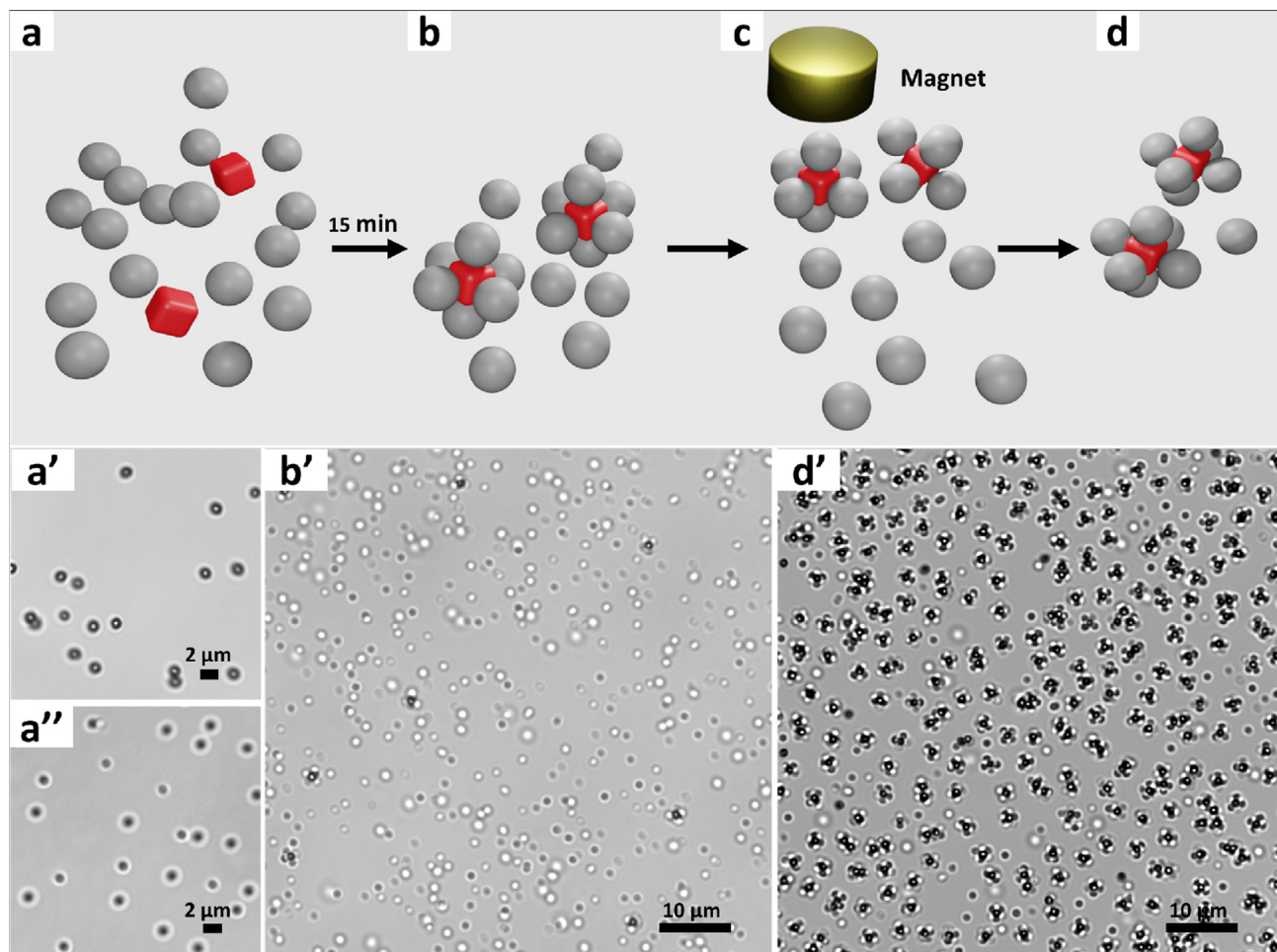


Fig. 1. Schematic illustrating the process of assembly and separation of colloidal molecules prepared from a binary mixture of negatively charged spheres and positively charged cubes. (a) A mixture of positively charged cubes (depicted in red, and shown in a bright-field microscopy image in panel (a')) and an excess number of negatively charged spheres (depicted in grey, and shown in the bright-field microscopy image in panel (a'')). (b) Spontaneously self-assembled colloidal molecules driven by electrostatic attractions between cubes and spheres. The excess number of spheres leads to saturation of the cube surface and hence finite size clusters. The cubic shape and size ratio of the cubes and spheres determine the cluster size. An example of the assembled clusters and the large excess amount of spheres is shown in panel (b'). (c) The permanent magnetic dipole of the cubic particles allows separation of colloidal molecules from unbound spheres with a magnet, yielding (d, d') isolated colloidal molecules after removal of suspended excess spheres.

Table 1

Colloidal particles used in the experiments and their materials, notation, size and standard deviation, zeta potential and standard deviation of the zeta potential as measured by dynamic light scattering. For spheres, the diameter is reported as their size; for hematite cubes, the edge length is reported.

Material	Notation	Size (μm)	Zeta Potential (mV)	Standard Deviation (mV)
Polystyrene Spheres (PS)	PS1	1.00 ± 0.05	-38	5.2
	PS2	2.00 ± 0.05	-47	2.0
	PS3	4.55 ± 0.05	-45	3.2
Silica Spheres (Sil)	Sil1	0.97 ± 0.05	-45	8.9
	Sil2	2.06 ± 0.05	-57	1.1
	Sil3	4.62 ± 0.05	-79	4.6
Hematite Cubes (HC)	HC1	0.83 ± 0.03	31	1.8
	HC2	1.08 ± 0.04	27	3.3

in the size ratio also explains why colloidal molecules based on templating polyhedral particles could be achieved without an extensive search for optimal size ratios. [24]

In the case of adsorption onto a cube, the available space for binding a second sphere to a facet is greatly reduced when a sphere is already attached to that facet. For $\alpha \lesssim 1.2$, the anisotropic shape of the central particle has no or little effect on the number and organization of bound particles. [36] For $\alpha \gtrsim 2$, the percentage of clusters with less than six satellite particles gradually increases with α , as the adsorption of spheres on an adjacent facet becomes

increasingly restricted. It appears that the highest yield for clusters with four satellite particles is reached for $\alpha = 2.48$, which is slightly higher than for the adsorption onto a sphere, where the highest yield was found for $\alpha = 2.41$ for tetrahedrally arranged particles. For an even higher size ratio, the number of satellite particles is further reduced up to $\alpha \approx 4$ for which their size is such that at most two particles can be bounded.

We experimentally tested these predictions by assembling colloidal clusters from hematite cubes with edge lengths $0.83 \pm 0.03 \mu\text{m}$ (HC1) and $1.08 \pm 0.04 \mu\text{m}$ (HC2), and spheres made of either

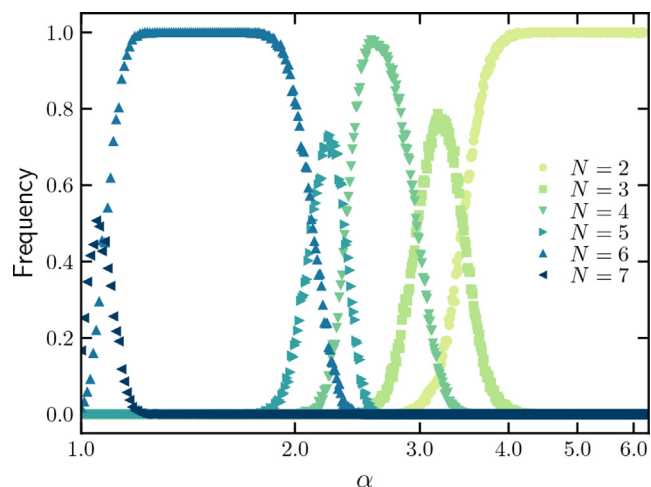


Fig. 2. Normalized yield of clusters with N adsorbed satellite spheres as a function of size ratio $\alpha = \sigma_s/\sigma_c$ as obtained from Monte Carlo simulations with a repulsive screened Coulomb potential between the satellite spheres with diameter σ_s and an attractive screened Coulomb potential between the satellite spheres and the central cube with an edge length σ_c .

polystyrene or silica, with various sizes. In particular, we chose polystyrene spheres (PS) with a diameter of $1.00 \pm 0.05 \mu\text{m}$ (PS1), $2.00 \pm 0.05 \mu\text{m}$ (PS2) and $4.55 \pm 0.05 \mu\text{m}$ (PS3), and silica spheres (Sil) with size $0.97 \pm 0.05 \mu\text{m}$ (Sil1), $2.06 \pm 0.05 \mu\text{m}$ (Sil2) and $4.62 \pm 0.05 \mu\text{m}$ (Sil3). The size and charge of the various satellite and core particles used in this study are listed in Table 1. The use of both polystyrene and silica spheres of similar sizes allows us to demonstrate the method's generality and identify the impact of electrostatic and gravitational effects on the cluster size distribution. After assembly, we measured the cluster size distribution by manually counting 100–130 clusters from at least two distinct microscope images or videos of magnetically separated clusters. We excluded unbound spheres and non-specific aggregates of the same type of particle. Videos were used to analyze three-dimensional clusters from small spheres and cubes ($\alpha = 1.20$). Still images were instead used for colloidal molecules made from larger spheres because they could be more easily distinguishable.

AB_6 -configuration clusters are indeed found for size ratios $\alpha = 1.20$ (for polystyrene spheres) and $\alpha = 1.16$ (for silica spheres), for which representative bright-field microscopy images together with a schematic drawing can be found in Fig. 3a, e, i and m. Additionally, we show a representative configuration from Monte Carlo simulations for the same size ratios in Fig. 3q. Most importantly, such clusters constitute the most dominant fraction of clusters as compared to other configurations, as shown by the cluster size distribution reported in Fig. 4a and b for polystyrene and silica spheres, respectively. Consistently, at a comparable size ratio, this is also the most dominant fraction of clusters found in simulations, as reported in Fig. 4c. The yield of 0.64 and 0.82 for PS and silica, respectively, at this size ratio is similar and higher than the maximum yield of about 0.7 that was found previously for AB_6 sphere-sphere clusters at the optimal size ratio, at which also AB_5 and AB_7 were found. [30] We notice that this yield was only determined theoretically, and a presumably lower value can be expected for experimentally obtained sphere-sphere clusters. We further note that our experimentally chosen size ratio was not optimized for yield, although it is close to the geometrically expected size ratio for a maximum yield.

By increasing the size ratio, the number of spheres bound per cube decreases, as expected. At $\alpha = 1.85$ and $\alpha = 1.90$, clusters with a predominantly AB_5 and AB_4 geometry were observed for

polystyrene and silica spheres, respectively. At this size ratio, a higher yield of AB_4 of about 0.6 is achieved for silica spheres, with such clusters typically having all particles arranged in a plane. Clusters from both types of particles have a broader distribution, meaning that at this size ratio the transition from AB_6 to AB_2 is still ongoing. From the schematic drawing shown in Fig. 3b and the representative image from Monte Carlo simulations in Fig. 3r it becomes apparent that indeed the packing on the surface of the cube becomes tight at this size ratio. Close-ups of bright-field microscopy images of the corresponding clusters are shown in Fig. 3f and n, for polystyrene and silica spheres, respectively.

For slightly larger polystyrene spheres with a size ratio $\alpha = 2.40$, we find predominantly, i.e. in 78% of all cases, clusters with AB_4 geometry (Fig. 3c and g, and Fig. 4a), while 21% of the clusters feature three spheres. This size ratio is still below the one at which the transition AB_2 would be expected. From the bright-field images (Fig. 3g) and simulation snapshot (Fig. 3s) it is visible that the four outer spheres typically do not lie in the same plane, but feature three particles in the same plane and one particle above. At a similar, although slightly higher, size ratio of $\alpha = 2.48$, clusters containing silica particles already feature mostly AB_3 -type clusters, that is 67%. In contrast to the polystyrene-based clusters, the three spheres and cube are arranged in a plane, see Fig. 3k, and o.

Finally, at an even higher size ratio, we find almost exclusively AB_2 clusters for both polystyrene ($\alpha = 5.48$) and silica spheres ($\alpha = 5.56$), with a yield of 0.96 for PS and 0.80 for silica based clusters, as shown in Fig. 4. A schematic drawing and corresponding bright-field microscopy images of the resulting clusters, illustrating the exclusion of a third particle from the surface of the cube, can be found in Fig. 3d, h, l, and p. Accordingly, in simulations, at $\alpha = 5.40$ we only find clusters like the one shown in Fig. 3t, as demonstrated by the normalized frequency reported in Fig. 4c.

Comparing the cluster size distributions shown in Fig. 4a and b, we find that at similar size ratios, polystyrene based clusters have a slightly larger cluster size, i.e. more particles are bound to the surface of the cube. This becomes even clearer in Fig. 4d, where the average cluster size for both polystyrene and silica spheres is shown. Again, on average the cluster size of polystyrene-hematite colloidal molecules is slightly larger than that of silica-hematite ones. In addition, for a similar size ratio, we noticed a wider cluster size distribution in polystyrene based colloidal molecules. The consistently larger size of the assembled colloidal molecules obtained from using polystyrene spheres can be understood from the combined effect of electrostatic repulsion and gravitational confinement to quasi-2D. Silica particles are more negatively charged than polystyrene particles of the same size, as demonstrated by the zeta potential measurements displayed in Table 1. A stronger repulsion implies that fewer silica particles can be accommodated on the cube's surface, equivalent to an effectively larger size. Electrostatic repulsion between the outer spheres have also been found to play a role in experiments and simulations on sphere-sphere clusters in a non-aqueous solvent. [22] There, it was demonstrated that the cluster size of colloidal molecules is dependent on the size ratio, charge, and density of the particles, and in particular that an increase in particle charge implies a decrease in the average size of the colloidal molecules. However, we expect that the impact of the different zeta potential values on the cluster size in our case is still small compared to the geometric effects imposed by the size ratio of the cube and sphere, and the anisotropic shape of the cube.

Secondly, the higher density of silica leads to a lower gravitational height compared to that of polystyrene spheres, whose density is close to that of the surrounding medium. While this effect is negligible for small silica spheres, it is clearly visible for larger ones, where quasi-2D clusters are being formed. At size ratios that

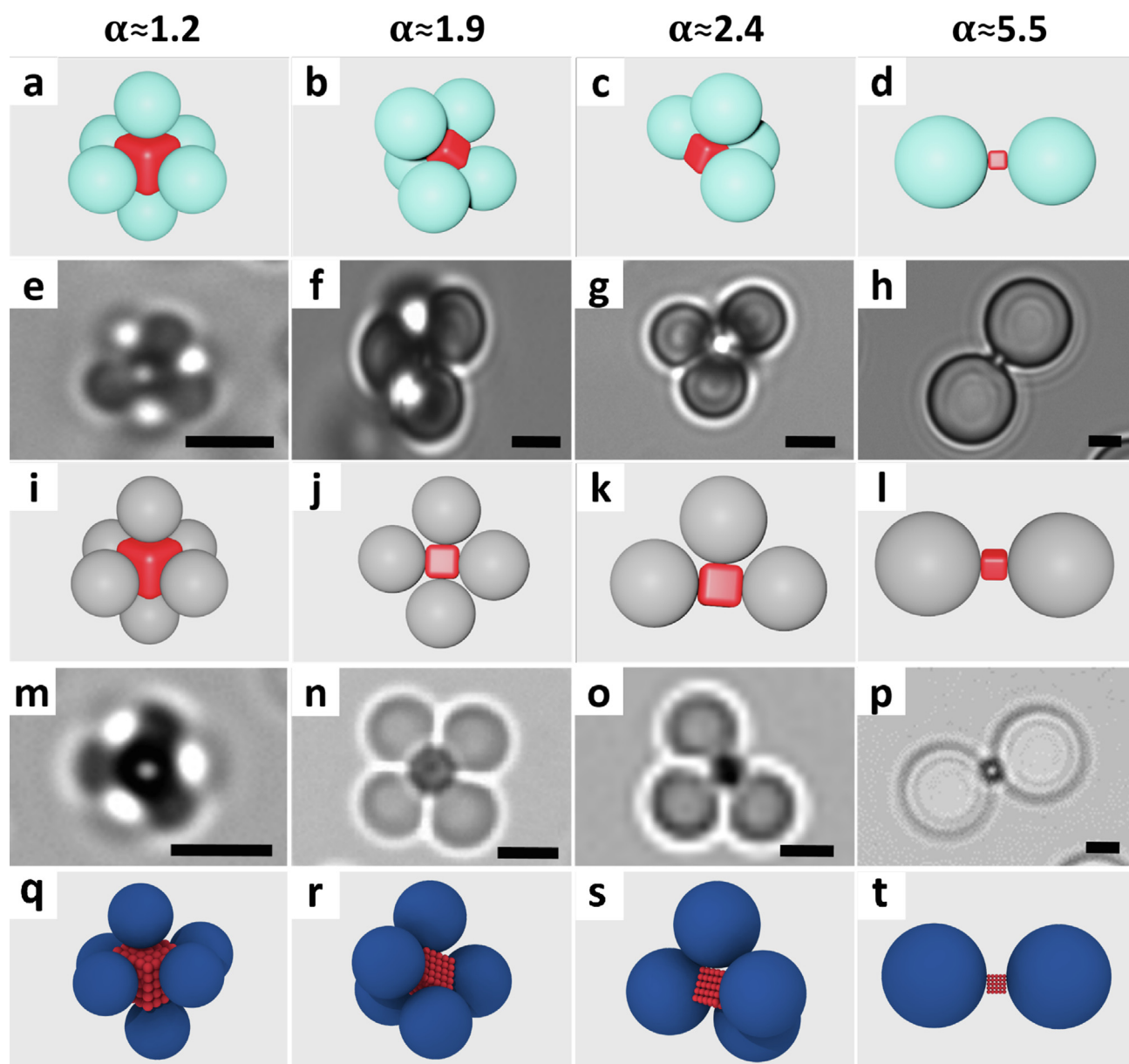


Fig. 3. Electrostatically assembled colloidal molecules made from cubes and spheres for different size ratios α . (a-d) and (i-l) rows show schematic depictions of the bright-field microscopy images of colloidal molecules prepared from (e-h) polystyrene spheres and hematite cubes, and (m-p) silica spheres and hematite cubes. For $\alpha > 1$, a maximum of six spheres can be bound to the central cube as shown for (e) $\alpha = 1.2$ and (m) $\alpha = 1.16$, and slightly larger size ratios (f) $\alpha = 1.85$ and (n) $\alpha = 1.90$. For $\alpha \geq 2.40$, the number of bound particles decreases further, as experiments with (g) $\alpha = 2.40$ and (o) $\alpha = 2.48$ demonstrate. For $\alpha \geq 4$, only two spheres can be bound per cube, see (h) $\alpha = 5.48$, and (p) $\alpha = 5.56$. Scale bar is $2 \mu\text{m}$. (q-t) Representative snapshots of colloidal molecules obtained from Monte Carlo simulations for size ratios $\alpha = 1.20, 1.90, 2.40$, and 5.50 .

should still allow binding of six spheres to the cube, often only four are being found. This implies that despite tumbling the sample during assembly which should enable 3D clusters, the clusters reorganize with spheres breaking off due to the quasi-2D confinement in the sample holder. The uniformity of the assembled colloidal molecules exemplifies that gravitational confinement can be used as an additional strategy to assemble AB_4 clusters instead of AB_6 with a rather uniform shape.

When comparing the size distribution of binary clusters assembled from spheres and cubes with those made previously from spheres only, we find that the yields for a specific AB_N are higher than what has been achieved for spheres, [17,30,22] with the exception of AB_4 at the very specific size ratio $\alpha = 2.41$, which constitutes a special case. In addition, the highest yield for AB_4 type

colloidal molecules with a cube at the center is slightly shifted to higher α , [30] just like other specific cluster sizes. This is a direct consequence of the faceting of the cubic template.

We also note that for all size ratios, we consistently find smaller yields and slightly wider distributions of the most likely cluster size in experiments compared to the ones predicted by Monte Carlo simulations, see Fig. 4. We hypothesize that this discrepancy stems from a combination of the polydispersity in particle size and shape in the experiments for both satellite and core particles. Furthermore, the experimental cluster size distributions were obtained after magnetic separation of the colloidal molecules, a procedure that might break off some of the adsorbed spheres. This is corroborated by the fact that we never observed larger cluster sizes in experiments than those theoretically predicted by simula-

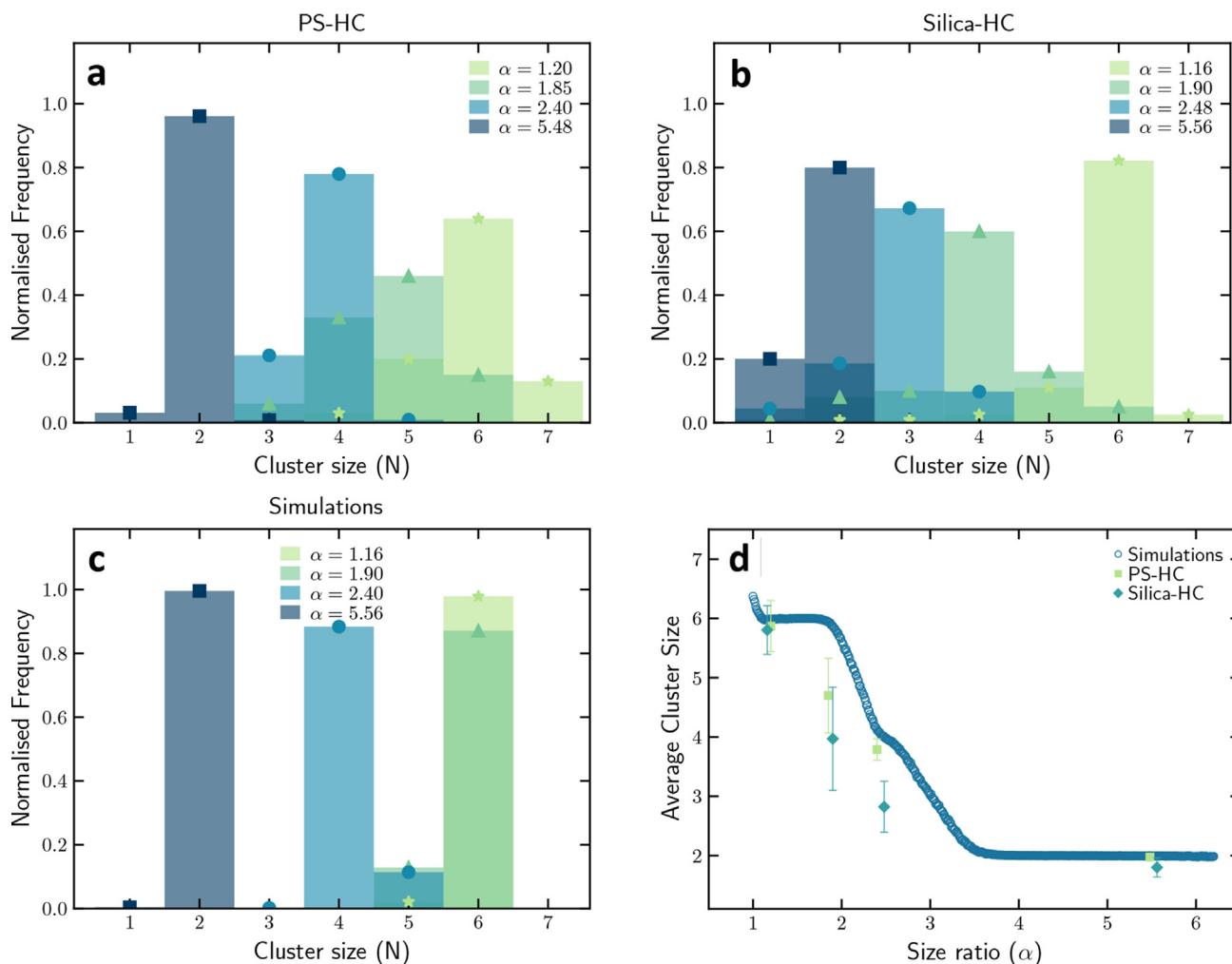


Fig. 4. Cluster size distributions of colloidal molecules assembled from hematite cubes and (a) polystyrene or (b) silica spheres and (c) cluster size distributions for different values of the size ratio α obtained from Monte Carlo simulations. (d) Average cluster size of colloidal molecules assembled from polystyrene spheres and hematite cubes (PS-HC), silica spheres and hematite cubes (Silica-HC), and from Monte Carlo simulations as a function of size ratio α . The error bars represent standard deviation. Symbols and colors in (a)–(c) indicate different size ratios. The error bars represent the mean absolute deviation around average cluster size. Data in (c)–(d) correspond to $\epsilon_{cs} = 15$.

tions. It is worth noting that on average, the sizes of the experimentally and numerically observed clusters are always comparable, with a remarkably good agreement in particular for AB_6 and AB_2 clusters. Such comparison is reported in Fig. 4d.

Finally, to obtain a deeper understanding on the assembly mechanism and on the obtained cluster size distributions, it is interesting to compare our outcomes to what was previously found for sphere–sphere clusters, assembled from two different species of spheres, one of which is in excess with respect to the other. In particular, it was shown that the resulting cluster size distributions agree well with those found for the “random parking” problem. Therein, no interaction potential is taken into account and spheres are simply *parked* onto the surface of the central colloid (see Methods), given that they stick randomly and irreversibly on each other surfaces. [30] We thus investigate whether this also holds in the case of a cubic core particle. To this end, we determined the cluster size distributions and averaged cluster size by implementing two versions of the random parking algorithm. We first employed a random parking algorithm based on random adsorption of satellite spheres onto a cube. As shown in Figure S1–S3 of the Supplementary Material, we clearly observe that the number of spheres attached to a cube is higher than observed in experiments and Monte Carlo simulations, presented earlier in this section. Analyzing the resulting clusters as obtained from the random adsorption

parking algorithm, we observe a tendency of satellite particles to be located on the edges and corners of the cubes rather than the faces, leading to more free space for other satellite particles to be bound and thus to higher averaged numbers of bound spheres. In Figure S3, we show typical configurations of the resulting clusters.

We additionally employed a much simpler random parking algorithm based on selecting a random site on the surface of a cube. Remarkably, we find that the cluster size distribution and average cluster size obtained with this approach matches very well with the ones obtained from experiments and Monte Carlo simulations, as shown in Figure S4 and S5. As the probability to select a random site on one of the faces of the cube is much higher than on one of the edges or corners of the cube, this finding confirms again the preference of the satellite spheres to be located on the faces of the cube (see Figure S6). The different cluster size distributions as obtained from the random parking algorithm based on random site selection or random adsorption can be explained as follows. In the case of random adsorption, the adsorption site is determined by the minimal center-to-surface distance of the satellite sphere and the cubic core, resulting into a cuboidal surface for the center of masses of the bound satellite spheres. Hence, the preference to stick to the corners and edges of the cube is much higher for random adsorption than in the case of selecting a ran-

dom site on the surface of a cube, leading to significantly different cluster size distributions.

We conclude that the sixfold symmetry of the cubic core favors the assembly of colloidal molecules with six, four, and two satellite spheres in symmetric arrangements. The templating effect of the symmetry of the core structure onto the surrounding particle arrangement has previously been seen in colloidal assembly on metal–organic framework particles [24] and levitating droplets. [43] In our case, the effect of the anisotropic particle shape and symmetry can only be leveraged if the interactions between the cube and sphere are attractive and if the interactions between the adsorbing spheres are repulsive, and neither are extreme. While we here employed interaction potentials that model the electrostatic interactions between the experimentally employed particles, we expect that a similar strategy to assembly colloidal molecules in high yields and specific symmetries can be obtained with other interaction potentials as well, such as depletion-induced [20] or hydrophobic interaction. [19,44]

3.3. Magnetic Separation of Colloidal Molecules and Fusion of the Adsorbed Spheres

The permanent magnetic dipole moment of the central cube allows us to separate the colloidal molecules after their assembly from the unbound spheres. Easy isolation of the colloidal molecules is useful for any further experimental studies that rely on high concentrations and purity of large quantities. We demonstrate the principle for all samples investigated here, that is both for different size ratios and sphere types.

Fig. 5 shows representative light microscopy images of separated colloidal molecules obtained from different mixtures of polystyrene and hematite colloids. From the large field-of-view images it is evident how high yields of colloidal molecules can be obtained in this way. Such images were used to obtain the cluster size distributions reported in Fig. 4. For example, as discussed above, for $\alpha = 1.20$ shown in Fig. 5a, most colloidal molecules feature one sphere attached to each of the six faces of the cube, resulting in high yields of AB₆-type colloidal molecules. With increasing size ratio from Fig. 5a to d, the number of bound spheres decreases. At size ratios far from the critical ones identified above, that is Fig. 5b and c, the assembled colloidal molecules feature a wider range of number of bound particles. For $\alpha = 5.48$, only AB₂ colloidal molecules are seen, with occasionally single spheres or cubes from a broken cluster.

To demonstrate the generality of the method, we also separated colloidal molecules fabricated from silica spheres and hematite cubes. The representative light microscopy images of separated Sil-HC colloidal molecules obtained for the four size ratios discussed above are shown in Fig. 6a–d. The respective size distributions are shown in Fig. 4b. Again, the number of bound spheres per cube clearly reduces with increasing size ratio. In addition, the larger size and higher density of the silica spheres that was employed in the experiments leads to a large fraction of quasi-2D colloidal molecules, which increases with the size of the silica spheres. For this reason, AB₄ and AB₃-type clusters prepared from silica spheres, as shown in Fig. 6b and c, have a different geometry than those assembled from polystyrene, see Fig. 5b and c.

A closer inspection of the sphere arrangement on the cubes is in principle possible by drying the colloidal molecules at room temperature to be able to image them using electron microscopy. However, solvent evaporation induced capillary forces disengaged the particles from the cubes, as shown in Fig. 7a and Figure S9. That clusters were so easily broken also may point out that some clusters might have broken during the magnetic separation. To address this issue, we used a previously described technique for merging

colloidal molecules by the addition of a plasticizer, THF. [36] The results for representative fused AB₆ and AB₇ colloidal molecules are presented in Fig. 7b and c, and were captured using a scanning electron microscope. It is worth noting that, as also observed in simulations, not all spheres are perfectly centered on the cube face and that in the AB₆ cluster, each face of the cube has only one sphere attached.

4. Summary and Conclusions

In our work, we investigated the electrostatically-driven self-assembly of colloidal molecules, determining that simple ingredients such as particle shape and size ratio between colloidal particles are crucial for the clever control of their valence. Using positively charged colloidal cubes and negatively charged spheres in the assembly, we found that the sixfold geometry of the cube can provide AB₆, AB₄, and AB₂-type colloidal molecules in high yields. By complementing experiments with Monte Carlo simulations, we determined the range of size ratios between spheres and cubes for obtaining each colloidal molecule type, and we identified that electrostatic repulsion between the spheres is important to leverage the templating effect of the colloidal cube. At the same time, we assessed how such interactions allow the absorption of the spheres to be preferentially directed to the faces of the cube, thus discouraging the formation of irregular and asymmetric clusters due to the presence of satellite particles on the edges of the core. For this reason, we are able to describe the assembly process of colloidal molecules by a simple parking algorithm in which the adsorption points on the surface of the cube are selected randomly.

The protocol for assembling colloidal molecules we presented is innovative in several respects. First of all, the control of the valence is simply achieved via geometrical factors. In fact, with a single templating shape, it is sufficient to choose the appropriate size of core and satellite particles for obtaining a desired coordination number. Compared with the use of a sphere as the central particle, [22,30] we can achieve both greater selectivity in the type of molecule obtained as well as a higher yield, besides obtaining additional control over the relative position of absorption. Secondly, the presented process is mediated only by electrostatic interactions. Other procedures for obtaining colloidal molecules with different coordination numbers typically require complex functionalization through DNA, [30] colloidal fusion. [14] In the latter case, for instance, the size ratio has never been used as a control parameter. [24] Exploiting electrostatic interactions for the assembly further makes our protocol highly versatile in terms of the choice of the material of the starting building blocks. In fact, we showed that similar colloidal molecules were obtained from polystyrene and silica particles at the same size ratios, matching the average cluster size prediction of Monte Carlo simulations. Finally, by choosing the material of the central core to be hematite, we took advantage of its magnetic properties to separate colloidal molecules from excess spherical particles, [45] thus allowing us to further increase the overall purity. For this reason, we could envision this method to be further exploited for the large-scale fabrication of such colloidal molecules. In contrast, the purification step in other assemblies typically involves multiple sedimentation-redispersion processes by in density gradient centrifugation [34] or fluorescence-activated cell sorting. [35]

We believe that the simplicity and robustness of our approach can be straightforwardly applied to other template geometries beyond the cube, and therefore may be used to assemble colloidal molecules with a manifold of different shapes. [27] The electrostatic assembly method implies that colloids from various materials may be employed and combined into colloidal molecules. Potentially, the shape-based strategy might be extended to other

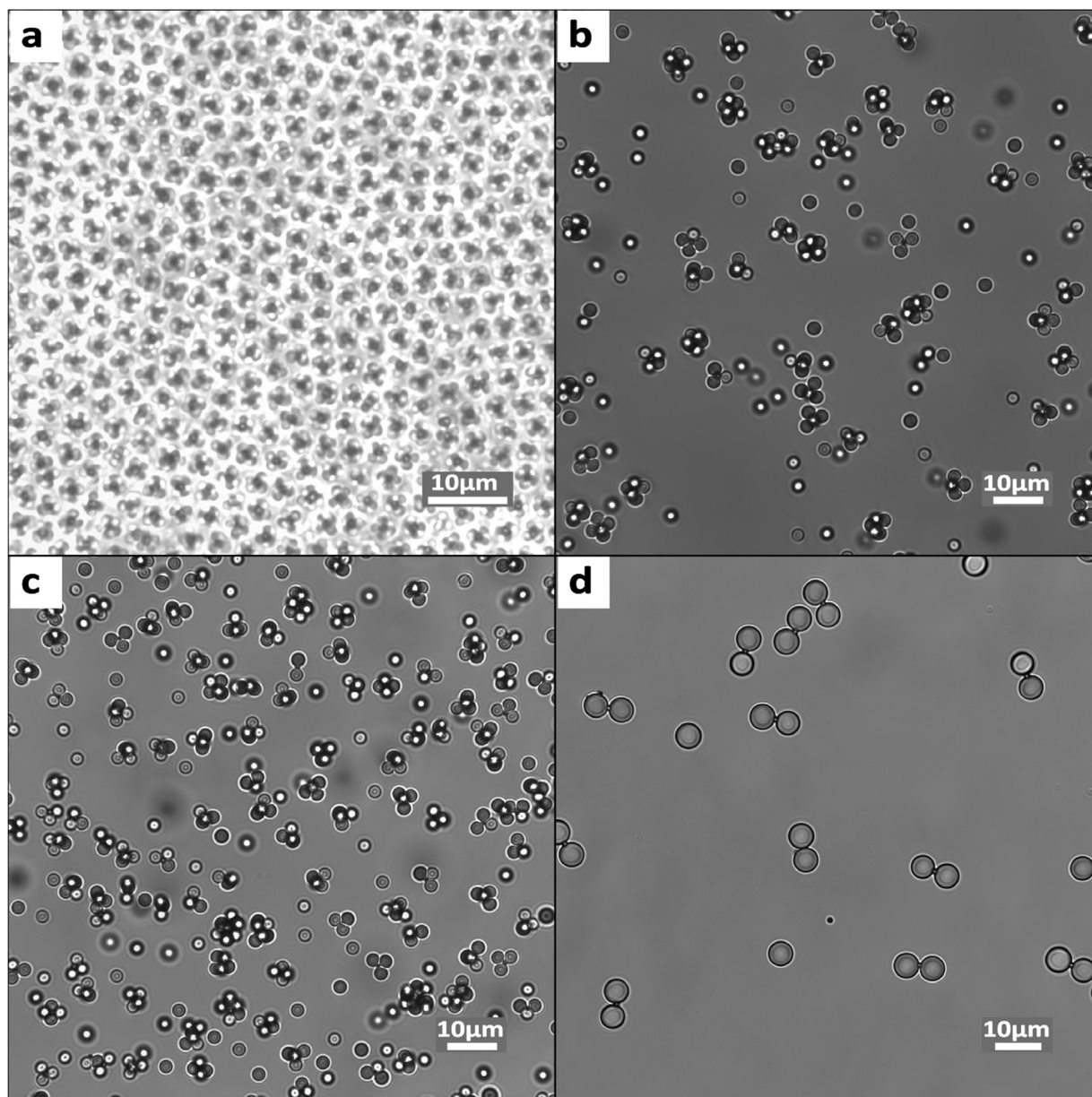


Fig. 5. Bright-field microscopy images of magnetically separated colloidal molecules assembled from polystyrene (PS) and hematite cubes (HC) using different size ratios α : (a) $\alpha=1.20$ assembled from PS1 and HC1, (b) $\alpha=1.85$ (PS2 and HC2), (c) $\alpha=2.40$ (PS2 and HC1), and (d) $\alpha=5.48$ (PS3 and HC1).

driving mechanisms for self-assembly, such as depletion-induced [20] or hydrophobic interaction. [19,44] The high yields obtained through this particle-shape driven method pave the way for using these particles in further self-assembly experiments towards novel materials [46,25] or as model systems for real molecules. [47] Being comprised of both magnetic and non-magnetic particles and not being dependent on particular material properties other than surface charge, the here presented colloidal molecules are particularly interesting for creating colloidal crystals with optical and mechanical properties that can be designed through the size ratio and particle material, and be tuned *in situ* through an external magnetic field.

5. CRediT authorship contribution statement

Yogesh Shelke: Conceptualization, Methodology, Validation, Data curation, Formal analysis, Investigation, Visualization. **Susana Marín-Aguilar:** Data curation, Methodology, Validation, Software, Formal analysis, Investigation, Visualization. **Fabrizio Camerin:** Data curation, Methodology, Validation, Formal analysis, Investigation, Visualization. **Marjolein Dijkstra:** Methodology, Resources, Supervision, Funding acquisition. **Daniela J. Kraft:** Methodology, Resources, Supervision, Funding acquisition. All authors equally contributed to writing the original draft, and reviewing and editing of the final draft.

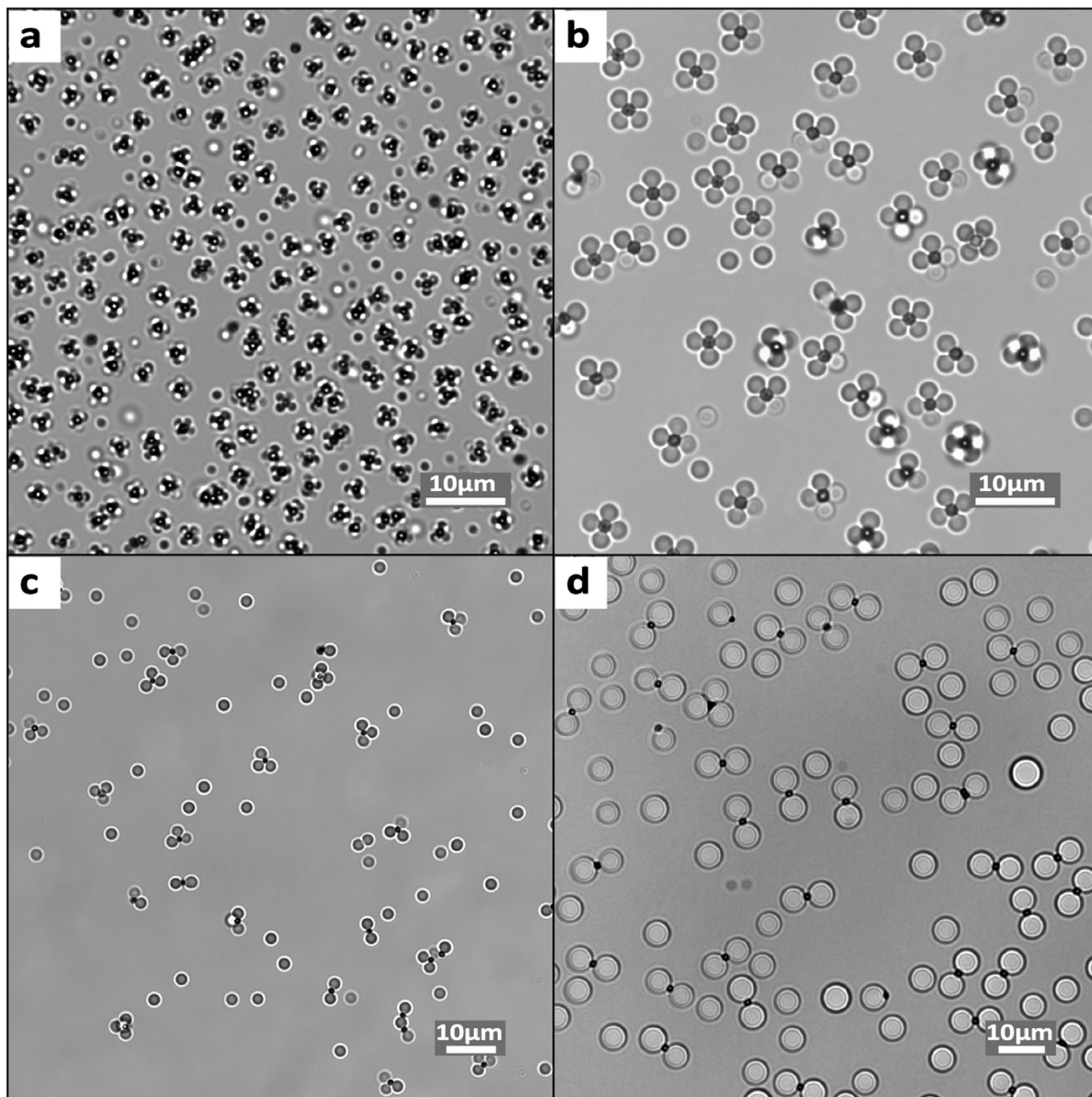


Fig. 6. Bright-field microscopy images of colloidal molecules assembled from silica spheres (Si1) and hematite cubes (HC) using different size ratios α : (a) $\alpha = 1.16$ (assembled from Si1 and HC1), (b) $\alpha = 1.90$ (Si2 and HC2), (c) $\alpha = 2.48$ (Si2 and HC1), and (d) $\alpha = 5.56$ (Si3 an HC1).

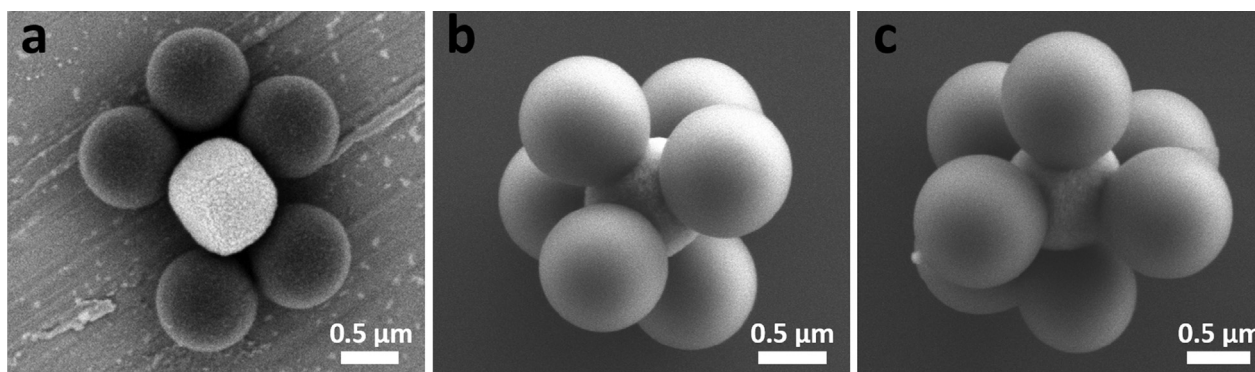


Fig. 7. Scanning electron microscopy images of colloidal molecules assembled from polystyrene spheres and hematite cubes. (a) Dried, unfused colloidal molecules, (b,c) Fused colloidal molecule with six and seven bound spheres, respectively.

Declaration of Competing Interest

The authors declare that they have no known competing financial interests or personal relationships that could have appeared to influence the work reported in this paper.

Acknowledgements

The authors thank Rachel Doherty for SEM imaging. DJK gratefully acknowledges funding from the European Research Council (ERC Starting Grant No. 758383, RECONFMAT). SMA, FC and MD acknowledge financial support from the European Research Council (ERC Advanced Grant No. ERC-2019-ADV-H2020 884902, SoftML).

Appendix A. Supplementary material

Supplementary data associated with this article can be found, in the online version, at <https://doi.org/10.1016/j.jcis.2022.08.158>.

References

- [1] E. Duguet, A. Désert, A. Perro, S. Ravaine, Design and elaboration of colloidal molecules: an overview, *Chem. Soc. Rev.* 40 (2) (2011) 941–960.
- [2] W. Poon, Colloids as big atoms, *Science* 304 (5672) (2004) 830–831.
- [3] M. He, J.P. Gales, É. Ducrot, Z. Gong, G.-R. Yi, S. Sacanna, D.J. Pine, Colloidal diamond, *Nature* 585 (7826) (2020) 524–529.
- [4] K. Aryana, J.B. Stahley, N. Parvez, K. Kim, M.B. Zanjani, Superstructures of multielement colloidal molecules: efficient pathways to construct reconfigurable photonic and phononic crystals, *Advanced Theory and Simulations* 2 (5) (2019) 1800198.
- [5] R. Soto, R. Golestanian, Self-assembly of catalytically active colloidal molecules: tailoring activity through surface chemistry, *Physical review letters* 112 (6) (2014) 068301.
- [6] S. Ni, E. Marini, I. Buttinoni, H. Wolf, L. Isa, Hybrid colloidal microswimmers through sequential capillary assembly, *Soft Matter* 13 (23) (2017) 4252–4259.
- [7] L. Alvarez, M.A. Fernandez-Rodriguez, A. Alegria, S. Arrese-Igor, K. Zhao, M. Kröger, L. Isa, Reconfigurable artificial microswimmers with internal feedback, *Nature Communications* 12 (1) (2021) 1–9.
- [8] H. Löwen, Active colloidal molecules, *EPL (Europhysics Letters)* 121 (5) (2018) 58001.
- [9] Y. Sun, M. Chen, S. Zhou, J. Hu, L. Wu, Controllable synthesis and surface wettability of flower-shaped silver nanocube-organosilica hybrid colloidal nanoparticles, *ACS nano* 9 (12) (2015) 12513–12520.
- [10] L. Tian, Y. Liu, D. Wang, J. Tan, Y. Xie, B. Li, Q. Zhang, C. Zhu, J. Xu, Particle-click-particle: colloidal clusters from click seeded emulsion polymerization, *Polym. Chem.* 13 (2022) 1084–1089.
- [11] D. Schamel, M. Pfeifer, J.G. Gibbs, B. Miksch, A.G. Mark, P. Fischer, Chiral colloidal molecules and observation of the propeller effect, *J. Am. Chem. Soc.* 135 (33) (2013) 12353–12359.
- [12] Y.-S. Cho, G.-R. Yi, S.-H. Kim, D.J. Pine, S.-M. Yang, Colloidal clusters of microspheres from water-in-oil emulsions, *Chemistry of materials* 17 (20) (2005) 5006–5013.
- [13] K.H. Ku, Y. Kim, G.-R. Yi, Y.S. Jung, B.J. Kim, Soft patchy particles of block copolymers from interface-engineered emulsions, *ACS nano* 9 (11) (2015) 11333–11341.
- [14] Z. Gong, T. Hueckel, G.-R. Yi, S. Sacanna, Patchy particles made by colloidal fusion, *Nature* 550 (7675) (2017) 234–238.
- [15] D.W. Kurka, M. Niehues, B.J. Ravoo, Self-assembly of colloidal molecules based on host–guest chemistry and geometric constraints, *Langmuir* 36 (14) (2020) 3924–3931.
- [16] D.J. Kraft, R. Ni, F. Smallenburg, M. Hermes, K. Yoon, D.A. Weitz, A. van Blaaderen, J. Groenewold, M. Dijkstra, W.K. Kegel, Surface roughness directed self-assembly of patchy particles into colloidal micelles, *Proc. Nat. Acad. Sci.* 109 (27) (2012) 10787–10792.
- [17] C.M. Soto, A. Srinivasan, B.R. Ratna, Controlled assembly of mesoscale structures using dna as molecular bridges, *J. Am. Chem. Soc.* 124 (29) (2002) 8508–8509.
- [18] I. Chakraborty, D.J. Pearce, R.W. Verweij, S.C. Matysik, L. Giomi, D.J. Kraft, Self-assembly dynamics of reconfigurable colloidal molecules, *ACS nano* 16 (2) (2022) 2471–2480.
- [19] Q. Chen, J.K. Whitmer, S. Jiang, S.C. Bae, E. Luijten, S. Granick, Supracolloidal reaction kinetics of janus spheres, *Science* 331 (6014) (2011) 199–202.
- [20] S. Sacanna, W.T. Irvine, P.M. Chaikin, D.J. Pine, Lock and key colloids, *Nature* 464 (7288) (2010) 575–578.
- [21] L.K. Månsson, T. De Wild, F. Peng, S.H. Holm, J.O. Tegenfeldt, P. Schurtenberger, Preparation of colloidal molecules with temperature-tunable interactions from oppositely charged microgel spheres, *Soft Matter* 15 (42) (2019) 8512–8524.
- [22] A.F. Demirörs, J.C.P. Stiefelhagen, T. Visser, F. Smallenburg, M. Dijkstra, A. Imhof, A. van Blaaderen, Long-ranged oppositely charged interactions for designing new types of colloidal clusters, *Phys. Rev. X* 5 (2015) 021012.
- [23] A.M. Mihut, B. Stenqvist, M. Lund, P. Schurtenberger, J.J. Crassous, Assembling oppositely charged lock and key responsive colloids: A mesoscale analog of adaptive chemistry, *Science advances* 3 (9) (2017) e1700321.
- [24] Y. Liu, J. Wang, I. Imaz, D. Maspoch, Assembly of colloidal clusters driven by the polyhedral shape of metal–organic framework particles, *J. Am. Chem. Soc.* 143 (33) (2021) 12943–12947.
- [25] M.-A. Moradi, E.D. Eren, M. Chiappini, S. Rzadkiewicz, M. Goudzwaard, M.M. van Rijt, A.D. Keizer, A.F. Routh, M. Dijkstra, G. de With, et al., Spontaneous organization of supracolloids into three-dimensional structured materials, *Nat. Mater.* 20 (4) (2021) 541–547.
- [26] E. Bianchi, B. Capone, I. Coluzza, L. Rovigatti, P.D. van Oostrum, Limiting the valence: advancements and new perspectives on patchy colloids, soft functionalized nanoparticles and biomolecules, *PCCP* 19 (30) (2017) 19847–19868.
- [27] W. Li, H. Palis, R. Merindol, J. Majimel, S. Ravaine, E. Duguet, Colloidal molecules and patchy particles: Complementary concepts, synthesis and self-assembly, *Chem. Soc. Rev.* 49 (6) (2020) 1955–1976.
- [28] S. Ni, J. Leemann, I. Buttinoni, L. Isa, H. Wolf, Programmable colloidal molecules from sequential capillarity-assisted particle assembly, *Science advances* 2 (4) (2016) e1501779.
- [29] Y. Wang, Y. Wang, D.R. Breed, V.N. Manoharan, L. Feng, A.D. Hollingsworth, M. Weck, D.J. Pine, Colloids with valence and specific directional bonding, *Nature* 491 (7422) (2012) 51–55.
- [30] N.B. Schade, M.C. Holmes-Cerfon, E.R. Chen, D. Aronson, J.W. Collins, J.A. Fan, F. Capasso, V.N. Manoharan, Tetrahedral colloidal clusters from random parking of bidisperse spheres, *Phys. Rev. Lett.* 110 (2013) 148303.
- [31] D.B. Miracle, W.S. Sanders, O.N. Senkov, The influence of efficient atomic packing on the constitution of metallic glasses, *Phil. Mag.* 83 (20) (2003) 2409–2428.
- [32] M. Hu, C.-P. Hsu, L. Isa, Particle surface roughness as a design tool for colloidal systems, *Langmuir* 36 (38) (2020) 11171–11182.
- [33] M. Tagliazucchi, F. Zou, E.A. Weiss, Kinetically Controlled Self-Assembly of Latex-Microgel Core-Satellite Particles, *The Journal of Physical Chemistry Letters* 5 (16) (2014) 2775–2780.
- [34] V.N. Manoharan, M.T. Elsesser, D.J. Pine, Dense packing and symmetry in small clusters of microspheres, *Science* 301 (5632) (2003) 483–487.
- [35] P.L. Mage, A.T. Csordas, T. Brown, D. Klinger, M. Eisenstein, S. Mitragotri, C. Hawker, H.T. Soh, Shape-based separation of synthetic microparticles, *Nature materials* 18 (1) (2019) 82–89.
- [36] T. Hueckel, S. Sacanna, Mix-and-melt colloidal engineering, *ACS Nano* 12 (4) (2018) 3533–3540.
- [37] C. van der Wel, N. Bossert, Q.J. Mank, M.G.T. Winter, D. Heinrich, D.J. Kraft, Surfactant-free colloidal particles with specific binding affinity, *Langmuir* 33 (38) (2017) 9803–9810.
- [38] T. Sugimoto, K. Sakata, Preparation of monodisperse pseudocubic α -Fe₂O₃ particles from condensed ferric hydroxide gel, *Journal of colloid and interface science* 152 (2) (1992) 587–590.
- [39] M. Dijkstra, Phase behavior of hard spheres with a short-range yukawa attraction, *Phys. Rev. E* 66 (2) (2002) 021402.
- [40] M.L. Mansfield, L. Rakesh, D.A. Tomalia, The random parking of spheres on spheres, *The Journal of chemical physics* 105 (8) (1996) 3245–3249.
- [41] L. Tonti, A. Patti, Fast overlap detection between hard-core colloidal cuboids and spheres: the ocsi algorithm, *Algorithms* 14 (3) (2021) 72.
- [42] B.G.P. van Ravensteyn, W.K. Kegel, Colloids with Continuously Tunable Surface Charge, *Langmuir* 30 (35) (2014) 10590–10599.
- [43] A.A. Fedorets, E. Bormashenko, L.A. Dombrovsky, M. Nosonovsky, Symmetry of small clusters of levitating water droplets, *PCCP* 22 (21) (2020) 12239–12244.
- [44] Q. Chen, S.C. Bae, S. Granick, Directed self-assembly of a colloidal kagome lattice, *Nature* 469 (7330) (2011) 381–384.
- [45] M. Ozaki, H. Suzuki, K. Takahashi, E. Matijević, Reversible ordered agglomeration of hematite particles due to weak magnetic interactions, *Journal of colloid and interface science* 113 (1) (1986) 76–80.
- [46] S.C. Glotzer, M.J. Solomon, Anisotropy of building blocks and their assembly into complex structures, *Nature materials* 6 (8) (2007) 557–562.
- [47] R.W. Verweij, P.G. Moerman, N.E. Ligthart, L.P. Huijnen, J. Groenewold, W.K. Kegel, A. van Blaaderen, D.J. Kraft, Flexibility-induced effects in the brownian motion of colloidal trimers, *Phys. Rev. Res.* 2 (3) (2020) 033136.