



Universiteit
Leiden
The Netherlands

The first fall is the hardest: the importance of peculiar galaxy dynamics at infall time for tidal stripping acting at the centers of groups and clusters

Smith, R.; Calderón-Castillo, P.; Shin, J.; Raouf Hajar Zarrin, M.; Ko, J.

Citation

Smith, R., Calderón-Castillo, P., Shin, J., Raouf Hajar Zarrin, M., & Ko, J. (2022). The first fall is the hardest: the importance of peculiar galaxy dynamics at infall time for tidal stripping acting at the centers of groups and clusters. *The Astronomical Journal*, 164(3).
doi:10.3847/1538-3881/ac8053

Version: Publisher's Version
License: [Creative Commons CC BY 4.0 license](https://creativecommons.org/licenses/by/4.0/)
Downloaded from: <https://hdl.handle.net/1887/3561691>

Note: To cite this publication please use the final published version (if applicable).



The First Fall is the Hardest: The Importance of Peculiar Galaxy Dynamics at Infall Time for Tidal Stripping Acting at the Centers of Groups and Clusters

Rory Smith¹ , Paula Calderón-Castillo² , Jihye Shin³ , Mojtaba Raouf⁴, and Jongwan Ko^{3,5} ¹ Departamento de Física, Universidad Técnica Federico Santa María, Vicuña Mackenna 3939, San Joaquín, Santiago, Chile; rory.smith@kasi.re.kr² Departamento de Astronomía, Universidad de Concepción, Casilla 160-C, Concepción, Chile³ Korea Astronomy and Space Science Institute (KASI), 776 Daedeokdae-ro, Yuseong-gu, Daejeon 34055, Republic of Korea⁴ Leiden Observatory, Leiden University, Niels Bohrweg 2, 2333 CA Leiden, The Netherlands⁵ University of Science and Technology (UST), Daejeon 34113, Republic of Korea

Received 2021 June 21; revised 2022 June 6; accepted 2022 July 10; published 2022 August 12

Abstract

Using dark-matter-only N -body cosmological simulations, we measure the pericentre distance of dark matter halos on their first infall into group and cluster halos. We find that the pericentre distance (R_{peri}) is an important parameter as it significantly affects the strength of tidal mass loss in dense environments, and likely other environmental mechanisms as well. We examine what determines the R_{peri} value and find that, for most infallers, the dominant parameter is V_{\perp} , the tangential component of the orbital velocity as the halo enters the group/cluster halo for the first time. This means that the strength of tidal stripping acting near the cores of groups/clusters are strongly influenced by the external peculiar velocity field of the large-scale structure surrounding them, which differs between clusters and is sensitive to the mass ratio of infaller to host. We find that filament feeding also partially contributes to feeding in low- V_{\perp} halos. Dynamical friction can also play a role in reducing R_{peri} but this is only significant for those few relatively massive infallers ($>10\%$ of the mass of their host). These results highlight how the response of galaxies to dense environments will sensitively depend on dynamics inherited from far outside those dense environments.

Unified Astronomy Thesaurus concepts: Galaxy dark matter halos (1880); N-body simulations (1083); Galaxy clusters (584); Galaxy groups (597); Orbits (1184); Large-scale structure of the universe (902)

1. Introduction

There is now an abundance of evidence for physical mechanisms operating in dense environments such as galaxy clusters that can transform the properties of galaxies that fall into them. The morphology–density relation (Dressler 1980; Whitmore et al. 1993), the star formation–density relation (Kennicutt 1983), and the atomic gas–density relation (Haynes & Giovanelli 1984) all indicate that existing in dense environments has consequences for galaxy properties.

A variety of physical mechanisms that could cause these changes have been proposed. The large mass of the cluster halo creates a deep, extended potential well whose tidal field can strip dark matter, stars, and gas from satellites (Merritt 1984). Meanwhile, within the cluster there are numerous other cluster members that can have fly-by encounters with each other, a process known as “harassment” (Moore et al. 1996, 1999; Gnedin 2003; Smith et al. 2010, 2013; Bialas et al. 2015; Smith et al. 2015, 2021). Besides tidal-stripping mechanisms there are hydrodynamical mechanisms, such as ram-pressure stripping (Gunn & Gott 1972), which can remove the gas content of a galaxy but leave the stellar content largely unaffected. There is increasing evidence that no single mechanism dominates, and that a variety of mechanisms may conspire to remove the cold gas content and eventually halt star formation (Marasco et al. 2016; see also Cortese et al. 2021 for a recent review).

A satellite galaxy’s orbit within its hosting cluster or group is expected to significantly influence the efficiency of the physical

mechanisms operating in dense environments. A more plunging orbit will take a galaxy deeper into the host to radii where the environmental density is higher. From a gravitational point of view, this is expected to result in stronger tidal mass loss. First, the strength of the tidal field from the main cluster halo increases near the cluster center (Byrd & Valtonen 1990). Second, near the cluster center there are more cluster members and so there is an increased chance of a galaxy suffering high-speed encounters (Smith et al. 2010). Third, as we will show in this study, a galaxy with a plunging orbit also tends to have a higher orbital velocity at the pericentre of its orbit (the closest approach of the galaxy to its host’s center), causing the tidal field to evolve very rapidly, perhaps so fast that the galaxy cannot respond in time. As a result, such a galaxy responds impulsively to the rapid change of tidal field, much like in a high-speed encounter between cluster members (González-García et al. 2005).

A small pericentre is also expected to influence the response of hydrodynamical gas mass-loss mechanisms, as well. The strength of ram-pressure stripping is expected to depend on two main terms: the density of the intracluster medium (ICM) and the square of the velocity at which the galaxy passes through that medium (Gunn & Gott 1972). With a smaller pericentre, a galaxy will tend to pass through a denser ICM and have a higher peak orbital velocity, causing the ram pressure to be significantly stronger from the radial dependency of both terms combined (Vollmer et al. 2001). Similar to with gravitational tidal fields, if the pericentre is small the ram pressure may increase and decrease very rapidly. This may occur so quickly that gas which is technically unbound by the ram pressure does not have time to be fully removed from the disk by the time that the ram pressure has decreased following the pericentre passage

(Roediger & Brüggén 2007). Such gas may then fall back onto the disk at later times under the action of gravity (Vollmer et al. 2001; Schulz & Struck 2001; Kapferer et al. 2009; Quilis et al. 2017).

Given the important role that R_{peri} plays in dictating the efficiency of environmental mechanisms in dense environments, it is important to understand what factors dictate R_{peri} ; these can be studied using simulations. There are many papers in the literature devoted to the study of the orbital parameters of infalling dark matter halos in cosmological simulations (e.g., Tormen 1997; Vitvitska et al. 2002; Benson 2005; Zentner et al. 2005; Wang et al. 2005; Khochfar & Burkert 2006; Libeskind et al. 2014; Shi et al. 2015; Jiang et al. 2015; Li et al. 2020; Benson 2021). Their results tend to support a picture in which the pericentres are expected to be smaller in higher mass hosts, or when infalling halos are more massive compared to their hosts, because the tangential component of their orbital motion when crossing into the host is lower. They also tend to find there is only a weak dependency on redshift, at least since redshift = 1 (Wetzel 2011; Li et al. 2020; Benson 2021). However, the majority of these studies rely on identifying the infallers at the moment they fall into the host and recording their orbital dynamics at that time, then extrapolating their future orbit and pericentre. This is typically accomplished assuming point masses for the host and infaller halo, or a fixed and often spherical potential for the cluster. Of course, this neglects the fact that the host halos are extended potentials with typically nonspherical and complex shapes that grow and evolve with time (Benson 2010). Furthermore, dynamical friction is generally neglected or approximated, and in most cases the resulting mass evolution of the satellite is not measured directly within the simulation.

In this paper, we attempt to overcome these limitations by directly measuring the R_{peri} of halos infalling into groups and clusters in a cosmological simulation. Rather than approximating their orbits inside the host, we self-consistently track the orbit of the infaller halo from before entering the cluster until passing first pericentre, using the merger tree of our dark-matter-only cosmological simulation. As a result, our R_{peri} measurements naturally include the effect of the extended density distribution, shape, and time evolution of the cluster potential, and dynamical friction naturally arises between the infaller halo and its host. By measuring the evolving mass of the halo as we track it throughout its first infall, we can also directly measure how R_{peri} impacts on the strength of tidal mass loss. Finally, because some halos will enter the cluster as members of groups in our cosmological simulation, their tangential velocities may be increased by the peculiar motions within the group (Li et al. 2020) potentially increasing R_{peri} . On the other hand, the stronger dynamical friction that a massive group experiences could also tend to drag group members that remain bound to their group down to smaller R_{peri} values (Choque-Challapa et al. 2019) which, thanks to our approach, is an effect that will be captured and could influence the resulting R_{peri} values we measure.

Using our simulations, we are able to study how the peculiar motions of infaller halos that are inherited from large-scale dynamics outside of the cluster (i.e., an external effect), combined with dynamical friction operating inside the cluster (i.e., an internal effect) combine to dictate the R_{peri} value, and we will show how this, in turn, impacts on the tidal mass loss suffered by the halo.

This article is presented as follows. In Section 2 we describe the simulations and methodology, in Section 3 we present our results, and in Section 4 we summarize and conclude.

2. Method

For this study, we analyze a dark-matter-only cosmological simulation. Our cosmological initial conditions were built for an initial redshift = 200, using the Multi Scale Initial Condition software (MUSIC; Hahn & Abel 2011). The simulated volume is a cube with a $120 \text{ Mpc } h^{-1}$ side length. Each dark matter particle has a mass $1.072 \times 10^9 M_{\odot} h^{-1}$. We evolve the initial conditions down to redshift = 0, using GADGET-3 (Springel et al. 2001). The following cosmological parameters are assumed: $\Omega_m = 0.3$, $\Omega_{\Lambda} = 0.7$, $\Omega_b = 0.047$, and $h_0 = 0.684$. We output snapshots $\sim 100 \text{ Myr}$ apart. These frequent outputs are useful for building merger trees and accurately tracing out the orbits of halos. With this output frequency, we can typically recover the true pericentre to within a few kiloparsecs (see Appendix B, Figure B1).

We run the ROCKSTAR halo finder to identify halos (Behroozi et al. 2013). This uses a six-dimensional phase space hierarchical Friends-of-Friends (FoF) algorithm to better identify satellites in host halos than is possible with a three-dimensional FoF approach. We include halos down to 20 dark matter particles, meaning our minimum halo mass is $2 \times 10^{10} M_{\odot} h^{-1}$. However, we take a cut for halos whose infall mass is less than $1 \times 10^{11} M_{\odot} h^{-1}$ to ensure we can track the tidal mass loss of halos down to $\sim 20\%$ of their infall mass. The peak of the density is used to define the center of a halo. The merger tree is built with CONSISTENT TREES (Behroozi et al. 2013), which combines particle IDs with halo trajectory information to improve the linking of halos between snapshots.

At $z=0$, there are 44 central halos with cluster masses ($M_{200} > 10^{14} M_{\odot} h^{-1}$) and 692 central halos with group masses ($10^{13} < M_{200} (M_{\odot} h^{-1}) < 10^{14}$) in the full $120 \text{ Mpc } h^{-1}$ simulation volume. We refer to these cluster and group halos as the “host halos.” The spatial distribution of the host halos within the $120 \text{ Mpc } h^{-1}$ cosmological box is shown in the center panel of Figure 1. We track the trajectories of all halos that fall into these hosts (i.e., cross the R_{200} of the host halo, measured at the time of infall), which gives us a sample of 65,640 halos from which we further subsample. The blue lines show the trajectories of all the infaller halos in four representative clusters, as shown in the subpanels of Figure 1. The final $z=0$ position of the cluster halo is shown as a deep-pink sphere, and it is clear that the infaller halo trajectories are highly nonisotropic, with a preference for particular infall directions as a result of filament feeding. In this study, we limit ourselves to consider only infaller halos that have at least one pericentre, which gives us a sample of 42,353 halos, which we refer to as the “infaller halos.” Some of these survive until $z=0$ ($\sim 16,000$ halos) and the rest are destroyed inside their host halos. If we define the host by their $z=0$ mass, $\sim 11,000$ of all the infallers fall into clusters ($M_{200}(z=0) > 10^{14} M_{\odot}$), and $\sim 31,500$ of the infallers fall into groups ($M_{200}(z=0) = 10^{13} - 10^{14} M_{\odot}$).

We measure a number of properties of the infaller halos at the instant that they cross their host halo’s R_{200} for the first time. These include infaller halo mass (M_{inf}), host mass (M_{host}), the mass ratio of the two ($M_{\text{rat}} = M_{\text{inf}}/M_{\text{host}}$), and the time at which the halo entered the host (t_{inf}). To measure the strength of the peculiar motions of infallers, we also measure the perpendicular component of the orbital velocity normalized by

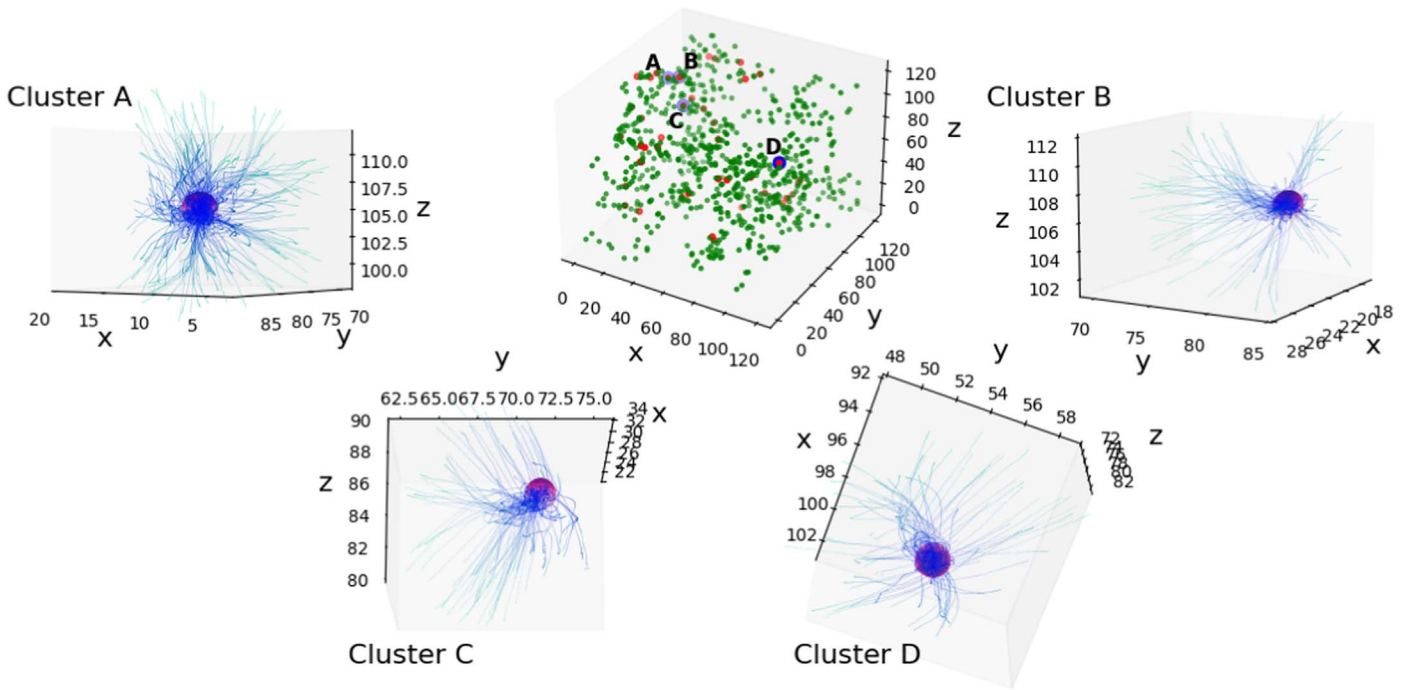


Figure 1. Central panel: 120 Mpc h^{-1} cosmological box of clusters (red symbols) and groups (green symbols). Blue points indicate zoomed-in clusters (labeled “A”–“D”). Surrounding panels: zoom-in of four representative clusters (labeled “Cluster A–D”) with a deep-pink sphere indicating their $z = 0$ position (size equal to the cluster R_{200}). Blue lines indicate the orbital trajectories for all their infallers, colored darker blue according to proximity to the final cluster position.

the host velocity dispersion (V_{\perp}), also measured at the moment of infall. Finally, we also test if the infaller halo is falling into the host in isolation or as part of a larger substructure such as a group and, if so, we record the mass of the group.

After the halos have entered the host, we track the evolution of the halo’s orbit until they reach their first pericentre (at t_{peri}), when we record the normalized pericentre distance (R_{peri}) as the minimum three-dimensional separation between the infaller halo’s center and the host’s center, normalized by the host’s R_{200} . We also track the mass evolution of the infaller halo, normalized by its mass at the time of infall.

3. Results

3.1. The Total R_{peri} Distribution

We begin by looking at the total distribution of R_{peri} for all of the sample of infallers that reach pericentre, as shown by the teal filled histogram in Figure 2. The distribution peaks at $R_{\text{peri}} = 0.26$ (note: R_{peri} is normalized by the host R_{200} at the time of pericentre). The first quartile, median, and third quartile of the distribution are $R_{\text{peri}} = 0.22, 0.35,$ and $0.52,$ respectively (see small vertical lines on x -axis). We compare our distribution to the total R_{peri} distribution from Wetzel (2011; the blue and magenta line). The blue line shows the results obtained when the cluster potential was treated as a point mass. The magenta line shows the result when instead an extended analytical potential was applied for the cluster potential. Clearly the extended analytical potential for the cluster is a closer match to our result as both histograms have a peak and the numbers fall as R_{peri} approaches zero, unlike in the point-mass treatment of the cluster. However, there are still differences, with our distribution preferring slightly larger values of R_{peri} , perhaps because our infallers orbit in the true cluster potential rather than being approximated by an analytical potential.

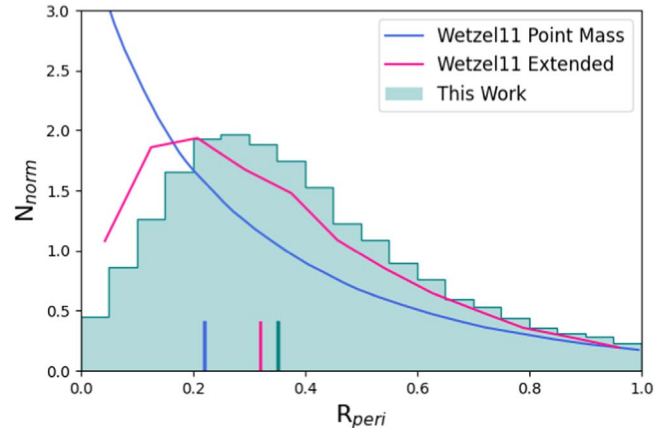


Figure 2. The main R_{peri} distribution (teal filled) for all the infaller sample. The lines are from Wetzel (2011). The blue curve is the result when the cluster potential was treated as a point mass. The magenta curve is the result when an analytical extended host potential was used. The small vertical lines along the x -axis indicate the median value of the three distributions in the legend.

3.2. R_{peri} Controls Tidal Mass Loss

In Figure 3, we illustrate the importance of the R_{peri} value for tidal mass loss of infallers after entering the host. In the plots, we stack the individual mass evolution tracks of infaller halos from the moment of their infall into the host halo. Therefore, a single halo contributes multiple data points to the plot in the form of a track, and the color is darker where multiple tracks overlap. The y -axis is normalized by the mass at infall time, thus all halos start their track when they first enter the host at $y = 1$. We plot $t - t_{\text{peri}}$ on the x -axis, meaning the x -axis is 0 at the moment of pericentre. This is chosen for a reason. As can be seen, initially most halos lie on the dark, nearly horizontal strip until they reach pericentre. This means typically they do not lose much mass throughout their first infall until they are

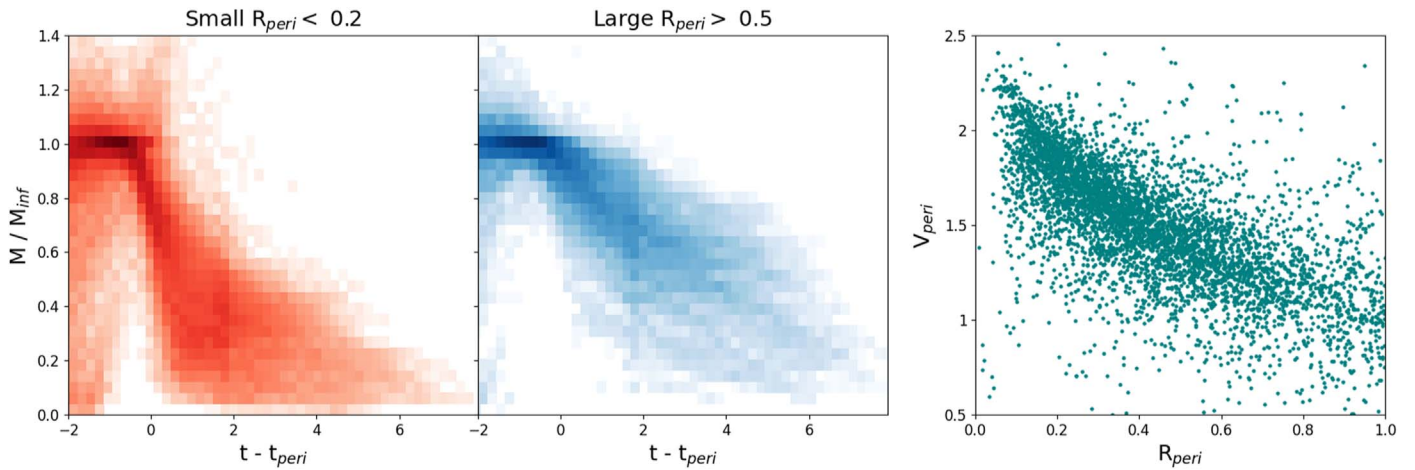


Figure 3. Tidal mass loss of infaller halos with small pericentres ($R_{\text{peri}} < 0.2$; left panel) and large pericentres ($R_{\text{peri}} > 0.5$; center panel). The y-axis is the halo mass of the infaller normalized by its mass at the time of infall. The x-axis is time since pericentre passage in gigayears, with negative x-values being before the infaller reaches pericentre. Halos with small R_{peri} values suffer stronger and more rapid tidal mass loss. Right panel: orbital velocity at pericentre normalized by host velocity dispersion (V_{peri}) vs. R_{peri} . Halos with smaller pericentres tend to have higher normalized pericentre velocities.

close to pericentre, and then mass loss begins suddenly. Similar results can also be found in Knebe et al. (2011) and Behroozi et al. (2014). Thus, by plotting $t - t_{\text{peri}}$ on the x-axis, we better align the mass evolution tracks in the stack.

We split the infaller sample into “small R_{peri} ” ($R_{\text{peri}} < 0.2$; left panel) and “large R_{peri} ” ($R_{\text{peri}} > 0.5$; center panel) subsamples, in order to compare their mass evolution. The limiting values of R_{peri} for these two subsamples are chosen to give two extremes, in order to better illustrate the R_{peri} dependency. By eye, the mass evolution appears sensitive to the R_{peri} value, with smaller R_{peri} producing stronger and more rapid tidal mass loss. We quantified this result by measuring the percentage of infaller halos that suffer strong tidal mass (defined as $M/M_{\text{inf}} < 0.4$) by 2 Gyr after pericentre. For $R_{\text{peri}} < 0.2$, 60.2% suffer strong tidal mass loss compared to only 13.1% for $R_{\text{peri}} > 0.5$. Physically, this is simple to understand as smaller pericentres take the infaller deeper into the host’s potential where tides are stronger, and where more high-speed encounters with cluster members occur (Smith et al. 2010).

However, we note that the efficiency of nongravitational environmental effects is likely also a sensitive function of pericentre distance. Ram-pressure strength depends on the density of the ICM times the galaxy velocity through that ICM (Gunn & Gott 1972). Although we do not model ram-pressure stripping directly here (these are dark-matter-only simulations), we can expect that halos with smaller pericentres would reach higher peak densities of the ICM. Also, as shown in the right panel of Figure 3, orbits with smaller pericentres result in higher peak velocities. Thus, a combination of denser ICM and higher orbital velocities for halos with smaller pericentres should cause stronger peak ram pressures (Roediger & Brüggén 2007).

3.3. What Dictates R_{peri} ?

As the pericentre distance has proved important for the strength of environmental mechanisms acting in clusters and groups, we now turn our attention to what processes dictate the value of R_{peri} . Physically, these can be broadly split into external processes (e.g., the peculiar motions of halos, inherited from their dynamics within the large-scale structure beyond the cluster) and internal processes (e.g., dynamical friction) operating within the cluster.

3.3.1. Peculiar Motions versus Dynamical Friction

When an infaller halo crosses the R_{200} of the host halo for the first time, we measure the perpendicular component of its velocity with respect to a radial line between the host center and the infaller. We normalize the velocity by the host halo’s velocity dispersion. The normalized perpendicular velocity is referred to as V_{\perp} .

V_{\perp} is expected to influence R_{peri} , as illustrated in the cartoon schematic in the left panel of Figure 4. Higher V_{\perp} values should result in increased R_{peri} .

In the right panel of Figure 4, we show a scatter plot of R_{peri} versus V_{\perp} for all of the sample that fell into their hosts since $z = 2$ (teal points; labeled “All” in the legend). There is a clear correlation between the two parameters, as predicted. We chose infallers since $z = 2$ so that the trend can be more clearly seen as for very early infallers the scatter increases (as we will show below). By eye, we fit the black smooth curve to the trend (the equation of the fit is given in the figure caption) for use later in Section 3.3.2. Although by eye the scatter in the teal points appears quite large, the black contour contains 95% of the “All” sample. Thus, the great majority of the points are found within $R_{\text{peri}} = \pm 0.1$ of the fit to the trend. We emphasize that, as V_{\perp} is measured when the halo enters the cluster for the first time, this highlights the crucial role the peculiar motions of halos has on environmental effects occurring deep inside the cluster itself, motions that are inherited from the dynamics of the large-scale structure, far beyond the cluster outskirts.

The red points in the right panel of Figure 4 indicate a subsample where the host halo has a cluster mass ($M_{200} > 10^{14} M_{\odot}$) at the time of the infall. The cluster-mass subsample sits on the same trend as the “All” sample, indicating that the normalization of the y- and x-axes by the host virial radius and velocity dispersion respectively, effectively removes any dependence on host mass. Although the scatter in the trend is small (95% of the “All” sample is found between the black contours), we tried to understand the primary cause of the scatter. We tested if the concentration of the host was a factor but did not see a clear dependency. Instead, we found that the majority of the scatter could be explained by a dependency on how much of a halo’s orbital motion is radial at the moment of infall. Halos with stronger

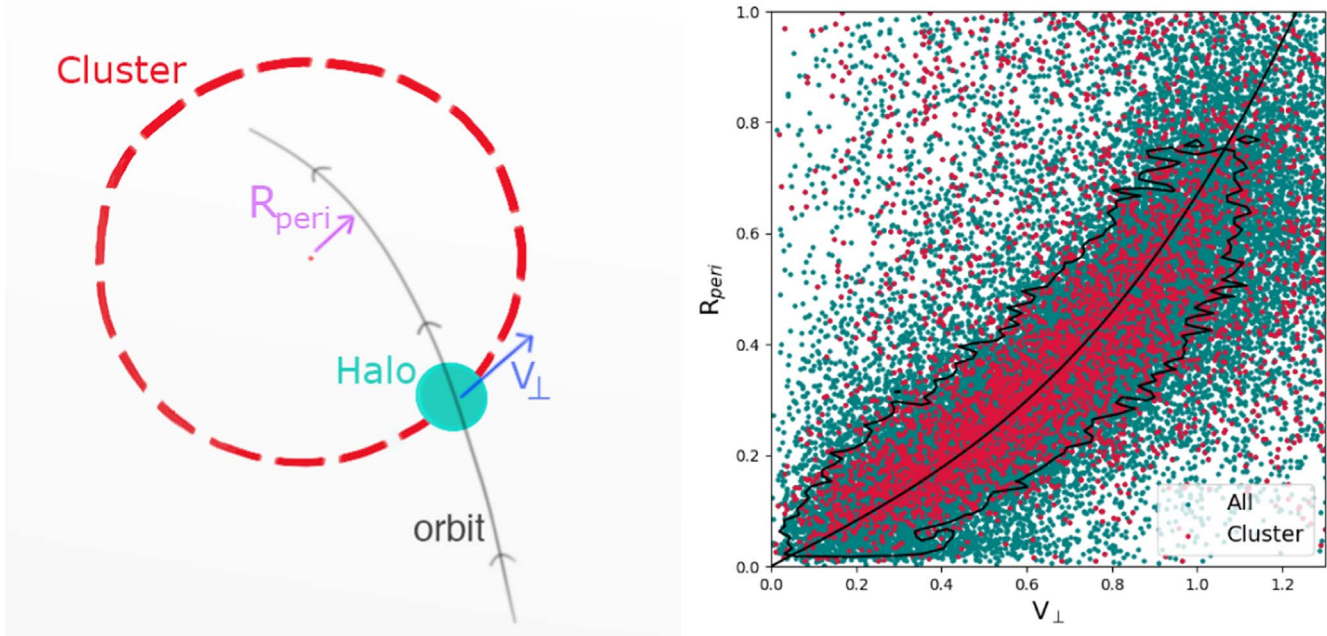


Figure 4. Left: cartoon schematic illustrating how increasing V_{\perp} results in increased R_{peri} . The red dashed circle is the cluster R_{200} . The cyan filled circle is an infaller halo at the moment of entering the cluster. The blue arrow labeled “ V_{\perp} ” shows the perpendicular component of the halo’s orbital velocity. Right: R_{peri} vs. V_{\perp} plot (normalized axes) for the full sample (teal) and for cluster-mass hosts only (red). There is a clear trend, which is independent of host mass. The smooth black curve is an approximate fit to the trend ($R_{\text{peri}} = 0.27V_{\perp}^3 + 0.40 V_{\perp}$), which we apply in Section 3.3.2. The scatter about the trend is small. The black contour contains 95% of the “All” sample, meaning most objects are found within ± 0.1 of the fit line.

radial motions tend to have smaller R_{peri} for a fixed value of V_{\perp} and vice versa.

The importance of V_{\perp} for deciding the shape of the R_{peri} distribution is further highlighted in Figure 5. Here we split all of the infallers that fell into hosts since $z = 2$ (to reduce scatter, as we will show below) into subsamples by host mass, infaller mass, infaller-to-host-mass ratio, and time of infall (from upper left to bottom right, respectively). The main panel shows R_{peri} versus V_{\perp} with a contour containing 68% of the data points. The upper histogram shows the corresponding V_{\perp} distribution, and the histogram on the right shows the R_{peri} distributions, with small lines indicating the medians of the distributions.

A trend between R_{peri} and V_{\perp} is visible in all the subsamples, although the location of the trend and, in particular, the location of halos on the trend differs between the subsamples. For host mass (upper left), the trend is very similar, and the resulting distributions are thus similar too. In the upper-right and lower-left panels, the subsamples seem to roughly follow the same trend, but they are not distributed equally along it. Higher-mass infallers and higher-mass-ratio infallers tend to have lower V_{\perp} values. As a result of adhering to an $R_{\text{peri}}-V_{\perp}$ trend, they end up with lower R_{peri} values, too, and thus the V_{\perp} and R_{peri} distributions show similar dependencies on each parameter.

In addition, a small vertical offset in the trend appears for high-mass infallers, and for infallers with a mass ratio > 0.1 . This means that, at a fixed V_{\perp} , R_{peri} is reduced. Neither the high-mass infallers or high-mass-ratio infallers had higher fractions of their motion radially, therefore we ruled this out as a factor. Instead, this is a key indicator of dynamical friction, which acts to remove orbital energy from the infaller and shrink the radius of the orbit. Dynamical friction becomes quite ineffective when the infaller mass is less than a few percent of the host mass (Boylan-Kolchin et al. 2008). Indeed, for the first

infallers that we consider in this study, the dynamical friction can only act for a limited time, since the infaller halo enters the cluster until it reaches first pericentre, further reducing its impact on the infaller orbit. As a result, the reduction in R_{peri} is quite weak (< 0.1) in both the upper-right and lower-left panels, even when we have selected quite extreme infaller masses (only 5% of infallers have $M_{\text{inf}} > 0.1$) or mass ratios (only 4% of infallers have $M_{\text{rat}} > 0.1$).

Finally, in the lower-right panel we see that early infallers (infall redshift $z > 2$) show a more scattered trend. The data points cannot scatter below $R_{\text{peri}} = 0$, thus only the scatter upwards, above the trend is visible in the contours. However, this increased scatter is only visible at early times, and for most of the age of the universe (over the last ~ 10 Gyr, which includes 90% of infallers), there is a well-defined sequence between R_{peri} and V_{\perp} .

In summary, we find that, in most cases, V_{\perp} is the dominant parameter controlling the R_{peri} distribution, including its dependence on other parameters such as host mass, infaller mass, mass ratio, or time of infall. Dynamical friction can impact R_{peri} alongside the effects from V_{\perp} , but only for the upper few percent of the most massive infallers or highest mass ratios. Even for these extreme samples the distribution of V_{\perp} plays an important role.

3.3.2. Infall Time and Mass Ratio

In the top-left panel of Figure 6, we attempt to visualize how the median R_{peri} value (shown by the color of a pixel) changes as a function of both infall time (y-axis, measured in terms of the age of the universe at that moment in gigayears) and mass ratio at that infall time (x-axis) using a pixelated grid of the median R_{peri} of all halos that fall within a pixel.

There is a general horizontal gradient for $R_{\text{peri,All}}$ to decrease as the mass ratio increases. The fact that the gradient is predominantly horizontal indicates that there is only a weak

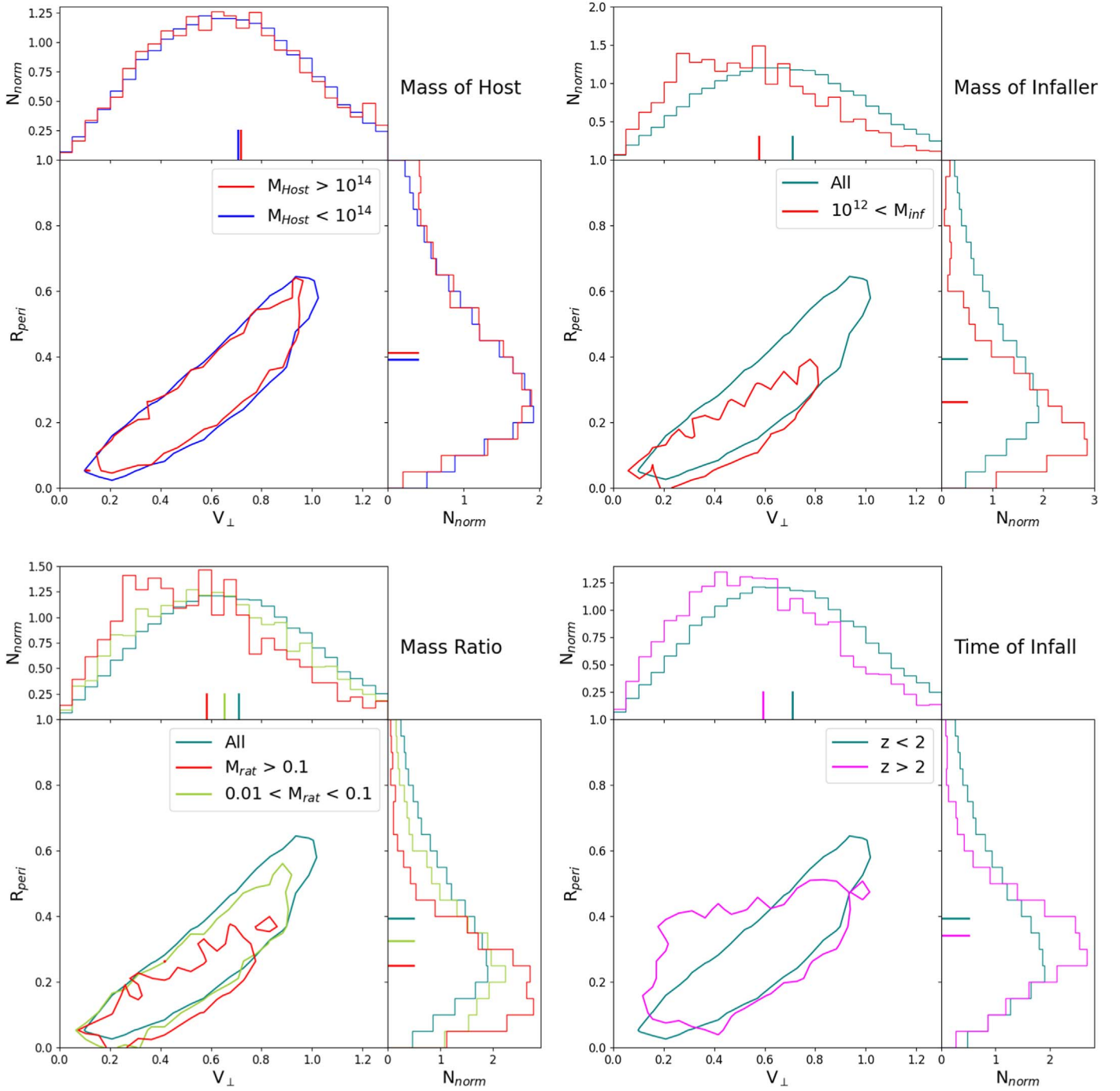


Figure 5. Plots illustrating the relation between R_{peri} and V_{\perp} . The main panel is R_{peri} vs. V_{\perp} , and the contour encompasses 68% of the data points. The upper histogram shows the normalized V_{\perp} distribution (a vertical integration of the R_{peri} vs. V_{\perp} plot) and the side panel shows the normalized R_{peri} distribution (a horizontal integration of the R_{peri} vs. V_{\perp} plot). We subsample by various parameters: in the upper left we split by host mass, upper right by mass of the infaller halo, bottom left by the mass ratio of the infaller to the host, and lower right by the time of infall (see legend for line colors). A short line on the histogram axis indicates the median value for each distribution.

dependency on the time of infall, at least over the last ~ 10 Gyr, as seen in other recent studies (Li et al. 2020; Benson 2021). This horizontal gradient exists even when the mass ratio is very small (mass ratios $\sim 10^{-4}$ up to 0.01) when dynamical friction is expected to be negligible. In this low-mass-ratio regime, where the majority of the halos are located (see black contours), the $R_{\text{peri,All}}$ is accompanied by a similar gradient in V_{\perp} (see top-right panel). This suggests that the $R_{\text{peri,All}}$ gradient is actually due to a dependency of V_{\perp} on the mass ratio, for the majority of the halos (in agreement with Li et al. 2020). We note that

because V_{\perp} is measured at the time of infall, this dependency on mass ratio must have been already set beyond the cluster, within the surrounding large-scale structure.

To attempt to see how V_{\perp} alone drives the dependency of $R_{\text{peri,All}}$ on the mass ratio, we analytically calculate R_{peri} using the fit equation from the right panel of Figure 4 (shown as a black curve in that figure). By inserting the measured V_{\perp} value in the simulation into the fit equation, we get the analytically calculated $R_{\text{peri,fit}}$ value. We note that by doing this the scatter about the trend will be collapsed onto the median line. But in

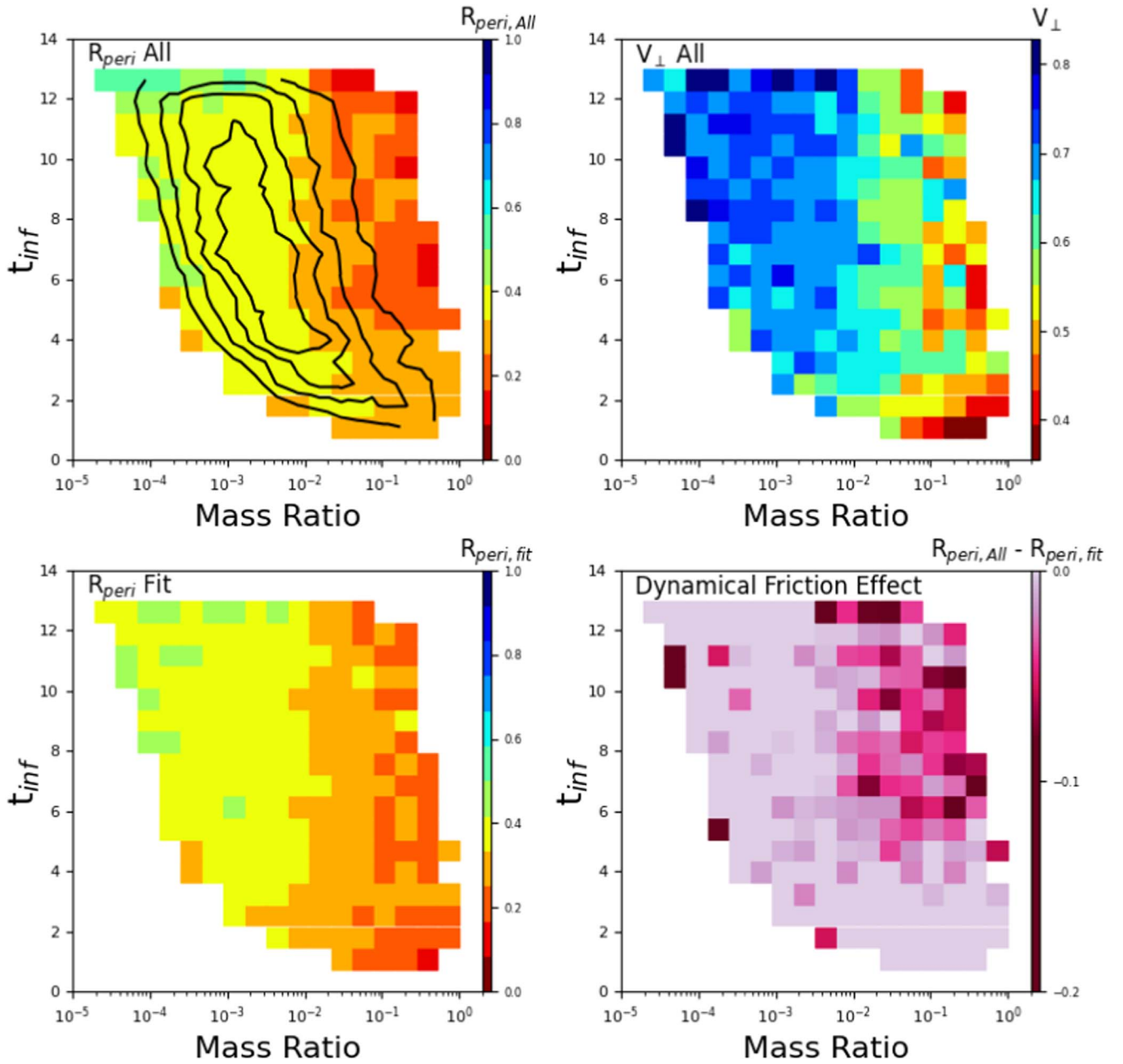


Figure 6. Age of the universe in gigayears at the time of infall (t_{inf}) vs. mass ratio plots. Top left: pixels are colored by the median R_{peri} of halos that fall within them. Black contours indicate 100, 200, 300, and 400 objects in a pixel. Top right: pixels are colored by median V_{\perp} . Bottom left: pixels are colored by the R_{peri} value that would be expected if dynamical friction were heavily suppressed (see text for details). R_{peri} values are based only on the median V_{\perp} value, using the fit line from the right panel of Figure 4 (see text for details). Bottom right: pixel-by-pixel subtraction of the upper-left and lower-left panels to show how much the measured R_{peri} values reduce compared to those when dynamical friction is heavily suppressed in the sample. Pixels are blank if they contain fewer than 20 halos.

this way we ensure that the median value of the R_{peri} is conserved for a measured V_{\perp} value. The impact of dynamical friction on this fit line can be assumed to be heavily suppressed. This is because the sample is heavily dominated by objects with mass ratios below 0.01, for which simulations have shown that dynamical friction has a negligible impact on their first pericenter distance (Lacey & Cole 1993; van den Bosch et al. 1999; Jiang et al. 2008; McCavana et al. 2012; Boylan-Kolchin et al. 2008; Villalobos et al. 2013). To go further, we also tried remaking the V_{\perp} versus R_{peri} trend with a sample of objects whose mass ratios are restricted to be below 0.01, meaning dynamical friction will be weak. We found that the trend changes negligibly, which further confirms that the effects of

dynamical friction on the fit line can be considered strongly suppressed.

The result, shown in the lower-left panel, is a reasonable match to the horizontal gradient shown by $R_{\text{peri, All}}$ for mass ratios from $\sim 10^{-4}$ up to 0.01 where most halos are found. This further supports that it is the dependency of V_{\perp} on mass ratio that causes $R_{\text{peri, All}}$ to also depend on mass ratio for the majority of the halos.

However, it can be seen that simply using the fitted R_{\perp} dependency on V_{\perp} does not reproduce the small median R_{peri} values where the mass ratio is > 0.1 (i.e., the red pixels found on the right in the upper-left panel). At these mass ratios, dynamical friction begins to play a role as well (as we saw in

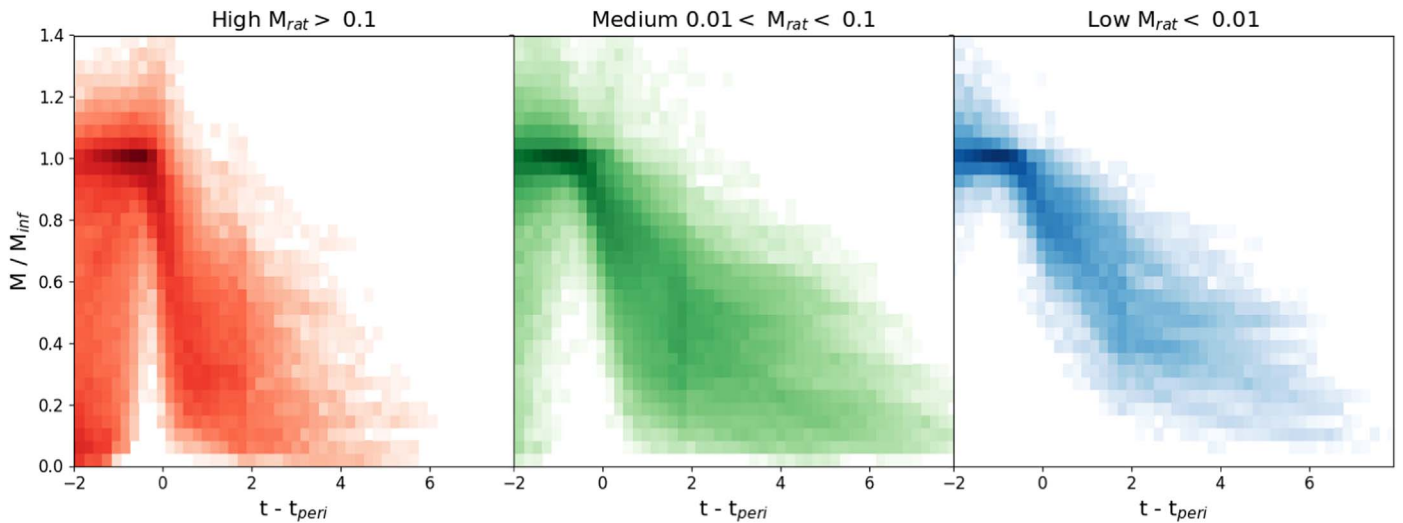


Figure 7. Evolution of infaller halo masses (normalized by halo mass at infall time) plotted against time since pericentre passage in gigayears. Halos with higher mass ratios ($M_{\text{rat}} = M_{\text{inf}}/M_{\text{host}}$) suffer more rapid tidal mass loss near pericentre, due to the dependency of V_{\perp} on mass ratio, combined with dynamical friction for objects with $M_{\text{rat}} > 0.1$.

the lower-left panel of Figure 5), further reducing the R_{peri} value. In the lower-right panel, we attempt to isolate this effect by subtracting, pixel-by-pixel, the lower-left panel from the upper-left panel ($R_{\text{peri,All}} - R_{\text{peri,fit}}$). In this way, we can directly see how much smaller the R_{peri} values become when compared to a sample of halos in which dynamical friction is heavily suppressed due to being dominated by low-mass-ratio halos. We find that the additional dynamical friction at these higher mass ratios typically reduces $R_{\text{peri,All}}$ by less than 10% and only for infaller halos which are $>5\%$ – 10% of their host mass, consistent with what we see in the lower-left panel of Figure 5.

In summary, these results reveal that the dependency of V_{\perp} on mass ratio drives $R_{\text{peri,All}}$ to have the same dependency. When the mass ratio becomes very high ($>5\%$ – 10%) dynamical friction further reduces $R_{\text{peri,All}}$. Thus the mass ratio plays a key role on $R_{\text{peri,All}}$. We note that in the top-left panel of Figure 6 there is not a clear gradient of $R_{\text{peri,All}}$ in the vertical direction, meaning $R_{\text{peri,All}}$ does not depend strongly on infall time. This is at first sight confusing as, when we split the sample by infall time, the R_{peri} distribution changed (see lower-right panel of Figure 5). However, the black contours in the upper-left panel of Figure 6 show the halos are not distributed uniformly across the grid, and with earlier infalls the mass ratio becomes typically higher. Thus, it is in fact a dependency on mass ratio that drives the observed change in R_{peri} distributions with infall time.

Similarly, the dependency on infaller mass that is seen in the upper-right panel of Figure 5 can also be shown to be a result of the mass ratio. We tested this by separating the sample into high- and low-infaller-mass samples, and replotting them (see Appendix A, Figure A1). The choice of infaller mass causes us to sample different regions of the grid. For example, a high-infaller-mass subsample tends to fall in higher-mass-ratio pixels, which have small $R_{\text{peri,All}}$ values. Thus, like with the infall time, there is little direct dependence of R_{peri} on infaller mass, except through its impact on the mass ratio, which is the more fundamental quantity dictating R_{peri} .

In Figure 7, we directly demonstrate the impact of the mass ratio for tidal mass loss inside hosts. The three panels show the mass evolution of infaller halos, presented in the same way as in Figure 3 (normalized at their infall time, against time since

pericentre) for high-, medium-, and low-mass-ratio subsamples (see subtitles). By eye, the rate of tidal mass loss near pericentre is clearly a function of the mass ratio, due to R_{peri} depending on the mass ratio. We quantified this result by measuring the percentage of infaller halos that suffer strong tidal mass (defined as $M/M_{\text{inf}} < 0.4$) by 2 Gyr after pericentre. For high-, medium-, and low-mass-ratio infallers, 59.3%, 37.5%, and 25.7% suffer strong tidal mass loss, respectively. Thus, contrary to intuition, it is halos that are more massive with respect to their host that suffer more rapid tidal mass loss, due to infallers with a high mass ratio having reduced values of V_{\perp} , and additionally a further reduction in R_{peri} by dynamical friction when the mass ratio is >0.1 . Thus, through a combination of both internal and external effects to the cluster, the mass ratio plays a key role on the efficiency of tidal mass loss in dense environments, with external effects dominating for low-mass-ratio infallers ($M_{\text{rat}} < 0.01$) that dominate by number.

3.3.3. Group Infallers

In this section, we consider if halos that fall into cluster-mass hosts as members of groups have different R_{peri} distributions than those that fall into their hosts in isolation. When each infaller halo first crosses the R_{200} of its host halo, we check to see if it is bound to any other halo that is more massive than the infaller halo (e.g., a group halo). If so, we label this halo as a “group infaller” and record the mass of the group halo (M_{grp}). If not, we label this halo as an “isolated infaller”. We then record the resulting pericentre distances of the infaller halos and check to see if group membership alters their R_{peri} distributions significantly.

In Figure 8, we split our group infaller sample up by the group-to-cluster mass ratio measured at the time of infall into the cluster (see panel legends from left to right). The distribution of the isolated infallers (shown in gray) is the same in all the panels for the purposes of comparison. All histograms are normalized by area.

Overall, the R_{peri} distributions are not strongly affected by group membership. In Li et al. (2020) it was proposed that lower-subhalos might have higher tangential velocities (and

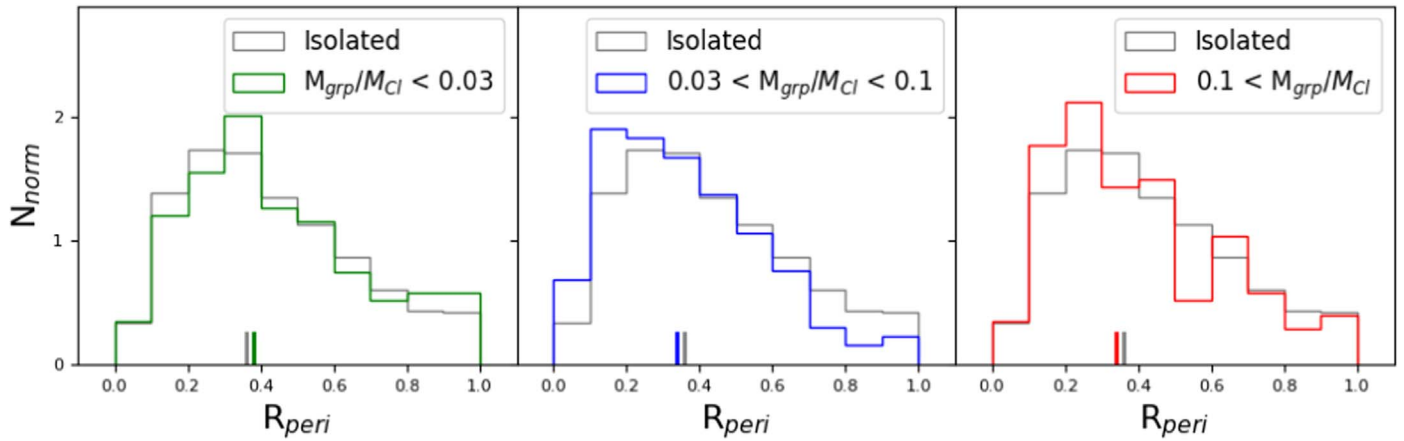


Figure 8. R_{peri} distributions of all isolated infallers (gray histograms, same in all the panels for comparison), and infallers that are in a group when they enter the cluster. Left to right, the panels show substructures that have a low, medium, and high mass ratio with the cluster. The small vertical lines on the x -axes indicate the medians of the distributions.

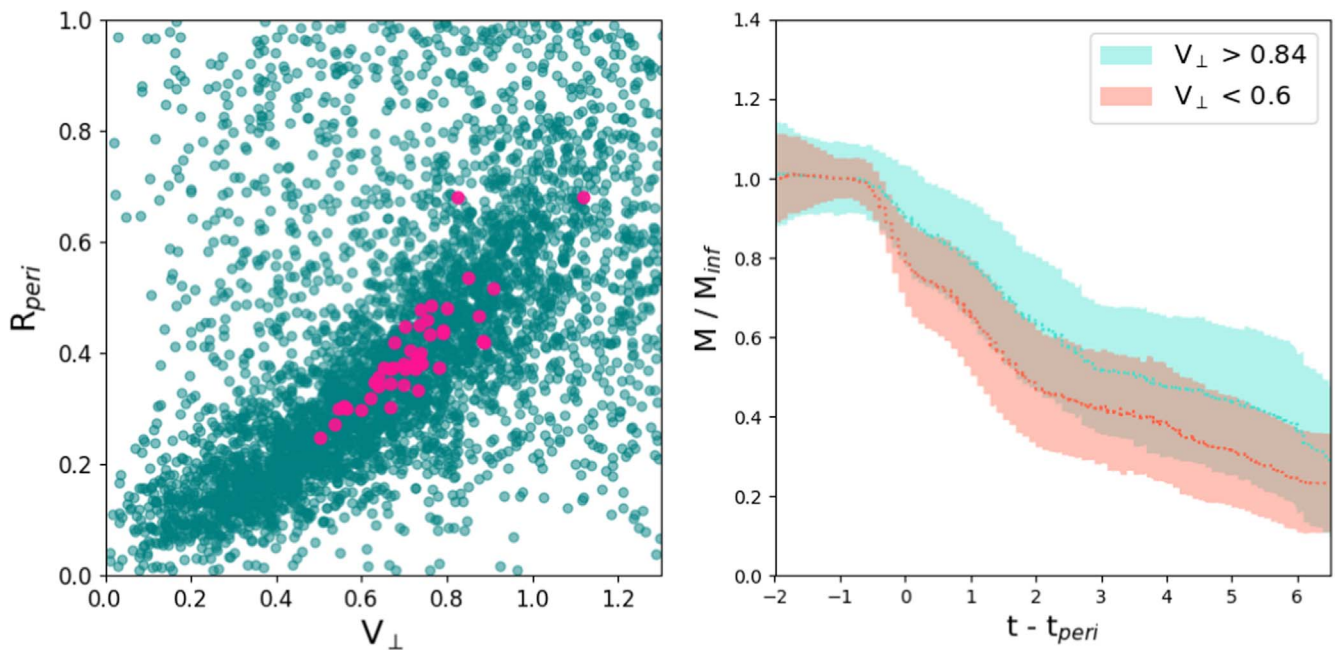


Figure 9. Left: cluster-to-cluster variations in the R_{peri} vs. V_{perp} plot. Magenta symbols are the median R_{peri} and V_{perp} values for the first infallers into each individual cluster (i.e., one symbol per cluster). Teal symbols are all the individual first infallers into clusters (not split by cluster host). Right: mass evolution of infallers, normalized by mass at infall time for the six clusters with the highest median V_{perp} value (red line; labeled “ $V_{\text{perp}} < 0.6$ ”), and the six clusters with the lowest median V_{perp} value (blue line; labeled “ $V_{\text{perp}} > 0.84$ ”). The bold line is the median mass evolution track, and shading shows the standard deviation.

thus larger pericentres) as they are more easily perturbed by their proximity to the massive group halo. However, it seems there are likely two competing effects. It is true that halos that infall in groups have their own peculiar motions within the potential well of the group that may scatter their V_{\perp} values. But, counteracting this effect, dynamical friction acting on the group halo would tend to reduce R_{peri} for the group halo itself, and any group satellites that remain bound to the group halo could potentially be dragged down with it (Choque-Challapa et al. 2019). In any case, we find that group membership does not play an important role on the first pericentre distances of first infallers within clusters.

3.4. Cluster-to-cluster Variations

To test for variations between hosts, we split our sample of $z=0$ infallers into clusters by which host they fall into. For

each individual host cluster, we calculate the median value of V_{\perp} measured as they first cross the host’s R_{200} and, after they reach pericentre, their median value of R_{peri} .

The magenta symbols in the left panel of Figure 9 show the medians for the individual clusters, while the teal symbols show all the individual cluster infallers (i.e., not split by cluster host). It is clear that the median values of individual clusters follow a similar trend to the general trend of the individual infallers. Thus, between clusters, there is some variation in the typical V_{\perp} value which in turn results in variation in their typical R_{peri} values.

We confirmed that clusters with smaller median V_{\perp} values indeed cause more rapid tidal mass loss. To do this, we select two subsamples of the clusters, each consisting six of the clusters with the highest and lowest median V_{\perp} values. The mass evolution of the halos after falling into the cluster,

normalized by their mass at infall time, is shown in the panel on the right. The clusters with typically lower V_{\perp} (red line), and consequently smaller R_{peri} , suffer stronger and more rapid tidal mass loss than those with larger V_{\perp} (blue line). These results highlight that, even if clusters are similar in terms of their mass and/or internal tidal field, they may differ in their efficiency to cause tidal mass loss, and likely other environmental effects, as well, as a result of differing peculiar motions inherited from the large-scale surroundings.

This result also opens up the possibility that, in principle, it might be possible to observe the dynamics of first infallers in real clusters and gain insight into the strength of environmental effects acting near their centers. However, observationally measuring V_{\perp} values is not trivial. Halos enter clusters with both a radial and tangential velocity component that may be difficult to separate cleanly with a single line of sight. We attempt to resolve this by searching for correlation between the median V_{\perp} and the standard deviation of the Cartesian velocity vectors V_x , V_y , and V_z , measured in the cluster frame of reference at the moment of infall. We find a statistically significant correlation (Spearman’s rank correlation coefficient $r_s = 0.40$, $p = 0.005$) for smaller standard deviations to result in lower V_{\perp} . However, practically speaking, the correlation is not sufficiently strong to cleanly distinguish between low- and high- V_{\perp} clusters.

To add to the observational challenge, our median V_{\perp} measurement is accumulated over time, as each halo enters the virial radius for the first time. However, at any instant in time there will be a mixture of first infallers and backsplash halos at R_{200} , and observationally it may be difficult to cleanly separate the two populations. We tried testing if the median V_{\perp} measurement correlated with the velocity dispersion in the x , y , and z directions of all halos within a spherical shell of $1-2 R_{200}$ and $2-3 R_{200}$, when all are measured at a fixed time ($z = 0$). However, in this case we found no statistically significant correlation. We also tried correlating the median V_{\perp} measurement with the average infall time of halos, and with the local number density in the outskirts of the clusters, but again found little correlation. Thus, while a correlation between median V_{\perp} and R_{peri} could potentially provide a useful tool for understanding environmental effects in dense environments, some additional development is first required that is beyond the scope of this current study.

3.5. Filament Feeding

So far, we have seen clear evidence for the important role played by V_{\perp} in dictating the value of R_{peri} measurements of the majority of infaller halos, which in turn affects the amount of tidal mass loss they suffer too. In this section, we now consider how the large-scale structure surrounding the cluster can influence the measured V_{\perp} values.

In Figure 10, we present four representative examples of clusters (shown top row to bottom; dark pink spheres are the $z = 0$ cluster halo with radius of R_{200}). Blue lines show the trajectories of infaller halos, colored darker blue according to their proximity to the cluster. The left panels show all the trajectories of infaller halos (column labeled “All Tracks”). From these trajectories, we produce a subsample of the lowest and highest V_{\perp} values (columns labeled “Lo V_{\perp} ” and “Hi V_{\perp} ,” respectively), typically divided at a V_{\perp} value of ~ 0.7 , but with small adjustments made to ensure the two subsamples are of equal size so they can be fairly compared visually.

In the “All Tracks” panels (left column), we can best see how the cluster is preferentially fed from particular directions. There is typically one dominant direction in these examples, but the second row (“Cluster B”) clearly shows preferential feeding from three additional more minor filaments, and the top row (“Cluster A”) shows at least five equally significant filaments are feeding the cluster. It is notable that if we compare the low- and high- V_{\perp} panels (center and right columns), the primary filaments feeding the clusters are more clearly traced out by the low- V_{\perp} panels. This means that halos with low V_{\perp} values preferentially enter the cluster along filaments that feed the cluster. In comparison, the high- V_{\perp} trajectories tend to join the filaments or cluster from directions that are more perpendicular to the filaments—see, for example, the high- V_{\perp} panel of the third row (“Cluster C”). These trajectories that join the filaments perpendicularly are reminiscent of halos moving along walls before joining the filaments.

However, we note that the results are not clear cut. The trajectories in Figure 10 show that some halos that are not associated with filaments have low- V_{\perp} orbits, and often halos associated with filaments enter their cluster with high V_{\perp} values. Therefore, whether the halos are in filaments is not the only deciding factor. This may partly be because some halos that are located in filaments have not yet relaxed into the filament potential and are currently caught in the process of crossing the filament (Jhee et al. 2022). Therefore, their V_{\perp} values may be quite high despite being located in the filament. Only the fraction of the halos that are well virialised in the filament may present the low V_{\perp} values. Thus, in this case, the presence of a filament simply increases the chances for some halos to enter the host halo along the filament conduit with reduced V_{\perp} values (and consequently to have reduced R_{peri} and suffer more significant environmental effects within the host halo), but it does not guarantee this. Also, an additional factor will be the large-scale tidal field in which the filaments are situated, which is expected to also impact on the V_{\perp} values both inside filaments and when they are accreted onto clusters (Shi et al. 2015).

In any case, we do see a clear dependency of V_{\perp} on infaller-to-host halo mass ratio in the upper-right panel of Figure 6, which filaments likely play an important part in producing. It is well known that filaments are mass segregated, in that more massive halos are preferentially found closer to filaments (Kraljic et al. 2018; Libeskind et al. 2018). As a result, the dynamics of halos around filaments may partly drive the clear connection between the mass ratio and V_{\perp} that we detect in our simulations.

4. Summary and Conclusions

Using dark-matter-only cosmological simulations, we study the trajectories of dark matter halos that fall into group- and cluster-mass host halos for the first time (referred to as “infaller halos”). We measure their first pericentre distance (R_{peri} , the minimum distance to the cluster center normalized by the cluster R_{200}), and find that the strength of environmental effects within the host halo are strongly influenced by their R_{peri} value. We attempt to determine what parameters dictate the resulting R_{peri} value. Our main results are summarized as follows:

1. The primary factor influencing the R_{peri} value of most infaller halos is a measure of their peculiar motion, V_{\perp} , the perpendicular component of the orbital velocity, which we measure at the moment the infaller halo enters

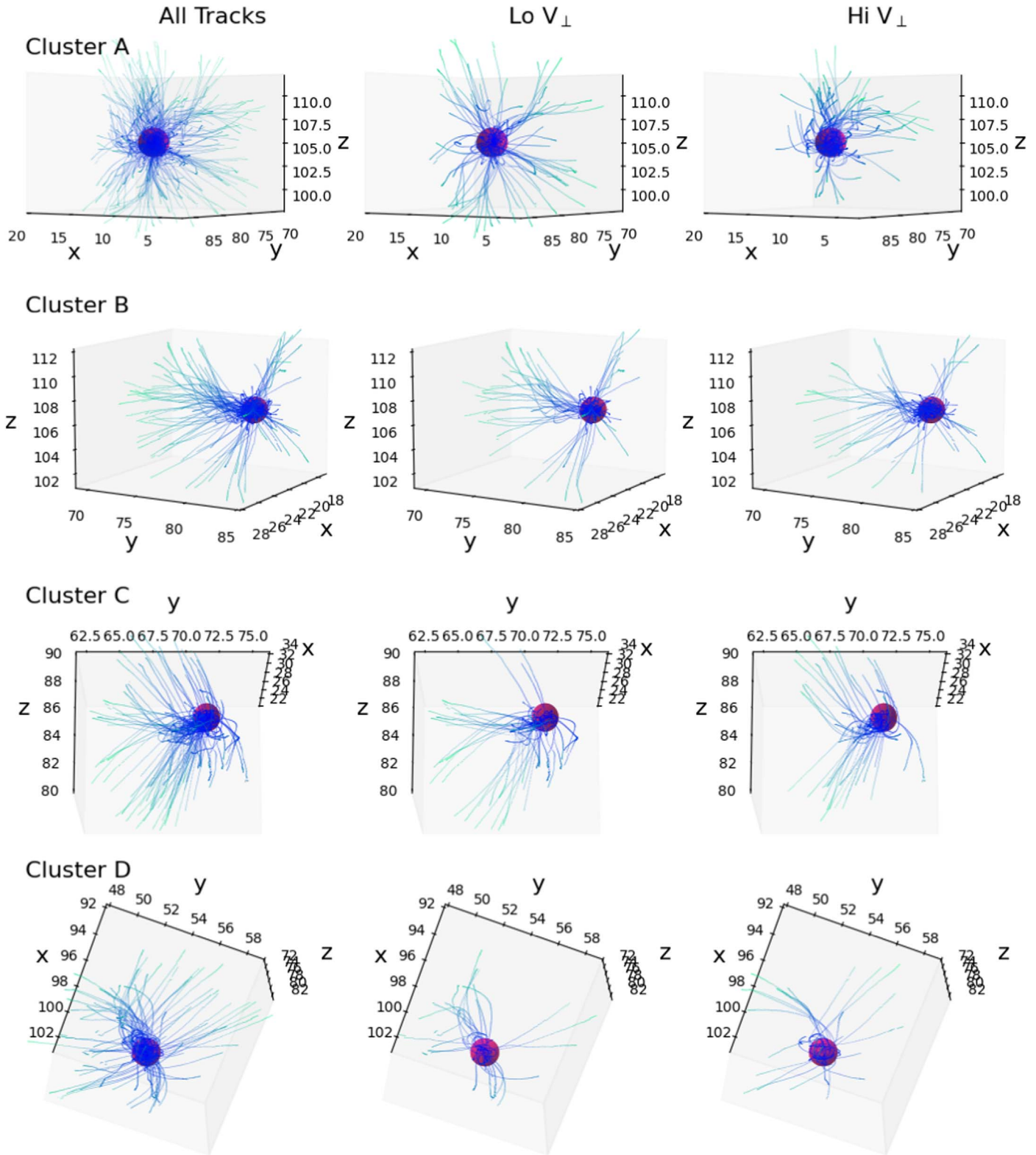


Figure 10. Four representative examples of clusters (shown top to bottom; labeled “Cluster A–D”). A deep-pink sphere shows the location and R_{200} of the clusters at $z = 0$. Blue lines show the trajectories of infaller halos, colored darker blue according to their proximity to the cluster. The left column (labeled “All Tracks”) shows the tracks of all the infallers and highlights the filamentary connections of each cluster. The middle and right columns (labeled “Lo V_{\perp} ” and “Hi V_{\perp} ,” respectively) presents the infaller tracks of low- and high- V_{\perp} subsamples, with equal numbers shown for a fair visual comparison.

their host halo for the first time. Higher V_{\perp} results in larger R_{peri} , which means the strength of tidal mass loss is dictated by the dynamics of the surrounding large-scale structure.

2. Dynamical friction can also play a role in decaying the infaller halo’s orbital energy and thus reducing R_{peri} . However, it has limited time to act between the infaller first entering the group/cluster and reaching the first pericentre,

and we find it is only effective on the 5% of the infaller halos with masses $\gtrsim 10\%$ than their host mass.

3. Halos in filaments have increased chances of having a smaller V_{\perp} value, but it is not guaranteed due to the complex and multiscale velocity field of the large-scale structure. However, we uncover a tendency for infaller halos with a high mass ratio to have reduced V_{\perp} . As a result, the mass ratio is shown to have influence over the first infallers orbit and its resulting tidal mass loss. Somewhat counterintuitively, higher mass satellites are destroyed more rapidly than lower-mass satellites, for a fixed host mass, as a result of this.
4. From cluster to cluster, there are significant variations in their median R_{peri} values, directly as a result of differing median V_{\perp} values. Thus, even similar mass clusters (with similar internal tidal fields) subject their first infallers to differing levels of tidal stripping (and other environmental mechanisms) at their cores, as a result of factors that are entirely external to the clusters.

These results highlight how the efficiency of environmental mechanisms occurring at the centers of groups and clusters can be significantly altered by the peculiar velocities of halos inherited from global dynamics within the large-scale structure, far beyond the cluster virial radius. This emphasizes the importance of considering both the internal properties of dense environments and their large-scale surroundings in order to better understand the efficiency of environmental transformation mechanisms.

We thank the anonymous referee for the detailed report that helped improve the manuscript. We are very grateful to Stephanie Tonnesen and Sean McGee for comments and helpful discussions on an earlier version of this paper. J.H.S.

acknowledges support from the National Research Foundation of Korea (grant No. 2021R1C1C1003785) funded by the Ministry of Science, ICT & Future Planning. This research was supported by the Korea Astronomy and Space Science Institute under the R&D program (Project No. 2022-1-830-05), supervised by the Ministry of Science and ICT. J.S. acknowledges support from the National Research Foundation of Korea grant (2021R1C1C1003785) funded by the Ministry of Science, ICT & Future Planning.

Appendix A Infall Time–Mass Ratio Grids Split by Host and Infaller Mass

In the center panel of Figure A1, we plot a grid of the age of the universe in gigayears at the time of infall versus mass ratio for the full sample (labeled “All”), colored by median R_{peri} (labeled as $R_{\text{peri,All}}$ on the color bar). This is the same as shown in the top-left panel of Figure 6. However, in the surrounding panels we show how the grids appear if we select subsamples of the “All” sample based on their host mass (left panels) or their infall halo mass (right panels). Infallers into high- and low-host-mass halos (labeled “Hi M_{host} ” and “Lo M_{host} ,” respectively) are divided at $M_{\text{host}} = 10^{13.5} M_{\odot}$. High- and low-mass infallers halos (labeled “Hi M_{inf} ” and “Lo M_{inf} ,” respectively) are divided at $M_{\text{inf}} = 10^{11.5} M_{\odot}$. To reduce noise, we only color pixels with at least 20 halos.

The main result to note is that, overall, the $R_{\text{peri,All}}$ values do not change substantially when we subsample by host mass and infall halo mass, i.e., in the regions where the pixels are colored, the colors are quite similar to those shown in the “All” panel. This indicates that the host mass and infaller mass do not independently have a strong impact on R_{peri} when the mass ratio is fixed. In other words, $R_{\text{peri,All}}$ does not strongly depend

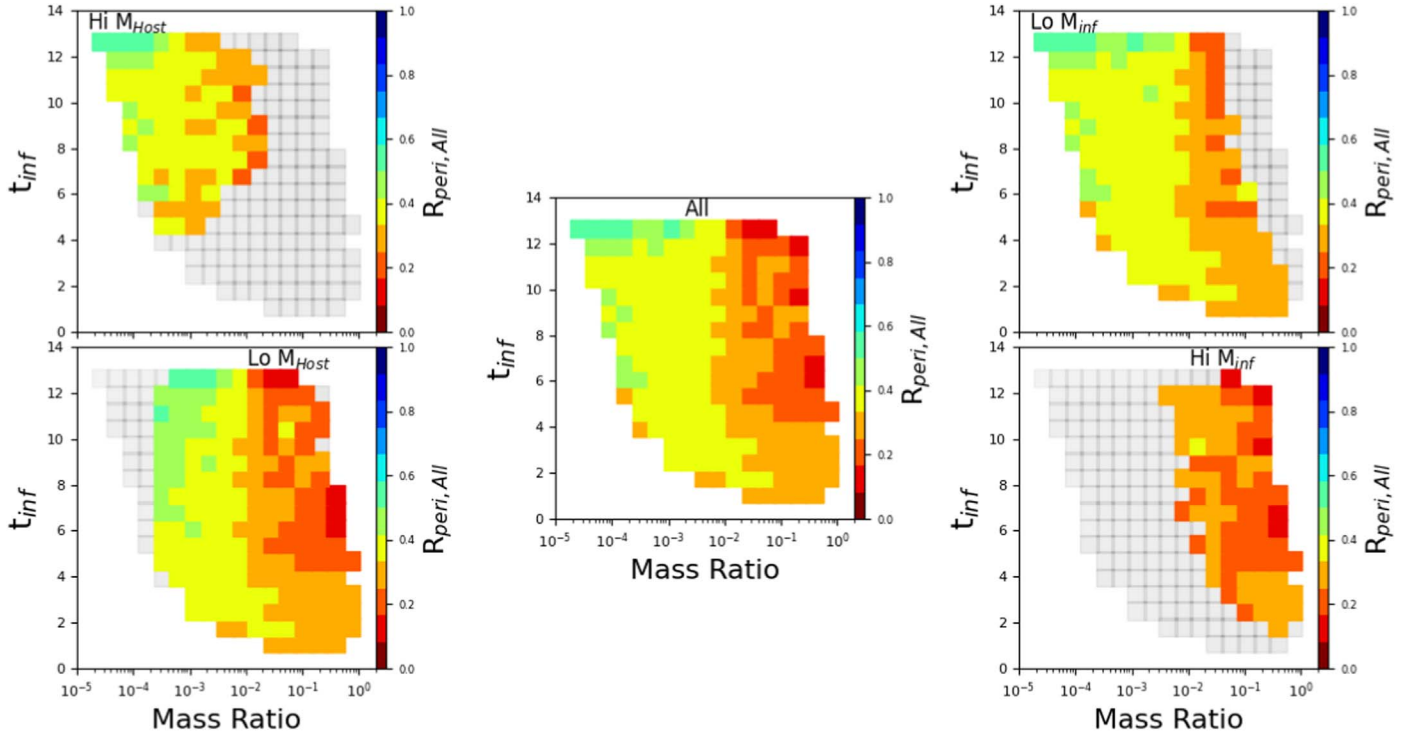


Figure A1. Age of the universe in gigayears at the time of infall (t_{inf}) vs. mass ratio grids, colored by the median R_{peri} of all halos in a pixel ($R_{\text{peri,All}}$). In the central panel, the total sample is shown (labeled “All”). In the left panels, we split the sample by host mass (labeled “Hi M_{host} ” and “Lo M_{host} ”). In the right panels, we split the sample by infaller mass (labeled “Lo M_{inf} ” and “Hi M_{inf} ”).

on host mass or infaller mass. However, the distributions of R_{peri} change with these parameters (as seen in Figure 5) because when we subsample by these parameters, different regions of the grid are included in the R_{peri} distribution. For example, in the lower-right panel, we see that high-mass infallers tend to be high-mass-ratio objects, where the pixels tend to be more red, indicating smaller $R_{\text{peri,All}}$ values.

Appendix B Time Resolution for Accurate R_{peri} Measurements

Typically, the snapshots of our cosmological simulation are approximately 100 Myr apart. In order to assess the accuracy of our R_{peri} measurements given that the true pericentre could occur between the snapshots, we conduct a numerical experiment. We used a simple particle integrator to track the orbital evolution of a point mass within the gravitational potential well of a cluster-mass dark matter halo.

We consider two possible orbits: a typical orbit for first infallers (left panel) and a more extreme plunging infall (right panel). For the typical orbit (left panel), we place the particle on a plunging orbit that travels from the edge of the cluster (R_{200}) to $0.3 R_{200}$, which is a fairly typical value (see Figure 2). For the cluster potential we chose a Navarro–Frenk–White (Navarro et al. 1996) potential with $M_{200} = 1.1 \times 10^{14} M_{\odot}$, and a typical concentration parameter $c = 6.6$ for halos of this

mass. We conduct the simulation for several thousand gigayears, resulting in multiple pericentre passages from which to measure the accuracy of the pericentre measurements.

The smooth red lines in the top panels of Figure B1 show the radial evolution (normalized by R_{200}) of the point mass with 1 Myr timesteps (showing only the first 40 Gyr of evolution). The blue horizontal lines are the true pericentres of the orbit. The red filled circles show the radius when only seen every 100 Myr, like in the cosmological simulation. The blue filled symbols show the closest approach to the true pericentre with the 100 Myr time sampling. The closeness of the blue symbols to the blue horizontal line indicates that the R_{peri} measurements with 100 Myr time sampling are very similar to their true pericentre value. The lower panels show that the difference is less than 1% of R_{200} .

In the more extreme infaller case (right panel), we select objects with the smallest pericenters and highest pericentre velocities from the right panel of Figure 3. We then place a point mass on an extreme orbit ($V_{\text{peri}} = 2.2$ and $V_{\text{peri}} = 0.07$) within a more massive cluster ($3 \times 10^{14} M_{\odot}$) and repeat the experiment. We find that, even in this more extreme case, over half of the pericentre passages are measured to within 1% of the true value, and the worst case is only 2.8%, which is generally more precise than the width of the bars in our histogram results. This demonstrates that our R_{peri} measurements are not strongly affected by the time resolution of our cosmological simulations.

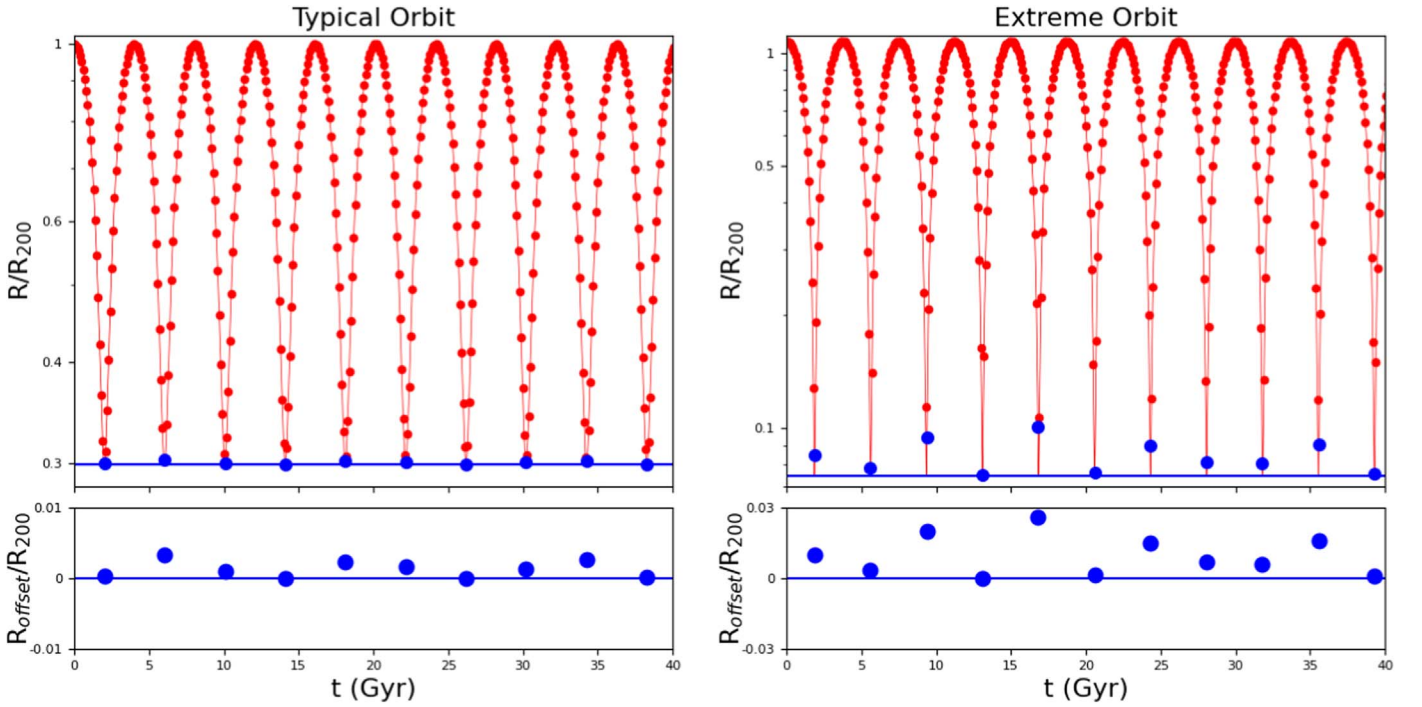


Figure B1. Evolution of R_{peri} with time for a point mass orbiting in a cluster-like fixed analytical potential for a typical orbit of a satellite in a cluster (left) and for a more extreme plunging orbit (right). The red line shows the R_{peri} evolution for 1 Myr timesteps, while the red symbols show the R_{peri} evolution with 100 Myr timesteps, similar to the cosmological simulation. Blue symbols show the minimum R_{peri} values seen with the 100 Myr timesteps. The horizontal lines show the true R_{peri} value. With 100 Myr timesteps, typically the recovered R_{peri} measurement matches the true measurement to within 1%.

ORCID iDs

Rory Smith  <https://orcid.org/0000-0001-5303-6830>
 Paula Calderón-Castillo  <https://orcid.org/0000-0002-7069-113X>
 Jihye Shin  <https://orcid.org/0000-0001-5135-1693>
 Jongwan Ko  <https://orcid.org/0000-0002-9434-5936>

References

- Behroozi, P. S., Wechsler, R. H., Lu, Y., et al. 2014, *ApJ*, 787, 156
 Behroozi, P. S., Wechsler, R. H., Wu, H.-Y., et al. 2013, *ApJ*, 763, 18
 Benson, A. J. 2005, *MNRAS*, 358, 551
 Benson, A. J. 2010, *PhR*, 495, 33
 Benson, A. J. 2021, *MNRAS*, 505, 2159
 Bialas, D., Lisker, T., Olczak, C., Spurzem, R., & Kotulla, R. 2015, *A&A*, 576, A103
 Boylan-Kolchin, M., Ma, C.-P., & Quataert, E. 2008, *MNRAS*, 383, 93
 Byrd, G., & Valtonen, M. 1990, *ApJ*, 350, 89
 Choque-Challapa, N., Smith, R., Candlish, G., Peletier, R., & Shin, J. 2019, *MNRAS*, 490, 3654
 Cortese, L., Catinella, B., & Smith, R. 2021, *PASA*, 38, e035
 Dressler, A. 1980, *ApJ*, 236, 351
 Gnedin, O. Y. 2003, *ApJ*, 589, 752
 González-García, A. C., Aguerri, J. A. L., & Balcells, M. 2005, *A&A*, 444, 803
 Gunn, J. E., & Gott, J. R. I. 1972, *ApJ*, 176, 1
 Hahn, O., & Abel, T. 2011, *MNRAS*, 415, 2101
 Haynes, M. P., & Giovanelli, R. 1984, *AJ*, 89, 758
 Jhee, H., Song, H., Smith, R., et al. 2022, arXiv:2201.09540
 Jiang, C. Y., Jing, Y. P., Faltenbacher, A., Lin, W. P., & Li, C. 2008, *ApJ*, 675, 1095
 Jiang, L., Cole, S., Sawala, T., & Frenk, C. S. 2015, *MNRAS*, 448, 1674
 Kapferer, W., Sluka, C., Schindler, S., Ferrari, C., & Ziegler, B. 2009, *A&A*, 499, 87
 Kennicutt, R. C. J. 1983, *AJ*, 88, 483
 Khochfar, S., & Burkert, A. 2006, *A&A*, 445, 403
 Knebe, A., Knollmann, S. R., Muldrew, S. I., et al. 2011, *MNRAS*, 415, 2293
 Kraljic, K., Arnouts, S., Pichon, C., et al. 2018, *MNRAS*, 474, 547
 Lacey, C., & Cole, S. 1993, *MNRAS*, 262, 627
 Li, Z.-Z., Zhao, D.-H., Jing, Y. P., Han, J., & Dong, F.-Y. 2020, *ApJ*, 905, 177
 Libeskind, N. I., Knebe, A., Hoffman, Y., & Gottlöber, S. 2014, *MNRAS*, 443, 1274
 Libeskind, N. I., van de Weygaert, R., Cautun, M., et al. 2018, *MNRAS*, 473, 1195
 Marasco, A., Crain, R. A., Schaye, J., et al. 2016, *MNRAS*, 461, 2630
 McCavana, T., Micic, M., Lewis, G. F., et al. 2012, *MNRAS*, 424, 361
 Merritt, D. 1984, *ApJ*, 276, 26
 Moore, B., Katz, N., Lake, G., Dressler, A., & Oemler, A. 1996, *Natur*, 379, 613
 Moore, B., Lake, G., Quinn, T., & Stadel, J. 1999, *MNRAS*, 304, 465
 Navarro, J. F., Frenk, C. S., & White, S. D. M. 1996, *ApJ*, 462, 563
 Quilis, V., Planelles, S., & Ricciardelli, E. 2017, *MNRAS*, 469, 80
 Roediger, E., & Brüggem, M. 2007, *MNRAS*, 380, 1399
 Schulz, S., & Struck, C. 2001, *MNRAS*, 328, 185
 Shi, J., Wang, H., & Mo, H. J. 2015, *ApJ*, 807, 37
 Smith, R., Davies, J. I., & Nelson, A. H. 2010, *MNRAS*, 405, 1723
 Smith, R., Sánchez-Janssen, R., Fellhauer, M., et al. 2013, *MNRAS*, 429, 1066
 Smith, R., Sánchez-Janssen, R., Beasley, M. A., et al. 2015, *MNRAS*, 454, 2502
 Smith, R., Michea, J., Pasquali, A., et al. 2021, *ApJ*, 912, 149
 Springel, V., Yoshida, N., & White, S. D. M. 2001, *NewA*, 6, 79
 Tormen, G. 1997, *MNRAS*, 290, 411
 van den Bosch, F. C., Lewis, G. F., Lake, G., & Stadel, J. 1999, *ApJ*, 515, 50
 Villalobos, A., de, L. G., Weinmann, S. M., Borgani, S., & Murante, G. 2013, *MNRAS*, 433, L49
 Vitvitska, M., Klypin, A. A., Kravtsov, A. V., et al. 2002, *ApJ*, 581, 799
 Vollmer, B., Cayatte, V., Balkowski, C., & Duschl, W. J. 2001, *ApJ*, 561, 708
 Wang, H. Y., Jing, Y. P., Mao, S., & Kang, X. 2005, *MNRAS*, 364, 424
 Wetzell, A. R. 2011, *MNRAS*, 412, 49
 Whitmore, B. C., Gilmore, D. M., & Jones, C. 1993, *ApJ*, 407, 489
 Zentner, A. R., Berlind, A. A., Bullock, J. S., Kravtsov, A. V., & Wechsler, R. H. 2005, *ApJ*, 624, 505