



Universiteit
Leiden
The Netherlands

MOVES - V. Modelling star-planet magnetic interactions of HD 189733

Strugarek, A.; Fares, R.; Bourrier, V.; Brun, A.S.; Réville, V.; Amari, T.; ... ; Zarka, P.

Citation

Strugarek, A., Fares, R., Bourrier, V., Brun, A. S., Réville, V., Amari, T., ... Zarka, P. (2022). MOVES - V.: Modelling star-planet magnetic interactions of HD 189733. *Monthly Notices Of The Royal Astronomical Society*, 512(3), 4556-4572. doi:10.1093/mnras/stac778

Version: Accepted Manuscript

License: [Leiden University Non-exclusive license](#)

Downloaded from: <https://hdl.handle.net/1887/3515582>

Note: To cite this publication please use the final published version (if applicable).

MOVES V. Modelling star-planet magnetic interactions of HD 189733

A. Strugarek,^{1*} R. Fares,² V. Bourrier,³ A. S. Brun,¹ V. Réville,⁴
 T. Amari,⁵ Ch. Helling,^{6,7} M. Jardine,⁸ J. Llama,⁹
 C. Moutou,⁴ A. A. Vidotto,¹⁰ P. J. Wheatley,^{11,12} P. Zarka¹³

¹Département d'Astrophysique/AIM, CEA/IRFU, CNRS/INSU, Univ. Paris-Saclay, Univ. de Paris, 91191 Gif-sur-Yvette, France

²Physics Department, United Arab Emirates University, P.O. Box 15551, Al-Ain, United Arab Emirates

³Observatoire Astronomique de l'Université de Genève, Chemin Pegasi 51b, 1290, Versoix, Switzerland

⁴IRAP, Université Toulouse III - Paul Sabatier, CNRS, CNES, 14 avenue E. Belin, 31400 Toulouse, France

⁵Centre de Physique Théorique, CNRS, Ecole Polytechnique, IP Paris, F-91128 Palaiseau, France

⁶Space Research Institute, Austrian Academy of Sciences, Schmiedlstrasse 6, A-8042 Graz, Austria

⁷TU Graz, Fakultät für Mathematik, Physik und Geodäsie, Petersgasse 16, 8010 Graz, Austria

⁸SUPA, School of Physics and Astronomy, North Haugh, St Andrews, Fife KY16 9SS, UK

⁹Lowell Observatory, 1400 W. Mars Hill Rd. Flagstaff. AZ. 86001. USA

¹⁰Leiden Observatory, Leiden University, PO Box 9513, 2300 RA Leiden, The Netherlands

¹¹Department of Physics, University of Warwick, Gibbet Hill Road, Coventry CV4 7AL, UK

¹²Centre for Exoplanets and Habitability, University of Warwick, Gibbet Hill Road, Coventry CV4 7AL, UK

¹³LESIA, UMR CNRS 8109, Observatoire de Paris, 92195 MEUDON, France

Accepted XXX. Received YYY; in original form ZZZ

ABSTRACT

Magnetic interactions between stars and close-in planets may lead to a detectable signal on the stellar disk. HD 189733 is one of the key exosystems thought to harbor magnetic interactions, which may have been detected in August 2013. We present a set of twelve wind models at that period, covering the possible coronal states and coronal topologies of HD 189733 at that time. We assess the power available for the magnetic interaction and predict its temporal modulation. By comparing the predicted signal with the observed signal, we find that some models could be compatible with an interpretation based on star-planet magnetic interactions. We also find that the observed signal can be explained only with a stretch-and-break interaction mechanism, while that the Alfvén wings scenario cannot deliver enough power. We finally demonstrate that the past observational cadence of HD 189733 leads to a detection rate of only between 12 to 23%, which could explain why star-planet interactions have been hard to detect in past campaigns. We conclude that the firm confirmation of their detection will require dedicated spectroscopic observations covering densely the orbital and rotation period, combined with scarcer spectropolarimetric observations to assess the concomitant large-scale magnetic topology of the star.

Key words: planet-star interactions – stars: wind, outflows – magnetohydrodynamics (MHD)

1 INTRODUCTION

Planets on close-in orbit around their host star are subject to complex interactions (Lanza 2018): tidal interactions (Mathis 2020), ionization and atmospheric escape (e.g. Owen 2019; Gronoff et al. 2020), interactions with transients stellar events (Alvarado-Gómez et al. 2020; Varela et al. 2021), and direct magnetic interactions (Saur 2017; Strugarek 2018). The detection of such interactions (Shkolnik & Llama 2018) can provide unique constraints to characterize the secular evolution of star-planet systems (e.g. Ahuir et al. 2021; Lazovik 2021), planetary magnetic field (e.g. Cauley et al. 2018; Turner et al. 2021; Vedantham et al. 2020), the atmospheric state of irradiated planets (e.g. Bourrier et al. 2018a,b), and even stellar wind properties (e.g. Vidotto 2017; Carolan et al. 2021).

Here, we will focus on the case of magnetic interactions. Two main detection techniques have been proposed so far to detect star-planet magnetic interactions (SPMIs).

First, Cuntz et al. (2000) argued that the presence of a close-in planet could increase and modulate the activity of the host star due to direct magnetic connection. Shkolnik et al. (2003) first reported hints of this interaction in the variability of the Ca II H& K bands of HD 179949. In this case, the modulation was observed with the same period as the orbital period of the hot Jupiter HD 179949b. Such detections have then been reported on other stars hosting hot Jupiters (see review of Shkolnik & Llama 2018). Such signals are observed for some specific epochs, and was not found at others (e.g. Shkolnik et al. 2008; Cauley et al. 2018). If this signal originated from a magnetic interaction, such an on/off nature is expected due to the variability of the stellar magnetic field (Moutou et al. 2007; Fares et al. 2017) mediating the magnetic interaction (Cranmer et al. 2007; Strugarek 2018). In addition, other tracers of magnetic activity can also be used

* E-mail: antoine.strugarek@cea.fr

to corroborate this interpretation. For instance, [Gao \(2021\)](#) unveiled that specific longitudes of HD 189733 were particularly active in X-rays, which could be related to a star-planet magnetic connection operating in the system.

Second, SPMI can also in principle be detected from radio emissions ([Zarka 2007](#)). In that case, the emission can originate from two sources. On one side, the motion of the planet within the magnetosphere of the star is analogous to the motion of the satellites of Jupiter within its magnetosphere. The associated radio emissions would then originate from a location in the lower stellar atmosphere where accelerated electron populations would be unstable due to a cyclotron-Maser instability (*e.g.* [Zarka 2004](#)). On the other side, the radio emission could come from the planetary magnetosphere itself. In that case, the emission is directly correlated with the strength of the planetary magnetic field. Coherent radio emission that could be associated with SPMI have been recently reported by [Vedantham et al. \(2020\)](#); [Turner et al. \(2021\)](#); [Callingham et al. \(2021\)](#). If the radio signal shows a modulation with the orbital period of a known planet, or with the rotation period of the star, it could be furthermore possible to disambiguate the source of the detected radio emission (stellar or planetary magnetosphere, see *e.g.* [Fares et al. 2010](#); [Hess & Zarka 2011](#); [Kavanagh et al. 2021](#)).

In all cases, the stellar magnetic field plays a dominant role in shaping the SPMI signal. Indeed, the stellar wind close to the star is structured by the topology of the stellar magnetic field, and this topology acts as a guide for the SPMI signal from the planet to the star. Spectropolarimetric observations of stars allow the characterization of their large scale magnetic field thanks to the Zeeman-Doppler Imaging (ZDI) technique ([Donati & Landstreet 2009](#)). Based on such magnetic maps, models of stellar coronae can predict the large-scale architecture of the stellar atmosphere up to the orbit of planets in close-in orbits (see *e.g.* [Vidotto 2018](#) and references therein). For instance, [Strugarek et al. \(2019\)](#) studied SPMI in Kepler-78 and were able to show that they were likely not detectable in this system. The goal of this work is to assess the likelihood that SPMI are at the origin of the signal detected in HD 189733 by [Cauley et al. \(2018, 2019\)](#).

[Cauley et al. \(2018\)](#) carried a large study of HD 189733 over 6 different observational windows from June 2006 to July 2015. They analyzed the signal in the Ca II K band and removed a rotational modulation from it. In one epoch out of six (August 2013) they found a signal presenting a modulation close to the orbital period of the hot Jupiter HD 189733b. Such signal was interpreted as a SPMI signal in [Cauley et al. \(2019\)](#) to provide an estimate of the hypothetical magnetic field of HD 189733b.

To assess the robustness of this interpretation, we present in this fifth paper of the MOVES collaboration a modelling effort of the wind of HD 189733 for August 2013. In the MOVES series of papers, the first paper by [Fares et al. \(2017\)](#) was dedicated to five epochs of observations including August 2013. A magnetic map obtained with ZDI was derived and analyzed for each epoch. In the second paper of the series, [Kavanagh et al. \(2019\)](#) modelled the wind of HD 189733 for three epochs (June/July 2013, September 2013, and July 2015), focusing on the possibility to detect radio emissions originating from this exosystem. Paper III focused on the variable X-ray and UV environment of HD 189733 ([Bourrier et al. 2020](#)), and paper IV on the atmospheric composition of HD 189733b ([Barth et al. 2021](#)). Here we complement this series by using the ZDI map of HD 189733 in August 2013 to model its wind and by focusing on the manifestations of star-planet magnetic interactions.

We present in section §2 the modelling choices considered in this work. For August 2013, we have carried out 12 different polytropic

wind models varying the coronal temperature and density assumed for HD 189733, as well as the magnetic field component used to deduce the 3D corona and wind. We present the resulting coronal 3D structure as well as the wind properties at the planetary orbit in §3. We then estimate the amplitude and temporal variability of SPMI in §4, and compare them to the signal detected by [Cauley et al. \(2019\)](#). We find that only a few models can accommodate the SPMI interpretation of the observed CaII signal. We conclude that any further SPMI detection could be confirmed only with much more densely sampled observational campaigns better covering both the rotation period of HD 189733 and the orbital period of HD 189733b (see §5).

2 MODELLING THE WIND OF HD 189733

Modelling the wind of HD 189733 based on observed Zeeman-Doppler Imaging maps requires several assumptions, which we detail in this section. The wind model used here is based on the Wind-Predict framework ([Réville et al. 2016](#)) leveraging the PLUTO code ([Mignone et al. 2007](#)), which has been used for instance to model the corona and wind of Kepler-78 ([Strugarek et al. 2019](#)). The equations solved, and boundary conditions, can be found in details in [Réville et al. \(2015b, 2016\)](#). The numerical grid is the same as in [Strugarek et al. \(2019\)](#), it is dense at the bottom of the domain and stretches away from the central star. In this section, we discuss two specific aspects of this modelling. We first discuss the coronal parameters choices in §2.1, and then turn to the magnetic field extrapolation choices in §2.2. In addition, we recall the fundamental parameters of HD 189733 and its close-in planet HD 189733b in Table 1.

2.1 Coronal properties and coronal modelling

The modelling of stellar coronae and wind relies on several assumptions for the properties of the lower atmosphere of cool stars. In a previous work in this series, [Kavanagh et al. \(2019\)](#) modelled the corona of HD 189733 based on a polytropic wind model with the BATS-R-US code. A similar polytropic approach was also used to model the corona of Kepler-78 based on the PLUTO code ([Strugarek et al. 2019](#)). Here, we will make use of the latter model, and explore the sensitivity of the predicted star-planet magnetic interaction with respect to the wind model assumptions.

Polytropic wind models rely on two main thermodynamic parameters at the base of the modelled domain: the coronal density n_c and the coronal temperature T_c . For a given magnetic topology, and a given polytropic index γ , these two parameters control the mass loss rate of the stellar wind and the extent of the Alfvén surface. The latter correspond to the characteristic surface where the accelerating wind overcomes the local Alfvén speed (for a review see [Strugarek 2018](#)). This surface plays a major role in star-planet magnetic interactions: planets orbiting outside the Alfvén surface cannot induce any magnetic interaction tracer on the stellar disk, while planets orbiting inside may do so. In [Kavanagh et al. \(2019\)](#), the coronal density and temperature were chosen following the scaling laws of [Johnstone & Güdel \(2015\)](#). This leads to a high coronal temperature $T_c = 2$ MK, and a relatively dense corona with $n_c = 10^{10} \text{ cm}^{-3}$. These parameters give a mass loss rate of $\dot{M} \sim 3 \times 10^{-12} M_\odot \text{ yr}^{-1}$. Other choices can be made regarding these parameters. [Ahuir et al. \(2020\)](#) developed a methodology to estimate n_c and T_c from stellar parameters. In their approach, they used all observational data available to date (namely magnetic field detections with ZDI and Zeeman broadening, detected astrospheres and their associated mass loss, stellar X-ray flux, and the

rotational distribution of stars in open clusters) to estimate realistic ranges of value for both parameters. Several scenarios are considered, and min/max scaling laws are provided for T_c and n_c . Based on their approach and on the detected rotation period $P_{\text{rot}} \approx 12$ days (Fares et al. 2010), we find that HD 189733 is an intermediate rotator with a Rossby number of $Ro \sim 0.3Ro_{\odot}$ (Ro_{\odot} is the solar Rossby number), and it is therefore rotating too slowly to be in the saturated regime. The minimum and maximum values allowed in their modelling for n_c and T_c are then given by the following scaling laws

$$\begin{cases} n_c^{\min} &= 2.49 \times 10^7 \left(\frac{Ro}{Ro_{\odot}}\right)^{-0.03} \left(\frac{M_{\star}}{M_{\odot}}\right)^{0.83} \text{ cm}^{-3} \\ T_c^{\min} &= 1.5 \left(\frac{Ro}{Ro_{\odot}}\right)^{-0.04} \left(\frac{M_{\star}}{M_{\odot}}\right)^{0.05} \text{ MK} \end{cases}, \quad (1)$$

$$\begin{cases} n_c^{\max} &= 4.63 \times 10^8 \left(\frac{Ro}{Ro_{\odot}}\right)^{-1.07} \left(\frac{M_{\star}}{M_{\odot}}\right)^{1.97} \text{ cm}^{-3} \\ T_c^{\max} &= 1.5 \left(\frac{Ro}{Ro_{\odot}}\right)^{-0.17} \left(\frac{M_{\star}}{M_{\odot}}\right)^{0.19} \text{ MK} \end{cases}. \quad (2)$$

Their values are given in Table 2. These values are the most extreme ones allowed by the modelling developed in Ahuir et al. (2020). Note that they still do not reach the high values of T_c and n_c considered in Kavanagh et al. (2019) (K19 in Table 2), and that they bracket the values predicted from the pioneering model of Holzwarth & Jardine (2007) (HJ07 in Table 2). For the sake of completeness, we decided here to consider four sets of (n_c, T_c) values, including the extreme case of Kavanagh et al. (2019). Therefore, the present work covers the largest acceptable parameter space for T_c and n_c . We note that in Kavanagh et al. (2019) a polytropic index of $\gamma = 1.1$ was used, whereas in the remaining three models considered here we chose to use $\gamma = 1.05$ as in (Strugarek et al. 2019). This difference nevertheless does not significantly change the conclusions of the work presented here. Finally, the polytropic approach used in this work is a crude approximation to the real physical mechanisms heating the corona. More realistic models taking self-consistently the heating of the corona by Alfvén waves should be ultimately used to model asterospheres (e.g. Alvarado-Gómez et al. 2016; Réville et al. 2020). Such models require to set other parameters such as the Poynting flux going into the corona (e.g. Hazra et al. 2021). We note nonetheless that following the work of the Ahuir et al. (2020), the range of polytropic models we consider here encompasses a large parameter space within which the mass-loss and angular momentum loss of an Alfvén-wave driven model would fall. The 3D structure of the corona could nevertheless be different from the one obtained with the polytropic approximation explored in this work (e.g. Hazra et al. 2021), and we leave its detailed study for future work.

Before performing the 3D modelling with the PLUTO code, the global properties of the expected stellar wind can be estimated using the 1D open-source starAML code that computes a 1D Weber-Davis polytropic wind solution (Réville et al. 2015a)¹. Based on the values of T_c and n_c , and on the magnetic map of August 2013, starAML can carry out a prediction of the mass loss rate of the wind model. We show the predicted mass-loss rate \dot{M}_{th} with this reduced model in the third column of Table 2. We see that the range of parameters considered here affect significantly the mass-loss rate, which varies by 3 orders of magnitude from model A20_{min} to model K19. The expected mass-loss rate variation as a function of (T_c, n_c) is summarized in Fig. 1. Constant mass-loss rate in this diagram are shown by the purple contours, labelled by the mass loss value in units of $M_{\odot} \text{ yr}^{-1}$. The four modelling choices studied in this work are indicated by the colored-points (the same color-code will be used throughout

Table 1. Properties of the HD 189733 system

Parameter	Value	Reference
T_{eff} [K]	5050 ± 50	Bouchy et al. (2005)
M_{\star} [M_{\odot}]	0.92 ± 0.03	Bouchy et al. (2005)
R_{\star} [R_{\odot}]	0.76 ± 0.01	Winn et al. (2007)
P_{rot} [days]	11.94 ± 0.16	Fares et al. (2010)
M_p [M_J]	1.13 ± 0.03	Boisse et al. (2009)
P_{orb} [days]	2.2185733 ± 0.0000019	Boisse et al. (2009)
Semi-major axis [R_{\star}]	8.86 ± 0.40	Boisse et al. (2009)
Semi-major axis [R_p]	56.8 ± 2.00	Boisse et al. (2009)
Inclination angle i [°]	85.78 ± 0.03	Morello et al. (2014)

Table 2. Properties of the wind of HD 189733, derived here from the 1D starAML code.

Model	n_c [10^8 cm^{-3}]	T_c [MK]	\dot{M}_{th} [$10^{-14} M_{\odot} \text{ yr}^{-1}$]
A20 _{min}	0.24	1.59	0.15
HJ07	1.66	1.64	1.09
A20 _{max}	15.13	1.84	24.41
K19	99.84	2.00	146.46

the paper). The background color map shows the expected average Alfvén radius $\langle r_A \rangle$ based on the amplitude of the magnetic field from the ZDI map of August 2013. The starAML package computes the wind mass loss \dot{M}_{th} and the angular momentum loss \dot{J}_{th} . The average Alfvén radius can be estimated with

$$\langle r_A \rangle = \sqrt{\frac{P_{\text{rot}} \dot{J}_{\text{th}}}{2\pi \dot{M}_{\text{th}}}}.$$

It varies from a few stellar radii in the top right corner to more than 15 stellar radii in the lower left corner. The particular case where the semi-major axis of HD 189733b is equal to spherically symmetric averaged Alfvén radius $\langle r_A \rangle$ is shown by the black dotted line. Above this line, the planet is likely to spend the major part of its orbit outside the stellar wind Alfvén surface. Below the black dashed line, we expect it to be within the Alfvén surface most of the time. We remark that the A20_{min} and HJ07 models likely lead to a state where the planet is within the Alfvén surface, while the other two are in the opposite situation. Indeed, Kavanagh et al. (2019) found in their model that HD 189733b was likely always outside this surface. As we will see in what follows, the 3D Alfvén surface is asymmetric and therefore HD 189733b could actually go in and out of it along the orbit.

2.2 Magnetic field extrapolation techniques

The second critical hypothesis behind the modelling of stellar coronae lies in the magnetic extrapolation technique. To initialize a stellar coronal model in 3D, a first extrapolation of the magnetic field in the computational domain is required. After this initialization step, the vector magnetic field is imposed only at the bottom boundary and the 3D domain evolves self-consistently under the MHD approximation. The ZDI methodology gives information on the vector magnetic field at the stellar surface. However, most models of stellar coronae rely only on the radial component of this field to initialize their 3D domain and to impose boundary conditions, loosing some observational constraints given by ZDI (e.g. on the total field strength). A pioneering attempt was carried out by Jardine et al. (2013) with the

¹ The source code is accessible [here](#)

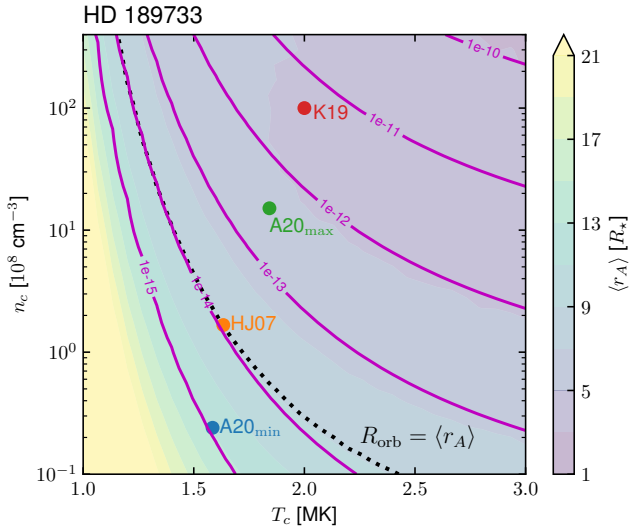


Figure 1. Average Alfvén surface and mass-loss predicted with the starAML (Réville et al. 2015b) package, based on the magnetic ZDI map of August 2013 for HD 189733. The results are shown as a function of the coronal density n_c (y-axis) and of the coronal temperature T_c (x-axis). The background colormap shows the average Alfvén surface in units of stellar radii, and the magenta contours label constant mass-loss rate in units of solar mass per year. The four modelling choices presented in this work (A20_{min}, HJ07, A20_{max}, K19, see text) are labelled by the colored dots. The average Alfvén radius corresponding the semi-major axis of HD 189733b is shown by the black dashed line.

inclusion of non-potential field at the initiation stage of their wind model. This non-potential component was then not retained in their boundaries, as they only maintained the radial component of the magnetic field there during the MHD simulations. They concluded that these components have no significant impact on the modelling of the corona. We revisit here this initial work to assess the influence of the component selection on the driving and sculpting of the stellar corona.

We consider three different magnetic field extrapolation techniques, with mathematical details given in Appendix A. The first initialization technique is dubbed α -P and is a standard potential field with source surface extrapolation technique (e.g. Altschuler & Newkirk 1969; Schrijver & Derosa 2003), based on the radial component of the magnetic field only. This technique assumes that the radial field at the stellar surface is known, and that the field becomes purely radial outside an outer source surface R_{SS} . In this work, we consider $R_{SS} = 15R_\star$. Note that the exact value of R_{SS} affects the initial extrapolation in the whole computational domain and is used to set the fixed magnetic field at the bottom boundary. The wind then develops and changes self-consistently the magnetic connectivity in the corona. We have verified that the exact value of R_{SS} does not change significantly the steady-state MHD solution, since the opening of the field lines is dictated mainly by the wind itself rather than initial source-surface. The second initial extrapolation, dubbed β -NP, is a non-potential extrapolation technique that is driven by the horizontal components of the stellar magnetic field (B_θ and B_ϕ in spherical coordinates). Finally, the third initial extrapolation dubbed $\alpha\beta$ -NP combines the two previous methodologies to obtain a solution approaching the three components of the ZDI maps while retaining a tractable analytical formulation. The three methods are illustrated in Figure 2. The leftmost column shows the three components of

Table 3. Energetics of the magnetic field on the stellar surface

	$\langle B \rangle_{\text{rms}}$ [G]	$E_{\text{tor}}/E_{\text{tot}}$	$E_{m=0}/E_{\text{tot}}$	$E_{\text{tot}}/E_{\text{tot,ZDI}}$
ZDI	40.8	0.50	0.009	1.0
α -P	34.0	0.00	0.009	0.70
β -NP	35.8	0.65	0.017	0.77
$\alpha\beta$ -NP	37.3	0.60	0.009	0.83

the magnetic field obtained through ZDI for August 2013, as seen from the rotational north pole. The three extrapolation techniques are then illustrated in the three last columns with the same color map varying from -35 to 35 G. The extrapolated field components are shown at the base of the domain in the first three rows, and a 3D field line representation of the extrapolated field is shown in the last row. We remark that by design, the α -P extrapolation exactly matches the radial component of the ZDI field, but produces a surface horizontal field that significantly differs from the ZDI map. Conversely, the β -NP extrapolation matches the horizontal field, but produces a different surface radial field. Finally, the $\alpha\beta$ -NP does not match exactly any of the three components, but does match their overall variations and can therefore be considered as the closest extrapolation to the 3D vector magnetic field. We report the energetics of the surface field in Table 3. The energies are calculated by performing the integral of B^2 over the spherical surface divided by 4π , following equation A5. The rms magnetic field $\langle B \rangle_{\text{rms}}$ (second column) is obtained by taking the square root of the energy. We see that the rms field strength varies slightly, from 33.9 to 40.8 G, depending on the field reconstruction technique. The total energy E_{tot} characterizes the full magnetic field (third column), the toroidal energy E_{toro} (third column) uses only the components deriving from the γ_l^m spherical harmonics coefficients (see Appendix A), and the axisymmetric energy $E_{m=0}$ (fourth column) uses only the $m = 0$ poloidal field. The original ZDI map has 50% of its energy within the toroidal components (see also Fares et al. 2017) and only 0.9% of its energy in the poloidal axisymmetric field. The α -P model possesses no toroidal field at initialisation, and generates a surface field that is 30% less energetic than the original ZDI field (fifth column). Model β -NP possesses the strongest relative toroidal field, and model $\alpha\beta$ -NP approaches best the ZDI map while being only 17% less energetic. In all models, the axisymmetric poloidal field remains negligible. As a consequence of these differences, we see in the last row of Fig. 2 that the three extrapolations lead to a very different magnetic connectivity in the environment of the star. This will have a significant impact on the predicted star-planet magnetic interaction signal, as we will see in the next sections.

We recall that the extrapolation techniques are used at initialization in our model. The magnetic field and the stellar wind are then left free to evolve self-consistently in the computational domain, and the three components of the magnetic field are maintained to their initial values at the stellar boundary. We now turn to the effect of the different wind modelling hypothesis on the predicted corona of HD 189733.

3 MODELLING OF HD 189733 ON AUGUST 2013

We summarize the modelled properties of the wind of HD 189733 in Table 4. We report the mass-loss rate of each model, the average radius of the Alfvén surface on the orbital plane $\langle r_A \rangle_{\text{orb}}$, and the open flux Φ_{open} in the corona of the model. We see that the mass loss rate is coherent with the predicted value from Fig. 1, and does not vary significantly with the extrapolation method. This is expected

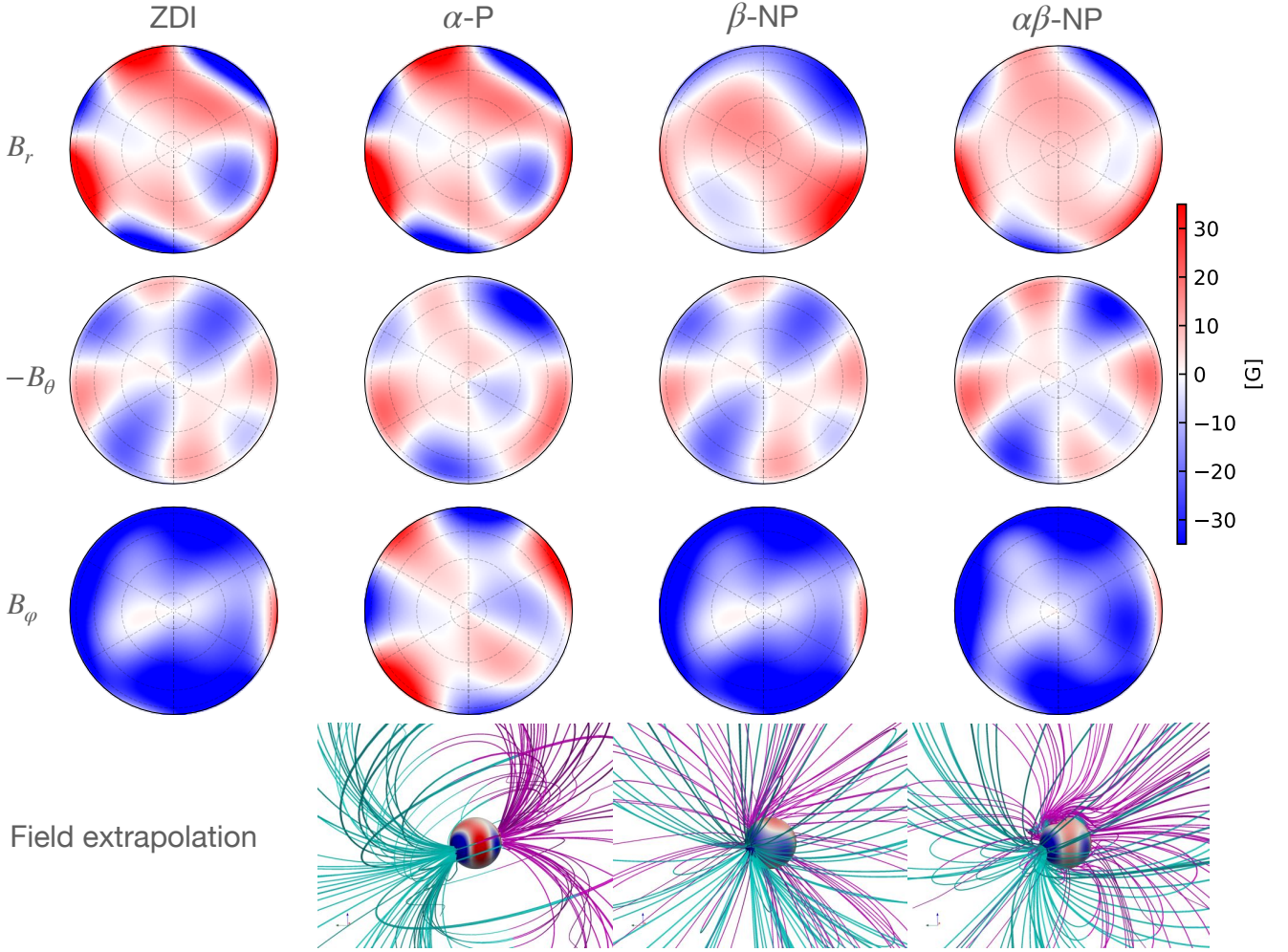


Figure 2. Magnetic maps of HD 189733. The left column shows the north hemisphere of the magnetic map derived with ZDI on the observation of August 2013 by Fares et al. (2017). The concentric dashed black circles correspond to latitudes 80° , 60° , 40° , and 20° . From top to bottom, the magnetic components in spherical coordinates are shown on a colored scale from -35 G (blue) to $+35$ G (red). Note that the second row shows the opposite of the co-latitude component of \mathbf{B} , for the sake of easing the comparison with the maps published in the literature (e.g. Fares et al. 2017). The second, third and fourth columns show the surface field reconstructed with the α -P (§A2), β -NP (§A3) and $\alpha\beta$ -NP (§A4) extrapolation methods. The last row illustrates the magnetic field in the computational domain at the initialization of the MHD runs. The magnetic field lines are colored in magenta ($B_r > 0$) and cyan ($B_r < 0$), and the surface radial magnetic field is shown.

from polytropic wind as the wind driving originates mostly from the assumed coronal temperature T_c (Réville et al. 2016), and the mass loss rate is therefore only mildly affected by the magnetic field itself.

We define here the Alfvén surface based on the relative motion of the stellar wind in a frame where the orbiting planet is at rest. This average Alfvén surface is reported in column 4 of Table 4 (with maximum and minimum values as superscripts and subscripts), and is plotted on the orbital plane in Figure 3 for all models. From left to right, the three magnetic extrapolation techniques are shown and in each panel the four models $A20_{\min}$ (blue), HJ07 (orange), $A20_{\max}$ (green) and K19 (red) are shown. The size of the Alfvén surface decreases with T_c and n_c . In each panel, the circular orbit of HD 189733b is shown by a black dashed line. The modelling choices for the corona and wind of HD 189733 have a strong impact on the position of the Alfvén surface relative to the orbit. Models HJ07 and $A20_{\min}$ predict that the planet is almost always inside the Alfvén surface, and in the case of model $A20_{\min}$, β -NP it is never outside it. Conversely, the K19 and $A20_{\max}$ models predict that HD 189733b is

always outside the Alfvén surface, *i.e.* it orbits in the external super-Alfvénic part of the stellar atmosphere. In the case of model $A20_{\max}$, the orbit of the planet sometimes almost reaches the boundary of the Alfvén surface (see *e.g.* the middle panel). If that is indeed the case, no magnetic connection is possible between the star and the planet in these cases, and this would imply that the signal detected by Cauley et al. (2018) cannot originate from SPMI. We recall that the $A20_{\min}$ and $A20_{\max}$ models are based on the study of Ahuir et al. (2020) and bracket the most probable parameter space for modelling the wind of HD 189733 with a polytropic approach. Based on this study, model $A20_{\max}$ corresponds to the case with the largest mass loss and the smallest Alfvén surface. Therefore, since in the cases $A20_{\max}$ the planet almost reaches the borders of the Alfvén surface at some orbital phases, we conclude that it is likely that HD 189733 b spends at least part of its orbit within the Alfvén surface of its host star wind, and that SPMIs affecting the star could therefore be in action in this system.

The Alfvén surface varies significantly in the three panels of Figure

Table 4. Properties of the 3D MHD models of the wind of HD 189733. From left to right, the column are the model name, the type of magnetic field extrapolation (see §2.2), the mass loss rate of the wind, the average Alfvén radius on the orbital plane, and the open flux in the stellar wind.

Model	Magnetic extrapolation	\dot{M} [$10^{-14} M_{\odot} \text{ yr}^{-1}$]	$\langle r_A \rangle_{\text{orb}}$ max min [R_{\star}]	Ψ_{open} [10^{22} Mx]
A20 _{min}	α -P	0.15	15.1 ^{20.6} _{7.4}	0.7
	β -NP	0.15	16.6 ^{21.1} _{9.3}	0.6
	$\alpha\beta$ -NP	0.18	15.8 ^{19.8} _{8.5}	0.6
HJ07	α -P	1.1	10.8 ^{14.1} _{4.5}	1.1
	β -NP	2.6	11.0 ^{13.6} _{6.4}	1.1
	$\alpha\beta$ -NP	1.5	10.8 ^{14.2} _{5.5}	1.2
A20 _{max}	α -P	24.3	5.9 ^{8.1} _{2.9}	2.2
	β -NP	30.8	6.8 ^{8.3} _{3.3}	3.0
	$\alpha\beta$ -NP	29.7	5.7 ^{7.9} _{2.5}	2.4
K19	α -P	146.0	4.1 ^{5.5} _{2.1}	3.0
	β -NP	161.0	5.0 ^{6.1} _{2.7}	4.5
	$\alpha\beta$ -NP	147.0	4.2 ^{5.7} _{2.1}	3.4

3. In each panel, the surfaces have a similar shape but change in size. From one panel to the other, we see that the shape of the Alfvén surface changes due to a different magnetic topology induced by the extrapolation choice and can rotate by an angle close to 90°. Such changes do not affect the fundamental SPMI, but change its temporal variability along the planetary orbit.

We show in Figure 4 the properties of the SPMI along the orbital path for each model. The upper panel shows the Alfvénic Mach number $M_a = \bar{v}/v_a$ where \bar{v} is the velocity of the interplanetary medium in the frame orbiting with the planet and $v_a = B/\sqrt{4\pi\rho}$ is the local Alfvén speed. As expected from the orbital plane shown in Fig. 3, we recover that the planet is predicted to be inside or outside the Alfvén surface depending on its orbital phase. For instance, in model HJ07 (second column) the planet is in a sub-alfvénic interaction regime ($M_a < 1$) most of the time, and in a super-alfvénic interactions regime ($M_a > 1$) near $\phi_{\text{orb}} = 0.15$ and $\phi_{\text{orb}} = 0.51$ for model α -P (magenta line). The other models (β -NP and $\alpha\beta$ -NP) present a similar profile, shifted by a few tenths of planetary orbit. Conversely, we recover also that model K19 predicts a planet always in a super-alfvénic interaction regime with $M_a > 1$ for all orbital phases.

The lower panel of Fig. 4 shows the Poynting flux density in the stellar wind accessible to SPMI as a function of the orbital phase. This Poynting flux density is denoted S_w and is defined as

$$S_w = -\frac{1}{\mu_0} [(\mathbf{v} \times \mathbf{B}) \times \mathbf{B}] \cdot \frac{\tilde{\mathbf{v}}}{|\tilde{\mathbf{v}}|}. \quad (3)$$

The Poynting flux density varies from a few tenths of W/m^2 to a few W/m^2 in the 12 models considered here. It can vary significantly along the orbit of the planet, due to the large variations expected in the amplitude of the wind magnetic field there (e.g. Fares et al. 2010). For instance, in model HJ07 (α -P) in magenta in the second column, the Poynting flux density varies from 0.003 to 0.35 W/m^2 along one orbit. Finally, the SPMI is therefore fed with a highly varying Poynting flux along the orbit. We consequently expect that any SPMI signal should present significant variability with an orbit solely based on this variation. We also note that in the super-alfvénic cases (last and second-to-last columns), the SPMI still intersects this Poynting flux density but the SPMI channels energy towards the interplanetary medium. This flux could still be meaningful, e.g. for the SPMI in the

context of radio emission within planetary magnetospheres forced by its interaction with the stellar wind.

In our approach, α -P models generally predict the smallest Poynting flux density levels, and β -NP models predict the largest levels. This correlates with the relative toroidal energy of the reconstructed surface magnetic field (first column in Table 3) used to drive the coronal model. The Poynting flux density varies at most by a factor of 2 when changing the extrapolation method, therefore we consider that the estimated levels of S_w shown in Fig. 4 are robust. Note that models with higher mass loss rates (from left to right) generally predict larger maximum levels of S_w .

The large variations of M_a and S_w along the orbital path leads to the conclusion that any SPMI signal should also embed such variability. We now turn to the estimate of the amplitude and relative phasing of the SPMI signals expected from our set of simulations that exhibit sub-alfvénic orbits.

4 EXPECTED STAR-PLANET MAGNETIC INTERACTIONS

4.1 Amplitude of star-planet magnetic interactions

In the recent literature, several flavors of star-planet magnetic interactions have been considered to estimate the power associated with them.

On one side, the Alfvén-wings (hereafter AW) SPMI was proposed for compact exosystems based on the parallel drawn with such interactions in planet-satellite interactions within the solar system. Following the analytical development of Saur et al. (2013) that refined the original developments of Zarka et al. (2001); Zarka (2007), an estimate of the maximal power channeled by SPMI towards the central star (provided the planet orbits within the Alfvén surface) can be written as

$$\mathcal{P}_{\text{AW}} = 2\pi R_P^2 S_w \left(3\zeta^{-2/3} M_a \right), \quad (4)$$

where $\zeta = B_w/B_P$ is the ratio of the interplanetary magnetic field at the planet orbit B_w to the assumed planetary magnetic field B_P at the surface of the planet. The factor 3 originates from the fact that the effective obstacle is actually the planet and its magnetosphere, and therefore in the most efficient magnetic topology the obstacle increases by a factor 3 (see Saur et al. 2013 for more details). We also have dropped an efficiency factor ($\bar{\alpha}$ in Saur et al. 2013) to provide an estimate of the maximal power involved in this model of SPMI.

On the other side, Lanza (2013) proposed a different interpretation of SPMI whereby the accessible power is directly tapped from the planetary field itself. In this scenario, the planetary field reconnecting with the ambient stellar wind field is stretched by the orbital motion of the planet and ultimately breaks by means of reconnection. We dubbed this scenario as *stretch-and-break* (SB) in what follows. The SB power can be estimated as

$$\mathcal{P}_{\text{SB}} = 2\pi R_P^2 S_w \left(\zeta^{-2} f_{\text{AP}} \right), \quad (5)$$

where f_{AP} is the area fraction of the planetary disk where magnetic field lines are connected to the ambient wind. In the optimal magnetic topology where the polar planetary field is oriented in the same direction as the ambient field, it can be estimated as

$$f_{\text{AP}} = 1 - \left(1 - \frac{3\zeta^{1/3}}{2 + \zeta} \right)^{1/2}. \quad (6)$$

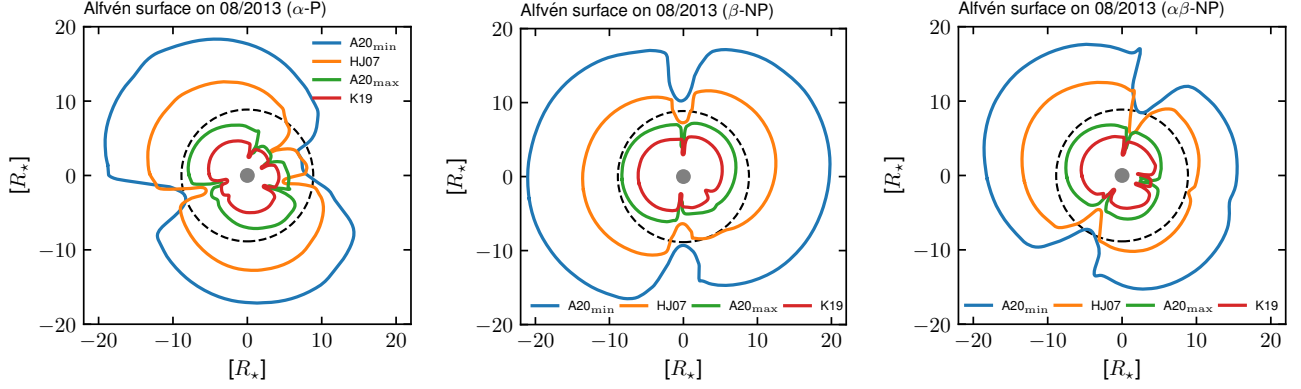


Figure 3. Contours of the Alfvén surface on the orbital plane, defined as $M_a = 1$ (see text). Each model (A20_{min}, HJ07, A20_{max}, K19) is represented by a different color (blue, orange, green, red). From left to right, models α -P, β -NP and $\alpha\beta$ -NP are shown. The orbit of HD 189733b is shown in each panel by the dashed black line.

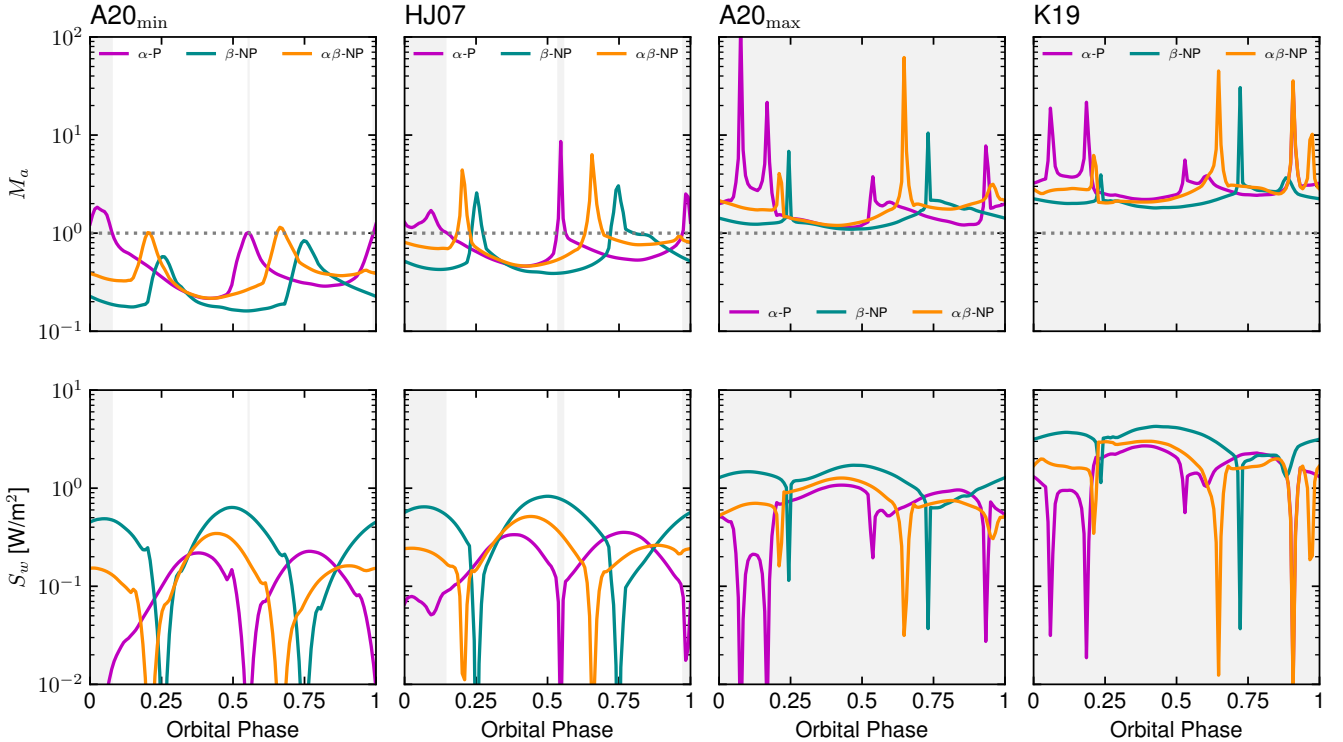


Figure 4. Properties of the star-planet magnetic interactions along the orbit of HD 189733. The first row shows the Alfvénic Mach number M_a , and the second row the Poynting flux amplitude S_w in units of W/m^2 . Each column correspond to one of the four modelling choices (from left to right A20_{min}, HJ07, A20_{max}, and K19). In each panel, the three magnetic extrapolation are shown in magenta (α -P), green-blue (β -P) and orange ($\alpha\beta$ -NP). The greyed areas correspond to phases where $M_a > 1$ in case $\alpha - P$. Here, the orbital phase is arbitrarily set to 0 when the planet is at the zero longitude of the magnetic maps shown in Fig. 2. The real planet phase with respect to the rotating magnetic map is taken into account only in the comparison with the observational data in Fig. 8.

The ratio $\mathcal{P}_{\text{SB}}/\mathcal{P}_{\text{AW}}$ can reach a 100 to a 1000, depending on the Alfvénic Mach number M_a and the magnetic field ratio ζ . In an attempt to model such interactions from first principles in 3D, [Strugarek \(2016\)](#) found in numerical MHD simulations that the Alfvén-wings SPMI was indeed in action. In this work, he did not find hints of the stretch-and-break scenario of [Lanza \(2013\)](#). It is today nevertheless difficult to rule completely out the fact that numerical simulations at higher resolution may lead to the development of such a type of

SPMI. For the sake of completeness, we therefore consider in what follows the two possibilities, and leave for future work the exploration of the likeliness of the SB scenario.

We show the maximum –along the orbit– of \mathcal{P}_{AW} and \mathcal{P}_{SB} as a function of the assumed B_P in Fig. 5. We consider planetary fields between 0.1 G and 30 G, following the estimated field proposed by [Cauley et al. \(2019\)](#). The upper panel shows the maximal power reached in model A20_{min}, and the lower panel the maximum power

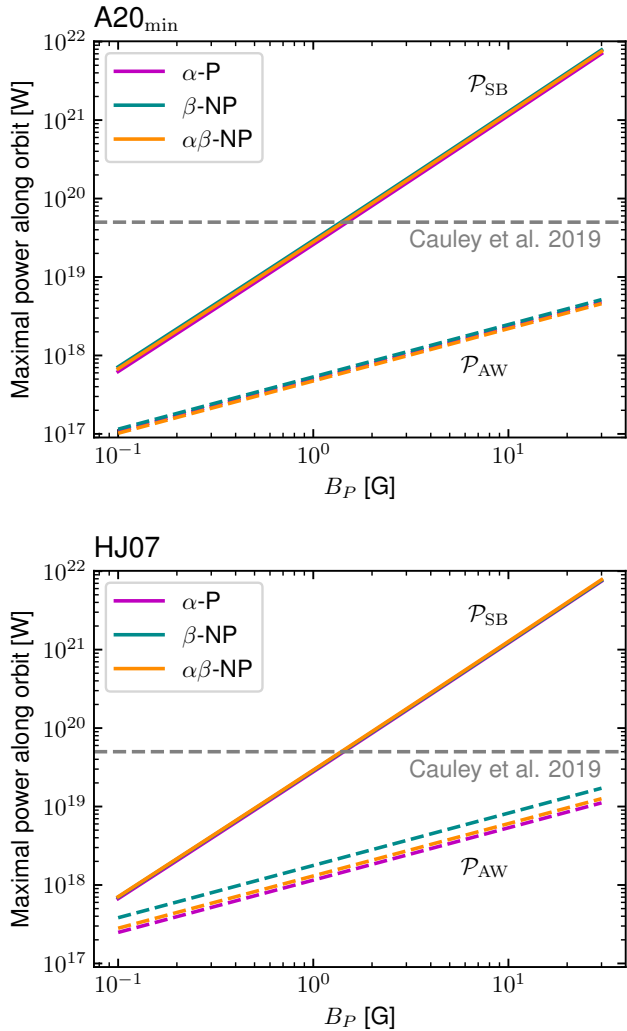


Figure 5. Maximal power (in W) available along the orbit as a function of the assumed planetary magnetic field B_P (in G). The top panel corresponds to models A20_{min} and the bottom panel to models HJ07. The models are colored with respect to the magnetic extrapolation technique, as in Fig. 4. The powers estimated with the stretch-and-break scenario (\mathcal{P}_{SB}) are shown with a solid line, and the powers estimated with the Alfvén wings scenario (\mathcal{P}_{AW}) with a dashed line. The maximum observational signal detected by Cauley et al. (2019) is shown by the grey horizontal dashed line.

reached in model HJ07. The two other models are not shown here, as the planet is then outside the Alfvén surface for most of its orbit. We find that \mathcal{P}_{AW} can vary from 10^{17} W up to a maximum close to 10^{19} W. \mathcal{P}_{SB} can reach much higher values up to about almost 10^{22} W. The Alfvén-wing scenario predicts powers that are more sensitive to wind model due to the additional M_a dependency in Eq. 4. Conversely, the amplitude of \mathcal{P}_{SB} predicted by Lanza (2013) varies even less with respect to the wind modelling choice, as seen when comparing the two panels and the different extrapolation techniques.

Cauley et al. (2019) detected a signal that could originate from SPMI on HD 189733. They found that this signal corresponded to a power of about 5×10^{19} W (grey dashed line in Fig. 5). From rough scaling laws, they noted that \mathcal{P}_{SB} was *a priori* the only SPMI model predicting strong enough interactions to explain such large powers. In this study we reach essentially a similar conclusion. Indeed, we

recall here that these estimates are the maximum power available from SPMI. Only part of that power would be transferred to the CaII emission lines. We do not know today which conversion factor should be applied in the context of SPMI. Therefore, only the mechanism proposed in Lanza (2013) is likely predicting enough power to explain the observed signal with SPMI, with $B_P \gtrsim 1G$. The very large values of magnetic field reported by Cauley et al. (2019) account for a safe conversion factor, whereby a few tenths of a percent of the total SPMI power is converted into an observable CaII flux. Such large magnetic field must then be put in the context of the conditions at the planetary orbit. In Fig. 6 we have added a virtual planetary magnetosphere within our stellar wind model. Note that this magnetosphere, represented by the orange field lines, was not evolved self-consistently within the MHD wind solution. It must therefore be considered here only as an illustration, as we simply added a dipolar field to the simulation results at the planet location in post-processing. It nevertheless gives a rough idea of the size of the magnetosphere, because the pressure at the planetary orbit is dominated by the magnetic pressure of the wind which accounts for about 80% of the total pressure there. We show the size of the magnetosphere of the planet when considering a planetary field of 0.4, 3, and 30 G from top to bottom. We see that in the latter case, the magnetosphere fills up almost to the stellar surface. This extreme situation would require dedicated modelling where a self-consistent planet is embedded in the stellar wind (see e.g. Cohen et al. 2009; Strugarek et al. 2015). Indeed, in this situation the magnetosphere can have subparts inside and outside the Alfvén surface, and the location of the footpoints of the interaction can vary significantly compared to the compact magnetosphere case shown in the top panel. This aspect is out of the scope of the present study and will be addressed in a future work.

It is nevertheless puzzling to understand why Cauley et al. (2018) detected a SPMI signal in August 2013, and not at other observational epochs. One possibility would be that the planet was within the Alfvén surface of the stellar wind only at that epoch. This is nevertheless not very likely, because the amplitude of the surface magnetic field of HD 189733 did not change significantly between the epochs studied in Cauley et al. (2018) (see Fares et al. 2010), and therefore the size of the Alfvén surface size likely did not change significantly either. Another source of difficulty to detect SPMI in stellar activity tracers is that their signal originates from energy deposition in the stellar chromosphere. The phase of such signal is a complex convolution between orbital motion, stellar rotation, and the magnetic topology in the stellar atmosphere that controls the travel-time of the Alfvén waves and particles carrying the SPMI energy from the vicinity of the planet down to the stellar chromosphere. It is therefore possible that at other epochs the SPMI signal exists but is not well correlated with the orbital period. We now turn to studying this complex interplay thanks to the 3D models presented in this work.

4.2 Phase of star-planet magnetic interactions

The power associated with SPMI is channeled from the planet vicinity towards the star along the Elsasser characteristics (Strugarek 2018) defined as

$$\mathbf{c}_a^\pm = \mathbf{v} \pm \mathbf{v}_a. \quad (7)$$

These can be estimated based on the 3D structure of the model, and are illustrated for case HJ07 ($\alpha\beta$ -NP) in Fig. 7. The streamlines of the Elsasser characteristics from the planet orbit (white circle) towards the star are shown in red (\mathbf{c}_a^-) and blue (\mathbf{c}_a^+). At each orbital phase, the two characteristics exist, but here we only show the ones that

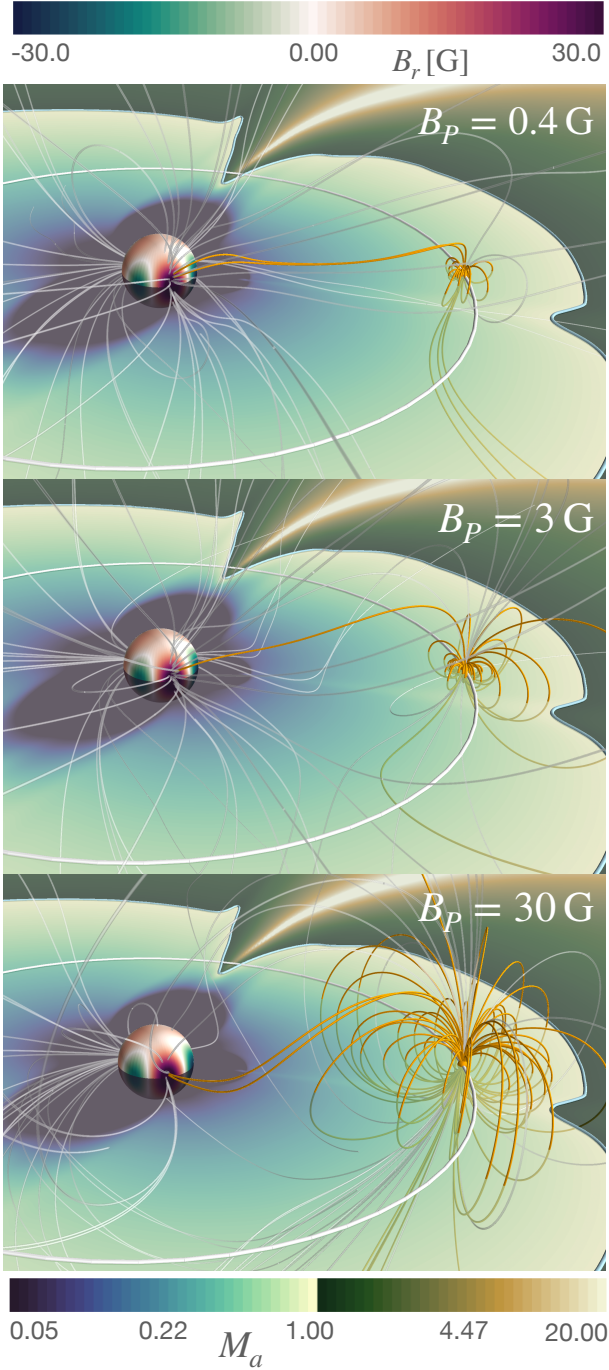


Figure 6. Three-dimensional rendering of the corona and wind of HD 189733 for model HJ07 ($\alpha\beta$ -NP). The magnetic field lines are shown by the gray tubes. The Alfvénic Mach number M_a is shown on the orbital plane in log scale, in bright blueish tones when $M_a < 1$ and bright yellowish tones when $M_a > 1$. The radial magnetic field at the bottom spherical boundary is shown in green (negative B_r) and red (positive B_r). The orbit of HD 189733 is illustrated by the white circle. The hypothetical magnetic field of HD 189733b, added here as a post-processing (*i.e.* it is not included in the MHD simulation, and therefore does not take into account any pressure equilibrium and does not produce a tail), is shown by the orange tubes. From top to bottom, the planetary field is assumed to reach 0.4 G, 3 G and 30 G at the planetary surface.

connect back to the star. The Alfvén surface of the stellar wind is shown by the transparent blue volume, and its imprint on the orbital plane is highlighted by a light blue tube. We immediately remark that in this case, the SPMI connects back to the star only on three different locations in Fig. 7. This means that any SPMI signal imprinted on the stellar disk is visible only when at least one of these locations is visible for the observer. These locations correspond to the main magnetic poles of the star, and it implies that any induced hot spot will be differently phased along the orbit with respect to the planet location.

In order to be more quantitative, we make use of the 3D wind model to predict the observable phases of SPMI. The procedure involves the following steps

- We use ephemerids of the planet to position the planet along its orbit relatively to the rotational phase of the star. Here we use the detailed ephemerids of HD 189733 published in Fares et al. (2017). We have tested other ephemerids (*e.g.* Agol et al. 2010; Hrudková et al. 2010; Kokori et al. 2021) and found no significant differences in our results for August 2013.

- The SPMI signal originates from the vicinity of the planet in the two SPMI scenarios considered here (see §4.1). It is then transported towards the star along the Elsasser characteristics c_a^\pm (see Eq. 7). For the sake of completeness, we have also tried to transport the SPMI signal along the magnetic field lines rather than the Elsasser characteristic. Since the planet is close to its host, this makes negligible differences, and we therefore use the Elsasser characteristics in what follows.

- In the AW and SB scenarios, the energy is transported towards the star at approximately the local Alfvén speed. The Alfvén travel time from the orbit of the planet down to the star therefore varies along the orbit. For instance, in model HJ07 ($\alpha\beta$ -NP) the travel time can vary between 1 and 35 hours. At maximum, this corresponds to 67% of the orbital period. This means that at these orbital phases, the energy available for SPMI reaches its final destination in the stellar chromosphere more than half an orbit after its trigger. Such delays are important and must therefore be accounted for when estimating the phase of SPMI signals. For the sake of completeness, we have also assessed the SPMI signal assuming an instantaneous information transport, which would be realized if the SPMI signal originated from accelerated electrons in the vicinity of the planet (see *e.g.* Saur et al. 2018). This is discussed in Appendix C, and we found that the SPMI signal is modified only at some specific times by this assumption, and that the overall properties of the signal remain the same.

- Stellar rotation must be taken into consideration when producing synthetic SPMI signal. We consider in this work that HD 189733 rotates in 12 days (Fares et al. 2010), and that the ZDI map is representative of the magnetic topology of HD 189733 during the reference observations from Cauley et al. (2018) that were taken over about 18 days. As the star rotates, we follow the impact location of the SPMI which can be within the visible stellar disk or behind the star, making the predicted SPMI signal visibility change (see *e.g.* See et al. 2015). We note that stellar rotation is the most influential parameter on the temporal signature of the SPMI signal. We discuss the sensitivity of the signal with P_{rot} in Appendix B and consider here the canonical value of 12 days. More advanced modelling shall include differential rotation as well, which is ignored for the time being in this work.

- We take into account the inclination of the stellar axis of rotation with respect to the viewing angle from Earth. Fares et al. (2017) estimate that the rotation axis of HD 189733 is almost perpendicular to the line of sight, with an inclination of approximately 5 degrees. We take into account this inclination in what follows.

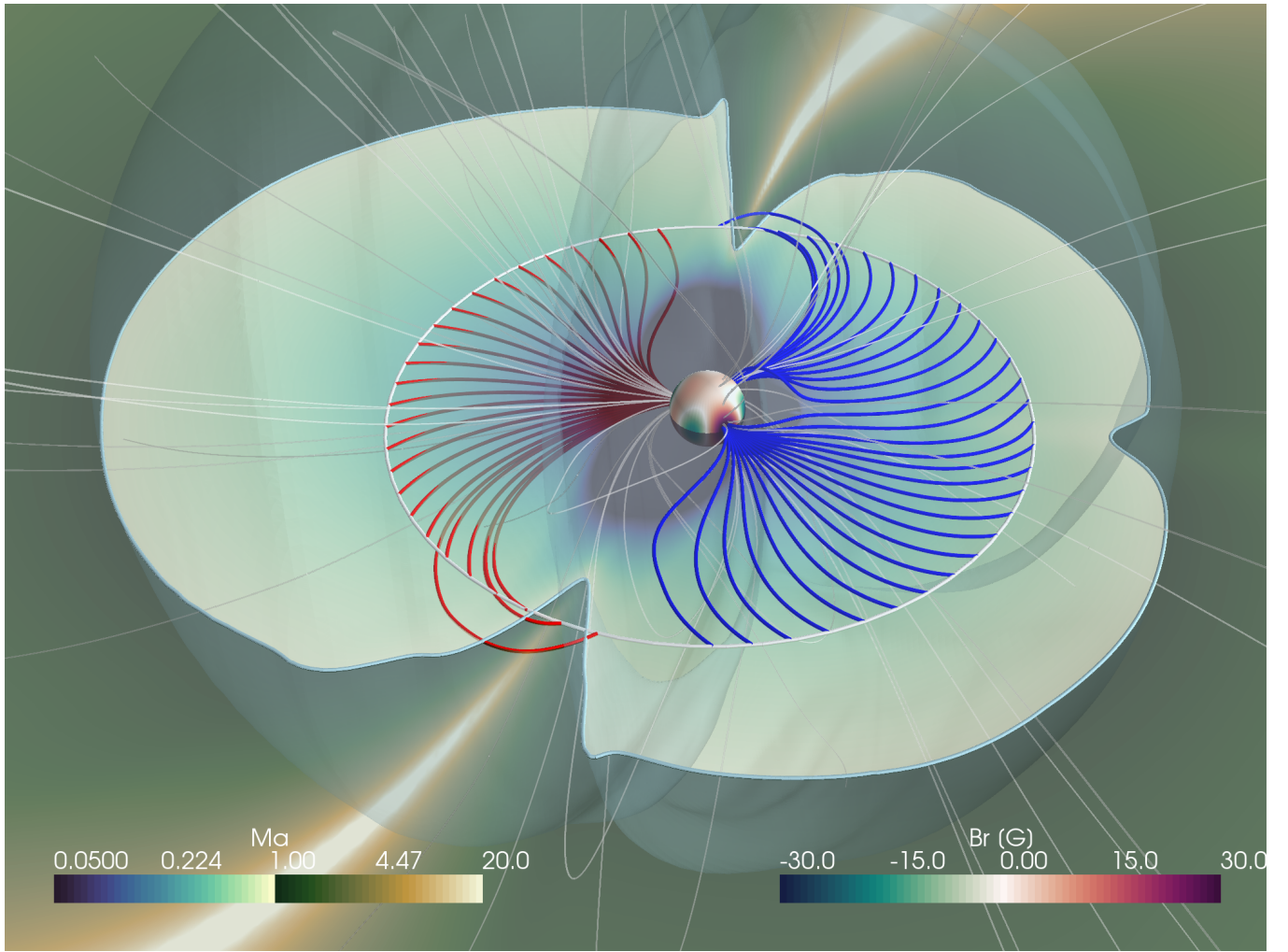


Figure 7. Three-dimensional rendering of the corona and wind of HD 189733 for model HJ07 ($\alpha\beta$ -NP). The layout is the same in Fig. 6. The Alfvén surface is shown by the transparent blue volume, and the light blue tube is its imprint on the orbital plane. The Alfvénic Mach number M_a is shown on the orbital plane in log scale, in bright blueish tones when $M_a < 1$ and bright yellowish tones when $M_a > 1$. The magnetic field lines in the stellar corona and wind are illustrated with transparent gray tubes. The radial magnetic field at the bottom spherical boundary is shown in green (negative B_r) and red (positive B_r). The magnetic connectivity between the orbital path and the stellar surface is shown by the red (c_a^-) and blue (c_a^+) lines (see text).

We show the resulting theoretical SPMI power as a function of time in Fig. 8 for model HJ07. Each panel corresponds to a different extrapolation technique as indicated in the top left corners (α -P, β -NP, and $\alpha\beta$ -NP from top to bottom). The synthetic SPMI signal is shown with crosses and is averaged with a moving 1-hour window to mimic the observational exposure time (Fares et al. 2017). We show here the total power involved in the SPMI estimated with the stretch-and-break mechanism (\mathcal{P}_{SB} , see Eq. 5), assuming a planetary magnetic field $B_P = 10$ G. We note that the absolute value of the planetary magnetic field essentially changes the absolute power available (see Fig. 5) and affects only very mildly the shape of the synthetic SPMI signal. The inclination of the planetary field could nevertheless affect the strength of the SPMI, as was shown in Strugarek et al. (2015). Here we consider the maximal interaction case, *i.e.* the case where the polar planetary field is aligned with the ambient field.

The three extrapolation models predict a significantly different SPMI signal. Models β -NP (middle panel, cyan) and $\alpha\beta$ -NP (lower panel, orange) share some similarities but also present different structures, as visible for instance at 4 and 16 days. Model α -P (top panel,

purple) has features slightly shifted in time compared to the other two models, as for instance at 12 days. We therefore see here that the predicted SPMI signal strongly depends on the magnetic structure that sets the connectivity between the chromosphere and the planetary orbit.

We have added in each panel the residual power published by Cauley et al. (2019) shown as blue squares with error-bars. The residuals were obtained by subtracting a rotational modulation from the CaII emission (see Cauley et al. (2018, 2019) for more details). Here, the predicted power is larger than the observed power in CaII by an order magnitude because we assumed a planetary field of 10 G (see Fig. 5). Indeed, only part of the total CaII power likely ends up in the CaII K band (see §5 for discussions). Therefore, to ease the phase comparison with the synthetic SPMI signal, we have multiplied the residuals by 16. The scarcity of the observational measures prevents us from performing a quantitative comparison of the observed and modelled signals. Qualitatively, we remark that model α -P (top panel) predicts a lack of signal at epochs where the SPMI signal is strong, as for instance at about 11 days. Also, at about 14 days the model

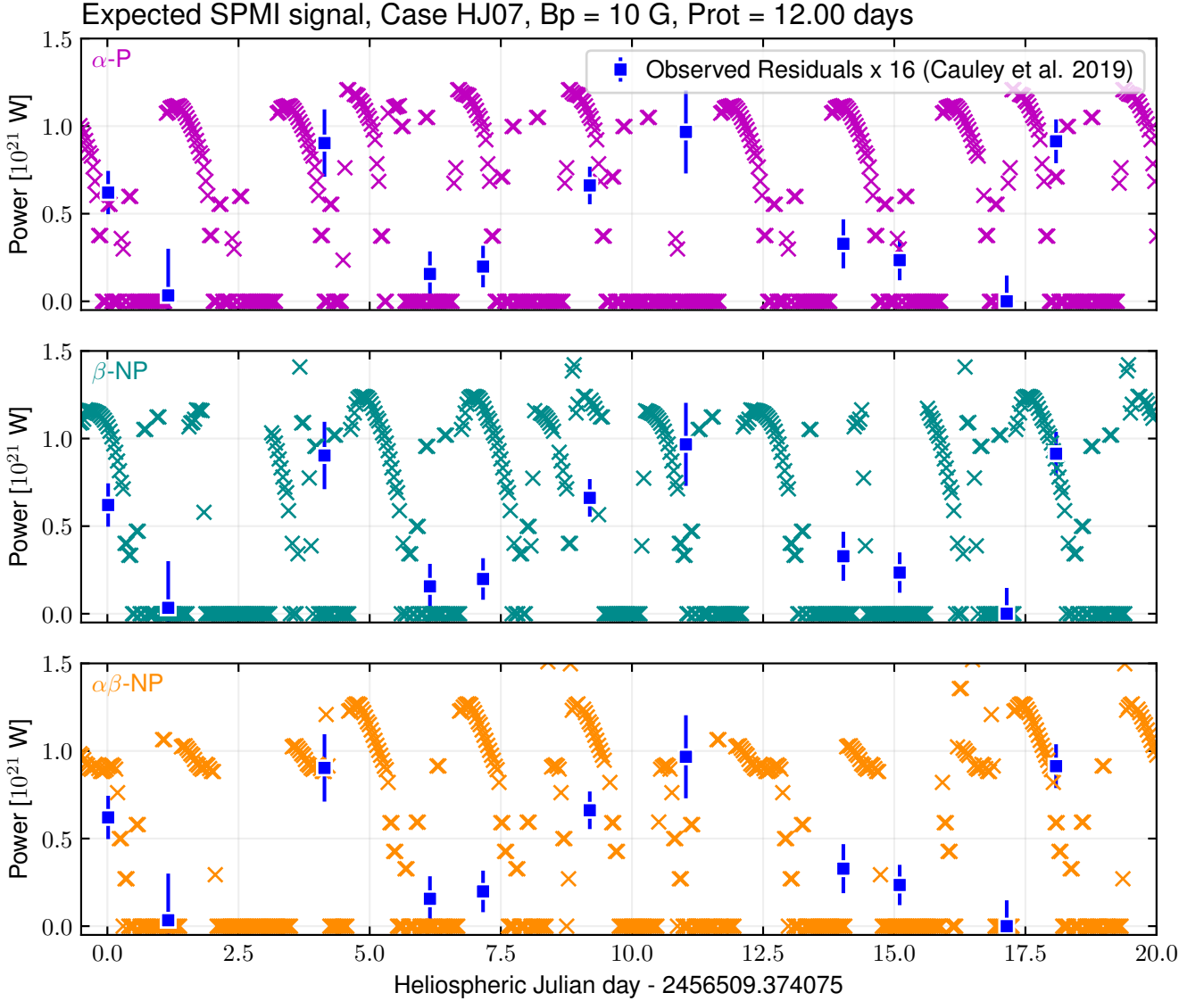


Figure 8. Predicted SPMI power as a function of time. Each panel corresponds to one magnetic extrapolation technique for the case HJ07, as indicated. The SPMI power is obtained assuming $B_P=10$ G. The SPMI power takes into account the orbital motion of the planet, the travel time between the planet and the star, the stellar rotation, and the inclination of the star with respect to the line of sight from Earth (*i.e.* only the visible stellar disk is considered). Here, each cross represents the SPMI signal averaged over an exposure time of 1 hour to mimic the observed signal temporal resolution. More details are given in the text. The blue squares with error bars are the residuals of the power in the Ca II K band detected by Cauley et al. (2019), multiplied by a factor 16 to ease the comparison with the predicted total SPMI power.

predicts a strong SPMI signal whereas the residual is very weak. Models β -NP and $\alpha\beta$ -NP reproduce well some observational epochs (*e.g.* around 4 and 18 days), but fail at some other (*e.g.* around 7 days).

To be more quantitative, we have performed a blind search of a periodic signal in the predicted SPMI signal following the same methodology of Cauley et al. (2018). To do so, we sample the predicted signal with 11 points evenly distributed over the observational epoch of Cauley et al. (2018) and we randomly shift their location by at maximum 1 day. We also randomly generate a relative measurement error between 0 and 30% for each point. We generate 1000 series of such synthetic observations. For each serie, we perform a Lafler-Kinman statistic to search for a period, as in Cauley et al.

(2018). For that we use an open-source implementation of the Lafler-Kinman statistic². We have first verified that this implementation applied on the original data of Cauley et al. (2019) (blue squares in Fig. 8) does recover the orbital period of HD 189733b with a confidence level larger than 95%, as in the original work of Cauley et al. (2018). Applying the methodology on our sample of 1000 synthetic observations, we find that the orbital period of HD 189733b is recovered for 12% to 23% of the synthetic observations derived from the three HJ07 models, with a level of confidence larger than 95%. This result is particularly interesting because Cauley et al. (2018) found a signal at the orbital period if HD 189733b for 1 out of 6

² The P4J and the likelihood methodology described here.

observational epochs, *i.e.* a successful detection rate of about 17%. It is therefore possible that the SPMI signal is actually present at all the epochs studied by [Cauley et al. \(2018\)](#), but given the distribution of the observational data points it was most of the time unlikely to be detectable.

Given the scarcity of the observational points, we nevertheless iterate that it is not possible at this stage to confirm that the residuals can indeed be explained with a SPMI scenario. The comparisons shown in the middle and bottom panels of [Fig. 8](#) are yet encouraging, as well as the analysis of the detection likelihood we just detailed. Much more intense observations, with multiple measurements within one night, could in principle capture the phase dynamics of the synthetic SPMI signal predicted here. We have no such observational coverage available so far in the literature. The results presented in this work therefore provide a pathway to firmly confirm SPMI interpretations of stellar activity residuals in compact exosystems. Such confirmation requires very regular and dedicated observations for a system such as HD 189733, *e.g.* like the ambitious campaigns that are being carried with NenuFAR ([Zarka et al. 2020](#)).

5 DISCUSSIONS AND CONCLUSIONS

This paper is part of the MOVES collaboration, which is focused on characterizing the environment of HD 189733 and its hot Jupiter HD 189733b. It complements the initial MOVES I paper ([Fares et al. 2017](#)) that reconstructed the magnetic properties of HD 189733 over several epochs and the MOVES III paper ([Kavanagh et al. 2019](#)) that modelled the wind of HD 189733 at three other epochs than the one studied here, with a focus on its impact of possible radio emissions.

In this paper (MOVES V), we have modelled the environment of HD 189733 for August 2013, based on its observed Zeeman-Doppler Imaging map ([Fares et al. 2017](#)). At that epoch, [Cauley et al. \(2018\)](#) detected a signal in the CaII K band of HD 189733 that could originate from star-planet magnetic interaction. In this work, we assess the robustness of this interpretation based on a 3D modelling of the corona and wind of HD 189733.

We have used a 3D MHD approach with the framework Wind-Predict ([Réville et al. 2016](#)) based on the PLUTO code ([Mignone et al. 2007](#)). This approach is similar to the approach that was followed in the MOVES III paper ([Kavanagh et al. 2019](#)) using the BATS-R-US code. We studied twelve models covering four different thermodynamic coronal properties and three different magnetic extrapolation methods. The latter are an original development of this work, and their details are fully given in [Appendix A](#). Three of the twelve models correspond to the same modelling choices as those made in [Kavanagh et al. \(2019\)](#). The set of models presented in this work covers a large range of possible coronal states, and is available in the [Open Database Galactica](#). The existence of tracers of SPMI in the stellar signal requires that the planet HD 189733b orbits close enough to its host star, inside the Alfvén surface for at least part of its orbit. We find that this is possible only in half of our models using the relatively low coronal density and temperature.

The set of models predicts the available Poynting flux at the planetary orbit. It is the primary energy source for SPMI regardless of the detailed model considered ([Zarka et al. 2001](#); [Zarka 2007](#); [Saur et al. 2013](#); [Lanza 2013](#); [Strugarek 2016](#)). We find that the available Poynting flux varies from 10^{-2} to about 4 W/m^2 in our models. The models predicting that HD 189733b is orbiting inside the Alfvén surface lead to a maximum Poynting flux of about 1 W/m^2 at the planetary orbit. We find that the available Poynting flux can vary by more than two orders of magnitude along the orbit of HD 189733b, and also by

more than two orders of magnitude depending on the SPMI scenario. We find that the stretch-and-break mechanism of [Lanza \(2013\)](#) is the only mechanism providing enough power to tentatively explain the observations of [Cauley et al. \(2019\)](#).

The three magnetic field extrapolations considered in this work essentially affect the topology of the magnetized corona of HD 189733. We find that the amplitude of the SPMI is not changed significantly by the magnetic extrapolation.

We have assessed the temporal signature of the SPMI signal in the models where SPMI is able to affect the central star. We find that the magnetic extrapolation method completely determines the temporal phase of the predicted SPMI signal. At some specific epochs, some extrapolation methods predict a signal while others do not. We have estimated that the detection of the orbital period in synthetic observations mimicking the sampling of [Cauley et al. \(2019\)](#) would be possible only from 12% to 23% of the time. This is compatible with the fact that [Cauley et al. \(2018\)](#) detected a signal on one observational epoch out of six. We find that in the context of HD 189733, denser spectroscopic observations are needed to disambiguate the best extrapolation technique to reproduce the observational data, and are therefore needed to confirm the interpretation of excessive CaII K emissions as a result of SPMIs as was done in [Cauley et al. \(2019\)](#). A denser dataset would also help identifying the stellar intrinsic variability associated to impulsive events such as flares as well as rotational variability due to the appearance and disappearance of plages and spots as the star rotates. Indeed, flares and stellar activity can also be a source of noise hiding the SPMI signal. The predicted SPMI signal varies on a timescale of a few hours, therefore its firm detection requires several spectroscopic data points per night. In addition, the SPMI signal prediction requires constraints on the magnetic topology of HD 189733. The dense spectroscopic observations should therefore be complemented by concomitant and spectropolarimetric observations.

The estimated SPMI signal presented in this work takes into account the rotation of the star, the orbital phase of the planet, and the inclination of the exosystem. To obtain the ZDI map, [Fares et al. \(2017\)](#) considered a differential rotation of $d\Omega = 0.11 \pm 0.05 \text{ rad.d}^{-1}$. We have not considered the effect of such a differential rotation on the SPMI connectivity over the timescale of a bit more than one stellar rotation. Coronal models taking into account the differential rotation (*e.g.* [Pinto et al. 2021](#)) should be considered in future modelling efforts to characterize SPMIs in HD 189733.

The strong variability of the SPMI signal in HD 189733 may explain why it was detected only during one epoch by [Cauley et al. \(2018\)](#). We have shown that a SPMI signal is modulated by the orbital period of the planet, the rotation period of the star, and the magnetic topology linking the stellar surface to the planetary orbit. This leads to a significant probability of non-detection of the SPMI signal when the observational data points are scarcely distributed. Modelling in detail the connectivity and SPMI signal at other epochs of observations of HD 189733 could help to assess whether a SPMI signal could be buried in the existing observations, or if it is unlikely that SPMI was acting at that time. Again, a firm detection would still require much denser spectroscopic observations.

We have shown that the interpretation of the observed stellar signal can lead to estimates of the planetary field up to values of about 30 G. This estimate includes the unknown conversion factor between the available power in the SPMI and the power in a given particular observational band. Future characterization of SPMI will require theoretical developments of the detailed physical mechanism behind energy deposition in the stellar atmosphere to put constraints on this conversion factor. In addition, the large planetary field leads to a

large magnetosphere, as illustrated in Fig. 6. If the planet indeed sustains such a large field, dedicated MHD models embedding a planet with its magnetosphere (e.g. Cohen et al. 2009; Strugarek et al. 2015) will be required to self-consistently estimate the power channeled by the SPMI and go beyond the scaling-law approach followed in this work. Such large magnetospheres could also present significant asymmetries, which could affect their ionospheres and leave a detectable trace in phase curves of hot and ultra-hot Jupiters (e.g. Helling et al. 2021), and therefore offer a complementary view on these hypothetical planetary magnetospheres.

ACKNOWLEDGEMENTS

A. Strugarek thanks P.W. Cauley for sharing his data points shown in Fig. 8 and for valuable suggestions that helped strengthen the conclusions of our work. Computations were carried out using CEA TGCC and CNRS IDRIS facilities within the GENCI 60410133 and 80410133 allocations, and a local meso-computer funded by DIM ACAV+. A. Strugarek acknowledges funding from the European Union's Horizon-2020 research and innovation programme (Grant Agreement no. 776403 ExoPLANETS-A), the PLATO/CNES grant at CEA/IRFU/DAP, and the Programme National de Planétologie (PNP). A. Strugarek and A.S. Brun acknowledge funding from the ERC Synergy grant WholeSun 810218. R. Fares acknowledges funding from UAEU startup grant number G00003269. This work has been carried out in the frame of the National Centre for Competence in Research PlanetS supported by the Swiss National Science Foundation (SNSF). The authors acknowledge the financial support of the SNSF. This project has received funding from the European Research Council (ERC) under the European Union's Horizon 2020 research and innovation programme (project SPICE DUNE, grant agreement No 947634). Ch.Helling acknowledges funding from the European Union H2020-MSCA-ITN-2019 under Grant Agreement no. 860470 (CHAMELEON). PJW acknowledges support from STFC through consolidated grants ST/L000733/1 and ST/P000495/1. AAV acknowledges funding from the European Research Council (ERC) under the European Union's Horizon 2020 research and innovation programme (grant agreement No 817540, ASTROFLOW). P. Zarka acknowledges funding from the European Research Council (ERC) under the European Union's Horizon 2020 research and innovation programme (grant agreement No 101020459 - Exoradio).

DATA AVAILABILITY

The data presented in this work is made available to the community through the Open Database Galactica (<http://www.galactica-simulations.eu>). The 3D visualisation (Fig. 7) and properties along the planet orbit (Fig. 4) are downloadable for the 12 simulations on the [Magnetic interactions in HD 189733](#) webpage. Request for accessing other data from the simulation can be addressed to antoine.strugarek@cea.fr.

REFERENCES

- Agol E., Cowan N. B., Knutson H. A., Deming D., Steffen J. H., Henry G. W., Charbonneau D., 2010, *The Astrophysical Journal*, 721, 1861
- Ahuir J., Brun A. S., Strugarek A., 2020, *Astronomy & Astrophysics*, 170, 1
- Ahuir J., Strugarek A., Brun A.-S., Mathis S., 2021, *Astronomy & Astrophysics*, 650, A126
- Altschuler M. D., Newkirk G., 1969, *Solar Physics*, 9, 131
- Alvarado-Gómez J. D., Hussain G. A. J., Cohen O., Drake J. J., Garraffo C., Grunhut J., Gombosi T. I., 2016, *Astronomy & Astrophysics*, 594, A95
- Alvarado-Gómez J. D., et al., 2020, *The Astrophysical Journal*, 895, 47
- Amari T., Aly J. J., Canou A., Mikić Z., 2013, *Astronomy and Astrophysics*, 553, 43
- Barth P., et al., 2021, *Monthly Notices of the Royal Astronomical Society*, 502, 6201
- Boisse I., et al., 2009, *Astronomy and Astrophysics*, 495, 959
- Bouchy F., et al., 2005, *Astronomy and Astrophysics*, 444, L15
- Bourrier V., et al., 2018a, *Astronomy & Astrophysics*, 615, A117
- Bourrier V., et al., 2018b, *Astronomy & Astrophysics*, 620, A147
- Bourrier V., et al., 2020, *Monthly Notices of the Royal Astronomical Society*, 493, 559
- Callingham J. R., et al., 2021, *Nature Astronomy*, 5, 1233
- Carolan S., Vidotto A. A., Villarreal D'Angelo C., Hazra G., 2021, *Monthly Notices of the Royal Astronomical Society*, 500, 33823393
- Cauley P. W., Shkolnik E. L., Llama J., Bourrier V., Moutou C., 2018, *The Astronomical Journal*, 156, 262
- Cauley P. W., Shkolnik E. L., Llama J., Lanza A. F., 2019, *Nature Astronomy*, 3, 1
- Cegla H. M., Lovis C., Bourrier V., Beeck B., Watson C. A., Pepe F., 2016, *Astronomy & Astrophysics*, 588, A127
- Cohen O., Drake J. J., Kashyap V. L., Saar S. H., Sokolov I. V., Manchester W. B., Hansen K. C., Gombosi T. I., 2009, *Astrophysical Journal*, 704, 85
- Cranmer S. R., van Ballegoijen A. A., Edgar R. J., 2007, *The Astrophysical Journal Supplement Series*, 171, 520
- Cuntz M., Saar S. H., Musielak Z. E., 2000, *The Astrophysical Journal*, 533, L151
- Donati J.-F., Landstreet J., 2009, *Annual Review of Astronomy and Astrophysics*, 47, 333
- Fares R., et al., 2010, *Monthly Notices of the Royal Astronomical Society*, 406, 409
- Fares R., et al., 2017, *Monthly Notices of the Royal Astronomical Society*, 471, 1246
- Gao Y., 2021, *The Astronomical Journal*, 161, 259
- Gronoff G., et al., 2020, *Journal of Geophysical Research: Space Physics*, 125
- Hazra S., Réville V., Perri B., Strugarek A., Brun A. S., Buchlin E., 2021, *The Astrophysical Journal*, 910, 90
- Helling C., Worters M., Samra D., Molaverdikhani K., Iro N., 2021, *Astronomy & Astrophysics*, 648, A80
- Hess S. L. G., Zarka P., 2011, *Astronomy & Astrophysics*, 531, A29
- Holzwarth V., Jardine M., 2007, *Astronomy and Astrophysics*, 463, 11
- Hrudková M., et al., 2010, *Monthly Notices of the Royal Astronomical Society*, 403, 2111
- Jardine M., Vidotto A. A., Van Ballegoijen A., Donati J.-F. F., Morin J., Fares R., Gombosi T. I., 2013, *Monthly Notices of the Royal Astronomical Society*, 431, 528
- Johnstone C. P., Güdel M., 2015, *Astronomy & Astrophysics*, 578, A129
- Kavanagh R. D., et al., 2019, *Monthly Notices of the Royal Astronomical Society*, 485, 4529
- Kavanagh R. D., Vidotto A. A., Klein B., Jardine M. M., Donati J. F., Fionnagáin D. O., 2021, *Monthly Notices of the Royal Astronomical Society*, 504, 1511
- Kokori A., et al., 2021, Submitted to *ApJS*, pp 1–47
- Lanza A. F., 2013, *Astronomy and Astrophysics*, 557, 31
- Lanza A. F., 2018, in , *Handbook of Exoplanets*. Springer International Publishing, Cham, pp 1699–1704, doi:10.1007/978-3-319-55333-7_17, http://link.springer.com/10.1007/978-3-319-55333-7_17
- Lazovik Y. A., 2021, *Monthly Notices of the Royal Astronomical Society*, 508, 3408
- Mathis S., 2020, *Handbook of Exoplanets*. Springer International Publishing, Cham, doi:10.1007/978-3-319-30648-3, <http://link.springer.com/10.1007/978-3-319-30648-3>
- Mignone A., Bodo G., Massaglia S., Matsakos T., Tesileanu O., Zanni C., Ferrari A., 2007, *The Astrophysical Journal Supplement Series*, 170, 228
- Morello G., Waldmann I. P., Tinetti G., Peres G., Micela G., Howarth I. D., 2014, *The Astrophysical Journal*, 786, 22

- Moutou C., et al., 2007, *Astronomy and Astrophysics*, 473, 651
- Owen J. E., 2019, *Annual Review of Earth and Planetary Sciences*, 47, 67
- Pinto R. F., et al., 2021, *Astronomy & Astrophysics*, 653, A92
- Réville V., Brun A. S., Matt S. P., Strugarek A., Pinto R. F., 2015a, *The Astrophysical Journal*, 798, 116
- Réville V., Brun A. S., Strugarek A., Matt S. P., Bouvier J., Folsom C. P., Petit P., 2015b, *The Astrophysical Journal*, 814, 99
- Réville V., Folsom C. P., Strugarek A., Brun A. S., 2016, *The Astrophysical Journal*, 832, 145
- Réville V., et al., 2020, *The Astrophysical Journal Supplement Series*, 246, 24
- Saur J., 2017, in *Handbook of Exoplanets*. Springer International Publishing, Cham, pp 1–17, doi:10.1007/978-3-319-30648-3_27-1, http://link.springer.com/10.1007/978-3-319-30648-3_27-1
- Saur J., Grambusch T., Duling S., Neubauer F. M., Simon S., 2013, *Astronomy & Astrophysics*, 552, A119
- Saur J., et al., 2018, *Journal of Geophysical Research: Space Physics*, 123, 9560
- Schrijver C. J., Derosa M. L., 2003, *Solar Physics*, 212, 165
- See V., Jardine M., Fares R., Donati J.-F. F., Moutou C., 2015, *MNRAS*, 450, 4323
- Shkolnik E. L., Llama J., 2018, *Handbook of Exoplanets*, pp 1–18
- Shkolnik E., Walker G. A. H., Bohlender D. A., 2003, *The Astrophysical Journal*, 597, 1092
- Shkolnik E., Bohlender D. A., Walker G. A. H., Collier Cameron A., 2008, *The Astrophysical Journal*, 676, 628
- Strugarek A., 2016, *The Astrophysical Journal*, 833, 140
- Strugarek A., 2018, *Handbook of Exoplanets*, pp 1833–1855
- Strugarek A., Brun A. S., Matt S. P., Réville V., 2015, *The Astrophysical Journal*, 815, 111
- Strugarek A., Brun A. S., Donati J.-F., Moutou C., Réville V., 2019, *The Astrophysical Journal*, 881, 136
- Turner J. D., et al., 2021, *Astronomy & Astrophysics*, 645, A59
- Varela J., Brun A. S., Strugarek A., Réville V., Zarka P., Pantellini F., 2021, *Astronomy & Astrophysics*
- Vedantham H. K., et al., 2020, *Nature Astronomy*, pp 1–7
- Vidotto A., 2017, in Deeg H. J., Belmonte J. A., eds, *The Exoplanet Handbook*. Springer, <papers3://publication/uuid/B98180D5-4DBC-477F-8832-B3FE307651BC>
- Vidotto A. A., 2018, in *Handbook of Exoplanets*. Springer International Publishing, Cham, pp 1–20, doi:10.1007/978-3-319-30648-3_26-2, http://link.springer.com/10.1007/978-3-319-30648-3_26-2
- Winn J. N., et al., 2006, *The Astrophysical Journal*, 653, L69
- Winn J. N., et al., 2007, *The Astronomical Journal*, 133, 1828
- Yeates A. R., et al., 2018, *Space Science Reviews*, 214, 99
- Zarka P., 2004, *Planetary and Space Science*, 52, 1455
- Zarka P., 2007, *Planetary and Space Science*, 55, 598
- Zarka P., Treumann R. A., Ryabov B. P., Ryabov V. B., 2001, *Astrophysics and Space Science*, 277, 293
- Zarka P., Denis L., Tagger M., Girard J., Coffre A., Dumez-viou C., 2020, *URSI GASS proceedings*, pp 2–5

APPENDIX A: MAGNETIC FIELD EXTRAPOLATIONS

A1 Preamble

In this section, we give the analytical formulation for the three types of field extrapolation used in this study. They are easily derived using the vector spherical harmonics basis

$$\begin{cases} \mathbf{R}_l^m &= Y_l^m \mathbf{e}_r \\ \mathbf{S}_l^m &= \nabla_{\perp} Y_l^m = \partial_{\theta} Y_l^m \mathbf{e}_{\theta} + \frac{1}{\sin \theta} \partial_{\varphi} Y_l^m \mathbf{e}_{\varphi} \\ \mathbf{T}_l^m &= \nabla_{\perp} \times \mathbf{R}_l^m = \frac{1}{\sin \theta} \partial_{\varphi} Y_l^m \mathbf{e}_{\theta} - \partial_{\theta} Y_l^m \mathbf{e}_{\varphi} \end{cases} \quad (\text{A1})$$

Any field can be decomposed using this basis in 3D space, and we

will use the following convention

$$\mathbf{B} = \sum_{l=0}^{\infty} \sum_{m=-l}^l \alpha_l^m \mathbf{R}_l^m + \frac{\beta_l^m}{l+1} \mathbf{S}_l^m - \frac{\gamma_l^m}{l+1} \mathbf{T}_l^m, \quad (\text{A2})$$

where α_l^m , β_l^m and γ_l^m are a function of r only. In what follows we contract the summation symbol over l and m to $\sum_{l,m}$. The coefficients α_l^m , β_l^m and γ_l^m correspond to the classical toroidal-poloidal decomposition of a divergence-free field, where α_l^m and β_l^m carry the poloidal field and γ_l^m carries the toroidal field. Let us note upfront a few important relationships based on this decomposition:

$$\nabla \cdot \mathbf{B} = \sum_{l,m} \left[\frac{1}{r^2} \partial_r (r^2 \alpha_l^m) - l \frac{\beta_l^m}{r} \right] Y_l^m \quad (\text{A3})$$

$$\begin{aligned} \nabla \times \mathbf{B} &= \sum_{l,m} \left[-l \frac{\gamma_l^m}{r} \right] \mathbf{R}_l^m + \left[-\frac{1}{r} \partial_r (r \gamma_l^m) \right] \mathbf{S}_l^m \\ &+ \left[\frac{\alpha_l^m}{r} - \frac{1}{r(l+1)} \partial_r (r \beta_l^m) \right] \mathbf{T}_l^m, \end{aligned} \quad (\text{A4})$$

$$\iint \mathbf{B} \cdot \mathbf{B} d\Omega = \sum_{l,m} \left[|\alpha_l^m|^2 + \frac{l}{l+1} (|\beta_l^m|^2 + |\gamma_l^m|^2) \right], \quad (\text{A5})$$

where $d\Omega = \sin \theta d\theta d\varphi$. These formulae have some interesting implications. First, the γ_l^m does not affect the divergence of \mathbf{B} , which means that we can choose any dependency we want for this coefficient without breaking $\nabla \cdot \mathbf{B} = 0$. Second, imposing $\nabla \cdot \mathbf{B} = 0$ gives a direct relationship between coefficients α_l^m and β_l^m . Finally, a current-free magnetic field requires that $\gamma_l^m(r) = 0$, and sets another constraint on the relationship between α_l^m and β_l^m . We will now make use of these constraints to derive extrapolations methods. We will consider in all that follows that we have the knowledge of the decomposition coefficients on a spherical surface of radius R_{\star} , which is given by the ZDI technique. These coefficients are denoted α_{lm}^{\star} , β_{lm}^{\star} and γ_{lm}^{\star} .

A2 Potential extrapolation with a source surface (α -P)

We first derive the potential extrapolation formulae based on a source surface. The potential assumption is $\nabla \times \mathbf{B} = 0$, which directly translates to $\mathbf{B} = -\nabla \phi$. Because $\nabla \cdot \mathbf{B} = 0$, ϕ is the solution of the Laplace equation which, using spherical harmonics, can be written

$$\phi = \sum_{l,m} \left[\phi_{lm}^a r^l + \phi_{lm}^b r^{-(l+1)} \right] Y_l^m,$$

hence

$$\begin{aligned} \mathbf{B}^{\alpha-P} &= \sum_{l,m} \left[-\phi_{lm}^a l r^{l-1} + \phi_{lm}^b (l+1) r^{-(l+2)} \right] \mathbf{R}_l^m \\ &- \left[\phi_{lm}^a r^{l-1} + \phi_{lm}^b r^{-(l+2)} \right] \mathbf{S}_l^m. \end{aligned} \quad (\text{A6})$$

We suppose that \mathbf{B} is purely radial outside a spherical surface denoted R_{ss} , and known on the R_{\star} spherical surface. As a consequence, we can write

$$\begin{cases} -\phi_{lm}^a l R_{\star}^{l-1} + \phi_{lm}^b (l+1) R_{\star}^{-(l+2)} &= \alpha_{lm}^{\star} \\ \phi_{lm}^a R_{ss}^{l-1} + \phi_{lm}^b R_{ss}^{-(l+2)} &= 0 \end{cases}$$

which leads to

$$\begin{cases} \phi_{lm}^b &= \frac{\alpha_{lm}^{\star}}{l R_{\star}^{l-1} R_{ss}^{-(2l+1)} + (l+1) R_{\star}^{-(l+2)}} \\ \phi_{lm}^a &= \frac{\alpha_{lm}^{\star}}{-\phi_{lm}^b R_{ss}^{-(2l+1)}} \end{cases}$$

Hence, using the decomposition given in Section A1, we have for the potential field:

$$\begin{aligned}\alpha_{lm}^{\alpha-P} &= \alpha_{lm}^{\star} \frac{l(R_{\star}/R_{ss})^{2l+1}(r/R_{\star})^{l-1} + (l+1)(r/R_{\star})^{-(l+2)}}{l(R_{\star}/R_{ss})^{2l+1} + (l+1)}, \\ \beta_{lm}^{\alpha-P} &= (l+1)\alpha_{lm}^{\star} \frac{(R_{\star}/R_{ss})^{2l+1}(r/R_{\star})^{l-1} - (r/R_{\star})^{-(l+2)}}{l(R_{\star}/R_{ss})^{2l+1} + (l+1)}, \\ \gamma_{lm}^{\alpha-P} &= 0.\end{aligned}$$

This extrapolation leads to a field that matches only the radial component of \mathbf{B} on R_{\star} , and is denoted α -P in this work. It is illustrated in the second column of Fig. 2.

A3 Non-potential extrapolation matching the horizontal field (β -NP)

We now present an extrapolation method that allows to match the horizontal field $B_{\theta}\mathbf{e}_{\theta} + B_{\varphi}\mathbf{e}_{\varphi}$ on surface R_{\star} . This extrapolation is necessarily partly non-potential, as any potential field requires $\gamma_l^m(r) = 0$ as we have seen.

We first derive a potential part in the same spirit as §A2, but based on matching β_l^m at R_{\star} this time. Starting from Eq. A6 we now obtain that

$$\begin{cases} \phi_{lm}^a R_{\star}^{l-1} + \phi_{lm}^b R_{\star}^{-(l+2)} &= -\frac{\beta_{lm}^{\star}}{l+1} \\ \phi_{lm}^a R_{ss}^{l-1} + \phi_{lm}^b R_{ss}^{-(l+2)} &= 0 \end{cases}$$

which leads to

$$\begin{cases} \phi_{lm}^b &= -\frac{\beta_{lm}^{\star} R_{\star}^{l+2}}{l+1} \left[1 - \left(\frac{R_{\star}}{R_{ss}} \right)^{2l+1} \right]^{-1}, \\ \phi_{lm}^a &= -\phi_{lm}^b R_{ss}^{-(2l+1)} \end{cases},$$

and finally gives

$$\begin{aligned}\alpha_{lm}^{\beta-NP} &= \beta_{lm}^{\star} \left(\frac{R_{\star}}{R_{ss}} \right)^{l+2} \frac{l/(l+1)(r/R_{ss})^{2l+1} + 1}{(R_{\star}/R_{ss})^{2l+1} - 1}, \\ \beta_{lm}^{\beta-NP} &= \beta_{lm}^{\star} \left(\frac{R_{\star}}{R_{ss}} \right)^{l+2} \frac{(r/R_{ss})^{2l+1} - 1}{(R_{\star}/R_{ss})^{2l+1} - 1}.\end{aligned}$$

To complete this extrapolation we must now specify $\gamma_{lm}^{\beta-NP}(r)$. The only strong constraint is that it must match γ_{lm}^{\star} on R_{\star} , since it does not affect the divergence of \mathbf{B} . Here we have chosen a simple power law defined as

$$\gamma_{lm}^{\beta-NP} = \gamma_{lm}^{\star} \frac{r^{-n_{\gamma}} - R_{ss}^{-n_{\gamma}}}{R_{\star}^{-n_{\gamma}} - R_{ss}^{-n_{\gamma}}}.$$

In this work we chose $n_{\gamma} = 5$ to ensure that $\gamma_{lm}(r)$ quickly decreases when compared to α_{lm} and β_{lm} . Note that $\gamma_{lm}^{\beta-NP}$ carries the free magnetic energy of the extrapolated field. A smaller value of n_{γ} would lead to a higher free energy in the initial volume.

This extrapolation matched exactly the horizontal field on R_{\star} , and is illustrated on the third column of Figure 2.

A4 Mixed non-potential extrapolation ($\alpha\beta$ -NP)

In this work we make use of a third extrapolation method dubbed $\alpha\beta$ -NP. The complete extrapolation leveraging a 3D surface field is complex (e.g. Amari et al. 2013) and requires the development of dedicated codes (for a review in the context of the solar corona and wind, see Yeates et al. 2018). Such techniques are out of the scope of

the present work, and we opted for a simple linear combination between α -P and β -NP extrapolations to approximate an extrapolation matching the three components of \mathbf{B} on R_{\star} . This simply writes

$$\begin{aligned}\alpha_{lm}^{\alpha\beta-NP} &= g_{lm}\alpha_{lm}^{\alpha-P} + h_{lm}\alpha_{lm}^{\beta-NP}, \\ \beta_{lm}^{\alpha\beta-NP} &= g_{lm}\beta_{lm}^{\alpha-P} + h_{lm}\beta_{lm}^{\beta-NP}, \\ \gamma_{lm}^{\alpha\beta-NP} &= g_{lm}\gamma_{lm}^{\alpha-P} + h_{lm}\gamma_{lm}^{\beta-NP}.\end{aligned}$$

This extrapolation approximately matches the three components of \mathbf{B} on R_{\star} and is illustrated in the last column of Fig. 2. It is a harmonic-by-harmonic linear combination of the α -P and $\alpha\beta$ -NP extrapolation and therefore always satisfies $\nabla \cdot \mathbf{B} = 0$. The coefficients g_{lm} and h_{lm} can be chosen to match better one of the components, and can be tailored to maximize the closeness of the reconstructed surface field with the ZDI map. In this work, we have chosen the simplest linear combination $g_{lm} = 0.5$ and $h_{lm} = 0.5$ which achieves a satisfying reconstruction since the toroidal energy of the ZDI magnetic field is roughly 50% of the total surface field energy (see first line, second column in Table 3).

APPENDIX B: STAR-PLANET MAGNETIC INTERACTION AND STELLAR ROTATION PERIOD

The SPMI signal shown in Fig. 8 depends on stellar and planetary parameters. The amplitude of the signal depends on B_P (as shown in Fig. 5). The shape of the signal depends on the orbital parameters (semi-major axis, orbital period) which are well constrained by observations (see Table 1). The uncertainties on the orbital parameters are too small to influence our results. Likewise, the inclination of the system can in principle change significantly the SPMI signal, as was shown in Appendix A of Strugarek et al. (2019). In the case of HD 189733 Fares et al. (2017) used an inclination of 5° with respect to the axis perpendicular to the line of sight, and Cegla et al. (2016) obtained an inclination of 10° . We have tested both inclinations and found no significant difference in our results.

The rotation period of HD 189733 is nevertheless directly determining the phase of the SPMI signal we predict. HD 189733 possesses a surface differential rotation (e.g. Fares et al. 2010). Its equatorial rotation rate has been characterized by multiplied studies. Cegla et al. (2016) compiled the different values published at that time, and derived yet another rotation period based on the Rossiter-McLaughlin effect. The published equatorial rotation rates therefore vary from 9.05 days (Cegla et al. 2016) to 13.71 days (Winn et al. 2006). We have covered this range here to assess the influence of the uncertainty on the equatorial rotation period of HD 189733 on the predicted SPMI signal. The results are shown in Fig. B1 with the same layout as Fig. 8 and only for model HJ07 ($\alpha\beta$ -NP). The temporal signature of the SPMI is strongly influenced by P_{rot} , as expected. For instance, in the fast-rotating case (top panel), a strong long-lasting signal is expected near 10 days whereas it is absent in the two other cases rotating slower. The rotation period of the star varies by 14% between the middle panel ($P_{\text{rot}}=12$ days) and lower panel ($P_{\text{rot}}=13.71$ days). In this case, the SPMI signal is comparable but can still change significantly at some specific epochs like around 18 days, where the middle panel predicts a strong SPMI signal and the lower panel does not. We conclude here that the prediction of SPMI requires a careful characterization of the stellar rotation rate.

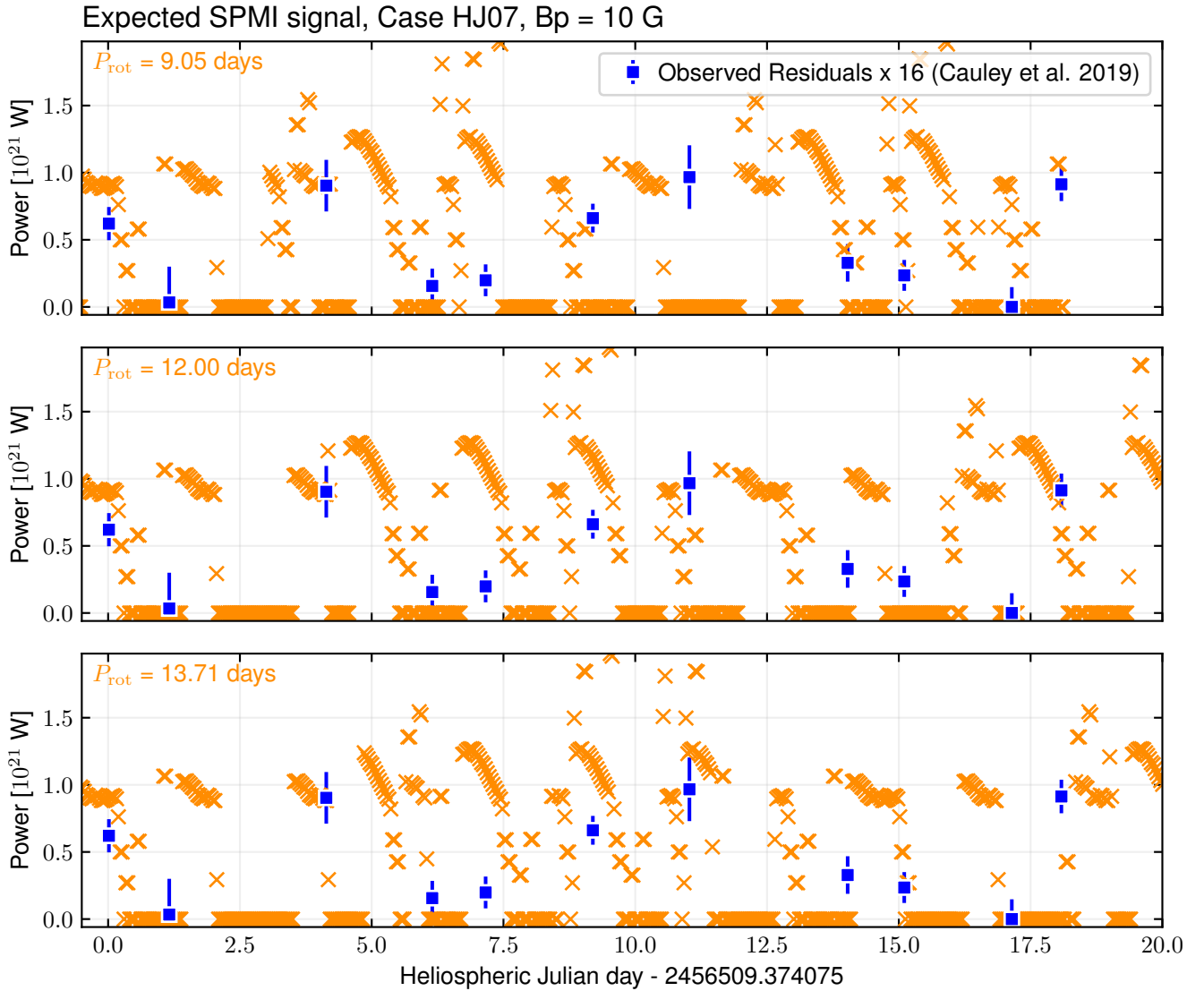


Figure B1. Predicted SPMI power as a function of time, for model HJ07 $\alpha\beta - NP$. The layout is the same as Fig. 8, except that here each panel correspond to a different stellar rotation period, taken from Cegla et al. (2016).

APPENDIX C: STAR-PLANET MAGNETIC INTERACTION AND PROPAGATION TIME

The SPMI signal can be transported from the planet to the star by several means. The canonical Alfvén-wing scenario (Saur et al. 2013) considers Alfvén waves that propagate at the local Alfvén speed from the vicinity of the planet down to the low corona, where they may deposit energy and accelerate electrons leading to an observable signal. Nevertheless, relativistic electrons can also be accelerated at magnetic reconnection sites close to the planet. In the latter case, the SPMI signal is transported very fast from the planet vicinity to the chromosphere. To assess the effect of the two scenarios on the predicted SPMI signal, we show them in Fig. C1. The orange crosses are the canonical case of a transport by Alfvén waves that we considered in this work. The gray crosses correspond to an instantaneous travel time between the planet and the chromosphere, mimicking the transport by relativistic electrons. We see that the bulk part of the SPMI signal is only slightly shifted from one scenario to the other,

because the local Alfvén crossing time is fast for most of the orbit (typically of the order of about an hour). At some specific epochs, for instance near 6 days, the Alfvén crossing time can reach up to 35 hours and the two signals start to differ significantly. In the context of HD 189733 in August 2013, the orbital phased with a long Alfvén crossing times are not abundant and therefore the two scenarios are indistinguishable with the available observational data.

This paper has been typeset from a $\text{\TeX}/\text{\LaTeX}$ file prepared by the author.

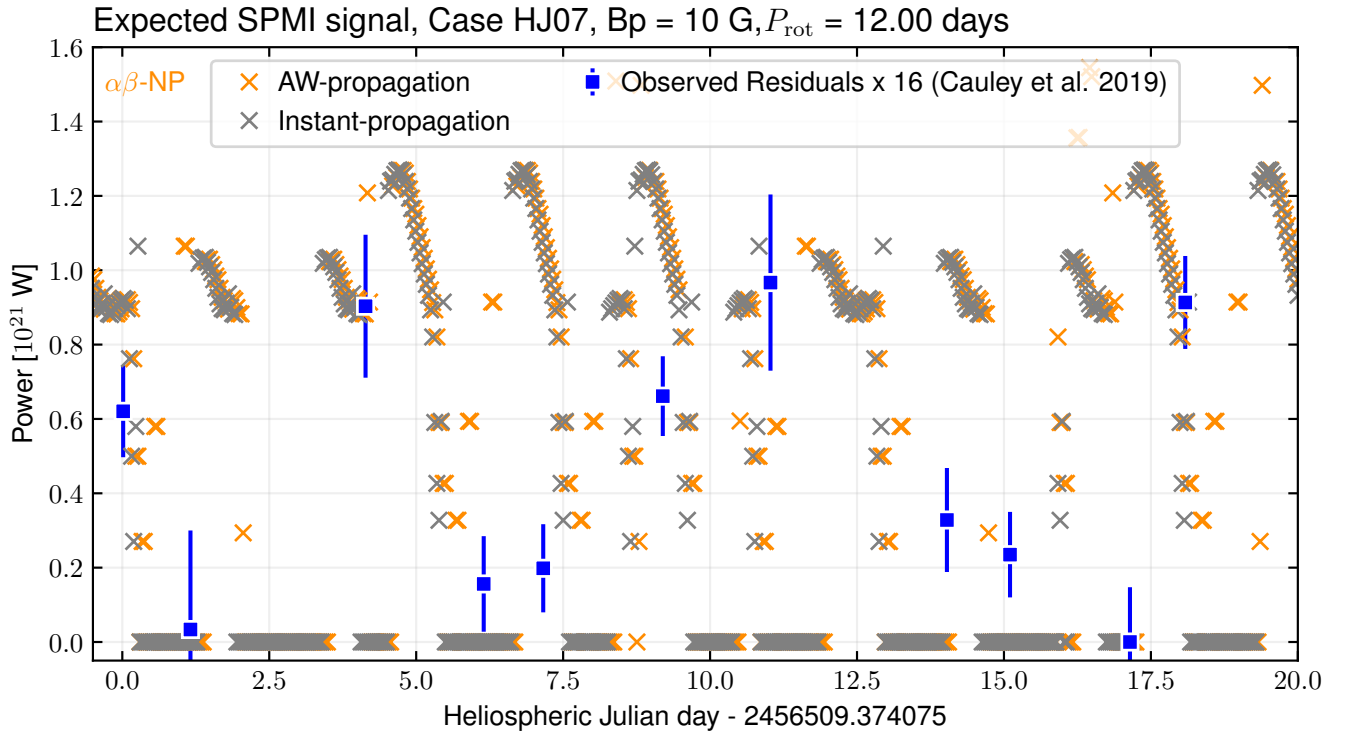


Figure C1. Predicted SPMI power as a function of time. The layout is the same as Fig. 8. The orange crosses correspond to the case where the SPMI signal is carried by Alfvén waves from the vicinity of the planet down to the chromosphere, and the gray crosses to the case where it is carried by relativistic electrons accelerated in the vicinity of the planet.